

Heating Degree Day Statistics

2006-2007 Season

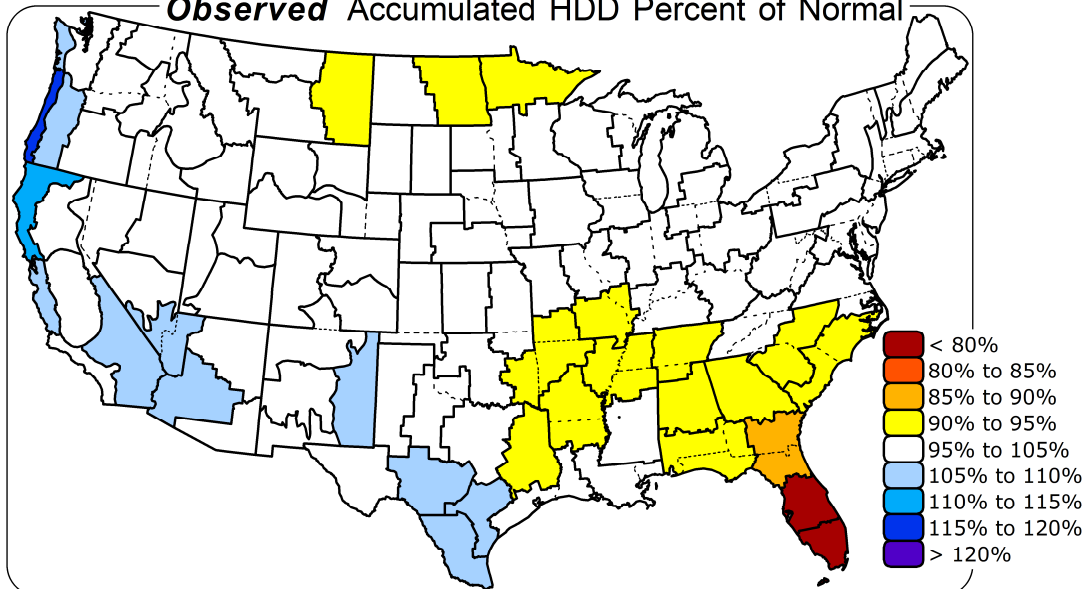
(November 2006 – March 2007)

<i>48-State Average</i>	<i>Area- Weighted</i>	<i>Population- Weighted</i>
<i>TOTAL</i>	4057.4	3396.3
<i>NORMAL</i>	4126.0	3486.0
<i>ANOMALY</i>	-68.6	-89.7
<i>% OF NORMAL</i>	98.3%	97.4%
<i>Maximum Cumulative Anomaly</i>	+77.7 (3/7/07)	+23.6 (3/9/07)
<i>Minimum Cumulative Anomaly</i>	-152.4 (1/11/07)	-235.0 (1/15/07)
<i>Maximum Daily Anomaly</i>	+12.9 (2/15/07)	+14.0 (2/15/07)
<i>Minimum Daily Anomaly</i>	-11.8 (3/13/07)	-12.7 (1/6/07)
<i>Days Above Normal</i>	68 (45.0%)	70 (46.4%)
<i>Days Below Normal</i>	83 (55.0%)	81 (53.6%)

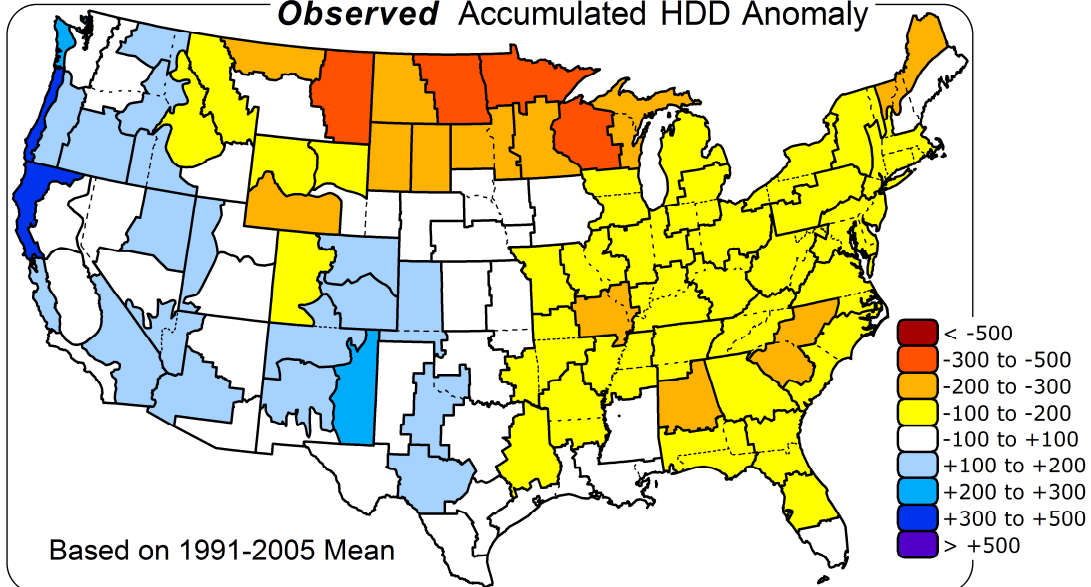
Heating Degree Day (HDD) Statistics -- SEASONAL TOTAL

November 1, 2006 - March 31, 2007

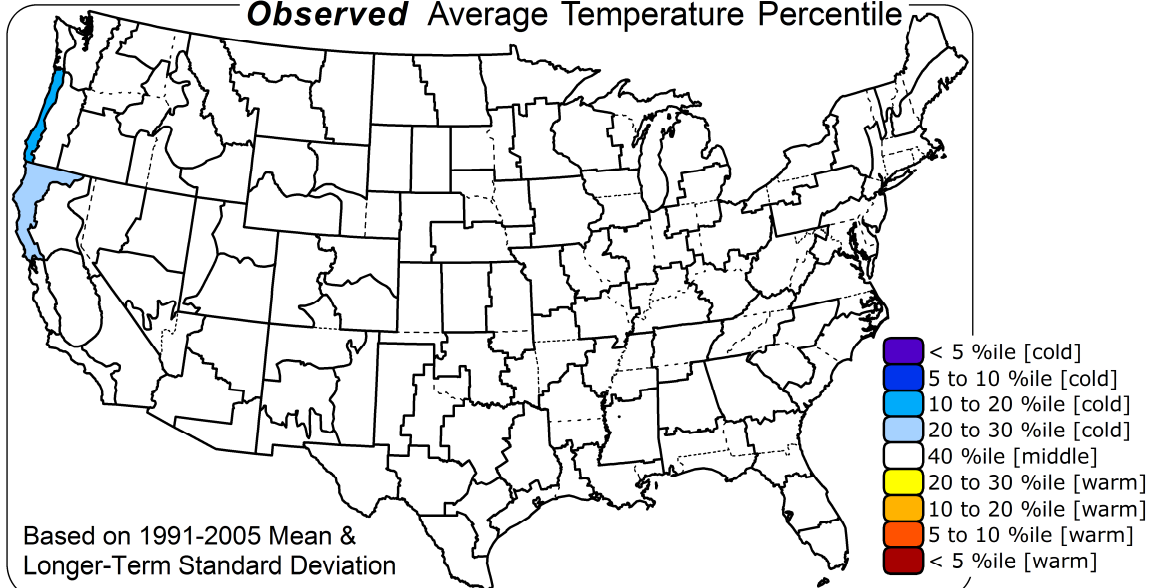
Observed Accumulated HDD Percent of Normal



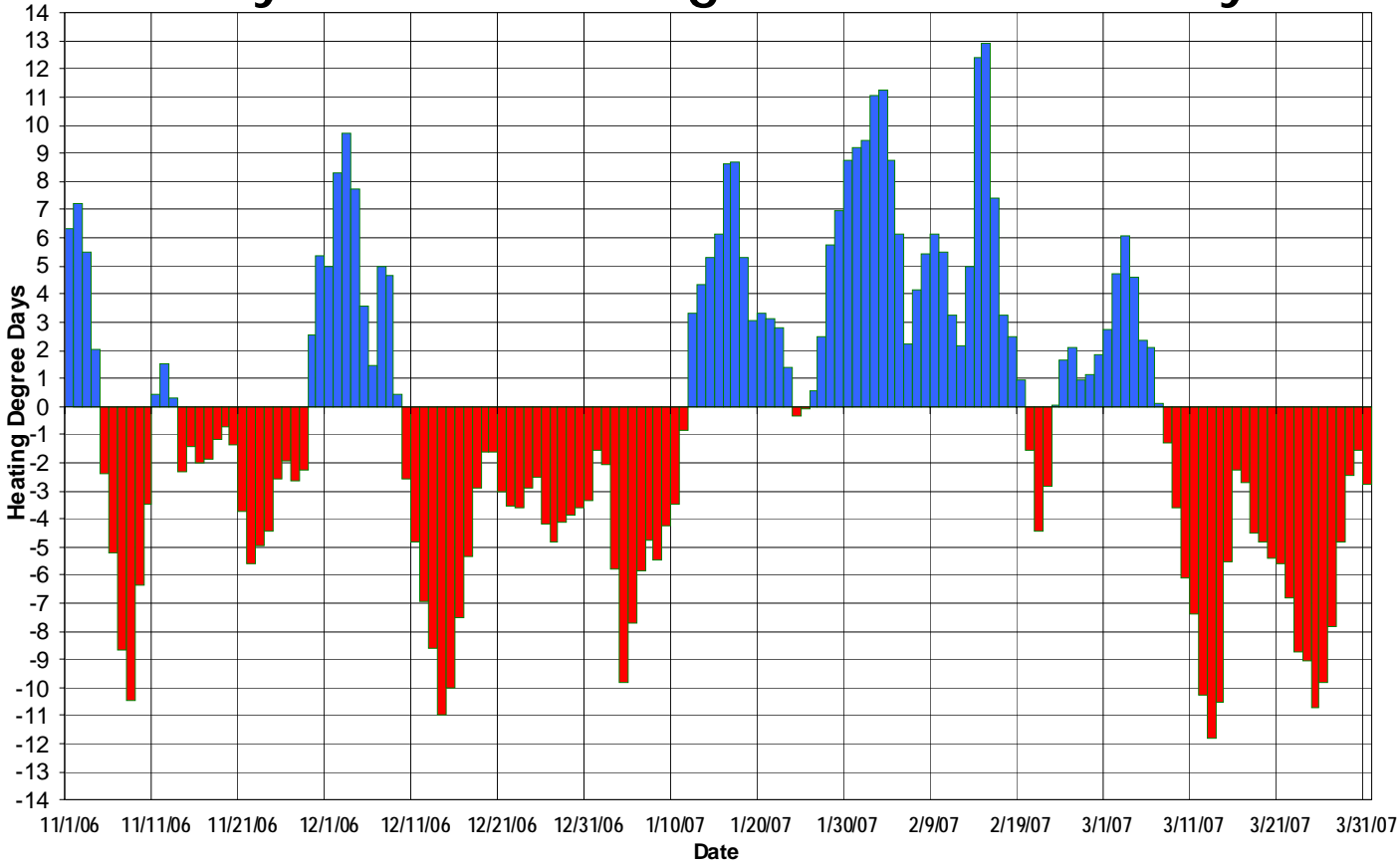
Observed Accumulated HDD Anomaly



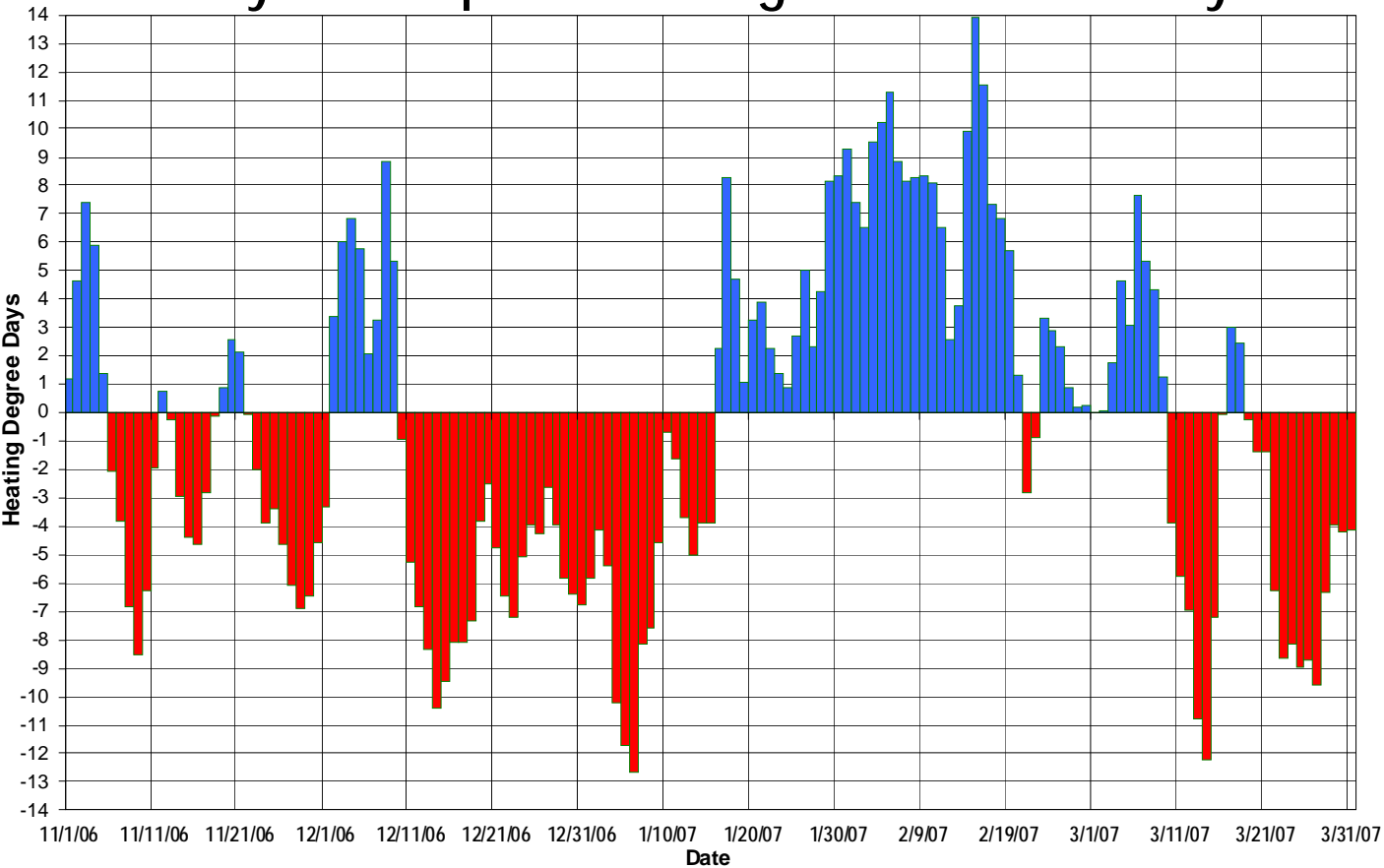
Observed Average Temperature Percentile



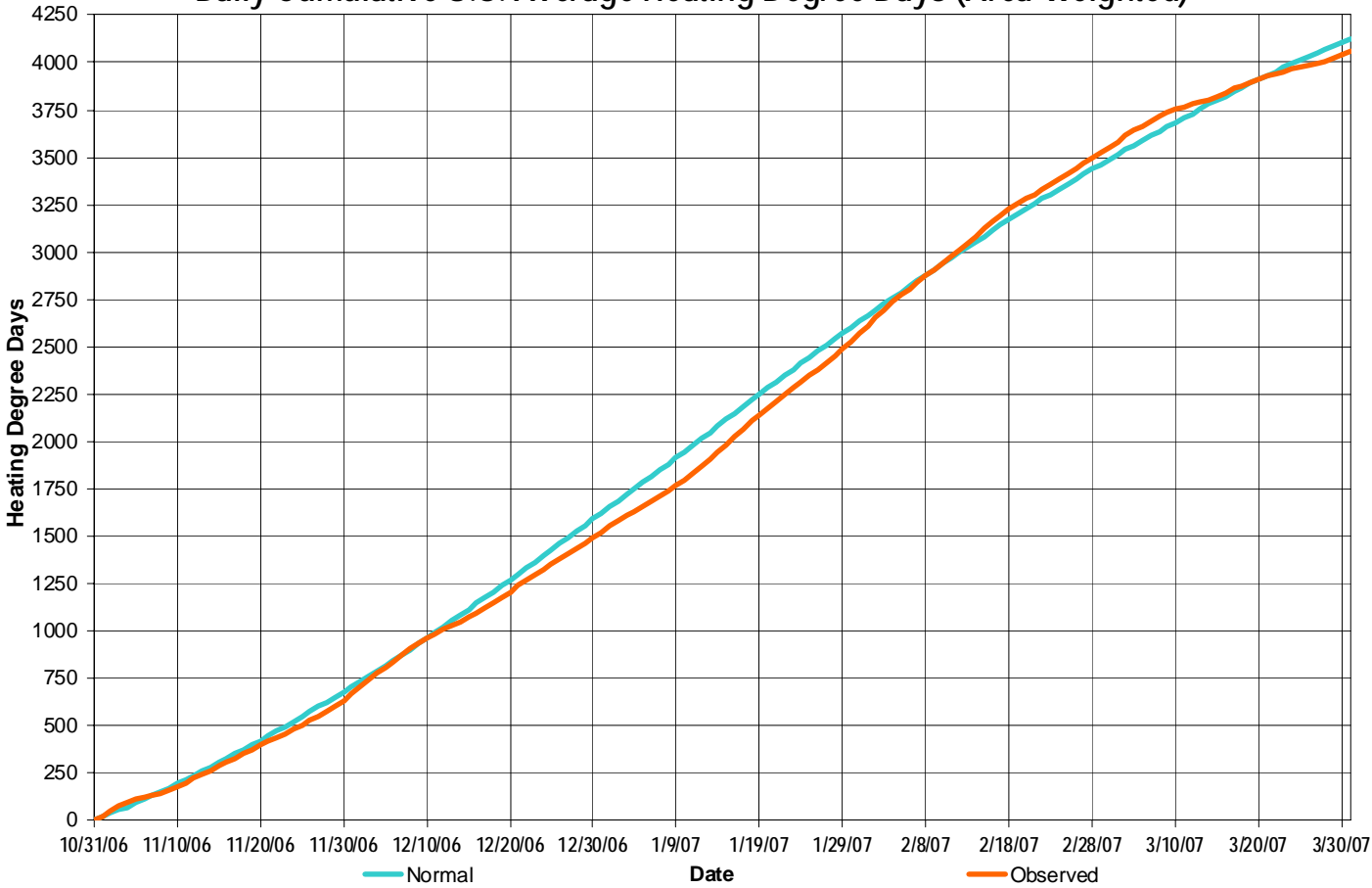
Daily U.S. Area-Weighted HDD Anomaly



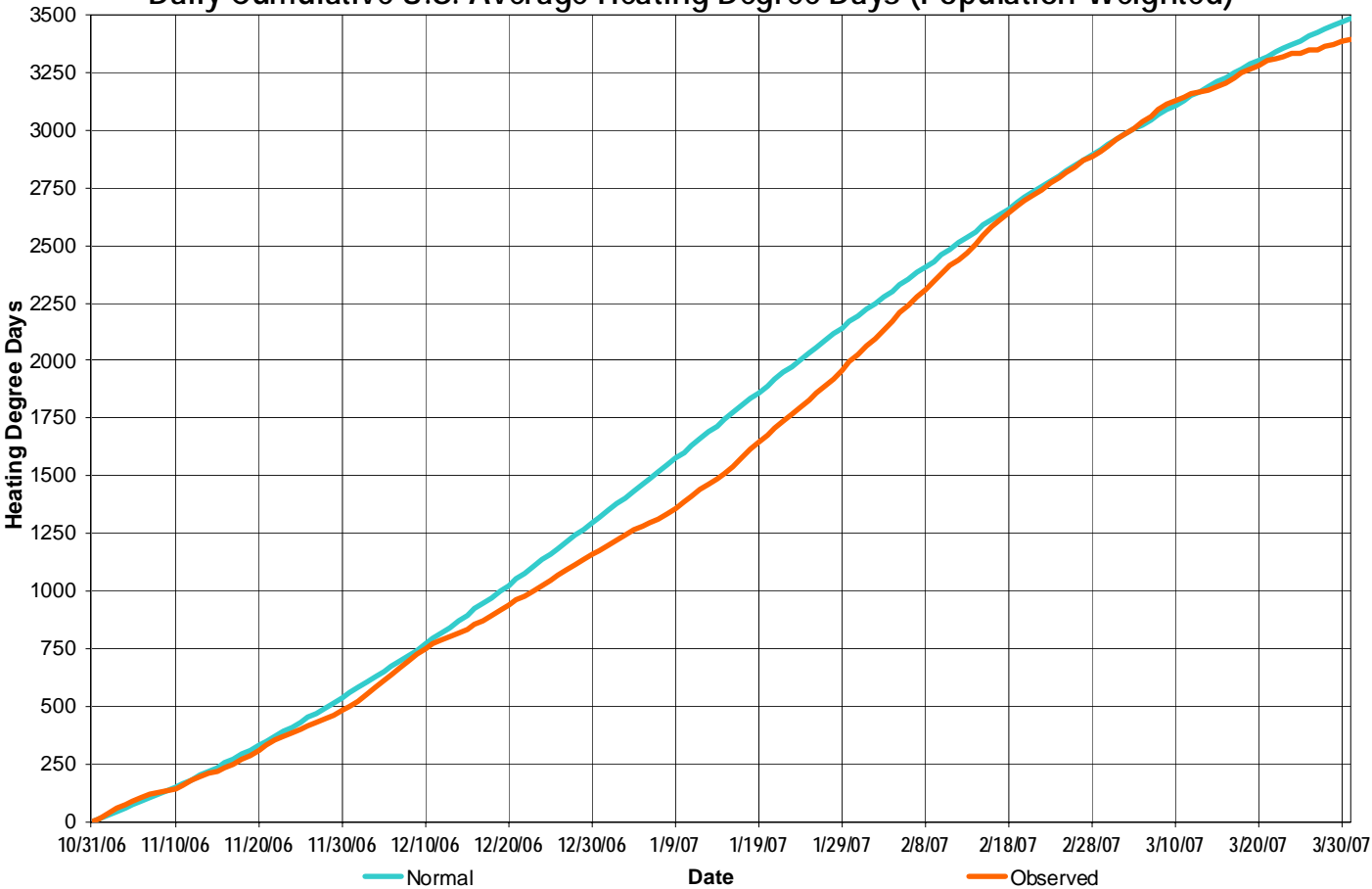
Daily U.S. Population-Weighted HDD Anomaly



Daily Cumulative U.S. Average Heating Degree Days (Area-Weighted)



Daily Cumulative U.S. Average Heating Degree Days (Population-Weighted)



Seasonal Total Heating Degree Days

November 2006 – March 2007 48-State Average

