

North Fork of the Middle Fork Trail



Tahoe National Forest Foresthill Ranger District

General Information

Mileage: 1.1 mi.

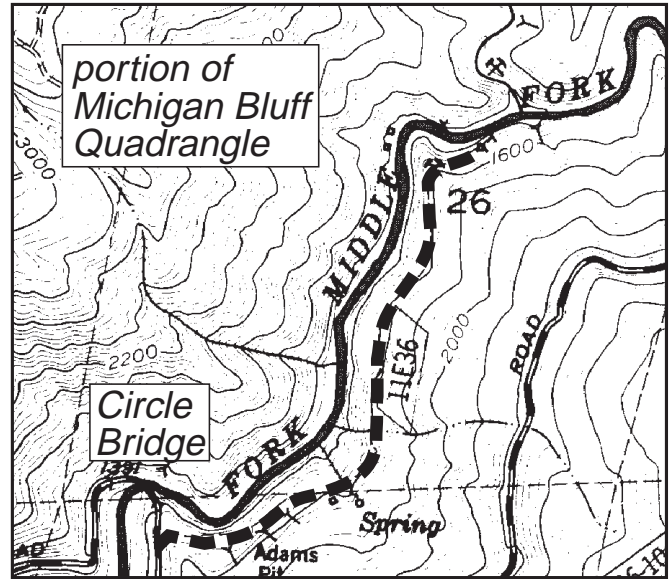
Elevation: 1400 feet

Difficulty: ● (Easy)

Use level: moderate

Topographic Map: Michigan Bluff

Trail Map



Access

The trailhead begins on Mosquito Ridge road (96), approximately nine miles east of Foresthill, next to Circle Bridge spanning the North Fork of the Middle Fork American river.

Trail Description

This trail runs upstream along the North Fork of the Middle Fork American river. Although it is primarily used by people placer mining along the river, other hikers are drawn to this area due to its easy grade, scenic beauty, and year round accessibility. This trail is a wonderful choice for early or late season hikes, or a quick conditioning hike, and wildflowers are plentiful during spring.

The trail maintains a moderate incline, but levels out after the first quarter mile, until it drops down to the river. Good fishing is available at times, and river access is generally easy along the trail. Poison Oak is commonly seen in the canyon.

Note

Only water from developed systems at recreation sites is considered safe to drink. Open water sources are easily contaminated by human or animal waste. Water from springs, lakes, ponds and streams should be properly treated before drinking. One recommended method of treatment is to bring clear water to a rolling boil for five minutes.

Tahoe National Forest
Highway 49 & Coyote St
631 Coyote St.
Nevada City CA 95959
(530) 265-4531

Foresthill Ranger District
22830 Foresthill Road
Foresthill CA 95631
voice (530) 367-2224
TDD (530) 367-2226

All are Welcome

The United States Department of Agriculture (USDA) prohibits discrimination in its programs on the basis of race, color, national origin, sex, religion, age, disability, political beliefs, and marital or familial status. (Not all prohibited bases apply to all programs). Persons with disabilities who require alternative means for communication of program information (braille, large print, audiotope, etc.), should contact USDA's TARGET center at 202-720-2600 (voice and TDD).

To file a complaint, write the Secretary of Agriculture, U.S. Department of Agriculture, Washington DC 20250, or call 1-800-245-6340 (voice) or 202-720-1127 (TDD). USDA is an equal opportunity employer.



United States
Department of
Agriculture



Forest Service
Pacific Southwest Region
www.r5.fs.fed.us/

Tahoe National Forest
www.r5.fs.fed.us/tahoe/