

Benefits

Medical: All wage marine employees are covered under a comprehensive medical care program. In addition, all employees may enroll in a federal employee health benefit insurance plan that provides coverage for dependents.



Training: NOAA provides STCW and other career-enhancing training.

Retirement System: The Federal Employees Retirement System is a three-tiered retirement plan provided for permanent and term employees and is similar to a 401K.

Leave Accrual: Beginning immediately, employees accrue generous annual, sick, and shore leave every two weeks. The amount of annual leave earned increases with additional years of service. The amount of sick and shore leave accrued per two-week pay period remains fixed throughout employment.

Additional Benefits: Research is often conducted 24 hours a day, 7 days a week, affording opportunities for overtime beyond 8 hours per day or during weekend and holiday work. NOAA provides many other employee benefits and services on board our ships. Ship employees often have opportunities to enjoy various national and international ports of call. Employees are provided shipboard room, meals, laundry, fitness facilities, video entertainment systems, and text E-mail at no cost. Military commissary privileges are afforded to all active and retired wage marine employees and their dependents.



The U.S. Department of Commerce is an equal employment opportunity employer

Apply Electronically

To apply for current vacancies, visit the Commerce Opportunities On Line (COOL) Web site: www.jobs.doc.gov



Additional information about positions, requirements, salary and benefits can be found at our Marine Operations Web site: www.moc.noaa.gov/emp_ops.htm

Or call us at:
MOC Atlantic 757-441-6206
MOC Pacific 206-553-4548

For more information about NOAA Marine and Aviation Operations and the NOAA Fleet, please visit these Web sites:

www.nmao.noaa.gov
www.moc.noaa.gov

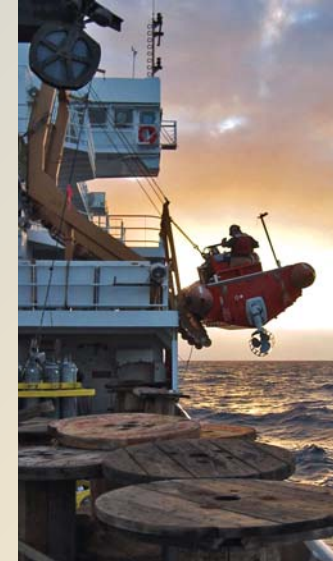
Applicants must be U.S. citizens and meet certain medical requirements. All positions require drug screening and background investigations.

About NOAA

NOAA, a Commerce Department agency, provides services that touch the lives of all Americans. NOAA warns of dangerous weather, charts our seas and skies, guides our use and protection of ocean and coastal resources, and conducts research to improve our understanding and stewardship of the environment that sustains us all.

NOAA ships monitor fishery stocks, service the buoys used for El Niño and climate change predictions, monitor coastal and offshore resources, and map the ocean floor to produce nautical charts. NOAA ships have played an integral part in locating downed aircraft (TWA 800, JFK Jr., and Egypt Air 990) and assisting vessels in distress.

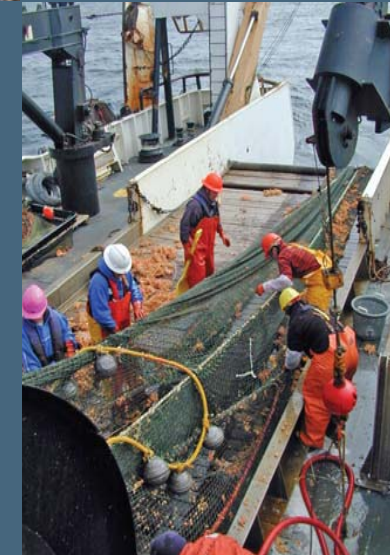
More information about NOAA can be found at www.noaa.gov.



*Work at
NOAA
for the
Adventure*

Looking for more than “just a job”?

A job with opportunity for growth in a dynamic and often challenging environment?



The National Oceanic and Atmospheric Administration offers a variety of seagoing positions aboard our fleet of scientific research and survey vessels ... positions that make each employee an important part of the NOAA team. The success of NOAA at sea lies in the technical expertise and professionalism of its crew, which is why we hire people who have a passion to succeed. NOAA offers great benefits and some of the most exciting working environments in the world.

NOAA's Marine Operations Center is seeking marine personnel for various seagoing positions on NOAA's ships. The ships perform fisheries and marine mammal research, oceanographic and atmospheric research, and hydrography. They operate from Georges Bank to the Caribbean in the Atlantic, in the Gulf of Mexico, and from the Bering Sea to the tropical Pacific. Their homeports are in Norfolk, Virginia; Seattle, Washington; Woods Hole, Massachusetts; Charleston, South Carolina; Pascagoula, Mississippi; San Diego, California; Honolulu, Hawaii; Ketchikan and Kodiak, Alaska.

Skilled and entry-level positions are available in the following departments:

Engineering Department

Chief Engineer*
 1st Assistant Engineer*
 2nd Assistant Engineer*
 3rd Assistant Engineer*
 Jr. Engineer*
 Engine Utilityman*
 Oiler*
 Wiper



Deck Department

Chief Boatswain*
 Boatswain Group Leader*
 Deck Utilityman/Seaman Surveyor*
 Able Bodied Seaman*
 Ordinary Seaman/General Vessel Assistant



Deck (Fisherman)

Chief Boatswain (Fisherman)*
 Lead Fisherman*
 Skilled Fisherman*
 Fisherman***
 Ordinary Fisherman/ General Vessel Assistant



Survey Department

Chief Survey Technician**
 Senior Survey Technician**
 Survey Technician**
 Assistant Survey Technician**
 Junior Survey Technician**



Steward Department

Chief Steward**
 Chief Cook**
 Second Cook**



* **Appropriate license and/or endorsement and experience are required**
 ** **Appropriate experience is required**
 *** **Appropriate experience is required. Able Bodied Seaman endorsement must be acquired within 12 months of employment date**

