

## Firewood in the Forest

Welcome to the Beaverhead-Deerlodge National Forest. The Forest Service sells permits to cut firewood for personal use. This brochure will help you get started.

Firewood cutting can be a fun outing, can save on your heating bill and can be good exercise. Firewood cutting cleans up dead wood, reduces the potential for wildfires, and avoids waste of a valuable resource. But it can also



cause unwanted impacts if it's done wrong.

### How much does firewood cost?

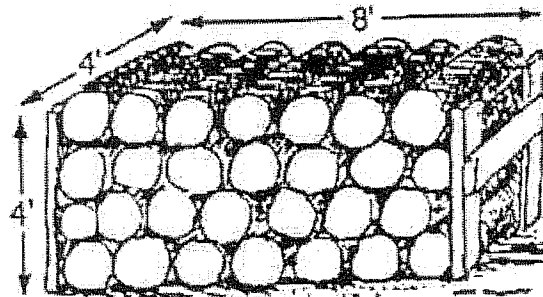
"Personal-use" firewood permits cost anywhere between \$28 and \$84, depending on how much wood you buy. You have to buy at least four cords (at \$7 a cord) or you can buy more wood, up to a total of 12 cords per household per year.

### Where can I cut wood?

You can cut dead trees anywhere *except* in timber sales (marked with signs or painted trees), on private property, in campgrounds or recreation areas, or within 100 feet of water. Don't cut within any wilderness area, wilderness study area, recommended wilderness, research natural area, or other area closed to firewood cutting like Thompson Park, south of Butte. Check with the local ranger station for current closures.

### What's a cord?

Firewood is commonly measured in cords. A standard cord is the amount of tightly piled wood in a stack 4 feet high by 4 feet wide by 8 feet long or 128 cubic feet.



### Fire Season

Sometimes when fire danger is particularly high, wood cutting may be limited to certain times of day or prohibited altogether. It's up to you to know about current restrictions. Check our website for the current fire danger and restrictions or call a Forest Service office if you're not sure.



### For more information

Call a Forest Service office in Butte, Deer Lodge, Dillon, Ennis, Philipsburg, Sheridan, Whitehall, Wise River, or Wisdom.

Visit our website at  
[www.fs.fed.us/r1/bdnf/](http://www.fs.fed.us/r1/bdnf/)



# Do's and Don'ts

**What are some Do's and Don'ts?**  
Check your permit for all the details.

Here are a few of the highlights:

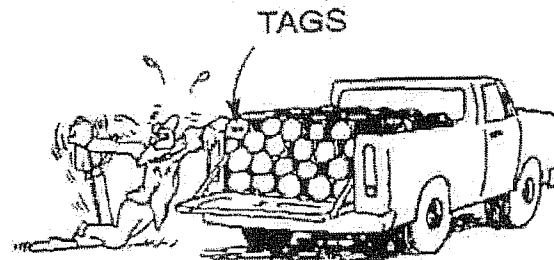
- Fill out the "Product Quantity Removal Record" on your permit before you haul your wood, even if it's just a partial load.
- Have your permit in your possession when you cut and haul your wood.
- Keep vehicles where they belong: on roads or trails open to vehicles, not traveling cross country.
- Clean slash off roads and ditches. Debris on the road interferes with road grading. Lop and scatter or pile slash away from the road.
- Cut the logs you haul to no more than six-foot lengths.
- Take all material three inches or larger in diameter.
- Don't cut trees specially marked to be left for wildlife.
- Don't fall, pile, or gather firewood within 100 feet of a running stream, pond, lake, or wet area.
- If a dead tree you cut down falls into a waterway, please leave it there and don't try to remove it.
- The stumps you leave behind should be less than six inches high.

## Offices of the Beaverhead-Deerlodge National Forest

All Area Code 406:

Butte, 494-2147  
Deer Lodge, 846-1770  
Dillon, 683-3900  
Ennis, 682-4253  
Philipsburg, 859-3211  
Sheridan, 842-5432  
Whitehall, 287-3223  
Wisdom, 689-3243  
Wise River, 832-3178

Website: <http://www.fs.fed.us/r1/bdnf/>



Here's a half-cord load.

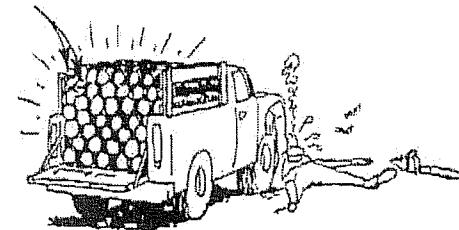
The United States Department of Agriculture (USDA) prohibits discrimination in all its programs and activities on the basis of race, color, national origin, age, disability, and where applicable, sex, marital status, familial status, parental status, religion, sexual orientation, genetic information, political beliefs, reprisal, or because all or part of an individual's income derived from any public assistance program. (Not all prohibited bases apply to all programs.) Persons with disabilities who require alternative means for communication of program information (Braille, large print, audiotape, etc.) should contact USDA's TARGET Center at (202) 720-2600 (voice and TDD). To file a complaint of discrimination, write to USDA, Director, Office of Civil Rights, 1400 Independence Avenue, S.W., Washington, D.C. 20250-9410, or call (800) 795-3272 (voice) or (202) 720-6382 (TDD). USDA is an equal employment opportunity provider and employer.

Publication R1-07-18

U S D A F O R E S T  
S E R V I C E

## PERSONAL-USE FIREWOOD

# Beaverhead- Deerlodge National Forest



One cord loaded, one tired woodcutter



U S D A F O R E S T  
S E R V I C E