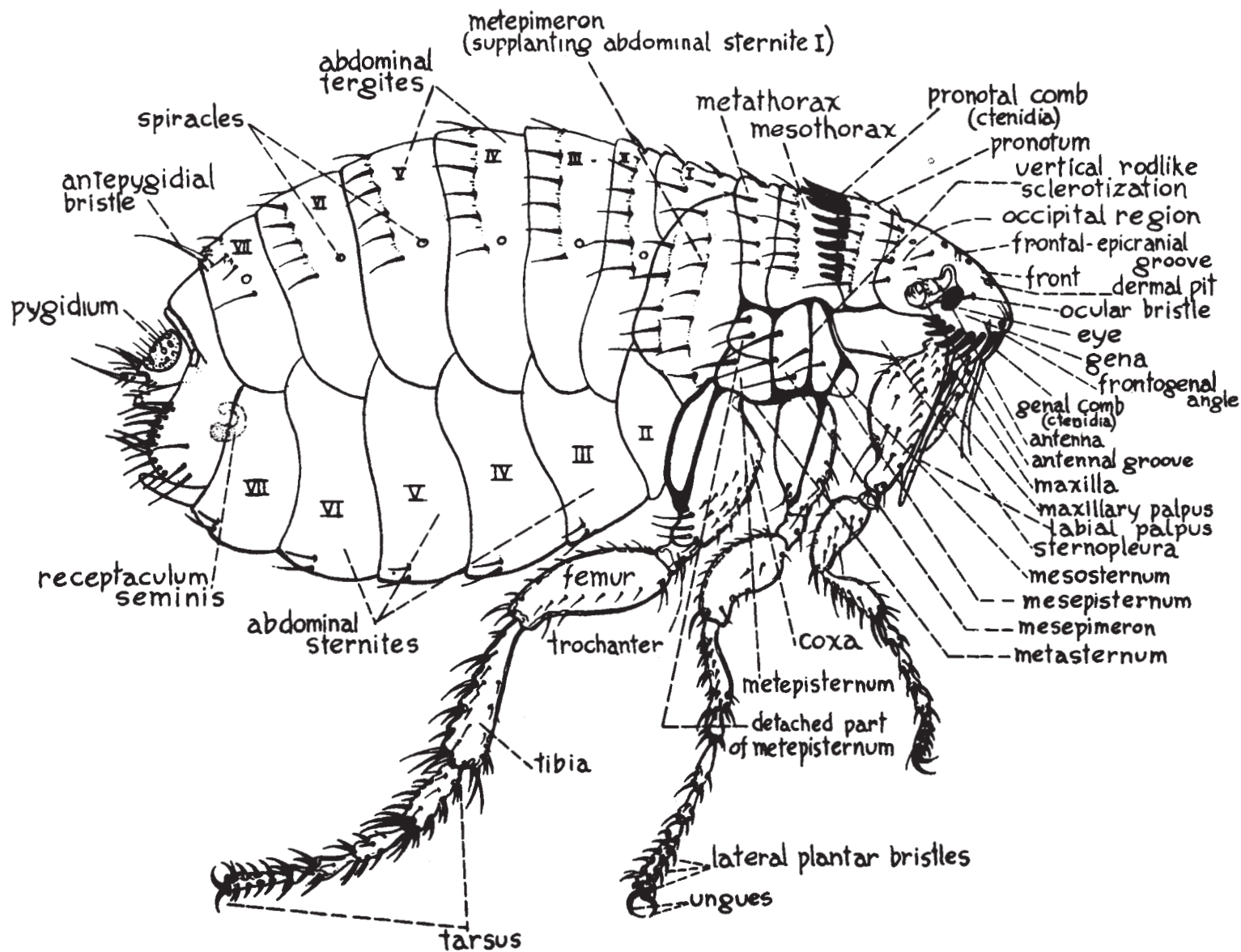
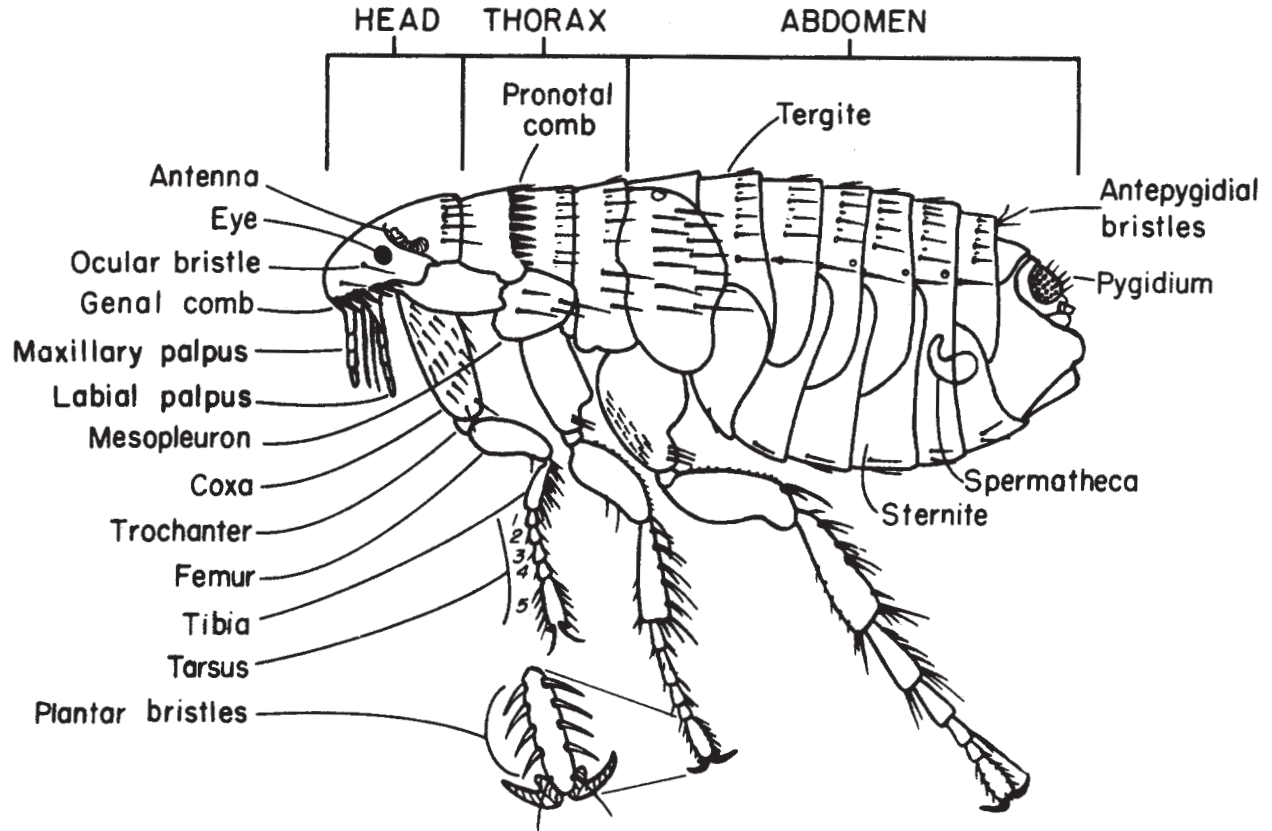


CAT FLEA - CTENOCEPHALIDES FELIS
adult female

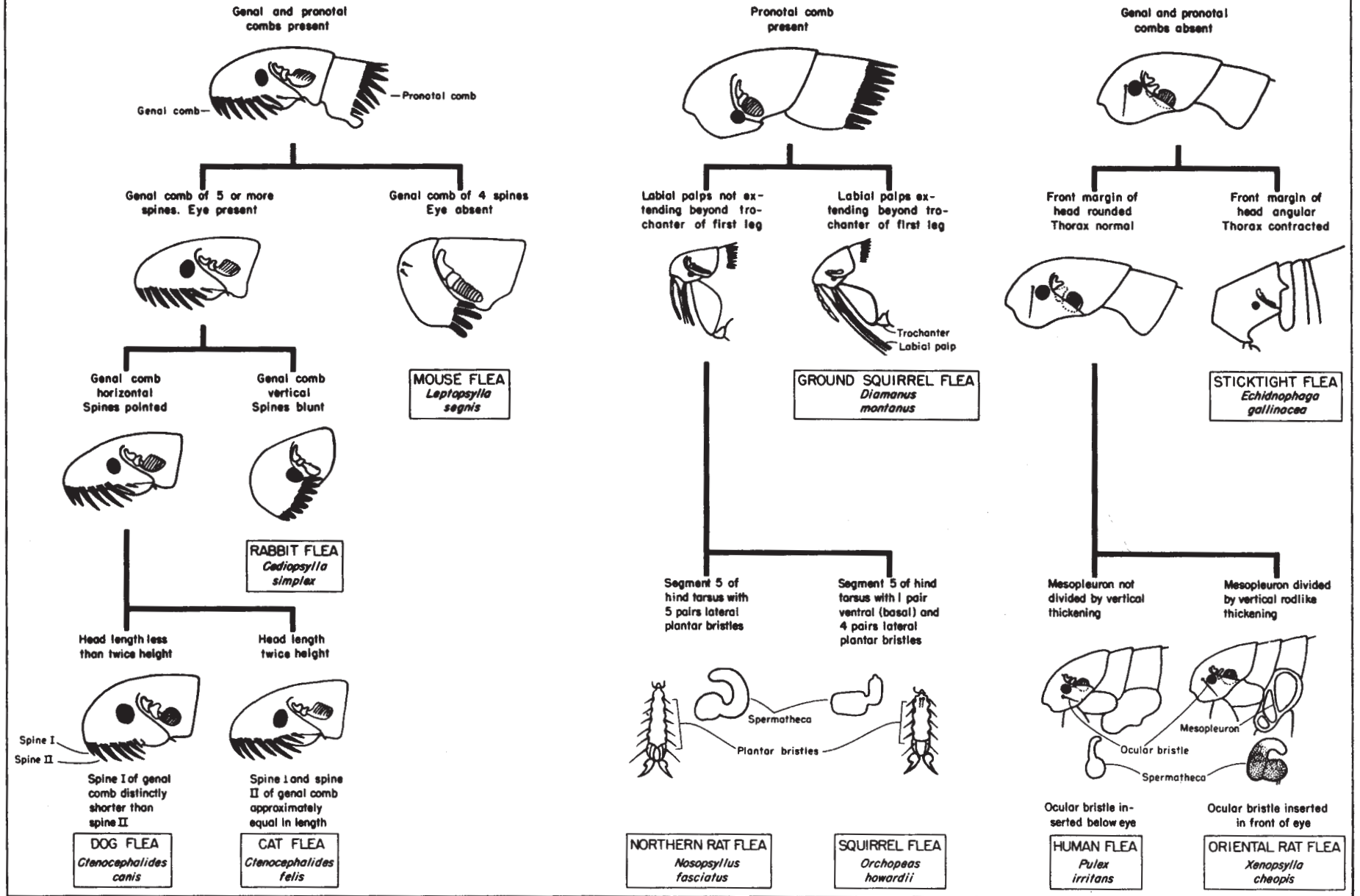


FLEA DIAGRAM – WITH STRUCTURES LABELED
Harry D. Pratt



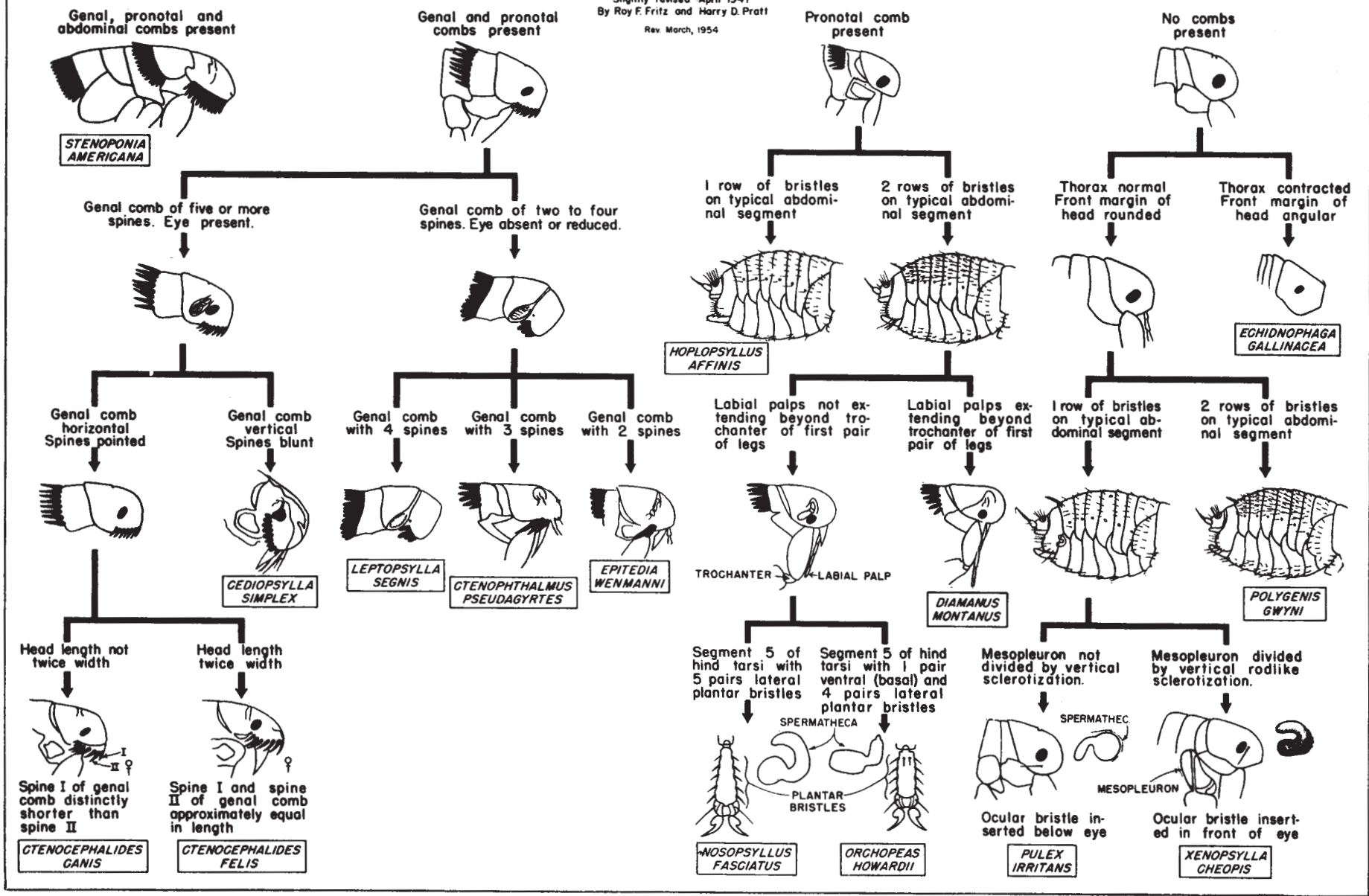
FLEAS: PICTORIAL KEY TO SOME COMMON SPECIES IN THE UNITED STATES

Harry D. Pratt



FLEAS: PICTORIAL KEY TO SPECIES FOUND ON DOMESTIC RATS IN SOUTHERN UNITED STATES

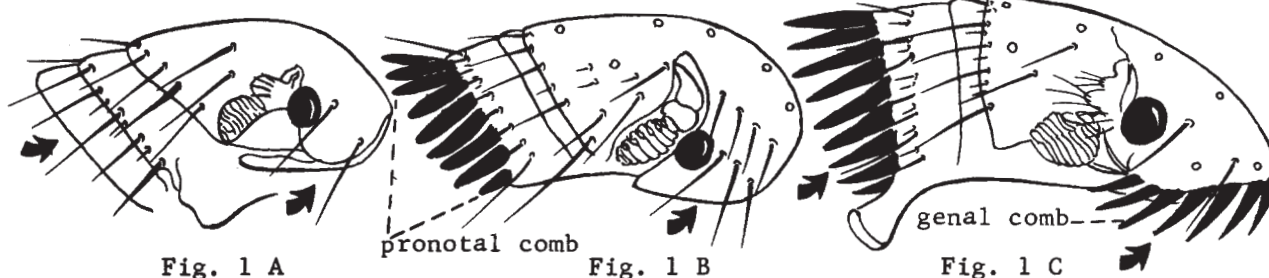
Slightly revised April 1947
By Roy F. Fritz and Harry D. Pratt
Rev. March, 1954



FLEAS: ILLUSTRATED KEY TO SPECIES FOUND DURING PLAGUE INVESTIGATIONS

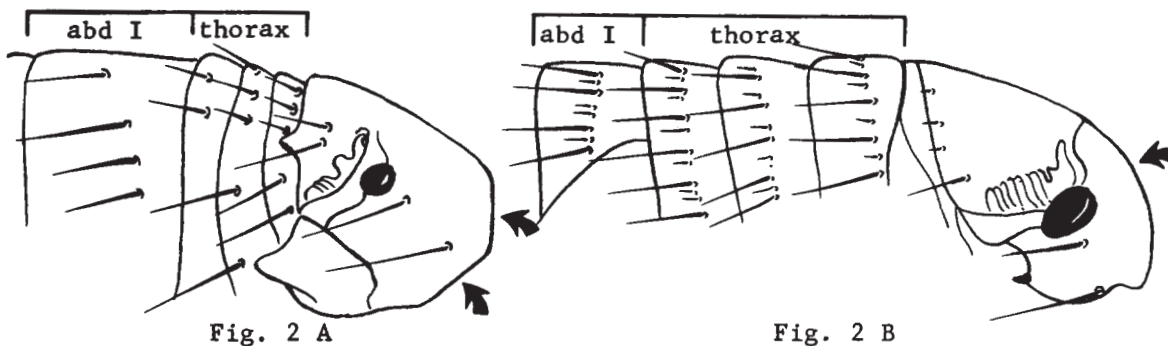
Harry D. Pratt and Chester J. Stojanovich

- 1. Pronotal and genal combs absent (Fig. 1 A).....2
- Pronotal combs present; genal comb present or absent (Fig. 1 B & G)...5



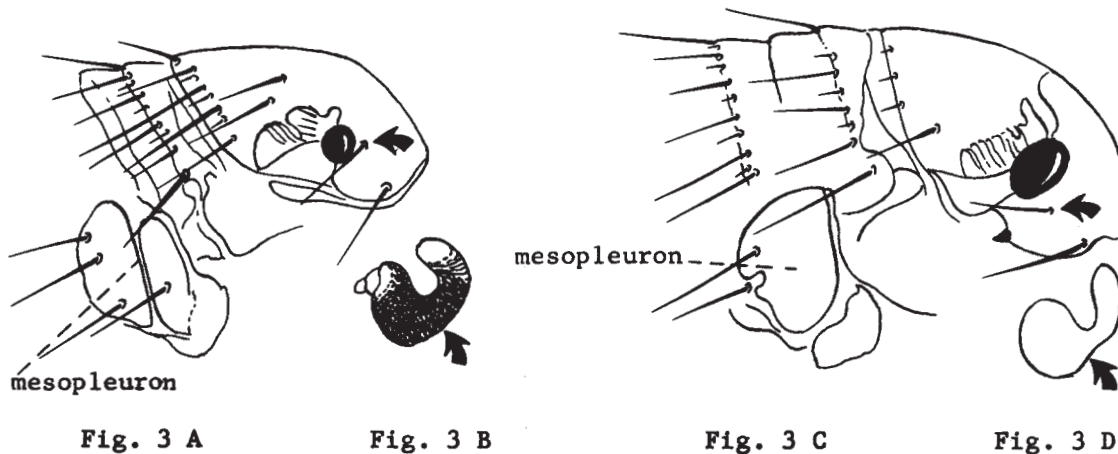
- 2. Front margin of head with two angles; three thoracic tergites together shorter than the first abdominal tergite (Fig. 2 A). (Echidnophaga gallinacea).....**STICKTIGHT FLEA**

Front margin of head rounded; three thoracic tergites together longer than the first abdominal tergite (Fig. 2 B).....3

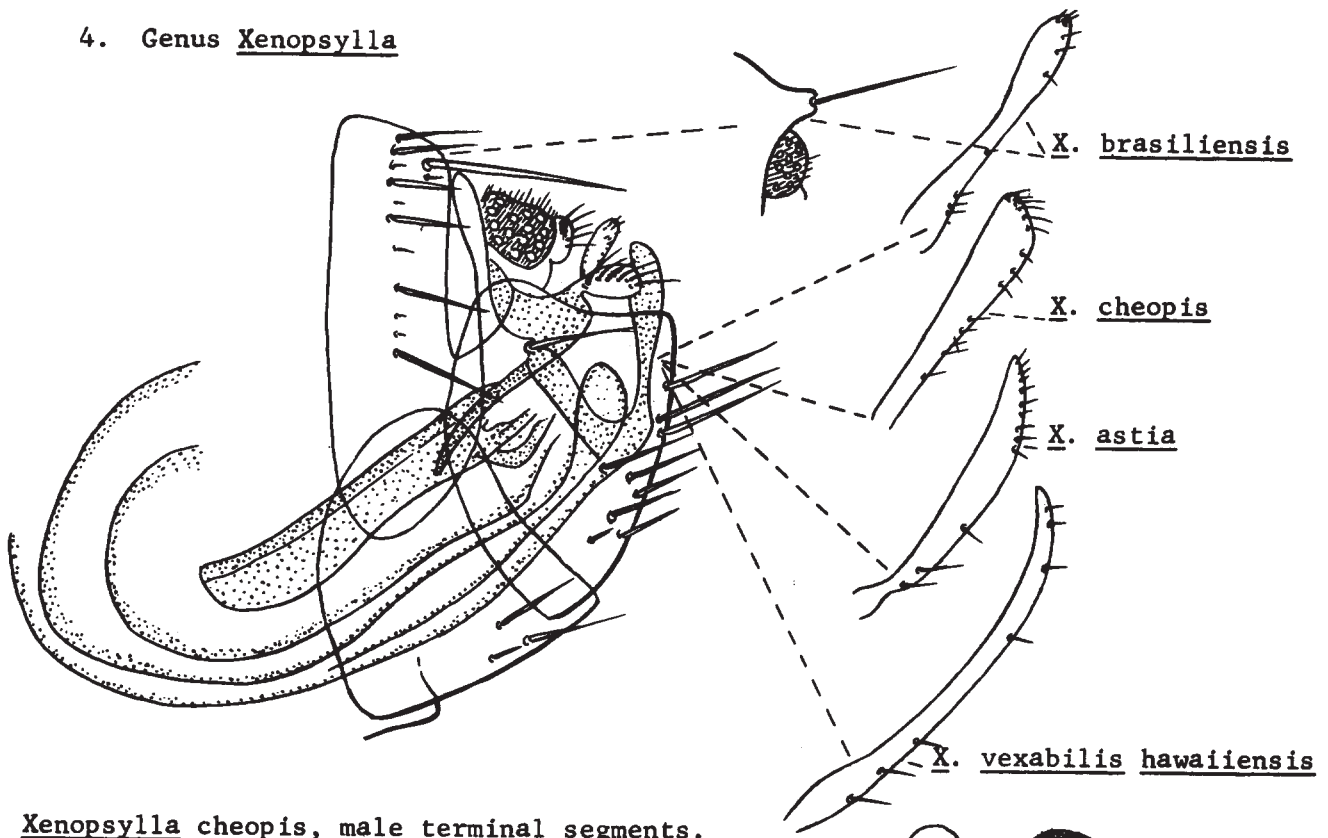


- 3. Ocular bristle in front of eye; mesopleuron divided by internal sclerotization; female with spermatheca partially pigmented (Fig. 3 A & B)...
.....(Genus Xenopsylla).....4

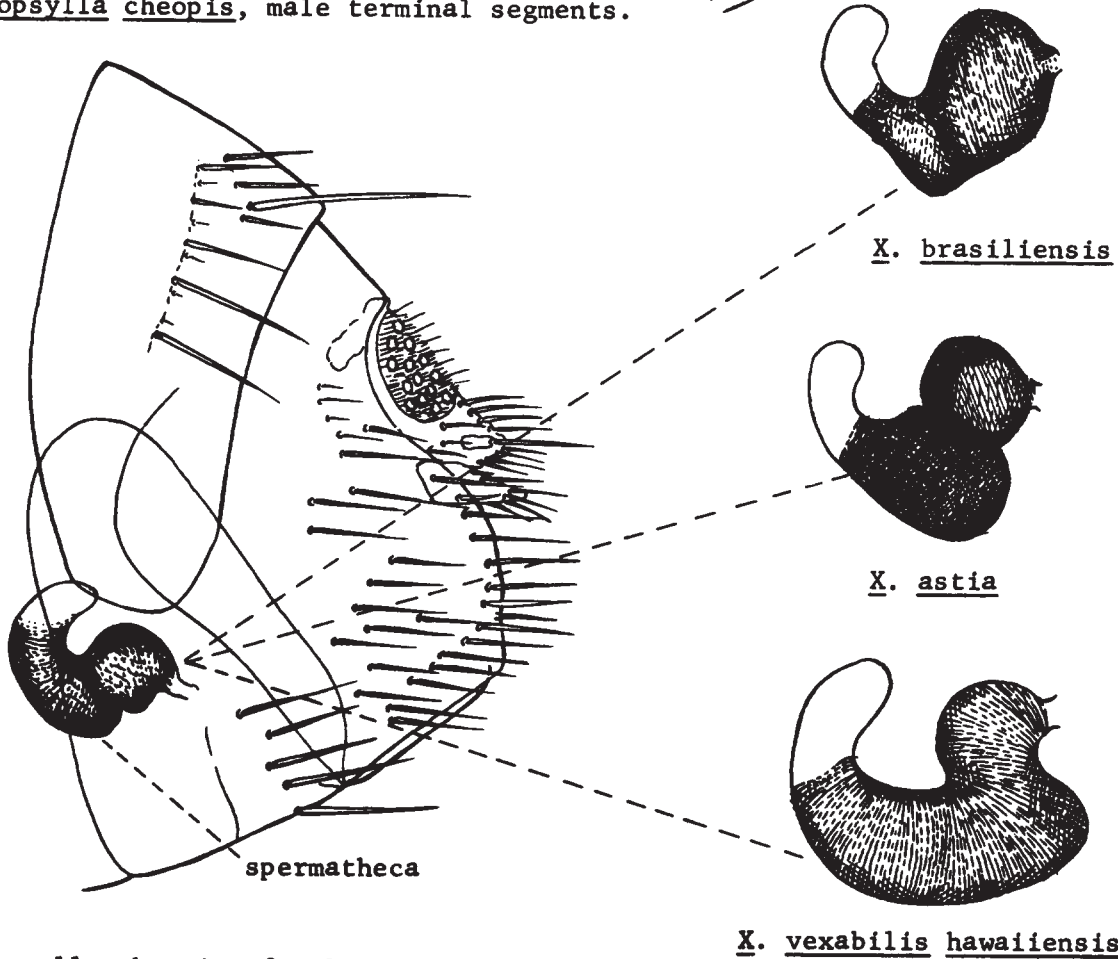
Ocular bristle beneath eye; mesopleuron without internal sclerotization; female with spermatheca entirely without pigment (Fig. 3 C & D).....
(Pulex irritans).....**HUMAN FLEA**



4. Genus Xenopsylla



Xenopsylla cheopis, male terminal segments.



Xenopsylla cheopis, female terminal segments

X. vexabilis hawaiiensis

- 5. Genal comb absent (Fig. 5 A).....6
- Genal comb present (Fig. 5 B).....8

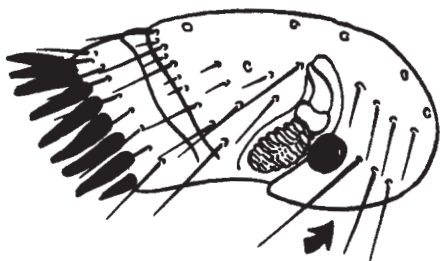


Fig. 5 A

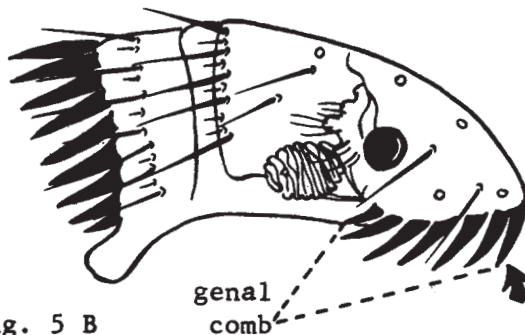


Fig. 5 B

- 6. Pronotal comb with about 12 teeth on each side (Fig. 6 A). India.....
 Stivalius ahalae
- Pronotal comb with 5 to 10 teeth on each side (Fig. 6 B).....7



Fig. 6 A

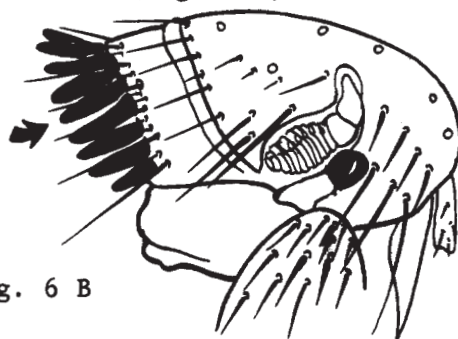


Fig. 6 B

- 7. Labial palpus long, extending beyond trochanter of first leg (Fig. 7 A).
 Diamanus montanus.....ROCK SQUIRREL FLEA

Labial palpus short, not extending to tip of coxa of first leg (Fig. 7 B).
Nosopsyllus fasciatus.....NORTHERN RAT FLEA

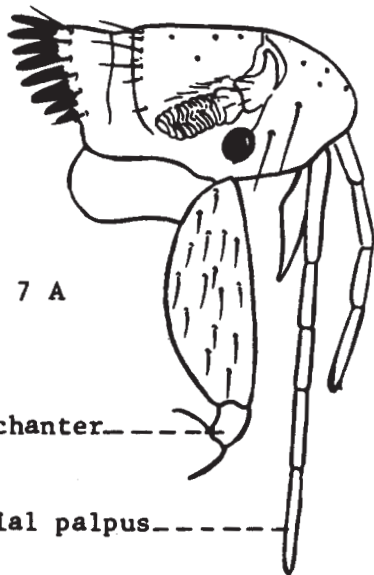


Fig. 7 A

trochanter-----

labial palpus-----

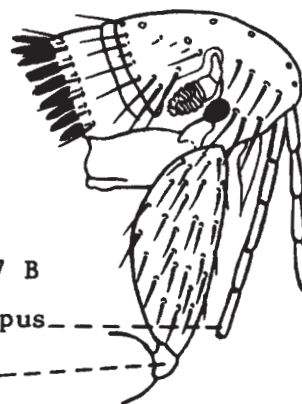


Fig. 7 B

labial palpus-----

trochanter-----

8. Genal comb with two teeth (Fig. 8 A).....(Genus Neopsylla)
Neopsylla setosa important in U. S. S. R., Mongolia and Manchuria.

Genal comb with three teeth (Fig. 8 B).....(Genus Ctenophthalmus)
Ctenophthalmus breviatus and pollex potential vectors in U. S. S. R.

Genal comb with four teeth (Fig. 8 C).....(Genus Leptopsylla)
Leptopsylla segnis is cosmopolitan.

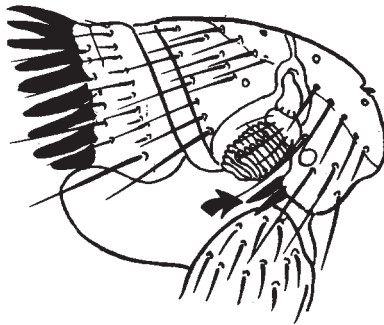


Fig. 8 A

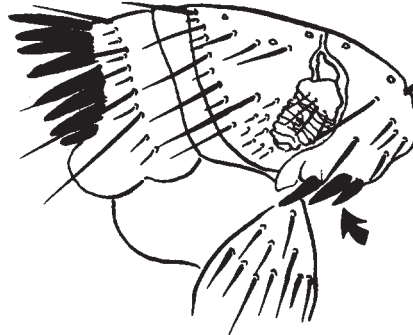


Fig. 8 B

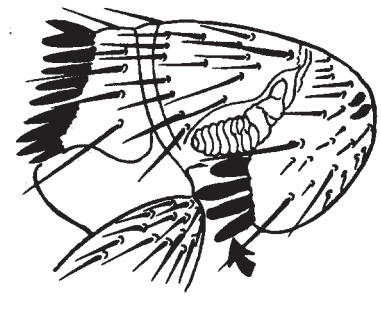


Fig. 8 C

Genal comb with more than five teeth.....(Genus Ctenocephalides). 9

9. Head strongly rounded anteriorly; first spine of genal comb about half as long as second; hind tibia with the spiniform setae A and B (Fig. 9 A & B).
Ctenocephalides canis.....DOG FLEA

Head not strongly convex anteriorly; first spine of genal comb almost as long as second spine; hind tibia with spiniform seta B, spiniform seta A replaced by a minute seta which may be absent in some specimens (Fig. 9 C & D). Ctenocephalides felis.....CAT FLEA

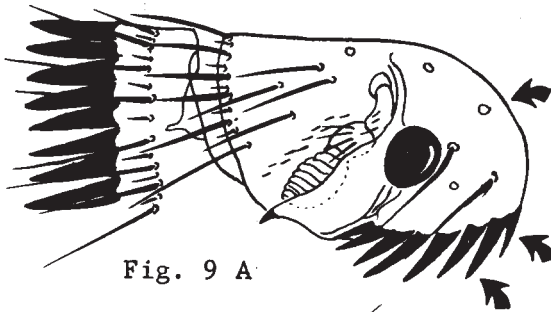


Fig. 9 A

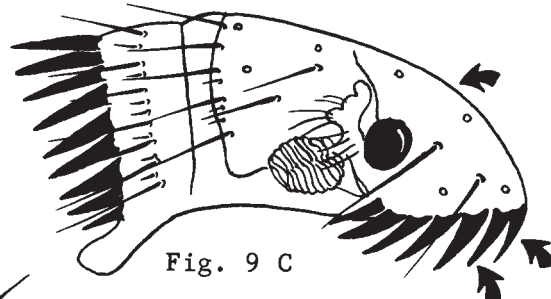


Fig. 9 C

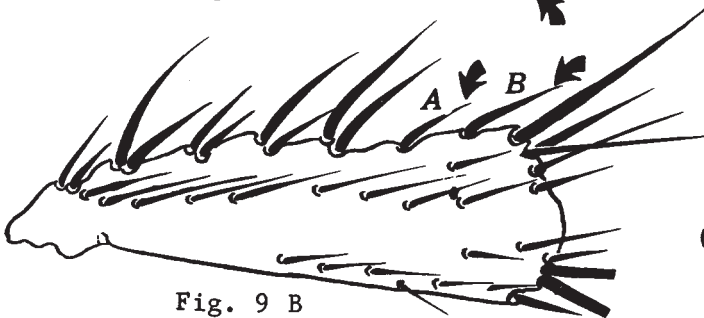


Fig. 9 B

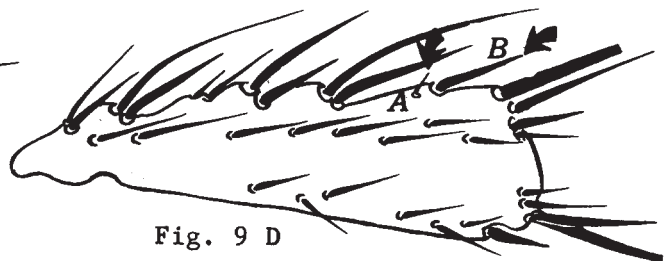


Fig. 9 D