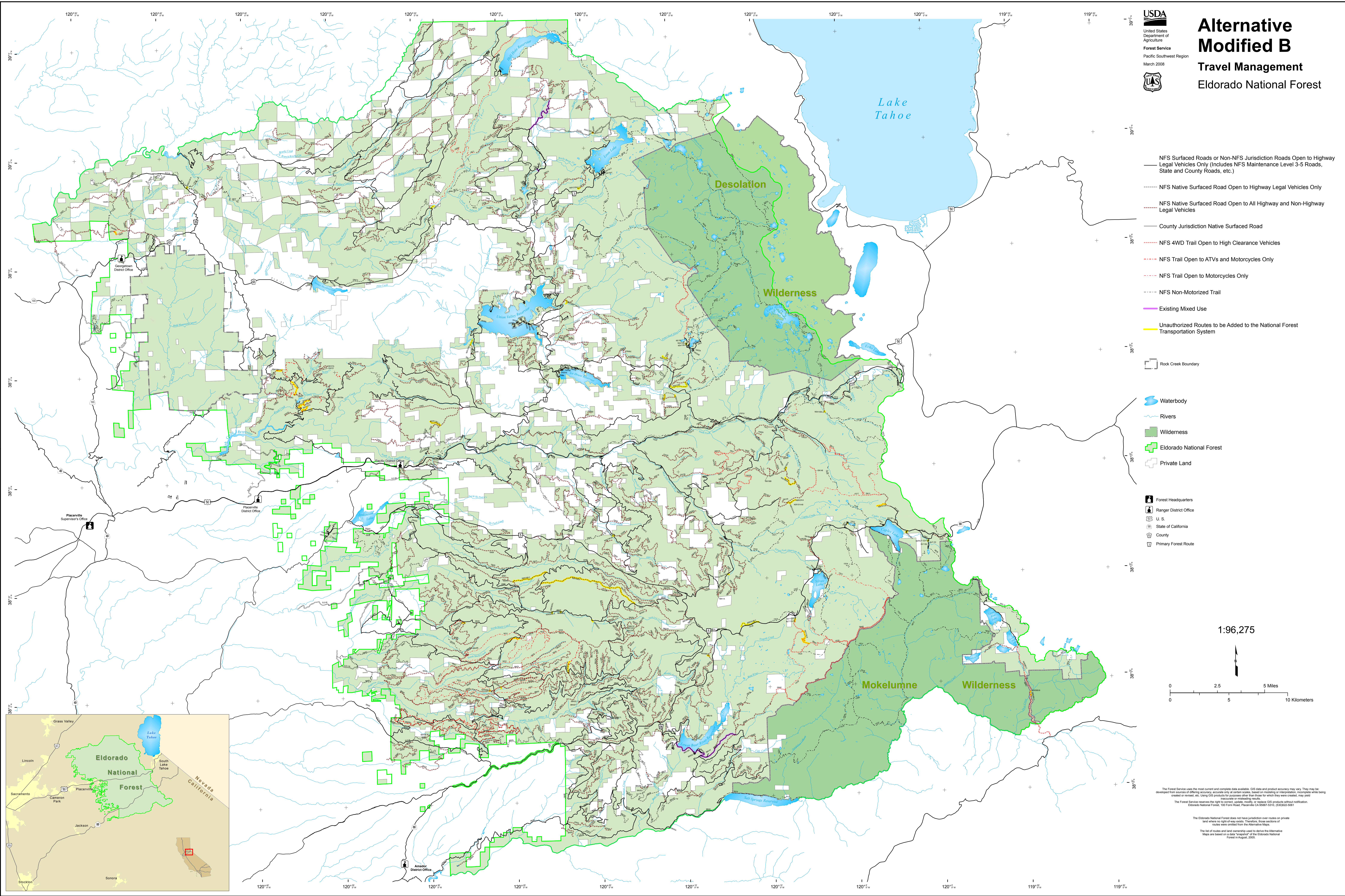


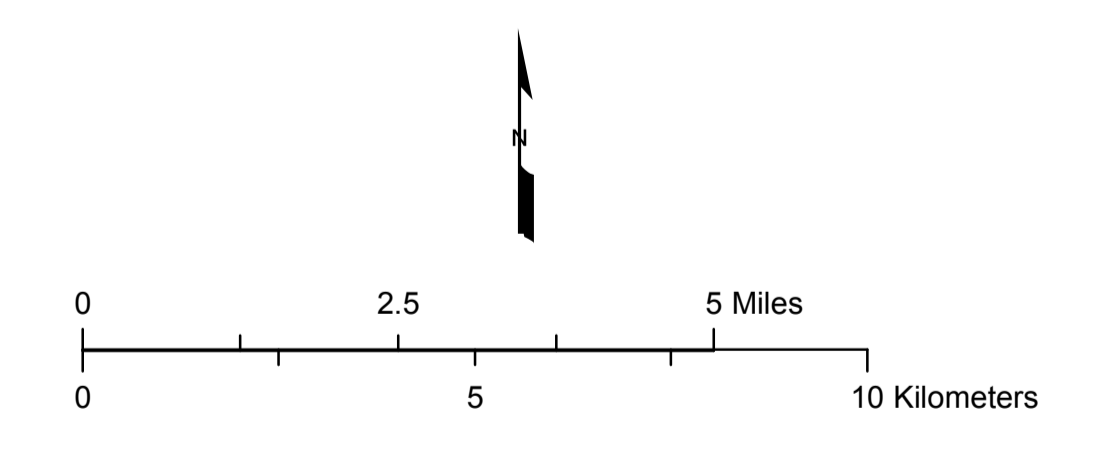


Alternative Modified B Travel Management Eldorado National Forest



- NFS Surfaced Roads or Non-NFS Jurisdiction Roads Open to Highway Legal Vehicles Only (Includes NFS Maintenance Level 3-5 Roads, State and County Roads, etc.)
- NFS Native Surfaced Road Open to Highway Legal Vehicles Only
- NFS Native Surfaced Road Open to All Highway and Non-Highway Legal Vehicles
- County Jurisdiction Native Surfaced Road
- NFS 4WD Trail Open to High Clearance Vehicles
- NFS Trail Open to ATVs and Motorcycles Only
- NFS Trail Open to Motorcycles Only
- NFS Non-Motorized Trail
- Existing Mixed Use
- Unauthorized Routes to be Added to the National Forest Transportation System
- Rock Creek Boundary
- Waterbody
- Rivers
- Wilderness
- Eldorado National Forest
- Private Land
- Forest Headquarters
- Ranger District Office
- U.S.
- State of California
- County
- Primary Forest Route

1:96,275



The Forest Service uses the most current and complete data available. GIS data and product accuracy may vary. They may be developed from sources of differing accuracy, accurate only at certain scales, based on modeling or interpretation, incomplete white being created or revised, or using GIS products for purposes other than those for which they were created. We do not warrant accuracy or reliability of these products. The Forest Service reserves the right to correct, update, modify, or replace GIS products without notification. Eldorado National Forest, 100 Crown Hill, Placerville, CA 95367-0300, (209)522-0501

The Eldorado National Forest does not have jurisdiction over routes on private land where no right-of-way exists. Therefore, these sections of routes were omitted from the Alternative B map.

The list of routes and land ownership used to derive the Alternative B map are based on a data "snapshot" of the Eldorado National Forest in August, 2005.