



2005 Annual Report

Northwest Center for Outcomes Research in Older Adults

A Center of Excellence

Seattle, Washington

HFP 83-027

Stephan D. Fihn, MD, MPH, Director

2005 Annual Report

Table of Contents

ANNUAL REPORT NARRATIVE SUMMARY	1
1 Overview	
2 Investigators	
3 Center Funding	
4 Research Projects	
5 Research Products and Dissemination	
6 Key Impacts (top 3)	
7 Key Services (top 3)	
8 National and Regional Leadership Roles	
9 Training Activities	

Appendices

2.1 ORGANIZATIONAL CHART	6
2.2 INVESTIGATORS (TABLE 1)	7
3.1 BUDGET INFORMATION (TABLE 2)	21
3.2 FUNDING CHARTS (FIGURES 1-4)	23
4.1 RESEARCH PROJECTS AND PROGRAMS (TABLE 3)	25
5.1 BIBLIOGRAPHY	35
6.1 KEY IMPACTS (TABLE 4)	59
7.1 KEY SERVICES (TABLE 5)	60
8.1 NATIONAL AND REGIONAL LEADERSHIP ROLES (TABLE 6)	62

1 Overview

The Northwest Center for Outcome Research in Older Adults is a collaborative effort of the Veterans Affairs Puget Sound Health Care System (VAPSHCS) and the Portland VA Medical Center. Major collaborating community institutions for this VA HSR&D Center of Excellence include the University of Washington School of Public Health and Community Medicine and School of Medicine in Seattle and the Oregon Health and Science University Division of Medical Informatics and Outcomes Research and Department of Public Health and Community Medicine in Portland. Investigators in the NW Center also have a long history of close collaboration with investigators at the Center for Health Studies of Group Health Cooperative Center (CHS). Since the Northwest Center relocated to its present quarters at Metropolitan Park in downtown Seattle, we are now on the same campus as CHS and have expanded work on joint projects through e-mail groups, joint seminars, and topic-based joint work groups including groups on health economics and biostatistics.

The mission of the Northwest Center is to perform state-of-the-art research, generate new knowledge and research methods, provide high caliber training in health services research, and assist VA policy makers in a rapidly changing health care environment. The research objectives of the Center are to provide information to improve the delivery of health services to veterans and to contribute to scientific progress in the field of health services research. We seek to accomplish these objectives by focusing on four emphasis areas:

Management of Chronic Disease in Primary and Specialty Care
Preservation of Independence in Older Adults
Evaluation of Alternative Delivery Systems
Basic Methodology in Health Services Research.

We will continue to advance the VA health services research agenda by conducting projects designed to provide information that can improve the delivery of health services to veterans and contribute to scientific progress in the field of health services research. We intend to continue to work with the HSR&D Service by addressing important health delivery issues identified by senior managers in Central Office and the networks.

2 Investigators

The Center presently has 28 core and 13 affiliate investigators who conduct an extensive program of health services research funded by a combination of VA and non-VA sources. The Center is fortunate to have a stable core of senior and mid-level investigators who are well funded and productive.

Consistent with new definitions of core and affiliate investigator, we added five core investigators and reduced our total affiliate investigators by seven. Daniel Kivlahan, PhD Associate Professor, Department of Psychiatry and Behavioral Sciences at the University of Washington, Director of the VA Center of Excellence in Substance Abuse Treatment and Education (CESATE) and Chair of our Research Review Committee; Greg Larsen MD Associate Professor of Medicine Oregon Health & Science University (OHSU); and Steven Dobscha MD Associate Professor, Dept of Psychiatry OHSU, and HSR&D Career Development Awardee shifted status from affiliate to core investigators. Our two new core investigators are Linda Ganzini MD MPH, Professor Psychiatry OHSU; Linda Humphrey MD MPH, Associate Professor, Dept of Medicine and Medical Information OHSU. Both are principle investigators on funded studies.

Career Development Awardee, Lisa Chew MD left VA in 2005 to accept a faculty position at the University of Washington based at Harborview Medicine where she will continue some of her research activities in health literacy. We have several strong CDA candidates applying in 2006.

We expect to increase our number of affiliate investigators in fiscal year 2006 due to our collaboration with Group Health Cooperative and our efforts to provide comprehensive proposal preparation and scientific review to support new VA investigators.

3 Center Funding

Funding to the Center in 2005 was 12.8 million, a 23% increase from 2004. The majority of this increase is due to the five senior researchers added as core investigators and their substantial federal non-VA funding. Our funding base reflects the continued solid leveraging of core funds, which now represents less than 6% (.0569) of total Center funding.

Supplemental funds from Central Office enabled us to upgrade our network servers and add programmers to the Annual Report Template team. The VA Puget Sound Health Care System continues to provide very strong support to the Northwest Center including costs of the lease and maintenance of our off-site office space. This support has enabled us to significantly expand VA activity and collaboration with other federal and non-federal organizations.

4 Research Projects

During 2005, the CoE supported a total of 114 active awards for research projects, research administration, and research training, a 24% increase from 2004. VA HSR&D-funded research projects during the reporting period included 14 Investigator Initiated Research (IIR/NRI) projects, 8 Training Programs, 6 Career Development, and 2 Career Scientist Awards. The CoE currently houses the Research Coordinating Center for the Ischemic Heart Disease QuERI, the Clinical Coordinating Center for the Spinal Cord Injury QuERI, and the Clinical Coordinating Center for the Substance Abuse QuERI; supporting their staff activities and 10 QuERI related projects.

Two new HSR&D projects were funded in 2005, Dr. Edmund Chaney's "Creating Healthy Vet Informatics Applications for Collaborative Care (CHIACC)" and Dr. Stephan Fihn's "Evaluating Quality of Care for Acute Coronary Syndromes in VHA." We received increased medical care funding for Dr. David Au's two studies "Lung and Colorectal Care Outcomes Research and Quality Surveillance Data System (CanCORS)" and "Shared Decision Making in End Stage Heart and Lung Disease," and we received additional NIH funding for Dr. Andrew Zhou's participation with the Neurobiology and Genetics of Autism and the National Alzheimer Disease Coordinating Centers.

The HSR&D program at the Portland VA Medical Center had substantial growth in its level of research activity. Dr. Mark Helfand, director of the Oregon Evidence-based Practice Center (EPC), funded by the Agency for Healthcare Research and Quality (AHRQ), focused on analyses of preventive healthcare practices and the evaluation of the comparative effectiveness of clinical therapies. Dr. Helfand received funding earlier this year to launch the Resource Center for AHRQ's research agenda related to the Medicare Modernization Act. AHRQ also awarded the John M. Eisenberg Clinical Decisions and Communications Science Center to Dr. David Hickam. The Eisenberg Center is housed in the Portland HSR&D program and will pursue a broad range of activities focusing on applying evidence about treatment effectiveness to develop new decision aids to enhance patient participation in clinical decision making. The Eisenberg Center also will develop multiple information tools for patient, provider, and policymaker audiences.

Maintenance of a diversified research portfolio is an ongoing goal of the CoE to provide stability and leveraging of core VA resources. Moreover, participation in a variety of funding programs engenders collaboration within VA and non-VA research communities.

5 Research Products and Dissemination

During the reporting period, Center investigators and trainees published 91 peer-reviewed articles

including publications in the American Journal of Medicine, Medical Care, American Journal of Epidemiology, Annals of Behavioral Medicine, Journal of General Internal Medicine, and the Journal of Nursing Administration. We also revised our Center web page to meet new VA guidelines and to make our publications, proposal preparation, data security and human subjects support tools available to a wider audience. The new intranet web address is <http://www1.va.gov/pshsrd>.

Three of our most recent and important publications are described below, highlighting their significant research findings and impacts:

1) Drs. Susan Hedrick and Edmund Chaney's paper "The Influence of Patient Preference on Depression Treatment in Primary Care" published in Annals of Behavioral Medicine is based on a positive effectiveness trial of collaborative care for depression in primary care. Collaborative care included consideration of the patient's treatment preference with regard to medication versus cognitive behavioral therapy. In this paper, they reported participants who were matched with their preferred treatment (72%) demonstrated more rapid improvement in depression symptomatology than unmatched participants. This finding supports the efficacy of taking into account patient preference in treatment planning. It was immediately picked up by news services and resulted in calls from multiple media outlets including Fortune, Center for Advancement of Health's Health Behavior News Service, American Medical News Service, Health Magazine, CNS Spectrums, and The International Journal of Neuropsychiatric Medicine. News services were interested in the fact that taking a consumer-oriented approach to depression care and explicitly including patients and their preferences in the treatment planning process had a beneficial impact on care.

2) Dr. Bevan Yueh's paper entitled "Development and Validation of the Effectiveness of Auditory Rehabilitation (EAR) Scale" published in Archives of Otolaryngology Head Neck Surgery describes a new two module evaluation scale. The Inner EAR assesses intrinsic hearing issues such as hearing in quiet and hearing in noise. The Outer EAR covers extrinsic concerns such as comfort and convenience. This scale is expected to become widely used in future hearing studies, because it has strong reliability and construct validity. In addition, it is more responsive to treatment effects than existing scales used in hearing rehabilitation. Furthermore, the scales are brief and decrease patient burden. Finally, the scale addresses previously unconsidered issues such as cosmetic appearance and comfort. Therefore, it is anticipated that Inner and Outer EAR will become an outcome measure in future studies of both existing hearing aids, but also new surgical technologies, such as bone-anchored hearing aids or middle ear implants.

3) Dr. Anne Sales' paper entitled "Nurse Staffing and Patient Outcomes in Veterans Administration Hospitals" published in Journal of Nursing Administration, compares nursing personnel in 125 VA Medical Centers, including registered nurses, practical or vocational nurses, and a broad group of nursing personnel such as nurse aides or unlicensed assistive personnel and RNs who participated in an international study using the same survey form. VHA RNs have higher job satisfaction overall than non-VHA. Within VHA, unlicensed assistive personnel appear to be the most satisfied and RN's the least satisfied. VHA nurses of all types, in this study and others, conveyed strong positive feelings about their patients and many view their job as more of a calling. The findings related to this article have already been widely disseminated among nursing leadership in VHA. Nurse executives have used the findings to launch programs to improve communication among nursing staff, recognition of high quality care, and other efforts to improve the practice environment. These findings, as well as locally initiated projects, has been part of the supporting documentation provided in application for Magnet Nursing Service recognition, an internationally recognized program administered through the American Nurses Credentialing Center. In addition, the methods and findings of this study have informed the development of the VA Nursing Outcomes Database, a national program under the Office of Nursing Services to standardize and measure nurse-sensitive indicators.

6 Key Impacts (top 3)

Throughout the year, study findings and impacts are disseminated through publications; final reports; and local, national, and international presentations. Three of our studies that specifically addressed VHA system-wide issues are highlighted below.

Under the auspices of the Veterans Millennium Health Care and Benefits Act (Public Law 106-117), VA established a pilot program to determine the “feasibility and practicability of enabling veterans to secure needed assisted living services as an alternative to nursing home care.” Dr. Susan Hedrick and colleagues evaluated this pilot program in seven Medical Centers in the Northwest VISN 20. Based upon data for 789 veterans who were placed in 142 facilities, this approach was demonstrated to be feasible and was associated with stability of health over a 12-month period when it may have been expected to decline. All stakeholders were very satisfied with these services. Adjusting for baseline differences, the total cost per resident of all health care paid for by VA during the 12-month period was significantly higher than for a comparison group. The overall assessment of the program was that assisted living could fill an important niche at a time when VA is facing a steep increase in the number of chronically ill elderly, however contracting for services presented barriers to implementation and costs were higher. A final report from the Assisted Living Pilot Program Evaluation was submitted to Congress with an accompanying letter by the Secretary of Veteran Affairs. The letter summarized the report findings and stated that VA was not seeking authority to provide assisted living services. This study was therefore used to help decide on the place of this type of care in VA and should be of use outside VA as well.

In response to concerns that outcomes of acute myocardial infarction in VA might be suboptimal, the Secretary established the cardiac care initiative which consisted of ten programs intended to improve acute cardiac care through VA. One of these efforts, the Development of a Cardiac Assessment and Tracking System – Catheterization Labs (CART-CL), involved the creation of a national system for tracking and reporting the outcomes of invasive cardiac procedures throughout VHA. The software for this effort is a collaborative effort with the Office of Patient Care Services and the Office of Quality and Performance and has been created by staff of the Ischemic Heart Disease QuERI in Denver and Seattle. It is currently in beta-testing and has been deployed at 18 VA medical centers. Over 10,000 records have been entered and stored in CART-CL to date. Plans are to continue upgrading of the software to incorporate many comments received and continue deployment to the remaining 52 catheterization laboratories within VA. All data entered into CART-CL is stored in a SQL database and will provide an unparalleled resource for both quality improvement and research.

Investigators Edmund Chaney (Co-PI) and Chuan-Fen Liu collaborated on a series of VA Mental Health QuERI Projects including “Translating Best Practices for Depression Care into VA Care Solutions” (TIDES) and the current “Expanding and Testing VA Collaborative Care Models for Depression” (Regional TIDES or ReTIDES) that are designed to foster improved evidence-based collaborative care for depression in primary care. Currently four VISNs: 10, 16, 22 and 23, have active TIDES sites. As one measure of impact, VISN 23 created and funded an initiative, “Depression, a Disease Management Approach,” at a total cost of approximately \$500,000 for FY 05, \$1,200,000 for FY 06, and recurring. The VISN has hired 8 Depression Care Managers to date who are trained and supported by ReTIDES. TIDES results show that this joint investment by researchers, administrators, and clinicians will have significant impact on depression symptomatology and quality of life of veterans. Project staff has been asked by QuERI to prepare the way for national rollout of evidence-based collaborative care for depression. Researchers are working with VA Offices of Patient Care, Primary Care, Mental Health, Quality and Performance, Employee Education, Nursing, Office of Information and others to facilitate eventual rollout.

7 Key Services (top 3)

Our directors, investigators and staff developed policies and procedures for our CoE. HSR&D

CoEs nationally, ORD and other national agencies. These policies have provided guidance and clarification to better meet new federal security and compliance requirements (data security/extraction, HIPAA, Human Subjects). We also continued to create and maintain national databases (AQUIP, ART, VANOD, CARTS-CL, CCFCFS) and participated in national associations (Scientific Review Boards, VA Statisticians) contributing substantially to the knowledge and collaboration between local and national research communities.

8 National and Regional Leadership Roles

For most of 2005, Dr. Stephan Fihn served as Acting Chief Research and Development Officer for the Office of Research and Development. During that time, he initiated and oversaw a major re-organization of the Office of Research and Development including a major overhaul of the career development program, restructuring of the finance office, planning for a national genomic medicine program. Since returning to his role as Director of the Northwest Center, he has resumed his position on the National Field Research Advisory Group.

Center investigators continue to influence health research and policy through leadership and service to a wide range of national organizations including the American College of Physicians, American Statistical Association, Society of General Internal Medicine, American Thoracic Society, Academy of Health, American Gastroenterological Association, Society of Medical Decision Making, and the U.S. Cochrane Center.

Investigators also provide services to a large variety of VA review panels, quality forums, external advisory boards, committees, and task forces. We will continue to provide leadership in the field and provide information nationally and internationally to ensure that lessons learned in VA can be applied to problems in the larger health care system.

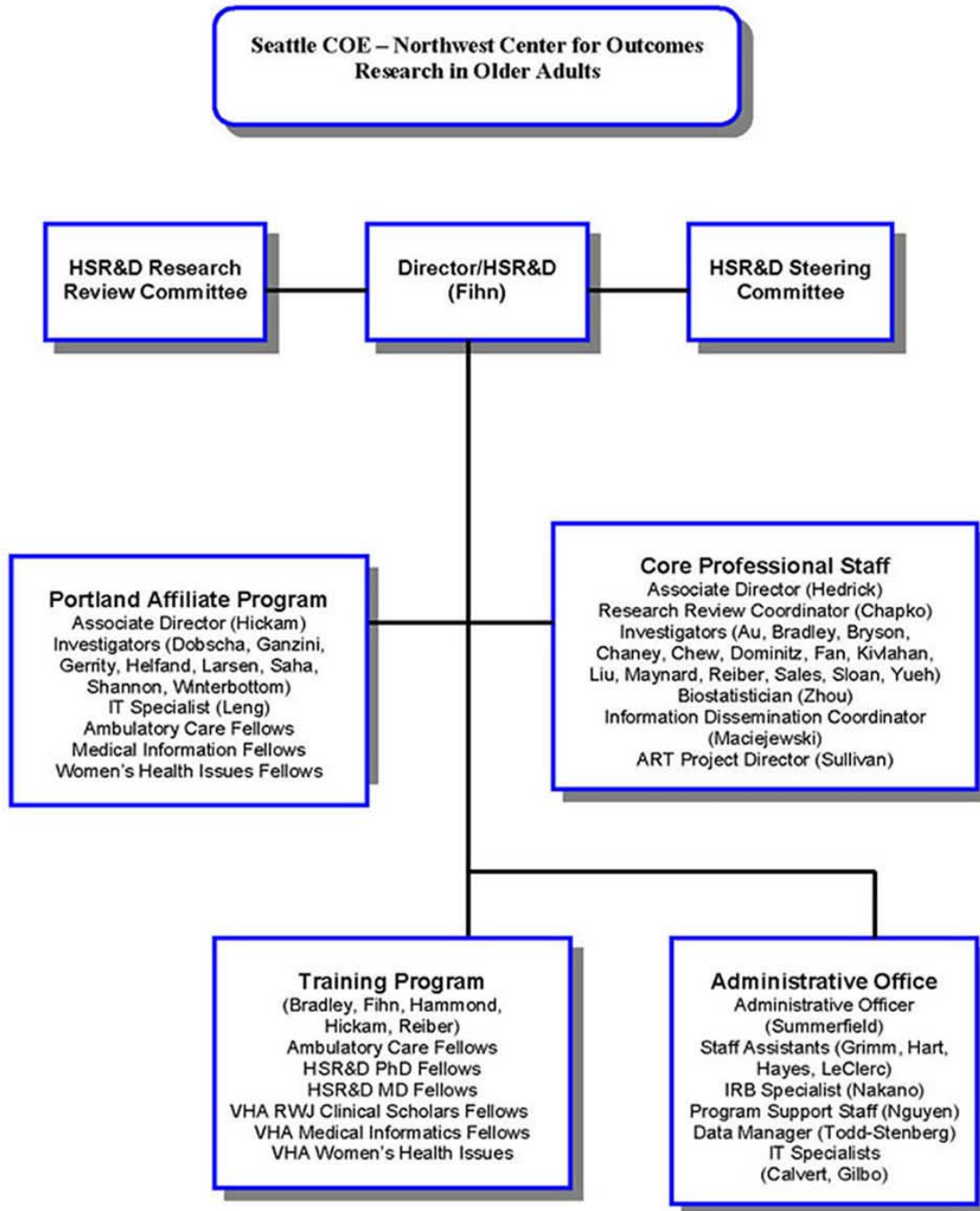
9 Training Activities

The training of postdoctoral MD and PhD fellows in Health Services Research remains a central mission with multiple successful training programs. During 2005, over 30 fellows were supported in the ten HSR&D, Ambulatory Care, Medical Informatics, Women's Health and Robert Wood Johnson postdoctoral MD and PhD fellowship programs at the Seattle and Portland VA Medical Centers.

The training program for physicians has been particularly successful. To date, the Center (Seattle and Portland) has sponsored training for 96 post-MD fellows of whom 75% have assumed academic positions. Overall, 16 of these fellows have successfully competed for VA career development awards.

The core staff also remains active in teaching in the Schools of Medicine and Public Health at the University of Washington and the Oregon Health and Science University, with several members of the core staff serving as course directors and all staff serving on thesis and dissertation committees. We will continue to help meet the need for well trained health services researchers in VA and elsewhere by continued focus on our teaching and fellowship programs.

2.1 Organizational Chart



2.2 Investigators (Table 1)

Seattle Center of Excellence Investigators (Core and Affiliate), FY 2005

	Degree(s)	Center Title(s)	Other VA Title(s)	University Title(s)	Year Joined FP	HSRD FTE*	VA Appt
Director, Research Center(s)							
Stephan D. Fihn	MD, MPH	Director Co-Director, Seattle VA Ambulatory Care and HSR&D Fellowship Programs Investigator	Acting Chief Research and Development Office, Veterans Health Administration Staff Physician	Head, Division of General Internal Medicine, University of Washington Professor, Departments of Medicine and Health Services, UW	1993	0.500	1.000

DRA(s): Chronic Diseases; Health Services and Systems

DRE(s): Diagnosis and Prognosis; Epidemiology; Quality of Care; Resource Use and Cost

INTERESTS: Ambulatory Care; Cardiovascular Diseases; Health Services Research; Women's Health

* FTE refers to percentage of Center time devoted to HSRD

Seattle Center of Excellence Investigators (Core and Affiliate), FY 2005

	Degree(s)	Center Title(s)	Other VA Title(s)	University Title(s)	Year Joined FP	HSRD FTE*	VA Appt
Core Investigator(s)							
David H. Au	MD, MS	Research Career Development Awardee	Staff Physician, Pulmonary and Critical Care Medicine	Adjunct Assistant Professor, Department of Pharmacy, Pharmaceutical Outcomes Research and Policy Program Assistant Professor of Medicine, Division of Pulmonary and Critical Care	1998	0.750	1.000
		DRA(s):	Chronic Diseases				
		DRE(s):	Diagnosis and Prognosis; Prevention; Treatment				
		INTERESTS:	Cancer; Cancer - Surveillance and Treatment Outcome; Cancer Control; Cancer Prevention and Control; Cardiovascular Diseases; Chronic Obstructive Pulmonary Disease (COPD); Epidemiology; Health Services Research; Outcome Assessment (Health Care); Quality Assurance, Health Care - Quality of Health Care; Quality of Life; Treatment Outcome				
Katharine A. Bradley	MD, MPH	Director, HSR&D Ambulatory Care Fellowship Program	Member, Resource Group, Epidemiologic Research and Information Center Staff Physician, Medicine Service Staff Physician, Medicine Service	Associate Professor of Medicine Adjunct Associate Professor, Department of Health Services	1994	0.750	0.750
		DRA(s):	Health Services and Systems; Substance Abuse, Addictive Disorders				
		DRE(s):	Diagnosis and Prognosis; Prevention				
		INTERESTS:	Alcohol Problems in Primary Care; Women's Health				
Christopher L. Bryson	MD, MS	Research Career Development Awardee	Staff Physician	Acting Instructor	2000	0.750	1.000
		DRA(s):	Chronic Diseases				
		DRE(s):	Diagnosis and Prognosis; Quality of Care; Treatment				
		INTERESTS:	Cardiovascular Diseases; Clinical Epidemiology; Databases; Outcome Assessment (Health Care); Pharmacoepidemiology and Adverse Drug Events; Prognosis				

Seattle Center of Excellence Investigators (Core and Affiliate), FY 2005

	Degree(s)	Center Title(s)	Other VA Title(s)	University Title(s)	Year Joined FP	HSRD FTE*	VA Appt
Edmund F. Chaney	PhD	Core Investigator	Director, Primary Care/Post Traumatic Stress Clinic Liaison Service Clinical Psychologist, Mental Health Service	Associate Professor, Department of Psychiatry and Behavioral Sciences	1997	0.500	1.000
		DRA(s):	Chronic Diseases; Mental Illness				
		DRE(s):	Treatment; Technology Development and Assessment				
		INTERESTS:	Depression in Primary Care				
Michael K. Chapko	PhD	Research Review Coordinator	Associate Director, NW Hepatitis C Resource Center Coordinator, Data Management, Epidemiologic Research and Information Center (ERIC)	Research Professor, Department of Health Services Member, International Health Program, School of Public Health	1992	1.000	1.000
		DRA(s):	Chronic Diseases; Health Services and Systems				
		DRE(s):	Communication and Decision Making; Quality of Care; Resource Use and Cost; Technology Development and Assessment				
		INTERESTS:	Ambulatory Care; Cost-Benefit Analysis; Databases; Decision Support Techniques; Multicenter Study				
Lisa D. Chew	MD, MPH	Research Career Development Awardee Core Investigator	Staff Physician		2002	0.750	1.000
		DRA(s):	Special (Underserved, High Risk) Populations				
		DRE(s):	Communication and Decision Making				
		INTERESTS:	Patient Education				

Seattle Center of Excellence Investigators (Core and Affiliate), FY 2005

	Degree(s)	Center Title(s)	Other VA Title(s)	University Title(s)	Year Joined FP	HSRD FTE*	VA Appt
Steven K. Dobscha	MD	Research Career Development Awardee, Portland Affiliate Core Investigator, Portland	Staff Psychiatrist, Portland VAMC	Associate Professor, Department of Psychiatry	2000	0.750	1.000
		<p>DRA(s): Health Services and Systems; Mental Illness; Special (Underserved, High Risk) Populations; Chronic Diseases</p> <p>DRE(s): Communication and Decision Making; Epidemiology; Treatment; Quality of Care; Resource Use and Cost</p> <p>INTERESTS: Alcohol Problems in Primary Care; Decision Support Techniques; Delivery of Health Care, Integrated; Depression; Depression in Primary Care; Education; Health Services Research; Outcome Assessment (Health Care); Pain; Treatment Outcome</p>					
Jason A. Dornitz	MD, MHS	Core Investigator	Director, Northwest Hepatitis C Resource Center Staff Physician, Gastroenterology Division Core Investigator, Epidemiologic Research and Information Center	Assistant Chief for Academic Affairs, Division of Gastroenterology Associate Professor of Medicine Affiliate Investigator, Division of Clinical Research, Fred Hutchinson Cancer Research Center	1997	0.200	1.000
		<p>DRA(s): Chronic Diseases; Health Services and Systems; Special (Underserved, High Risk) Populations</p> <p>DRE(s): Epidemiology; Prevention; Quality of Care; Treatment</p> <p>INTERESTS: Cancer; Databases; Epidemiology; Evidence-Based Medicine; Gastrointestinal Diseases; Hepatitis C; Liver Diseases; Patient Satisfaction; Practice Guidelines; Quality of Life</p>					
Vincent S. Fan	MD, MPH	Research Career Development Awardee Core Investigator	Staff Physician	Assistant Professor, Pulmonary and Critical Care	2003	0.750	1.000
		<p>DRA(s): Chronic Diseases; Health Services and Systems</p> <p>DRE(s): Diagnosis and Prognosis; Epidemiology; Etiology; Prevention; Quality of Care; Treatment; Resource Use and Cost</p> <p>INTERESTS: Behavioral Change; Chronic Obstructive Pulmonary Disease (COPD); Clinical Outcomes Prediction Tools; Continuity and Quality of Care; Health Outcomes; Health Related Quality of Life; Health Services Research; Patient Education; Patient Satisfaction; Quality of Care</p>					

Seattle Center of Excellence Investigators (Core and Affiliate), FY 2005

	Degree(s)	Center Title(s)	Other VA Title(s)	University Title(s)	Year Joined FP	HSRD FTE*	VA Appt
Linda K. Ganzini	MD, MPH	Core Investigator, Portland Affiliate	Staff Psychiatrist, Consult-Liaison Psychiatry Service and Outpatient Mental Health Director, Geriatric Psychiatry Fellowship Program, PVAMC	Senior Scholar, Center on Ethics in Health Care, OHSU Professor, Psychiatry, OHSU Professor, Medicine, OHSU Director, Division of Geriatric Psychiatry, OSHU	2005	0.050	1.000
		DRA(s):	Mental Illness				
		DRE(s):	Treatment				
		INTERESTS:	Cancer; Clinical Trials; Hospice Care				
Martha S. Gerrity	MD, MPH, PhD	Core Investigator, Portland Affiliate	Staff Physician, Section of General Medicine, Portland VAMC	Associate Professor, Department of Medicine, Oregon Health & Science University	1998	0.250	1.000
		DRA(s):	Health Services and Systems; Mental Illness; Chronic Diseases				
		DRE(s):	Communication and Decision Making; Quality of Care				
		INTERESTS:	Chronic Disease; Depression in Primary Care; Education; Evidence-Based Medicine; Health Services Research; Pain; Physician Practice Patterns; Psychometrics; Teaching				
Susan C. Hedrick	PhD	Associate Director Research Career Scientist		Professor, Department of Health Services	1983	1.000	1.000
		DRA(s):	Aging and Age-Related Changes; Health Services and Systems				
		DRE(s):	Resource Use and Cost; Treatment				
		INTERESTS:	Chronic Disease; Frail Elderly; Long-Term Care				
Mark Helfand	MD, MPH, MS	Core Investigator, Portland Affiliate	Staff Physician, Division of Hospital and Specialty Medicine, Portland VAMC	Professor, Medicine and Medical Informatics & Clinical Epidemiology Director, Oregon Evidence-Based Practice Center, Oregon Health & Science University Senior Investigator, Kaiser Center for Health Research, Portland	1999	0.650	1.000
		DRA(s):	Health Services and Systems				
		DRE(s):	Communication and Decision Making; Technology Development and Assessment				
		INTERESTS:	Cost-Effectiveness of Primary Care; Evidence-Based Medicine; Practice Guidelines				

Seattle Center of Excellence Investigators (Core and Affiliate), FY 2005

	Degree(s)	Center Title(s)	Other VA Title(s)	University Title(s)	Year Joined FP	HSRD FTE*	VA Appt
David H. Hickam	MD, MPH	Associate Director, COE, Portland Affiliate Director, Ambulatory Care and Medical Informatics Fellowships	Chairperson, Drug Seeking Behavior Committee Staff Physician, Division of Hospital and Specialty Medicine President, Portland VA Research Foundation Member, Clinical Practices and Standards Committee	Professor, Departments of Medicine, Public Health & Preventive Medicine, and Medical Informatics & Clinical Epidemiology Director, Center for Clinical Information Analysis and Decision Support Member, University Grievance Panel Chairperson, Promotion and Tenure Committee, Department of Medical Informatics and Clinical Epidemiology	1983	0.500	1.000
		DRA(s):	Chronic Diseases; Health Services and Systems				
		DRE(s):	Communication and Decision Making; Technology Development and Assessment				
		INTERESTS:	Clinical Decision-Making; Outcome (Patient) Preferences; Patient Outcomes; Physician-Patient Relations				
Linda L. Humphrey	MD, MPH	Core Investigator, Portland Affiliate	Director, Veterans Affairs Fellowship in Women's Health Staff Physician, Section of General Internal Medicine	Associate Professor, Departments of Medicine, Medical Informatics & Clinical Epidemiology	2004	0.100	1.000
		DRA(s):	Chronic Diseases; Health Services and Systems				
		DRE(s):	Diagnosis and Prognosis; Prevention; Quality of Care				
		INTERESTS:	Cancer; Cancer Control; Cancer Prevention and Control; Cardiovascular Diseases; Chronic Disease; Chronic Disease Epidemiology; Chronic Illness; Clinical Epidemiology				
Daniel R. Kivlahan	PhD	Chair, Research Review Committee Core Investigator	Director, Center of Excellence in Substance Abuse Treatment and Education (CESATE)	Associate Professor, Department of Psychiatry and Behavioral Sciences Adjunct Associate Professor, Addictive Behaviors Research Center, Department of Psychology	1997	0.600	1.000
		DRA(s):	Mental Illness; Substance Abuse, Addictive Disorders				
		DRE(s):	Diagnosis and Prognosis; Epidemiology; Prevention; Treatment; Quality of Care				
		INTERESTS:	Alcohol Problems in Primary Care; Clinical Trials; Continuity and Quality of Care; Diagnosis, Dual (Psychiatry); Health Services Research; Hepatitis C; Post Traumatic Stress Syndrome; Practice Guidelines; Primary Care for Substance Abusing Patients; Substance Abuse Treatment				

Seattle Center of Excellence Investigators (Core and Affiliate), FY 2005

	Degree(s)	Center Title(s)	Other VA Title(s)	University Title(s)	Year Joined FP	HSRD FTE*	VA Appt
Greg C. Larsen	MD	Core Investigator, Portland Affiliate	Chief, Cardiology Section Staff Cardiologist Director, Cardiac Catheterization Laboratory	Associate Professor of Medicine, Oregon Health & Science University	2002	0.050	1.000
		DRA(s):	Chronic Diseases				
		DRE(s):	Communication and Decision Making				
		INTERESTS:	Cardiology; Cardiovascular Diseases				
Chuan-Fen Liu	MPH, PhD	Core Investigator/Economist Coordinator, Monthly Research Colloquium		Research Assistant Professor, Department of Health Services	1998	1.000	1.000
		DRA(s):	Health Services and Systems; Mental Illness				
		DRE(s):	Resource Use and Cost				
		INTERESTS:	Cost-Effectiveness Analysis; Depression in Primary Care; Health Care Policy; Health Economics; Health Services Research; Program Analysis and Evaluation; Resource Use and Cost of VA Care; Risk Adjustment; Utilization and Cost of Health Care				
Matthew L. Maciejewski	PhD	Core Investigator/Economist		Associate Professor, Department of Health Services	1998	1.000	1.000
		DRA(s):	Chronic Diseases; Health Services and Systems; Special (Underserved, High Risk) Populations				
		DRE(s):	Prevention; Quality of Care; Resource Use and Cost; Technology Development and Assessment				
		INTERESTS:	Diabetes Mellitus; Health Care Costs and Cost Analysis; Health Economics; Managed Care Programs; Outcome Assessment (Health Care); Patient Selection				
Charles C. Maynard	PhD, MSW	Core Investigator		Research Professor, Department of Health Services	1998	0.800	IPA
		DRA(s):	Chronic Diseases; Substance Abuse, Addictive Disorders				
		DRE(s):	Epidemiology; Treatment				
		INTERESTS:	Cardiovascular Diseases; Databases; Statistical Methodology				

Seattle Center of Excellence Investigators (Core and Affiliate), FY 2005

	Degree(s)	Center Title(s)	Other VA Title(s)	University Title(s)	Year Joined FP	HSRD FTE*	VA Appt
Gayle E. Reiber	MPH, PhD	Research Career Scientist Director, Postdoctoral PhD Training Program	Core Investigator, Seattle Center of Excellence for Limb Loss, Prevention and Prosthetics Engineering	Professor, Departments of Health Services and Epidemiology	1991	1.000	1.000
		DRA(s): Chronic Diseases; Health Services and Systems; Sensory Disorders and Loss; Special (Underserved, High Risk) Populations					
		DRE(s): Epidemiology; Prevention; Rehabilitation; Resource Use and Cost; Technology Development and Assessment					
		INTERESTS: Diabetes Mellitus					
Somnath Saha	MD, MPH	Advanced Research Career Development Awardee, Portland Affiliate	Member, Research and Development Committee, PVAMC Staff Physician, Division of Hospital and Specialty Medicine	Associate Professor of Medicine, Medical Informatics & Clinical Epidemiology and Public Health & Preventive Medicine	1996	0.750	1.000
		DRA(s): Health Services and Systems; Special (Underserved, High Risk) Populations					
		DRE(s): Communication and Decision Making; Quality of Care					
		INTERESTS: Cultural Diversity; Health Services Accessibility; Minority Groups; Patient Acceptance of Health Care; Professional-Patient Relations; Racial Differences in Care					
Anne E. Sales	PhD, MSN, RN	Core Investigator		Associate Professor, Department of Health Services Adjunct Associate Professor, Department of Biobehavioral Nursing and Health System	1996	1.000	1.000
		DRA(s): Chronic Diseases; Health Services and Systems; Aging and Age-Related Changes					
		DRE(s): Quality of Care; Resource Use and Cost; Communication and Decision Making; Treatment					
		INTERESTS: Cardiology; Cardiovascular Diseases; Cost-Benefit Analysis; Health Care Costs and Cost Analysis; Nursing; Organizational Innovation; Personnel Staffing and Scheduling; Quality Management					
Jackilen Shannon	PhD, MPH	Core Investigator, Portland Affiliate	Research Scientist, Portland VA Research Foundation	Assistant Professor, Public Health and Preventive Medicine, Oregon Health & Science University	2000	0.650	1.000
		DRA(s): Chronic Diseases					
		DRE(s): Epidemiology					
		INTERESTS: Cancer; Prevention; Women's Health					

Seattle Center of Excellence Investigators (Core and Affiliate), FY 2005

	Degree(s)	Center Title(s)	Other VA Title(s)	University Title(s)	Year Joined FP	HSRD FTE*	VA Appt
Kevin L. Sloan	MD	Core Investigator	Core Investigator, Epidemiologic Research and Information Center (ERIC) Core Investigator, Northwest Hepatitis C Field Based Resource Center (HCRC) Investigator, Mental Health Quality Enhancement Research Initiative (QUERI) Chief, Dual Disorders Program, Addictions Treatment Center, Mental Health Service	Associate Professor, Department of Psychiatry and Behavioral Sciences	1999	0.050	1.000
			DRA(s): Health Services and Systems; Mental Illness; Special (Underserved, High Risk) Populations; Substance Abuse, Addictive Disorders				
			DRE(s): Resource Use and Cost; Quality of Care; Communication and Decision Making				
			INTERESTS: Comorbidity; Health Economics; Hierarchical Statistical Models; Practice Patterns; Risk Adjustment				
Bevan Yueh	MD, MPH	Core Investigator	Chief, Otolaryngology Service Staff Surgeon	Associate Professor, Department of Otolaryngology/Head & Neck Surgery Director, Outcomes Research Unit, Department of Otolaryngology Adjunct Associate Professor, Department of Health Services	1998	0.750	1.000
			DRA(s): Aging and Age-Related Changes; Sensory Disorders and Loss				
			DRE(s): Diagnosis and Prognosis; Resource Use and Cost; Rehabilitation				
			INTERESTS: Cancer; Neoplasms; Otolaryngologic Disorders; Quality of Life				

Seattle Center of Excellence Investigators (Core and Affiliate), FY 2005

	Degree(s)	Center Title(s)	Other VA Title(s)	University Title(s)	Year Joined FP	HSRD FTE*	VA Appt
Xiao-Hua Andrew Zhou	PhD, MSc	Core Investigator/Senior Biostatistician		Adjunct Full Professor, Department of Psychiatry and Behavioral Sciences Professor, Departments of Biostatistics and Public Health and Community Medicine	2002	0.750	0.750
		DRA(s):	Aging and Age-Related Changes; Chronic Diseases; Health Services and Systems; Mental Illness; Substance Abuse, Addictive Disorders				
		DRE(s):	Diagnosis and Prognosis; Epidemiology; Quality of Care; Resource Use and Cost; Technology Development and Assessment				
		INTERESTS:	Biostatistics; Clinical Trials; Epidemiology; Health Care Costs and Cost Analysis; Outcome Assessment (Health Care); Qualitative Methods; Quality of Life; Research Design; Sample Size				

* FTE refers to percentage of Center time devoted to HSRD

Seattle Center of Excellence Investigators (Core and Affiliate), FY 2005

	Degree(s)	Center Title(s)	Other VA Title(s)	University Title(s)	Year Joined FP	HSRD FTE*	VA Appt
Affiliate Investigator(s)							
Bradley D. Anawalt	MD, BS	Affiliate Investigator	Assistant Chief of Medicine Staff Physician, General Internal Medicine and Endocrinology	Associate Professor, University of Washington Associate Residency Program Director, University of Washington	2005	0.500	1.000
Charles D. Blanke	MD	Affiliate Investigator, Portland Affiliate	Staff Physician	Director, Oregon Health and Science University Cancer Institute Dsolid Tumkor Oncology Program Associate Professor, Division of Hematology and Medical Oncology	2004	0.100	1.000
		DRA(s):	Chronic Diseases				
		DRE(s):	Diagnosis and Prognosis; Quality of Care; Treatment				
		INTERESTS:	Cancer Prevention and Control; Gastrointestinal Diseases				
Edward J. Boyko	MD, MPH	Affiliate Investigator	Staff Physician Director, Seattle Epidemiologic Research & Information Center (ERIC) Chief, General Internal Medicine Section Director, Vietnam Era Twin Registry (VETR), Department of Veterans Affairs	Professor, Department of Medicine Adjunct Professor, Departments of Epidemiology and Health Services	1993	0.500	1.000
		DRA(s):	Chronic Diseases				
		DRE(s):	Epidemiology				
		INTERESTS:	Diabetic Neuropathy; Lower Extremity Amputation; Visceraladiposity				
Stephen P. Burns	MD	Affiliate Investigator	Staff Physician	Assistant Professor, Department of Rehabilitation Medicine	2003	0.050	1.000

Seattle Center of Excellence Investigators (Core and Affiliate), FY 2005

	Degree(s)	Center Title(s)	Other VA Title(s)	University Title(s)	Year Joined FP	HSRD FTE*	VA Appt
Paula K. Diehr	PhD	Affiliate Investigator		Professor, Departments of Biostatistics and Health Services Member, Fred Hutchinson Cancer Research Center	1990	0.100	IPA
		DRA(s):	Aging and Age-Related Changes; Health Services and Systems				
		DRE(s):	Quality of Care; Resource Use and Cost				
		INTERESTS:	Health Care Costs and Cost Analysis; Quality of Life				
Barry Goldstein	MD, PhD	Affiliate Investigator	Attending Physician, Spinal Cord Injury Service Associate Chief Consultant, Spinal Cord Injury and Disorders Healthcare Group	Associate Professor, Department of Rehabilitation Medicine Attending Physician, Department of Rehabilitation Medicine, Harborview Medical Center	2001	0.200	1.000
		DRA(s):	Acute and Traumatic Injury; Aging and Age-Related Changes; Chronic Diseases; Special (Underserved, High Risk) Populations				
		DRE(s):	Rehabilitation; Prevention; Quality of Care				
		INTERESTS:	Adult Immunizations; Aging; Behavior; Functional Status; Health Behavior; Obesity; Pain; Rehabilitative Care; SCI; Spinal Cord Injury and Rehabilitation				
Kenric W. Hammond	MD	Director, Medical Informatics Postdoctoral Fellowship Affiliate Investigator	Staff Psychiatrist, Mental Health Clinic, American Lake Division	Joint Clinical Associate Professor, Division of Biomedical Informatics, Medical Education and Department of Psychiatry and Behavioral Sciences	1988	0.200	1.000
		DRA(s):	Mental Illness; Health Services and Systems				
		DRE(s):	Resource Use and Cost; Quality of Care				
		INTERESTS:	Information Services/MT				
Margaret C. Hammond	MD	Chief Consultant, Spinal Cord Injury and Disorders Strategic Healthcare Group Affiliate Investigator	Chief, Spinal Cord Injury Service Physiatrist and Staff Physician	Professor, Department of Rehabilitation Medicine Graduate Faculty, Department of Rehabilitation Medicine	1998	0.050	1.000
		DRA(s):	Acute and Traumatic Injury; Chronic Diseases; Special (Underserved, High Risk) Populations				
		DRE(s):	Rehabilitation; Treatment				
		INTERESTS:	Spinal Cord Injury and Rehabilitation				

Seattle Center of Excellence Investigators (Core and Affiliate), FY 2005

	Degree(s)	Center Title(s)	Other VA Title(s)	University Title(s)	Year Joined FP	HSRD FTE*	VA Appt
Karin M. Nelson	MD, MSHS	Affiliate Investigator	Staff Physician, General Internal Medicine	Assistant Professor, Department of Medicine	2001	0.100	1.000
		DRA(s):	Chronic Diseases; Health Services and Systems				
		DRE(s):	Epidemiology; Prevention				
		INTERESTS:	Behavior and Behavioral Mechanisms; Chronic Disease; Diabetes Mellitus; Health Care Policy; Health Services Research; Knowledge, Attitudes, Practice; Self Care				
Andrew J. Saxon	MD	Affiliate Investigator	Director, Addictions Patient Care Line, Mental Health Service Staff Psychiatrist, Alcohol and Drug Dependency Treatment Programs	Professor, Department of Psychiatry & Behavioral Sciences	1999	0.200	1.000
		DRA(s):	Mental Illness; Substance Abuse, Addictive Disorders				
		DRE(s):	Treatment				
		INTERESTS:	Primary Care for Substance Abusing Patients				
Bonnie G. Steele	PhD, RN	Affiliate Investigator	Respiratory Clinical Nurse Specialist	Clinical Assistant Professor, Department of Biobehavioral Nursing and Health Care Systems	1996	0.200	1.000
		DRA(s):	Chronic Diseases				
		DRE(s):	Quality of Care; Rehabilitation; Technology Development and Assessment				
		INTERESTS:	Chronic Obstructive Pulmonary Disease (COPD); Smoking Cessation				
Lisa M. Winterbottom	MD, MPH	Affiliate Investigator, Portland Affiliate	Clinic Preceptor, Portland VAMC and Oregon Health & Science University Staff Physician Director, The Portland Center for the Evaluation of Clinical Services	Assistant Professor of Medicine	1997	0.200	1.000
		DRA(s):	Chronic Diseases; Health Services and Systems				
		DRE(s):	Diagnosis and Prognosis; Epidemiology				
		INTERESTS:	Evidence-Based Medicine; Teaching				

Seattle Center of Excellence Investigators (Core and Affiliate), FY 2005

	Degree(s)	Center Title(s)	Other VA Title(s)	University Title(s)	Year Joined FP	HSRD FTE*	VA Appt
Bessie A. Young	MD, MPH	Affiliate Investigator	Staff Physician, Nephrology	Director, Home Hemodialysis, NW Kidney Centers, Seattle Assistant Professor, Department of Medicine	1998	0.050	0.200

DRA(s): Chronic Diseases; Health Services and Systems; Special (Underserved, High Risk) Populations

DRE(s): Diagnosis and Prognosis; Epidemiology

INTERESTS: Chronic Disease Epidemiology; Diabetes Mellitus; Nephrology; Prevention; Quality of Care; Racial Differences in Care; Treatment Outcome

* FTE refers to percentage of Center time devoted to HSRD

Count = 41

3.1 Budget Information (Table 2)

Seattle Center of Excellence Budget Information

	Fiscal Year Funding					Number Of Projects				
	2001	2002	2003	2004	2005	2001	2002	2003	2004	2005
Funding Source(s)										
HSR&D										
Core	\$600,000	\$600,000	\$708,000	\$728,000	\$708,000	1	1	1	2	2
Supplemental Funds	\$448,405	\$165,100	\$298,610	\$451,995	\$632,617	5	4	2	2	3
IIR	\$470,155	\$892,033	\$1,111,733	\$1,292,273	\$1,517,587	7	8	5	9	13
SDR	\$0	\$0	\$145,563	\$234,246	\$341,606	0	0	1	1	2
Career Development	\$361,701	\$624,660	\$648,571	\$752,216	\$718,672	4	5	5	7	6
Career Scientist	\$230,605	\$247,380	\$268,897	\$284,259	\$307,454	2	2	2	2	2
NRI	\$138,575	\$121,380	\$121,380	\$160,400	\$39,703	1	1	1	1	1
LIP - HSR&D	\$2,000	\$45,017	\$50,000	\$0	\$0	2	7	2	1	0
QUERI Projects	\$0	\$0	\$563,542	\$1,017,773	\$653,192	0	0	4	6	5
Other Center	\$20,159	\$19,353	\$8,706	\$2,903	\$0	1	1	2	2	0
USA	\$0	\$25,000	\$50,000	\$50,000	\$25,000	0	1	1	1	1
Admin & Travel Reimburseme	\$0	\$0	\$141,271	\$95,785	\$70,978	0	0	2	3	5
OAA - HSR&D Supplement	\$0	\$0	\$0	\$70,000	\$77,000	0	0	0	4	4
Sub Total	\$2,271,600	\$2,739,923	\$4,116,273	\$5,139,850	\$5,091,809	23	30	28	41	44
Medical Care										
QUERI Center Core	\$459,594	\$400,000	\$350,000	\$514,275	\$648,482	2	2	2	3	6
QUERI Projects - MC	\$1,032,552	\$543,890	\$410,289	\$319,204	\$391,422	6	6	7	6	7
MRC - MC	\$0	\$0	\$218,066	\$187,641	\$337,961	0	0	1	2	2
SDR - MC	\$0	\$0	\$0	\$0	\$395,376	0	0	0	0	1
Admin & Equipment Reimburs	\$0	\$0	\$0	\$14,200	\$11,400	0	0	0	4	2
Admin & Travel Reimburseme	\$0	\$0	\$13,809	\$38,004	\$5,196	0	0	2	2	2
Sub Total	\$1,492,146	\$943,890	\$992,164	\$1,073,324	\$1,789,837	8	8	12	17	20

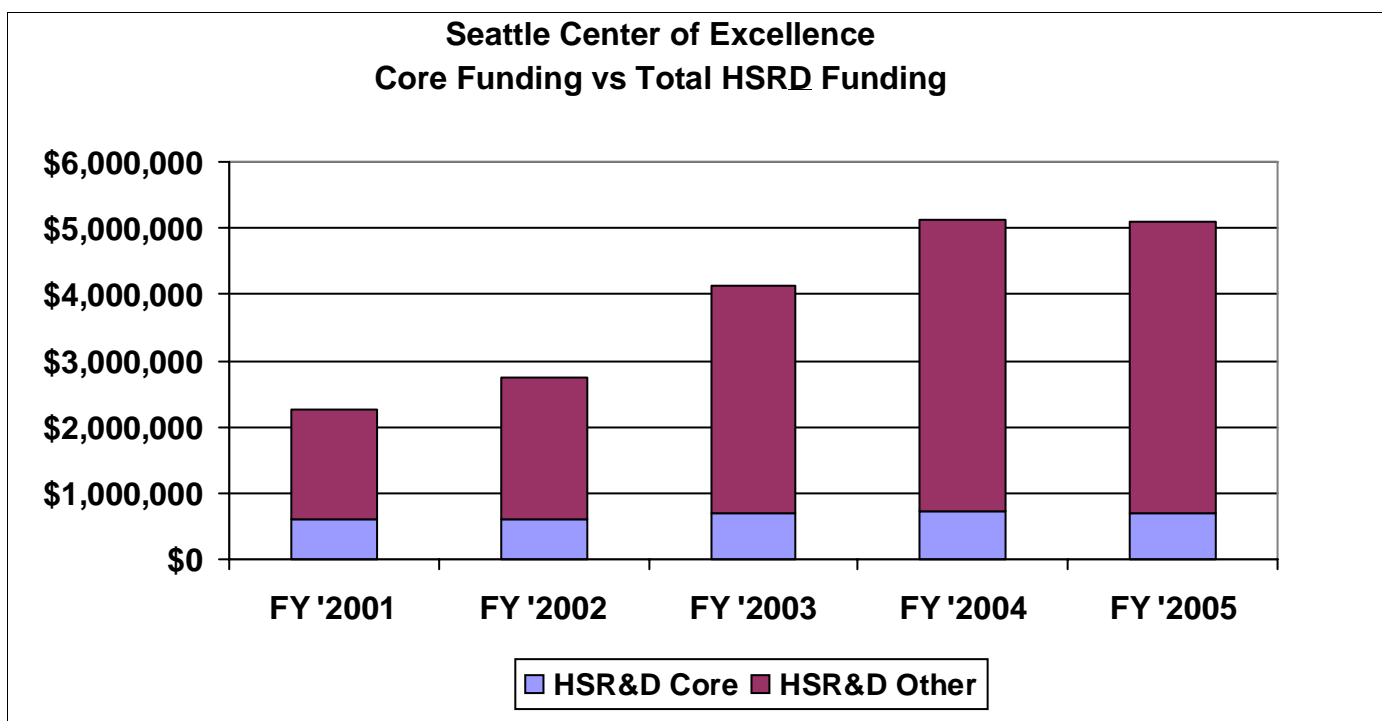
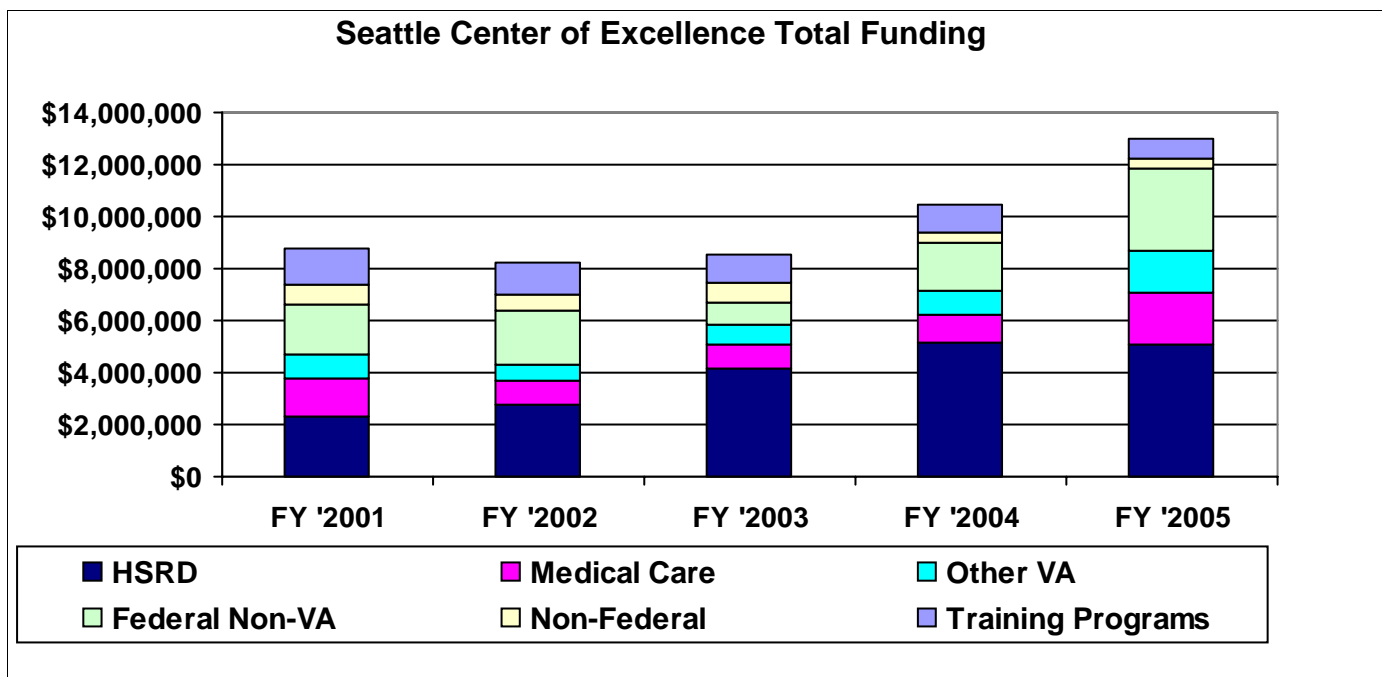
Other VA										
CSP	\$524,409	\$120,510	\$0	\$0	\$0	2	1	0	0	0
Core - Administrative Contribu	\$0	\$0	\$0	\$179,981	\$649,000	0	0	0	2	2
RR&D	\$215,700	\$206,400	\$93,007	\$0	\$125,800	2	1	1	1	2
Other	\$85,533	\$207,012	\$604,237	\$744,851	\$750,303	2	3	3	4	2
VISN	\$81,288	\$24,947	\$0	\$0	\$0	2	1	0	0	0
Other Center	\$33,378	\$74,840	\$43,657	\$0	\$109,555	2	3	2	0	5
Sub Total	\$940,308	\$633,709	\$740,901	\$924,832	\$1,634,658	10	9	6	7	11
Federal Non-VA										
NIH	\$619,051	\$555,972	\$453,169	\$484,109	\$2,370,403	10	5	13	8	19
AHRQ	\$834,543	\$1,031,364	\$367,738	\$1,229,844	\$770,210	11	10	10	7	6
Other	\$485,374	\$454,857	\$0	\$24,190	\$20,000	6	7	1	2	1
QUERI Projects	\$0	\$0	\$14,400	\$130,000	\$0	0	0	1	1	0
Sub Total	\$1,938,968	\$2,042,193	\$835,307	\$1,868,143	\$3,160,613	27	22	25	18	26
Non-Federal										
Foundations	\$670,241	\$367,336	\$101,575	\$113,245	\$304,560	13	11	8	5	10
Commercial	\$0	\$66,720	\$100,499	\$0	\$0	0	4	4	1	0
Other	\$93,208	\$178,602	\$575,654	\$271,357	\$55,174	11	8	7	4	6
Sub Total	\$763,449	\$612,658	\$777,728	\$384,602	\$359,734	24	23	19	10	16
Training Programs										
OAA	\$1,340,785	\$1,247,603	\$1,080,682	\$1,038,019	\$823,491	37	39	8	8	8
Sub Total	\$1,340,785	\$1,247,603	\$1,080,682	\$1,038,019	\$823,491	37	39	8	8	8
Totals	\$8,747,256	\$8,219,976	\$8,543,055	\$10,428,770	\$12,860,142	129	131	98	101	125

Total Number Of Unique Projects

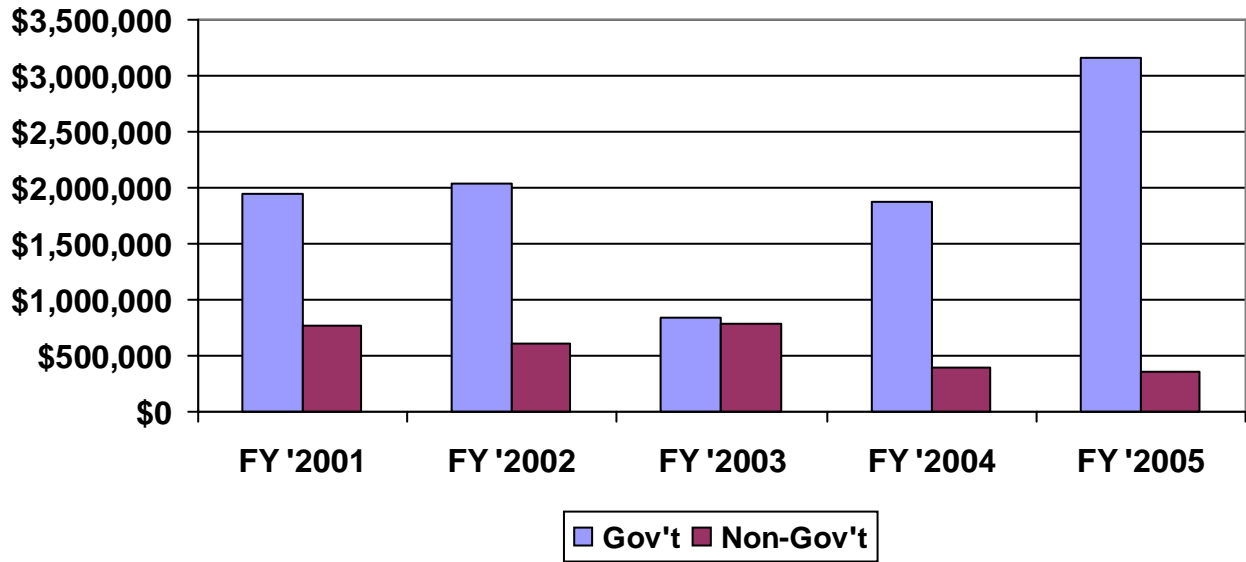
2001	2002	2003	2004	2005
129	131	98	92	114

Note: Projects are counted only once if they have multiple funding sources.

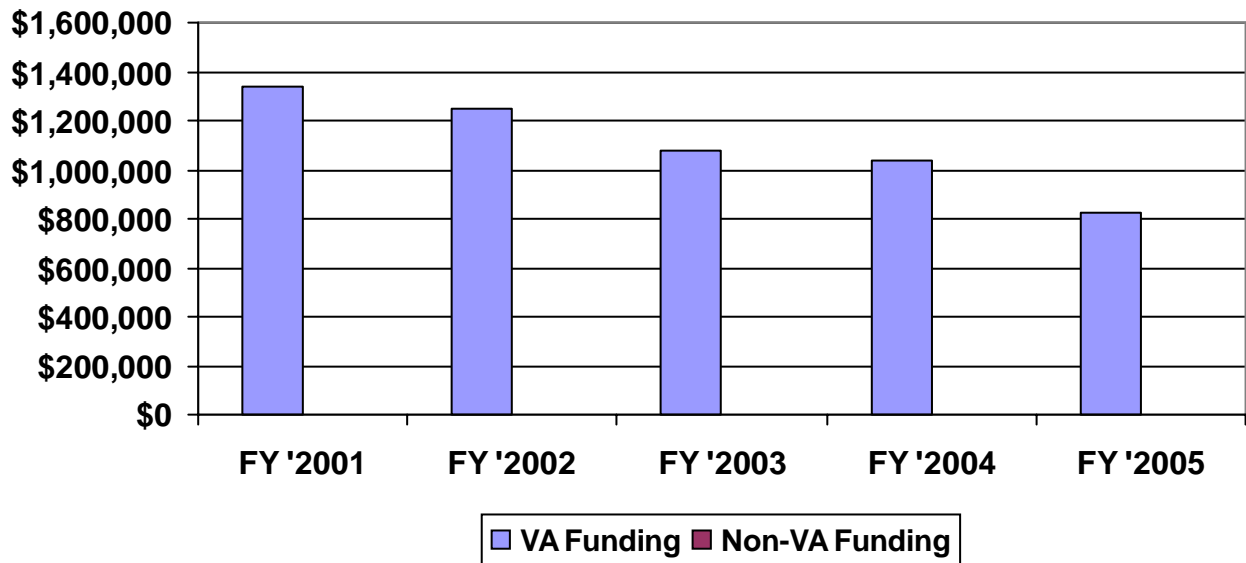
3.2 Funding Charts (Figures 1-4)



**Seattle Center of Excellence
External (Non-VA) Funding**



**Seattle Center of Excellence
Training Support History**



4.1 Research Projects and Programs (Table 3)

Funded Research Projects and Programs Seattle Center of Excellence

Agency ID	Project Title	VA Investigator - Role	Type / Source	Current FY Amount	Total Amount	Start Date	End Date	Status
HSR&D								
ECI 03-206	New Statistical Methods for Analyzing Veteran's Health Care Costs	X. A. Zhou PhD MSc - PI	HSR&D	\$106,976	\$340,340	1/2005	6/2007	Start Up Activities
IHI 02-062	Collaborative Cardiac Care Project (C3P)	S. D. Fihn MD MPH - PI V. S. Fan MD MPH - Co-INV M. S. Gerrity MD MPH PhD - Co-INV C. Liu MPH PhD - Co-INV	HSR&D	\$463,719	\$1,610,401	1/2004	12/2006	Data Collection
IIR 00-077	Effects of Outlier Identification Strategy on Facility Profiling	K. L. Sloan MD - PI	HSR&D	\$143,471	\$704,366	10/2002	9/2005	Final Report Preparation
IIR 00-078	Telemedicine Intervention to Improve Depression Care in Rural CBOCs - Seattle Site	M. L. Maciejewski PhD - Co-INV	HSR&D	\$10,599	\$53,200	7/2002	3/2006	Data Collection
IIR 01-151	Preventing Pressure Ulcers in Veterans with Spinal Cord Injury (SCI)	S. P. Burns MD - Co-INV	HSR&D	\$24,462	\$31,070	7/2003	9/2005	Terminated
IIR 01-160	Nurse Staffing and Patient Outcomes in VA	A. E. Sales PhD MSN RN - PI	HSR&D	\$291,560	\$994,196	10/2002	9/2005	Final Report Preparation
IIR 02-228	Assessing Practice Variation in Long Term Care Referrals	S. C. Hedrick PhD - PI M. Guihan PhD - Co-PI F. J. Mambourg RN MS MPA - Co-INV	HSR&D	\$196,557	\$550,898	4/2004	9/2006	Analysis
IIR 02-292	Improving the Quality of End-of-Life Communication for Patients with COPD	D. H. Au MD MS - PI V. S. Fan MD MPH - Co-INV	HSR&D	\$259,813	\$790,878	10/2003	12/2007	Data Collection
IIR 03-194	Methylphenidate for Depressed Cancer Patients in Hospice	L. K. Ganzini MD MPH - PI	HSR&D	\$154,900	\$811,200	1/2005	12/2008	Start Up Activities
IIR 03-200	VA Prescription Drug Company Copayments and Veterans with Diabetes or Hypertension	M. L. Maciejewski PhD - PI C. Liu MPH PhD - Co-INV	HSR&D	\$200,474	\$663,313	1/2004	6/2006	Data Collection
IIR 03-303	Improving Safety Culture and Outcomes in VA Hospitals	A. E. Sales PhD MSN RN - Co-INV	HSR&D	\$2,250	\$2,250	4/2005	6/2008	Start Up Activities

Funded Research Projects and Programs

Seattle Center of Excellence

Agency ID	Project Title	VA Investigator - Role	Type / Source	Current FY Amount	Total Amount	Start Date	End Date	Status
HSR&D								
IIR 99-377	Audiology Visits after Screening for Hearing Loss: An RCT	B. Yueh MD MPH - PI C. Liu MPH PhD - Co-INV	HSR&D	\$100,301	\$811,790	10/2001	6/2005	Final Report Preparation
MHI 20-020	Improving Outcomes of Depression in Primary Care	S. K. Dobscha MD - PI M. S. Gerrity MD MPH PhD - Co-PI D. H. Hickam MD MPH - Co-INV	HSR&D	\$47,654	\$596,000	1/2002	12/2004	Completed
MHI 99-375	Well-being Among Veterans Enhancement Study (WAVES)	E. F. Chaney PhD - PI C. Liu MPH PhD - Co-INV	HSR&D	\$45,095	\$189,770	10/2001	9/2005	Final Report Preparation
MHS 03-218	Creating HealtheVet Informatics Applications for Collaborative Care	E. F. Chaney PhD - PI	HSR&D	\$96,724	\$699,700	10/2004	9/2006	Data Collection
NRI 98-194	Promoting Activity and Exercise in Chronic Pulmonary Disease: An Intervention Study	B. G. Steele PhD RN - PI	HSR&D	\$39,703	\$502,033	10/2000	3/2005	Completed
PCC 01-178	Demonstration Project: A Method for Patient-Centered Improvements	B. D. Anawalt MD BS - Co-INV	HSR&D	\$2,000	\$2,000	10/2002	3/2005	Completed
PMI 03-195	Improving the Treatment of Chronic Pain in Primary Care	S. K. Dobscha MD - PI M. S. Gerrity MD MPH PhD - Co-PI	HSR&D	\$24,224	\$895,000	9/2005	11/2009	Start Up Activities
RCD 00-018	RCD	D. H. Au MD MS - Awardee	HSR&D	\$169,289	\$452,280	7/2001	6/2007	Career Award
RCD 00-028	RCD	S. Saha MD MPH - Awardee	HSR&D	\$169,225	\$464,519	1/2002	1/2008	Career Award
RCD 02-170	RCD	V. S. Fan MD MPH - Awardee	HSR&D	\$151,175	\$421,450	8/2003	7/2006	Career Award
RCD 03-177	RCD	C. L. Bryson MD MS - Awardee	HSR&D	\$134,396	\$365,286	7/2004	6/2007	Career Award
RCD 04-119	RCD	L. D. Chew MD MPH - Awardee	HSR&D	\$45,757	\$359,490	7/2004	12/2005	Career Award
RCD 04-129	ARCD	S. K. Dobscha MD - Awardee	HSR&D	\$48,830	\$585,960	7/2005	6/2008	Career Award
RCS 91-403	RCS	S. C. Hedrick PhD - Awardee	HSR&D	\$160,896	\$554,490	4/1991	9/2009	Career Award
RCS 98-353	RCS	G. E. Reiber MPH PhD - Awardee	HSR&D	\$146,558	\$419,235	1/1999	4/2009	Career Award

Funded Research Projects and Programs

Seattle Center of Excellence

Agency ID	Project Title	VA Investigator - Role	Type / Source	Current FY Amount	Total Amount	Start Date	End Date	Status
HSR&D								
SCT 01-169	Increasing Influenza and Pneumococcal Vaccinations in VA SCI&D Population	B. Goldstein MD PhD - Co-PI M. C. Hammond MD - Co-INV M. W. Legro PhD - Co-INV	HSR&D	\$0	\$185,210	4/2002	9/2005	Final Report Preparation
SDR 03-090	MI-Plus: Web-enhanced Guideline Implementation for Post MI CBOC Patients	A. E. Sales PhD MSN RN - Co-INV	HSR&D	\$11,486	\$11,486	9/2003	12/2008	Data Collection
SDR 03-289	Evaluating Quality of Care for Acute Coronary Syndromes in VHA	G. C. Larsen MD - PI S. D. Fihn MD MPH - Co-PI C. C. Maynard PhD MSW - Co-INV A. E. Sales PhD MSN RN - Co-INV X. A. Zhou PhD MSc - Co-INV	HSR&D	\$330,120	\$1,223,262	10/2004	9/2007	Data Collection
TMI 95-505	Medical Informatics Postdoctoral Training Program (Seattle)	K. W. Hammond MD - Director	HSR&D	\$14,000	\$14,000	7/1995	9/2007	Supplemental Funding
TMI 95-648	Medical Informatics Training Program (Portland)	D. H. Hickam MD MPH - Director	HSR&D	\$14,000	\$14,000	7/1995	9/2007	Supplemental Funding
TPM 97-010	Health Services Research and Development MD Postdoctoral Training Program (Seattle)	K. A. Bradley MD MPH - Director S. D. Fihn MD MPH - Co-Director	HSR&D	\$28,000	\$28,000	10/1996	9/2007	Supplemental Funding
TPP 97-008	Health Services Research and Development PhD Postdoctoral Training Program (Seattle/Portland)	G. E. Reiber MPH PhD - Director	HSR&D	\$21,000	\$21,000	10/1993	9/2006	Supplemental Funding
USA 02-074	Undersecretary's Award - Steve Fihn, MD	S. D. Fihn MD MPH - Awardee	HSR&D	\$25,000	\$150,000	4/2002	3/2005	Career Award
Medical Care								
CRI 03-153	Determining the Prevalence of Health Literacy Among Veterans	S. Saha MD MPH - Co-INV	Medical Care	\$43,819	\$88,858	1/2004	12/2006	Analysis
CRS 02-164	Colorectal Cancer Care Outcomes Research and Quality Surveillance Data System	D. H. Au MD MS - Co-INV C. D. Blanke MD - Co-INV	Medical Care	\$43,000	\$45,838	7/2003	6/2008	Data Collection

Funded Research Projects and Programs
Seattle Center of Excellence

Agency ID	Project Title	VA Investigator - Role	Type / Source	Current FY Amount	Total Amount	Start Date	End Date	Status
Medical Care								
CRT 02-059	Translation of Colorectal Cancer Screening Guidelines: A System Intervention	L. L. Humphrey MD MPH - PI	Medical Care	\$59,684	\$550,000	7/2003	9/2006	Data Collection
ESP 05-225	Evidence Synthesis Activity Pilot Program - Paper 1	M. Helfand MD MPH MS - PI	Medical Care	\$15,000	\$15,000	7/2005	6/2006	Start Up Activities
IHD 04-346	Supplemental QLP IHD	S. D. Fihn MD MPH - QUERI Research Coordinator A. E. Sales PhD MSN RN - PI	Medical Care	\$62,689	\$71,000	6/2004	5/2009	Supplemental Funding
IHD 98-001	QUERI on Ischemic Heart Disease	S. D. Fihn MD MPH - QUERI Research Coordinator C. C. Maynard PhD MSW - Co-INV A. E. Sales PhD MSN RN - Co-INV	Medical Care	\$298,000	\$995,489	6/1998	9/2006	QUERI Center
IMA 04-160	Collaboration between VA and Academic Experts in Implementation Research	S. D. Fihn MD MPH - Co-INV M. C. Hammond MD - Co-INV	Medical Care	\$23,667	\$200,000	6/2004	5/2006	Data Collection
MNT 02-209	Value and Cost of Translating Collaborative Care Models for Depression	E. F. Chaney PhD - Co-INV C. Liu MPH PhD - Co-INV	Medical Care	\$48,318	\$162,393	4/2003	3/2005	Completed
MNT 03-215	Expanding and Testing VA Collaborative Care Models for Depression	E. F. Chaney PhD - Co-INV C. Liu MPH PhD - Co-INV	Medical Care	\$157,934	\$365,171	7/2004	9/2007	Data Collection
MRC 03-067	VA Nursing Outcomes Database Project	A. E. Sales PhD MSN RN - PI	Medical Care	\$395,376	\$1,170,561	2/2003	9/2006	Data Collection
MRC 03-334	Cardiac Care Followup Clinical Study	S. D. Fihn MD MPH - PI A. E. Sales PhD MSN RN - Co-PI	Medical Care	\$236,000	\$509,295	10/2003	9/2005	Analysis
MRR 00-016	Assisted Living Pilot Evaluation	S. C. Hedrick PhD - PI M. K. Chapko PhD - Co-INV J. H. Sullivan BA - Co-INV	Medical Care	\$101,961	\$917,336	4/2001	3/2005	Completed
SCI 03-264	Supplemental QLP Spinal Cord Injury	B. Goldstein MD PhD - QUERI Clinical Coordinator	Medical Care	\$48,000	\$48,000	7/2003	9/2008	Supplemental Funding
SCI 98-001	QUERI on Spinal Cord Injury	M. C. Hammond MD - QUERI Clinical Coordinator	Medical Care	\$140,300	\$265,442	6/1998	7/2006	QUERI Center
SUB 03-265	Supplemental QLP Substance Abuse	D. R. Kivlahan PhD - QUERI Clinical Coordinator	Medical Care	\$49,493	\$49,493	6/2003	9/2008	Supplemental Funding

Funded Research Projects and Programs
Seattle Center of Excellence

Agency ID	Project Title	VA Investigator - Role	Type / Source	Current FY Amount	Total Amount	Start Date	End Date	Status
Medical Care								
SUB 98-000	QUERI on Substance Abuse	D. R. Kivlahan PhD - QUERI Clinical Coordinator	Medical Care	\$50,000	\$72,275	6/1998	7/2006	QUERI Center
Other VA								
RR&D	Orthostatic Hypotension in Rehabilitation Patients	D. H. Hickam MD MPH - Co-INV	VA Rehabilitation R&D Service	\$75,000	\$550,000	4/2005	3/2008	Start Up Activities
RR&D 010	Radiotherapy-induced Dysphagia	B. Yueh MD MPH - PI	RR&D	\$50,800	\$50,800	5/2005	6/2006	Data Collection
XNV 61-074	Comorbidities, Patient Characteristics, and Outcomes of Prostate Carcinoma	D. H. Hickam MD MPH - PI J. Shannon PhD MPH - Co-INV	Medical Research	\$136,700	\$445,400	10/2002	9/2005	Analysis
XVA 61-023	Development of a Cardiac Assessment and Tracking System (CART)	S. D. Fihn MD MPH - PI	Patient Care Services	\$613,603	\$1,960,872	1/2003	9/2008	Data Collection
XVA 61-025	Hepatitis C Incidence in the Department of Veterans Affairs	M. K. Chapko PhD - PI	ERIC/HCRC	\$34,000	\$34,000	10/2004	9/2005	Analysis
XVA 61-026	Heritability of Colorectal Polyps Feasibility Study	J. A. Dominitz MD MHS - PI	ERIC	\$25,000	\$25,000	1/2005	12/2005	Data Collection
XVA 61-027	The Impact of Neighborhood Environment on Health Status and Survival Among Veterans	K. M. Nelson MD MSHS - PI S. D. Fihn MD MPH - Co-PI	ERIC	\$24,940	\$24,940	1/2005	12/2005	Analysis
XVA 61-028	Prevalence of Disorders of Extreme Stress (Des) Among Male and Female Veterans in Outpatient Mental Health Care: Implications for Health Care Costs	C. Liu MPH PhD - Co-INV	ERIC	\$615	\$24,512	10/2003	9/2005	Analysis
XVA 61-029	Validation of the Department of Veterans Affairs Central Cancer Registry for Colorectal Cancer	J. A. Dominitz MD MHS - Co-INV	ERIC	\$25,000	\$25,000	1/2005	12/2005	Analysis
Federal Non-VA								
03-BHPR-104	The Rationale for Diversity in the Health Professions	S. Saha MD MPH - PI	HRSA	\$20,000	\$24,192	10/2003	12/2005	Final Report Preparation

Funded Research Projects and Programs
Seattle Center of Excellence

Agency ID	Project Title	VA Investigator - Role	Type / Source	Current FY Amount	Total Amount	Start Date	End Date	Status
Federal Non-VA								
1 P20 HS11550	Oregon Patient Safety Evaluation Center	D. H. Hickam MD MPH - PI	AHRQ	\$103,129	\$396,657	10/2001	9/2005	Data Collection
1 R01 EB005829-01A2	Statistical Methods in Diagnostic Medicine	X. A. Zhou PhD MSc - PI	National Institute of Biomedical Imaging and Bioengineering	\$36,000	\$787,752	7/2005	6/2008	Start Up Activities
1 R01 HL62567-01A3	Causal Analysis of Encouragement Design Studies	X. A. Zhou PhD MSc - PI	NHLBI	\$174,105	\$525,000	9/2002	9/2006	Analysis
1K22CA94973-01A1	Diet and Prostate Cancer Risk	J. Shannon PhD MPH - PI	NCI	\$162,745	\$488,352	8/2003	7/2006	Data Collection
1K23 AA00313	Effectiveness of Primary Care Alcohol Interventions	K. A. Bradley MD MPH - PI	NIAA	\$0	\$589,322	4/2000	4/2006	Manuscripts
1R21 NR008764-01	Shared Decision-Making in End-Stage Heart and Lung Disease	D. H. Au MD MS - Co-INV	National Institute of Nursing Research	\$24,000	\$48,000	9/2004	6/2006	Start Up Activities
1R43 S000589-01	Disparities, Culture and Health: an e-Learning Course	S. Saha MD MPH - Consultant	NCMHHD	\$107,660	\$107,660	9/2004	3/2005	Completed
1R01CA89544	Colorectal Cancer Care Variation in Vulnerable Elderly	J. A. Dominitz MD MHS - Co-INV	NCI	\$0	\$1,066,640	10/2000	9/2005	Analysis
2 U01 AG16976-06	National Alzheimer Disease Coordinating Center (NACC)	X. A. Zhou PhD MSc - Co-INV	NIH	\$22,000	\$2,557,140	10/2004	9/2008	Start Up Activities
290-02-0024: EPC-2	Evidence-based Practice Centers	M. Helfand MD MPH MS - PI	AHRQ	\$0	\$0	6/2002	6/2007	Data Collection
290-97	Resource Center for Full Operations Medicare Modernization Act Research	M. Helfand MD MPH MS - PI D. H. Hickam MD MPH - Co-INV	AHRQ	\$360,000	\$3,000,000	6/2005	6/2007	Start Up Activities
5U10AA11799	Pharmacological and Behavioral Treatment with Alcoholics (Project COMBINE)	D. R. Kivlahan PhD - Co-INV	National Institute on Alcohol Abuse and Alcoholism	\$189,475	\$1,832,000	9/1997	9/2006	Data Collection
CRS 02-162	Colorectal Cancer Screening Assessment and Surveillance Data System	J. Shannon PhD MPH - Co-INV	NCI	\$24,920	\$892,000	10/2002	7/2005	Completed

Funded Research Projects and Programs
Seattle Center of Excellence

Agency ID	Project Title	VA Investigator - Role	Type / Source	Current FY Amount	Total Amount	Start Date	End Date	Status
Federal Non-VA								
CRS 02-164	Share Thoughts on Care: A Population-Based Study of Care and Outcomes in Lung and Colorectal Care Patients (CanCORS)	D. H. Au MD MS - Site PI	National Cancer Institute/DVA	\$40,000	\$60,000	12/2004	7/2006	Data Collection
HHS29020-050013C	John M. Eisenberg Clinical Decisions and Communications Science Center	D. H. Hickam MD MPH - PI M. S. Gerrity MD MPH PhD - Co-INV S. Saha MD MPH - Co-INV	AHRQ	\$30,000	\$4,586,622	9/2005	9/2007	Start Up Activities
K12HD049100-01	UW Multidisciplinary Clinical Research Training	B. Yueh MD MPH - Co-INV	NIH	\$11,040	\$2,242,973	9/2004	7/2009	Data Collection
P01 HD34565	Neurobiology and Genetics of Autism	X. A. Zhou PhD MSc - Co-INV	NIH	\$5,000	\$1,373,882	10/2004	9/2009	Start Up Activities
R01 CA095419	Oral Cancer: Molecular Profiles and Clinical Outcomes	B. Yueh MD MPH - Co-INV	National Cancer Institute	\$500,000	\$2,549,521	6/2003	5/2008	Data Collection
R01 HS013105-01A1	Regression Analysis of Health Care Costs	X. A. Zhou PhD MSc - PI	AHRQ	\$124,831	\$388,814	9/2002	9/2006	Analysis
R01AA12788	Cost-effectiveness of Alcoholism Treatment	D. R. Kivlahan PhD - Co-PI	National Institute on Alcohol Abuse and Alcoholism	\$13,717	\$125,182	8/2000	7/2007	Data Collection
U01DK57131	Study of Health Outcomes of Weight-Loss (SHOW-Look Ahead)	M. L. Maciejewski PhD - Co-INV	NIDDK	\$4,200	\$9,080,963	9/2003	8/2006	Analysis
U10DA13714	Clinical Trials Network: Pacific Northwest Node	D. R. Kivlahan PhD - Co-INV	National Institute on Drug Abuse	\$1,044,360	\$11,000,000	1/2001	12/2005	Analysis
XNV 61-029	An ICU Intervention to Improve End-of-Life Care	D. H. Au MD MS - Co-INV	National Institute of Nursing Research	\$0	\$0	10/2003	9/2008	Data Collection
XNV 61-076	Telemedicine Planning, Research, Evidence Report and Organization	D. H. Hickam MD MPH - Co-INV	AHRQ	\$152,250	\$203,000	10/2003	9/2005	Analysis
XNV 61-087	Clinical Research Consortium to Improve Resuscitation Outcomes (Clinical Center)	C. C. Maynard PhD MSW - Consultant	NHLBI	\$11,181	\$11,181	9/2004	8/2009	Data Collection

Funded Research Projects and Programs
Seattle Center of Excellence

Agency ID	Project Title	VA Investigator - Role	Type / Source	Current FY Amount	Total Amount	Start Date	End Date	Status
Non-Federal								
2000 G EM 158	Cost-Effectiveness Study and Dissemination of Project IMPACT	X. A. Zhou PhD MSc - Co-INV	University of California, Los Angeles	\$1,300	\$800,000	12/2003	3/2009	Data Collection
XNV 61-021	Risk Factors for Inflammatory Bowel Disease Exacerbation	J. A. Dominitz MD MHS - PI	Glaxo Wellcome	\$0	\$90,000	7/2000	6/2005	Completed
XNV 61-025	At-risk Drinking Veterans Intervention: Computerized Reminder Effectiveness (ADVICE) Trial	K. A. Bradley MD MPH - PI	RWJ	\$0	\$239,725	7/2000	12/2004	Completed
XNV 61-056	Clinical Outcomes Assessment Program	C. C. Maynard PhD MSW - PI	Foundation for Health Care Quality	\$27,955	\$91,855	1/2000	12/2006	Data Collection
XNV 61-057	National Resident Work Hours Survey	F. C. Wiest MD - PI	RWJ	\$0	\$0	12/2001	12/2005	Completed
XNV 61-068	Understanding Physician Cultural Competence and the Impact of Race/Ethnicity on Patients' Perceptions of Physicians	S. Saha MD MPH - PI	RWJ	\$111,355	\$299,972	7/2003	6/2007	Data Collection
XNV 61-075	Medic I Foundation	C. C. Maynard PhD MSW - Consultant	Seattle Medical Foundation	\$11,181	\$21,181	1/2004	12/2006	Data Collection
XNV 61-078	Chronic Obstructive Pulmonary Disease and Hazardous Drinking: Health Behaviors and Resource Utilization	D. H. Au MD MS - PI	Firland Foundation	\$17,000	\$17,000	7/2004	6/2006	Data Collection
XNV 61-079	Family Members' Views on and Experiences with Loved Ones Who Choose Physician-assisted Suicide	L. K. Ganzini MD MPH - PI S. K. Dobscha MD - Co-INV	Greenwall Foundation	\$43,746	\$87,992	1/2004	12/2005	Data Collection
XNV 61-080	The Roles of Attachment, Control, Spirituality and Hopelessness in Decisions for Physician-Assisted Suicide	L. K. Ganzini MD MPH - PI S. K. Dobscha MD - Co-INV	NW Health Foundation	\$40,278	\$79,556	1/2004	12/2005	Data Collection
XNV 61-081	Morbidity and Mortality Among Dialysis Patients after Treatment for Depression	L. K. Ganzini MD MPH - Co-INV	Medical Research Foundation	\$30,000	\$30,000	4/2005	3/2006	Start Up Activities

Funded Research Projects and Programs

Seattle Center of Excellence

Agency ID	Project Title	VA Investigator - Role	Type / Source	Current FY Amount	Total Amount	Start Date	End Date	Status
Non-Federal								
XNV 61-084	Alcohol and Adverse Drug Reactions in a VA Population	K. A. Bradley MD MPH - PI D. R. Kivlahan PhD - Co-INV	Alcohol and Drug Abuse Institute	\$19,919	\$19,919	10/2004	6/2006	Data Collection
XNV 61-085	Feet First: Promoting Physician Activity with People with Diabetes Mellitus and Insensate Feet	G. E. Reiber MPH PhD - Consultant	RWJ Generalist Physician Faculty Scholars Award	\$8,600	\$456,166	1/2005	12/2009	Start Up Activities
XNV 61-086	Drug Effectiveness Review Project	M. Helfand MD MPH MS - Co-INV	State of Oregon Department of Human Services	\$0	\$0	10/2003	6/2006	Data Collection
XNV 61-088	Health Behavior Feedback for Veterans with Hepatitis C	D. R. Kivlahan PhD - Co-INV	Alcohol Beverage Medical Research Foundation	\$42,400	\$84,000	1/2004	12/2005	Analysis
XNV 61-089	Patient Distress and Satisfaction as Predictors of Treatment Engagement: A Pilot Study	D. R. Kivlahan PhD - Co-INV	University of Washington Alcohol and Drug Abuse Institute	\$6,000	\$6,000	1/2005	12/2005	Data Collection
Training Programs								
RWJ 61-000	Robert Wood Johnson Clinical Scholars Program (Seattle)	R. A. Deyo MD MPH - Director T. D. Koepsell MD MPH - Co-Director	OAA	\$237,970	\$3,036,893	7/1978	6/2006	Training Program
TMI 65-648	Medical Informatics Training Program (Portland)	D. H. Hickam MD MPH - Director	OAA	\$110,000	\$575,900	7/1996	6/2006	Training Program
TMI 95-505	VHA Medical Informatics Training Program (Seattle)	K. W. Hammond MD - Director	OAA	\$50,409	\$953,084	7/1995	9/2006	Training Program
TPA 61-000	Ambulatory Care MD Postdoctoral Training Program (Seattle)	K. A. Bradley MD MPH - Director S. D. Fihn MD MPH - Co-Director	OAA	\$121,380	\$3,300,291	7/1989	6/2006	Training Program
TPA 61-500	Ambulatory Care MD Postdoctoral Training Program (Portland)	D. H. Hickam MD MPH - Director	OAA	\$87,750	\$2,163,847	7/1990	6/2006	Training Program
TPM 97-010	HSR&D MD Postdoctoral Training Program	K. A. Bradley MD MPH - Director S. D. Fihn MD MPH - Co-Director	OAA	\$72,781	\$2,423,073	7/1991	6/2006	Training Program

Funded Research Projects and Programs

Seattle Center of Excellence

Agency ID	Project Title	VA Investigator - Role	Type / Source	Current FY Amount	Total Amount	Start Date	End Date	Status
Training Programs								
TPP 97-008	Health Services Research and Development PhD Postdoctoral Training Program (Seattle/Portland)	G. E. Reiber MPH PhD - Director	OAA	\$128,576	\$903,776	10/1993	9/2006	Training Program
TWH 61-500	Health Issues of Women Veterans Training Program (Portland)	D. H. Hickam MD MPH - Director	OAA	\$14,625	\$791,625	7/1998	6/2006	Training Program

5.1 Bibliography

Journal Articles

-
1. Allen E, Nicolaidis C, Helfand M. The evaluation of rectal bleeding in adults. A cost-effectiveness analysis comparing four diagnostic strategies. *Journal of General Internal Medicine* 2005; 20: 81-90.
Project: 290-97-0018: Task Order 2, Technical Support of the U. S. Preventive Services Task Force
PI: Mark Helfand, MD, MPH, MS

 2. Allen E, Zerzan J, Choo C, Shenson D, Saha S. Teaching systems-based practice to residents by using independent study projects. *Academic Medicine* 2005; 80: 125-128.
Project: RCD 00-028, RCD
Career Awardee: Somnath Saha, MD, MPH
Project: RWJ 61-034, Robert Wood Johnson Clinical Scholars Program (J. Zerzan)
Trainee: Judy T. Zerzan, MD, MPH

 3. Arterburn DE, Maciejewski ML, Tsevat J. Impact of morbid obesity on medical expenditures in adults. *International Journal of Obesity* 2005; 29: 334-339.
Project: TPA 61-024, Ambulatory Care Postdoctoral Fellowship
Trainee: David E. Arterburn, MD, MPH
Project: U01DK57131, Study of Health Outcomes of Weight-Loss (SHOW-Look Ahead)
PI: Matthew L. Maciejewski, PhD

 4. Arterburn DE, McDonnell MB, Hedrick SC, Diehr P, Fihn SD. Association of body weight with condition-specific quality of life in male veterans. *American Journal of Medicine* 2004; 117: 738-746.
Project: IIR 99-376, Population Based Assessments of Health and Satisfaction Using ACQUIP
PI: Stephan D. Fihn, MD, MPH
Project: RCS 91-403, RCS
Career Awardee: Susan C. Hedrick, PhD
Project: SDR 96-002, Ambulatory Care Quality Improvement (ACQUIP)
PI: Stephan D. Fihn, MD, MPH
Project: TPA 61-024, Ambulatory Care Postdoctoral Fellowship
Trainee: David E. Arterburn, MD, MPH

 5. Atherly A, Hebert PL, Maciejewski ML. An analysis of disenrollment from Medicare managed care plans by Medicare beneficiaries with diabetes. *Medical Care* 2005; 43: 500-506.
Project: 1 R01 HS10230-01A2, Selection Bias by Medicare Beneficiaries with Diabetes
PI: Matthew L. Maciejewski, PhD

-
6. Au DH, Bryson CL, Fan VS, Udris EM, Curtis JR, McDonell MB, Fihn SD. Beta-blockers as single-agent therapy for hypertension and the risk of mortality among patients with chronic obstructive pulmonary disease. *American Journal of Medicine* 2004; 117: 925-931.
- Project:** IIR 99-376, Population Based Assessments of Health and Satisfaction Using ACQUIP **PI:** Stephan D. Fihn, MD, MPH
- Project:** RCD 00-018, RCD **Career Awardee:** David H. Au, MD, MS
- Project:** RCD 03-177, RCD **Career Awardee:** Christopher L. Bryson, MD, MS
- Project:** SDR 96-002, Ambulatory Care Quality Improvement (ACQUIP) **PI:** Stephan D. Fihn, MD, MPH
-
7. Au DH, Udris EM, Curtis JR, McDonell MB, Fihn SD. Association between chronic heart failure and inhaled beta-2-adrenoceptor agonists. *American Heart Journal* 2004; 148: 915-920.
- Project:** IIR 99-376, Population Based Assessments of Health and Satisfaction Using ACQUIP **PI:** Stephan D. Fihn, MD, MPH
- Project:** RCD 00-018, RCD **Career Awardee:** David H. Au, MD, MS
- Project:** SDR 96-002, Ambulatory Care Quality Improvement (ACQUIP) **PI:** Stephan D. Fihn, MD, MPH
-
8. Back AL, Li YF, Sales AE. Impact of palliative care case management on resource use by patients dying of cancer at a Veterans Affairs medical center. *Journal of Palliative Medicine* 2005; 8: 26-35.
- Project:** IIR 01-160, Nurse Staffing and Patient Outcomes in VA **PI:** Anne E. Sales, PhD, MSN, RN
-
9. Baldwin LM, Dobie SA, Billingsley K, Cai Y, Wright GE, Dominitz JA, Barlow W, Warren JL, Taplin SH. Explaining black-white differences in receipt of recommended colon cancer treatment. *Journal of The National Cancer Institute* 2005; 97: 1211-1220.
- Project:** 1RO1CA89544, Colorectal Cancer Care Variation in Vulnerable Elderly **PI:** Jason A. Dominitz, MD, MHS
-
10. Belza B, Steele BG, Cain K, Coppersmith J, Howard J, Lakshminarayan S. Seattle Obstructive Lung Disease Questionnaire: sensitivity to outcomes in pulmonary rehabilitation in severe pulmonary illness. *Journal of Cardiopulmonary Rehabilitation* 2005; 25: 107-114.
- Project:** NRI 98-194, Promoting Activity and Exercise in Chronic Pulmonary Disease: An Intervention Study **PI:** Bonnie G. Steele, PhD, RN

-
11. Billgren T, Maynard C, Christian TF, Rahman MA, Saeed M, Hammill SC, Wagner GS, Birnbaum Y. Grade 3 ischemia on the admission electrocardiogram predicts rapid progression of necrosis over time and less myocardial salvage by primary angioplasty. *Journal of Electrocardiology* 2005; 38: 187-194.
Project: XNV 61-055, Cardiovascular Data Analysis **PI:** Charles C. Maynard, PhD, MSW
-
12. Boyko EJ, Fihn SD, Scholes D, Abraham L, Monsey B. Risk of urinary tract infection and asymptomatic bacteriuria among diabetic and nondiabetic postmenopausal women. *American Journal of Epidemiology* 2005; 161: 557-564.
Project: 2 R01 DK431341-11, Risk Factors for Urinary Tract Infections in Postmenopausal Women **PI:** Stephan D. Fihn, MD, MPH
-
13. Bryson CL, Smith NL, Kuller LH, Chaves PH, Manolio TA, Lewis W, Boyko EJ, Furberg CD, Psaty BM. Risk of congestive heart failure in an elderly population treated with peripheral alpha-1 antagonists. *Journal Of The American Geriatrics Society* 2004; 52: 1648-1654.
Project: RCD 03-177, RCD **Career Awardee:** Christopher L. Bryson, MD, MS
-
14. Calsyn DA, Saxon AJ, Bush KR, Howell DN, Baer JS, Sloan KL, Malte CA, Kivlahan DR. The Addiction Severity Index medical and psychiatric composite scores measure similar domains as the SF-36 in substance-dependent veterans: concurrent and discriminant validity. *Drug and Alcohol Dependence* 2004; 76: 165-171.
Project: SUI 99-109, Onsite versus Referral Models of Primary Care for Substance Abusing Patients **PI:** Andrew J. Saxon, MD
-
15. Chapko MK, Sloan KL, Davison JW, Dufour DR, Bankson DD, Rigsby M, Dominitz JA. Cost effectiveness of testing strategies for chronic hepatitis C. *American Journal of Gastroenterology* 2005; 100: 607-615.
Project: CSP 488, Epidemiology of Hepatitis C Virus Infection in Veterans **PI:** Jason A. Dominitz, MD, MHS
-
16. Chew LD, Nelson KM, Young BA, Bradley KA. Association between alcohol consumption and diabetes preventive practices. *Family Medicine* 2005; 37: 589-594.
Project: 1K23 AA00313, Effectiveness of Primary Care Alcohol Interventions **PI:** Katharine A. Bradley, MD, MPH
Project: TPA 61-027, Ambulatory Care Postdoctoral Fellowship **Trainee:** Lisa D. Chew, MD, MPH

-
17. Chou R, Helfand M. Challenges in systematic reviews that assess treatment harms. *Annals of Internal Medicine* 2005; 142: 1090-1099.
Project: 290-97-0018: Task Order 2, Technical Support of the U. S. Preventive Services Task Force
PI: Mark Helfand, MD, MPH, MS
-
18. Cisler RA, Kivlahan DR, Donovan D, Mattson ME. Assessing nondrinking outcomes in combined pharmacotherapy and psychotherapy clinical trials for the treatment of alcohol dependence. *Journal of Studies On Alcohol. Supplement* 2005; 110-118.
Project: SUB 98-000, QUERI on Substance Abuse
PI: John W. Finney, PhD
-
19. Corson K, Gerrity MS, Dobscha SK. Screening for depression and suicidality in a VA primary care setting: 2 items are better than 1 item. *American Journal of Managed Care* 2004; 10: 839-845.
Project: MHI 20-020, Improving Outcomes of Depression in Primary Care
PI: Steven K. Dobscha, MD
Project: RCD 04-129, ARCD
Career Awardee: Steven K. Dobscha, MD
-
20. Couper DJ, Hosking JD, Cisler RA, Gastfriend DR, Kivlahan DR. Factorial designs in clinical trials: options for combination treatment studies. *Journal of Studies On Alcohol. Supplement* 2005; 24-32.
Project: SUB 98-000, QUERI on Substance Abuse
PI: John W. Finney, PhD
-
21. Curtis MP, Sales AE, Sullivan JH, Gray SL, Hedrick SC. Satisfaction with care among community residential care residents. *Journal of Aging and Health* 2005; 17: 3-27.
Project: 96314-G, Community Residential Care In Washington State, Predictors of Health Status, Service Use and Costs
PI: Susan C. Hedrick, PhD
Project: RCS 91-403, RCS
Career Awardee: Susan C. Hedrick, PhD
-
22. Davis GE, Schwartz SR, Veenstra DL, Yueh B. Cost comparison of surgery vs organ preservation for laryngeal cancer. *Archives of Otolaryngology -- Head & Neck Surgery* 2005; 131: 21-26.
Project: RCD 98-318, RCD
Career Awardee: Bevan Yueh, MD, MPH
-
23. Davis GE, Yueh B, Walker E, Katon W, Koepsell TD, Weymuller EA. Psychiatric distress amplifies symptoms after surgery for chronic rhinosinusitis. *Archives of Otolaryngology -- Head & Neck Surgery* 2005; 132: 189-196.
Project: RCD 98-318, RCD
Career Awardee: Bevan Yueh, MD, MPH

24. Desalvo KB, Fan VS, McDonell MB, Fihn SD. Predicting mortality and healthcare utilization with a single question. Health Services Research 2005; 40: 1234-1246.

Project: IIR 99-376, Population Based Assessments of Health and Satisfaction Using ACQUIP

PI: Stephan D. Fihn, MD, MPH

Project: RCD 02-170, RCD

Career Awardee: Vincent S. Fan, MD, MPH

Project: SDR 96-002, Ambulatory Care Quality Improvement (ACQUIP)

PI: Stephan D. Fihn, MD, MPH

25. Dobscha SK, Corson K, Solodky J, Gerrity MS. Use of videoconferencing for depression research: enrollment, retention, and patient satisfaction. Telemedicine Journal and E-Health 2005; 11: 84-89.

Project: MHI 20-020, Improving Outcomes of Depression in Primary Care

PI: Steven K. Dobscha, MD

Project: RCD 04-129, ARCD

Career Awardee: Steven K. Dobscha, MD

26. Dominitz JA, Boyko EJ, Koepsell TD, Heagerty PJ, Maynard C, Sporleder JL, Stenhouse A, Kling MA, Hrushesky W, Zeilman C, Sontag S, Shah N, Ona F, Anand B, Subik M, Imperiale TF, Nakhle S, Ho SB, Bini EJ, Lockhart B, Ahmad J, Sasaki A, van der LB, Toro D, Martinez-Souss J, Huilgol V, Eisen S, Young KA. Elevated prevalence of hepatitis C infection in users of United States veterans medical centers. Hepatology 2005; 41: 88-96.

Project: CSP 488, Epidemiology of Hepatitis C Virus Infection in Veterans

PI: Jason A. Dominitz, MD, MHS

27. Epler AJ, Kivlahan DR, Bush KR, Dobie DJ, Bradley KA. A brief readiness to change drinking algorithm: concurrent validity in female VA primary care patients. Addictive Behaviors 2005; 30: 389-395.

Project: 1K23 AA00313, Effectiveness of Primary Care Alcohol Interventions

PI: Katharine A. Bradley, MD, MPH

28. Fan VS, Burman M, McDonell MB, Fihn SD. Continuity of care and other determinants of patient satisfaction with primary care. Journal of General Internal Medicine 2005; 20: 226-233.

Project: IIR 99-376, Population Based Assessments of Health and Satisfaction Using ACQUIP

PI: Stephan D. Fihn, MD, MPH

Project: RCD 02-170, RCD

Career Awardee: Vincent S. Fan, MD, MPH

Project: SDR 96-002, Ambulatory Care Quality Improvement (ACQUIP)

PI: Stephan D. Fihn, MD, MPH

-
29. Fan VS, Reiber GE, Diehr P, Burman M, McDonell MB, Fihn SD. Functional status and patient satisfaction: a comparison of ischemic heart disease, obstructive lung disease, and diabetes mellitus. *Journal of General Internal Medicine* 2005; 20: 452-459.

Project: IIR 99-376, Population Based Assessments of Health and Satisfaction Using ACQUIP

PI: Stephan D. Fihn, MD, MPH

Project: RCD 02-170, RCD

Career Awardee: Vincent S. Fan, MD, MPH

Project: RCS 98-353, RCS

Career Awardee: Gayle E. Reiber, MPH, PhD

Project: SDR 96-002, Ambulatory Care Quality Improvement (ACQUIP)

PI: Stephan D. Fihn, MD, MPH

-
30. Feldman CL, Milstein SZ, Neubecker D, Underhill BK, Moyer E, Glumm S, Womble M, Auer J, Maynard C, Serra RK, Wagner GS. Comparison of the five-electrode-derived EASI electrocardiogram to the Mason Likar electrocardiogram in the prehospital setting. *American Journal of Cardiology* 2005; 96: 453-456.

Project: XNV 61-055, Cardiovascular Data Analysis

PI: Charles C. Maynard, PhD, MSW

-
31. Forastiere AA, Ang K, Brizel D, Brockstein BE, Dunphy F, Eisele DW, Goepfert H, Hicks WL, Kies MS, Lydiatt WM, Maghami E, McCaffrey T, Mittal BB, Pfister DG, Pinto HA, Posner MR, Ridge JA, Samant S, Schuller DE, Shah JP, Spencer S, Trotti A, Wheeler RH, Wolf GT, Worden F, Yueh B. Head and neck cancers. *Journal of the National Comprehensive Cancer Network* 2005; 3: 316-391.

Project: RCD 98-318, RCD

Career Awardee: Bevan Yueh, MD, MPH

-
32. Fortney JC, Maciejewski ML, Warren JJ, Burgess JF. Does improving geographic access to VA primary care services impact patients' patterns of utilization and costs?. *Inquiry : A Journal of Medical Care Organization, Provision and Financing* 2005; 42: 29-42.

Project: 1 R01 HS10230-01A2, Selection Bias by Medicare Beneficiaries with Diabetes

PI: Matthew L. Maciejewski, PhD

-
33. Ganzini L, Dobscha SK. Clarifying distinctions between contemplating and completing physician-assisted suicide. *Journal of Clinical Ethics* 2004; 15: 119-122.

Project: RCD 04-129, ARCD

Career Awardee: Steven K. Dobscha, MD

Project: XNV 61-079, Family Members' Views on and Experiences with Loved Ones Who Choose Physician-assisted Suicide

PI: Linda K. Ganzini, MD, MPH

Project: XNV 61-080, The Roles of Attachment, Control, Spirituality and Hopelessness in Decisions for Physician-Assisted Suicide

PI: Linda K. Ganzini, MD, MPH

-
34. Ganzini L, Volicer L, Nelson WA, Fox E, Derse AR. Ten myths about decision-making capacity. *Journal of The American Medical Directors Association* 2005; 6: S100-S104.
Center: HFP 83-027 **Core Investigator:** Linda K. Ganzini, M.D., M.P.H.
-
35. Gardella C, Johnson KM, Dobie DJ, Bradley KA. Prevalence of hysterectomy and associated factors in women Veterans Affairs patients. *The Journal of Reproductive Medicine* 2005; 50: 166-172.
Project: 1K23 AA00313, Effectiveness of Primary Care Alcohol Interventions **PI:** Katharine A. Bradley, MD, MPH
-
36. Gerrity MS, Tierney W. Online Early and Other Changes in JGIM. *Journal of General Internal Medicine* 2005; 20: 95.
Project: R13 HS12085-01, Evidence Based Medicine for the Practicing Clinician **PI:** Martha S. Gerrity, MD, MPH, PhD
-
37. Helfand M. Incorporating information about cost-effectiveness into evidence-based decision-making: the evidence-based practice center (EPC) model. *Medical Care* 2005; 43: 33-43.
Project: 290-97-0018: Task Order 7, Preventing Violence and Other Health-risking Social Behavior in Adolescents - EPC Oversight **PI:** Mark Helfand, MD, MPH, MS
-
38. Helfand M. A look back...and ahead. *Medical Decision Making* 2005; 25: 8-10.
Project: 290-02-0024: EPC-2, Evidence-based Practice Centers **PI:** Mark Helfand, MD, MPH, MS
-
39. Helfand M. Using evidence reports: progress and challenges in evidence-based decision making. *Health Affairs* 2005; 24: 123-127.
Project: 290-02-0024: EPC-2, Evidence-based Practice Centers **PI:** Mark Helfand, MD, MPH, MS
-
40. Hosking JD, Cisler RA, Couper DJ, Gastfriend DR, Kivlahan DR, Anton RF. Design and analysis of trials of combination therapies. *Journal of Studies On Alcohol. Supplement* 2005; 34-42.
Project: SUB 98-000, QUERI on Substance Abuse **PI:** John W. Finney, PhD
-
41. Ioannou GN, Weiss NS, Boyko EJ, Kowdley KV, Kahn SE, Carithers RL, Tsai EC, Dominitz JA. Is central obesity associated with cirrhosis-related death or hospitalization? A population-based, cohort study. *Clinical Gastroenterology and Hepatology* 2005; 3: 67-74.
Project: TPA 61-023, Ambulatory Care Postdoctoral Fellowship **Trainee:** George N. Ioannou, MD, MS

-
42. Jackson SL, Boyko EJ, Scholes D, Abraham L, Gupta K, Fihn SD. Predictors of urinary tract infection after menopause: a prospective study. *American Journal of Medicine* 2004; 117: 903-911.
- Project:** 2 R01 DK431341-11, Risk Factors for Urinary Tract Infections in Postmenopausal Women **PI:** Stephan D. Fihn, MD, MPH
- Project:** TPM 61-023, HSR&D MD Postdoctoral Fellowship **Trainee:** Sara L. Jackson, MD, MPH
-
43. Jackson SL, Scholes D, Boyko EJ, Abraham L, Fihn SD. Urinary incontinence and diabetes in postmenopausal women. *Diabetes Care* 2005; 28: 1730-1738.
- Project:** 2 R01 DK431341-11, Risk Factors for Urinary Tract Infections in Postmenopausal Women **PI:** Stephan D. Fihn, MD, MPH
- Project:** TPM 61-023, HSR&D MD Postdoctoral Fellowship **Trainee:** Sara L. Jackson, MD, MPH
-
44. Keefe B, Subramanian U, Tierney WM, Udris E, Willems J, McDonell M, Fihn SD. Provider response to computer-based care suggestions for chronic heart failure. *Medical Care* 2005; 43: 461-465.
- Project:** IIR 99-376, Population Based Assessments of Health and Satisfaction Using ACQUIP **PI:** Stephan D. Fihn, MD, MPH
- Project:** SDR 96-002, Ambulatory Care Quality Improvement (ACQUIP) **PI:** Stephan D. Fihn, MD, MPH
- Project:** TPM 61-026, HSR&D MD Postdoctoral Fellowship **Trainee:** Brian G. Keefe, MD
- Project:** XVA 61-015, Examination of the Final ACQUIP Database to Enhance Strategies for Collecting General and Condition-Specific Information on Health Status from Patients and Providing Reports to Primary Care Providers **PI:** Stephan D. Fihn, MD, MPH
-
45. Kim F, Olsufka M, Carlbom D, Deem S, Longstreth WT, Hanrahan M, Maynard C, Copass MK, Cobb LA. Pilot study of rapid infusion of 2 L of 4 degrees C normal saline for induction of mild hypothermia in hospitalized, comatose survivors of out-of-hospital cardiac arrest. *Circulation* 2005; 112: 715-719.
- Project:** XNV 61-055, Cardiovascular Data Analysis **PI:** Charles C. Maynard, PhD, MSW

46. Kraemer DF, Nelson HD, Bauer DC, Helfand M. Economic comparison of diagnostic approaches for evaluating osteoporosis in older women. *Osteoporosis International : A Journal Established As Result of Cooperation Between The European Foundation For Osteoporosis and The National Osteoporosis Foundation of The Usa* 2005; .

Project: 290-97-0018: Task Order 2, Technical Support of the U. S. Preventive Services Task Force

PI: Mark Helfand, MD, MPH, MS

47. Li W, Ray RM, Lampe JW, Lin MG, Gao DL, Wu C, Nelson ZC, Fitzgibbons ED, Horner N, Hu YW, Shannon J, Satia JA, Patterson RE, Stalsberg H, Thomas DB. Dietary and other risk factors in women having fibrocystic breast conditions with and without concurrent breast cancer: a nested case-control study in Shanghai, China. *International Journal of Cancer. Journal International Du Cancer* 2005; 115: 981-993.

Center: HFP 83-027

Core Investigator: Jacklien Shannon, Ph.D, M.P.H.

48. Lin P, Campbell DG, Chaney EF, Liu CF, Heagerty P, Felker BL, Hedrick SC. The influence of patient preference on depression treatment in primary care. *Annals of Behavioral Medicine* 2005; 30: 164-173.

Project: IIR 95-097, Effectiveness of Team Treatment of Depression in Primary Care

PI: Susan C. Hedrick, PhD

Project: RCS 91-403, RCS

Career Awardee: Susan C. Hedrick, PhD

49. Liu CF, Maciejewski ML, Sales AE. Changes in characteristics of veterans using the VHA health care system between 1996 and 1999. *Health Research Policy and Systems [Electronic Resource] / Biomed Central* 2005; 3: 5.

Project: 1 R01 HS10230-01A2, Selection Bias by Medicare Beneficiaries with Diabetes

PI: Matthew L. Maciejewski, PhD

50. Maciejewski ML, Liu CF, Derleth A, McDonell M, Anderson S, Fihn SD. The performance of administrative and self-reported measures for risk adjustment of veterans affairs expenditures. *Health Services Research* 2005; 40: 887-904.

Project: LIP 61-105, Comparing Risk Adjustment Measures to Predict Costs in ACQUIP

PI: Matthew L. Maciejewski, PhD

51. Maciejewski ML, Patrick DL, Williamson DF. A structured review of randomized controlled trials of weight loss showed little improvement in health-related quality of life. *Journal of Clinical Epidemiology* 2005; 58: 568-578.

Project: 1 R01 HS10230-01A2, Selection Bias by Medicare Beneficiaries with Diabetes

PI: Matthew L. Maciejewski, PhD

-
52. Matchar DB, Jacobson AK, Edson RG, Lavori PW, Ansell JE, Ezekowitz MD, Rickles F, Fiore L, Boardman K, Phibbs C, Fihn SD, Vertrees JE, Dolor R. The impact of patient self-testing of prothrombin time for managing anticoagulation: rationale and design of VA Cooperative Study #481--the Home INR Study (THINRS). *Journal of Thrombosis and Thrombolysis* 2005; 19: 163-172.
- Center:** HFP 83-027 **Core Investigator:** Stephan D. Fihn, M.D., M.P.H.
-
53. Maynard C, Lowy E, Wagner T, Sales AE. Utilization of drug-eluting stents in the Veterans Health Administration. *American Journal of Cardiology* 2005; 96: 218-220.
- Project:** IHD 98-001, QUERI on Ischemic Heart Disease **PI:** Stephan D. Fihn, MD, MPH
-
54. Mazur DJ, Hickam DH, Mazur MD, Mazur MD. The role of doctor's opinion in shared decision making: what does shared decision making really mean when considering invasive medical procedures?. *Health Expectations* 2005; 8: 97-102.
- Project:** 1 P20 HS11550, Oregon Patient Safety Evaluation Center **PI:** David H. Hickam, MD, MPH
-
55. McFall M, Saxon AJ, Thompson CE, Yoshimoto D, Malte C, Straits-Troster K, Kanter E, Zhou XH, Dougherty CM, Steele B. Improving the rates of quitting smoking for veterans with posttraumatic stress disorder. *American Journal of Psychiatry* 2005; 162: 1311-1319.
- Project:** NRI 98-194, Promoting Activity and Exercise in Chronic Pulmonary Disease: An Intervention Study **PI:** Bonnie G. Steele, PhD, RN
-
56. McFall M, Tackett J, Maciejewski ML, Richardson RD, Hunt SC, Roberts L. Predicting costs of Veterans Affairs health care in Gulf War veterans with medically unexplained physical symptoms. *Military Medicine* 2005; 170: 70-75.
- Project:** 1 R01 HS10230-01A2, Selection Bias by Medicare Beneficiaries with Diabetes **PI:** Matthew L. Maciejewski, PhD
-
57. McFarland LV, Reiber GE, Norman JE. Recruitment of Medicaid and dual-enrolled medicare beneficiaries with diabetes mellitus into a randomized controlled trial. *American Journal of Managed Care* 2005; 11: 443-448.
- Project:** RCS 98-353, RCS **Career Awardee:** Gayle E. Reiber, MPH, PhD
- Project:** XNV 61-045, Improving Self-Management and Healthy Lifestyles in Medicaid and Dual Enrolled Medicare People with Diabetes **PI:** Gayle E. Reiber, MPH, PhD
- Project:** XNV 61-065, Support of Improving Self-Management and Healthy Lifestyles in Medicaid and Dual Enrolled Medicare People with Diabetes **PI:** Gayle E. Reiber, MPH, PhD

-
58. Miller LL, Harvath TA, Ganzini L, Goy ER, Delorit MA, Jackson A. Attitudes and experiences of Oregon hospice nurses and social workers regarding assisted suicide. *Palliative Medicine* 2004; 18: 685-691.
- Project:** XNV 61-079, Family Members' Views on and Experiences with Loved Ones Who Choose Physician-assisted Suicide **PI:** Linda K. Ganzini, MD, MPH
- Project:** XNV 61-080, The Roles of Attachment, Control, Spirituality and Hopelessness in Decisions for Physician-Assisted Suicide **PI:** Linda K. Ganzini, MD, MPH
-
59. Miller RR, Sales AE, Kopjar B, Fihn SD, Bryson CL. Adherence to heart-healthy behaviors in a sample of the U.S. population. *Preventing Chronic Disease (electronic resource)* 2005; 2: A18.
- Project:** IHD 98-001, QUERI on Ischemic Heart Disease **PI:** Stephan D. Fihn, MD, MPH
- Project:** RCD 03-177, RCD **Career Awardee:** Christopher L. Bryson, MD, MS
- Project:** TPA 61-026, Ambulatory Care Postdoctoral Fellowship **Trainee:** Rosalie R. Miller, MD, MPH
-
60. Mozaffarian D, Bryson CL, Lemaitre RN, Burke GL, Siscovick DS. Fish intake and risk of incident heart failure. *Journal of The American College of Cardiology* 2005; 45: 2015-2021.
- Project:** RCD 03-177, RCD **Career Awardee:** Christopher L. Bryson, MD, MS
- Project:** TPM 61-020, HSR&D Postdoctoral Fellowship **Trainee:** Dariush Mozaffarian, MD, MPH
-
61. Mularski R, Curtis JR, Osborne M, Engelberg RA, Ganzini L. Agreement among family members in their assessment of the Quality of Dying and Death. *Journal of Pain and Symptom Management* 2004; 28: 306-315.
- Project:** XNV 61-079, Family Members' Views on and Experiences with Loved Ones Who Choose Physician-assisted Suicide **PI:** Linda K. Ganzini, MD, MPH
- Project:** XNV 61-080, The Roles of Attachment, Control, Spirituality and Hopelessness in Decisions for Physician-Assisted Suicide **PI:** Linda K. Ganzini, MD, MPH
-
62. Mularski RA, Heine CE, Osborne ML, Ganzini L, Curtis JR. Quality of dying in the ICU: ratings by family members. *Chest* 2005; 128: 280-287.
- Center:** HFP 83-027 **Core Investigator:** Linda K. Ganzini, M.D., M.P.H.
-
63. Nelson KM, Chapko MK, Reiber G, Boyko EJ. The Association between Health Insurance Coverage and Diabetes Care; Data from the 2000 Behavioral Risk Factor Surveillance System. *Health Services Research* 2005; 40: 361-372.
- Project:** RCS 98-353, RCS **Career Awardee:** Gayle E. Reiber, MPH, PhD

-
64. Norvell DC, Czerniecki JM, Reiber GE, Maynard C, Pecoraro JA, Weiss NS. The prevalence of knee pain and symptomatic knee osteoarthritis among veteran traumatic amputees and nonamputees. *Archives of Physical Medicine and Rehabilitation* 2005; 86: 487-493.
Project: RCS 98-353, RCS **Career Awardee:** Gayle E. Reiber, MPH, PhD
Project: TPR 61-036, HSR&D Predoctoral Fellowship **Trainee:** Daniel C. Norvell, PhD
-
65. Parimon T, Madtes DK, Au DH, Clark JG, Chien JW. Pretransplant lung function, respiratory failure, and mortality after stem cell transplantation. *American Journal of Respiratory and Critical Care Medicine* 2005; 172: 384-390.
Project: RCD 00-018, RCD **Career Awardee:** David H. Au, MD, MS
-
66. Pignone M, Saha S, Hoerger T, Lohr KN, Teutsch S, Mandelblatt J. Challenges in systematic reviews of economic analyses. *Annals of Internal Medicine* 2005; 142: 1073-1079.
Project: RCD 00-028, RCD **Career Awardee:** Somnath Saha, MD, MPH
-
67. Ripa RS, Holmvang L, Maynard C, Sejersten M, Clemmensen P, Grande P, Lindahl B, Lagerqvist B, Wallentin L, Wagner GS. Consideration of the total ST-segment deviation on the initial electrocardiogram for predicting final acute posterior myocardial infarct size in patients with maximum ST-segment deviation as depression in leads V1 through V3. A FRISC II substudy. *Journal of Electrocardiology* 2005; 38: 180-186.
Project: XNV 61-055, Cardiovascular Data Analysis **PI:** Charles C. Maynard, PhD, MSW
-
68. Ripa RS, Persson E, Heden B, Maynard C, Christian TF, Hammill S, Pahlm O, Wagner GS. Comparison between human and automated electrocardiographic waveform measurements for calculating the Anderson-Wilkins acuteness score in patients with acute myocardial infarction. *Journal of Electrocardiology* 2005; 38: 96-99.
Project: XNV 61-055, Cardiovascular Data Analysis **PI:** Charles C. Maynard, PhD, MSW
-
69. Rudolph RE, Dominitz JA, Lampe JW, Levy L, Qu P, Li SS, Lampe PD, Bronner MP, Potter JD. Risk factors for colorectal cancer in relation to number and size of aberrant crypt foci in humans. *Cancer Epidemiology, Biomarkers and Prevention* 2005; 14: 605-608.
Project: TPM 61-027, HSR&D MD Postdoctoral Fellowship (R. Rudolph) **Trainee:** Rebecca E. Rudolph, MD, MPH
-

70. Sales AE, Hedrick SC, Sullivan J, Gray SL, Curtis M, Tornatore J. Factors affecting choice of community residential care setting. *Journal of Aging and Health* 2005; 17: 190-206.

Project: 96314-G, Community Residential Care
In Washington State, Predictors of
Health Status, Service Use and Costs

PI: Susan C. Hedrick, PhD

Project: RCS 91-403, RCS

Career Awardee: Susan C. Hedrick, PhD

Project: TPP 61-007, HSR&D Postdoctoral
Fellow, PhD

Trainee: Michael P. Curtis, PhD

Project: TPP 61-010, HSR&D PhD Postdoctoral
Fellowship

Trainee: Jane B. Tornatore, PhD

71. Sales AE, Pineros SL, Magid DJ, Every NR, Sharp ND, Rumsfeld JS. The association between clinical integration of care and transfer of veterans with acute coronary syndromes from primary care VHA hospitals. *BMC Health Services Research [Electronic Resource]* 2005; 5: 2.

Project: ACC 97-079, Access to Cardiology:
Influence of Organizational Model on
Patient Outcomes

PI: Nathan R. Every, MD, MPH

Project: IHD 04-346, Supplemental QLP IHD

PI: Stephan D. Fihn, MD, MPH

Project: IHD 98-001, QUERI on Ischemic Heart
Disease

PI: Stephan D. Fihn, MD, MPH

72. Sales AE, Sharp ND, Li YF, Greiner GT, Lowy E, Mitchell P, Sochalski JA, Cournoyer P. Nurse Staffing and Patient Outcomes in Veterans Affairs Hospitals. *Journal of Nursing Administration* 2005; 35: 459-466.

Project: IIR 01-160, Nurse Staffing and Patient
Outcomes in VA

PI: Anne E. Sales, PhD, MSN, RN

73. Santaguida PL, Helfand M, Raina P. Challenges in systematic reviews that evaluate drug efficacy or effectiveness. *Annals of Internal Medicine* 2005; 142: 1066-1072.

Project: XNV 61-073, Drug Class Reviews for the
Oregon Health Plan Practitioner-
managed Prescription Drug Plan

PI: Mark Helfand, MD, MPH, MS

74. Schwartz DL, Ford E, Rajendran J, Yueh B, Coltrera MD, Virgin J, Anzai Y, Haynor D, Lewellyn B, Mattes D, Meyer J, Phillips M, LeBlanc M, Kinahan P, Krohn K, Eary J, Laramore GE. FDG-PET/CT imaging for preradiotherapy staging of head-and-neck squamous cell carcinoma. *International Journal of Radiation Oncology, Biology, Physics* 2005; 61: 129-136.

Project: RCD 98-318, RCD

Career Awardee: Bevan Yueh, MD, MPH

-
75. Schwartz DL, Ford EC, Rajendran J, Yueh B, Coltrera MD, Virgin J, Anzai Y, Haynor D, Lewellen B, Mattes D, Kinahan P, Meyer J, Phillips M, LeBlanc M, Krohn K, Eary J, Laramore GE. FDG-PET/CT-guided intensity modulated head and neck radiotherapy: a pilot investigation. *Head and Neck* 2005; 27: 478-487.
Project: RCD 98-318, RCD **Career Awardee:** Bevan Yueh, MD, MPH
-
76. Schwartz DL, Montgomery RB, Yueh B, Donahue M, Anzai Y, Canby R, Buelna R, Anderson L, Boyd C, Hutson J, Keegan K. Phase I and initial phase II results from a trial investigating weekly docetaxel and carboplatin given neoadjuvantly and then concurrently with concomitant boost radiotherapy for locally advanced squamous cell carcinoma of the head and neck. *Cancer* 2005; 103: 2534-2543.
Project: RCD 98-318, RCD **Career Awardee:** Bevan Yueh, MD, MPH
-
77. Shannon J, Ray R, Wu C, Nelson Z, Gao DL, Li W, Hu W, Lampe J, Horner N, Satia J, Patterson R, Fitzgibbons D, Porter P, Thomas D. Food and botanical groupings and risk of breast cancer: a case-control study in Shanghai, China. *Cancer Epidemiology, Biomarkers and Prevention* 2005; 14: 81-90.
Center: HFP 83-027 **Core Investigator:** Jacklien Shannon, Ph.D, M.P.H.
-
78. Shannon J, Tewoderos S, Garzotto M, Beer TM, Derenick R, Palma A, Farris PE. Statins and prostate cancer risk: a case-control study. *American Journal of Epidemiology* 2005; 162: 318-325.
Project: XNV 61-074, Comorbidities, Patient Characteristics, and Outcomes of Prostate Carcinoma **PI:** David H. Hickam, MD, MPH
-
79. Shores MM, Mocerri VM, Sloan KL, Matsumoto AM, Kivlahan DR. Low testosterone levels predict incident depressive illness in older men: effects of age and medical morbidity. *Journal of Clinical Psychiatry* 2005; 66: 7-14.
Center: HFP 83-027 **Core Investigator:** Kevin L. Sloan, M.D.; Daniel R. Kivlahan, Ph.D
-
80. Simpson TL, Kivlahan DR, Bush KR, McFall ME. Telephone self-monitoring among alcohol use disorder patients in early recovery: a randomized study of feasibility and measurement reactivity. *Drug and Alcohol Dependence* 2005; 79: 241-250.
Project: SUB 98-000, QUERI on Substance Abuse **PI:** John W. Finney, PhD
-
81. Song X, Zhou XH. A marginal model approach for analysis of multi-reader multi-test receiver operating characteristic (ROC) data. *Biostatistics* 2005; 6: 303-312.
Project: 1 R01 HL62567-01A3, Causal Analysis of Encouragement Design Studies **PI:** Xiao-Hua Andrew Zhou, PhD, MSc

82. Stern RE, Yueh B, Lewis C, Norton S, Sie KC. Recent epidemiology of pediatric cochlear implantation in the United States: disparity among children of different ethnicity and socioeconomic status. *The Laryngoscope* 2005; 115: 125-131.

Project: RCD 98-318, RCD

Career Awardee: Bevan Yueh, MD, MPH

83. Takahashi TA, Johnson KM, Bradley KA. A population-based study of HIV testing practices and perceptions in 4 U.S. states. *Journal of General Internal Medicine* 2005; 20: 618-622.

Project: 1K23 AA00313, Effectiveness of Primary Care Alcohol Interventions

PI: Katharine A. Bradley, MD, MPH

Project: TPA 61-020, Ambulatory Care Postdoctoral Fellow

Trainee: Traci A. Takahashi, MD, MPH

84. Tierney WM, Gerrity MS. Scientific discourse, corporate ghostwriting, journal policy, and public trust. *Journal of General Internal Medicine* 2005; 20: 550-551.

Project: R13 HS12085-01, Evidence Based Medicine for the Practicing Clinician

PI: Martha S. Gerrity, MD, MPH, PhD

85. Tierney WM, Overhage JM, Murray MD, Harris LE, Zhou XH, Eckert GJ, Smith FE, Nienaber N, McDonald CJ, Wolinsky FD. Can computer-generated evidence-based care suggestions enhance evidence-based management of asthma and chronic obstructive pulmonary disease? A randomized, controlled trial. *Health Services Research* 2005; 40: 477-497.

Project: LIP 61-205, Inferences on Veterans' Health Care Costs Using New Semi-parametric Regression Models

PI: Xiao-Hua Andrew Zhou, PhD, MSc

86. Tuteja AK, Talley NJ, Joos SK, Woehl JV, Hickam DH. Is constipation associated with decreased physical activity in normally active subjects?. *American Journal of Gastroenterology* 2005; 100: 124-129.

Center: HFP 83-027

Core Investigator: David H. Hickam, M.D., M.P.H.

87. Witsell DL, Stewart MG, Monsell EM, Hadley JA, Terrell JE, Yueh B, Rosenfeld RM, Hannley MT, Holzer SS. The Cooperative Outcomes Group for ENT: a multicenter prospective cohort study on the outcomes of tympanostomy tubes for children with otitis media. *Archives of Otolaryngology -- Head & Neck Surgery* 2005; 132: 180-188.

Project: RCD 98-318, RCD

Career Awardee: Bevan Yueh, MD, MPH

88. Yueh B, McDowell JA, Collins M, Souza PE, Loovis CF, Deyo RA. Development and validation of the effectiveness of the auditory rehabilitation scale. *Archives of Otolaryngology -- Head & Neck Surgery* 2005; 131: 851-856.

Project: RCD 98-318, RCD

Career Awardee: Bevan Yueh, MD, MPH

89. Zarkin GA, Bray JW, Mitra D, Cisler RA, Kivlahan DR. Cost methodology of COMBINE. Journal of Studies On Alcohol. Supplement 2005; 50-55.

Project: SUI 99-109, Onsite versus Referral
Models of Primary Care for Substance
Abusing Patients

PI: Andrew J. Saxon, MD

90. Zhou XH, Castelluccio P, Zhou C. Nonparametric estimation of ROC curves in the absence of a gold standard. Biometrics 2005; 61: 600-609.

Project: 1 R01 HL62567-01A3, Causal Analysis
of Encouragement Design Studies

PI: Xiao-Hua Andrew Zhou, PhD,
MSc

91. Zhou XH, Dinh P. Nonparametric confidence intervals for the one- and two-sample problems. Biostatistics 2005; 6: 187-200.

Project: 1 R01 HL62567-01A3, Causal Analysis
of Encouragement Design Studies

PI: Xiao-Hua Andrew Zhou, PhD,
MSc

Conference Presentations / Abstracts

1. Au DH. Critical Appraisal of Clinical Literature of Cohort and Case-Controlled Studies. American Thoracic Society International Meeting. San Diego, CA 2005.
Project: RCD 00-018, RCD **Career Awardee:** David H. Au, MD, MS
Project: RCD 03-177, RCD **Career Awardee:** Christopher L. Bryson, MD, MS

2. Bryson CL, Au DH. The effects of smoking cessation on COPD exasperbation risk. American Thoracic Society International Meeting. San Diego, CA 2005.
Project: RCD 00-018, RCD **Career Awardee:** David H. Au, MD, MS

3. Bryson CL, Au DH. Effects of Inhaled Corticosteroids on Glucose Control. American Thoracic Society International Meeting. San Diego, CA 2005.
Project: RCD 00-018, RCD **Career Awardee:** David H. Au, MD, MS
Project: RCD 03-177, RCD **Career Awardee:** Christopher L. Bryson, MD, MS

4. Chapko MK, Liu CF, Perkins M, Li YF, Maciejewski ML. Equivalence of Two Health Care Costing Methods: Micro-Costing and Cost Functions. 5th World Congress of the International Health Economics Association. Spain 2005.
Project: IIR 00-078, Telemedicine Intervention to Improve Depression Care in Rural CBOCs **PI:** John C. Fortney, PhD

5. Chi R, Neuzil KM, Reiber GE. Influenza and pneumococcal vaccine coverage among older veterans: Results from the behavioral risk factor surveillance system. American Geriatric Society. Los Angeles, CA 2004.
Project: RCS 98-353, RCS **Career Awardee:** Gayle E. Reiber, MPH, PhD

6. Fan VS, Ramsey S, Make BJ, Martinez FJ. Physiologic Variables, Dyspnea, and Health Care Use Predict COPD Exacerbations. American Thoracic Society International Meeting. San Diego, CA 2005.
Project: RCS 98-353, RCS **Career Awardee:** Gayle E. Reiber, MPH, PhD

7. Hedrick SC, Guihan M, Chapko MK, Manheim L, Sullivan J, Tornatore J, Zhou XH, Wang L. Outcomes of the Assisted Living Pilot Program. Academy Health 2005 Annual Meeting. Boston, MA 2005.
Project: MRR 00-016, Assisted Living Pilot Evaluation **PI:** Susan C. Hedrick, PhD
Project: RCS 91-403, RCS **Career Awardee:** Susan C. Hedrick, PhD

-
8. Liu CF. Building the VA business case for quality improvement and health services research. VA Health Services Research and Development Annual Meeting. Baltimore, MD 2005.
Project: MNT 02-209, Value and Cost of Translating Collaborative Care Models for Depression
PI: JoAnn E. Kirchner, MD
-
9. Liu CF. The trajectory toward national rollout of depression care: Building villages, not empires. VA Health Services Research and Development Annual Meeting. Baltimore, MD 2005.
Project: MNT 02-209, Value and Cost of Translating Collaborative Care Models for Depression
PI: JoAnn E. Kirchner, MD
-
10. Liu CF. What does it take to implement an evidence-based depression treatment in primary care. VA Health Services Research and Development Annual Meeting. Baltimore, MD 2005.
Project: MNT 02-209, Value and Cost of Translating Collaborative Care Models for Depression
PI: JoAnn E. Kirchner, MD
-
11. Liu CF. What does it take to implement an evidence-based depression treatment in primary care. International Health Economic Association. Spain 2005.
Project: MNT 02-209, Value and Cost of Translating Collaborative Care Models for Depression
PI: JoAnn E. Kirchner, MD
-
12. Maciejewski ML. CBOC Utilization and Cost Data from DSS: Can we Believe what we see?. VA Health Services Research and Development Annual Meeting. Baltimore, MD 2005.
Project: IIR 00-078, Telemedicine Intervention to Improve Depression Care in Rural CBOCs
PI: John C. Fortney, PhD
-
13. Maciejewski ML. Utilization and Expenditures of Veterans Obtaining Primary Care at VAMC's and CBOC's. VA Health Services Research and Development Annual Meeting. Baltimore, MD 2005.
Project: IIR 00-078, Telemedicine Intervention to Improve Depression Care in Rural CBOCs
PI: John C. Fortney, PhD
-
14. Maciejewski ML. Equivalence of two health Care Costing Methods: Micro-Costing and Cost Functions. International Health Economic Association. Spain 2005.
Project: IIR 00-078, Telemedicine Intervention to Improve Depression Care in Rural CBOCs
PI: John C. Fortney, PhD

-
15. Maciejewski ML. Two approaches to adjusting for selection bias in cross-sectional data: Instrumental variables and propensity score. International Health Economic Association Annual Meeting. Spain 2005.
Project: 1 R01 HS10230-01A2, Selection Bias by Medicare Beneficiaries with Diabetes **PI:** Matthew L. Maciejewski, PhD
-
16. Maciejewski ML. Prior expenditures and health plan choice by Medicare beneficiaries with diabetes. International Health Economic Association. Spain 2005.
Project: 1 R01 HS10230-01A2, Selection Bias by Medicare Beneficiaries with Diabetes **PI:** Matthew L. Maciejewski, PhD
-
17. Maciejewski ML, Liu CF. Make or Buy to Provide Primary Care in the VA Health Care System. International Health Economic Association. Spain 2005.
Project: IIR 00-078, Telemedicine Intervention to Improve Depression Care in Rural CBOCs **PI:** John C. Fortney, PhD
Project: IIR 20-005, Evaluation of Community Based Outpatient Clinic Costs Using DSS Data **PI:** Matthew L. Maciejewski, PhD
-
18. Nelson KM, Chapko MK, Reiber GE, Boyko EJ. The association between health insurance coverage and diabetes care—Data from the 2000 Behavioral Risk Factor Surveillance System. VA Health Services Research and Development Annual Meeting. Baltimore, MD 2005.
Project: RCS 98-353, RCS **Career Awardee:** Gayle E. Reiber, MPH, PhD
-
19. Rajan M, Pogach L, Johnston MV, Agbaje I, Reiber GE. Facility-level variations in self-foot care education, services and behavior among veterans. American Diabetes Association. Washington, DC 2005.
Project: RCS 98-353, RCS **Career Awardee:** Gayle E. Reiber, MPH, PhD
-
20. Reiber GE. Select Evidence-Based Published Research on Diabetes and Foot Issues. 19th Annual Diabetic Foot Update: A Multidisciplinary Approach. San Antonio, TX 2004.
Project: RCS 98-353, RCS **Career Awardee:** Gayle E. Reiber, MPH, PhD
-
21. Steele BG, Belza B, Cain K, Coppersmith J, Howard J, Lakshminarayan S. Does self-reported non-ventilatory limitation to six-minute walk distance (6MWD) contribute to change in 6MWD following pulmonary rehabilitation. American Thoracic Society International Meeting. San Diego, CA 2005.
Project: NRI 98-194, Promoting Activity and Exercise in Chronic Pulmonary Disease: An Intervention Study **PI:** Bonnie G. Steele, PhD, RN

-
22. Steele BG, Coppersmith J, Belza B, Cain K, Howard J, Lakshminarayan S. Promoting activity and exercise in chronic lung disease: An intervention study. American Thoracic Society International Meeting. San Diego, CA 2005.

Project: NRI 98-194, Promoting Activity and Exercise in Chronic Pulmonary Disease: An Intervention Study

PI: Bonnie G. Steele, PhD, RN

-
23. Tong J, Reiber GE, Boyko EJ. Self-management reduces symptoms of depression in patients with diabetes. Society of General Internal Medicine 28th Annual Meeting. New Orleans, LA 2005.

Project: RCS 98-353, RCS

Career Awardee: Gayle E. Reiber, MPH, PhD

Reports

1. Fihn SD (American College of Physicians). Medical Knowledge Self-Assessment Program (MKSAP) Audio Companion. 2004 Dec 10 . Philadelphia, PA. Report Number: 13.

Center: HFP 83-027

Core Investigator: Stephan D. Fihn, MD, MPH

Electronic Citation

1. Bonner L, Felker B, Chaney E, Vollen K, Berry K, Revay B, Simon B, Kofoed L, Ober S, Worley L, Fotiades J, Sherman S. Suicide risk response: enhancing patient safety through development of effective institutional policies. In: Advances in Patient Safety: From Research to Implementation [electronic compendium] Volume 3. [Advances in Patient Safety: From Research to Implementation]. Available: 2005 Feb

Project: MHI 99-375, Well-Being Among
Veterans Enhancement Study (WAVES)

PI: Edmund F. Chaney, PhD

Link to PDF(s)

<http://www.ahcpr.gov/downloads/pub/advances/vol3/Bonner.pdf>

Project: MNT 01-027, Translating Best Practices
for Depression Care into VA Care
Solutions

PI: Lisa V. Rubenstein, MD, MSPH

Link to PDF(s)

<http://www.ahcpr.gov/downloads/pub/advances/vol3/Bonner.pdf>

Journal Other

-
1. Fihn SD. New VA Center To Develop State-Of-The-Art Care For Limb Loss. US Medicine 2004; 40:.
Center: HFP 83-027 **Core Investigator:** Stephan D. Fihn, MD, MPH

 2. Fihn SD. White House, VA Conference Explores Technology and Disability. US Medicine 2004; 40:.
Center: HFP 83-027 **Core Investigator:** Stephan D. Fihn, MD, MPH

 3. Francis J, Fihn SD. Responding To The Needs Of Veterans And The Nation. US Medicine 2005; 41: 12-12.
Center: HFP 83-027 **Core Investigator:** Stephan D. Fihn, MD MPH

 4. Huang G, Schuster B, Fihn SD. Advancing Veterans' care through clinical research. US Medicine 2004; 40:.
Center: HFP 83-027 **Core Investigator:** Stephan D. Fihn, MD MPH

HSR&D Article

-
1. Fihn SD. VA Research: Meeting the Challenge of a New Generation of Veterans. Forum (Chicago, Ill.) 2005; Special Supplement: 3-3.
Center: HFP 83-027 **Core Investigator:** Stephan D. Fihn, MD MPH

 2. Fihn SD. VA Research: Responding to New Challenges. Forum (Chicago, Ill.) 2005; 3-3.
Center: HFP 83-027 **Core Investigator:** Stephan D. Fihn, MD MPH

 3. Fihn SD. OMB Performance ratings: What they mean for VA Investigators. VA Research Currents 2005; 5: 1-3.
Center: HFP 83-027 **Core Investigator:** Stephan D. Fihn, MD MPH

 4. Fihn SD. Despite budget cuts, VA research should continue to shine in FY '05. VA Research Currents 2005; 5: 1-3.
Center: HFP 83-027 **Core Investigator:** Stephan D. Fihn, MD MPH

6.1 Key Impacts

Key Publications

- 1 **Lin P, Campbell D, Liu CF, Chaney EF, Heagerty P, Felker BL, Hedrick SC. The influence of patient preference on depression treatment in primary care. *Annals of Behavioral Medicine*, 2005;30:164-73.**

Based on a positive effectiveness trial of collaborative care for depression in primary care, the findings of this widely-reported paper showed that explicitly including patients and their preferences in the treatment planning process had a beneficial impact on care.

- 2 **Yueh B, McDowell JA, Collins MP, Souza, PE, Loovis CF, Deyo RA. Development and validation of the effectiveness of auditory rehabilitation scale. *Arch Otolaryngol Head Neck Surg*. 2005;131(10):851-6.**

Dr. Bevan Yueh and his colleagues describe their new scale designed to evaluate the Effectiveness of Auditory Rehabilitation (EAR). It is anticipated the EAR scale will become an outcome measure in future studies and surgical technologies.

- 3 **Sales A, Sharp N, Li Y, Greiner G, Lowy E, Mitchell P, Sochalski J, and Cournoyer P. Nurse Staffing and Patient Outcomes in Veterans Administration Hospitals. *Journal of Nursing Administration*, 2005.**

Dr. Anne Sales and her colleagues conducted a study of the characteristics and perceptions of nurses working in 125 VA Medical Centers. Nurse executives have used the findings to launch programs to improve communication among nursing staff, recognition of high quality care, and other efforts to improve the practice environment.

System Improvements resulting from center work (indicate VA or non-VA)

- 1 **Assisted Living Pilot Program Evaluation, Susan Hedrick MRR 00-016**

The Final Report for the evaluation of the VA Assisted Living Pilot Program was submitted to Congress with an accompanying letter by the Secretary of Veteran Affairs that summarized the Report findings and stated that the VA was not seeking authority to provide assisted living services. This study was therefore used to help decide on the place of this type of care in the VA and should be of use outside VA as well.

- 2 **Development of a Cardiac Assessment and Tracking System - Catheterization Labs (CART-CL), Stephan Fihn XVA 61-023**

The development of a cardiac assessment and tracking system involved the creation of a national system for tracking and reporting the outcomes of invasive cardiac procedures throughout VHA.

- 3 **Expanding and Testing VA Collaborative Care Models for Depression, Edmund Chaney MNT 03-215**

TIDES and RETIDES testing were designed to foster improved evidence-based collaborative care for depression in primary care.

7.1 Key Services

HSRD

1 Data Security Policy and Data Extraction

Our data manager, Jeff Todd-Stenberg, developed a comprehensive data security policy and training program for our Center. It includes policies regarding storage of protected health information (PHI) on the VA network; policies regarding PHI data sharing, data use and business associate agreements. The procedures, policies, and training program have been adopted by other local VA Research Centers and Service Lines and have been used as models nationally by other HSR&D CoEs and Medical Centers. Jeff has developed VA Fileman templates and SmarTerm macro programs that are tailored for cohort-specific VISTA data extractions. These templates and macros have been used at other HSR&D CoEs and Medical Centers in multi-site studies nationally. In addition, he developed the SAS programs for the RxRisk-V risk adjustment tool and has made them available nationally upon request to both VA and non-VA users.

2 Human Subjects and HIPAA Compliance

Connie Nakano, our IRB Coordinator, provides guidance and training to our investigators to ensure compliance with local and national Human Subject and HIPAA policies. She developed a multi-functional, searchable Human Subjects website detailing our local and VISN multi-site IRB process. It has been used as a template by our R&D office and other HSR&D CoEs. At the 2005 VA Research Compliance Officers Meeting, Connie presented "Health Services Research and Human Subjects Issue: Teachable Moments." These activities help ensure our research protects the rights and privacy of participants while helping those tasked with ensuring compliance understand the unique features of health services research.

3 VA Statistician Association for Health Services Studies

Andrew Zhou PhD, Senior Biostatistician, is creating a VA Statistician Association to help develop and establish new and standard methods of analysis for cost and outcome data. Membership will be open to all VA-affiliated statisticians who are working on health services studies. The Association will plan VA programs and session tracks to highlight VA research activity at national events including the HSR&D National Meeting and the American Statistical Association Annual Meeting and Health Policy Conference.

Other VA/ORD

1 VA Nursing Outcomes Database Project (VANOD)

Dr. Anne Sales and the VANOD project team have developed a standardized method to collect data related to nurse sensitive indicators of quality within VHA facilities and integrated these into a national database. This nursing outcomes database is accessible to VA administrators, nurse executives, and quality managers. Its clinically relevant indicators help quickly define evidence based nursing practices which in turn impact health care policy decisions. The Director of Health Outcomes Management from the Madigan Army Medical Center evaluated VANOD as a possible model for their Military Nursing Outcomes Database (MILNOD).

2 Annual Report Template (ART) Development

Supported by the Seattle CoE, the Annual Report Template is an automated reporting system that gathers, tracks, and organizes personnel, funding, and project data from VA Health Services Research and Development (HSR&D) Centers and all ORD Clinical Trails. ART is accessible to over 200 users nationwide allowing individual Center and project level data entry while providing VACO with a centralized quality-reporting tool. Management of the program includes technical development, database management, field training and support, quality control, and reporting. The end products include HSRD Center Annual Reports, Quarterly Matrix Reports, Cider citation updates and National Library of Medicine clinical trial updates, fulfilling the national requirement to track all ORD clinical trials. All of these reports are used by ORD in preparing reports to Congress.

3 Cardiac Care Followup Cohort Study (CCFCS)

Also a part of the national VA Cardiac Care Initiative, Cardiac Care FollowUp Cohort Study (CCFCS) has provided a foundation for assessing the quality of care for patients in VHA with acute coronary syndromes, including acute myocardial infarction (ST and non-ST elevation) and unstable angina. Investigators on this project worked closely with the Office of Quality and Performance to develop a

national measure of process and outcome, and have analyzed data from a 100% sample of VA patients with acute MI. As part of this project, new risk adjustment models derived specifically from VA patients have been developed and compared with other existing models. For example, the models have been used by OQP to establish the inferiority of risk adjustment models applied by JCAHO and to persuade that organization to abandon them. A major finding of the CCFCS study has helped to explain earlier findings from a Price-Waterhouse-Coopers/Harvard study showing higher mortality among patients treated within VHA for acute MI compared with patients treated in the hospitals funded by Medicare. It was found that more than 20% of MIs occurring in VHA actually develop in the hospital in the setting of serious medical or surgical illness and that survival is markedly worse than patients whose MI occurred before admission. After adjustment for the higher mortality of in-hospital MIs, it was shown that survival of patients with acute MI in the VA system is similar to patients under Medicare.

National (non-VA)

1 Blue Ribbon Panel for the Society of General Internal Medicine on the “Future of General Internal Medicine”

Dr. Stephan Fihn is presently chairing a Blue Ribbon Panel for the Society of General Internal Medicine on the “Future of General Internal Medicine.”

2 National and International Medical and Research Societies and Editorial Boards

Our investigators are members on boards and committees for numerous national and international medical and research societies and editorial boards for multiple research journals.

3 NIH, AHQR Scientific Review Boards and Study Sections

Our investigators serve on Scientific Review Boards/Study sections for several sections in the National Institutes of Health, Agency for Healthcare Quality Research.

8.1 National and Regional Leadership Roles (Table 4)

Seattle Center of Excellence National and Regional Leadership Roles, FY2005

Name	Organization	Org Type*	Role	VA Sponsored	VA Contribution**
D. Au MD MS	American Thoracic Society	AS	Member, Program Committee of Behavioral Sciences Assembly	No	4
	American Thoracic Society	AS	Chair, Behavioral Sciences Assembly Planning Committee	No	4
	American Thoracic Society	AS	Member, Membership Committee	No	4
	National Committee for Quality Assurance	EC	Measurement Assessment Team for COPD	No	6
K. Bradley MD MPH	Society of General Internal Medicine	EC	Member, National Steering Committee, Personal Professional Balance Taskforce	No	5
	Robert Wood Johnson Foundation	RG	Grant Reviewer, Substance Abuse Policy Program	No	6
	Department of Veterans Affairs	VAN	Co-Clinical Coordinator, VA SUD QUERI	Yes	1,2,6
	Department of Veterans Affairs	VAN	Member, Executive Committee, Substance Use Disorders, Quality Enhancement Research Initiative (QUERI)	Yes	2,3
E. Chaney PhD	Department of Veterans Affairs	EC	Member, VA HSR&D Implementation Field Based Science Advisory Group	Yes	2
	Human Subjects Review Committee, University of Washington	RG	Member, Review Committee C	No	5
	Department of Veterans Affairs	VAN	Member, Mental Health QUERI Depression Subgroup Committee	Yes	1
	Department of Veterans Affairs	VAN	Chair, Depression Task Group of the Continuous Recovery/Disease Management Subgroup of the My HealtheVet Mental Health Workgroup	Yes	2
	Department of Veterans Affairs	VAN	Member, Management and Implementation Group, VA HSR&D Scientific Review and Evaluation Board	Yes	1
M. Chapko PhD	Department of Veteran Affairs	VAN	Member, Scientific Merit Review Board, HSR&D Service	Yes	6
S. Dobscha MD	Portland VA Institutional Review Board #2	NB	Alternate Member	No	2,5
	National VA Pain Research Workgroup	RG	Member	Yes	1,4,5
	Portland VA Research and Development Committee	VAR	Alternate Member	Yes	4,5

Name	Organization	Org Type*	Role	VA Sponsored	VA Contribution**
J. Dominitz MD MHS	American Society for Gastrointestinal Endoscopy	AS	Member, Training Committee and Scientific Program Committee Outcomes Section	No	5
	American Gastroenterological Association	CL	Member, Clinical Practice Committee	No	6
	American Gastroenterological Association	CL	Member, Quality Subcommittee	No	6
	Gastrointestinal Endoscopy	EB	Associate Editor	No	5
	Department of Veterans Affairs	VAN	Member, Executive Committee, Colorectal Cancer Quality Enhancement Research Initiative (QUERI)	Yes	1,2
	Department of Veterans Affairs	VAN	Member, VA Hepatitis C Technical Advisory Group	Yes	1,2,6
	Department of Veterans Affairs	VAN	Director, NW Hepatitis C Field-Based Resource Center	Yes	1,2,6
	Department of Veterans Affairs	VAN	Member, Hepatitis C Resource Center Leadership Committee	Yes	1,6
V. Fan MD MPH	American Thoracic Society	CL	Reviewer, Program Committee, Behavioral Sciences Assembly	No	5
S. Fihn MD MPH	American College of Physicians	AS	Fellow	No	6
	American Journal of Medicine	EB	Member, Editorial Board	No	6
	Journal of General Internal Medicine	EB	Member, Editorial Board	No	6
	Department of Veterans Affairs	EC	Member, Advisory Committee, VA HSR&D Management Decision and Research Center	Yes	1
	Department of Veterans Affairs	VAN	Co-Chair, Health Systems Committee	Yes	1
	Department of Veterans Affairs	VAN	Acting Chief Research and Development Officer	Yes	1
	Department of Veterans Affairs	VAN	Member, VA Research and Development National Field Research Advisory Group	Yes	3
	Department of Veterans Affairs	VAN	Member, Steering Committee, Veterans Affairs Information Research and Education Center (VIREC)	Yes	1
L. Ganzini MD MPH	Department of Veterans Affairs	VAN	Member, National Leadership Board	Yes	1
M. Gerrity MD MPH PhD	Palliative and Supportive Care	EB	Member	No	5
	Journal of General Internal Medicine	EB	Co-Editor	No	4
	Department of Veterans Affairs	EC	Member, HSR&D Field-based Science Advisory Committee	Yes	2
	MacArthur Foundation	EC	Member, National Steering Committee, Initiative on Depression in Primary Care	No	5
S. Hedrick PhD	Department of Veterans Affairs	VAN	Member, Executive Committee, QUERI Mental Health Executive Committee	Yes	2
	Gerontological Society of America	AS	Member, Co-Convener, Special Interest Group on Assisted Living	No	5
	Health Services Research	EB	Member, Editorial Board	No	5
	Department of Veterans Affairs	VAN	Member, Review Committee for Research Enhancement Award Programs, Merit Review Entry Program, and Research Career Scientist Program	Yes	4,5

Name	Organization	Org Type*	Role	VA Sponsored	VA Contribution**
M. Helfand MD MPH MS	American College of Physicians	AS	Consultant, Clinical Efficacy Assessment Subcommittee, Thyroid Function Tests	No	4,5
	Society for Medical Decision Making	AS	Editor-in-Chief, Medical Decision Making	No	5
	Department of Veterans Affairs	CL	Founding Member, VA Department of Defense Guidelines Council	Yes	3
	Department of Veterans Affairs	CL	Founding Member, VA Department of Defense Evidence-based Medicine Council	Yes	3
	Department of Veterans Affairs	CL	Member, VA National Complementary & Alternative Medicine Advisory Group	Yes	1
	Department of Veterans Affairs	EC	NCI/VA Cancer Quality Enhancement Research Initiative (QUERI)	Yes	2
	United States Cochrane Center	EC	Member, Advisory Board	No	6
	Department of Veterans Affairs	VAN	Founding Member, VA Advisory Council on Practice Guidelines	Yes	2
D. Hickam MD MPH	Society for Medical Decision Making	AS	Chairperson, Regulations Committee	No	3
	Department of Veterans Affairs	VAN	Member, Scientific Merit Review Board (SMRB), HSR&D Service	Yes	1
L. Humphrey MD MPH	U.S. Preventive Services Task Force	EC	Consultant, Evidence-Based Practice Center, Oregon Health and Science University, Portland	No	3
	Eli Lilly and Company	NB	Member, National Scientific Internal Medicine Advisory Board	No	6

Name	Organization	Org Type*	Role	VA Sponsored	VA Contribution**
D. Kivlahan PhD	Department of Veterans Affairs	CL	Member and Principal Editor, Working for Clinical Practice Guidelines on Management of Substance Use Disorders, 1996-	Yes	2
	National Quality Forum	CL	Participant, National Quality Forum Workshop on "Evidence-based Treatment for Substance Use Disorders"	No	3
	Journal of Consulting and Clinical Psychology	EB	Consulting Editor	No	5
	Journal of Studies on Alcohol	EB	Consulting Editor	No	5
	Department of Veterans Affairs	EC	Member, Hepatitis C Technical Advisory Group, Public Health Strategic Health Care Group, 2001-	Yes	2,6
	Department of Veterans Affairs	EC	Director, Center of Excellence in Substance Abuse Treatment and Education (CESATE), 1998-	Yes	2,4,6
	Department of Veterans Affairs	EC	Advisor, HSR&D Special Populations Field-based Science Advisory Board	Yes	1,2
	Department of Veterans Affairs	EC	Member, Substance Abuse Tactical Planning Workgroup for Mental Health Strategic Plan, 2004-2005	Yes	1,2
	Department of Veterans Affairs	RG	Member, Combined Data Safety and Monitoring Board (CoMB), HSR&D Service, 2002-	Yes	2,3,5
	Department of Veterans Affairs	VAN	Member, Work Group for VHA GPRA Mental Health External Program Evaluation, 2003-	Yes	2,3
	Department of Veterans Affairs	VAN	Clinical Coordinator, Substance Abuse Disorder QUERI, VHA HSR&D	Yes	1,2,5
	Department of Veterans Affairs	VAN	Member, Psychology Advisory Committee, Mental Health Strategic Health Care Group, 1999-	Yes	2
	Department of Veterans Affairs	VAN	Member, Substance Use Disorders Advisory Group to VHA Committee on Care of Veterans with Severe and Chronic Mental Illness, 2005-	Yes	1,2
	Department of Veterans Affairs	VAN	Consultant, VHA Office of Quality and Performance for SUD Performance Measures	Yes	2
	Department of Veterans Affairs	VAN	Member, Substance Use Disorders Tactical Planning Workgroup for VHA Mental Health Strategic Plan	Yes	1,2
	Department of Veterans Affairs	VAR	Assistant Director, Mental Illness Research Education and Clinical Center (MIRECC), 1997-	Yes	5
	Department of Veterans Affairs	VAR	Member, External Advisory Board VISN 1 Mental Illness Research Education and Clinical Center (MIRECC)	Yes	3,5
G. Larsen MD	Department of Veterans Affairs	VAN	Member, Executive Committee, National Ischemic Heart Disease Quality Enhancement Research Initiative (QUERI), 2001-	Yes	1
M. Maciejewski PhD	NIDDK	CL	Grant Reviewer, Study Section	No	5
	Academy of Health	EB	Member, Health Economics Advisory Committee	No	5
	Department of Veterans Affairs	VAN	Member, HSR&D Scientific Merit Review Board (SMRB)	Yes	1

Name	Organization	Org Type*	Role	VA Sponsored	VA Contribution**
C. Maynard PhD MSW	American Heart Journal	EB	Member, Editorial Board	No	5
	Journal of Electrocardiology	EB	Special Sections Editor Biostatistics	No	5
	Washington State Department of Social and Health Services	EC	Member, Research Subcommittee of the Citizens' Advisory Council on Alcoholism and Drug Addiction, Division of Alcohol and Substance Abuse	No	5
	Department of Veterans Affairs	VAN	Member, HSR&D Scientific Merit Review Board (SMRB) through 2008	Yes	1
	Technical Advisory Group VA Medicare Data Merge	VAN	Member	Yes	3
G. Reiber MPH PhD	Department of Veterans Affairs	EC	Core Investigator, VA Center of Excellence for Limb Loss, Prevention and Prosthetics Engineering	Yes	2,6
	State of Washington	EC	Member, Diabetes Advisory Board	No	5
	International Working Group on the Diabetic Foot	RG	Advisory Board and Panels	No	2
	Department of Veterans Affairs	VAN	Member, Diabetes Executive Committee, Quality Enhancement Research Initiative (QUERI)	Yes	1,2,3
	Department of Veterans Affairs	VAN	Member, VA Functional Status Outcomes Database Steering Committee	Yes	1,2,3
S. Saha MD MPH	Society of General Internal Medicine	AS	Co-Chair, Abstract Committee, SGIM Annual Meeting 2006	No	6
	Society of General Internal Medicine	AS	Member, Disparities Task Force	No	6
	Redes En Accion	EC	Member, Regional Advisory Committee	No	3
	Robert Wood Johnson Foundation	EC	Member, National Advisory Committee, Clinical Scholars Program	No	4
	State of Oregon	EC	Commissioner, Health Services Commission	No	5
A. Sales PhD MSN RN	Journal of General Internal Medicine	EB	Guest Editor, Special Issue (Papers and proceedings from the State of the Art VA Conference on Implementation in Healthcare)	No	2,3,4
	Agency for Healthcare Research and Quality	EC	Member, Quality Healthcare Technology and Decision Science Study Section	No	3,5
	Department of Veterans Affairs	EC	Member, Data Safety and Monitoring Board for Cooperative Studies Project #474	Yes	3,5
	VA Health Economics Research Center	EC	Member, Steering Committee	Yes	3,4,5
	Department of Veterans Affairs	VAN	Member, Executive Committee, Ischemic Heart Disease Quality Enhancement Research Initiative (QUERI)	Yes	1,2
J. Shannon PhD MPH	Department of Veterans Affairs	VAN	Member, Executive Committee, CRC Quality Enhancement Research Initiative (QUERI)	Yes	2
K. Sloan MD	Department of Veterans Affairs	VAN	Member, Advisory Board, VA Multiple Sclerosis Center of Excellence (West)	Yes	2,3

Name	Organization	Org Type*	Role	VA Sponsored	VA Contribution**
B. Yueh MD MPH	American College of Surgeons Oncology Group	AS	Member, Head and Neck Site Committee and Quality of Life Sub-Committee	No	6
	Archives of Otolaryngology/Head and Neck Surgery	EB	Member, Editorial Board	No	5
	Otolaryngology/Head and Neck Surgery	EB	Member, Editorial Board	No	5
	American Academy of Otolaryngology/Head and Neck Surgery	EC	Member, Subcommittee on Hearing Aids Committee	No	3,5
	American Academy of Otolaryngology/Head and Neck Surgery	EC	Member, Head & Neck Committee	No	3,5
	American Head & Neck Society	EC	Member, Executive Planning Committee for 8th International Conference	No	3,5
	American Head & Neck Society	EC	Member, Coding Initiative Committee, Research Committee and Program Committee	No	6
	National Cancer Institute	RG	Member, Health-related Quality of Life (HRQOL) Intergroup Committee	No	6
	Department of Veterans Affairs	VAN	Member, Special Populations Scientific Review and Evaluation Board (SREB)	Yes	2,4
	Department of Veterans Affairs	VAR	VISN 20 Surgical Quality Improvement Committee	Yes	4,5
X. Zhou PhD MSc	Biometrics	EB	Associate Editor	No	5
	Statistics in Medicine	EB	Member, Editorial Board	No	5
	U.S. Food and Drug Administration	EC	Member, Advisory Committee in Center for Devices and Radiological Health	No	3,5
	National Institute of Health	RG	Member, Biostatistical Methods and Research Design (BMRD) Study Section	No	6

* VHA National Committee (VAN), VA Regional/Network Committee (VAR), Academic Society (AS), Consensus Conference or Clinical Guidelines Development Committee (CL), Study Section or other Research Review Group (RG), Editorial Board (EB), Executive or Advisory Committee for a Research Program or National Study (EC), National Policy Board (NB)

** (1) Setting a VA research agenda, (2) oversight of a VA research product, national policy related to patient care, (3) oversight of a research product with national importance, (4) input to training of VA staff or potential researchers, (5) input to the general area of health services research, (6) national leadership of a clinical and/or academic program.