



## **2006 Annual Report**

Northwest Center for Outcomes Research in Older Adults  
A Center of Excellence  
Seattle, Washington  
HFP 83-027

Stephan D. Fihn, MD, MPH, Director

# 2006 Annual Report

## Table of Contents

<b>ANNUAL REPORT NARRATIVE SUMMARY .....</b>	<b>1</b>
<b>1 Overview</b>	
<b>2 Investigators</b>	
<b>3 Center Funding</b>	
<b>4 Research Projects</b>	
<b>5 Research Products and Dissemination</b>	
<b>6 Key Impacts</b>	
<b>7 Key Services</b>	
<b>8 National and Regional Leadership Roles</b>	
<b>9 Training Activities</b>	

## Appendices

<b>2.1 ORGANIZATIONAL CHART .....</b>	<b>11</b>
<b>2.2 INVESTIGATORS (TABLE 1) .....</b>	<b>12</b>
<b>3.1 BUDGET INFORMATION (TABLE 2) .....</b>	<b>28</b>
<b>3.2 FUNDING CHARTS (FIGURES 1-4) .....</b>	<b>30</b>
<b>4.1 RESEARCH PROJECTS AND PROGRAMS (TABLE 3) .....</b>	<b>32</b>
<b>5.1 BIBLIOGRAPHY .....</b>	<b>42</b>
<b>6.1 NATIONAL AND REGIONAL LEADERSHIP ROLES (TABLE 4) .....</b>	<b>78</b>

## 1 Overview

The Northwest Center for Outcome Research in Older Adults is located at the VA Puget Sound Health Care System Seattle Division and is affiliated with the Portland VA Medical Center. Major collaborating community institutions for this VA HSR&D Center of Excellence (CoE) include the University of Washington School of Public Health and Community Medicine and School of Medicine.

The mission of the Northwest Center is to perform state-of-the-art research, generate new knowledge and research methods, provide high caliber training in health services research, and assist VA policy makers in a rapidly changing health care environment. The research objectives of the Center are to provide information to improve the delivery of health services to veterans and to contribute to scientific progress in the field of health services research. We continue to accomplish these objectives by focusing on four emphasis areas:

- Management of Chronic Disease in Primary and Specialty Care
- Preservation of Independence in Older Adults
- Evaluation of Alternative Delivery Systems
- Basic Methodology in Health Services Research.

2006 was a highly successful year for our research endeavors. Three Merit Reviews and two Nursing Research Initiatives were approved for funding and will begin in 2007:

- Assessing Information Value in Computerized Patient Documentation System (IIR 05-0190), Ken Hammond, MD
- Senior Coordinated Referral (SCORE) Study (IAD 06-036), Susan Hedrick, PhD
- Causal Inferences in Quality of Life with Deaths (IAD 06-088), Andrew Zhou, PhD
- Detection of Intimate Partner Violence (NRI 04-040), April Gerlock, PhD ARNP
- An Intervention to Enhance Function in Severe Cardiopulmonary Illness (NRI 04-242), Bonnie Steele, PhD ARNP

One of our Center investigators was also successful in obtaining competitive grant funding from non-VA sources:

- Long Term Oxygen Treatment Trial (LOTT) Regional Clinical Centers (NHLBI-HR-06-06), David Au, MD MPH

2006 was also a year of transition for the Center. Christian Helfrich PhD was recruited to assume the role of Implementation Coordinator for the IHD QUERI, replacing Dr. Anne Sales who accepted a faculty position with the University of Edmonton, Department of Nursing Research. Dr. Matthew Maciejewski transferred to the Durham VA and has a faculty appointment with the University of North Carolina, Department of Pharmacy. The Center is actively recruiting several new PhD and MD investigators and we expect to have several on board by end of this academic year.

This was also the final year of our affiliate relationship with Portland. Drs. Linda Ganzini (Director) and David Hickam (Associate Director) successfully competed for a Research Enhancement Award Program (REAP). We have been supportive of their new status and working closely with them to ensure a smooth transition.

## 2 Investigators

Currently there are 25 core and 13 affiliate investigators who conduct an extensive program of health services research in Center funded by a combination of VA and non-VA sources. In addition, consistent with the new ART definitions, we have 16 associate investigators who are PIs on pilot projects or other non-HSR&D projects: Drs. Brad Anawalt, Jason Dornitz, Cynthia Dougherty, April Gerlock, Jodie Haselkorn, Mark Helfand, Yu-Fang Li, Lynne McFarland, Sandra Pineros, Suparna Rajan, Greg Raugi, Sheri Reder, Nancy Sharp, Carolyn Wallace, Lisa Winterbottom, and Bessie Young.

### **3 Center Funding**

Funding to the Center in 2006 was somewhat lower than our 2005 funding level but reflects continued leveraging of our core funds, which is just 6.8% of our total Center funding. The decrease was due to a change in reporting methods for NIH funding. Supplemental funds from Central Office enabled us to support the Annual Report Template (ART) team and the extensive restructuring of the ART database. The VA Puget Sound Health Care System continues to provide support for the costs of the lease and maintenance of our off-site office space. This support has enabled us to provide adequate space for our all of our research activities.

### **4 Research Projects**

During 2006, the Northwest Center supported a total of 104 active awards for research projects, research administration, and research training. This represents an increase from 2005. The VA HSR&D-funded research projects during the reporting period includes 23 Investigator Initiated Research (IIR/NRI) projects, 2 Service Directed Research projects, 12 other VA funded projects, 9 Training Programs, 11 Quality Enhancement Research Initiative (QuERI) related projects, and 7 Career Development or Career Scientist Awards.

Eight new VA studies were started at our Center in 2006:

- AUDIT-C as a Social Marker for Health Risks in VA Medical Outpatients (IAC 05-206), Katharine Bradley, MD MPH
- Alcohol Misuse and the Risk of Post-Surgical Complications and Mortality (IAC 06-021), Katharine Bradley, MD MPH
- Dual Use, Continuity of Care and Duplication in VA and Medicare (IIR 04-292), Chuan-Fen Liu, PhD
- Impact of the DoD Paradigm Shift on VA Amputee Prosthetic Care (IIR 05-244), Gayle Reiber, MPH PhD
- The Hearing Aid Effectiveness After Aural Rehabilitation (HEAR) Trial (SLI 04-265), Bevan Yueh, MD
- Bronchitis and Emphysema Advice and Training to Reduce Hospitalization (BREATH) (CSP 560), Vincent Fan, MD MPH
- Diabetic Foot Ulcer Treatment and Amputation Prevention in Non-Tertiary VA Care Facilities (RR&D 04485-R), Gayle Reiber, MPH PhD
- Emergency Department Quality Improvement Technical Assistance Project (OQP Special Project), Stephan Fihn, MD MPH

### **5 Research Products and Dissemination**

During the reporting period, Center investigators and trainees published 78 peer-reviewed articles including publications in the American Journal of Medicine, Medical Care, American Journal of Epidemiology, and the Journal of General Internal Medicine. Investigators made 130 presentations at national and international conferences. We also revised our Center web page to meet new VA guidelines and to make our proposal preparation, data security and human subjects support tools available to a wider audience <http://www1.va.gov/pshsrd>.

### **6 Key Impacts**

#### **Publications**

**Differences in health care utilization at the end of life among patients with chronic obstructive pulmonary disease and patients with lung cancer; Au DH, Udris EM, Fihn SD, McDonell MB, Curtis JR; IIR 99-376; RCD 00-018**

**The prevalence and outcomes of in-hospital acute myocardial infarction in the Department of Veterans Affairs Health System; Maynard C, Lowy E, Rumsfeld J, Sales AE, Sun H, Kopjar B, Fleming B, Jesse RL, Rusch R, Fihn SD; IHD 98-001; MRC 03-334**

## System Improvements

### **DEPRESSION - Research findings that support collaborative care for depression have been widely accepted within VHA.**

Working in close collaboration with other investigators throughout VA, Dr. Edmund Chaney has helped lead efforts to develop improved approaches to caring for depression and enhancing adoption of these methods system-wide. The model of collaborative care they have developed through a series of HSR&D-funded studies is presently being implemented in a number of VA sites. The "Expanding and Testing VA Collaborative Care Models for Depression (ReTIDES)" study is seeking to determine the optimal methods to implement collaborative care for depression in a variety of VA settings. Since its initiation, the ReTIDES study has fostered the continuation of the "Value and Cost of Translating Collaborative Care Models for Depression" (TIDES) model of collaborative care for depression in the three original partner VISNs and has spread to two additional VISNs. Currently there are a total of 18 active Depression Care Managers (DCM) who are working with approximately 1500-2000 patients. ReTIDES continues to assist in the training and support of the DCMs and their associated sites. The development and refinement of informatics tools to support collaborative care (specifically to support DCM activities and provide information to participating sites on the intervention) is ongoing. A full set of tools that are functional within CPRS are now available. Additional support includes weekly conference calls for DCMs to discuss clinical issues and monthly calls to help set policy and develop procedures.

The Office of Patient Care Services has adopted collaborative care for depression as the standard of care and investigators from the ReTIDES study are assisting in the national clinical RFP process to improve collaboration among primary care and mental health in the treatment of depression and other mental health problems. In addition, three ReTIDES aims: 1) Complete cost-effectiveness analysis for collaborative care of depression, 2) Complete business case analysis for collaborative care of depression, and 3) Develop and test informatics tools to support collaborative care, have been incorporated in VA ORD's performance plan and are reported to OMB on a regular basis.

In a separate study, Dr. Chuan-Fen Liu and colleagues reported that in a study involving 3,559 VA primary care patients who had symptoms of depression (17% mild, 42% moderate, and 45% severe), 44% were neither diagnosed nor treated. Their results indicate that performance measures for depression that rely upon administrative data exclude undiagnosed patients with significant, treatable symptomatology.

#### References:

Liu C, Rubenstein L, Chaney E. Program Assessment Rating Tool (PART) of ReTIDES Cost-effectiveness and Business Case Review: Office of Management and Budget; 2006.

Rubenstein L, Chaney E. Program Assessment Rating Tool (PART) of TIDES Vista-based Information Technology Tool Package Design Review: Office of Management and Budget; 2006.

Chaney E, Rubenstein L. Improving Depression Treatment in Primary Care: Dissemination and Implementation. Academy Health Annual Research Meeting. Seattle, WA; 2006.

Liu CF; Campbell DG; Chaney EF; Li YF; McDonnell M; Fihn SD. Depression diagnosis and antidepressant treatment among depressed VA primary care patients. *Adm Policy Ment Health* 2006; 33(3): 331-341.

## **HEARING LOSS - Routine screening for hearing loss leads to long-term benefit in older veterans.**

In a randomized trial of different methods for detecting hearing loss entitled "Audiology Visits after Screening for Hearing Loss: An RCT" (IIR 99-377), Dr. Bevan Yueh and colleagues found that routine screening for hearing loss in the primary care setting not only leads to improved detection of hearing loss, but it identifies patients who are willing to seek treatment, receive treatment, and adhere to hearing aids. The finding that screening for hearing loss led to long-term benefit in older veterans has important implications for detection and treatment of hearing loss in veterans and for future research in addressing this problem.

### References:

Yueh B, Collins MP, Souza P, Heagerty P, Liu F, Loovis CF, Fausti S, Hedrick S. Long-term effectiveness in a randomized trial of hearing loss screening. Oral presentation at the American Auditory Society, Scottsdale, Arizona, 3/22/05. Am Aud Soc Bull 30:31, 2005.

Yueh, B., Collins, M. P., Souza, P. E., Boyko, E., Loovis, C. F., Heagerty, P., et al. (2006). Screening for Auditory Impairment-Which Hearing Assessment Test: RCT Design and Baseline Characteristics. Contemporary Clinical Trials (accepted), <http://dx.doi.org/10.1016/j.cct.2006.08.008>.

## **HEART DISEASE - New data about AMI care has improved quality of care within VHA.**

Working in close collaboration with the Offices of Patient Care Services, Quality and Performance, and Information, we have used data from the External Peer Review Program (EPRP) to evaluate the outcome of care for acute myocardial infarction in VHA. Our researchers were able to refute findings of an earlier study that demonstrated higher mortality following AMI among patients treated at VHA facilities versus comparable patients treated in Medicare-funded hospitals. The investigators found that, in contradistinction to the Medicare population, 12% of AMIs treated in VA Medical Centers occurred following admission to the hospital for an unrelated problem and that the in-hospital mortality of these patients was more than three-fold higher than for patients who were admitted specifically for AMI (27.3 vs. 8.6%). VHA is now undertaking quality improvement efforts to determine the full extent of in-hospital AMI and its etiologies (Drs. Fihn and Sales "Cardiac Care Follow-up Clinical Study" MRC 03-334).

Center investigators have carefully evaluated barriers to expeditious care for patients with AMI. Working with OQP and PCS, they have collected data showing that since start of FY04 to quarter 3 of FY06, median time to EKG at presentation dropped from 13 to 5 minutes, and overall AMI mortality declined from 9.9% to 8.5%. Overall in-hospital mortality was about 10.4%. In-hospital mortality of patients admitted from the community with AMI was 7.3% compared to 23.2% for patients admitted for other diagnoses who suffered an AMI during hospitalization ("Developing a Toolkit for Improving the Quality of Reperfusion for AMI Patients in VA" QLP 61-002).

In another study, Dr. Charles Maynard and colleagues studied 680 black and 3529 white veterans who were admitted to VA Medical Centers 2003-2004 and found that although equal proportions of blacks and whites underwent cardiac catheterization <30 days after admission, black patients were less likely to undergo PCI (32% vs. 40%,  $p < 0.0001$ ).

Using the EPRP database, investigators from the Center evaluated six risk adjustment models for AMI mortality and found that one of these, a model used by the Joint Commission on Accreditation of Healthcare Organizations (JCAHO) performed less well than the others, including an earlier JCAHO model. These data formed the basis of a letter from the Undersecretary for Health to JCAHO requesting that VA data be evaluated using the earlier model and this request was approved.

### References:

Maynard C, Lowy E, Rumsfeld J, Sales AE, H Sun, Kopjar B, Fleming B, Jesse RL, Rusch R, Fihn SD. The prevalence and outcomes of in-hospital acute myocardial infarction in the Department of Veterans Affairs Health system. *Arch Intern Med* 2006; 166(13):1410-1416.

Maynard C, Sun H, Lowy E, Sales AE, Fihn SD. The use of percutaneous coronary intervention in black and white veterans with acute myocardial infarction. *BMC Health Serv Res* 2006;6:107.



**SUBSTANCE ABUSE - Results of evidence-based screenings are being used to make national policy recommendations related to implementing appropriate follow-up for positive alcohol screening nationwide.**

VA implemented evidence-based screening for the spectrum of alcohol misuse in 2004. In an article published in October 2006 in the American Journal of Managed Care, Drs. Katharine Bradley and Daniel Kivlahan described the adoption and nationwide implementation of an alcohol misuse screening performance measure and present results of performance monitoring regarding alcohol screening and follow-up for the 21 VA networks through March 2005, comparing results based on medical record reviews and patient surveys. Based on review of 10,115 medical records 93% (range 89% - 96% across networks) of outpatients were screened for alcohol misuse and among those who screened positive, 42% (range 5-84%) had documented follow-up assessment. Based on 235,481 patient surveys, the prevalence of alcohol misuse was 22% (range 15-27% across VISNs) and 28% of screen-positive patients reported receiving alcohol-related advice. Report of advice increased as alcohol screening scores increased. Results from this study are being used to make national policy recommendations related to implementing appropriate follow-up for positive alcohol screening nationwide.

In a related study of 6419 primary care patients who reported alcohol misuse, Dr. Bradley found that, contrary to stereotypes of denial, most (75%) of these patients reported some readiness to change drinking and that patients with greater alcohol use severity were more likely to report readiness to change.

Dr. Charles Maynard's project "Cause of Death in Washington State Veterans" was one of the first to examine underlying cause of death as recorded in state death records in a large veteran population. A key finding was that veterans in Washington State who used VA health care were more likely to die from alcohol/drug induced causes than their veteran counterparts who did not use VA health care. This result underscores burden VA bears in caring for those with substance use disorders.

In his role as Clinical Coordinator of Substance Use Disorders QUERI, Dr. Daniel Kivlahan serves as the national sponsor for the performance measure that tracks continuity of care for specialty treatment of substance use disorders. This entailed substantial revision and validation of the measure for FY06. Retention rates have increased from below 30% in FY03 to 36+% in FY06. Ongoing consultation with the field includes national conference calls, presentations to VISN leadership and frequent contact from program leaders. Dr. Kivlahan also serves as the representative of ORD on the VA workgroup overseeing the GPRA-mandated external evaluation of VA Mental Health Services. The revised statement of work and contractor selection process was completed in FY06 with the project kickoff meeting in September. The project has three planned phases extending over 3-4 years at an initial cost of ~\$8.5M.

References:

Bradley K, Williams E, Achtmeyer C, Volpp B, Collins B, Kivlahan D. Implementation of evidence-based alcohol screening in the Veterans Health Administration. Am J Manag Care 2006, 12(10):597-606.

Maynard C, Boyko EJ. Differences in cause of death between Washington State veterans who did and did not use VA health care services. J Rehab Res Dev, in press.

## **7 Key Services**

### **HSR&D**

## **HSR&D Computer Network, Data Security and Data Extraction.**

The Center provides shared computer network support to over 120 VA investigators, fellows, and project staff. Support includes access to common data storage drives, high-speed shared printers, and HSR&D-supported software. HSR&D computers also have access to all hospital resources such as Internet/Intranet connectivity, VistA patient information, CPRS, remote dial-in, VA e-mail, and VISN data storage resources. Our data manager, Jeff Todd-Stenberg, has developed and maintains a comprehensive data security policy and training program. It includes local data security policies and practices specifically oriented towards the conduct of research at our Center, with focus on recognition and protections of human subject identifiable data, storage of protected health information (PHI) on the VA network; and policies regarding PHI data sharing, data use and business associate agreements. The procedures, policies, and training program have been adopted by other local and national CoEs, Service Lines, and Medical Centers.

Jeff has developed VA Fileman templates and SmarTerm macro programs that are tailored for cohort-specific VISTA data extractions. These templates and macros have been used at other HSR&D CoEs and Medical Centers in multi-site studies nationally. In addition, he developed the SAS programs for the RxRisk-V risk adjustment tool and has made them available nationally upon request to both VA and non-VA users. Through his work on the national implementation of the Geriatrics and Extended Care project, Jeff has provided valuable input into the design and evaluation of the GEC templates, standard reports, and processes. He has also been on the cutting edge of managing multi-terabyte SQL server data bases in support of national research projects.

## **HSR&D Research Review Committee.**

The Research Review Committee for the Center provides scientific review of HSR&D-related proposals to insure that high quality proposals are submitted by VA investigators and thereby improve the likelihood of funding and impact on care. The Research Review Committee reviews all HSR&D-related proposals for any funding source, as well as Career Development and Scientist Award applications, unfunded research projects, and Final Reports. The committee consists of Center core investigators, HSR&D Postdoctoral Fellows, other VAPSHCS investigators, faculty in several schools (Medicine, Public Health, Pharmacy, Nursing) at the University of Washington, and individuals from other health care research organizations located in Seattle (Center for Health Studies at Group Health Cooperative of Puget Sound and Fred Hutchinson Cancer Research Center).

## **Other VA/ORD**

### **Cardiac Assessment Reporting and Tracking System for Cardiac Catheterization Laboratories (CART-CL).**

Dr. Stephan Fihn serves as the Director of the Cardiac Assessment, Reporting and Tracking System for Cardiac Catheterization Laboratories (CART-CL) which is the national VA data repository and reporting system for patients who undergo procedures in VA cardiac catheterization laboratories. Under a national mandate, CART-CL is being installed in all VA hospitals catheterization labs and should be fully deployed by end of 2006 allowing national workload capture and participation by all VA catheterization labs in the American College of Cardiology National Cardiovascular Data Registry quality improvement program. Over 30,000 assessment and procedure reports have been generated on over 16,000 patients since January, 2005.

## **Annual Report Template (ART) Development.**

The Annual Report Template is an automated reporting system that gathers, tracks, and organizes personnel, funding, and project data from VA HSR&D Centers and all ORD clinical trials. Management of the program includes technical development, database management, field training and support, quality control, and reporting. The end products include HSR&D Center Annual Reports, Quarterly Matrix Reports, CIDER citation updates and National Library of Medicine clinical trial updates. All of these reports are used by ORD in preparing reports to Congress.

ART was restructured in 2006 to operate with only one record for personnel, project, and citation. This change enables many new functions including the ability to store historical funding information in the current funding records. A new application was added to the ART Website to track and process HSR&D Intent to Submit documents and Submission Review letters. It is accessible to over 200 users nationwide allowing individual Center and project level data entry while providing VACO with a centralized quality-reporting tool.

## **VA Statisticians' Association (VASA).**

Dr. Andrew Zhou, Senior Biostatistician and Director, Biostatistics at the Center created the VASA to help promote and disseminate statistical methodological research relevant to VA studies, facilitate communication among VA-affiliated statisticians, and increase participation of VA statisticians at national meetings and in VA research merit review. Membership is open to all VA-affiliated statisticians and currently has about 50 members. VASA has highlighted VA research activities at national events, most recently hosting a session on "Statistical Issues in Veterans' Administration (VA) Health Services Research" at the 2006 Joint Statistical Meeting in Seattle. Upcoming events include sessions at the 2007 HSR&D National Meeting, 2007 Joint Statistical meeting, and the 2008 International Conference on Health Policy Research.

## **National (non-VA)**

### **8 National and Regional Leadership Roles**

Center investigators continue to influence health research and policy through leadership and service to a wide range of national organizations including the American College of Physicians, Association of American Medical Colleges, National Committee for Quality Assurance, National Center of Health Statistics, National Institutes of Health, American Diabetes Association, American Statistical Association, Society of General Internal Medicine, American College of Surgeons, American Academy of Otolaryngology, American Thoracic Society, American Heart Association, Academy Health, and Society of Medical Decision Making.

Dr. Stephan Fihn is a member of the FRAC, the Blue Ribbon Panel on Academic Affiliations recently established by Secretary Nicholson, and the Advisory Panel on Research of the American Association of Medical Colleges, among others.

Dr. Daniel Kivlahan is a member of the Steering Committee for the National Quality Forum consensus that seeks to achieve national consensus on an identified set of effective practices for the treatment of a range of substance use conditions across the continuum of care ([http://www.qualityforum.org/projects/completed/substance\\_abuse.asp](http://www.qualityforum.org/projects/completed/substance_abuse.asp)).

Investigators also provide services to a large variety of VA review panels, quality forums, external advisory boards, committees, and task forces. We will continue to provide leadership in the field and provide information nationally and internationally to ensure that lessons learned in VA can be applied to problems in the larger health care system.

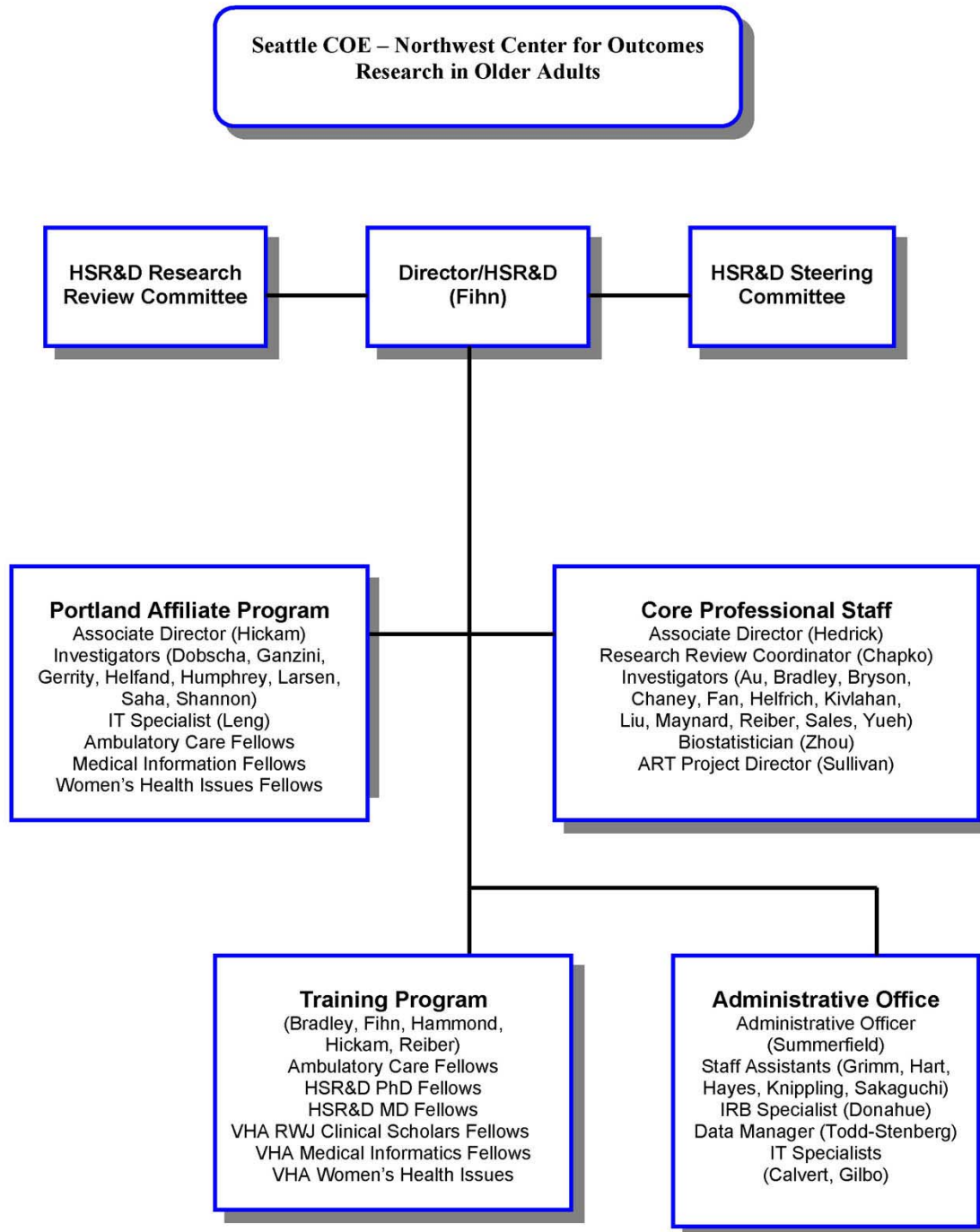
### **9 Training Activities**

## • Training Activities

The training of postdoctoral MD and PhD fellows in Health Services Research remains a central mission with multiple successful training programs. During 2006, over 25 fellows were supported in the ten HSR&D, Ambulatory Care, Medical Informatics, Women's Health postdoctoral MD and PhD fellowship programs at the Seattle and Portland VA Medical Centers. This was the last year of the Robert Wood Johnson Fellowship Program in Seattle. We were able to transition the remaining VA-RWJ fellow, Judy Zerzan, into our regular HSR&D Fellowship Program.

Our investigators remain active in teaching in the Schools of Medicine and Public Health at the University of Washington and the Oregon Health and Science University, serving as course directors and on thesis and dissertation committees. The training program for physicians has been particularly successful. To date, the Center has sponsored training for over 130 post-MD fellows of whom 75% have assumed academic positions. We will continue to help meet the need for well trained health services researchers in VA and elsewhere by continued focus on our teaching and fellowship programs.

## 2.1 Organizational Chart



## 2.2 Investigators (Table 1)

### Seattle Center of Excellence Investigators (Core and Affiliate), FY 2006

	Degree(s)	Center Title(s)	Other VA Title(s)	University Title(s)	Year Joined FP	HSRD FTE*	VA Appt
<b>Director, Research Center(s)</b>							
<b>Stephan D. Fihn</b>	MD, MPH	Director Core Investigator Co-Director, Seattle VA Ambulatory Care and HSR&D Fellowship Programs	Staff Physician	Head, Division of General Internal Medicine, University of Washington Professor, Departments of Medicine and Health Services, UW		0.500	1.000
		DRA(s):	Chronic Diseases; Health Services and Systems				
		DRE(s):	Diagnosis and Prognosis; Epidemiology; Quality of Care; Resource Use and Cost				
		INTERESTS:	Ambulatory Care; Health Services Research				

\* FTE refers to percentage of Center time devoted to HSRD

### Associate Director, Research Center(s)

<b>Susan C. Hedrick</b>	PhD	Associate Director Research Career Scientist Core Investigator		Professor, Department of Health Services		1.000	1.000
		DRA(s):	Aging and Age-Related Changes; Health Services and Systems				
		DRE(s):	Resource Use and Cost; Treatment				
		INTERESTS:	Chronic Disease; Frail Elderly; Long-Term Care				

\* FTE refers to percentage of Center time devoted to HSRD

**Seattle Center of Excellence Investigators (Core and Affiliate), FY 2006**

	Degree(s)	Center Title(s)	Other VA Title(s)	University Title(s)	Year Joined FP	HSRD FTE*	VA Appt
<b>Core Investigator(s)</b>							
<b>David H. Au</b>	MD, MS	Research Career Development Awardee Core Investigator	Staff Physician, Pulmonary and Critical Care Medicine	Adjunct Assistant Professor, Department of Pharmacy, Pharmaceutical Outcomes Research and Policy Program Assistant Professor of Medicine, Division of Pulmonary and Critical Care		0.750	1.000
		DRA(s):	Chronic Diseases				
		DRE(s):	Diagnosis and Prognosis; Prevention; Treatment				
		INTERESTS:	Cancer; Cancer - Surveillance and Treatment Outcome; Cancer Control; Cancer Prevention and Control; Chronic Obstructive Pulmonary Disease (COPD); Epidemiology; Health Services Research; Outcome Assessment (Health Care); Quality Assurance, Health Care - Quality of Health Care; Treatment Outcome				
<b>Katharine A. Bradley</b>	MD, MPH	Co-Director, HSR&D Ambulatory Care Fellowship Program Core Investigator	Investigator, VA COE, Substance Abuse Treatment & Education (CESATE) Member, Resource Group, Epidemiologic Research and Information Center	Adjunct Associate Professor, Department of Health Services Associate Professor of Medicine		0.625	0.750
		DRA(s):	Health Services and Systems; Substance Abuse, Addictive Disorders				
		DRE(s):	Diagnosis and Prognosis; Prevention				
		INTERESTS:	Alcohol Problems in Primary Care; Alcoholism; Substance Abuse Treatment				
<b>Christopher L. Bryson</b>	MD, MS	Research Career Development Awardee Core Investigator	Staff Physician	Acting Instructor, Division of General Internal Medicine		0.750	1.000
		DRA(s):	Chronic Diseases				
		DRE(s):	Diagnosis and Prognosis; Quality of Care; Treatment				
		INTERESTS:	Clinical Epidemiology; Outcome Assessment (Health Care); Pharmacoepidemiology and Adverse Drug Events; Prognosis				

## Seattle Center of Excellence Investigators (Core and Affiliate), FY 2006

	Degree(s)	Center Title(s)	Other VA Title(s)	University Title(s)	Year Joined FP	HSRD FTE*	VA Appt
<b>Edmund F. Chaney</b>	PhD	Core Investigator	Clinical Psychologist, Mental Health Service Member, Primary Care/Post Traumatic Stress Clinic Liaison Service	Associate Professor, Department of Psychiatry and Behavioral Sciences		0.500	1.000
		DRA(s):	Chronic Diseases; Mental Illness				
		DRE(s):	Treatment; Technology Development and Assessment				
		INTERESTS:	Depression in Primary Care; Health Care Information Systems				
<b>Michael K. Chapko</b>	PhD	Research Review Coordinator Core Investigator	Associate Director, NW Hepatitis C Resource Center Coordinator, Data Management, Epidemiologic Research and Information Center (ERIC)	Member, Social and Behavioral Sciences Program, International Health Program, School of Public Health Research Professor, Department of Health Services		1.000	1.000
		DRA(s):	Chronic Diseases; Health Services and Systems				
		DRE(s):	Communication and Decision Making; Quality of Care; Resource Use and Cost; Technology Development and Assessment				
		INTERESTS:	Ambulatory Care; Cost-Benefit Analysis; Decision Support Techniques; Multicenter Study				
<b>Steven K. Dobscha</b>	MD	Research Career Development Awardee, Portland Affiliate Core Investigator, Portland	Consult Psychiatrist, General Medicine Psychiatry Program Staff Psychiatrist, Portland VAMC	Associate Professor, Department of Psychiatry		0.750	1.000
		DRA(s):	Health Services and Systems; Mental Illness; Special (Underserved, High Risk) Populations; Chronic Diseases				
		DRE(s):	Communication and Decision Making; Epidemiology; Treatment; Quality of Care; Resource Use and Cost				
		INTERESTS:	Alcohol Problems in Primary Care; Decision Support Techniques; Delivery of Health Care, Integrated; Depression in Primary Care; Education; Health Services Research; Outcome Assessment (Health Care); Pain; Treatment Outcome				



## Seattle Center of Excellence Investigators (Core and Affiliate), FY 2006

	Degree(s)	Center Title(s)	Other VA Title(s)	University Title(s)	Year Joined FP	HSRD FTE*	VA Appt
<b>Vincent S. Fan</b>	MD, MPH	Research Career Development Awardee Core Investigator	Staff Physician	Assistant Professor, Pulmonary and Critical Care		0.750	1.000
		DRA(s):	Chronic Diseases; Health Services and Systems				
		DRE(s):	Diagnosis and Prognosis; Epidemiology; Etiology; Prevention; Quality of Care; Treatment; Resource Use and Cost				
		INTERESTS:	Behavioral Change; Chronic Obstructive Pulmonary Disease (COPD); Clinical Outcomes Prediction Tools; Continuity and Quality of Care; Health Outcomes; Health Related Quality of Life; Health Services Research; Patient Education; Quality of Care				
<b>Linda K. Ganzini</b>	MD, MPH	Core Investigator, Portland Affiliate	Director, Geriatric Psychiatry Fellowship Program, PVAMC Director, Interprofessional Fellowship Program in Palliative Care Staff Psychiatrist, Consult-Liaison Psychiatry Service and Outpatient Mental Health	Director, Division of Geriatric Psychiatry, OSHU Professor, Medicine, OHSU Professor, Psychiatry, OHSU Senior Scholar, Center on Ethics in Health Care, OHSU		0.500	1.000
		DRA(s):	Mental Illness				
		DRE(s):	Treatment				
		INTERESTS:	Cancer; Clinical Trials; Hospice Care				
<b>Martha S. Gerrity</b>	MD, MPH, PhD	Core Investigator, Portland Affiliate	Deputy Chief, Division of Hospital and Specialty Medicine Staff Physician, Section of General Medicine, Portland VAMC	Professor, Department of Medicine, Oregon Health & Science University		0.500	1.000
		DRA(s):	Health Services and Systems; Mental Illness; Chronic Diseases				
		DRE(s):	Communication and Decision Making; Quality of Care				
		INTERESTS:	Chronic Disease; Depression in Primary Care; Education; Evidence-Based Medicine; Health Services Research; Pain; Physician Practice Patterns; Psychometrics; Teaching				

## Seattle Center of Excellence Investigators (Core and Affiliate), FY 2006

	Degree(s)	Center Title(s)	Other VA Title(s)	University Title(s)	Year Joined FP	HSRD FTE*	VA Appt	
<b>Mark Helfand</b>	MD, MPH, MS	Associate Investigator (Portland Affiliate)	Staff Physician, Division of Hospital and Specialty Medicine, Portland VAMC	Director, Oregon Evidence-Based Practice Center, Oregon Health & Science University Professor, Medicine and Medical Informatics & Clinical Epidemiology Senior Investigator, Kaiser Center for Health Research, Portland		0.860	1.000	
		DRA(s): Health Services and Systems						
		DRE(s): Communication and Decision Making; Technology Development and Assessment						
		INTERESTS: Cost-Effectiveness of Primary Care; Evidence-Based Medicine; Practice Guidelines						
<b>Christian D. Helfrich</b>	PhD, MPH	Core Investigator Research Colloquium Coordinator Implementation Research Coordinator, IHD QuERI		Research Associate, Department of Health Services, School of Public Health		1.000	1.000	
<b>David H. Hickam</b>	MD, MPH	Associate Director, COE, Portland Affiliate Director, Ambulatory Care and Medical Informatics Fellowships Core Investigator	Chairperson, Drug Seeking Behavior Committee Member, Clinical Practices and Standards Committee Staff Physician, Division of Hospital and Specialty Medicine	Chairperson, Promotion and Tenure Committee, Department of Medical Informatics and Clinical Epidemiology Director, Center for Clinical Information Analysis and Decision Support Member, University Grievance Panel Professor, Departments of Medicine, Public Health & Preventive Medicine, and Medical Informatics & Clinical Epidemiology		0.500	1.000	
		DRA(s): Chronic Diseases; Health Services and Systems						
		DRE(s): Communication and Decision Making; Technology Development and Assessment						
		INTERESTS: Clinical Decision-Making; Outcome (Patient) Preferences; Patient Outcomes; Physician-Patient Relations						

## Seattle Center of Excellence Investigators (Core and Affiliate), FY 2006

	Degree(s)	Center Title(s)	Other VA Title(s)	University Title(s)	Year Joined FP	HSRD FTE*	VA Appt
<b>Linda L. Humphrey</b>	MD, MPH	Core Investigator, Portland Affiliate	Director, Veterans Affairs Fellowship in Women's Health Staff Physician, Section of General Internal Medicine	Associate Professor, Departments of Medicine, Medical Informatics & Clinical Epidemiology Core Scientist, Department of Medical Informatics and Clinical Epidemiology		0.500	1.000
		DRA(s):	Chronic Diseases; Health Services and Systems				
		DRE(s):	Diagnosis and Prognosis; Prevention; Quality of Care				
		INTERESTS:	Cancer; Cancer Control; Cancer Prevention and Control; Chronic Disease; Chronic Disease Epidemiology; Chronic Illness; Clinical Epidemiology				
<b>Daniel R. Kivlahan</b>	PhD	Chair, Research Review Committee Core Investigator	Director, Center of Excellence in Substance Abuse Treatment and Education (CESATE) Staff Psychologist	Adjunct Associate Professor, Addictive Behaviors Research Center, Department of Psychology Associate Professor, Department of Psychiatry and Behavioral Sciences		0.600	1.000
		DRA(s):	Mental Illness; Substance Abuse, Addictive Disorders				
		DRE(s):	Diagnosis and Prognosis; Epidemiology; Prevention; Treatment; Quality of Care				
		INTERESTS:	Alcohol Problems in Primary Care; Clinical Trials; Continuity and Quality of Care; Diagnosis, Dual (Psychiatry); Health Services Research; Hepatitis C; Post Traumatic Stress Syndrome; Practice Guidelines; Primary Care for Substance Abusing Patients; Substance Abuse Treatment				
<b>Greg C. Larsen</b>	MD	Core Investigator, Portland Affiliate	Chief, Cardiology Section Director, Cardiac Catheterization Laboratory Staff Cardiologist	Associate Professor of Medicine, Oregon Health & Science University		0.500	1.000
		DRA(s):	Chronic Diseases				
		DRE(s):	Communication and Decision Making				
		INTERESTS:	Cardiology				
<b>Chuan-Fen Liu</b>	MPH, PhD	Core Investigator/Economist		Research Assistant Professor, Department of Health Services		1.000	1.000
		DRA(s):	Health Services and Systems; Mental Illness				
		DRE(s):	Resource Use and Cost				
		INTERESTS:	Cost-Effectiveness Analysis; Depression in Primary Care; Health Care Policy; Health Services Research; Program Analysis and Evaluation; Resource Use and Cost of VA Care; Risk Adjustment				

## Seattle Center of Excellence Investigators (Core and Affiliate), FY 2006

	Degree(s)	Center Title(s)	Other VA Title(s)	University Title(s)	Year Joined FP	HSRD FTE*	VA Appt
<b>Matthew L. Maciejewski</b>	PhD	Investigator				1.000	0.625
<b>** Left Center In 2006</b>							
		DRA(s):	Chronic Diseases; Health Services and Systems; Special (Underserved, High Risk) Populations				
		DRE(s):	Prevention; Quality of Care; Resource Use and Cost; Technology Development and Assessment				
		INTERESTS:	Diabetes Mellitus; Health Care Costs and Cost Analysis; Managed Care Programs; Outcome Assessment (Health Care); Patient Selection				
<b>Charles C. Maynard</b>	PhD, MSW	Core Investigator HSR&D Database Analysis Coordinator		Research Professor, Department of Health Services		0.625	IPA
		DRA(s):	Chronic Diseases; Substance Abuse, Addictive Disorders				
		DRE(s):	Epidemiology; Treatment				
		INTERESTS:	Statistical Methodology				
<b>Gayle E. Reiber</b>	MPH, PhD	Research Career Scientist Director, Postdoctoral PhD Training Program Core Investigator	Core Investigator, Seattle Center of Excellence for Limb Loss, Prevention and Prosthetics Engineering	Professor, Departments of Health Services and Epidemiology		1.000	1.000
		DRA(s):	Chronic Diseases; Health Services and Systems; Sensory Disorders and Loss; Special (Underserved, High Risk) Populations				
		DRE(s):	Epidemiology; Prevention; Rehabilitation; Resource Use and Cost; Technology Development and Assessment; Treatment				
		INTERESTS:	Diabetes Mellitus; Lower Extremity Amputation; Managed Care Programs				
<b>Somnath Saha</b>	MD, MPH	Advanced Research Career Development Awardee, Portland Affiliate Core Investigator (Portland Affiliate)	Member, Research and Development Committee, PVAMC Staff Physician, Division of Hospital and Specialty Medicine	Associate Professor of Medicine, Medical Informatics & Clinical Epidemiology and Public Health & Preventive Medicine		0.750	1.000
		DRA(s):	Health Services and Systems; Special (Underserved, High Risk) Populations				
		DRE(s):	Communication and Decision Making; Quality of Care				
		INTERESTS:	Cultural Diversity; Minority Groups; Patient Acceptance of Health Care; Professional-Patient Relations; Racial Differences in Care				

## Seattle Center of Excellence Investigators (Core and Affiliate), FY 2006

	Degree(s)	Center Title(s)	Other VA Title(s)	University Title(s)	Year Joined FP	HSRD FTE*	VA Appt
<b>Anne E. Sales</b>	PhD, MSN, RN	Core Investigator		Adjunct Associate Professor, Department of Biobehavioral Nursing and Health System Associate Professor, Department of Health Services		1.000	1.000
		DRA(s):	Chronic Diseases; Health Services and Systems; Aging and Age-Related Changes				
		DRE(s):	Quality of Care; Resource Use and Cost; Communication and Decision Making; Treatment				
		INTERESTS:	Anthropology; Best Practices; Cardiology; Clinical Competence; Continuity and Quality of Care; Cost-Benefit Analysis; Health Care Costs and Cost Analysis; Nursing; Organizational Innovation; Personnel Staffing and Scheduling; Quality Management				
<b>Jackilen Shannon</b>	PhD, MPH	Core Investigator and Research Scientist, Portland Affiliate		Assistant Professor, Department of Endocrinology, School of Medicine Assistant Professor, Public Health and Preventive Medicine, Oregon Health & Science University Research Scientist, Center for Research on Occupational and Environmental Toxicology		0.650	1.000
		DRA(s):	Chronic Diseases				
		DRE(s):	Epidemiology				
		INTERESTS:	Cancer; Prevention				
<b>Bevan Yueh</b>	MD, MPH	Core Investigator	Chief, Otolaryngology Service Staff Surgeon	Adjunct Associate Professor, Department of Health Services Affiliate Faculty, Center for Cost and Outcomes Research Director, Outcomes Research Unit, Department of Otolaryngology Professor, Department of Otolaryngology/Head & Neck Surgery		0.750	1.000
		DRA(s):	Aging and Age-Related Changes; Sensory Disorders and Loss				
		DRE(s):	Diagnosis and Prognosis; Resource Use and Cost; Rehabilitation				
		INTERESTS:	Cancer; Neoplasms; Otolaryngologic Disorders				

## Seattle Center of Excellence Investigators (Core and Affiliate), FY 2006

	Degree(s)	Center Title(s)	Other VA Title(s)	University Title(s)	Year Joined FP	HSRD FTE*	VA Appt
<b>Xiao-Hua Andrew Zhou</b>	PhD, MSc	Core Investigator/Senior Biostatistician Director, Biostatistics Unit		Adjunct Professor, Department of Psychiatry and Behavioral Sciences Professor, Departments of Biostatistics and Public Health and Community Medicine		0.650	0.750
		DRA(s):	Aging and Age-Related Changes; Chronic Diseases; Health Services and Systems; Mental Illness; Substance Abuse, Addictive Disorders				
		DRE(s):	Diagnosis and Prognosis; Epidemiology; Quality of Care; Resource Use and Cost; Technology Development and Assessment				
		INTERESTS:	Biostatistics; Clinical Trials; Epidemiology; Health Care Costs and Cost Analysis; Outcome Assessment (Health Care); Research Design; Sample Size				

---

\* FTE refers to percentage of Center time devoted to HSRD

---

**Seattle Center of Excellence Investigators (Core and Affiliate), FY 2006**

	Degree(s)	Center Title(s)	Other VA Title(s)	University Title(s)	Year Joined FP	HSRD FTE*	VA Appt
<b>Affiliate Investigator(s)</b>							
<b>Charles D. Blanke</b>	MD	Affiliate Investigator, Portland Affiliate	Staff Physician	Associate Professor, Division of Hematology and Medical Oncology Director, Oregon Health and Science University Cancer Institute Dsolid Tumkor Oncology Program		0.100	1.000
		DRA(s): Chronic Diseases					
		DRE(s): Diagnosis and Prognosis; Quality of Care; Treatment					
		INTERESTS: Cancer Prevention and Control; Gastrointestinal Diseases					
<b>Edward J. Boyko</b>	MD, MPH	Affiliate Investigator	Chief, General Internal Medicine Section Director, Seattle Epidemiologic Research & Information Center (ERIC) Director, Vietnam Era Twin Registry (VETR), Department of Veterans Affairs Staff Physician	Adjunct Professor, Departments of Epidemiology and Health Services Professor, Department of Medicine		0.500	1.000
		DRA(s): Chronic Diseases					
		DRE(s): Epidemiology					
		INTERESTS: Diabetic Neuropathy; Lower Extremity Amputation					
<b>Paula K. Diehr</b>	PhD	Affiliate Investigator Chair, HSR&D CoE Steering Committee		Member, Fred Hutchinson Cancer Research Center Professor, Departments of Biostatistics and Health Services		0.100	IPA
		DRA(s): Aging and Age-Related Changes; Health Services and Systems					
		DRE(s): Quality of Care; Resource Use and Cost					
		INTERESTS: Health Care Costs and Cost Analysis					
<b>James M. Edwards</b>	MD	Affiliate Investigator	Chief of Surgery			0.050	1.000

## Seattle Center of Excellence Investigators (Core and Affiliate), FY 2006

	Degree(s)	Center Title(s)	Other VA Title(s)	University Title(s)	Year Joined FP	HSRD FTE*	VA Appt
<b>Barry Goldstein</b>	MD, PhD	Affiliate Investigator	Associate Chief Consultant, Spinal Cord Injury and Disorders Healthcare Group Attending Physician, Spinal Cord Injury Service	Associate Medical Staff, Department of Rehabilitation Medicine, University of Washington Associate Professor, Department of Rehabilitation Medicine Attending Physician, Department of Rehabilitation Medicine, Harborview Medical Center		0.200	1.000
		DRA(s):	Acute and Traumatic Injury; Aging and Age-Related Changes; Chronic Diseases; Special (Underserved, High Risk) Populations				
		DRE(s):	Rehabilitation; Prevention; Quality of Care				
		INTERESTS:	Adult Immunizations; Aging; Behavior; Functional Status; Health Behavior; Obesity; Pain; SCI; Spinal Cord Injury and Rehabilitation				
<b>Kenric W. Hammond</b>	MD	Director, Medical Informatics Postdoctoral Fellowship Affiliate Investigator	Staff Psychiatrist, Mental Health Clinic, American Lake Division	Joint Clinical Associate Professor, Division of Biomedical Informatics, Medical Education and Department of Psychiatry and Behavioral Sciences		0.200	1.000
		DRA(s):	Mental Illness; Health Services and Systems				
		DRE(s):	Resource Use and Cost; Quality of Care				
		INTERESTS:	Information Services/MT				
<b>Margaret C. Hammond</b>	MD	Chief Consultant, Spinal Cord Injury and Disorders Strategic Healthcare Group Affiliate Investigator	Chief, Spinal Cord Injury Service Physiatrist and Staff Physician	Graduate Faculty, Department of Rehabilitation Medicine Professor, Department of Rehabilitation Medicine		0.100	1.000
		DRA(s):	Acute and Traumatic Injury; Chronic Diseases; Special (Underserved, High Risk) Populations				
		DRE(s):	Rehabilitation; Treatment				
		INTERESTS:	Spinal Cord Injury and Rehabilitation				
<b>Richard J. Harper</b>	MD	Affiliate Investigator, Portland Affiliate	Chief, Emergency Room			0.050	1.000



## Seattle Center of Excellence Investigators (Core and Affiliate), FY 2006

	Degree(s)	Center Title(s)	Other VA Title(s)	University Title(s)	Year Joined FP	HSRD FTE*	VA Appt
<b>Karin M. Nelson</b>	MD, MSHS	Affiliate Investigator	Staff Physician, General Internal Medicine	Assistant Professor, Department of Medicine		0.100	1.000
		DRA(s):	Chronic Diseases; Health Services and Systems				
		DRE(s):	Epidemiology; Prevention				
		INTERESTS:	Behavior and Behavioral Mechanisms; Chronic Disease; Diabetes Mellitus; Health Care Policy; Health Services Research; Knowledge, Attitudes, Practice; Self Care				
<b>Andrew J. Saxon</b>	MD	Affiliate Investigator	Director, Addictions Patient Care Line, Mental Health Service Staff Psychiatrist, Alcohol and Drug Dependency Treatment Programs	Professor, Department of Psychiatry & Behavioral Sciences		0.200	1.000
		DRA(s):	Mental Illness; Substance Abuse, Addictive Disorders				
		DRE(s):	Treatment				
		INTERESTS:	Primary Care for Substance Abusing Patients				

## Seattle Center of Excellence Investigators (Core and Affiliate), FY 2006

	Degree(s)	Center Title(s)	Other VA Title(s)	University Title(s)	Year Joined FP	HSRD FTE*	VA Appt
<b>Kevin L. Sloan</b>	MD	Affiliate Investigator	Advisory Board Member, VA Multiple Sclerosis Center of Excellence (West) Chief, Dual Disorders Program, Addictions Treatment Center, Mental Health Service Core Investigator, Epidemiologic Research and Information Center (ERIC) Core Investigator, Northwest Hepatitis C Field Based Resource Center (HCRC) Core Investigator, Seattle Center for Excellence for Substance Abuse, Treatment and Education (CESATE)	Associate Professor, Department of Psychiatry and Behavioral Sciences		0.050	1.000
			DRA(s): Health Services and Systems; Mental Illness; Special (Underserved, High Risk) Populations; Substance Abuse, Addictive Disorders				
			DRE(s): Resource Use and Cost; Quality of Care; Communication and Decision Making				
			INTERESTS: Comorbidity; Hierarchical Statistical Models; Practice Patterns; Risk Adjustment				
<b>Bonnie G. Steele</b>	PhD, RN	Affiliate Investigator	Respiratory Clinical Nurse Specialist	Clinical Assistant Professor, Department of Biobehavioral Nursing and Health Care Systems		0.250	1.000
			DRA(s): Chronic Diseases				
			DRE(s): Quality of Care; Rehabilitation; Technology Development and Assessment				
			INTERESTS: Chronic Obstructive Pulmonary Disease (COPD); Smoking Cessation				
<b>Andre M. Tapp</b>	MD	Affiliate Investigator, American Lake	Deputy ACOS for Mental Health Psychiatrist, Mental Health Clinic			0.050	1.000

\* FTE refers to percentage of Center time devoted to HSRD

**Seattle Center of Excellence Investigators (Core and Affiliate), FY 2006**

	Degree(s)	Center Title(s)	Other VA Title(s)	University Title(s)	Year Joined FP	HSRD FTE*	VA Appt
<b>Associate Investigator(s)</b>							
<b>Bradley D. Anawalt</b>	MD, BS	Associate Investigator	Assistant Chief of Medicine Staff Physician, General Internal Medicine and Endocrinology	Associate Professor, University of Washington Associate Residency Program Director, University of Washington		0.100	1.000
<b>Jason A. Dominitz</b>	MD, MHS	Associate Investigator	Core Investigator, Epidemiologic Research and Information Center Director, Northwest Hepatitis C Resource Center Staff Physician, Gastroenterology Division	Affiliate Investigator, Division of Clinical Research, Fred Hutchinson Cancer Research Center Assistant Chief for Academic Affairs, Division of Gastroenterology Associate Professor of Medicine		0.200	1.000
			DRA(s):	Chronic Diseases; Health Services and Systems; Special (Underserved, High Risk) Populations			
			DRE(s):	Epidemiology; Prevention; Quality of Care; Treatment			
			INTERESTS:	Cancer; Epidemiology; Evidence-Based Medicine; Gastrointestinal Diseases; Hepatitis C; Liver Diseases; Practice Guidelines			
<b>Cynthia M. Dougherty</b>	PhD, RN	Associate Investigator				0.100	1.000
<b>Jodie K. Haselkorn</b>	MD, MPH	Associate Investigator	Attending Physician Director, Multiple Sclerosis Center of Excellence West	Associate Faculty, Medical History and Bioethics, University of Washington Associate Professor, Department of Rehabilitation Medicine		0.050	1.000
			DRA(s):	Acute and Traumatic Injury			
			DRE(s):	Rehabilitation			
<b>Yu-Fang Li</b>	PhD	Project Coordinator Associate Investigator Research Health Science Specialist				1.000	1.000

## Seattle Center of Excellence Investigators (Core and Affiliate), FY 2006

	Degree(s)	Center Title(s)	Other VA Title(s)	University Title(s)	Year Joined FP	HSRD FTE*	VA Appt
<b>Lynne V. McFarland</b>	PhD	Associate Investigator	Project Coordinator			1.000	1.000
<b>Sandra L. Pinos</b>	BA, MPH	Project Coordinator Associate Investigator				1.000	1.000
<b>Suparna Rajan</b>	PhD	Associate Investigator				0.750	0.750
<b>Gregory J. Raugi</b>	MD, PhD	Associate Investigator	Chief, Dermatology Section			0.100	1.000
<b>Sheri D. Reder</b>	PhD	Project Coordinator Associate Investigator				0.550	0.550
<b>Nancy D. Sharp</b>	PhD	Project Coordinator Associate Investigator				1.000	1.000
<b>Carolyn M. Wallace</b>	PhD	Project Coordinator Associate Investigator				1.000	1.000
<b>Lisa M. Winterbottom</b>	MD, MPH	Associate Investigator, Portland Affiliate	Clinic Preceptor, Portland VAMC Director, The Portland Center for the Evaluation of Clinical Services Staff Physician	Assistant Professor of Medicine		0.200	1.000
		DRA(s):	Chronic Diseases; Health Services and Systems				
		DRE(s):	Diagnosis and Prognosis; Epidemiology				
		INTERESTS:	Evidence-Based Medicine; Teaching				

**Seattle Center of Excellence Investigators (Core and Affiliate), FY 2006**

	Degree(s)	Center Title(s)	Other VA Title(s)	University Title(s)	Year Joined FP	HSRD FTE*	VA Appt
<b>Bessie A. Young</b>	MD, MPH	Associate Investigator	Staff Physician, Nephrology	Assistant Professor, Department of Medicine Director, Home Hemodialysis, NW Kidney Centers, Seattle		0.050	0.200

DRA(s): Chronic Diseases; Health Services and Systems; Special (Underserved, High Risk) Populations

DRE(s): Diagnosis and Prognosis; Epidemiology

INTERESTS: Chronic Disease Epidemiology; Diabetes Mellitus; Nephrology; Prevention; Quality of Care; Racial Differences in Care; Treatment Outcome

---

\* FTE refers to percentage of Center time devoted to HSRD

**Count = 53**

### 3.1 Budget Information (Table 2)

#### Seattle Center of Excellence Budget Information

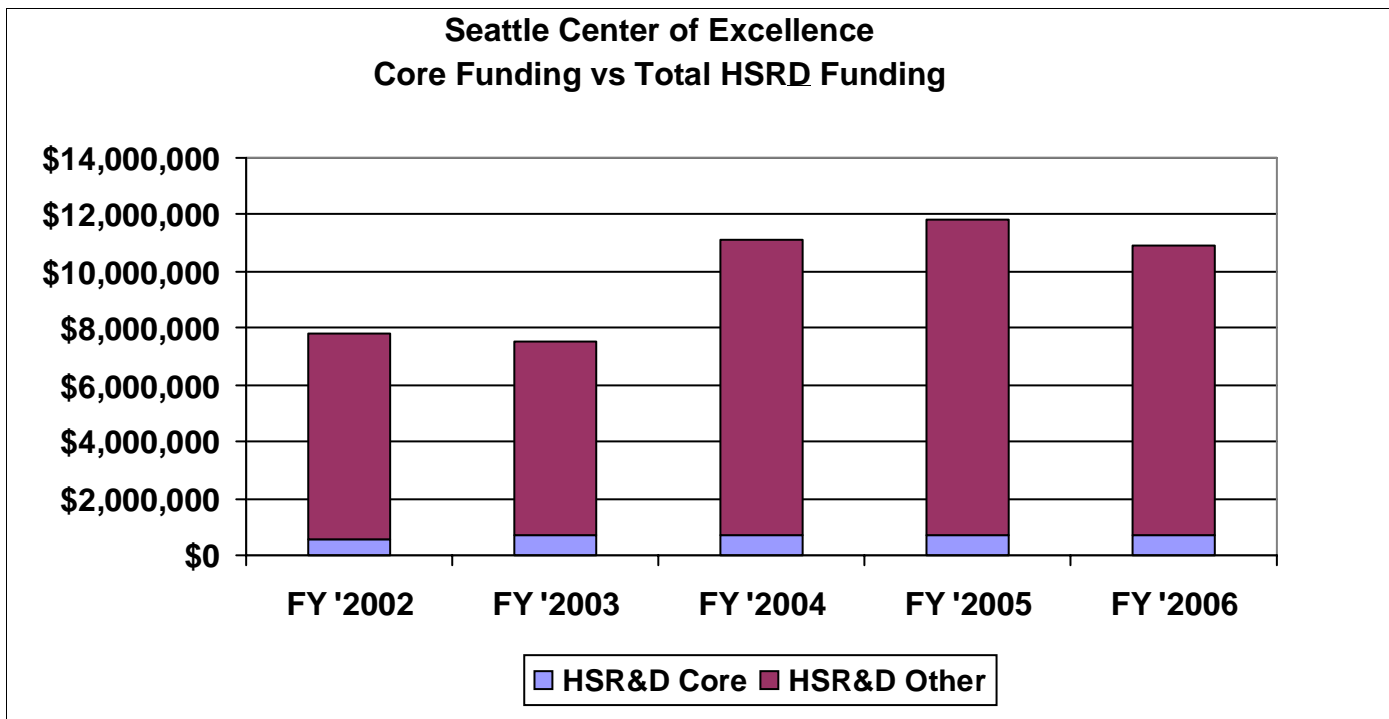
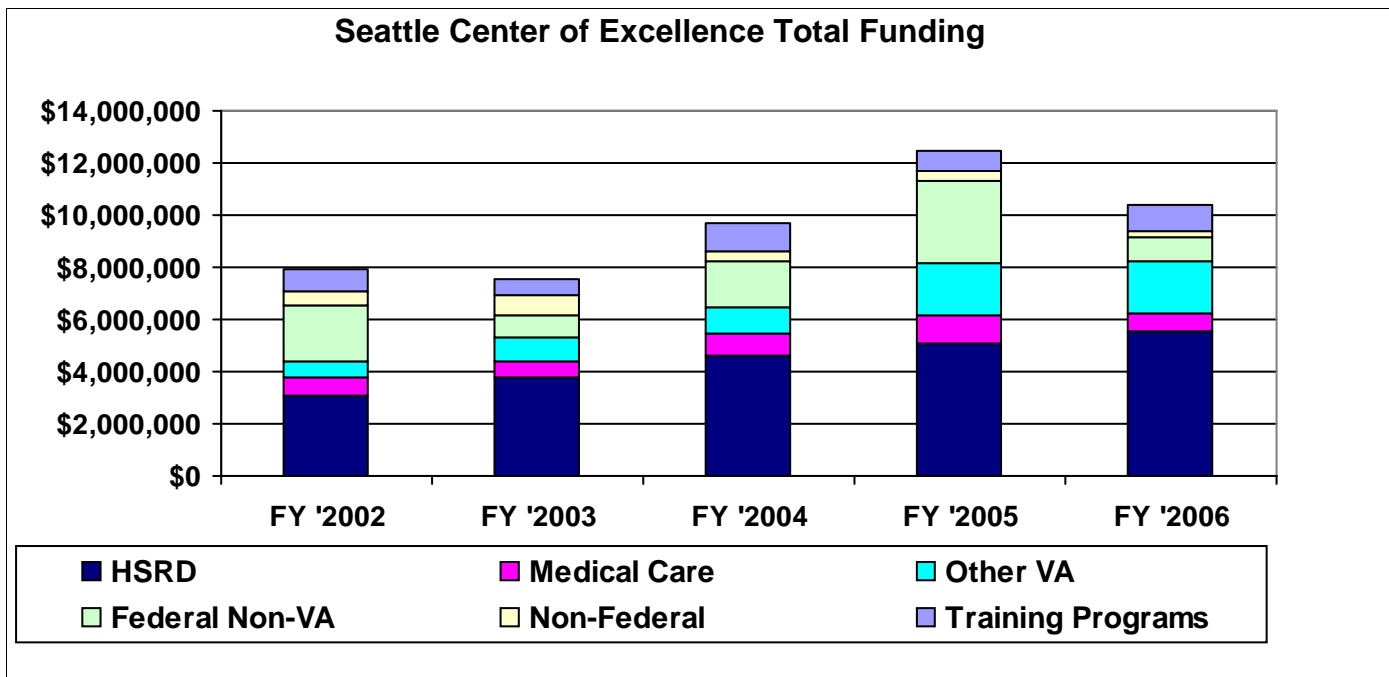
Funding Source(s)	Fiscal Year Funding					Number Of Projects				
	2002	2003	2004	2005	2006	2002	2003	2004	2005	2006
<b>HSR&amp;D</b>										
Core	\$595,718	\$708,000	\$728,000	\$708,000	\$689,265	1	1	2	1	1
Supplemental Funds	\$324,010	\$298,610	\$451,995	\$632,617	\$253,853	4	2	2	3	2
IIR	\$436,174	\$979,138	\$1,147,214	\$1,480,121	\$1,997,531	2	4	9	11	18
QUERI SDR - HSR&D	\$0	\$0	\$0	\$96,724	\$153,094	0	0	0	1	2
QUERI IIR - HSR&D	\$417,665	\$472,938	\$867,038	\$556,468	\$315,124	3	3	5	3	2
SDR	\$0	\$0	\$0	\$340,742	\$381,730	0	0	0	2	2
RCD (Career Development	\$592,657	\$683,857	\$752,216	\$718,672	\$923,491	4	5	6	6	5
QUERI SDP - HSR&D	\$31,517	\$0	\$0	\$0	\$0	1	1	0	0	0
RCS (Career Scientist)	\$247,380	\$268,897	\$284,259	\$307,454	\$315,573	2	2	2	2	2
LIP - HSR&D	\$45,017	\$0	\$0	\$0	\$0	5	0	0	0	1
ORD-Wide Projects	\$242,760	\$121,380	\$160,400	\$39,703	\$4,425	2	1	1	1	1
Other Center - Transfer	\$0	\$0	\$0	\$0	\$504	0	0	0	0	1
USA	\$20,500	\$50,000	\$50,000	\$25,000	\$0	1	1	1	1	0
Admin & Travel Reimburse	\$68,993	\$127,005	\$79,013	\$68,008	\$50,674	1	1	1	2	3
IT - HSR&D	\$0	\$0	\$0	\$0	\$367,225	0	0	0	0	17
OAA - HSR&D Supplemen	\$70,000	\$70,000	\$70,000	\$77,000	\$77,000	4	4	4	4	4
Sub Total	<b>\$3,092,391</b>	<b>\$3,779,825</b>	<b>\$4,590,135</b>	<b>\$5,050,509</b>	<b>\$5,529,489</b>	<b>30</b>	<b>25</b>	<b>33</b>	<b>37</b>	<b>61</b>
<b>QUERI</b>										
QUERI Center Core	\$339,564	\$350,000	\$492,000	\$488,300	\$432,002	2	2	2	3	3
QUERI Supplemental Fun	\$0	\$0	\$178,410	\$62,689	\$0	0	0	4	1	0
Administrative Projects - Q	\$0	\$0	\$19,583	\$23,667	\$27,459	0	0	1	1	2
Implementation - MC	\$0	\$0	\$0	\$0	\$6,349	0	0	0	0	1
QUERI SDP - MC	\$266,510	\$139,689	\$100,078	\$265,936	\$216,567	1	2	2	3	4
QUERI SDR - MC	\$0	\$0	\$0	\$43,000	\$16,333	0	0	0	1	1
QUERI Administrative Proj	\$0	\$0	\$0	\$15,000	\$2,546	0	0	0	1	1
QUERI Admin & Equipmen	\$0	\$0	\$4,000	\$0	\$20,892	0	0	2	0	1
QUERI Admin & Travel	\$68,993	\$127,005	\$79,013	\$45,540	\$5,478	1	1	1	1	2
Sub Total	<b>\$675,067</b>	<b>\$616,694</b>	<b>\$873,084</b>	<b>\$944,132</b>	<b>\$727,626</b>	<b>4</b>	<b>5</b>	<b>12</b>	<b>11</b>	<b>15</b>

<b>Other VA</b>										
CSP	\$120,510	\$0	\$0	\$0	\$24,833	1	0	0	0	1
Core - Administrative Contr	\$0	\$0	\$0	\$649,000	\$685,000	0	0	0	1	2
Medical Care	\$0	\$145,563	\$234,246	\$395,376	\$379,803	0	1	1	1	3
Other	\$488,252	\$740,901	\$744,851	\$985,658	\$912,572	6	5	3	9	4
VISN	\$24,947	\$0	\$0	\$0	\$0	1	0	0	0	0
Sub Total	<b>\$633,709</b>	<b>\$886,464</b>	<b>\$979,097</b>	<b>\$2,030,034</b>	<b>\$2,002,208</b>	<b>8</b>	<b>6</b>	<b>4</b>	<b>11</b>	<b>10</b>
<b>Federal Non-VA</b>										
NIH	\$655,972	\$453,169	\$437,442	\$2,343,736	\$345,392	6	6	5	16	8
AHRQ	\$1,123,095	\$367,738	\$1,229,844	\$770,210	\$208,301	10	4	5	5	6
Other	\$354,857	\$0	\$24,190	\$20,000	\$361,498	1	0	1	1	6
QUERI Projects - Federal	\$0	\$14,400	\$130,000	\$0	\$0	0	1	1	0	0
Sub Total	<b>\$2,133,924</b>	<b>\$835,307</b>	<b>\$1,821,476</b>	<b>\$3,133,946</b>	<b>\$915,191</b>	<b>17</b>	<b>11</b>	<b>12</b>	<b>22</b>	<b>20</b>
<b>Non-Federal</b>										
Foundations	\$346,769	\$101,575	\$113,245	\$304,560	\$110,524	5	4	3	8	3
Commercial	\$66,720	\$100,499	\$0	\$0	\$0	1	1	0	0	0
Other	\$163,602	\$575,654	\$271,357	\$52,174	\$99,839	3	5	2	4	4
Sub Total	<b>\$577,091</b>	<b>\$777,728</b>	<b>\$384,602</b>	<b>\$356,734</b>	<b>\$210,363</b>	<b>9</b>	<b>10</b>	<b>5</b>	<b>12</b>	<b>7</b>
<b>Training Programs</b>										
OAA	\$810,036	\$643,223	\$1,038,019	\$823,491	\$967,318	6	4	8	8	9
Other	\$0	\$0	\$0	\$0	\$0	0	0	0	0	1
Sub Total	<b>\$810,036</b>	<b>\$643,223</b>	<b>\$1,038,019</b>	<b>\$823,491</b>	<b>\$967,318</b>	<b>6</b>	<b>4</b>	<b>8</b>	<b>8</b>	<b>10</b>
<b>Totals</b>	<b>\$7,922,218</b>	<b>\$7,539,241</b>	<b>\$9,686,413</b>	<b>\$12,338,846</b>	<b>\$10,352,195</b>	<b>74</b>	<b>61</b>	<b>74</b>	<b>101</b>	<b>123</b>

Total Number Of Unique Projects				
2002	2003	2004	2005	2006
72	59	73	99	103

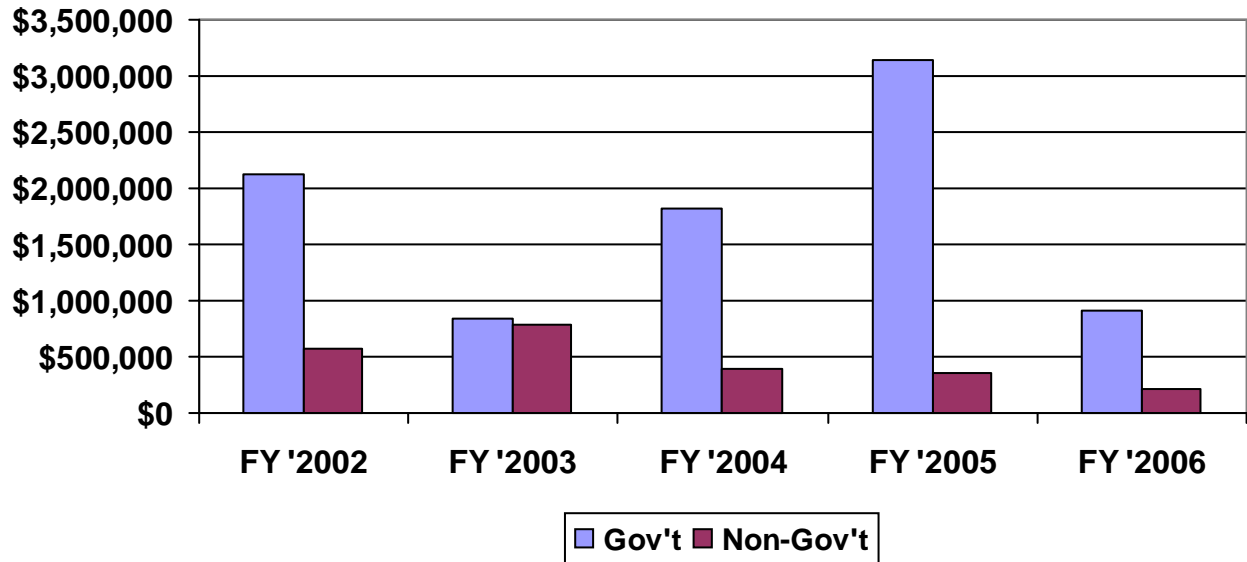
Note: Projects are counted only once if they have multiple funding sources.

3.2 Funding Charts (Figures 1-4)

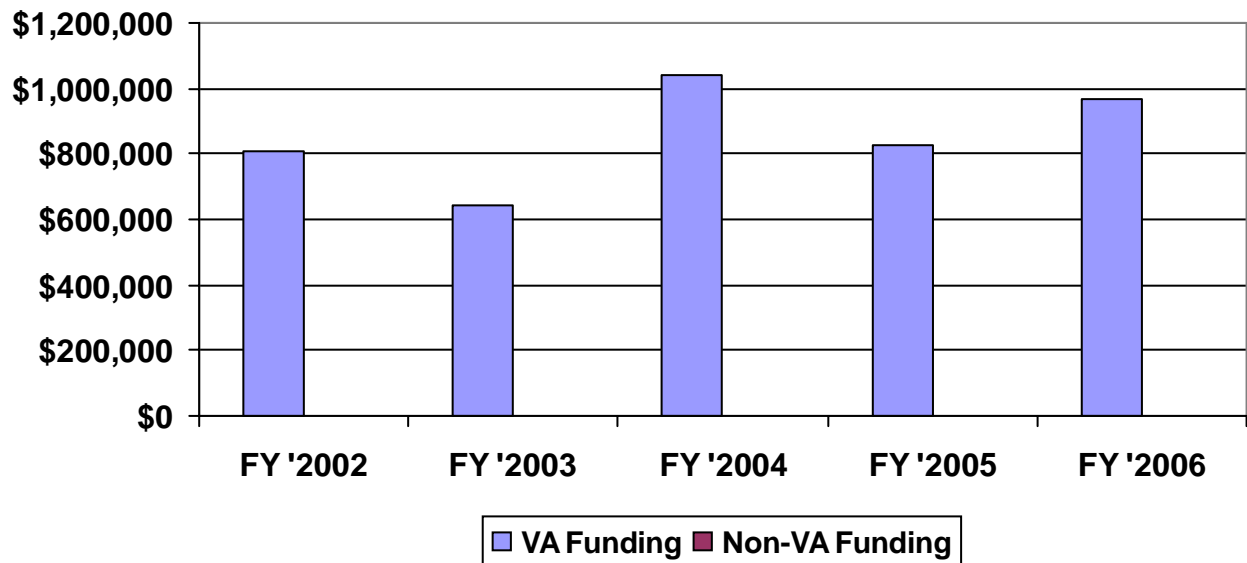




**Seattle Center of Excellence  
External (Non-VA) Funding**



**Seattle Center of Excellence  
Training Support History**



## 4.1 Research Projects and Programs (Table 3)

### Funded Research Projects and Programs Seattle Center of Excellence

Agency ID	Project Title	VA Investigator - Role	Type / Source	Current FY Amount	Total Amount	Start Date	End Date	Status
<b>HSR&amp;D</b>								
BTI 02-092	VHA Clinicians and Bioterror Events: Interactive Web-based Learning	R. J. Harper MD - Co-Investigator	HSR&D	\$2,500	\$2,500	10/2002	9/2007	Final Report / Analysis
CRI 03-153	Determining the Prevalence of Health Literacy Among Veterans	S. Saha MD MPH - Co-Investigator	HSR&D	\$0	\$0	1/2004	9/2006	Completed
ECI 03-206	New Statistical Methods for Analyzing Veteran's Health Care Costs	X. A. Zhou PhD MSc - PI M. L. Maciejewski PhD - Co-Investigator	HSR&D	\$133,635	\$240,611	1/2005	6/2007	Data Collection
ECI 04-186	Cost of Acute Inpatient Nursing Services in VA	C. Liu MPH PhD - PI Y. Li PhD - Co-PI M. L. Maciejewski PhD - Co-Investigator A. E. Sales PhD MSN RN - Co-Investigator N. D. Sharp PhD - Co-Investigator	HSR&D	\$165,091	\$165,091	10/2005	9/2007	Data Collection
IAC 05-206	AUDIT-C as a Scaled Marker for Health Risks in VA Medical Out-patients	K. A. Bradley MD MPH - PI D. H. Au MD MS - Co-Investigator C. L. Bryson MD MS - Co-Investigator D. R. Kivlahan PhD - Co-Investigator	HSR&D	\$122,487	\$122,487	2/2006	1/2009	Start Up Activities
IAC 06-021	Alcohol Misuse and the Risk of Post-Surgical Complications and Mortality	K. A. Bradley MD MPH - PI D. R. Kivlahan PhD - Co-Investigator C. C. Maynard PhD MSW - Co-Investigator B. Yueh MD MPH - Co-Investigator	HSR&D	\$15,740	\$15,740	9/2006	8/2008	Start Up Activities
IAF 05-308	Benefits of 'Repeat Back' Protocols within A Computer-Based Informed Consent Program	J. M. Edwards MD - Co-Investigator	HSR&D	\$16,700	\$16,700	2/2006	1/2009	Data Collection
IHI 02-062	Collaborative Cardiac Care Project (C3P)	S. D. Fihn MD MPH - PI P. K. Diehr PhD - Co-Investigator V. S. Fan MD MPH - Co-Investigator M. S. Gerrity MD MPH PhD - Co-Investigator C. Liu MPH PhD - Co-Investigator K. M. Nelson MD MSHS - Co-Investigator	HSR&D	\$338,189	\$1,321,813	1/2004	9/2007	Data Collection
IIR 02-228	Assessing Practice Variation in Long Term Care Referrals	S. C. Hedrick PhD - PI F. J. Mambourg RN MS MPA - Co-Investigator	HSR&D	\$156,354	\$420,934	4/2004	9/2006	Final Report / Analysis

**Funded Research Projects and Programs**  
**Seattle Center of Excellence**

Agency ID	Project Title	VA Investigator - Role	Type / Source	Current FY Amount	Total Amount	Start Date	End Date	Status
<b>HSR&amp;D</b>								
IIR 02-292	Improving the Quality of End-of-Life Communication for Patients with COPD	D. H. Au MD MS - PI P. K. Diehr PhD - Co-Investigator V. S. Fan MD MPH - Co-Investigator	HSR&D	\$259,713	\$750,698	1/2004	12/2007	Data Collection
IIR 03-194	Methylphenidate for Depressed Cancer Patients in Hospice	L. K. Ganzini MD MPH - PI	HSR&D	\$204,000	\$358,900	1/2005	12/2009	Data Collection
IIR 03-200	VA Prescription Drug Company Copayments and Veterans with Diabetes or Hypertension	M. L. Maciejewski PhD - PI E. J. Boyko MD MPH - Co-Investigator C. L. Bryson MD MS - Co-Investigator C. Liu MPH PhD - Co-Investigator	HSR&D	\$149,701	\$512,794	1/2004	9/2006	Final Report / Analysis
IIR 03-303	Improving Safety Culture and Outcomes in VA Hospitals	A. E. Sales PhD MSN RN - Co-Investigator	HSR&D	\$4,500	\$6,750	4/2005	6/2008	Data Collection
IIR 04-036	Impact of Practice Structure on the Quality of Care for Women Veterans	C. Liu MPH PhD - Co-Investigator	HSR&D	\$28,846	\$28,846	4/2005	3/2007	Data Collection
IIR 04-238	Partners in Dementia Care	C. Liu MPH PhD - Co-Investigator	HSR&D	\$1,425	\$1,425	4/2006	6/2010	Start Up Activities
IIR 04-292	Dual Use, Continuity of Care and Duplication in VA and Medicare	C. Liu MPH PhD - PI M. L. Maciejewski PhD - Co-PI C. L. Bryson MD MS - Co-Investigator M. K. Chapko PhD - Co-Investigator	HSR&D	\$175,229	\$175,229	1/2006	12/2008	Data Collection
IIR 05-121	Obesity Care Practices in the Veterans Health Administration	K. M. Nelson MD MSHS - Co-Investigator	HSR&D	\$1,030	\$1,030	4/2006	3/2009	Data Collection
IIR 05-244	Impact of the DoD Paradigm Shift on VA Amputee Prosthetic Care	G. E. Reiber MPH PhD - PI C. C. Maynard PhD MSW - Co-Investigator	HSR&D	\$113,012	\$113,012	9/2006	3/2008	Start Up Activities
LIP 61-514	Organizational Culture and the VA Cardiac Initiative	C. D. Helfrich PhD MPH - PI	HSR&D	\$0	\$0	1/2006	12/2006	Data Collection
MHS 03-218	Creating HealtheVet Informatics Applications for Collaborative Care	E. F. Chaney PhD - PI	HSR&D	\$95,728	\$192,452	10/2004	9/2006	Final Report / Analysis
MNT 03-215	Expanding and Testing VA Collaborative Care Models for Depression	E. F. Chaney PhD - Co-PI C. Liu MPH PhD - Co-Investigator	HSR&D	\$12,650	\$336,842	7/2004	9/2007	Data Collection

**Funded Research Projects and Programs**  
**Seattle Center of Excellence**

Agency ID	Project Title	VA Investigator - Role	Type / Source	Current FY Amount	Total Amount	Start Date	End Date	Status
<b>HSR&amp;D</b>								
NRI 04-252	Heart PACT: Patient Activation in High-Risk Patients with Heart Failure	S. D. Fihn MD MPH - Co-Investigator C. C. Maynard PhD MSW - Co-Investigator	HSR&D	\$4,425	\$4,425	1/2006	12/2008	Start Up Activities
PMI 03-195	Improving the Treatment of Chronic Pain in Primary Care	S. K. Dobscha MD - PI M. S. Gerrity MD MPH PhD - Co-PI	HSR&D	\$301,100	\$325,324	9/2005	11/2009	Data Collection
RCD 00-018	RCD	D. H. Au MD MS - Awardee	HSR&D	\$201,051	\$874,299	7/2001	6/2007	Career Award
RCD 00-028	RCD	S. Saha MD MPH - Awardee	HSR&D	\$182,788	\$771,829	1/2002	1/2008	Career Award
RCD 02-170	RCD	V. S. Fan MD MPH - Awardee	HSR&D	\$187,366	\$515,290	8/2003	7/2007	Career Award
RCD 03-177	RCD	C. L. Bryson MD MS - Awardee	HSR&D	\$140,599	\$310,723	7/2004	6/2007	Career Award
RCD 04-129	ARCD	S. K. Dobscha MD - Awardee	HSR&D	\$211,687	\$260,517	7/2005	6/2008	Career Award
RCS 91-403	RCS	S. C. Hedrick PhD - Awardee	HSR&D	\$163,896	\$985,371	4/1991	9/2009	Career Award
RCS 98-353	RCS	G. E. Reiber MPH PhD - Awardee	HSR&D	\$151,677	\$845,735	1/1999	4/2009	Career Award
SCS 03-216	Characterizing Variability in Respiratory Care in SCI&D	B. Goldstein MD PhD - Co-Investigator	HSR&D	\$67,900	\$67,900	10/2005	6/2008	Data Collection
SDR 03-090	MI-Plus: Web-enhanced Guideline Implementation for Post MI CBOC Patients	R. J. Harper MD - Co-Investigator A. E. Sales PhD MSN RN - Co-Investigator	HSR&D	\$15,086	\$26,572	9/2003	12/2008	Data Collection
SDR 03-289	Evaluating Quality of Care for Acute Coronary Syndromes in VHA	S. D. Fihn MD MPH - PI G. C. Larsen MD - Co-PI C. D. Helfrich PhD MPH - Co-Investigator C. C. Maynard PhD MSW - Co-Investigator A. E. Sales PhD MSN RN - Co-Investigator X. A. Zhou PhD MSc - Co-Investigator	HSR&D	\$394,572	\$723,828	10/2004	6/2008	Data Collection
SLI 04-265	The Hearing Aid Effectiveness After Aural Rehabilitation (HEAR) Trial	B. Yueh MD MPH - PI S. C. Hedrick PhD - Co-Investigator C. Liu MPH PhD - Co-Investigator	HSR&D	\$274,114	\$274,114	1/2006	12/2008	Start Up Activities

**Funded Research Projects and Programs**  
**Seattle Center of Excellence**

Agency ID	Project Title	VA Investigator - Role	Type / Source	Current FY Amount	Total Amount	Start Date	End Date	Status
<b>QUERI</b>								
CRS 02-164	Colorectal Cancer Care Outcomes Research and Quality Surveillance Data System	D. H. Au MD MS - Co-Investigator C. D. Blanke MD - Co-Investigator	Medical Care	\$16,333	\$59,333	7/2003	6/2008	Data Collection
CRT 02-059	Translation of Colorectal Cancer Screening Guidelines: A System Intervention	L. L. Humphrey MD MPH - PI M. Helfand MD MPH MS - Co-PI	Medical Care	\$11,910	\$71,594	7/2003	3/2007	Data Collection
IMA 04-160	Collaboration between VA and Academic Experts in Implementation Research	S. D. Fihn MD MPH - Co-Investigator M. C. Hammond MD - Co-Investigator	QUERI	\$0	\$43,250	6/2004	5/2006	Completed
IMV 04-360	Implementing Telemedicine-Based Collaborative Care for MDD in Contract CBOCs	E. F. Chaney PhD - Co-Investigator C. Liu MPH PhD - Co-Investigator	Medical Care	\$6,349	\$6,349	9/2004	3/2009	Data Collection
MNT 02-209	Cost & Value of Evidence Based Solutions for Depression (COVES)	E. F. Chaney PhD - Co-Investigator C. Liu MPH PhD - Co-Investigator	Medical Care	\$8,806	\$178,761	4/2003	12/2006	Final Report / Analysis
MNT 03-213	Implementing Effective, Collaborative Care for Schizophrenia	A. M. Tapp MD - Co-Investigator	Medical Care	\$58,485	\$58,485	1/2006	12/2008	Start Up Activities
MNT 03-215	Expanding and Testing VA Collaborative Care Models for Depression	E. F. Chaney PhD - Co-PI C. Liu MPH PhD - Co-Investigator	Medical Care	\$158,258	\$336,842	7/2004	9/2007	Data Collection
RRP 06-140	Business Case for AMI Care within VHA: Make or Buy Decisions	A. E. Sales PhD MSN RN - PI	QUERI	\$27,459	\$27,459	5/2006	9/2006	Completed
<b>Other VA</b>								
CSP 560	Bronchitis and Emphysema Advice and Training to Reduce Hospitalization (BREATH): A randomized controlled trial of disease management to prevent COPD hospitalizations	V. S. Fan MD MPH - PI B. G. Steele PhD RN - Consultant	Cooperative Studies Program	\$24,833	\$24,833	7/2006	9/2007	Start Up Activities

## Funded Research Projects and Programs

### Seattle Center of Excellence

Agency ID	Project Title	VA Investigator - Role	Type / Source	Current FY Amount	Total Amount	Start Date	End Date	Status
<b>Other VA</b>								
MRC 03-067	VA Nursing Outcomes Database Project	A. E. Sales PhD MSN RN - PI	Medical Care	\$119,203	\$894,388	2/2003	9/2006	Final Report / Analysis
MRC 03-334	Cardiac Care Followup Clinical Study	S. D. Fihn MD MPH - PI A. E. Sales PhD MSN RN - Co-PI	Medical Care	\$251,000	\$251,000	10/2003	9/2007	Data Collection
RR&D 04485R	Diabetic Foot Ulcer Treatment and Amputation Prevention in Non-Tertiary VA Care Facilities	G. E. Reiber MPH PhD - PI G. J. Raugi MD PhD - Co-PI	RR&D	\$44,864	\$44,864	7/2006	6/2008	Start Up Activities
XVA 61-023	Development of a Cardiac Assessment and Tracking System (CART)	S. D. Fihn MD MPH - PI	Patient Care Services	\$780,000	\$2,392,611	1/2003	9/2008	Data Collection
XVA 61-030	Epidemiology of Nosocomial Clostridium Difficile Infections at Puget Sound VA Health Care System	L. V. McFarland PhD - PI	ERIC	\$25,000	\$25,000	1/2006	12/2006	Data Collection
XVA 61-031	An Intervention to Enhance Function in Severe Cardiopulmonary Disease: A Pilot Study	B. G. Steele PhD RN - PI C. M. Dougherty PhD RN - Co-Investigator	Office of Nursing Services	\$9,600	\$9,600	8/2006	7/2007	Start Up Activities
XVA 61-032	Emergency Department Quality Improvement Technical Assistance Project	S. D. Fihn MD MPH - PI C. D. Helfrich PhD MPH - Co-Investigator	Office of Quality and Performance	\$62,708	\$62,708	7/2006	3/2007	Start Up Activities
<b>Federal Non-VA</b>								
1 R01 EB005829	Statistical Methods in Diagnostic Medicine	X. A. Zhou PhD MSc - PI	NIBIB	\$62,076	\$98,076	7/2005	6/2008	Data Collection
1 R01 HL62567-01A3	Causal Analysis of Encouragement Design Studies	X. A. Zhou PhD MSc - PI	NIH	\$128,538	\$827,643	9/2002	8/2006	Completed
1K22CA949 73-01A1	Diet and Prostate Cancer Risk	J. Shannon PhD MPH - PI	NCI	\$116,078	\$348,234	8/2003	8/2006	Completed
2 U01 AG16976-06	National Alzheimer Disease Coordinating Center (NACC)	X. A. Zhou PhD MSc - Co-Investigator	NIH	\$22,000	\$44,000	10/2004	9/2008	Data Collection
290-02-0024, EPC-2	Evidence-based Practice Centers	M. Helfand MD MPH MS - PI	AHRQ	\$0	\$0	6/2002	6/2007	Data Collection

## Funded Research Projects and Programs

### Seattle Center of Excellence

Agency ID	Project Title	VA Investigator - Role	Type / Source	Current FY Amount	Total Amount	Start Date	End Date	Status
<b>Federal Non-VA</b>								
290-02-0024, Task Order 1	Technical Support of the U.S. Preventive Services Task Force	M. Helfand MD MPH MS - PI	AHRQ	\$19,795	\$19,795	9/2004	9/2007	Data Collection
290-02-0024, Task Order 6	Benefits and Risks of Analgesics	M. Helfand MD MPH MS - PI	AHQR	\$4,153	\$4,153	2/2005	6/2006	Completed
290-02-0024, Task Order 7	Scientific Resource Center for Medicare Modernization Act	M. Helfand MD MPH MS - PI D. H. Hickam MD MPH - Co-Investigator	AHQR	\$30,200	\$390,200	6/2005	6/2007	Data Collection
5U10AA11799	Pharmacological and Behavioral Treatment with Alcoholics (Project COMBINE)	A. J. Saxon MD - Co-PI D. R. Kivlahan PhD - Co-Investigator	NIAA	\$1,200	\$190,675	9/1997	9/2006	Final Report / Analysis
HHSA29020-050013C	John M. Eisenberg Clinical Decisions and Communications Science Center	D. H. Hickam MD MPH - PI M. S. Gerrity MD MPH PhD - Co-Investigator M. Helfand MD MPH MS - Co-Investigator S. Saha MD MPH - Co-Investigator	AHRQ	\$55,050	\$85,050	9/2005	9/2007	Data Collection
P01 HD34565	Neurobiology and Genetics of Autism	X. A. Zhou PhD MSc - Co-Investigator	NIH	\$5,000	\$10,000	10/2004	6/2006	Completed
PC030386	Fish Oil Supplementation and Fatty Acid Synthase Expression in the Prostate: A randomized controlled trial	J. Shannon PhD MPH - PI	Department of Defense Prostate Cancer Research Program	\$37,498	\$37,498	3/2004	2/2007	Data Collection
PC051353	Clinical Consortium Award - Coordinating Center Option	J. Shannon PhD MPH - Co-Investigator	Department of Defense (DoD)	\$0	\$0	10/2005	9/2008	Start Up Activities
R01 HS013105-01A1	Regression Analysis of Health Care Costs	X. A. Zhou PhD MSc - PI	AHRQ	\$99,103	\$488,893	9/2002	9/2006	Completed
R01AA12788	Cost-effectiveness of Alcoholism Treatment	D. R. Kivlahan PhD - Co-PI	National Institute on Alcohol Abuse and Alcoholism	\$10,500	\$24,217	8/2000	7/2007	Data Collection
R1053	Marketing and Medicines	M. S. Gerrity MD MPH PhD - Co-PI	Attorney General Consumer and Prescriber Education Grant Program	\$140,000	\$140,000	8/2006	7/2008	Start Up Activities

**Funded Research Projects and Programs**  
**Seattle Center of Excellence**

Agency ID	Project Title	VA Investigator - Role	Type / Source	Current FY Amount	Total Amount	Start Date	End Date	Status
<b>Federal Non-VA</b>								
R21AA1467 2	Evaluation of the AUDIT-C in a Primary Care Population	K. A. Bradley MD MPH - PI	National Institute of Alcohol Abuse and Alcoholism (NIAAA)	\$175,000	\$175,000	3/2005	2/2007	Final Report / Analysis
XNV 61-029	An ICU Intervention to Improve End-of-Life Care	D. H. Au MD MS - Co-Investigator	NINR	\$0	\$0	10/2003	9/2008	Data Collection
XNV 61-089	Patient Distress and Satisfaction as Predictors of Treatment Engagement: A Pilot Study	D. R. Kivlahan PhD - Co-Investigator	University of Washington Alcohol and Drug Abuse Institute	\$3,000	\$6,000	1/2005	12/2005	Completed
XNV 61-091	Patient Distress and Satisfaction as Predictors of Treatment Engagement: A Pilot Study	E. J. Hawkins PhD - Co-Investigator	Alcohol & Drug Abuse Institute (ADAI)	\$6,000	\$6,000	2/2005	2/2006	Completed
<b>Non-Federal</b>								
XNV 61-056	Clinical Outcomes Assessment Program	C. C. Maynard PhD MSW - PI	Foundation for Health Care Quality	\$30,180	\$128,633	1/2000	12/2007	Data Collection
XNV 61-075	Medic I Foundation	C. C. Maynard PhD MSW - Consultant	Seattle Medical Foundation	\$9,800	\$30,981	1/2004	12/2007	Data Collection
XNV 61-079	Family Members' Views on and Experiences with Loved Ones Who Choose Physician-Assisted Suicide	L. K. Ganzini MD MPH - PI S. K. Dobscha MD - Co-Investigator	Greenwall Foundation	\$44,246	\$87,992	1/2004	12/2005	Data Collection
XNV 61-080	The Roles of Attachment, Control, Spirituality and Hopelessness in Decisions for Physician-Assisted Suicide	L. K. Ganzini MD MPH - PI S. K. Dobscha MD - Co-Investigator	NW Health Foundation	\$39,278	\$79,556	1/2004	12/2005	Completed
XNV 61-086	Drug Effectiveness Review Project	M. Helfand MD MPH MS - Co-Investigator	State of Oregon Department of Human Services	\$19,859	\$19,859	10/2003	6/2007	Completed
XNV 61-092	End-of-Life Care: Health Professionals and Patient Deaths	L. K. Ganzini MD MPH - Co-Investigator	Greenwall Foundation	\$27,000	\$27,000	1/2006	12/2007	Start Up Activities
XNV 61-093	Wound Healing Trajectories	G. E. Reiber MPH PhD - Consultant	Smith & Nephew, Inc. Wound Management	\$40,000	\$40,000	10/2005	9/2006	Start Up Activities



## Funded Research Projects and Programs

### Seattle Center of Excellence

Agency ID	Project Title	VA Investigator - Role	Type / Source	Current FY Amount	Total Amount	Start Date	End Date	Status
<b>Training Programs</b>								
RWJ 61-000	Robert Wood Johnson Clinical Scholars Program (Seattle)	R. A. Deyo MD MPH - Director T. D. Koepsell MD MPH - Co-Director	OAA	\$129,313	\$1,100,965	7/1978	6/2006	Training Program
TMI 61-000	VHA Medical Informatics Training Program (Seattle)	K. W. Hammond MD - Director	OAA	\$72,241	\$216,768	7/1995	9/2008	Training Program
TMI 61-500	Medical Informatics Training Program (Portland)	D. H. Hickam MD MPH - Director	OAA	\$74,000	\$283,750	7/1996	6/2006	Training Program
TPA 61-000	Ambulatory Care MD Postdoctoral Training Program (Seattle)	K. A. Bradley MD MPH - Co-Director S. D. Fihn MD MPH - Co-Director	OAA	\$126,081	\$1,016,764	7/1989	6/2006	Training Program
TPA 61-500	Ambulatory Care MD Postdoctoral Training Program (Portland)	D. H. Hickam MD MPH - Director	OAA	\$162,000	\$496,750	7/1990	6/2006	Training Program
TPM 61-000	HSR&D MD Postdoctoral Training Program	K. A. Bradley MD MPH - Co-Director S. D. Fihn MD MPH - Co-Director	OAA	\$122,541	\$406,583	7/1991	6/2008	Training Program
TPP 61-000	Health Services Research and Development PhD Postdoctoral Training Program	G. E. Reiber MPH PhD - Director	OAA	\$138,642	\$340,177	10/1993	9/2008	Training Program
TPV 61-000	Visiting Scholar Program	K. A. Bradley MD MPH - Co-Director S. D. Fihn MD MPH - Co-Director	None	\$0	\$0	7/1994		Training Program
TWH 61-000	Health Issues of Women Veterans Training Program (Seattle)	K. A. Bradley MD MPH - Co-Director S. D. Fihn MD MPH - Co-Director	OAA	\$87,500	\$87,500	7/2006	6/2008	Training Program
TWH 61-500	Health Issues of Women Veterans Training Program (Portland)	D. H. Hickam MD MPH - Director	OAA	\$55,000	\$293,625	7/1998	6/2006	Training Program
<b>Core/Center/Administrative Projects</b>								
CFS 06-170	Failure to Rescue: Methods and Meaning of an Outcome Measure Tightly Coupled to Nursing Care Conference	A. E. Sales PhD MSN RN - PI	HSR&D	\$500	\$500	4/2006	7/2006	Supplemental Funding
ESP 05-225	Evidence Synthesis Activity Pilot Program - Paper 1	M. Helfand MD MPH MS - PI	HSR&D Medical Care	\$4,900 \$2,546	\$22,446	7/2005	9/2007	Administrative Project

## Funded Research Projects and Programs

### Seattle Center of Excellence

Agency ID	Project Title	VA Investigator - Role	Type / Source	Current FY Amount	Total Amount	Start Date	End Date	Status
<b>Core/Center/Administrative Projects</b>								
HFP 04-148	Center of Excellence on Implementing Evidence-Based Practice	A. E. Sales PhD MSN RN - Co-Director	HSR&D	\$504	\$504	6/2004	5/2009	HSR&D Core Funding
HFP 83-027	Northwest Center for Outcomes Research in Older Adults: A Center of Excellence	S. D. Fihn MD MPH - Director D. H. Hickam MD MPH - Co-Director	HSR&D	\$704,940	\$5,312,158	10/1993	9/2008	HSR&D Core Funding
HFP 83-027s	Off-site Lease Space Designation in HSR&D	S. D. Fihn MD MPH - Director	VA Puget Sound Health Care System, Seattle	\$600,000	\$600,000	10/2005	9/2006	Supplemental Funding
HFP 83-027ss	Salary Support	S. D. Fihn MD MPH - Director	R&D	\$85,000	\$85,000	10/2005	9/2006	Supplemental Funding
IHD 98-001	QUERI on Ischemic Heart Disease	S. D. Fihn MD MPH - QUERI Research Coordinator C. D. Helfrich PhD MPH - QUERI Implementation Research Coordinator A. E. Sales PhD MSN RN - QUERI Implementation Research Coordinator G. C. Larsen MD - Co-Investigator C. C. Maynard PhD MSW - Co-Investigator	HSR&D Medical Care	\$24,768 \$282,002	\$1,836,334	6/1998	9/2009	QUERI Core Funding
MNH 05-341	Mental Health QUERI Supplemental	E. F. Chaney PhD - Co-Investigator M. S. Gerrity MD MPH PhD - Co-Investigator	QUERI	\$2,102	\$2,102	8/2005	7/2007	QUERI Core Funding
RES 05-166	HSR&D NATIONAL MEETING	S. Saha MD MPH - Co-Investigator B. Yueh MD MPH - Co-Investigator	HSR&D	\$30,913	\$53,381	1/2005	12/2009	Supplemental Funding
SCI 98-001	QUERI on Spinal Cord Injury	B. Goldstein MD PhD - QUERI Clinical Coordinator M. C. Hammond MD - QUERI Clinical Coordinator P. Ullrich PhD - QUERI Implementation Research Coordinator	Medical Care	\$50,000	\$537,800	6/1998	7/2007	QUERI Core Funding
SUB 98-000	QUERI on Substance Abuse	K. A. Bradley MD MPH - QUERI Clinical Coordinator D. R. Kivlahan PhD - QUERI Clinical Coordinator J. A. Dominitz MD MHS - PI A. J. Saxon MD - PI	Medical Care	\$100,000	\$150,000	6/1998	7/2010	QUERI Core Funding
TMI 95-505	Medical Informatics Postdoctoral Training Program (Seattle)	K. W. Hammond MD - Director	HSR&D	\$14,000	\$97,300	7/1995	9/2007	Supplemental Funding

## Funded Research Projects and Programs

### Seattle Center of Excellence

Agency ID	Project Title	VA Investigator - Role	Type / Source	Current FY Amount	Total Amount	Start Date	End Date	Status
<b>Core/Center/Administrative Projects</b>								
TMI 95-648	Medical Informatics Training Program (Portland)	D. H. Hickam MD MPH - Director	HSR&D	\$14,000	\$97,300	7/1995	9/2007	Supplemental Funding
TPM 97-010	Health Services Research and Development MD Postdoctoral Training Program (Seattle)	K. A. Bradley MD MPH - Director S. D. Fihn MD MPH - Co-Director	HSR&D	\$28,000	\$194,600	10/1996	9/2007	Supplemental Funding
TPP 97-008	HSR&D Supplement: PhD Postdoctoral Training Program (Seattle/Portland)	G. E. Reiber MPH PhD - Director	HSR&D	\$21,000	\$111,300	10/1993	9/2006	Supplemental Funding
XXX XX-XXX	ADMINISTRATIVE AND TRAVEL REIMBURSEMENT S - Field Based Science Advisors (FBSAs)	S. D. Fihn MD MPH - Director	HSR&D Medical Care QUERI	\$19,261 \$2,391 \$985	\$792,907	1/2000	12/2006	Administrative Funding

## 5.1 Bibliography

### Journal Articles

- 
1. Au DH, Kirchdoerfer L, Weiss KB, Udris EM, Sullivan SD. Development of a Symptom Burden Assessment Tool for Patients with Chronic Bronchitis: The Chronic Bronchitis Symptoms Questionnaire. *J COPD* 2005; 2: 209-216.  
**Project:** RCD 00-018, RCD **Career Awardee:** David H. Au, MD, MS

---

  2. Au DH, Udris EM, Fihn SD, McDonell MB, Curtis JR. Differences in health care utilization at the end of life among patients with chronic obstructive pulmonary disease and patients with lung cancer. *Archives of Internal Medicine* 2006; 166: 326-331.  
**Project:** RCD 00-018, RCD **Career Awardee:** David H. Au, MD, MS

---

  3. Binswanger IA, White MC, Perez-Stable EJ, Goldenson J, Tulskey JP. Cancer screening among jail inmates: frequency, knowledge, and willingness. *American Journal of Public Health* 2005; 95: 1781-1787.  
**Project:** RWJ 61-035, Robert Wood Johnson Clinical Scholars Program **Trainee:** Ingrid A. Binswanger, MD, MS

---

  4. Boyko EJ, Ahroni JH, Cohen V, Nelson KM, Heagerty PJ. Prediction of diabetic foot ulcer occurrence using commonly available clinical information: the Seattle Diabetic Foot Study. *Diabetes Care* 2006; 29: 1202-1207.  
**Project:** HFP 83-027, Northwest Center for Outcomes Research in Older Adults: A Center of Excellence **PI:** Gayle E. Reiber, MPH PhD

---

  5. Bryson CL, Mukamal KJ, Mittleman MA, Fried LP, Hirsch CH, Kitzman DW, Siscovick DS. The association of alcohol consumption and incident heart failure: the Cardiovascular Health Study. *Journal of The American College of Cardiology* 2006; 48: 305-311.  
**Project:** RCD 03-177, RCD **Career Awardee:** Christopher L. Bryson, MD, MS

---

  6. Campbell D, Turner AP, Williams RM, Hatzakis M, Bowen JL, Rodriguez A, Haselkorn JK. Alternative/complementary medicine use among VHA patients with multiple sclerosis: Predictors and demographic associations. *Journal of Rehabilitation Research and Development* 2006; 43: 99-110.  
**Project:** TPP 61-013, HSR&D PhD Postdoctoral Fellowship (D. Campbell) **Trainee:** Duncan G. Campbell, PhD

---

  7. Campbell DG, Turner AP, Williams RM, Hatzakis M Jr, Bowen JD, Rodriguez A, Haselkorn JK. Complementary and alternative medicine use in veterans with multiple sclerosis: Prevalence and demographic associations. *Journal of Rehabilitation Research and Development* 2006; 43: 99-110.  
**Project:** TPP 61-013, HSR&D PhD Postdoctoral Fellowship (D. Campbell) **Trainee:** Duncan G. Campbell, PhD

- 
8. Campbell PT, Patterson J, Cromer D, Wall K, Adams GL, Albano A, Corey C, Fox P, Gardner J, Hawthorne B, Lipton J, Sejersten M, Thompson A, Thompson A, Wilfong S, Maynard C, Wagner G. Prehospital triage of acute myocardial infarction: wireless transmission of electrocardiograms to the on-call cardiologist via a handheld computer. *Journal of Electrocardiology* 2005; 38: 300-309.  
**Project:** HFP 83-027, Northwest Center for Outcomes Research in Older Adults: A Center of Excellence **PI:** Charles Maynard, PhD
- 
9. Carlson B, Simopolous N, Goy ER, Jackson A, Ganzini L. Oregon hospice chaplains' experiences with patients requesting physician-assisted suicide. *Journal of Palliative Medicine* 2005; 8: 1160-1166.  
**Project:** HFP 83-027, Northwest Center for Outcomes Research in Older Adults: A Center of Excellence **PI:** Linda Ganzini, MD
- 
10. Carson S, McDonagh M, Russman B, Helfand M. Hyperbaric oxygen therapy for stroke: a systematic review of the evidence. *Clinical Rehabilitation* 2005; 19: 819-833.  
**Project:** HFP 83-027, Northwest Center for Outcomes Research in Older Adults: A Center of Excellence **PI:** Mark Helfand, MD
- 
11. Chi RC, Reiber GE, Neuzil KM. Influenza and pneumococcal vaccination in older veterans: results from the behavioral risk factor surveillance system. *Journal of The American Geriatrics Society* 2006; 54: 217-223.  
**Project:** RCS 98-353, RCS **Career Awardee:** Gayle E. Reiber, MPH, PhD
- 
12. Cohen L, Ganzini L, Mitchell C, Arons S, Goy E, Cleary J. Accusations of murder and euthanasia in end-of-life care. *Journal of Palliative Medicine* 2005; 8: 1096-1104.  
**Project:** HFP 83-027, Northwest Center for Outcomes Research in Older Adults: A Center of Excellence **PI:** Linda Ganzini, MD
- 
13. Curtis JR, Engelberg RA, Wenrich MD, Au DH. Communication about palliative care for patients with chronic obstructive pulmonary disease. *Journal of Palliative Care* 2005; 21: 157-164.  
**Project:** IIR 02-292, Improving the Quality of End-of-Life Communication for Patients with COPD **PI:** David H. Au, MD, MS  
**Project:** RCD 00-018, RCD **Career Awardee:** David H. Au, MD, MS
- 
14. Diehr PH, Derleth AM, McKenna SP, Martin ML, Bushnell DM, Simon G, Patrick DL. Synchrony of change in depressive symptoms, health status, and quality of life in persons with clinical depression. *Health and Quality of Life Outcomes* 2006; 4: 27-27.  
**Project:** TPP 61-017, HSR&D PhD Postdoctoral Fellowship (A. Derleth) **Trainee:** Ann M. Derleth, MSPH, PhD

- 
15. Dinh P, Zhou XH. Nonparametric statistical methods for cost-effectiveness analyses. *Biometrics* 2006; 62: 576-588.
- Project:** HFP 83-027, Northwest Center for Outcomes Research in Older Adults: A Center of Excellence
- PI:** Xiao-Hua Andrew Zhou, PhD, MSc
- 
16. Dobie DJ, Maynard C, Kivlahan DR, Johnson KM, Simpson T, David AC, Bradley K. Posttraumatic stress disorder screening status is associated with increased VA medical and surgical utilization in women. *Journal of General Internal Medicine* 2006; 21 Suppl 3: S58-S64.
- Project:** GEN 97-022, Veterans Women's Alcohol Problems: Prevalence, Screening and Self-Help
- PI:** Katharine A. Bradley, MD, MPH
- Project:** LIP 61-114, The Relationship of Screening Questionnaires for Alcohol Use Disorders and PTSD to VA Hospital Patient Utilization Among Women
- PI:** Katharine A. Bradley, MD, MPH
- 
17. Dobscha SK, Snyder KM, Corson K, Ganzini L. Psychiatry resident graduate comfort with general medical issues: impact of an integrated psychiatry-primary medical care training track. *Academic Psychiatry : The Journal of The American Association of Directors of Psychiatric Residency Training and The Association For Academic Psychiatry* 2005; 29: 448-451.
- Project:** RCD 04-129, ARCD
- Career Awardee:** Steven K. Dobscha, MD
- 
18. Farwell DG, Kezirian EJ, Heydt JL, Yueh B, Futran ND. Efficacy of small reconstruction plates in vascularized bone graft mandibular reconstruction. *Head and Neck* 2006; 28: 573-579.
- Project:** HFP 83-027, Northwest Center for Outcomes Research in Older Adults: A Center of Excellence
- PI:** Bevan Yueh, MD
- 
19. Felker BL, Chaney E, Rubenstein LV, Bonner LM, Yano EM, Parker LE, Worley LL, Sherman SE, Ober S. Developing Effective Collaboration Between Primary Care and Mental Health Providers. *Primary Care Companion To The Journal of Clinical Psychiatry* 2006; 8: 12-16.
- Project:** MHI 99-375, Well-being Among Veterans Enhancement Study (WAVES)
- PI:** Edmund F. Chaney, PhD
- Project:** MNT 01-027, Translating Best Practices for Depression Care into VA Care Solutions
- PI:** Lisa V. Rubenstein, MD, MSPH
- 
20. Fortney JC, Steffick DE, Burgess JF Jr, Maciejewski ML, Petersen LA. Are primary care services a substitute or complement for specialty and inpatient services?. *Health Services Research* 2005; 40: 1422-1442.
- Project:** 1 R01 HS10230-01A2, Selection Bias by Medicare Beneficiaries with Diabetes
- PI:** Matthew L. Maciejewski, PhD

- 
21. Fromme EK, Bascom PB, Smith MD, Tolle SW, Hanson L, Hickam DH, Osborne ML. Survival, mortality, and location of death for patients seen by a hospital-based palliative care team. *Journal of Palliative Medicine* 2006; 9: 903-911.  
**Project:** HFP 83-027, Northwest Center for Outcomes Research in Older Adults: A Center of Excellence  
**PI:** David Hickam, MD MPH
- 
22. Ganzini L. Physician-assisted suicide. *American Journal of Psychiatry* 2006; 163: 1109-1110; author reply 1110.  
**Project:** HFP 83-027, Northwest Center for Outcomes Research in Older Adults: A Center of Excellence  
**PI:** Linda Ganzini, MD
- 
23. Ganzini L, Beer TM, Brouns M, Mori M, Hsieh YC. Interest in physician-assisted suicide among Oregon cancer patients. *Journal of Clinical Ethics* 2006; 17: 27-38.  
**Project:** HFP 83-027, Northwest Center for Outcomes Research in Older Adults: A Center of Excellence  
**PI:** Linda Ganzini, MD
- 
24. Goss JR, Maynard C, Aldea GS, Marcus-Smith M, Whitten RW, Johnston G, Phillips RC, Reisman M, Kelley A, Anderson RP. Effects of a statewide physician-led quality-improvement program on the quality of cardiac care. *American Heart Journal* 2006; 151: 1033-1042.  
**Project:** XNV 61-087, Clinical Research Consortium to Improve Resuscitation Outcomes (Clinical Center)  
**PI:** Charles C. Maynard, PhD, MSW
- 
25. Gray SL, Odegard PS, Sales AE, Young HM, Sullivan JH, Hedrick SC. Quality of medication records and use of pharmacy resources in community residential care facilities. *Annals of Pharmacotherapy* 2006; 40: 894-899.  
**Project:** 96314-G, Community Residential Care In Washington State, Predictors of Health Status, Service Use and Costs  
**PI:** Susan C. Hedrick, PhD  
**Project:** RCS 91-403, RCS  
**Career Awardee:** Susan C. Hedrick, PhD
- 
26. Gregg J, Saha S. Losing culture on the way to competence: the use and misuse of culture in medical education. *Academic Medicine* 2006; 81: 542-547.  
**Project:** RCD 00-028, RCD  
**Career Awardee:** Somnath Saha, MD, MPH
- 
27. Hagedorn H, Hogan M, Smith JL, Bowman C, Curran GM, Espadas D, Kimmel B, Kochevar L, Legro MW, Sales AE. Lessons learned about implementing research evidence into clinical practice. Experiences from VA QUERI. *Journal of General Internal Medicine* 2006; 21 Suppl 2: S21-S24.  
**Project:** IHD 98-001, QUERI on Ischemic Heart Disease  
**PI:** Greg C. Larsen, MD

- 
28. Hansen L, Archbold PG, Stewart B, Westfall UB, Ganzini L. Family caregivers making life-sustaining treatment decisions: factors associated with role strain and ease. *Journal of Gerontological Nursing* 2005; 31: 28-35.  
**Project:** HFP 83-027, Northwest Center for Outcomes Research in Older Adults: A Center of Excellence **PI:** Linda Ganzini, MD
- 
29. Helfand M. Web-based resources for modelers from medical decision making. *Medical Decision Making* 2006; 26: 300-300.  
**Project:** HFP 83-027, Northwest Center for Outcomes Research in Older Adults: A Center of Excellence **PI:** Mark Helfand, MD
- 
30. Hersh WR, Hickam DH, Erlichman M. The evidence base of telemedicine: Overview of the supplement. *Journal of Telemedicine and Telecare* 2006; 12 Suppl 2: S1-S2.  
**Project:** 290-02-0024, Task Order 1, Technical Support of the U.S. Preventive Services Task Force **PI:** Mark Helfand, MD, MPH, MS
- 
31. Hersh WR, Hickam DH, Severance SM, Dana TL, Pyle Krages K, Helfand M. Diagnosis, access and outcomes: Update of a systematic review of telemedicine services. *Journal of Telemedicine and Telecare* 2006; 12 Suppl 2: S3-31.  
**Project:** HFP 83-027, Northwest Center for Outcomes Research in Older Adults: A Center of Excellence **PI:** David Hickam, MD MPH
- 
32. Ho PM, Prochazka AV, Magid DJ, Sales AE, Grunwald GK, Hammermeister KE, Rumsfeld JS. The association between processes, structures and outcomes of secondary prevention care among VA ischemic heart disease patients. *BMC Cardiovascular Disorders [Electronic Resource]* 2006; 6: 6-6.  
**Project:** MRC 03-334, Cardiac Care Followup Clinical Study **PI:** Stephan D. Fihn, MD, MPH
- 
33. Ioannou GN, Boyko EJ, Lee SP. The prevalence and predictors of elevated serum aminotransferase activity in the United States in 1999-2002. *American Journal of Gastroenterology* 2006; 101: 76-82.  
**Project:** TPA 61-023, Ambulatory Care Postdoctoral Fellowship **Trainee:** George N. Ioannou, MD, MS



- 
34. Ioannou GN, Weiss NS, Boyko EJ, Mozaffarian D, Lee SP. Elevated serum alanine aminotransferase activity and calculated risk of coronary heart disease in the United States. *Hepatology* 2006; 43: 1145-1151.
- Project:** TPA 61-023, Ambulatory Care Postdoctoral Fellowship      **Trainee:** George N. Ioannou, MD, MS
- Project:** TPM 61-020, HSR&D Postdoctoral Fellowship      **Trainee:** Dariush Mozaffarian, MD, MPH
- 
35. Johnson KM, Bradley KA, Bush K, Gardella C, Dobie DJ, Laya MB. Frequency of mastalgia among women veterans. Association with psychiatric conditions and unexplained pain syndromes. *Journal of General Internal Medicine* 2006; 21 Suppl 3: S70-S75.
- Project:** GEN 97-022, Veterans Women's Alcohol Problems: Prevalence, Screening and Self-Help      **PI:** Katharine A. Bradley, MD, MPH
- 
36. Johnson KM, Nelson KM, Bradley KA. Television viewing practices and obesity among women veterans. *Journal of General Internal Medicine* 2006; 21 Suppl 3: S76-S81.
- Project:** GEN 97-022, Veterans Women's Alcohol Problems: Prevalence, Screening and Self-Help      **PI:** Katharine A. Bradley, MD, MPH
- 
37. Johnston MV, Pogach L, Rajan M, Mitchinson A, Krein SL, Bonacker K, Reiber G. Personal and treatment factors associated with foot self-care among veterans with diabetes. *Journal of Rehabilitation Research and Development* 2006; 43: 227-238.
- Project:** RCS 98-353, RCS      **Career Awardee:** Gayle E. Reiber, MPH, PhD
- 
38. Katon WJ, Rutter C, Simon G, Lin EH, Ludman E, Ciechanowski P, Kinder L, Young B, Von Korff M. The association of comorbid depression with mortality in patients with type 2 diabetes. *Diabetes Care* 2005; 28: 2668-2672.
- Project:** HFP 83-027, Northwest Center for Outcomes Research in Older Adults: A Center of Excellence      **PI:** Gayle Reiber, MPH PhD
- 
39. Katon WJ, Schoenbaum M, Fan MY, Callahan CM, Williams J Jr, Hunkeler E, Harpole L, Zhou XH, Langston C, Unutzer J. Cost-effectiveness of improving primary care treatment of late-life depression. *Archives of General Psychiatry* 2005; 62: 1313-1320.
- Project:** HFP 83-027, Northwest Center for Outcomes Research in Older Adults: A Center of Excellence      **PI:** Andrew Zhou, PhD

- 
40. Knight CL, Fihn SD. Update in general internal medicine. *Annals of Internal Medicine* 2006; 145: 52-61.  
**Project:** HFP 83-027, Northwest Center for Outcomes Research in Older Adults: A Center of Excellence  
**PI:** Stephan Fihn, MD MPH
- 
41. Kraemer DF, Nelson HD, Bauer DC, Helfand M. Economic comparison of diagnostic approaches for evaluating osteoporosis in older women. *Osteoporosis International : A Journal Established As Result of Cooperation Between The European Foundation For Osteoporosis and The National Osteoporosis Foundation of The Usa* 2006; 17: 68-76.  
**Project:** 290-97-0018: Task Order 2, Technical Support of the U. S. Preventive Services Task Force  
**PI:** Mark Helfand, MD, MPH, MS
- 
42. Kripalani S, Paasche-Orlow MK, Parker RM, Saha S. Advancing the field of health literacy. *Journal of General Internal Medicine* 2006; 21: 804-805.  
**Project:** RCD 00-028, RCD  
**Career Awardee:** Somnath Saha, MD, MPH
- 
43. Lee JA, Liu CF, Sales AE. Racial and ethnic differences in diabetes care and health care use and costs. *Preventing Chronic Disease (electronic resource)* 2006; 3: A85-A85.  
**Project:** HFP 83-027, Northwest Center for Outcomes Research in Older Adults: A Center of Excellence  
**PI:** Chuan-Fen Liu, PhD
- 
44. Lin EH, Katon W, Rutter C, Simon GE, Ludman EJ, Von Korff M, Young B, Oliver M, Ciechanowski PC, Kinder L, Walker E. Effects of enhanced depression treatment on diabetes self-care. *Annals of Family Medicine* 2006; 4: 46-53.  
**Project:** TPP 61-014, HSR&D PhD Postdoctoral Fellowship (L. Kinder)  
**Trainee:** Leslie S. Kinder, PhD, MS
- 
45. Lin P, Campbell DG, Chaney EF, Liu CF, Heagerty P, Felker BL, Hedrick SC. The influence of patient preference on depression treatment in primary care. *Annals of Behavioral Medicine* 2005; 30: 164-173.  
**Project:** IIR 95-097, Effectiveness of Team Treatment of Depression in Primary Care  
**PI:** Susan C. Hedrick, PhD  
**Project:** RCS 91-403, RCS  
**Career Awardee:** Susan C. Hedrick, PhD
- 
46. Lipton JA, Strauss DG, Young D, Sejersten M, Maynard C, Vaught C, Versteeg D, Munsey D, Albright JL, Leibrandt PN, Bell S, Jacobowitz S, Wall T, Wagner G. The future of STEMI response. *JEMS : A Journal of Emergency Medical Services* 2006; 31: S8-12.  
**Project:** HFP 83-027, Northwest Center for Outcomes Research in Older Adults: A Center of Excellence  
**PI:** Charles Maynard, PhD

- 
47. Liu CF, Campbell DG, Chaney EF, Li YF, McDonell M, Fihn SD. Depression diagnosis and antidepressant treatment among depressed VA primary care patients. *Administration and Policy in Mental Health* 2006; 33: 331-341.
- Project:** IIR 99-376, Population-Based Assessments of Health Status and Satisfaction Using ACQUIP **PI:** Stephan D. Fihn, MD, MPH
- Project:** SDR 96-002, Ambulatory Care Quality Improvement (ACQUIP) **PI:** Stephan D. Fihn, MD, MPH
- Project:** TPP 61-013, HSR&D PhD Postdoctoral Fellowship (D. Campbell) **Trainee:** Duncan G. Campbell, PhD
- 
48. Maynard C, Lowy E, Rumsfeld J, Sales AE, Sun H, Kopjar B, Fleming B, Jesse RL, Rusch R, Fihn SD. The prevalence and outcomes of in-hospital acute myocardial infarction in the Department of Veterans Affairs Health System. *Archives of Internal Medicine* 2006; 166: 1410-1416.
- Project:** IHD 98-001, QUERI on Ischemic Heart Disease **PI:** Greg C. Larsen, MD
- Project:** MRC 03-334, Cardiac Care Followup Clinical Study **PI:** Stephan D. Fihn, MD, MPH
- 
49. Maynard C, Sun H, Lowy E, Sales AE, Fihn SD. The use of percutaneous coronary intervention in black and white veterans with acute myocardial infarction. *BMC Health Services Research [Electronic Resource]* 2006; 6: 107-107.
- Project:** MRC 03-334, Cardiac Care Followup Clinical Study **PI:** Stephan D. Fihn, MD, MPH
- 
50. McCormick KA, Cochran NE, Back AL, Merrill JO, Williams EC, Bradley KA. How primary care providers talk to patients about alcohol: a qualitative study. *Journal of General Internal Medicine* 2006; 21: 966-972.
- Project:** 1484, Primary Care Discussions of Alcohol Use: A Pilot Study Audiotaping Appointments of Heavy Drinking Veterans **PI:** Katharine A. Bradley, MD, MPH
- Project:** 1K23 AA00313, Effectiveness of Primary Care Alcohol Interventions **PI:** Katharine A. Bradley, MD, MPH
- 
51. McTiernan A, Yasui Y, Sorensen B, Irwin ML, Morgan A, Rudolph RE, Surawicz C, Lampe JW, Ayub K, Potter JD, Lampe PD. Effect of a 12-month exercise intervention on patterns of cellular proliferation in colonic crypts: a randomized controlled trial. *Cancer Epidemiology, Biomarkers and Prevention* 2006; 15: 1588-1597.
- Project:** TPM 61-027, HSR&D MD Postdoctoral Fellowship (R. Rudolph) **Trainee:** Rebecca E. Rudolph, MD, MPH

---

52. Meenan R, Smith DH, Hornbrook MC, Fe, Fellows J, Lynch FR, Helfand M. The state of cost-effectiveness analysis in American managed care. *Expert Review Pharmacoeconomics Outcomes Research* 2006; 6: 229-237.

**Project:** 290-02-0024, Task Order 1, Technical Support of the U.S. Preventive Services Task Force

**PI:** Mark Helfand, MD, MPH, MS

---

53. Mularski RA, White-Chu F, Overbay D, Miller L, Asch SM, Ganzini L. Measuring pain as the 5th vital sign does not improve quality of pain management. *Journal of General Internal Medicine* 2006; 21: 607-612.

**Project:** HFP 83-027, Northwest Center for Outcomes Research in Older Adults: A Center of Excellence

**PI:** Linda Ganzini, MD

---

54. Nelson KM. The burden of obesity among a national probability sample of veterans. *Journal of General Internal Medicine* 2006; 21: 915-919.

**Project:** IIR 05-121, Obesity Care Practices in the Veterans Health Administration

**PI:** Polly Hitchcock Noel, PhD, MA, BA

---

55. Parimon T, Au DH, Martin PJ, Chien JW. A risk score for mortality after allogeneic hematopoietic cell transplantation. *Annals of Internal Medicine* 2006; 144: 407-414.

**Project:** RCD 00-018, RCD

**Career Awardee:** David H. Au, MD, MS

---

56. Rejeski WJ, Lang W, Neiberg RH, Van Dorsten B, Foster GD, Maciejewski ML, Rubin R, Williamson DF. Correlates of health-related quality of life in overweight and obese adults with type 2 diabetes. *Obesity (Silver Spring)* 2006; 14: 870-883.

**Project:** HFP 83-027, Northwest Center for Outcomes Research in Older Adults: A Center of Excellence

**PI:** Mattchew Maciejewski, PhD

---

57. Rumsfeld JS, Magid DJ, Peterson ED, Plomondon ME, Petersen LA, Grunwald GK, Every NR, Sales AE. Outcomes after acute coronary syndrome admission to primary versus tertiary Veterans Affairs medical centers: the Veterans Affairs Access to Cardiology study. *American Heart Journal* 2006; 151: 32-38.

**Project:** ACC 97-079, Access to Cardiology: Influence of Organizational Model on Patient Outcomes

**PI:** Nathan R. Every, MD, MPH

---

58. Saha S. The relevance of cultural distance between patients and physicians to racial disparities in health care. *Journal of General Internal Medicine* 2006; 21: 203-205.

**Project:** RCD 00-028, RCD

**Career Awardee:** Somnath Saha, MD, MPH

---

- 
59. Saha S. Improving literacy as a means to reducing health disparities. *Journal of General Internal Medicine* 2006; 21: 893-895.  
**Project:** RCD 00-028, RCD **Career Awardee:** Somnath Saha, MD, MPH
- 
60. Sales A, Smith J, Curran G, Kochevar L. Models, strategies, and tools. Theory in implementing evidence-based findings into health care practice. *Journal of General Internal Medicine* 2006; 21 Suppl 2: S43-S49.  
**Project:** IHD 98-001, QUERI on Ischemic Heart Disease **PI:** Greg C. Larsen, MD
- 
61. Sales AE, Sharp ND, Li YF, Greiner GT, Lowy E, Mitchell P, Sochalski JA, Cournoyer P. Nurse staffing and patient outcomes in Veterans Affairs hospitals. *Journal of Nursing Administration* 2005; 35: 459-466.  
**Project:** IIR 01-160, Nurse Staffing and Patient Outcomes in VA **PI:** Anne E. Sales, PhD, MSN, RN
- 
62. Saxon AJ, Malte CA, Sloan KL, Baer JS, Calsyn DA, Nichol P, Chapko MK, Kivlahan DR. Randomized trial of onsite versus referral primary medical care for veterans in addictions treatment. *Medical Care* 2006; 44: 334-342.  
**Project:** SUI 99-109, Onsite versus Referral Models of Primary Care for Substance Abusing Patients **PI:** Andrew J. Saxon, MD
- 
63. Sejersten M, Maynard C, Clemmensen P. Effects of abciximab as adjunctive therapy in primary percutaneous coronary intervention patients (results from the DANAMI-2 trial). *Acute Cardiac Care* 2006; 8: 75-82.  
**Project:** HFP 83-027, Northwest Center for Outcomes Research in Older Adults: A Center of Excellence **PI:** Charles Maynard, PhD
- 
64. Sejersten M, Pahlm O, Pettersson J, Zhou S, Maynard C, Feldman CL, Wagner GS. Comparison of EASI-derived 12-lead electrocardiograms versus paramedic-acquired 12-lead electrocardiograms using Mason-Likar limb lead configuration in patients with chest pain. *Journal of Electrocardiology* 2006; 39: 13-21.  
**Project:** HFP 83-027, Northwest Center for Outcomes Research in Older Adults: A Center of Excellence **PI:** Charles Maynard, PhD

- 
65. Sejersten M, Ripa RS, Maynard C, Wagner GS, Andersen HR, Grande P, Mortensen LS, Clemmensen P. Usefulness of quantitative baseline ST-segment elevation for predicting outcomes after primary coronary angioplasty or fibrinolysis (results from the DANAMI-2 trial). *American Journal of Cardiology* 2006; 97: 611-616.  
**Project:** HFP 83-027, Northwest Center for Outcomes Research in Older Adults: A Center of Excellence  
**PI:** Charles Maynard, PhD
- 
66. Shipman SA, Helfand M, Moyer VA, Yawn BP. Screening for developmental dysplasia of the hip: a systematic literature review for the US Preventive Services Task Force. *Pediatrics* 2006; 117: e557-e576.  
**Project:** HFP 83-027, Northwest Center for Outcomes Research in Older Adults: A Center of Excellence  
**PI:** Mark Helfand, MD
- 
67. Sloan KL, Montez-Rath ME, Spiro A 3rd, Christiansen CL, Loveland S, Shokeen P, Herz L, Eisen S, Breckenridge JN, Rosen AK. Development and validation of a psychiatric case-mix system. *Medical Care* 2006; 44: 568-580.  
**Project:** IIR 00-077, Effects of Outlier Identification Strategy on Facility Profiling  
**PI:** Kevin L. Sloan, MD
- 
68. Sohn MW, Arnold N, Maynard C, Hynes DM. Accuracy and completeness of mortality data in the Department of Veterans Affairs. *Population Health Metrics [Electronic Resource]* 2006; 4: 2-2.  
**Project:** HFP 83-027, Northwest Center for Outcomes Research in Older Adults: A Center of Excellence  
**PI:** Charles Maynard, PhD
- 
69. Stetler CB, Legro MW, Wallace CM, Bowman C, Guihan M, Hagedorn H, Kimmel B, Sharp ND, Smith JL. The role of formative evaluation in implementation research and the QUERI experience. *Journal of General Internal Medicine* 2006; 21 Suppl 2: S1-S8.  
**Project:** SCI 98-001, QUERI on Spinal Cord Injury  
**PI:** Frances M. Weaver, BA, MA, PhD
- 
70. Turner AP, Kivlahan DR, Rimmele C, Bombardier CH. Does pre-injury alcohol use or blood alcohol level influence cognitive functioning after traumatic brain injury?. *Rehabilitation Psychology* 2006; 51: 78-86.  
**Project:** R21AA14672, Evaluation of the AUDIT-C in a Primary Care Population  
**PI:** Katharine A. Bradley, MD, MPH
- 
71. Turner AP, Williams RM, Bowen JD, Kivlahan DR, Haselkorn JK. Suicidal ideation in multiple sclerosis. *Archives of Physical Medicine and Rehabilitation* 2006; 87: 1073-1078.  
**Project:** R21AA14672, Evaluation of the AUDIT-C in a Primary Care Population  
**PI:** Katharine A. Bradley, MD, MPH
-

---

72. Vaught C, Young DR, Bell SJ, Maynard C, Gentry M, Jacobowitz S, Leibrandt PN, Munsey D, Savona MR, Wall TC, Wagner GS. The failure of years of experience with electrocardiographic transmission from paramedics to the hospital emergency department to reduce the delay from door to primary coronary intervention below the 90-minute threshold during acute myocardial infarction. *Journal of Electrocardiology* 2006; 39: 136-141.

**Project:** HFP 83-027, Northwest Center for Outcomes Research in Older Adults: A Center of Excellence

**PI:** Charles Maynard, PhD

---

73. Ward HB, Kelly RF, Thottapurathu L, Moritz TE, Larsen GC, Pierpont G, Santilli S, Goldman S, Krupski WC, Littooy F, Reda DJ, McFalls EO. Coronary artery bypass grafting is superior to percutaneous coronary intervention in prevention of perioperative myocardial infarctions during subsequent vascular surgery. *Annals of Thoracic Surgery* 2006; 82: 795-800; discussion 800-1.

**Project:** HFP 83-027, Northwest Center for Outcomes Research in Older Adults: A Center of Excellence

**PI:** Greg Larsen, MD

---

74. Watnick S, Wang PL, Demadura T, Ganzini L. Validation of 2 depression screening tools in dialysis patients. *American Journal of Kidney Disease* 2005; 46: 919-924.

**Project:** XNV 61-081, Morbidity and Mortality Among Dialysis Patients after Treatment for Depression

**PI:** Linda K. Ganzini, MD, MPH

---

75. Weaver EM, Maynard C, Yueh B. Beware of the '.....'. *Journal of Clinical Sleep Medicine* 2005; 1: 434.

**Project:** HFP 83-027, Northwest Center for Outcomes Research in Older Adults: A Center of Excellence

**PI:** Bevan Yueh, MD

---

76. Welsh A, Zhou XH. Estimating the retransformed mean in a heteroscedastic two-part model. *Journal of Statistical Planning and Inferences* 2006; 36: 860-881.

**Project:** HFP 83-027, Northwest Center for Outcomes Research in Older Adults: A Center of Excellence

**PI:** Andrew Zhou, PhD

---

77. Williams EC, Kivlahan DR, Saitz R, Merrill JO, Achtmeyer CE, McCormick KA, Bradley KA. Readiness to change in primary care patients who screened positive for alcohol misuse. *Annals of Family Medicine* 2006; 4: 213-220.

**Project:** SUB 03-265, Supplemental QLP Substance Abuse

**PI:** John W. Finney, PhD

**Project:** SUB 04-394, Substance Abuse QUERI LIPs

**PI:** Katharine A. Bradley, MD, MPH

**Project:** SUB 98-000, QUERI on Substance Abuse

**PI:** John W. Finney, PhD

- 
78. Wrobel JS, Robbins JM, Charns MP, Bonacker KM, Reiber GE, Pogach L. Diabetes-related foot care at 10 Veterans Affairs medical centers: must do's associated with successful microsystems. *Joint Commission Journal on Quality and Patient Safety* 2006; 32: 206-213.  
**Project:** RCS 98-353, RCS **Career Awardee:** Gayle E. Reiber, MPH, PhD
- 
79. Yano EM, Bastian LA, Frayne SM, Howell AL, Lipson LR, McGlynn G, Schnurr PP, Seaver MR, Spungen AM, Fihn SD. Toward a VA Women's Health Research Agenda: setting evidence-based priorities to improve the health and health care of women veterans. *Journal of General Internal Medicine* 2006; 21 Suppl 3: S93-S101.  
**Project:** IIR 99-376, Population-Based Assessments of Health Status and Satisfaction Using ACQUIP **PI:** Stephan D. Fihn, MD, MPH
- 
80. Young BA, Rudser K, Kestenbaum B, Seliger SL, Andress D, Boyko EJ. Racial and ethnic differences in incident myocardial infarction in end-stage renal disease patients: The USRDS. *Kidney International* 2006; 69: 1691-1698.  
**Project:** TPA 61-019, Ambulatory Care Postdoctoral Fellow **Trainee:** Bessie A. Young, MD, MPH
- 
81. Yueh B, McDowell JA, Collins M, Souza PE, Loovis CF, Deyo RA. Development and validation of the effectiveness of the auditory rehabilitation scale. *Archives of Otolaryngology -- Head & Neck Surgery* 2005; 131: 851-856.  
**Project:** RCD 98-318, RCD **Career Awardee:** Bevan Yueh, MD, MPH
- 
82. Zhou XH, Liang H. Nonparametric single-index regression models for health care charges with zero values. *Computational Statistics and Data Analysis* 2006; 50: 1378-1390.  
**Project:** ECI 03-206, New Statistical Methods for Analyzing Veteran's Health Care Costs **PI:** Xiao-Hua Andrew Zhou, PhD, MSc



## Book Chapters

- 
1. Ganzini L, Goy ER. Influence of Mental Illness on Decision Making at the End of Life. In: Jansen LA, editor. *Death in the Clinic*. Lanham, MD: Rowman & Littlefield Publishers, Inc, 2006: 81-96.  
**Project:** HFP 83-027, Northwest Center for Outcomes Research in Older Adults: A Center of Excellence **PI:** Linda Ganzini, MD

---

  2. Ganzini L, Johnston W. End-of-Life Decision Making. In: Mitsumoto H, Przedborski S, Gordon PH, editor. *Amyotrophic Lateral Sclerosis*. New York, NY: Taylor and Francis Group, 2006: 811-824.  
**Project:** HFP 83-027, Northwest Center for Outcomes Research in Older Adults: A Center of Excellence **PI:** Linda Ganzini, MD

---

  3. LeMaster J, Reiber GE. The Epidemiology of Foot Ulcers. In: Boulton AJ, editor. *The Foot in Diabetes, Fourth ed.*, 2006.  
**Project:** RCS 98-353, RCS **Career Awardee:** Gayle E. Reiber, MPH, PhD

---

  4. Maciejewski M. Generic Measures. In: Kane R, editor. *Understanding Health Care Outcomes Research, Second ed.* Boston, MA: Jones & Bartlett, 2005.  
**Project:** HFP 83-027, Northwest Center for Outcomes Research in Older Adults: A Center of Excellence **PI:** Matthew Maciejewski, PhD

---

  5. Maciejewski ML. Generic Measures. In: Kane R, editor. *Understanding Health Care Outcomes Research, Second ed.* Gaithersburg, MD: Aspen Publishers, Inc., 2006.  
**Project:** HFP 83-027, Northwest Center for Outcomes Research in Older Adults: A Center of Excellence **PI:** Matthew Maciejewski, PhD

---

  6. Reiber G, McFarland L. Epidemiology and Health Care Costs for Diabetic Foot Problems. In: Veves A, editor. *The Diabetic Foot, Second ed.*: Rittenhouse Book Dist, 2006.  
**Project:** RCS 98-353, RCS **Career Awardee:** Gayle E. Reiber, MPH, PhD

## Conference Presentations / Abstracts

---

1. Binswanger IA, Stern MF, Deyo RA, Heagerty PJ, Cheadle A, Elmore JG, Koepsell TD. Release from Prison: A High-Risk Time for Death? [abstract]. Society of General Internal Medicine 29th Annual Meeting. Los Angeles, CA 2006; 21: 124.

**Project:** HFP 83-027, Northwest Center for Outcomes Research in Older Adults: A Center of Excellence

**PI:** Stephan D. Fihn, MD MPH

---

2. Bonner L, Chaney EF, Young A, Dorr D, Cohen A, Kerr E. Expert Consensus for Chronic Illness Care Informatics Priorities: The CHIACC Expert Panel [poster]. AcademyHealth 2006 Annual Research Meeting. Seattle, WA 2006.

**Project:** MHS 03-218, Creating HealthVet Informatics Applications for Collaborative Care

**PI:** Edmund F. Chaney, PhD

---

3. Bradley KA, DeBenedetti AF, Volk RJ, Williams EC, Frank D, Kivlahan DR. AUDIT-C as a Brief Screen for Alcohol Misuse in a Non-VA Primary Care Sample [talk]. Society of General Internal Medicine 29th Annual Meeting. Los Angeles, CA 2006.

**Project:** R21AA14672, Evaluation of the AUDIT-C in a Primary Care Population

**PI:** Katharine A. Bradley, MD, MPH

**Project:** TPM 61-028, HSR&D MD Postdoctoral Fellowship (D. Frank)

**Trainee:** Danielle Frank, MD

---

4. Bradley KA, DeBenedetti AF, Volk RJ, Williams EC, Frank D, Kivlahan DR. AUDIT-C as a Brief Screen for Alcohol Misuses in a Non-VA Primary Care Sample [poster]. Research Society on Alcoholism Annual Meeting. Baltimore, MD 2006.

**Project:** R21AA14672, Evaluation of the AUDIT-C in a Primary Care Population

**PI:** Katharine A. Bradley, MD, MPH

**Project:** TPM 61-028, HSR&D MD Postdoctoral Fellowship (D. Frank)

**Trainee:** Danielle Frank, MD

---

5. Bradley KA, Kivlahan DR, Hagedorn H, Achtmeyer CE, Williams EC, Hawkins E, Finney JF. Alcohol Screening with the AUDIT-C: Is it Too Sensitive?. VA HSR&D 24th Annual National Meeting. Washington, DC 2006.

**Project:** SUB 98-000, QUERI on Substance Abuse

**PI:** John W. Finney, PhD

---

6. Brunskill AJ. A Case Example of Data Mining and Causal Analysis-Surprising? True? Useful? [talk]. 6th International Conference on Health Policy Research. Boston, MA 2005.

**Project:** TMI 61-007, Medical Informatics Fellowship (A. Brunskill)

**Trainee:** Andrew J. Brunskill, MB, MPH

- 
7. Brunskill AJ, Reiber G, Hammond K. Data, decisions, delemmas and diabetes [abstract]. National Library of Medicine Informatics Training Conference. Indianapolis, IN 2006.  
**Project:** RCS 98-353, RCS **Career Awardee:** Gayle E. Reiber, MPH, PhD  
**Project:** TMI 61-007, Medical Informatics Fellowship (A. Brunskill) **Trainee:** Andrew J. Brunskill, MB, MPH
- 
8. Brunskill AJ, Reiber G, Hammond K. Data, Decisions, Dilemmas and Diabetes [abstract]. National Library of Medicine Training Conference. Indianapolis, IN 2006.  
**Project:** RCS 98-353, RCS **Career Awardee:** Gayle E. Reiber, MPH, PhD  
**Project:** TMI 61-007, Medical Informatics Fellowship (A. Brunskill) **Trainee:** Andrew J. Brunskill, MB, MPH
- 
9. Bryson CL, Au DH, Young B, McDonell MB, Fihn SD. A refill adherence algorithm for multiple short intervals to estimate refill compliance (ReComp) [poster]. VA HSR&D 24th Annual National Meeting. Washington, DC 2006.  
**Project:** IIR 99-376, Population-Based Assessments of Health Status and Satisfaction Using ACQUIP **PI:** Stephan D. Fihn, MD, MPH  
**Project:** RCD 00-018, RCD **Career Awardee:** David H. Au, MD, MS  
**Project:** RCD 03-177, RCD **Career Awardee:** Christopher L. Bryson, MD, MS
- 
10. Campbell DG, Kwon P. Domain-Specific Hope, Life Events, and Dysphoria: An Experimental Analysis. 39th Annual Meeting of the Association for Behavioral and Cognitive Therapies. Washington DC 2005.  
**Project:** TPP 61-013, HSR&D PhD Postdoctoral Fellowship (D. Campbell) **Trainee:** Duncan G. Campbell, PhD
- 
11. Chan D, Liu CF, Chaney EF, Hedrick S. Effectiveness and Cost-Effectiveness of Collaborative Care Depression Treatment in Veterans who Screen Positive for PTSD in Primary Care [abstract]. AcademyHealth 2006 Annual Research Meeting. Seattle, WA 2006.  
**Project:** IIR 95-097, Effectiveness of Team Treatment of Depression in Primary Care **PI:** Susan C. Hedrick, PhD
- 
12. Chaney EF. Improving Depression Treatment in Primary Care: Dissemination and Implementation [talk]. AcademyHealth 2006 Annual Research Meeting. Seattle, WA 2006.  
**Project:** MNT 03-215, Expanding and Testing VA Collaborative Care Models for Depression **PI:** Lisa V. Rubenstein, MD, MSPH

- 
13. Chaney EF. Creating Health Informatics Applications for Collaborative Care of Chronic Illnesses [talk]. AcademyHealth 2006 Annual Research Meeting. Seattle, WA 2006.  
**Project:** MHS 03-218, Creating HealthVet Informatics Applications for Collaborative Care  
**PI:** Edmund F. Chaney, PhD
- 
14. Chapko MK, Dominitz JA. Cost-effectiveness of growth factors during hepatitis C antiviral therapy [poster]. National Viral Hepatitis Prevention Conference. Washington, DC 2005.  
**Project:** HFP 83-027, Northwest Center for Outcomes Research in Older Adults: A Center of Excellence  
**PI:** Michael Chapko, PhD
- 
15. Chapko MK, Sloan KL, Davison J, Dominitz JA. Viral Hepatitis Prevention for Adults: Delivering, Implementing, and Evaluating Prevention and Control Strategies and Services [poster]. CDC National Viral Hepatitis Prevention Conference. Washington, DC 2005.  
**Project:** HFP 83-027, Northwest Center for Outcomes Research in Older Adults: A Center of Excellence  
**PI:** Michael Chapko, PhD
- 
16. Choi P, Jordan CD, Enriquez L, Mendez E, Houck J, Yueh B, et al. Molecular Markers of Oral Squamous Cell Carcinogenesis - from Gene Chips to Tissue Microarrays [talk]. AHNS Annual Meeting and Research Workshop on the Biology, Prevention and Treatment of Head and Neck Cancer. Chicago, IL 2006.  
**Project:** R01 CA095419, Oral Cancer: Molecular Profiles and Clinical Outcomes  
**PI:** Bevan Yueh, MD, MPH
- 
17. Collins MP, Souza PE, Yueh B. Subjective Hearing Complaints and Sentence Recognition Performance for Listeners with Posttraumatic Stress Disorder (PTSD) [poster]. American Auditory Society Bulletin. Scottsdale, AZ 2006; 31: 39.  
**Project:** IIR 99-377, Audiology Visits after Screening for Hearing Loss: An RCT  
**PI:** Bevan Yueh, MD, MPH
- 
18. Dalrymple LS, Sampson JN, Louie TL, Young B, Kestenbaum B. A Population-Based Retrospective Cohort Study of Renal Insufficiency in Veterans with Hepatitis C Virus Exposure [poster]. American Society of Nephrology Meeting. Philadelphia, PA 2005.  
**Project:** TPA 61-030, Ambulatory Care Postdoctoral Fellowship (L. Dalrymple)  
**Trainee:** Lorien S. Dalrymple, MD
- 
19. Derleth A, Budhiarso I. Quality of Life Instruments for Pain: A Review. International Society for Quality of Life Research 2005 Annual Conference. San Francisco, CA 2005.  
**Project:** TPA 61-017, Ambulatory Care Postdoctoral Fellow  
**Trainee:** Therese M. Dawson, B Med, MPH

---

20. Derleth A, Diehr P, Patrick D, Reiber G, McDonell M, Fihn S. Estimating Preference Weighted Health Status from SF-36 Responses for the ACQUIP (VA) Patients [poster]. VA HSR&D 24th Annual National Meeting. Arlington, VA 2006.

**Project:** IIR 99-376, Population-Based Assessments of Health Status and Satisfaction Using ACQUIP

**PI:** Stephan D. Fihn, MD, MPH

**Project:** TPA 61-017, Ambulatory Care Postdoctoral Fellow

**Trainee:** Therese M. Dawson, B Med, MPH

---

21. Diehr P, Cai L, Derleth A, Newman A. Effect of Health Interventions on Longevity, Morbidity, Years of Healthy Life, and Costs [abstract]. 6th International Conference on Health Policy Research. Boston, MA 2005.

**Project:** TPP 61-017, HSR&D PhD Postdoctoral Fellowship (A. Derleth)

**Trainee:** Ann M. Derleth, MSPH, PhD

---

22. Diehr P, Derleth A, Newman A, Cai L. Public Health Interventions and Years of Healthy Life [poster]. AcademyHealth 2006 Annual Research Meeting. Seattle, WA 2006.

**Project:** TPA 61-017, Ambulatory Care Postdoctoral Fellow

**Trainee:** Therese M. Dawson, B Med, MPH

**Project:** TPP 61-017, HSR&D PhD Postdoctoral Fellowship (A. Derleth)

**Trainee:** Ann M. Derleth, MSPH, PhD

---

23. Dobscha S, Corson K, Hickam D, Gerrity M. Randomized Controlled Trial of a Low-Intensity Collaborative Intervention for Depression [talk]. VA HSR&D 24th Annual National Meeting. Arlington, VA 2006.

**Project:** MHI 20-020, Improving Outcomes of Depression in Primary Care

**PI:** Steven K. Dobscha, MD

**Project:** RCD 04-129, ARCD

**Career Awardee:** Steven K. Dobscha, MD

---

24. Dobscha SK. Models of Integrating General Medical and Psychiatric Care in the VA [talk]. VISN23 Mental Health Conference Plenary Session. Minneapolis, MI 2006.

**Project:** RCD 04-129, ARCD

**Career Awardee:** Steven K. Dobscha, MD

---

25. Dobscha SK, Corson K, Cuiwik NM, Gerrity MS. Depression Treatment Preferences of VA Primary Care Patients [poster]. Academy of Psychosomatic Medicine National Meeting. Albuquerque, NM 2005.

**Project:** MHI 20-020, Improving Outcomes of Depression in Primary Care

**PI:** Steven K. Dobscha, MD

**Project:** RCD 04-129, ARCD

**Career Awardee:** Steven K. Dobscha, MD

- 
26. Dublin S, French B, G, Glazer NL, Wiggins KL, Lumley TS, Psaty BM, Smith NL, Heckbert SR. Obesity is associated with increased risk of new-onset atrial fibrillation [Poster]. American Heart Association 46th Annual Conference on Cardiovascular Disease Epidemiology and Prevention. Phoenix, AZ 2006.  
**Project:** TPA 61-029, Ambulatory Care Postdoctoral Fellowship (S. Dublin) **Trainee:** Sascha NMN Dublin, MD, PhD
- 
27. Estrada C, Ahluwalia J, Bierman A, Chin MH, Egede LE, Gerrity M, et al. How to be an outstanding reviewer for JGIM...and other journals [Workshop]. Society of General Internal Medicine 29th Annual Meeting. Los Angeles, CA 2006.  
**Project:** HFP 83-027, Northwest Center for Outcomes Research in Older Adults: A Center of Excellence **PI:** Martha Gerrity, MD MPH
- 
28. Fan VS. Preventing Future Hospitalizations for COPD [talk]. 5th Annual High Desert Pulmonary Conference 2006.  
**Project:** RCD 02-170, RCD **Career Awardee:** Vincent S. Fan, MD, MPH
- 
29. Fihn S, Lowy E, Rumsfeld JS, Sales A, Sun H, Fleming BB, Jesse R, Maynard C. The Prevalence and Outcomes of In-Hospital Acute Myocardial Infarction in the Department of Veterans Affairs Health System [abstract/poster]. 7th American Heart Association Scientific Forum. Washington, DC 2006.  
**Project:** IHD 98-001, QUERI on Ischemic Heart Disease **PI:** Greg C. Larsen, MD
- 
30. Fihn SD. Genomics in the VA [talk]. Center for Disease Control & Group Health Cooperative Genomics Conference. Seattle, WA 2005.  
**Project:** HFP 83-027, Northwest Center for Outcomes Research in Older Adults: A Center of Excellence **PI:** Stephan Fihn, MD MPH
- 
31. Fihn SD. Time Management and Update in General Internal Medicine [talk]. American College of Physicians Annual Session. Philadelphia, PA 2006.  
**Project:** HFP 83-027, Northwest Center for Outcomes Research in Older Adults: A Center of Excellence **PI:** Stephan Fihn, MD MPH
- 
32. Fihn SD. Update in General Internal Medicine and Meet-the-Professor Sessions [talk]. Society of General Internal Medicine 29th Annual Meeting. Los Angeles, CA 2006.  
**Project:** HFP 83-027, Northwest Center for Outcomes Research in Older Adults: A Center of Excellence **PI:** Stephan Fihn, MD MPH

---

33. Frank D, DeBenedetti A, Volk RJ, Williams EC, Kivlahan DR, Bradley K. Effectiveness of AUDIC-C as a Screening Test for Alcohol Misuse in Three Racial/Ethnic Groups [poster]. Society of General Internal Medicine 29th Annual Meeting. Los Angeles, CA 2006; 21: 45-46.

**Project:** R21AA14672, Evaluation of the AUDIT-C in a Primary Care Population

**PI:** Katharine A. Bradley, MD, MPH

**Project:** TPM 61-028, HSR&D MD Postdoctoral Fellowship (D. Frank)

**Trainee:** Danielle Frank, MD

---

34. Ganzini L. Artificial Nutrition and Hydration at the End of Life: ethics and Evidence [Key Note Speaker]. The Lessons of Teri Schiavo. Smith College, Massachusetts 2005.

**Project:** HFP 83-027, Northwest Center for Outcomes Research in Older Adults: A Center of Excellence

**PI:** Linda Ganzini, MD

---

35. Ganzini L. Oregon's Death with Dignity Act: Who Requests Assisted Suicide [talk]. Academy of Psychosomatic Medicine, Research Award and Plenary Lecture. Albuquerque, NM 2005.

**Project:** HFP 83-027, Northwest Center for Outcomes Research in Older Adults: A Center of Excellence

**PI:** Linda Ganzini, MD

---

36. Ganzini L. Oregon's Death with Dignity Act: Who chooses physician-assisted suicide? [talk]. American Academy of Hospice and Palliative Medicine Annual Assembly. Nashville, TN 2006.

**Project:** HFP 83-027, Northwest Center for Outcomes Research in Older Adults: A Center of Excellence

**PI:** Linda Ganzini, MD

---

37. Ganzini L. Care of Patients with Posttraumatic Stress disorder and Schizophrenia at the End of Life [talk]. American Academy of Hospice and Palliative Medicine Annual Assembly. Nashville, TN 2006.

**Project:** HFP 83-027, Northwest Center for Outcomes Research in Older Adults: A Center of Excellence

**PI:** Linda Ganzini, MD

---

38. Ganzini L. Controversies in Artificial Food and Hydration at the End of Life [talk]. American Medical Directors Association. Dallas, TX 2006.

**Project:** HFP 83-027, Northwest Center for Outcomes Research in Older Adults: A Center of Excellence

**PI:** Linda Ganzini, MD

---

39. Ganzini L. The Oregon Death with Dignity Act: Eight Years Experience [talk]. Canadian Palliative Care Association. Victoria, BC 2006.

**Project:** HFP 83-027, Northwest Center for Outcomes Research in Older Adults: A Center of Excellence

**PI:** Linda Ganzini, MD

---

- 
40. Ganzini L. The Effect of the Pharmaceutical Industry on Medical Education [talk]. Federal Pharmacy Conference. Tacoma, WA 2006.  
**Project:** HFP 83-027, Northwest Center for Outcomes Research in Older Adults: A Center of Excellence **PI:** Linda Ganzini, MD
- 
41. Ganzini L. Artificial Nutrition and Hydration at the End of Life: Ethics and Evidence [talk]. Oregon Geriatric Education Center Annual Conference. Portland, OR 2006.  
**Project:** HFP 83-027, Northwest Center for Outcomes Research in Older Adults: A Center of Excellence **PI:** Linda Ganzini, MD
- 
42. Ganzini L. Care of Patients with Chronic Mental Disorders at the End of Life [talk]. Statewide Palliative Care Conference. Beaverton, OR 2006.  
**Project:** HFP 83-027, Northwest Center for Outcomes Research in Older Adults: A Center of Excellence **PI:** Linda Ganzini, MD
- 
43. Gerrity M. Using Computers for Evidence-Based Medicine: Diagnosis [workshop]. American College of Physicians Annual Session. Philadelphia, PA 2006.  
**Project:** HFP 83-027, Northwest Center for Outcomes Research in Older Adults: A Center of Excellence **PI:** Martha Gerrity, MD MPH
- 
44. Gerrity M. Using Computers for Evidence-Based Medicine: Therapy [workshop]. American College of Physicians Annual Session. Philadelphia, PA 2006.  
**Project:** HFP 83-027, Northwest Center for Outcomes Research in Older Adults: A Center of Excellence **PI:** Martha Gerrity, MD MPH
- 
45. Gerrity M. Systematic Reviews of Educational Interventions: Meeting the Need for Evidence in Medical Education [Faculty in Medical Education]. Society of General Internal Medicine 29th Annual Meeting. Los Angeles, CA 2006.  
**Project:** HFP 83-027, Northwest Center for Outcomes Research in Older Adults: A Center of Excellence **PI:** Martha Gerrity, MD MPH
- 
46. Gerrity M. How to Practice Evidence Based Health Care [Faculty in Evidence-Based Health Care]. 6th Annual Rocky Mountain Workshop. Vail, CO 2006.  
**Project:** HFP 83-027, Northwest Center for Outcomes Research in Older Adults: A Center of Excellence **PI:** Martha Gerrity, MD MPH



- 
47. Glazer NL, Dublin S, Smith NL, French B, Jackson LA, Siscovick DS, Psaty BM, Heckbert SR. Newly detected atrial fibrillation and compliance with antithrombotic guidelines [poster]. American Heart Association 41st Annual Conference on Cardiovascular Disease Epidemiology and Prevention. Phoenix, AZ 2006.  
**Project:** TPA 61-029, Ambulatory Care Postdoctoral Fellowship (S. Dublin) **Trainee:** Sascha NMN Dublin, MD, PhD
- 
48. Greiner G, Lowy E, Maynard C, Sales A, Fihn S. A Comparison of Four AMI Mortality Risk Adjustment Models [poster]. VA HSR&D 24th Annual National Meeting. Arlington, VA 2006.  
**Project:** MRC 03-334, Cardiac Care Followup Clinical Study **PI:** Stephan D. Fihn, MD, MPH
- 
49. Greiner G, Sharp N, Li Y, Lowy E, Almenoff P, Sales A. Organizational Factors and ICU Patient Outcomes in VHA [poster]. VA HSR&D 24th Annual National Meeting. Arlington, VA 2006.  
**Project:** IIR 01-160, Nurse Staffing and Patient Outcomes in VA **PI:** Anne E. Sales, PhD, MSN, RN
- 
50. Greiner GT, Lowy E, Maynard C, Sales A, Fihn S. Comparison of Six Mortality Risk Adjustment Models for Acute Myocardial Infarction [abstract/poster]. 7th American Heart Association Scientific Forum. Washington, DC 2006.  
**Project:** MRC 03-334, Cardiac Care Followup Clinical Study **PI:** Stephan D. Fihn, MD, MPH
- 
51. Greiner GT, Sharp N, Lowy E, Almenoff P, Sales A. The Association Between Nursing and Other Inpatient Organizational Factors and Inpatient Mortality for Patients Experiencing an ICU Stay During Their Hospitalization in a VA [poster]. AcademyHealth 2006 Annual Research Meeting. Seattle, WA 2006.  
**Project:** IIR 01-160, Nurse Staffing and Patient Outcomes in VA **PI:** Anne E. Sales, PhD, MSN, RN
- 
52. Guihan M, Hedrick SC, Chapko MK, Manheim LM, Sullivan JH, Zhou A, Wang L. Providers in the Assisted Living Pilot Project [talk]. Gerontological Society of America 59th Annual Scientific Meeting. Orlando, FL 2005.  
**Project:** MRR 00-016, Assisted Living Pilot Evaluation **PI:** Susan C. Hedrick, PhD  
**Project:** RCS 91-403, RCS **Career Awardee:** Susan C. Hedrick, PhD
- 
53. Harel O, Zhou A. Multiple Imputation for Correcting Verification Bias in Estimating Sensitivity and Specificity [talk]. International Conference on Health Policy Research. Boston, MA 2005.  
**Project:** 1 R01 EB005829, Statistical Methods in Diagnostic Medicine **PI:** Xiao-Hua Andrew Zhou, PhD, MSc

---

54. Hawkins E, Baer JS, Correale TD, Kivlahan DR. Weekly IVR Assessments and Patient Retention in Substance Abuse Treatment [talk]. VA National Care Coordination/Telecare Leadership Forum. Denver, CO 2006.

**Project:** TPP 61-016, HSR&D PhD Postdoctoral Fellowship (E. Hawkins)

**Trainee:** Eric J. Hawkins, PhD

---

55. Hedrick SC, Guihan M, Chapko MK, Manheim L, Sullivan JH, Zhou A, Wang L. Outcomes of the Assisted Living Project: How Does Assisted Living Work in VA? [talk]. Gerontological Society of America 59th Annual Scientific Meeting. Orlando, FL 2005.

**Project:** MRR 00-016, Assisted Living Pilot Evaluation

**PI:** Susan C. Hedrick, PhD

**Project:** RCS 91-403, RCS

**Career Awardee:** Susan C. Hedrick, PhD

---

56. Hedrick SC, Yueh B, Fihn S. Improving Care for Chronically Ill Elderly Veterans [talk]. VA HSR&D 24th Annual National Meeting. Washington, DC 2006.

**Project:** MRR 00-016, Assisted Living Pilot Evaluation

**PI:** Susan C. Hedrick, PhD

**Project:** RCS 91-403, RCS

**Career Awardee:** Susan C. Hedrick, PhD

---

57. Helfrich CD, Sun H, Sales AE, Li YF, Fihn S. The Association of VHA Facilities' Organizational Culture to Time-to-EKG for Acute Coronary Syndrome Patients [poster]. AcademyHealth 2006 Annual Research Meeting. Seattle, WA 2006.

**Project:** LIP 61-514, Organizational Culture and the VA Cardiac Initiative

**PI:** Christian D. Helfrich, PhD, MPH

**Project:** MRC 03-334, Cardiac Care Followup Clinical Study

**PI:** Stephan D. Fihn, MD, MPH

**Project:** TPP 61-015, HSR&D PhD Postdoctoral Fellowship (C. Helfrich)

**Trainee:** Christian D. Helfrich, PhD, MPH

---

58. Houck J, Lohavanichbutr P, Yueh B, et al. Promotor Methylation Status of Tumor Suppressor and Cell Adhesion Genes in Oral Squamous Cell Carcinomas [talk]. AHNS Annual Meeting and Research Workshop on the Biology, Prevention and Treatment of Head and Neck Cancer. Chicago, IL 2006.

**Project:** R01 CA095419, Oral Cancer: Molecular Profiles and Clinical Outcomes

**PI:** Bevan Yueh, MD, MPH

---

59. Kinder LS, Katon WJ, Ludman E, Russo J, Simon G, Lin EH. Improving depression care in patients with diabetes and multiple complications [Poster]. Society of Behavioral Medicine Annual Scientific Sessions 2006.

**Project:** TPP 61-014, HSR&D PhD Postdoctoral Fellowship (L. Kinder)

**Trainee:** Leslie S. Kinder, PhD, MS

---

---

60. Kivlahan D, Malte C, Hawkins E, Baer J, Sloan K, Calsyn D, Saxon A. Health Status Changes with Onsite vs. Referral Primary Care for Veterans in Addictions Treatment [Talk]. VA HSR&D 24th Annual National Meeting. Arlington, VA 2006.

**Project:** SUI 99-109, Onsite versus Referral  
Models of Primary Care for Substance  
Abusing Patients

**PI:** Andrew J. Saxon, MD

---

61. Kivlahan DR. VA Quality Enhancement Research Initiative for Substance Use Disorders Treatment [talk]. American Psychological Association. New Orleans, LA 2006.

**Project:** SUB 98-000, QUERI on Substance  
Abuse

**PI:** John W. Finney, PhD

---

62. Kivlahan DR, Harris AH, Malte CA, Baer JS, Hawkins E, Calsyn DA, Saxon AJ. The Association of 3 Month Retention in SUD Specialty Care with 6 Month Abstinence: A Propensity Score Analysis [poster]. Research Society on Alcoholism Annual Meeting. Baltimore, MD 2006.

**Project:** SUI 99-109, Onsite versus Referral  
Models of Primary Care for Substance  
Abusing Patients

**PI:** Andrew J. Saxon, MD

**Project:** TPP 61-016, HSR&D PhD Postdoctoral  
Fellowship (E. Hawkins)

**Trainee:** Eric J. Hawkins, PhD

---

63. Kivlahan DR, Jones E, Trafton J, Hawley G, Cutler F, Ripley B, Schaefer J. Geographic Information Analyses to Guide Substance Use Disorder Treatment Planning in the Veterans Health Administration [talk]. IDA/Association of American Geographers 'Geography and Drug Addiction' Symposium. Chicago, IL 2006.

**Project:** HFP 83-027, Northwest Center for  
Outcomes Research in Older Adults: A  
Center of Excellence

**PI:** Daniel Kivlahan, PhD

---

64. Koehler E, Abbott R, Bauchaine T, Dawson G, Lord C, Munson J, Rogers S, Sigman M, Zhou A. Latent Class Structure of IQ in Preschool Children with Autism [talk]. 6th International Conference on Health Policy Research. Boston, MA 2005.

**Project:** P01 HD34565, Neurobiology and  
Genetics of Autism

**PI:** Xiao-Hua Andrew Zhou, PhD,  
MSc

---

65. Lemaster JW, Reiber GE. Weight-bearing Activity and Fall Risk in People with Diabetic Foot Problems [abstract]. American Diabetes Association 66th Scientific Sessions. Washington, DC 2006.

**Project:** RCS 98-353, RCS

**Career Awardee:** Gayle E. Reiber, MPH, PhD

---

- 
66. Li Y, Rick C, Charns M, Buffum M, Meterko M, Lowy E, Collins B, Alt-White A. Value and Challenge in Measuring and Managing Staffing and Other Nursing Factors in Acute Care [workshop]. VA HSR&D 24th Annual National Meeting. Arlington, VA 2006.
- Project:** IIR 01-160, Nurse Staffing and Patient Outcomes in VA **PI:** Anne E. Sales, PhD, MSN, RN
- Project:** MRC 03-067, VA Nursing Outcomes Database Project **PI:** Anne E. Sales, PhD, MSN, RN
- 
67. Li YF, Sharp ND, Greiner GT, Lowy E, Liu CF, Sales AE. The Relationship between Patient Satisfaction and Inpatient Nursing Care [poster]. AcademyHealth 2006 Annual Research Meeting. Seattle, WA 2006.
- Project:** IIR 01-160, Nurse Staffing and Patient Outcomes in VA **PI:** Anne E. Sales, PhD, MSN, RN
- 
68. Liu C, Perkins M, Chapko M, Fortney J, Maciejewski M. Improving Access to Primary Care Services: Open New Clinics or Contract with Community Providers? [talk]. VA HSR&D 24th Annual National Meeting. Arlington, VA 2006.
- Project:** IIR 20-005, Evaluation of Community Based Outpatient Clinic Costs Using DSS Data **PI:** Matthew L. Maciejewski, PhD
- 
69. Liu CF. Comparisons of Utilization and Costs among Women Veterans Obtaining Primary Care in Community clinics and Veterans Affairs (VA) Medical Centers [talk]. American Society for Health Economists. Madison, WI 2006.
- Project:** IIR 04-036, Impact of Practice Structure on the Quality of Care for Women Veterans **PI:** Elizabeth M. Yano, PhD, MSPH
- 
70. Liu CF, Forney J, Vivell S, Vollen K, Raney W, Revay B. Care Manager Caseload Capacity and Activities: Time Tracking Results from Two Depression Collaborative Care Projects [poster]. AcademyHealth 2006 Annual Research Meeting. Seattle, WA 2006.
- Project:** MNT 02-209, Cost & Value of Evidence Based Solutions for Depression (COVES) **PI:** JoAnn E. Kirchner, MD
- 
71. Liu CF, Sales AE, Li YF, Greiner GT, Sharp ND, Lowy E. Association Between Nurse Staffing and Length of Stay in VHA [poster]. AcademyHealth 2006 Annual Research Meeting. Seattle, WA 2006.
- Project:** IIR 01-160, Nurse Staffing and Patient Outcomes in VA **PI:** Anne E. Sales, PhD, MSN, RN

- 
72. Liu G, Kang R, Drennan W, Longnion J, Ruffin C, Worman T, Yueh B, Rubinstein J. UW Clinical Assessment of Music Perception (UW-CAMP): Test Development and Preliminary Results [poster]. American Auditory Society Bulletin. Scottsdale, AZ 2006; 31:.
- Project:** HFP 83-027, Northwest Center for Outcomes Research in Older Adults: A Center of Excellence **PI:** Bevan Yueh, MD
- 
73. Lohavanichbutr P, Houck J, Fan W, Yueh B, et al. Gene Expression Profiling Indicates Dysregulation of Distinct Cellular Pathways in HPV Positive and HPV Negative Oral Squamous Cell Carcinomas [abstract]. 97th American Association for Cancer Research Annual Meeting. Washington, DC 2006.
- Project:** R01 CA095419, Oral Cancer: Molecular Profiles and Clinical Outcomes **PI:** Bevan Yueh, MD, MPH
- 
74. Lovasi GS, Lemaitre RN, Siscovick DS, Lumley TS, Bis JC, Dublin S, Smith NL, Heckbert SR, Psaty BM. Amount of leisure-time physical activity and risk of nonfatal myocardial infarction [poster]. American Heart Association 41st Annual Conference on Cardiovascular Disease Epidemiology and Prevention. Phoenix, AZ 2006.
- Project:** TPA 61-029, Ambulatory Care Postdoctoral Fellowship (S. Dublin) **Trainee:** Sascha NMN Dublin, MD, PhD
- 
75. Lowy E, Greiner G, Sales A, Maynard C, Fihn S. Race or Region? Examining Race Disparities in AMI Mortality in VHA [poster]. VA HSR&D 24th Annual National Meeting. Arlington, VA 2006.
- Project:** MRC 03-334, Cardiac Care Followup Clinical Study **PI:** Stephan D. Fihn, MD, MPH
- 
76. Lowy E, Greiner GT, Sales A, Maynard C, Fihn S. Race, Race, and Mortality Among Veterans with Acute Myocardial Infarction [abstract/talk]. 7th American Heart Association Scientific Forum. Washington, DC 2006.
- Project:** MRC 03-334, Cardiac Care Followup Clinical Study **PI:** Stephan D. Fihn, MD, MPH
- 
77. Lowy E, Sales AE, Li YF, Sharp ND, Greiner GT. Association of Nurse Staffing with Surgical Patient Mortality in VHA Acute Care Units [poster]. AcademyHealth 2006 Annual Research Meeting. Seattle, WA 2006.
- Project:** IIR 01-160, Nurse Staffing and Patient Outcomes in VA **PI:** Anne E. Sales, PhD, MSN, RN
- 
78. Lowy E, Sales AE, Li YF, Sharp ND, Greiner GT. Association between Nurse Staffing and Education and Inpatient Mortality in VHA. Sigma Theta Tau International Congress. Montreal, Quebec, Canada 2006.
- Project:** IIR 01-160, Nurse Staffing and Patient Outcomes in VA **PI:** Anne E. Sales, PhD, MSN, RN
-

- 
79. Maciejewski ML, Zhou XH. Two Approaches to Adjusting for Selection Bias in Cross-sectional Data: Instrumental Variables and Propensity Score [talk]. International Conference on Health Policy Research. Boston, MA 2005.  
**Project:** 1 R01 HS10230-01A2, Selection Bias by Medicare Beneficiaries with Diabetes **PI:** Matthew L. Maciejewski, PhD
- 
80. Maynard C, Lowy E, Rumsfeld J, Sales A, Sun H, Kopjar B, Fleming B, Jesse R, Fihn S. The Prevalence and Outcomes of In-Hospital Acute Myocardial Infarction in the VHA [Poster]. VA HSR&D 24th Annual National Meeting. Arlington, VA 2006.  
**Project:** MRC 03-334, Cardiac Care Followup Clinical Study **PI:** Stephan D. Fihn, MD, MPH
- 
81. McDermott K, Sales A, Lowy E, Helfrich CD, Fihn S. Factors Associated with Reperfusion for ST Segment Elevation MI Patients in VHA Facilities [Talk]. VA HSR&D 24th Annual National Meeting. Arlington, VA 2006.  
**Project:** MRC 03-334, Cardiac Care Followup Clinical Study **PI:** Stephan D. Fihn, MD, MPH
- 
82. Misono S, Fann J, Weiss N, Yueh B. Suicide Rates in H&N Cancer Patients [talk]. AHNS Annual Meeting and Research Workshop on the Biology, Prevention and Treatment of Head and Neck Cancer. Chicago, IL 2006.  
**Project:** HFP 83-027, Northwest Center for Outcomes Research in Older Adults: A Center of Excellence **PI:** Bevan Yueh, MD
- 
83. Nelson K. The Burden of Obesity Among a National Probability Sample of Veterans [talk]. Society of General Internal Medicine 29th Annual Meeting. Los Angeles, CA 2006; 21: 137 138.  
**Project:** IIR 05-121, Obesity Care Practices in the Veterans Health Administration **PI:** Polly Hitchcock Noel, PhD, MA, BA
- 
84. Nelson K. The Burden of Obesity among a National Probability Sample of Veterans [poster]. AcademyHealth 2006 Annual Research Meeting. Seattle, WA 2006.  
**Project:** IIR 05-121, Obesity Care Practices in the Veterans Health Administration **PI:** Polly Hitchcock Noel, PhD, MA, BA
- 
85. Nelson K, McFarland LV, Reiber GE. Assessing Lifestyle and Self-Management Practices among Veterans with Diabetes and Poor Glycemic Control [abstract]. Society of General Internal Medicine 29th Annual Meeting. Los Angeles, CA 2006; 21: 15.  
**Project:** RCS 98-353, RCS **Career Awardee:** Gayle E. Reiber, MPH, PhD

- 
86. Nelson K, Starkebaum GA, Reiber GE. Veterans Using and Uninsured Veterans not Using VA Health Care [talk]. AcademyHealth 2006 Annual Research Meeting. Seattle, WA 2006.  
**Project:** HFP 83-027, Northwest Center for Outcomes Research in Older Adults: A Center of Excellence  
**PI:** Karin Nelson, MD MS
- 
87. Nelson KM. The burden of obesity among a national probability sample of veterans [poster]. CDC Diabetes Translation and Obesity Conference. Denver, CO 2006.  
**Project:** IIR 05-121, Obesity Care Practices in the Veterans Health Administration  
**PI:** Polly Hitchcock Noel, PhD, MA, BA
- 
88. Omoro S, Fann J, Weymuller EA, Marcharia IM, Yueh B. Quality of Life Priorities in Kenyan vs American H&N Cancer Patients [poster]. AHNS Annual Meeting and Research Workshop on the Biology, Prevention and Treatment of Head and Neck Cancer. Chicago, IL 2006.  
**Project:** HFP 83-027, Northwest Center for Outcomes Research in Older Adults: A Center of Excellence  
**PI:** Bevan Yueh, MD
- 
89. Pineros S, Sales AE, Pineros V, McDonell M, Maynard C, Lehmann K, Fihn SD. An Evaluation of a Patient Education Initiative in VHA: Time is Life for Heart Attack [abstract/poster]. 7th American Heart Association Scientific Forum. Washington, DC 2006.  
**Project:** MRC 03-334, Cardiac Care Followup Clinical Study  
**PI:** Stephan D. Fihn, MD, MPH
- 
90. Rajan M, Pogach L, Tseng CL, Reiber GE, Johnston M. Facility Level Variation in Patient Footcare Education: Implications for Performance Measurement [Poster]. VA HSR&D 24th Annual National Meeting. Arlington, VA 2006.  
**Project:** RCS 98-353, RCS  
**Career Awardee:** Gayle E. Reiber, MPH, PhD
- 
91. Raugi G, Reiber G, Rajan M, Pogach L. Identifying Foot Care Needs in Diverse High-Risk Veterans [Poster]. VA HSR&D 24th Annual National Meeting. Arlington, VA 2006.  
**Project:** RCS 98-353, RCS  
**Career Awardee:** Gayle E. Reiber, MPH, PhD
- 
92. Rousseau C, Ioannou G, Todd-Stenberg J, Sloan K, Dominitz J. Racial Differences in the Evaluation and Treatment of Hepatitis C: A Retrospective Cohort Study [talk]. HSR&D Annual Meeting - Implementing Equity: Making Research Work for Diverse Veteran Populations. Arlington, VA 2006.  
**Project:** TPP 61-012, HSR&D PhD Postdoctoral Fellowship  
**Trainee:** Christine M. Rousseau, PhD, MS
- 
93. Saha S. Managing Career and Time: A work in progress [talk]. VA HSR&D 24th Annual National Meeting. Washington, DC 2006.  
**Project:** RCD 00-028, RCD  
**Career Awardee:** Somnath Saha, MD, MPH
-



- 
94. Saha S, Shipman S. The Evidence Base for Diversity in the Health Professions [talk]. AcademyHealth 2006 Annual Research Meeting. Seattle, WA 2006.  
**Project:** RCD 00-028, RCD **Career Awardee:** Somnath Saha, MD, MPH
- 
95. Sales A. Lessons from the VA EHR: Applications to nursing care [talk]. AcademyHealth 2006 Annual Research Meeting. Seattle, WA 2006.  
**Project:** MRC 03-067, VA Nursing Outcomes Database Project **PI:** Anne E. Sales, PhD, MSN, RN
- 
96. Sales A, Greiner G, Sharp N, Li Y, Lowy E, Liu C, Sochalski J, Mitchell P, Needleman J. Association Between Nurse Staffing and Education and Inpatient Mortality in VHA [Poster]. VA HSR&D 24th Annual National Meeting. Arlington, VA 2006.  
**Project:** IIR 01-160, Nurse Staffing and Patient Outcomes in VA **PI:** Anne E. Sales, PhD, MSN, RN
- 
97. Sales A, Li YF, Greiner GT, Lowy E, Liu CF. Association of Unit-level Perceptions of Work Environment with Patient Mortality in VHA Acute Care Units [poster]. AcademyHealth 2006 Annual Research Meeting. Seattle, WA 2006.  
**Project:** IIR 01-160, Nurse Staffing and Patient Outcomes in VA **PI:** Anne E. Sales, PhD, MSN, RN
- 
98. Sales A, Maynard C, Sun H, Fihn S. Race and the Use of Percutaneous Coronary Intervention in Veterans with Acute Myocardial Infarction [abstract/poster]. 7th American Heart Association Scientific Forum. Washington, DC 2006.  
**Project:** MRC 03-334, Cardiac Care Followup Clinical Study **PI:** Stephan D. Fihn, MD, MPH
- 
99. Sales A, McDermott K, Helfrich CD, Lowy E, Greiner GT, Lehmann K, Fihn S. Factors Associated with Reperfusion for ST Segment Elevation Myocardial Infarction Patients in VHA Facilities [abstract/poster]. 7th American Heart Association Scientific Forum. Washington, DC 2006.  
**Project:** MRC 03-334, Cardiac Care Followup Clinical Study **PI:** Stephan D. Fihn, MD, MPH
- 
100. Sales AE. Nurse staffing and skill mix and association with cost in the Veterans Health Administration [talk]. First Inaugural Conference of the American Society of Health Economists. Madison, WI 2006.  
**Project:** IIR 01-160, Nurse Staffing and Patient Outcomes in VA **PI:** Anne E. Sales, PhD, MSN, RN



- 
101. Sampson JN, Kestenbaum B, Rudser KD, Emerson SS, Seliger SL, Dalrymple LS, deBoer IH, Young B. Effect of Diabetes on Renal Disease Progression during the Early Stages of Chronic Kidney Disease [poster]. American Society of Nephrology Meeting. Philadelphia, PA 2005.  
**Project:** TPA 61-030, Ambulatory Care Postdoctoral Fellowship (L. Dalrymple) **Trainee:** Lorien S. Dalrymple, MD
- 
102. Sloan K, Burgess J, Zhou C, Fishman P, Zhou X, Wang L. Where Best to Invest? Model Information vs. Model Selection when Evaluating Facility Performance [Talk]. VA HSR&D 24th Annual National Meeting. Arlington, VA 2006.  
**Project:** IIR 00-077, Effects of Outlier Identification Strategy on Facility Profiling **PI:** Kevin L. Sloan, MD
- 
103. Sloan KL, Burgess JF Jr, Zhou XH, Zhou C, Fishman P, Wang L. Model Selection versus Information Selection for Performance Evaluation: Where Best to Invest? [talk]. 6th International Conference on Health Policy Research. Boston, MA 2005.  
**Project:** HFP 83-027, Northwest Center for Outcomes Research in Older Adults: A Center of Excellence **PI:** Kevin L. Sloan, MD
- 
104. Sloan KL, Davison J, Chapko MK, Dominitz JA. Hepatitis C Seroconversion is Still Occurring in Veterans [poster]. CDC National Viral Hepatitis Prevention Conference. Washington, DC 2005.  
**Project:** HFP 83-027, Northwest Center for Outcomes Research in Older Adults: A Center of Excellence **PI:** Kevin Sloan, MD
- 
105. Steele BG, Belza B, Cain K, Coppersmith J, Howard J, Lakshminarayan S. The impact of chronic obstructive pulmonary disease exacerbation on pulmonary rehabilitation participation and function outcomes [abstract]. Proceedings of the American Thoracic Society. San Diego, CA 2006; 3: A219.  
**Project:** NRI 98-194, Promoting Activity and Exercise in Chronic Pulmonary Disease: An Intervention Study **PI:** Bonnie G. Steele, PhD, RN
- 
106. Straits-Troster KA, Davison J, Kivlahan D, Curry S, Wingert M, Dierperink E, Hauser P, et al. Improving Hepatitis C Care for Veterans: Development of a Brief Alcohol Toolkit [talk]. National Viral Hepatitis Prevention Conference. Washington, DC 2005.  
**Project:** HFP 83-027, Northwest Center for Outcomes Research in Older Adults: A Center of Excellence **PI:** Daniel Kivlahan, PhD
- 
107. Sullivan NM, Morrison E, Kivlahan DR, Dominitz J. Experience Integrating HCV Education and Treatment in Substance Abuse Clinic [talk]. National Viral Hepatitis Prevention Conference. Washington, DC 2005.  
**Project:** HFP 83-027, Northwest Center for Outcomes Research in Older Adults: A Center of Excellence **PI:** Daniel Kivlahan, PhD

- 
108. Sun H, Maynard C, Sales A, Fihn S. Race and the Use of Percutaneous Coronary Intervention in Veterans with Acute Myocardial Infarction [Poster]. VA HSR&D 24th Annual National Meeting. Arlington, VA 2006.
- Project:** MRC 03-334, Cardiac Care Followup Clinical Study
- PI:** Stephan D. Fihn, MD, MPH
- 
109. Trafton J, Ripley B, Ramsel D, Kivlahan D, Schaefer J. Geographic Information System Analyses: Determining How Travel-Distance and Travel-Time Impact Substance Use Disorder (SUD) Treatment [talk]. NIDA/Association of American Geographers 'Geography and Drug Addiction' Symposium. Chicago, IL 2006.
- Project:** HFP 83-027, Northwest Center for Outcomes Research in Older Adults: A Center of Excellence
- PI:** Daniel Kivlahan, PhD
- 
110. Trafton J, Ripley B, Ramsel D, Kivlahan D, Schaefer J. Geographic Information System Analyses: Evaluating Whether Increased Access to Specialty Care Impacts Substance Use Disorder (SUD) Treatment Retention [talk]. NIDA/Association of American Geographers 'Geography and Drug Addiction' Symposium. Chicago, IL 2006.
- Project:** HFP 83-027, Northwest Center for Outcomes Research in Older Adults: A Center of Excellence
- PI:** Daniel Kivlahan, PhD
- 
111. Wallace C. Evaluating Facilitation Activities in a VA QUERI Implementation Project [poster]. AcademyHealth 2006 Annual Research Meeting. Seattle, WA 2006.
- Project:** SCT 01-169, Increasing Influenza and Pneumococcal Vaccination in the VA SCI&D Population
- PI:** Frances M. Weaver, BA, MA, PhD
- 
112. Wang S, Liu CF, Chapko MK, Perkins M, Maciejewski ML. Racial Disparities in Quality of Preventive Care at VAMCs, Contract CBOC, and VA-staffed CBOC [poster]. AcademyHealth 2006 Annual Research Meeting. Seattle, WA 2006.
- Project:** IIR 20-005, Evaluation of Community Based Outpatient Clinic Costs Using DSS Data
- PI:** Matthew L. Maciejewski, PhD
- 
113. Wheeler C, Maynard C, Bowen J. Women Veterans and Outcomes after Acute Myocardial Infarction [abstract]. Society of General Internal Medicine 29th Annual Meeting. Los Angeles, CA 2006; 21: 165-166.
- Project:** IHD 98-001, QUERI on Ischemic Heart Disease
- PI:** Greg C. Larsen, MD

---

114. Whittle J, Rubenstein LV, Kirchner J, Clark K, McDougall S, Gerrity M. Challenges in implementing evidence based care models [workshop]. Society of General Internal Medicine 29th Annual Meeting. Los Angeles, CA 2006.

**Project:** HFP 83-027, Northwest Center for Outcomes Research in Older Adults: A Center of Excellence

**PI:** Martha Gerrity, MD MPH

---

115. Young BA, Katon W, Lin EH, Ciechanowski P, Simon G, Kinder L, Ludman E, Boyko EJ, Von Korff M. When is Equal Access Not Equal Access to Health Care? [poster]. American Diabetes Association 66th Scientific Sessions. Washington, DC 2006.

**Project:** TPA 61-019, Ambulatory Care Postdoctoral Fellow

**Trainee:** Bessie A. Young, MD, MPH

**Project:** TPP 61-014, HSR&D PhD Postdoctoral Fellowship (L. Kinder)

**Trainee:** Leslie S. Kinder, PhD, MS

---

116. Young BA, Katon W, Von Korff M, Lin EH, Simon G, Ciechanowski P, Ludman E, Kinder L, Boyko EJ. Diabetes Complications Severity Index and Risk of Mortality, Hospitalization and Health Care Utilization [poster]. American Diabetes Association 66th Scientific Sessions. Washington, DC 2006.

**Project:** TPA 61-019, Ambulatory Care Postdoctoral Fellow

**Trainee:** Bessie A. Young, MD, MPH

**Project:** TPP 61-014, HSR&D PhD Postdoctoral Fellowship (L. Kinder)

**Trainee:** Leslie S. Kinder, PhD, MS

---

117. Young BA, Von Korff M, Lin EH, Everson-Stewart S, Simon G, Ciechanowski P, Kinder L, Boyko EJ. Diet and Exercise and Risk of Endstage Renal Disease in Diabetic Primary Care Population: The Pathways Study [poster]. American Diabetes Association 66th Scientific Sessions. Washington, DC 2006.

**Project:** TPA 61-019, Ambulatory Care Postdoctoral Fellow

**Trainee:** Bessie A. Young, MD, MPH

**Project:** TPP 61-014, HSR&D PhD Postdoctoral Fellowship (L. Kinder)

**Trainee:** Leslie S. Kinder, PhD, MS

---

118. Zerzan J. Getting the Most Out of Your Mentor: A Guide to Becoming a Successful Mentee [workshop]. Society of General Internal Medicine Annual Meeting 2006.

**Project:** RWJ 61-034, Robert Wood Johnson Clinical Scholars Program (J. Zerzan)

**Trainee:** Judy T. Zerzan, MD, MPH

---

119. Zerzan J. Demystifying the NIH Application Process [workshop]. Society of General Internal Medicine Annual Meeting 2006.

**Project:** RWJ 61-034, Robert Wood Johnson Clinical Scholars Program (J. Zerzan)

**Trainee:** Judy T. Zerzan, MD, MPH

- 
120. Zerzan J. Trends and Geographic Variation of Opiate Medication Use in State Medicaid Fee-For-Service Programs 1996-2002 [poster]. Society of General Internal Medicine Annual Meeting 2006.  
**Project:** RWJ 61-034, Robert Wood Johnson Clinical Scholars Program (J. Zerzan) **Trainee:** Judy T. Zerzan, MD, MPH
- 
121. Zerzan J. Getting the Most Out of Your Mentor: A Guide to Becoming a Successful Mentee [workshop]. Society of General Internal Medicine 29th Annual Meeting. Los Angeles, CA 2006.  
**Project:** RWJ 61-034, Robert Wood Johnson Clinical Scholars Program (J. Zerzan) **Trainee:** Judy T. Zerzan, MD, MPH
- 
122. Zerzan J, Morden NE, Soumerai S, Ross-Degnan D, Roughhead E, Simoni-Wastilia L, Sullivan SD. Trends and Geographic Variation of Opiate Medication Use in State Medicaid Fee-for-Service Programs 1996-2002 [abstract]. Society of General Internal Medicine 29th Annual Meeting. Los Angeles, CA 2006; 21: 153.  
**Project:** RWJ 61-034, Robert Wood Johnson Clinical Scholars Program (J. Zerzan) **Trainee:** Judy T. Zerzan, MD, MPH
- 
123. Zerzan J, Morden NE, Soumerai S, Ross-Degnan D, Roughhead E, Sullivan SD. Trends and Geographic Variation of Opiate Medication Use in State Medicaid Fee-For-Service Programs 1996-2003 [poster]. AcademyHealth 2006 Annual Research Meeting. Seattle, WA 2006.  
**Project:** RWJ 61-034, Robert Wood Johnson Clinical Scholars Program (J. Zerzan) **Trainee:** Judy T. Zerzan, MD, MPH
- 
124. Zhou A. A New, Nonparametric Method for Predicting Health Care costs with Heteroscedasticity in Risk-adjustment Models [talk]. 6th International Conference on Health Policy Research. Boston, MA 2005.  
**Project:** ECI 03-206, New Statistical Methods for Analyzing Veteran's Health Care Costs **PI:** Xiao-Hua Andrew Zhou, PhD, MSc
- 
125. Zhou XH. Semi-Parametric Maximum Likelihood Estimation of ROC Curves [talk]. Department of Epidemiology and Biostatistics, University of California. San Francisco, CA 2005.  
**Project:** 1 R01 EB005829, Statistical Methods in Diagnostic Medicine **PI:** Xiao-Hua Andrew Zhou, PhD, MSc
- 
126. Zhou XH. Double Semiparametric ROC Regression Models [talk]. Department of Biostatistics and Applied Mathematics, M D Anderson Cancer Center, University of Texas. Houston, TX 2006.  
**Project:** 1 R01 EB005829, Statistical Methods in Diagnostic Medicine **PI:** Xiao-Hua Andrew Zhou, PhD, MSc
- 
127. Zhou XH. Optimal Estimation of ROC Curves of Continuous-scale Tests [talk]. International Biometric Society. Tampa, FL 2006.  
**Project:** 1 R01 EB005829, Statistical Methods in Diagnostic Medicine **PI:** Xiao-Hua Andrew Zhou, PhD, MSc

---

128. Zhou XH. Nonparametric Transformation Models with Heteroscedastic Variance [talk]. School of Statistics, University of Minnesota. Minnesota, MI 2006.

**Project:** ECI 03-206, New Statistical Methods for Analyzing Veteran's Health Care Costs

**PI:** Xiao-Hua Andrew Zhou, PhD, MSc

---

129. Zhou XH. New Statistical Methods in Diagnostic Medicine [talk]. International Conference on Frontiers of Statistics - Biostatistics and Bioinformatics. Changchun, China 2006.

**Project:** 1 R01 EB005829, Statistical Methods in Diagnostic Medicine

**PI:** Xiao-Hua Andrew Zhou, PhD, MSc

---

130. Zhou XH. New Statistical Methods in Health Economics [talk]. International Conference on Design of Experiments and Its Applications. Tianjin, China 2006.

**Project:** ECI 03-206, New Statistical Methods for Analyzing Veteran's Health Care Costs

**PI:** Xiao-Hua Andrew Zhou, PhD, MSc

## Journal Other

- 
1. Bradley KA, Sherman SE. Measuring Quality of Care for Smoking and Alcohol Counseling in the VA. FORUM Society of General Internal Medicine 2006; .  
**Project:** SUB 03-265, Supplemental QLP Substance Abuse **PI:** John W. Finney, PhD  
**Project:** SUB 04-394, Substance Abuse QUERI LIPs **PI:** Katharine A. Bradley, MD, MPH  
**Project:** SUB 98-000, QUERI on Substance Abuse **PI:** John W. Finney, PhD

---

  2. Fihn SD. Moving implementation science forward [editorial]. Journal of General Internal Medicine 2006; 21 Suppl 2: S65-S66.  
**Project:** HFP 83-027, Northwest Center for Outcomes Research in Older Adults: A Center of Excellence **PI:** Stephan Fihn, MD MPH

---

  3. Ganzini L, Brouns M, Heieh YC. Physician-Assisted Suicide among Oregon Cancer Patients: A Fading Issue [Response to CC Denny and EJ Emanuel]. Journal of Clinical Ethics 2006; 17: 43-45.  
**Project:** HFP 83-027, Northwest Center for Outcomes Research in Older Adults: A Center of Excellence **PI:** Linda Ganzini, MD

---

  4. Kiefe CI, Sales A. A state-of-the art conference on implementing evidence in health care: Reasons and recommendations [editorial]. Journal of General Internal Medicine 2006; 21 Suppl 2: S67-S70.  
**Project:** IHD 98-001, QUERI on Ischemic Heart Disease **PI:** Greg C. Larsen, MD

---

  5. Reiber GE, Raugi GJ. Preventing foot ulcers and amputations in diabetes [Editorial]. Lancet 2005; 366: 1676-1677.  
**Project:** RCS 98-353, RCS **Career Awardee:** Gayle E. Reiber, MPH, PhD

---

  6. Sales AE, Helfrich CD. Value in development of complex interventions [Invited Commentary]. American Journal of Managed Care 2005; 12: 253-254.  
**Project:** TPP 61-015, HSR&D PhD Postdoctoral Fellowship (C. Helfrich) **Trainee:** Christian D. Helfrich, PhD, MPH

## HSR&D Article

---

1. Bradley K, Kivlahan D, Williams EC, Hawkins E, Achtmeyer CE. Measuring Quality of Care for VA Patients Who Misuse Alcohol. Hsr&D Forum 2006; 4-8.

**Project:** SUB 03-265, Supplemental QLP  
Substance Abuse

**PI:** John W. Finney, PhD

**Project:** SUB 04-394, Substance Abuse QUERI  
LIPs

**PI:** Katharine A. Bradley, MD, MPH

**Project:** SUB 98-000, QUERI on Substance  
Abuse

**PI:** John W. Finney, PhD

## 8.1 National and Regional Leadership Roles (Table 4)

### Seattle Center of Excellence National and Regional Leadership Roles, FY2006

Name	Organization	Org Type*	Role	VA Sponsored	VA Contribution**
D. Au MD MS	American Thoracic Society	AS	Chair, Behavioral Sciences Assembly Planning Committee	No	4
	American Thoracic Society	AS	Chair, Behavioral Sciences Assembly, Program Committee	No	4
	American Thoracic Society	AS	Member, Membership Committee	No	4
	National Committee for Quality Assurance	EC	Measurement Assessment Team for COPD	No	6
	National Committee for Quality Assurance	EC	member, Measurement Assessment Team for COPD	No	3
	American Lung Association	RG	Member, Fellowship Committee	No	4
E. Boyko MD MPH	American Diabetes Association	EB	Editorial Advisory Board, Epidemiology and Statistics Council Representative	No	5
	American Journal of Epidemiology	EB	Associate Editor	No	5
	Diabetes Care	EB	Member, Editorial Board, 2003-2006	No	5
	Obesity Research	EB	Member, Editorial Board, 2003-	No	5
	National Center for Health Statistics	EC	Technical Adviser, National Health and Nutrition Examination Survey	No	3
	NIDDK/National Institutes of Health	EC	Member, National Diabetes Data Group Advisory Committee	No	5
	NIH	EC	Member, Clinical Translation Science Award (CTSA) Planning Committee, 2006-	No	4
	Department of Veterans Affairs	RG	Member, EPID (Epidemiology) Merit Review Panel	Yes	1
	National Institutes of Health	RG	Chair, Kidney, Nutrition, Obesity, and Diabetes (KNOD) Epidemiology Study Section	No	5
	Department of Veterans Affairs	VAN	Member, Provider Profiling Steering Committee	Yes	2
	Department of Veterans Affairs	VAN	Director, Epidemiologic Research and Information Center (ERIC)	Yes	1,6
	Department of Veterans Affairs	VAN	Member, Scientific Advisory Committee, Multiple Sclerosis Center of Excellence West	Yes	2
	Department of Veterans Affairs	VAN	Member, HHS Obesity and Diabetes Prevention Work Group, Evaluation Subcommittee	Yes	1,2
	Department of Veterans Affairs	VAR	Director, Vietnam Era Twin Registry	Yes	2
	Department of Veterans Affairs	VAR	Member, Northwest Hepatitis C Resource Center Community Advisory Board	Yes	2
K. Bradley MD MPH	Society of General Internal Medicine	AS	Member, Research Committee	No	5
	Robert Wood Johnson Foundation	RG	Grant Reviewer, Substance Abuse Policy Program	No	6
	Department of Veterans Affairs	VAN	Member, Executive Committee, Substance Use Disorders, Quality Enhancement Research Initiative (QUERI)	Yes	2,3
	Department of Veterans Affairs	VAN	Co-Clinical Coordinator, SUD QUERI	Yes	2,3
C. Bryson MD MS	American Heart Association	RG	Member, Council of Epidemiology and Prevention	No	6



Name	Organization	Org Type*	Role	VA Sponsored	VA Contribution**
E. Chaney PhD	Department of Veterans Affairs	CL	Member, VA Mental Health Strategic Plan Workgroup: Medical/Surgical Co-Morbidities Subgroup	Yes	2,6
	Department of Veterans Affairs	EC	Member, MyHealtheVet Mental Health Disease Management Group	Yes	3
	Human Subjects Review Committee, University of Washington	RG	Co-Chair, Review Committee C	No	5
	Department of Veterans Affairs	VAN	Member, Management and Implementation Group, VA HSR&D Scientific Review and Evaluation Board	Yes	1
	Department of Veterans Affairs	VAN	Member, External Advisory Board for VHA HSR&D HIV QUERI HI-TIDES Study	Yes	1
	Department of Veterans Affairs	VAN	Member, Diabetes QUERI Executive Committee	Yes	1
	Department of Veterans Affairs	VAR	Member, Depression Subgroup, VA HSR&D Mental Health Quality Enhancement Research Initiative	Yes	1
M. Chapko PhD	Department of Veteran Affairs	VAN	Member, Scientific Merit Review Board, HSR&D Service	Yes	6
S. Dobscha MD	Department of Veterans Affairs	VAN	Member, National VHA Pain Research Workgroup	Yes	1
	Department of Veterans Affairs	VAN	Member, National VA Substance Use Disorder QUERI Alcohol Misuse Workgroup	Yes	1
	Department of Veterans Affairs	VAN	Co-Chair, National VA Co-occurring Alcohol Misuse and Depressive Disorders QUERI Workgroup	Yes	1
	Department of Veterans Affairs	VAR	VISN 20 Pain Management ACA Collaborative Special Contribution Award - 2006	Yes	3
	Department of Veterans Affairs	VAR	Member, VA VISN 20 ACA Pain Management Collaborative Workgroup	Yes	1
V. Fan MD MPH	American Thoracic Society	CL	Reviewer, Program Committee, Behavioral Sciences Assembly	No	5

Name	Organization	Org Type*	Role	VA Sponsored	VA Contribution**
S. Fihn MD MPH	Society of General Internal Medicine	AS	Awardee, Elnora M. Rhodes Service Award, 2006	No	6
	American Association of Medical Colleges	CL	Member, Advisory Panel on Research	No	4
	American College of Physicians	CL	Member, Medical Services Committee	No	6
	American Heart Association/American College of Cardiology/American College of Physicians - American Society of Internal Medicine	CL	Member, Committee on Guidelines for Management of Stable Angina	No	3
	American Journal of Medicine	EB	Member, Editorial Board	No	6
	Department of Veterans Affairs	EC	Member, Advisory Committee, VA HSR&D Management Decision and Research Center	Yes	1
	Department of Veterans Affairs	VAN	Member, VA VERA Research Support Accounting Team	Yes	1
	Department of Veterans Affairs	VAN	Member, VA Research and Development National Field Research Advisory Group	Yes	3
	Department of Veterans Affairs	VAN	Member, Steering Committee, Veterans Affairs Information Research and Education Center (VIREC)	Yes	1
	Department of Veterans Affairs	VAN	Awardee, Exemplary Service Award, Highest Honor Bestowed upon Civilians by VA	Yes	1
	Department of Veterans Affairs	VAN	Member, Scientific Merit Review Board	Yes	1,2
	DVA/HHS/CDC	VAN	Co-Chair, Evaluation Subcommittee and Member, Healthier US Veterans Program	Yes	3
L. Ganzini MD MPH	Academy of Psychosomatic Medicine	EB	Member, Annual Meeting Program Committee - Palliative and Supportive Care	No	6
M. Gerrity MD MPH PhD	Journal of General Internal Medicine	EB	Co-Editor-in-Chief	No	4
	MacArthur Foundation	EC	Member, National Steering Committee, Initiative on Depression in Primary Care	No	5
	Society of General Internal Medicine	RG	Member, Mental Health and Substance Abuse 1, Abstract Selection Subcommittee, 29th Annual Meeting, Los Angeles, CA May 11-14, 2006	No	4
	Department of Veterans Affairs	VAN	Member, Executive Committee, Mental Health Quality Enhancement Research Initiative (QUERI)	Yes	2
	Department of Veterans Affairs and Department of Defense	VAN	Member, Major Depressive Disorder Guideline Update Committee	Yes	2

Name	Organization	Org Type*	Role	VA Sponsored	VA Contribution**
B. Goldstein MD PhD	Department of Veteran Affairs	VAN	Project Director, Development of a National Health Outcomes Project for Veterans with SCI&D in VA	Yes	3,5
	Department of Veteran Affairs	VAN	Faculty and Planning Committee: Spinal Cord Injury SCI Primary Care Training	Yes	4
	Department of Veteran Affairs	VAN	Faculty and Planning Committee: Employee Education System and SCI&D	Yes	4
	Department of Veterans Affairs	VAN	Panel Member, Clinical Practice Guidelines Development, Preservation of Upper Extremity Function, Consortium for Spinal Cord Medicine	Yes	2
	Department of Veterans Affairs	VAN	Clinical Chair, Quality Enhancement Research Initiative, Spinal Cord Injury	Yes	2
M. Hammond MD	Department of Veterans Affairs	CL	Member, National SCI Clinical Practice Guidelines Consortium Steering Committee	Yes	6
	Department of Veterans Affairs	EC	Co-Chair, QUERI Spinal Cord Injury Executive Committee	Yes	2
	Department of Veterans Affairs	VAN	Member, Performance Management Work Group	Yes	6
	Department of Veterans Affairs	VAN	Member, Product Improvement Team, Spinal Cord Dysfunction Registry	Yes	3,6
S. Hedrick PhD	Gerontological Society of America	AS	Member, Co-Convener, Special Interest Group on Assisted Living	No	5
	Gerontological Society of America	AS	Member, SRPP Program Committee for 2007 Annual Meeting	No	5
	Health Services Research	EB	Member, Editorial Board	No	5
	Department of Veterans Affairs	VAN	Member, Review Committee for Research Enhancement Award Programs, Merit Review Entry Program, and Research Career Scientist Program	Yes	4,5
	Department of Veterans Affairs	VAN	Member, Research Career Scientist Review Committee	Yes	1

Name	Organization	Org Type*	Role	VA Sponsored	VA Contribution**
M. Helfand MD MPH MS	American College of Physicians	AS	Consultant, Clinical Efficacy Assessment Subcommittee, Thyroid Function Tests	No	4,5
	Society for Medical Decision Making	AS	Editor-in-Chief, Medical Decision Making	No	5
	Department of Veterans Affairs	CL	Founding Member, VA Department of Defense Guidelines Council	Yes	3
	Department of Veterans Affairs	CL	Founding Member, VA Department of Defense Evidence-based Medicine Council	Yes	3
	Department of Veterans Affairs	CL	Member, VA National Complementary & Alternative Medicine Advisory Group	Yes	1
	Department of Veterans Affairs	EC	NCI/VA Cancer Quality Enhancement Research Initiative (QUERI)	Yes	2
	United States Cochrane Center	EC	Member, Advisory Board	No	6
	AcademyHealth	RG	Member, Methods Council	No	5
	Oregon Evidence-based Practice Center	RG	Director	No	5
	Department of Veterans Affairs	VAN	Founding Member, VA Advisory Council on Practice Guidelines	Yes	2
D. Hickam MD MPH	Society for Medical Decision Making	AS	Chairperson, Regulations Committee	No	3
	Department of Veterans Affairs	VAN	Member, Scientific Merit Review Board (SMRB), HSR&D Service	Yes	1
L. Humphrey MD MPH	U.S. Preventive Services Task Force	EC	Consultant, Evidence-Based Practice Center, Oregon Health and Science University, Portland	No	3
	Eli Lilly and Company	NB	Member, National Scientific Internal Medicine Advisory Board	No	6
	Department of Veterans Affairs	VAR	Chair, Committee on Clinical Practice and Standards, Portland VA Medical Center	Yes	4

Name	Organization	Org Type*	Role	VA Sponsored	VA Contribution**	
D. Kivlahan PhD	Department of Veterans Affairs	CL	Member and Principal Editor, Working for Clinical Practice Guidelines on Management of Substance Use Disorders, 1996-	Yes	2	
	Department of Veterans Affairs	CL	Member, Buprenorphine Criteria Workgroup, Pharmacy Benefits Management, 2002-	Yes	2	
	National Institute on Alcohol Abuse and Alcoholism	CL	Invited Participant, NIAAA/NIDA/CSAT Workshop on Implementation Science and Addictions	No	4	
	Journal of Consulting and Clinical Psychology	EB	Consulting Editor	No	5	
	Journal of Studies on Alcohol	EB	Consulting Editor	No	5	
	Department of Veterans Affairs	EC	Member, Hepatitis C Technical Advisory Group, Public Health Strategic Health Care Group, 2001-	Yes	2,6	
	Department of Veterans Affairs	EC	Director, Center of Excellence in Substance Abuse Treatment and Education (CESATE), 1998-	Yes	2,4,6	
	Department of Veterans Affairs	EC	Member, Substance Abuse Tactical Planning Workgroup for Mental Health Strategic Plan	Yes	1,2	
	Department of Veterans Affairs	EC	Member, Planning Committee, VA National Conference on Primary Care and Preventive Medicine, Employee Education System	Yes	1	
	Department of Veterans Affairs	RG	Member, Combined Data Safety and Monitoring Board (CoMB), HSR&D Service, 2002-	Yes	2,3,5	
	Department of Veterans Affairs	VAN	Member, Executive Committee Substance Abuse Module, Quality Enhancement Research Initiative (QUERI), 1998-	Yes	1	
	Department of Veterans Affairs	VAN	Member, Psychology Advisory Committee, Mental Health Strategic Health Care Group, 1999-	Yes	2	
	Department of Veterans Affairs	VAN	Clinical Coordinator, Substance Abuse Disorder QUERI, VHA HSR&D	Yes	1,2,5	
	Department of Veterans Affairs	VAN	Member, Work Group for VHA Mental Health External Program Evaluation, 2003-	Yes	2,3	
	Department of Veterans Affairs	VAN	Principal Subject Matter Expert, SUD Continuity of Care Performance Measure, Office of Quality and Performance	Yes	2	
	Department of Veterans Affairs	VAN	Member, Tobacco Use Cessation Technical Advisory Group, Public Health Strategic Health Care Group	Yes	2	
	Department of Veterans Affairs	VAN	Member, National Quality Forum Substance Use Disorders Evidence-based Practices Steering Committee	Yes	1	
	Department of Veterans Affairs	VAN	Member, Neurobiology A Merit Review Subcommittee, Office of Research and Development	Yes	2	
	G. Larsen MD	Department of Veterans Affairs	VAN	Member, Executive Committee, National Ischemic Heart Disease Quality Enhancement Research Initiative (QUERI), 2001-	Yes	1

Name	Organization	Org Type*	Role	VA Sponsored	VA Contribution**
C. Maynard PhD MSW	American Heart Journal	EB	Member, Editorial Board	No	5
	American Journal of Cardiology	EB	Member, Editorial Board	No	5
	Journal of Electrocardiology	EB	Special Sections Editor Biostatistics	No	5
	Washington State Department of Social and Health Services	EC	Member, Research Subcommittee of the Citizens' Advisory Council on Alcoholism and Drug Addiction, Division of Alcohol and Substance Abuse	No	5
	Department of Veterans Affairs	VAN	Member, HSR&D Scientific Merit Review Board (SMRB) through 2008	Yes	1
	Department of Veterans Affairs	VAN	Member, Technical Advisory Board, VA Medicare Data Merge Project	Yes	3
G. Reiber MPH PhD	Centers for Medicare and Medicaid Services	EC	Member, Medical Advisory Panel on Glucose Monitoring	No	6
	Department of Veterans Affairs	EC	Core Investigator, VA Center of Excellence for Limb Loss, Prevention and Prosthetics Engineering	Yes	2,6
	Department of Veterans Affairs	EC	Member, VA Functional Status Outcomes Database Steering Committee	Yes	1,2
	International Diabetes Federation	EC	Chair, Diabetes in Elderly - UN Resolution	No	6
	International Working Group on the Diabetic Foot	RG	Advisory Board and Panels	No	2
	Department of Veterans Affairs	VAN	Member, Diabetes Executive Committee, Quality Enhancement Research Initiative (QUERI)	Yes	1,2,3
	Department of Veterans Affairs	VAN	Member, VA Functional Status Outcomes Database Steering Committee	Yes	1,2,3
	Department of Veterans Affairs	VAN	Member, HSR&D Career Development Review Committee	Yes	1,4,6
	Department of Veterans Affairs	VAN	Member, Polytrauma and Blast-Related Injuries QUERI Research Affiliate	Yes	1,2
	Department of Veterans Affairs	VAR	Research Scientist, Wound Care Line, VA Puget Sound Health Care System, Seattle	Yes	4,6
S. Saha MD MPH	Society of General Internal Medicine	AS	Member, Disparities Task Force	No	6
	Society of General Internal Medicine	AS	Co-Chair, Abstract Committee, SGIM Annual Meeting 2006	No	6
	Journal of General Internal Medicine	EB	Co-Editor, Special Issue on Health Literacy	No	5
	Journal of General Internal Medicine	EB	Co-Editor, Special Issues on Language Barriers in Health Care	No	5
	Robert Wood Johnson Foundation	EC	Member, National Advisory Committee, Clinical Scholars Program	No	4
	State of Oregon	EC	Commissioner, Health Services Commission	No	5
	State of Oregon	RG	Member, Prioritization Principles Workshop, Health Services Commission	No	5

Name	Organization	Org Type*	Role	VA Sponsored	VA Contribution**
A. Sales PhD MSN RN	Journal of General Internal Medicine	EB	Guest Editor, Special Issue (Papers and proceedings from the State of the Art VA Conference on Implementation in Healthcare, 2006)	No	2,3,4
	Agency for Healthcare Quality and Research	EC	Member, Quality Healthcare Technology and Decision Science Study Section	No	3,5
	Department of Veterans Affairs	EC	Member, Data Safety and Monitoring Board for Cooperative Studies Project #474	Yes	3,5
	VA Health Economics Research Center	EC	Member, Steering Committee	Yes	3,4,5
	AcademyHealth	RG	Chair-Elect, Interdisciplinary Research Group on Nursing Issues	No	3,5,6
	Department of Veterans Affairs	RG	Chair, VA Nursing Pilot Proposal Review for Office of Nursing Services, April 2006	Yes	1
	Department of Veterans Affairs	VAN	Member, Executive Committee, Ischemic Heart Disease Quality Enhancement Research Initiative (QUERI)	Yes	1,2
	Department of Veterans Affairs	VAN	Implementation Research Coordinator, Ischemic Heart Disease Quality Enhancement Research Initiative (IHD QuERI)	Yes	1,2,3
A. Saxon MD	College on Problems of Drug Dependence	AS	Member, Program Committee	No	4
	University of Washington	AS	Director, Addiction Psychiatry Residency Program	Yes	6
	Drug and Alcohol Dependence	EB	Member, Editorial Board	No	5
	American Academy of Addiction Psychiatry	EC	Member, Continuing Education Committee	No	4
	American Psychiatric Association	EC	Corresponding Member, Council on Addiction Psychiatry	No	6
	Buprenorphine Physician Clinical Support System	NB	Board Member and National Expert	No	3
	University of Washington	RG	Member and Vice-Chair, Committee V, UW Human Subjects Review Committee	No	2,4
J. Shannon PhD MPH	Department of Veterans Affairs	VAR	Member, Internal Review Board, Portland VA Medical Center, 2005-2008	Yes	2
K. Sloan MD	Department of Veterans Affairs	VAN	Member, Advisory Board, VA Multiple Sclerosis Center of Excellence (West)	Yes	2,3
B. Steele PhD RN	Department of Veterans Affairs	VAR	Chair, VISN 20 COPD Patient Education Committee	Yes	2,5
	Department of Veterans Affairs	VAR	Chair, VA Puget Sound Health Care System Smoking Policy Committee	Yes	4,5

Name	Organization	Org Type*	Role	VA Sponsored	VA Contribution**
B. Yueh MD MPH	American College of Surgeons Oncology Group	AS	Member, Head and Neck Site Committee and Quality of Life Sub-Committee	No	6
	American Head & Neck Society	CL	Member, 2008 International Program Committee	No	5
	American Head and Neck Society	CL	Member, 2007 Scientific Program Committee	No	3
	American Head and Neck Society	CL	Member, 2006 International Research Workshop Program Committee	No	5
	Archives of Otolaryngology/Head and Neck Surgery	EB	Member, Editorial Board	No	5
	Archives of Otolaryngology/Head and neck Surgery	EB	Associate Editor, Head and Neck Surgery	No	5
	Oral Diseases	EB	Member, Editorial Board	No	5
	American Academy of Otolaryngology/Head and Neck Surgery	EC	Member, Subcommittee on Hearing Aids Committee	No	3,5
	American Academy of Otolaryngology/Head and Neck Surgery	EC	Member, Head & Neck Committee	No	3,5
	American Academy of Otolaryngology/Head and Neck Surgery	RG	Consultant, Physician Resources Committee	No	3
	National Cancer Institute	RG	Member, Health-related Quality of Life (HRQOL) Intergroup Committee	No	6
	Department of Veterans Affairs	VAN	Member, Special Populations Scientific Merit Review Board (SMRB)	Yes	2,4
	Department of Veterans Affairs	VAN	Member, HSR&D General Health Services Scientific Merit Review Board (SMRB)	Yes	2,4
X. Zhou PhD MSc	U.S. Food and Drug Administration	EC	Member, Advisory Committee in Center for Devices and Radiological Health	No	3,5
	National Institute of Health	RG	Member, Biostatistical Methods and Research Design (BMRD) Study Section	No	6
	Department of Veterans Affairs	VAN	President, VA Statisticians' Association (VASA)	Yes	1
	Department of Veterans Affairs	VAN	Member, HSR&D Scientific Merit Review Board for Special Populations	Yes	3,5

\* VHA National Committee (VAN), VA Regional/Network Committee (VAR), Academic Society (AS), Consensus Conference or Clinical Guidelines Development Committee (CL), Study Section or other Research Review Group (RG), Editorial Board (EB), Executive or Advisory Committee for a Research Program or National Study (EC), National Policy Board (NB)

\*\* (1) Setting a VA research agenda, (2) oversight of a VA research product, national policy related to patient care, (3) oversight of a research product with national importance, (4) input to training of VA staff or potential researchers, (5) input to the general area of health services research, (6) national leadership of a clinical and/or academic program.