



Order No. 19-09-02
USDA Forest Service
Lake Tahoe Basin Management Unit
Angora Hazard Tree Removal Project

Pursuant to 36 CFR 261.50(a) and (b), and to provide for public safety, the following acts are prohibited within the Lake Tahoe Basin Management Unit. This Order is effective every day from 7:00 a.m. to 6:00 p.m., January 13, 2009, through February 20, 2009.

1. Being within 100 feet of Forest Road No. 12N20 from its intersection with Seneca Drive, then southwest 1/8 mile, as shown on Exhibit 1. 36 CFR 261.53(e).
2. Being within 200 feet of Trail No. 17E49.4 from its intersection with 12N20, then southwest 1 mile to 17E49 (Gunmount Trail), as shown on Exhibit 1. 36 CFR 261.53(e).
3. Being within 200 feet of Forest Trail No. 17E49 (Gunmount Trail) from its intersection with 17E49.4 at Seneca Pond, then south 1 mile to the Angora Fire boundary, as shown on Exhibit 1. 36 CFR 261.53(e).
4. Being on Forest Road No. 12N20 from its intersection with Seneca Drive, then southwest 1/8 mile. 36 CFR 261.54(e).
5. Being on Trail No. 17E49.4 from its intersection with Seneca Drive, then southwest 1 mile to Forest Trail No. 17E49 (Gunmount Trail). 36 CFR 261.55(a).
6. Being on Forest Trail No. 17E49 (Gunmount Trail) from its intersection with 17E49.4 at Seneca Pond, then south 1 mile to the Angora Fire boundary. 36 CFR 261.55(a).

Pursuant to 36 CFR 261.50(e), the following persons are exempt from this Order:

1. Persons with a permit from the Forest Service specifically authorizing the otherwise prohibited act or omission.
2. Any Federal, State or local officer, or member of an organized rescue or fire fighting force in the performance of an official duty.

These prohibitions are in addition to the general prohibitions in 36 CFR Part 261, Subpart A.

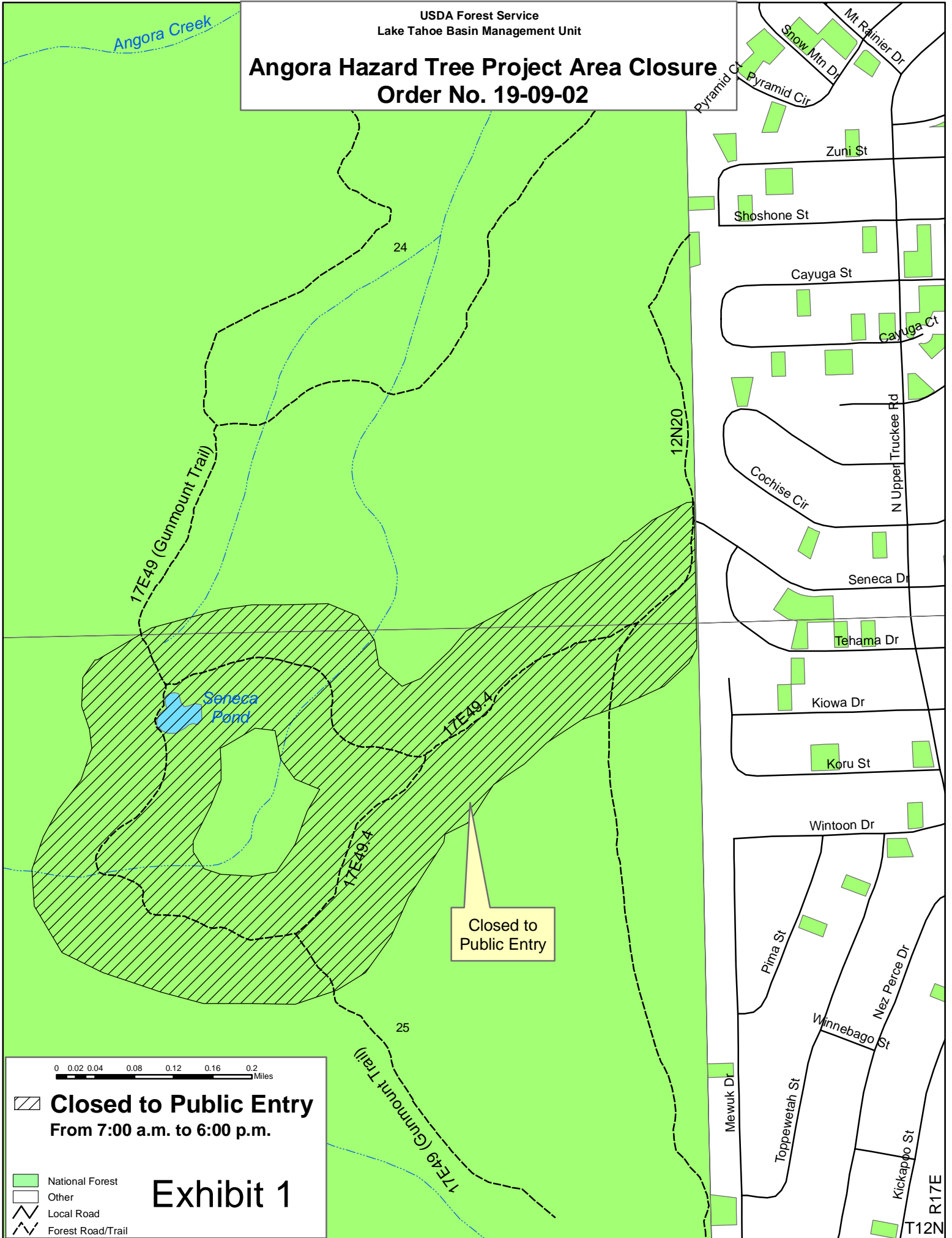
Done at South Lake Tahoe, California, this 12th day of January, 2009.


TERRI MARCERON
Forest Supervisor

A violation of these prohibitions is punishable by a fine of not more than \$5,000 for an individual or \$10,000 for an organization, or imprisonment for not more than six months, or both. 16 USC 551 and 18 USC 3559, 3571, and 3581.

Angora Hazard Tree Project Area Closure

Order No. 19-09-02



Closed to
Public Entry

0 0.02 0.04 0.08 0.12 0.16 0.2 Miles

 **Closed to Public Entry**
From 7:00 a.m. to 6:00 p.m.


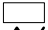


-  National Forest
-  Other
-  Local Road
-  Forest Road/Trail

Exhibit 1

