



SUCCESS RATES

A success rate is the percentage of reviewed applications receiving funding, computed on a fiscal year basis. It is determined by dividing the number of competing applications funded by the sum of the total number of competing applications reviewed and the number of funded carryovers. Note that applications having one or more amendments in the same fiscal year are only counted once.





SUCCESS RATES	SLIDE NUMBER
Success Rates: Training Grants and Fellowships	4
KIRSCHSTEIN-NRSA RESEARCH TRAINING GRANTS (T32s) APPLICATIONS, AWARDS, AND SUCCESS RATES	5
KIRSCHSTEIN-NRSA PRE-DOCTORAL FELLOWSHIPS (F31s) APPLICATIONS, AWARDS, AND SUCCESS RATES	6
KIRSCHSTEIN-NRSA POST-DOCTORAL FELLOWSHIPS (F32s) APPLICATIONS, AWARDS, AND SUCCESS RATES	7
Success Rates: Research Career Development Awards	8
RESEARCH CAREER DEVELOPMENT AWARDS: K01s APPLICATIONS, AWARDS, AND SUCCESS RATES	9
RESEARCH CAREER DEVELOPMENT AWARDS: K02s APPLICATIONS, AWARDS, AND SUCCESS RATES	10
RESEARCH CAREER DEVELOPMENT AWARDS: K08s APPLICATIONS, AWARDS, AND SUCCESS RATES	11
RESEARCH CAREER DEVELOPMENT AWARDS: K23s APPLICATIONS, AWARDS, AND SUCCESS RATES	12
RESEARCH CAREER DEVELOPMENT AWARDS: K24s APPLICATIONS, AWARDS, AND SUCCESS RATES	13
SELECT RESEARCH CAREER DEVELOPMENT AWARDS APPLICATIONS, AWARDS, AND SUCCESS RATES	14
Success Rates: Small Business Innovation Research Grants	15
PHASE I SBIR GRANTS APPLICATIONS, AWARDS, AND SUCCESS RATES	16
PHASE II SBIR GRANTS APPLICATIONS, AWARDS AND SUCCESS RATES	17
SBIR SUCCESS RATES, BY PHASE	18
SBIR AND RPG SUCCESS RATES	19
PHASE I SBIR AND TYPE 1 RPG SUCCESS RATES	20
PHASE II SBIR AND TYPE 2 RPG SUCCESS RATES	21
SBIR AND RPG SUCCESS RATES	22
SUCCESS RATES OF SBIR APPLICATIONS: INSTITUTIONAL DEVELOPMENT AWARD (IDeA) AND OTHER STATES FY 2007	23





SUCCESS RATES	SLIDE NUMBER
Success Rates: Research Project Grants	24
RESEARCH PROJECT GRANT APPLICATIONS, AWARDS, AND SUCCESS RATES	25
Success Rates: R01 Equivalent Grants	26
R01 EQUIVALENT GRANT APPLICATIONS, AWARDS, AND SUCCESS RATES	27
Success Rates: Targeted Research	28
SUCCESS RATES OF SOLICITED AND UNSOLICITED NEW (TYPE 1) RESEARCH PROJECT GRANT APPLICATIONS	29
NUMBER AND SUCCESS RATES OF R01 EQUIVALENT GRANTS BY INSTITUTES AND CENTERS FY 2007	30
Success Rates: Women in Research	31
SUCCESS RATES OF WOMEN AND MEN ON NEW AND CONTINUING R01 APPLICATIONS	32
SUCCESS RATES OF WOMEN AND MEN ON COMPETING RESEARCH PROJECT GRANT APPLICATIONS	33
Success Rates: First-Time Investigators	34
FIRST-TIME INVESTIGATORS APPLICATIONS, AWARDS, AND SUCCESS RATES FY 2007	35
SUCCESS RATES OF R01-EQUIVALENT APPLICATIONS FROM FIRST-TIME AND ESTABLISHED INVESTIGATORS BY INSTITUTE OR CENTER FY 2007	36
SUCCESS RATES OF NEW (TYPE 1) R01 EQUIVALENT APPLICATIONS FROM FIRST-TIME AND ESTABLISHED INVESTIGATORS	37
DEFINITIONS AND ADDITIONAL INFORMATION	38
DEFINITIONS AND ADDITIONAL INFORMATION	39
DEFINITIONS AND ADDITIONAL INFORMATION	40





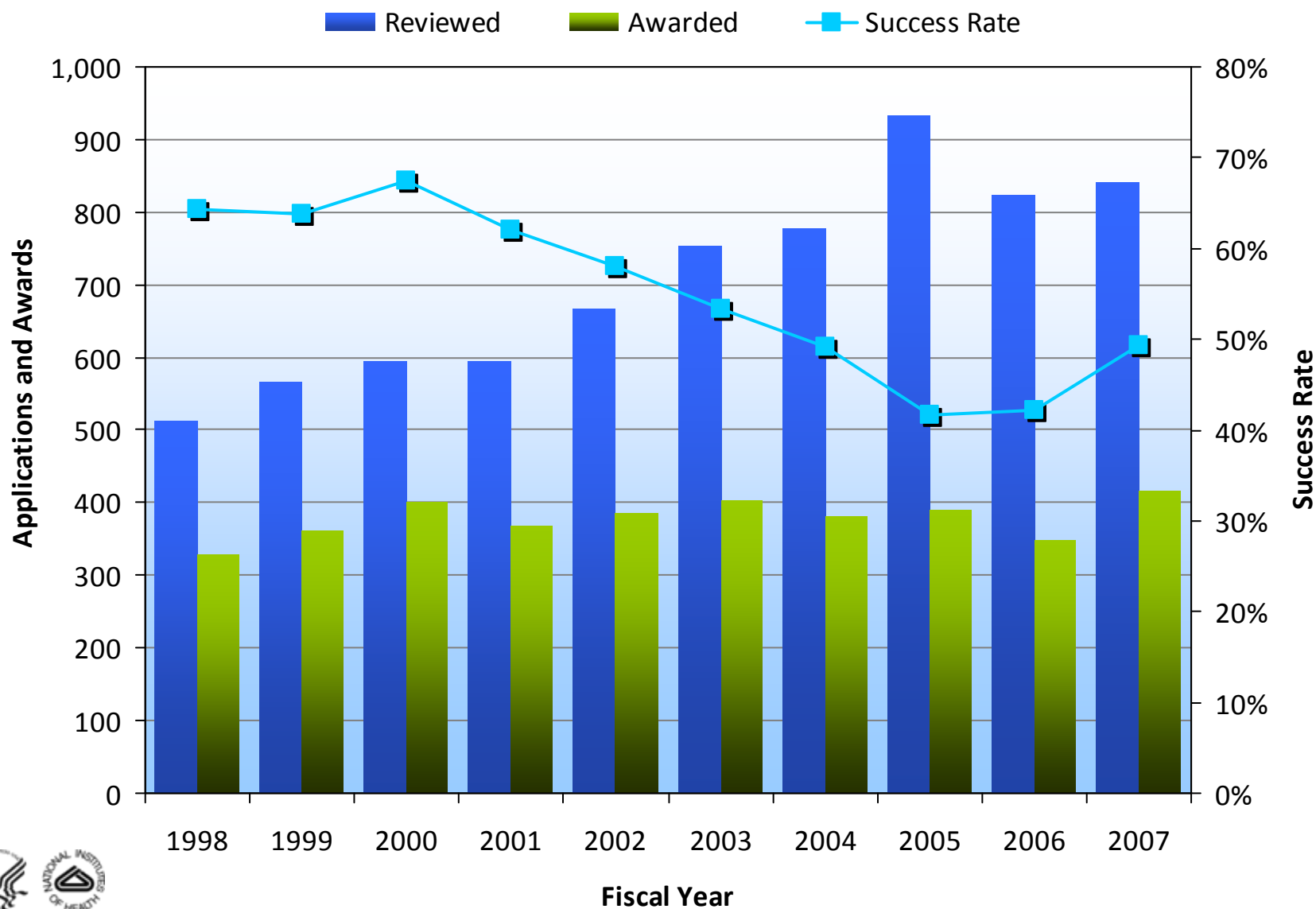
SUCCESS RATES:

Training Grants and Fellowships



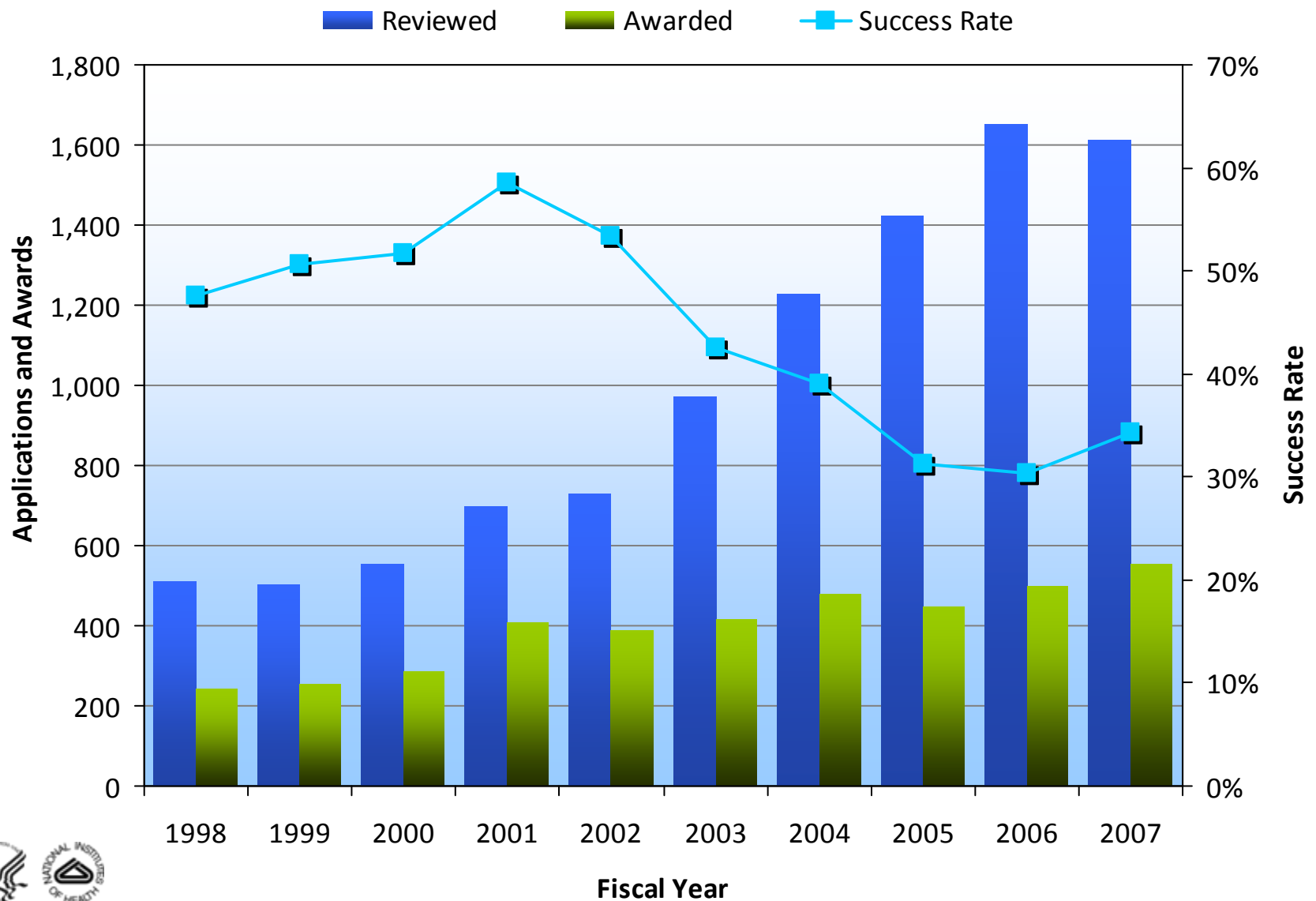


KIRSCHSTEIN-NRSA RESEARCH TRAINING GRANTS (T32s) APPLICATIONS, AWARDS, AND SUCCESS RATES



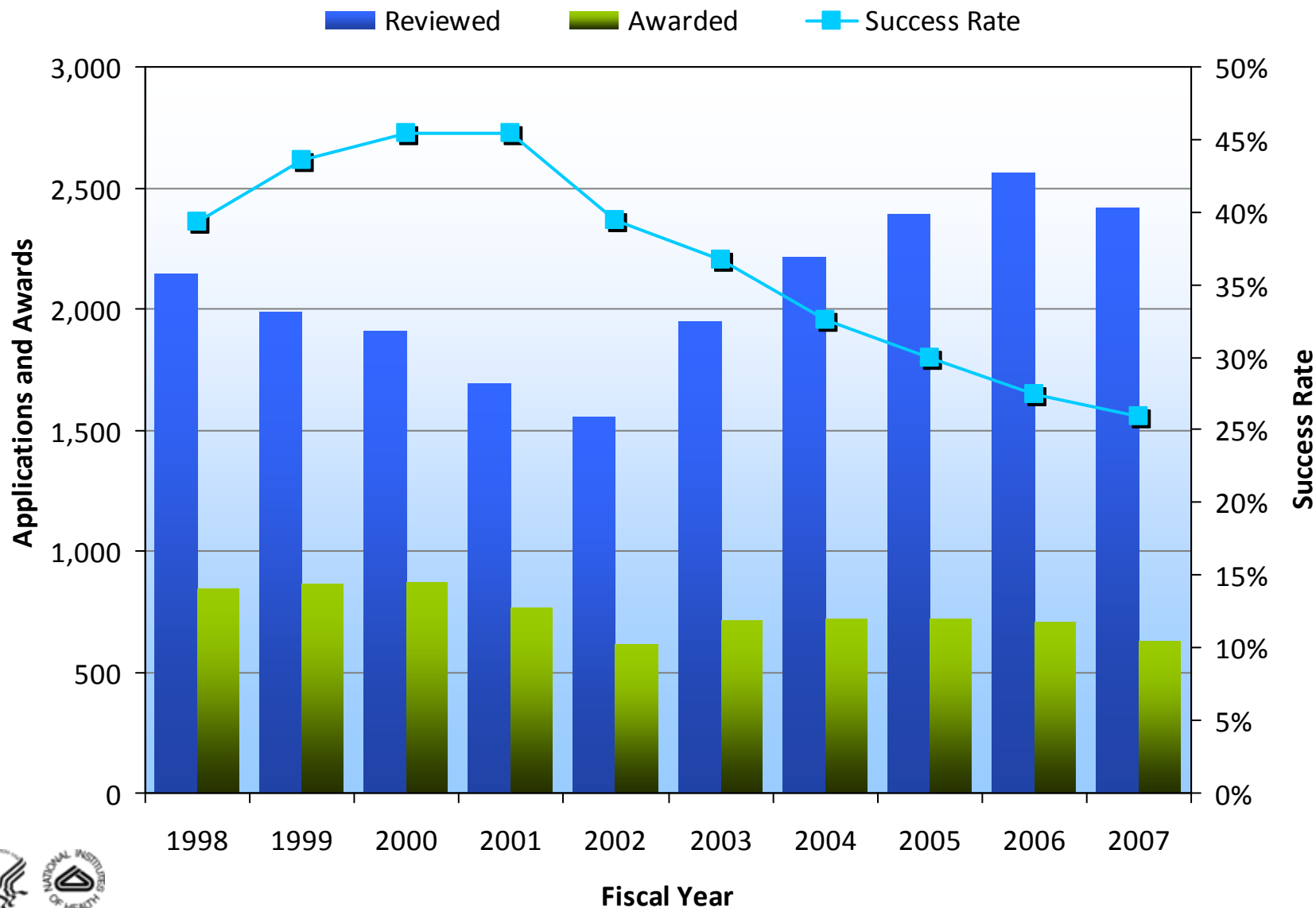


KIRSCHSTEIN-NRSA PRE-DOCTORAL FELLOWSHIPS (F31s) APPLICATIONS, AWARDS, AND SUCCESS RATES





KIRSCHSTEIN-NRSA POST-DOCTORAL FELLOWSHIPS (F32s) APPLICATIONS, AWARDS, AND SUCCESS RATES





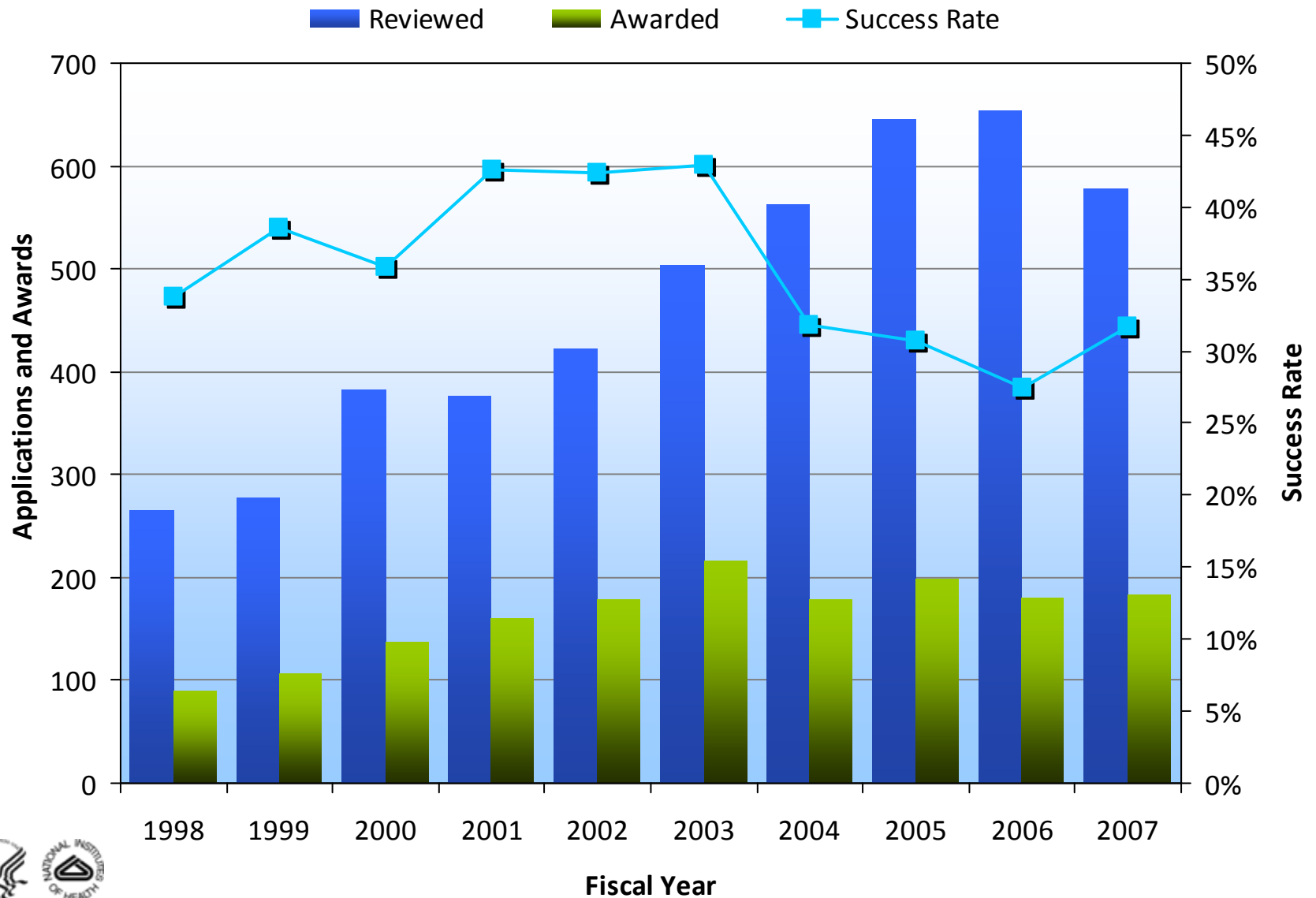
SUCCESS RATES:

RESEARCH CAREER DEVELOPMENT AWARDS



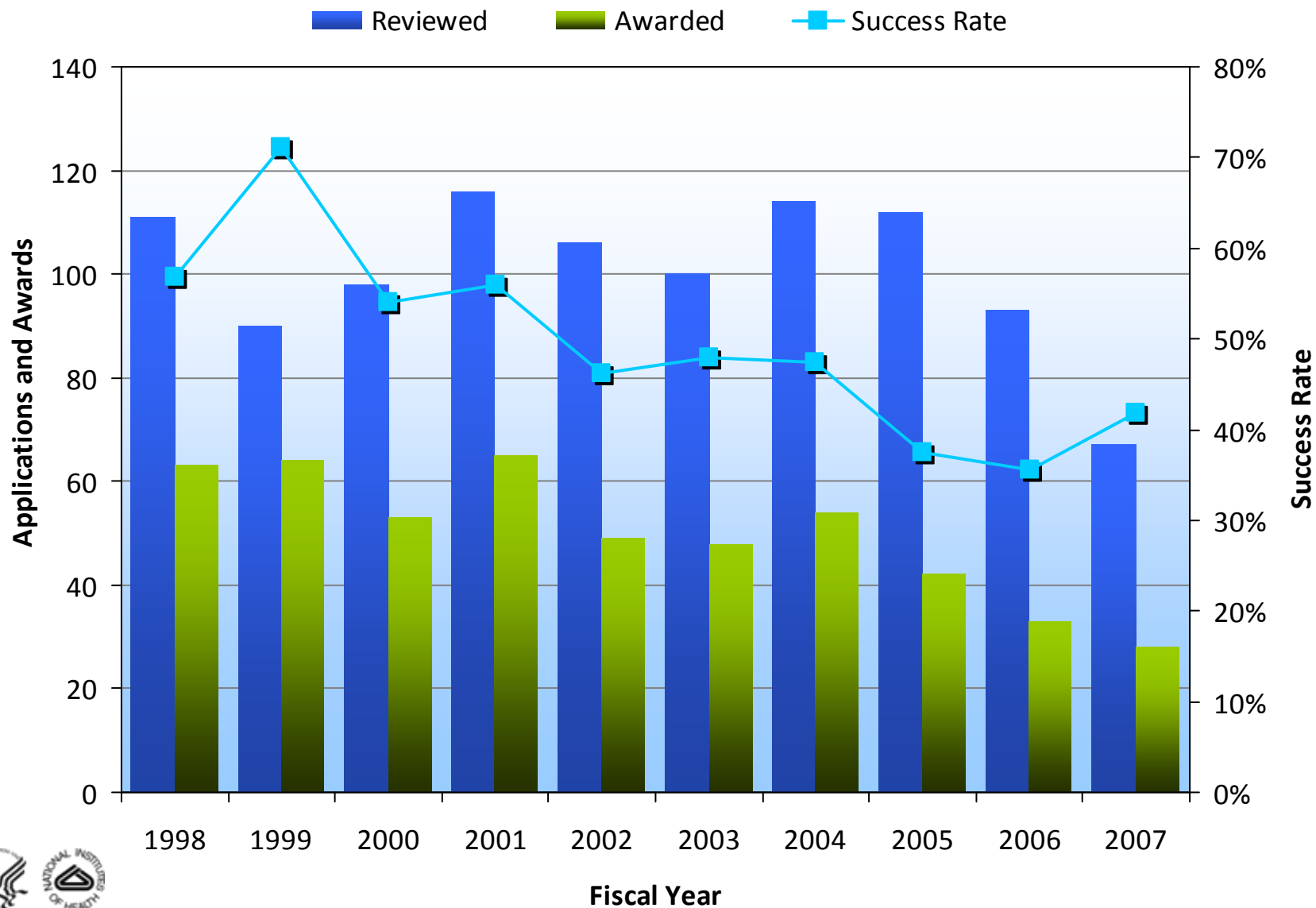


RESEARCH CAREER DEVELOPMENT AWARDS: K01s APPLICATIONS, AWARDS, AND SUCCESS RATES



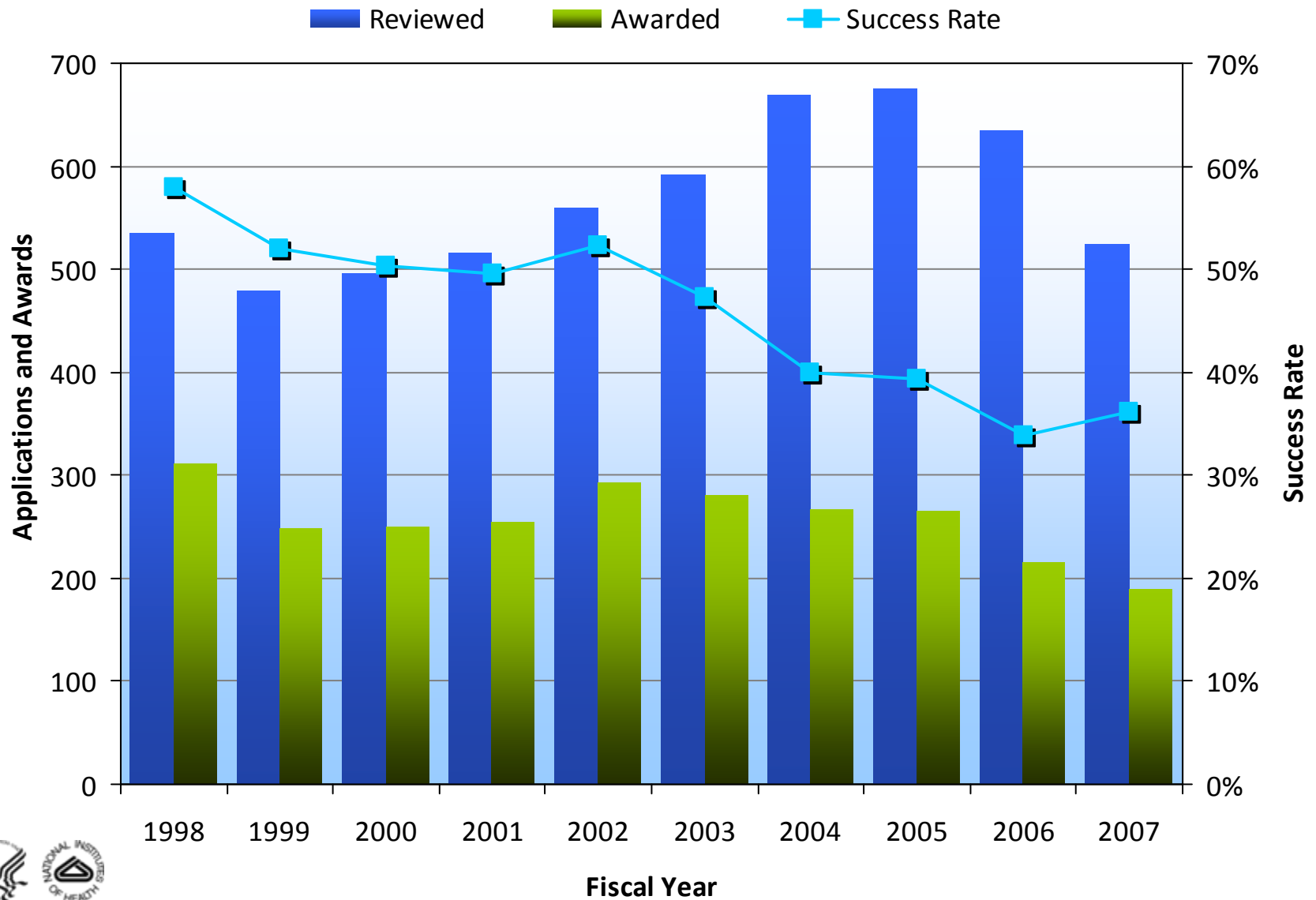


RESEARCH CAREER DEVELOPMENT AWARDS: K02s APPLICATIONS, AWARDS, AND SUCCESS RATES



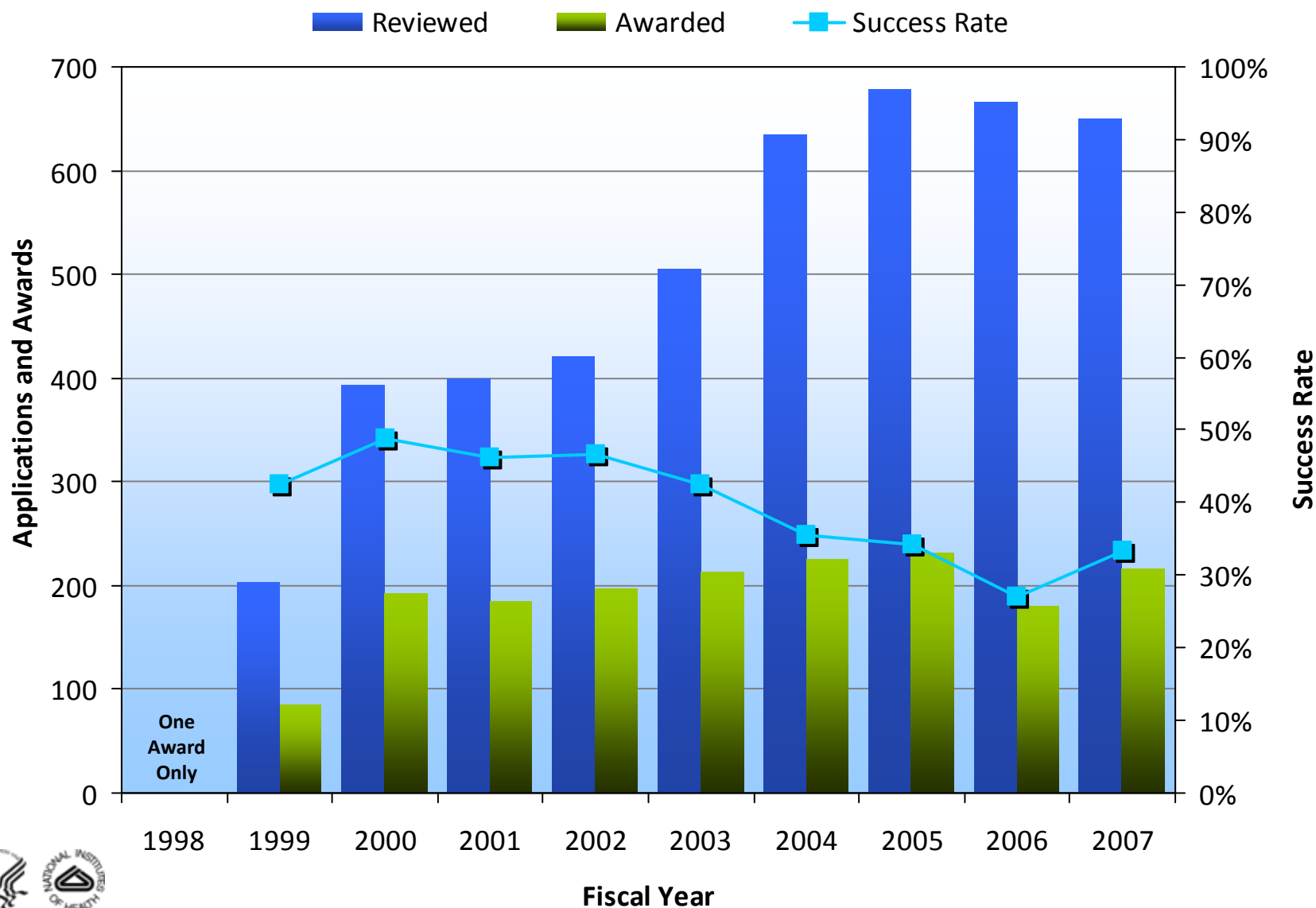


RESEARCH CAREER DEVELOPMENT AWARDS: K08s APPLICATIONS, AWARDS, AND SUCCESS RATES



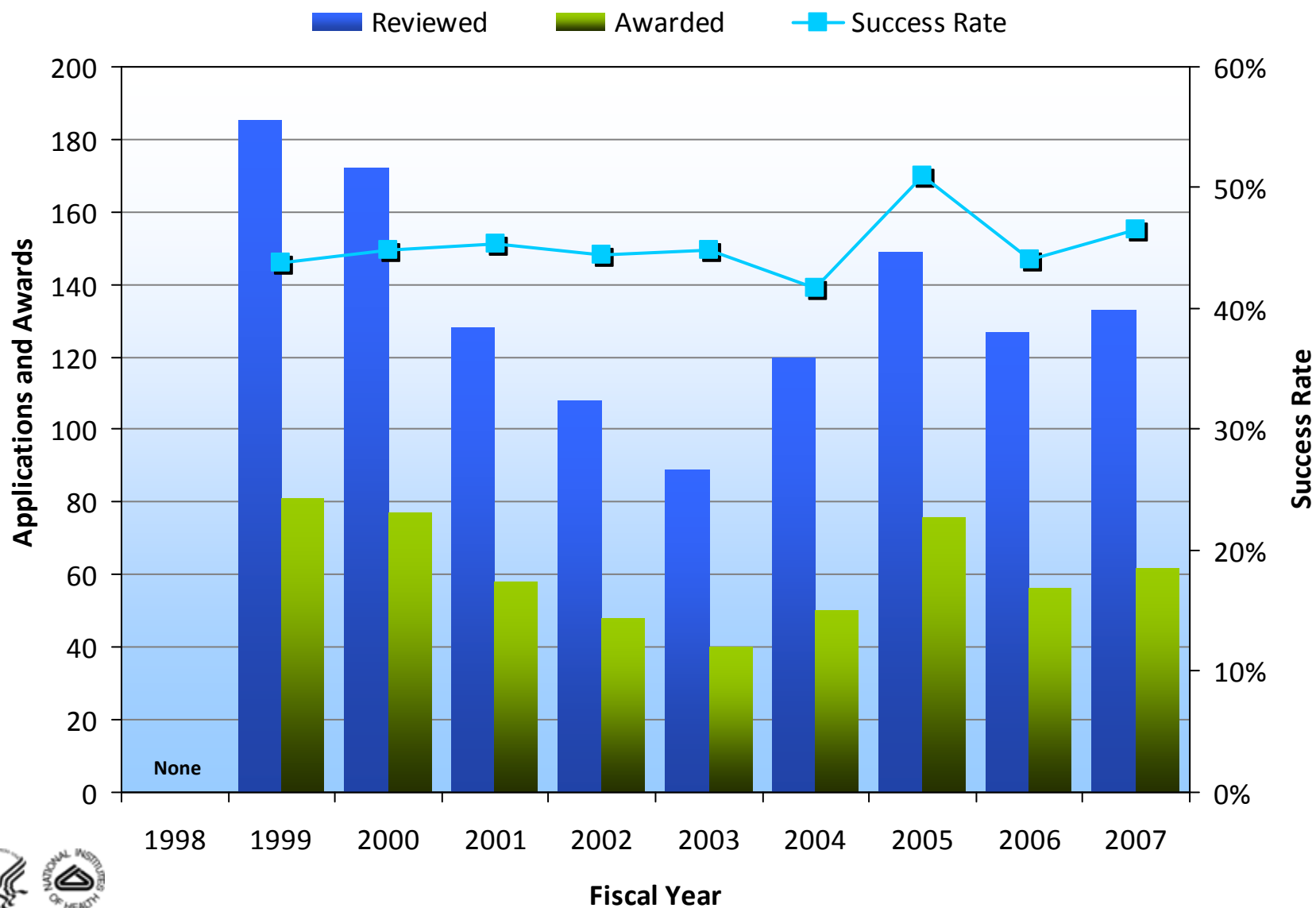


RESEARCH CAREER DEVELOPMENT AWARDS: K23s APPLICATIONS, AWARDS, AND SUCCESS RATES



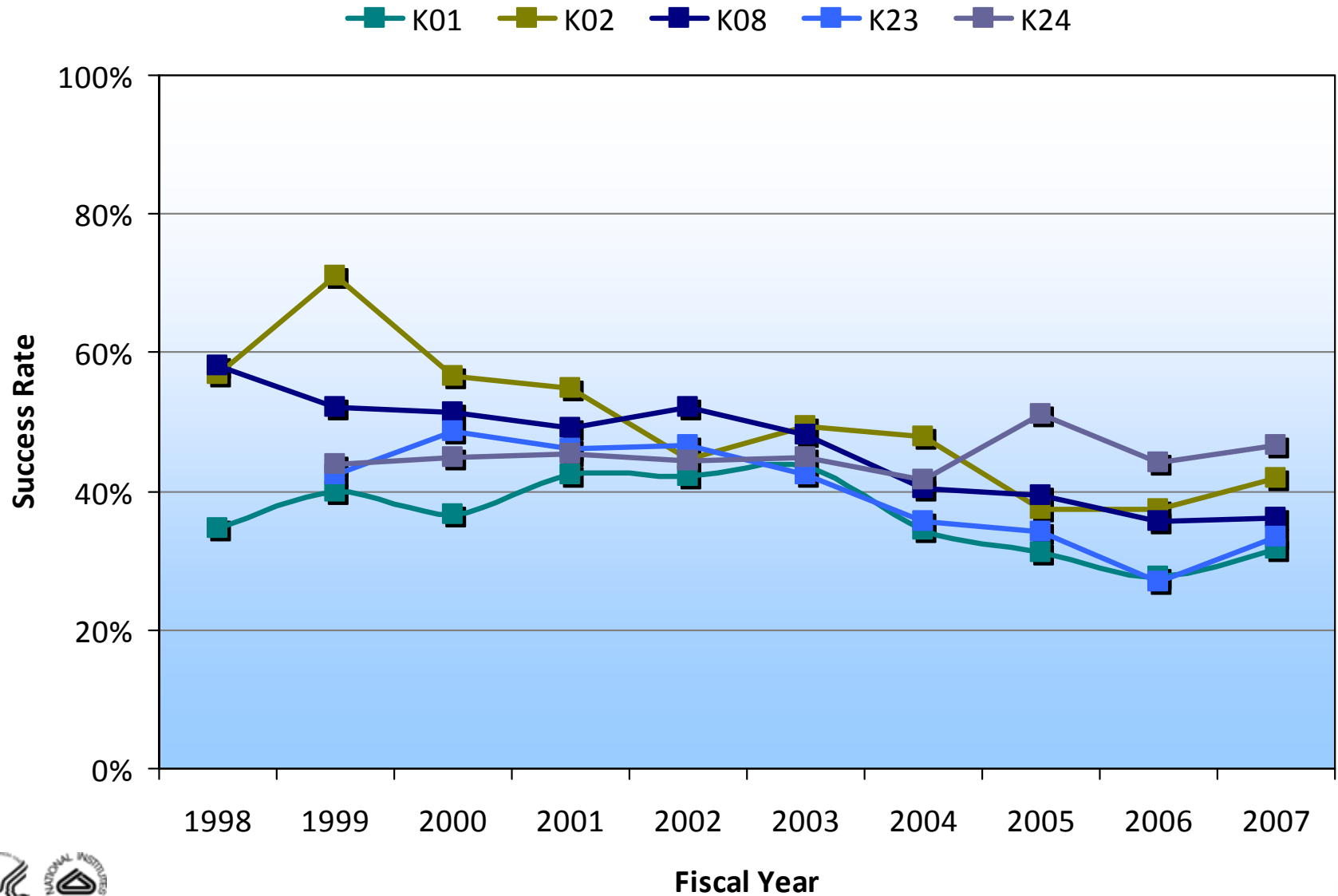


RESEARCH CAREER DEVELOPMENT AWARDS: K24s APPLICATIONS, AWARDS, AND SUCCESS RATES





SELECT RESEARCH CAREER DEVELOPMENT AWARDS APPLICATIONS, AWARDS, AND SUCCESS RATES





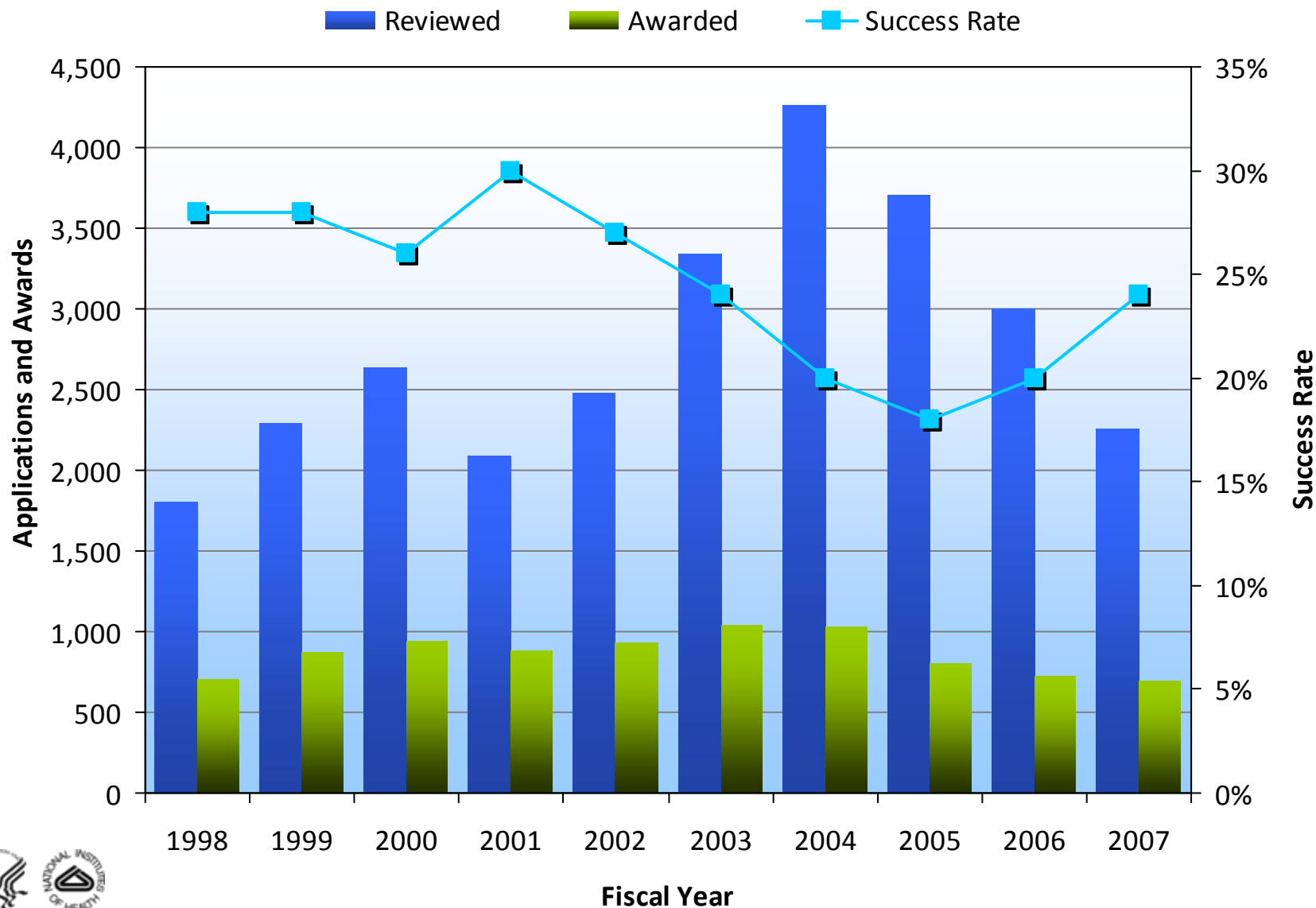
SUCCESS RATES:

SMALL BUSINESS INNOVATION RESEARCH GRANTS



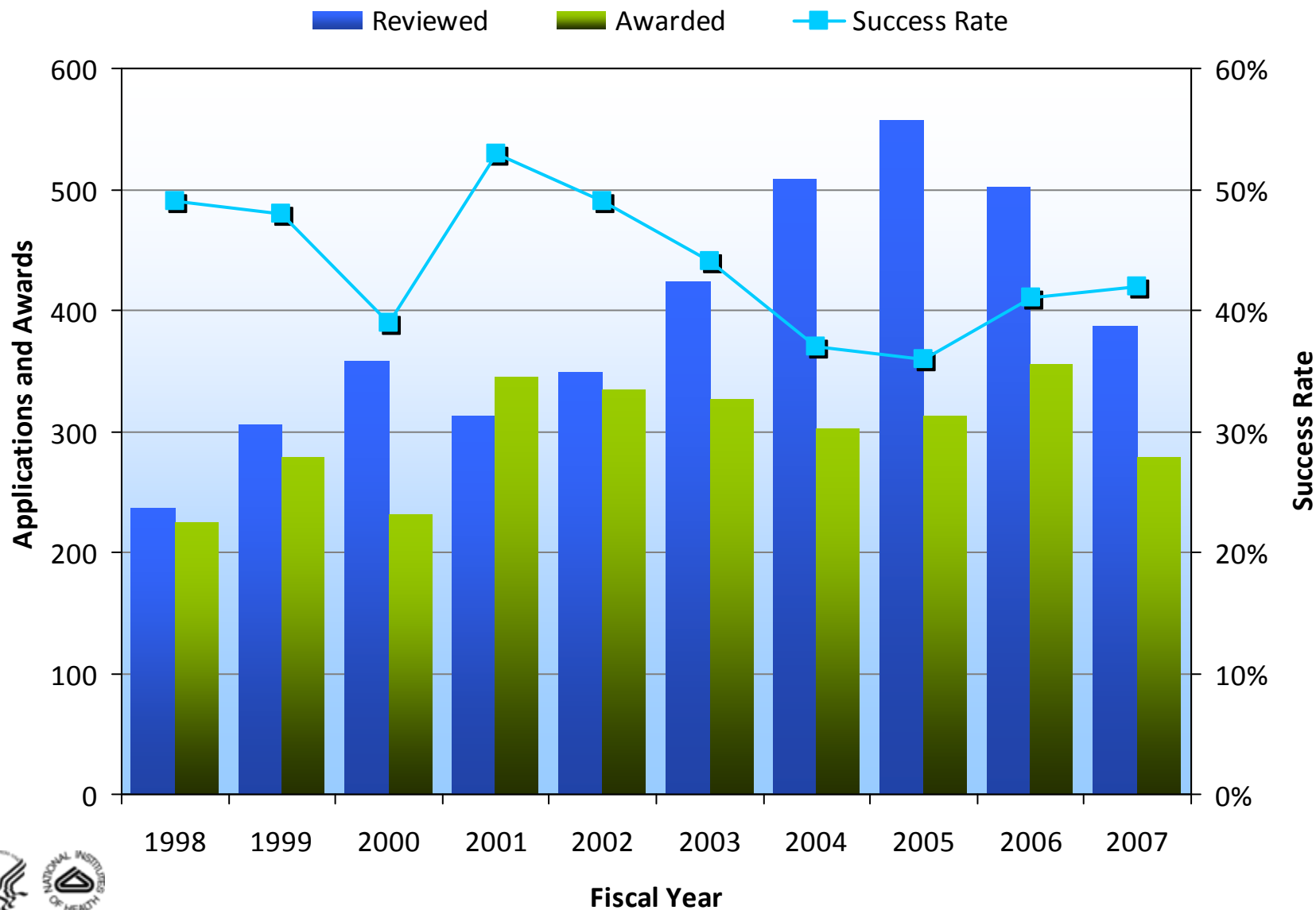


PHASE I SBIR GRANTS APPLICATIONS, AWARDS, AND SUCCESS RATES



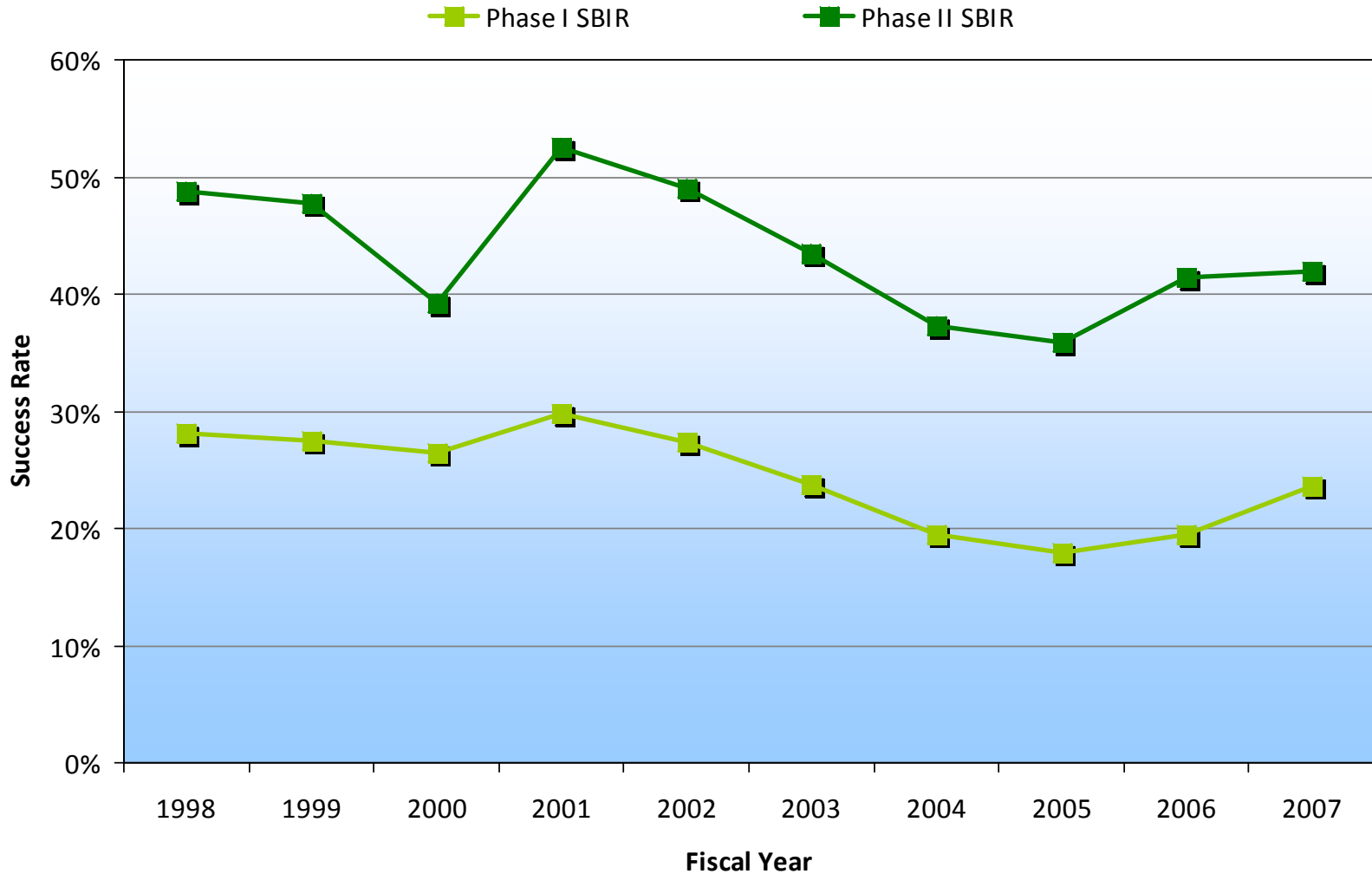


PHASE II SBIR GRANTS APPLICATIONS, AWARDS, AND SUCCESS RATES



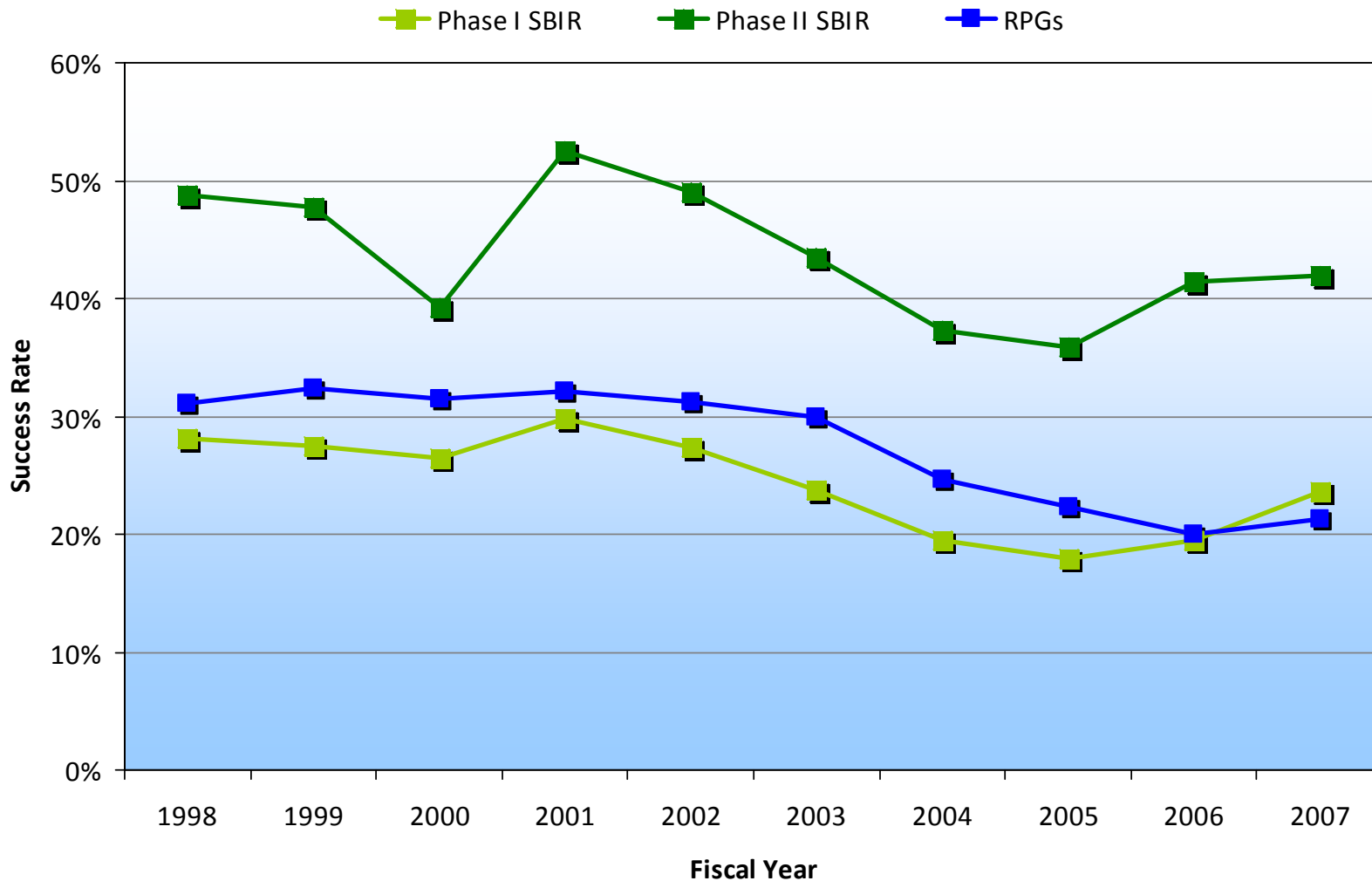


SBIR SUCCESS RATES, BY PHASE



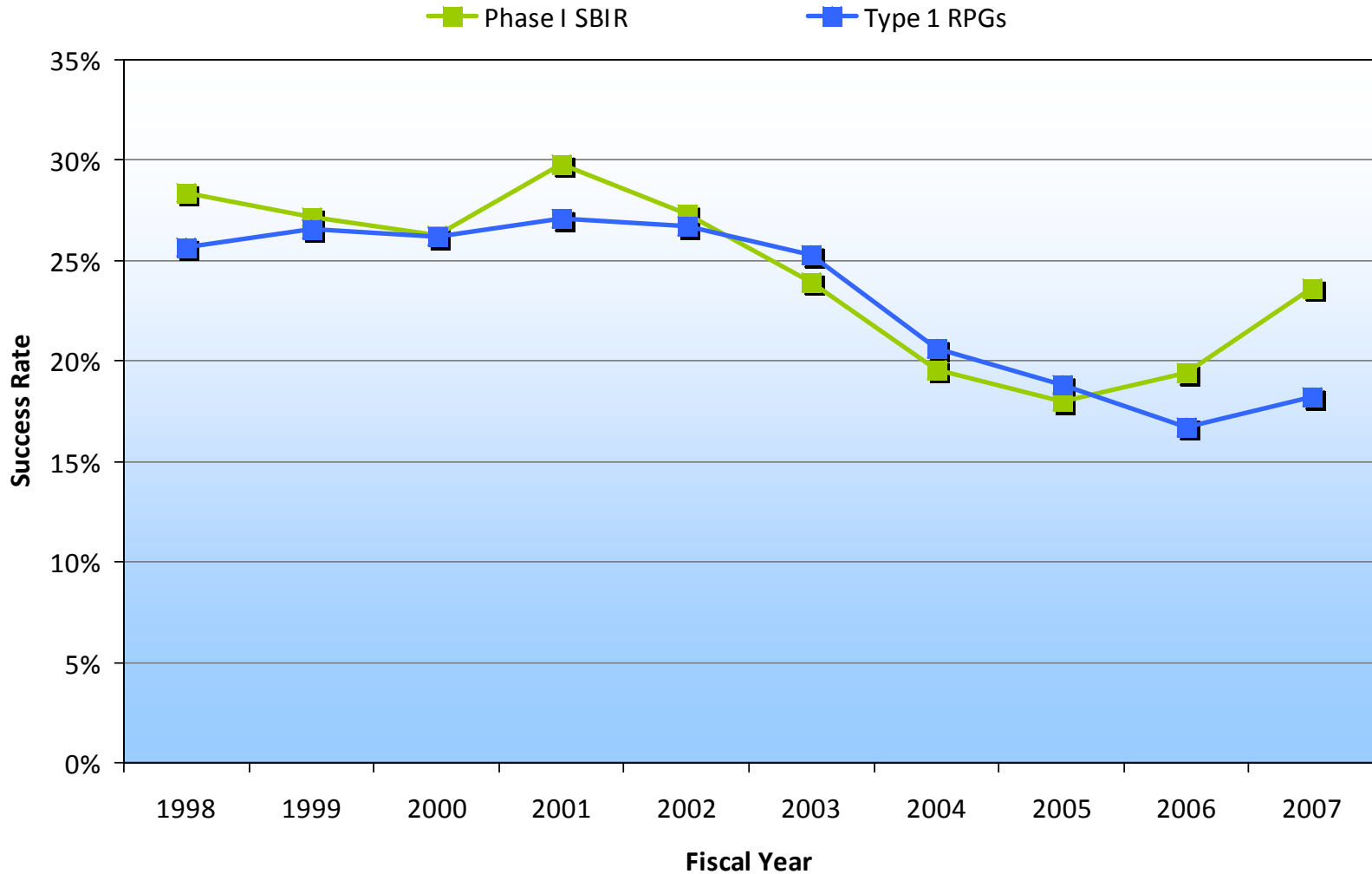


SBIR AND RPG SUCCESS RATES



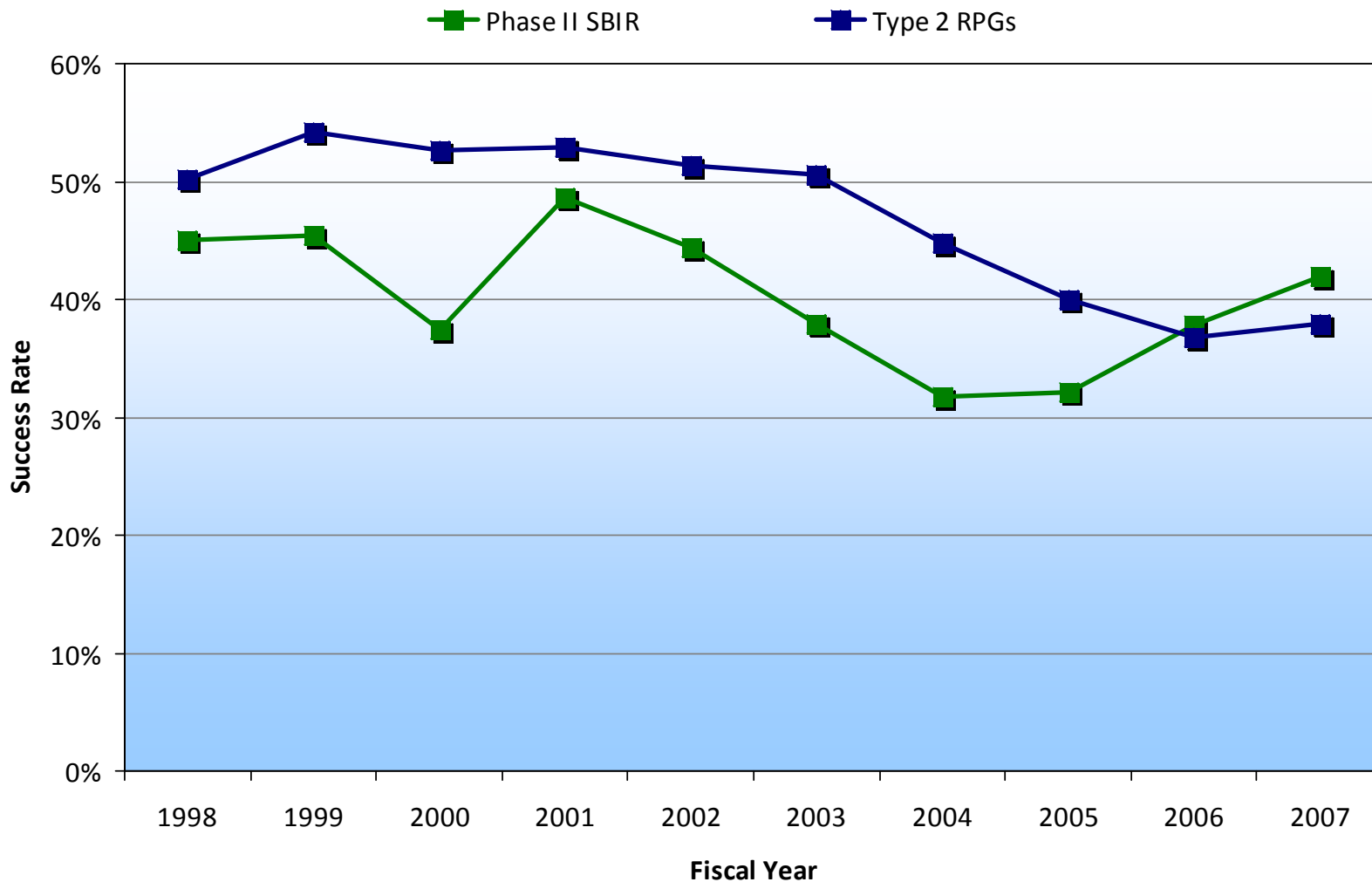


PHASE I SBIR AND TYPE 1 RPG SUCCESS RATES



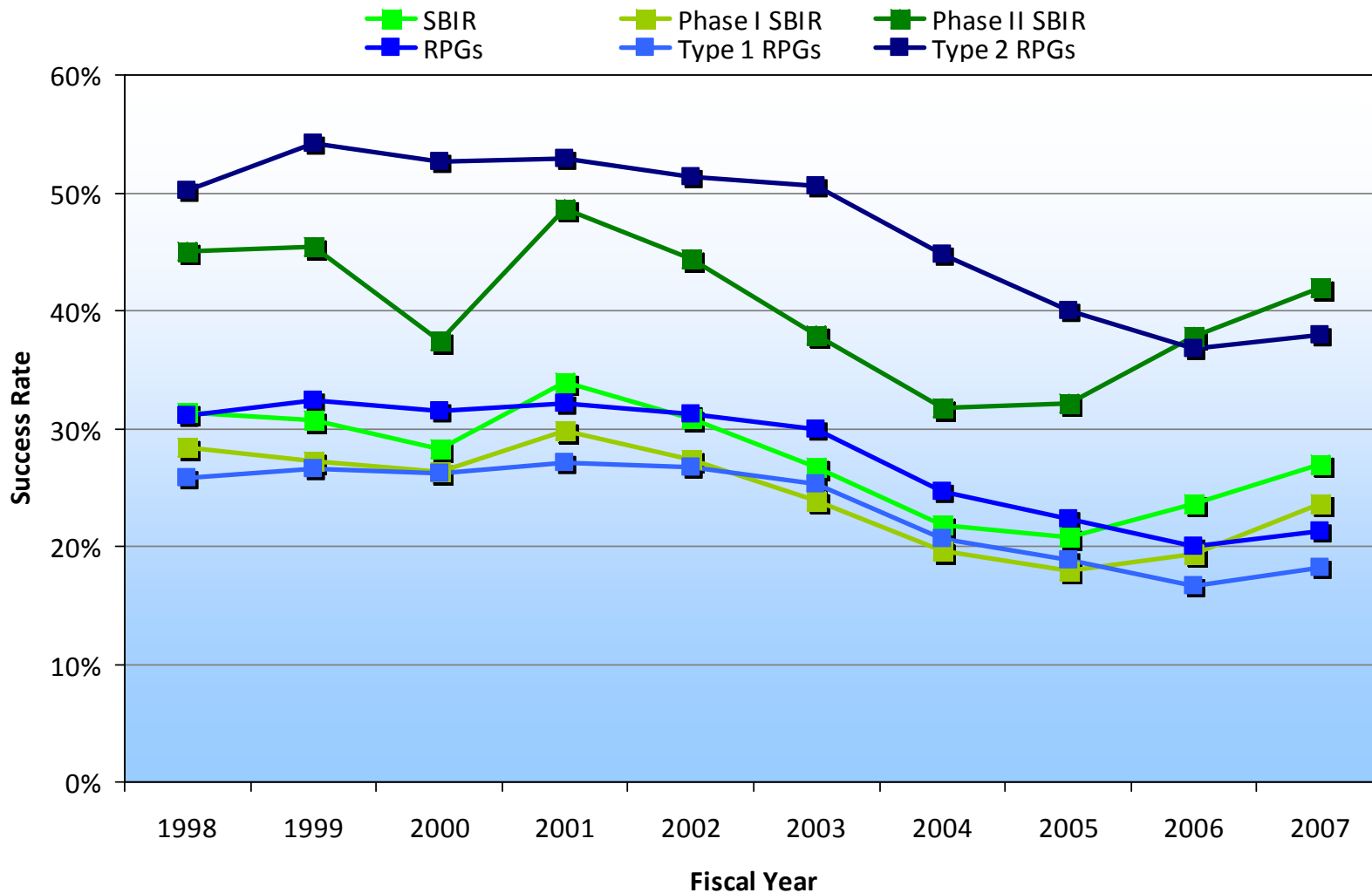


PHASE II SBIR AND TYPE 2 RPGS SUCCESS RATES



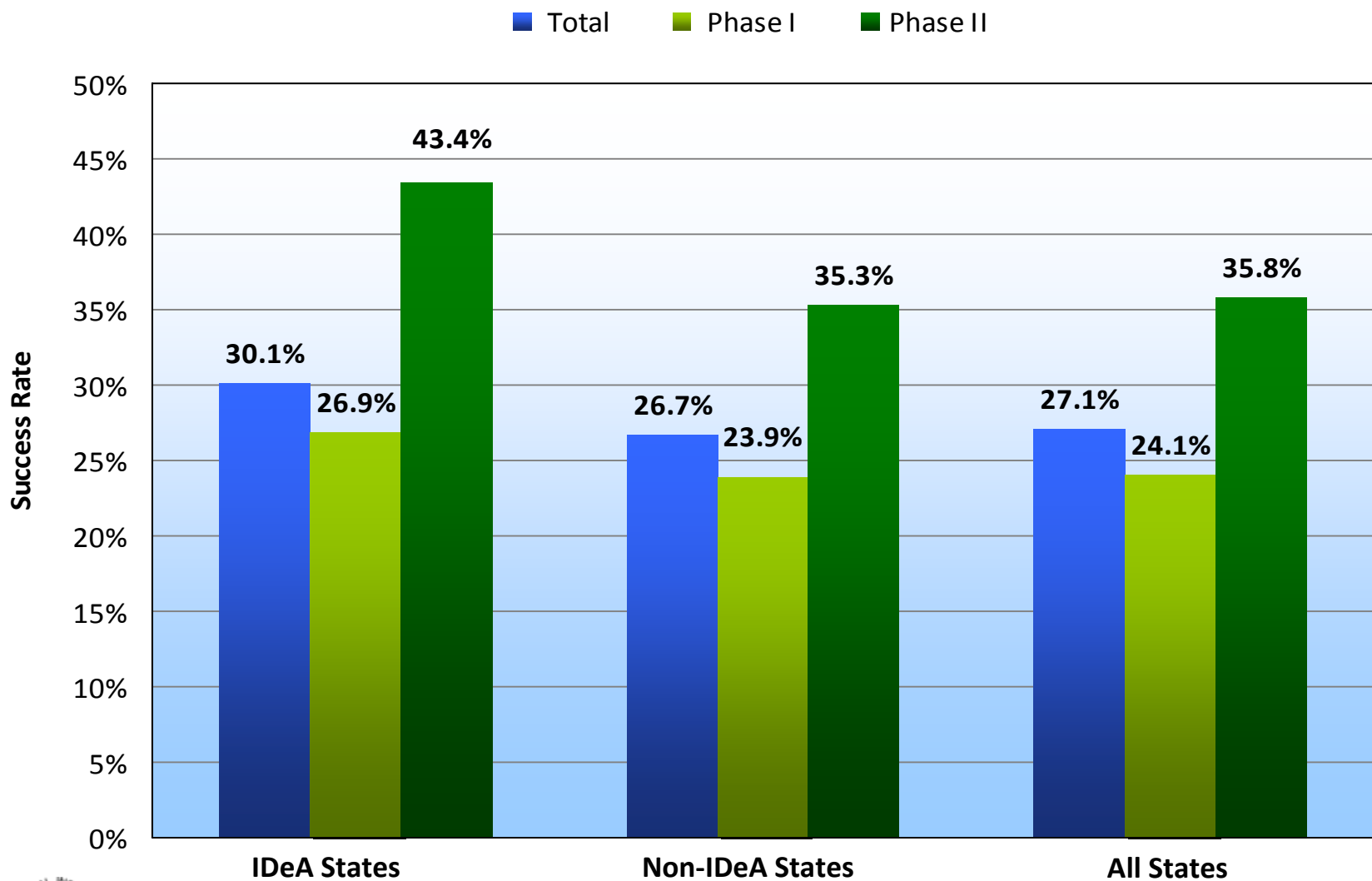


SBIR AND RPG SUCCESS RATES





SUCCESS RATES OF SBIR APPLICATIONS: INSTITUTIONAL DEVELOPMENT AWARD (IDeA) AND OTHER STATES FY 2007



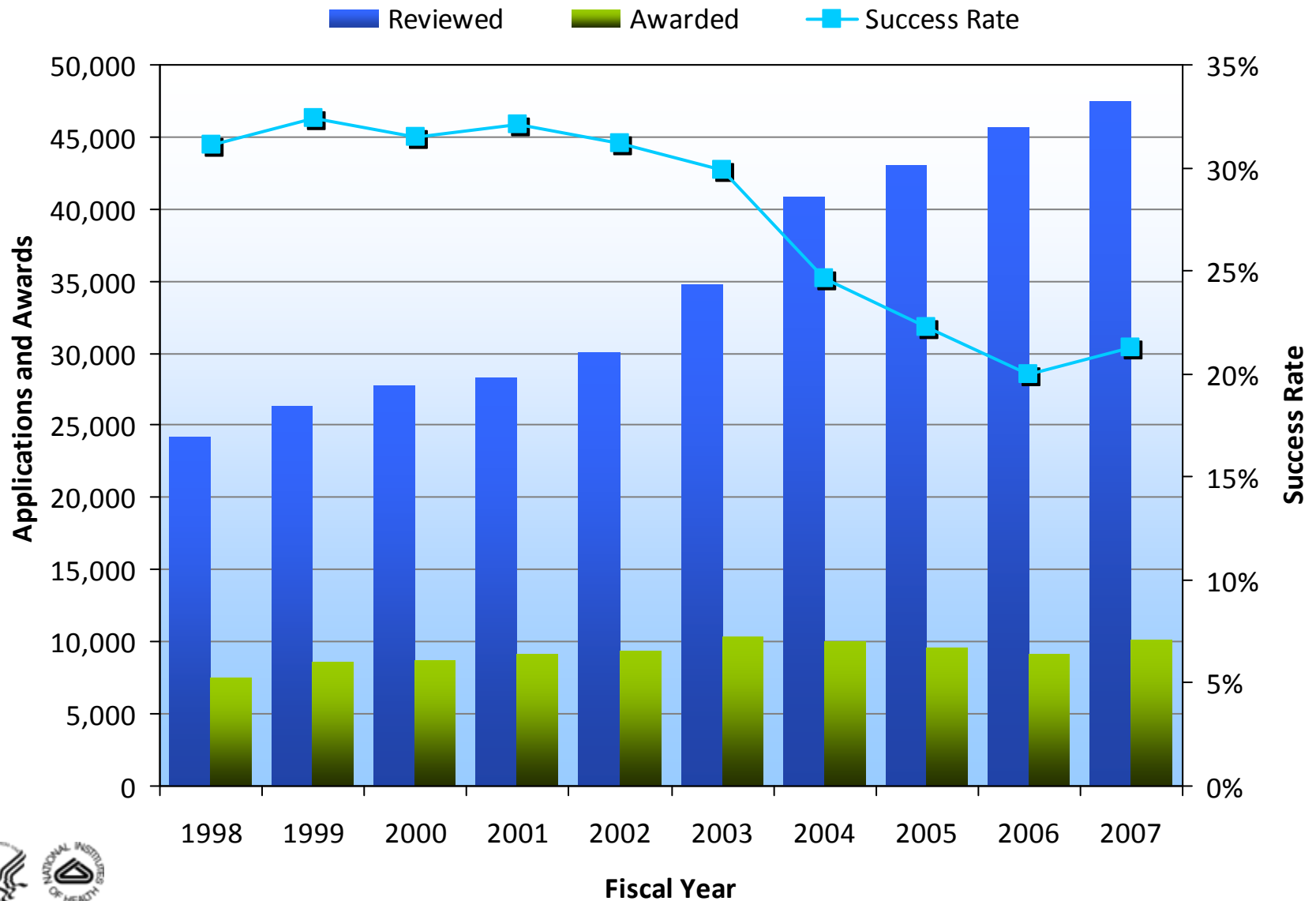


SUCCESS RATES: RESEARCH PROJECT GRANTS





RESEARCH PROJECT GRANTS APPLICATIONS, AWARDS, AND SUCCESS RATES





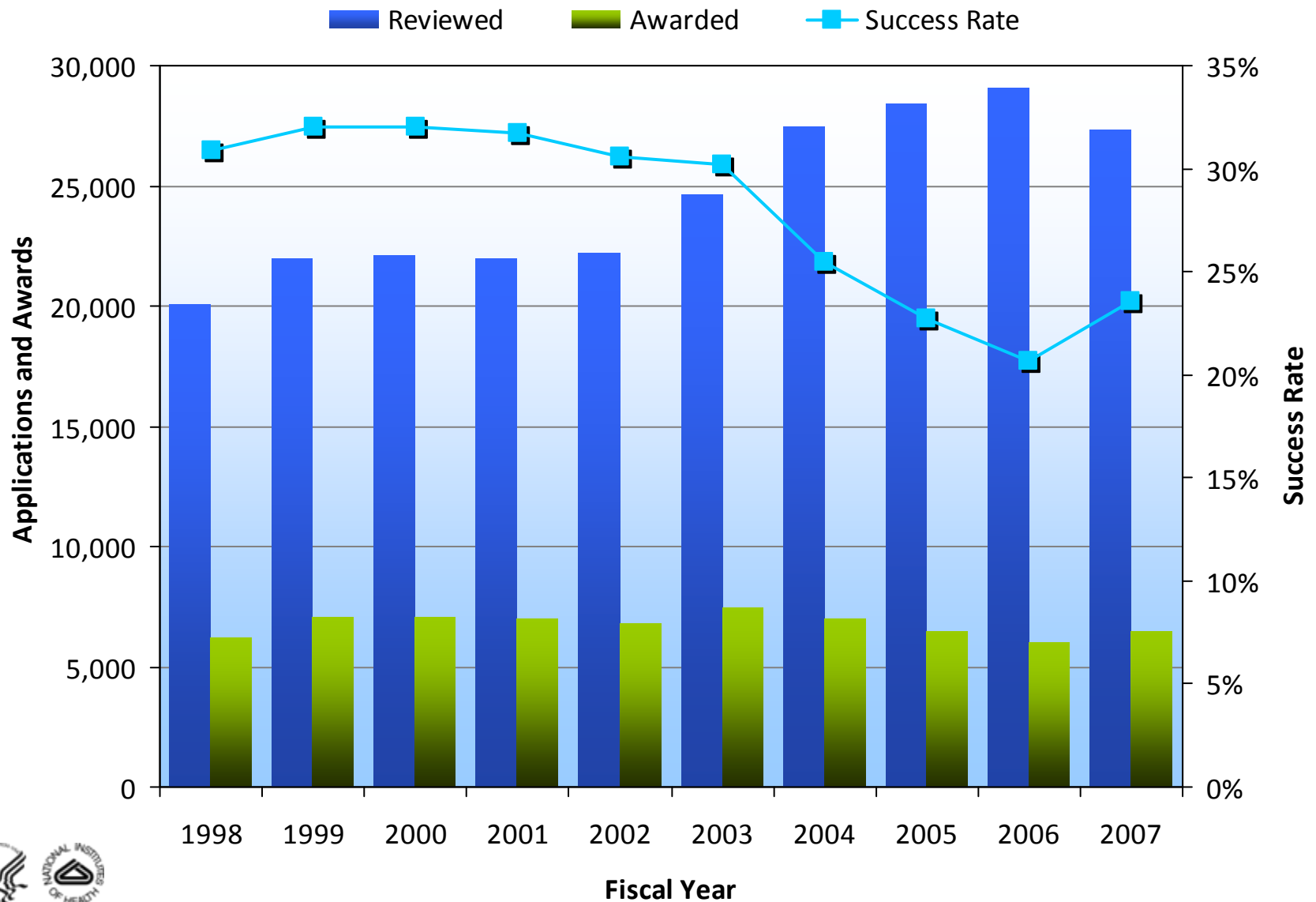
SUCCESS RATES:

R01-Equivalent Grants





R01-EQUIVALENT GRANTS APPLICATIONS, AWARDS, AND SUCCESS RATES





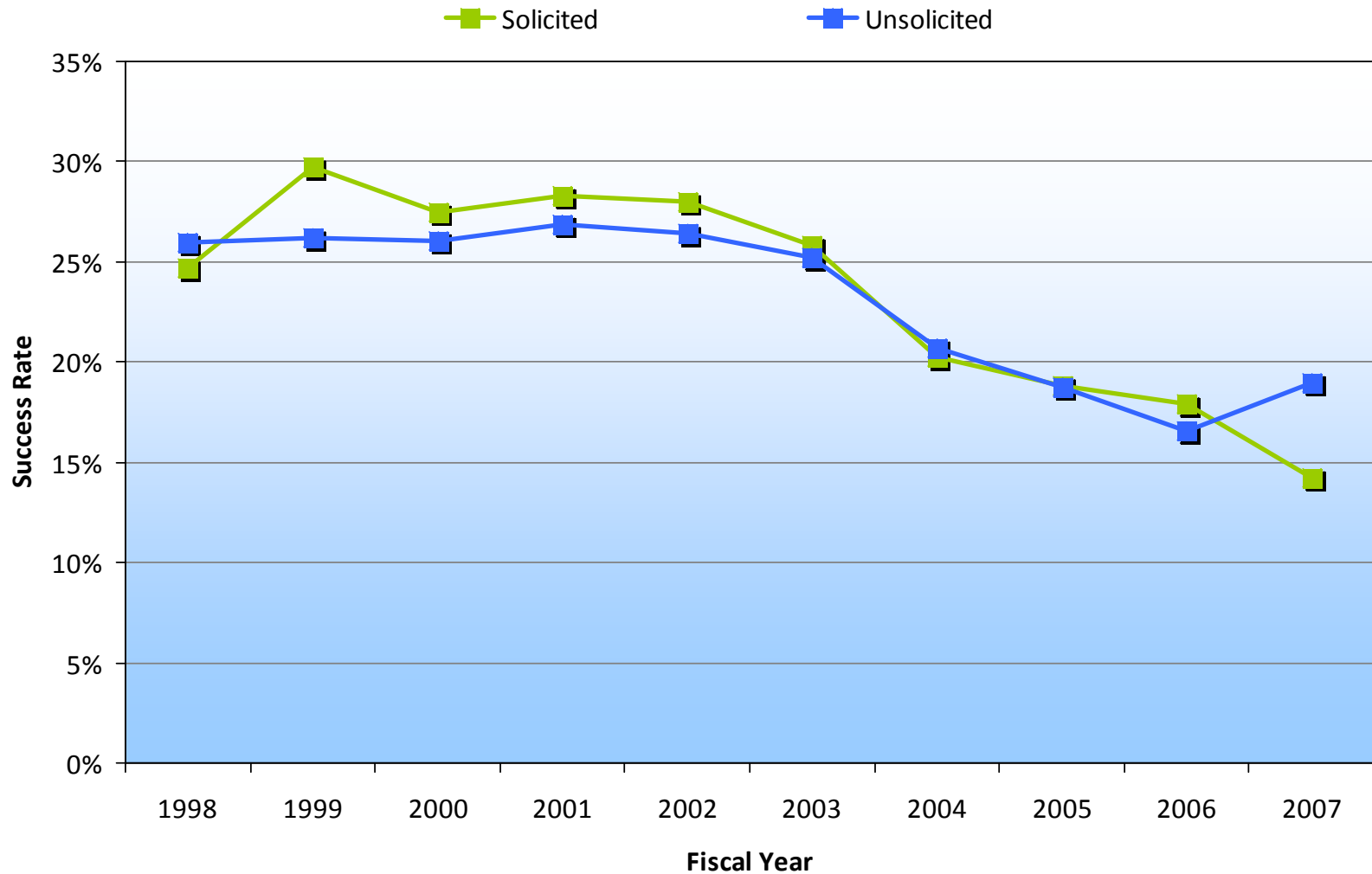
SUCCESS RATES:

Targeted Research





SUCCESS RATES OF SOLICITED AND UNSOLICITED NEW (TYPE 1) RESEARCH PROJECT GRANT APPLICATIONS





SUCCESS RATES:

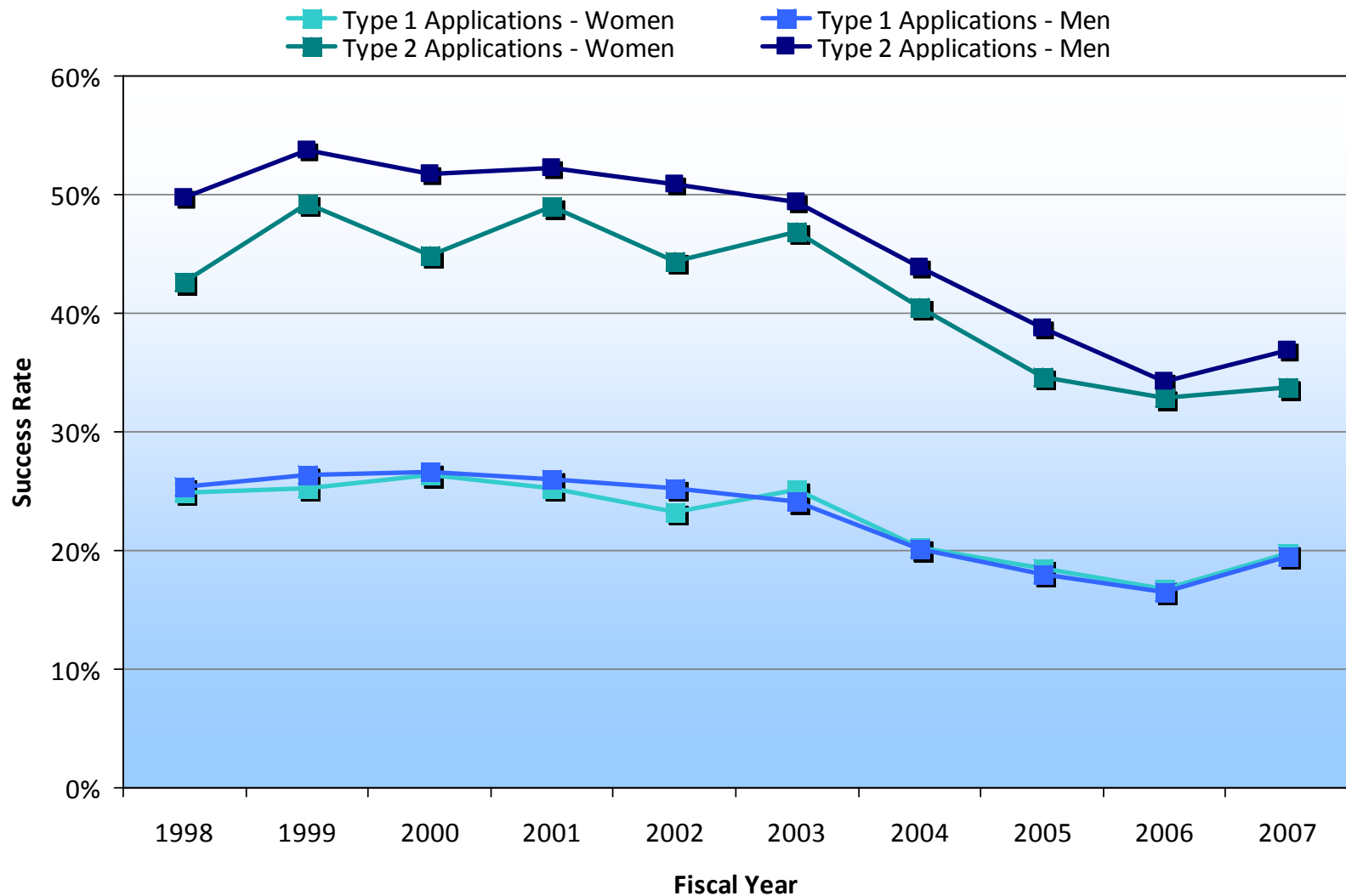
Women in Research

Indication of sex/gender is a voluntary field on the personal data form of the grant application. Information presented in this slide set is based upon those individual who have selected a sex/gender on the grant application. A small percentage of grants have uncoded sex/gender information and have therefore been excluded from the data presented.



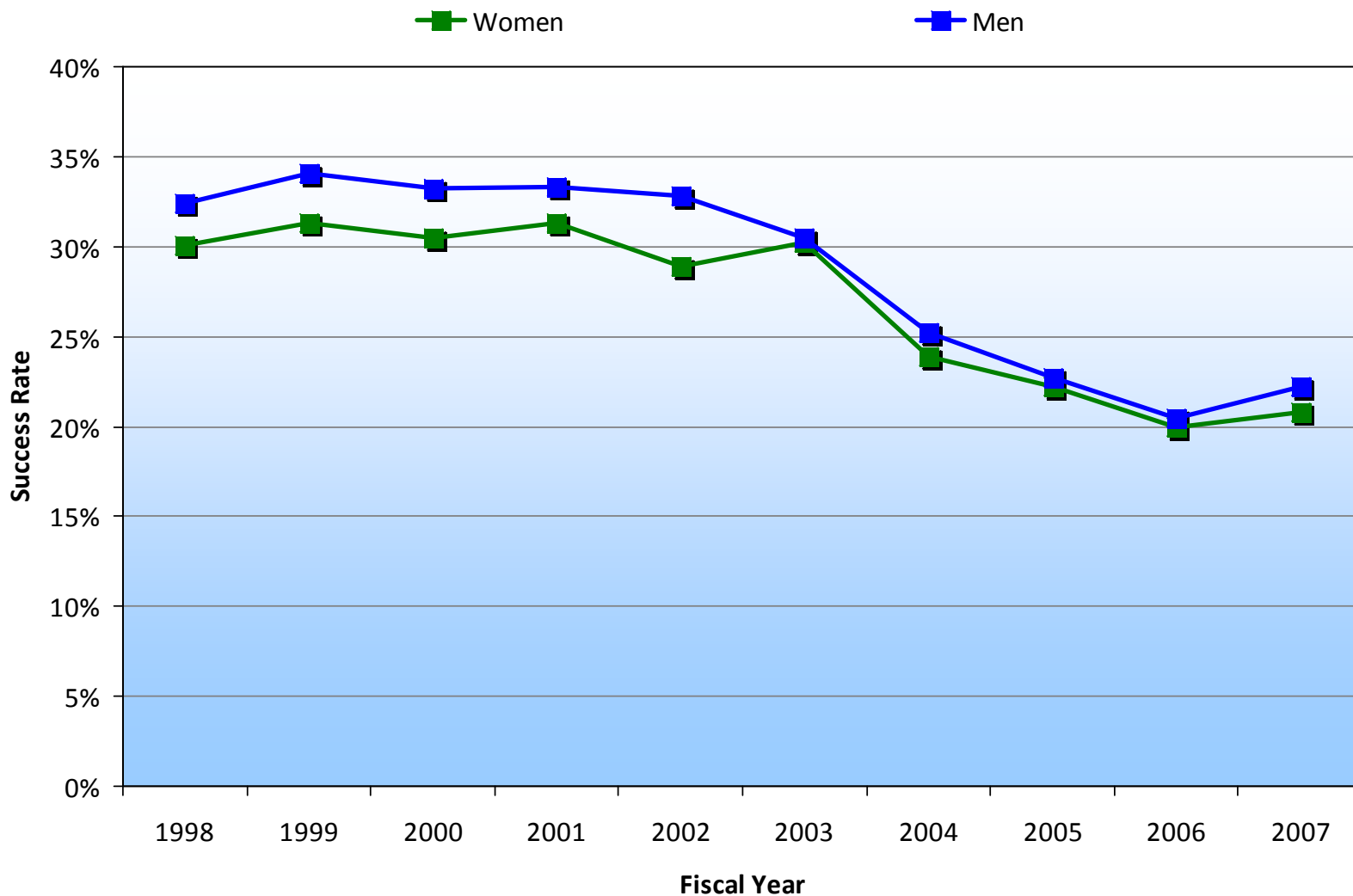


SUCCESS RATES OF WOMEN AND MEN ON NEW AND CONTINUING R01 APPLICATIONS





SUCCESS RATES OF WOMEN AND MEN ON COMPETING RESEARCH PROJECT GRANT APPLICATIONS





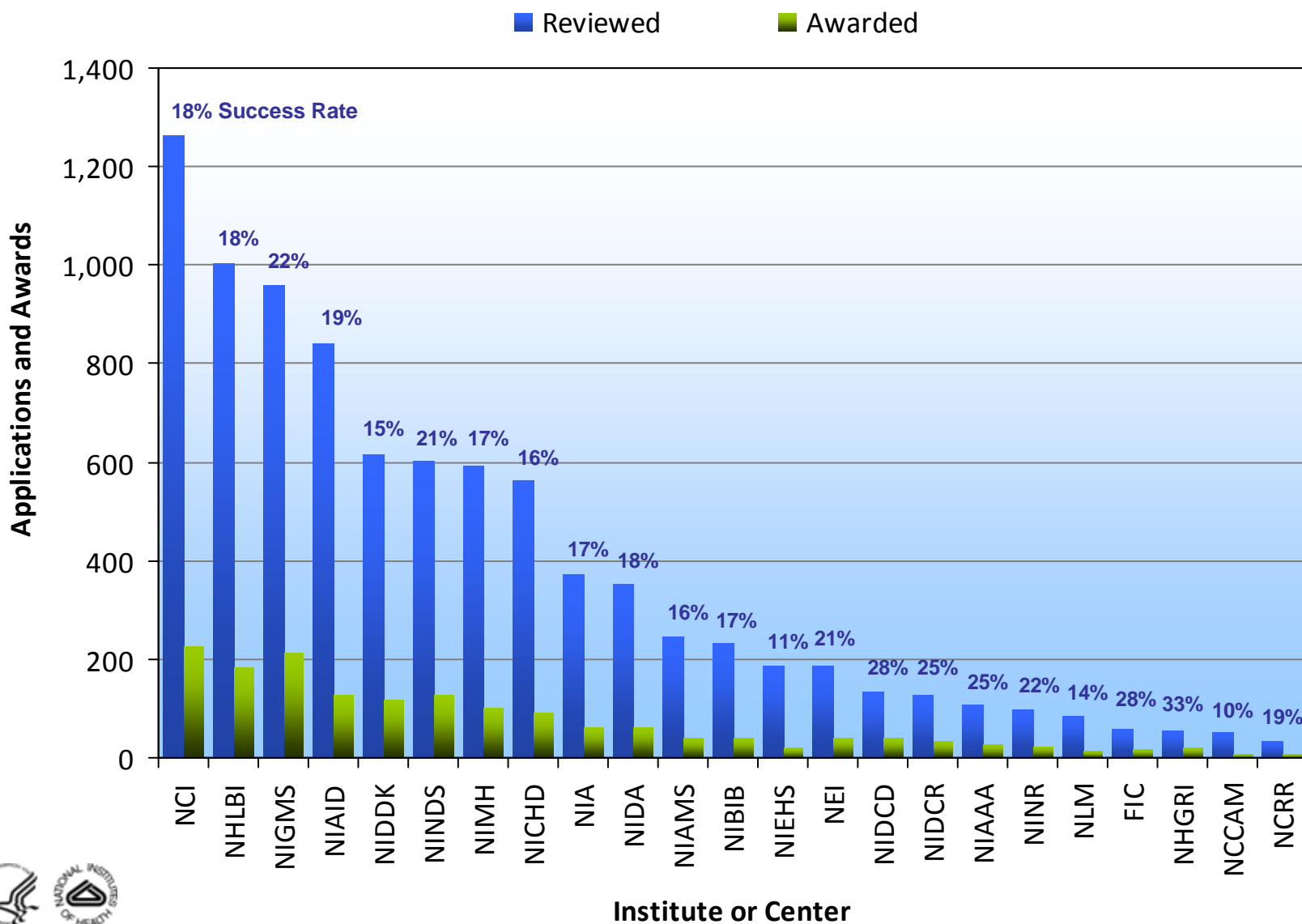
SUCCESS RATES:

First-Time Investigators





FIRST-TIME INVESTIGATORS APPLICATIONS, AWARDS, AND SUCCESS RATES FY 2007

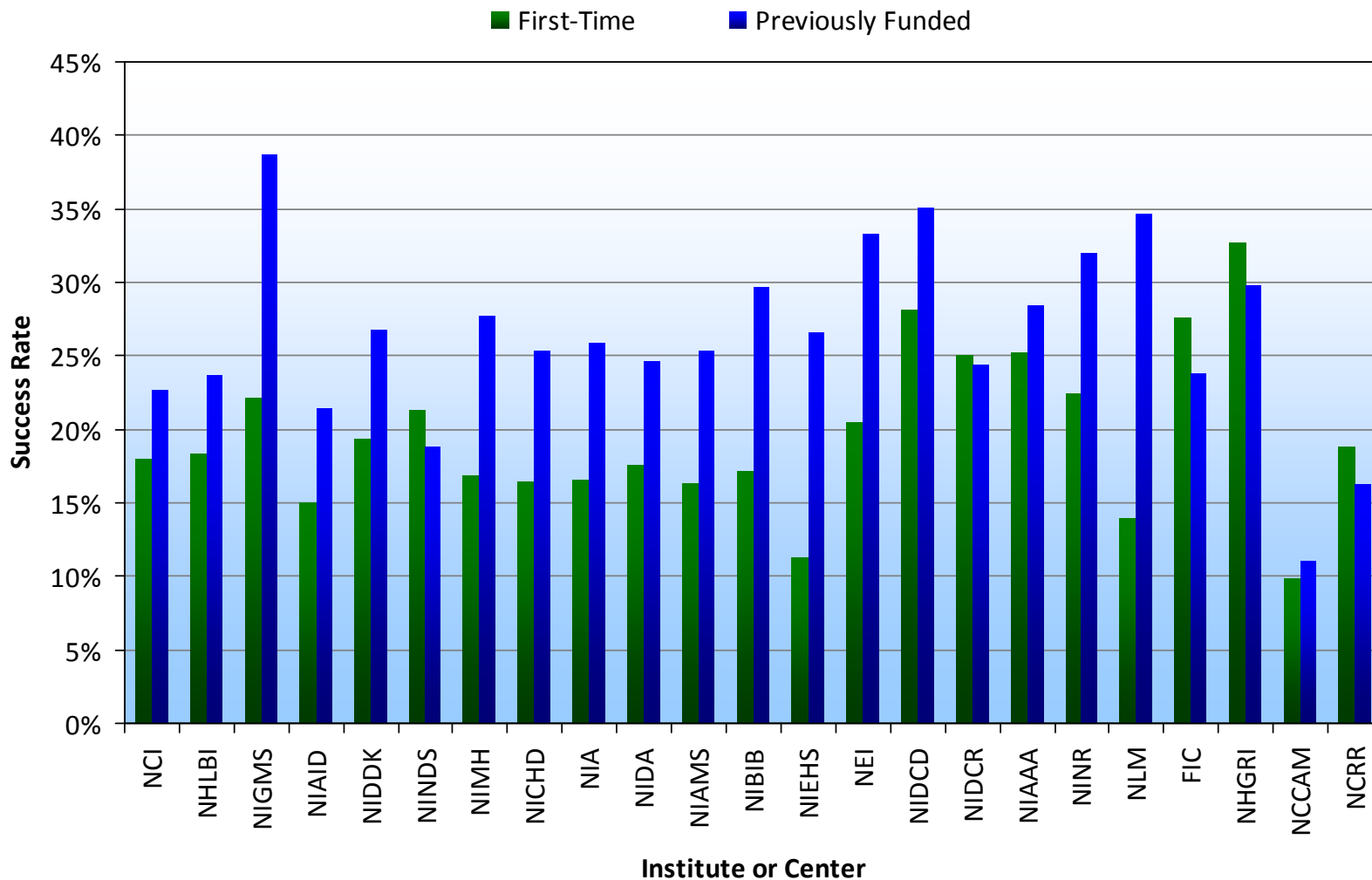


Institute or Center



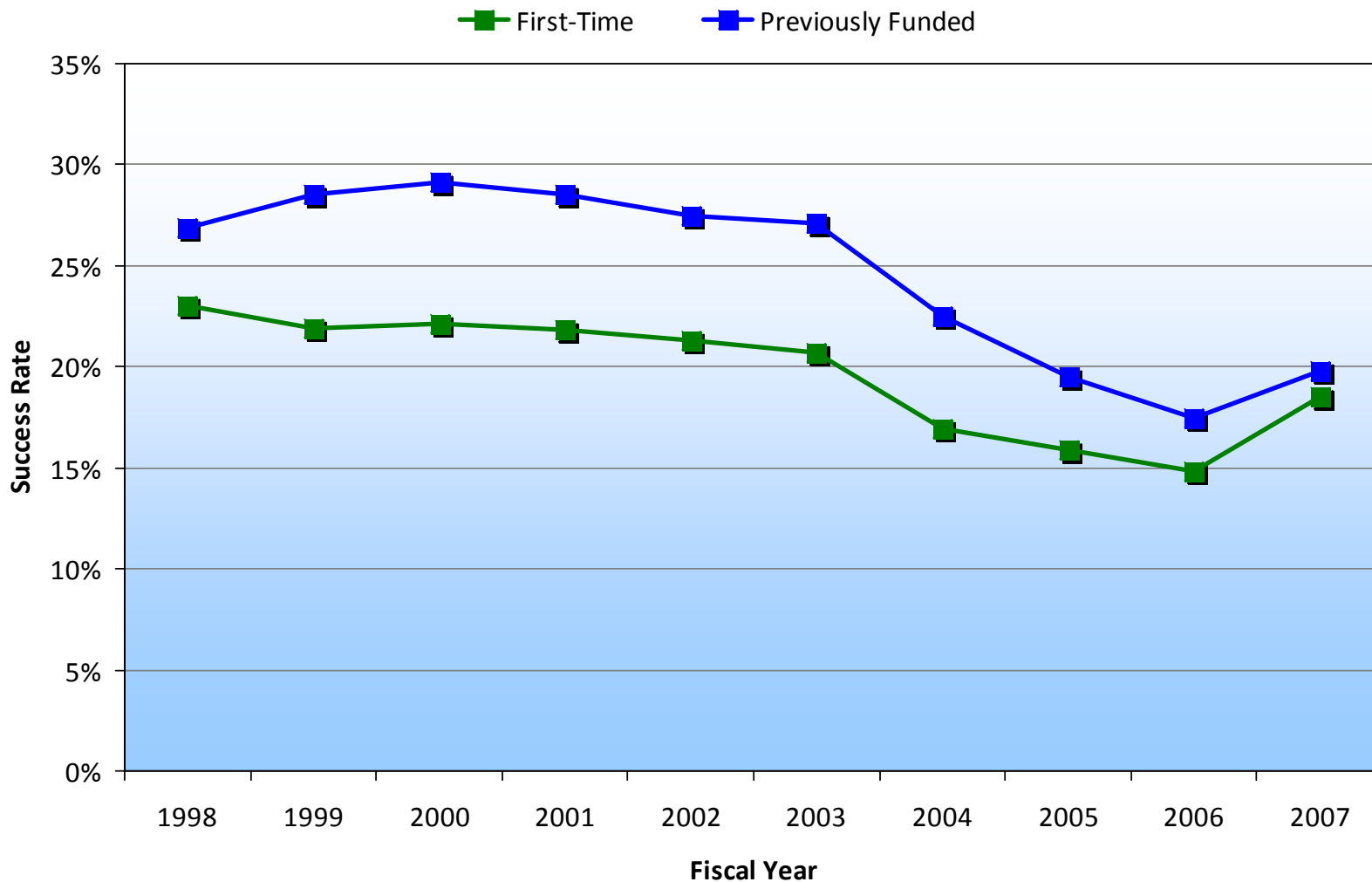


SUCCESS RATES OF R01-EQUIVALENT APPLICATIONS FROM FIRST-TIME AND ESTABLISHED INVESTIGATORS BY INSTITUTE OR CENTER, FY 2007





SUCCESS RATES OF NEW (TYPE 1) R01-EQUIVALENT APPLICATIONS FROM FIRST-TIME AND ESTABLISHED INVESTIGATORS





DEFINITIONS AND ADDITIONAL INFORMATION

TERM	DEFINITION	ADDITIONAL INFORMATION
Continuing Applications (Type 2)	Renewal (Competing Continuation) – Request for an additional term of support based on a funded previous project; must compete for available funds.	
First-Time Investigator	<p>First-Time R01 Equivalent Investigators are defined as or Principal Investigators (PI) who have not previously competed successfully for a major NIH competing research grant award prior to receiving a competing NIH R01 Equivalent (R01, R23, R29, R37) award.</p> <p>First-Time Research Project Grant (RPG) Investigators are defined as PIs who have not previously competed successfully for an NIH research project grant.</p> <p>In normal usage “First-Time Investigators” may also be called “New Investigators”</p>	New Investigators Program
Kirschstein – NRSA (Ruth L. Kirschstein National Research Service Award) Institutional Research Training and Fellowship Mechanisms	<p>NIH’s primary research training program which provides awards to both individuals and institutions to provide research training in specified health-related areas.</p> <p>Activities are as follows: T32,T34,T35, T36, T90, TL1, TL2, TU2, F30, F31, F32, F33, F3 and F35 (until 1998)</p>	Ruth L. Kirschstein National Research Service Award (NRSA)
New Application (Type 1)	Request for Department of Health and Human Services support of a project that has not yet been funded	
R01 Equivalent Grants	A subset of research project grants which Includes R01, R23, R29 and R37 activities	
Research Career	<p>Funding mechanisms for Ph.D.s and clinicians who wish to develop a career in biomedical research.</p> <p>Activities are as follows: K01, K02, K04, K05, K06, K07, K08, K11, K12, K14, K15, K16, K17, K18, K20, K22, K23, K24, K25, K36, K30, K99, KL1 and KL2</p>	K Kiosk – Information about NIH Career Development Awards



To access data tables for each slide while in presentation view right-click on the slide and select “edit slides” Then double-click on the graph image and the datasheet should appear in a separate window or select the data tab from the spreadsheet. If the datasheet does not appear, right-click in the chart area and select “datasheet”





DEFINITIONS AND ADDITIONAL INFORMATION

TERM	DEFINITION	ADDITIONAL INFORMATION
Research Grants	Extramural awards made for Other Research Grants, Research Centers , Research Projects, and SBIR/STTRs. Includes the following: R, P, M, S, K, U series (excluding UC6) DP1, DP2, D42,G12.	
Research Project Grants (RPGs)	Includes the following selected Research Grant and Cooperative Agreement activities: R00, R01, R03, R15, R21, R22, R23, R29, R33, R34, R35, R36, R37, R55, R56, RL1, RL2, RL5, RL9, P01, P42, PN1, UC1, UC7, U01, U19, U34, DP1, and DP2. Also includes RPGs from NLM as of FY07. Exceptions: <ul style="list-style-type: none"> • In 1980 & 1981 activity code, U01 was not a research project . • From 1989 until 1992 activity code, R55 was not a research project. • In 1986 NINR did not have any research projects. • From 1984 until 1989 NCRR did not have any research projects. • FIC did not have any research projects until 1994. • From 1991 until 1996 NCRR did not consider R21's research projects. • NLM had no research projects prior to 2007. • In FY 2002, P41s not RPG for NIGMS. 	Activity Code Descriptions
SBIR/STTR	SBIR awards are designed to support projects from small businesses ultimately having commercial viability. STTR awards are a A 3-year pilot program begun in FY 1994 under the Small Business Innovation Research Program designed to foster technological innovations through cooperative efforts between small business and research institutions. Activities are as follows: SBIR - R43, R44, U43 and U44. STTR - R41, R42	SBIR and STTR Programs SBIR Funding Opportunities
SBIR Phase I	R43 and U43	
SBIR Phase II	R44 and U44	





DEFINITIONS AND ADDITIONAL INFORMATION

TERM	DEFINITION	ADDITIONAL INFORMATION
Solicited Research	Responses to Requests for Applications (RFA's)	Funding Opportunities and Notices
Success Rate	<p>Indicates the percentage of reviewed applications receiving funding computed on a fiscal year basis. It is determined by dividing the number of competing applications funded by the sum of the total number of competing applications reviewed and the number of funded carryovers.</p> <p><i>Success rates differ from funding rates in that calculated percentages are based on applications and not applicants (individuals).</i></p> <p>NOTE: Applications having one or more amendments in the same fiscal year are only counted once.</p>	

