

Table IV-1
FEMALE BREAST CANCER (Invasive)

TRENDS IN SEER INCIDENCE^a AND U.S. MORTALITY^b USING THE JOINPOINT REGRESSION PROGRAM, 1975-2005
WITH UP TO THREE JOINPOINTS BY RACE AND AGE

		Joinpoint Trend 1		Joinpoint Trend 2		Joinpoint Trend 3		Joinpoint Trend 4		AAPC ^c	
		Years	APC	Years	APC	Years	APC	Years	APC	1996-2005	2001-2005
<u>SEER Cancer Incidence^a</u>											
All Races	All Ages	1975-1980	-0.4	1980-1987	3.7*	1987-2001	0.4*	2001-2005	-3.1*	-1.1*	-3.1*
All Races	Under 50	1975-1980	-1.4	1980-1986	2.9*	1986-2005	-0.2*			-0.2*	-0.2*
All Races	50 and Over	1975-1982	0.8	1982-1986	5.8*	1986-2001	0.7*	2001-2005	-4.1*	-1.4*	-4.1*
White	All Ages	1975-1980	-0.3	1980-1987	3.7*	1987-2001	0.5*	2001-2005	-3.2*	-1.2*	-3.2*
White	Under 50	1975-1980	-1.2	1980-1986	2.8*	1986-2005	-0.2*			-0.2*	-0.2*
White	50 and Over	1975-1980	-0.1	1980-1987	4.2*	1987-2001	0.7*	2001-2005	-4.1*	-1.5*	-4.1*
Black	All Ages	1975-1993	2.2*	1993-2005	-0.5					-0.5	-0.5
Black	Under 50	1975-1991	1.4*	1991-2005	-0.8*					-0.8*	-0.8*
Black	50 and Over	1975-1995	2.4*	1995-2005	-0.8					-0.8	-0.8
<u>SEER Delay-Adjusted Incidence^a</u>											
All Races	All Ages	1975-1980	-0.6	1980-1986	4.1*	1986-2000	0.6*	2000-2005	-2.3*	-1.0*	-2.3*
All Races	Under 50	1975-1980	-1.4	1980-1986	2.9*	1986-2005	-0.2			-0.2	-0.2
All Races	50 and Over	1975-1982	0.8	1982-1986	5.8*	1986-2001	0.7*	2001-2005	-3.9*	-1.3*	-3.9*
White	All Ages	1975-1980	-0.3	1980-1987	3.7*	1987-2001	0.5*	2001-2005	-2.9*	-1.0*	-2.9*
White	Under 50	1975-1980	-1.1	1980-1986	2.7*	1986-2005	-0.2			-0.2	-0.2
White	50 and Over	1975-1980	-0.1	1980-1987	4.2*	1987-2001	0.7*	2001-2005	-3.8*	-1.3*	-3.8*
Black	All Ages	1975-1992	2.3*	1992-2005	-0.2					-0.2	-0.2
Black	Under 50	1975-1991	1.4*	1991-2005	-0.7*					-0.7*	-0.7*
Black	50 and Over	1975-1995	2.4*	1995-2005	-0.6					-0.6	-0.6
<u>U.S. Cancer Mortality^b</u>											
All Races	All Ages	1975-1990	0.4*	1990-2005	-2.2*					-2.2*	-2.2*
All Races	Under 50	1975-1990	-0.4*	1990-2005	-3.2*					-3.2*	-3.2*
All Races	50 and Over	1975-1990	0.6*	1990-2005	-2.0*					-2.0*	-2.0*
White	All Ages	1975-1990	0.3*	1990-2005	-2.4*					-2.4*	-2.4*
White	Under 50	1975-1990	-0.6*	1990-2005	-3.7*					-3.7*	-3.7*
White	50 and Over	1975-1990	0.5*	1990-2005	-2.1*					-2.1*	-2.1*
Black	All Ages	1975-1992	1.5*	1992-2005	-1.3*					-1.3*	-1.3*
Black	Under 50	1975-1988	1.7*	1988-2005	-1.9*					-1.9*	-1.9*
Black	50 and Over	1975-1993	1.6*	1993-2005	-1.2*					-1.2*	-1.2*

Joinpoint Regression Program Version 3.3.1, April 2008, National Cancer Institute. (<http://srab.cancer.gov/joinpoint/>).
The APC is the Annual Percent Change based on rates age-adjusted to the 2000 US Std Population (19 age groups - Census P25-1130).
Trends are from the SEER 9 areas (San Francisco, Connecticut, Detroit, Hawaii, Iowa, New Mexico, Seattle, Utah, and Atlanta).
Trends are from US Mortality Files, National Center for Health Statistics, Centers for Disease Control and Prevention.
The AAPC is the Average Annual Percent Change and is based on the APCs calculated by Joinpoint over the time range of 1975-2005.
The APC/AAPC is significantly different from zero ($p < .05$).

a
b
c
*

Table IV-1a
 FEMALE BREAST CANCER (Invasive)

TRENDS IN SEER INCIDENCE^a AND U.S. MORTALITY^b USING THE JOINPOINT REGRESSION PROGRAM, 1975-2005
 WITH UP TO FOUR JOINPOINTS BY RACE AND AGE

		Joinpoint Trend 1		Joinpoint Trend 2		Joinpoint Trend 3		Joinpoint Trend 4		Joinpoint Trend 5		AAPC ^c
		Years	APC	Years	APC	Years	APC	Years	APC	Years	APC	2001-2005
<u>SEER Cancer Incidence^a</u>												
All Races	All Ages	1975-1980	-0.5	1980-1987	4.0*	1987-1994	-0.2	1994-1999	1.7*	1999-2005	-2.4*	-2.4*
All Races	Under 50	1975-1980	-1.4	1980-1986	2.9*	1986-2005	-0.2*					-0.2*
All Races	50 and Over	1975-1982	0.8	1982-1987	5.3*	1987-1993	-0.3	1993-1999	1.9*	1999-2005	-2.9*	-2.9*
White	All Ages	1975-1980	-0.5	1980-1987	4.1*	1987-1994	-0.2	1994-1999	1.9*	1999-2005	-2.4*	-2.4*
White	Under 50	1975-1980	-1.2	1980-1986	2.8*	1986-2005	-0.2*					-0.2*
White	50 and Over	1975-1982	0.9	1982-1987	5.5*	1987-1993	-0.4	1993-1999	2.0*	1999-2005	-2.9*	-2.9*
Black	All Ages	1975-1993	2.2*	1993-2005	-0.5							-0.5
Black	Under 50	1975-1991	1.4*	1991-2005	-0.8*							-0.8*
Black	50 and Over	1975-1995	2.4*	1995-2005	-0.8							-0.8
<u>SEER Delay-Adjusted Incidence^a</u>												
All Races	All Ages	1975-1980	-0.6	1980-1987	4.0*	1987-1994	-0.2	1994-1999	1.7*	1999-2005	-2.2*	-2.2*
All Races	Under 50	1975-1980	-1.4	1980-1986	2.9*	1986-2005	-0.2					-0.2
All Races	50 and Over	1975-1982	0.8	1982-1987	5.4*	1987-1993	-0.3	1993-1999	1.9*	1999-2005	-2.7*	-2.7*
White	All Ages	1975-1980	-0.5	1980-1987	4.1*	1987-1994	-0.2	1994-1999	1.9*	1999-2005	-2.2*	-2.2*
White	Under 50	1975-1980	-1.1	1980-1986	2.7*	1986-2005	-0.2					-0.2
White	50 and Over	1975-1982	0.9	1982-1987	5.6*	1987-1993	-0.4	1993-1999	2.1*	1999-2005	-2.7*	-2.7*
Black	All Ages	1975-1992	2.3*	1992-2005	-0.2							-0.2
Black	Under 50	1975-1991	1.4*	1991-2005	-0.7*							-0.7*
Black	50 and Over	1975-1995	2.4*	1995-2005	-0.6							-0.6
<u>U.S. Cancer Mortality^b</u>												
All Races	All Ages	1975-1990	0.4*	1990-1995	-1.8*	1995-1998	-3.3*	1998-2005	-1.8*			-1.8*
All Races	Under 50	1975-1990	-0.4*	1990-2005	-3.2*							-3.2*
All Races	50 and Over	1975-1990	0.6*	1990-2005	-2.0*							-2.0*
White	All Ages	1975-1990	0.3*	1990-1995	-2.0*	1995-1998	-3.5*	1998-2005	-1.9*			-1.9*
White	Under 50	1975-1990	-0.6*	1990-2005	-3.7*							-3.7*
White	50 and Over	1975-1990	0.5*	1990-2005	-2.1*							-2.1*
Black	All Ages	1975-1992	1.5*	1992-2005	-1.3*							-1.3*
Black	Under 50	1975-1988	1.7*	1988-2005	-1.9*							-1.9*
Black	50 and Over	1975-1993	1.6*	1993-2005	-1.2*							-1.2*

Joinpoint Regression Program Version 3.3.1, April 2008, National Cancer Institute. (<http://srab.cancer.gov/joinpoint/>).

The APC is the Annual Percent Change based on rates age-adjusted to the 2000 US Std Population (19 age groups - Census P25-1130).

Trends are from the SEER 9 areas (San Francisco, Connecticut, Detroit, Hawaii, Iowa, New Mexico, Seattle, Utah, and Atlanta).

Trends are from US Mortality Files, National Center for Health Statistics, Centers for Disease Control and Prevention.

The AAPC is the Average Annual Percent Change and is based on the APCs calculated by Joinpoint over the time range of 1975-2005.

The APC/AAPC is significantly different from zero ($p < .05$).

a
b
c
*

Table IV-2
 FEMALE BREAST CANCER (*In Situ*)

TRENDS IN SEER INCIDENCE^a USING THE JOINPOINT REGRESSION PROGRAM, 1975-2005
 WITH UP TO THREE JOINPOINTS BY RACE AND AGE

		Joinpoint Trend 1		Joinpoint Trend 2		Joinpoint Trend 3		Joinpoint Trend 4		AAPC ^b	
		Years	APC	Years	APC	Years	APC	Years	APC	1996-2005	2001-2005
<u>SEER Cancer Incidence^a</u>											
All Races	All Ages	1975-1982	-0.8	1982-1986	32.2*	1986-2000	6.1*	2000-2005	-1.1	2.1*	-1.1
All Races	Under 50	1975-1982	-3.4	1982-1985	37.9	1985-1999	4.2*	1999-2005	0.7	1.9*	0.7
All Races	50 and Over	1975-1980	-5.9	1980-1987	24.0*	1987-2000	7.0*	2000-2005	-1.6	2.1*	-1.6
White	All Ages	1975-1982	-0.7	1982-1986	32.9*	1986-2000	5.9*	2000-2005	-0.9	2.1*	-0.9
White	Under 50	1975-1982	-3.9	1982-1985	40.2*	1985-1999	4.1*	1999-2005	0.9	2.0*	0.9
White	50 and Over	1975-1981	-1.3	1981-1987	26.0*	1987-2000	6.6*	2000-2005	-1.4	2.1*	-1.4
Black	All Ages	1975-1981	3.2	1981-1988	18.2*	1988-1998	8.0*	1998-2005	0.8	2.4*	0.8
Black	Under 50	1975-1997	7.9*	1997-2005	-1.0					0.0	-1.0
Black	50 and Over	1975-1980	-1.8	1980-1988	20.4*	1988-1999	8.5*	1999-2005	0.3	3.0*	0.3
<u>SEER Delay-Adjusted Incidence^a</u>											
All Races	All Ages	1975-1982	-0.8	1982-1986	32.2*	1986-2000	6.1*	2000-2005	-1.0	2.1*	-1.0
All Races	Under 50	1975-1982	-3.4	1982-1985	38.0	1985-1999	4.2*	1999-2005	0.8	1.9*	0.8
All Races	50 and Over	1975-1980	-5.9	1980-1987	24.0*	1987-2000	6.9*	2000-2005	-1.5	2.2*	-1.5
White	All Ages	1975-1982	-0.7	1982-1986	32.9*	1986-2000	5.9*	2000-2005	-0.8	2.2*	-0.8
White	Under 50	1975-1982	-3.9	1982-1985	40.2*	1985-1999	4.1*	1999-2005	1.1	2.1*	1.1
White	50 and Over	1975-1981	-1.3	1981-1987	26.1*	1987-2000	6.7*	2000-2005	-1.2	2.2*	-1.2
Black	All Ages	1975-1981	3.2	1981-1988	18.2*	1988-1998	8.0*	1998-2005	1.0	2.5*	1.0
Black	Under 50	1975-1997	7.9*	1997-2005	-0.9					0.1	-0.9
Black	50 and Over	1975-1980	-1.8	1980-1988	20.5*	1988-1999	8.5*	1999-2005	0.4	3.1*	0.4

Joinpoint Regression Program Version 3.3.1, April 2008, National Cancer Institute. (<http://srab.cancer.gov/joinpoint/>).
 The APC is the Annual Percent Change based on rates age-adjusted to the 2000 US Std Population (19 age groups - Census P25-1130).
 Trends are from the SEER 9 areas (San Francisco, Connecticut, Detroit, Hawaii, Iowa, New Mexico, Seattle, Utah, and Atlanta).
 The AAPC is the Average Annual Percent Change and is based on the APCs calculated by Joinpoint over the time range of 1975-2005.
 The APC/AAPC is significantly different from zero ($p < .05$).

a
 b
 *

Table IV-2a
 FEMALE BREAST CANCER (*In Situ*)

TRENDS IN SEER INCIDENCE^a USING THE JOINTPOINT REGRESSION PROGRAM, 1975-2005
 WITH UP TO FOUR JOINTPOINTS BY RACE AND AGE

		Joinpoint Trend 1		Joinpoint Trend 2		Joinpoint Trend 3		Joinpoint Trend 4		Joinpoint Trend 5		AAPC ^c
		Years	APC	Years	APC	Years	APC	Years	APC	Years	APC	2001-2005
<u>SEER Cancer Incidence^a</u>												
All Races	All Ages	1975-1981	-3.0	1981-1987	24.9*	1987-1995	4.2*	1995-1998	11.9*	1998-2005	-0.1	-0.1
All Races	Under 50	1975-1982	-2.6	1982-1986	30.1*	1986-1994	2.3	1994-1998	7.1	1998-2005	0.5	0.5
All Races	50 and Over	1975-1981	-2.3	1981-1987	27.4*	1987-1994	5.1*	1994-1999	9.7*	1999-2005	-1.1	-1.1
White	All Ages	1975-1981	-2.9	1981-1987	25.4*	1987-1995	3.9*	1995-1998	12.0*	1998-2005	0.0	0.0
White	Under 50	1975-1982	-3.9	1982-1985	40.2*	1985-1999	4.1*	1999-2005	0.9			0.9
White	50 and Over	1975-1981	-1.8	1981-1987	27.5*	1987-1995	4.9*	1995-1998	13.1*	1998-2005	-0.2	-0.2
Black	All Ages	1975-1983	6.2*	1983-1988	23.3*	1988-1993	3.5	1993-1998	11.1*	1998-2005	0.1	0.1
Black	Under 50	1975-1997	7.9*	1997-2005	-1.0							-1.0
Black	50 and Over	1975-1980	-1.8	1980-1988	20.4*	1988-1999	8.5*	1999-2005	0.3			0.3
<u>SEER Delay-Adjusted Incidence^a</u>												
All Races	All Ages	1975-1981	-3.0	1981-1987	24.9*	1987-1995	4.2*	1995-1998	11.8*	1998-2005	0.0	0.0
All Races	Under 50	1975-1982	-2.6	1982-1986	30.1*	1986-1994	2.3	1994-1998	7.0	1998-2005	0.6	0.6
All Races	50 and Over	1975-1981	-2.3	1981-1987	27.3*	1987-1994	5.1*	1994-1999	9.6*	1999-2005	-1.0	-1.0
White	All Ages	1975-1981	-2.9	1981-1987	25.4*	1987-1995	3.9*	1995-1998	11.9*	1998-2005	0.1	0.1
White	Under 50	1975-1982	-3.9	1982-1985	40.2*	1985-1999	4.1*	1999-2005	1.1			1.1
White	50 and Over	1975-1981	-1.8	1981-1987	27.5*	1987-1995	5.0*	1995-1998	13.1*	1998-2005	-0.1	-0.1
Black	All Ages	1975-1983	6.2*	1983-1988	23.3*	1988-1993	3.5	1993-1998	11.1*	1998-2005	0.2	0.2
Black	Under 50	1975-1997	7.9*	1997-2005	-0.9							-0.9
Black	50 and Over	1975-1980	-1.8	1980-1988	20.5*	1988-1999	8.5*	1999-2005	0.4			0.4

Joinpoint Regression Program Version 3.3.1, April 2008, National Cancer Institute. (<http://srab.cancer.gov/joinpoint/>).

The APC is the Annual Percent Change based on rates age-adjusted to the 2000 US Std Population (19 age groups - Census P25-1130). Trends are from the SEER 9 areas (San Francisco, Connecticut, Detroit, Hawaii, Iowa, New Mexico, Seattle, Utah, and Atlanta).

The AAPC is the Average Annual Percent Change and is based on the APCs calculated by Joinpoint over the time range of 1975-2005.

The APC/AAPC is significantly different from zero ($p < .05$).

^a
^b
^{*}

Table IV-3
BREAST CANCER (Invasive)

AGE ADJUSTED SEER INCIDENCE^a RATES BY YEAR, RACE AND SEX

	<u>All Races</u>			<u>Whites</u>			<u>Blacks</u>		
	<u>Total</u>	<u>Males</u>	<u>Females</u>	<u>Total</u>	<u>Males</u>	<u>Females</u>	<u>Total</u>	<u>Males</u>	<u>Females</u>
<u>AGE-ADJUSTED RATES</u>									
<u>YEAR OF DIAGNOSIS:</u>									
1975	58.1	0.9	105.1	59.5	0.9	107.4	52.2	-	93.7
1976	56.4	1.1	101.9	58.1	1.1	104.8	48.0	-	85.3
1977	56.0	1.0	100.8	57.5	0.9	103.4	49.7	-	87.0
1978	55.8	0.9	100.6	57.5	0.9	103.6	48.3	-	86.1
1979	56.8	1.0	102.1	58.3	0.9	104.7	49.8	-	86.8
1980	56.9	0.9	102.2	58.5	1.0	105.1	50.5	-	89.2
1981	59.3	1.0	106.3	61.2	0.9	109.9	54.4	-	94.2
1982	59.2	1.0	106.4	61.1	0.9	110.0	54.0	-	93.7
1983	61.9	1.0	111.1	63.7	1.1	114.5	58.8	-	103.4
1984	64.4	0.9	115.9	66.6	0.9	119.9	58.3	-	102.2
1985	69.1	1.0	124.2	71.0	1.0	127.9	64.0	-	111.5
1986	70.4	0.9	126.8	72.3	1.0	130.4	66.2	-	115.0
1987	74.7	1.0	134.4	77.8	1.0	140.3	63.0	-	109.3
1988	73.0	1.2	131.2	75.6	1.2	136.3	68.9	2.8	118.6
1989	70.7	1.1	127.1	73.3	1.1	132.3	60.5	-	104.8
1990	73.1	1.1	131.7	75.3	1.2	136.2	68.2	-	118.1
1991	74.0	1.1	133.7	76.6	1.2	138.7	67.4	-	117.4
1992	73.0	1.0	131.9	74.7	1.0	135.7	71.3	-	123.6
1993	71.3	1.1	129.1	73.2	1.0	133.1	68.9	-	119.5
1994	72.0	1.1	130.8	74.2	1.1	135.6	70.4	-	122.1
1995	72.7	1.0	132.4	75.0	0.9	137.4	71.6	-	123.8
1996	73.2	1.3	133.4	75.2	1.3	137.9	71.1	-	123.2
1997	75.4	1.1	137.6	77.5	1.1	142.5	71.8	-	124.2
1998	77.1	1.1	141.1	79.6	1.1	146.5	70.4	-	122.6
1999	76.9	1.0	140.9	79.4	1.0	146.6	72.3	2.2	124.9
2000	74.1	1.2	136.0	77.0	1.2	142.6	67.6	2.9	116.3
2001	75.0	1.2	137.7	77.7	1.2	143.9	65.7	1.5	113.8
2002	72.9	1.2	134.4	75.2	1.1	140.0	69.6	2.1	120.4
2003	67.9	1.3	125.2	69.8	1.3	129.9	69.9	1.6	121.4
2004	68.0	1.2	125.7	69.6	1.3	129.8	69.1	1.6	120.0
2005	66.8	1.2	123.7	68.7	1.3	128.6	65.2	-	113.3
1975-2005	68.6	1.1	124.6	70.6	1.1	128.6	64.5	1.6	112.2

^a SEER 9 areas (San Francisco, Connecticut, Detroit, Hawaii, Iowa, New Mexico, Seattle, Utah, and Atlanta). Rates are per 100,000 and are age-adjusted to the 2000 US Std Population (19 age groups - Census P25-1130).

- Statistic not shown. Rate based on less than 16 cases for the time interval.

Table IV-4
BREAST CANCER (Invasive)

AGE-ADJUSTED U.S. DEATH^a RATES BY YEAR, RACE AND SEX

	All Races			Whites			Blacks		
	Total	Males	Females	Total	Males	Females	Total	Males	Females
<u>AGE-ADJUSTED RATES</u>									
YEAR OF DEATH:									
1975	17.8	0.4	31.4	18.0	0.4	31.8	16.8	0.4	29.5
1976	18.1	0.4	31.8	18.2	0.4	32.2	17.6	0.6	30.5
1977	18.5	0.4	32.5	18.6	0.4	32.7	18.9	0.5	32.8
1978	18.0	0.4	31.7	18.1	0.3	31.9	18.6	0.6	32.1
1979	17.7	0.3	31.2	17.9	0.3	31.5	17.9	0.5	30.8
1980	18.0	0.3	31.7	18.1	0.3	31.9	18.4	0.4	31.7
1981	18.2	0.3	31.9	18.3	0.3	32.1	19.0	0.5	32.6
1982	18.4	0.3	32.2	18.4	0.3	32.3	19.7	0.6	33.7
1983	18.3	0.3	32.1	18.4	0.3	32.2	19.6	0.5	33.5
1984	18.8	0.3	32.9	18.8	0.3	32.9	21.0	0.5	35.9
1985	18.8	0.3	33.0	18.9	0.3	33.1	20.3	0.4	34.9
1986	18.8	0.3	32.9	18.8	0.3	32.9	20.7	0.4	35.4
1987	18.7	0.3	32.7	18.6	0.3	32.6	21.5	0.5	36.7
1988	19.0	0.3	33.2	18.9	0.3	33.1	22.4	0.9	37.8
1989	19.0	0.3	33.2	18.9	0.3	33.2	21.6	0.5	36.6
1990	18.9	0.3	33.1	18.8	0.3	33.0	22.5	0.5	38.0
1991	18.7	0.3	32.7	18.5	0.3	32.4	22.6	0.4	38.3
1992	18.1	0.3	31.6	17.9	0.3	31.4	21.9	0.4	37.1
1993	18.0	0.4	31.4	17.7	0.3	31.1	22.6	0.7	38.0
1994	17.7	0.4	30.9	17.4	0.3	30.6	22.4	0.6	37.7
1995	17.4	0.4	30.6	17.1	0.3	30.1	22.7	0.8	38.2
1996	16.8	0.3	29.5	16.5	0.3	29.0	22.1	0.7	37.1
1997	16.1	0.3	28.2	15.7	0.3	27.6	22.3	0.6	37.4
1998	15.7	0.3	27.5	15.3	0.3	27.0	21.1	0.6	35.5
1999	15.2	0.3	26.6	14.8	0.3	26.0	20.9	0.7	35.2
2000	15.2	0.4	26.6	14.9	0.4	26.2	20.5	0.6	34.4
2001	14.7	0.3	26.0	14.3	0.3	25.4	20.5	0.6	34.5
2002	14.5	0.3	25.6	14.1	0.3	24.9	20.3	0.6	34.1
2003	14.2	0.3	25.2	13.8	0.3	24.6	20.2	0.5	34.0
2004	13.7	0.3	24.4	13.4	0.3	23.8	19.1	0.5	32.3
2005	13.5	0.3	24.0	13.1	0.3	23.3	19.3	0.5	32.8
1975-2005	17.1	0.3	30.0	16.9	0.3	29.8	20.6	0.6	35.0

^a US Mortality Files, National Center for Health Statistics, Centers for Disease Control and Prevention. Rates are per 100,000 and are age-adjusted to the 2000 US Std Population (19 age groups - Census P25-1130).

- Statistic not shown. Rate based on less than 16 cases for the time interval.

Table IV-5
FEMALE BREAST CANCER (Invasive)

AGE-ADJUSTED SEER INCIDENCE^a RATES BY YEAR, RACE AND AGE

	<u>All Races, Females</u>			<u>White Females</u>			<u>Black Females</u>		
	<u>All</u>	<u><50</u>	<u>50+</u>	<u>All</u>	<u><50</u>	<u>50+</u>	<u>All</u>	<u><50</u>	<u>50+</u>
<u>SEER INCIDENCE RATES</u>									
<u>YEAR OF DIAGNOSIS:</u>									
1975	105.1	40.6	273.9	107.4	40.7	281.9	93.7	42.6	227.5
1976	101.9	40.1	263.9	104.8	40.9	272.3	85.3	37.8	209.8
1977	100.8	39.1	262.4	103.4	39.4	271.0	87.0	37.6	216.4
1978	100.6	38.8	262.3	103.6	39.3	272.0	86.1	40.2	206.1
1979	102.1	38.0	270.0	104.7	38.6	278.0	86.8	37.7	215.3
1980	102.2	37.7	270.9	105.1	38.3	280.0	89.2	37.4	224.9
1981	106.3	39.2	282.0	109.9	40.1	292.6	94.2	38.9	239.3
1982	106.4	40.5	279.0	110.0	41.3	289.8	93.7	38.1	239.2
1983	111.1	40.3	296.7	114.5	40.9	307.2	103.4	41.2	266.0
1984	115.9	42.3	308.6	119.9	43.1	321.0	102.2	44.8	252.5
1985	124.2	44.3	333.2	127.9	44.6	346.0	111.5	45.4	284.4
1986	126.8	44.4	342.4	130.4	45.3	353.4	115.0	45.5	296.8
1987	134.4	45.5	367.3	140.3	46.5	385.7	109.3	43.1	282.7
1988	131.2	44.0	359.7	136.3	45.1	375.4	118.6	42.9	316.6
1989	127.1	43.4	346.4	132.3	44.4	362.3	104.8	42.2	268.9
1990	131.7	45.6	357.4	136.2	45.4	374.1	118.1	48.7	299.7
1991	133.7	47.1	360.3	138.7	47.1	378.6	117.4	50.9	291.4
1992	131.9	43.4	363.6	135.7	43.6	376.8	123.6	46.9	324.4
1993	129.1	42.8	355.1	133.1	43.3	368.4	119.5	45.2	314.2
1994	130.8	42.3	362.6	135.6	42.7	379.1	122.1	47.2	318.2
1995	132.4	43.1	366.3	137.4	43.7	382.9	123.8	45.4	329.0
1996	133.4	43.4	369.1	137.9	43.9	384.3	123.2	43.8	331.1
1997	137.6	43.4	384.2	142.5	44.0	400.3	124.2	44.0	334.0
1998	141.1	45.4	391.6	146.5	45.7	410.5	122.6	46.1	323.0
1999	140.9	43.6	395.8	146.6	44.9	412.9	124.9	43.4	338.6
2000	136.0	43.3	378.8	142.6	43.8	401.2	116.3	44.1	305.5
2001	137.7	43.4	384.6	143.9	44.3	404.7	113.8	39.1	309.5
2002	134.4	42.2	375.6	140.0	43.0	394.1	120.4	40.1	330.8
2003	125.2	42.6	341.4	129.9	43.4	356.3	121.4	42.3	328.4
2004	125.7	43.9	340.0	129.8	43.9	354.6	120.0	45.1	316.0
2005	123.7	42.8	335.5	128.6	43.4	351.5	113.3	43.1	297.0
1975-2005	124.6	42.8	338.7	128.6	43.4	351.9	112.2	43.4	292.2

^a SEER 9 areas (San Francisco, Connecticut, Detroit, Hawaii, Iowa, New Mexico, Seattle, Utah, and Atlanta). Rates are per 100,000 and are age-adjusted to the 2000 US Std Population (19 age groups - Census P25-1130).
 - Statistic not shown. Rate based on less than 16 cases for the time interval.

Table IV-6
 FEMALE BREAST CANCER (Invasive)

AGE-ADJUSTED U.S. DEATH^a RATES BY YEAR, RACE AND AGE

	All Races, Females			White Females			Black Females		
	All	<50	50+	All	<50	50+	All	<50	50+
<u>U.S. DEATH RATES</u>									
YEAR OF DEATH:									
1975	31.4	9.1	89.9	31.8	9.0	91.4	29.5	10.7	78.8
1976	31.8	8.7	92.2	32.2	8.6	93.8	30.5	10.2	83.5
1977	32.5	8.9	94.3	32.7	8.7	95.3	32.8	10.5	91.1
1978	31.7	8.7	92.1	31.9	8.5	93.3	32.1	11.4	86.5
1979	31.2	8.6	90.5	31.5	8.3	92.1	30.8	11.4	81.8
1980	31.7	8.6	92.2	31.9	8.4	93.6	31.7	10.8	86.3
1981	31.9	8.5	93.3	32.1	8.2	94.8	32.6	11.5	87.7
1982	32.2	8.4	94.4	32.3	8.2	95.5	33.7	11.2	92.8
1983	32.1	8.2	94.7	32.2	7.9	95.8	33.5	11.2	92.1
1984	32.9	8.6	96.6	32.9	8.2	97.5	35.9	12.5	97.2
1985	33.0	8.6	96.9	33.1	8.3	98.1	34.9	12.0	94.6
1986	32.9	8.6	96.3	32.9	8.3	97.5	35.4	12.9	94.6
1987	32.7	8.4	96.1	32.6	8.0	96.9	36.7	12.9	99.0
1988	33.2	8.4	98.2	33.1	8.0	98.8	37.8	12.7	103.4
1989	33.2	8.4	98.2	33.2	8.1	99.2	36.6	12.4	100.0
1990	33.1	8.3	98.1	33.0	8.0	98.5	38.0	12.0	106.1
1991	32.7	8.2	96.9	32.4	7.7	97.2	38.3	12.3	106.3
1992	31.6	7.8	94.2	31.4	7.4	94.5	37.1	12.0	102.7
1993	31.4	7.4	94.2	31.1	7.0	94.2	38.0	11.7	107.1
1994	30.9	7.4	92.6	30.6	6.9	92.5	37.7	11.7	105.9
1995	30.6	7.3	91.5	30.1	6.8	91.1	38.2	11.7	107.5
1996	29.5	6.9	88.5	29.0	6.4	88.3	37.1	11.7	103.6
1997	28.2	6.7	84.5	27.6	6.2	83.6	37.4	11.0	106.6
1998	27.5	6.3	83.1	27.0	5.8	82.5	35.5	10.6	100.7
1999	26.6	5.7	81.2	26.0	5.2	80.4	35.2	10.3	100.5
2000	26.6	5.9	81.0	26.2	5.4	80.6	34.4	9.9	98.3
2001	26.0	5.9	78.6	25.4	5.4	77.9	34.5	9.9	99.1
2002	25.6	5.6	77.7	24.9	5.1	77.0	34.1	10.0	97.2
2003	25.2	5.6	76.5	24.6	5.1	75.6	34.0	9.7	97.9
2004	24.4	5.2	74.6	23.8	4.6	74.0	32.3	9.3	92.5
2005	24.0	5.2	73.3	23.3	4.6	72.4	32.8	9.5	93.8
1975-2005	30.0	7.3	89.3	29.8	6.9	89.7	35.0	11.1	97.5

^a US Mortality Files, National Center for Health Statistics, Centers for Disease Control and Prevention. Rates are per 100,000 and are age-adjusted to the 2000 US Std Population (19 age groups - Census P25-1130).

- Statistic not shown. Rate based on less than 16 cases for the time interval.

Table IV-7
 FEMALE BREAST CANCER (*In Situ*)

AGE ADJUSTED SEER INCIDENCE^a RATES BY YEAR, RACE AND AGE

	All Races, Females			White Females			Black Females		
	All	<50	50+	All	<50	50+	All	<50	50+
<u>SEER INCIDENCE RATES</u>									
YEAR OF DIAGNOSIS:									
1975	5.8	3.8	11.2	5.9	3.8	11.3	3.9	-	8.3
1976	5.3	2.7	12.0	5.4	2.9	11.8	3.3	-	9.4
1977	4.3	2.6	8.7	4.3	2.6	8.9	3.0	-	-
1978	4.4	2.4	9.7	4.6	2.5	9.9	3.3	-	-
1979	4.6	2.8	9.2	4.7	2.9	9.4	4.8	-	9.6
1980	4.8	3.0	9.7	5.0	3.1	10.2	3.7	-	-
1981	5.0	2.6	11.0	4.9	2.5	11.3	4.1	-	8.7
1982	5.3	2.7	12.0	5.3	2.7	12.2	5.6	2.7	12.9
1983	6.1	3.0	14.1	6.2	3.0	14.6	5.4	-	13.2
1984	8.6	4.8	18.7	9.2	5.2	19.6	6.3	2.4	16.8
1985	11.5	5.9	26.2	12.1	6.3	27.4	8.2	3.5	20.6
1986	13.6	6.8	31.5	14.3	7.2	32.7	9.3	5.1	20.3
1987	17.4	7.8	42.3	18.2	8.2	44.3	12.2	5.5	29.7
1988	17.6	8.2	42.1	18.1	8.5	43.2	16.1	7.4	38.9
1989	16.5	7.0	41.4	17.1	7.3	42.7	14.5	5.5	38.1
1990	19.1	8.4	47.3	19.9	8.7	49.2	15.1	5.5	40.0
1991	19.8	8.8	48.6	20.4	8.9	50.8	15.3	7.3	36.3
1992	21.4	9.0	53.9	22.2	9.2	56.0	19.1	6.8	51.2
1993	20.7	8.4	53.0	21.3	8.8	54.3	16.5	6.1	43.9
1994	22.3	8.8	57.8	22.9	9.1	59.2	20.1	7.5	53.3
1995	24.7	9.6	64.1	25.1	10.0	64.5	22.6	6.4	65.2
1996	25.4	9.8	66.0	25.9	9.8	68.1	22.5	7.8	61.0
1997	28.3	11.0	73.5	28.9	11.2	75.3	28.0	11.4	71.4
1998	32.7	12.0	87.2	33.7	12.3	89.8	30.3	10.8	81.5
1999	32.7	12.0	87.1	33.2	12.2	88.0	29.6	10.4	79.8
2000	32.8	11.7	87.8	33.8	12.5	89.6	29.4	8.0	85.3
2001	33.5	11.5	91.2	34.1	11.9	92.0	31.5	8.9	90.9
2002	33.8	11.8	91.5	34.3	12.1	92.2	28.4	8.6	80.2
2003	32.1	11.8	85.2	33.0	12.3	87.3	29.4	9.2	82.3
2004	32.7	12.6	85.4	33.4	12.8	87.4	30.0	9.7	83.3
2005	32.0	12.1	84.1	32.9	12.6	86.0	31.0	9.6	87.1
1975-2005	20.1	8.5	50.6	20.2	8.6	50.7	18.6	6.9	49.3

^a SEER 9 areas (San Francisco, Connecticut, Detroit, Hawaii, Iowa, New Mexico, Seattle, Utah, and Atlanta). Rates are per 100,000 and are age-adjusted to the 2000 US Std Population (19 age groups - Census P25-1130).
 - Statistic not shown. Rate based on less than 16 cases for the time interval.

Table IV-8
BREAST CANCER (Invasive)

SEER INCIDENCE^a AND U.S. DEATH^b RATES, AGE-ADJUSTED AND AGE-SPECIFIC RATES, BY RACE AND SEX

	All Races			Whites			Blacks		
	Total	Males	Females	Total	Males	Females	Total	Males	Females
<u>SEER INCIDENCE</u>									
<u>AGE AT DIAGNOSIS</u>									
AGE-ADJUSTED RATES, 2001-2005									
All ages	68.5	1.2	126.1	70.4	1.2	130.6	67.4	1.6	117.5
Under 65	43.1	0.5	84.0	43.6	0.4	86.1	44.1	0.8	81.1
65 and over	244.1	6.0	417.2	255.0	6.2	438.4	228.7	6.9	369.3
All ages(IARC world std) ^c	48.4	0.7	91.1	49.7	0.7	94.3	48.0	1.1	85.3
AGE-SPECIFIC RATES, 2001-2005									
<1	-	-	-	-	-	-	-	-	-
1-4	-	-	-	-	-	-	-	-	-
5-9	-	-	-	-	-	-	-	-	-
10-14	-	-	-	-	-	-	-	-	-
15-19	0.1	-	0.2	-	-	-	-	-	-
20-24	0.7	-	1.4	0.6	-	1.3	0.9	-	1.9
25-29	3.8	-	7.8	3.7	-	7.6	5.4	-	10.2
30-34	12.9	-	26.1	12.6	-	25.8	16.4	-	31.3
35-39	29.3	0.1	58.9	28.6	-	58.4	33.8	-	64.3
40-44	59.1	0.4	117.6	59.0	0.3	118.9	62.1	-	117.4
45-49	94.2	0.8	185.3	94.7	0.8	188.6	95.8	1.3	178.9
50-54	120.3	1.1	234.4	122.4	1.1	241.4	121.5	1.5	223.4
55-59	155.4	2.1	299.7	158.7	1.9	309.5	156.8	4.0	283.6
60-64	189.7	3.3	359.9	196.5	3.3	376.5	179.9	5.9	318.8
65-69	217.8	4.3	402.3	229.1	4.6	427.4	199.7	5.8	347.5
70-74	237.7	5.3	423.9	247.9	5.5	446.1	224.6	6.7	377.0
75-79	267.2	6.0	453.1	280.0	6.2	476.9	245.8	8.1	393.0
80-84	271.1	7.6	435.9	282.0	7.7	453.5	252.3	-	386.2
85+	244.4	8.9	352.8	252.4	9.6	362.5	244.5	-	341.1
<u>U.S. MORTALITY</u>									
<u>AGE AT DEATH</u>									
AGE-ADJUSTED RATES, 2001-2005									
All ages	14.1	0.3	25.0	13.7	0.3	24.4	19.9	0.5	33.5
Under 65	6.6	0.1	12.8	6.2	0.1	12.1	11.0	0.2	20.2
65 and over	66.0	1.8	109.1	66.0	1.7	109.7	80.9	3.0	125.9
All ages(IARC world std) ^c	8.9	0.2	16.4	8.6	0.2	15.8	13.2	0.3	22.9
AGE-SPECIFIC RATES, 2001-2005									
<1	-	-	-	-	-	-	-	-	-
1-4	-	-	-	-	-	-	-	-	-
5-9	-	-	-	-	-	-	-	-	-
10-14	-	-	-	-	-	-	-	-	-
15-19	-	-	-	-	-	-	-	-	-
20-24	0.1	-	0.1	0.0	-	0.1	0.1	-	0.2
25-29	0.4	-	0.7	0.3	-	0.6	0.9	-	1.7
30-34	1.6	-	3.3	1.4	-	2.9	3.5	-	6.6
35-39	4.1	0.0	8.2	3.6	-	7.3	7.9	-	14.9
40-44	7.7	0.1	15.3	6.9	0.0	13.8	14.3	-	26.7
45-49	12.5	0.1	24.5	11.3	0.1	22.4	22.5	0.3	41.8
50-54	19.1	0.3	37.2	17.8	0.3	34.9	31.9	0.6	58.5
55-59	26.3	0.4	50.6	25.0	0.4	48.6	42.2	0.7	76.3
60-64	33.5	0.7	63.4	32.6	0.6	62.2	47.8	1.4	84.0
65-69	40.4	1.0	74.7	39.9	0.9	74.4	54.3	2.0	93.2
70-74	51.4	1.4	91.4	51.2	1.4	91.9	65.2	2.6	107.5
75-79	65.9	1.9	111.5	66.2	1.8	112.7	78.7	3.3	123.7
80-84	86.0	2.5	137.0	86.3	2.5	137.9	102.2	3.0	153.9
85+	129.7	3.3	185.3	130.3	3.2	186.2	150.6	5.6	207.2

^a SEER 17 areas. Rates are per 100,000 and are age-adjusted to the 2000 US Std Population (19 age groups - Census P25-1130), unless noted.

^b US Mortality Files, National Center for Health Statistics, Centers for Disease Control and Prevention. Rates are per 100,000 and are age-adjusted to the 2000 US Std Population (19 age groups - Census P25-1130), unless noted.

^c Rates are per 100,000 and are age-adjusted to the IARC world standard population.

- Statistic not shown. Rate based on less than 16 cases for the time interval.

Table IV-9
 FEMALE BREAST CANCER (*In Situ*)

SEER INCIDENCE^a RATES, AGE-ADJUSTED AND AGE-SPECIFIC RATES, BY RACE

	All Races, Females	White Females	Black Females
<u>AGE-ADJUSTED RATES, 2001-2005</u>			
AGE AT DIAGNOSIS:			
All ages	29.6	30.3	26.1
Under 65	22.0	22.7	18.0
65 and over	81.6	83.3	81.9
All ages(IARC world std) ^b	22.3	22.9	19.4
<u>AGE-SPECIFIC RATES, 2001-2005</u>			
AGE AT DIAGNOSIS:			
<1	-	-	-
1-4	-	-	-
5-9	-	-	-
10-14	-	-	-
15-19	-	-	-
20-24	0.2	-	-
25-29	0.8	0.7	1.0
30-34	2.5	2.4	2.7
35-39	9.9	10.2	8.7
40-44	34.1	35.1	23.5
45-49	54.8	56.9	40.6
50-54	67.1	68.7	53.8
55-59	80.0	82.0	72.5
60-64	87.6	90.1	76.8
65-69	96.7	99.1	94.9
70-74	91.8	93.9	96.3
75-79	87.4	89.1	88.9
80-84	66.7	68.2	59.0
85+	34.6	34.4	37.6

^a SEER 17 areas. Rates are per 100,000 and are age-adjusted to the 2000 US Std Population (19 age groups - Census P25-1130), unless noted.

^b Rates are per 100,000 and are age-adjusted to the IARC world standard population.

- Statistic not shown. Rate based on less than 16 cases for the time interval.

Table IV-10
FEMALE BREAST CANCER (Invasive)

SURVIVAL RATES, BY RACE, DIAGNOSIS YEAR, STAGE AND AGE

	All Races, Females			White Females			Black Females		
	All	<50	50+	All	<50	50+	All	<50	50+
<u>5-YR RELATIVE SURVIVAL RATES</u>									
YEAR OF DIAGNOSIS:									
1960-1963 ^a	-	-	-	63	-	-	46	-	-
1970-1973 ^a	-	-	-	68	-	-	51	-	-
1975-1977 ^b	75.1	76.7	74.6	75.9	77.9	75.2	62.3	62.6	62.2
1978-1980 ^b	74.9	75.6	74.7	75.6	76.2	75.4	63.9	67.1	62.0
1981-1983 ^b	76.7	77.5	76.5	77.7	78.7	77.4	64.1	65.3	63.4
1984-1986 ^b	79.3	77.9	79.8	80.4	79.7	80.7	65.2	64.0	65.9
1987-1989 ^b	84.2	81.5	85.2	85.3	82.9	86.2	71.3	69.6	72.2
1990-1992 ^b	85.5	83.4	86.3	86.7	85.1	87.3	71.8	70.3	72.8
1993-1995 ^b	86.6	84.3	87.5	88.0	86.3	88.6	72.8	70.0	74.5
1996-2004 ^b	89.3 ^e	87.6 ^e	90.0 ^e	90.5 ^e	89.3 ^e	91.0 ^e	77.8 ^e	75.8 ^e	79.1 ^e
<u>5-YR PERIOD SURVIVAL RATES^{cd}</u>									
YEAR OF DIAGNOSIS:									
1996-2004	89.3	87.4	89.9	90.4	88.9	91.0	77.7	76.6	78.5
<u>STAGE DISTRIBUTION (%) 1996-2004^c</u>									
All Stages									
Number of cases	295,133	73,948	221,185	245,831	57,329	188,502	26,263	8,732	17,531
Percent	100%	100%	100%	100%	100%	100%	100%	100%	100%
Localized	61	54	63	62	54	64	51	46	53
Regional	31	39	28	31	39	28	37	43	33
Distant	6	5	6	6	5	6	10	9	10
Unstaged	2	2	2	2	1	2	3	2	3
<u>5-YR RELATIVE SURVIVAL RATES, 1996-2004^c</u>									
AGE AT DIAGNOSIS:									
<45	85.2	-	-	86.9	-	-	73.3	-	-
45-54	89.0	-	-	90.4	-	-	77.7	-	-
55-64	89.8	-	-	90.9	-	-	78.2	-	-
65-74	90.4	-	-	91.2	-	-	79.8	-	-
75+	88.5	-	-	89.2	-	-	77.5	-	-
Under 65	88.4	-	-	89.8	-	-	76.5	-	-
65 and over	89.6	-	-	90.4	-	-	78.9	-	-
STAGE:									
All Stages	88.7	86.9	89.4	89.9	88.4	90.4	77.1	75.2	78.2
Localized	98.1	95.5	98.9	98.6	96.1	99.4	93.1	90.4	94.5
Regional	83.8	83.1	84.2	85.2	84.9	85.4	72.3	71.5	72.9
Distant	27.1	33.9	24.8	28.8	38.0	26.0	17.1	18.5	16.4
Unstaged	56.9	70.7	52.6	57.7	73.9	53.2	45.8	51.2	43.2
<i>IN SITU</i> ^h	100.0	100.0	100.0	100.0	100.0	100.0	100.0	99.3	100.0

^a Rates are based on End Results data from a series of hospital registries and one population-based registry.

^b Rates are from the SEER 9 areas (San Francisco, Connecticut, Detroit, Hawaii, Iowa, New Mexico, Seattle, Utah, Atlanta). Rates are based on follow-up of patients into 2005.

^c Rates are from the SEER 17 areas (San Francisco, Connecticut, Detroit, Hawaii, Iowa, New Mexico, Seattle, Utah, Atlanta, San Jose-Monterey, Los Angeles, Alaska Native Registry, Rural Georgia, California excluding SF/SJM/LA, Kentucky, Louisiana and New Jersey). California excluding SF/SJM/LA, Kentucky, Louisiana, and New Jersey contribute cases for diagnosis years 2000-2004. The remaining 13 SEER Areas contribute cases for the entire period 1996-2004. Rates are based on follow-up of patients into 2005.

^d Period survival provides a more up-to-date estimate of survival by piecing together the most recent conditional survival estimates from several cohorts. It is computed here using three calendar year blocks (2002-2004: 0-1 year survival), (2001-2003: 1-2 year survival), (2000-2002: 2-3 year survival), (1999-2001: 3-4 year survival), (1998-2000: 4-5 years survival).

^e The difference in rates between 1975-1977 and 1996-2004 is statistically significant ($p < .05$).

^f The standard error of the survival rate is between 5 and 10 percentage points.

^g The standard error of the survival rate is greater than 10 percentage points.

^h *In situ* cases are not included in the All Stages group.

- Statistic could not be calculated due to fewer than 16 cases during the time period.

Table IV-11
FEMALE BREAST CANCER (Invasive)

SURVIVAL RATES^a

By Year of Diagnosis

All Races, Females

Year of Diagnosis

	1975- 1979	1980- 1984	1985	1986	1987	1988	1989	1990	1991	1992	1993	1994	1995	1996	1997	1998	1999	2000	2001	2002	2003	2004
Relative Survival Rates (SEER ^b)																						
1-year	94.7	95.5	95.9	96.3	96.9	96.8	97.0	97.0	97.4	97.4	97.2	97.6	97.3	97.2	97.6	97.7	97.6	97.7	97.5	97.7	98.0	97.9
2-year	88.9	90.5	91.2	91.7	93.3	93.4	93.3	93.4	93.9	94.5	94.1	94.4	94.2	94.0	94.6	95.1	95.3	95.6	95.3	95.8	95.8	
3-year	83.4	85.1	86.3	87.0	89.3	90.1	90.0	89.8	90.3	91.2	91.0	91.2	91.5	91.2	92.2	93.1	93.3	93.7	93.0	93.9		
4-year	78.7	80.7	82.3	83.5	86.1	87.3	87.1	87.0	87.8	88.3	88.3	88.8	89.0	89.2	90.1	91.3	91.4	91.9	91.3			
5-year	74.9	76.9	78.8	80.5	83.4	84.7	84.6	84.8	85.5	86.0	86.0	86.9	86.9	87.0	88.6	89.7	89.8	90.5				
6-year	71.8	73.9	76.3	78.2	80.7	82.5	82.3	82.7	83.6	84.3	84.0	85.3	85.6	85.3	87.2	88.5	88.2					
7-year	69.1	71.1	74.2	75.9	78.5	80.7	80.6	80.8	81.9	82.6	82.3	83.8	84.0	84.2	86.0	87.3						
8-year	66.9	68.9	72.3	74.4	77.1	79.3	79.2	79.5	80.3	81.7	80.8	83.0	82.7	82.7	85.1							
9-year	64.7	66.9	70.4	72.8	75.3	77.6	77.9	78.1	79.0	80.8	79.8	81.8	81.5	81.8								
10-year	62.9	65.0	68.7	71.2	74.0	76.6	76.8	77.0	77.9	79.8	78.8	80.6	80.6									
11-year	61.3	63.2	67.4	70.0	72.3	75.4	75.9	76.0	77.2	78.7	77.4	79.2										
12-year	59.7	62.0	66.2	68.7	71.1	74.3	74.4	75.0	75.9	77.7	76.9											
13-year	58.6	61.0	65.4	67.6	69.9	73.3	73.5	74.0	75.1	76.7												
14-year	57.6	59.7	64.6	66.7	68.7	72.6	72.6	72.9	74.3													
15-year	56.6	58.9	63.7	65.3	67.9	71.8	71.7	71.6														
16-year	55.7	57.9	62.6	64.5	66.9	71.2	71.3															
17-year	54.8	57.0	61.4	63.9	66.4	70.4																
18-year	54.1	56.2	60.4	63.3	65.9																	
19-year	53.4	55.7	60.2	62.4																		
20-year	52.7	55.0	60.0																			

^a Survival rates are relative rates expressed as percents.

^b Rates are from the SEER 9 areas (San Francisco, Connecticut, Detroit, Hawaii, Iowa, New Mexico, Seattle, Utah, and Atlanta).

Table IV-12
FEMALE BREAST CANCER (Under 50) (Invasive)

SURVIVAL RATES^a

By Year of Diagnosis

All Races, Females

Year of Diagnosis

	1975- 1979	1980- 1984	1985	1986	1987	1988	1989	1990	1991	1992	1993	1994	1995	1996	1997	1998	1999	2000	2001	2002	2003	2004
Relative Survival Rates (SEER ^b)																						
1-year	96.8	97.6	97.6	98.0	98.0	98.4	98.1	97.6	98.5	98.4	98.0	98.4	98.0	97.8	98.1	98.4	98.6	98.5	98.4	98.6	98.9	98.5
2-year	91.0	91.5	91.9	92.3	92.6	93.8	93.1	93.1	93.9	94.6	94.3	93.6	93.7	93.8	94.8	95.2	95.1	95.7	94.9	95.8	96.0	
3-year	84.7	85.7	85.8	86.1	87.3	89.2	88.7	88.5	90.1	90.8	90.3	89.3	90.0	90.7	91.8	92.2	92.2	93.1	91.5	93.3		
4-year	80.1	81.1	81.3	82.1	83.2	85.6	84.9	85.0	86.9	86.5	87.2	86.2	86.7	88.2	88.8	89.5	89.9	90.5	89.1			
5-year	76.2	77.2	77.9	78.5	79.9	82.5	82.1	82.4	83.9	83.8	84.7	84.0	84.1	85.5	86.8	87.3	88.0	88.9				
6-year	73.4	74.2	75.7	75.9	77.5	80.4	79.7	80.1	81.8	81.7	83.0	82.0	82.3	83.2	84.7	85.4	85.9					
7-year	70.9	71.6	73.5	73.2	75.2	78.4	78.1	78.5	79.5	80.2	81.2	80.2	80.2	81.6	83.2	83.6						
8-year	69.0	69.5	71.8	71.5	73.6	76.7	76.6	76.6	78.1	78.6	79.6	78.9	78.7	79.9	81.4							
9-year	67.0	67.7	69.9	70.4	71.8	75.3	75.0	75.4	77.2	77.6	78.5	77.4	77.5	78.9								
10-year	65.5	66.3	68.7	69.3	70.4	74.0	74.2	74.3	76.3	76.7	77.3	76.4	76.2									
11-year	64.2	65.0	67.9	68.3	68.9	72.9	73.2	73.3	75.2	75.7	76.6	75.5										
12-year	62.8	64.0	66.7	67.1	67.5	72.4	72.0	72.4	73.8	75.0	75.9											
13-year	61.7	62.9	65.7	66.1	66.6	71.3	71.0	71.3	73.1	73.9												
14-year	60.9	61.8	65.1	65.3	65.7	70.8	70.2	70.7	72.3													
15-year	60.2	61.0	64.2	64.5	65.0	70.0	69.5	70.0	69.5	70.0												
16-year	59.4	60.3	63.4	63.9	64.4	69.3	68.6															
17-year	58.9	59.6	62.4	63.3	64.0	68.8																
18-year	58.3	59.0	61.6	62.7	63.4																	
19-year	57.7	58.5	61.1	62.3																		
20-year	56.9	57.9	60.8																			

^a Survival rates are relative rates expressed as percents.

^b Rates are from the SEER 9 areas (San Francisco, Connecticut, Detroit, Hawaii, Iowa, New Mexico, Seattle, Utah, and Atlanta).

Table IV-13
FEMALE BREAST CANCER (50 and Over) (Invasive)

SURVIVAL RATES^a

By Year of Diagnosis

All Races, Females

Year of Diagnosis

	1975- 1979	1980- 1984	1985	1986	1987	1988	1989	1990	1991	1992	1993	1994	1995	1996	1997	1998	1999	2000	2001	2002	2003	2004
Relative Survival Rates (SEER ^b)																						
1-year	94.0	94.9	95.3	95.8	96.5	96.4	96.6	96.8	97.0	97.1	96.9	97.3	97.1	97.0	97.4	97.4	97.3	97.5	97.3	97.4	97.7	97.7
2-year	88.3	90.1	91.0	91.5	93.5	93.3	93.4	93.5	93.9	94.4	94.1	94.7	94.3	94.0	94.6	95.1	95.4	95.6	95.5	95.8	95.7	
3-year	83.0	84.9	86.5	87.3	89.9	90.4	90.4	90.3	90.4	91.3	91.3	91.9	92.1	91.3	92.4	93.5	93.7	93.9	93.6	94.1		
4-year	78.2	80.6	82.6	84.0	87.0	87.9	87.9	87.8	88.1	89.0	88.8	89.8	89.9	89.6	90.6	91.9	92.0	92.4	92.0			
5-year	74.4	76.8	79.1	81.2	84.6	85.6	85.6	85.8	86.1	86.9	86.5	87.9	88.0	87.6	89.2	90.6	90.4	91.2				
6-year	71.2	73.8	76.6	79.1	81.9	83.3	83.3	83.7	84.4	85.3	84.5	86.6	86.9	86.1	88.1	89.8	89.1					
7-year	68.4	71.0	74.4	76.9	79.7	81.6	81.7	81.8	82.9	83.6	82.8	85.3	85.5	85.3	87.2	88.8						
8-year	66.1	68.6	72.5	75.6	78.4	80.3	80.4	80.7	81.3	83.1	81.3	84.8	84.5	84.0	86.7							
9-year	63.8	66.6	70.6	73.8	76.7	78.5	79.2	79.4	79.8	82.2	80.4	83.7	83.3	83.1								
10-year	61.9	64.5	68.8	72.0	75.5	77.8	77.9	78.3	78.8	81.2	79.5	82.6	82.8									
11-year	60.1	62.5	67.1	70.8	73.8	76.6	77.1	77.3	78.2	80.3	77.9	81.1										
12-year	58.4	61.3	66.0	69.4	72.8	75.3	75.6	76.4	77.1	79.1	77.5											
13-year	57.2	60.2	65.3	68.3	71.5	74.3	74.9	75.5	76.3	78.3												
14-year	56.1	58.8	64.5	67.5	70.2	73.6	74.0	74.2	75.6													
15-year	54.8	58.0	63.5	65.9	69.5	72.8	73.1	72.8														
16-year	53.8	56.7	62.3	64.9	68.3	72.3	73.1															
17-year	52.7	55.7	60.9	64.4	67.9	71.5																
18-year	51.8	54.9	59.8	63.9	67.6																	
19-year	50.9	54.2	59.6	62.7																		
20-year	50.2	53.3	59.6																			

^a Survival rates are relative rates expressed as percents.

^b Rates are from the SEER 9 areas (San Francisco, Connecticut, Detroit, Hawaii, Iowa, New Mexico, Seattle, Utah, and Atlanta).

Table IV-14
 FEMALE BREAST CANCER (Invasive)

Risk of Being Diagnosed With Cancer in 10, 20 and 30 Years, Lifetime Risk of Being Diagnosed with Cancer, and
 Lifetime Risk of Dying from Cancer Given Cancer Free At Current Age
 2003-2005 By Race/Ethnicity

Race/ Ethnicity	Current Age	Risk of Being Diagnosed with Cancer			Risk of Dying from Cancer	
		+10 yrs Percent (95% C.I.)	+20 yrs Percent (95% C.I.)	+30 yrs Percent (95% C.I.)	Eventually Percent (95% C.I.)	Eventually Percent (95% C.I.)
All Races	0	0.00 (0.00, 0.00)	0.00 (0.00, 0.00)	0.06 (0.05, 0.06)	12.03 (11.97, 12.10)	2.86 (2.85, 2.88)
	10	0.00 (0.00, 0.00)	0.06 (0.05, 0.06)	0.49 (0.48, 0.50)	12.17 (12.10, 12.23)	2.90 (2.88, 2.92)
	20	0.05 (0.05, 0.06)	0.49 (0.48, 0.50)	1.90 (1.88, 1.92)	12.20 (12.13, 12.26)	2.91 (2.89, 2.92)
	30	0.43 (0.43, 0.44)	1.85 (1.84, 1.87)	4.18 (4.15, 4.21)	12.21 (12.14, 12.28)	2.92 (2.90, 2.93)
	40	1.44 (1.42, 1.45)	3.79 (3.77, 3.82)	6.87 (6.83, 6.92)	11.92 (11.85, 11.99)	2.89 (2.87, 2.90)
	50	2.44 (2.41, 2.46)	5.62 (5.58, 5.66)	8.65 (8.60, 8.71)	10.84 (10.77, 10.91)	2.75 (2.74, 2.77)
	60	3.41 (3.37, 3.44)	6.65 (6.60, 6.70)	8.55 (8.49, 8.62)	8.99 (8.92, 9.06)	2.45 (2.43, 2.46)
	70	3.74 (3.70, 3.78)	5.94 (5.88, 5.99)	- (- , -)	6.44 (6.38, 6.50)	2.02 (2.01, 2.04)
80	3.03 (2.98, 3.07)	- (- , -)	- (- , -)	3.72 (3.67, 3.77)	1.54 (1.52, 1.56)	
White	0	0.00 (0.00, 0.00)	0.00 (0.00, 0.00)	0.06 (0.05, 0.06)	12.52 (12.44, 12.60)	2.85 (2.83, 2.87)
	10	0.00 (0.00, 0.00)	0.06 (0.05, 0.06)	0.48 (0.47, 0.50)	12.64 (12.56, 12.72)	2.88 (2.86, 2.90)
	20	0.05 (0.05, 0.06)	0.48 (0.47, 0.50)	1.92 (1.90, 1.94)	12.67 (12.59, 12.75)	2.89 (2.87, 2.91)
	30	0.43 (0.42, 0.44)	1.88 (1.85, 1.90)	4.28 (4.24, 4.31)	12.68 (12.61, 12.76)	2.90 (2.88, 2.92)
	40	1.46 (1.44, 1.48)	3.89 (3.86, 3.93)	7.13 (7.08, 7.19)	12.39 (12.32, 12.47)	2.87 (2.85, 2.89)
	50	2.51 (2.49, 2.54)	5.86 (5.81, 5.91)	9.05 (8.98, 9.11)	11.29 (11.22, 11.37)	2.75 (2.73, 2.77)
	60	3.58 (3.54, 3.62)	6.98 (6.92, 7.04)	8.95 (8.88, 9.02)	9.38 (9.30, 9.45)	2.46 (2.44, 2.48)
	70	3.93 (3.88, 3.98)	6.19 (6.13, 6.26)	- (- , -)	6.69 (6.63, 6.76)	2.04 (2.02, 2.05)
80	3.14 (3.09, 3.18)	- (- , -)	- (- , -)	3.82 (3.77, 3.88)	1.54 (1.52, 1.56)	
Black	0	0.00 (0.00, 0.00)	0.00 (0.00, 0.01)	0.07 (0.06, 0.08)	9.91 (9.73, 10.11)	3.22 (3.17, 3.27)
	10	0.00 (0.00, 0.01)	0.07 (0.06, 0.08)	0.54 (0.51, 0.57)	10.13 (9.94, 10.32)	3.30 (3.24, 3.35)
	20	0.07 (0.06, 0.08)	0.54 (0.51, 0.57)	1.90 (1.84, 1.95)	10.16 (9.96, 10.35)	3.31 (3.25, 3.36)
	30	0.48 (0.45, 0.50)	1.84 (1.79, 1.90)	3.97 (3.88, 4.06)	10.18 (9.99, 10.38)	3.32 (3.27, 3.37)
	40	1.40 (1.35, 1.44)	3.56 (3.48, 3.65)	6.10 (5.97, 6.23)	9.90 (9.71, 10.10)	3.27 (3.21, 3.32)
	50	2.28 (2.22, 2.36)	4.95 (4.83, 5.08)	7.34 (7.18, 7.51)	8.96 (8.77, 9.17)	3.05 (3.00, 3.11)
	60	2.96 (2.86, 3.07)	5.62 (5.46, 5.78)	7.04 (6.85, 7.23)	7.42 (7.22, 7.62)	2.62 (2.57, 2.68)
	70	3.24 (3.11, 3.38)	4.98 (4.80, 5.16)	- (- , -)	5.44 (5.25, 5.64)	2.14 (2.09, 2.20)
80	2.63 (2.48, 2.79)	- (- , -)	- (- , -)	3.34 (3.15, 3.54)	1.71 (1.65, 1.78)	

Devcan Version 7.0.0, April 2008, National Cancer Institute (<http://srab.cancer.gov/devcan/>).

Source: Incidence data are from the SEER 17 areas (San Francisco, Connecticut, Detroit, Hawaii, Iowa, New Mexico, Seattle, Utah, Atlanta, San Jose-Monterey, Los Angeles, Alaska Native Registry, Rural Georgia, California excluding SF/SJM/LA, Kentucky, Louisiana and New Jersey). Mortality data are from the NCHS public use data file for the total US.

- Statistic could not be calculated.

A percent or confidence interval value of 0.00 represents a value that is below 0.005.

Table IV-14 - continued
 FEMALE BREAST CANCER (Invasive)

Risk of Being Diagnosed With Cancer in 10, 20 and 30 Years, Lifetime Risk of Being Diagnosed with Cancer, and
 Lifetime Risk of Dying from Cancer Given Cancer Free At Current Age
 2003-2005 By Race/Ethnicity

Race/ Ethnicity	Current Age	Risk of Being Diagnosed with Cancer				Risk of Dying from Cancer	
		+10 yrs Percent (95% C.I.)	+20 yrs Percent (95% C.I.)	+30 yrs Percent (95% C.I.)	Eventually Percent (95% C.I.)	Eventually Percent (95% C.I.)	
Asian/ Pacific Islander	0	0.00 (0.00, 0.00)	0.00 (0.00, 0.01)	0.04 (0.04, 0.05)	9.13 (8.91, 9.37)	1.73 (1.62, 1.86)	
	10	0.00 (0.00, 0.00)	0.04 (0.04, 0.05)	0.43 (0.41, 0.46)	9.20 (8.98, 9.44)	1.74 (1.63, 1.88)	
	20	0.04 (0.04, 0.05)	0.43 (0.41, 0.46)	1.73 (1.67, 1.78)	9.22 (8.99, 9.46)	1.75 (1.63, 1.88)	
	30	0.39 (0.37, 0.42)	1.69 (1.63, 1.75)	3.56 (3.47, 3.65)	9.20 (8.98, 9.45)	1.75 (1.63, 1.88)	
	40	1.31 (1.26, 1.36)	3.19 (3.11, 3.28)	5.38 (5.25, 5.51)	8.88 (8.65, 9.12)	1.72 (1.61, 1.85)	
	50	1.93 (1.86, 2.00)	4.16 (4.04, 4.29)	6.17 (6.01, 6.34)	7.74 (7.52, 7.98)	1.61 (1.49, 1.74)	
	60	2.33 (2.24, 2.43)	4.42 (4.28, 4.58)	5.74 (5.55, 5.93)	6.06 (5.85, 6.30)	1.37 (1.26, 1.51)	
	70	2.27 (2.16, 2.39)	3.70 (3.53, 3.88)	- (- , -)	4.05 (3.85, 4.28)	1.07 (0.95, 1.21)	
	80	1.73 (1.59, 1.87)	- (- , -)	- (- , -)	2.15 (1.96, 2.38)	0.80 (0.67, 0.96)	
American Indian/ Alaska Native ^a	0	0.00 (0.00, 0.05)	0.00 (0.00, 0.05)	0.02 (0.01, 0.08)	7.17 (6.47, 8.11)	2.05 (1.81, 2.35)	
	10	0.00 (0.00, 0.02)	0.02 (0.01, 0.06)	0.29 (0.22, 0.39)	7.29 (6.57, 8.24)	2.08 (1.84, 2.39)	
	20	0.02 (0.01, 0.06)	0.29 (0.22, 0.39)	1.24 (1.07, 1.43)	7.33 (6.61, 8.28)	2.10 (1.85, 2.41)	
	30	0.27 (0.20, 0.36)	1.23 (1.06, 1.42)	2.83 (2.53, 3.15)	7.37 (6.65, 8.34)	2.11 (1.86, 2.42)	
	40	0.98 (0.83, 1.14)	2.61 (2.32, 2.92)	4.44 (3.99, 4.92)	7.25 (6.51, 8.22)	2.11 (1.86, 2.43)	
	50	1.70 (1.47, 1.96)	3.60 (3.18, 4.06)	5.38 (4.79, 6.04)	6.52 (5.78, 7.52)	2.06 (1.80, 2.39)	
	60	2.04 (1.70, 2.42)	3.95 (3.39, 4.58)	5.03 (4.33, 5.82)	5.17 (4.45, 6.19)	1.92 (1.65, 2.26)	
	70	2.23 (1.78, 2.77)	3.49 (2.83, 4.27)	- (- , -)	3.66 (2.96, 4.73)	1.73 (1.44, 2.11)	
	80	1.70 (1.16, 2.42)	- (- , -)	- (- , -)	1.93 (1.31, 3.13)	1.39 (1.08, 1.84)	
Hispanic ^b	0	0.00 (0.00, 0.00)	0.00 (0.00, 0.00)	0.05 (0.04, 0.05)	9.35 (9.14, 9.57)	2.08 (2.01, 2.16)	
	10	0.00 (0.00, 0.00)	0.05 (0.04, 0.05)	0.38 (0.37, 0.40)	9.44 (9.23, 9.66)	2.10 (2.03, 2.18)	
	20	0.05 (0.04, 0.05)	0.38 (0.37, 0.40)	1.48 (1.44, 1.52)	9.46 (9.25, 9.68)	2.11 (2.03, 2.18)	
	30	0.34 (0.32, 0.36)	1.44 (1.40, 1.48)	3.23 (3.16, 3.30)	9.45 (9.24, 9.67)	2.11 (2.04, 2.19)	
	40	1.11 (1.07, 1.14)	2.91 (2.84, 2.98)	5.20 (5.09, 5.32)	9.19 (8.98, 9.42)	2.08 (2.01, 2.16)	
	50	1.85 (1.79, 1.91)	4.20 (4.09, 4.31)	6.46 (6.31, 6.61)	8.29 (8.07, 8.51)	1.97 (1.90, 2.05)	
	60	2.47 (2.38, 2.56)	4.85 (4.71, 5.00)	6.28 (6.10, 6.47)	6.77 (6.56, 7.00)	1.74 (1.66, 1.82)	
	70	2.65 (2.54, 2.76)	4.24 (4.08, 4.42)	- (- , -)	4.79 (4.58, 5.01)	1.43 (1.35, 1.51)	
	80	2.04 (1.90, 2.19)	- (- , -)	- (- , -)	2.74 (2.53, 2.97)	1.12 (1.04, 1.22)	

Devcan Version 7.0.0, April 2008, National Cancer Institute (<http://srab.cancer.gov/devcan/>).

Source: Incidence data are from the SEER 17 areas (San Francisco, Connecticut, Detroit, Hawaii, Iowa, New Mexico, Seattle, Utah, Atlanta, San Jose-Monterey, Los Angeles, Alaska Native Registry, Rural Georgia, California excluding SF/SJM/LA, Kentucky, Louisiana and New Jersey). Mortality data are from the NCHS public use data file for the total US.

^a Underlying incidence and mortality data for American Indian/Alaska Native are based on the CHSDA (Contract Health Service Delivery Area) counties.

^b Hispanic is not mutually exclusive from whites, blacks, Asian/Pacific Islanders, and American Indians/Alaska Natives. Underlying incidence data for Hispanics are based on NHIA and exclude cases from the Alaska Native Registry and Kentucky. Underlying mortality data for Hispanics exclude deaths from Minnesota, New Hampshire and North Dakota.

- Statistic could not be calculated.

A percent or confidence interval value of 0.00 represents a value that is below 0.005.

Table IV-15
FEMALE BREAST CANCER (Invasive)

SEER INCIDENCE AND U.S. MORTALITY
AGE-ADJUSTED RATES AND TRENDS^a
 By Race/Ethnicity

<u>SEER Incidence</u>	Rate 2001-2005 ^b	Seer 13 Areas ^c	SEER 9 Areas ^d
	Rate per 100,000 persons	Trend 1996-2005	Trend 1996-2005
	Females	AAPC (%)	AAPC (%)
RACE/ETHNICITY	Females	Females	Females
All Races	126.1	-1.1*	-1.1*
White	130.6	-1.2*	-1.2*
White Hispanic ^e	91.9	0.0	-
White Non-Hispanic ^e	138.2	-1.1*	-
Black	117.5	-0.3	-0.5
Asian/Pacific Islander	89.6	0.0	-
Amer Ind/Alaska Nat ^f	75.0	-0.2	-
Hispanic ^e	90.1	0.1	-
<u>U.S. Mortality^g</u>	Rate 2001-2005	Trend 1996-2005 ^h	
	Rate per 100,000 persons	AAPC (%)	
RACE/ETHNICITY	Females	Females	
All Races	25.0	-2.2*	
White	24.4	-2.3*	
White Hispanic ^e	16.3	-2.0*	
White Non-Hispanic ^e	25.0	-2.1*	
Black	33.5	-1.3*	
Asian/Pacific Islander	12.6	-0.6*	
Amer Ind/Alaska Nat			
Total U.S.	14.3	-0.4	
CHSDA Counties	17.1	0.6	
Non-CHSDA Counties	10.7	-2.0	
Hispanic ^e	15.8	-1.9*	

The AAPC is the Average Annual Percent Change over the time interval. The AAPCs are calculated by the Joinpoint Regression Program Version 3.3, April 2008, National Cancer Institute.

- Statistic not shown. Rate based on less than 16 cases for the time interval. Trend based on less than 10 cases for at least one year within the time interval.

a Rates are age-adjusted to the 2000 US Std Population (19 age groups - Census P25-1130). Trends are based on rates age-adjusted to the 2000 US Std Population (19 age groups - Census P25-1130).

b Incidence data used in calculating the 2001-2005 rates are from the SEER 17 areas (San Francisco, Connecticut, Detroit, Hawaii, Iowa, New Mexico, Seattle, Utah, Atlanta, San Jose-Monterey, Los Angeles, Alaska Native Registry, Rural Georgia, California excluding SF/SJM/LA, Kentucky, Louisiana and New Jersey).

c The SEER 13 areas are San Francisco, Connecticut, Detroit, Hawaii, Iowa, New Mexico, Seattle, Utah, Atlanta, San Jose-Monterey, Los Angeles, Alaska Native Registry and Rural Georgia. The 1996-2005 AAPC trends are based on a Joinpoint analysis using diagnosis years 1992-2005.

d The SEER 9 areas are San Francisco, Connecticut, Detroit, Hawaii, Iowa, New Mexico, Seattle, Utah, and Atlanta. The 1996-2005 AAPC trends are based on a Joinpoint analysis using diagnosis years 1975-2005.

e Hispanic and Non-Hispanic are not mutually exclusive from whites, blacks, Asian/Pacific Islanders, and American Indians/Alaska Natives. Incidence data for Hispanics and Non-Hispanics are based on NHIA and exclude cases from the Alaska Native Registry and Kentucky. The 2001-2005 Hispanic and Non-Hispanic death rates exclude deaths from Minnesota, New Hampshire and North Dakota. The 1996-2005 Hispanic and Non-Hispanic mortality trends exclude deaths from Connecticut, Maine, Maryland, Minnesota, New Hampshire, New York, North Dakota, Oklahoma and Vermont.

f Incidence data for American Indian/Alaska Native are based on the CHSDA(Contract Health Service Delivery Area) counties.

g US Mortality Files, National Center for Health Statistics, CDC.

h The 1996-2005 mortality AAPCs are based on a Joinpoint analysis using years of death 1992-2005.

* The APC is significantly different from zero (p<.05).

Table IV-16
FEMALE BREAST CANCER (In Situ)

SEER INCIDENCE
AGE-ADJUSTED RATES AND TRENDS^a
 By Race/Ethnicity

<u>SEER Incidence</u>	Rate 2001-2005 ^b		Seer 13 Areas ^c		SEER 9 Areas ^d	
	Rate per 100,000 persons		Trend 1996-2005		Trend 1996-2005	
	Females		AAPC (%)		AAPC (%)	
RACE/ETHNICITY	Females		Females		Females	
All Races	29.6		2.1*		2.1*	
White	30.3		2.0*		2.1*	
White Hispanic ^e	19.0		4.1*		-	
White Non-Hispanic ^e	33.1		2.3*		-	
Black	26.1		2.6*		2.4*	
Asian/Pacific Islander	25.7		3.2*		-	
Amer Ind/Alaska Nat ^f	14.7		-		-	
Hispanic ^e	18.7		3.2*		-	

The AAPC is the Average Annual Percent Change over the time interval. The AAPCs are calculated by the Joinpoint Regression Program Version 3.3, April 2008, National Cancer Institute.

- Statistic not shown. Rate based on less than 16 cases for the time interval. Trend based on less than 10 cases for at least one year within the time interval.

^a Rates are age-adjusted to the 2000 US Std Population (19 age groups - Census P25-1130). Trends are based on rates age-adjusted to the 2000 US Std Population (19 age groups - Census P25-1130).

^b Incidence data used in calculating the 2001-2005 rates are from the SEER 17 areas (San Francisco, Connecticut, Detroit, Hawaii, Iowa, New Mexico, Seattle, Utah, Atlanta, San Jose-Monterey, Los Angeles, Alaska Native Registry, Rural Georgia, California excluding SF/SJM/LA, Kentucky, Louisiana and New Jersey).

^c The SEER 13 areas are San Francisco, Connecticut, Detroit, Hawaii, Iowa, New Mexico, Seattle, Utah, Atlanta, San Jose-Monterey, Los Angeles, Alaska Native Registry and Rural Georgia. The 1996-2005 AAPC trends are based on a Joinpoint analysis using diagnosis years 1992-2005.

^d The SEER 9 areas are San Francisco, Connecticut, Detroit, Hawaii, Iowa, New Mexico, Seattle, Utah, and Atlanta. The 1996-2005 AAPC trends are based on a Joinpoint analysis using diagnosis years 1975-2005.

^e Hispanic and Non-Hispanic are not mutually exclusive from whites, blacks, Asian/Pacific Islanders, and American Indians/Alaska Natives. Incidence data for Hispanics and Non-Hispanics are based on NHIA and exclude cases from the Alaska Native Registry and Kentucky.

^f Incidence data for American Indian/Alaska Native are based on the CHSDA(Contract Health Service Delivery Area) counties.

* The APC is significantly different from zero (p<.05).

Table IV-17
 FEMALE BREAST CANCER (Invasive)

AGE-ADJUSTED SEER INCIDENCE RATES^a
 By Registry, Race/Ethnicity and Age

	All Races			Whites			Blacks		
	All Ages	Ages <50	Ages 50+	All Ages	Ages <50	Ages 50+	All Ages	Ages <50	Ages 50+
<u>SEER INCIDENCE RATES^a, 2001-2005</u>									
REGISTRY									
Atlanta & Rural Georgia	122.8	42.0	334.4	128.8	42.1	355.7	115.4	42.9	305.3
Atlanta	123.6	41.8	337.8	129.6	41.9	359.1	116.6	42.8	309.8
Rural Georgia	111.8	47.5	280.0	115.6	47.9	292.7	105.1	46.7	258.0
California	124.7	39.9	346.7	131.0	40.3	368.5	118.9	41.4	321.7
Greater Bay Area	127.5	42.4	350.2	139.4	42.9	392.0	118.5	43.2	315.6
San Francisco-Oakland	130.2	43.5	357.3	143.4	44.5	402.4	122.5	44.2	327.5
San Jose-Monterey	122.2	40.4	336.4	132.4	40.2	373.9	85.6	37.1	212.6
Los Angeles	118.5	39.0	326.6	123.9	38.6	347.3	120.7	40.7	330.2
Greater California	126.8	39.5	355.3	131.4	40.2	370.3	116.5	41.1	313.7
Connecticut	137.4	49.1	368.8	140.3	50.3	376.1	113.8	42.6	300.1
Detroit	128.9	44.4	350.3	133.0	45.9	360.8	121.6	41.8	330.4
Hawaii	126.0	46.0	335.4	140.7	46.0	388.7	69.6	-	228.6
Iowa	125.4	41.0	346.5	125.8	41.2	347.5	102.3	35.8	276.6
Kentucky	120.5	41.7	326.9	119.6	41.0	325.5	127.4	44.0	345.5
Louisiana	120.9	40.8	330.6	120.5	37.7	337.3	123.0	48.6	317.8
New Jersey	129.7	46.0	348.8	134.6	47.9	361.8	109.8	40.0	292.8
New Mexico	111.7	36.1	309.8	117.8	38.4	325.9	60.5	-	168.4
Seattle-Puget Sound	143.0	44.1	401.7	148.6	44.6	421.0	114.5	43.5	300.2
Utah	112.9	33.9	319.6	114.5	34.2	325.0	82.4	-	248.4
9 SEER Areas ^b	129.1	43.0	354.7	134.2	43.6	371.6	117.7	42.0	315.8
11 SEER Areas ^b	126.3	41.9	347.4	131.9	42.3	366.7	118.1	41.7	318.4
13 SEER Areas ^b	126.3	41.9	347.2	131.8	42.3	366.4	117.9	41.7	317.4
17 SEER Areas ^b	126.1	41.7	347.1	130.6	42.1	362.4	117.5	42.5	314.1

^a Rates are per 100,000 and are age-adjusted to the 2000 US Std Population (19 age groups - Census P25-1130)

^b The SEER 9 areas are San Francisco, Connecticut, Detroit, Hawaii, Iowa, New Mexico, Seattle, Utah and Atlanta.
 The SEER 11 areas comprise the SEER 9 areas plus San Jose-Monterey and Los Angeles.

The SEER 13 areas comprise the SEER 11 areas plus the Alaska Native Registry and Rural Georgia.

The SEER 17 areas comprise the SEER 13 areas plus California excluding SF/SJM/LA, Kentucky, Louisiana and New Jersey.

- Statistic not shown. Rate based on less than 16 cases for the time interval.

Table IV-18
FEMALE BREAST CANCER (Invasive)
AGE-ADJUSTED SEER DEATH RATES^a
 By Registry, Race/Ethnicity and Age

	<u>All Races</u>			<u>Whites</u>			<u>Blacks</u>		
	<u>All Ages</u>	<u>Ages <50</u>	<u>Ages 50+</u>	<u>All Ages</u>	<u>Ages <50</u>	<u>Ages 50+</u>	<u>All Ages</u>	<u>Ages <50</u>	<u>Ages 50+</u>
<u>SEER DEATH RATES^a, 2001-2005</u>									
REGISTRY									
Atlanta & Rural Georgia	25.9	5.7	78.8	23.5	3.9	74.6	32.3	8.7	94.4
Atlanta	26.1	5.6	79.7	23.8	3.9	75.7	32.6	8.5	95.8
Rural Georgia	23.6	8.1	64.0	18.1	-	56.0	30.8	-	76.6
California	23.7	5.2	72.0	24.4	5.0	75.2	33.8	9.9	96.3
Greater Bay Area	23.0	4.8	70.5	24.8	4.4	78.0	32.4	10.1	90.9
San Francisco-Oakland	24.0	5.2	73.3	25.8	4.5	81.5	33.0	10.6	91.7
San Jose-Monterey	21.0	4.2	64.9	22.9	4.2	71.7	29.2	-	86.9
Los Angeles	23.6	5.3	71.6	23.9	4.8	73.7	34.4	10.1	98.1
Greater California	24.0	5.4	72.7	24.6	5.3	74.9	34.2	9.6	98.6
Connecticut	25.1	4.8	78.1	25.0	4.6	78.4	27.2	6.8	80.5
Detroit	27.7	6.3	83.6	25.3	5.2	78.0	36.3	9.7	105.9
Hawaii	18.0	4.5	53.2	23.4	4.4	73.3	-	-	-
Iowa	23.1	4.5	71.9	23.1	4.5	71.8	32.9	-	101.2
Kentucky	25.6	5.4	78.5	25.0	5.0	77.4	35.3	9.3	103.4
Louisiana	29.7	7.8	87.1	25.3	5.3	77.9	40.9	13.1	113.9
New Jersey	27.8	5.2	86.8	27.6	4.8	87.5	33.1	8.7	97.1
New Mexico	22.1	5.0	67.1	22.9	5.2	69.5	24.1	-	83.3
Seattle-Puget Sound	23.4	4.3	73.4	24.1	4.1	76.3	26.0	8.8	71.1
Utah	23.1	4.5	71.9	23.3	4.5	72.6	-	-	-
9 SEER Areas ^b	24.3	5.1	74.5	24.3	4.6	76.0	32.8	8.8	95.8
11 SEER Areas ^b	23.9	5.1	73.4	24.1	4.6	75.3	33.2	9.1	96.2
13 SEER Areas ^b	23.9	5.1	73.2	24.1	4.6	75.2	33.1	9.1	95.8
17 SEER Areas ^b	24.9	5.3	76.0	24.8	4.8	77.1	34.6	9.7	99.8
Total U.S.	25.0	5.5	76.1	24.4	4.9	75.3	33.5	9.7	96.0

^a US Mortality Files, National Center for Health Statistics, Centers for Disease Control and Prevention. Rates are per 100,000 and are age-adjusted to the 2000 US Std Population (19 age groups - Census P25-1130).

^b The SEER 9 areas are San Francisco, Connecticut, Detroit, Hawaii, Iowa, New Mexico, Seattle, Utah and Atlanta.

The SEER 11 areas comprise the SEER 9 areas plus San Jose-Monterey and Los Angeles.

The SEER 13 areas comprise the SEER 11 areas plus the Alaska Native Registry and Rural Georgia.

The SEER 17 areas comprise the SEER 13 areas plus California excluding SF/SJM/LA, Kentucky, Louisiana and New Jersey.

- Statistic not shown. Rate based on less than 16 cases for the time interval.

Table IV-19
 FEMALE BREAST CANCER (*In Situ*)

AGE-ADJUSTED SEER INCIDENCE RATES^a
 By Registry, Race/Ethnicity and Age

	All Races			Whites			Blacks		
	All Ages	Ages <50	Ages 50+	All Ages	Ages <50	Ages 50+	All Ages	Ages <50	Ages 50+
<u>SEER INCIDENCE RATES^a, 2001-2005</u>									
REGISTRY									
Atlanta & Rural Georgia	32.1	11.0	87.4	35.3	12.4	95.4	27.9	9.3	76.6
Atlanta	32.5	11.1	88.4	35.6	12.3	96.6	28.4	9.6	77.4
Rural Georgia	25.3	8.0	70.7	30.7	14.2	74.0	18.0	-	62.6
California	27.1	9.2	73.9	27.7	9.3	76.0	23.9	7.0	68.3
Greater Bay Area	29.9	11.0	79.3	30.5	10.8	82.2	23.6	6.7	67.8
San Francisco-Oakland	30.8	11.5	81.3	31.8	11.7	84.5	24.3	6.8	70.3
San Jose-Monterey	28.1	10.2	75.2	28.3	9.3	78.1	17.0	-	44.9
Los Angeles	24.9	8.5	67.8	25.6	8.7	70.0	24.0	7.3	68.0
Greater California	27.2	8.9	74.9	27.8	9.2	76.5	24.1	6.7	69.6
Connecticut	43.1	17.6	109.9	44.0	18.4	111.1	34.2	10.6	95.8
Detroit	37.3	13.9	98.6	38.9	15.4	100.7	33.5	9.8	95.5
Hawaii	35.8	12.9	95.7	31.8	10.7	87.2	-	-	-
Iowa	25.9	9.3	69.5	25.9	9.2	69.5	19.7	-	-
Kentucky	23.3	8.6	62.1	23.2	8.6	61.3	24.3	6.6	70.5
Louisiana	22.7	7.6	62.4	23.7	8.1	64.5	20.9	6.7	58.1
New Jersey	35.5	15.4	88.1	37.4	16.5	92.1	25.8	8.8	70.3
New Mexico	20.7	7.1	56.2	22.3	8.0	59.9	-	-	-
Seattle-Puget Sound	35.3	11.8	97.0	36.2	12.0	99.4	32.0	7.7	95.6
Utah	23.0	7.2	64.4	23.4	7.2	65.7	-	-	-
9 SEER Areas ^b	32.8	12.0	87.3	33.5	12.4	88.8	30.0	9.2	84.7
11 SEER Areas ^b	30.7	11.0	82.2	31.5	11.3	84.3	28.3	8.7	79.7
13 SEER Areas ^b	30.7	11.0	82.2	31.5	11.3	84.3	28.2	8.6	79.5
17 SEER Areas ^b	29.6	10.7	78.9	30.3	11.1	80.7	26.1	8.1	73.1

^a Rates are per 100,000 and are age-adjusted to the 2000 US Std Population (19 age groups - Census P25-1130)

^b The SEER 9 areas are San Francisco, Connecticut, Detroit, Hawaii, Iowa, New Mexico, Seattle, Utah and Atlanta.

The SEER 11 areas comprise the SEER 9 areas plus San Jose-Monterey and Los Angeles.

The SEER 13 areas comprise the SEER 11 areas plus the Alaska Native Registry and Rural Georgia.

The SEER 17 areas comprise the SEER 13 areas plus California excluding SF/SJM/LA, Kentucky, Louisiana and New Jersey.

- Statistic not shown. Rate based on less than 16 cases for the time interval.

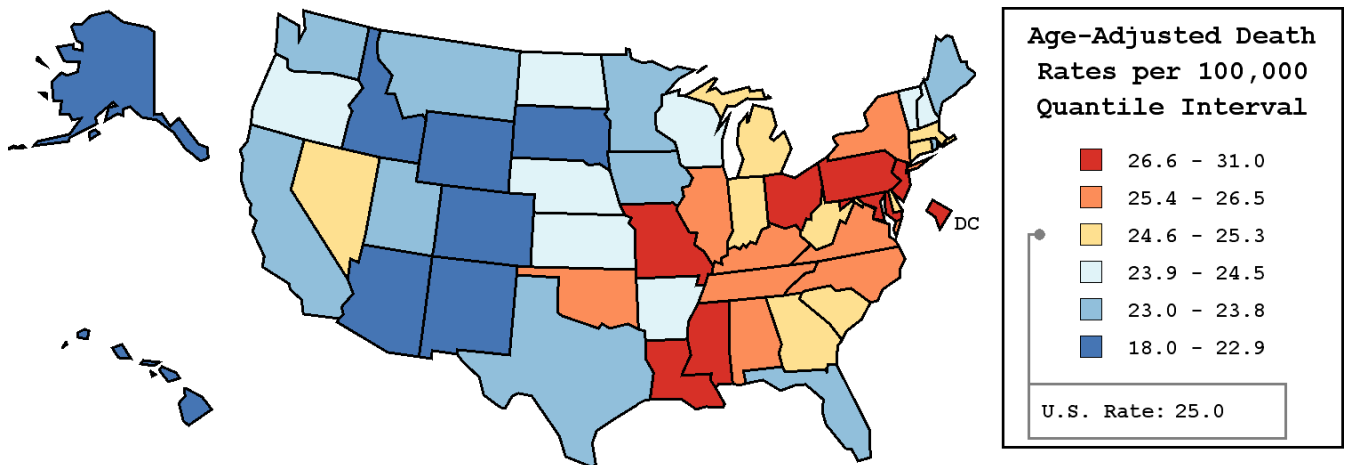
Table IV-20
FEMALE BREAST CANCER (Invasive)

AVERAGE ANNUAL AGE-ADJUSTED CANCER DEATH^a RATES BY STATE, ALL RACES, 2001-2005

Females

State	Rate	SE	Rank	PD
TOTAL U.S.	25.0	0.06		
High Five States				
D.C.	31.0 ^b	1.38	(01)	24.0 ^c
Louisiana	29.7 ^b	0.50	(02)	18.8 ^c
New Jersey	27.8 ^b	0.33	(03)	11.2 ^c
Ohio	27.6 ^b	0.28	(04)	10.4 ^c
Maryland	27.4 ^b	0.42	(05)	9.6
Low Five States				
Arizona	22.2 ^b	0.38	(47)	-11.2 ^c
New Mexico	22.1 ^b	0.67	(48)	-11.6 ^c
Idaho	22.1 ^b	0.80	(49)	-11.6 ^c
Alaska	20.5	1.42	(50)	-18.0 ^c
Hawaii	18.0 ^b	0.71	(51)	-28.0 ^c

State	Rate	SE	Rank	PD	State	Rate	SE	Rank	PD
Alabama	26.0	0.44	(12)	4.0	Montana	23.8	0.94	(35)	-4.8
Alaska	20.5	1.42	(50)	-18.0 ^c	Nebraska	24.0	0.69	(33)	-4.0
Arizona	22.2 ^b	0.38	(47)	-11.2 ^c	Nevada	25.3	0.68	(17)	1.2
Arkansas	24.4	0.55	(27)	-2.4	New Hampshire	24.3	0.81	(29)	-2.8
California	23.7 ^b	0.16	(36)	-5.2	New Jersey	27.8 ^b	0.33	(03)	11.2 ^c
Colorado	22.6 ^b	0.46	(45)	-9.6	New Mexico	22.1 ^b	0.67	(48)	-11.6 ^c
Connecticut	25.1	0.49	(22)	0.4	New York	25.6	0.21	(13)	2.4
Delaware	25.1	1.03	(20)	0.4	North Carolina	25.4	0.33	(15)	1.6
D.C.	31.0 ^b	1.38	(01)	24.0 ^c	North Dakota	24.0	1.13	(32)	-4.0
Florida	23.0 ^b	0.20	(43)	-8.0	Ohio	27.6 ^b	0.28	(04)	10.4 ^c
Georgia	24.7	0.34	(25)	-1.2	Oklahoma	25.4	0.50	(16)	1.6
Hawaii	18.0 ^b	0.71	(51)	-28.0 ^c	Oregon	24.5	0.49	(26)	-2.0
Idaho	22.1 ^b	0.80	(49)	-11.6 ^c	Pennsylvania	27.0 ^b	0.26	(06)	8.0
Illinois	26.2 ^b	0.27	(11)	4.8	Rhode Island	23.5	0.84	(38)	-6.0
Indiana	25.0	0.38	(23)	0.0	South Carolina	25.3	0.46	(19)	1.2
Iowa	23.1 ^b	0.50	(41)	-7.6	South Dakota	22.9	1.02	(44)	-8.4
Kansas	24.3	0.56	(28)	-2.8	Tennessee	26.2	0.40	(10)	4.8
Kentucky	25.6	0.46	(14)	2.4	Texas	23.8 ^b	0.21	(34)	-4.8
Louisiana	29.7 ^b	0.50	(02)	18.8 ^c	Utah	23.1	0.70	(40)	-7.6
Maine	23.5	0.75	(39)	-6.0	Vermont	24.2	1.14	(30)	-3.2
Maryland	27.4 ^b	0.42	(05)	9.6	Virginia	26.5 ^b	0.36	(09)	6.0
Massachusetts	24.8	0.36	(24)	-0.8	Washington	23.6 ^b	0.38	(37)	-5.6
Michigan	25.3	0.30	(18)	1.2	West Virginia	25.1	0.65	(21)	0.4
Minnesota	23.0 ^b	0.41	(42)	-8.0	Wisconsin	24.0	0.39	(31)	-4.0
Mississippi	26.9	0.58	(07)	7.6	Wyoming	22.6	1.30	(46)	-9.6
Missouri	26.6 ^b	0.40	(08)	6.4					



^a US Mortality Files, National Center for Health Statistics, Centers for Disease Control and Prevention. Rates are per 100,000 and are age-adjusted to the 2000 US Std Population (19 age groups - Census P25-1130).

^b Difference between state rate and total U.S. rate is statistically significant ($p \leq .0002$).

^c Absolute percent difference between state rate and total U.S. rate is 10% or more.

SE Standard error of the rate.

PD Percent difference between state rate and total U.S. rate.

Table IV-21
BREAST CANCER (Invasive)

Estimated United States Cancer Prevalence Counts^a on January 1, 2005
By Race/Ethnicity, Sex and Years Since Diagnosis

Years Since Diagnosis	0 to <5	5 to <10	10 to <15	15 to <20	20 to <25	25 to <30	0 to <15 ^e	0 to <30 ^e	>=30 ^g	Complete ^h
<u>Race/Sex</u>										
All Races ^b	814,237	629,517	423,556	279,066	147,527	96,146	1,867,310	2,390,048	100,663	2,490,711
Males	5,500	3,095	1,898	1,018	729	337	10,493	12,577	287	12,864
Females	808,737	626,422	421,658	278,048	146,798	95,809	1,856,817	2,377,471	100,376	2,477,847
White ^b	709,422	558,831	381,068	254,704	134,348	88,312	1,649,320	2,126,685	89,590	2,216,275
Males	4,624	2,736	1,654	890	701	324	9,014	10,929	166 [†]	11,095
Females	704,798	556,095	379,414	253,814	133,647	87,988	1,640,306	2,115,756	89,424	2,205,180
Black ^b	72,473	48,161	29,705	17,448	9,670	5,483	150,338	182,939	+	+
Males	706	252	172	110	25	13	1,130	1,278	+	+
Females	71,767	47,909	29,533	17,338	9,645	5,470	149,208	181,661	7,001	188,662
Asian/Pacific Islander ^c	24,107	16,145	9,249	+	+	+	49,502	+	+	+
Males	77	55	43	+	+	+	176	+	+	+
Females	24,030	16,090	9,206	+	+	+	49,326	+	+	+
Hispanic ^d	43,674	27,804	17,423	+	+	+	88,901	+	+	+
Males	179	70	44	+	+	+	293	+	+	+
Females	43,495	27,734	17,379	+	+	+	88,608	+	+	+

Estimated prevalence percent^a on January 1, 2005, of the SEER 11 population diagnosed in the previous 15 years
By Age at Prevalence, Race/Ethnicity and Sex

Age at Prevalence	Age Specific (Crude)										Age-Adjusted ^f
	All Ages	0-9	10-19	20-29	30-39	40-49	50-59	60-69	70-79	80+	All Ages
<u>Race/Sex</u>											
All Races ^c	0.5704%	-	0.0002%	0.0056%	0.0807%	0.4250%	1.1343%	1.9165%	2.5023%	2.9250%	0.5883%
Males	0.0063%	-	-	-	0.0004%	0.0023%	0.0097%	0.0251%	0.0396%	0.0563%	0.0076%
Females	1.1236%	-	0.0003%	0.0114%	0.1634%	0.8456%	2.2024%	3.6179%	4.3872%	4.5080%	1.0717%
White ^c	0.6272%	-	0.0001%	0.0053%	0.0797%	0.4304%	1.1734%	2.0381%	2.6905%	3.1255%	0.6195%
Males	0.0068%	-	-	-	0.0003%	0.0020%	0.0098%	0.0248%	0.0419%	0.0601%	0.0078%
Females	1.2473%	-	0.0002%	0.0111%	0.1650%	0.8706%	2.3125%	3.8984%	4.7632%	4.7953%	1.1396%
Black ^c	0.3885%	-	-	0.0075%	0.0967%	0.4080%	1.0318%	1.5911%	2.0442%	2.3373%	0.5082%
Males	0.0063%	-	-	-	-	0.0040%	0.0143%	0.0436%	0.0407%	0.0564%	0.0098%
Females	0.7350%	-	-	0.0143%	0.1811%	0.7624%	1.8754%	2.8014%	3.3702%	3.4373%	0.8732%
Asian/Pacific Islander ^c	0.4054%	-	-	0.0051%	0.0727%	0.4045%	0.9608%	1.3614%	1.5556%	1.5646%	0.4236%
Males	0.0031%	-	-	-	-	-	0.0044%	0.0116%	0.0216%	0.0267%	0.0038%
Females	0.7822%	-	-	0.0102%	0.1409%	0.7733%	1.7982%	2.4946%	2.6692%	2.5872%	0.7660%
Hispanic ^d	0.2125%	-	-	0.0043%	0.0550%	0.2973%	0.7711%	1.2670%	1.6036%	1.7517%	0.3875%
Males	0.0013%	-	-	-	-	0.0012%	0.0038%	0.0097%	0.0157%	0.0216%	0.0031%
Females	0.4359%	-	-	0.0094%	0.1181%	0.6086%	1.4916%	2.3208%	2.7513%	2.7476%	0.7040%

^a US 2005 cancer prevalence counts are based on 2005 cancer prevalence proportions from the SEER registries and 1/1/2005 US population estimates based on the average of 2004 and 2005 population estimates from the US Bureau of the Census. Prevalence was calculated using the First Malignant Primary Only for a person.

^{b c d} Statistics based on (b) SEER 9 Areas (c) SEER 11 Areas and Rural Georgia (d) NHIA for Hispanic for SEER 11 Areas and Rural Georgia.

^e Maximum limited-duration prevalence: 30 years for 1975-2005 SEER 9 data; 15 years for 1990-2005 SEER 11 data (used to calculate prevalence for Hispanics and Asian Pacific Islanders).

^f Percentages are age-adjusted to the 2000 US Standard Population (19 age groups - Census P25-1130) by 5-year age groups.

^{g h i} (g) Cases diagnosed more than 30 years ago were estimated using the completeness index method (Capocaccia et. al. 1997, Merrill et. al. 2000). (h) Complete prevalence is obtained by summing 0 to <30 and >=30. (i) Age-specific completeness index was approximated using empirical data from historical Connecticut tumor registry.

- Statistic not shown. Statistic based on fewer than 5 cases estimated alive in SEER for the time interval.

+ Not available.

Table IV-22

FEMALE BREAST CANCER(Invasive)

Percent Distribution and Counts by Histology among Histologically Confirmed Cases, 2001-2005
Females by Race

Histology ^a	All Races		White		Black		API		AI/AN		Hispanic ^b	
	Count	Percent	Count	Percent	Count	Percent	Count	Percent	Count	Percent	Count	Percent
Carcinoma	243,521	99.4%	203,930	99.4%	21,379	99.2%	15,729	99.3%	827	98.8%	21,211	99.1%
Epidermoid carcinoma ^c (8051-8131)	160	0.1%	127	0.1%	28	0.1%	-	-	-	-	-	-
Adenocarcinoma ^d	237,816	97.1%	199,514	97.3%	20,464	95.0%	15,430	97.4%	812	97.0%	20,563	96.1%
Adenocarcinoma, NOS (8140)	2,593	1.1%	2,087	1.0%	330	1.5%	132	0.8%	-	-	239	1.1%
Infiltrating duct carcinoma (8500)	165,691	67.6%	137,215	66.9%	15,162	70.4%	11,605	73.3%	610	72.9%	14,803	69.2%
Lobular carcinoma, NOS (8520)	19,630	8.0%	17,561	8.6%	1,195	5.5%	694	4.4%	54	6.5%	1,329	6.2%
Inflammatory adenocarcinoma (8530)	2,357	1.0%	1,941	0.9%	300	1.4%	95	0.6%	-	-	333	1.6%
Infiltrating duct mixed and infiltrating lobular mixed (8522-8524)	30,612	12.5%	26,664	13.0%	2,034	9.4%	1,637	10.3%	91	10.9%	2,484	11.6%
Mucinous adenocarcinoma (8480,8482)	6,197	2.5%	5,081	2.5%	507	2.4%	551	3.5%	20	2.4%	488	2.3%
Mucin-producing adenocarcinoma (8481)	135	0.1%	112	0.1%	19	0.1%	-	-	-	-	-	-
Tubular adenocarcinoma (8211)	3,798	1.6%	3,454	1.7%	149	0.7%	152	1.0%	-	-	194	0.9%
Papillary adenocarcinoma (8050,8260,8503,8504)	1,492	0.6%	1,094	0.5%	227	1.1%	152	1.0%	-	-	155	0.7%
Paget disease (8540-8543)	1,470	0.6%	1,211	0.6%	135	0.6%	108	0.7%	-	-	170	0.8%
Other adenocarcinomas ^e	3,841	1.6%	3,094	1.5%	406	1.9%	300	1.9%	-	-	362	1.7%
Other specific carcinomas ^f	2,795	1.1%	2,102	1.0%	521	2.4%	152	1.0%	-	-	352	1.6%
Medullary adenocarcinoma (8510-8513)	1,656	0.7%	1,154	0.6%	384	1.8%	104	0.7%	-	-	244	1.1%
Other ^g	1,139	0.5%	948	0.5%	137	0.6%	48	0.3%	-	-	108	0.5%
Unspecified, Carcinoma, NOS (8010-8011,8020-8022)	2,750	1.1%	2,187	1.1%	366	1.7%	144	0.9%	-	-	282	1.3%

Source: SEER 17 areas (San Francisco, Connecticut, Detroit, Hawaii, Iowa, New Mexico, Seattle, Utah, Atlanta, San Jose-Monterey, Los Angeles, Alaska Native Registry, Rural Georgia, California excluding SF/SJM/LA, Kentucky, Louisiana and New Jersey). Percents may not sum to 100 due to rounding.

- Statistic not shown due to fewer than 16 cases during the time period.

^a Excludes Kaposi Sarcoma, mesothelioma, lymphomas, leukemias, myelomas, lymphoreticular, and immunoproliferative diseases.

^b Hispanic is not mutually exclusive from whites, blacks, Asian/Pacific Islanders, and American Indians/Alaska Natives.

Underlying incidence data for Hispanics are based on NHIA and exclude cases from the Alaska Native Registry and Kentucky.

^c Epidermoid carcinoma includes squamous, basal, and transitional cell carcinomas.

^d Adenocarcinoma includes histologies 8050, 8140-8147, 8160-8162, 8180-8221, 8250-8507, 8514, 8520-8551, 8560, 8570-8574, 8576, 8940-8941.

^e Other adenocarcinomas include histologies 8141-8147, 8160-8162, 8180-8210, 8212-8221, 8250-8259, 8261-8479, 8483-8499, 8501-8502, 8505-8507, 8514, 8521, 8525-8529, 8531-8539, 8544-8551, 8560, 8570-8574, 8576, 8940-8941.

^f Other specific carcinomas include histologies 8012-8015, 8030-8046, 8150-8155, 8170-8175, 8230-8249, 8508, 8510-8513, 8561-8562, 8575, 8580-8671.

^g Other includes histologies 8012-8015, 8030-8046, 8150-8155, 8170-8175, 8230-8249, 8508, 8561-8562, 8575, 8580-8671.

Table IV-22 - continued

FEMALE BREAST CANCER(Invasive)

Percent Distribution and Counts by Histology among Histologically Confirmed Cases, 2001-2005
Females by Race

Histology ^a	All Races		White		Black		API		AI/AN		Hispanic ^b	
	Count	Percent	Count	Percent	Count	Percent	Count	Percent	Count	Percent	Count	Percent
Sarcoma and other soft tissue tumors (8680-8713,8800-8921, 9040-9044,9120-9136, 9150-9252,9370-9373, 9540-9582)	309	0.1%	252	0.1%	32	0.1%	17	0.1%	-	-	21	0.1%
Hemangiosarcomas (9120-9126,9170)	139	0.1%	124	0.1%	-	-	-	-	-	-	-	-
Other sarcomas ^c	170	0.1%	128	0.1%	25	0.1%	-	-	-	-	-	-
Other specific types (8720-8790,8930-8936, 8950-9030,9060-9110, 9260-9365,9380-9539)	673	0.3%	509	0.2%	73	0.3%	75	0.5%	-	-	114	0.5%
Phyllodes tumor, malignant (9020)	568	0.2%	428	0.2%	60	0.3%	66	0.4%	-	-	101	0.5%
Other ^d	105	0.0%	81	0.0%	-	-	-	-	-	-	-	-
Unspecified (8000-8005)	491	0.2%	381	0.2%	67	0.3%	20	0.1%	-	-	56	0.3%
Total ^e	244,994	100.0%	205,072	100.0%	21,551	100.0%	15,841	100.0%	837	100.0%	21,402	100.0%

Source: SEER 17 areas (San Francisco, Connecticut, Detroit, Hawaii, Iowa, New Mexico, Seattle, Utah, Atlanta, San Jose-Monterey, Los Angeles, Alaska Native Registry, Rural Georgia, California excluding SF/SJM/LA, Kentucky, Louisiana and New Jersey). Percents may not sum to 100 due to rounding.

- Statistic not shown due to fewer than 16 cases during the time period.

^a Excludes Kaposi Sarcoma, mesothelioma, lymphomas, leukemias, myelomas, lymphoreticular, and immunoproliferative diseases.

^b Hispanic is not mutually exclusive from whites, blacks, Asian/Pacific Islanders, and American Indians/Alaska Natives.

^c Underlying incidence data for Hispanics are based on NHIA and exclude cases from the Alaska Native Registry and Kentucky.

^d Other sarcomas include histologies 8680-8713, 8800-8921, 9040-9044, 9127-9136, 9150-9169, 9171-9252, 9370-9373, 9540-9582.

^e Other includes histologies 8720-8790, 8930-8936, 8950-9019, 9021-9030, 9060-9110, 9260-9365, 9380-9539.

Total includes carcinoma cases from the previous page.

Table IV-23

FEMALE BREAST CANCER(In Situ)

Percent Distribution and Counts by Histology among Histologically Confirmed Cases, 2001-2005
Females by Race

Histology ^a	All Races		White		Black		API		AI/AN		Hispanic ^b	
	Count	Percent	Count	Percent	Count	Percent	Count	Percent	Count	Percent	Count	Percent
Adenocarcinoma ^c	55,059	95.3%	45,326	95.2%	4,628	95.7%	4,341	94.7%	155	95.7%	4,316	96.1%
Adenocarcinoma <i>in situ</i> , NOS (8140/2)	20	0.0%	19	0.0%	-	-	-	-	-	-	-	-
Cribiform carcinoma <i>in situ</i> (8201/2)	4,639	8.0%	3,762	7.9%	344	7.1%	479	10.4%	-	-	356	7.9%
Ductal carcinoma <i>in situ</i> (8500/2)	20,452	35.4%	16,803	35.3%	1,781	36.8%	1,613	35.2%	64	39.5%	1,606	35.8%
Lobular carcinoma <i>in situ</i> , NOS (8520/2)	6,599	11.4%	5,803	12.2%	398	8.2%	213	4.6%	20	12.3%	472	10.5%
Comedocarcinoma <i>in situ</i> (8501/2)	5,378	9.3%	4,512	9.5%	405	8.4%	407	8.9%	-	-	394	8.8%
Intraductal and lobular carcinoma <i>in situ</i> (8522/2,8523/2,8524/2)	13,750	23.8%	11,087	23.3%	1,238	25.6%	1,286	28.1%	33	20.4%	1,161	25.9%
Intraductal micropapillary (8507/2)	1,935	3.3%	1,581	3.3%	196	4.1%	127	2.8%	-	-	165	3.7%
Other adenocarcinomas ^d	2,286	4.0%	1,759	3.7%	266	5.5%	215	4.7%	-	-	161	3.6%
Other <i>in situ</i> histologies ^e	2,737	4.7%	2,262	4.8%	210	4.3%	243	5.3%	-	-	175	3.9%
Total	57,796	100.0%	47,588	100.0%	4,838	100.0%	4,584	100.0%	162	100.0%	4,491	100.0%

Source: SEER 17 areas (San Francisco, Connecticut, Detroit, Hawaii, Iowa, New Mexico, Seattle, Utah, Atlanta, San Jose-Monterey, Los Angeles, Alaska Native Registry, Rural Georgia, California excluding SF/SJM/LA, Kentucky, Louisiana and New Jersey). Percents may not sum to 100 due to rounding.

- Statistic not shown due to fewer than 16 cases during the time period.

^a Excludes Kaposi Sarcoma, mesothelioma, lymphomas, leukemias, myelomas, lymphoreticular, and immunoproliferative diseases.

^b Hispanic is not mutually exclusive from whites, blacks, Asian/Pacific Islanders, and American Indians/Alaska Natives.

^c Underlying incidence data for Hispanics are based on NHIA and exclude cases from the Alaska Native Registry and Kentucky.

^c Adenocarcinoma includes histologies 8050, 8140-8147, 8160-8162, 8180-8221, 8250-8507, 8514, 8520-8551, 8560, 8570-8574, 8576, 8940-8941.

^d Other adenocarcinomas include 8050, 8141-8147, 8160-8162, 8180-8200, 8202-8221, 8250-8490, 8502-8506, 8514, 8521, 8525-8551, 8560, 8570-8574, 8576, 8940-8941.

^e Other histologies include 8000-8049, 8051-8139, 8148-8159, 8163-8179, 8222-8249, 8508-8513, 8515-8519, 8552-8559, 8561-8569, 8575, 8577-8939, 8942-9989.

SEER Incidence, Delay Adjusted Incidence and US Death Rates^a Female Breast Cancer, by Race

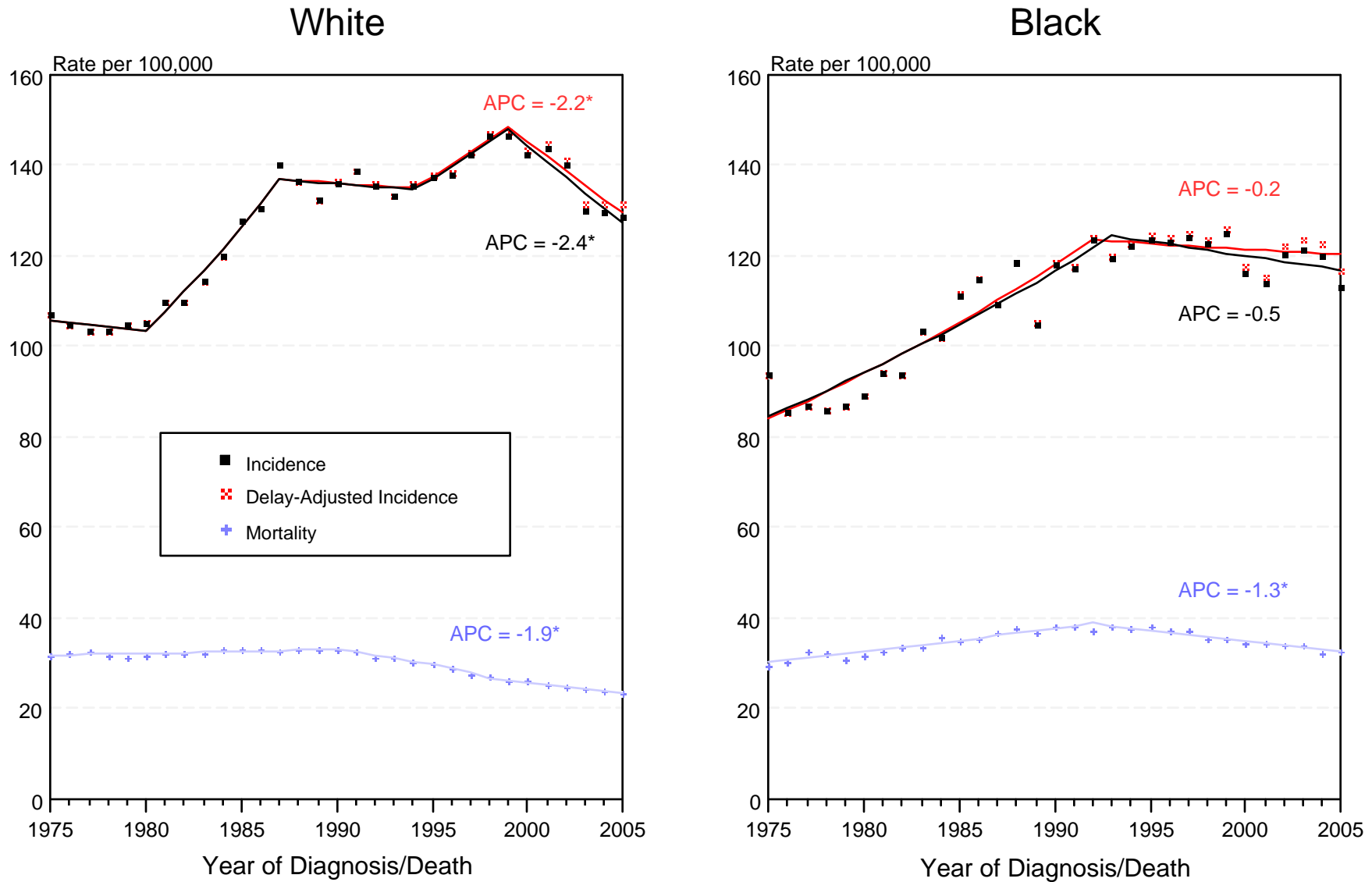


Figure IV-1

^a Source: SEER 9 areas and US Mortality Files (National Center for Health Statistics, CDC). Rates are age-adjusted to the 2000 US Std Population (19 age groups - Census P25-1103). Regression lines and APCs are calculated using the Joinpoint Regression Program Version 3.3.1, April 2008, National Cancer Institute. The APC is the Annual Percent Change for the regression line segments. The APC shown on the graph is for the most recent trend.
* The APC is significantly different from zero ($p < 0.05$).

SEER Incidence, Delay Adjusted Incidence and US Death Rates^a Female Breast Cancer, by Age and Race

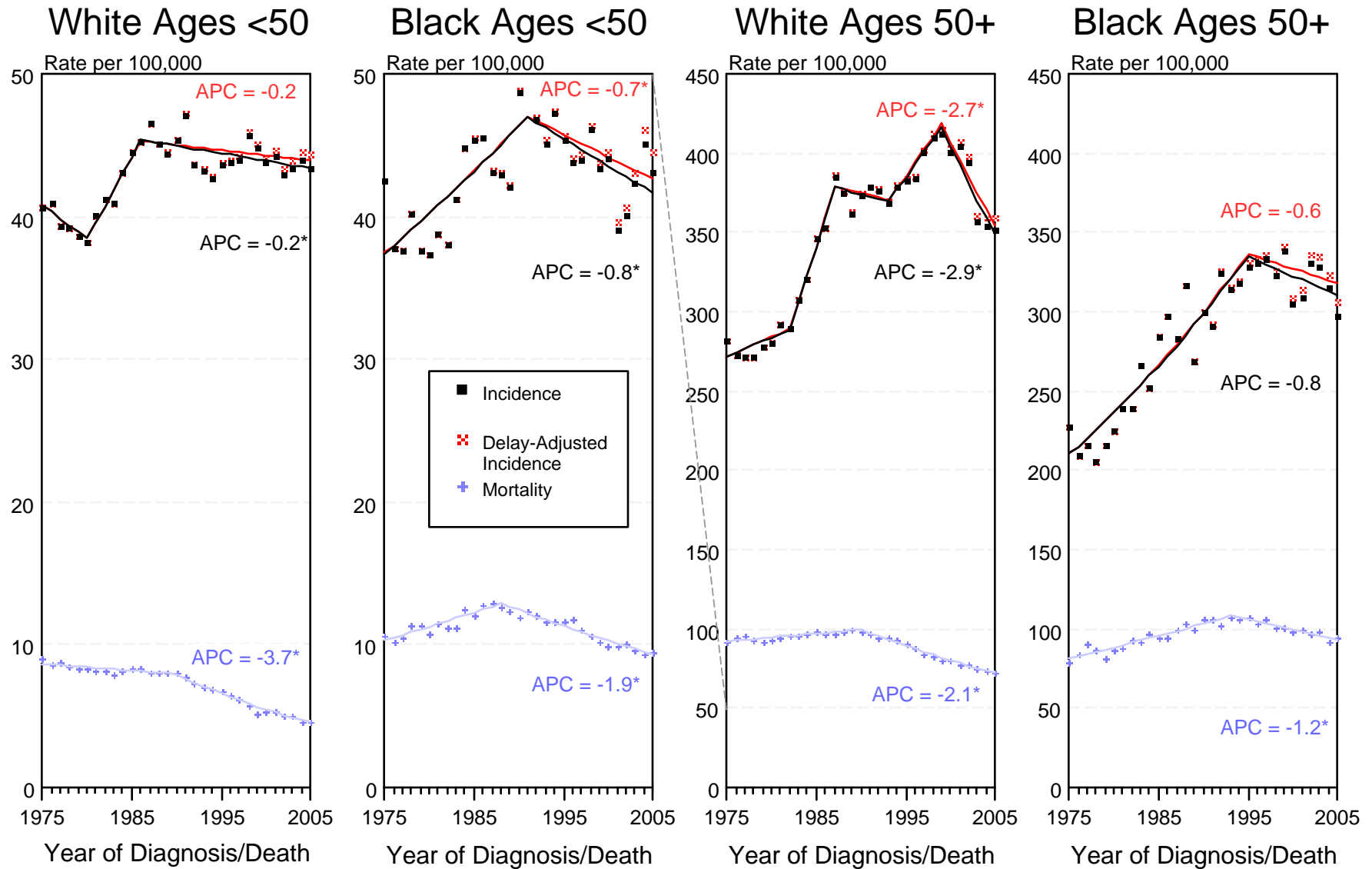


Figure IV-2

^a Source: SEER 9 areas and US Mortality Files (National Center for Health Statistics, CDC). Rates are age-adjusted to the 2000 US Std Population (19 age groups - Census P25-1103). Regression lines and APCs are calculated using the Joinpoint Regression Program Version 3.3.1, April 2008, National Cancer Institute. The APC is the Annual Percent Change for the regression line segments. The APC shown on the graph is for the most recent trend.
* The APC is significantly different from zero ($p < 0.05$).

SEER Incidence and Delay Adjusted Incidence Rates^a Female Breast Cancer (*In Situ*), by Race

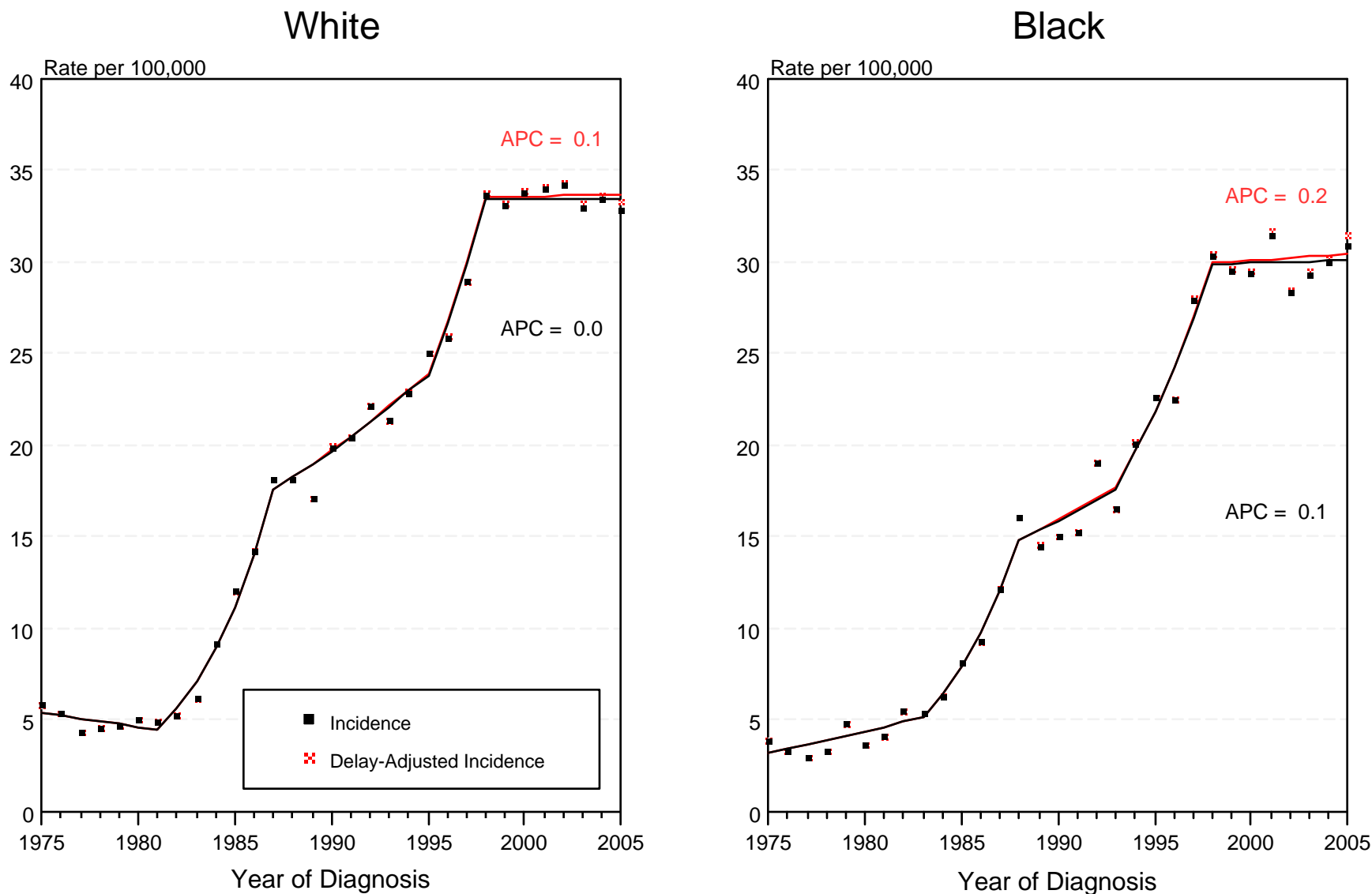


Figure IV-3

^a Source: SEER 9 areas. Rates are age-adjusted to the 2000 US Std Population (19 age groups - Census P25-1103). Regression lines and APCs are calculated using the Joinpoint Regression Program Version 3.3.1, April 2008, National Cancer Institute. The APC is the Annual Percent Change for the regression line segments. The APC shown on the graph is for the most recent trend. The APC is significantly different from zero ($p < 0.05$).

*

SEER Incidence and US Death Rates^a Female Breast Cancer

Joinpoint Analyses for Whites and Blacks from 1975-2005
and for Asian/Pacific Islanders, American Indians/Alaska Natives and Hispanics from 1992-2005

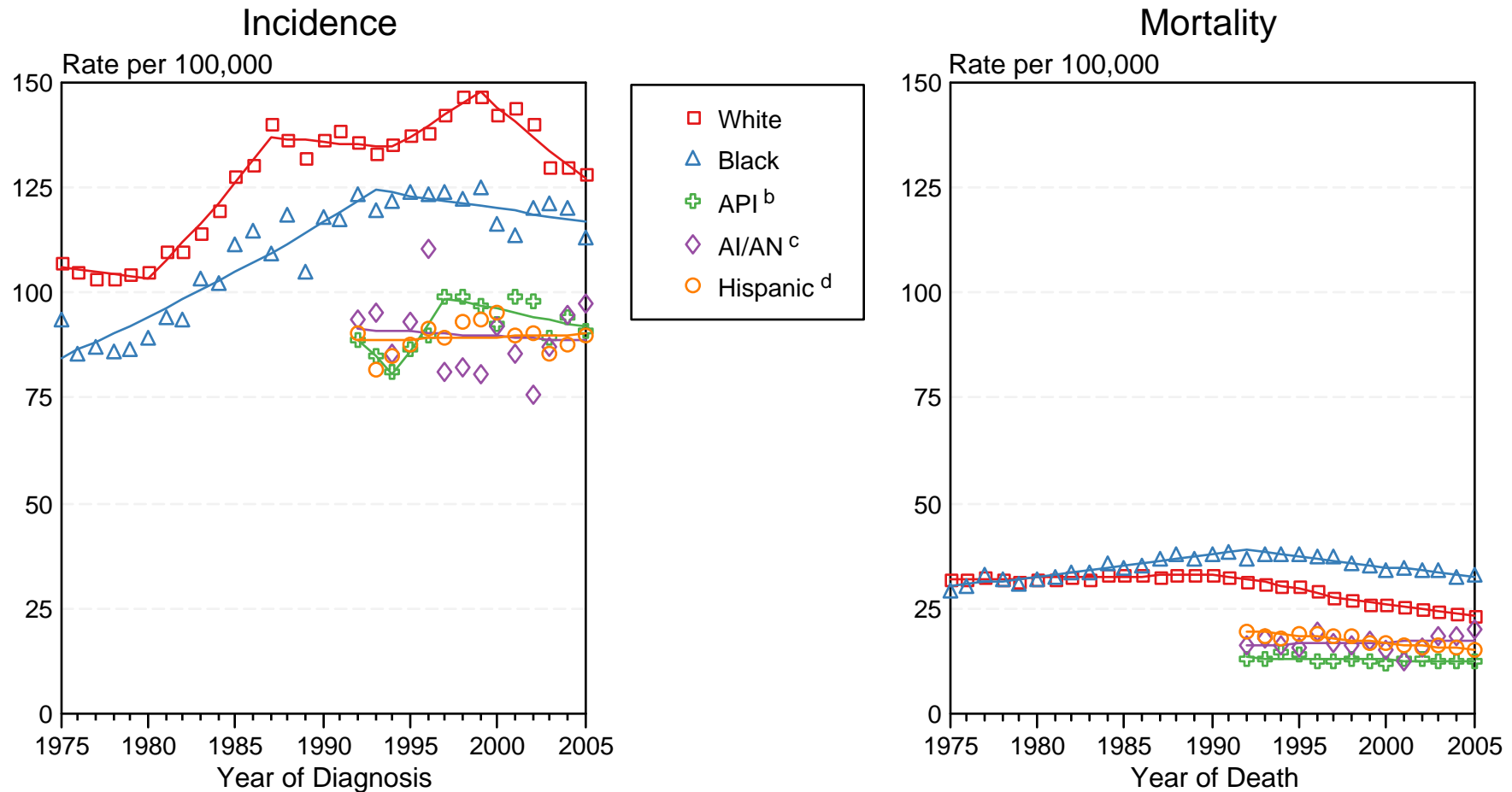


Figure IV-4

Source: Incidence data for whites and blacks are from the SEER 9 areas (San Francisco, Connecticut, Detroit, Hawaii, Iowa, New Mexico, Seattle, Utah, Atlanta). Incidence data for Asian/Pacific Islanders, American Indians/Alaska Natives and Hispanics are from the SEER 13 Areas (SEER 9 Areas, San Jose-Monterey, Los Angeles, Alaska Native Registry and Rural Georgia). Mortality data are from US Mortality Files, National Center for Health Statistics, CDC.

^a Rates are age-adjusted to the 2000 US Std Population (19 age groups - Census P25-1103).

Regression lines are calculated using the Joinpoint Regression Program Version 3.3.1, April 2008, National Cancer Institute. Joinpoint analyses for Whites and Blacks during the 1975-2005 period allow a maximum of 4 joinpoints. Analyses for other ethnic groups during the period 1992-2005 allow a maximum of 3 joinpoints.

^b API = Asian/Pacific Islander.

^c AI/AN = American Indian/Alaska Native. Rates for American Indian/Alaska Native are based on the CHSDA(Contract Health Service Delivery Area) counties.

^d Hispanic is not mutually exclusive from whites, blacks, Asian/Pacific Islanders, and American Indians/Alaska Natives. Incidence data for Hispanics are based on NHIA and exclude cases from the Alaska Native Registry. Mortality data for Hispanics exclude cases from Connecticut, Maine, Maryland, Minnesota, New Hampshire, New York, North Dakota, Oklahoma, and Vermont.

Breast Cancer Incidence Rates, 1975-2005 by Age, *In Situ* vs Malignant All Races, Female

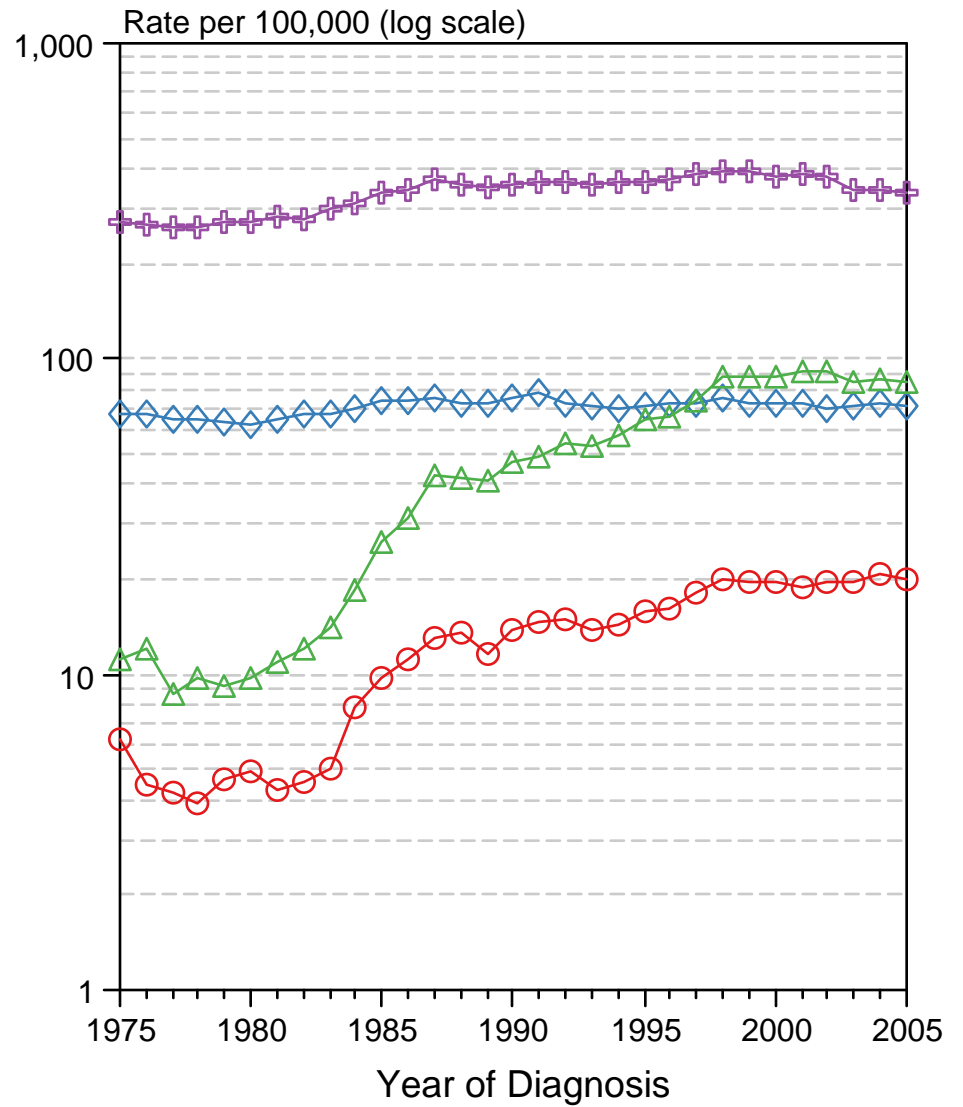
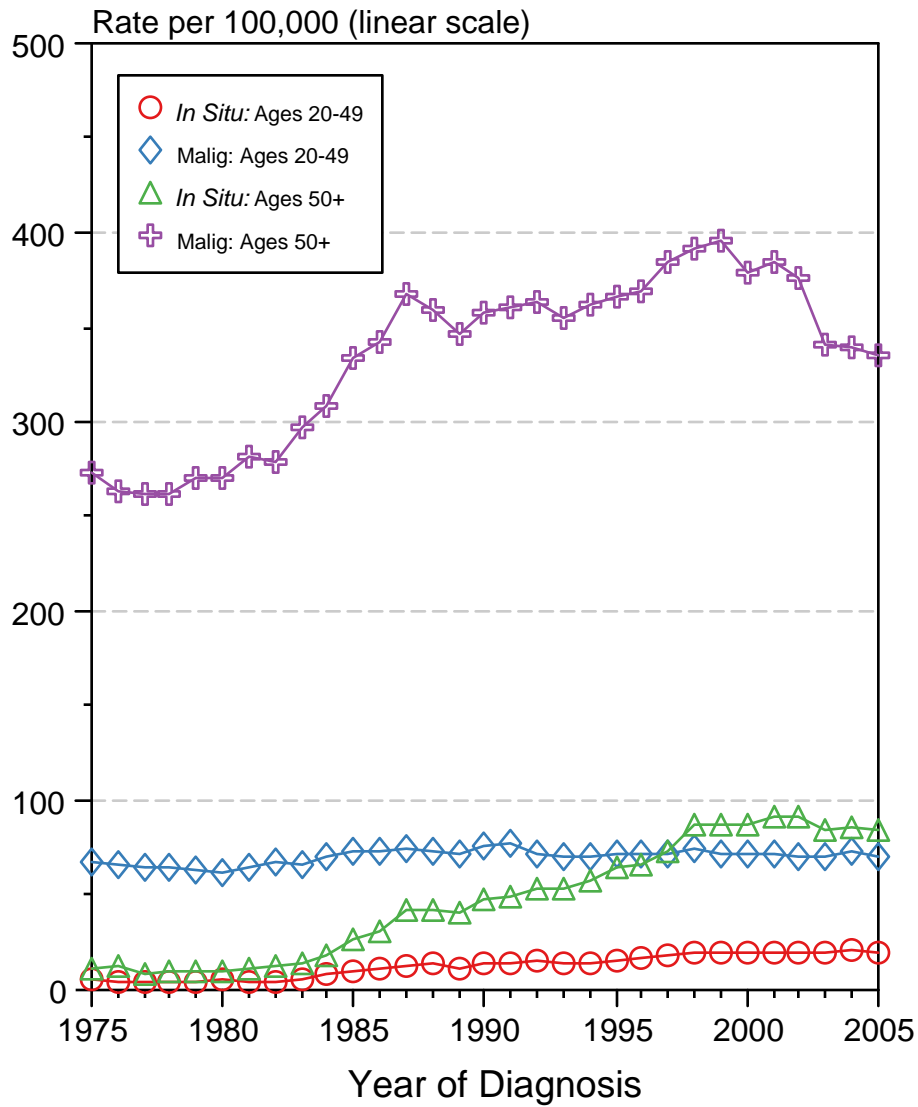


Figure IV-5

Source: SEER 9 areas. Rates are age-adjusted to the 2000 US Std Population (19 age groups - Census P25-1103).

Breast Cancer Incidence Rates, 1975-2005 by Age, *In Situ* vs Malignant White Female

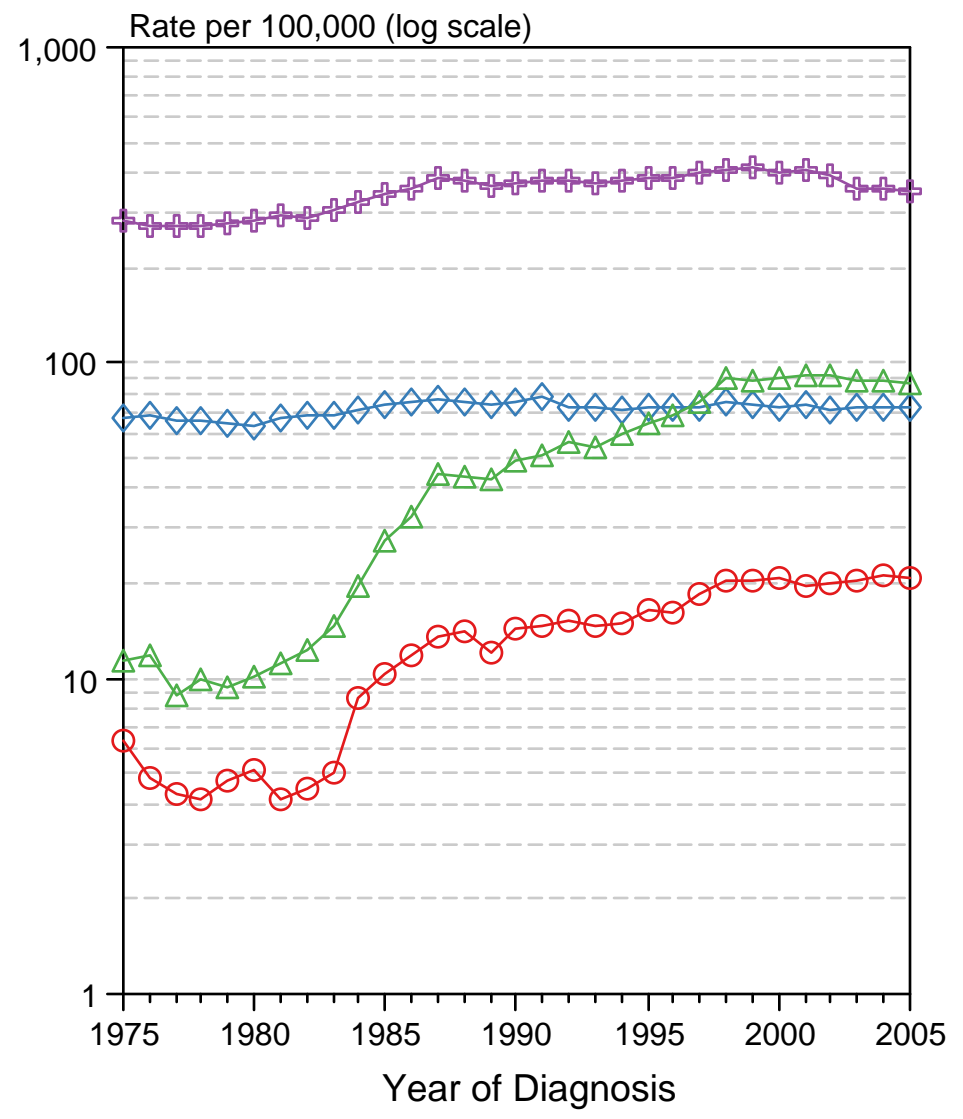
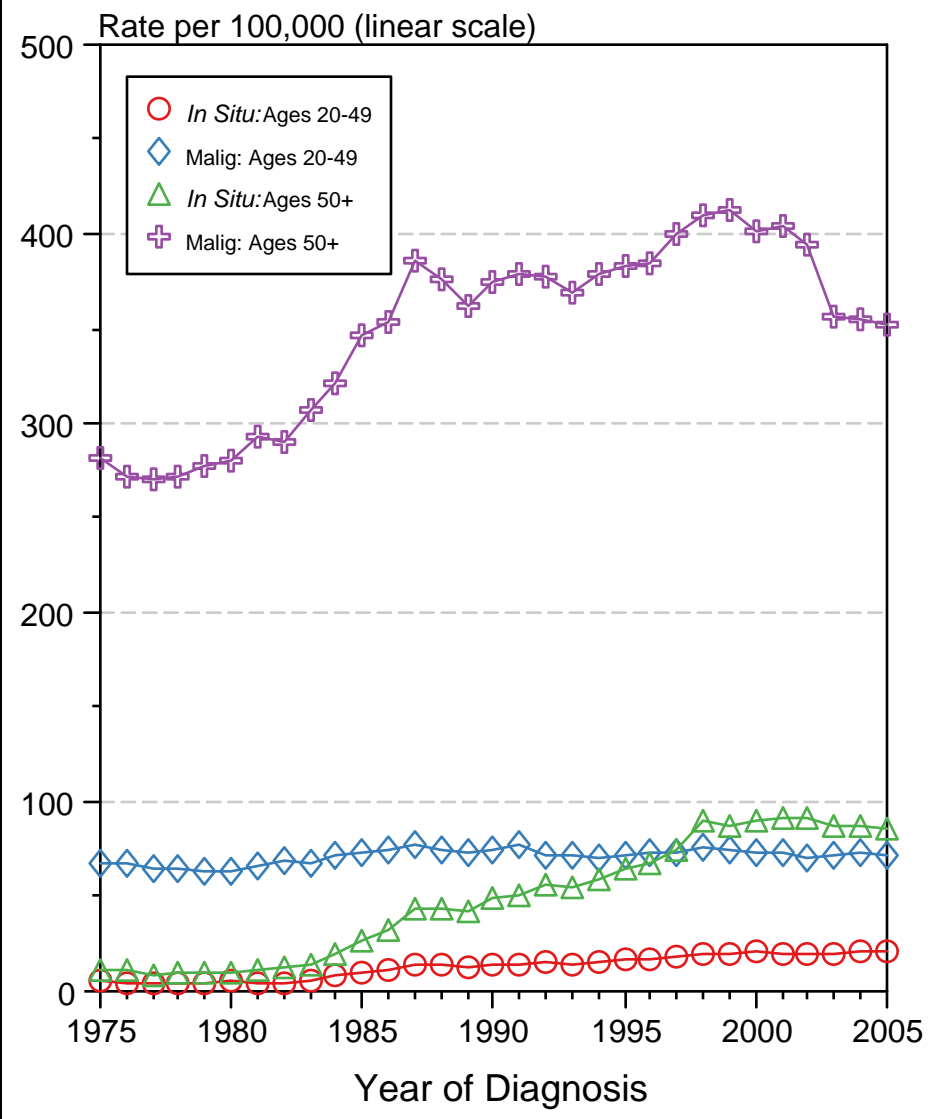


Figure IV-6

Source: SEER 9 areas. Rates are age-adjusted to the 2000 US Std Population (19 age groups - Census P25-1103).

Breast Cancer Incidence Rates, 1975-2005 by Age, *In Situ* vs Malignant Black Female

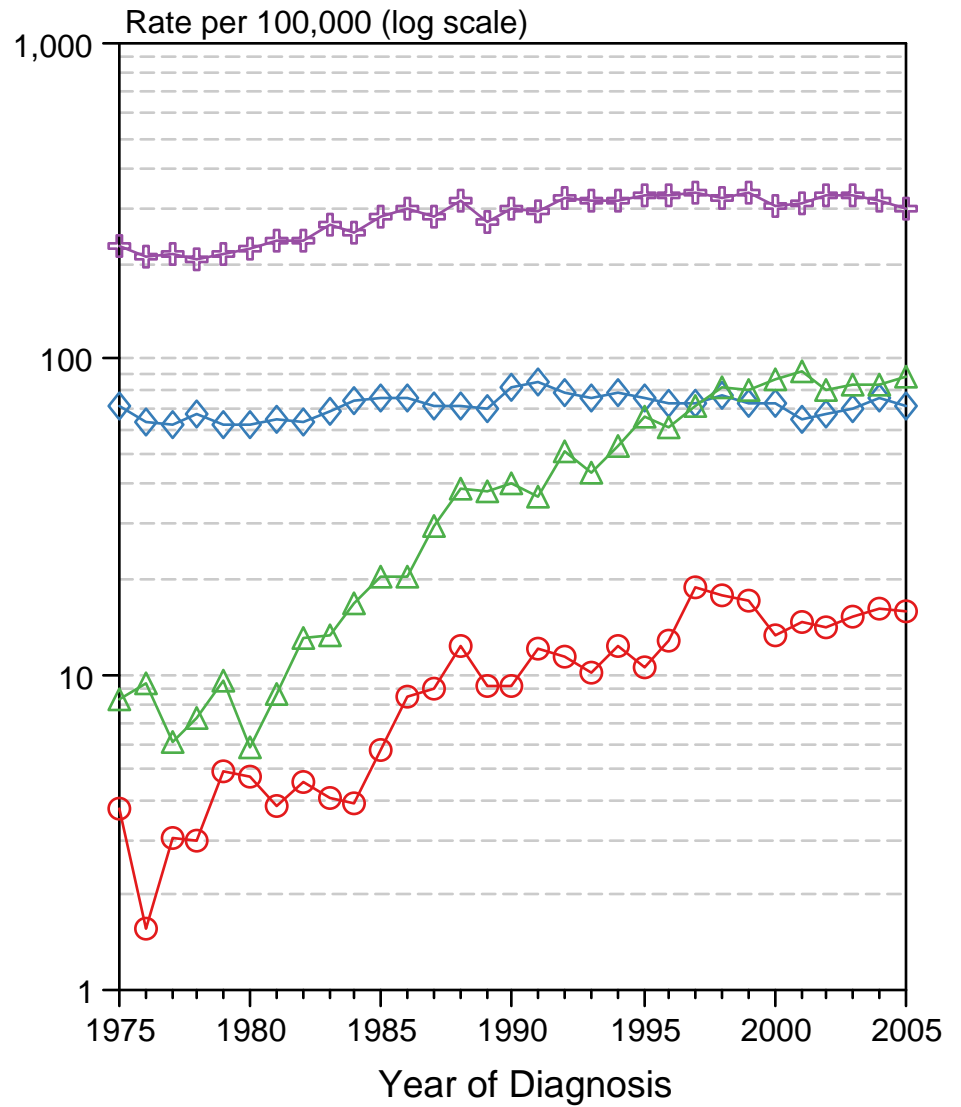
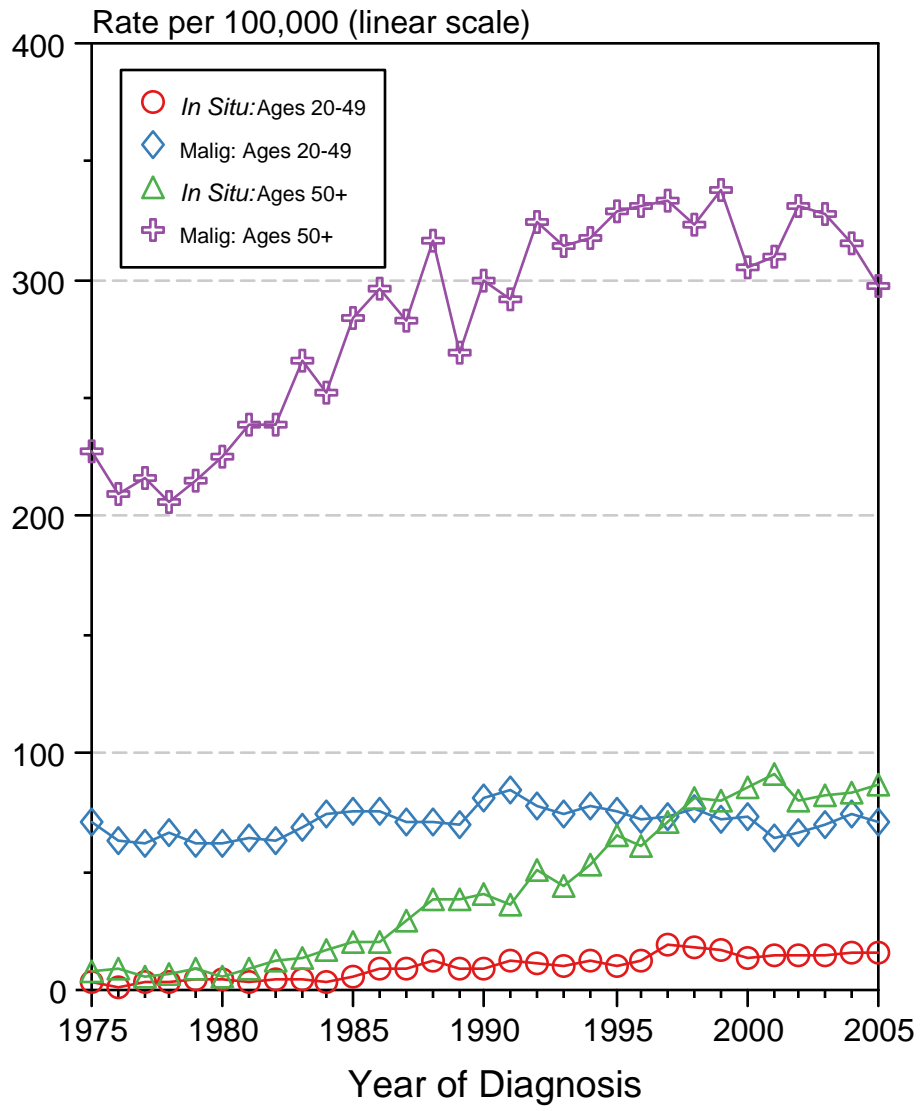
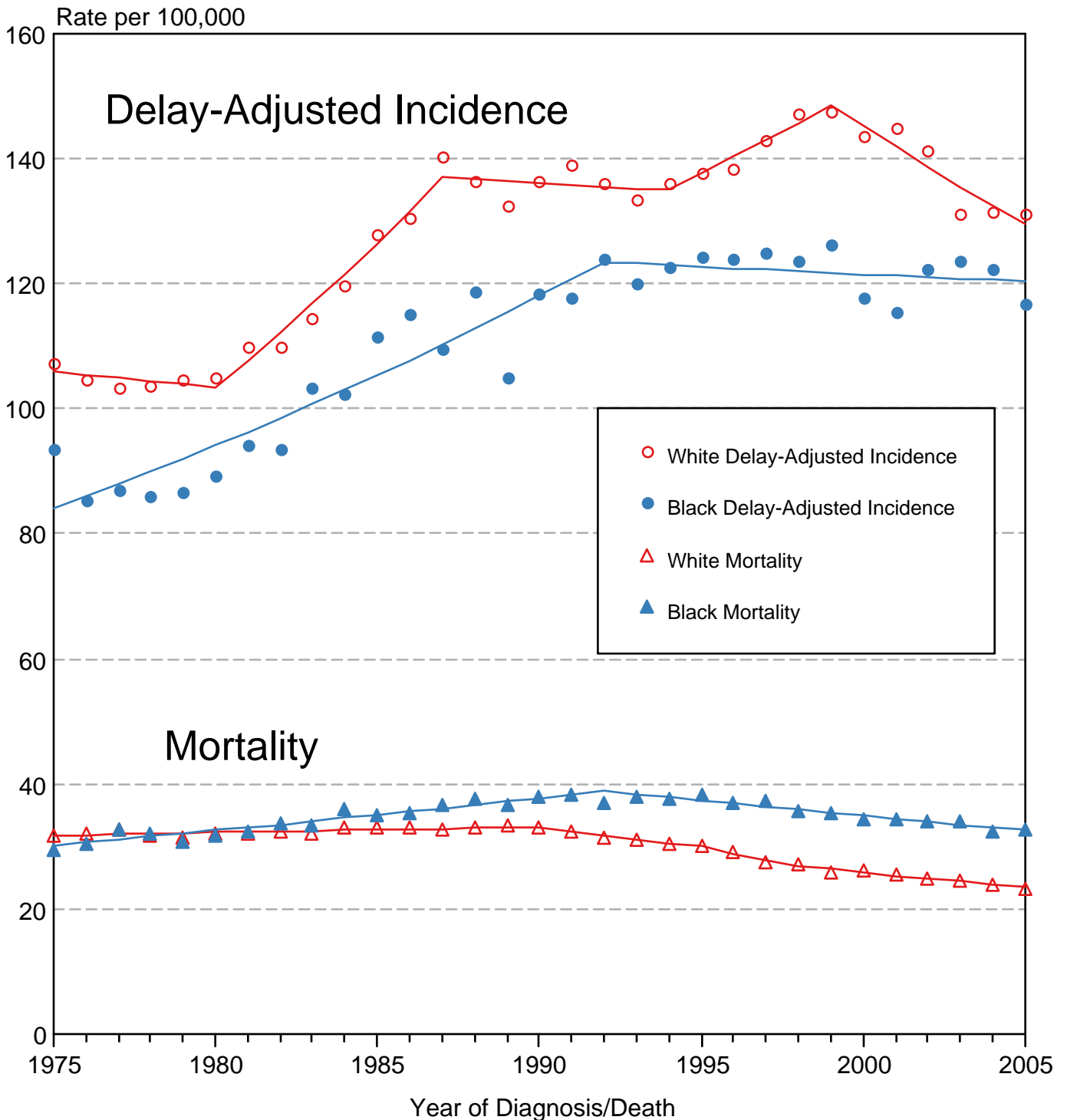


Figure IV-7

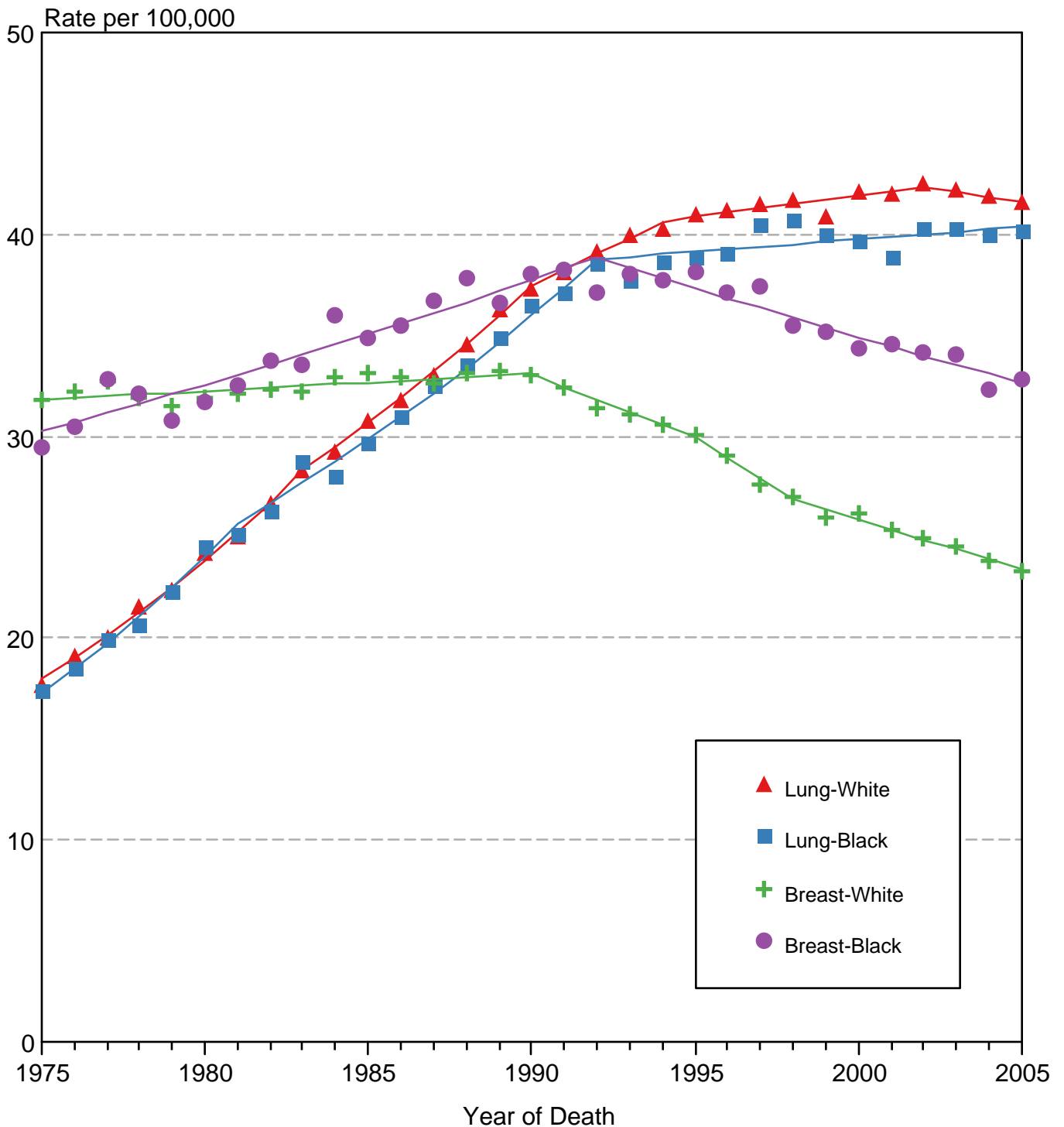
Source: SEER 9 areas. Rates are age-adjusted to the 2000 US Std Population (19 age groups - Census P25-1103).

Breast Cancer Delay-Adjusted Incidence & Mortality White Females vs Black Females 1975-2005



Source: SEER 9 areas and US Mortality Files (National Center for Health Statistics, CDC).
 Rates are age-adjusted to the 2000 US Std Population (19 age groups - Census P25-1103).
 Regression lines are calculated using the Joinpoint Regression Program Version 3.3.1, April 2008, National Cancer Institute.

Breast vs Lung Cancer Mortality White Females vs Black Females 1975-2005



Source: US Mortality Files, National Center for Health Statistics, CDC.
 Rates are age-adjusted to the 2000 US Std Population (19 age groups - Census P25-1103).
 Regression lines are calculated using the Joinpoint Regression Program Version 3.3.1, April 2008, National Cancer Institute.