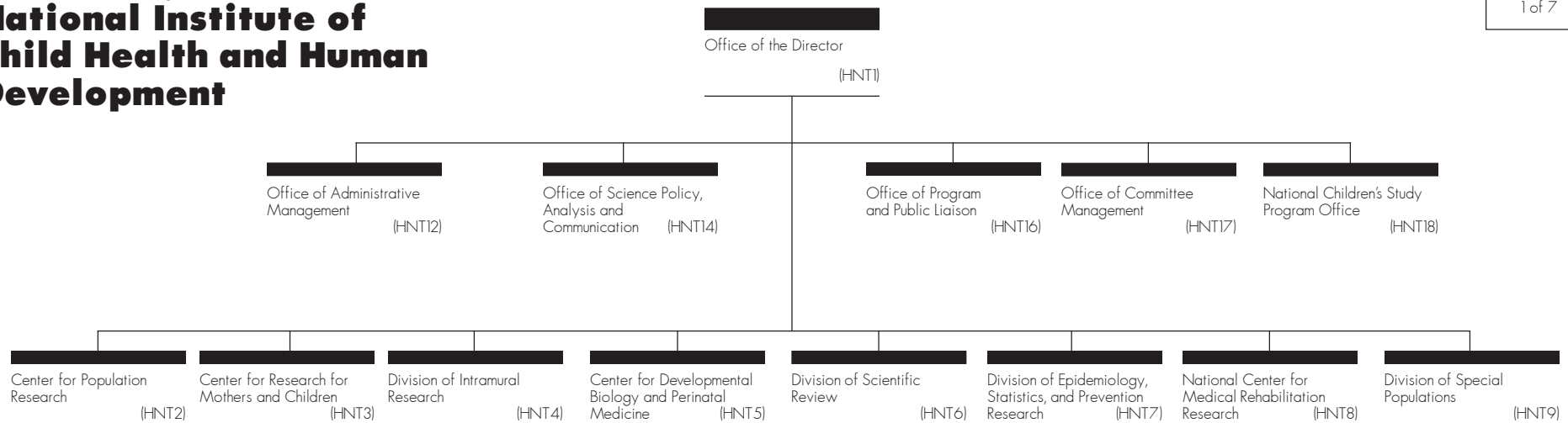


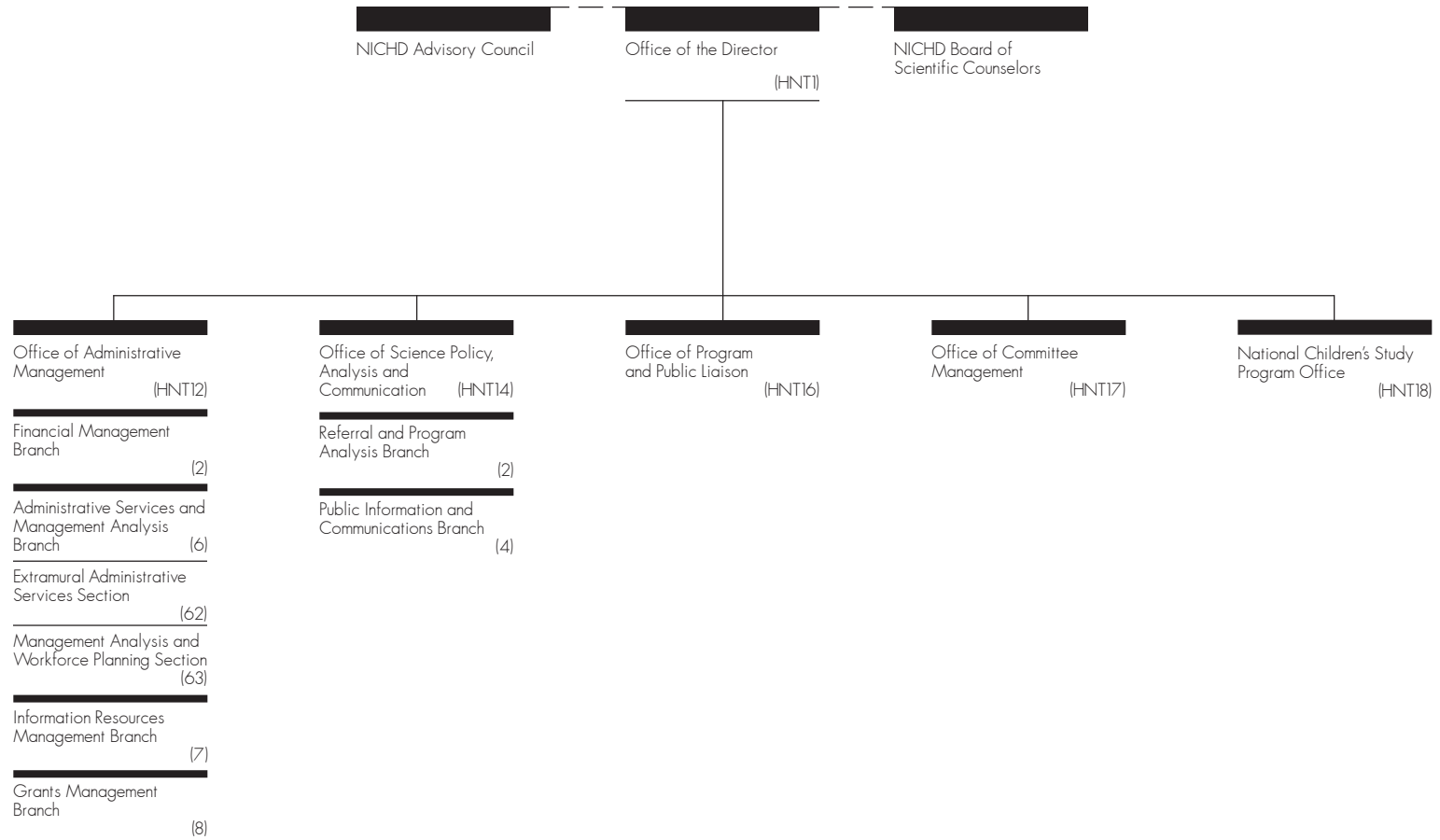
Eunice Kennedy Shriver
**National Institute of
 Child Health and Human
 Development**



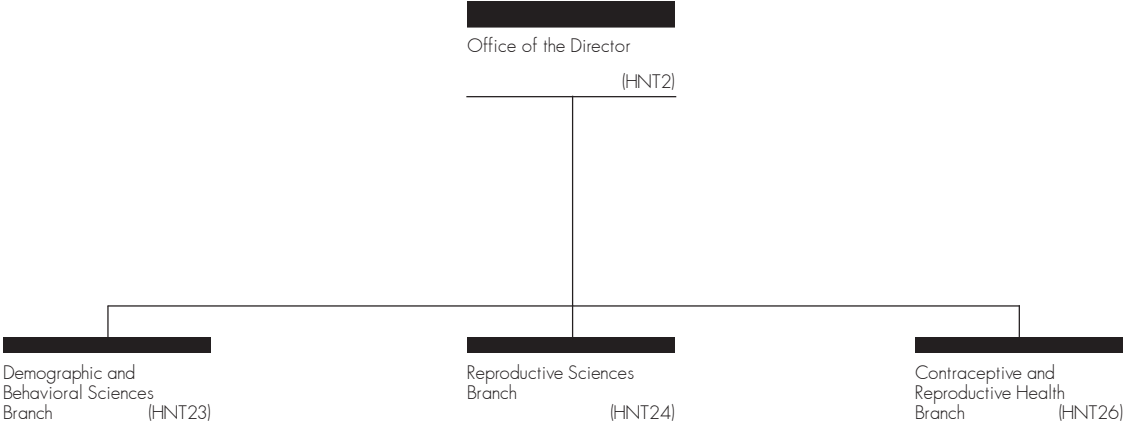
Conducts, fosters, and supports biomedical and behavioral research through research grants, research contracts, and research performed in its own laboratories on: child health, maternal health, problems of human development with special reference to mental retardation; and on family structure, the dynamics of human population, and the reproductive process.

- Promotes the application of research findings to clinical practice;
- Initiates and cooperates in government-wide efforts on unique problems that emerge affecting the health of children and their families;
- Provides consultation to Federal agencies and non-Federal groups in the development of programs to improve the health of children and their families;
- Coordinates and integrates research efforts with service-oriented health agencies and the Office of Child Development; and
- Disseminates information related to research findings to practitioners and the general public for improving the health of children and their families.

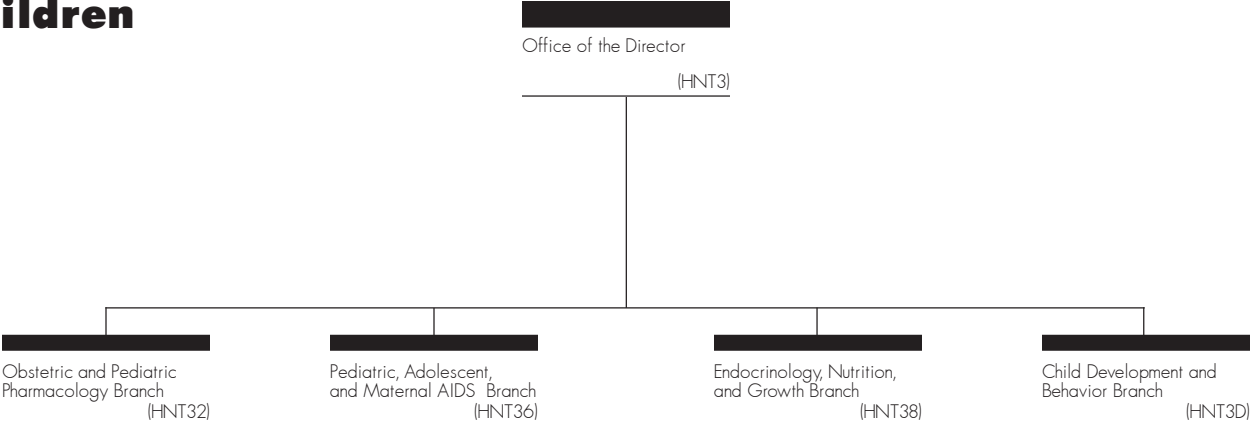
Office of the Director



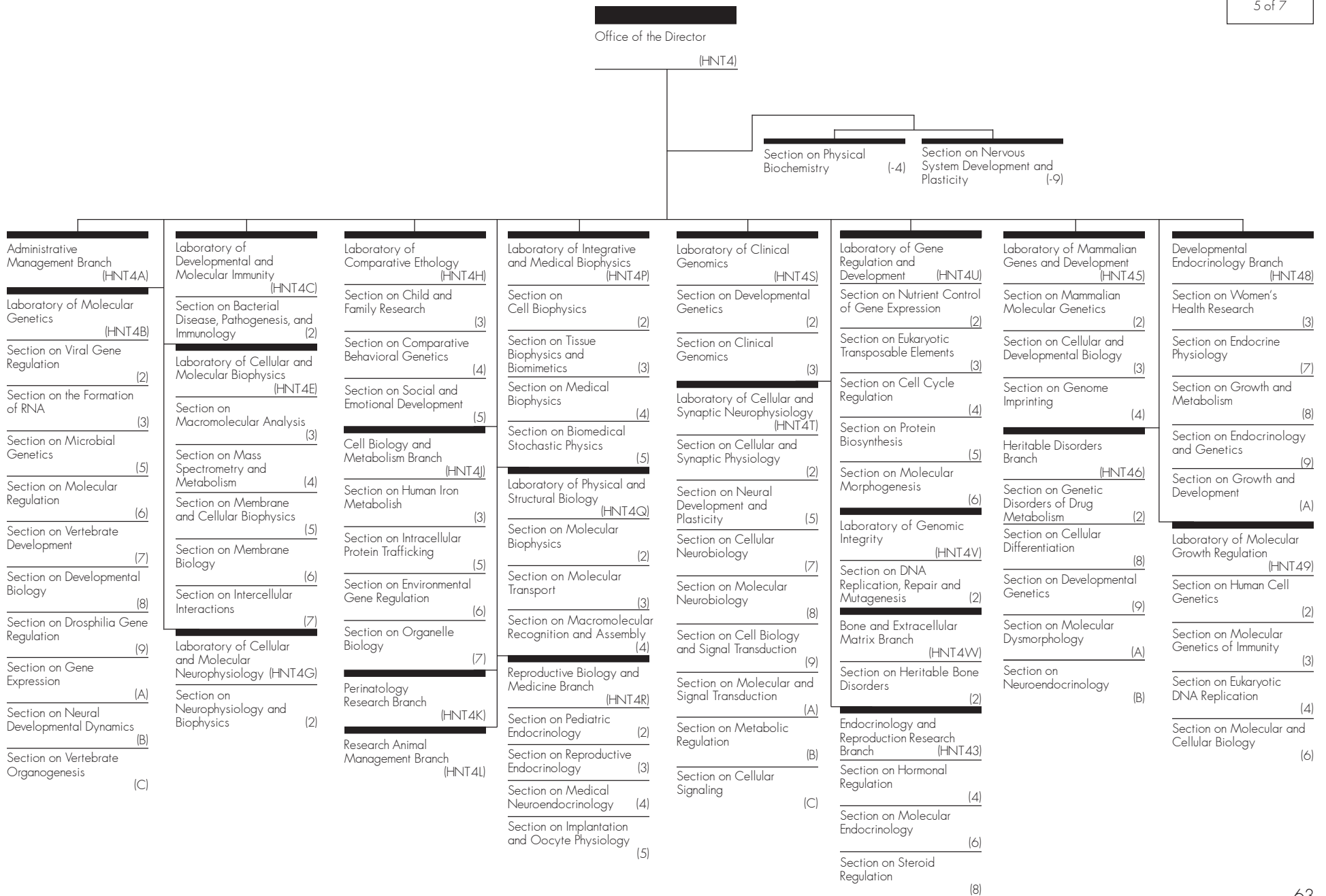
Center for Population Research



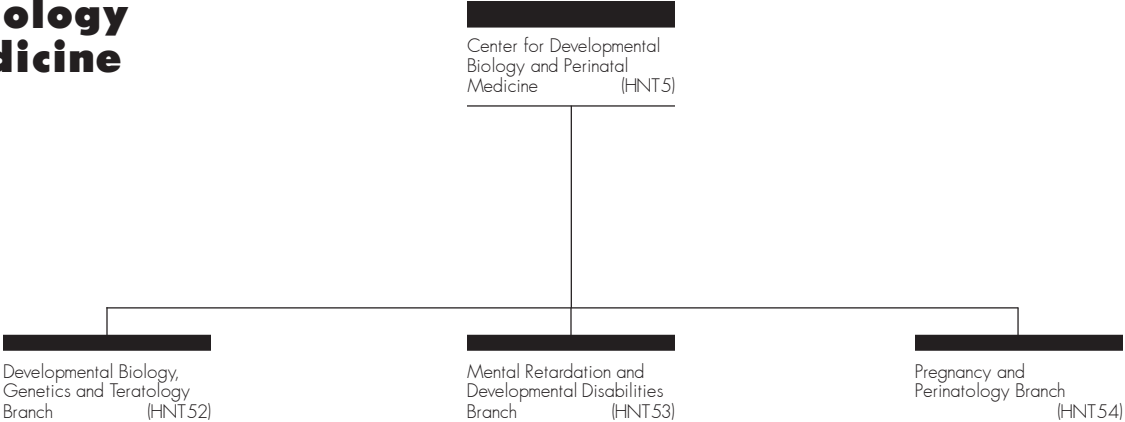
Center for Research for Mothers and Children



Division of Intramural Research



Center for Developmental Biology and Perinatal Medicine



Division of Epidemiology, Statistics, and Prevention Research

