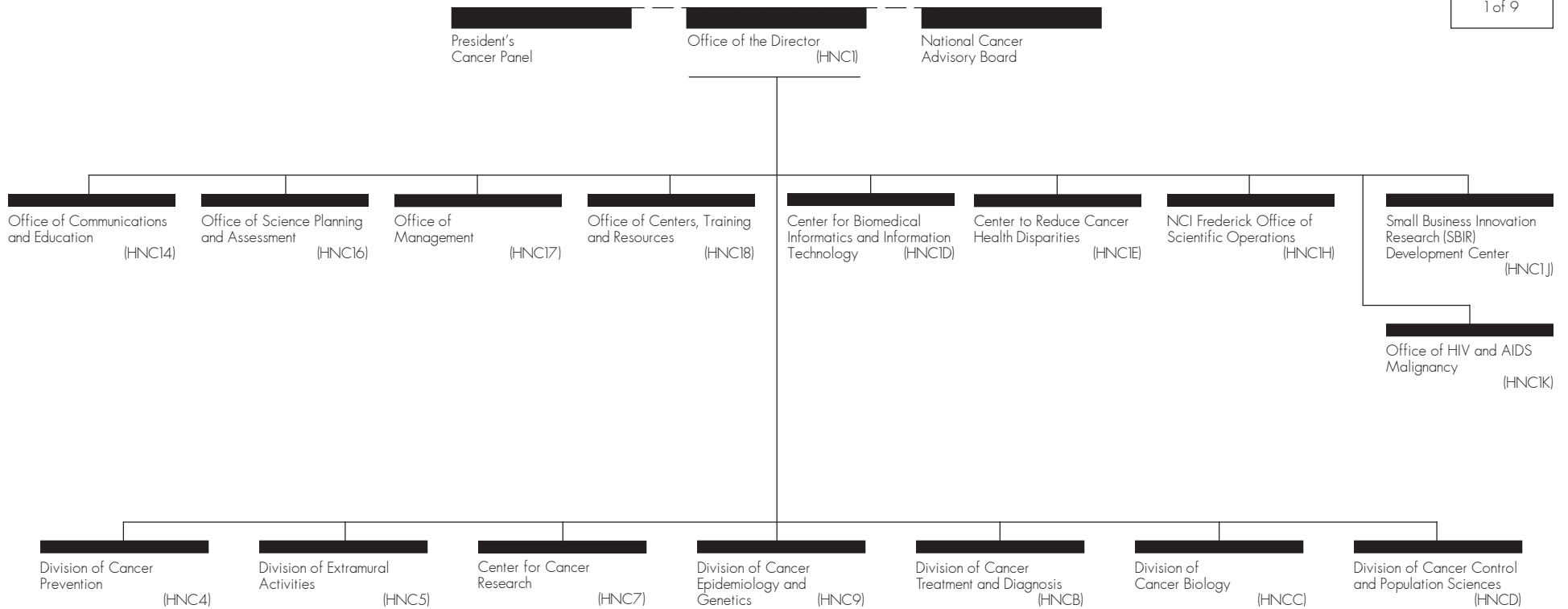


National Cancer Institute



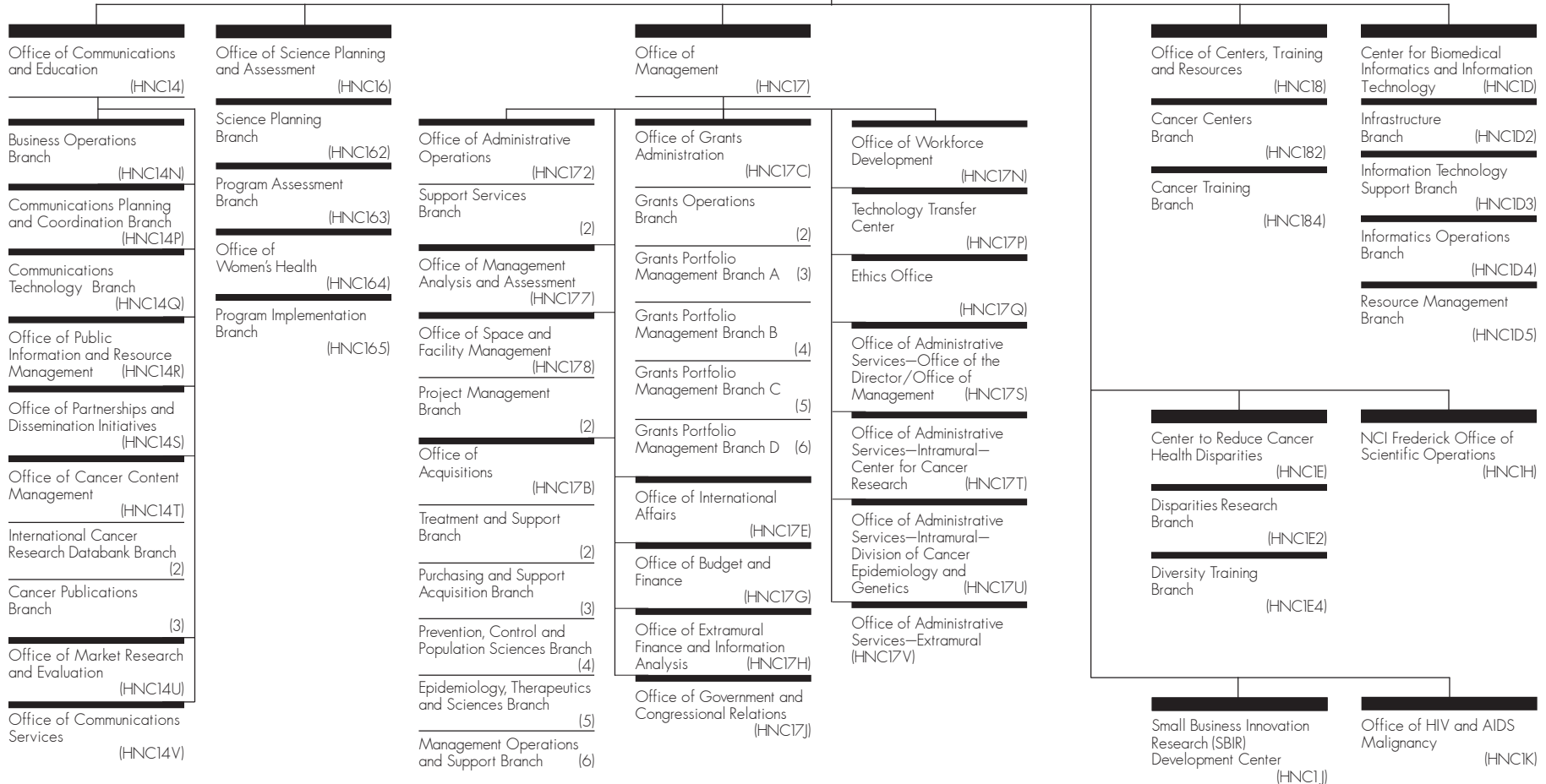
Plans, conducts, and coordinates a national program involving: (a) research on the detection, diagnosis, cause, prevention, treatment, and palliation of cancers and on rehabilitation of the cancer patient; and (b) demonstration of the effectiveness of cancer control methods and techniques. Specifically:

- Conducts and directs research performed in its own laboratories and through contracts;
- Supports and coordinates research projects by scientific institutions and individuals through research grants;
- Supports training in fundamental sciences and clinical disciplines through individual and institutional research training awards and clinical education awards;
- Supports construction of laboratories and related facilities necessary for research on cancer;
- Supports field tests and community demonstration projects of methods and techniques for cancer control;
- Collaborates with voluntary organizations and other institutions engaged in cancer research, training, and control activities;
- Encourages and coordinates cancer research by industrial concerns where such concerns evidence a particular capability for programmatic research;
- Collects and disseminates information on cancer research and cancer control; and
- Consults with appropriate individuals and agencies in the development, coordination, and support of cancer research programs in other countries.

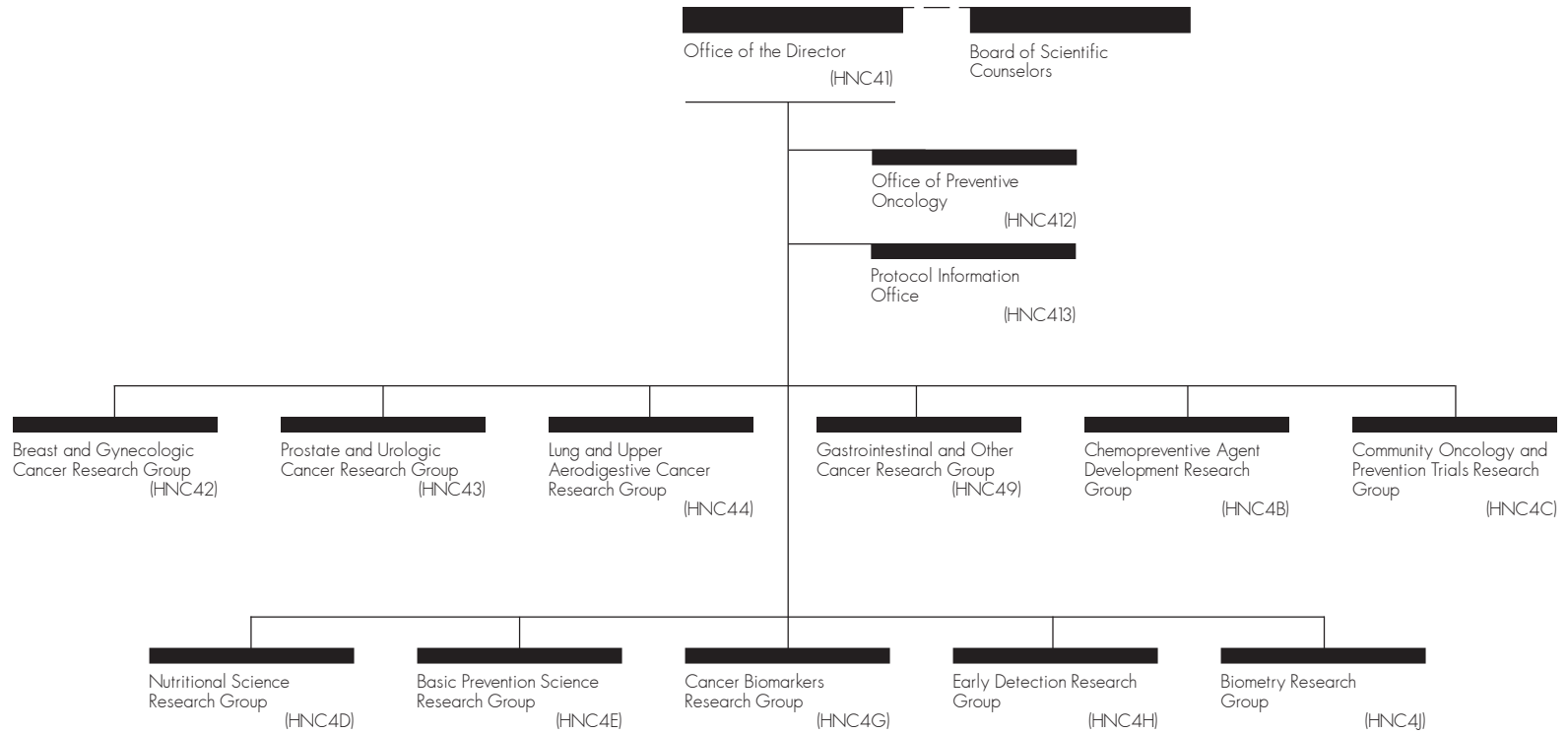
Office of the Director

President's Cancer Panel Office of the Director (HNC1) National Cancer Advisory Board

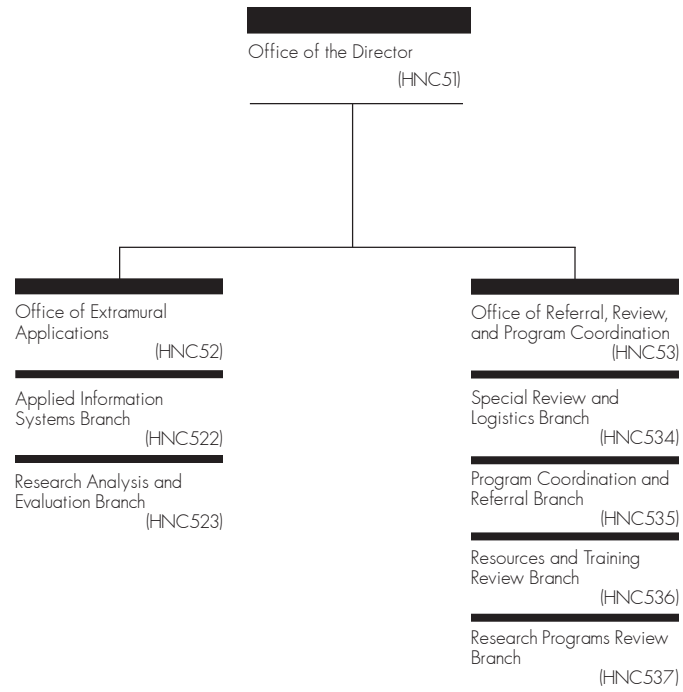
Office of Media Relations (HNC1-5)



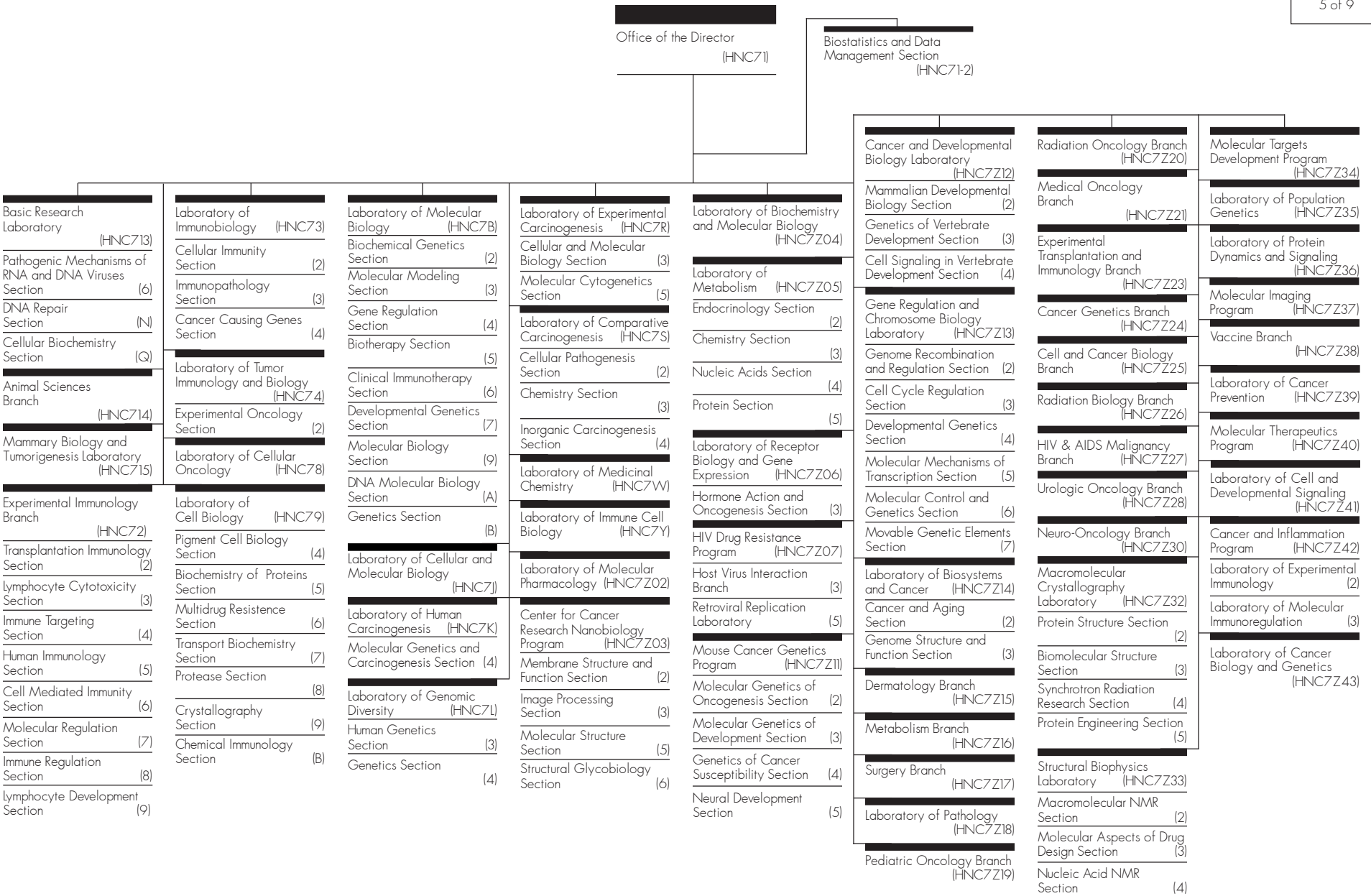
Division of Cancer Prevention



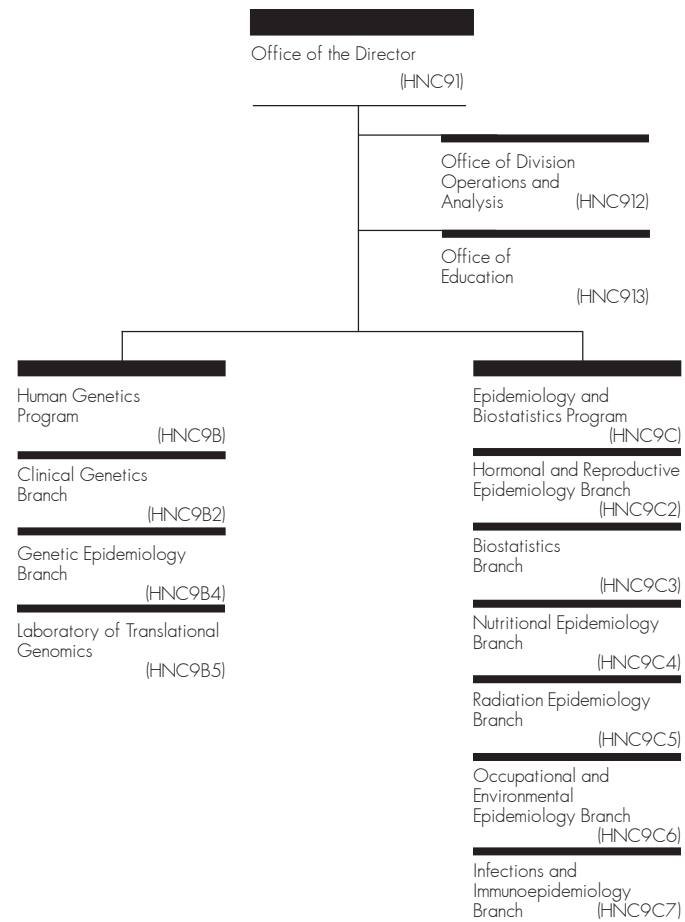
Division of Extramural Activities



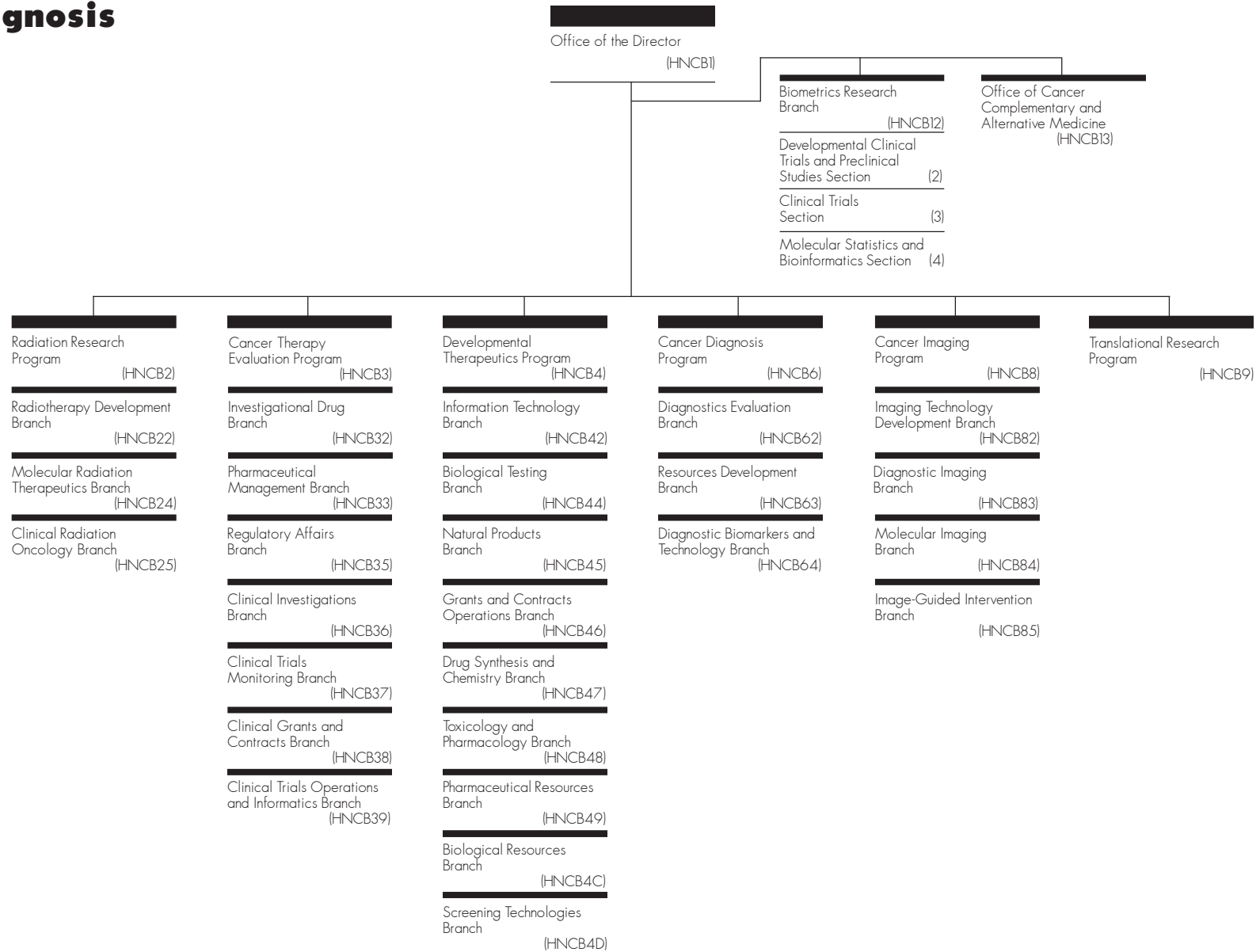
Center for Cancer Research



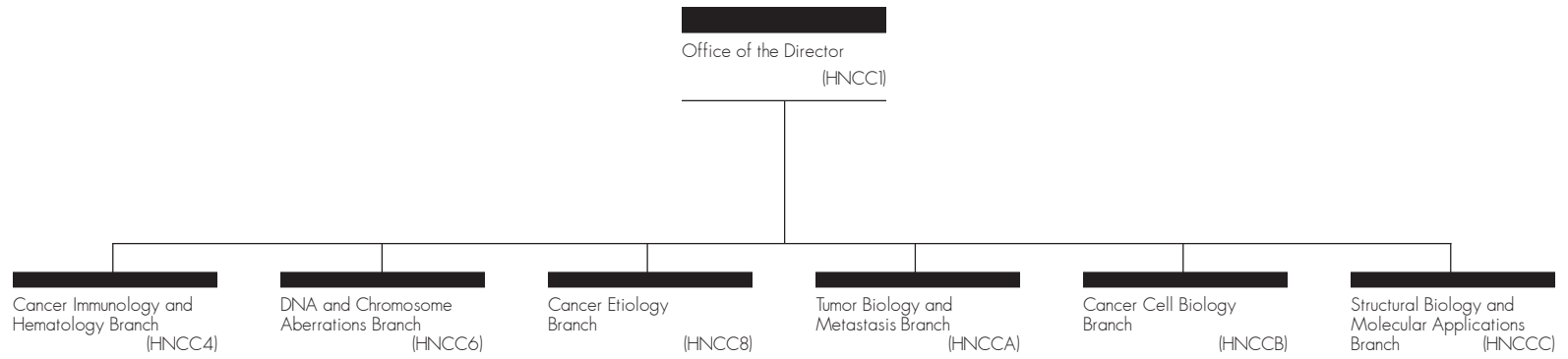
Division of Cancer Epidemiology and Genetics



Division of Cancer Treatment and Diagnosis



Division of Cancer Biology



Division of Cancer Control and Population Sciences

