

CDC's EMERGING INFECTIONS PROGRAM

---

CDC/USDA/FDA Foodborne Diseases Active Surveillance Network (FoodNet)  
FoodNet 2001 Final Report

Population in Bacterial Catchment Areas:	Percent
California*.....	3,169,290 9.2%
Colorado*.....	2,109,282 6.1%
Connecticut.....	3,405,565 9.9%
Georgia.....	8,186,453 23.8%
Maryland*.....	4,187,287 12.2%
Minnesota.....	4,919,479 14.3%
New York*.....	2,109,694 6.1%
Oregon.....	3,421,399 10.0%
Tennessee*.....	2,818,711 8.2%
Total.....	34,327,160 100.0%

Population in Parasitic Catchment Areas:	Percent
California*.....	6,659,481 17.6%
Colorado*.....	2,109,282 5.6%
Connecticut.....	3,405,565 9.0%
Georgia.....	8,186,453 21.6%
Maryland*.....	4,187,287 11.1%
Minnesota.....	4,919,479 13.0%
New York*.....	2,109,694 5.6%
Oregon.....	3,421,399 9.0%
Tennessee*.....	2,818,711 7.5%
Total.....	37,817,351 100.0%

United States Population: 281,421,906

\* Selected Counties

CDC's Emerging Infections Program (FoodNet)  
FoodNet 2001 Final Report  
Table 1a - Percent Site by Pathogen

		Site									Total
		Ca.	Co.	Ct.	Ga.	Md.	Mn.	NY.	Or.	Tn.	
Pathogen											
CAMPYLOBACTER	Cases	999	343	495	614	300	954	248	586	212	4751
	Percent	21.0	7.2	10.4	12.9	6.3	20.1	5.2	12.3	4.5	100.0
CRYPTOSPORIDIUM	Cases	60	14	17	159	29	198	15	56	27	575
	Percent	10.4	2.4	3.0	27.7	5.0	34.4	2.6	9.7	4.7	100.0
CYCLOSPORA	Cases	-	-	4	28	-	-	-	-	-	32
	Percent	-	-	12.5	87.5	-	-	-	-	-	100.0
E. COLI O157	Cases	36	37	39	50	16	232	31	77	42	560
	Percent	6.4	6.6	7.0	8.9	2.9	41.4	5.5	13.8	7.5	100.0
LISTERIA	Cases	16	5	15	16	14	4	7	12	5	94
	Percent	17.0	5.3	16.0	17.0	14.9	4.3	7.4	12.8	5.3	100.0
SALMONELLA	Cases	480	317	454	1675	622	693	271	290	438	5240
	Percent	9.2	6.0	8.7	32.0	11.9	13.2	5.2	5.5	8.4	100.0
SHIGELLA	Cases	427	144	60	714	141	493	28	112	100	2219
	Percent	19.2	6.5	2.7	32.2	6.4	22.2	1.3	5.0	4.5	100.0
STEC NONO157	Cases	-	4	24	4	-	24	-	5	-	61
	Percent	-	6.6	39.3	6.6	-	39.3	-	8.2	-	100.0
VIBRIO	Cases	16	5	9	24	13	3	2	5	2	79
	Percent	20.3	6.3	11.4	30.4	16.5	3.8	2.5	6.3	2.5	100.0
YERSINIA	Cases	17	9	9	50	12	19	6	12	10	144
	Percent	11.8	6.3	6.3	34.7	8.3	13.2	4.2	8.3	6.9	100.0
Total	Cases	2051	878	1126	3334	1147	2620	608	1155	836	13755
	Percent	14.9	6.4	8.2	24.2	8.3	19.0	4.4	8.4	6.1	100.0

CDC's Emerging Infections Program (FoodNet)  
 FoodNet 2001 Final Report  
 Table 1b - Percent Pathogen by Site

		Pathogen										Total
		CAMPY- LOBAC- TER	CRYPT- OSPOR- IDIUM	CYCLO- SPORA	E. COLI O157	LISTE- RIA	SALMO- NELLA	SHIGE- LLA	STEC NONO1- 57	VIBRIO	YERSI- NIA	
Site												
Ca.	Cases	999	60	-	36	16	480	427	-	16	17	2051
	Percent	48.7	2.9	-	1.8	0.8	23.4	20.8	-	0.8	0.8	100.0
Co.	Cases	343	14	-	37	5	317	144	4	5	9	878
	Percent	39.1	1.6	-	4.2	0.6	36.1	16.4	0.5	0.6	1.0	100.0
Ct.	Cases	495	17	4	39	15	454	60	24	9	9	1126
	Percent	44.0	1.5	0.4	3.5	1.3	40.3	5.3	2.1	0.8	0.8	100.0
Ga.	Cases	614	159	28	50	16	1675	714	4	24	50	3334
	Percent	18.4	4.8	0.8	1.5	0.5	50.2	21.4	0.1	0.7	1.5	100.0
Md.	Cases	300	29	-	16	14	622	141	-	13	12	1147
	Percent	26.2	2.5	-	1.4	1.2	54.2	12.3	-	1.1	1.0	100.0
Mn.	Cases	954	198	-	232	4	693	493	24	3	19	2620
	Percent	36.4	7.6	-	8.9	0.2	26.5	18.8	0.9	0.1	0.7	100.0
NY.	Cases	248	15	-	31	7	271	28	-	2	6	608
	Percent	40.8	2.5	-	5.1	1.2	44.6	4.6	-	0.3	1.0	100.0
Or.	Cases	586	56	-	77	12	290	112	5	5	12	1155
	Percent	50.7	4.8	-	6.7	1.0	25.1	9.7	0.4	0.4	1.0	100.0
Tn.	Cases	212	27	-	42	5	438	100	-	2	10	836
	Percent	25.4	3.2	-	5.0	0.6	52.4	12.0	-	0.2	1.2	100.0
Total	Cases	4751	575	32	560	94	5240	2219	61	79	144	13755
	Percent	34.5	4.2	0.2	4.1	0.7	38.1	16.1	0.4	0.6	1.0	100.0

CDC's Emerging Infections Program (FoodNet)  
 FoodNet 2001 Final Report  
 Table 2a - Cases per 100,000 by Pathogen for All Sites

	Cases per 100,000	Total Cases
Pathogen		
CAMPYLOBACTER	13.8	4751
CRYPTOSPORIDIUM	1.5	575
CYCLOSPORA	0.1	32
E. COLI 0157	1.6	560
LISTERIA	0.3	94
SALMONELLA	15.3	5240
SHIGELLA	6.5	2219
STEC NON0157	0.2	61
VIBRIO	0.2	79
YERSINIA	0.4	144
Total	39.9	13755

CDC's Emerging Infections Program (FoodNet)  
 FoodNet 2001 Final Report  
 Table 2b - Cases per 100,000 by Pathogen by Site

Pathogen	Cases per 100,000								
	Ca.	Co.	Ct.	Ga.	Md.	Mn.	NY.	Or.	Tn.
CAMPYLOBACTER	31.5	16.3	14.5	7.5	7.2	19.4	11.8	17.1	7.5
CRYPTOSPORIDIUM	0.9	0.7	0.5	1.9	0.7	4.0	0.7	1.6	1.0
CYCLOSPORA	-	-	0.1	0.3	-	-	-	-	-
E. COLI 0157	1.1	1.8	1.1	0.6	0.4	4.7	1.5	2.3	1.5
LISTERIA	0.5	0.2	0.4	0.2	0.3	0.1	0.3	0.4	0.2
SALMONELLA	15.1	15.0	13.3	20.5	14.9	14.1	12.8	8.5	15.5
SHIGELLA	13.5	6.8	1.8	8.7	3.4	10.0	1.3	3.3	3.5
STEC NON0157	-	0.2	0.7	0.0	-	0.5	-	0.1	-
VIBRIO	0.5	0.2	0.3	0.3	0.3	0.1	0.1	0.1	0.1
YERSINIA	0.5	0.4	0.3	0.6	0.3	0.4	0.3	0.4	0.4
Total	63.7	41.6	33.1	40.7	27.4	53.3	28.8	33.8	29.7























CDC's Emerging Infections Program (FoodNet)  
 FoodNet 2001 Final Report  
 Table 4 - Pathogen by Month Collected for All Sites

Cases	Month												Total
	JAN01	FEB01	MAR01	APR01	MAY01	JUN01	JUL01	AUG01	SEP01	OCT01	NOV01	DEC01	
Pathogen													
CAMPYLOBACTER	298	274	339	383	392	566	630	550	382	363	314	260	4751
CRYPTOSPORIDIUM	36	40	32	35	25	40	50	103	83	68	33	30	575
CYCLOSPORA	0	2	1	2	2	6	5	2	1	7	4	0	32
E. COLI 0157	17	13	14	26	39	60	76	99	82	73	28	33	560
LISTERIA	8	7	8	8	5	5	2	12	17	6	10	6	94
SALMONELLA	306	212	253	375	421	495	683	716	599	461	352	367	5240
SHIGELLA	167	118	133	137	139	160	175	231	149	244	265	301	2219
STEC NON0157	2	2	4	6	3	8	9	15	5	2	3	2	61
VIBRIO	2	1	4	3	3	6	18	28	7	5	1	1	79
YERSINIA	18	13	8	4	8	10	12	11	6	5	9	40	144
Total	854	682	796	979	1037	1356	1660	1767	1331	1234	1019	1040	13755



CDC's Emerging Infections Program (FoodNet)  
 FoodNet 2001 Final Report  
 Tables 4a through 4i - Pathogen by Month Collected by Site

Table 4a: Site = California

Cases	Month												Total
	JAN01	FEB01	MAR01	APR01	MAY01	JUN01	JUL01	AUG01	SEP01	OCT01	NOV01	DEC01	
Pathogen													
CAMPYLOBACTER	98	75	78	81	84	102	111	97	71	82	66	54	999
CRYPTOSPORIDIUM	5	7	6	8	1	1	6	3	6	7	3	7	60
CYCLOSPORA	-	-	-	-	-	-	-	-	-	-	-	-	-
E. COLI O157	2	-	-	-	2	2	10	12	1	3	3	1	36
LISTERIA	3	2	1	-	2	-	-	1	1	-	2	4	16
SALMONELLA	30	18	29	42	39	52	48	68	40	41	37	36	480
SHIGELLA	42	40	33	37	39	44	50	50	25	23	18	26	427
STEC NONO157	-	-	-	-	-	-	-	-	-	-	-	-	-
VIBRIO	1	-	-	-	1	-	3	8	1	2	-	-	16
YERSINIA	5	1	-	1	1	2	1	3	-	1	1	1	17
Total	186	143	147	169	169	203	229	242	145	159	130	129	2051

CDC's Emerging Infections Program (FoodNet)  
 FoodNet 2001 Final Report  
 Tables 4a through 4i - Pathogen by Month Collected by Site

Table 4b: Site = Colorado

Cases	Month												Total
	JAN01	FEB01	MAR01	APR01	MAY01	JUN01	JUL01	AUG01	SEP01	OCT01	NOV01	DEC01	
Pathogen													
CAMPYLOBACTER	15	13	22	31	32	55	66	39	25	20	14	11	343
CRYPTOSPORIDIUM	2	3	1	1	-	-	1	3	1	-	1	1	14
CYCLOSPORA	-	-	-	-	-	-	-	-	-	-	-	-	-
E. COLI O157	1	1	3	3	1	4	15	3	3	3	-	-	37
LISTERIA	1	-	-	-	1	-	-	2	-	1	-	-	5
SALMONELLA	16	11	24	37	20	24	39	31	36	34	20	25	317
SHIGELLA	3	8	8	13	8	19	24	18	15	17	9	2	144
STEC NONO157	-	-	-	-	1	-	1	2	-	-	-	-	4
VIBRIO	-	-	-	1	-	-	2	1	1	-	-	-	5
YERSINIA	1	-	1	-	1	1	2	3	-	-	-	-	9
Total	39	36	59	86	64	103	150	102	81	75	44	39	878

CDC's Emerging Infections Program (FoodNet)  
 FoodNet 2001 Final Report  
 Tables 4a through 4i - Pathogen by Month Collected by Site

Table 4c: Site = Connecticut

Cases	Month												Total
	JAN01	FEB01	MAR01	APR01	MAY01	JUN01	JUL01	AUG01	SEP01	OCT01	NOV01	DEC01	
Pathogen													
CAMPYLOBACTER	34	19	33	39	42	60	66	56	39	38	38	31	495
CRYPTOSPORIDIUM	2	-	-	1	-	1	4	6	2	-	1	-	17
CYCLOSPORA	-	1	-	-	-	-	2	-	-	-	1	-	4
E. COLI O157	-	2	2	4	2	5	6	6	2	6	3	1	39
LISTERIA	1	1	3	2	1	2	1	-	3	1	-	-	15
SALMONELLA	26	19	36	49	36	39	63	65	37	38	19	27	454
SHIGELLA	5	2	4	5	3	3	3	12	3	6	6	8	60
STEC NONO157	-	1	3	3	1	4	3	3	1	2	2	1	24
VIBRIO	-	-	3	-	1	-	4	1	-	-	-	-	9
YERSINIA	3	-	-	-	1	-	1	1	1	-	1	1	9
Total	71	45	84	103	87	114	153	150	88	91	71	69	1126

CDC's Emerging Infections Program (FoodNet)  
 FoodNet 2001 Final Report  
 Tables 4a through 4i - Pathogen by Month Collected by Site

Table 4d: Site = Georgia

Cases	Month												Total
	JAN01	FEB01	MAR01	APR01	MAY01	JUN01	JUL01	AUG01	SEP01	OCT01	NOV01	DEC01	
Pathogen													
CAMPYLOBACTER	33	40	53	44	47	84	82	84	47	37	31	32	614
CRYPTOSPORIDIUM	10	12	6	9	9	11	16	27	20	22	8	9	159
CYCLOSPORA	-	1	1	2	2	6	3	2	1	7	3	-	28
E. COLI O157	2	2	-	3	3	8	4	5	5	12	5	1	50
LISTERIA	1	1	2	2	-	1	-	2	2	-	4	1	16
SALMONELLA	95	47	52	81	94	171	233	234	238	183	127	120	1675
SHIGELLA	16	20	23	19	18	18	28	45	60	113	171	183	714
STEC NONO157	-	1	1	-	-	-	1	-	-	-	1	-	4
VIBRIO	-	-	1	1	-	4	2	10	2	3	-	1	24
YERSINIA	6	3	3	-	1	2	1	-	1	1	3	29	50
Total	163	127	142	161	174	305	370	409	376	378	353	376	3334

CDC's Emerging Infections Program (FoodNet)  
 FoodNet 2001 Final Report  
 Tables 4a through 4i - Pathogen by Month Collected by Site

Table 4e: Site = Maryland

Cases	Month												Total
	JAN01	FEB01	MAR01	APR01	MAY01	JUN01	JUL01	AUG01	SEP01	OCT01	NOV01	DEC01	
Pathogen													
CAMPYLOBACTER	14	7	14	30	21	36	51	36	24	20	27	20	300
CRYPTOSPORIDIUM	3	5	2	4	2	-	1	1	3	4	3	1	29
CYCLOSPORA	-	-	-	-	-	-	-	-	-	-	-	-	-
E. COLI O157	-	-	2	1	-	2	3	6	2	-	-	-	16
LISTERIA	-	-	1	1	-	1	1	5	2	1	2	-	14
SALMONELLA	51	31	21	54	45	70	86	80	55	42	51	36	622
SHIGELLA	4	6	8	9	7	10	17	27	12	10	8	23	141
STEC NONO157	-	-	-	-	-	-	-	-	-	-	-	-	-
VIBRIO	-	-	-	-	-	1	5	5	1	-	1	-	13
YERSINIA	1	2	-	1	1	2	2	-	2	-	-	1	12
Total	73	51	48	100	76	122	166	160	101	77	92	81	1147

CDC's Emerging Infections Program (FoodNet)  
 FoodNet 2001 Final Report  
 Tables 4a through 4i - Pathogen by Month Collected by Site

Table 4f: Site = Minnesota

Cases	Month												Total
	JAN01	FEB01	MAR01	APR01	MAY01	JUN01	JUL01	AUG01	SEP01	OCT01	NOV01	DEC01	
Pathogen													
CAMPYLOBACTER	48	56	69	73	72	92	122	124	94	81	71	52	954
CRYPTOSPORIDIUM	8	9	14	8	7	21	14	49	31	21	10	6	198
CYCLOSPORA	-	-	-	-	-	-	-	-	-	-	-	-	-
E. COLI O157	3	5	3	8	17	29	28	43	40	38	7	11	232
LISTERIA	-	-	-	-	-	-	-	-	3	-	1	-	4
SALMONELLA	36	43	46	47	89	67	88	91	63	44	33	46	693
SHIGELLA	73	32	42	39	39	41	30	63	16	48	27	43	493
STEC NONO157	2	-	-	2	-	3	4	9	3	-	-	1	24
VIBRIO	-	1	-	1	-	1	-	-	-	-	-	-	3
YERSINIA	-	4	3	-	-	1	3	2	1	2	2	1	19
Total	170	150	177	178	224	255	289	381	251	234	151	160	2620

CDC's Emerging Infections Program (FoodNet)  
 FoodNet 2001 Final Report  
 Tables 4a through 4i - Pathogen by Month Collected by Site

Table 4g: Site = New York

Cases	Month												Total
	JAN01	FEB01	MAR01	APR01	MAY01	JUN01	JUL01	AUG01	SEP01	OCT01	NOV01	DEC01	
Pathogen													
CAMPYLOBACTER	8	10	14	19	21	34	36	28	18	27	17	16	248
CRYPTOSPORIDIUM	-	-	-	2	1	2	1	2	3	2	2	-	15
CYCLOSPORA	-	-	-	-	-	-	-	-	-	-	-	-	-
E. COLI O157	6	-	-	2	6	-	2	7	4	3	1	-	31
LISTERIA	-	1	-	2	1	1	-	-	-	1	-	1	7
SALMONELLA	12	10	14	19	28	24	38	42	39	18	14	13	271
SHIGELLA	3	1	1	4	4	3	-	1	1	7	1	2	28
STEC NONO157	-	-	-	-	-	-	-	-	-	-	-	-	-
VIBRIO	-	-	-	-	-	-	-	2	-	-	-	-	2
YERSINIA	-	-	1	-	1	-	-	-	1	1	-	2	6
Total	29	22	30	48	62	64	77	82	66	59	35	34	608

CDC's Emerging Infections Program (FoodNet)  
 FoodNet 2001 Final Report  
 Tables 4a through 4i - Pathogen by Month Collected by Site

Table 4h: Site = Oregon

Cases	Month												Total
	JAN01	FEB01	MAR01	APR01	MAY01	JUN01	JUL01	AUG01	SEP01	OCT01	NOV01	DEC01	
Pathogen													
CAMPYLOBACTER	38	44	45	56	55	70	62	56	45	39	41	35	586
CRYPTOSPORIDIUM	4	3	2	1	4	2	3	9	13	10	3	2	56
CYCLOSPORA	-	-	-	-	-	-	-	-	-	-	-	-	-
E. COLI O157	1	1	2	2	7	5	4	15	20	3	3	14	77
LISTERIA	1	1	1	1	-	-	-	2	4	2	-	-	12
SALMONELLA	20	14	13	24	32	29	38	32	24	23	18	23	290
SHIGELLA	11	5	8	5	12	9	15	10	9	10	10	8	112
STEC NONO157	-	-	-	1	1	1	-	1	1	-	-	-	5
VIBRIO	-	-	-	-	-	-	2	1	2	-	-	-	5
YERSINIA	1	2	-	1	1	1	1	1	-	-	2	2	12
Total	76	70	71	91	112	117	125	127	118	87	77	84	1155



CDC's Emerging Infections Program (FoodNet)  
 FoodNet 2001 Final Report  
 Tables 4a through 4i - Pathogen by Month Collected by Site

Table 4i: Site = Tennessee

Cases	Month												Total
	JAN01	FEB01	MAR01	APR01	MAY01	JUN01	JUL01	AUG01	SEP01	OCT01	NOV01	DEC01	
Pathogen													
CAMPYLOBACTER	10	10	11	10	18	33	34	30	19	19	9	9	212
CRYPTOSPORIDIUM	2	1	1	1	1	2	4	3	4	2	2	4	27
CYCLOSPORA	-	-	-	-	-	-	-	-	-	-	-	-	-
E. COLI O157	2	2	2	3	1	5	4	2	5	5	6	5	42
LISTERIA	1	1	-	-	-	-	-	-	2	-	1	-	5
SALMONELLA	20	19	18	22	38	19	50	73	67	38	33	41	438
SHIGELLA	10	4	6	6	9	13	8	5	8	10	15	6	100
STEC NONO157	-	-	-	-	-	-	-	-	-	-	-	-	-
VIBRIO	1	-	-	-	1	-	-	-	-	-	-	-	2
YERSINIA	1	1	-	1	1	1	1	1	-	-	-	3	10
Total	47	38	38	43	69	73	101	114	105	74	66	68	836

CDC's Emerging Infections Program (FoodNet)  
FoodNet 2001 Final Report  
Table 5 - Age Distribution by Pathogen for All Sites

		Age Specific Strata									Total
		0-<1 YR	1-<10 YRS	10-<20 YRS	20-<30 YRS	30-<40 YRS	40-<50 YRS	50-<60 YRS	60+ YRS	UNKNWN	
Pathogen											
CAMPYLOBACTER	Cases	151	696	430	717	893	798	524	533	9	4751
	Percent	3.2	14.6	9.1	15.1	18.8	16.8	11.0	11.2	0.2	100.0
CRYPTOSPORIDIUM	Cases	19	140	69	61	143	86	24	31	2	575
	Percent	3.3	24.3	12.0	10.6	24.9	15.0	4.2	5.4	0.3	100.0
CYCLOSPORA	Cases	0	0	3	17	2	3	4	2	1	32
	Percent	0	0	9.4	53.1	6.3	9.4	12.5	6.3	3.1	100.0
E. COLI 0157	Cases	9	215	92	56	48	37	44	56	3	560
	Percent	1.6	38.4	16.4	10.0	8.6	6.6	7.9	10.0	0.5	100.0
LISTERIA	Cases	10	2	2	4	10	3	7	56	0	94
	Percent	10.6	2.1	2.1	4.3	10.6	3.2	7.4	59.6	0	100.0
SALMONELLA	Cases	667	1445	542	536	578	477	322	627	46	5240
	Percent	12.7	27.6	10.3	10.2	11.0	9.1	6.1	12.0	0.9	100.0
SHIGELLA	Cases	42	968	145	278	404	214	102	61	5	2219
	Percent	1.9	43.6	6.5	12.5	18.2	9.6	4.6	2.7	0.2	100.0
STEC NON0157	Cases	1	24	14	8	6	2	1	5	0	61
	Percent	1.6	39.3	23.0	13.1	9.8	3.3	1.6	8.2	0	100.0
VIBRIO	Cases	2	4	1	7	13	16	12	24	0	79
	Percent	2.5	5.1	1.3	8.9	16.5	20.3	15.2	30.4	0	100.0
YERSINIA	Cases	53	28	7	8	13	12	7	15	1	144
	Percent	36.8	19.4	4.9	5.6	9.0	8.3	4.9	10.4	0.7	100.0
Total	Cases	954	3522	1305	1692	2110	1648	1047	1410	67	13755
	Percent	6.9	25.6	9.5	12.3	15.3	12.0	7.6	10.3	0.5	100.0

CDC's Emerging Infections Program (FoodNet)  
FoodNet 2001 Final Report  
Tables 5a through 5i - Age Distribution by Pathogen by Site

Table 5a: Site = California		Age Specific Strata									Total
		0-<1 YR	1-<10 YRS	10-<20 YRS	20-<30 YRS	30-<40 YRS	40-<50 YRS	50-<60 YRS	60+ YRS	UNKNWN	
Pathogen											
CAMPYLOBACTER	Cases	18	128	71	180	239	157	96	110	-	999
	Percent	1.8	12.8	7.1	18.0	23.9	15.7	9.6	11.0	0.0	100.0
CRYPTOSPORIDIUM	Cases	-	2	-	1	34	17	3	3	-	60
	Percent	0.0	3.3	0.0	1.7	56.7	28.3	5.0	5.0	0.0	100.0
CYCLOSPORA	Cases	-	-	-	-	-	-	-	-	-	-
	Percent	-	-	-	-	-	-	-	-	-	-
E. COLI O157	Cases	1	24	3	2	2	1	2	1	-	36
	Percent	2.8	66.7	8.3	5.6	5.6	2.8	5.6	2.8	0.0	100.0
LISTERIA	Cases	2	-	1	1	4	-	2	6	-	16
	Percent	12.5	0.0	6.3	6.3	25.0	0.0	12.5	37.5	0.0	100.0
SALMONELLA	Cases	33	130	47	59	70	51	28	61	1	480
	Percent	6.9	27.1	9.8	12.3	14.6	10.6	5.8	12.7	0.2	100.0
SHIGELLA	Cases	1	71	18	62	153	82	26	14	-	427
	Percent	0.2	16.6	4.2	14.5	35.8	19.2	6.1	3.3	0.0	100.0
STEC NONO157	Cases	-	-	-	-	-	-	-	-	-	-
	Percent	-	-	-	-	-	-	-	-	-	-
VIBRIO	Cases	-	1	-	1	4	4	1	5	-	16
	Percent	0.0	6.3	0.0	6.3	25.0	25.0	6.3	31.3	0.0	100.0
YERSINIA	Cases	2	5	2	-	3	2	1	2	-	17
	Percent	11.8	29.4	11.8	0.0	17.6	11.8	5.9	11.8	0.0	100.0
Total	Cases	57	361	142	306	509	314	159	202	1	2051
	Percent	2.8	17.6	6.9	14.9	24.8	15.3	7.8	9.8	0.0	100.0

CDC's Emerging Infections Program (FoodNet)  
FoodNet 2001 Final Report  
Tables 5a through 5i - Age Distribution by Pathogen by Site

Table 5b: Site = Colorado		Age Specific Strata									Total
		0-<1 YR	1-<10 YRS	10-<20 YRS	20-<30 YRS	30-<40 YRS	40-<50 YRS	50-<60 YRS	60+ YRS	UNKNWN	
Pathogen											
CAMPYLOBACTER	Cases	11	41	28	52	69	60	36	45	1	343
	Percent	3.2	12.0	8.2	15.2	20.1	17.5	10.5	13.1	0.3	100.0
CRYPTOSPORIDIUM	Cases	1	1	2	1	3	5	1	-	-	14
	Percent	7.1	7.1	14.3	7.1	21.4	35.7	7.1	0.0	0.0	100.0
CYCLOSPORA	Cases	-	-	-	-	-	-	-	-	-	-
	Percent	-	-	-	-	-	-	-	-	-	-
E. COLI O157	Cases	-	11	5	3	6	4	1	7	-	37
	Percent	0.0	29.7	13.5	8.1	16.2	10.8	2.7	18.9	0.0	100.0
LISTERIA	Cases	-	-	-	-	1	1	-	3	-	5
	Percent	0.0	0.0	0.0	0.0	20.0	20.0	0.0	60.0	0.0	100.0
SALMONELLA	Cases	22	77	38	56	44	32	19	27	2	317
	Percent	6.9	24.3	12.0	17.7	13.9	10.1	6.0	8.5	0.6	100.0
SHIGELLA	Cases	1	49	7	21	36	17	9	4	-	144
	Percent	0.7	34.0	4.9	14.6	25.0	11.8	6.3	2.8	0.0	100.0
STEC NONO157	Cases	-	2	1	-	-	-	-	1	-	4
	Percent	0.0	50.0	25.0	0.0	0.0	0.0	0.0	25.0	0.0	100.0
VIBRIO	Cases	-	-	-	-	1	2	-	2	-	5
	Percent	0.0	0.0	0.0	0.0	20.0	40.0	0.0	40.0	0.0	100.0
YERSINIA	Cases	3	2	1	-	2	-	-	1	-	9
	Percent	33.3	22.2	11.1	0.0	22.2	0.0	0.0	11.1	0.0	100.0
Total	Cases	38	183	82	133	162	121	66	90	3	878
	Percent	4.3	20.8	9.3	15.1	18.5	13.8	7.5	10.3	0.3	100.0

CDC's Emerging Infections Program (FoodNet)  
FoodNet 2001 Final Report  
Tables 5a through 5i - Age Distribution by Pathogen by Site

Table 5c: Site = Connecticut		Age Specific Strata									Total
		0-<1 YR	1-<10 YRS	10-<20 YRS	20-<30 YRS	30-<40 YRS	40-<50 YRS	50-<60 YRS	60+ YRS	UNKNWN	
Pathogen											
CAMPYLOBACTER	Cases	12	61	44	54	94	97	67	66	-	495
	Percent	2.4	12.3	8.9	10.9	19.0	19.6	13.5	13.3	0.0	100.0
CRYPTOSPORIDIUM	Cases	-	6	3	3	2	2	1	-	-	17
	Percent	0.0	35.3	17.6	17.6	11.8	11.8	5.9	0.0	0.0	100.0
CYCLOSPORA	Cases	-	-	-	1	-	-	2	1	-	4
	Percent	0.0	0.0	0.0	25.0	0.0	0.0	50.0	25.0	0.0	100.0
E. COLI 0157	Cases	-	13	16	3	2	-	3	2	-	39
	Percent	0.0	33.3	41.0	7.7	5.1	0.0	7.7	5.1	0.0	100.0
LISTERIA	Cases	-	-	-	-	-	-	2	13	-	15
	Percent	0.0	0.0	0.0	0.0	0.0	0.0	13.3	86.7	0.0	100.0
SALMONELLA	Cases	29	103	57	50	70	39	34	72	-	454
	Percent	6.4	22.7	12.6	11.0	15.4	8.6	7.5	15.9	0.0	100.0
SHIGELLA	Cases	2	10	8	1	8	11	14	6	-	60
	Percent	3.3	16.7	13.3	1.7	13.3	18.3	23.3	10.0	0.0	100.0
STEC NON0157	Cases	-	6	6	5	5	-	1	1	-	24
	Percent	0.0	25.0	25.0	20.8	20.8	0.0	4.2	4.2	0.0	100.0
VIBRIO	Cases	-	1	-	2	1	1	2	2	-	9
	Percent	0.0	11.1	0.0	22.2	11.1	11.1	22.2	22.2	0.0	100.0
YERSINIA	Cases	2	1	1	-	1	1	-	3	-	9
	Percent	22.2	11.1	11.1	0.0	11.1	11.1	0.0	33.3	0.0	100.0
Total	Cases	45	201	135	119	183	151	126	166	-	1126
	Percent	4.0	17.9	12.0	10.6	16.3	13.4	11.2	14.7	0.0	100.0

CDC's Emerging Infections Program (FoodNet)  
FoodNet 2001 Final Report  
Tables 5a through 5i - Age Distribution by Pathogen by Site

Table 5d: Site = Georgia		Age Specific Strata									Total
		0-<1 YR	1-<10 YRS	10-<20 YRS	20-<30 YRS	30-<40 YRS	40-<50 YRS	50-<60 YRS	60+ YRS	UNKNWN	
Pathogen											
CAMPYLOBACTER	Cases	36	115	54	94	111	83	66	51	4	614
	Percent	5.9	18.7	8.8	15.3	18.1	13.5	10.7	8.3	0.7	100.0
CRYPTOSPORIDIUM	Cases	1	16	12	21	67	24	7	10	1	159
	Percent	0.6	10.1	7.5	13.2	42.1	15.1	4.4	6.3	0.6	100.0
CYCLOSPORA	Cases	-	-	3	16	2	3	2	1	1	28
	Percent	0.0	0.0	10.7	57.1	7.1	10.7	7.1	3.6	3.6	100.0
E. COLI 0157	Cases	-	15	10	10	7	3	2	1	2	50
	Percent	0.0	30.0	20.0	20.0	14.0	6.0	4.0	2.0	4.0	100.0
LISTERIA	Cases	2	2	1	-	-	1	1	9	-	16
	Percent	12.5	12.5	6.3	0.0	0.0	6.3	6.3	56.3	0.0	100.0
SALMONELLA	Cases	365	554	124	100	133	118	67	180	34	1675
	Percent	21.8	33.1	7.4	6.0	7.9	7.0	4.0	10.7	2.0	100.0
SHIGELLA	Cases	16	428	47	81	86	35	8	11	2	714
	Percent	2.2	59.9	6.6	11.3	12.0	4.9	1.1	1.5	0.3	100.0
STEC NON0157	Cases	-	2	1	-	-	1	-	-	-	4
	Percent	0.0	50.0	25.0	0.0	0.0	25.0	0.0	0.0	0.0	100.0
VIBRIO	Cases	2	1	-	2	1	3	5	10	-	24
	Percent	8.3	4.2	0.0	8.3	4.2	12.5	20.8	41.7	0.0	100.0
YERSINIA	Cases	33	10	1	-	2	1	1	2	-	50
	Percent	66.0	20.0	2.0	0.0	4.0	2.0	2.0	4.0	0.0	100.0
Total	Cases	455	1143	253	324	409	272	159	275	44	3334
	Percent	13.6	34.3	7.6	9.7	12.3	8.2	4.8	8.2	1.3	100.0

CDC's Emerging Infections Program (FoodNet)  
FoodNet 2001 Final Report  
Tables 5a through 5i - Age Distribution by Pathogen by Site

Table 5e: Site = Maryland		Age Specific Strata									Total
		0-<1 YR	1-<10 YRS	10-<20 YRS	20-<30 YRS	30-<40 YRS	40-<50 YRS	50-<60 YRS	60+ YRS	UNKNWN	
Pathogen											
CAMPYLOBACTER	Cases	5	38	34	41	57	39	40	43	3	300
	Percent	1.7	12.7	11.3	13.7	19.0	13.0	13.3	14.3	1.0	100.0
CRYPTOSPORIDIUM	Cases	2	-	3	5	10	4	2	2	1	29
	Percent	6.9	0.0	10.3	17.2	34.5	13.8	6.9	6.9	3.4	100.0
CYCLOSPORA	Cases	-	-	-	-	-	-	-	-	-	-
	Percent	-	-	-	-	-	-	-	-	-	-
E. COLI 0157	Cases	-	4	1	1	5	2	1	2	-	16
	Percent	0.0	25.0	6.3	6.3	31.3	12.5	6.3	12.5	0.0	100.0
LISTERIA	Cases	1	-	-	1	3	-	-	9	-	14
	Percent	7.1	0.0	0.0	7.1	21.4	0.0	0.0	64.3	0.0	100.0
SALMONELLA	Cases	68	177	73	64	70	69	44	52	5	622
	Percent	10.9	28.5	11.7	10.3	11.3	11.1	7.1	8.4	0.8	100.0
SHIGELLA	Cases	5	57	12	17	20	17	6	4	3	141
	Percent	3.5	40.4	8.5	12.1	14.2	12.1	4.3	2.8	2.1	100.0
STEC NON0157	Cases	-	-	-	-	-	-	-	-	-	-
	Percent	-	-	-	-	-	-	-	-	-	-
VIBRIO	Cases	-	1	-	1	5	2	1	3	-	13
	Percent	0.0	7.7	0.0	7.7	38.5	15.4	7.7	23.1	0.0	100.0
YERSINIA	Cases	3	4	-	2	2	-	-	-	1	12
	Percent	25.0	33.3	0.0	16.7	16.7	0.0	0.0	0.0	8.3	100.0
Total	Cases	84	281	123	132	172	133	94	115	13	1147
	Percent	7.3	24.5	10.7	11.5	15.0	11.6	8.2	10.0	1.1	100.0

CDC's Emerging Infections Program (FoodNet)  
FoodNet 2001 Final Report  
Tables 5a through 5i - Age Distribution by Pathogen by Site

Table 5f: Site = Minnesota		Age Specific Strata									Total
		0-<1 YR	1-<10 YRS	10-<20 YRS	20-<30 YRS	30-<40 YRS	40-<50 YRS	50-<60 YRS	60+ YRS	UNKNWN	
Pathogen											
CAMPYLOBACTER	Cases	29	155	120	132	154	178	95	91	-	954
	Percent	3.0	16.2	12.6	13.8	16.1	18.7	10.0	9.5	0.0	100.0
CRYPTOSPORIDIUM	Cases	12	93	30	22	13	15	5	8	-	198
	Percent	6.1	47.0	15.2	11.1	6.6	7.6	2.5	4.0	0.0	100.0
CYCLOSPORA	Cases	-	-	-	-	-	-	-	-	-	-
	Percent	-	-	-	-	-	-	-	-	-	-
E. COLI 0157	Cases	2	97	36	23	18	13	16	27	-	232
	Percent	0.9	41.8	15.5	9.9	7.8	5.6	6.9	11.6	0.0	100.0
LISTERIA	Cases	-	-	-	-	-	-	-	4	-	4
	Percent	0.0	0.0	0.0	0.0	0.0	0.0	0.0	100.0	0.0	100.0
SALMONELLA	Cases	39	136	88	89	89	90	56	106	-	693
	Percent	5.6	19.6	12.7	12.8	12.8	13.0	8.1	15.3	0.0	100.0
SHIGELLA	Cases	8	242	33	61	75	34	25	15	-	493
	Percent	1.6	49.1	6.7	12.4	15.2	6.9	5.1	3.0	0.0	100.0
STEC NON0157	Cases	1	11	4	3	1	1	-	3	-	24
	Percent	4.2	45.8	16.7	12.5	4.2	4.2	0.0	12.5	0.0	100.0
VIBRIO	Cases	-	-	-	-	-	1	2	-	-	3
	Percent	0.0	0.0	0.0	0.0	0.0	33.3	66.7	0.0	0.0	100.0
YERSINIA	Cases	1	3	1	4	1	4	3	2	-	19
	Percent	5.3	15.8	5.3	21.1	5.3	21.1	15.8	10.5	0.0	100.0
Total	Cases	92	737	312	334	351	336	202	256	-	2620
	Percent	3.5	28.1	11.9	12.7	13.4	12.8	7.7	9.8	0.0	100.0



CDC's Emerging Infections Program (FoodNet)  
FoodNet 2001 Final Report  
Tables 5a through 5i - Age Distribution by Pathogen by Site

Table 5g: Site = New York		Age Specific Strata									Total
		0-<1 YR	1-<10 YRS	10-<20 YRS	20-<30 YRS	30-<40 YRS	40-<50 YRS	50-<60 YRS	60+ YRS	UNKNWN	
Pathogen											
CAMPYLOBACTER	Cases	11	23	18	44	46	41	32	33	-	248
	Percent	4.4	9.3	7.3	17.7	18.5	16.5	12.9	13.3	0.0	100.0
CRYPTOSPORIDIUM	Cases	-	5	3	3	3	1	-	-	-	15
	Percent	0.0	33.3	20.0	20.0	20.0	6.7	0.0	0.0	0.0	100.0
CYCLOSPORA	Cases	-	-	-	-	-	-	-	-	-	-
	Percent	-	-	-	-	-	-	-	-	-	-
E. COLI 0157	Cases	-	8	4	4	3	3	5	4	-	31
	Percent	0.0	25.8	12.9	12.9	9.7	9.7	16.1	12.9	0.0	100.0
LISTERIA	Cases	1	-	-	-	-	-	1	5	-	7
	Percent	14.3	0.0	0.0	0.0	0.0	0.0	14.3	71.4	0.0	100.0
SALMONELLA	Cases	14	61	23	39	38	26	28	42	-	271
	Percent	5.2	22.5	8.5	14.4	14.0	9.6	10.3	15.5	0.0	100.0
SHIGELLA	Cases	2	6	3	5	5	2	3	2	-	28
	Percent	7.1	21.4	10.7	17.9	17.9	7.1	10.7	7.1	0.0	100.0
STEC NON0157	Cases	-	-	-	-	-	-	-	-	-	-
	Percent	-	-	-	-	-	-	-	-	-	-
VIBRIO	Cases	-	-	-	-	1	-	1	-	-	2
	Percent	0.0	0.0	0.0	0.0	50.0	0.0	50.0	0.0	0.0	100.0
YERSINIA	Cases	2	-	-	1	1	1	-	1	-	6
	Percent	33.3	0.0	0.0	16.7	16.7	16.7	0.0	16.7	0.0	100.0
Total	Cases	30	103	51	96	97	74	70	87	-	608
	Percent	4.9	16.9	8.4	15.8	16.0	12.2	11.5	14.3	0.0	100.0

CDC's Emerging Infections Program (FoodNet)  
 FoodNet 2001 Final Report  
 Tables 5a through 5i - Age Distribution by Pathogen by Site

Table 5h: Site = Oregon		Age Specific Strata									Total
		0-<1 YR	1-<10 YRS	10-<20 YRS	20-<30 YRS	30-<40 YRS	40-<50 YRS	50-<60 YRS	60+ YRS	UNKNWN	
Pathogen											
CAMPYLOBACTER	Cases	20	89	42	97	93	100	74	70	1	586
	Percent	3.4	15.2	7.2	16.6	15.9	17.1	12.6	11.9	0.2	100.0
CRYPTOSPORIDIUM	Cases	2	12	13	5	9	12	2	1	-	56
	Percent	3.6	21.4	23.2	8.9	16.1	21.4	3.6	1.8	0.0	100.0
CYCLOSPORA	Cases	-	-	-	-	-	-	-	-	-	-
	Percent	-	-	-	-	-	-	-	-	-	-
E. COLI O157	Cases	2	30	8	3	3	10	10	11	-	77
	Percent	2.6	39.0	10.4	3.9	3.9	13.0	13.0	14.3	0.0	100.0
LISTERIA	Cases	3	-	-	1	1	1	1	5	-	12
	Percent	25.0	0.0	0.0	8.3	8.3	8.3	8.3	41.7	0.0	100.0
SALMONELLA	Cases	18	58	47	50	29	21	22	42	3	290
	Percent	6.2	20.0	16.2	17.2	10.0	7.2	7.6	14.5	1.0	100.0
SHIGELLA	Cases	5	45	10	17	12	9	9	5	-	112
	Percent	4.5	40.2	8.9	15.2	10.7	8.0	8.0	4.5	0.0	100.0
STEC NONO157	Cases	-	3	2	-	-	-	-	-	-	5
	Percent	0.0	60.0	40.0	0.0	0.0	0.0	0.0	0.0	0.0	100.0
VIBRIO	Cases	-	-	1	-	-	2	-	2	-	5
	Percent	0.0	0.0	20.0	0.0	0.0	40.0	0.0	40.0	0.0	100.0
YERSINIA	Cases	-	1	1	1	1	3	2	3	-	12
	Percent	0.0	8.3	8.3	8.3	8.3	25.0	16.7	25.0	0.0	100.0
Total	Cases	50	238	124	174	148	158	120	139	4	1155
	Percent	4.3	20.6	10.7	15.1	12.8	13.7	10.4	12.0	0.3	100.0

CDC's Emerging Infections Program (FoodNet)  
FoodNet 2001 Final Report  
Tables 5a through 5i - Age Distribution by Pathogen by Site

Table 5i: Site = Tennessee		Age Specific Strata									Total
		0-<1 YR	1-<10 YRS	10-<20 YRS	20-<30 YRS	30-<40 YRS	40-<50 YRS	50-<60 YRS	60+ YRS	UNKNWN	
Pathogen											
CAMPYLOBACTER	Cases	9	46	19	23	30	43	18	24	-	212
	Percent	4.2	21.7	9.0	10.8	14.2	20.3	8.5	11.3	0.0	100.0
CRYPTOSPORIDIUM	Cases	1	5	3	-	2	6	3	7	-	27
	Percent	3.7	18.5	11.1	0.0	7.4	22.2	11.1	25.9	0.0	100.0
CYCLOSPORA	Cases	-	-	-	-	-	-	-	-	-	-
	Percent	-	-	-	-	-	-	-	-	-	-
E. COLI O157	Cases	4	13	9	7	2	1	4	1	1	42
	Percent	9.5	31.0	21.4	16.7	4.8	2.4	9.5	2.4	2.4	100.0
LISTERIA	Cases	1	-	-	1	1	-	-	2	-	5
	Percent	20.0	0.0	0.0	20.0	20.0	0.0	0.0	40.0	0.0	100.0
SALMONELLA	Cases	79	149	45	29	35	31	24	45	1	438
	Percent	18.0	34.0	10.3	6.6	8.0	7.1	5.5	10.3	0.2	100.0
SHIGELLA	Cases	2	60	7	13	9	7	2	-	-	100
	Percent	2.0	60.0	7.0	13.0	9.0	7.0	2.0	0.0	0.0	100.0
STEC NONO157	Cases	-	-	-	-	-	-	-	-	-	-
	Percent	-	-	-	-	-	-	-	-	-	-
VIBRIO	Cases	-	-	-	1	-	1	-	-	-	2
	Percent	0.0	0.0	0.0	50.0	0.0	50.0	0.0	0.0	0.0	100.0
YERSINIA	Cases	7	2	-	-	-	-	-	1	-	10
	Percent	70.0	20.0	0.0	0.0	0.0	0.0	0.0	10.0	0.0	100.0
Total	Cases	103	275	83	74	79	89	51	80	2	836
	Percent	12.3	32.9	9.9	8.9	9.4	10.6	6.1	9.6	0.2	100.0

CDC's Emerging Infections Program (FoodNet)

FoodNet 2001 Final Report

Table 6 - Cases per 100,000 by Age Distribution by Pathogen for All Sites

Cases per 100,000	Age Specific Strata							
	0 - <1 YR	1 - <10 YRS	10 - <20 YRS	20 - <30 YRS	30 - <40 YRS	40 - <50 YRS	50 - <60 YRS	60+ YRS
Pathogen								
CAMPYLOBACTER	32.6	16.0	8.8	15.2	16.1	14.8	13.5	10.4
CRYPTOSPORIDIUM	3.7	2.9	1.3	1.2	2.3	1.4	0.6	0.5
CYCLOSPORA	0.0	0.0	0.1	0.3	0.0	0.1	0.1	0.0
E. COLI O157	1.9	5.0	1.9	1.2	0.9	0.7	1.1	1.1
LISTERIA	2.2	0.0	0.0	0.1	0.2	0.1	0.2	1.1
SALMONELLA	144.0	33.3	11.1	11.4	10.4	8.9	8.3	12.2
SHIGELLA	9.1	22.3	3.0	5.9	7.3	4.0	2.6	1.2
STEC NONO157	0.2	0.6	0.3	0.2	0.1	0.0	0.0	0.1
VIBRIO	0.4	0.1	0.0	0.1	0.2	0.3	0.3	0.5
YERSINIA	11.4	0.6	0.1	0.2	0.2	0.2	0.2	0.3

CDC's Emerging Infections Program (FoodNet)  
 FoodNet 2001 Final Report  
 Tables 6a through 6i - Cases per 100,000 by Age Distribution by Pathogen by Site

Table 6a: Site = California

Cases per 100,000	Age Specific Strata							
	0 - <1 YR	1 - <10 YRS	10 - <20 YRS	20 - <30 YRS	30 - <40 YRS	40 - <50 YRS	50 - <60 YRS	60+ YRS
Pathogen								
CAMPYLOBACTER	46.2	34.9	18.3	38.1	42.3	31.3	26.5	23.2
CRYPTOSPORIDIUM	-	0.2	-	0.1	2.9	1.6	0.4	0.3
CYCLOSPORA	-	-	-	-	-	-	-	-
E. COLI 0157	2.6	6.5	0.8	0.4	0.4	0.2	0.6	0.2
LISTERIA	5.1	-	0.3	0.2	0.7	-	0.6	1.3
SALMONELLA	84.7	35.5	12.1	12.5	12.4	10.2	7.7	12.9
SHIGELLA	2.6	19.4	4.6	13.1	27.1	16.4	7.2	3.0
STEC NONO157	-	-	-	-	-	-	-	-
VIBRIO	-	0.3	-	0.2	0.7	0.8	0.3	1.1
YERSINIA	5.1	1.4	0.5	-	0.5	0.4	0.3	0.4

CDC's Emerging Infections Program (FoodNet)  
 FoodNet 2001 Final Report  
 Tables 6a through 6i - Cases per 100,000 by Age Distribution by Pathogen by Site

Table 6b: Site = Colorado

Cases per 100,000	Age Specific Strata							
	0 - <1 YR	1 - <10 YRS	10 - <20 YRS	20 - <30 YRS	30 - <40 YRS	40 - <50 YRS	50 - <60 YRS	60+ YRS
Pathogen								
CAMPYLOBACTER	35.0	14.9	9.6	16.6	19.0	17.3	15.5	17.4
CRYPTOSPORIDIUM	3.2	0.4	0.7	0.3	0.8	1.4	0.4	-
CYCLOSPORA	-	-	-	-	-	-	-	-
E. COLI 0157	-	4.0	1.7	1.0	1.7	1.2	0.4	2.7
LISTERIA	-	-	-	-	0.3	0.3	-	1.2
SALMONELLA	70.0	28.0	13.1	17.9	12.1	9.3	8.2	10.4
SHIGELLA	3.2	17.8	2.4	6.7	9.9	4.9	3.9	1.5
STEC NONO157	-	0.7	0.3	-	-	-	-	0.4
VIBRIO	-	-	-	-	0.3	0.6	-	0.8
YERSINIA	9.5	0.7	0.3	-	0.6	-	-	0.4

CDC's Emerging Infections Program (FoodNet)  
 FoodNet 2001 Final Report  
 Tables 6a through 6i - Cases per 100,000 by Age Distribution by Pathogen by Site

Table 6c: Site = Connecticut

Cases per 100,000	Age Specific Strata							
	0 - <1 YR	1 - <10 YRS	10 - <20 YRS	20 - <30 YRS	30 - <40 YRS	40 - <50 YRS	50 - <60 YRS	60+ YRS
Pathogen								
CAMPYLOBACTER	28.1	14.4	9.6	13.9	17.4	17.9	16.5	11.0
CRYPTOSPORIDIUM	-	1.4	0.7	0.8	0.4	0.4	0.2	-
CYCLOSPORA	-	-	-	0.3	-	-	0.5	0.2
E. COLI 0157	-	3.1	3.5	0.8	0.4	-	0.7	0.3
LISTERIA	-	-	-	-	-	-	0.5	2.2
SALMONELLA	67.9	24.2	12.4	12.9	12.9	7.2	8.4	12.0
SHIGELLA	4.7	2.4	1.7	0.3	1.5	2.0	3.5	1.0
STEC NONO157	-	1.4	1.3	1.3	0.9	-	0.2	0.2
VIBRIO	-	0.2	-	0.5	0.2	0.2	0.5	0.3
YERSINIA	4.7	0.2	0.2	-	0.2	0.2	-	0.5

CDC's Emerging Infections Program (FoodNet)  
 FoodNet 2001 Final Report  
 Tables 6a through 6i - Cases per 100,000 by Age Distribution by Pathogen by Site

Table 6d: Site = Georgia

Cases per 100,000	Age Specific Strata							
	0 - <1 YR	1 - <10 YRS	10 - <20 YRS	20 - <30 YRS	30 - <40 YRS	40 - <50 YRS	50 - <60 YRS	60+ YRS
Pathogen								
CAMPYLOBACTER	29.8	10.6	4.5	7.6	8.2	6.8	7.5	4.8
CRYPTOSPORIDIUM	0.8	1.5	1.0	1.7	4.9	2.0	0.8	0.9
CYCLOSPORA	-	-	0.2	1.3	0.1	0.2	0.2	0.1
E. COLI 0157	-	1.4	0.8	0.8	0.5	0.2	0.2	0.1
LISTERIA	1.7	0.2	0.1	-	-	0.1	0.1	0.8
SALMONELLA	301.7	50.8	10.3	8.1	9.8	9.6	7.6	16.8
SHIGELLA	13.2	39.3	3.9	6.6	6.3	2.9	0.9	1.0
STEC NONO157	-	0.2	0.1	-	-	0.1	-	-
VIBRIO	1.7	0.1	-	0.2	0.1	0.2	0.6	0.9
YERSINIA	27.3	0.9	0.1	-	0.1	0.1	0.1	0.2



CDC's Emerging Infections Program (FoodNet)  
 FoodNet 2001 Final Report  
 Tables 6a through 6i - Cases per 100,000 by Age Distribution by Pathogen by Site

Table 6e: Site = Maryland

Cases per 100,000	Age Specific Strata							
	0 - <1 YR	1 - <10 YRS	10 - <20 YRS	20 - <30 YRS	30 - <40 YRS	40 - <50 YRS	50 - <60 YRS	60+ YRS
Pathogen								
CAMPYLOBACTER	9.0	7.1	5.8	7.7	8.2	5.8	8.1	6.9
CRYPTOSPORIDIUM	3.6	-	0.5	0.9	1.4	0.6	0.4	0.3
CYCLOSPORA	-	-	-	-	-	-	-	-
E. COLI 0157	-	0.7	0.2	0.2	0.7	0.3	0.2	0.3
LISTERIA	1.8	-	-	0.2	0.4	-	-	1.5
SALMONELLA	121.8	33.0	12.4	12.1	10.1	10.2	8.9	8.4
SHIGELLA	9.0	10.6	2.0	3.2	2.9	2.5	1.2	0.6
STEC NONO157	-	-	-	-	-	-	-	-
VIBRIO	-	0.2	-	0.2	0.7	0.3	0.2	0.5
YERSINIA	5.4	0.7	-	0.4	0.3	-	-	-

CDC's Emerging Infections Program (FoodNet)  
 FoodNet 2001 Final Report  
 Tables 6a through 6i - Cases per 100,000 by Age Distribution by Pathogen by Site

Table 6f: Site = Minnesota

Cases per 100,000	Age Specific Strata							
	0 - <1 YR	1 - <10 YRS	10 - <20 YRS	20 - <30 YRS	30 - <40 YRS	40 - <50 YRS	50 - <60 YRS	60+ YRS
Pathogen								
CAMPYLOBACTER	44.6	25.0	16.0	20.6	20.1	22.9	18.0	11.8
CRYPTOSPORIDIUM	18.4	15.0	4.0	3.4	1.7	1.9	0.9	1.0
CYCLOSPORA	-	-	-	-	-	-	-	-
E. COLI 0157	3.1	15.6	4.8	3.6	2.4	1.7	3.0	3.5
LISTERIA	-	-	-	-	-	-	-	0.5
SALMONELLA	59.9	21.9	11.7	13.9	11.6	11.6	10.6	13.7
SHIGELLA	12.3	39.0	4.4	9.5	9.8	4.4	4.7	1.9
STEC NONO157	1.5	1.8	0.5	0.5	0.1	0.1	-	0.4
VIBRIO	-	-	-	-	-	0.1	0.4	-
YERSINIA	1.5	0.5	0.1	0.6	0.1	0.5	0.6	0.3

CDC's Emerging Infections Program (FoodNet)  
 FoodNet 2001 Final Report  
 Tables 6a through 6i - Cases per 100,000 by Age Distribution by Pathogen by Site

Table 6g: Site = New York

Cases per 100,000	Age Specific Strata							
	0 - <1 YR	1 - <10 YRS	10 - <20 YRS	20 - <30 YRS	30 - <40 YRS	40 - <50 YRS	50 - <60 YRS	60+ YRS
Pathogen								
CAMPYLOBACTER	44.2	9.0	5.8	17.3	14.5	12.4	12.8	8.9
CRYPTOSPORIDIUM	-	2.0	1.0	1.2	0.9	0.3	-	-
CYCLOSPORA	-	-	-	-	-	-	-	-
E. COLI 0157	-	3.1	1.3	1.6	0.9	0.9	2.0	1.1
LISTERIA	4.0	-	-	-	-	-	0.4	1.4
SALMONELLA	56.3	24.0	7.4	15.3	12.0	7.9	11.2	11.4
SHIGELLA	8.0	2.4	1.0	2.0	1.6	0.6	1.2	0.5
STEC NONO157	-	-	-	-	-	-	-	-
VIBRIO	-	-	-	-	0.3	-	0.4	-
YERSINIA	8.0	-	-	0.4	0.3	0.3	-	0.3

CDC's Emerging Infections Program (FoodNet)  
 FoodNet 2001 Final Report  
 Tables 6a through 6i - Cases per 100,000 by Age Distribution by Pathogen by Site

Table 6h: Site = Oregon

Cases per 100,000	Age Specific Strata							
	0 - <1 YR	1 - <10 YRS	10 - <20 YRS	20 - <30 YRS	30 - <40 YRS	40 - <50 YRS	50 - <60 YRS	60+ YRS
Pathogen								
CAMPYLOBACTER	45.3	21.5	8.6	20.9	18.9	18.4	18.1	12.3
CRYPTOSPORIDIUM	4.5	2.9	2.7	1.1	1.8	2.2	0.5	0.2
CYCLOSPORA	-	-	-	-	-	-	-	-
E. COLI 0157	4.5	7.3	1.6	0.6	0.6	1.8	2.4	1.9
LISTERIA	6.8	-	-	0.2	0.2	0.2	0.2	0.9
SALMONELLA	40.7	14.0	9.7	10.8	5.9	3.9	5.4	7.4
SHIGELLA	11.3	10.9	2.1	3.7	2.4	1.7	2.2	0.9
STEC NONO157	-	0.7	0.4	-	-	-	-	-
VIBRIO	-	-	0.2	-	-	0.4	-	0.4
YERSINIA	-	0.2	0.2	0.2	0.2	0.6	0.5	0.5

CDC's Emerging Infections Program (FoodNet)  
 FoodNet 2001 Final Report  
 Tables 6a through 6i - Cases per 100,000 by Age Distribution by Pathogen by Site

Table 6i: Site = Tennessee

Cases per 100,000	Age Specific Strata							
	0 - <1 YR	1 - <10 YRS	10 - <20 YRS	20 - <30 YRS	30 - <40 YRS	40 - <50 YRS	50 - <60 YRS	60+ YRS
Pathogen								
CAMPYLOBACTER	23.0	12.8	4.7	5.5	6.7	9.8	5.8	5.9
CRYPTOSPORIDIUM	2.6	1.4	0.7	-	0.4	1.4	1.0	1.7
CYCLOSPORA	-	-	-	-	-	-	-	-
E. COLI 0157	10.2	3.6	2.2	1.7	0.4	0.2	1.3	0.2
LISTERIA	2.6	-	-	0.2	0.2	-	-	0.5
SALMONELLA	202.0	41.4	11.2	7.0	7.9	7.1	7.7	11.1
SHIGELLA	5.1	16.7	1.7	3.1	2.0	1.6	0.6	-
STEC NONO157	-	-	-	-	-	-	-	-
VIBRIO	-	-	-	0.2	-	0.2	-	-
YERSINIA	17.9	0.6	-	-	-	-	-	0.2

CDC's Emerging Infections Program (FoodNet)  
 FoodNet 2001 Final Report  
 Table 7 - Sex Distribution by Pathogen for All Sites

		SEX		Total
		F	M	
Pathogen				
CAMPYLOBACTER	Cases	2146	2581	4727
	Percent	45.4	54.6	100.0
CRYPTOSPORIDIUM	Cases	236	339	575
	Percent	41.0	59.0	100.0
CYCLOSPORA	Cases	16	15	31
	Percent	51.6	48.4	100.0
E. COLI 0157	Cases	309	251	560
	Percent	55.2	44.8	100.0
LISTERIA	Cases	49	44	93
	Percent	52.7	47.3	100.0
SALMONELLA	Cases	2620	2570	5190
	Percent	50.5	49.5	100.0
SHIGELLA	Cases	960	1249	2209
	Percent	43.5	56.5	100.0
STEC NON0157	Cases	27	34	61
	Percent	44.3	55.7	100.0
VIBRIO	Cases	31	48	79
	Percent	39.2	60.8	100.0
YERSINIA	Cases	71	72	143
	Percent	49.7	50.3	100.0
Total	Cases	6465	7203	13668
	Percent	47.3	52.7	100.0

There are 87 cases where sex is unknown.

CDC's Emerging Infections Program (FoodNet)  
 FoodNet 2001 Final Report  
 Tables 7a through 7i - Sex Distribution by Pathogen by Site

Table 7a: Site = California		SEX		Total
		F	M	
Pathogen				
CAMPYLOBACTER	Cases	421	578	999
	Percent	42.1	57.9	100.0
CRYPTOSPORIDIUM	Cases	6	54	60
	Percent	10.0	90.0	100.0
E. COLI 0157	Cases	20	16	36
	Percent	55.6	44.4	100.0
LISTERIA	Cases	12	4	16
	Percent	75.0	25.0	100.0
SALMONELLA	Cases	225	255	480
	Percent	46.9	53.1	100.0
SHIGELLA	Cases	103	324	427
	Percent	24.1	75.9	100.0
VIBRIO	Cases	6	10	16
	Percent	37.5	62.5	100.0
YERSINIA	Cases	7	10	17
	Percent	41.2	58.8	100.0
Total	Cases	800	1251	2051
	Percent	39.0	61.0	100.0

There are no cases where sex is unknown.

CDC's Emerging Infections Program (FoodNet)  
 FoodNet 2001 Final Report  
 Tables 7a through 7i - Sex Distribution by Pathogen by Site

Table 7b: Site = Colorado		SEX		Total
		F	M	
Pathogen				
CAMPYLOBACTER	Cases	156	187	343
	Percent	45.5	54.5	100.0
CRYPTOSPORIDIUM	Cases	7	7	14
	Percent	50.0	50.0	100.0
E. COLI 0157	Cases	16	21	37
	Percent	43.2	56.8	100.0
LISTERIA	Cases	2	3	5
	Percent	40.0	60.0	100.0
SALMONELLA	Cases	154	162	316
	Percent	48.7	51.3	100.0
SHIGELLA	Cases	48	95	143
	Percent	33.6	66.4	100.0
STEC NON0157	Cases	2	2	4
	Percent	50.0	50.0	100.0
VIBRIO	Cases	1	4	5
	Percent	20.0	80.0	100.0
YERSINIA	Cases	3	6	9
	Percent	33.3	66.7	100.0
Total	Cases	389	487	876
	Percent	44.4	55.6	100.0

There are 2 cases where sex is unknown.



CDC's Emerging Infections Program (FoodNet)  
 FoodNet 2001 Final Report  
 Tables 7a through 7i - Sex Distribution by Pathogen by Site

Table 7c: Site = Connecticut		SEX		Total
		F	M	
Pathogen				
CAMPYLOBACTER	Cases	237	258	495
	Percent	47.9	52.1	100.0
CRYPTOSPORIDIUM	Cases	9	8	17
	Percent	52.9	47.1	100.0
CYCLOSPORA	Cases	3	1	4
	Percent	75.0	25.0	100.0
E. COLI O157	Cases	18	21	39
	Percent	46.2	53.8	100.0
LISTERIA	Cases	6	9	15
	Percent	40.0	60.0	100.0
SALMONELLA	Cases	247	206	453
	Percent	54.5	45.5	100.0
SHIGELLA	Cases	26	34	60
	Percent	43.3	56.7	100.0
STEC NONO157	Cases	10	14	24
	Percent	41.7	58.3	100.0
VIBRIO	Cases	3	6	9
	Percent	33.3	66.7	100.0
YERSINIA	Cases	6	3	9
	Percent	66.7	33.3	100.0
Total	Cases	565	560	1125
	Percent	50.2	49.8	100.0

There is 1 case where sex is unknown.

CDC's Emerging Infections Program (FoodNet)  
 FoodNet 2001 Final Report  
 Tables 7a through 7i - Sex Distribution by Pathogen by Site

Table 7d: Site = Georgia		SEX		Total
		F	M	
Pathogen				
CAMPYLOBACTER	Cases	269	328	597
	Percent	45.1	54.9	100.0
CRYPTOSPORIDIUM	Cases	48	111	159
	Percent	30.2	69.8	100.0
CYCLOSPORA	Cases	13	14	27
	Percent	48.1	51.9	100.0
E. COLI 0157	Cases	27	23	50
	Percent	54.0	46.0	100.0
LISTERIA	Cases	8	8	16
	Percent	50.0	50.0	100.0
SALMONELLA	Cases	794	841	1635
	Percent	48.6	51.4	100.0
SHIGELLA	Cases	312	397	709
	Percent	44.0	56.0	100.0
STEC NON0157	Cases	2	2	4
	Percent	50.0	50.0	100.0
VIBRIO	Cases	12	12	24
	Percent	50.0	50.0	100.0
YERSINIA	Cases	24	26	50
	Percent	48.0	52.0	100.0
Total	Cases	1509	1762	3271
	Percent	46.1	53.9	100.0

There are 63 cases where sex is unknown.

CDC's Emerging Infections Program (FoodNet)  
 FoodNet 2001 Final Report  
 Tables 7a through 7i - Sex Distribution by Pathogen by Site

Table 7e: Site = Maryland		SEX		Total
		F	M	
Pathogen				
CAMPYLOBACTER	Cases	146	154	300
	Percent	48.7	51.3	100.0
CRYPTOSPORIDIUM	Cases	11	18	29
	Percent	37.9	62.1	100.0
E. COLI 0157	Cases	9	7	16
	Percent	56.3	43.8	100.0
LISTERIA	Cases	9	5	14
	Percent	64.3	35.7	100.0
SALMONELLA	Cases	315	307	622
	Percent	50.6	49.4	100.0
SHIGELLA	Cases	70	71	141
	Percent	49.6	50.4	100.0
VIBRIO	Cases	4	9	13
	Percent	30.8	69.2	100.0
YERSINIA	Cases	5	7	12
	Percent	41.7	58.3	100.0
Total	Cases	569	578	1147
	Percent	49.6	50.4	100.0

There are no cases where sex is unknown.

CDC's Emerging Infections Program (FoodNet)  
 FoodNet 2001 Final Report  
 Tables 7a through 7i - Sex Distribution by Pathogen by Site

Table 7f: Site = Minnesota		SEX		Total
		F	M	
Pathogen				
CAMPYLOBACTER	Cases	421	533	954
	Percent	44.1	55.9	100.0
CRYPTOSPORIDIUM	Cases	104	94	198
	Percent	52.5	47.5	100.0
E. COLI 0157	Cases	130	102	232
	Percent	56.0	44.0	100.0
LISTERIA	Cases	1	3	4
	Percent	25.0	75.0	100.0
SALMONELLA	Cases	365	328	693
	Percent	52.7	47.3	100.0
SHIGELLA	Cases	282	211	493
	Percent	57.2	42.8	100.0
STEC NON0157	Cases	11	13	24
	Percent	45.8	54.2	100.0
VIBRIO	Cases	1	2	3
	Percent	33.3	66.7	100.0
YERSINIA	Cases	11	8	19
	Percent	57.9	42.1	100.0
Total	Cases	1326	1294	2620
	Percent	50.6	49.4	100.0

There are no cases where sex is unknown.

CDC's Emerging Infections Program (FoodNet)  
 FoodNet 2001 Final Report  
 Tables 7a through 7i - Sex Distribution by Pathogen by Site

Table 7g: Site = New York		SEX		Total
		F	M	
Pathogen				
CAMPYLOBACTER	Cases	124	124	248
	Percent	50.0	50.0	100.0
CRYPTOSPORIDIUM	Cases	5	10	15
	Percent	33.3	66.7	100.0
E. COLI 0157	Cases	17	14	31
	Percent	54.8	45.2	100.0
LISTERIA	Cases	3	4	7
	Percent	42.9	57.1	100.0
SALMONELLA	Cases	156	115	271
	Percent	57.6	42.4	100.0
SHIGELLA	Cases	15	13	28
	Percent	53.6	46.4	100.0
VIBRIO	Cases	2	0	2
	Percent	100.0	0	100.0
YERSINIA	Cases	3	3	6
	Percent	50.0	50.0	100.0
Total	Cases	325	283	608
	Percent	53.5	46.5	100.0

There are no cases where sex is unknown.

CDC's Emerging Infections Program (FoodNet)  
 FoodNet 2001 Final Report  
 Tables 7a through 7i - Sex Distribution by Pathogen by Site

Table 7h: Site = Oregon		SEX		Total
		F	M	
Pathogen				
CAMPYLOBACTER	Cases	274	306	580
	Percent	47.2	52.8	100.0
CRYPTOSPORIDIUM	Cases	29	27	56
	Percent	51.8	48.2	100.0
E. COLI 0157	Cases	51	26	77
	Percent	66.2	33.8	100.0
LISTERIA	Cases	6	6	12
	Percent	50.0	50.0	100.0
SALMONELLA	Cases	159	130	289
	Percent	55.0	45.0	100.0
SHIGELLA	Cases	59	52	111
	Percent	53.2	46.8	100.0
STEC NON0157	Cases	2	3	5
	Percent	40.0	60.0	100.0
VIBRIO	Cases	2	3	5
	Percent	40.0	60.0	100.0
YERSINIA	Cases	6	5	11
	Percent	54.5	45.5	100.0
Total	Cases	588	558	1146
	Percent	51.3	48.7	100.0

There are 9 cases where sex is unknown.

CDC's Emerging Infections Program (FoodNet)  
 FoodNet 2001 Final Report  
 Tables 7a through 7i - Sex Distribution by Pathogen by Site

Table 7i: Site = Tennessee		SEX		Total
		F	M	
Pathogen				
CAMPYLOBACTER	Cases	98	113	211
	Percent	46.4	53.6	100.0
CRYPTOSPORIDIUM	Cases	17	10	27
	Percent	63.0	37.0	100.0
E. COLI 0157	Cases	21	21	42
	Percent	50.0	50.0	100.0
LISTERIA	Cases	2	2	4
	Percent	50.0	50.0	100.0
SALMONELLA	Cases	205	226	431
	Percent	47.6	52.4	100.0
SHIGELLA	Cases	45	52	97
	Percent	46.4	53.6	100.0
VIBRIO	Cases	0	2	2
	Percent	0	100.0	100.0
YERSINIA	Cases	6	4	10
	Percent	60.0	40.0	100.0
Total	Cases	394	430	824
	Percent	47.8	52.2	100.0

There are 12 cases where sex is unknown.

CDC's Emerging Infections Program (FoodNet)  
FoodNet 2001 Final Report  
Table 8 - Race by Pathogen for All Sites

		Race Category					Total
		ASIAN	BLACK	NATIVE AMERICAN	WHITE	UNKNOWN	
Pathogen							
CAMPYLOBACTER	Cases	147	179	18	2582	1825	4751
	Percent	3.1	3.8	0.4	54.3	38.4	100.0
CRYPTOSPORIDIUM	Cases	10	101	2	279	183	575
	Percent	1.7	17.6	0.3	48.5	31.8	100.0
CYCLOSPORA	Cases	0	0	0	24	8	32
	Percent	0	0	0	75.0	25.0	100.0
E. COLI 0157	Cases	19	35	3	429	74	560
	Percent	3.4	6.3	0.5	76.6	13.2	100.0
LISTERIA	Cases	5	7	0	67	15	94
	Percent	5.3	7.4	0	71.3	16.0	100.0
SALMONELLA	Cases	217	754	18	2636	1615	5240
	Percent	4.1	14.4	0.3	50.3	30.8	100.0
SHIGELLA	Cases	32	575	46	918	648	2219
	Percent	1.4	25.9	2.1	41.4	29.2	100.0
STEC NON0157	Cases	2	0	0	40	19	61
	Percent	3.3	0	0	65.6	31.1	100.0
VIBRIO	Cases	3	7	1	43	25	79
	Percent	3.8	8.9	1.3	54.4	31.6	100.0
YERSINIA	Cases	8	57	1	39	39	144
	Percent	5.6	39.6	0.7	27.1	27.1	100.0
Total	Cases	443	1715	89	7057	4451	13755
	Percent	3.2	12.5	0.6	51.3	32.4	100.0



CDC's Emerging Infections Program (FoodNet)  
FoodNet 2001 Final Report  
Tables 8a through 8i - Race by Pathogen by Site

Table 8a: Site = California		Race Category					Total
		ASIAN	BLACK	NATIVE AMERICAN	WHITE	UNKNOWN	
Pathogen							
CAMPYLOBACTER	Cases	85	32	4	367	511	999
	Percent	8.5	3.2	0.4	36.7	51.2	100.0
CRYPTOSPORIDIUM	Cases	5	5	1	28	21	60
	Percent	8.3	8.3	1.7	46.7	35.0	100.0
CYCLOSPORA	Cases	-	-	-	-	-	-
	Percent	-	-	-	-	-	-
E. COLI 0157	Cases	9	3	-	14	10	36
	Percent	25.0	8.3	0.0	38.9	27.8	100.0
LISTERIA	Cases	2	1	-	11	2	16
	Percent	12.5	6.3	0.0	68.8	12.5	100.0
SALMONELLA	Cases	123	39	3	134	181	480
	Percent	25.6	8.1	0.6	27.9	37.7	100.0
SHIGELLA	Cases	15	20	3	237	152	427
	Percent	3.5	4.7	0.7	55.5	35.6	100.0
STEC NON0157	Cases	-	-	-	-	-	-
	Percent	-	-	-	-	-	-
VIBRIO	Cases	-	1	1	8	6	16
	Percent	0.0	6.3	6.3	50.0	37.5	100.0
YERSINIA	Cases	4	2	-	6	5	17
	Percent	23.5	11.8	0.0	35.3	29.4	100.0
Total	Cases	243	103	12	805	888	2051
	Percent	11.8	5.0	0.6	39.2	43.3	100.0

CDC's Emerging Infections Program (FoodNet)  
FoodNet 2001 Final Report  
Tables 8a through 8i - Race by Pathogen by Site

Table 8b: Site = Colorado		Race Category					Total
		ASIAN	BLACK	NATIVE AMERICAN	WHITE	UNKNOWN	
Pathogen							
CAMPYLOBACTER	Cases	4	7	-	207	125	343
	Percent	1.2	2.0	0.0	60.3	36.4	100.0
CRYPTOSPORIDIUM	Cases	-	1	-	7	6	14
	Percent	0.0	7.1	0.0	50.0	42.9	100.0
CYCLOSPORA	Cases	-	-	-	-	-	-
	Percent	-	-	-	-	-	-
E. COLI 0157	Cases	1	-	-	23	13	37
	Percent	2.7	0.0	0.0	62.2	35.1	100.0
LISTERIA	Cases	-	-	-	3	2	5
	Percent	0.0	0.0	0.0	60.0	40.0	100.0
SALMONELLA	Cases	4	14	1	167	131	317
	Percent	1.3	4.4	0.3	52.7	41.3	100.0
SHIGELLA	Cases	1	17	1	79	46	144
	Percent	0.7	11.8	0.7	54.9	31.9	100.0
STEC NON0157	Cases	-	-	-	2	2	4
	Percent	0.0	0.0	0.0	50.0	50.0	100.0
VIBRIO	Cases	-	-	-	3	2	5
	Percent	0.0	0.0	0.0	60.0	40.0	100.0
YERSINIA	Cases	2	1	-	3	3	9
	Percent	22.2	11.1	0.0	33.3	33.3	100.0
Total	Cases	12	40	2	494	330	878
	Percent	1.4	4.6	0.2	56.3	37.6	100.0

CDC's Emerging Infections Program (FoodNet)  
 FoodNet 2001 Final Report  
 Tables 8a through 8i - Race by Pathogen by Site

Table 8c: Site = Connecticut		Race Category					Total
		ASIAN	BLACK	NATIVE AMERICAN	WHITE	UNKNOWN	
Pathogen							
CAMPYLOBACTER	Cases	-	9	-	135	351	495
	Percent	0.0	1.8	0.0	27.3	70.9	100.0
CRYPTOSPORIDIUM	Cases	-	1	-	5	11	17
	Percent	0.0	5.9	0.0	29.4	64.7	100.0
CYCLOSPORA	Cases	-	-	-	3	1	4
	Percent	0.0	0.0	0.0	75.0	25.0	100.0
E. COLI 0157	Cases	-	3	-	34	2	39
	Percent	0.0	7.7	0.0	87.2	5.1	100.0
LISTERIA	Cases	-	-	-	12	3	15
	Percent	0.0	0.0	0.0	80.0	20.0	100.0
SALMONELLA	Cases	7	25	-	213	209	454
	Percent	1.5	5.5	0.0	46.9	46.0	100.0
SHIGELLA	Cases	-	1	-	14	45	60
	Percent	0.0	1.7	0.0	23.3	75.0	100.0
STEC NON0157	Cases	1	-	-	19	4	24
	Percent	4.2	0.0	0.0	79.2	16.7	100.0
VIBRIO	Cases	-	-	-	6	3	9
	Percent	0.0	0.0	0.0	66.7	33.3	100.0
YERSINIA	Cases	-	1	-	2	6	9
	Percent	0.0	11.1	0.0	22.2	66.7	100.0
Total	Cases	8	40	-	443	635	1126
	Percent	0.7	3.6	0.0	39.3	56.4	100.0

CDC's Emerging Infections Program (FoodNet)  
FoodNet 2001 Final Report  
Tables 8a through 8i - Race by Pathogen by Site

Table 8d: Site = Georgia		Race Category					Total
		ASIAN	BLACK	NATIVE AMERICAN	WHITE	UNKNOWN	
Pathogen							
CAMPYLOBACTER	Cases	5	48	2	285	274	614
	Percent	0.8	7.8	0.3	46.4	44.6	100.0
CRYPTOSPORIDIUM	Cases	2	62	-	47	48	159
	Percent	1.3	39.0	0.0	29.6	30.2	100.0
CYCLOSPORA	Cases	-	-	-	21	7	28
	Percent	0.0	0.0	0.0	75.0	25.0	100.0
E. COLI 0157	Cases	1	14	-	32	3	50
	Percent	2.0	28.0	0.0	64.0	6.0	100.0
LISTERIA	Cases	-	5	-	10	1	16
	Percent	0.0	31.3	0.0	62.5	6.3	100.0
SALMONELLA	Cases	10	314	-	686	665	1675
	Percent	0.6	18.7	0.0	41.0	39.7	100.0
SHIGELLA	Cases	1	396	-	148	169	714
	Percent	0.1	55.5	0.0	20.7	23.7	100.0
STEC NON0157	Cases	1	-	-	3	-	4
	Percent	25.0	0.0	0.0	75.0	0.0	100.0
VIBRIO	Cases	1	2	-	13	8	24
	Percent	4.2	8.3	0.0	54.2	33.3	100.0
YERSINIA	Cases	-	38	-	4	8	50
	Percent	0.0	76.0	0.0	8.0	16.0	100.0
Total	Cases	21	879	2	1249	1183	3334
	Percent	0.6	26.4	0.1	37.5	35.5	100.0

CDC's Emerging Infections Program (FoodNet)  
FoodNet 2001 Final Report  
Tables 8a through 8i - Race by Pathogen by Site

Table 8e: Site = Maryland		Race Category					Total
		ASIAN	BLACK	NATIVE AMERICAN	WHITE	UNKNOWN	
Pathogen							
CAMPYLOBACTER	Cases	15	33	-	196	56	300
	Percent	5.0	11.0	0.0	65.3	18.7	100.0
CRYPTOSPORIDIUM	Cases	-	22	-	5	2	29
	Percent	0.0	75.9	0.0	17.2	6.9	100.0
CYCLOSPORA	Cases	-	-	-	-	-	-
	Percent	-	-	-	-	-	-
E. COLI 0157	Cases	1	2	-	13	-	16
	Percent	6.3	12.5	0.0	81.3	0.0	100.0
LISTERIA	Cases	3	1	-	7	3	14
	Percent	21.4	7.1	0.0	50.0	21.4	100.0
SALMONELLA	Cases	27	210	-	286	99	622
	Percent	4.3	33.8	0.0	46.0	15.9	100.0
SHIGELLA	Cases	1	52	-	56	32	141
	Percent	0.7	36.9	0.0	39.7	22.7	100.0
STEC NON0157	Cases	-	-	-	-	-	-
	Percent	-	-	-	-	-	-
VIBRIO	Cases	1	3	-	6	3	13
	Percent	7.7	23.1	0.0	46.2	23.1	100.0
YERSINIA	Cases	-	6	-	3	3	12
	Percent	0.0	50.0	0.0	25.0	25.0	100.0
Total	Cases	48	329	-	572	198	1147
	Percent	4.2	28.7	0.0	49.9	17.3	100.0

CDC's Emerging Infections Program (FoodNet)  
 FoodNet 2001 Final Report  
 Tables 8a through 8i - Race by Pathogen by Site

Table 8f: Site = Minnesota		Race Category					Total
		ASIAN	BLACK	NATIVE AMERICAN	WHITE	UNKNOWN	
Pathogen							
CAMPYLOBACTER	Cases	24	24	9	790	107	954
	Percent	2.5	2.5	0.9	82.8	11.2	100.0
CRYPTOSPORIDIUM	Cases	2	2	1	133	60	198
	Percent	1.0	1.0	0.5	67.2	30.3	100.0
CYCLOSPORA	Cases	-	-	-	-	-	-
	Percent	-	-	-	-	-	-
E. COLI 0157	Cases	5	4	1	196	26	232
	Percent	2.2	1.7	0.4	84.5	11.2	100.0
LISTERIA	Cases	-	-	-	4	-	4
	Percent	0.0	0.0	0.0	100.0	0.0	100.0
SALMONELLA	Cases	29	31	10	499	124	693
	Percent	4.2	4.5	1.4	72.0	17.9	100.0
SHIGELLA	Cases	9	40	42	275	127	493
	Percent	1.8	8.1	8.5	55.8	25.8	100.0
STEC NON0157	Cases	-	-	-	13	11	24
	Percent	0.0	0.0	0.0	54.2	45.8	100.0
VIBRIO	Cases	1	-	-	2	-	3
	Percent	33.3	0.0	0.0	66.7	0.0	100.0
YERSINIA	Cases	2	1	1	12	3	19
	Percent	10.5	5.3	5.3	63.2	15.8	100.0
Total	Cases	72	102	64	1924	458	2620
	Percent	2.7	3.9	2.4	73.4	17.5	100.0

CDC's Emerging Infections Program (FoodNet)  
FoodNet 2001 Final Report  
Tables 8a through 8i - Race by Pathogen by Site

Table 8g: Site = New York		Race Category					Total
		ASIAN	BLACK	NATIVE AMERICAN	WHITE	UNKNOWN	
Pathogen							
CAMPYLOBACTER	Cases	7	4	1	231	5	248
	Percent	2.8	1.6	0.4	93.1	2.0	100.0
CRYPTOSPORIDIUM	Cases	-	-	-	13	2	15
	Percent	0.0	0.0	0.0	86.7	13.3	100.0
CYCLOSPORA	Cases	-	-	-	-	-	-
	Percent	-	-	-	-	-	-
E. COLI 0157	Cases	-	-	-	31	-	31
	Percent	0.0	0.0	0.0	100.0	0.0	100.0
LISTERIA	Cases	-	-	-	7	-	7
	Percent	0.0	0.0	0.0	100.0	0.0	100.0
SALMONELLA	Cases	4	26	1	225	15	271
	Percent	1.5	9.6	0.4	83.0	5.5	100.0
SHIGELLA	Cases	1	2	-	22	3	28
	Percent	3.6	7.1	0.0	78.6	10.7	100.0
STEC NON0157	Cases	-	-	-	-	-	-
	Percent	-	-	-	-	-	-
VIBRIO	Cases	-	1	-	1	-	2
	Percent	0.0	50.0	0.0	50.0	0.0	100.0
YERSINIA	Cases	-	1	-	5	-	6
	Percent	0.0	16.7	0.0	83.3	0.0	100.0
Total	Cases	12	34	2	535	25	608
	Percent	2.0	5.6	0.3	88.0	4.1	100.0

CDC's Emerging Infections Program (FoodNet)  
 FoodNet 2001 Final Report  
 Tables 8a through 8i - Race by Pathogen by Site

Table 8h: Site = Oregon		Race Category					Total
		ASIAN	BLACK	NATIVE AMERICAN	WHITE	UNKNOWN	
Pathogen							
CAMPYLOBACTER	Cases	4	4	2	245	331	586
	Percent	0.7	0.7	0.3	41.8	56.5	100.0
CRYPTOSPORIDIUM	Cases	-	1	-	31	24	56
	Percent	0.0	1.8	0.0	55.4	42.9	100.0
CYCLOSPORA	Cases	-	-	-	-	-	-
	Percent	-	-	-	-	-	-
E. COLI 0157	Cases	1	2	2	58	14	77
	Percent	1.3	2.6	2.6	75.3	18.2	100.0
LISTERIA	Cases	-	-	-	10	2	12
	Percent	0.0	0.0	0.0	83.3	16.7	100.0
SALMONELLA	Cases	9	3	3	199	76	290
	Percent	3.1	1.0	1.0	68.6	26.2	100.0
SHIGELLA	Cases	2	-	-	67	43	112
	Percent	1.8	0.0	0.0	59.8	38.4	100.0
STEC NON0157	Cases	-	-	-	3	2	5
	Percent	0.0	0.0	0.0	60.0	40.0	100.0
VIBRIO	Cases	-	-	-	3	2	5
	Percent	0.0	0.0	0.0	60.0	40.0	100.0
YERSINIA	Cases	-	-	-	2	10	12
	Percent	0.0	0.0	0.0	16.7	83.3	100.0
Total	Cases	16	10	7	618	504	1155
	Percent	1.4	0.9	0.6	53.5	43.6	100.0



CDC's Emerging Infections Program (FoodNet)  
FoodNet 2001 Final Report  
Tables 8a through 8i - Race by Pathogen by Site

Table 8i: Site = Tennessee		Race Category					Total
		ASIAN	BLACK	NATIVE AMERICAN	WHITE	UNKNOWN	
Pathogen							
CAMPYLOBACTER	Cases	3	18	-	126	65	212
	Percent	1.4	8.5	0.0	59.4	30.7	100.0
CRYPTOSPORIDIUM	Cases	1	7	-	10	9	27
	Percent	3.7	25.9	0.0	37.0	33.3	100.0
CYCLOSPORA	Cases	-	-	-	-	-	-
	Percent	-	-	-	-	-	-
E. COLI 0157	Cases	1	7	-	28	6	42
	Percent	2.4	16.7	0.0	66.7	14.3	100.0
LISTERIA	Cases	-	-	-	3	2	5
	Percent	0.0	0.0	0.0	60.0	40.0	100.0
SALMONELLA	Cases	4	92	-	227	115	438
	Percent	0.9	21.0	0.0	51.8	26.3	100.0
SHIGELLA	Cases	2	47	-	20	31	100
	Percent	2.0	47.0	0.0	20.0	31.0	100.0
STEC NON0157	Cases	-	-	-	-	-	-
	Percent	-	-	-	-	-	-
VIBRIO	Cases	-	-	-	1	1	2
	Percent	0.0	0.0	0.0	50.0	50.0	100.0
YERSINIA	Cases	-	7	-	2	1	10
	Percent	0.0	70.0	0.0	20.0	10.0	100.0
Total	Cases	11	178	-	417	230	836
	Percent	1.3	21.3	0.0	49.9	27.5	100.0

CDC's Emerging Infections Program (FoodNet)  
 FoodNet 2001 Final Report  
 Table 9 - Ethnicity by Pathogen for All Sites

		Ethnicity Category			Total
		HISPANIC	NON HISPANIC	UNKNOWN	
Pathogen					
CAMPYLOBACTER	Cases	239	2332	2180	4751
	Percent	5.0	49.1	45.9	100.0
CRYPTOSPORIDIUM	Cases	22	306	247	575
	Percent	3.8	53.2	43.0	100.0
CYCLOSPORA	Cases	0	13	19	32
	Percent	0	40.6	59.4	100.0
E. COLI 0157	Cases	16	433	111	560
	Percent	2.9	77.3	19.8	100.0
LISTERIA	Cases	8	64	22	94
	Percent	8.5	68.1	23.4	100.0
SALMONELLA	Cases	269	2464	2507	5240
	Percent	5.1	47.0	47.8	100.0
SHIGELLA	Cases	261	1158	800	2219
	Percent	11.8	52.2	36.1	100.0
STEC NON0157	Cases	1	40	20	61
	Percent	1.6	65.6	32.8	100.0
VIBRIO	Cases	6	46	27	79
	Percent	7.6	58.2	34.2	100.0
YERSINIA	Cases	4	77	63	144
	Percent	2.8	53.5	43.8	100.0
Total	Cases	826	6933	5996	13755
	Percent	6.0	50.4	43.6	100.0

CDC's Emerging Infections Program (FoodNet)  
 FoodNet 2001 Final Report  
 Tables 9a through 9i - Ethnicity by Pathogen by Site

Table 9a: Site = California		Ethnicity Category			Total
		HISPANIC	NON HISPANIC	UNKNOWN	
Pathogen					
CAMPYLOBACTER	Cases	64	366	569	999
	Percent	6.4	36.6	57.0	100.0
CRYPTOSPORIDIUM	Cases	9	35	16	60
	Percent	15.0	58.3	26.7	100.0
CYCLOSPORA	Cases	-	-	-	-
	Percent	-	-	-	-
E. COLI 0157	Cases	7	20	9	36
	Percent	19.4	55.6	25.0	100.0
LISTERIA	Cases	5	9	2	16
	Percent	31.3	56.3	12.5	100.0
SALMONELLA	Cases	61	180	239	480
	Percent	12.7	37.5	49.8	100.0
SHIGELLA	Cases	77	220	130	427
	Percent	18.0	51.5	30.4	100.0
STEC NON0157	Cases	-	-	-	-
	Percent	-	-	-	-
VIBRIO	Cases	1	9	6	16
	Percent	6.3	56.3	37.5	100.0
YERSINIA	Cases	1	10	6	17
	Percent	5.9	58.8	35.3	100.0
Total	Cases	225	849	977	2051
	Percent	11.0	41.4	47.6	100.0

CDC's Emerging Infections Program (FoodNet)  
FoodNet 2001 Final Report  
Tables 9a through 9i - Ethnicity by Pathogen by Site

Table 9b: Site = Colorado		Ethnicity Category			Total
		HISPANIC	NON HISPANIC	UNKNOWN	
Pathogen					
CAMPYLOBACTER	Cases	46	167	130	343
	Percent	13.4	48.7	37.9	100.0
CRYPTOSPORIDIUM	Cases	2	5	7	14
	Percent	14.3	35.7	50.0	100.0
CYCLOSPORA	Cases	-	-	-	-
	Percent	-	-	-	-
E. COLI 0157	Cases	1	23	13	37
	Percent	2.7	62.2	35.1	100.0
LISTERIA	Cases	1	2	2	5
	Percent	20.0	40.0	40.0	100.0
SALMONELLA	Cases	45	145	127	317
	Percent	14.2	45.7	40.1	100.0
SHIGELLA	Cases	33	49	62	144
	Percent	22.9	34.0	43.1	100.0
STEC NON0157	Cases	-	2	2	4
	Percent	0.0	50.0	50.0	100.0
VIBRIO	Cases	1	3	1	5
	Percent	20.0	60.0	20.0	100.0
YERSINIA	Cases	-	5	4	9
	Percent	0.0	55.6	44.4	100.0
Total	Cases	129	401	348	878
	Percent	14.7	45.7	39.6	100.0

CDC's Emerging Infections Program (FoodNet)  
 FoodNet 2001 Final Report  
 Tables 9a through 9i - Ethnicity by Pathogen by Site

Table 9c: Site = Connecticut		Ethnicity Category			Total
		HISPANIC	NON HISPANIC	UNKNOWN	
Pathogen					
CAMPYLOBACTER	Cases	20	84	391	495
	Percent	4.0	17.0	79.0	100.0
CRYPTOSPORIDIUM	Cases	3	3	11	17
	Percent	17.6	17.6	64.7	100.0
CYCLOSPORA	Cases	-	3	1	4
	Percent	0.0	75.0	25.0	100.0
E. COLI 0157	Cases	1	35	3	39
	Percent	2.6	89.7	7.7	100.0
LISTERIA	Cases	-	13	2	15
	Percent	0.0	86.7	13.3	100.0
SALMONELLA	Cases	43	194	217	454
	Percent	9.5	42.7	47.8	100.0
SHIGELLA	Cases	7	10	43	60
	Percent	11.7	16.7	71.7	100.0
STEC NON0157	Cases	-	20	4	24
	Percent	0.0	83.3	16.7	100.0
VIBRIO	Cases	2	5	2	9
	Percent	22.2	55.6	22.2	100.0
YERSINIA	Cases	-	-	9	9
	Percent	0.0	0.0	100.0	100.0
Total	Cases	76	367	683	1126
	Percent	6.7	32.6	60.7	100.0

CDC's Emerging Infections Program (FoodNet)  
 FoodNet 2001 Final Report  
 Tables 9a through 9i - Ethnicity by Pathogen by Site

Table 9d: Site = Georgia		Ethnicity Category			Total
		HISPANIC	NON HISPANIC	UNKNOWN	
Pathogen					
CAMPYLOBACTER	Cases	20	147	447	614
	Percent	3.3	23.9	72.8	100.0
CRYPTOSPORIDIUM	Cases	2	74	83	159
	Percent	1.3	46.5	52.2	100.0
CYCLOSPORA	Cases	-	10	18	28
	Percent	0.0	35.7	64.3	100.0
E. COLI 0157	Cases	1	34	15	50
	Percent	2.0	68.0	30.0	100.0
LISTERIA	Cases	-	7	9	16
	Percent	0.0	43.8	56.3	100.0
SALMONELLA	Cases	34	341	1300	1675
	Percent	2.0	20.4	77.6	100.0
SHIGELLA	Cases	36	359	319	714
	Percent	5.0	50.3	44.7	100.0
STEC NON0157	Cases	-	3	1	4
	Percent	0.0	75.0	25.0	100.0
VIBRIO	Cases	1	15	8	24
	Percent	4.2	62.5	33.3	100.0
YERSINIA	Cases	2	30	18	50
	Percent	4.0	60.0	36.0	100.0
Total	Cases	96	1020	2218	3334
	Percent	2.9	30.6	66.5	100.0

CDC's Emerging Infections Program (FoodNet)  
 FoodNet 2001 Final Report  
 Tables 9a through 9i - Ethnicity by Pathogen by Site

Table 9e: Site = Maryland		Ethnicity Category			Total
		HISPANIC	NON HISPANIC	UNKNOWN	
Pathogen					
CAMPYLOBACTER	Cases	10	204	86	300
	Percent	3.3	68.0	28.7	100.0
CRYPTOSPORIDIUM	Cases	-	11	18	29
	Percent	0.0	37.9	62.1	100.0
CYCLOSPORA	Cases	-	-	-	-
	Percent	-	-	-	-
E. COLI 0157	Cases	-	15	1	16
	Percent	0.0	93.8	6.3	100.0
LISTERIA	Cases	-	11	3	14
	Percent	0.0	78.6	21.4	100.0
SALMONELLA	Cases	21	406	195	622
	Percent	3.4	65.3	31.4	100.0
SHIGELLA	Cases	36	61	44	141
	Percent	25.5	43.3	31.2	100.0
STEC NON0157	Cases	-	-	-	-
	Percent	-	-	-	-
VIBRIO	Cases	1	7	5	13
	Percent	7.7	53.8	38.5	100.0
YERSINIA	Cases	-	4	8	12
	Percent	0.0	33.3	66.7	100.0
Total	Cases	68	719	360	1147
	Percent	5.9	62.7	31.4	100.0

CDC's Emerging Infections Program (FoodNet)  
FoodNet 2001 Final Report  
Tables 9a through 9i - Ethnicity by Pathogen by Site

Table 9f: Site = Minnesota		Ethnicity Category			Total
		HISPANIC	NON HISPANIC	UNKNOWN	
Pathogen					
CAMPYLOBACTER	Cases	32	800	122	954
	Percent	3.4	83.9	12.8	100.0
CRYPTOSPORIDIUM	Cases	2	115	81	198
	Percent	1.0	58.1	40.9	100.0
CYCLOSPORA	Cases	-	-	-	-
	Percent	-	-	-	-
E. COLI 0157	Cases	2	202	28	232
	Percent	0.9	87.1	12.1	100.0
LISTERIA	Cases	-	4	-	4
	Percent	0.0	100.0	0.0	100.0
SALMONELLA	Cases	26	523	144	693
	Percent	3.8	75.5	20.8	100.0
SHIGELLA	Cases	15	335	143	493
	Percent	3.0	68.0	29.0	100.0
STEC NON0157	Cases	-	13	11	24
	Percent	0.0	54.2	45.8	100.0
VIBRIO	Cases	-	3	-	3
	Percent	0.0	100.0	0.0	100.0
YERSINIA	Cases	-	16	3	19
	Percent	0.0	84.2	15.8	100.0
Total	Cases	77	2011	532	2620
	Percent	2.9	76.8	20.3	100.0



CDC's Emerging Infections Program (FoodNet)  
FoodNet 2001 Final Report  
Tables 9a through 9i - Ethnicity by Pathogen by Site

Table 9g: Site = New York		Ethnicity Category			Total
		HISPANIC	NON HISPANIC	UNKNOWN	
Pathogen					
CAMPYLOBACTER	Cases	18	222	8	248
	Percent	7.3	89.5	3.2	100.0
CRYPTOSPORIDIUM	Cases	1	12	2	15
	Percent	6.7	80.0	13.3	100.0
CYCLOSPORA	Cases	-	-	-	-
	Percent	-	-	-	-
E. COLI 0157	Cases	-	30	1	31
	Percent	0.0	96.8	3.2	100.0
LISTERIA	Cases	-	7	-	7
	Percent	0.0	100.0	0.0	100.0
SALMONELLA	Cases	10	248	13	271
	Percent	3.7	91.5	4.8	100.0
SHIGELLA	Cases	3	24	1	28
	Percent	10.7	85.7	3.6	100.0
STEC NON0157	Cases	-	-	-	-
	Percent	-	-	-	-
VIBRIO	Cases	-	-	2	2
	Percent	0.0	0.0	100.0	100.0
YERSINIA	Cases	-	6	-	6
	Percent	0.0	100.0	0.0	100.0
Total	Cases	32	549	27	608
	Percent	5.3	90.3	4.4	100.0

CDC's Emerging Infections Program (FoodNet)  
FoodNet 2001 Final Report  
Tables 9a through 9i - Ethnicity by Pathogen by Site

Table 9h: Site = Oregon		Ethnicity Category			Total
		HISPANIC	NON HISPANIC	UNKNOWN	
Pathogen					
CAMPYLOBACTER	Cases	25	245	316	586
	Percent	4.3	41.8	53.9	100.0
CRYPTOSPORIDIUM	Cases	3	35	18	56
	Percent	5.4	62.5	32.1	100.0
CYCLOSPORA	Cases	-	-	-	-
	Percent	-	-	-	-
E. COLI 0157	Cases	4	47	26	77
	Percent	5.2	61.0	33.8	100.0
LISTERIA	Cases	2	9	1	12
	Percent	16.7	75.0	8.3	100.0
SALMONELLA	Cases	23	179	88	290
	Percent	7.9	61.7	30.3	100.0
SHIGELLA	Cases	50	46	16	112
	Percent	44.6	41.1	14.3	100.0
STEC NON0157	Cases	1	2	2	5
	Percent	20.0	40.0	40.0	100.0
VIBRIO	Cases	-	3	2	5
	Percent	0.0	60.0	40.0	100.0
YERSINIA	Cases	1	2	9	12
	Percent	8.3	16.7	75.0	100.0
Total	Cases	109	568	478	1155
	Percent	9.4	49.2	41.4	100.0

CDC's Emerging Infections Program (FoodNet)  
FoodNet 2001 Final Report  
Tables 9a through 9i - Ethnicity by Pathogen by Site

Table 9i: Site = Tennessee		Ethnicity Category			Total
		HISPANIC	NON HISPANIC	UNKNOWN	
Pathogen					
CAMPYLOBACTER	Cases	4	97	111	212
	Percent	1.9	45.8	52.4	100.0
CRYPTOSPORIDIUM	Cases	-	16	11	27
	Percent	0.0	59.3	40.7	100.0
CYCLOSPORA	Cases	-	-	-	-
	Percent	-	-	-	-
E. COLI 0157	Cases	-	27	15	42
	Percent	0.0	64.3	35.7	100.0
LISTERIA	Cases	-	2	3	5
	Percent	0.0	40.0	60.0	100.0
SALMONELLA	Cases	6	248	184	438
	Percent	1.4	56.6	42.0	100.0
SHIGELLA	Cases	4	54	42	100
	Percent	4.0	54.0	42.0	100.0
STEC NON0157	Cases	-	-	-	-
	Percent	-	-	-	-
VIBRIO	Cases	-	1	1	2
	Percent	0.0	50.0	50.0	100.0
YERSINIA	Cases	-	4	6	10
	Percent	0.0	40.0	60.0	100.0
Total	Cases	14	449	373	836
	Percent	1.7	53.7	44.6	100.0

CDC's Emerging Infections Program (FoodNet)  
FoodNet 2001 Final Report  
Table 10 - Salmonella Serotypes by Site

Cases	Site									Total
	Ca.	Co.	Ct.	Ga.	Md.	Mn.	NY.	Or.	Tn.	
Serotype										
AARHUS	0	0	0	0	6	0	0	0	0	6
ADELAIDE	6	3	1	4	1	3	0	1	0	19
AGONA	10	3	6	10	3	19	1	1	2	55
ALACHUA	0	0	0	1	0	1	0	1	0	3
ALBANY	1	0	0	0	0	1	1	0	0	3
ANATUM	7	0	1	2	2	5	2	1	3	23
AQUA	0	0	0	1	0	0	0	0	0	1
ARECHAULETA	0	0	1	0	1	0	0	0	0	2
BAILDON	0	0	0	0	0	0	0	0	1	1
BANANA	0	1	0	0	0	0	0	0	0	1
BARDO	1	0	0	0	1	1	2	0	0	5
BAREILLY	0	0	3	12	2	4	0	0	8	29
BASSADJI	0	1	0	0	0	0	0	0	0	1
BERTA	3	2	10	5	2	5	7	1	0	35
BINZA	0	0	0	0	0	1	0	0	0	1
BLOCKLEY	0	0	0	1	0	8	0	2	0	11
BOVISMORBIFICANS	3	3	3	5	5	1	0	0	0	20
BRADFORD	0	0	0	0	0	0	0	0	1	1
BRAENDERUP	3	4	5	21	6	9	2	7	2	59
BRANDENBURG	4	1	3	4	1	1	1	0	0	15
BREDENEY	2	1	0	0	1	3	0	0	0	7
BRONX	0	0	0	0	0	1	0	0	0	1
CARMEL	0	0	0	1	0	0	0	1	0	2
CARRAU	0	0	0	1	0	0	0	0	0	1
CERRO	2	0	0	3	0	0	0	1	0	6
CEYCO	0	0	0	0	0	0	0	1	0	1
CHAMELEON	0	2	0	2	0	0	0	0	0	4

(Continued)

CDC's Emerging Infections Program (FoodNet)  
 FoodNet 2001 Final Report  
 Table 10 - Salmonella Serotypes by Site

Cases	Site									Total
	Ca.	Co.	Ct.	Ga.	Md.	Mn.	NY.	Or.	Tn.	
Serotype										
CHESTER	0	0	0	0	1	0	0	1	0	2
CHINCOL	1	0	0	0	0	0	0	0	0	1
CHOLERAESUIS	1	0	1	1	0	0	0	0	0	3
CUBANA	0	0	0	0	0	2	0	0	0	2
DERBY	3	0	0	8	2	1	3	1	2	20
DUBLIN	6	1	0	1	2	0	0	1	1	12
DURBAN	0	0	0	0	1	0	0	0	0	1
EALING	0	0	0	0	0	0	0	0	1	1
ELANATUM	1	0	0	0	0	0	0	0	0	1
EMEK	1	0	0	1	0	0	0	0	0	2
ENTERITIDIS	68	47	109	76	188	133	33	29	28	711
FLINT	0	0	0	1	0	0	0	0	1	2
FLORIDA	0	0	0	0	1	0	0	0	1	2
FRESNO	0	0	0	0	0	1	0	0	0	1
GAMINARA	0	0	0	6	2	0	0	0	1	9
GIVE	0	0	0	1	0	0	1	2	0	4
GOMA	1	0	0	0	0	0	0	0	0	1
GROENEKAN	0	1	0	0	0	0	0	0	0	1
GRUMPENSIS	0	0	0	1	0	0	0	0	0	1
HAARDT	1	0	1	0	0	0	0	0	0	2
HADAR	4	7	8	7	7	16	4	1	0	54
HAIFA	0	0	0	0	0	1	0	0	0	1
HARTFORD	1	1	3	10	1	0	5	0	1	22
HAVANA	1	0	0	0	1	0	0	0	0	2
HEIDELBERG	51	26	13	88	27	53	27	26	21	332
HOLCOMB	0	0	0	0	1	0	0	0	0	1
HVITTINGFOSS	0	0	0	0	1	0	0	0	0	1

(Continued)

CDC's Emerging Infections Program (FoodNet)  
 FoodNet 2001 Final Report  
 Table 10 - Salmonella Serotypes by Site

Cases	Site									Total
	Ca.	Co.	Ct.	Ga.	Md.	Mn.	NY.	Or.	Tn.	
Serotype										
INDIANA	0	0	0	0	1	0	0	0	0	1
INFANTIS	18	4	8	13	2	9	0	4	4	62
INVERNESS	0	0	0	2	0	0	0	0	0	2
IRUMU	0	0	0	2	0	1	0	0	0	3
ISTANBUL	3	0	0	1	0	2	0	0	0	6
ITURI	0	0	0	1	1	0	0	0	1	3
JANGWANI	0	2	0	0	0	0	0	0	0	2
JAVA	10	0	0	16	3	12	0	0	8	49
JAVIANA	2	2	1	180	8	7	0	4	28	232
JOHANNESBURG	0	0	0	3	0	0	5	0	0	8
KAAPSTAD	0	0	0	1	0	0	0	0	0	1
KEDOUGOU	0	0	0	1	0	0	0	0	0	1
KENTUCKY	1	1	2	5	0	0	0	0	1	10
KIAMBU	0	0	2	0	0	1	1	1	0	5
KINGABWA	1	0	0	0	0	0	0	0	0	1
KINGSTON	0	0	0	0	1	0	0	0	0	1
KIRKEE	0	0	0	0	1	0	0	0	0	1
KOKOMLEMLE	0	0	0	1	0	0	0	0	0	1
KOTTBUS	0	2	1	1	0	0	0	2	0	6
KRALENDYK	0	1	0	1	0	0	0	0	0	2
KUA	1	0	0	0	0	0	0	0	0	1
LANDWASSER	0	0	0	0	1	0	0	0	0	1
LEXINGTON	0	0	1	0	0	0	0	0	0	1
LITCHFIELD	2	0	1	7	1	3	0	0	4	18
LONDON	0	0	1	0	1	1	0	0	1	4
LOUBOMO	0	0	0	0	1	0	0	0	0	1
LUCIANA	0	0	0	1	0	0	0	0	0	1

(Continued)

CDC's Emerging Infections Program (FoodNet)  
FoodNet 2001 Final Report  
Table 10 - Salmonella Serotypes by Site

Cases	Site									Total
	Ca.	Co.	Ct.	Ga.	Md.	Mn.	NY.	Or.	Tn.	
Serotype										
MANHATTAN	0	0	1	1	0	1	0	1	1	5
MARINA	0	0	0	0	1	0	0	1	0	2
MBANDAKA	0	5	2	8	3	9	0	0	1	28
MELEAGRIDIS	0	0	0	0	0	1	0	0	0	1
MIAMI	0	0	1	12	0	4	2	0	1	20
MISSISSIPPI	0	0	0	56	0	0	0	0	14	70
MONOPHASIC	0	0	0	3	0	0	0	0	0	3
MONTEVIDEO	16	6	8	33	5	10	1	14	3	96
MUENCHEN	7	1	7	68	6	7	4	9	3	112
MUENSTER	0	0	0	3	1	1	0	0	0	5
NDOLO	0	1	0	0	0	0	0	0	0	1
NEWHAW	0	0	1	0	0	0	0	0	0	1
NEWINGTON	0	1	0	0	0	0	0	0	0	1
NEWPORT	40	18	56	267	33	48	17	17	63	559
NORWICH	0	0	0	3	0	3	0	0	9	15
NOT SEROTYPED	24	30	6	238	110	19	30	16	72	545
OHIO	2	1	1	2	0	1	0	0	0	7
OHLSTEDT	0	1	0	0	0	0	0	0	0	1
ONDERSTEPOORT	0	0	0	0	0	0	0	1	0	1
ORANIENBURG	8	15	8	16	12	12	10	10	7	98
OSLO	1	0	0	1	0	0	0	1	0	3
PAKISTAN	0	0	0	0	3	0	0	0	0	3
PANAMA	4	2	2	2	1	5	1	0	0	17
PARATYPHI A	7	2	1	2	2	2	0	0	0	16
PARATYPHI B	1	7	2	0	2	1	3	8	0	24
PENSACOLA	0	0	0	2	0	0	0	0	0	2
POMONA	0	0	0	2	0	0	0	0	0	2

(Continued)

CDC's Emerging Infections Program (FoodNet)  
FoodNet 2001 Final Report  
Table 10 - Salmonella Serotypes by Site

Cases	Site									Total
	Ca.	Co.	Ct.	Ga.	Md.	Mn.	NY.	Or.	Tn.	
Serotype										
POONA	8	1	3	13	4	7	4	3	2	45
READING	5	0	0	1	1	0	0	0	0	7
RICHMOND	1	0	0	0	0	0	0	0	0	1
RISSEN	0	0	0	0	0	1	0	0	0	1
ROSTOCK	0	0	0	0	1	0	0	0	0	1
RUBISLAW	1	0	0	9	2	0	0	0	0	12
SAINTPAUL	6	2	18	22	2	11	4	5	1	71
SANDIEGO	0	2	2	0	4	1	3	0	1	13
SCHLEISSHEIM	0	0	0	1	0	0	0	0	0	1
SCHWARZENGRUND	1	0	1	4	1	0	0	2	2	11
SENFTEMBERG	1	17	0	4	0	7	0	0	0	29
SOERENGA	0	0	0	1	0	0	0	0	0	1
STANLEY	7	3	3	9	3	1	0	6	1	33
STANLEYVILLE	0	0	0	1	2	1	0	0	1	5
TELELKEBIR	0	0	0	1	0	1	0	0	0	2
TENNESSEE	1	0	2	2	0	3	0	0	0	8
TEXAS	1	0	0	0	0	0	0	0	0	1
THOMPSON	13	0	12	12	5	8	5	4	9	68
TYPHI	18	0	5	12	9	7	4	8	0	63
TYPHIMURIUM	64	85	101	308	115	200	86	86	116	1161
TYPHISUIS	0	1	0	0	0	0	0	0	0	1
UGANDA	4	0	2	0	1	2	1	0	2	12
URBANA	0	0	0	0	1	0	0	1	0	2
VENEZIANA	0	0	0	1	0	0	0	0	0	1
VIRCHOW	3	0	0	1	4	3	1	3	0	15
VIRGINIA	0	0	0	2	0	0	0	0	0	2

(Continued)



CDC's Emerging Infections Program (FoodNet)  
 FoodNet 2001 Final Report  
 Table 10 - Salmonella Serotypes by Site

Cases	Site									Total
	Ca.	Co.	Ct.	Ga.	Md.	Mn.	NY.	Or.	Tn.	
Serotype										
WASSENAAR	1	0	1	1	0	0	0	0	0	3
WELIKADE	1	0	0	0	0	2	0	0	0	3
WELTEVREDEN	3	0	1	0	0	0	0	1	0	5
WORTHINGTON	1	0	0	1	1	0	0	1	1	5
S. I - :b:1,5	1	0	0	0	0	0	0	0	0	1
S. I - :b:e,n,x	1	0	0	0	0	0	0	0	0	1
S. I 3,10:e,h:-	0	0	1	0	0	0	0	1	0	2
S. I 4,5,12:b:-	0	0	3	0	0	0	0	0	0	3
S. I 4,5,12:i:-	0	0	8	19	0	0	0	0	6	33
S. I 4,5,12:nonmotil	0	0	2	0	0	0	0	0	0	2
S. I 4,5,12:r:-	0	0	0	2	0	0	0	0	0	2
S. I 4,12:-:1,2	0	0	0	1	0	0	0	0	0	1
S. I 4,12:i:-	0	0	1	2	0	0	0	0	0	3
S. I 4,12:nonmotile	0	0	0	1	0	0	0	0	0	1
S. I 6,7:-:1,5	1	0	0	1	0	0	0	0	0	2
S. I 6,7:nonmotile	0	0	1	0	0	0	0	0	0	1
S. I 6,8:-:1,2	0	0	0	1	0	0	0	0	0	1
S. I 9,12:-:1,5	0	0	0	2	0	0	0	0	0	2
S. I 9,12:l,z28:-	0	0	1	1	0	0	0	0	0	2
S. I 9,12:nonmotile	0	0	1	0	0	0	0	0	0	1
S. I 16:nonmotile	0	0	1	0	0	0	0	0	0	1
S. I Group B:b:-	3	0	0	0	0	0	0	0	0	3
S. I Group B:i:-	2	0	0	0	0	0	0	0	0	2
S. I Group B:nonmot	1	0	0	0	0	0	0	0	0	1
S. IIIa 48: g,z51:-	0	0	0	2	0	0	0	0	0	2
S. IIIb 38:l,v:z53	0	0	0	1	0	0	0	0	0	1

(Continued)

CDC's Emerging Infections Program (FoodNet)  
 FoodNet 2001 Final Report  
 Table 10 - Salmonella Serotypes by Site

Cases	Site									Total
	Ca.	Co.	Ct.	Ga.	Md.	Mn.	NY.	Or.	Tn.	
Serotype										
S. IIIb 50:r:z	1	0	0	0	0	0	0	0	0	1
S. IIIb 61?:z53I	0	0	0	1	0	0	0	0	0	1
S. IIIb 61:k:1,5,7	0	0	0	1	0	0	0	0	0	1
S. IV 44:z4,z23:-	0	0	0	0	0	0	0	0	1	1
SUBSPECIES II	0	0	0	0	0	2	0	0	0	2
SUBSPECIES III	0	0	3	0	0	2	0	1	0	6
SUBSPECIES IIIa/IIIb	0	0	0	5	0	3	0	0	0	8
SUBSPECIES IV	0	0	0	0	0	1	0	1	0	2
Total	480	317	454	1675	622	693	271	290	438	5240

CDC's Emerging Infections Program (FoodNet)  
 FoodNet 2001 Final Report  
 Table 11 - Percent Shigella Species by Site

		Species					Total
		BOYDII	DYSENTERIA	FLEXNERI	SONNEI	UNKNOWN	
Site							
California	Cases	8	4	84	305	26	427
	Percent	1.9	0.9	19.7	71.4	6.1	100.0
Colorado	Cases	2	-	25	106	11	144
	Percent	1.4	-	17.4	73.6	7.6	100.0
Connecticut	Cases	-	-	21	38	1	60
	Percent	-	-	35.0	63.3	1.7	100.0
Georgia	Cases	3	3	63	591	54	714
	Percent	0.4	0.4	8.8	82.8	7.6	100.0
Maryland	Cases	5	1	48	82	5	141
	Percent	3.5	0.7	34.0	58.2	3.5	100.0
Minnesota	Cases	2	3	29	450	9	493
	Percent	0.4	0.6	5.9	91.3	1.8	100.0
New York	Cases	1	-	10	16	1	28
	Percent	3.6	-	35.7	57.1	3.6	100.0
Oregon	Cases	4	1	55	47	5	112
	Percent	3.6	0.9	49.1	42.0	4.5	100.0
Tennessee	Cases	2	-	7	80	11	100
	Percent	2.0	-	7.0	80.0	11.0	100.0
Total	Cases	27	12	342	1715	123	2219
	Percent	1.2	0.5	15.4	77.3	5.5	100.0

CDC's Emerging Infections Program (FoodNet)  
FoodNet 2001 Final Report  
Table 12 - Source of Specimen by Pathogen for All Sites

		Source of Specimen								Total
		ABSCESS	BLOOD	CSF	ORTHO	OTHER	OTHER STERILE SITE	STOOL	URINE	
Pathogen										
CAMPYLOBACTER	Cases	0	45	1	0	146	0	4558	1	4751
	Percent	0	0.9	0.0	0	3.1	0	95.9	0.0	100.0
CRYPTOSPORIDIUM	Cases	0	0	0	0	8	0	567	0	575
	Percent	0	0	0	0	1.4	0	98.6	0	100.0
CYCLOSPORA	Cases	0	0	0	0	1	0	31	0	32
	Percent	0	0	0	0	3.1	0	96.9	0	100.0
E. COLI 0157	Cases	0	0	0	0	6	0	554	0	560
	Percent	0	0	0	0	1.1	0	98.9	0	100.0
LISTERIA	Cases	0	75	10	0	2	6	1	0	94
	Percent	0	79.8	10.6	0	2.1	6.4	1.1	0	100.0
SALMONELLA	Cases	19	293	0	3	129	8	4561	227	5240
	Percent	0.4	5.6	0	0.1	2.5	0.2	87.0	4.3	100.0
SHIGELLA	Cases	4	14	0	0	51	1	2130	19	2219
	Percent	0.2	0.6	0	0	2.3	0.0	96.0	0.9	100.0
STEC NON0157	Cases	0	0	0	0	0	0	61	0	61
	Percent	0	0	0	0	0	0	100.0	0	100.0
VIBRIO	Cases	2	13	0	0	8	2	53	1	79
	Percent	2.5	16.5	0	0	10.1	2.5	67.1	1.3	100.0
YERSINIA	Cases	1	8	0	0	3	0	125	7	144
	Percent	0.7	5.6	0	0	2.1	0	86.8	4.9	100.0
Total	Cases	26	448	11	3	354	17	12641	255	13755
	Percent	0.2	3.3	0.1	0.0	2.6	0.1	91.9	1.9	100.0

CDC's Emerging Infections Program (FoodNet)  
 FoodNet 2001 Final Report  
 Tables 12a through 12i - Source of Specimen by Pathogen by Site

Table 12a: Site = California		Source of Specimen								Total
		ABSCESS	BLOOD	CSF	ORTHO	OTHER	OTHER STERILE SITE	STOOL	URINE	
Pathogen										
CAMPYLOBACTER	Cases	-	5	-	-	35	-	959	-	999
	Percent	0.0	0.5	0.0	0.0	3.5	0.0	96.0	0.0	100.0
CRYPTOSPORIDIUM	Cases	-	-	-	-	-	-	60	-	60
	Percent	0.0	0.0	0.0	0.0	0.0	0.0	100.0	0.0	100.0
CYCLOSPORA	Cases	-	-	-	-	-	-	-	-	-
	Percent	-	-	-	-	-	-	-	-	-
E. COLI 0157	Cases	-	-	-	-	1	-	35	-	36
	Percent	0.0	0.0	0.0	0.0	2.8	0.0	97.2	0.0	100.0
LISTERIA	Cases	-	9	4	-	-	2	1	-	16
	Percent	0.0	56.3	25.0	0.0	0.0	12.5	6.3	0.0	100.0
SALMONELLA	Cases	1	44	-	-	23	3	394	15	480
	Percent	0.2	9.2	0.0	0.0	4.8	0.6	82.1	3.1	100.0
SHIGELLA	Cases	1	4	-	-	16	-	406	-	427
	Percent	0.2	0.9	0.0	0.0	3.7	0.0	95.1	0.0	100.0
STEC NON0157	Cases	-	-	-	-	-	-	-	-	-
	Percent	-	-	-	-	-	-	-	-	-
VIBRIO	Cases	1	-	-	-	-	1	14	-	16
	Percent	6.3	0.0	0.0	0.0	0.0	6.3	87.5	0.0	100.0
YERSINIA	Cases	-	1	-	-	1	-	15	-	17
	Percent	0.0	5.9	0.0	0.0	5.9	0.0	88.2	0.0	100.0
Total	Cases	3	63	4	-	76	6	1884	15	2051
	Percent	0.1	3.1	0.2	0.0	3.7	0.3	91.9	0.7	100.0

CDC's Emerging Infections Program (FoodNet)  
FoodNet 2001 Final Report  
Tables 12a through 12i - Source of Specimen by Pathogen by Site

Table 12b: Site = Colorado		Source of Specimen								Total
		ABSCESS	BLOOD	CSF	ORTHO	OTHER	OTHER STERILE SITE	STOOL	URINE	
Pathogen										
CAMPYLOBACTER	Cases	-	5	-	-	42	-	296	-	343
	Percent	0.0	1.5	0.0	0.0	12.2	0.0	86.3	0.0	100.0
CRYPTOSPORIDIUM	Cases	-	-	-	-	3	-	11	-	14
	Percent	0.0	0.0	0.0	0.0	21.4	0.0	78.6	0.0	100.0
CYCLOSPORA	Cases	-	-	-	-	-	-	-	-	-
	Percent	-	-	-	-	-	-	-	-	-
E. COLI 0157	Cases	-	-	-	-	-	-	37	-	37
	Percent	0.0	0.0	0.0	0.0	0.0	0.0	100.0	0.0	100.0
LISTERIA	Cases	-	2	-	-	1	2	-	-	5
	Percent	0.0	40.0	0.0	0.0	20.0	40.0	0.0	0.0	100.0
SALMONELLA	Cases	-	14	-	-	8	1	284	10	317
	Percent	0.0	4.4	0.0	0.0	2.5	0.3	89.6	3.2	100.0
SHIGELLA	Cases	-	2	-	-	4	1	135	2	144
	Percent	0.0	1.4	0.0	0.0	2.8	0.7	93.8	1.4	100.0
STEC NON0157	Cases	-	-	-	-	-	-	4	-	4
	Percent	0.0	0.0	0.0	0.0	0.0	0.0	100.0	0.0	100.0
VIBRIO	Cases	-	1	-	-	-	-	4	-	5
	Percent	0.0	20.0	0.0	0.0	0.0	0.0	80.0	0.0	100.0
YERSINIA	Cases	-	1	-	-	-	-	8	-	9
	Percent	0.0	11.1	0.0	0.0	0.0	0.0	88.9	0.0	100.0
Total	Cases	-	25	-	-	58	4	779	12	878
	Percent	0.0	2.8	0.0	0.0	6.6	0.5	88.7	1.4	100.0

CDC's Emerging Infections Program (FoodNet)  
 FoodNet 2001 Final Report  
 Tables 12a through 12i - Source of Specimen by Pathogen by Site

Table 12c: Site = Connecticut		Source of Specimen								Total
		ABSCESS	BLOOD	CSF	ORTHO	OTHER	OTHER STERILE SITE	STOOL	URINE	
Pathogen										
CAMPYLOBACTER	Cases	-	5	-	-	-	-	490	-	495
	Percent	0.0	1.0	0.0	0.0	0.0	0.0	99.0	0.0	100.0
CRYPTOSPORIDIUM	Cases	-	-	-	-	-	-	17	-	17
	Percent	0.0	0.0	0.0	0.0	0.0	0.0	100.0	0.0	100.0
CYCLOSPORA	Cases	-	-	-	-	-	-	4	-	4
	Percent	0.0	0.0	0.0	0.0	0.0	0.0	100.0	0.0	100.0
E. COLI 0157	Cases	-	-	-	-	-	-	39	-	39
	Percent	0.0	0.0	0.0	0.0	0.0	0.0	100.0	0.0	100.0
LISTERIA	Cases	-	13	1	-	-	1	-	-	15
	Percent	0.0	86.7	6.7	0.0	0.0	6.7	0.0	0.0	100.0
SALMONELLA	Cases	2	27	-	-	1	-	408	16	454
	Percent	0.4	5.9	0.0	0.0	0.2	0.0	89.9	3.5	100.0
SHIGELLA	Cases	-	-	-	-	1	-	58	1	60
	Percent	0.0	0.0	0.0	0.0	1.7	0.0	96.7	1.7	100.0
STEC NON0157	Cases	-	-	-	-	-	-	24	-	24
	Percent	0.0	0.0	0.0	0.0	0.0	0.0	100.0	0.0	100.0
VIBRIO	Cases	1	2	-	-	1	-	5	-	9
	Percent	11.1	22.2	0.0	0.0	11.1	0.0	55.6	0.0	100.0
YERSINIA	Cases	-	-	-	-	-	-	8	1	9
	Percent	0.0	0.0	0.0	0.0	0.0	0.0	88.9	11.1	100.0
Total	Cases	3	47	1	-	3	1	1053	18	1126
	Percent	0.3	4.2	0.1	0.0	0.3	0.1	93.5	1.6	100.0

CDC's Emerging Infections Program (FoodNet)  
 FoodNet 2001 Final Report  
 Tables 12a through 12i - Source of Specimen by Pathogen by Site

Table 12d: Site = Georgia		Source of Specimen								Total
		ABCESS	BLOOD	CSF	ORTHO	OTHER	OTHER STERILE SITE	STOOL	URINE	
Pathogen										
CAMPYLOBACTER	Cases	-	13	-	-	37	-	563	1	614
	Percent	0.0	2.1	0.0	0.0	6.0	0.0	91.7	0.2	100.0
CRYPTOSPORIDIUM	Cases	-	-	-	-	2	-	157	-	159
	Percent	0.0	0.0	0.0	0.0	1.3	0.0	98.7	0.0	100.0
CYCLOSPORA	Cases	-	-	-	-	1	-	27	-	28
	Percent	0.0	0.0	0.0	0.0	3.6	0.0	96.4	0.0	100.0
E. COLI 0157	Cases	-	-	-	-	-	-	50	-	50
	Percent	0.0	0.0	0.0	0.0	0.0	0.0	100.0	0.0	100.0
LISTERIA	Cases	-	13	3	-	-	-	-	-	16
	Percent	0.0	81.3	18.8	0.0	0.0	0.0	0.0	0.0	100.0
SALMONELLA	Cases	3	81	-	1	51	3	1464	72	1675
	Percent	0.2	4.8	0.0	0.1	3.0	0.2	87.4	4.3	100.0
SHIGELLA	Cases	2	6	-	-	20	-	678	8	714
	Percent	0.3	0.8	0.0	0.0	2.8	0.0	95.0	1.1	100.0
STEC NON0157	Cases	-	-	-	-	-	-	4	-	4
	Percent	0.0	0.0	0.0	0.0	0.0	0.0	100.0	0.0	100.0
VIBRIO	Cases	-	8	-	-	2	1	13	-	24
	Percent	0.0	33.3	0.0	0.0	8.3	4.2	54.2	0.0	100.0
YERSINIA	Cases	-	3	-	-	1	-	45	1	50
	Percent	0.0	6.0	0.0	0.0	2.0	0.0	90.0	2.0	100.0
Total	Cases	5	124	3	1	114	4	3001	82	3334
	Percent	0.1	3.7	0.1	0.0	3.4	0.1	90.0	2.5	100.0



CDC's Emerging Infections Program (FoodNet)  
 FoodNet 2001 Final Report  
 Tables 12a through 12i - Source of Specimen by Pathogen by Site

Table 12e: Site = Maryland		Source of Specimen								Total
		ABSCESS	BLOOD	CSF	ORTHO	OTHER	OTHER STERILE SITE	STOOL	URINE	
Pathogen										
CAMPYLOBACTER	Cases	-	2	-	-	3	-	295	-	300
	Percent	0.0	0.7	0.0	0.0	1.0	0.0	98.3	0.0	100.0
CRYPTOSPORIDIUM	Cases	-	-	-	-	-	-	29	-	29
	Percent	0.0	0.0	0.0	0.0	0.0	0.0	100.0	0.0	100.0
CYCLOSPORA	Cases	-	-	-	-	-	-	-	-	-
	Percent	-	-	-	-	-	-	-	-	-
E. COLI 0157	Cases	-	-	-	-	-	-	16	-	16
	Percent	0.0	0.0	0.0	0.0	0.0	0.0	100.0	0.0	100.0
LISTERIA	Cases	-	13	1	-	-	-	-	-	14
	Percent	0.0	92.9	7.1	0.0	0.0	0.0	0.0	0.0	100.0
SALMONELLA	Cases	-	47	-	2	7	-	544	22	622
	Percent	0.0	7.6	0.0	0.3	1.1	0.0	87.5	3.5	100.0
SHIGELLA	Cases	-	2	-	-	3	-	133	3	141
	Percent	0.0	1.4	0.0	0.0	2.1	0.0	94.3	2.1	100.0
STEC NON0157	Cases	-	-	-	-	-	-	-	-	-
	Percent	-	-	-	-	-	-	-	-	-
VIBRIO	Cases	-	1	-	-	4	-	8	-	13
	Percent	0.0	7.7	0.0	0.0	30.8	0.0	61.5	0.0	100.0
YERSINIA	Cases	-	-	-	-	1	-	9	2	12
	Percent	0.0	0.0	0.0	0.0	8.3	0.0	75.0	16.7	100.0
Total	Cases	-	65	1	2	18	-	1034	27	1147
	Percent	0.0	5.7	0.1	0.2	1.6	0.0	90.1	2.4	100.0

CDC's Emerging Infections Program (FoodNet)  
 FoodNet 2001 Final Report  
 Tables 12a through 12i - Source of Specimen by Pathogen by Site

Table 12f: Site = Minnesota		Source of Specimen								Total
		ABSCESS	BLOOD	CSF	ORTHO	OTHER	OTHER STERILE SITE	STOOL	URINE	
Pathogen										
CAMPYLOBACTER	Cases	-	5	1	-	2	-	946	-	954
	Percent	0.0	0.5	0.1	0.0	0.2	0.0	99.2	0.0	100.0
CRYPTOSPORIDIUM	Cases	-	-	-	-	-	-	198	-	198
	Percent	0.0	0.0	0.0	0.0	0.0	0.0	100.0	0.0	100.0
CYCLOSPORA	Cases	-	-	-	-	-	-	-	-	-
	Percent	-	-	-	-	-	-	-	-	-
E. COLI 0157	Cases	-	-	-	-	-	-	232	-	232
	Percent	0.0	0.0	0.0	0.0	0.0	0.0	100.0	0.0	100.0
LISTERIA	Cases	-	4	-	-	-	-	-	-	4
	Percent	0.0	100.0	0.0	0.0	0.0	0.0	0.0	0.0	100.0
SALMONELLA	Cases	5	34	-	-	5	-	622	27	693
	Percent	0.7	4.9	0.0	0.0	0.7	0.0	89.8	3.9	100.0
SHIGELLA	Cases	1	-	-	-	-	-	491	1	493
	Percent	0.2	0.0	0.0	0.0	0.0	0.0	99.6	0.2	100.0
STEC NON0157	Cases	-	-	-	-	-	-	24	-	24
	Percent	0.0	0.0	0.0	0.0	0.0	0.0	100.0	0.0	100.0
VIBRIO	Cases	-	-	-	-	-	-	2	1	3
	Percent	0.0	0.0	0.0	0.0	0.0	0.0	66.7	33.3	100.0
YERSINIA	Cases	1	-	-	-	-	-	18	-	19
	Percent	5.3	0.0	0.0	0.0	0.0	0.0	94.7	0.0	100.0
Total	Cases	7	43	1	-	7	-	2533	29	2620
	Percent	0.3	1.6	0.0	0.0	0.3	0.0	96.7	1.1	100.0

CDC's Emerging Infections Program (FoodNet)  
 FoodNet 2001 Final Report  
 Tables 12a through 12i - Source of Specimen by Pathogen by Site

Table 12g: Site = New York		Source of Specimen								Total
		ABSCESS	BLOOD	CSF	ORTHO	OTHER	OTHER STERILE SITE	STOOL	URINE	
Pathogen										
CAMPYLOBACTER	Cases	-	2	-	-	1	-	245	-	248
	Percent	0.0	0.8	0.0	0.0	0.4	0.0	98.8	0.0	100.0
CRYPTOSPORIDIUM	Cases	-	-	-	-	-	-	15	-	15
	Percent	0.0	0.0	0.0	0.0	0.0	0.0	100.0	0.0	100.0
CYCLOSPORA	Cases	-	-	-	-	-	-	-	-	-
	Percent	-	-	-	-	-	-	-	-	-
E. COLI 0157	Cases	-	-	-	-	-	-	31	-	31
	Percent	0.0	0.0	0.0	0.0	0.0	0.0	100.0	0.0	100.0
LISTERIA	Cases	-	6	1	-	-	-	-	-	7
	Percent	0.0	85.7	14.3	0.0	0.0	0.0	0.0	0.0	100.0
SALMONELLA	Cases	2	10	-	-	3	1	231	24	271
	Percent	0.7	3.7	0.0	0.0	1.1	0.4	85.2	8.9	100.0
SHIGELLA	Cases	-	-	-	-	-	-	27	1	28
	Percent	0.0	0.0	0.0	0.0	0.0	0.0	96.4	3.6	100.0
STEC NON0157	Cases	-	-	-	-	-	-	-	-	-
	Percent	-	-	-	-	-	-	-	-	-
VIBRIO	Cases	-	-	-	-	-	-	2	-	2
	Percent	0.0	0.0	0.0	0.0	0.0	0.0	100.0	0.0	100.0
YERSINIA	Cases	-	-	-	-	-	-	6	-	6
	Percent	0.0	0.0	0.0	0.0	0.0	0.0	100.0	0.0	100.0
Total	Cases	2	18	1	-	4	1	557	25	608
	Percent	0.3	3.0	0.2	0.0	0.7	0.2	91.6	4.1	100.0

CDC's Emerging Infections Program (FoodNet)  
 FoodNet 2001 Final Report  
 Tables 12a through 12i - Source of Specimen by Pathogen by Site

Table 12h: Site = Oregon		Source of Specimen								Total
		ABSCESS	BLOOD	CSF	ORTHO	OTHER	OTHER STERILE SITE	STOOL	URINE	
Pathogen										
CAMPYLOBACTER	Cases	-	7	-	-	1	-	578	-	586
	Percent	0.0	1.2	0.0	0.0	0.2	0.0	98.6	0.0	100.0
CRYPTOSPORIDIUM	Cases	-	-	-	-	-	-	56	-	56
	Percent	0.0	0.0	0.0	0.0	0.0	0.0	100.0	0.0	100.0
CYCLOSPORA	Cases	-	-	-	-	-	-	-	-	-
	Percent	-	-	-	-	-	-	-	-	-
E. COLI 0157	Cases	-	-	-	-	-	-	77	-	77
	Percent	0.0	0.0	0.0	0.0	0.0	0.0	100.0	0.0	100.0
LISTERIA	Cases	-	11	-	-	1	-	-	-	12
	Percent	0.0	91.7	0.0	0.0	8.3	0.0	0.0	0.0	100.0
SALMONELLA	Cases	3	19	-	-	2	-	246	20	290
	Percent	1.0	6.6	0.0	0.0	0.7	0.0	84.8	6.9	100.0
SHIGELLA	Cases	-	-	-	-	3	-	107	2	112
	Percent	0.0	0.0	0.0	0.0	2.7	0.0	95.5	1.8	100.0
STEC NON0157	Cases	-	-	-	-	-	-	5	-	5
	Percent	0.0	0.0	0.0	0.0	0.0	0.0	100.0	0.0	100.0
VIBRIO	Cases	-	-	-	-	-	-	5	-	5
	Percent	0.0	0.0	0.0	0.0	0.0	0.0	100.0	0.0	100.0
YERSINIA	Cases	-	2	-	-	-	-	8	2	12
	Percent	0.0	16.7	0.0	0.0	0.0	0.0	66.7	16.7	100.0
Total	Cases	3	39	-	-	7	-	1082	24	1155
	Percent	0.3	3.4	0.0	0.0	0.6	0.0	93.7	2.1	100.0

CDC's Emerging Infections Program (FoodNet)  
 FoodNet 2001 Final Report  
 Tables 12a through 12i - Source of Specimen by Pathogen by Site

Table 12i: Site = Tennessee		Source of Specimen								Total
		ABSCESS	BLOOD	CSF	ORTHO	OTHER	OTHER STERILE SITE	STOOL	URINE	
Pathogen										
CAMPYLOBACTER	Cases	-	1	-	-	25	-	186	-	212
	Percent	0.0	0.5	0.0	0.0	11.8	0.0	87.7	0.0	100.0
CRYPTOSPORIDIUM	Cases	-	-	-	-	3	-	24	-	27
	Percent	0.0	0.0	0.0	0.0	11.1	0.0	88.9	0.0	100.0
CYCLOSPORA	Cases	-	-	-	-	-	-	-	-	-
	Percent	-	-	-	-	-	-	-	-	-
E. COLI 0157	Cases	-	-	-	-	5	-	37	-	42
	Percent	0.0	0.0	0.0	0.0	11.9	0.0	88.1	0.0	100.0
LISTERIA	Cases	-	4	-	-	-	1	-	-	5
	Percent	0.0	80.0	0.0	0.0	0.0	20.0	0.0	0.0	100.0
SALMONELLA	Cases	3	17	-	-	29	-	368	21	438
	Percent	0.7	3.9	0.0	0.0	6.6	0.0	84.0	4.8	100.0
SHIGELLA	Cases	-	-	-	-	4	-	95	1	100
	Percent	0.0	0.0	0.0	0.0	4.0	0.0	95.0	1.0	100.0
STEC NON0157	Cases	-	-	-	-	-	-	-	-	-
	Percent	-	-	-	-	-	-	-	-	-
VIBRIO	Cases	-	1	-	-	1	-	-	-	2
	Percent	0.0	50.0	0.0	0.0	50.0	0.0	0.0	0.0	100.0
YERSINIA	Cases	-	1	-	-	-	-	8	1	10
	Percent	0.0	10.0	0.0	0.0	0.0	0.0	80.0	10.0	100.0
Total	Cases	3	24	-	-	67	1	718	23	836
	Percent	0.4	2.9	0.0	0.0	8.0	0.1	85.9	2.8	100.0

CDC's Emerging Infections Program (FoodNet)  
 FoodNet 2001 Final Report  
 Table 13 - Patient Status by Pathogen for All Sites

		Patient Status			Total
		HOSPITALIZED	OUTPATIENT	UNKNOWN	
Pathogen					
CAMPYLOBACTER	Cases	534	3634	583	4751
	Percent	11.2	76.5	12.3	100.0
CRYPTOSPORIDIUM	Cases	133	389	53	575
	Percent	23.1	67.7	9.2	100.0
CYCLOSPORA	Cases	0	9	23	32
	Percent	0	28.1	71.9	100.0
E. COLI 0157	Cases	214	321	25	560
	Percent	38.2	57.3	4.5	100.0
LISTERIA	Cases	81	2	11	94
	Percent	86.2	2.1	11.7	100.0
SALMONELLA	Cases	929	3060	1251	5240
	Percent	17.7	58.4	23.9	100.0
SHIGELLA	Cases	268	1680	271	2219
	Percent	12.1	75.7	12.2	100.0
STEC NON0157	Cases	5	52	4	61
	Percent	8.2	85.2	6.6	100.0
VIBRIO	Cases	23	48	8	79
	Percent	29.1	60.8	10.1	100.0
YERSINIA	Cases	38	83	23	144
	Percent	26.4	57.6	16.0	100.0
Total	Cases	2225	9278	2252	13755
	Percent	16.2	67.5	16.4	100.0

CDC's Emerging Infections Program (FoodNet)  
FoodNet 2001 Final Report  
Tables 13a through 13i - Patient Status by Pathogen by Site

Table 13a: Site = California		Patient Status			Total
		HOSPITALIZED	OUTPATIENT	UNKNOWN	
Pathogen					
CAMPYLOBACTER	Cases	87	747	165	999
	Percent	8.7	74.8	16.5	100.0
CRYPTOSPORIDIUM	Cases	10	44	6	60
	Percent	16.7	73.3	10.0	100.0
CYCLOSPORA	Cases	-	-	-	-
	Percent	-	-	-	-
E. COLI O157	Cases	11	22	3	36
	Percent	30.6	61.1	8.3	100.0
LISTERIA	Cases	16	-	-	16
	Percent	100.0	0.0	0.0	100.0
SALMONELLA	Cases	81	365	34	480
	Percent	16.9	76.0	7.1	100.0
SHIGELLA	Cases	40	364	23	427
	Percent	9.4	85.2	5.4	100.0
STEC NONO157	Cases	-	-	-	-
	Percent	-	-	-	-
VIBRIO	Cases	3	13	-	16
	Percent	18.8	81.3	0.0	100.0
YERSINIA	Cases	4	12	1	17
	Percent	23.5	70.6	5.9	100.0
Total	Cases	252	1567	232	2051
	Percent	12.3	76.4	11.3	100.0

CDC's Emerging Infections Program (FoodNet)  
 FoodNet 2001 Final Report  
 Tables 13a through 13i - Patient Status by Pathogen by Site

Table 13b: Site = Colorado		Patient Status			Total
		HOSPITALIZED	OUTPATIENT	UNKNOWN	
Pathogen					
CAMPYLOBACTER	Cases	34	248	61	343
	Percent	9.9	72.3	17.8	100.0
CRYPTOSPORIDIUM	Cases	5	8	1	14
	Percent	35.7	57.1	7.1	100.0
CYCLOSPORA	Cases	-	-	-	-
	Percent	-	-	-	-
E. COLI O157	Cases	15	16	6	37
	Percent	40.5	43.2	16.2	100.0
LISTERIA	Cases	2	-	3	5
	Percent	40.0	0.0	60.0	100.0
SALMONELLA	Cases	48	201	68	317
	Percent	15.1	63.4	21.5	100.0
SHIGELLA	Cases	19	104	21	144
	Percent	13.2	72.2	14.6	100.0
STEC NONO157	Cases	-	1	3	4
	Percent	0.0	25.0	75.0	100.0
VIBRIO	Cases	-	4	1	5
	Percent	0.0	80.0	20.0	100.0
YERSINIA	Cases	3	2	4	9
	Percent	33.3	22.2	44.4	100.0
Total	Cases	126	584	168	878
	Percent	14.4	66.5	19.1	100.0



CDC's Emerging Infections Program (FoodNet)  
 FoodNet 2001 Final Report  
 Tables 13a through 13i - Patient Status by Pathogen by Site

Table 13c: Site = Connecticut		Patient Status			Total
		HOSPITALIZED	OUTPATIENT	UNKNOWN	
Pathogen					
CAMPYLOBACTER	Cases	51	437	7	495
	Percent	10.3	88.3	1.4	100.0
CRYPTOSPORIDIUM	Cases	3	14	-	17
	Percent	17.6	82.4	0.0	100.0
CYCLOSPORA	Cases	-	4	-	4
	Percent	0.0	100.0	0.0	100.0
E. COLI O157	Cases	13	26	-	39
	Percent	33.3	66.7	0.0	100.0
LISTERIA	Cases	14	1	-	15
	Percent	93.3	6.7	0.0	100.0
SALMONELLA	Cases	99	351	4	454
	Percent	21.8	77.3	0.9	100.0
SHIGELLA	Cases	5	54	1	60
	Percent	8.3	90.0	1.7	100.0
STEC NONO157	Cases	3	21	-	24
	Percent	12.5	87.5	0.0	100.0
VIBRIO	Cases	3	6	-	9
	Percent	33.3	66.7	0.0	100.0
YERSINIA	Cases	3	6	-	9
	Percent	33.3	66.7	0.0	100.0
Total	Cases	194	920	12	1126
	Percent	17.2	81.7	1.1	100.0

CDC's Emerging Infections Program (FoodNet)  
 FoodNet 2001 Final Report  
 Tables 13a through 13i - Patient Status by Pathogen by Site

Table 13d: Site = Georgia		Patient Status			Total
		HOSPITALIZED	OUTPATIENT	UNKNOWN	
Pathogen					
CAMPYLOBACTER	Cases	45	270	299	614
	Percent	7.3	44.0	48.7	100.0
CRYPTOSPORIDIUM	Cases	42	78	39	159
	Percent	26.4	49.1	24.5	100.0
CYCLOSPORA	Cases	-	5	23	28
	Percent	0.0	17.9	82.1	100.0
E. COLI O157	Cases	22	26	2	50
	Percent	44.0	52.0	4.0	100.0
LISTERIA	Cases	9	-	7	16
	Percent	56.3	0.0	43.8	100.0
SALMONELLA	Cases	143	465	1067	1675
	Percent	8.5	27.8	63.7	100.0
SHIGELLA	Cases	69	494	151	714
	Percent	9.7	69.2	21.1	100.0
STEC NONO157	Cases	-	4	-	4
	Percent	0.0	100.0	0.0	100.0
VIBRIO	Cases	10	9	5	24
	Percent	41.7	37.5	20.8	100.0
YERSINIA	Cases	13	25	12	50
	Percent	26.0	50.0	24.0	100.0
Total	Cases	353	1376	1605	3334
	Percent	10.6	41.3	48.1	100.0

CDC's Emerging Infections Program (FoodNet)  
 FoodNet 2001 Final Report  
 Tables 13a through 13i - Patient Status by Pathogen by Site

Table 13e: Site = Maryland		Patient Status			Total
		HOSPITALIZED	OUTPATIENT	UNKNOWN	
Pathogen					
CAMPYLOBACTER	Cases	49	228	23	300
	Percent	16.3	76.0	7.7	100.0
CRYPTOSPORIDIUM	Cases	14	9	6	29
	Percent	48.3	31.0	20.7	100.0
CYCLOSPORA	Cases	-	-	-	-
	Percent	-	-	-	-
E. COLI O157	Cases	11	5	-	16
	Percent	68.8	31.3	0.0	100.0
LISTERIA	Cases	12	1	1	14
	Percent	85.7	7.1	7.1	100.0
SALMONELLA	Cases	147	443	32	622
	Percent	23.6	71.2	5.1	100.0
SHIGELLA	Cases	18	65	58	141
	Percent	12.8	46.1	41.1	100.0
STEC NONO157	Cases	-	-	-	-
	Percent	-	-	-	-
VIBRIO	Cases	4	8	1	13
	Percent	30.8	61.5	7.7	100.0
YERSINIA	Cases	1	8	3	12
	Percent	8.3	66.7	25.0	100.0
Total	Cases	256	767	124	1147
	Percent	22.3	66.9	10.8	100.0

CDC's Emerging Infections Program (FoodNet)  
 FoodNet 2001 Final Report  
 Tables 13a through 13i - Patient Status by Pathogen by Site

Table 13f: Site = Minnesota		Patient Status			Total
		HOSPITALIZED	OUTPATIENT	UNKNOWN	
Pathogen					
CAMPYLOBACTER	Cases	134	820	-	954
	Percent	14.0	86.0	0.0	100.0
CRYPTOSPORIDIUM	Cases	34	164	-	198
	Percent	17.2	82.8	0.0	100.0
CYCLOSPORA	Cases	-	-	-	-
	Percent	-	-	-	-
E. COLI O157	Cases	86	146	-	232
	Percent	37.1	62.9	0.0	100.0
LISTERIA	Cases	4	-	-	4
	Percent	100.0	0.0	0.0	100.0
SALMONELLA	Cases	168	525	-	693
	Percent	24.2	75.8	0.0	100.0
SHIGELLA	Cases	77	416	-	493
	Percent	15.6	84.4	0.0	100.0
STEC NONO157	Cases	2	22	-	24
	Percent	8.3	91.7	0.0	100.0
VIBRIO	Cases	2	1	-	3
	Percent	66.7	33.3	0.0	100.0
YERSINIA	Cases	8	11	-	19
	Percent	42.1	57.9	0.0	100.0
Total	Cases	515	2105	-	2620
	Percent	19.7	80.3	0.0	100.0

CDC's Emerging Infections Program (FoodNet)  
 FoodNet 2001 Final Report  
 Tables 13a through 13i - Patient Status by Pathogen by Site

Table 13g: Site = New York		Patient Status			Total
		HOSPITALIZED	OUTPATIENT	UNKNOWN	
Pathogen					
CAMPYLOBACTER	Cases	32	214	2	248
	Percent	12.9	86.3	0.8	100.0
CRYPTOSPORIDIUM	Cases	1	14	-	15
	Percent	6.7	93.3	0.0	100.0
CYCLOSPORA	Cases	-	-	-	-
	Percent	-	-	-	-
E. COLI O157	Cases	10	21	-	31
	Percent	32.3	67.7	0.0	100.0
LISTERIA	Cases	7	-	-	7
	Percent	100.0	0.0	0.0	100.0
SALMONELLA	Cases	54	216	1	271
	Percent	19.9	79.7	0.4	100.0
SHIGELLA	Cases	5	23	-	28
	Percent	17.9	82.1	0.0	100.0
STEC NONO157	Cases	-	-	-	-
	Percent	-	-	-	-
VIBRIO	Cases	-	2	-	2
	Percent	0.0	100.0	0.0	100.0
YERSINIA	Cases	-	6	-	6
	Percent	0.0	100.0	0.0	100.0
Total	Cases	109	496	3	608
	Percent	17.9	81.6	0.5	100.0

CDC's Emerging Infections Program (FoodNet)  
 FoodNet 2001 Final Report  
 Tables 13a through 13i - Patient Status by Pathogen by Site

Table 13h: Site = Oregon		Patient Status			Total
		HOSPITALIZED	OUTPATIENT	UNKNOWN	
Pathogen					
CAMPYLOBACTER	Cases	53	513	20	586
	Percent	9.0	87.5	3.4	100.0
CRYPTOSPORIDIUM	Cases	7	49	-	56
	Percent	12.5	87.5	0.0	100.0
CYCLOSPORA	Cases	-	-	-	-
	Percent	-	-	-	-
E. COLI O157	Cases	28	37	12	77
	Percent	36.4	48.1	15.6	100.0
LISTERIA	Cases	12	-	-	12
	Percent	100.0	0.0	0.0	100.0
SALMONELLA	Cases	45	214	31	290
	Percent	15.5	73.8	10.7	100.0
SHIGELLA	Cases	13	86	13	112
	Percent	11.6	76.8	11.6	100.0
STEC NONO157	Cases	-	4	1	5
	Percent	0.0	80.0	20.0	100.0
VIBRIO	Cases	-	5	-	5
	Percent	0.0	100.0	0.0	100.0
YERSINIA	Cases	2	8	2	12
	Percent	16.7	66.7	16.7	100.0
Total	Cases	160	916	79	1155
	Percent	13.9	79.3	6.8	100.0

CDC's Emerging Infections Program (FoodNet)  
 FoodNet 2001 Final Report  
 Tables 13a through 13i - Patient Status by Pathogen by Site

Table 13i: Site = Tennessee		Patient Status			Total
		HOSPITALIZED	OUTPATIENT	UNKNOWN	
Pathogen					
CAMPYLOBACTER	Cases	49	157	6	212
	Percent	23.1	74.1	2.8	100.0
CRYPTOSPORIDIUM	Cases	17	9	1	27
	Percent	63.0	33.3	3.7	100.0
CYCLOSPORA	Cases	-	-	-	-
	Percent	-	-	-	-
E. COLI O157	Cases	18	22	2	42
	Percent	42.9	52.4	4.8	100.0
LISTERIA	Cases	5	-	-	5
	Percent	100.0	0.0	0.0	100.0
SALMONELLA	Cases	144	280	14	438
	Percent	32.9	63.9	3.2	100.0
SHIGELLA	Cases	22	74	4	100
	Percent	22.0	74.0	4.0	100.0
STEC NONO157	Cases	-	-	-	-
	Percent	-	-	-	-
VIBRIO	Cases	1	-	1	2
	Percent	50.0	0.0	50.0	100.0
YERSINIA	Cases	4	5	1	10
	Percent	40.0	50.0	10.0	100.0
Total	Cases	260	547	29	836
	Percent	31.1	65.4	3.5	100.0

CDC's Emerging Infections Program (FoodNet)  
 FoodNet 2001 Final Report  
 Table 14 - Patient Outcome by Pathogen for All Sites

		Patient Outcome			Total
		ALIVE	DEAD	UNKNOWN	
Pathogen					
CAMPYLOBACTER	Cases	3240	6	1505	4751
	Percent	68.2	0.1	31.7	100.0
CRYPTOSPORIDIUM	Cases	454	2	119	575
	Percent	79.0	0.3	20.7	100.0
CYCLOSPORA	Cases	8	0	24	32
	Percent	25.0	0	75.0	100.0
E. COLI 0157	Cases	516	3	41	560
	Percent	92.1	0.5	7.3	100.0
LISTERIA	Cases	65	19	10	94
	Percent	69.1	20.2	10.6	100.0
SALMONELLA	Cases	3561	15	1664	5240
	Percent	68.0	0.3	31.8	100.0
SHIGELLA	Cases	1467	0	752	2219
	Percent	66.1	0	33.9	100.0
STEC NON0157	Cases	60	0	1	61
	Percent	98.4	0	1.6	100.0
VIBRIO	Cases	61	4	14	79
	Percent	77.2	5.1	17.7	100.0
YERSINIA	Cases	103	2	39	144
	Percent	71.5	1.4	27.1	100.0
Total	Cases	9535	51	4169	13755
	Percent	69.3	0.4	30.3	100.0



CDC's Emerging Infections Program (FoodNet)  
 FoodNet 2001 Final Report  
 Tables 14a through 14i - Patient Outcome by Pathogen by Site

Table 14a: Site = California		Patient Outcome			Total
		ALIVE	DEAD	UNKNOWN	
Pathogen					
CAMPYLOBACTER	Cases	345	2	652	999
	Percent	34.5	0.2	65.3	100.0
CRYPTOSPORIDIUM	Cases	39	-	21	60
	Percent	65.0	0.0	35.0	100.0
CYCLOSPORA	Cases	-	-	-	-
	Percent	-	-	-	-
E. COLI 0157	Cases	25	-	11	36
	Percent	69.4	0.0	30.6	100.0
LISTERIA	Cases	11	4	1	16
	Percent	68.8	25.0	6.3	100.0
SALMONELLA	Cases	266	1	213	480
	Percent	55.4	0.2	44.4	100.0
SHIGELLA	Cases	244	-	183	427
	Percent	57.1	0.0	42.9	100.0
STEC NON0157	Cases	-	-	-	-
	Percent	-	-	-	-
VIBRIO	Cases	7	1	8	16
	Percent	43.8	6.3	50.0	100.0
YERSINIA	Cases	14	-	3	17
	Percent	82.4	0.0	17.6	100.0
Total	Cases	951	8	1092	2051
	Percent	46.4	0.4	53.2	100.0

CDC's Emerging Infections Program (FoodNet)  
FoodNet 2001 Final Report  
Tables 14a through 14i - Patient Outcome by Pathogen by Site

Table 14b: Site = Colorado		Patient Outcome			Total
		ALIVE	DEAD	UNKNOWN	
Pathogen					
CAMPYLOBACTER	Cases	285	-	58	343
	Percent	83.1	0.0	16.9	100.0
CRYPTOSPORIDIUM	Cases	12	-	2	14
	Percent	85.7	0.0	14.3	100.0
CYCLOSPORA	Cases	-	-	-	-
	Percent	-	-	-	-
E. COLI 0157	Cases	32	-	5	37
	Percent	86.5	0.0	13.5	100.0
LISTERIA	Cases	2	1	2	5
	Percent	40.0	20.0	40.0	100.0
SALMONELLA	Cases	258	1	58	317
	Percent	81.4	0.3	18.3	100.0
SHIGELLA	Cases	105	-	39	144
	Percent	72.9	0.0	27.1	100.0
STEC NON0157	Cases	4	-	-	4
	Percent	100.0	0.0	0.0	100.0
VIBRIO	Cases	3	-	2	5
	Percent	60.0	0.0	40.0	100.0
YERSINIA	Cases	5	1	3	9
	Percent	55.6	11.1	33.3	100.0
Total	Cases	706	3	169	878
	Percent	80.4	0.3	19.2	100.0

CDC's Emerging Infections Program (FoodNet)  
FoodNet 2001 Final Report  
Tables 14a through 14i - Patient Outcome by Pathogen by Site

Table 14c: Site = Connecticut		Patient Outcome			Total
		ALIVE	DEAD	UNKNOWN	
Pathogen					
CAMPYLOBACTER	Cases	202	2	291	495
	Percent	40.8	0.4	58.8	100.0
CRYPTOSPORIDIUM	Cases	8	-	9	17
	Percent	47.1	0.0	52.9	100.0
CYCLOSPORA	Cases	3	-	1	4
	Percent	75.0	0.0	25.0	100.0
E. COLI 0157	Cases	39	-	-	39
	Percent	100.0	0.0	0.0	100.0
LISTERIA	Cases	10	5	-	15
	Percent	66.7	33.3	0.0	100.0
SALMONELLA	Cases	337	3	114	454
	Percent	74.2	0.7	25.1	100.0
SHIGELLA	Cases	23	-	37	60
	Percent	38.3	0.0	61.7	100.0
STEC NON0157	Cases	24	-	-	24
	Percent	100.0	0.0	0.0	100.0
VIBRIO	Cases	9	-	-	9
	Percent	100.0	0.0	0.0	100.0
YERSINIA	Cases	7	-	2	9
	Percent	77.8	0.0	22.2	100.0
Total	Cases	662	10	454	1126
	Percent	58.8	0.9	40.3	100.0

CDC's Emerging Infections Program (FoodNet)  
FoodNet 2001 Final Report  
Tables 14a through 14i - Patient Outcome by Pathogen by Site

Table 14d: Site = Georgia		Patient Outcome			Total
		ALIVE	DEAD	UNKNOWN	
Pathogen					
CAMPYLOBACTER	Cases	200	-	414	614
	Percent	32.6	0.0	67.4	100.0
CRYPTOSPORIDIUM	Cases	94	2	63	159
	Percent	59.1	1.3	39.6	100.0
CYCLOSPORA	Cases	5	-	23	28
	Percent	17.9	0.0	82.1	100.0
E. COLI 0157	Cases	44	-	6	50
	Percent	88.0	0.0	12.0	100.0
LISTERIA	Cases	8	2	6	16
	Percent	50.0	12.5	37.5	100.0
SALMONELLA	Cases	447	3	1225	1675
	Percent	26.7	0.2	73.1	100.0
SHIGELLA	Cases	294	-	420	714
	Percent	41.2	0.0	58.8	100.0
STEC NON0157	Cases	4	-	-	4
	Percent	100.0	0.0	0.0	100.0
VIBRIO	Cases	18	3	3	24
	Percent	75.0	12.5	12.5	100.0
YERSINIA	Cases	23	-	27	50
	Percent	46.0	0.0	54.0	100.0
Total	Cases	1137	10	2187	3334
	Percent	34.1	0.3	65.6	100.0

CDC's Emerging Infections Program (FoodNet)  
 FoodNet 2001 Final Report  
 Tables 14a through 14i - Patient Outcome by Pathogen by Site

Table 14e: Site = Maryland		Patient Outcome			Total
		ALIVE	DEAD	UNKNOWN	
Pathogen					
CAMPYLOBACTER	Cases	292	-	8	300
	Percent	97.3	0.0	2.7	100.0
CRYPTOSPORIDIUM	Cases	28	-	1	29
	Percent	96.6	0.0	3.4	100.0
CYCLOSPORA	Cases	-	-	-	-
	Percent	-	-	-	-
E. COLI 0157	Cases	16	-	-	16
	Percent	100.0	0.0	0.0	100.0
LISTERIA	Cases	13	1	-	14
	Percent	92.9	7.1	0.0	100.0
SALMONELLA	Cases	617	-	5	622
	Percent	99.2	0.0	0.8	100.0
SHIGELLA	Cases	88	-	53	141
	Percent	62.4	0.0	37.6	100.0
STEC NON0157	Cases	-	-	-	-
	Percent	-	-	-	-
VIBRIO	Cases	13	-	-	13
	Percent	100.0	0.0	0.0	100.0
YERSINIA	Cases	11	-	1	12
	Percent	91.7	0.0	8.3	100.0
Total	Cases	1078	1	68	1147
	Percent	94.0	0.1	5.9	100.0

CDC's Emerging Infections Program (FoodNet)  
FoodNet 2001 Final Report  
Tables 14a through 14i - Patient Outcome by Pathogen by Site

Table 14f: Site = Minnesota		Patient Outcome			Total
		ALIVE	DEAD	UNKNOWN	
Pathogen					
CAMPYLOBACTER	Cases	953	1	-	954
	Percent	99.9	0.1	0.0	100.0
CRYPTOSPORIDIUM	Cases	198	-	-	198
	Percent	100.0	0.0	0.0	100.0
CYCLOSPORA	Cases	-	-	-	-
	Percent	-	-	-	-
E. COLI 0157	Cases	230	2	-	232
	Percent	99.1	0.9	0.0	100.0
LISTERIA	Cases	4	-	-	4
	Percent	100.0	0.0	0.0	100.0
SALMONELLA	Cases	689	4	-	693
	Percent	99.4	0.6	0.0	100.0
SHIGELLA	Cases	493	-	-	493
	Percent	100.0	0.0	0.0	100.0
STEC NON0157	Cases	24	-	-	24
	Percent	100.0	0.0	0.0	100.0
VIBRIO	Cases	3	-	-	3
	Percent	100.0	0.0	0.0	100.0
YERSINIA	Cases	18	1	-	19
	Percent	94.7	5.3	0.0	100.0
Total	Cases	2612	8	-	2620
	Percent	99.7	0.3	0.0	100.0

CDC's Emerging Infections Program (FoodNet)  
FoodNet 2001 Final Report  
Tables 14a through 14i - Patient Outcome by Pathogen by Site

Table 14g: Site = New York		Patient Outcome			Total
		ALIVE	DEAD	UNKNOWN	
Pathogen					
CAMPYLOBACTER	Cases	246	-	2	248
	Percent	99.2	0.0	0.8	100.0
CRYPTOSPORIDIUM	Cases	14	-	1	15
	Percent	93.3	0.0	6.7	100.0
CYCLOSPORA	Cases	-	-	-	-
	Percent	-	-	-	-
E. COLI 0157	Cases	31	-	-	31
	Percent	100.0	0.0	0.0	100.0
LISTERIA	Cases	5	2	-	7
	Percent	71.4	28.6	0.0	100.0
SALMONELLA	Cases	270	1	-	271
	Percent	99.6	0.4	0.0	100.0
SHIGELLA	Cases	28	-	-	28
	Percent	100.0	0.0	0.0	100.0
STEC NON0157	Cases	-	-	-	-
	Percent	-	-	-	-
VIBRIO	Cases	2	-	-	2
	Percent	100.0	0.0	0.0	100.0
YERSINIA	Cases	6	-	-	6
	Percent	100.0	0.0	0.0	100.0
Total	Cases	602	3	3	608
	Percent	99.0	0.5	0.5	100.0

CDC's Emerging Infections Program (FoodNet)  
 FoodNet 2001 Final Report  
 Tables 14a through 14i - Patient Outcome by Pathogen by Site

Table 14h: Site = Oregon		Patient Outcome			Total
		ALIVE	DEAD	UNKNOWN	
Pathogen					
CAMPYLOBACTER	Cases	515	1	70	586
	Percent	87.9	0.2	11.9	100.0
CRYPTOSPORIDIUM	Cases	49	-	7	56
	Percent	87.5	0.0	12.5	100.0
CYCLOSPORA	Cases	-	-	-	-
	Percent	-	-	-	-
E. COLI 0157	Cases	59	1	17	77
	Percent	76.6	1.3	22.1	100.0
LISTERIA	Cases	9	2	1	12
	Percent	75.0	16.7	8.3	100.0
SALMONELLA	Cases	257	-	33	290
	Percent	88.6	0.0	11.4	100.0
SHIGELLA	Cases	97	-	15	112
	Percent	86.6	0.0	13.4	100.0
STEC NON0157	Cases	4	-	1	5
	Percent	80.0	0.0	20.0	100.0
VIBRIO	Cases	5	-	-	5
	Percent	100.0	0.0	0.0	100.0
YERSINIA	Cases	10	-	2	12
	Percent	83.3	0.0	16.7	100.0
Total	Cases	1005	4	146	1155
	Percent	87.0	0.3	12.6	100.0



CDC's Emerging Infections Program (FoodNet)  
FoodNet 2001 Final Report  
Tables 14a through 14i - Patient Outcome by Pathogen by Site

Table 14i: Site = Tennessee		Patient Outcome			Total
		ALIVE	DEAD	UNKNOWN	
Pathogen					
CAMPYLOBACTER	Cases	202	-	10	212
	Percent	95.3	0.0	4.7	100.0
CRYPTOSPORIDIUM	Cases	12	-	15	27
	Percent	44.4	0.0	55.6	100.0
CYCLOSPORA	Cases	-	-	-	-
	Percent	-	-	-	-
E. COLI 0157	Cases	40	-	2	42
	Percent	95.2	0.0	4.8	100.0
LISTERIA	Cases	3	2	-	5
	Percent	60.0	40.0	0.0	100.0
SALMONELLA	Cases	420	2	16	438
	Percent	95.9	0.5	3.7	100.0
SHIGELLA	Cases	95	-	5	100
	Percent	95.0	0.0	5.0	100.0
STEC NON0157	Cases	-	-	-	-
	Percent	-	-	-	-
VIBRIO	Cases	1	-	1	2
	Percent	50.0	0.0	50.0	100.0
YERSINIA	Cases	9	-	1	10
	Percent	90.0	0.0	10.0	100.0
Total	Cases	782	4	50	836
	Percent	93.5	0.5	6.0	100.0

CDC's Emerging Infections Program (FoodNet)  
 FoodNet 2001 Final Report  
 Table 15 - Age Distribution for Invasive Specimens for All Sites

		Age Specific Strata								Total
		0-<1 YR	1-<10 YRS	10-<20 YRS	20-<30 YRS	30-<40 YRS	40-<50 YRS	50-<60 YRS	60+ YRS	
Pathogen										
CAMPYLOBACTER	Cases	0	1	2	6	12	6	6	13	46
	Percent	0	2.2	4.3	13.0	26.1	13.0	13.0	28.3	100.0
LISTERIA	Cases	9	2	1	3	9	2	6	53	85
	Percent	10.6	2.4	1.2	3.5	10.6	2.4	7.1	62.4	100.0
SALMONELLA	Cases	28	56	23	28	48	34	16	63	296
	Percent	9.5	18.9	7.8	9.5	16.2	11.5	5.4	21.3	100.0
SHIGELLA	Cases	0	0	0	2	6	5	0	1	14
	Percent	0	0	0	14.3	42.9	35.7	0	7.1	100.0
VIBRIO	Cases	1	0	0	0	0	4	4	4	13
	Percent	7.7	0	0	0	0	30.8	30.8	30.8	100.0
YERSINIA	Cases	3	1	0	0	1	1	0	2	8
	Percent	37.5	12.5	0	0	12.5	12.5	0	25.0	100.0
Total	Cases	41	60	26	39	76	52	32	136	462
	Percent	8.9	13.0	5.6	8.4	16.5	11.3	6.9	29.4	100.0

CDC's Emerging Infections Program (FoodNet)  
 FoodNet 2001 Final Report  
 Tables 15a through 15i - Age Distribution for Invasive Specimens by Site

Table 15a: Site = California		Age Specific Strata								Total
		0-<1 YR	1-<10 YRS	10-<20 YRS	20-<30 YRS	30-<40 YRS	40-<50 YRS	50-<60 YRS	60+ YRS	
Pathogen										
CAMPYLOBACTER	Cases	-	-	-	1	2	1	1	-	5
	Percent	0.0	0.0	0.0	20.0	40.0	20.0	20.0	0.0	100.0
LISTERIA	Cases	2	-	-	1	4	-	1	5	13
	Percent	15.4	0.0	0.0	7.7	30.8	0.0	7.7	38.5	100.0
SALMONELLA	Cases	2	6	3	9	9	2	1	12	44
	Percent	4.5	13.6	6.8	20.5	20.5	4.5	2.3	27.3	100.0
SHIGELLA	Cases	-	-	-	-	1	2	-	1	4
	Percent	0.0	0.0	0.0	0.0	25.0	50.0	0.0	25.0	100.0
VIBRIO	Cases	-	-	-	-	-	-	-	-	-
	Percent	-	-	-	-	-	-	-	-	-
YERSINIA	Cases	-	-	-	-	-	1	-	-	1
	Percent	0.0	0.0	0.0	0.0	0.0	100.0	0.0	0.0	100.0
Total	Cases	4	6	3	11	16	6	3	18	67
	Percent	6.0	9.0	4.5	16.4	23.9	9.0	4.5	26.9	100.0

CDC's Emerging Infections Program (FoodNet)  
 FoodNet 2001 Final Report  
 Tables 15a through 15i - Age Distribution for Invasive Specimens by Site

Table 15b: Site = Colorado		Age Specific Strata								Total
		0-<1 YR	1-<10 YRS	10-<20 YRS	20-<30 YRS	30-<40 YRS	40-<50 YRS	50-<60 YRS	60+ YRS	
Pathogen										
CAMPYLOBACTER	Cases	-	1	-	-	1	1	-	2	5
	Percent	0.0	20.0	0.0	0.0	20.0	20.0	0.0	40.0	100.0
LISTERIA	Cases	-	-	-	-	-	-	-	2	2
	Percent	0.0	0.0	0.0	0.0	0.0	0.0	0.0	100.0	100.0
SALMONELLA	Cases	-	5	2	-	4	2	-	1	14
	Percent	0.0	35.7	14.3	0.0	28.6	14.3	0.0	7.1	100.0
SHIGELLA	Cases	-	-	-	-	1	1	-	-	2
	Percent	0.0	0.0	0.0	0.0	50.0	50.0	0.0	0.0	100.0
VIBRIO	Cases	-	-	-	-	-	-	-	1	1
	Percent	0.0	0.0	0.0	0.0	0.0	0.0	0.0	100.0	100.0
YERSINIA	Cases	1	-	-	-	-	-	-	-	1
	Percent	100.0	0.0	0.0	0.0	0.0	0.0	0.0	0.0	100.0
Total	Cases	1	6	2	-	6	4	-	6	25
	Percent	4.0	24.0	8.0	0.0	24.0	16.0	0.0	24.0	100.0

CDC's Emerging Infections Program (FoodNet)  
 FoodNet 2001 Final Report  
 Tables 15a through 15i - Age Distribution for Invasive Specimens by Site

Table 15c: Site = Connecticut		Age Specific Strata								Total
		0-<1 YR	1-<10 YRS	10-<20 YRS	20-<30 YRS	30-<40 YRS	40-<50 YRS	50-<60 YRS	60+ YRS	
Pathogen										
CAMPYLOBACTER	Cases	-	-	-	-	1	1	1	2	5
	Percent	0.0	0.0	0.0	0.0	20.0	20.0	20.0	40.0	100.0
LISTERIA	Cases	-	-	-	-	-	-	2	12	14
	Percent	0.0	0.0	0.0	0.0	0.0	0.0	14.3	85.7	100.0
SALMONELLA	Cases	3	7	2	2	3	2	1	7	27
	Percent	11.1	25.9	7.4	7.4	11.1	7.4	3.7	25.9	100.0
SHIGELLA	Cases	-	-	-	-	-	-	-	-	-
	Percent	-	-	-	-	-	-	-	-	-
VIBRIO	Cases	-	-	-	-	-	-	1	1	2
	Percent	0.0	0.0	0.0	0.0	0.0	0.0	50.0	50.0	100.0
YERSINIA	Cases	-	-	-	-	-	-	-	-	-
	Percent	-	-	-	-	-	-	-	-	-
Total	Cases	3	7	2	2	4	3	5	22	48
	Percent	6.3	14.6	4.2	4.2	8.3	6.3	10.4	45.8	100.0

CDC's Emerging Infections Program (FoodNet)  
 FoodNet 2001 Final Report  
 Tables 15a through 15i - Age Distribution for Invasive Specimens by Site

Table 15d: Site = Georgia		Age Specific Strata								Total
		0-<1 YR	1-<10 YRS	10-<20 YRS	20-<30 YRS	30-<40 YRS	40-<50 YRS	50-<60 YRS	60+ YRS	
Pathogen										
CAMPYLOBACTER	Cases	-	-	-	5	4	2	-	2	13
	Percent	0.0	0.0	0.0	38.5	30.8	15.4	0.0	15.4	100.0
LISTERIA	Cases	2	2	1	-	-	1	1	9	16
	Percent	12.5	12.5	6.3	0.0	0.0	6.3	6.3	56.3	100.0
SALMONELLA	Cases	8	12	8	5	13	11	5	20	82
	Percent	9.8	14.6	9.8	6.1	15.9	13.4	6.1	24.4	100.0
SHIGELLA	Cases	-	-	-	1	4	1	-	-	6
	Percent	0.0	0.0	0.0	16.7	66.7	16.7	0.0	0.0	100.0
VIBRIO	Cases	1	-	-	-	-	3	2	2	8
	Percent	12.5	0.0	0.0	0.0	0.0	37.5	25.0	25.0	100.0
YERSINIA	Cases	1	1	-	-	-	-	-	1	3
	Percent	33.3	33.3	0.0	0.0	0.0	0.0	0.0	33.3	100.0
Total	Cases	12	15	9	11	21	18	8	34	128
	Percent	9.4	11.7	7.0	8.6	16.4	14.1	6.3	26.6	100.0

CDC's Emerging Infections Program (FoodNet)  
 FoodNet 2001 Final Report  
 Tables 15a through 15i - Age Distribution for Invasive Specimens by Site

Table 15e: Site = Maryland		Age Specific Strata								Total
		0-<1 YR	1-<10 YRS	10-<20 YRS	20-<30 YRS	30-<40 YRS	40-<50 YRS	50-<60 YRS	60+ YRS	
Pathogen										
CAMPYLOBACTER	Cases	-	-	-	-	1	-	1	-	2
	Percent	0.0	0.0	0.0	0.0	50.0	0.0	50.0	0.0	100.0
LISTERIA	Cases	1	-	-	1	3	-	-	9	14
	Percent	7.1	0.0	0.0	7.1	21.4	0.0	0.0	64.3	100.0
SALMONELLA	Cases	8	5	5	3	8	11	4	5	49
	Percent	16.3	10.2	10.2	6.1	16.3	22.4	8.2	10.2	100.0
SHIGELLA	Cases	-	-	-	1	-	1	-	-	2
	Percent	0.0	0.0	0.0	50.0	0.0	50.0	0.0	0.0	100.0
VIBRIO	Cases	-	-	-	-	-	-	1	-	1
	Percent	0.0	0.0	0.0	0.0	0.0	0.0	100.0	0.0	100.0
YERSINIA	Cases	-	-	-	-	-	-	-	-	-
	Percent	-	-	-	-	-	-	-	-	-
Total	Cases	9	5	5	5	12	12	6	14	68
	Percent	13.2	7.4	7.4	7.4	17.6	17.6	8.8	20.6	100.0

CDC's Emerging Infections Program (FoodNet)  
 FoodNet 2001 Final Report  
 Tables 15a through 15i - Age Distribution for Invasive Specimens by Site

Table 15f: Site = Minnesota		Age Specific Strata								Total
		0-<1 YR	1-<10 YRS	10-<20 YRS	20-<30 YRS	30-<40 YRS	40-<50 YRS	50-<60 YRS	60+ YRS	
Pathogen										
CAMPYLOBACTER	Cases	-	-	2	-	1	-	1	2	6
	Percent	0.0	0.0	33.3	0.0	16.7	0.0	16.7	33.3	100.0
LISTERIA	Cases	-	-	-	-	-	-	-	4	4
	Percent	0.0	0.0	0.0	0.0	0.0	0.0	0.0	100.0	100.0
SALMONELLA	Cases	1	5	-	5	5	4	4	10	34
	Percent	2.9	14.7	0.0	14.7	14.7	11.8	11.8	29.4	100.0
SHIGELLA	Cases	-	-	-	-	-	-	-	-	-
	Percent	-	-	-	-	-	-	-	-	-
VIBRIO	Cases	-	-	-	-	-	-	-	-	-
	Percent	-	-	-	-	-	-	-	-	-
YERSINIA	Cases	-	-	-	-	-	-	-	-	-
	Percent	-	-	-	-	-	-	-	-	-
Total	Cases	1	5	2	5	6	4	5	16	44
	Percent	2.3	11.4	4.5	11.4	13.6	9.1	11.4	36.4	100.0



CDC's Emerging Infections Program (FoodNet)  
 FoodNet 2001 Final Report  
 Tables 15a through 15i - Age Distribution for Invasive Specimens by Site

Table 15g: Site = New York		Age Specific Strata								Total
		0-<1 YR	1-<10 YRS	10-<20 YRS	20-<30 YRS	30-<40 YRS	40-<50 YRS	50-<60 YRS	60+ YRS	
Pathogen										
CAMPYLOBACTER	Cases	-	-	-	-	-	-	-	2	2
	Percent	0.0	0.0	0.0	0.0	0.0	0.0	0.0	100.0	100.0
LISTERIA	Cases	1	-	-	-	-	-	1	5	7
	Percent	14.3	0.0	0.0	0.0	0.0	0.0	14.3	71.4	100.0
SALMONELLA	Cases	1	4	-	2	-	1	-	2	10
	Percent	10.0	40.0	0.0	20.0	0.0	10.0	0.0	20.0	100.0
SHIGELLA	Cases	-	-	-	-	-	-	-	-	-
	Percent	-	-	-	-	-	-	-	-	-
VIBRIO	Cases	-	-	-	-	-	-	-	-	-
	Percent	-	-	-	-	-	-	-	-	-
YERSINIA	Cases	-	-	-	-	-	-	-	-	-
	Percent	-	-	-	-	-	-	-	-	-
Total	Cases	2	4	-	2	-	1	1	9	19
	Percent	10.5	21.1	0.0	10.5	0.0	5.3	5.3	47.4	100.0

CDC's Emerging Infections Program (FoodNet)  
 FoodNet 2001 Final Report  
 Tables 15a through 15i - Age Distribution for Invasive Specimens by Site

Table 15h: Site = Oregon		Age Specific Strata								Total
		0-<1 YR	1-<10 YRS	10-<20 YRS	20-<30 YRS	30-<40 YRS	40-<50 YRS	50-<60 YRS	60+ YRS	
Pathogen										
CAMPYLOBACTER	Cases	-	-	-	-	2	1	2	2	7
	Percent	0.0	0.0	0.0	0.0	28.6	14.3	28.6	28.6	100.0
LISTERIA	Cases	2	-	-	1	1	1	1	5	11
	Percent	18.2	0.0	0.0	9.1	9.1	9.1	9.1	45.5	100.0
SALMONELLA	Cases	1	5	3	1	4	1	1	3	19
	Percent	5.3	26.3	15.8	5.3	21.1	5.3	5.3	15.8	100.0
SHIGELLA	Cases	-	-	-	-	-	-	-	-	-
	Percent	-	-	-	-	-	-	-	-	-
VIBRIO	Cases	-	-	-	-	-	-	-	-	-
	Percent	-	-	-	-	-	-	-	-	-
YERSINIA	Cases	-	-	-	-	1	-	-	1	2
	Percent	0.0	0.0	0.0	0.0	50.0	0.0	0.0	50.0	100.0
Total	Cases	3	5	3	2	8	3	4	11	39
	Percent	7.7	12.8	7.7	5.1	20.5	7.7	10.3	28.2	100.0

CDC's Emerging Infections Program (FoodNet)  
 FoodNet 2001 Final Report  
 Tables 15a through 15i - Age Distribution for Invasive Specimens by Site

Table 15i: Site = Tennessee		Age Specific Strata								Total
		0-<1 YR	1-<10 YRS	10-<20 YRS	20-<30 YRS	30-<40 YRS	40-<50 YRS	50-<60 YRS	60+ YRS	
Pathogen										
CAMPYLOBACTER	Cases	-	-	-	-	-	-	-	1	1
	Percent	0.0	0.0	0.0	0.0	0.0	0.0	0.0	100.0	100.0
LISTERIA	Cases	1	-	-	-	1	-	-	2	4
	Percent	25.0	0.0	0.0	0.0	25.0	0.0	0.0	50.0	100.0
SALMONELLA	Cases	4	7	-	1	2	-	-	3	17
	Percent	23.5	41.2	0.0	5.9	11.8	0.0	0.0	17.6	100.0
SHIGELLA	Cases	-	-	-	-	-	-	-	-	-
	Percent	-	-	-	-	-	-	-	-	-
VIBRIO	Cases	-	-	-	-	-	1	-	-	1
	Percent	0.0	0.0	0.0	0.0	0.0	100.0	0.0	0.0	100.0
YERSINIA	Cases	1	-	-	-	-	-	-	-	1
	Percent	100.0	0.0	0.0	0.0	0.0	0.0	0.0	0.0	100.0
Total	Cases	6	7	-	1	3	1	-	6	24
	Percent	25.0	29.2	0.0	4.2	12.5	4.2	0.0	25.0	100.0

CDC's Emerging Infections Program (FoodNet)  
 FoodNet 2001 Final Report  
 Table 16 - Sex Distribution for Invasive Specimens for All Sites

		SEX		Total
		F	M	
Pathogen				
CAMPYLOBACTER	Cases	14	31	45
	Percent	31.1	68.9	100.0
LISTERIA	Cases	45	39	84
	Percent	53.6	46.4	100.0
SALMONELLA	Cases	132	162	294
	Percent	44.9	55.1	100.0
SHIGELLA	Cases	5	9	14
	Percent	35.7	64.3	100.0
VIBRIO	Cases	4	9	13
	Percent	30.8	69.2	100.0
YERSINIA	Cases	5	3	8
	Percent	62.5	37.5	100.0
Total	Cases	205	253	458
	Percent	44.8	55.2	100.0

CDC's Emerging Infections Program (FoodNet)  
 FoodNet 2001 Final Report  
 Tables 16a through 16i - Sex Distribution for Invasive Specimens by Site

Table 16a: Site = California		SEX		Total
		F	M	
Pathogen				
CAMPYLOBACTER	Cases	1	4	5
	Percent	20.0	80.0	100.0
LISTERIA	Cases	11	2	13
	Percent	84.6	15.4	100.0
SALMONELLA	Cases	20	24	44
	Percent	45.5	54.5	100.0
SHIGELLA	Cases	1	3	4
	Percent	25.0	75.0	100.0
VIBRIO	Cases	-	-	-
	Percent	-	-	-
YERSINIA	Cases	1	-	1
	Percent	100.0	0.0	100.0
Total	Cases	34	33	67
	Percent	50.7	49.3	100.0

CDC's Emerging Infections Program (FoodNet)  
 FoodNet 2001 Final Report  
 Tables 16a through 16i - Sex Distribution for Invasive Specimens by Site

Table 16b: Site = Colorado		SEX		Total
		F	M	
Pathogen				
CAMPYLOBACTER	Cases	3	2	5
	Percent	60.0	40.0	100.0
LISTERIA	Cases	1	1	2
	Percent	50.0	50.0	100.0
SALMONELLA	Cases	6	8	14
	Percent	42.9	57.1	100.0
SHIGELLA	Cases	-	2	2
	Percent	0.0	100.0	100.0
VIBRIO	Cases	-	1	1
	Percent	0.0	100.0	100.0
YERSINIA	Cases	-	1	1
	Percent	0.0	100.0	100.0
Total	Cases	10	15	25
	Percent	40.0	60.0	100.0

CDC's Emerging Infections Program (FoodNet)  
 FoodNet 2001 Final Report  
 Tables 16a through 16i - Sex Distribution for Invasive Specimens by Site

Table 16c: Site = Connecticut		SEX		Total
		F	M	
Pathogen				
CAMPYLOBACTER	Cases	2	3	5
	Percent	40.0	60.0	100.0
LISTERIA	Cases	5	9	14
	Percent	35.7	64.3	100.0
SALMONELLA	Cases	12	15	27
	Percent	44.4	55.6	100.0
SHIGELLA	Cases	-	-	-
	Percent	-	-	-
VIBRIO	Cases	1	1	2
	Percent	50.0	50.0	100.0
YERSINIA	Cases	-	-	-
	Percent	-	-	-
Total	Cases	20	28	48
	Percent	41.7	58.3	100.0

CDC's Emerging Infections Program (FoodNet)  
 FoodNet 2001 Final Report  
 Tables 16a through 16i - Sex Distribution for Invasive Specimens by Site

Table 16d: Site = Georgia		SEX		Total
		F	M	
Pathogen				
CAMPYLOBACTER	Cases	4	8	12
	Percent	33.3	66.7	100.0
LISTERIA	Cases	8	8	16
	Percent	50.0	50.0	100.0
SALMONELLA	Cases	36	45	81
	Percent	44.4	55.6	100.0
SHIGELLA	Cases	3	3	6
	Percent	50.0	50.0	100.0
VIBRIO	Cases	3	5	8
	Percent	37.5	62.5	100.0
YERSINIA	Cases	2	1	3
	Percent	66.7	33.3	100.0
Total	Cases	56	70	126
	Percent	44.4	55.6	100.0



CDC's Emerging Infections Program (FoodNet)  
 FoodNet 2001 Final Report  
 Tables 16a through 16i - Sex Distribution for Invasive Specimens by Site

Table 16e: Site = Maryland		SEX		Total
		F	M	
Pathogen				
CAMPYLOBACTER	Cases	1	1	2
	Percent	50.0	50.0	100.0
LISTERIA	Cases	9	5	14
	Percent	64.3	35.7	100.0
SALMONELLA	Cases	22	27	49
	Percent	44.9	55.1	100.0
SHIGELLA	Cases	1	1	2
	Percent	50.0	50.0	100.0
VIBRIO	Cases	-	1	1
	Percent	0.0	100.0	100.0
YERSINIA	Cases	-	-	-
	Percent	-	-	-
Total	Cases	33	35	68
	Percent	48.5	51.5	100.0

CDC's Emerging Infections Program (FoodNet)  
 FoodNet 2001 Final Report  
 Tables 16a through 16i - Sex Distribution for Invasive Specimens by Site

Table 16f: Site = Minnesota		SEX		Total
		F	M	
Pathogen				
CAMPYLOBACTER	Cases	1	5	6
	Percent	16.7	83.3	100.0
LISTERIA	Cases	1	3	4
	Percent	25.0	75.0	100.0
SALMONELLA	Cases	13	21	34
	Percent	38.2	61.8	100.0
SHIGELLA	Cases	-	-	-
	Percent	-	-	-
VIBRIO	Cases	-	-	-
	Percent	-	-	-
YERSINIA	Cases	-	-	-
	Percent	-	-	-
Total	Cases	15	29	44
	Percent	34.1	65.9	100.0

CDC's Emerging Infections Program (FoodNet)  
 FoodNet 2001 Final Report  
 Tables 16a through 16i - Sex Distribution for Invasive Specimens by Site

Table 16g: Site = New York		SEX		Total
		F	M	
Pathogen				
CAMPYLOBACTER	Cases	1	1	2
	Percent	50.0	50.0	100.0
LISTERIA	Cases	3	4	7
	Percent	42.9	57.1	100.0
SALMONELLA	Cases	4	6	10
	Percent	40.0	60.0	100.0
SHIGELLA	Cases	-	-	-
	Percent	-	-	-
VIBRIO	Cases	-	-	-
	Percent	-	-	-
YERSINIA	Cases	-	-	-
	Percent	-	-	-
Total	Cases	8	11	19
	Percent	42.1	57.9	100.0

CDC's Emerging Infections Program (FoodNet)  
 FoodNet 2001 Final Report  
 Tables 16a through 16i - Sex Distribution for Invasive Specimens by Site

Table 16h: Site = Oregon		SEX		Total
		F	M	
Pathogen				
CAMPYLOBACTER	Cases	1	6	7
	Percent	14.3	85.7	100.0
LISTERIA	Cases	6	5	11
	Percent	54.5	45.5	100.0
SALMONELLA	Cases	12	7	19
	Percent	63.2	36.8	100.0
SHIGELLA	Cases	-	-	-
	Percent	-	-	-
VIBRIO	Cases	-	-	-
	Percent	-	-	-
YERSINIA	Cases	1	1	2
	Percent	50.0	50.0	100.0
Total	Cases	20	19	39
	Percent	51.3	48.7	100.0

CDC's Emerging Infections Program (FoodNet)  
 FoodNet 2001 Final Report  
 Tables 16a through 16i - Sex Distribution for Invasive Specimens by Site

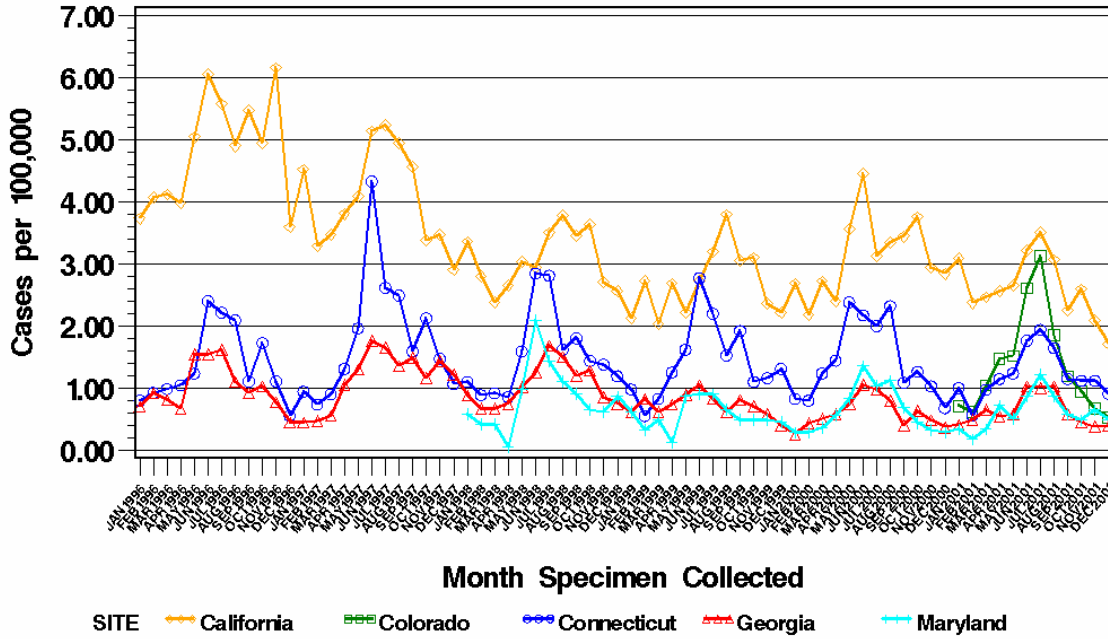
Table 16i: Site = Tennessee		SEX		Total
		F	M	
Pathogen				
CAMPYLOBACTER	Cases	-	1	1
	Percent	0.0	100.0	100.0
LISTERIA	Cases	1	2	3
	Percent	33.3	66.7	100.0
SALMONELLA	Cases	7	9	16
	Percent	43.8	56.3	100.0
SHIGELLA	Cases	-	-	-
	Percent	-	-	-
VIBRIO	Cases	-	1	1
	Percent	0.0	100.0	100.0
YERSINIA	Cases	1	-	1
	Percent	100.0	0.0	100.0
Total	Cases	9	13	22
	Percent	40.9	59.1	100.0

### CDC's Emerging Infections Program

CDC/USDA/FDA Foodborne Diseases Active Surveillance Network (FoodNet)

Rate per 100,000 per Month Postcensal Population Estimates

Pathogen = CAMPYLOBACTER



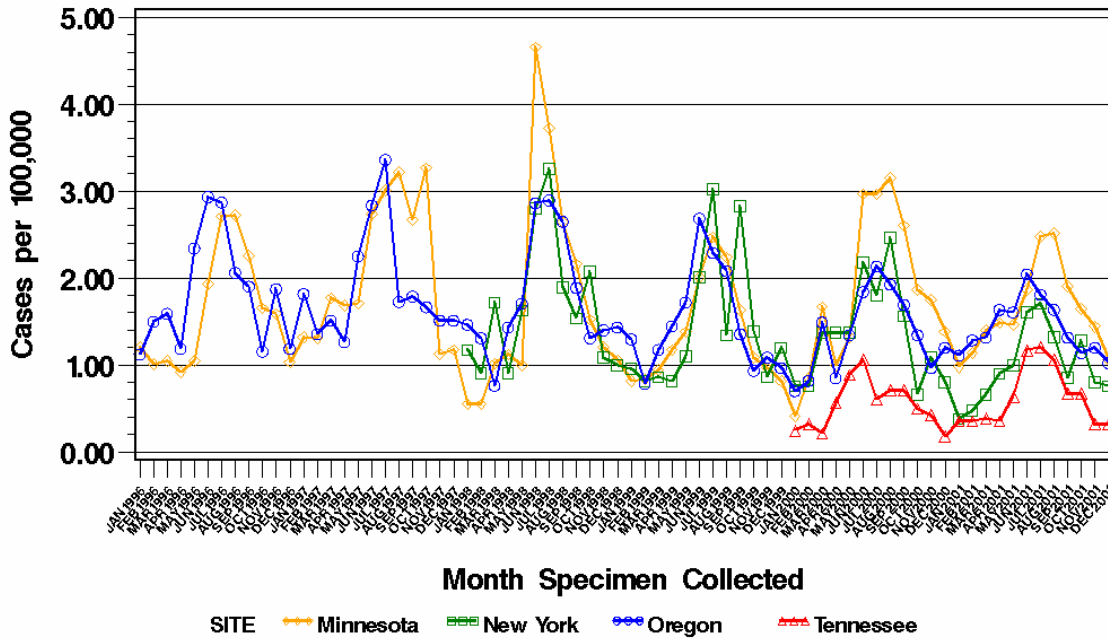
GRAPH1

### CDC's Emerging Infections Program

CDC/USDA/FDA Foodborne Diseases Active Surveillance Network (FoodNet)

Rate per 100,000 per Month Postcensal Population Estimates

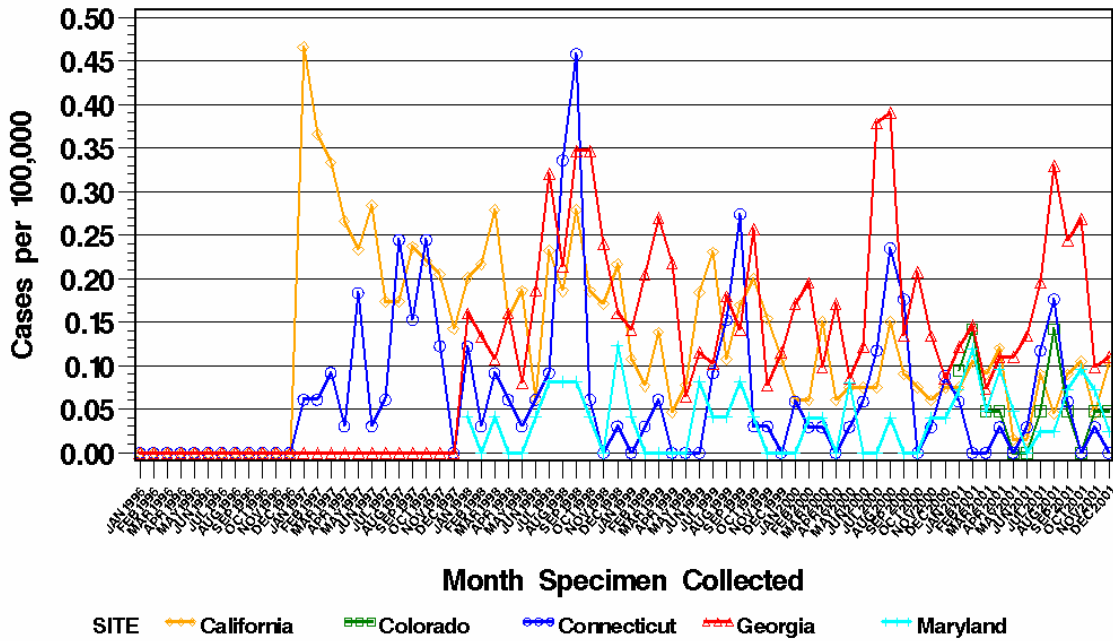
Pathogen = CAMPYLOBACTER



GRAPH1

### CDC's Emerging Infections Program

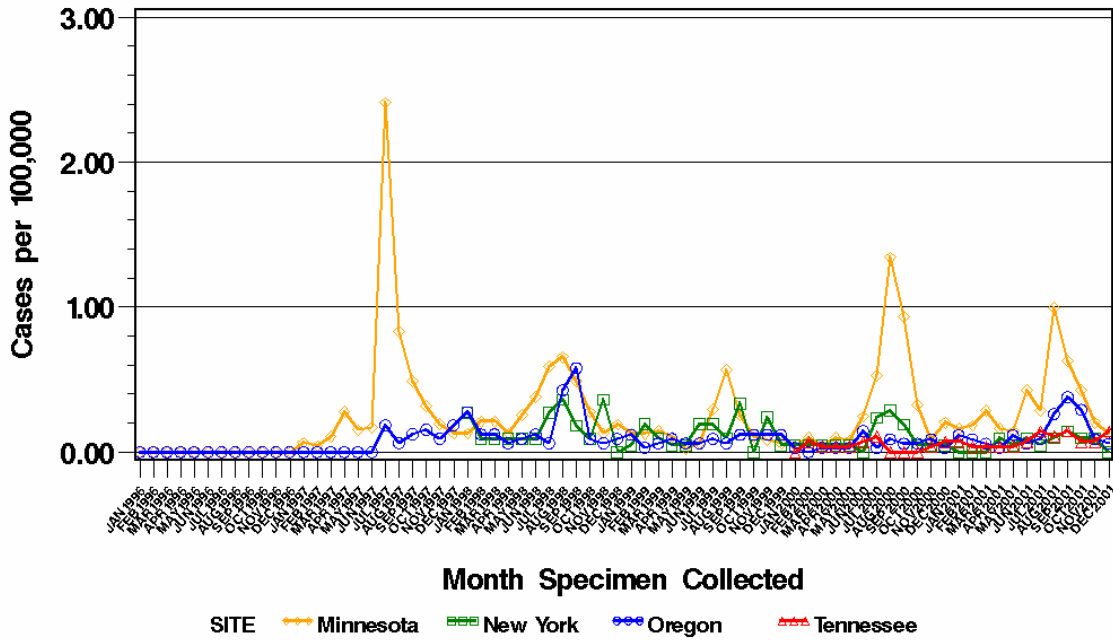
CDC/USDA/FDA Foodborne Diseases Active Surveillance Network (FoodNet)  
 Rate per 100,000 per Month Postcensal Population Estimates  
 Pathogen = CRYPTOSPORIDIUM



GRAPH1

### CDC's Emerging Infections Program

CDC/USDA/FDA Foodborne Diseases Active Surveillance Network (FoodNet)  
 Rate per 100,000 per Month Postcensal Population Estimates  
 Pathogen = CRYPTOSPORIDIUM



GRAPH1





