

Monthly Vital Statistics Report



Provisional Data From the CENTERS FOR DISEASE CONTROL AND PREVENTION/National Center for Health Statistics

Births, Marriages, Divorces, and Deaths for May 1997

Births

According to provisional reports, an estimated 309,000 births occurred in the United States during May 1997. This was a 7-percent decrease from the provisional number of births reported for May 1996 (332,000). The birth rate, 13.6 live births per 1,000 population, was 8 percent lower than the rate of 14.8 for May 1996. The fertility rate, 61.0 live births per 1,000 women 15–44 years, was 7 percent lower than the comparable rate for May 1996 (65.7). The seasonally adjusted fertility rate (61.4) was also 7 percent lower than the comparable rate for May 1996 (66.2).

During the first 5 months of 1997, an estimated 1,550,000 births occurred,

2 percent lower than the 1,585,000 reported for the first 5 months of 1996. The birth rate for this period decreased by 3 percent from 14.4 in 1996 to 14.0 in 1997. The fertility rate for the first 5 months of 1997 was 62.8, 2 percent lower than the rate for the first 5 months of 1996 (64.1).

An estimated 3,865,000 live births occurred in the 12-month period ending with May 1997, a slight decline from the 3,868,000 births reported for the same period a year earlier. The birth rate of 14.5 was 1 percent lower than the rate of 14.7 for the preceding 12-month period. The fertility rate for the most recent 12-month period was 64.8, just under the rate for the 12 months ending with May 1996 (65.0).

These lower rates continued the generally downward trend observed since early 1991.

Natural increase

As a result of natural increase, the excess of births over deaths, an estimated 114,000 people, or 5.0 persons per 1,000 population, were added to the population during May 1997.

For the 12-month period ending with May 1997, 1,572,000 persons were added to the population. This represented a rate of natural increase of 5.9, the same as the rate for the preceding 12-month period. The steady rate of natural increase was due to similar decreases in the birth rate and death rate.

Provisional Vital Statistics for the United States

[Rates for infant deaths are deaths under 1 year per 1,000 live births; fertility rates are live births per 1,000 women aged 15–44 years; all other rates are per 1,000 total population. Data are subject to monthly reporting variation; see [Technical notes](#)]

Item	May				January–May				12 months ending with May				
	Number		Rate		Number		Rate		Number		Rate		
	1997	1996	1997	1996	1997	1996	1997	1996	1997	1996	1997	1996	1995
Live births	309,000	332,000	13.6	14.8	1,550,000	1,585,000	14.0	14.4	3,865,000	3,868,000	14.5	14.7	15.2
Fertility rate	61.0	65.7	62.8	64.1	64.8	65.0	66.7
Deaths	195,000	198,000	8.6	8.8	990,000	1,009,000	9.0	9.2	2,293,000	2,312,000	8.6	8.8	8.8
Infant deaths	2,200	2,400	7.0	7.3	11,100	11,900	7.1	7.5	27,300	28,600	7.1	7.4	7.8
Natural increase	114,000	134,000	5.0	6.0	560,000	576,000	5.0	5.2	1,572,000	1,556,000	5.9	5.9	6.4
Marriages	234,000	241,000	10.3	10.7	874,000	816,000	8.2	7.6	2,403,000	2,343,000	9.0	8.9	9.0
Divorces	98,000	103,000	4.3	4.6	478,000	470,000	4.3	4.3	1,158,000	1,155,000	4.3	4.4	4.5
Population base (in millions)	267.2	264.8	266.3	263.8	261.5

... Category not applicable.

NOTES: Figures include revisions received from the States. Twelve-month figures for the current year reflect revisions received for previous months, and figures for earlier years may differ from those previously published.



U.S. DEPARTMENT OF HEALTH AND HUMAN SERVICES
Centers for Disease Control and Prevention
National Center for Health Statistics



Marriages

The estimated number of marriages performed in May 1997 was 234,000, a decrease of 3 percent from the number performed in May 1996 (241,000). The marriage rate per 1,000 population for May was 4 percent lower in 1997 (10.3) than in 1996 (10.7).

The cumulative number of marriages for January–May 1997 (874,000) increased 7 percent from the number performed for the same period a year earlier (816,000). The marriage rate for this period in 1997 (8.2) was 8 percent higher than the cumulative rate for 1996 (7.6).

The number of marriages for the 12 months ending with May 1997 (2,403,000) was 3 percent higher than the number for the 12 months ending with May 1996 (2,343,000), while the marriage rate for the 1997 12-month period (9.0) was only 1 percent higher than the rate for the same period a year ago (8.9).

Divorces

The estimated number of divorces granted in May 1997 numbered 98,000, yielding a current monthly divorce rate of 4.3 divorces per 1,000 population.

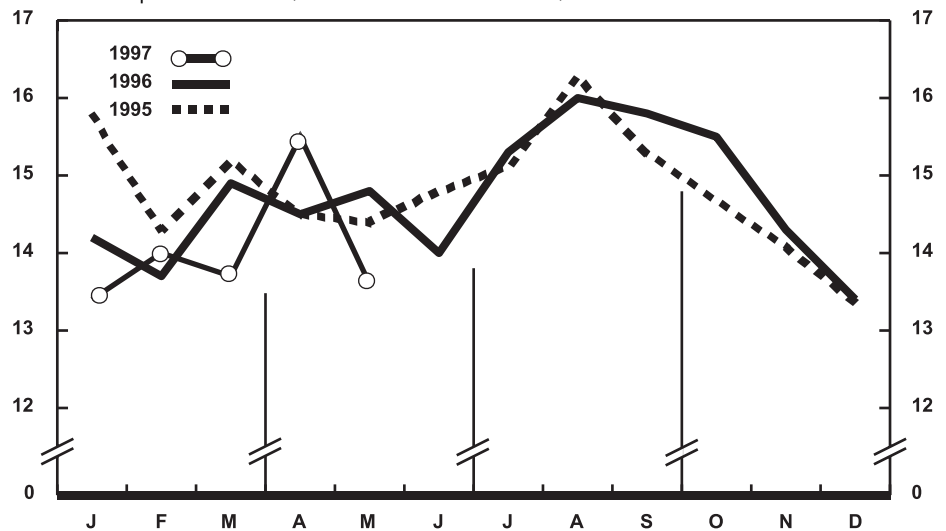
The number of divorces granted for January–May 1997 (478,000) increased 2 percent from the number granted for the same period in 1996 (470,000). The divorce rate for this period in 1997 (4.3) was the same as the rate in 1996.

The number of divorces granted during the 12 months ending with May 1997 (1,158,000) was slightly higher than the number granted in 1996 (1,155,000). However, the divorce rate decreased 2 percent, from 4.4 per 1,000 population for the 12-month period ending with May 1996 to 4.3 for the current 12-month period.

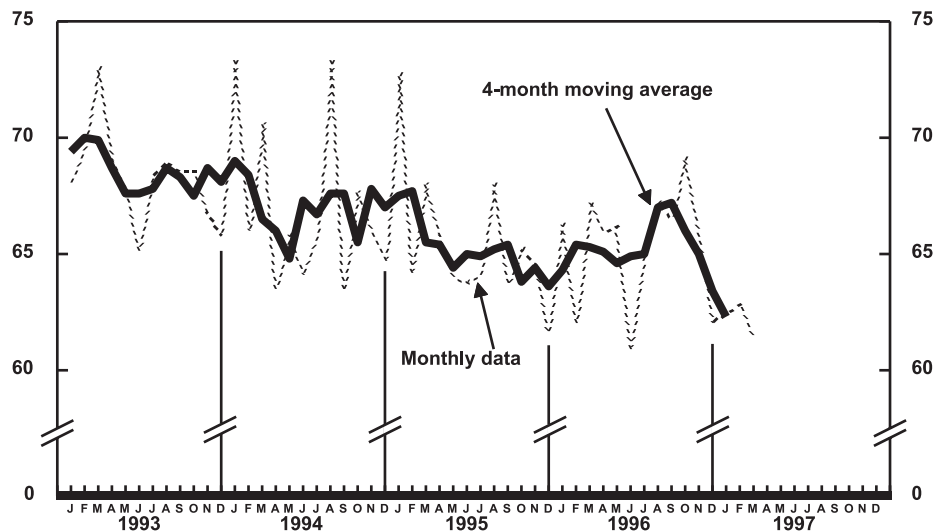
Deaths

For May 1997 there were an estimated 195,000 deaths in the United States. The death rate was 8.6 deaths per 1,000 population, 2 percent lower than the rate of 8.8 for May a year earlier. Among the 195,000 deaths for May 1997 were 2,200 deaths at ages under 1 year.

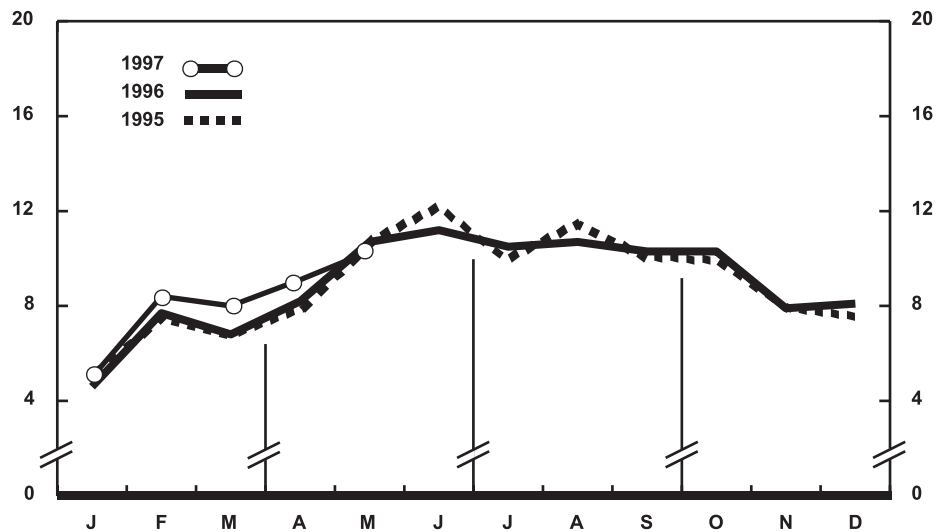
According to provisional statistics, there were 990,000 deaths during the first 5 months of 1997, 2 percent fewer than estimated for the first 5 months of 1996



Provisional birth rates per 1,000 population by month: United States, 1995-97



Provisional seasonally adjusted fertility rates per 1,000 women aged 15-44 years: United States, 1993-97



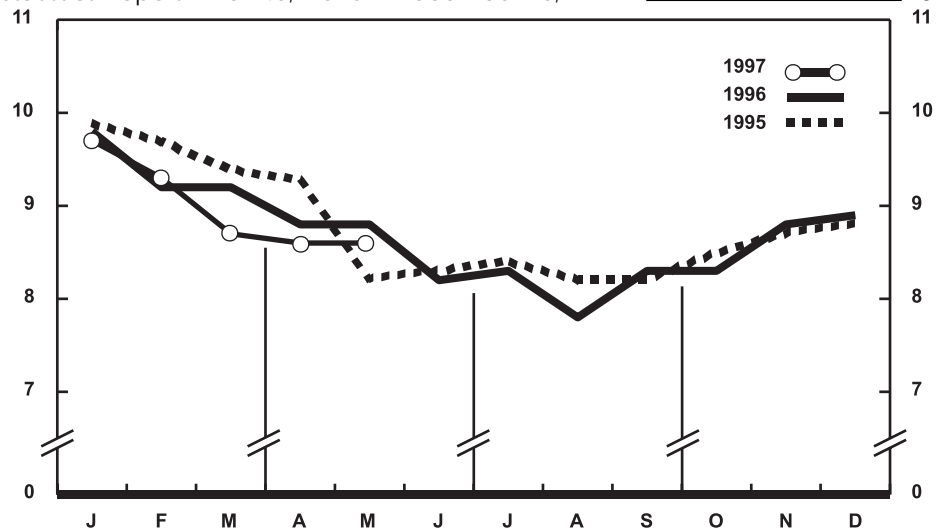
Provisional marriage rates per 1,000 population by month: United States, 1995-97

(1,009,000). The death rate, 9.0 per 1,000 population, was 2 percent lower than the rate for January–May 1996 (9.2). Among the 990,000 deaths for the first 5 months of 1997 were 11,100 deaths at ages under 1 year, yielding an infant mortality rate of 7.1 per 1,000 live births. This rate was 5 percent lower than the rate of 7.5 for the first 5 months of 1996.

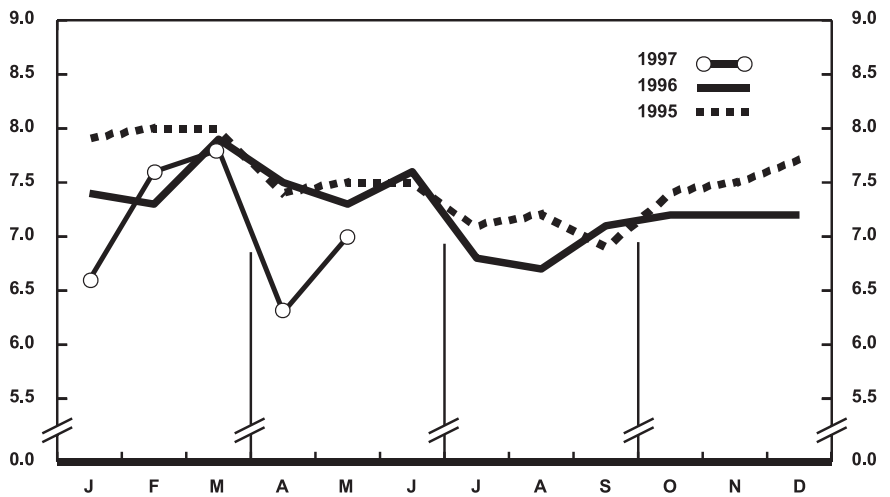
The death rate for the 12 months ending with May 1997 was 8.6 deaths per 1,000 population, 2 percent lower than the rate for the comparable 12-month period a year earlier (8.8). The infant mortality rate for this 12-month period was 7.1 per 1,000 live births, 4 percent lower than the rate of 7.4 for the 12 months ending with May 1996.

Current Mortality Sample, 12 months ending with April 1997—The provisional death rate for the 12 months ending with April 1997 was 862.8 per 100,000 population, 1 percent below the rate of 871.6 for the 12-month period ending April 1996. The provisional age-adjusted death rate for the 12-month period ending with April 1997 was 483.8 per 100,000 U.S. standard population, 2.6 percent lower than the rate of 496.6 for the 12-month period ending with April 1996. Age-adjusted death rates control for changes and variations in the age composition of the population; therefore, they are better indicators than crude rates for showing changes in mortality risk over time and for showing differences between race-sex groups within the population. Among the race-sex groups, the estimated age-adjusted death rates decreased for white males and for black males. By age the death rate for the total population decreased for all age groups except for Under one year, 5–14 years of age, 15–24 years of age, 65–74 years of age, and for 85 years of age and over.

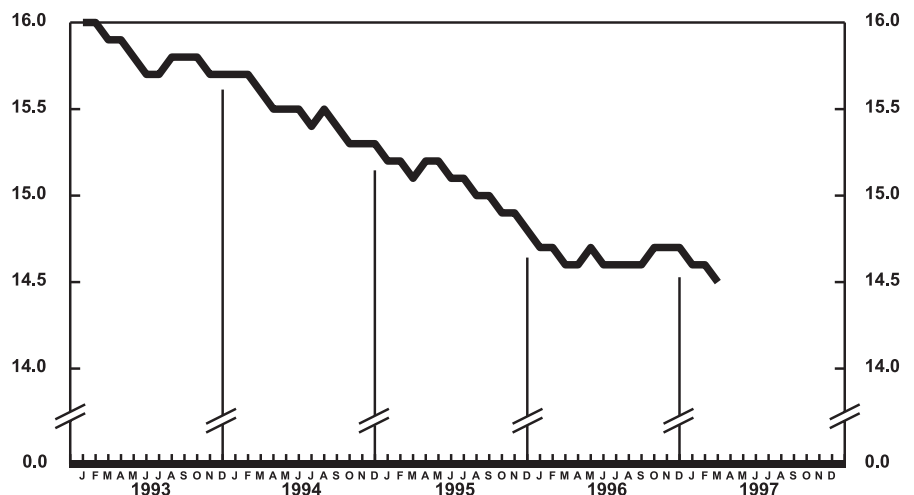
Among the major causes of death, the estimated death rate decreased between the two successive 12-month periods for Diseases of heart, Human immunodeficiency virus infection, and Homicide and legal intervention. The decrease for Homicide and legal intervention was largely due to the decline in the rate for homicide by firearms. The death rate increased between the two successive 12-month periods for Diabetes mellitis, Pneumonia and influenza, and Alzheimer’s disease. The increase for Alzheimer’s disease may



Provisional death rates per 1,000 population by month: United States, 1995–97



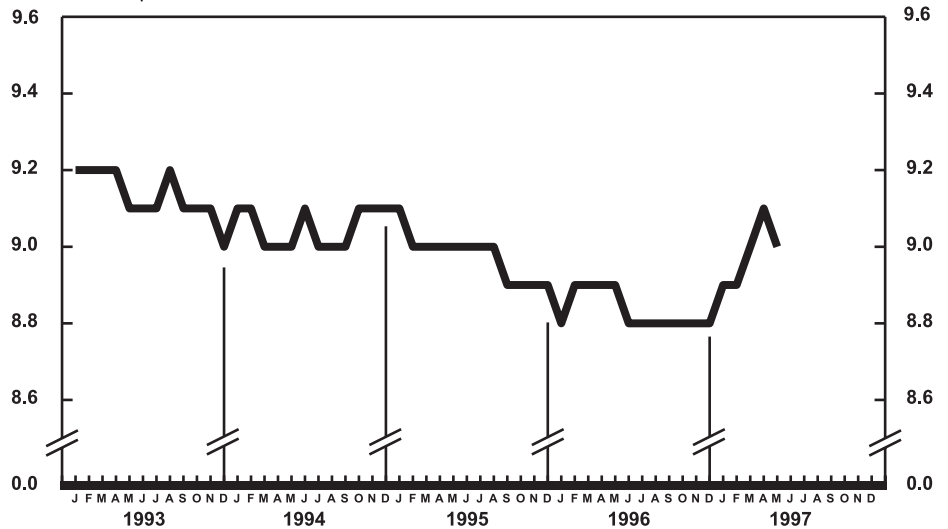
Provisional infant mortality rates per 1,000 live births by month: United States, 1995–97



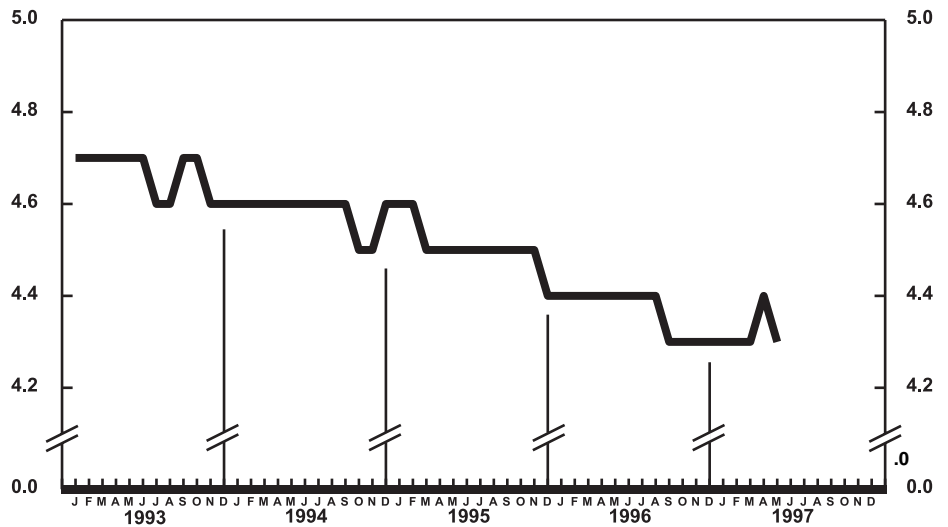
Provisional birth rates per 1,000 population for successive 12-month periods ending with month indicated: United States, 1993–97

reflect changes in diagnostic practices rather than real increases in mortality from this cause.

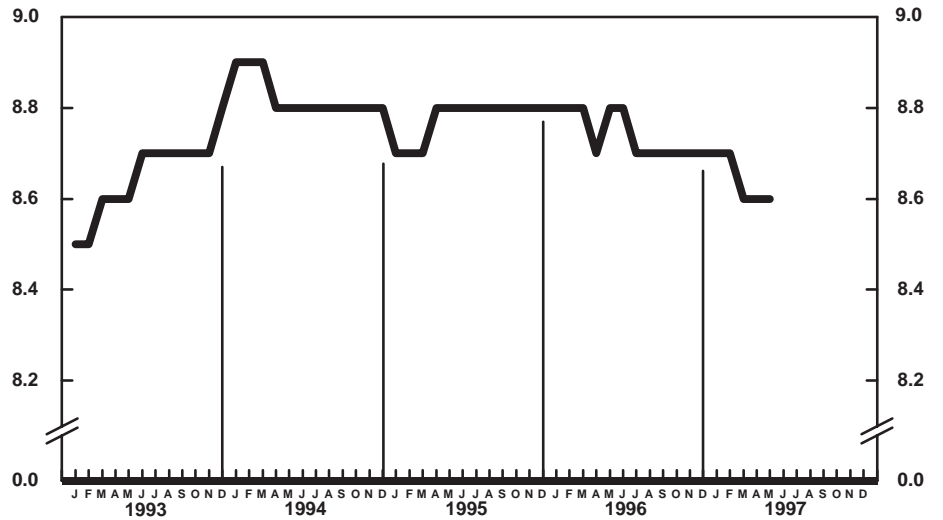
The infant mortality rate for the 12 months ending with April 1997 was 708.9 per 100,000 live births, 4.9 percent lower than the rate of 745.0 for the same 12-month period a year earlier. For infants under 28 days of age, the 12-month rate ending with April 1997 was 461.4 compared with a rate of 478.7 for the 12-month period a year earlier. The infant mortality rate for infants aged 28 days–11 months was 247.5 compared with a rate of 265.5 for the 12-month period a year earlier. The changes in the mortality rates for infants under 28 days of age and for those aged 28 days–11 months were not statistically significant.



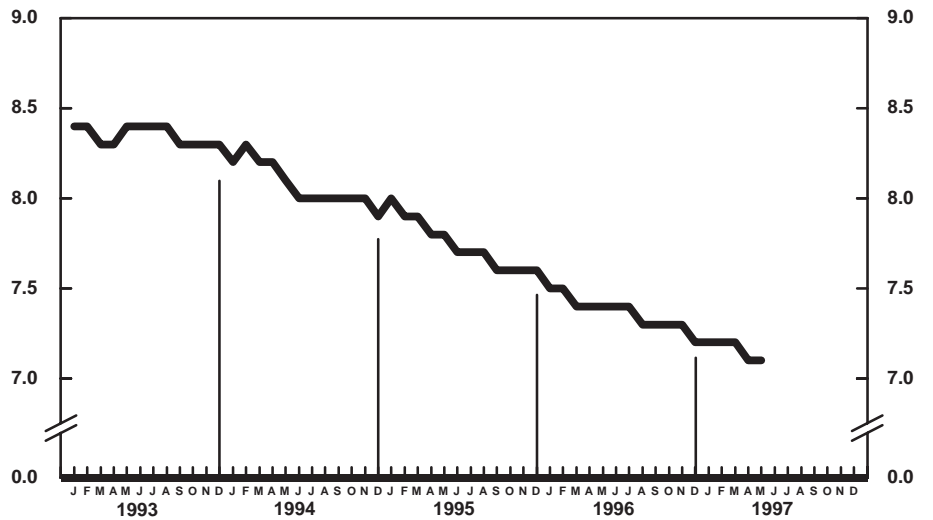
Provisional marriage rates per 1,000 population for successive 12-month periods ending with month indicated: United States, 1993–97



Provisional divorce rates per 1,000 population for successive 12-month periods ending with month indicated: United States, 1993–97



Provisional death rates per 1,000 population for successive 12-month periods ending with month indicated: United States, 1993-97



Provisional infant mortality rates per 1,000 live births for successive 12-month periods ending with month indicated: United States, 1993-97

Table 1. Provisional number of live births, marriages, divorces, deaths, and infant deaths and rates, by month: United States, January 1996–May 1997[Data are provisional and are subject to monthly reporting variation; see [Technical notes](#)]

Period	Live births				Marriages		Divorces		Deaths		Infant deaths	
	Number	Rate per 1,000 population	Rate per 1,000 women aged 15–44 years		Number	Rate per 1,000 population	Number	Rate per 1,000 population	Number	Rate per 1,000 population	Number	Rate per 1,000 live births
			Unadjusted	Seasonally adjusted ¹								
1996:												
January	318,000	14.2	63.2	66.3	100,000	4.6	94,000	4.2	220,000	9.8	2,400	7.4
February	286,000	13.7	60.7	62.0	155,000	7.7	85,000	4.1	193,000	9.2	2,200	7.3
March	334,000	14.9	66.3	67.3	147,000	6.8	93,000	4.2	206,000	9.2	2,600	7.9
April	314,000	14.5	64.3	65.9	172,000	8.2	95,000	4.4	192,000	8.8	2,300	7.5
May	332,000	14.8	65.7	66.2	241,000	10.7	103,000	4.6	198,000	8.8	2,400	7.3
June	304,000	14.0	62.2	61.0	242,000	11.2	103,000	4.8	179,000	8.2	2,300	7.6
July	343,000	15.3	67.9	65.2	235,000	10.5	96,000	4.3	187,000	8.3	2,300	6.8
August	360,000	16.0	71.3	67.3	239,000	10.7	101,000	4.5	176,000	7.8	2,200	6.7
September	345,000	15.8	70.6	66.5	225,000	10.3	92,000	4.2	182,000	8.3	2,400	7.1
October	348,000	15.5	68.9	69.2	231,000	10.3	99,000	4.4	188,000	8.3	2,500	7.2
November	313,000	14.3	63.9	66.0	171,000	7.9	94,000	4.3	191,000	8.8	2,300	7.2
December	302,000	13.4	59.8	62.1	184,000	8.1	94,000	4.2	200,000	8.9	2,300	7.2
1997:												
January	303,000	13.4	59.8	62.7	109,000	5.0	93,000	4.1	218,000	9.6	2,100	6.6
February	287,000	14.0	62.7	63.9	165,000	8.4	87,000	4.2	191,000	9.3	2,200	7.6
March	311,000	13.7	61.4	62.2	174,000	8.0	94,000	4.1	197,000	8.7	2,500	7.8
April	340,000	15.5	69.4	71.2	192,000	9.1	106,000	4.8	189,000	8.6	2,100	6.3
May	309,000	13.6	61.0	61.4	234,000	10.3	98,000	4.3	195,000	8.6	2,200	7.0

¹The method of seasonal adjustment, developed by the U.S. Bureau of the Census, is described in *The X-11 Variant of the Census Method II Seasonal Adjustment Program*, Technical Paper No. 15 (1967 revision)

NOTE: Figures include all revisions received from the States and, therefore, may differ from those previously published.

Table 2. Provisional number of live births and deaths: Each division and State, May 1996 and 1997, and cumulative figures, 1995–97

[Data are estimates by State of residence; see [Technical notes](#)]

Area	Live births					Deaths				
	May		January–May			May		January–May		
	1997	1996	1997	1996	1995	1997	1996	1997	1996	1995
New England	13,848	14,109	73,802	69,630	79,094	10,198	9,701	52,356	48,378	50,619
Maine	1,241	1,316	5,623	5,560	5,521	1,102	765	4,816	4,726	4,718
New Hampshire	1,124	1,380	5,749	5,372	5,587	842	815	4,216	3,873	4,040
Vermont	548	719	2,686	2,830	2,743	366	443	2,408	2,174	2,309
Massachusetts	6,760	6,346	38,937	35,403	38,592	4,622	4,373	24,093	22,212	24,012
Rhode Island	1,092	1,070	4,907	5,096	4,937	821	844	4,315	4,030	4,169
Connecticut	3,083	3,278	15,900	15,369	21,714	2,445	2,461	12,508	11,363	11,371
Middle Atlantic	42,416	44,842	210,094	214,179	209,302	29,535	32,131	158,834	159,604	163,582
New York	20,708	22,963	106,111	111,142	106,084	12,495	15,789	71,879	72,726	74,553
New Jersey	11,663	9,427	44,092	40,945	40,056	6,035	5,771	30,261	31,069	33,288
Pennsylvania	10,045	12,452	59,891	62,092	63,162	11,005	10,571	56,694	55,809	55,741
East North Central	49,540	50,102	243,733	253,439	250,902	32,624	31,380	166,211	169,602	168,296
Ohio	11,273	10,164	57,616	58,965	61,187	7,739	7,699	45,153	45,052	45,761
Indiana	5,916	6,348	31,291	33,018	29,887	6,044	4,445	21,689	23,153	21,711
Illinois	15,209	14,944	72,567	74,202	75,589	8,294	8,631	43,662	45,200	46,408
Michigan	11,463	12,966	54,850	59,330	56,344	6,932	6,959	35,930	36,351	35,269
Wisconsin	5,679	5,680	27,409	27,924	27,895	3,615	3,646	19,777	19,846	19,147
West North Central	22,646	19,829	105,547	103,481	102,424	13,359	13,453	75,587	72,447	73,323
Minnesota	5,839	5,549	26,780	26,300	25,902	3,043	2,966	16,284	15,766	15,809
Iowa	3,583	2,945	14,917	13,234	12,517	2,092	2,350	12,158	11,363	11,050
Missouri	5,541	5,633	30,810	30,437	30,608	4,092	3,970	23,806	23,111	24,193
North Dakota	768	643	3,489	3,368	3,661	483	509	2,682	2,500	2,625
South Dakota	879	877	4,230	3,918	4,667	487	614	3,111	2,578	3,002
Nebraska	3,058	1,619	10,269	9,451	9,582	1,334	1,045	6,776	6,410	6,501
Kansas	2,978	2,563	15,052	16,773	15,487	1,828	1,999	10,770	10,719	10,143
South Atlantic	54,040	51,096	269,297	264,056	273,549	36,506	37,045	192,544	196,760	192,739
Delaware	809	809	4,071	4,261	4,110	503	556	2,791	2,791	2,673
Maryland	5,959	5,612	26,355	28,926	30,067	3,300	3,670	16,590	18,076	17,313
District of Columbia	720	689	3,368	3,387	3,745	501	508	2,579	2,665	2,809
Virginia	7,395	7,384	34,994	34,055	40,885	4,437	4,332	22,949	22,502	23,367
West Virginia	1,652	1,076	9,038	7,793	8,932	1,678	1,805	9,511	8,104	8,753
North Carolina	8,535	6,572	44,165	42,593	42,568	5,591	5,594	29,080	29,461	28,221
South Carolina	3,803	4,505	21,252	21,174	20,770	3,204	3,090	13,894	15,300	14,204
Georgia	9,191	9,977	48,476	47,797	48,272	4,861	5,076	26,296	27,148	25,879
Florida	15,976	14,472	77,578	74,070	74,200	12,431	12,414	68,854	70,713	69,520
East South Central	19,333	20,283	89,762	90,786	92,162	14,333	13,816	70,831	69,528	69,872
Kentucky	4,347	4,247	21,413	21,647	20,343	3,179	3,019	17,219	16,754	17,572
Tennessee	7,032	8,136	28,923	28,082	29,917	5,124	5,228	23,108	21,620	22,227
Alabama	5,003	4,460	24,340	24,790	25,318	3,696	3,341	18,756	19,323	18,587
Mississippi	2,951	3,440	15,086	16,267	16,584	2,334	2,228	11,748	11,831	11,486
West South Central	40,152	41,682	182,259	183,033	204,770	20,058	20,562	97,660	104,778	103,861
Arkansas	2,805	2,561	13,945	13,984	13,528	2,250	1,944	10,650	11,027	10,760
Louisiana	5,840	6,017	26,129	27,842	28,625	3,330	2,780	16,399	18,709	17,087
Oklahoma	4,353	4,727	18,960	19,079	19,353	2,458	2,696	14,792	14,700	14,186
Texas ¹	27,154	28,377	123,225	122,128	143,264	12,020	13,142	55,819	60,342	61,828
Mountain	24,209	24,094	114,678	105,010	102,610	9,873	10,962	50,742	52,507	49,266
Montana	1,005	947	4,295	4,492	4,535	645	634	3,244	3,254	3,261
Idaho	1,603	1,605	7,062	7,852	6,970	663	712	3,846	3,587	3,517
Wyoming	425	436	2,552	2,469	2,689	319	287	1,586	1,434	1,603
Colorado	4,802	4,438	23,470	20,362	21,868	2,059	1,959	11,101	11,045	10,719
New Mexico	2,286	2,086	10,805	10,928	10,962	1,057	1,230	6,046	5,762	5,325
Arizona	9,340	9,397	39,401	34,678	31,916	3,333	4,102	14,497	16,823	14,791
Utah	2,786	3,350	17,422	16,131	15,884	690	986	4,806	4,830	4,627
Nevada	1,962	1,835	9,671	8,098	7,786	1,107	1,052	5,616	5,772	5,423
Pacific	46,579	69,257	257,446	294,926	293,880	28,084	29,157	125,237	134,662	132,085
Washington	6,160	7,176	30,957	34,053	30,831	3,657	2,828	19,083	16,935	16,153
Oregon	3,820	3,905	18,976	19,350	18,503	2,489	2,230	13,204	12,437	12,155
California ¹	34,060	55,764	196,524	229,692	232,710	21,105	23,227	88,696	100,952	99,657
Alaska	888	847	3,973	4,203	4,518	193	209	881	938	857
Hawaii	1,651	1,565	7,016	7,628	7,318	640	663	3,373	3,400	3,263
Puerto Rico ²	4,807	4,174	27,019	23,931	24,794	2,612	2,611	12,220	11,404	12,216

¹Figures include adjustments for varying lengths of reporting periods; see [Technical notes](#).

²Data for Puerto Rico are not included in U.S. total figures.

NOTES: Figures include all revisions received from the States. Cumulative figures for the current year reflect revisions received for previous months, and figures for earlier years may differ from those previously published.

Table 3. Provisional number of marriages and divorces: Each division and State, May 1996 and 1997, and cumulative figures, 1995–97[By State of occurrence. Number of events reported; see [Technical notes](#). Divorces include reported annulments]

Area	Marriages					Divorces				
	May		January–May			May		January–May		
	1997	1996	1997	1996	1995	1997	1996	1997	1996	1995
New England	1,134	9,353	126,371	24,929	25,288	5,887	12,377	16,888	10,461	16,164
Maine	---	411	---	1,914	2,594	428	225	1,387	1,636	1,944
New Hampshire	500	573	2,595	2,269	2,166	602	456	2,519	1,964	2,019
Vermont	312	325	1,437	1,373	1,444	377	372	1,311	1,207	1,350
Massachusetts	4,074	5,387	12,666	11,537	11,802	3,292	---	6,222	---	5,383
Rhode Island	833	735	2,614	2,159	1,913	251	358	1,258	1,375	1,473
Connecticut	2,415	1,922	7,059	5,677	5,369	937	966	4,191	4,279	3,995
Middle Atlantic	31,015	26,668	112,982	82,740	84,540	9,666	11,948	52,465	49,535	49,540
Ohio	14,289	12,665	71,507	46,338	46,265	4,796	6,634	26,604	23,982	23,019
New Jersey	9,454	5,534	21,355	15,685	15,891	2,171	2,459	11,123	10,715	10,219
Pennsylvania	7,272	8,469	20,120	20,717	22,384	2,699	2,855	14,738	14,838	16,302
East North Central	26,056	29,602	99,901	97,128	105,233	12,397	14,440	56,612	57,996	61,466
Ohio	7,442	7,354	26,530	24,128	29,440	4,434	5,160	18,056	18,285	19,956
Indiana	2,670	4,286	12,291	15,188	16,265	---	---	---	---	---
Illinois	8,018	8,273	32,841	27,789	28,779	3,041	4,036	15,558	15,776	16,833
Michigan	4,846	6,381	18,209	19,970	20,676	3,556	3,899	15,838	16,972	17,394
Wisconsin	3,080	3,308	10,030	10,053	10,073	1,366	1,345	7,160	6,963	7,285
West North Central	11,357	12,740	44,751	46,401	46,468	5,315	6,471	28,386	31,180	30,911
Minnesota	3,002	2,527	9,214	9,233	9,178	1,281	1,335	5,902	6,150	6,334
Iowa	1,475	2,425	6,311	6,710	6,554	771	838	4,130	4,137	4,619
Missouri	3,602	3,779	14,950	16,088	16,121	2,095	2,212	10,142	10,851	11,784
North Dakota	204	403	1,040	1,335	1,190	140	229	791	980	919
South Dakota	545	633	2,000	1,996	2,202	242	233	1,120	1,113	1,181
Nebraska	1,359	1,388	4,357	4,305	4,282	664	489	2,686	2,523	2,683
Kansas	1,170	1,585	6,879	6,734	6,941	122	1,135	3,615	5,426	3,391
South Atlantic	40,445	43,642	182,038	167,784	167,379	19,697	19,150	97,626	86,245	92,937
Delaware	568	560	1,890	1,753	1,740	267	319	1,283	1,415	1,601
Maryland	4,345	4,588	14,084	13,502	13,237	1,065	1,049	5,733	5,635	6,063
District of Columbia	63	232	491	650	576	55	121	390	444	536
Virginia	6,959	6,194	24,616	21,847	24,957	2,573	2,690	13,705	11,164	10,993
West Virginia	1,015	827	2,914	3,281	3,403	945	1,089	3,952	2,794	3,821
North Carolina	6,788	5,327	24,717	21,070	23,129	3,351	3,391	15,779	13,885	15,180
South Carolina	4,645	4,635	17,030	17,404	17,180	1,259	1,052	6,275	6,033	5,807
Georgia	4,526	5,743	23,287	23,465	23,247	3,150	3,185	15,618	14,357	14,956
Florida	11,536	15,536	73,009	64,812	59,910	7,032	6,254	34,891	30,518	33,980
East South Central	14,159	15,753	70,360	67,401	71,823	6,847	7,987	33,827	40,283	40,188
Kentucky	3,535	4,370	16,712	14,882	17,189	1,606	1,881	8,961	9,082	9,581
Tennessee	5,122	5,452	27,762	26,810	32,584	2,221	3,030	10,278	14,860	14,168
Alabama	3,509	3,851	16,958	17,641	14,376	2,031	2,018	8,713	10,761	10,818
Mississippi	1,993	2,080	8,928	8,068	7,674	1,002	1,045	5,875	5,580	5,621
West South Central	29,368	28,702	107,207	106,689	119,494	12,824	12,238	12,618	56,187	57,211
Arkansas	4,001	3,523	11,750	12,270	13,230	1,200	1,433	5,100	5,158	5,651
Louisiana	3,825	3,774	6,629	13,956	13,887	---	---	---	---	---
Oklahoma	2,726	3,047	10,836	10,790	10,672	1,624	1,849	7,518	8,577	9,018
Texas ³	18,816	18,358	77,992	69,673	81,705	---	8,956	---	42,452	42,542
Mountain	24,194	25,880	110,018	109,345	104,218	15,098	15,249	125,189	125,362	124,462
Montana	509	533	1,715	1,862	1,792	380	392	1,607	1,786	1,586
Idaho	1,130	1,064	5,093	4,820	5,113	604	679	3,205	3,057	2,756
Wyoming	399	364	1,531	1,426	1,485	211	325	1,211	1,372	1,377
Colorado	3,021	3,013	11,451	11,186	11,207	---	---	---	---	---
New Mexico ^{4,5}	1,470	1,653	6,516	6,604	5,651	783	969	4,243	4,906	4,500
Arizona ²	3,788	4,329	18,069	17,317	16,155	2,414	2,183	11,269	10,622	10,406
Utah	1,235	1,720	6,898	7,679	7,596	706	701	3,654	3,619	3,837
Nevada	12,642	13,204	58,745	58,451	55,219	---	---	---	---	---
Pacific	27,700	27,062	122,201	118,351	94,597	14,346	14,066	19,880	120,773	121,670
Washington	3,540	3,784	14,313	14,450	13,804	2,741	2,332	11,224	11,402	12,188
Oregon	1,660	2,096	8,111	7,725	8,517	937	1,136	5,669	6,270	6,228
California	20,050	18,883	89,907	86,783	63,243	---	---	---	---	---
Alaska	505	396	1,710	1,682	1,724	224	188	1,112	1,123	1,201
Hawaii	1,945	1,903	8,023	7,848	7,309	444	410	1,875	1,978	2,053
Puerto Rico ⁶	2,285	2,324	11,690	11,628	12,031	---	---	---	---	---

--- Data not available.

¹Excludes figures for State(s) shown below as not available.²Figures for marriages are marriage licenses issued for some counties.³Figures include adjustments for varying lengths of reporting periods; see [Technical notes](#).⁴Figures for marriages are marriage licenses issued.⁵Figures for divorces include estimates for some counties.⁶Data for Puerto Rico are not included in U.S. total figures.

NOTES: Figures include all revisions received from the States. Cumulative figures for the current year reflect revisions received for previous months, and figures for earlier years may differ from those previously published.

Table 4. Provisional number of deaths under 1 year and infant mortality rates: Each division and State, 12 months ending with May 1996 and 1997

[Data are estimates by State of residence. Figures should be interpreted with caution because of conversion of place of occurrence to place of residence; see [Technical notes](#). Infant mortality rates are deaths under 1 year per 1,000 live births in specified area]

Area	12 months ending with May			
	1997		1996	
	Number	Rate	Number	Rate
New England	962	5.5	885	5.2
Maine	48	3.5	83	5.9
New Hampshire	76	5.2	61	4.1
Vermont	49	7.4	51	7.4
Massachusetts	409	4.9	372	4.5
Rhode Island	76	6.1	82	6.4
Connecticut	304	6.8	236	6.1
Middle Atlantic	3,577	6.7	3,867	7.2
New York	1,712	6.4	1,927	7.2
New Jersey	812	6.9	791	6.8
Pennsylvania	1,053	7.1	1,149	7.6
East North Central	4,691	7.6	5,194	8.3
Ohio	1,121	7.4	1,255	8.2
Indiana	589	7.2	683	7.8
Illinois	1,430	7.8	1,647	8.9
Michigan	1,079	8.1	1,101	8.1
Wisconsin	472	7.1	508	7.6
West North Central	1,845	7.2	1,758	6.9
Minnesota	417	6.5	383	6.1
Iowa	206	5.6	214	5.8
Missouri	609	8.3	565	7.6
North Dakota	53	6.2	41	4.9
South Dakota	62	6.0	68	6.9
Nebraska	203	8.4	175	7.6
Kansas	295	7.7	312	8.1
South Atlantic	5,261	7.9	5,615	8.7
Delaware	75	7.5	74	7.3
Maryland	586	8.6	595	8.4
District of Columbia	107	13.0	153	17.8
Virginia	618	6.9	686	8.3
West Virginia	141	6.8	159	8.0
North Carolina	1,016	9.4	956	9.4
South Carolina	406	8.0	445	8.9
Georgia	958	8.3	1,096	9.7
Florida	1,354	7.0	1,451	7.7
East South Central	2,101	9.2	2,054	9.3
Kentucky	435	8.3	394	7.5
Tennessee	655	8.8	643	8.9
Alabama	579	9.5	620	10.2
Mississippi	432	10.7	397	10.8
West South Central	3,128	6.8	3,351	7.4
Arkansas	300	8.4	284	8.2
Louisiana	585	9.1	592	8.9
Oklahoma	394	8.7	419	9.2
Texas ¹	1,849	5.9	2,056	6.7
Mountain	1,884	7.1	1,697	7.0
Montana	78	7.4	81	7.2
Idaho	131	7.2	120	6.4
Wyoming	34	5.4	51	8.4
Colorado	383	7.6	348	7.2
New Mexico	186	6.9	177	6.5
Arizona	706	8.4	563	7.9
Utah	233	5.5	218	5.6
Nevada	133	5.3	139	6.4
Pacific	3,923	6.0	4,179	5.8
Washington	434	5.7	348	4.3
Oregon	260	6.0	242	5.5
California ¹	3,072	6.0	3,406	6.1
Alaska	65	6.5	71	7.3
Hawaii	92	5.2	112	6.0
Puerto Rico ²	549	8.5	654	10.8

¹Figures include adjustments for varying lengths of reporting periods; see [Technical notes](#).

²Data for Puerto Rico are not included in U.S. total figures.

NOTES: Figures include all revisions received from the States. Figures for the current year reflect revisions received for previous months, and figures for earlier years may differ from those previously published.

Table 5. Provisional number of deaths and death rates, by age, race, and sex, and age-adjusted death rates by race and sex: United States, April 1996 and 1997, cumulative figures 1996 and 1997, and 12 months ending with April 1996 and 1997

[Data are provisional, estimated from a 10-percent sample of deaths. Age-specific rates on an annual basis per 100,000 population in specified group; age-adjusted rates per 100,000 U.S. standard population; see [Technical notes](#). Because of rounding of estimates, figures may not add to totals. For method of computation and information on standard errors of the estimates, see [Technical notes](#)]

Age, race, and sex	April				January–April				12 months ending with April			
	1997		1996		1997		1996		1997		1996	
	Number	Rate	Number	Rate	Number	Rate	Number	Rate	Number	Rate	Number	Rate
All races, both sexes¹												
All ages	189,000	861.3	192,000	883.3	795,000	907.1	810,000	927.6	2,296,000	862.8	2,298,000	871.6
Under 1 year					8,800	² 717.8	9,400	² 739.2	27,500	² 732.3	28,600	² 743.6
1–4 years	} 3,430	72.2	3,640	76.6	1,860	36.8	2,160	41.8	5,550	36.0	6,340	40.5
5–14 years					2,670	21.0	2,810	22.2	8,650	22.4	8,360	21.8
15–24 years					2,420	80.8	2,590	88.0	10,290	86.0	10,600	89.4
25–34 years	3,690	112.7	3,830	115.3	15,200	115.8	17,970	134.0	49,460	123.2	56,450	138.8
35–44 years	7,110	197.1	7,420	210.0	29,590	205.4	33,090	232.7	92,920	212.9	100,950	235.9
45–54 years	11,620	423.9	11,540	439.4	48,120	441.4	47,930	454.1	142,990	435.3	142,070	449.6
55–64 years	18,760	1,052.5	19,670	1,128.3	78,110	1,098.1	80,980	1,152.9	231,560	1,078.3	233,710	1,102.7
65–74 years	37,910	2,488.5	39,260	2,560.4	156,930	2,572.4	166,350	2,687.2	467,700	2,512.9	473,260	2,522.8
75–84 years	54,470	5,690.5	54,900	5,903.2	231,400	6,060.0	233,730	6,248.0	656,400	5,688.5	651,620	5,794.8
85 years and over	49,470	15,698.6	48,590	16,012.9	212,020	16,861.1	205,020	16,791.5	579,090	15,227.2	559,520	15,245.8
Not stated	130	...	100	...	420	...	360	...	1,010	...	1,000	...
Age-adjusted rate ³	474.8	...	494.9	...	496.3	...	519.0	...	483.8	...	496.6
All races, male¹												
All ages	93,970	874.7	96,360	909.7	393,830	917.5	408,260	956.7	1,150,750	883.5	1,166,980	906.3
Under 1 year					4,980	² 794.0	5,100	² 780.2	15,380	² 801.9	15,790	² 801.1
1–4 years	} 1,820	74.8	1,870	76.9	990	38.6	1,140	43.1	3,100	39.2	3,480	43.4
5–14 years					1,460	22.4	1,650	25.4	4,960	25.1	4,990	25.5
15–24 years					1,680	109.1	1,960	130.5	7,310	119.0	8,050	133.0
25–34 years	2,740	167.4	2,750	165.7	10,740	163.4	12,860	191.8	34,910	173.9	40,700	200.3
35–44 years	4,670	260.3	5,330	304.0	19,970	279.0	22,700	321.7	62,590	288.4	69,370	326.9
45–54 years	7,330	546.5	7,300	569.0	29,940	561.4	30,600	593.4	89,630	557.6	90,600	586.9
55–64 years	10,940	1,288.6	11,910	1,436.1	46,850	1,382.4	48,620	1,455.1	139,500	1,364.6	140,480	1,393.8
65–74 years	21,800	3,203.7	21,980	3,218.4	89,550	3,287.2	94,270	3,419.3	264,080	3,179.4	270,460	3,239.4
75–84 years	26,380	6,980.3	27,160	7,462.9	111,750	7,420.7	115,560	7,902.0	319,510	7,034.6	320,880	7,317.7
85 years and over	16,530	18,283.2	16,040	18,780.0	69,980	19,416.2	67,440	19,647.7	191,840	17,664.8	183,320	17,798.1
Not stated	80	...	70	...	300	...	260	...	660	...	710	...
Age-adjusted rate ³	595.8	...	630.4	...	624.0	...	662.6	...	611.3	...	637.2
All races, female¹												
All ages	95,050	848.5	95,170	857.9	401,600	897.2	402,190	899.9	1,145,390	843.0	1,129,160	837.2
Under 1 year					3,830	² 636.3	4,330	² 697.8	12,090	² 659.6	12,810	² 681.7
1–4 years	} 1,620	69.9	1,770	76.3	860	34.8	1,030	40.4	2,450	32.5	2,860	37.4
5–14 years					1,210	19.5	1,170	18.7	3,690	19.6	3,360	18.0
15–24 years					740	50.8	630	43.7	2,970	51.1	2,550	43.9
25–34 years	950	58.1	1,080	65.0	4,460	68.0	5,110	76.2	14,550	72.5	15,750	77.4
35–44 years	2,440	134.6	2,090	117.4	9,620	132.8	10,390	145.0	30,330	138.2	31,580	146.5
45–54 years	4,290	306.5	4,240	315.6	18,180	326.4	17,330	320.8	53,370	318.1	51,470	318.5
55–64 years	7,820	837.8	7,760	849.1	31,260	838.9	32,370	879.0	92,060	818.2	93,230	838.8
65–74 years	16,110	1,911.3	17,280	2,032.2	67,380	1,995.6	72,080	2,099.1	203,620	1,975.7	202,800	1,948.3
75–84 years	28,090	4,849.0	27,740	4,901.2	119,650	5,175.0	118,180	5,186.8	336,900	4,814.9	330,730	4,820.4
85 years and over	32,940	14,658.7	32,550	14,923.3	142,050	15,836.1	137,580	15,675.5	387,250	14,263.4	376,190	14,249.6
Not stated	50	...	30	...	130	...	100	...	350	...	290	...
Age-adjusted rate ³	374.7	...	382.8	...	390.0	...	400.2	...	377.2	...	379.3
White												
All ages	163,700	901.8	165,690	922.0	690,010	951.1	699,620	966.0	1,977,830	897.8	1,974,730	903.0
Under 1 year					5,820	² 597.6	6,160	² 620.3	17,760	² 595.8	19,030	² 632.2
1–4 years	} 2,440	64.9	2,500	66.5	1,430	35.4	1,500	36.8	3,870	31.7	4,420	35.7
5–14 years					2,040	20.4	2,030	20.1	6,350	20.8	6,170	20.3
15–24 years					1,690	70.9	1,720	73.4	7,320	76.9	7,350	77.6
25–34 years	2,650	99.9	2,510	92.8	11,000	103.3	12,490	114.2	35,090	107.7	39,180	118.1
35–44 years	5,150	172.0	5,430	184.6	21,570	180.3	23,770	200.8	67,620	186.5	72,290	202.9
45–54 years	8,880	380.6	8,820	393.4	37,440	403.5	36,450	404.5	109,680	391.9	108,910	403.3
55–64 years	14,890	970.3	16,070	1,068.0	62,730	1,023.8	65,930	1,087.3	187,170	1,011.4	189,890	1,037.3
65–74 years	32,930	2,449.8	34,500	2,540.6	135,930	2,523.9	144,940	2,643.0	404,150	2,457.7	410,360	2,467.6
75–84 years	49,340	5,696.0	49,250	5,840.9	209,110	6,051.0	209,900	6,188.1	590,020	5,648.8	585,200	5,738.9
85 years and over	45,640	16,002.5	44,830	16,234.1	195,350	17,163.0	188,860	16,998.9	531,800	15,445.8	514,190	15,390.3
Not stated	80	...	80	...	270	...	240	...	710	...	750	...
Age-adjusted rate ³	453.1	...	471.1	...	474.9	...	493.0	...	459.9	...	470.5

See footnotes at end of table.

Table 5. Provisional number of deaths and death rates, by age, race, and sex, and age-adjusted death rates by race and sex: United States, April 1996 and 1997, cumulative figures 1996 and 1997, and 12 months ending with April 1996 and 1997—Con.

[Data are provisional, estimated from a 10-percent sample of deaths. Age-specific rates on an annual basis per 100,000 population in specified group; age-adjusted rates per 100,000 U.S. standard population; see [Technical notes](#). Because of rounding of estimates, figures may not add to totals. For method of computation and information on standard errors of the estimates, see [Technical notes](#)]

Age, race, and sex	April				January–April				12 months ending with April			
	1997		1996		1997		1996		1997		1996	
	Number	Rate	Number	Rate	Number	Rate	Number	Rate	Number	Rate	Number	Rate
White male												
All ages	80,790	904.6	82,480	935.2	338,160	947.5	348,030	979.2	982,070	906.4	992,670	925.1
Under 1 year	} 1,240	64.3	1,230	63.8	3,290	² 659.1	3,240	² 634.6	10,060	² 658.4	10,550	² 682.8
1–4 years					750	36.0	800	38.8	2,240	35.7	2,530	39.9
5–14 years					1,130	21.7	1,170	22.4	3,650	23.3	3,640	23.4
15–24 years					1,180	95.7	1,280	106.4	5,120	103.8	5,450	112.1
25–34 years	2,040	152.2	1,900	139.1	7,850	146.0	9,180	166.5	25,070	152.2	28,890	172.5
35–44 years	3,530	234.5	3,970	269.1	14,720	244.8	16,470	277.4	46,170	253.3	50,380	282.0
45–54 years	5,650	489.4	5,600	505.8	23,400	509.6	23,390	525.2	69,280	500.4	70,040	525.2
55–64 years	8,750	1,183.5	9,700	1,340.0	38,290	1,296.7	39,610	1,358.4	114,030	1,279.7	115,050	1,306.9
65–74 years	19,060	3,149.0	19,500	3,200.2	77,980	3,216.5	82,520	3,353.5	229,750	3,106.4	235,620	3,160.1
75–84 years	24,080	7,014.0	24,500	7,396.7	101,460	7,414.8	104,020	7,815.3	289,100	7,006.8	289,860	7,264.7
85 years and over	15,180	18,731.2	14,750	19,103.0	63,940	19,790.2	61,990	19,970.4	175,070	17,974.3	167,320	17,972.1
Not stated	70	...	60	...	230	...	200	...	510	...	570	...
Age-adjusted rate ³	568.5	...	597.5	...	595.8	...	625.9	...	580.3	...	602.1
White female												
All ages	82,900	899.0	83,210	909.3	351,850	954.5	351,590	953.3	995,760	889.5	982,060	881.8
Under 1 year	} 1,200	65.5	1,270	69.4	2,530	² 533.0	2,920	² 605.2	7,700	² 529.9	8,480	² 578.8
1–4 years					670	34.3	690	35.3	1,630	27.4	1,890	31.4
5–14 years					910	18.6	860	17.7	2,690	18.1	2,530	17.1
15–24 years					510	44.3	450	39.4	2,210	48.3	1,900	41.3
25–34 years	610	46.5	610	45.5	3,150	60.0	3,300	61.0	10,020	62.2	10,290	62.7
35–44 years	1,630	109.5	1,450	98.9	6,850	115.1	7,300	123.7	21,460	119.0	21,910	123.3
45–54 years	3,220	273.2	3,220	283.8	14,040	299.5	13,070	286.3	40,390	285.6	38,880	284.4
55–64 years	6,140	772.1	6,370	815.8	24,440	769.8	26,310	836.1	73,140	762.3	74,840	787.5
65–74 years	13,870	1,877.1	15,000	2,003.7	57,950	1,956.9	62,430	2,064.6	174,400	1,927.5	174,740	1,904.7
75–84 years	25,250	4,828.8	24,750	4,834.3	107,650	5,156.5	105,880	5,137.4	300,920	4,762.1	295,330	4,758.0
85 years and over	30,460	14,919.3	30,080	15,120.6	131,400	16,121.5	126,880	15,846.9	356,730	14,448.4	346,870	14,392.9
Not stated	10	...	20	...	40	...	50	...	210	...	180	...
Age-adjusted rate ³	356.9	...	366.4	...	373.8	...	382.8	...	358.7	...	360.3
Black												
All ages	22,310	802.5	22,820	831.1	91,860	827.1	98,100	887.3	278,010	825.8	284,010	852.6
Under 1 year	} 880	119.5	1,020	137.3	2,770	² 1,495.9	2,950	² 1,417.5	8,830	² 1,585.3	8,680	² 1,391.0
1–4 years					420	53.2	570	70.0	1,480	62.4	1,630	66.0
5–14 years					550	27.1	680	34.5	1,840	30.5	1,800	30.4
15–24 years					650	142.7	730	162.9	2,500	138.0	2,830	157.1
25–34 years	940	212.4	1,220	274.8	3,680	207.6	4,950	276.1	12,660	234.2	15,650	289.4
35–44 years	1,800	404.7	1,820	420.5	7,310	411.8	8,590	492.9	22,840	425.8	26,230	501.5
45–54 years	2,430	835.2	2,440	882.5	9,400	812.4	10,220	921.1	29,190	840.5	29,670	897.2
55–64 years	3,400	1,882.0	3,180	1,807.0	13,700	1,906.7	13,380	1,888.0	39,440	1,818.3	38,620	1,806.4
65–74 years	4,270	3,162.0	4,220	3,162.4	18,030	3,344.4	18,820	3,500.1	55,280	3,374.8	55,320	3,408.5
75–84 years	4,520	6,402.0	5,000	7,270.6	19,010	6,742.2	20,760	7,495.7	57,190	6,704.6	57,890	6,941.2
85 years and over	3,390	14,222.4	3,170	13,861.6	14,350	15,051.0	14,240	15,419.5	40,680	14,027.6	39,770	14,254.5
Not stated	40	...	20	...	140	...	120	...	280	...	230	...
Age-adjusted rate ³	698.9	...	730.4	...	716.2	...	776.1	...	721.5	...	751.2
Black male												
All ages	11,550	875.0	12,170	934.1	48,140	913.1	53,160	1,013.5	146,260	915.2	153,270	969.8
Under 1 year	} 500	133.8	580	153.9	1,560	² 1,652.8	1,650	² 1,570.9	4,790	² 1,698.6	4,700	² 1,487.3
1–4 years					240	61.4	280	70.3	790	65.7	820	65.5
5–14 years					310	30.7	390	40.0	1,080	35.3	1,120	37.2
15–24 years					450	196.9	590	263.1	1,890	208.3	2,350	259.7
25–34 years	620	295.3	810	385.4	2,520	299.8	3,340	394.3	8,650	337.6	10,760	420.3
35–44 years	1,060	509.1	1,210	598.6	4,770	575.4	5,680	699.0	14,830	591.1	17,340	710.4
45–54 years	1,500	1,137.8	1,520	1,213.6	5,790	1,102.3	6,510	1,294.7	18,090	1,149.3	18,590	1,240.2
55–64 years	1,900	2,423.1	1,940	2,536.8	7,630	2,445.0	7,990	2,595.0	22,580	2,399.6	22,450	2,414.0
65–74 years	2,300	4,073.3	2,160	3,875.3	9,880	4,385.3	10,280	4,583.4	29,740	4,341.6	30,280	4,472.7
75–84 years	2,010	7,738.9	2,340	9,268.8	8,520	8,214.7	9,970	9,834.1	25,540	8,133.8	26,790	8,783.6
85 years and over	1,200	17,176.5	1,010	15,402.5	4,980	17,784.8	4,630	17,387.4	13,610	16,011.8	13,370	16,506.2
Not stated	10	...	10	...	60	...	70	...	150	...	130	...
Age-adjusted rate ³	894.9	...	966.3	...	931.0	...	1,045.0	...	938.8	...	1,000.5

See footnotes at end of table.

Table 5. Provisional number of deaths and death rates, by age, race, and sex, and age-adjusted death rates by race and sex: United States, April 1996 and 1997, cumulative figures 1996 and 1997, and 12 months ending with April 1996 and 1997—Con.

[Data are provisional, estimated from a 10-percent sample of deaths. Age-specific rates on an annual basis per 100,000 population in specified group; age-adjusted rates per 100,000 U.S. standard population; see [Technical notes](#). Because of rounding of estimates, figures may not add to totals. For method of computation and information on standard errors of the estimates, see [Technical notes](#)]

Age, race, and sex	April				January–April				12 months ending with April							
	1997		1996		1997		1996		1997		1996					
	Number	Rate	Number	Rate	Number	Rate	Number	Rate	Number	Rate	Number	Rate				
Black female																
All ages	10,760	736.9	10,650	738.1	43,720	749.4	44,940	773.4	131,750	745.1	130,740	746.7				
Under 1 year	} 380	104.8	440	120.2	1,220	² 1,323.9	1,290	² 1,269.8	4,040	² 1,469.1	3,980	² 1,292.2				
1–4 years					170	44.7	280	72.3	690	59.0	800	65.7				
5–14 years					240	24.5	280	29.9	770	25.9	680	23.3				
15–24 years					200	88.2	140	62.5	620	67.3	480	54.2	1,900	69.2	1,620	59.2
25–34 years					320	137.5	410	175.4	1,160	124.4	1,610	169.8	4,000	140.7	4,890	171.7
35–44 years	740	312.8	610	264.5	2,530	268.9	2,900	312.5	8,020	280.9	8,890	318.8				
45–54 years	930	584.5	920	608.3	3,610	570.6	3,710	611.4	11,100	584.5	11,080	612.8				
55–64 years	1,490	1,457.3	1,240	1,246.1	6,070	1,491.5	5,390	1,344.4	16,850	1,372.1	16,170	1,338.6				
65–74 years	1,970	2,507.1	2,060	2,651.0	8,150	2,596.5	8,540	2,721.7	25,540	2,680.0	25,040	2,646.9				
75–84 years	2,510	5,624.0	2,660	6,111.5	10,490	5,884.4	10,790	6,143.4	31,650	5,872.0	31,100	5,879.0				
85 years and over	2,190	12,997.6	2,160	13,242.2	9,370	13,917.5	9,610	14,607.2	27,070	13,204.9	26,400	13,333.3				
Not stated	30	...	10	...	80	...	50	...	130	...	100	...				
Age-adjusted rate ³	548.1	...	547.6	...	550.3	...	568.7	...	552.3	...	557.5				

... Category not applicable
¹Includes races other than white and black.
²Death rates under 1 year (based on population estimates) differ from infant mortality rates (based on live births); see [table 9](#) for infant mortality rates.
³For method of computation, see [Technical notes](#).

NOTES: Figures include all revisions received from the States. Cumulative and 12-month figures for the current year reflect revisions received for previous months, and figures for earlier years may differ from those previously published. Data include adjustments for Utah, which is not included in the sample for April 1997.

Table 6. Provisional number of deaths and death rates for 72 selected causes, Human immunodeficiency virus infection, and Alzheimer's disease: United States, April 1996 and 1997, cumulative figures 1996 and 1997, and 12 months ending with April 1996 and 1997

[Data are provisional, estimated from a 10-percent sample of deaths. Rates on an annual basis per 100,000 estimated population. Because of rounding of estimates, figures may not add to totals. For method of computation and information on standard errors of the estimates, see [Technical notes](#). For explanation of asterisks preceding cause-of-death categories, see [Technical notes](#)]

Cause of death (Based on the <i>Ninth Revision, International Classification of Diseases, 1975</i>)	April		April		January–April		January–April		12 months ending with April		12 months ending with April	
	1997		1996		1997		1996		1997		1996	
	Number	Rate	Number	Rate	Number	Rate	Number	Rate	Number	Rate	Number	Rate
All causes	189,000	861.3	192,000	883.3	795,000	907.1	810,000	927.6	2,296,000	862.8	2,298,000	871.6
Shigellosis and amebiasis	—	*	—	*	—	*	—	*	—	*	—	*
Certain other intestinal infections	60	*	40	*	280	0.3	340	0.4	760	0.3	770	0.3
Tuberculosis	110	0.5	70	*	400	0.4	380	0.4	1,020	0.4	1,140	0.4
Tuberculosis of respiratory system	100	*	30	*	340	0.4	290	0.3	840	0.3	900	0.3
Other tuberculosis	10	*	40	*	60	*	90	*	180	0.1	250	0.1
Whooping cough	—	*	—	*	10	*	10	*	10	*	20	*
Streptococcal sore throat, scarlatina, and erysipelas	—	*	—	*	—	*	—	*	—	*	—	*
Meningococcal infection	30	*	10	*	170	0.2	110	0.1	330	0.1	270	0.1
Septicemia	2,050	9.3	2,080	9.6	7,940	9.0	7,750	8.9	21,860	8.2	21,000	8.0
Acute poliomyelitis	—	*	—	*	—	*	—	*	—	*	—	*
Measles	10	*	—	*	10	*	—	*	10	*	—	*
Viral hepatitis	390	1.8	290	1.3	1,370	1.6	1,180	1.3	4,010	1.5	3,540	1.3
Syphilis	30	*	—	*	30	*	—	*	60	*	50	*
All other infectious and parasitic diseases ¹	2,020	9.2	3,410	15.7	8,430	9.6	14,570	16.7	31,800	11.9	46,550	17.7
Malignant neoplasms, including neoplasms of lymphatic and hematopoietic tissues	42,500	193.7	42,940	198.0	174,060	198.5	181,200	207.4	535,190	201.1	536,810	203.6
Malignant neoplasms of lip, oral cavity, and pharynx	650	3.0	690	3.2	2,630	3.0	2,670	3.1	7,800	2.9	7,800	3.0
Malignant neoplasms of digestive organs and peritoneum	9,170	41.8	9,940	45.8	40,480	46.2	42,080	48.2	125,240	47.1	125,540	47.6
Malignant neoplasms of respiratory and intrathoracic organs	12,600	57.4	12,580	58.0	51,630	58.9	53,380	61.1	157,310	59.1	155,990	59.2
Malignant neoplasm of breast	3,470	15.8	3,470	16.0	13,440	15.3	14,580	16.7	42,400	15.9	43,510	16.5
Malignant neoplasms of genital organs	4,920	22.4	4,770	22.0	19,350	22.1	19,740	22.6	59,850	22.5	59,820	22.7
Malignant neoplasms of urinary organs	2,220	10.1	2,010	9.3	8,010	9.1	7,900	9.0	23,140	8.7	23,090	8.8
Malignant neoplasms of all other and unspecified sites	5,060	23.1	5,220	24.1	20,430	23.3	22,190	25.4	64,500	24.2	66,100	25.1
Leukemia	1,730	7.9	1,660	7.6	6,640	7.6	7,080	8.1	19,900	7.5	20,170	7.7
Other malignant neoplasms of lymphatic and hematopoietic tissues	2,680	12.2	2,610	12.0	11,440	13.0	11,580	13.2	35,060	13.2	34,800	13.2
Benign neoplasms, carcinoma in situ, and neoplasms of uncertain behavior and of unspecified nature	580	2.6	680	3.1	2,480	2.8	2,690	3.1	7,440	2.8	7,910	3.0
Diabetes mellitus	4,790	21.8	5,130	23.7	20,890	23.8	21,200	24.3	61,160	23.0	58,550	22.2
Nutritional deficiencies	360	1.6	340	1.6	1,280	1.5	1,480	1.7	3,590	1.3	3,970	1.5
Anemias	300	1.4	360	1.7	1,580	1.8	1,320	1.5	4,220	1.6	4,060	1.5
Meningitis	90	*	60	*	220	0.2	240	0.3	560	0.2	670	0.3
Major cardiovascular diseases	78,200	356.3	78,870	363.7	328,890	375.1	334,260	382.6	936,270	351.8	935,530	354.8
Diseases of heart	60,290	274.7	61,790	284.9	252,400	287.8	260,060	297.7	721,480	271.1	726,300	275.5
Rheumatic fever and rheumatic heart disease	470	2.1	460	2.1	1,610	1.8	1,900	2.2	4,570	1.7	4,960	1.9
Hypertensive heart disease	2,100	9.6	2,120	9.8	9,040	10.3	9,010	10.3	26,040	9.8	25,060	9.5
Hypertensive heart and renal disease	170	0.8	220	1.0	790	0.9	820	0.9	2,180	0.8	2,240	0.8
Ischemic heart disease	38,610	175.9	39,220	180.9	163,070	186.0	167,720	192.0	468,360	176.0	471,540	178.9
Acute myocardial infarction	17,000	77.5	17,950	82.8	72,770	83.0	76,130	87.1	210,520	79.1	214,060	81.2
Other acute and subacute forms of ischemic heart disease	270	1.2	210	1.0	1,040	1.2	870	1.0	2,860	1.1	2,500	0.9
Angina pectoris	40	*	30	*	210	0.2	240	0.3	660	0.2	700	0.3
Old myocardial infarction and other forms of chronic ischemic heart disease	21,300	97.1	21,030	97.0	89,050	101.5	90,480	103.5	254,320	95.6	254,280	96.4
Other diseases of endocardium	1,220	5.5	1,390	6.4	5,580	6.4	5,920	6.8	16,150	6.1	15,760	6.0
All other forms of heart disease	17,710	80.7	18,390	84.8	72,310	82.5	74,700	85.5	204,180	76.7	206,750	78.4
Hypertension with or without renal disease	1,070	4.9	1,070	4.9	4,640	5.3	4,380	5.0	12,450	4.7	12,380	4.7
Cerebrovascular diseases	13,020	59.3	12,590	58.0	56,390	64.3	55,380	63.4	159,570	60.0	155,450	59.0
Intracerebral and other intracranial hemorrhage	1,860	8.5	1,900	8.8	8,590	9.8	8,020	9.2	24,080	9.0	21,940	8.3
Cerebral thrombosis and unspecified occlusion of cerebral arteries	1,030	4.7	910	4.2	4,350	5.0	4,280	4.9	12,520	4.7	12,670	4.8
Cerebral embolism	60	*	80	*	180	0.2	220	0.2	770	0.3	680	0.3
All other and late effects of cerebrovascular diseases	10,080	45.9	9,700	44.7	43,280	49.4	42,860	49.0	122,210	45.9	120,160	45.6

See footnotes at end of table.

Table 6. Provisional number of deaths and death rates for 72 selected causes, Human immunodeficiency virus infection, and Alzheimer's disease: United States, April 1996 and 1997, cumulative figures 1996 and 1997, and 12 months ending with April 1996 and 1997—Con.

[Data are provisional, estimated from a 10-percent sample of deaths. Rates on an annual basis per 100,000 estimated population. Because of rounding of estimates, figures may not add to totals. For method of computation and information on standard errors of the estimates, see [Technical notes](#). For explanation of asterisks preceding cause-of-death categories, see [Technical notes](#)]

Cause of death (Based on the <i>Ninth Revision, International Classification of Diseases, 1975</i>)	April		1996		1997		January–April		12 months ending with April		1996		
	1997		1996		1997		1996		1997		1996		
	Number	Rate	Number	Rate	Number	Rate	Number	Rate	Number	Rate	Number	Rate	
Cerebrovascular diseases—Con.													
Atherosclerosis440	1,440	6.6	1,420	6.5	5,890	6.7	5,550	6.3	15,920	6.0	15,800	6.0
Other diseases of arteries, arterioles, and capillaries441–448	2,380	10.8	2,010	9.3	9,570	10.9	8,890	10.2	26,860	10.1	25,600	9.7
Acute bronchitis and bronchiolitis466	50	*	30	*	290	0.3	200	0.2	510	0.2	440	0.2
Pneumonia and influenza480–487	7,340	33.4	7,090	32.7	35,270	40.2	32,640	37.4	84,180	31.6	78,970	30.0
Pneumonia480–486	7,300	33.3	7,060	32.5	34,550	39.4	32,200	36.9	83,240	31.3	78,450	29.8
Influenza487	40	*	30	*	720	0.8	440	0.5	940	0.4	520	0.2
Chronic obstructive pulmonary diseases and allied conditions490–496	9,380	42.7	9,520	43.9	40,540	46.2	40,090	45.9	105,920	39.8	102,970	39.1
Bronchitis, chronic and unspecified490–491	270	1.2	290	1.3	1,310	1.5	1,430	1.6	2,830	1.1	3,120	1.2
Emphysema492	1,640	7.5	1,510	7.0	6,970	7.9	6,550	7.5	17,220	6.5	16,730	6.3
Asthma493	410	1.9	410	1.9	2,070	2.4	1,680	1.9	5,540	2.1	5,120	1.9
Other chronic obstructive pulmonary diseases and allied conditions494–496	7,070	32.2	7,310	33.7	30,200	34.4	30,440	34.8	80,330	30.2	78,000	29.6
Ulcer of stomach and duodenum531–533	410	1.9	450	2.1	1,750	2.0	1,870	2.1	4,670	1.8	5,670	2.2
Appendicitis540–543	10	*	10	*	80	*	150	0.2	410	0.2	410	0.2
Hernia of abdominal cavity and intestinal obstruction without mention of hernia550–553,560	690	3.1	580	2.7	2,040	2.3	2,280	2.6	6,210	2.3	6,020	2.3
Chronic liver disease and cirrhosis571	1,860	8.5	1,780	8.2	8,210	9.4	8,420	9.6	24,260	9.1	24,480	9.3
Cholelithiasis and other disorders of gallbladder574–575	280	1.3	130	0.6	940	1.1	810	0.9	2,800	1.1	2,510	1.0
Nephritis and nephrotic syndrome, and nephrosis580–589	2,000	9.1	2,190	10.1	9,070	10.3	9,530	10.9	26,510	10.0	25,890	9.8
Acute glomerulonephritis and nephrotic syndrome580–581	10	*	20	*	70	*	80	*	210	0.1	260	0.1
Chronic glomerulonephritis, nephritis and nephropathy, not specified as acute or chronic, and renal sclerosis, unspecified582–583,587	90	*	60	*	610	0.7	570	0.7	1,840	0.7	1,430	0.5
Renal failure, disorders resulting from impaired renal function, and small kidney of unknown cause584–586,588–589	1,900	8.7	2,110	9.7	8,390	9.6	8,890	10.2	24,470	9.2	24,210	9.2
Infections of kidney590	40	*	100	*	220	0.2	350	0.4	770	0.3	850	0.3
Hyperplasia of prostate600	40	*	30	*	200	0.2	170	0.2	450	0.2	430	0.2
Complications of pregnancy, childbirth, and the puerperium630–676	30	*	50	*	80	*	110	0.1	250	0.1	350	0.1
Pregnancy with abortive outcome630–638	–	*	–	*	20	*	10	*	30	*	30	*
Other complications of pregnancy, childbirth, and the puerperium640–676	30	*	50	*	60	*	100	*	220	0.1	320	0.1
Congenital anomalies740–759	940	4.3	960	4.4	3,840	4.4	3,770	4.3	11,540	4.3	11,490	4.4
Certain conditions originating in the perinatal period760–779	1,020	4.6	1,060	4.9	3,840	4.4	4,190	4.8	12,550	4.7	13,230	5.0
Birth trauma, intrauterine hypoxia, birth asphyxia, and respiratory distress syndrome767–769	140	0.6	130	0.6	620	0.7	660	0.8	2,110	0.8	2,010	0.8
Other conditions originating in the perinatal period760–766,770–779	880	4.0	930	4.3	3,220	3.7	3,530	4.0	10,440	3.9	11,220	4.3
Symptoms, signs, and ill-defined conditions780–799	3,730	17.0	3,360	15.5	15,340	17.5	14,480	16.6	42,630	16.0	42,130	16.0
All other diseases	Residual	19,150	87.3	19,060	87.9	82,250	93.8	78,610	90.0	222,680	83.7	215,950	81.9
Accidents and adverse effects	E800–E949	6,680	30.4	6,950	32.0	27,350	31.2	28,900	33.1	89,210	33.5	90,310	34.3
Motor vehicle accidents	E810–E825	3,170	14.4	3,170	14.6	12,850	14.6	13,490	15.4	43,060	16.2	44,000	16.7
All other accidents and adverse effects	E800–E807,E826–E949	3,510	16.0	3,780	17.4	14,500	16.5	15,410	17.6	46,160	17.3	46,310	17.6
Suicide	E950–E959	2,350	10.7	2,340	10.8	9,400	10.7	9,260	10.6	30,320	11.4	28,910	11.0
Homicide and legal intervention	E960–E978	1,340	6.1	1,420	6.5	5,980	6.8	7,110	8.1	19,750	7.4	21,920	8.3
All other external causes	E980–E999	150	0.7	170	0.8	680	0.8	790	0.9	2,210	0.8	2,370	0.9
Human immunodeficiency virus infection ²	*042–*044	1,620	7.4	2,890	13.3	6,440	7.3	12,640	14.5	25,040	9.4	40,300	15.3
Alzheimer's disease331.0	1,850	8.4	1,920	8.8	8,700	9.9	8,050	9.2	22,590	8.5	21,060	8.0

– Quantity zero. * Figure does not meet standards of reliability or precision; see [Technical notes](#).
¹Includes data for deaths due to Human immunodeficiency virus infection (categories *042–*044) shown separately below; see [Technical notes](#).
²Included in All other infectious and parasitic diseases shown above.

NOTES: Figures include all revisions received from the States. Cumulative and 12-month figures for the current year reflect revisions received for previous months, and figures for earlier years may differ from those previously published. Data include adjustments for Utah, which is not included in the sample for April 1997.

Table 7. Provisional number of deaths and death rates for 16 selected subcategories of Malignant neoplasms, including neoplasms of lymphatic and hematopoietic tissues: United States, April 1996 and 1997, cumulative figures 1996 and 1997, and 12 months ending with April 1996 and 1997

[Data are provisional, estimated from a 10-percent sample of deaths. Rates on an annual basis per 100,000 estimated population. Because of rounding of estimates, figures may not add to totals. For method of computation and information on standard errors of the estimates, see [Technical notes](#)]

Cause of death (Based on the <i>Ninth Revision, International Classification of Diseases, 1975</i>)	April				January–April				12 months ending with April			
	1997		1996		1997		1996		1997		1996	
	Number	Rate	Number	Rate	Number	Rate	Number	Rate	Number	Rate	Number	Rate
Malignant neoplasms, including neoplasms of lymphatic and hematopoietic tissues ¹140–208	42,500	193.7	42,940	198.0	174,060	198.5	181,200	207.4	535,190	201.1	536,810	203.6
Malignant neoplasm of esophagus150	570	2.6	970	4.5	3,560	4.1	3,760	4.3	10,950	4.1	10,520	4.0
Malignant neoplasm of stomach151	990	4.5	970	4.5	4,070	4.6	4,190	4.8	13,270	5.0	13,410	5.1
Malignant neoplasms of colon, rectum, rectosigmoid junction, and anus153,154	4,070	18.5	4,310	19.9	17,920	20.4	19,100	21.8	56,070	21.1	56,130	21.3
Malignant neoplasm of pancreas157	2,110	9.6	2,230	10.3	8,930	10.2	9,010	10.3	27,510	10.3	27,320	10.4
Malignant neoplasms of trachea, bronchus, and lung162	12,190	55.5	12,190	56.2	50,080	57.1	51,640	59.1	152,200	57.2	150,870	57.2
Malignant melanoma of skin172	550	2.5	690	3.2	2,410	2.7	2,040	2.3	7,400	2.8	6,700	2.5
Malignant neoplasm of cervix uteri180	320	1.4	320	1.5	1,440	1.6	1,400	1.6	4,520	1.7	4,840	1.8
Malignant neoplasms of body of uterus and of uterus, part unspecified179,182	590	2.7	450	2.1	1,930	2.2	1,900	2.2	5,810	2.2	5,950	2.3
Malignant neoplasm of ovary183.0	1,360	6.2	970	4.5	4,800	5.5	4,320	5.0	13,980	5.3	13,310	5.0
Malignant neoplasm of prostate185	2,510	11.4	2,890	13.3	10,680	12.2	11,480	13.1	33,690	12.7	33,870	12.8
Malignant neoplasm of bladder188	1,180	5.4	1,040	4.8	4,010	4.6	4,030	4.6	11,250	4.2	11,520	4.4
Malignant neoplasms of kidney and other and unspecified urinary organs189	1,040	4.7	970	4.5	4,000	4.6	3,870	4.4	11,900	4.5	11,570	4.4
Malignant neoplasms of brain and other and unspecified parts of nervous system191,192	990	4.5	890	4.1	3,480	4.0	4,070	4.7	11,000	4.1	11,840	4.5
Hodgkin's disease201	60	*	120	0.5	440	0.5	620	0.7	1,280	0.5	1,640	0.6
Malignant lymphoma other than Hodgkin's disease200,202	1,840	8.4	1,570	7.2	7,620	8.7	7,330	8.4	23,470	8.8	22,780	8.6
Multiple myeloma and other immunoproliferative neoplasms203	780	3.6	920	4.2	3,380	3.9	3,630	4.1	10,310	3.9	10,380	3.9

* Figure does not meet standards of reliability or precision; see [Technical notes](#).

¹Includes figures for subcategories not shown below.

NOTES: Figures include all revisions received from the States. Cumulative and 12-month figures for the current year reflect revisions received for previous months, and figures for earlier years may differ from those previously published. Data include adjustments for Utah, which is not included in the sample for April 1997.

Table 8. Provisional number of deaths and death rates for firearm mortality: United States, April 1996 and 1997, cumulative figures 1996 and 1997, and 12 months ending with April 1996 and 1997

[Data are provisional, estimated from a 10-percent sample of deaths. Rates on an annual basis per 100,000 estimated population. Because of rounding of estimates, figures may not add to totals. For method of computation and information on standard errors of the estimates, see [Technical notes](#)]

Cause of death (Based on the <i>Ninth Revision International Classification of Diseases, 1975</i>)	April				January–April				12 months ending with April			
	1997		1996		1997		1996		1997		1996	
	Number	Rate	Number	Rate	Number	Rate	Number	Rate	Number	Rate	Number	Rate
Injury by firearmsE922,E955.0–E955.4,E965.0–965.4,E970,E985.0–E985.4	2,440	11.1	2,440	11.2	10,470	11.9	11,420	13.1	33,520	12.6	34,790	13.2
Accident caused by firearm missileE922	80	*	80	*	350	0.4	430	0.5	1,250	0.5	1,350	0.5
Suicide by firearmsE955.0–E955.4	1,390	6.3	1,450	6.7	5,660	6.4	5,920	6.8	18,080	6.8	17,600	6.7
Homicide and legal intervention by firearmsE965.0–E965.4,E970	970	4.4	880	4.1	4,420	5.0	4,980	5.7	14,020	5.3	15,610	5.9
Injury by firearms, undetermined whether accidentally or purposely inflictedE985.0–E985.4	–	*	30	*	50	*	90	*	170	0.1	230	0.1

* Figure does not meet standards of reliability or precision; see [Technical notes](#).

- Quantity zero.

NOTES: Figures include all revisions received from the States. Cumulative and 12-month figures for the current year reflect revisions received for previous months, and figures for earlier years may differ from those previously published. Data include adjustments for Utah, which is not included in the sample for April 1997.

Table 9. Provisional number of deaths under 1 year and infant mortality rates, by age and for 10 selected causes: United States, April 1996 and 1997, cumulative figures 1996 and 1997, and 12 months ending with April 1996 and 1997

[Data are provisional, estimated from a 10-percent sample of deaths. Rates on an annual basis per 100,000 live births. Because of rounding of estimates, figures may not add to totals. For method of computation and information on standard errors of the estimates, see [Technical notes](#)]

Age and cause of death (Based on the <i>Ninth Revision International Classification of Diseases, 1975</i>)	April				January–April				12 months ending with April			
	1997		1996		1997		1996		1997		1996	
	Number	Rate	Number	Rate	Number	Rate	Number	Rate	Number	Rate	Number	Rate
Total, under 1 year	2,100	631.9	2,300	746.2	8,800	707.1	9,400	749.8	27,500	708.9	28,600	745.0
Under 28 days	1,350	407.6	1,570	499.8	5,290	424.3	5,890	468.4	17,880	461.4	18,390	478.7
28 days–11 months	740	223.4	770	245.1	3,520	282.3	3,540	281.5	9,590	247.5	10,200	265.5
Certain gastrointestinal diseases	10	*	40	*	60	*	80	*	200	5.2	200	5.2
Pneumonia and influenza	30	*	50	*	100	*	160	12.7	270	7.0	360	9.4
Congenital anomalies	500	151.0	530	168.7	2,070	166.0	2,040	162.2	6,540	168.8	6,060	157.7
Disorders relating to short gestation and unspecified low birthweight	240	72.5	360	114.6	1,010	81.0	1,180	93.8	3,390	87.5	3,460	90.1
Birth trauma	20	*	10	*	30	*	90	*	110	2.8	250	6.5
Intrauterine hypoxia and birth asphyxia	–	*	50	*	140	11.2	180	14.3	480	12.4	480	12.5
Respiratory distress syndrome	100	*	70	*	400	32.1	370	29.4	1,420	36.6	1,200	31.2
Other conditions originating in the perinatal period	610	184.2	570	181.4	2,160	173.2	2,320	184.5	6,940	179.1	7,680	199.9
Sudden infant death syndrome	130	39.2	220	70.0	630	50.5	1,020	81.1	2,210	57.0	2,770	72.1
All other causes	460	138.9	450	143.2	2,220	178.0	1,980	157.4	5,900	152.2	6,130	159.6

* Figure does not meet standards of reliability or precision; see [Technical notes](#).

– Quantity zero.

NOTES: Figures include all revisions received from the States. Cumulative and 12-month figures for the current year reflect revisions received for previous months, and figures for earlier years may differ from those previously published. Data include adjustments for Utah, which is not included in the sample for April 1997.

Technical notes

Nature and sources of data

Data in this report are provisional unless otherwise specified and include only events occurring within the United States (50 States and the District of Columbia). Mortality data exclude fetal deaths. Data for the Commonwealth of Puerto Rico are not included in the U.S. totals.

Birth, death, and infant death figures in [tables 2](#) and [4](#) for each State are estimates by State of residence. These estimates are derived by applying adjustment ratios to the actual counts of certificates for all events occurring in the State and received in registration offices during a 1-month period regardless of date of the event. The adjustment ratios for each data year represent the observed relationship between final State occurrence figures and final State residence figures for the three most recent years for which final data were available and are expressed as a single ratio for each State. As in previous years, monthly State marriage and divorce figures represent the actual count of all events occurring in the State (State of occurrence) that were received in the registration offices during the 1-month period. Delay in the receipt of certificates in a registration office may result in a low State figure for a given month followed by a high figure for the month(s) in which the delayed records are received. Data for previous months and cumulative data include revised figures received from the States.

Figures for births, deaths, and infant deaths for California in [tables 2](#) and [4](#) contain adjustments for varying lengths of State reporting periods. Figures for Texas for all events shown in [tables 2–4](#) also are adjusted for varying lengths of State reporting periods. The figures for both States are adjusted by the ratio between the number of days in the data month and the number of days in the State reporting period. The adjusted figures are included in the U.S. totals shown elsewhere in this report.

U.S. totals for births, deaths, and infant deaths are based on the State estimates by State of residence and, therefore, in effect, exclude events to nonresidents of the United States. Events to nonresidents of the United States are included in all

marriage and divorce figures. The effect of excluding events to nonresidents from the U.S. totals is small.

Provisional totals for the United States include estimates for State data shown as not available. Provisional totals for births and marriages for the entire United States include adjustments for observed differences between provisional and final monthly figures.

Divorce figures include reported annulments. The monthly national divorce estimate is obtained by multiplying the total for the reporting areas by the ratio observed between the most recent final annual divorce total for the United States and the provisional total for the reporting areas combined.

Random variation—Although the counts in this report are not subject to sampling variability (except the Current Mortality Sample), they may be affected by random variation. When the number of events is small and the probability of such an event is small, considerable caution must be observed in interpreting the data. Such infrequent events may be assumed to follow a Poisson probability distribution. For this distribution a simple approximation may be used to estimate the random variation as follows:

If N is the number of events in the population and R is the corresponding rate, the chances are 19 in 20 that

$$1. N - 2\sqrt{N} \text{ and } N + 2\sqrt{N}$$

covers the “true” number of events.

$$2. R - 2 \frac{R}{\sqrt{N}} \text{ and } R + 2 \frac{R}{\sqrt{N}}$$

covers the “true” rate.

If the rate R_1 corresponding to N_1 events is compared with the rate R_2 corresponding to N_2 events, the difference between the two rates may be regarded as statistically significant at the 0.05 level if it exceeds

$$2 \sqrt{\frac{R_1^2}{N_1} + \frac{R_2^2}{N_2}}$$

Additional information on random variation in numbers of events, rates, and ratios may be found in the technical appendixes of *Vital Statistics of the United States, 1992, Volumes I and II*.

Rates

Rates are on an annual basis and, except for infant mortality rates, are per 1,000 or 100,000 estimated population residing in the United States. The populations used for computing these rates are furnished by the U.S. Bureau of the Census. Rates shown in this report beginning with 1992 were computed using populations based on the 1990 Census enumeration comparable to those used for final data. Monthly rates are based on populations estimated for the specific month. Year-to-date rates are averages of monthly rates that have been weighted by the number of days in the corresponding months. Rates for 12-month periods are the sum of events for the period per population estimated at the midpoint of the period.

Infant mortality rates are deaths under 1 year of age for the specified period (monthly, year-to-date, or 12-month period) per 1,000 or 100,000 live births. Births used for computing monthly and year-to-date infant mortality rates are adjusted for monthly variation in the number of births. Births used to compute 12-month rates do not contain this adjustment. Births used for computing infant mortality rates are not corrected for observed differences between provisional and final monthly figures as described earlier in “[Nature and sources of data.](#)” Because monthly infant mortality rates are based on relatively few events, they are highly variable. Therefore, comparisons of monthly infant mortality rates should be interpreted cautiously; see “[Random variation.](#)”

Age-adjusted death rates are used to compare relative mortality risks across groups and over time. However, they should be viewed as constructs or indexes rather than as direct or actual measures of mortality risk. Statistically, they are weighted averages of the age-specific death rates, where the weights represent the fixed population proportions by age. See chapter 5 of an earlier report (1). The age-adjusted death rates presented in this report were computed by the direct method, that is, by applying age-specific death rates to the U.S. standard million population (2). See also chapter 10 of an earlier report (1). Age groups in [table 5](#) were used to compute the age-adjusted

rates shown in that table. It is important not to compare age-adjusted rates with crude rates.

Current Mortality Sample

The Current Mortality Sample (CMS) is a 10-percent systematic sample of death certificates drawn each month after the certificates are counted in the State registration offices. Deaths and death rates for the United States by age, race, sex, and cause are estimated based on the sample. Because of the additional time required to select and process the certificates, data based on the CMS are published 1 month after publication of the U.S. and State counts. Complete information concerning the underlying cause of death sometimes is not available when the sample is drawn. As a result estimates based on sample counts for certain causes are biased. Correction for bias is not made in this report.

Estimated numbers of deaths based on the sample were proportionately adjusted to be consistent with estimates based on the count of death certificates received in State registration offices.

HIV infection—Beginning with data for 1987, the National Center for Health Statistics introduced categories *042–*044 for classifying and coding Human immunodeficiency virus (HIV) infection. The asterisks before the categories indicate that these codes are not part of the

Ninth Revision, International Classification of Diseases. Deaths classified to these categories are included in All other infectious and parasitic diseases in the List of 72 Selected Causes of Death and are also shown separately at the bottom of table 6.

Sampling variability—Because the estimates of deaths and death rates presented in this report with the exception of total deaths and deaths under 1 year are based on a sample of death certificates, they are subject to sampling variability. The estimated relative standard error in the following table is a measure of the

Relative standard errors for estimated numbers of deaths from the Current Mortality Sample expressed as a percent of the estimate

Estimated number of deaths	Relative standard error of estimate (as percent)	
	170,000 estimated deaths each month	2,000,000 estimated deaths each year
10	94.9	94.9
20	67.1	67.1
50	42.4	42.4
100	30.0	30.0
200	21.2	21.2
500	13.4	13.4
1,000	9.5	9.5
2,000	6.7	6.7
5,000	4.2	4.2
10,000	2.9	3.0
20,000	2.0	2.1
50,000	1.1	1.3
100,000	0.6	0.9
200,000	0.6
500,000	0.4
1,000,000	0.2

sampling error of the estimated number of deaths (or of the estimated death rate) expressed as a percent of the estimate. The first column refers to monthly estimates; the second to annual; cumulative year-to-date totals fall between the two.

The chances are about 2 in 3 that the percent difference between an estimate and the result of a complete count is less than the percent shown. The chances are about 19 in 20 that the percent difference is less than twice the percent shown. A figure based on 100 or fewer estimated deaths has a relative standard error of 30 percent or more and is, therefore, considered unreliable. A rate based on 100 or fewer estimated deaths has been replaced by an asterisk.

Unless otherwise specified comparisons made in the text between death rates based on the CMS were statistically significant at the 0.05 level of significance. Lack of comment in the text about any two rates does not mean that the difference was tested and found not to be significant at this level.

References

1. Feinleib M, Zarate AO, eds. Reconsidering age adjustment procedures: Workshop proceedings. National Center for Health Statistics. Vital Health Stat 4(29). 1992.
2. Grove RD, Hetzel AM. Vital statistics rates in the United States, 1940–1960. Public Health Service. Washington: National Center for Health Statistics. 1968.

Suggested citation

National Center for Health Statistics. Births, marriages, divorces, and deaths for May 1997. Monthly vital statistics report; vol 46 no 5. Hyattsville, Maryland: National Center for Health Statistics. 1997.

Copyright information

All material appearing in this report is in the public domain and may be reproduced or copied without permission; citation as to source, however, is appreciated.

National Center for Health Statistics

Director
Edward J. Sondik, Ph.D.

Deputy Director
Jack R. Anderson

Division of Vital Statistics

Director
Mary Anne Freedman

**DEPARTMENT OF
HEALTH & HUMAN SERVICES**

Centers for Disease Control and Prevention
National Center for Health Statistics
6525 Belcrest Road
Hyattsville, Maryland 20782-2003

FIRST CLASS MAIL
POSTAGE & FEES PAID
PHS/NCHS
PERMIT NO. G-281

OFFICIAL BUSINESS
PENALTY FOR PRIVATE USE, \$300

To receive this publication regularly, contact the National Center for Health Statistics by calling 301-436-8500
E-mail: nchsquery@cdc.gov
Internet: www.cdc.gov/nchswww/nchshome.htm

DHHS Publication No. (PHS) 98-1120
8-0174 (12/97)