

Monthly Vital Statistics Report



Provisional Data From the CENTERS FOR DISEASE CONTROL AND PREVENTION/National Center for Health Statistics

Births, Marriages, Divorces, and Deaths for November 1996

Births

According to provisional reports, an estimated 312,000 births occurred in the United States during November 1996, compared with 306,000 in November 1995. The birth rate, 14.3 live births per 1,000 population, was 1 percent higher than the rate of 14.1 for November 1995. The fertility rate, 63.9 live births per 1,000 women 15–44 years, was 2 percent higher than the comparable rate for November 1995 (62.6). The seasonally adjusted fertility rate (65.9) was also 2 percent higher than the comparable rate for November 1995 (64.6).

During the first 11 months of 1996, an estimated 3,615,000 births occurred, a

1-percent increase from the 3,593,000 reported for the first 11 months of 1995. The birth rate during this period declined by 1 percent from 15.0 in 1995 to 14.9 in 1996.

An estimated 3,914,000 live births occurred in the 12-month period ending with November 1996, a slight increase from the 3,907,000 births reported for the same period a year earlier. The birth rate of 14.8 was 1 percent lower than the rate of 14.9 for the preceding 12-month period. The fertility rate for the most recent 12-month period was 65.7, the same as the rate for the 12 months ending with November 1995. These rates, which had been declining since early 1991, have leveled off in 1996.

Natural increase

As a result of natural increase, the excess of births over deaths, an estimated 121,000 people, or 5.5 persons per 1,000 population, were added to the population during November 1996.

For the 12-month period ending with November 1996, 1,609,000 persons were added to the population. This represented a rate of natural increase of 6.1, the same as the rate for the preceding 12-month period. The unchanged rate of natural increase was due to similar decreases in the birth rate and death rate.

Provisional Vital Statistics for the United States

[Rates for infant deaths are deaths under 1 year per 1,000 live births; fertility rates are live births per 1,000 women aged 15–44 years; all other rates are per 1,000 total population. Data are subject to monthly reporting variation; see [Technical notes](#)]

Item	November				January–November				12 months ending with November				
	Number		Rate		Number		Rate		Number		Rate		
	1996	1995	1996	1995	1996	1995	1996	1995	1996	1995	1996	1995	1994
Live births	312,000	306,000	14.3	14.1	3,615,000	3,593,000	14.9	15.0	3,914,000	3,907,000	14.8	14.9	15.3
Fertility rate	63.9	62.6	66.3	66.1	65.7	65.7	67.2
Deaths	191,000	188,000	8.8	8.7	2,108,000	2,112,000	8.7	8.8	2,305,000	2,302,000	8.7	8.8	8.8
Infant deaths	2,300	2,300	7.2	7.5	25,900	26,900	7.2	7.5	28,300	29,400	7.2	7.6	8.0
Natural increase	121,000	118,000	5.5	5.4	1,507,000	1,481,000	6.2	6.2	1,609,000	1,605,000	6.1	6.1	6.5
Marriages	168,000	174,000	7.7	8.0	2,132,000	2,167,000	8.9	9.1	2,302,000	2,340,000	8.7	8.9	9.1
Divorces	93,000	95,000	4.3	4.4	1,059,000	1,077,000	4.4	4.5	1,151,000	1,180,000	4.3	4.5	4.5
Population base (in millions)	266.1	263.6	265	262.6	260.4

... Category not applicable.

NOTES: Figures include revisions received from the States. Twelve-month figures for the current year reflect revisions received for previous months, and figures for earlier years may differ from those previously published.



U.S. DEPARTMENT OF HEALTH AND HUMAN SERVICES
Centers for Disease Control and Prevention
National Center for Health Statistics



Marriages

An estimated 168,000 marriages were performed in November 1996, 3 percent fewer than were performed in November 1995 (174,000). The marriage rate per 1,000 population for November 1996 (7.7) was 4 percent lower than the rate for November a year earlier (8.0).

The number of couples who married in the first 11 months of 1996 (2,132,000) was 2 percent lower than the number who married in the January–November period in 1995 (2,167,000). The marriage rate for the 11-month period in 1996 (8.9) was also 2 percent below the rate for the same period in 1995 (9.1).

Marriages occurring during the 12-month period ending with November 1996 numbered 2,302,000, 2 percent fewer than for the comparable period a year earlier (2,340,000). The marriage rate for the current period (8.7) was also 2 percent lower than the rate for the period ending with November 1995 (8.9).

Divorces

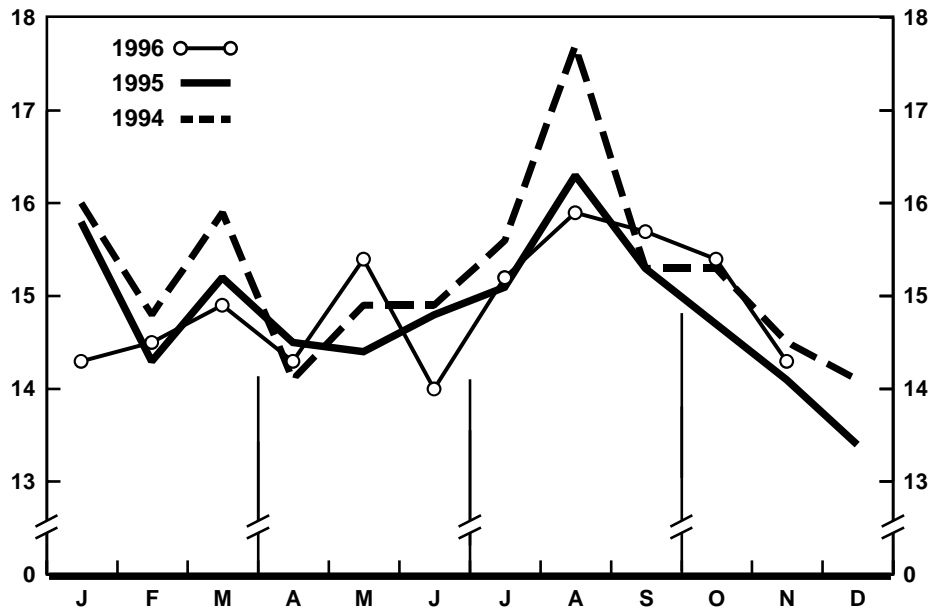
An estimated 93,000 divorces were granted in November 1996, 2 percent fewer than the number granted in November a year earlier (95,000). The divorce rate per 1,000 population for November also declined by 2 percent, from 4.4 in 1995 to 4.3 in 1996.

Approximately 1,059,000 divorces were granted during January–November 1996, 2 percent fewer than for the same period in 1995 (1,077,000). The divorce rate for the 11-month period was 4.4 in November 1996, also 2 percent lower than the cumulative rate in November 1995 (4.5).

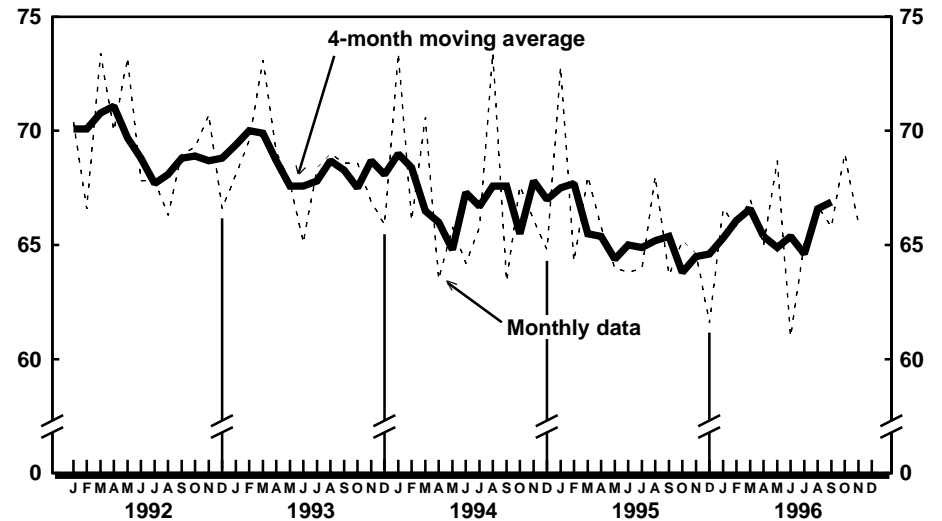
An estimated 1,151,000 couples divorced during the 12-month period ending with November 1996, a 2-percent decline from the number of couples that divorced during the same period a year earlier (1,180,000). The divorce rate per 1,000 population for the current 12-month period (4.3) was 4 percent below the rate for the comparable period a year earlier (4.5).

Deaths

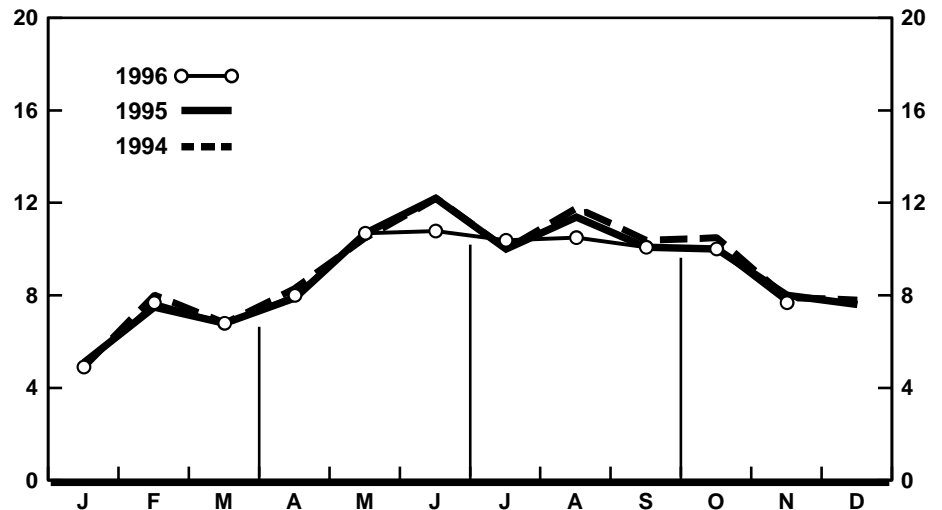
For November 1996 there were an estimated 191,000 deaths in the United States. The death rate was 8.8 deaths per



Provisional birth rates per 1,000 population by month: United States, 1994–96



Provisional seasonally adjusted fertility rates per 1,000 women aged 15–44 years: United States, 1992–96



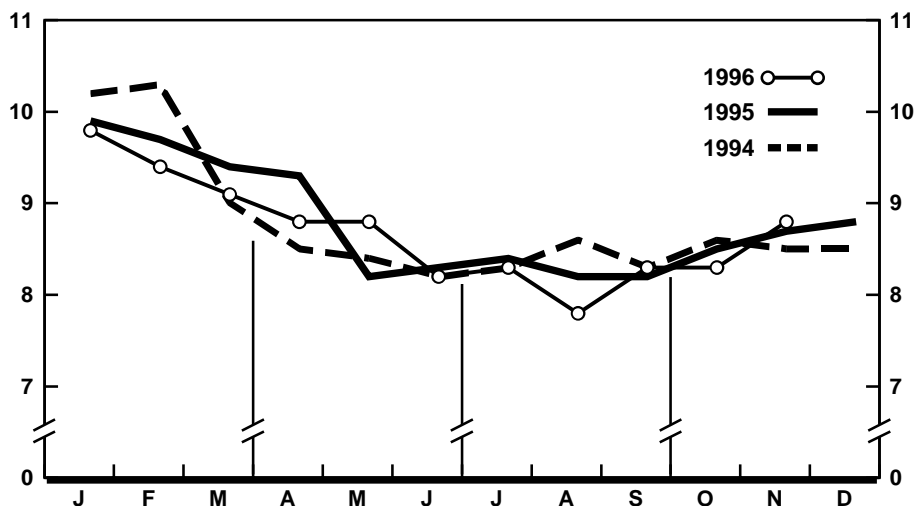
Provisional marriage rates per 1,000 population by month: United States, 1994–96

1,000 population, 1 percent higher than the rate of 8.7 for November a year earlier. Among the 191,000 deaths for November 1996 were 2,300 deaths at ages under 1 year.

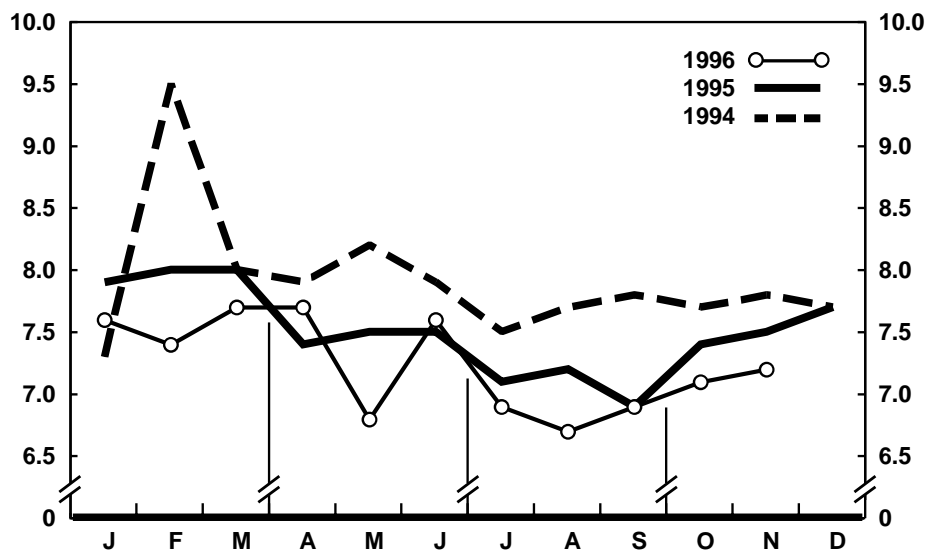
According to provisional statistics, there were 2,108,000 deaths during the first 11 months of 1996, less than 1 percent fewer than the number estimated for January–November 1995 (2,112,000). The death rate, 8.7 per 1,000 population, was 1 percent lower than the rate for January–November 1995 (8.8). Among the 2,108,000 deaths for January–November 1996 were 25,900 deaths at ages under 1 year, yielding an infant mortality rate of 7.2 per 1,000 live births. This rate was 4 percent lower than the rate of 7.5 for the first 11 months of 1995.

The death rate for the 12 months ending with November 1996 was 8.7 deaths per 1,000 population, 1 percent lower than the rate for the comparable 12-month period a year earlier (8.8). The infant mortality rate for this 12-month period was 7.2 per 1,000 live births, 5 percent lower than the rate of 7.6 for the 12 months ending with November 1995.

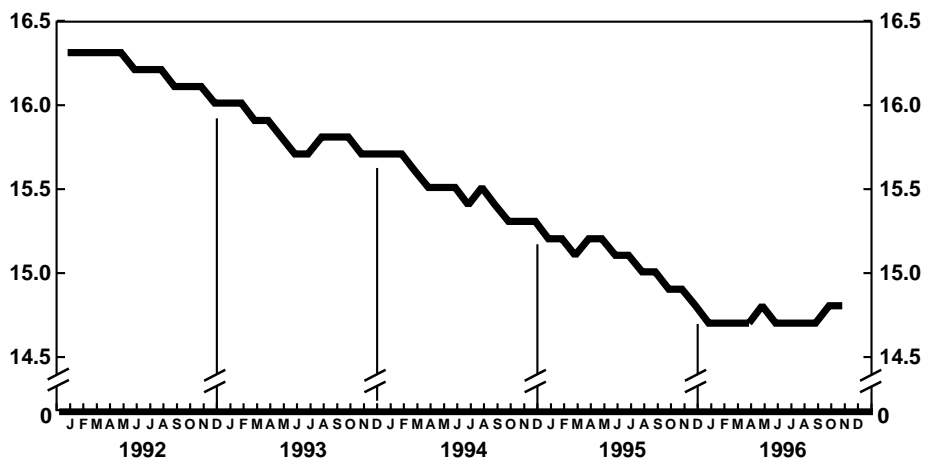
Current Mortality Sample, 12 months ending with October 1996—The provisional death rate for the 12 months ending with October 1996 was 869.3 per 100,000 population, 1 percent lower than the rate of 875.1 for the 12-month period ending October 1995. The provisional age-adjusted death rate for the 12-month period ending with October 1996 was 492.5 per 100,000 U.S. standard population, 2 percent lower than the rate of 503.0 for the 12-month period ending with October 1995. The age-adjusted death rates control for changes and variations in the age composition of the population; therefore, they are better indicators than crude rates for showing changes in mortality risk over time and for showing differences between race-sex groups within the population. Among the race-sex groups, the estimated age-adjusted death rates decreased for white males, black males, and black females. By age the death rate for the total population decreased for the age groups: 1–4 years, 25–34 years, 35–44 years, 45–54 years, and 75–84 years. The death rate increased for the age group 5–14 years.



Provisional death rates per 1,000 population by month: United States, 1994–96



Provisional infant mortality rates per 1,000 live births by month: United States, 1994–96

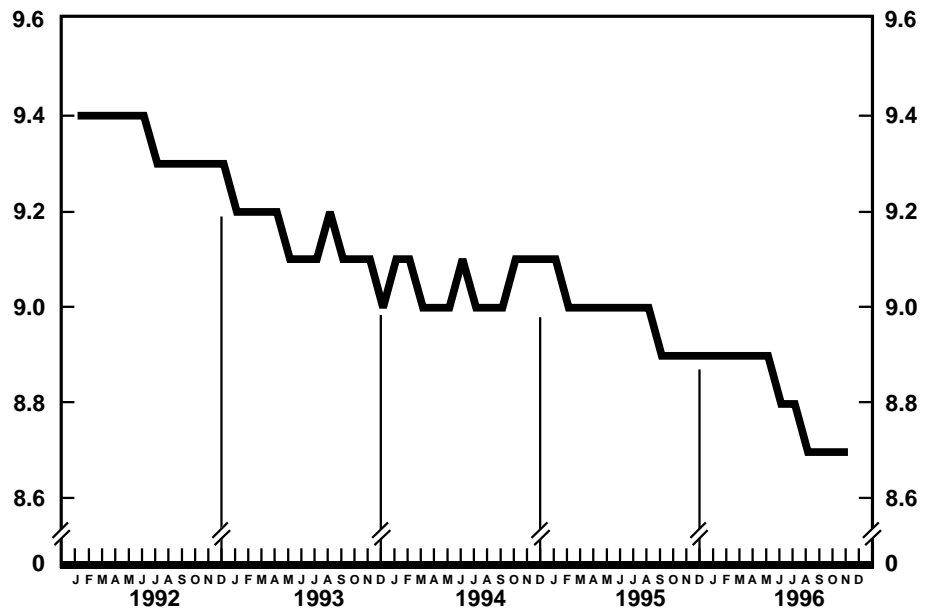


Provisional birth rates per 1,000 population for successive 12-month periods ending with month indicated: United States, 1992–96

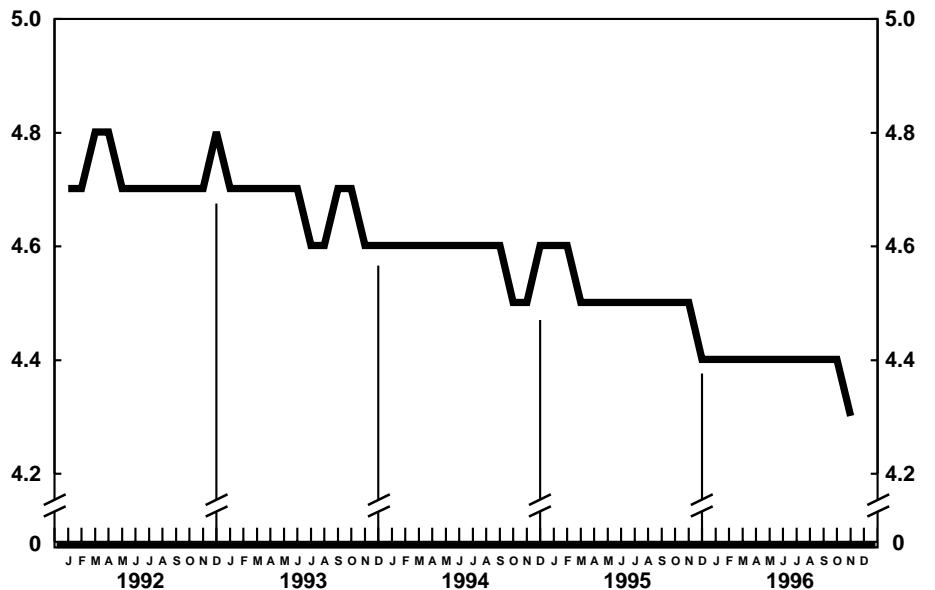
Among the major causes of death, the estimated death rate decreased between the two successive 12-month periods for Atherosclerosis, Chronic liver disease and cirrhosis, and Human immunodeficiency virus infection. The death rate increased between the two successive 12-month periods for Alzheimer's disease. The increase for Alzheimer's disease may reflect changes in diagnostic practices rather than real increases in mortality from this cause.

The death rate for injury by firearms for the 12 months ending with October 1996 was 13.2 per 100,000 population, 4 percent lower than the rate of 13.7 for the comparable 12-month period a year earlier.

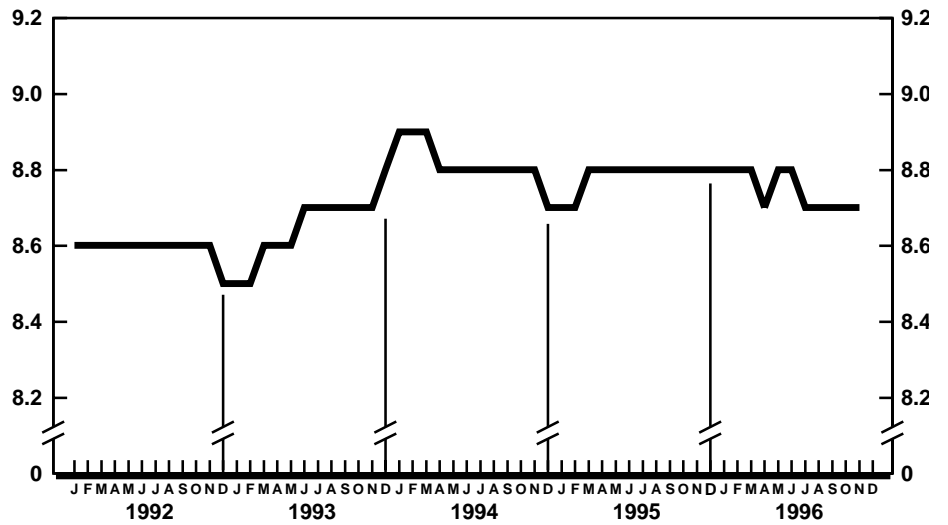
The infant mortality rate for the 12 months ending with October 1996 was 728.2 per 100,000 live births, 4 percent lower than the rate of 757.5 for the same 12-month period a year earlier. For infants under 28 days of age, the 12-month rate ending October 1996 was 478.4, compared with a rate of 483.6 for the 12-month period a year earlier. The change in the mortality rate for infants under 28 days of age was not statistically significant. The infant mortality rate for infants aged 28 days to 11 months was 249.7, 8 percent lower than the rate of 272.5 for the 12-month period a year earlier. Among causes of infant death, changes in the infant mortality rate between the two successive 12-month periods were not statistically significant.



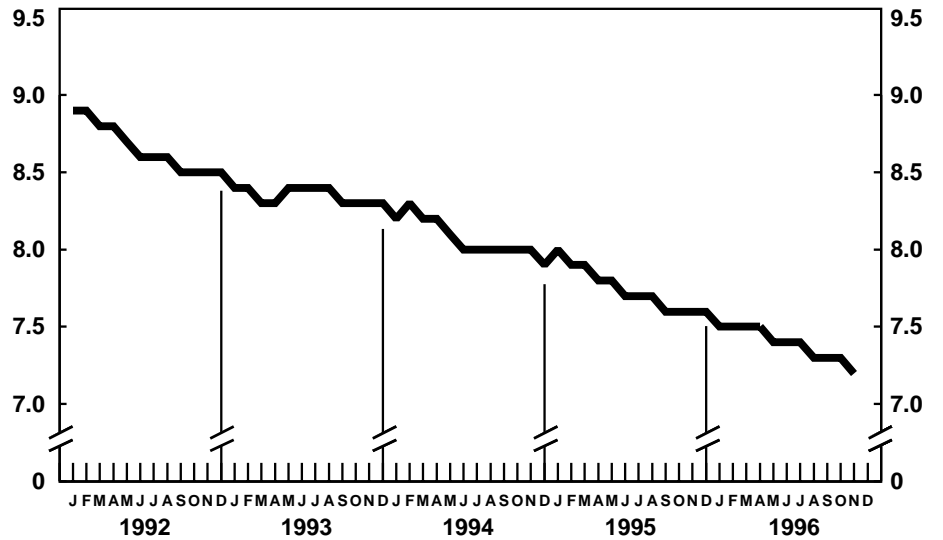
Provisional marriage rates per 1,000 population for successive 12-month periods ending with month indicated: United States, 1992-96



Provisional divorce rates per 1,000 population for successive 12-month periods ending with month indicated: United States, 1992-96



Provisional death rates per 1,000 population for successive 12-month periods ending with month indicated: United States, 1992-96



Provisional infant mortality rates per 1,000 live births for successive 12-month periods ending with month indicated: United States, 1992-96

Table 1. Provisional number of live births, marriages, divorces, deaths, and infant deaths and rates, by month: United States, January 1995–November 1996

[Data are provisional and are subject to monthly reporting variation; see [Technical notes](#)]

Period	Live births				Marriages		Divorces		Deaths		Infant deaths	
	Number	Rate per 1,000 women aged 15–44 years			Number	Rate per 1,000 population	Number	Rate per 1,000 population	Number	Rate per 1,000 population	Number	Rate per 1,000 live births
		Rate per 1,000 population	Unadjusted	Seasonally adjusted ¹								
1995:												
January	350,000	15.8	69.4	72.8	111,000	5.1	96,000	4.3	220,000	9.9	2,700	7.9
February	287,000	14.3	63.1	64.3	146,000	7.5	89,000	4.4	194,000	9.7	2,400	8.0
March	338,000	15.2	67.1	68.0	148,000	6.8	98,000	4.4	208,000	9.4	2,700	8.0
April	313,000	14.5	64.1	65.8	165,000	7.9	98,000	4.6	200,000	9.3	2,300	7.4
May	321,000	14.4	63.5	64.0	238,000	10.7	103,000	4.6	184,000	8.2	2,500	7.5
June	318,000	14.8	65.2	63.8	263,000	12.2	104,000	4.8	180,000	8.3	2,400	7.5
July	337,000	15.1	66.6	64.0	224,000	10.0	97,000	4.4	188,000	8.4	2,400	7.1
August	364,000	16.3	72.1	68.0	254,000	11.4	99,000	4.4	184,000	8.2	2,400	7.2
September	331,000	15.3	67.6	63.7	219,000	10.1	99,000	4.6	178,000	8.2	2,200	6.9
October	328,000	14.7	64.9	65.2	224,000	10.0	98,000	4.4	190,000	8.5	2,500	7.4
November	306,000	14.1	62.6	64.6	174,000	8.0	95,000	4.4	188,000	8.7	2,300	7.5
December	300,000	13.4	59.3	61.6	169,000	7.6	92,000	4.1	197,000	8.8	2,400	7.7
1996:												
January	320,000	14.3	63.4	66.6	105,000	4.9	96,000	4.3	220,000	9.8	2,400	7.6
February	304,000	14.5	64.5	65.8	155,000	7.7	85,000	4.1	197,000	9.4	2,300	7.4
March	333,000	14.9	66.1	67.0	147,000	6.8	93,000	4.2	204,000	9.1	2,500	7.7
April	309,000	14.3	63.3	65.0	168,000	8.0	94,000	4.3	192,000	8.8	2,400	7.7
May	344,000	15.4	68.2	68.7	240,000	10.7	103,000	4.6	197,000	8.8	2,300	6.8
June	304,000	14.0	62.2	61.0	235,000	10.8	104,000	4.8	179,000	8.2	2,300	7.6
July	342,000	15.2	67.8	65.1	233,000	10.4	100,000	4.5	186,000	8.3	2,300	6.9
August	356,000	15.9	70.6	66.7	237,000	10.5	100,000	4.5	176,000	7.8	2,200	6.7
September	342,000	15.7	69.9	65.8	219,000	10.1	92,000	4.2	181,000	8.3	2,300	6.9
October	347,000	15.4	68.8	69.0	225,000	10.0	98,000	4.4	186,000	8.3	2,500	7.1
November	312,000	14.3	63.9	65.9	168,000	7.7	93,000	4.3	191,000	8.8	2,300	7.2

¹The method of seasonal adjustment, developed by the U.S. Bureau of the Census, is described in *The X-11 Variant of the Census Method II Seasonal Adjustment Program*, Technical Paper No. 15 (1967 revision).

NOTE: Figures include all revisions received from the States and, therefore, may differ from those previously published.

Table 2. Provisional number of live births and deaths: Each division and State, November 1995 and 1996, and cumulative figures, 1994–96

[Data are estimates by State of residence; see [Technical notes](#)]

Area	Live births					Deaths				
	November		January–November			November		January–November		
	1996	1995	1996	1995	1994	1996	1995	1996	1995	1994
New England	10,442	10,916	171,933	158,150	160,317	9,760	10,094	106,900	109,642	106,481
Maine	943	1,165	12,551	13,053	13,141	930	904	10,024	10,944	10,228
New Hampshire	1,115	1,019	13,041	13,739	13,610	752	807	8,313	8,269	8,266
Vermont	505	614	6,256	6,295	6,613	338	485	4,518	4,618	4,235
Massachusetts	3,311	4,206	87,998	70,728	76,989	4,456	4,945	49,457	51,251	49,502
Rhode Island	923	944	11,459	11,659	12,346	850	759	8,545	8,697	8,459
Connecticut	3,645	2,968	40,628	42,676	37,618	2,434	2,194	26,043	25,863	25,791
Middle Atlantic	38,958	39,071	483,565	493,045	505,115	28,556	29,984	332,012	339,814	337,821
New York	22,274	20,187	248,965	244,089	254,576	11,961	12,852	149,223	154,687	154,214
New Jersey	8,276	6,752	97,224	107,685	105,169	5,734	6,254	65,515	68,357	66,295
Pennsylvania	8,408	12,132	137,376	141,271	145,370	10,861	10,878	117,274	116,770	117,312
East South Central	49,420	48,115	564,203	574,453	592,480	33,097	32,849	350,828	360,359	361,195
Ohio	12,650	12,797	141,434	143,004	148,997	9,721	9,153	95,363	96,425	97,048
Indiana	6,693	6,305	64,322	75,534	76,297	4,244	4,359	43,303	47,742	48,979
Illinois	15,105	14,150	169,525	170,609	173,499	8,836	8,910	95,457	98,837	97,985
Michigan	9,987	9,587	127,301	123,216	130,071	6,969	7,002	75,878	76,546	76,311
Wisconsin	4,985	5,276	61,621	62,090	63,616	3,327	3,425	40,827	40,809	40,872
West North Central	18,566	19,810	235,225	234,340	232,313	12,816	13,825	152,515	154,150	156,125
Minnesota	4,788	5,018	58,688	58,053	59,338	2,969	3,135	33,433	33,831	33,246
Iowa	3,357	2,620	34,840	31,604	33,003	1,840	2,112	23,662	22,901	24,124
Missouri	4,923	5,593	67,890	69,459	69,996	4,031	4,253	48,709	50,230	51,914
North Dakota	619	630	7,723	7,937	7,902	479	503	5,313	5,499	5,669
South Dakota	712	792	9,149	9,918	9,769	504	676	5,804	6,367	6,287
Nebraska	1,616	1,687	21,315	21,254	20,875	1,208	1,310	13,809	13,831	13,348
Kansas	2,551	3,470	35,620	36,115	31,430	1,785	1,836	21,785	21,491	21,537
South Atlantic	54,494	52,414	607,409	601,585	606,443	34,523	36,839	401,856	400,057	393,053
Delaware	653	842	9,240	9,276	9,577	513	493	5,809	5,600	5,680
Maryland	5,416	4,705	67,014	66,072	65,172	3,229	3,717	38,165	37,541	35,704
District of Columbia	673	689	7,566	8,256	8,998	505	571	5,519	6,059	6,287
Virginia	7,560	10,283	81,848	85,188	86,704	4,323	4,601	47,752	48,345	49,277
West Virginia	1,674	1,444	18,584	19,416	19,743	1,399	1,632	17,356	18,202	18,461
North Carolina	10,352	7,240	99,072	94,033	93,798	5,154	5,513	60,283	59,459	59,054
South Carolina	4,015	4,726	47,082	46,515	47,408	3,071	3,260	31,214	30,136	29,236
Georgia	7,682	8,500	104,107	105,012	101,518	4,411	4,646	54,031	53,234	52,053
Florida	16,469	13,985	172,896	167,817	173,525	11,918	12,406	141,727	141,481	137,301
East South Central	20,146	19,084	209,770	207,567	211,819	13,214	12,795	143,828	145,673	143,267
Kentucky	4,881	4,013	48,850	47,514	47,997	2,849	3,124	34,339	35,461	34,579
Tennessee	6,277	8,418	66,813	69,255	69,450	4,829	4,163	45,948	46,843	45,091
Alabama	5,166	4,432	56,595	56,527	55,790	3,377	3,245	39,125	38,605	39,003
Mississippi	3,822	2,221	37,512	34,271	38,582	2,159	2,263	24,416	24,764	24,594
West South Central	35,702	35,110	440,851	444,172	436,291	16,834	18,672	219,591	218,580	219,296
Arkansas	2,644	3,418	32,821	31,535	31,943	1,958	2,484	23,388	23,671	24,551
Louisiana	5,183	4,641	61,132	61,870	63,163	2,552	2,906	36,810	36,109	37,254
Oklahoma	3,602	3,312	41,826	42,820	41,625	2,697	2,811	30,354	30,016	29,785
Texas ¹	24,273	23,739	305,072	307,947	299,560	9,627	10,471	129,039	128,784	127,706
Mountain	² 13,736	19,037	² 162,229	224,595	224,431	² 6,598	9,998	² 75,123	105,192	104,031
Montana	801	883	9,973	10,291	10,097	611	603	7,045	6,971	6,766
Idaho	1,326	1,470	17,300	16,269	16,008	703	682	7,911	7,754	7,773
Wyoming	461	480	5,686	5,839	6,002	296	308	3,263	3,400	3,234
Colorado	3,417	3,851	43,863	46,340	50,056	1,928	2,212	23,301	23,067	22,261
New Mexico	2,316	2,132	25,092	24,996	25,777	1,005	1,262	11,483	11,565	11,178
Arizona	---	5,805	---	65,657	61,296	---	3,080	---	31,616	32,476
Utah	3,000	2,527	38,020	35,632	35,458	1,016	922	10,207	9,787	9,584
Nevada	2,415	1,889	22,295	19,571	19,737	1,039	929	11,913	11,032	10,759
Pacific	65,900	61,960	651,975	655,865	678,284	33,014	22,537	288,862	277,439	274,865
Washington	5,649	5,997	73,879	72,329	73,269	2,010	3,644	36,528	36,668	35,401
Oregon	3,430	3,374	40,984	40,391	39,090	2,230	2,230	25,568	25,781	25,334
California ¹	54,326	50,435	510,921	516,859	537,007	27,909	15,845	217,313	205,844	205,316
Alaska	896	640	9,270	9,436	11,258	258	217	2,230	2,249	2,199
Hawaii	1,599	1,514	16,921	16,850	17,660	607	601	7,223	6,897	6,615
Puerto Rico ³	5,382	5,518	55,465	61,160	---	---	---	---	---	---

--- Data not available.

¹Figures include adjustments for varying lengths of reporting periods; see [Technical notes](#).

²Excludes figures for State(s) shown below as not available.

³Data for Puerto Rico are not included in U.S. total figures.

NOTES: Figures include all revisions received from the States. Cumulative figures for the current year reflect revisions received for previous months, and figures for earlier years may differ from those previously published.

Table 3. Provisional number of marriages and divorces: Each division and State, November 1995 and 1996, and cumulative figures, 1994–96

[By State of occurrence. Number of events reported; see [Technical notes](#). Divorces include reported annulments]

Area	Marriages					Divorces				
	November		January–November			November		January–November		
	1996	1995	1996	1995	1994	1996	1995	1996	1995	1994
New England	17,715	9,053	180,193	93,405	98,635	3,462	3,027	36,114	36,386	36,033
Maine	---	679	---	10,370	9,924	325	520	4,551	4,875	4,897
New Hampshire	1,104	971	9,232	8,966	9,243	609	456	4,513	4,582	4,632
Vermont	582	719	5,646	5,760	5,441	157	170	2,388	2,566	2,143
Massachusetts	4,012	5,093	38,034	41,097	46,719	1,299	805	12,126	12,046	12,935
Rhode Island	581	491	7,382	6,905	6,627	229	278	2,987	3,368	2,961
Connecticut	1,436	1,100	19,899	20,307	20,681	843	798	9,549	8,949	8,465
Middle Atlantic	22,079	27,362	248,059	253,516	262,292	10,141	9,582	115,246	110,478	110,340
New York ²	10,716	15,900	135,143	134,915	142,043	4,546	4,691	56,894	52,032	52,303
New Jersey	5,289	4,117	46,000	48,102	49,324	1,688	1,811	22,818	22,414	21,885
Pennsylvania	6,074	7,345	66,916	70,499	70,925	3,907	3,080	35,534	36,032	36,152
East North Central	23,034	24,522	285,143	310,253	319,293	¹ 10,907	¹ 11,410	¹ 127,692	¹ 132,678	¹ 135,849
Ohio	6,039	6,693	76,422	84,261	85,600	3,547	3,873	39,851	44,412	45,438
Indiana	2,785	3,612	26,333	46,662	46,314	---	---	---	---	---
Illinois	6,359	7,043	83,183	77,485	85,989	3,313	3,275	36,935	35,644	38,675
Michigan	5,507	4,817	64,588	67,037	66,704	2,668	2,938	35,075	36,605	35,913
Wisconsin	2,344	2,357	34,617	34,808	34,686	1,379	1,324	15,831	16,017	15,823
West North Central	10,845	9,790	139,263	137,293	136,195	5,657	6,366	67,942	69,001	70,848
Minnesota	1,760	1,741	31,431	31,182	30,842	1,089	1,300	13,778	14,308	14,532
Iowa	2,807	1,572	22,634	20,972	21,326	882	768	9,139	9,590	10,186
Missouri	2,993	3,702	42,761	42,044	41,062	1,939	2,251	23,818	24,215	24,727
North Dakota	387	279	4,829	4,325	4,531	189	165	2,122	2,026	1,989
South Dakota	328	379	6,299	6,864	7,051	201	219	2,502	2,621	2,752
Nebraska	964	789	11,865	11,495	11,610	537	607	5,640	5,800	5,945
Kansas	1,606	1,328	19,444	20,411	19,773	820	1,056	10,943	10,441	10,717
South Atlantic	33,441	34,160	405,539	410,234	407,105	¹ 18,778	18,000	¹ 204,253	207,422	212,431
Delaware	422	413	4,895	4,991	4,718	235	277	3,122	3,388	3,164
Maryland	3,200	2,796	38,374	39,299	39,717	1,259	772	14,386	13,103	15,556
District of Columbia	648	841	2,478	2,645	2,593	---	302	---	1,631	2,046
Virginia	5,096	4,967	60,277	63,166	64,124	2,358	2,607	25,646	26,072	26,876
West Virginia	857	840	10,311	10,529	9,812	863	768	7,120	8,299	8,294
North Carolina	4,789	4,365	56,580	57,188	47,082	2,686	2,615	32,772	34,208	33,699
South Carolina	2,742	2,761	39,324	40,932	47,582	1,177	1,134	14,157	13,608	14,114
Georgia	4,760	4,661	55,967	57,651	57,537	3,194	2,525	33,583	33,843	34,225
Florida	10,927	12,516	137,333	133,833	133,940	7,006	7,000	73,467	73,270	74,457
East South Central	17,177	13,993	177,749	177,094	171,930	7,012	7,137	90,379	88,244	90,245
Kentucky	3,540	3,415	40,313	43,410	43,610	1,428	1,806	19,616	21,084	20,752
Tennessee	7,345	5,495	74,339	75,957	71,202	2,680	2,631	31,769	31,224	31,449
Alabama	4,645	3,190	43,820	38,317	36,518	1,791	1,967	24,272	24,119	24,508
Mississippi	1,647	1,893	19,277	19,410	20,600	1,113	733	14,722	11,817	13,536
West South Central	15,940	20,030	261,850	271,450	275,602	¹ 2,957	¹ 11,213	¹ 31,292	¹ 128,060	¹ 129,253
Arkansas	3,207	3,077	32,607	33,036	35,150	1,526	1,406	13,639	14,636	16,307
Louisiana	2,298	3,701	33,884	37,132	38,899	---	---	---	---	---
Oklahoma	1,837	1,993	24,258	26,061	26,809	1,431	1,753	17,653	20,191	19,921
Texas ³	8,598	11,259	171,101	175,221	174,744	---	8,054	---	93,233	93,025
Mountain	¹ 8,945	19,224	¹ 129,101	251,341	250,048	¹ 5,386	¹ 6,037	¹ 55,611	¹ 69,045	¹ 63,765
Montana	268	353	6,187	6,292	6,513	295	347	3,889	3,816	3,786
Idaho	1,092	1,062	14,004	14,528	14,092	633	553	6,416	6,223	6,502
Wyoming	292	338	4,561	4,605	4,453	221	282	2,833	2,953	2,809
Colorado	2,527	1,919	32,958	31,934	32,013	---	---	---	---	---
New Mexico ^{4,5}	1,015	1,107	14,703	13,926	11,321	927	749	10,155	10,498	9,047
Arizona ²	2,654	3,212	36,197	35,663	33,341	2,282	2,295	23,917	25,418	21,360
Utah	1,097	1,659	20,491	20,395	18,902	1,028	723	8,401	8,232	8,398
Nevada	---	9,574	---	123,998	129,413	---	1,088	---	11,905	---
Pacific	30,653	24,573	287,262	266,953	272,540	¹ 5,253	¹ 5,639	¹ 46,009	¹ 49,246	¹ 49,885
Washington	3,606	2,311	36,500	39,444	38,785	2,860	3,720	25,015	27,884	27,676
Oregon	1,618	1,588	23,717	24,228	23,511	1,601	1,043	14,031	13,713	14,844
California	23,354	18,710	204,166	180,906	188,630	---	---	---	---	---
Alaska	441	401	4,763	5,088	5,055	252	395	2,509	2,747	3,051
Hawaii	1,634	1,563	18,116	17,287	16,559	540	481	4,454	4,902	4,314
Puerto Rico ⁶	---	---	---	---	---	---	---	---	---	---

--- Data not available.

¹Excludes figures for State(s) shown below as not available.

²Figures for marriages are marriage licenses issued for some counties.

³Figures include adjustments for varying lengths of reporting periods; see [Technical notes](#).

⁴Figures for marriages are marriage licenses issued.

⁵Figures for divorces include estimates for some counties.

⁶Data for Puerto Rico are not included in U.S. total figures.

NOTES: Figures include all revisions received from the States. Cumulative figures for the current year reflect revisions received for previous months, and figures for earlier years may differ from those previously published.

Table 4. Provisional number of deaths under 1 year and infant mortality rates: Each division and State, 12 months ending with November 1995 and 1996

[Data are estimates by State of residence. Figures should be interpreted with caution because of conversion of place of occurrence to place of residence; see [Technical notes](#). Infant mortality rates are deaths under 1 year per 1,000 live births in specified area]

Area	12 months ending with November			
	1996		1995	
	Number	Rate	Number	Rate
New England	953	5.2	941	5.4
Maine	61	4.5	78	5.5
New Hampshire	76	5.3	69	4.7
Vermont	54	8.0	41	6.0
Massachusetts	412	4.5	408	5.3
Rhode Island	69	5.5	87	6.8
Connecticut	281	6.5	258	5.5
Middle Atlantic	3,717	7.1	3,990	7.4
New York	1,751	6.5	2,076	7.7
New Jersey	841	8.0	779	6.5
Pennsylvania	1,125	7.6	1,135	7.4
East North Central	4,910	8.0	5,355	8.6
Ohio	1,196	7.8	1,312	8.4
Indiana	607	8.3	760	9.2
Illinois	1,528	8.3	1,639	8.8
Michigan	1,074	7.8	1,139	8.6
Wisconsin	505	7.6	505	7.5
West North Central	1,871	7.3	1,851	7.3
Minnesota	420	6.6	394	6.2
Iowa	229	5.8	248	7.2
Missouri	579	7.9	589	7.9
North Dakota	35	4.1	49	5.6
South Dakota	52	5.3	108	10.0
Nebraska	204	8.8	179	7.6
Kansas	352	9.6	284	7.5
South Atlantic	5,472	8.3	5,637	8.6
Delaware	68	6.8	73	7.3
Maryland	595	8.1	661	9.1
District of Columbia	115	13.9	163	18.3
Virginia	657	7.6	696	7.4
West Virginia	161	8.0	150	7.1
North Carolina	952	8.9	987	9.7
South Carolina	405	8.0	431	8.6
Georgia	1,059	9.4	1,089	9.7
Florida	1,460	7.6	1,387	7.5
East South Central	2,016	8.9	2,186	9.6
Kentucky	400	7.6	407	7.9
Tennessee	590	8.3	745	9.9
Alabama	627	10.2	623	10.1
Mississippi	399	9.9	411	10.5
West South Central	3,382	7.1	3,514	7.3
Arkansas	302	8.5	283	8.3
Louisiana	549	8.2	635	9.5
Oklahoma	402	9.0	409	8.7
Texas ¹	2,129	6.4	2,187	6.6
Mountain	² 1,168	² 6.6	1,631	6.7
Montana	86	7.9	79	7.0
Idaho	136	7.2	110	6.2
Wyoming	40	6.5	57	9.2
Colorado	360	7.6	349	6.9
New Mexico	161	5.9	198	7.3
Arizona	---	---	513	7.3
Utah	234	5.7	206	5.3
Nevada	151	6.3	119	5.6
Pacific	4,217	5.9	4,337	6.1
Washington	441	5.5	399	5.1
Oregon	235	5.4	266	6.1
California ¹	3,359	6.0	3,485	6.2
Alaska	78	7.9	70	6.8
Hawaii	104	5.6	117	6.3
Puerto Rico ³	---	---	---	---

--- Data not available.

¹Figures include adjustments for varying lengths of reporting periods; see [Technical notes](#).

²Excludes figures for States shown below as not available.

³Data for Puerto Rico are not included in U.S. total figures.

NOTES: Figures include all revisions received from the States. Figures for the current year reflect revisions received for previous months, and figures for earlier years may differ from those previously published.

Table 5. Provisional number of deaths and death rates, by age, race, and sex, and age-adjusted death rates by race and sex: United States, October 1995 and 1996, cumulative figures 1995 and 1996, and 12 months ending with October 1995 and 1996

[Data are provisional, estimated from a 10-percent sample of deaths. Age-specific rates on an annual basis per 100,000 population in specified group; age-adjusted rates per 100,000 U.S. standard population; see [Technical notes](#). Because of rounding of estimates, figures may not add to totals. For method of computation and information on standard errors of the estimates, see [Technical notes](#)]

Age, race, and sex	October				January–October				12 months ending with October							
	1996		1995		1996		1995		1996		1995					
	Number	Rate	Number	Rate	Number	Rate	Number	Rate	Number	Rate	Number	Rate				
All races, both sexes ¹																
All ages	186,000	826.3	190,000	848.1	1,917,000	868.5	1,924,000	880.3	2,302,000	869.3	2,296,000	875.1				
Under 1 year	} 3,430	69.7	3,630	74.0	23,600	² 736.3	24,500	² 765.9	28,400	² 735.4	29,500	² 767.4				
1–4 years					5,010	38.5	5,700	43.4	6,050	38.8	6,810	43.1				
5–14 years					7,430	23.1	6,650	20.9	9,010	23.4	7,940	20.9				
15–24 years					3,030	99.4	3,190	104.5	28,370	94.7	28,980	96.9	33,940	94.5	35,120	97.7
25–34 years					3,940	115.6	4,980	144.1	43,990	130.5	49,010	143.9	53,250	131.5	58,830	143.8
35–44 years	7,570	205.7	8,390	231.1	80,400	223.5	85,380	241.7	97,670	226.3	101,340	239.1				
45–54 years	12,360	446.4	12,000	448.7	118,580	441.8	120,000	465.3	141,740	441.2	142,640	461.7				
55–64 years	18,830	1,037.6	20,080	1,116.1	194,520	1,095.3	195,880	1,113.7	233,080	1,094.7	234,170	1,109.5				
65–74 years	38,750	2,453.6	38,930	2,443.5	396,880	2,547.2	401,310	2,569.6	474,520	2,537.8	477,800	2,548.4				
75–84 years	52,220	5,354.2	52,740	5,532.0	546,570	5,759.7	543,160	5,867.5	654,980	5,759.6	649,880	5,856.4				
85 years and over	45,890	14,390.4	45,770	14,712.1	470,800	15,189.6	462,660	15,364.3	566,400	15,254.5	550,520	15,258.3				
Not stated	20	...	70	...	810	...	880	...	950	...	1,040	...				
Age-adjusted rate ³	469.3	...	489.3	...	492.3	...	505.4	...	492.5	...	503.0				
All races, male ¹																
All ages	93,540	850.3	97,520	892.5	968,800	898.6	978,040	916.3	1,162,530	898.9	1,164,660	909.2				
Under 1 year	} 2,050	81.3	2,150	85.6	12,920	² 786.6	13,580	² 828.9	15,660	² 792.9	16,430	² 834.0				
1–4 years					2,850	42.9	3,280	49.1	3,420	42.9	3,910	48.4				
5–14 years					4,420	26.8	4,050	25.0	5,390	27.3	4,700	24.1				
15–24 years					2,330	149.6	2,490	159.8	21,430	140.2	22,090	144.7	25,780	140.7	26,890	146.6
25–34 years					2,840	166.9	3,660	212.0	31,200	185.4	35,720	209.8	37,870	187.2	42,920	209.9
35–44 years	5,030	275.4	5,620	312.0	54,650	306.1	59,050	337.0	66,490	310.5	70,000	333.0				
45–54 years	7,480	552.9	7,660	586.3	74,940	571.6	75,820	601.8	89,920	573.0	90,070	596.8				
55–64 years	11,750	1,360.3	11,990	1,401.9	117,200	1,386.9	117,380	1,404.6	140,280	1,384.8	140,360	1,399.7				
65–74 years	21,320	3,026.9	22,660	3,198.7	223,990	3,226.4	229,370	3,306.0	268,610	3,224.6	272,110	3,266.6				
75–84 years	25,400	6,624.3	25,950	6,996.6	268,370	7,219.8	266,520	7,428.1	321,000	7,207.0	317,430	7,383.8				
85 years and over	15,310	16,972.5	15,290	17,580.8	156,290	17,888.2	150,610	17,898.1	187,480	17,923.5	179,200	17,760.2				
Not stated	20	...	50	...	540	...	560	...	630	...	650	...				
Age-adjusted rate ³	594.5	...	633.4	...	627.0	...	649.2	...	627.9	...	644.9				
All races, female ¹																
All ages	92,530	803.4	92,250	805.7	948,150	839.8	946,050	845.7	1,137,410	839.9	1,130,920	842.3				
Under 1 year	} 1,380	57.4	1,480	61.8	10,670	² 681.6	10,900	² 697.4	12,710	² 675.0	13,060	² 695.1				
1–4 years					2,160	34.0	2,420	37.7	2,630	34.5	2,900	37.6				
5–14 years					3,010	19.2	2,590	16.9	3,620	19.2	3,240	17.5				
15–24 years					710	47.6	700	46.8	6,940	47.3	6,890	47.0	8,160	46.4	8,230	46.8
25–34 years					1,100	64.5	1,330	76.9	12,790	75.8	13,290	78.1	15,380	75.9	15,910	77.8
35–44 years	2,540	137.0	2,770	151.4	25,760	142.1	26,330	147.9	31,170	143.3	31,340	146.7				
45–54 years	4,880	344.6	4,340	317.3	43,640	317.9	44,170	334.9	51,820	315.4	52,570	332.7				
55–64 years	7,090	745.5	8,090	857.3	77,320	830.7	78,500	850.6	92,800	831.3	93,810	846.8				
65–74 years	17,430	1,992.3	16,260	1,837.7	172,880	2,001.7	171,940	1,981.0	205,910	1,986.0	205,690	1,973.8				
75–84 years	26,830	4,533.0	26,790	4,598.8	278,200	4,820.0	276,640	4,879.9	333,990	4,827.8	332,460	4,890.6				
85 years and over	30,580	13,371.9	30,490	13,608.6	314,510	14,129.4	312,050	14,379.7	378,910	14,207.3	371,330	14,276.4				
Not stated	–	...	20	...	270	...	320	...	320	...	380	...				
Age-adjusted rate ³	364.3	...	369.1	...	380.2	...	385.7	...	379.5	...	384.5				
White																
All ages	159,380	855.0	163,500	880.9	1,648,850	901.6	1,652,710	910.8	1,978,180	901.7	1,972,890	905.9				
Under 1 year	} 2,400	61.7	2,750	70.8	15,400	² 616.6	16,250	² 649.5	18,580	² 617.3	19,510	² 647.3				
1–4 years					3,380	33.0	3,930	37.9	4,090	33.3	4,610	37.0				
5–14 years					5,300	20.8	4,840	19.2	6,540	21.4	5,730	19.0				
15–24 years					2,190	90.2	2,320	95.3	20,020	83.9	20,480	85.7	24,060	84.1	24,450	85.2
25–34 years					2,750	99.3	3,430	121.6	30,980	113.0	34,600	124.2	37,220	112.9	41,760	124.8
35–44 years	5,370	175.5	6,030	199.5	57,850	193.2	60,650	206.1	70,180	195.4	72,150	204.4				
45–54 years	9,630	407.9	9,330	408.3	90,470	394.9	92,160	417.7	108,280	394.9	109,570	414.6				
55–64 years	14,990	957.7	16,220	1,044.0	157,770	1,029.5	158,780	1,044.4	189,130	1,029.3	190,170	1,042.1				
65–74 years	33,300	2,384.6	33,610	2,379.8	344,290	2,496.2	346,070	2,497.2	411,670	2,486.7	412,480	2,479.1				
75–84 years	46,800	5,292.5	47,560	5,502.4	490,740	5,703.4	488,370	5,818.0	588,050	5,703.7	584,950	5,812.9				
85 years and over	41,930	14,441.2	42,170	14,901.5	432,050	15,318.9	425,890	15,540.7	519,670	15,379.4	506,700	15,429.4				
Not stated	20	...	60	...	590	...	680	...	710	...	800	...				
Age-adjusted rate ³	443.7	...	465.3	...	466.8	...	477.8	...	466.9	...	475.6				

See footnotes at end of table.

Table 5. Provisional number of deaths and death rates, by age, race, and sex, and age-adjusted death rates by race and sex: United States, October 1995 and 1996, cumulative figures 1995 and 1996, and 12 months ending with October 1995 and 1996—Con.

[Data are provisional, estimated from a 10-percent sample of deaths. Age-specific rates on an annual basis per 100,000 population in specified group; age-adjusted rates per 100,000 U.S. standard population; see [Technical notes](#). Because of rounding of estimates, figures may not add to totals. For method of computation and information on standard errors of the estimates, see [Technical notes](#)]

Age, race, and sex	October				January–October				12 months ending with October			
	1996		1995		1996		1995		1996		1995	
	Number	Rate	Number	Rate	Number	Rate	Number	Rate	Number	Rate	Number	Rate
White male												
All ages	79,220	865.7	83,350	915.4	824,770	918.9	831,390	934.1	989,440	919.0	990,120	926.8
Under 1 year	} 1,460	73.2	1,710	85.8	8,480	² 660.7	9,180	² 714.9	10,290	² 666.0	11,010	² 712.2
1–4 years					2,050	39.0	2,410	45.3	2,450	38.9	2,830	44.2
5–14 years					3,130	24.0	2,950	22.8	3,870	24.7	3,380	21.8
15–24 years					1,660	133.2	1,760	141.0	14,810	121.1	15,410	125.7
25–34 years	1,960	140.3	2,580	181.2	22,320	161.1	25,730	183.0	26,880	161.6	31,000	183.6
35–44 years	3,660	238.4	4,010	264.6	39,820	265.2	42,570	288.5	48,430	268.8	50,580	285.8
45–54 years	5,880	504.1	6,020	533.5	57,700	510.0	58,680	538.9	69,390	512.4	69,680	534.0
55–64 years	9,370	1,243.7	9,840	1,317.2	95,570	1,296.2	96,490	1,320.5	114,580	1,296.2	115,570	1,318.1
65–74 years	18,400	2,931.7	19,760	3,123.3	195,640	3,159.4	199,420	3,216.1	234,380	3,154.5	236,960	3,182.8
75–84 years	22,850	6,546.4	23,690	7,020.6	242,140	7,156.8	240,970	7,381.9	289,750	7,149.0	287,060	7,339.8
85 years and over	13,970	17,109.6	13,940	17,744.0	142,720	18,065.9	137,110	18,056.2	171,030	18,079.3	163,040	17,916.5
Not stated	20	...	40	...	410	...	460	...	490	...	540	...
Age-adjusted rate ³	559.7	...	602.9	...	592.8	...	613.5	...	593.7	...	609.4
White female												
All ages	80,160	844.6	80,150	847.7	824,070	885.0	821,320	888.4	988,750	885.1	982,770	885.6
Under 1 year	} 940	49.7	1,040	55.0	6,930	² 566.8	7,070	² 579.0	8,290	² 565.9	8,500	² 579.0
1–4 years					1,330	26.2	1,520	30.0	1,640	27.4	1,780	29.3
5–14 years					2,170	17.5	1,900	15.4	2,670	18.0	2,350	16.0
15–24 years					520	44.0	560	47.2	5,210	44.9	5,070	43.5
25–34 years	800	58.3	860	61.6	8,670	63.8	8,860	64.3	10,330	63.3	10,760	65.0
35–44 years	1,710	112.1	2,020	134.1	18,030	120.8	18,080	123.2	21,740	121.4	21,580	122.6
45–54 years	3,750	313.9	3,310	286.2	32,770	282.7	33,480	300.0	38,890	280.2	39,900	298.1
55–64 years	5,630	693.5	6,380	791.0	62,210	782.5	62,290	788.7	74,550	781.9	74,600	786.9
65–74 years	14,900	1,938.0	13,850	1,776.4	148,650	1,955.9	146,650	1,915.3	177,290	1,942.9	175,520	1,909.3
75–84 years	23,950	4,474.8	23,870	4,530.1	248,590	4,761.4	247,390	4,822.6	298,310	4,767.6	297,890	4,842.2
85 years and over	27,960	13,397.3	28,230	13,809.1	289,330	14,250.1	288,780	14,576.5	348,650	14,330.0	343,660	14,476.0
Not stated	—	...	20	...	180	...	220	...	220	...	250	...
Age-adjusted rate ³	345.9	...	350.2	...	361.4	...	364.2	...	360.8	...	363.5
Black												
All ages	23,600	825.7	23,670	837.4	235,780	843.2	239,500	869.0	283,310	844.8	284,630	860.6
Under 1 year	} 940	121.7	820	107.0	7,370	² 1,404.2	7,420	² 1,427.8	8,900	² 1,412.7	8,990	² 1,440.7
1–4 years					1,410	68.7	1,550	74.3	1,710	69.5	1,930	77.6
5–14 years					1,670	33.3	1,510	30.4	1,930	32.2	1,830	31.1
15–24 years					760	163.4	740	159.5	7,300	159.9	7,310	161.0
25–34 years	1,040	227.3	1,390	302.5	11,630	257.9	13,100	290.3	14,390	265.7	15,430	284.4
35–44 years	1,960	433.3	2,140	482.3	20,440	463.3	22,580	524.4	24,990	472.7	26,630	515.5
45–54 years	2,430	829.7	2,390	854.5	24,770	875.9	24,710	921.5	29,590	874.7	29,390	914.7
55–64 years	3,490	1,904.1	3,520	1,940.3	32,540	1,814.1	32,660	1,847.5	38,850	1,806.1	38,780	1,828.4
65–74 years	4,830	3,487.8	4,670	3,394.2	46,120	3,395.1	48,750	3,628.3	55,050	3,381.4	57,660	3,579.1
75–84 years	4,690	6,522.0	4,640	6,558.5	48,500	6,916.5	47,640	6,921.0	58,280	6,938.1	56,460	6,843.6
85 years and over	3,480	14,416.3	3,340	14,095.3	33,820	14,420.8	32,090	14,064.4	40,800	14,571.4	38,100	13,956.0
Not stated	—	...	10	...	220	...	180	...	240	...	220	...
Age-adjusted rate ³	726.7	...	743.0	...	739.9	...	772.5	...	741.3	...	766.0
Black male												
All ages	12,570	926.7	12,750	950.9	126,140	950.8	128,390	982.2	151,910	954.6	152,780	974.1
Under 1 year	} 530	135.3	410	105.4	3,970	² 1,498.0	3,870	² 1,461.6	4,870	² 1,526.6	4,790	² 1,511.0
1–4 years					700	67.3	780	74.2	850	68.1	950	75.3
5–14 years					1,000	39.9	980	39.4	1,160	38.2	1,150	38.5
15–24 years					630	270.6	630	271.5	5,840	255.7	5,770	255.0
25–34 years	780	360.0	990	455.5	8,010	375.3	9,070	424.4	9,950	388.1	10,740	418.7
35–44 years	1,220	577.1	1,490	719.6	13,360	648.7	15,010	746.2	16,380	663.4	17,670	733.2
45–54 years	1,450	1,092.5	1,460	1,151.4	15,490	1,208.7	15,370	1,262.5	18,470	1,204.8	18,350	1,260.3
55–64 years	2,110	2,647.3	1,960	2,486.8	19,090	2,448.5	18,400	2,397.0	22,690	2,426.7	21,820	2,369.2
65–74 years	2,560	4,418.8	2,530	4,413.1	24,770	4,366.0	26,070	4,661.9	29,860	4,391.2	30,650	4,574.6
75–84 years	2,200	8,325.1	2,010	7,810.6	22,480	8,745.5	21,900	8,749.3	26,910	8,737.0	26,060	8,686.7
85 years and over	1,100	15,837.9	1,250	18,170.0	11,290	16,710.2	11,080	16,773.9	13,700	16,913.6	13,190	16,696.2
Not stated	—	...	10	...	130	...	90	...	140	...	100	...
Age-adjusted rate ³	961.9	...	981.6	...	979.8	...	1,017.8	...	983.0	...	1,010.2

See footnotes at end of table.

Table 5. Provisional number of deaths and death rates, by age, race, and sex, and age-adjusted death rates by race and sex: United States, October 1995 and 1996, cumulative figures 1995 and 1996, and 12 months ending with October 1995 and 1996—Con.

[Data are provisional, estimated from a 10-percent sample of deaths. Age-specific rates on an annual basis per 100,000 population in specified group; age-adjusted rates per 100,000 U.S. standard population; see [Technical notes](#). Because of rounding of estimates, figures may not add to totals. For method of computation and information on standard errors of the estimates, see [Technical notes](#)]

Age, race, and sex	October				January–October				12 months ending with October							
	1996		1995		1996		1995		1996		1995					
	Number	Rate	Number	Rate	Number	Rate	Number	Rate	Number	Rate	Number	Rate				
Black female																
All ages	11,030	734.4	10,920	735.0	109,630	746.0	111,110	766.8	131,400	745.6	131,860	758.4				
Under 1 year	} 400	105.1	410	108.6	3,400	² 1,307.9	3,550	² 1,389.2	4,020	² 1,292.6	4,210	² 1,371.3				
1–4 years					710	70.2	780	76.4	860	70.8	980	80.0				
5–14 years					670	27.3	530	21.9	770	26.1	680	23.5				
15–24 years					130	56.0	120	51.7	1,450	64.5	1,540	68.3	1,670	61.1	1,900	69.8
25–34 years					260	107.9	400	165.2	3,620	152.0	4,030	169.6	4,430	155.4	4,690	164.0
35–44 years	740	307.1	650	274.7	7,070	301.2	7,570	330.0	8,610	305.5	8,950	324.7				
45–54 years	980	611.9	920	601.8	9,270	599.4	9,340	636.1	11,120	601.1	11,050	628.9				
55–64 years	1,380	1,332.2	1,560	1,520.5	13,450	1,326.4	14,250	1,426.4	16,160	1,328.9	16,960	1,413.3				
65–74 years	2,270	2,818.2	2,140	2,666.3	21,350	2,697.6	22,680	2,891.6	25,180	2,656.1	27,010	2,870.4				
75–84 years	2,490	5,474.5	2,630	5,842.7	26,020	5,858.0	25,740	5,870.5	31,370	5,896.6	30,400	5,790.5				
85 years and over	2,380	13,842.0	2,090	12,428.3	22,530	13,489.7	21,010	12,965.9	27,100	13,618.1	24,910	12,840.2				
Not stated	–	...	–	...	90	...	90	...	100	...	120	...				
Age-adjusted rate ³	543.2	...	556.7	...	554.0	...	582.8	...	553.6	...	577.0				

... Category not applicable.

– Quantity zero.

¹Includes races other than white and black.

²Death rates for “Under 1 year” (based on population estimates) differ from infant mortality rates (based on live births); see [table 9](#) for infant mortality rates.

³For method of computation, see [Technical notes](#).

NOTES: Figures include all revisions received from the States. Cumulative and 12-month figures for the current year reflect revisions received for previous months, and figures for earlier years may differ from those previously published.

Table 6. Provisional number of deaths and death rates for 72 selected causes, Human immunodeficiency virus infection, and Alzheimer's disease: United States, October 1995 and 1996, cumulative figures 1995 and 1996, and 12 months ending with October 1995 and 1996

[Data are provisional, estimated from a 10-percent sample of deaths. Rates on an annual basis per 100,000 estimated population. Because of rounding of estimates, figures may not add to totals. For method of computation and information on standard errors of the estimates, see [Technical notes](#). For explanation of asterisks preceding cause-of-death categories, see [Technical notes](#)]

Cause of death (Based on the Ninth Revision, International Classification of Diseases, 1975)	October		January–October				12 months ending with October					
	1996		1995		1996		1995		1996		1995	
	Number	Rate	Number	Rate	Number	Rate	Number	Rate	Number	Rate	Number	Rate
All causes	186,000	826.3	190,000	848.1	1,917,000	868.5	1,924,000	880.3	2,302,000	869.3	2,296,000	875.1
Shigellosis and amebiasis	—	*	—	*	—	*	—	*	—	*	—	*
Certain other intestinal infections	40	*	60	*	710	0.3	560	0.2	790	0.3	660	0.3
Tuberculosis	100	*	80	*	790	0.4	1,120	0.5	1,040	0.4	1,330	0.5
Tuberculosis of respiratory system	70	*	80	*	630	0.3	870	0.4	830	0.3	1,030	0.4
Other tuberculosis	30	*	—	*	170	0.1	250	0.1	220	0.1	300	0.1
Whooping cough	—	*	10	*	10	*	10	*	10	*	10	*
Streptococcal sore throat, scarlatina, and erysipelas	—	*	—	*	—	*	10	*	—	*	10	*
Meningococcal infection	10	*	—	*	230	0.1	280	0.1	250	0.1	340	0.1
Septicemia	1,690	7.5	1,790	8.0	17,790	8.1	17,830	8.2	21,160	8.0	20,950	8.0
Acute poliomyelitis	—	*	—	*	—	*	—	*	—	*	—	*
Measles	—	*	—	*	—	*	—	*	—	*	—	*
Viral hepatitis	360	1.6	290	1.3	3,120	1.4	2,900	1.3	3,740	1.4	3,430	1.3
Syphilis	—	*	10	*	30	*	130	0.1	30	*	140	0.1
All other infectious and parasitic diseases ¹	2,590	11.5	4,010	17.9	32,280	14.6	41,350	18.9	39,930	15.1	49,280	18.8
Malignant neoplasms, including neoplasms of lymphatic and hematopoietic tissues	44,630	198.2	45,760	204.5	450,460	204.1	448,730	205.2	538,180	203.3	537,000	204.7
Malignant neoplasms of lip, oral cavity, and pharynx	600	2.7	580	2.6	6,510	2.9	6,640	3.0	7,840	3.0	7,910	3.0
Malignant neoplasms of digestive organs and peritoneum	11,000	48.8	10,870	48.6	105,140	47.6	104,720	47.9	125,680	47.5	125,770	47.9
Malignant neoplasms of respiratory and intrathoracic organs	13,000	57.7	13,140	58.7	131,760	59.7	129,360	59.2	157,340	59.4	154,580	58.9
Malignant neoplasm of breast	3,670	16.3	3,830	17.1	36,800	16.7	36,850	16.9	43,960	16.6	44,180	16.8
Malignant neoplasms of genital organs	4,640	20.6	5,240	23.4	49,610	22.5	51,020	23.3	59,390	22.4	60,950	23.2
Malignant neoplasms of urinary organs	1,870	8.3	1,820	8.1	19,010	8.6	19,360	8.9	22,740	8.6	22,790	8.7
Malignant neoplasms of all other and unspecified sites	5,450	24.2	5,570	24.9	55,120	25.0	55,130	25.2	65,580	24.8	66,200	25.2
Leukemia	1,610	7.1	1,470	6.6	17,160	7.8	16,420	7.5	20,360	7.7	19,420	7.4
Other malignant neoplasms of lymphatic and hematopoietic tissues	2,790	12.4	3,240	14.5	29,340	13.3	29,230	13.4	35,270	13.3	35,210	13.4
Benign neoplasms, carcinoma in situ, and neoplasms of uncertain behavior and of unspecified nature	500	2.2	690	3.1	6,380	2.9	7,120	3.2	7,650	2.9	8,320	3.2
Diabetes mellitus	4,960	22.0	4,880	21.8	50,450	22.8	48,980	22.4	59,800	22.6	58,230	22.2
Nutritional deficiencies	340	1.5	330	1.5	3,280	1.5	3,090	1.4	4,010	1.5	3,610	1.4
Anemias	310	1.4	330	1.5	3,240	1.5	3,430	1.6	4,100	1.5	4,140	1.6
Meningitis	40	*	30	*	490	0.2	680	0.3	600	0.2	870	0.3
Major cardiovascular diseases	76,030	337.7	76,100	340.1	781,010	353.9	784,090	358.7	939,430	354.8	935,230	356.5
Diseases of heart	58,440	259.5	59,040	263.8	605,360	274.3	608,560	278.4	727,660	274.8	725,520	276.5
Rheumatic fever and rheumatic heart disease	370	1.6	300	1.3	4,120	1.9	4,290	2.0	4,860	1.8	5,060	1.9
Hypertensive heart disease	2,030	9.0	1,960	8.7	21,920	9.9	20,420	9.3	25,990	9.8	24,090	9.2
Hypertensive heart and renal disease	150	0.7	180	0.8	1,800	0.8	1,900	0.9	2,240	0.8	2,370	0.9
Ischemic heart disease	37,900	168.3	38,180	170.6	392,160	177.7	397,340	181.8	472,230	178.4	473,610	180.5
Acute myocardial infarction	17,260	76.6	17,470	78.1	177,690	80.5	181,260	82.9	213,630	80.7	217,270	82.8
Other acute and subacute forms of ischemic heart disease	260	1.1	180	0.8	2,190	1.0	2,100	1.0	2,680	1.0	2,590	1.0
Angina pectoris	60	*	50	*	600	0.3	590	0.3	740	0.3	720	0.3
Old myocardial infarction and other forms of chronic ischemic heart disease	20,310	90.2	20,480	91.5	211,680	95.9	213,390	97.6	255,190	96.4	253,030	96.4
Other diseases of endocardium	1,220	5.4	1,390	6.2	13,450	6.1	12,940	5.9	16,040	6.1	15,440	5.9
All other forms of heart disease	16,780	74.5	17,030	76.1	171,900	77.9	171,670	78.5	206,300	77.9	204,960	78.1
Hypertension with or without renal disease	1,220	5.4	1,040	4.6	10,150	4.6	10,480	4.8	12,140	4.6	12,260	4.7
Cerebrovascular diseases	12,670	56.3	12,560	56.1	130,660	59.2	130,070	59.5	157,350	59.4	155,460	59.3
Intracerebral and other intracranial hemorrhage	1,740	7.7	1,490	6.7	19,030	8.6	17,760	8.1	22,960	8.7	21,390	8.2
Cerebral thrombosis and unspecified occlusion of cerebral arteries	1,080	4.8	1,130	5.0	10,100	4.6	11,190	5.1	12,310	4.6	13,560	5.2
Cerebral embolism	110	0.5	110	0.5	560	0.2	550	0.2	650	0.2	670	0.3
All other and late effects of cerebrovascular diseases	9,740	43.2	9,830	43.9	100,980	45.7	100,570	46.0	121,420	45.9	119,830	45.7

See footnotes at end of table.

Table 6. Provisional number of deaths and death rates for 72 selected causes, Human immunodeficiency virus infection, and Alzheimer's disease: United States, October 1995 and 1996, cumulative figures 1995 and 1996, and 12 months ending with October 1995 and 1996—Con.

[Data are provisional, estimated from a 10-percent sample of deaths. Rates on an annual basis per 100,000 estimated population. Because of rounding of estimates, figures may not add to totals. For method of computation and information on standard errors of the estimates, see [Technical notes](#). For explanation of asterisks preceding cause-of-death categories, see [Technical notes](#)]

Cause of death (Based on the Ninth Revision, International Classification of Diseases, 1975)	October		January–October				12 months ending with October						
	1996	1995	1996	1995	1996	1995	1996	1995	1996	1995			
	Number	Rate	Number	Rate	Number	Rate	Number	Rate	Number	Rate	Number	Rate	
Cerebrovascular diseases—Con.													
Atherosclerosis	440	1,510	6.7	1,090	4.9	12,960	5.9	13,360	6.1	16,000	6.0	16,150	6.2
Other diseases of arteries, arterioles, and capillaries441–448	2,180	9.7	2,360	10.5	21,890	9.9	21,620	9.9	26,280	9.9	25,840	9.8
Acute bronchitis and bronchiolitis466	—	*	10	*	340	0.1	460	0.2	420	0.2	500	0.2
Pneumonia and influenza480–487	6,150	27.3	5,750	25.7	66,990	30.4	66,410	30.4	80,750	30.5	78,810	30.0
Pneumonia480–486	6,140	27.3	5,740	25.6	66,530	30.1	65,990	30.2	80,230	30.3	78,390	29.9
Influenza487	10	*	10	*	460	0.2	420	0.2	520	0.2	420	0.2
Chronic obstructive pulmonary diseases and allied conditions490–496	7,440	33.0	7,960	35.6	87,820	39.8	87,650	40.1	103,720	39.2	103,000	39.3
Bronchitis, chronic and unspecified490–491	190	0.8	230	1.0	2,540	1.2	2,520	1.1	3,000	1.1	3,060	1.2
Emphysema492	970	4.3	1,420	6.3	13,820	6.3	14,900	6.8	16,340	6.2	17,590	6.7
Asthma493	400	1.8	350	1.6	4,260	1.9	4,590	2.1	5,190	2.0	5,300	2.0
Other chronic obstructive pulmonary diseases and allied conditions494–496	5,880	26.1	5,960	26.6	67,190	30.4	65,640	30.0	79,190	29.9	77,050	29.4
Ulcer of stomach and duodenum531–533	400	1.8	570	2.5	4,110	1.9	5,050	2.3	4,950	1.9	5,880	2.2
Appendicitis540–543	30	*	30	*	380	0.2	360	0.2	420	0.2	410	0.2
Hernia of abdominal cavity and intestinal obstruction without mention of hernia550–553,560	590	2.6	350	1.6	5,350	2.4	5,050	2.3	6,260	2.4	6,100	2.3
Chronic liver disease and cirrhosis571	2,060	9.1	2,060	9.2	20,140	9.1	21,160	9.7	24,070	9.1	25,790	9.8
Cholelithiasis and other disorders of gallbladder574–575	210	0.9	210	0.9	2,240	1.0	2,210	1.0	2,730	1.0	2,610	1.0
Nephritis and nephrotic syndrome, and nephrosis580–589	2,150	9.5	1,990	8.9	21,960	9.9	21,320	9.7	26,270	9.9	25,850	9.9
Acute glomerulonephritis and nephrotic syndrome580–581	30	*	10	*	170	0.1	230	0.1	220	0.1	240	0.1
Chronic glomerulonephritis, nephritis and nephropathy, not specified as acute or chronic, and renal sclerosis, unspecified582–583,587	150	0.7	130	0.6	1,450	0.7	1,030	0.5	1,760	0.7	1,370	0.5
Renal failure, disorders resulting from impaired renal function, and small kidney of unknown cause584–586,588–589	1,970	8.7	1,850	8.3	20,340	9.2	20,060	9.2	24,290	9.2	24,230	9.2
Infections of kidney590	50	*	40	*	750	0.3	660	0.3	820	0.3	790	0.3
Hyperplasia of prostate600	10	*	50	*	350	0.2	380	0.2	400	0.2	460	0.2
Complications of pregnancy, childbirth, and the puerperium630–676	10	*	20	*	230	0.1	250	0.1	300	0.1	280	0.1
Pregnancy with abortive outcome630–638	—	*	—	*	20	*	10	*	30	*	10	*
Other complications of pregnancy, childbirth, and the puerperium640–676	10	*	20	*	210	0.1	240	0.1	270	0.1	270	0.1
Congenital anomalies740–759	1,150	5.1	1,120	5.0	9,870	4.5	9,520	4.3	11,910	4.5	11,560	4.4
Certain conditions originating in the perinatal period760–779	1,040	4.6	1,110	5.0	10,720	4.9	11,340	5.2	12,790	4.8	13,620	5.2
Birth trauma, intrauterine hypoxia, birth asphyxia, and respiratory distress syndrome767–769	210	0.9	190	0.8	1,710	0.8	1,670	0.8	2,030	0.8	2,040	0.8
Other conditions originating in the perinatal period760–766,770–779	830	3.7	920	4.1	9,010	4.1	9,670	4.4	10,760	4.1	11,590	4.4
Symptoms, signs, and ill-defined conditions780–799	3,260	14.5	3,520	15.7	34,570	15.7	34,710	15.9	42,090	15.9	40,860	15.6
All other diseasesResidual	17,750	78.8	17,540	78.4	180,650	81.8	176,340	80.7	217,760	82.2	210,430	80.2
Accidents and adverse effects	.E800–E949	7,610	33.8	8,330	37.2	75,350	34.1	74,980	34.3	90,160	34.1	89,520	34.1
Motor vehicle accidentsE810–E825	3,980	17.7	4,560	20.4	36,060	16.3	36,530	16.7	43,310	16.4	43,630	16.6
All other accidents and adverse effectsE800–E807,E826–E949	3,630	16.1	3,770	16.8	39,290	17.8	38,460	17.6	46,850	17.7	45,890	17.5
SuicideE950–E959	2,460	10.9	2,500	11.2	25,300	11.5	25,340	11.6	29,790	11.3	30,630	11.7
Homicide and legal interventionE960–E978	1,890	8.4	1,990	8.9	17,570	8.0	18,610	8.5	21,340	8.1	22,410	8.5
All other external causesE980–E999	190	0.8	250	1.1	2,010	0.9	2,000	0.9	2,290	0.9	2,530	1.0
Human immunodeficiency virus infection ²	*042–*044	2,080	9.2	3,490	15.6	26,990	12.2	35,730	16.3	33,620	12.7	42,700	16.3
Alzheimer's disease331.0	1,650	7.3	1,770	7.9	17,920	8.1	16,770	7.7	21,630	8.2	20,330	7.7

— Quantity zero. * Figure does not meet standards of reliability or precision; see [Technical notes](#).
¹Includes data for deaths due to Human immunodeficiency virus infection (categories *042–*044) shown separately below; see [Technical notes](#).
²Included in All other infectious and parasitic diseases shown above.

NOTES: Figures include all revisions received from the States. Cumulative and 12-month figures for the current year reflect revisions received for previous months, and figures for earlier years may differ from those previously published.

Table 7. Provisional number of deaths and death rates for 16 selected subcategories of Malignant neoplasms, including neoplasms of lymphatic and hematopoietic tissues: United States, October 1995 and 1996, cumulative figures 1995 and 1996, and 12 months ending with October 1995 and 1996

[Data are provisional, estimated from a 10-percent sample of deaths. Rates on an annual basis per 100,000 estimated population. Because of rounding of estimates, figures may not add to totals. For method of computation and information on standard errors of the estimates, see [Technical notes](#)]

Cause of death (Based on the Ninth Revision, International Classification of Diseases, 1975)	October				January–October				12 months ending with October			
	1996		1995		1996		1995		1996		1995	
	Number	Rate	Number	Rate	Number	Rate	Number	Rate	Number	Rate	Number	Rate
Malignant neoplasms, including neoplasms of lymphatic and hematopoietic tissues ¹140–208	44,630	198.2	45,760	204.5	450,460	204.1	448,730	205.2	538,180	203.3	537,000	204.7
Malignant neoplasm of esophagus150	1,110	4.9	860	3.8	9,340	4.2	8,800	4.0	10,900	4.1	10,430	4.0
Malignant neoplasm of stomach151	1,240	5.5	1,060	4.7	10,990	5.0	11,630	5.3	13,180	5.0	13,990	5.3
Malignant neoplasms of colon, rectum, rectosigmoid junction, and anus153,154	5,030	22.3	4,860	21.7	47,580	21.6	46,730	21.4	56,680	21.4	56,650	21.6
Malignant neoplasm of pancreas157	2,240	9.9	2,570	11.5	22,760	10.3	22,990	10.5	27,150	10.3	27,440	10.5
Malignant neoplasms of trachea, bronchus, and lung162	12,570	55.8	12,720	56.8	127,420	57.7	124,980	57.2	152,090	57.4	149,260	56.9
Malignant melanoma of skin172	590	2.6	580	2.6	5,910	2.7	6,010	2.7	6,920	2.6	7,040	2.7
Malignant neoplasm of cervix uteri180	380	1.7	420	1.9	3,680	1.7	3,910	1.8	4,540	1.7	4,680	1.8
Malignant neoplasms of body of uterus and of uterus, part unspecified179,182	450	2.0	550	2.4	4,830	2.2	5,010	2.3	5,930	2.2	5,940	2.3
Malignant neoplasm of ovary183.0	1,120	5.0	1,340	6.0	11,290	5.1	11,410	5.2	13,460	5.1	13,590	5.2
Malignant neoplasm of prostate185	2,520	11.2	2,790	12.5	28,190	12.8	29,270	13.4	33,470	12.6	35,030	13.4
Malignant neoplasm of bladder188	830	3.7	910	4.1	9,250	4.2	9,640	4.4	11,150	4.2	11,180	4.3
Malignant neoplasms of kidney and other and unspecified urinary organs189	1,040	4.6	910	4.1	9,760	4.4	9,720	4.4	11,600	4.4	11,610	4.4
Malignant neoplasms of brain and other and unspecified parts of nervous system191,192	980	4.3	1,020	4.6	9,620	4.4	9,590	4.4	11,560	4.4	11,700	4.5
Hodgkin's disease201	80	*	130	0.6	1,210	0.5	1,300	0.6	1,440	0.5	1,540	0.6
Malignant lymphoma other than Hodgkin's disease200,202	1,800	8.0	2,180	9.7	19,320	8.7	19,270	8.8	23,320	8.8	23,120	8.8
Multiple myeloma and other immunoproliferative neoplasms203	910	4.0	930	4.1	8,810	4.0	8,670	4.0	10,500	4.0	10,550	4.0

* Figure does not meet standards of reliability or precision; see [Technical notes](#).

¹Includes figures for subcategories not shown below.

NOTES: Figures include all revisions received from the States. Cumulative and 12-month figures for the current year reflect revisions received for previous months, and figures for earlier years may differ from those previously published.

Table 8. Provisional number of deaths and death rates for firearm mortality: United States, October 1995 and 1996, cumulative figures 1995 and 1996, and 12 months ending with October 1995 and 1996

[Data are provisional, estimated from a 10-percent sample of deaths. Rates on an annual basis per 100,000 estimated population. Because of rounding of estimates, figures may not add to totals. For method of computation and information on standard errors of the estimates, see [Technical notes](#)]

Cause of death (Based on the Ninth Revision, International Classification of Diseases, 1975)	October				January–October				12 months ending with October			
	1996		1995		1996		1995		1996		1995	
	Number	Rate	Number	Rate	Number	Rate	Number	Rate	Number	Rate	Number	Rate
Injury by firearms.E922,E955.0–E955.4,E965.0–965.4,E970,E985.0–E985.4	2,920	13.0	3,080	13.8	28,890	13.1	29,480	13.5	34,970	13.2	35,980	13.7
Accident caused by firearm missileE922	110	0.5	160	0.7	1,030	0.5	1,030	0.5	1,370	0.5	1,420	0.5
Suicide by firearmsE955.0–E955.4	1,430	6.3	1,460	6.5	15,340	6.9	15,180	6.9	18,140	6.9	18,440	7.0
Homicide and legal intervention by firearms.E965.0–E965.4,E970	1,360	6.0	1,420	6.3	12,330	5.6	13,050	6.0	15,230	5.8	15,830	6.0
Injury by firearms, undetermined whether accidentally or purposely inflicted.E985.0–E985.4	20	*	40	*	200	0.1	220	0.1	230	0.1	290	0.1

* Figure does not meet standards of reliability or precision; see [Technical notes](#).

NOTES: Figures include all revisions received from the States. Cumulative and 12-month figures for the current year reflect revisions received for previous months, and figures for earlier years may differ from those previously published.

Table 9. Provisional number of deaths under 1 year and infant mortality rates, by age and for 10 selected causes: United States, October 1995 and 1996, cumulative figures 1995 and 1996, and 12 months ending with October 1995 and 1996

[Data are provisional, estimated from a 10-percent sample of deaths. Rates on an annual basis per 100,000 live births. Because of rounding of estimates, figures may not add to totals. For method of computation and information on standard errors of the estimates, see [Technical notes](#)]

Age and cause of death (Based on the Ninth Revision, International Classification of Diseases, 1975)	October		January–October				12 months ending with October					
	1996		1995		1996		1995		1996		1995	
	Number	Rate	Number	Rate	Number	Rate	Number	Rate	Number	Rate	Number	Rate
Total, under 1 year	2,500	713.4	2,500	742.6	23,600	723.9	24,500	749.5	28,400	728.2	29,500	757.5
Under 28 days	1,590	462.1	1,660	497.8	15,680	481.1	15,710	480.0	18,640	478.4	18,860	483.6
28 days–11 months	870	252.8	820	245.9	7,910	242.7	8,770	268.0	9,730	249.7	10,630	272.5
Certain gastrointestinal diseases.008–009,535,555–558	10	*	–	*	200	6.1	160	4.9	230	5.9	190	4.9
Pneumonia and influenza.480–487	10	*	30	*	250	7.7	280	8.6	320	8.2	350	9.0
Congenital anomalies740–759	710	206.3	640	191.9	5,600	171.8	5,220	159.5	6,550	168.1	6,390	163.8
Disorders relating to short gestation and unspecified low birthweight765	200	58.1	250	75.0	3,070	94.2	3,140	95.9	3,490	89.6	3,730	95.6
Birth trauma767	10	*	40	12.0	150	4.6	140	4.3	200	5.1	160	4.1
Intrauterine hypoxia and birth asphyxia768	60	*	20	*	450	13.8	390	11.9	530	13.6	510	13.1
Respiratory distress syndrome.769	140	40.7	120	36.0	1,080	33.1	1,060	32.4	1,240	31.8	1,290	33.1
Other conditions originating in the perinatal period.760–764,766,770–779	600	174.4	660	197.9	5,860	179.8	6,410	195.8	7,190	184.5	7,690	197.2
Sudden infant death syndrome798.0	210	61.0	180	54.0	2,190	67.2	2,370	72.4	2,740	70.3	2,910	74.6
All other causesResidual	490	142.4	540	161.9	4,740	145.4	5,290	161.6	5,880	150.9	6,280	161.0

* Figure does not meet standards of reliability or precision; see [Technical notes](#).

– Quantity zero.

NOTES: Figures include all revisions received from the States. Cumulative and 12-month figures for the current year reflect revisions received for previous months, and figures for earlier years may differ from those previously published.

Technical notes

Nature and sources of data

Data in this report are provisional unless otherwise specified and include only events occurring within the United States (50 States and the District of Columbia). Mortality data exclude fetal deaths. Data for the Commonwealth of Puerto Rico are not included in the U.S. totals.

Birth, death, and infant death figures in [tables 2](#) and [4](#) for each State are estimates by State of residence. These estimates are derived by applying adjustment ratios to the actual counts of certificates for all events occurring in the State and received in registration offices during a 1-month period regardless of date of the event. The adjustment ratios for each data year represent the observed relationship between final State occurrence and residence figures for the three most recent years for which final data were available and are expressed as a single ratio for each State. As in previous years, monthly State marriage and divorce figures represent the actual count of all events occurring in the State (State of occurrence) that were received in the registration offices during the 1-month period. Delay in the receipt of certificates in a registration office may result in a low State figure for a given month followed by a high figure for the month(s) in which the delayed records are received. Data for previous months and cumulative data include revised figures received from the States.

Figures for births, deaths, and infant deaths for California in [tables 2](#) and [4](#) contain adjustments for varying lengths of State reporting periods. Figures for Texas for all events shown in [tables 2–4](#) also are adjusted for varying lengths of State reporting periods. The figures for both States are adjusted by the ratio between the number of days in the data month and the number of days in the State reporting period. The adjusted figures are included in the U.S. totals shown elsewhere in this report.

U.S. totals for births, deaths, and infant deaths are based on the State estimates by State of residence and, therefore, in effect, exclude events to nonresidents of the United States. Events to nonresidents of the United States are included in all

marriage and divorce figures. The effect of excluding events to nonresidents from the U.S. totals is small.

Provisional totals for the United States include estimates for State data shown as not available. Provisional totals for births and marriages for the entire United States include adjustments for observed differences between provisional and final monthly figures.

Divorce figures include reported annulments. The monthly national divorce estimate is obtained by multiplying the total for the reporting areas by the ratio observed between the most recent final annual divorce total for the United States and the provisional total for the reporting areas combined.

Random variation—Although the counts in this report are not subject to sampling variability (except the Current Mortality Sample), they may be affected by random variation. When the number of events is small and the probability of such an event is small, considerable caution must be observed in interpreting the data. Such infrequent events may be assumed to follow a Poisson probability distribution. For this distribution a simple approximation may be used to estimate the random variation as follows:

If N is the number of events in the population and R is the corresponding rate, the chances are 19 in 20 that

$$1. N - 2\sqrt{N} \text{ and } N + 2\sqrt{N}$$

covers the “true” number of events.

$$2. R - 2 \frac{R}{\sqrt{N}} \text{ and } R + 2 \frac{R}{\sqrt{N}}$$

covers the “true” rate.

If the rate R_1 corresponding to N_1 events is compared with the rate R_2 corresponding to N_2 events, the difference between the two rates may be regarded as statistically significant at the 0.05 level if it exceeds

$$2 \sqrt{\frac{R_1^2}{N_1} + \frac{R_2^2}{N_2}}$$

Additional information on random variation in numbers of events, rates, and ratios may be found in the technical appendixes of *Vital Statistics of the United States, 1990, Volumes I and II*.

Rates

Rates are on an annual basis and, except for infant mortality rates, are per 1,000 or 100,000 estimated population residing in the United States. The populations used for computing these rates are furnished by the U.S. Bureau of the Census. Rates shown in this report beginning with 1992 were computed using populations based on the 1990 Census enumeration comparable to those used for final data. Monthly rates are based on populations estimated for the specific month. Year-to-date rates are averages of monthly rates that have been weighted by the number of days in the corresponding months. Rates for 12-month periods are the sum of events for the period per population estimated at the midpoint of the period.

Infant mortality rates are deaths under 1 year of age for the specified period (monthly, year-to-date, or 12-month period) per 1,000 or 100,000 live births. Births used for computing monthly and year-to-date infant mortality rates are adjusted for monthly variation in the number of births. Births used to compute 12-month rates do not contain this adjustment. Births used for computing infant mortality rates are not corrected for observed differences between provisional and final monthly figures as described earlier in “Nature and sources of data.” Because monthly infant mortality rates are based on relatively few events, they are highly variable. Therefore, comparisons of monthly infant mortality rates should be interpreted cautiously; see “[Random variation](#).”

Age-adjusted death rates are used to compare relative mortality risks across groups and over time. However, they should be viewed as constructs or indexes rather than as direct or actual measures of mortality risk. Statistically, they are weighted averages of the age-specific death rates, where the weights represent the fixed population proportions by age. See chapter 5 of an earlier report (1). The age-adjusted death rates presented in this report were computed by the direct method, that is, by applying age-specific death rates to the U.S. standard million population (2). See also chapter 10 of an earlier report (1). Age groups in [table 5](#) were used to compute the age-adjusted

rates shown in that table. It is important not to compare age-adjusted rates with crude rates.

Current Mortality Sample

The Current Mortality Sample (CMS) is a 10-percent systematic sample of death certificates drawn each month after the certificates are counted in the State registration offices. Deaths and death rates for the United States by age, race, sex, and cause are estimated based on the sample. Because of the additional time required to select and process the certificates, data based on the CMS are published 1 month after publication of the U.S. and State counts. Complete information concerning the underlying cause of death sometimes is not available when the sample is drawn. As a result estimates based on sample counts for certain causes are biased. Correction for bias is not made in this report.

Estimated numbers of deaths based on the sample were proportionately adjusted to be consistent with estimates based on the count of death certificates received in State registration offices.

HIV infection—Beginning with data for 1987, the National Center for Health Statistics introduced categories *042–*044 for classifying and coding Human immunodeficiency virus (HIV) infection. The asterisks before the categories indicate that these codes are not part of the

Ninth Revision, International Classification of Diseases. Deaths classified to these categories are included in All other infectious and parasitic diseases in the List of 72 Selected Causes of Death and are also shown separately at the bottom of table 6.

Sampling variability—Because the estimates of deaths and death rates presented in this report with the exception of total deaths and deaths under 1 year are based on a sample of death certificates, they are subject to sampling variability. The estimated relative standard error in the following table is a measure of the

Relative standard errors for estimated numbers of deaths from the Current Mortality Sample expressed as a percent of the estimate

Estimated number of deaths	Relative standard error of estimate (as percent)	
	170,000 estimated deaths each month	2,000,000 estimated deaths each year
10	94.9	94.9
20	67.1	67.1
50	42.4	42.4
100	30.0	30.0
200	21.2	21.2
500	13.4	13.4
1,000	9.5	9.5
2,000	6.7	6.7
5,000	4.2	4.2
10,000	2.9	3.0
20,000	2.0	2.1
50,000	1.1	1.3
100,000	0.6	0.9
200,000	0.6
500,000	0.4
1,000,000	0.2

sampling error of the estimated number of deaths (or of the estimated death rate) expressed as a percent of the estimate. The first column refers to monthly estimates; the second to annual; cumulative year-to-date totals fall between the two.

The chances are about 2 in 3 that the percent difference between an estimate and the result of a complete count is less than the percent shown. The chances are about 19 in 20 that the percent difference is less than twice the percent shown. A figure based on 100 or fewer estimated deaths has a relative standard error of 30 percent or more and is, therefore, considered unreliable. A rate based on 100 or fewer estimated deaths has been replaced by an asterisk.

Unless otherwise specified comparisons made in the text between death rates based on the CMS were statistically significant at the 0.05 level of significance. Lack of comment in the text about any two rates does not mean that the difference was tested and found not to be significant at this level.

References

1. Feinleib M, Zarate AO, eds. Reconsidering age adjustment procedures: Workshop proceedings. National Center for Health Statistics. Vital Health Stat 4(29). 1992.
2. Grove RD, Hetzel AM. Vital statistics rates in the United States, 1940–1960. Public Health Service. Washington: National Center for Health Statistics. 1968.

Suggested citation

National Center for Health Statistics. Births, marriages, divorces, and deaths for November 1996. Monthly vital statistics report; vol 45 no 11. Hyattsville, Maryland: National Center for Health Statistics. 1997.

Copyright information

All material appearing in this report is in the public domain and may be reproduced or copied without permission; citation as to source, however, is appreciated.

National Center for Health Statistics

Director
Edward J. Sondik, Ph.D.

Deputy Director
Jack R. Anderson

Division of Vital Statistics

Director
Mary Anne Freedman

**DEPARTMENT OF
HEALTH & HUMAN SERVICES**

Centers for Disease Control and Prevention
National Center for Health Statistics
6525 Belcrest Road
Hyattsville, Maryland 20782

FIRST CLASS MAIL
POSTAGE & FEES PAID
PHS/NCHS
PERMIT NO. G-281

OFFICIAL BUSINESS
PENALTY FOR PRIVATE USE, \$300

To receive this publication regularly, contact the National Center for Health Statistics by calling 301-436-8500
E-mail: nchsquery@nch10a.em.cdc.gov
Internet: <http://www.cdc.gov/nchswww/nchshome.htm>

DHHS Publication No. (PHS) 97-1120
7-0452 (5/97)