

Oklahoma, 2006

Primary and secondary syphilis

- **CASES:** Oklahoma reported 70 cases in 2006.
- **RATES:** Oklahoma ranked 24 among 50 states, DC, and 3 territories with 2 cases per 100,000 population compared to the total rate of 3.3 cases per 100,000 population.

Rates of primary and secondary syphilis, by sex

- In Oklahoma, the rate among males was 2.9 per 100,000 population compared to the total male rate of 5.7 per 100,000.
- The rate among females was 1.1 per 100,000 compared to the total female rate of 1.0 per 100,000.

Rates of primary and secondary syphilis, by race/ethnicity

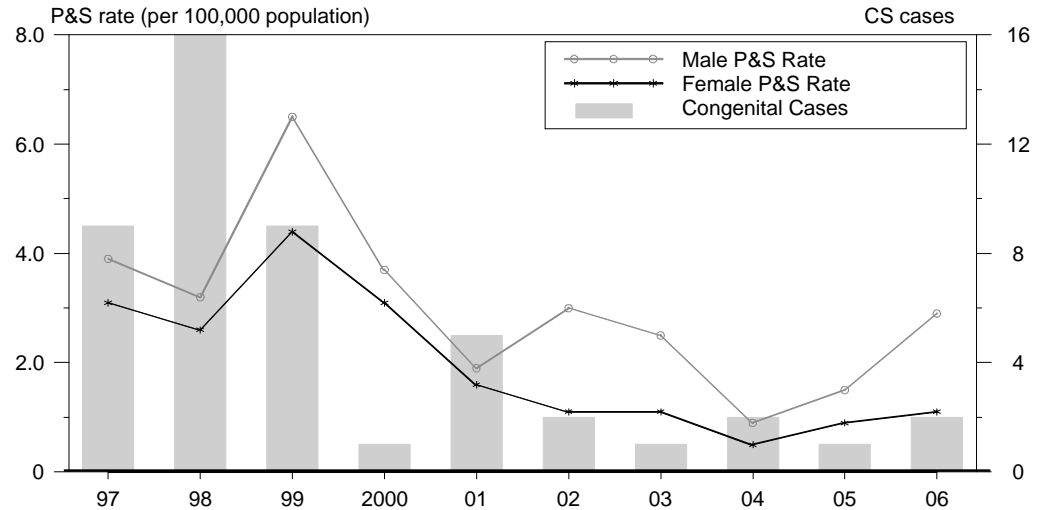
In Oklahoma, the race/ethnicity adjusted rates per 100,000 population were 1.0 among whites, 10.8 among blacks, 2.6 among Hispanics, 0.0 among Asian/Pacific Islanders, and 1.9 among American Indians/Alaska Natives.

- The rate among blacks was 10.8 times that of whites.
- The rate among Hispanics was 2.6 times that of whites.
- The rate among American Indians/Alaska Natives was 1.9 times that of whites.

Congenital syphilis

- **CASES:** Oklahoma reported 2 cases in 2006.
- **RATES:** Oklahoma ranked 20 among 26 states, DC, and 1 territory reporting congenital syphilis cases with a rate of 3.9 cases per 100,000 live births compared to the total rate of 8.7 cases per 100,000.

Syphilis: P&S Rates and Congenital Cases, Oklahoma, 1997-2006



Total P&S Syphilis Rates by County, Oklahoma, 2006

