

Louisiana, 2006

Primary and secondary syphilis

- **CASES:** Louisiana reported 342 cases in 2006.
- **RATES:** Louisiana ranked 2 among 50 states, DC, and 3 territories with 7.6 cases per 100,000 population compared to the total rate of 3.3 cases per 100,000 population.

Rates of primary and secondary syphilis, by sex

- In Louisiana, the rate among males was 10.0 per 100,000 population compared to the total male rate of 5.7 per 100,000.
- The rate among females was 5.3 per 100,000 compared to the total female rate of 1.0 per 100,000.

Rates of primary and secondary syphilis, by race/ethnicity

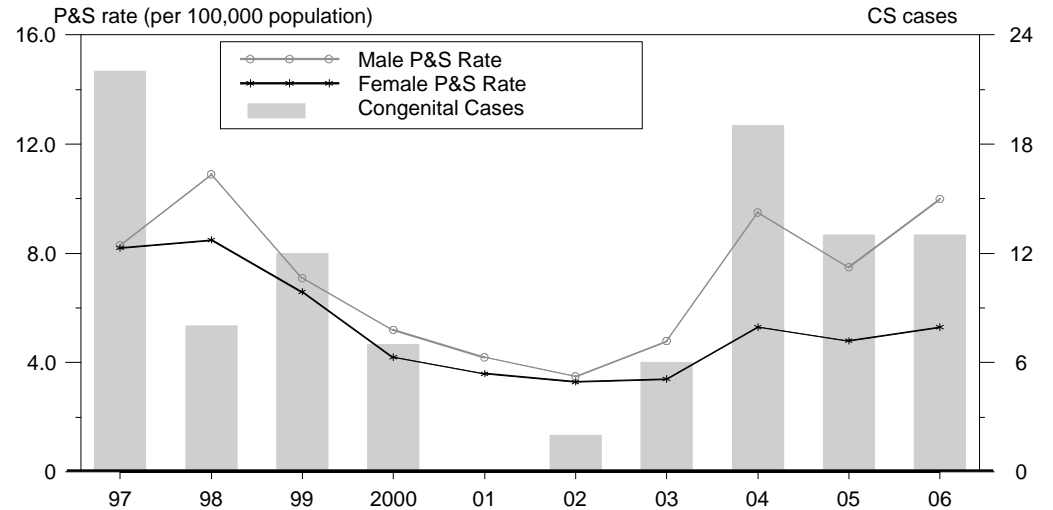
In Louisiana, the race/ethnicity adjusted rates per 100,000 population were 2.4 among whites, 18.4 among blacks, 0.0 among Hispanics, 0.0 among Asian/Pacific Islanders, and 0.0 among American Indians/Alaska Natives.

- The rate among blacks was 7.7 times that of whites.

Congenital syphilis

- **CASES:** Louisiana reported 13 cases in 2006.
- **RATES:** Louisiana ranked 6 among 26 states, DC, and 1 territory reporting congenital syphilis cases with a rate of 19.9 cases per 100,000 live births compared to the total rate of 8.7 cases per 100,000.

Syphilis: P&S Rates and Congenital Cases, Louisiana, 1997-2006



Total P&S Syphilis Rates by County, Louisiana, 2006

