

# New Jersey, 2005

## Primary and secondary syphilis

- **CASES:** New Jersey reported 133 cases in 2005.
- **RATES:** New Jersey ranked 28 among 50 states + DC + 3 territories: 1.5 cases per 100,000 population compared to the U.S. rate of 3.0 cases per 100,000 population.

## Male-female rates of primary and secondary syphilis

- In New Jersey, the rate among males was 2.7 per 100,000 population compared to the U.S. male rate of 5.1 per 100,000.
- The rate among females was 0.4 per 100,000 compared to the U.S. female rate of 0.9 per 100,000.

## Racial disparities of primary and secondary syphilis

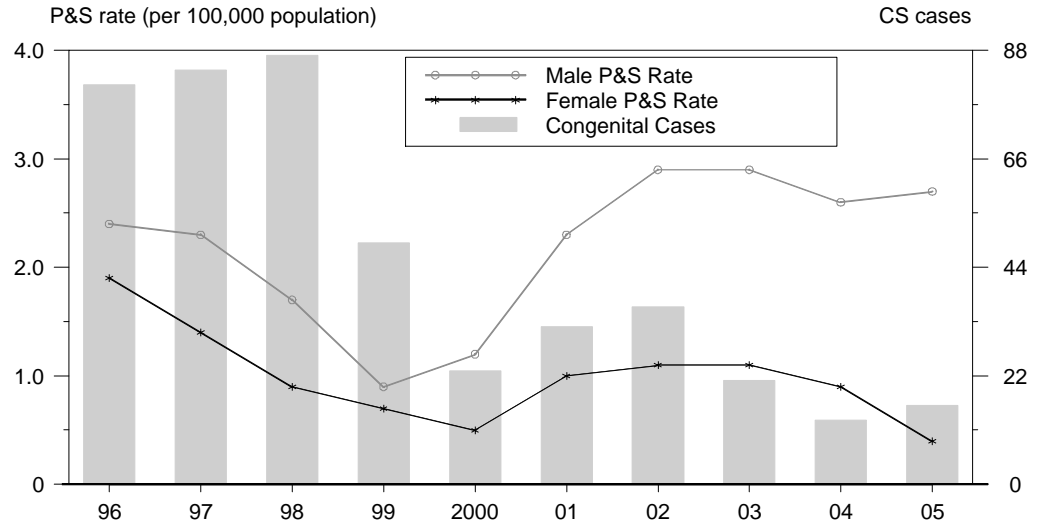
In New Jersey, the race/ethnicity adjusted rates per 100,000 population were 0.8 among whites, 5.1 among blacks, 2.0 among Hispanics, 0.2 among Asian/Pacific Islanders, and 0.0 among American Indians/Alaska Natives.

- The rate among blacks was 6.4 times that of whites.
- The rate among Hispanics was 2.5 times that of whites.

## Congenital syphilis

- **CASES:** New Jersey reported 16 cases in 2005.
- **RATES:** New Jersey ranked 10 among 28 states + 2 territories reporting at least one congenital syphilis case: 13.7 cases per 100,000 live births compared to the U.S. rate of 8.0 cases per 100,000.

## Syphilis: P&S Rates and Congenital Cases, New Jersey, 1996-2005



## Total P&S Syphilis Rates by County, New Jersey, 2005

