

# MMWR

MORBIDITY AND MORTALITY WEEKLY REPORT

- 121 Serogroup B Meningococcal Disease — Oregon, 1994
- 124 Trends in Sexual Risk Behaviors Among High School Students — United States, 1990, 1991, and 1993
- 132 Update: Influenza Activity — New York and United States, 1994–95 Season
- 135 Notice to Readers

## Serogroup B Meningococcal Disease — Oregon, 1994

In Oregon, the incidence of meningococcal disease has increased substantially, more than doubling from 2.2 cases per 100,000 persons in 1992 to 4.6 per 100,000 in 1994—the highest incidence in Oregon since 1943. This incidence was almost fivefold higher than recent estimates for the United States during 1989–1991 (approximately one case per 100,000 persons annually) (1). This report describes meningococcal disease surveillance data from 1994 and summarizes epidemiologic and laboratory data on serogroup B meningococcal disease in Oregon during 1987–1994.

During 1994, a total of 143 cases of meningococcal disease was reported to the State Health Division. In 124 cases, *Neisseria meningitidis* was isolated from a normally sterile site (confirmed cases); in four cases, gram-negative diplococci were detected in specimens obtained from a normally sterile site or in persons who had classic symptoms after contact with a confirmed case (presumed cases). Characteristic symptoms (including petechial rash and hypotension) occurred in 14 cases; however, these cases were not culture confirmed (suspected cases). Of 115 isolates for which serogroup was known, 70 (61%) were serogroup B, 40 (35%) were serogroup C, four were serogroup Y, and one was serogroup W-135. When compared with 1992 and 1993, the serogroup-specific incidence in 1994 was higher for both serogroups B and C.

Of the 70 culture-confirmed cases of serogroup B infection, 34 (49%) occurred in females. Seven (10%) cases were fatal; of these, one occurred in a child aged 2 years, and four deaths occurred in persons aged 55–88 years.

During 1987–1992, 63% (84 of 133) of cases of serogroup B occurred in children aged <5 years; in comparison, in 1994, 27% (19 of 70) occurred in this age group. When compared with 1987–1992, the incidence of reported serogroup B disease in 1994 increased modestly among those aged <5 years (from 6.9 to 8.4), approximately 14-fold among those aged 15–19 years (from 0.4 to 5.4), and approximately fourfold among those aged ≥60 years (from 0.3 to 1.1) (Figure 1).

In 1994, serogroup B cases occurred in 17 of the 36 counties in Oregon; these counties account for 83% of the total population of Oregon. The risk for disease was highest in counties in the Willamette Valley in the northwestern part of the state. Based on investigation of serogroup B cases, six (9%) were linked to other cases. Two co-primary cases (disease in a close contact within 24 hours of disease onset in a primary case) were linked to a single primary case. Four secondary cases (disease in a

*Meningococcal Disease — Continued*

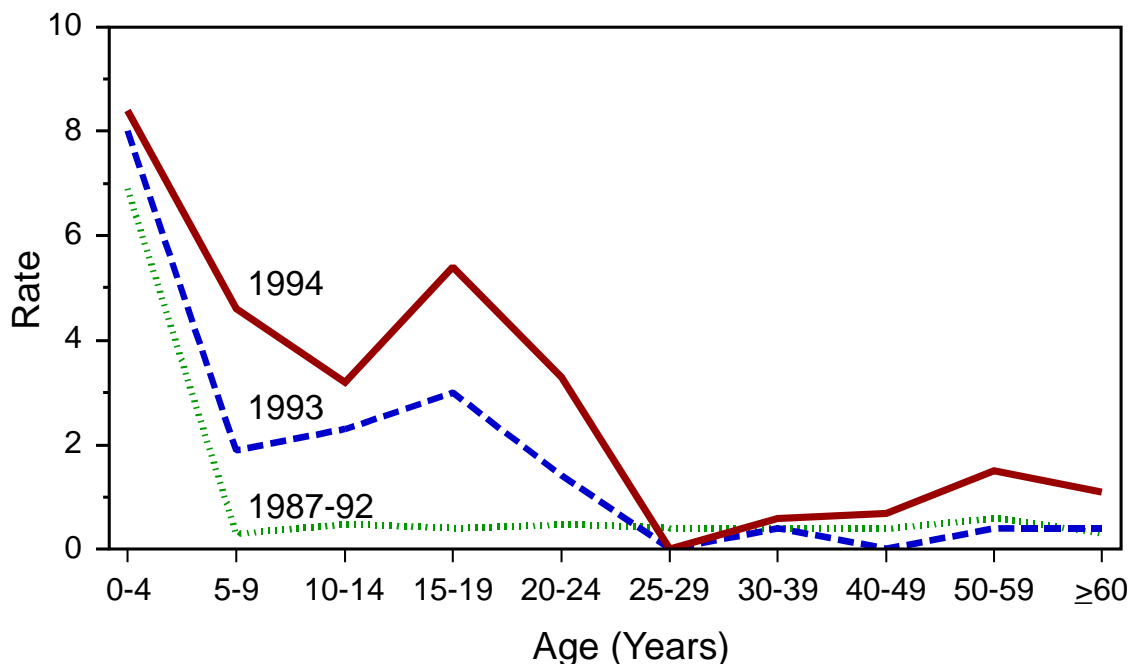
close contact >24 hours after disease onset in a primary case) were identified; at least two occurred in patients for whom appropriate chemoprophylaxis had been prescribed but who were noncompliant with therapy.

Of the 114 *N. meningitidis* serogroup B strains isolated in Oregon during 1993–1994, a total of 64 (56%) has been characterized at CDC by multilocus enzyme electrophoresis. Of these, 55 (86%) belong to the enzyme type-5 (ET-5) complex, a group of genetically related serogroup B meningococcal strains associated with epidemic meningococcal disease in other countries (2). Twelve of these isolates also have been serotyped, serosubtyped, and immunotyped; all are serotype 4 or 15, serosubtype P1.7,16, and immunotype L3,7,9,8,10.

*Reported by: K Hedberg, MD, F Hoesly, MD, D Fleming, MD, State Epidemiologist, State Health Div, Oregon Dept of Human Resources. K Steingart, MD, Southwest Washington Health District; M Goldoft, MD, P Stehr-Green, DrPH, State Epidemiologist, Washington Dept of Health. Div of Field Epidemiology, Epidemiology Program Office; Childhood and Respiratory Diseases Br, Div of Bacterial and Mycotic Diseases, National Center for Infectious Diseases, CDC.*

**Editorial Note:** The recent increased occurrence of serogroup B meningococcal disease in Oregon has been associated with a group of closely related strains belonging to the ET-5 clonal complex. These strains were first identified as the cause of a serogroup B meningococcal epidemic in Norway that began in 1974 and persisted through 1991 (3). After its identification in 1974, serogroup B meningococci belonging to the ET-5 complex subsequently caused epidemics in Europe, Cuba, and South America (2). Endemic meningococcal disease typically is caused by a heterogeneous mix of strains. In comparison, the predominance of closely related strains, or clones, in Oregon is characteristic of epidemic disease, as is the disproportionate increase in age-specific incidence among young adults. The latter pattern has been suggested as

**FIGURE 1. Incidence rate\* of serogroup B meningococcal disease, by age group and year of onset — Oregon, 1987–1994**



\*Per 100,000 population.

*Meningococcal Disease — Continued*

a reliable predictor of the transition from endemic to epidemic meningococcal disease (4,5).

Although serogroup C meningococcal outbreaks have occurred with increasing frequency nationwide since 1991 (6), Oregon is the only state to report substantially increased rates of serogroup B meningococcal disease. While Washington state had only a slight increase in the overall rate of meningococcal disease in 1994, rates of serogroup B meningococcal disease in Clark County, Washington (1994 population: 280,800) (across the Columbia River from metropolitan Portland, Oregon), have increased almost fivefold (from 1.5 per 100,000 in 1987 to 7.1 per 100,000 in 1994). These increasing rates underscore the need for determining the serogroup of all isolates to assist in assessing trends in the occurrence of meningococcal disease and serogroup distribution of invasive *N. meningitidis* in other states.

The primary means for the control and prevention of serogroup B meningococcal disease is chemoprophylaxis of close contacts. The meningococcal vaccine licensed in the United States provides protection against serogroups A, C, Y, and W-135 but does not provide protection against serogroup B meningococcal disease. Meningococcal capsular polysaccharides determine serogroup and are used in purified form to produce the A/C/Y/W-135 vaccine. Unlike the other major meningococcal serogroups, however, serogroup B capsular polysaccharide is poorly immunogenic in humans. Alternate approaches to the development of a serogroup B meningococcal vaccine have focused on use of outer-membrane proteins from specific epidemic serogroup B meningococcal strains.

Three outer-membrane protein-based serogroup B meningococcal vaccines employing two-dose regimens have been effective among older children and young adults in large clinical trials outside the United States (7-9); estimated efficacies ranged from 57% to 83%. The only vaccine available commercially is not licensed for use in the United States but has been used in some South American countries to control serogroup B meningococcal epidemics. In São Paulo, Brazil, approximately 2.4 million children aged 3 months to 6 years were vaccinated during 1989 and 1990, and the vaccine was estimated to be 74% effective in children aged 4-6 years (10). Efforts to initiate studies in the United States to evaluate available vaccines under an investigational new drug application are in progress.

Oregon and three other states (California, Connecticut, and Minnesota) are participating in a cooperative agreement with CDC to study emerging infectious diseases. One focus of this program in Oregon is disease caused by *N. meningitidis* serogroup B; a study of potentially modifiable risk factors for meningococcal disease is under way.

*References*

1. Jackson LA, Wenger JD, Meningococcal Disease Study Group. Laboratory-based surveillance for meningococcal disease in selected areas, United States—1989–1991. In: CDC surveillance summaries (June). MMWR 1993;42(no. SS-2):21–30.
2. Caugant DA, Frohølm LO, Bøvre K, et al. Intercontinental spread of a genetically distinctive complex of clones of *Neisseria meningitidis* causing epidemic disease. Proc Natl Acad Sci U S A 1986;83:4927–31.
3. Lystad A, Aasen S. The epidemiology of meningococcal disease in Norway, 1975–91. NIPH Ann 1991;14:57–66.
4. Peltola H, Kataja JM, Makela PH. Shift in the age-distribution of meningococcal disease as predictor of an epidemic? Lancet 1982;2:595–7.

*Meningococcal Disease — Continued*

5. Jones DM, Mallard RH. Age incidence of meningococcal infection England and Wales, 1984–1991. *J Infect* 1993;27:83–8.
6. Jackson LA, Schuchat A, Reeves MW, Wenger JD. Serogroup C meningococcal outbreaks in the United States: an emerging threat. *JAMA* 1995;273:383–94.
7. Sierra GVG, Campa HC, Varcacel NM, et al. Vaccine against group B *Neisseria meningitidis*: protection trial and mass vaccination results in Cuba. *NIPH Ann* 1991;14:195–207.
8. Bjune G, Høiby EA, Grønnesby JK, et al. Effect of outer membrane vesicle vaccine against group B meningococcal disease in Norway. *Lancet* 1991;338:1093–6.
9. Boslego JB, Garcia J, Cruz C, et al. Efficacy, safety, and immunogenicity of a meningococcal group B (15:P1.3) outer membrane protein vaccine in Iquique, Chile. *Vaccine* 1995 (in press).
10. de Moraes JC, Perkins BA, Camargo MCC, et al. Protective efficacy of a serogroup B meningococcal vaccine in São Paulo, Brazil. *Lancet* 1992;340:1074–8.

### **Trends in Sexual Risk Behavior Among High School Students — United States, 1990, 1991, and 1993**

Since the early 1980s, adolescents in the United States have experienced high rates of unintended pregnancies (1) and sexually transmitted diseases (STDs) (2), including HIV infection (3). Since 1990, CDC's Youth Risk Behavior Surveillance System has enabled measurement of priority health-risk behaviors among high school students at the national, state, and local levels (4). This report examines data from the 1990, 1991, and 1993 national Youth Risk Behavior Survey (YRBS)\* to describe trends in selected self-reported sexual risk behaviors among U.S. high school students.

The YRBS employed a cross-sectional, three-stage, cluster sample of students in grades 9–12 in public and private schools in all 50 states and the District of Columbia. For 1990, 1991, and 1993, sample sizes were 11,631, 12,272, and 16,296, respectively, and the overall response rates were 64%, 68%, and 70%, respectively. To enable separate analysis of black and Hispanic students, schools with high proportions of these students were oversampled; numbers of students in other racial groups were too small for meaningful analysis. A weighting factor was applied to each student record to adjust for nonresponse and oversampling. Trends were assessed only for sexual risk behaviors measured by questions identically worded in each survey year. To determine temporal differences, 95% confidence intervals were calculated for each estimate by using SUDAAN (5).

From 1990 to 1993, the percentages of high school students remained constant for those who reported ever having had sexual intercourse (i.e., sexually experienced), ever having had sexual intercourse with four or more partners, having had sexual intercourse during the 3 months preceding the survey (i.e., sexually active), having used alcohol or drugs before last sexual intercourse, and having used birth control pills at last sexual intercourse (Table 1). In contrast, the percentage of those who reported condom use at last sexual intercourse increased significantly, from 46.2% in 1991 to 52.8% in 1993 (Table 1); however, subgroup analyses indicated a significant increase in condom use only among females (from 38.0% to 46.0%) and blacks (from 48.0% to 56.5%) (Table 2).

*Reported by: Div of Adolescent and School Health, National Center for Chronic Disease Prevention and Health Promotion, CDC.*

---

\*The YRBS was not conducted in 1992.

## Sexual Risk Behaviors — Continued

**TABLE 1. Percentage of high school students who reported selected sexual risk behaviors, by year — Youth Risk Behavior Survey (YRBS), United States, 1990, 1991, and 1993\***

| Behavior  | 1990            |                       | 1991 |               | 1993 |                            |
|---|-----------------|-----------------------|------|---------------|------|----------------------------|
|   | %               | (95% CI) <sup>†</sup> | %    | (95% CI)      | %    | (95% CI)                   |
| Ever had sexual intercourse                                     | 54.2            | (51.3%–57.1%)         | 54.1 | (51.1%–57.1%) | 53.0 | (50.3%–55.7%)              |
| Ever had sexual intercourse with four or more partners          | 19.0            | (17.0%–21.0%)         | 18.7 | (16.8%–20.6%) | 18.8 | (16.8%–20.8%)              |
| Had sexual intercourse during the 3 months preceding the survey | 39.4            | (36.7%–42.1%)         | 37.5 | (34.8%–40.2%) | 37.6 | (35.6%–39.6%)              |
| Used alcohol or drugs before last sexual intercourse            | NA <sup>§</sup> |                       | 11.8 | (10.3%–13.3%) | 11.0 | (10.2%–11.8%)              |
| Used birth control pills at last sexual intercourse             | 14.6            | (12.6%–16.6%)         | 17.8 | (15.6%–20.0%) | 18.4 | (16.3%–20.5%)              |
| Used condoms at last sexual intercourse                         | NA <sup>§</sup> |                       | 46.2 | (43.1%–49.3%) | 52.8 | (50.1%–55.5%) <sup>¶</sup> |

\*The YRBS was not conducted in 1992.

<sup>†</sup>Confidence interval.<sup>§</sup>Data not available; the question was worded differently in 1990.<sup>¶</sup>Significantly different at  $p < 0.05$ .**TABLE 2. Percentage of high school students who reported condom use at last sexual intercourse among those who had had sexual intercourse during the 3 months preceding the survey, by sex, grade, and race/ethnicity — Youth Risk Behavior Survey, United States, 1991 and 1993**

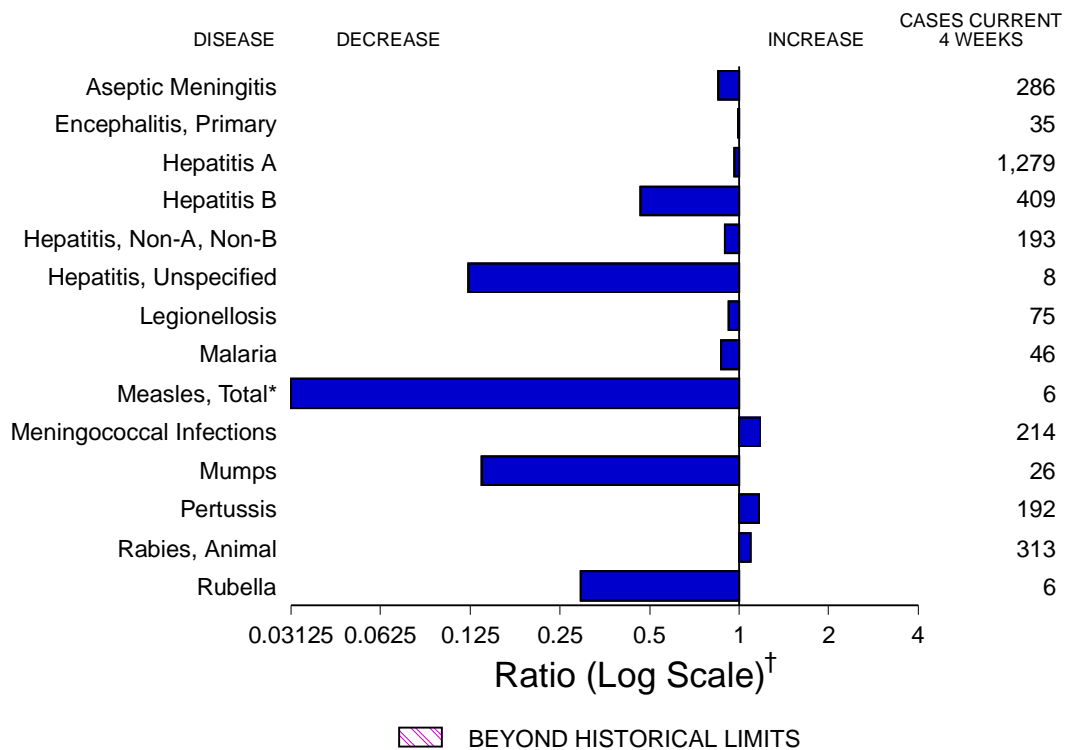
| Characteristic                    | 1991        |                       | 1993        |                                  |
|-----------------------------------|-------------|-----------------------|-------------|----------------------------------|
|                                   | %           | (95% CI) <sup>*</sup> | %           | (95% CI)                         |
| <b>Sex</b>                        |             |                       |             |                                  |
| Male                              | 54.6        | (51.1%–58.1%)         | 59.2        | (55.4%–63.0%)                    |
| Female                            | 38.0        | (33.8%–42.2%)         | 46.0        | (43.2%–48.8%) <sup>†</sup>       |
| <b>Grade</b>                      |             |                       |             |                                  |
| 9th                               | 53.3        | (47.3%–59.3%)         | 61.6        | (55.9%–67.3%)                    |
| 10th                              | 46.3        | (41.8%–50.8%)         | 54.7        | (50.2%–59.2%)                    |
| 11th                              | 48.7        | (42.9%–54.5%)         | 55.3        | (52.3%–58.3%)                    |
| 12th                              | 41.6        | (37.9%–45.3%)         | 46.5        | (42.5%–50.5%)                    |
| <b>Race/Ethnicity<sup>§</sup></b> |             |                       |             |                                  |
| White, non-Hispanic               | 46.6        | (42.2%–51.0%)         | 52.3        | (48.4%–56.2%)                    |
| Black, non-Hispanic               | 48.0        | (44.0%–52.0%)         | 56.5        | (52.5%–60.5%) <sup>†</sup>       |
| Hispanic                          | 37.6        | (32.1%–43.1%)         | 46.1        | (42.0%–50.2%)                    |
| <b>Total</b>                      | <b>46.2</b> | <b>(43.1%–49.3%)</b>  | <b>52.8</b> | <b>(50.1%–55.5%)<sup>†</sup></b> |

\*Confidence interval.

<sup>†</sup>Significantly different at  $p < 0.05$ .<sup>§</sup>Numbers of students in other racial groups were too small for meaningful analysis.

(Continued on page 131)

**FIGURE I. Notifiable disease reports, comparison of 4-week totals ending February 18, 1995, with historical data — United States**



\*The large apparent decrease in the number of reported cases of measles (total) reflects dramatic fluctuations in the historical baseline.

<sup>†</sup>Ratio of current 4-week total to mean of 15 4-week totals (from previous, comparable, and subsequent 4-week periods for the past 5 years). The point where the hatched area begins is based on the mean and two standard deviations of these 4-week totals.

**TABLE I. Summary — cases of specified notifiable diseases, United States, cumulative, week ending February 18, 1995 (7th Week)**

|                                 | Cum. 1995 |   | Cum. 1995 |
|---------------------------------|-----------|---|-----------|
| Anthrax                         | -         | Plague  | -         |
| Aseptic Meningitis              | 490       | Poliomyelitis, Paralytic                        | -         |
| Brucellosis                     | 9         | Psittacosis                                     | 3         |
| Cholera                         | -         | Rabies, human                                   | -         |
| Congenital rubella syndrome     | 1         | Rocky Mountain Spotted Fever                    | 14        |
| Diphtheria                      | -         | Syphilis, congenital, age < 1 year <sup>†</sup> | -         |
| Encephalitis, primary           | 57        | Tetanus   | 3         |
| Encephalitis, post-infectious   | 10        | Toxic shock syndrome                            | 19        |
| <i>Haemophilus influenzae</i> * | 180       | Trichinosis                                     | 2         |
| Hansen Disease                  | 12        | Tularemia                                       | 3         |
| Hepatitis, unspecified          | 20        | Typhoid fever                                   | 36        |
| Leptospirosis                   | 7         |   |           |

\*Of 175 cases of known age, 41 (23%) were reported among children less than 5 years of age.

<sup>†</sup>Updated quarterly from reports to the Division of Sexually Transmitted Diseases and HIV Prevention, National Center for Prevention Services. First quarter data not yet available.

-: no reported cases

**TABLE II. Cases of selected notifiable diseases, United States, weeks ending February 18, 1995, and February 19, 1994 (7th Week)**

| Reporting Area | AIDS* | Gonorrhea |        | Hepatitis (Viral), by type |           |           |           |           |           | Legionellosis |     |
|----------------|-------|-----------|--------|----------------------------|-----------|-----------|-----------|-----------|-----------|---------------|-----|
|                |       |           |        | A                          |           | B         |           | NA,NB     |           |               |     |
|                |       |           |        | Cum. 1995                  | Cum. 1994 | Cum. 1995 | Cum. 1994 | Cum. 1995 | Cum. 1994 |               |     |
| UNITED STATES  | 5,574 | 43,200    | 49,107 | 2,478                      | 2,394     | 750       | 1,454     | 296       | 509       | 124           | 195 |
| NEW ENGLAND    | 312   | 837       | 1,130  | 21                         | 37        | 13        | 42        | 6         | 14        | 1             | 1   |
| Maine          | 15    | 8         | 5      | 5                          | 3         | 1         | -         | -         | -         | -             | -   |
| N.H.           | 5     | 17        | 7      | 1                          | 2         | 1         | 4         | -         | 2         | -             | -   |
| Vt.            | 1     | 3         | 5      | -                          | -         | -         | -         | -         | -         | -             | -   |
| Mass.          | 199   | 462       | 414    | 4                          | 17        | 4         | 28        | 6         | 6         | 1             | -   |
| R.I.           | 9     | 70        | 61     | 4                          | 10        | 5         | 2         | -         | 6         | -             | 1   |
| Conn.          | 83    | 277       | 638    | 7                          | 5         | 2         | 8         | -         | -         | -             | -   |
| MID. ATLANTIC  | 1,729 | 2,227     | 4,724  | 105                        | 169       | 71        | 179       | 37        | 70        | 11            | 18  |
| Upstate N.Y.   | 186   | 631       | 806    | 20                         | 27        | 34        | 34        | 21        | 19        | 3             | 2   |
| N.Y. City      | 934   | 1,054     | 2,324  | 51                         | 76        | 8         | 35        | 1         | 1         | -             | -   |
| N.J.           | 379   | 535       | 64     | 19                         | 40        | 18        | 52        | 10        | 40        | 4             | 3   |
| Pa.            | 230   | 7         | 1,530  | 15                         | 26        | 11        | 58        | 5         | 10        | 4             | 13  |
| E.N. CENTRAL   | 484   | 10,795    | 10,127 | 393                        | 303       | 92        | 208       | 28        | 56        | 38            | 88  |
| Ohio           | 32    | 4,044     | 4,261  | 309                        | 82        | 11        | 32        | 1         | 1         | 24            | 32  |
| Ind.           | 38    | 844       | 1,119  | 19                         | 50        | 21        | 41        | 1         | 2         | 6             | 31  |
| Ill.           | 243   | 2,588     | 1,486  | 17                         | 100       | 5         | 47        | 2         | 14        | 1             | 6   |
| Mich.          | 140   | 2,990     | 2,342  | 46                         | 41        | 55        | 53        | 24        | 39        | 7             | 16  |
| Wis.           | 31    | 329       | 919    | 2                          | 30        | -         | 35        | -         | -         | -             | 3   |
| W.N. CENTRAL   | 102   | 2,617     | 2,596  | 76                         | 118       | 31        | 73        | 10        | 3         | 8             | 16  |
| Minn.          | 25    | 434       | 493    | 5                          | 10        | 1         | 6         | -         | 1         | -             | -   |
| Iowa           | 4     | 204       | 146    | 8                          | 5         | 9         | 3         | 2         | -         | 2             | 13  |
| Mo.            | 51    | 1,504     | 1,250  | 56                         | 77        | 21        | 57        | 5         | 1         | 6             | 1   |
| N. Dak.        | -     | -         | 3      | -                          | 1         | -         | -         | -         | -         | -             | -   |
| S. Dak.        | -     | 19        | 20     | -                          | -         | -         | -         | 1         | -         | -             | -   |
| Nebr.          | 12    | -         | 232    | -                          | 21        | -         | 3         | -         | -         | -             | 1   |
| Kans.          | 10    | 456       | 452    | 7                          | 4         | -         | 4         | 2         | 1         | -             | 1   |
| S. ATLANTIC    | 1,347 | 15,212    | 14,115 | 122                        | 131       | 122       | 338       | 36        | 92        | 29            | 36  |
| Del.           | 29    | 295       | 213    | 2                          | 3         | 1         | 3         | -         | -         | -             | -   |
| Md.            | 184   | 2,129     | 2,502  | 29                         | 25        | 26        | 39        | 4         | 10        | 10            | 7   |
| D.C.           | 77    | 782       | 861    | 1                          | 4         | 7         | 8         | -         | -         | 1             | -   |
| Va.            | 136   | 1,396     | 2,054  | 31                         | 10        | 9         | 12        | -         | 5         | -             | 2   |
| W. Va.         | 4     | 81        | 87     | 4                          | 1         | 9         | 4         | 6         | 1         | 3             | 1   |
| N.C.           | 82    | 3,538     | 3,833  | 14                         | 14        | 39        | 59        | 11        | 11        | 7             | 2   |
| S.C.           | 77    | 1,775     | 1,598  | -                          | 6         | 3         | 5         | -         | -         | 3             | 1   |
| Ga.            | 235   | 2,406     | -      | -                          | 8         | 2         | 168       | 1         | 57        | 2             | 15  |
| Fla.           | 523   | 2,810     | 2,967  | 41                         | 60        | 26        | 40        | 14        | 8         | 3             | 8   |
| E.S. CENTRAL   | 139   | 4,579     | 4,453  | 57                         | 69        | 70        | 186       | 44        | 128       | 3             | 13  |
| Ky.            | 7     | 632       | 599    | 10                         | 41        | 6         | 22        | 1         | 4         | 1             | 2   |
| Tenn.          | 76    | 83        | 1,413  | 23                         | 13        | 45        | 152       | 42        | 124       | -             | 7   |
| Ala.           | 35    | 2,622     | 2,441  | 22                         | 8         | 19        | 12        | 1         | -         | 1             | 2   |
| Miss.          | 21    | 1,242     | -      | 2                          | 7         | -         | -         | -         | -         | 1             | 2   |
| W.S. CENTRAL   | 379   | 3,705     | 5,826  | 215                        | 198       | 76        | 93        | 34        | 29        | 1             | 1   |
| Ark.           | 20    | 250       | 835    | 10                         | 7         | -         | 4         | -         | -         | -             | -   |
| La.            | 90    | 1,737     | 2,080  | 5                          | 8         | 5         | 9         | -         | 3         | -             | -   |
| Okla.          | 35    | 14        | 564    | 74                         | 34        | 37        | 37        | 32        | 25        | 1             | 1   |
| Tex.           | 234   | 1,704     | 2,347  | 126                        | 149       | 34        | 43        | 2         | 1         | -             | -   |
| MOUNTAIN       | 171   | 1,102     | 1,228  | 582                        | 508       | 70        | 76        | 45        | 61        | 20            | 14  |
| Mont.          | 7     | 17        | 23     | 8                          | -         | 4         | 1         | 2         | -         | 1             | 1   |
| Idaho          | 5     | 19        | 11     | 57                         | 39        | 12        | 6         | 4         | 16        | 2             | -   |
| Wyo.           | 1     | 6         | 18     | 21                         | 3         | -         | 3         | 17        | 12        | -             | -   |
| Colo.          | 76    | 411       | 469    | 91                         | 51        | 17        | 16        | 11        | 17        | 6             | 4   |
| N. Mex.        | 7     | 155       | 145    | 119                        | 128       | 20        | 29        | 4         | 4         | -             | 1   |
| Ariz.          | 37    | 390       | 267    | 137                        | 233       | 11        | 11        | 5         | 4         | 8             | 1   |
| Utah           | 5     | 1         | 44     | 129                        | 29        | 2         | 4         | 2         | 4         | 1             | -   |
| Nev.           | 33    | 103       | 251    | 20                         | 25        | 4         | 6         | -         | 4         | 2             | 7   |
| PACIFIC        | 911   | 2,126     | 4,908  | 907                        | 861       | 205       | 259       | 56        | 56        | 13            | 8   |
| Wash.          | 91    | 331       | 442    | 28                         | 61        | 8         | 12        | 7         | 10        | -             | 2   |
| Oreg.          | 58    | -         | 176    | 172                        | 46        | 13        | 9         | 3         | 1         | -             | -   |
| Calif.         | 704   | 1,614     | 4,131  | 693                        | 719       | 180       | 225       | 38        | 43        | 11            | 5   |
| Alaska         | 18    | 117       | 71     | 9                          | 28        | 1         | 1         | -         | -         | -             | -   |
| Hawaii         | 40    | 64        | 88     | 5                          | 7         | 3         | 12        | 8         | 2         | 2             | 1   |
| Guam           | -     | -         | 21     | -                          | -         | -         | -         | -         | -         | -             | -   |
| P.R.           | 65    | 52        | 73     | 9                          | 1         | 52        | 18        | 81        | 2         | -             | -   |
| V.I.           | -     | -         | 3      | -                          | -         | -         | 1         | -         | -         | -             | -   |
| Amer. Samoa    | -     | 4         | 4      | 2                          | 2         | -         | -         | -         | -         | -             | -   |
| C.N.M.I.       | -     | -         | 11     | -                          | 1         | -         | -         | -         | -         | -             | -   |

N: Not notifiable U: Unavailable -: no reported cases C.N.M.I.: Commonwealth of Northern Mariana Islands

\*Updated monthly to the Division of HIV/AIDS, National Center for Infectious Diseases; last update January 26, 1995.

**TABLE II. (Cont'd.) Cases of selected notifiable diseases, United States, weeks ending February 18, 1995, and February 19, 1994 (7th Week)**

| Reporting Area | Lyme Disease |           | Malaria   |           | Measles (Rubeola) |           |           |           |           |           | Meningococcal Infections |           | Mumps     |           |
|----------------|--------------|-----------|-----------|-----------|-------------------|-----------|-----------|-----------|-----------|-----------|--------------------------|-----------|-----------|-----------|
|                | Cum. 1995    | Cum. 1994 | Cum. 1995 | Cum. 1994 | Indigenous        |           | Imported* |           | Total     |           | Cum. 1995                | Cum. 1994 | Cum. 1995 | Cum. 1994 |
|                |              |           |           |           | 1995              | Cum. 1995 | 1995      | Cum. 1995 | Cum. 1995 | Cum. 1994 |                          |           |           |           |
| UNITED STATES  | 351          | 320       | 87        | 130       | -                 | 14        | -         | -         | 14        | 37        | 377                      | 444       | 75        | 177       |
| NEW ENGLAND    | 13           | 33        | 4         | 12        | -                 | 2         | -         | -         | 2         | 1         | 25                       | 22        | -         | 5         |
| Maine          | -            | -         | -         | 1         | -                 | -         | -         | -         | -         | -         | 2                        | 3         | -         | 3         |
| N.H.           | -            | 2         | -         | 1         | -                 | -         | -         | -         | -         | -         | -                        | 1         | -         | 2         |
| Vt.            | -            | 1         | -         | -         | -                 | -         | -         | -         | -         | -         | -                        | 1         | -         | -         |
| Mass.          | 13           | 3         | 1         | 3         | -                 | -         | -         | -         | 1         | 11        | 7                        | -         | -         | -         |
| R.I.           | -            | 5         | 2         | 4         | -                 | 2         | -         | -         | 2         | -         | -                        | -         | -         | -         |
| Conn.          | -            | 22        | 1         | 3         | -                 | -         | -         | -         | -         | -         | 12                       | 10        | -         | -         |
| MID. ATLANTIC  | 264          | 219       | 13        | 25        | -                 | 1         | -         | -         | 1         | 7         | 28                       | 33        | 10        | 19        |
| Upstate N.Y.   | 101          | 143       | 2         | 9         | -                 | -         | -         | -         | 1         | 15        | 11                       | 3         | 2         | -         |
| N.Y. City      | -            | 9         | 3         | 4         | -                 | 1         | -         | -         | 1         | -         | -                        | -         | -         | -         |
| N.J.           | 24           | 52        | 6         | 9         | -                 | -         | -         | -         | 4         | 11        | 11                       | -         | 4         | -         |
| Pa.            | 139          | 15        | 2         | 3         | -                 | -         | -         | -         | 1         | 2         | 11                       | 7         | 13        | -         |
| E.N. CENTRAL   | 8            | 4         | 8         | 16        | -                 | -         | -         | -         | 9         | 57        | 81                       | 14        | 55        | -         |
| Ohio           | 8            | 4         | -         | 1         | -                 | -         | -         | -         | 7         | 19        | 20                       | 7         | 8         | -         |
| Ind.           | -            | -         | 1         | 4         | -                 | -         | -         | -         | -         | 9         | 16                       | -         | 2         | -         |
| Ill.           | -            | -         | 6         | 8         | -                 | -         | -         | -         | -         | 22        | 24                       | -         | 34        | -         |
| Mich.          | -            | -         | 1         | 3         | -                 | -         | -         | -         | -         | 7         | 9                        | 7         | 10        | -         |
| Wis.           | -            | -         | -         | -         | -                 | -         | -         | -         | 2         | -         | 12                       | -         | 1         | -         |
| W.N. CENTRAL   | 6            | 6         | 3         | 5         | -                 | -         | -         | -         | -         | 12        | 34                       | 4         | 5         | -         |
| Minn.          | -            | 1         | 2         | -         | -                 | -         | -         | -         | -         | -         | 1                        | -         | -         | -         |
| Iowa           | -            | 1         | -         | 1         | -                 | -         | -         | -         | -         | 6         | 2                        | 1         | 1         | -         |
| Mo.            | -            | 3         | 1         | 4         | -                 | -         | -         | -         | -         | 4         | 22                       | 3         | 4         | -         |
| N. Dak.        | -            | -         | -         | -         | -                 | -         | -         | -         | -         | -         | -                        | -         | -         | -         |
| S. Dak.        | -            | -         | -         | -         | -                 | -         | -         | -         | -         | -         | 2                        | -         | -         | -         |
| Nebr.          | -            | -         | -         | -         | U                 | -         | U         | -         | -         | -         | 1                        | -         | -         | -         |
| Kans.          | 6            | 1         | -         | -         | -                 | -         | -         | -         | -         | 2         | 6                        | -         | -         | -         |
| S. ATLANTIC    | 49           | 39        | 26        | 31        | -                 | -         | -         | -         | 3         | 73        | 75                       | 11        | 34        | -         |
| Del.           | 1            | 5         | 1         | 2         | -                 | -         | -         | -         | -         | 1         | -                        | -         | -         | -         |
| Md.            | 38           | 5         | 4         | 4         | -                 | -         | -         | -         | -         | 2         | 5                        | -         | 6         | -         |
| D.C.           | -            | -         | 3         | 5         | -                 | -         | -         | -         | -         | 1         | 1                        | -         | -         | -         |
| Va.            | 1            | 7         | 2         | 5         | -                 | -         | -         | -         | -         | 4         | 9                        | 4         | 4         | -         |
| W. Va.         | 5            | 2         | -         | -         | -                 | -         | -         | -         | -         | -         | 5                        | -         | 2         | -         |
| N.C.           | 3            | 12        | 4         | 1         | -                 | -         | -         | -         | -         | 10        | 10                       | 3         | 15        | -         |
| S.C.           | 1            | -         | -         | 1         | -                 | -         | -         | -         | -         | 6         | 3                        | 1         | 4         | -         |
| Ga.            | -            | 8         | 3         | 5         | -                 | -         | -         | -         | -         | 24        | 12                       | -         | 2         | -         |
| Fla.           | -            | -         | 9         | 8         | -                 | -         | -         | -         | 3         | 25        | 30                       | 3         | 1         | -         |
| E.S. CENTRAL   | -            | 6         | 1         | 3         | -                 | -         | -         | -         | 14        | 19        | 37                       | 3         | 3         | -         |
| Ky.            | -            | 5         | -         | -         | -                 | -         | -         | -         | -         | 7         | 12                       | -         | -         | -         |
| Tenn.          | -            | -         | -         | 1         | -                 | -         | -         | -         | 14        | 2         | 8                        | -         | -         | -         |
| Ala.           | -            | 1         | 1         | 1         | -                 | -         | -         | -         | -         | 8         | 17                       | 2         | -         | -         |
| Miss.          | -            | -         | -         | 1         | -                 | -         | -         | -         | -         | 2         | -                        | 1         | 3         | -         |
| W.S. CENTRAL   | -            | -         | -         | -         | -                 | 1         | -         | -         | 1         | 42        | 44                       | 4         | 23        | -         |
| Ark.           | -            | -         | -         | -         | -                 | -         | -         | -         | -         | 3         | 2                        | -         | -         | -         |
| La.            | -            | -         | -         | -         | -                 | -         | -         | -         | -         | 5         | 2                        | 1         | 1         | -         |
| Okla.          | -            | -         | -         | -         | -                 | -         | -         | -         | -         | 6         | 6                        | -         | 5         | -         |
| Tex.           | -            | -         | -         | -         | -                 | 1         | -         | -         | 1         | 28        | 34                       | 3         | 17        | -         |
| MOUNTAIN       | 2            | 4         | 8         | 3         | -                 | 10        | -         | -         | 10        | -         | 35                       | 32        | 3         | 5         |
| Mont.          | -            | -         | 1         | -         | -                 | -         | -         | -         | -         | 1         | 1                        | -         | -         | -         |
| Idaho          | -            | 1         | -         | -         | -                 | -         | -         | -         | -         | 1         | 4                        | -         | 1         | -         |
| Wyo.           | -            | -         | -         | -         | -                 | -         | -         | -         | -         | 1         | 1                        | -         | -         | -         |
| Colo.          | 1            | -         | 5         | 1         | -                 | -         | -         | -         | -         | 9         | 3                        | -         | -         | -         |
| N. Mex.        | -            | 3         | 2         | 1         | -                 | 5         | -         | -         | 5         | 6         | 3                        | N         | N         | -         |
| Ariz.          | -            | -         | -         | -         | -                 | 5         | -         | -         | 5         | 15        | 13                       | 1         | -         | -         |
| Utah           | -            | -         | -         | 1         | -                 | -         | -         | -         | -         | 1         | 5                        | 1         | 1         | -         |
| Nev.           | 1            | -         | -         | -         | -                 | -         | -         | -         | -         | 1         | 2                        | 1         | 3         | -         |
| PACIFIC        | 9            | 9         | 24        | 35        | -                 | -         | -         | -         | 2         | 86        | 86                       | 26        | 28        | -         |
| Wash.          | -            | -         | 3         | 1         | -                 | -         | -         | -         | -         | 6         | 6                        | 1         | 1         | -         |
| Oreg.          | -            | -         | 2         | 1         | -                 | -         | -         | -         | -         | 24        | 15                       | N         | N         | -         |
| Calif.         | 9            | 9         | 17        | 29        | -                 | -         | -         | -         | 2         | 55        | 62                       | 22        | 24        | -         |
| Alaska         | -            | -         | 1         | -         | U                 | -         | U         | -         | -         | -         | -                        | 2         | 2         | -         |
| Hawaii         | -            | -         | 1         | 4         | -                 | -         | -         | -         | -         | 1         | 3                        | 1         | 1         | -         |
| Guam           | -            | -         | -         | -         | U                 | -         | U         | -         | 1         | -         | -                        | -         | 1         | -         |
| P.R.           | -            | -         | -         | -         | -                 | -         | -         | -         | 2         | 6         | 1                        | -         | -         | -         |
| V.I.           | -            | -         | -         | -         | U                 | -         | U         | -         | -         | -         | -                        | -         | -         | -         |
| Amer. Samoa    | -            | -         | -         | -         | U                 | -         | U         | -         | -         | -         | -                        | -         | -         | -         |
| C.N.M.I.       | -            | -         | -         | 1         | U                 | -         | U         | -         | 21        | -         | -                        | -         | -         | -         |

\*For imported measles, cases include only those resulting from importation from other countries.

N: Not notifiable U: Unavailable -: no reported cases



**TABLE II. (Cont'd.) Cases of selected notifiable diseases, United States, weeks ending February 18, 1995, and February 19, 1994 (7th Week)**

| Reporting Area | Pertussis |              |              | Rubella |              |              | Syphilis<br>(Primary &<br>Secondary) |              | Tuberculosis |              | Rabies,<br>Animal |              |
|----------------|-----------|--------------|--------------|---------|--------------|--------------|--------------------------------------|--------------|--------------|--------------|-------------------|--------------|
|                | 1995      | Cum.<br>1995 | Cum.<br>1994 | 1995    | Cum.<br>1995 | Cum.<br>1994 | Cum.<br>1995                         | Cum.<br>1994 | Cum.<br>1995 | Cum.<br>1994 | Cum.<br>1995      | Cum.<br>1994 |
| UNITED STATES  | 33        | 341          | 527          | 3       | 17           | 23           | 1,952                                | 2,389        | 1,447        | 1,793        | 617               | 612          |
| NEW ENGLAND    | -         | 23           | 38           | -       | 1            | 12           | 25                                   | 25           | 23           | 31           | 189               | 175          |
| Maine          | -         | 5            | 2            | -       | -            | -            | -                                    | -            | -            | -            | -                 | -            |
| N.H.           | -         | -            | 8            | -       | -            | -            | 1                                    | -            | -            | 1            | 22                | 19           |
| Vt.            | -         | 2            | 7            | -       | -            | -            | -                                    | -            | -            | -            | 23                | 13           |
| Mass.          | -         | 14           | 17           | -       | 1            | 12           | 10                                   | 6            | 9            | 7            | 97                | 74           |
| R.I.           | -         | -            | 2            | -       | -            | -            | -                                    | 4            | 6            | 2            | -                 | 4            |
| Conn.          | -         | 2            | 2            | -       | -            | -            | 14                                   | 15           | 8            | 21           | 47                | 65           |
| MID. ATLANTIC  | 11        | 34           | 95           | -       | -            | 1            | 130                                  | 182          | 184          | 209          | 138               | 144          |
| Upstate N.Y.   | 11        | 18           | 23           | -       | -            | 1            | 11                                   | 16           | 13           | 35           | 85                | 88           |
| N.Y. City      | -         | 4            | 7            | -       | -            | -            | 89                                   | 134          | 74           | 115          | -                 | -            |
| N.J.           | -         | -            | 6            | -       | -            | -            | 24                                   | 5            | 45           | 38           | 31                | 35           |
| Pa.            | -         | 12           | 59           | -       | -            | -            | 6                                    | 27           | 52           | 21           | 22                | 21           |
| E.N. CENTRAL   | 5         | 51           | 156          | -       | -            | 4            | 331                                  | 300          | 197          | 175          | 1                 | 3            |
| Ohio           | 3         | 22           | 47           | -       | -            | -            | 115                                  | 121          | 39           | 34           | 1                 | -            |
| Ind.           | 1         | 1            | 10           | -       | -            | -            | 27                                   | 39           | 4            | 11           | -                 | -            |
| Ill.           | -         | -            | 58           | -       | -            | 4            | 122                                  | 59           | 105          | 94           | -                 | -            |
| Mich.          | 1         | 28           | 8            | -       | -            | -            | 41                                   | 32           | 46           | 31           | -                 | 1            |
| Wis.           | -         | -            | 33           | -       | -            | -            | 26                                   | 49           | 3            | 5            | -                 | 2            |
| W.N. CENTRAL   | -         | 10           | 12           | -       | -            | -            | 101                                  | 178          | 40           | 35           | 31                | 14           |
| Minn.          | -         | -            | -            | -       | -            | -            | 3                                    | 8            | 6            | 6            | -                 | -            |
| Iowa           | -         | 1            | -            | -       | -            | -            | 10                                   | 9            | 12           | 3            | 10                | 8            |
| Mo.            | -         | 2            | 5            | -       | -            | -            | 88                                   | 161          | 14           | 18           | 5                 | 1            |
| N. Dak.        | -         | 1            | -            | -       | -            | -            | -                                    | -            | -            | 1            | 4                 | -            |
| S. Dak.        | -         | 1            | -            | -       | -            | -            | -                                    | -            | -            | 4            | 7                 | 1            |
| Nebr.          | U         | -            | 1            | U       | -            | -            | -                                    | -            | -            | -            | -                 | -            |
| Kans.          | -         | 5            | 6            | -       | -            | -            | -                                    | -            | 8            | 3            | 5                 | 4            |
| S. ATLANTIC    | 1         | 36           | 75           | 1       | 1            | 1            | 476                                  | 769          | 234          | 334          | 201               | 191          |
| Del.           | -         | 1            | -            | -       | -            | -            | 3                                    | 1            | -            | 2            | 10                | 2            |
| Md.            | -         | -            | 25           | -       | -            | -            | 22                                   | 30           | 64           | 31           | 48                | 62           |
| D.C.           | -         | 1            | -            | -       | -            | -            | 20                                   | 25           | 15           | 18           | 1                 | 1            |
| Va.            | -         | -            | 9            | -       | -            | -            | 61                                   | 83           | 10           | 45           | 36                | 45           |
| W. Va.         | -         | -            | 1            | -       | -            | -            | -                                    | 1            | 13           | 5            | 8                 | 7            |
| N.C.           | -         | 30           | 26           | -       | -            | -            | 156                                  | 265          | 11           | -            | 40                | 13           |
| S.C.           | -         | 1            | 5            | -       | -            | -            | 81                                   | 97           | 30           | 55           | 10                | 17           |
| Ga.            | -         | 1            | 5            | -       | -            | -            | 66                                   | 125          | 40           | 87           | 36                | 44           |
| Fla.           | 1         | 2            | 4            | 1       | 1            | 1            | 67                                   | 142          | 51           | 91           | 12                | -            |
| E.S. CENTRAL   | -         | 9            | 19           | -       | -            | -            | 553                                  | 244          | 89           | 114          | 26                | 22           |
| Ky.            | -         | -            | 3            | -       | -            | -            | 34                                   | 35           | 15           | 20           | 3                 | -            |
| Tenn.          | -         | -            | 13           | -       | -            | -            | 18                                   | 112          | -            | 32           | 11                | 9            |
| Ala.           | -         | 9            | 3            | -       | -            | -            | 88                                   | 97           | 52           | 46           | 12                | 13           |
| Miss.          | -         | -            | -            | -       | -            | -            | 413                                  | -            | 22           | 16           | -                 | -            |
| W.S. CENTRAL   | -         | 3            | 16           | -       | 6            | -            | 307                                  | 530          | 36           | 62           | 9                 | 9            |
| Ark.           | -         | -            | -            | -       | -            | -            | 94                                   | 54           | 10           | 4            | -                 | 3            |
| La.            | -         | -            | 1            | -       | -            | -            | 149                                  | 291          | -            | -            | 7                 | -            |
| Okla.          | -         | -            | 12           | -       | -            | -            | 17                                   | 17           | 1            | 6            | 2                 | 6            |
| Tex.           | -         | 3            | 3            | -       | 6            | -            | 47                                   | 168          | 25           | 52           | -                 | -            |
| MOUNTAIN       | 12        | 124          | 21           | 2       | 2            | -            | 28                                   | 34           | 85           | 60           | 7                 | 9            |
| Mont.          | -         | 2            | -            | -       | -            | -            | 1                                    | -            | -            | -            | 3                 | -            |
| Idaho          | 11        | 35           | 5            | -       | -            | -            | -                                    | -            | 2            | 2            | -                 | -            |
| Wyo.           | -         | -            | -            | -       | -            | -            | 2                                    | -            | -            | -            | -                 | 2            |
| Colo.          | -         | -            | 10           | -       | -            | -            | 18                                   | 18           | -            | -            | -                 | -            |
| N. Mex.        | -         | 3            | 2            | -       | -            | -            | 1                                    | -            | 13           | 9            | -                 | -            |
| Ariz.          | -         | 83           | 4            | 2       | 2            | -            | 6                                    | 9            | 37           | 33           | 4                 | 7            |
| Utah           | -         | -            | -            | -       | -            | -            | -                                    | 4            | 3            | -            | -                 | -            |
| Nev.           | 1         | 1            | -            | -       | -            | -            | -                                    | 3            | 30           | 16           | -                 | -            |
| PACIFIC        | 4         | 51           | 95           | -       | 7            | 5            | 1                                    | 127          | 559          | 773          | 15                | 45           |
| Wash.          | 3         | 4            | 8            | -       | -            | -            | 1                                    | 2            | 32           | 33           | -                 | -            |
| Oreg.          | -         | -            | 9            | -       | -            | -            | -                                    | -            | 2            | 14           | -                 | -            |
| Calif.         | 1         | 44           | 75           | -       | 7            | 5            | -                                    | 125          | 499          | 688          | 15                | 32           |
| Alaska         | U         | -            | -            | U       | -            | -            | -                                    | -            | 3            | 11           | -                 | 13           |
| Hawaii         | -         | 3            | 3            | -       | -            | -            | -                                    | -            | 23           | 27           | -                 | -            |
| Guam           | U         | -            | -            | U       | -            | -            | -                                    | 1            | -            | 7            | -                 | -            |
| P.R.           | U         | 1            | -            | U       | -            | -            | 28                                   | 54           | -            | -            | 7                 | 8            |
| V.I.           | U         | -            | -            | U       | -            | -            | -                                    | 1            | -            | -            | -                 | -            |
| Amer. Samoa    | U         | -            | -            | U       | -            | -            | -                                    | -            | 1            | -            | -                 | -            |
| C.N.M.I.       | U         | -            | -            | U       | -            | -            | -                                    | -            | -            | 12           | -                 | -            |

U: Unavailable - : no reported cases

**TABLE III. Deaths in 121 U.S. cities,\* week ending  
February 18, 1995 (7th Week)**

| Reporting Area      | All Causes, By Age (Years) |       |       |       |      |    | P&I† | Total                 | Reporting Area | All Causes, By Age (Years) |       |       |       |      |     | P&I† | Total |
|---------------------|----------------------------|-------|-------|-------|------|----|------|-----------------------|----------------|----------------------------|-------|-------|-------|------|-----|------|-------|
|                     | All Ages                   | ≥65   | 45-64 | 25-44 | 1-24 | <1 |      |                       |                | All Ages                   | ≥65   | 45-64 | 25-44 | 1-24 | <1  |      |       |
| NEW ENGLAND         | 649                        | 465   | 109   | 47    | 12   | 16 | 52   | S. ATLANTIC           | 1,359          | 871                        | 276   | 158   | 35    | 16   | 89  |      |       |
| Boston, Mass.       | 180                        | 125   | 35    | 10    | 4    | 6  | 9    | Atlanta, Ga.          | 200            | 124                        | 44    | 24    | 6     | 2    | 10  |      |       |
| Bridgeport, Conn.   | 30                         | 26    | -     | 4     | -    | -  | 2    | Baltimore, Md.        | 269            | 166                        | 57    | 38    | 8     | -    | 23  |      |       |
| Cambridge, Mass.    | 30                         | 24    | 6     | -     | -    | -  | 2    | Charlotte, N.C.       | 93             | 58                         | 18    | 12    | 3     | 2    | 10  |      |       |
| Fall River, Mass.   | 25                         | 22    | 2     | 1     | -    | -  | -    | Jacksonville, Fla.    | 170            | 109                        | 35    | 19    | 3     | 4    | 14  |      |       |
| Hartford, Conn.     | 80                         | 47    | 16    | 9     | 3    | 5  | 2    | Miami, Fla.           | 110            | 56                         | 30    | 17    | 5     | 2    | 1   |      |       |
| Lowell, Mass.       | 25                         | 16    | 5     | 4     | -    | -  | 3    | Norfolk, Va.          | 60             | 41                         | 8     | 6     | 4     | 1    | 6   |      |       |
| Lynn, Mass.         | 14                         | 7     | 3     | 3     | 1    | -  | 3    | Richmond, Va.         | U              | U                          | U     | U     | U     | U    | U   |      |       |
| New Bedford, Mass.  | 28                         | 19    | 4     | 4     | 1    | -  | 1    | Savannah, Ga.         | 51             | 39                         | 9     | 2     | -     | 1    | 1   |      |       |
| New Haven, Conn.    | 46                         | 34    | 6     | 4     | -    | 2  | 2    | St. Petersburg, Fla.  | 39             | 32                         | 5     | 2     | -     | -    | 1   |      |       |
| Providence, R.I.    | 56                         | 44    | 8     | 4     | -    | -  | 1    | Tampa, Fla.           | 205            | 154                        | 36    | 13    | 2     | -    | 19  |      |       |
| Somerville, Mass.   | 7                          | 4     | 2     | 1     | -    | -  | -    | Washington, D.C.      | 156            | 89                         | 34    | 25    | 4     | 4    | 4   |      |       |
| Springfield, Mass.  | 45                         | 30    | 11    | -     | 2    | 2  | 10   | Wilmington, Del.      | 6              | 3                          | -     | -     | -     | -    | -   |      |       |
| Waterbury, Conn.    | 17                         | 12    | 4     | -     | -    | 1  | 3    | E.S. CENTRAL          | 804            | 525                        | 158   | 72    | 21    | 27   | 73  |      |       |
| Worcester, Mass.    | 66                         | 55    | 7     | 3     | 1    | -  | 14   | Birmingham, Ala.      | 109            | 67                         | 24    | 8     | 5     | 5    | 1   |      |       |
| MID. ATLANTIC       | 2,535                      | 1,702 | 482   | 286   | 32   | 33 | 155  | Chattanooga, Tenn.    | 57             | 34                         | 16    | 5     | 1     | 1    | 3   |      |       |
| Albany, N.Y.        | 60                         | 39    | 10    | 9     | -    | 2  | 9    | Knoxville, Tenn.      | 80             | 59                         | 17    | 2     | 1     | 1    | 11  |      |       |
| Allentown, Pa.      | 20                         | 14    | 4     | 2     | -    | -  | 1    | Lexington, Ky.        | 54             | 37                         | 9     | 5     | 1     | 1    | 4   |      |       |
| Buffalo, N.Y.       | 105                        | 89    | 15    | -     | 1    | -  | 5    | Memphis, Tenn.        | 213            | 138                        | 42    | 19    | 6     | 8    | 24  |      |       |
| Camden, N.J.        | 24                         | 15    | 5     | 1     | 1    | 2  | 1    | Mobile, Ala.          | 57             | 39                         | 9     | 6     | -     | 3    | 2   |      |       |
| Elizabeth, N.J.     | 22                         | 17    | 5     | -     | -    | -  | 2    | Montgomery, Ala.      | 68             | 46                         | 9     | 8     | 1     | 4    | 12  |      |       |
| Erie, Pa.‡          | 43                         | 29    | 12    | 2     | -    | -  | 3    | Nashville, Tenn.      | 166            | 105                        | 32    | 19    | 6     | 4    | 16  |      |       |
| Jersey City, N.J.   | 56                         | 31    | 14    | 9     | 1    | 1  | -    | W.S. CENTRAL          | 1,603          | 1,007                      | 332   | 167   | 58    | 38   | 126 |      |       |
| New York City, N.Y. | 1,541                      | 999   | 302   | 201   | 19   | 20 | 61   | Austin, Tex.          | 66             | 40                         | 9     | 12    | 5     | -    | 5   |      |       |
| Newark, N.J.        | 61                         | 20    | 19    | 20    | 1    | 1  | 4    | Baton Rouge, La.      | 56             | 31                         | 14    | 6     | 1     | 4    | 2   |      |       |
| Paterson, N.J.      | 33                         | 15    | 11    | 5     | -    | 2  | 2    | Corpus Christi, Tex.  | 66             | 52                         | 8     | 2     | 3     | 1    | 4   |      |       |
| Philadelphia, Pa.‡  | -UU                        | -     | -     | -     | -    | -  | -    | Dallas, Tex.          | 216            | 129                        | 53    | 22    | 7     | 5    | 7   |      |       |
| Pittsburgh, Pa.§    | 103                        | 72    | 17    | 11    | 1    | 2  | 13   | El Paso, Tex.         | 63             | 37                         | 16    | 6     | 1     | 3    | 3   |      |       |
| Reading, Pa.        | 15                         | 13    | -     | 1     | 1    | -  | 1    | Ft. Worth, Tex.       | 100            | 65                         | 15    | 8     | 5     | 7    | 12  |      |       |
| Rochester, N.Y.     | 151                        | 126   | 17    | 4     | 2    | 2  | 21   | Houston, Tex.         | 467            | 265                        | 110   | 61    | 22    | 8    | 65  |      |       |
| Schenectady, N.Y.   | 29                         | 19    | 8     | 2     | -    | -  | 3    | Little Rock, Ark.     | 68             | 43                         | 17    | 6     | 1     | 1    | 3   |      |       |
| Scranton, Pa.§      | 38                         | 26    | 9     | 2     | 1    | -  | 5    | New Orleans, La.      | 137            | 85                         | 25    | 15    | 9     | 3    | -   |      |       |
| Syracuse, N.Y.      | 116                        | 88    | 18    | 7     | 3    | -  | 8    | San Antonio, Tex.     | 192            | 130                        | 36    | 21    | 2     | 3    | 13  |      |       |
| Trenton, N.J.       | 62                         | 45    | 10    | 6     | -    | 1  | 9    | Shreveport, La.       | 60             | 43                         | 15    | 2     | -     | -    | 4   |      |       |
| Utica, N.Y.         | 11                         | 9     | 1     | 1     | -    | -  | 2    | Tulsa, Okla.          | 112            | 87                         | 14    | 6     | 2     | 3    | 8   |      |       |
| Yonkers, N.Y.       | 45                         | 36    | 5     | 3     | 1    | -  | 5    | MOUNTAIN              | 866            | 568                        | 157   | 91    | 25    | 24   | 76  |      |       |
| E.N. CENTRAL        | 2,395                      | 1,545 | 466   | 229   | 105  | 50 | 178  | Albuquerque, N.M.     | 87             | 62                         | 16    | 5     | 3     | 1    | 2   |      |       |
| Akron, Ohio         | 49                         | 38    | 8     | 3     | -    | -  | -    | Colo. Springs, Colo.  | 47             | 32                         | 9     | 3     | 2     | 1    | 5   |      |       |
| Canton, Ohio        | 39                         | 29    | 8     | -     | -    | 2  | 8    | Denver, Colo.         | 143            | 91                         | 21    | 19    | 5     | 7    | 12  |      |       |
| Chicago, Ill.       | 479                        | 228   | 88    | 92    | 61   | 10 | 18   | Las Vegas, Nev.       | 171            | 107                        | 35    | 19    | 7     | 3    | 12  |      |       |
| Cincinnati, Ohio    | 230                        | 147   | 60    | 13    | 7    | 3  | 19   | Ogden, Utah           | U              | U                          | U     | U     | U     | U    | U   |      |       |
| Cleveland, Ohio     | 153                        | 87    | 38    | 15    | 5    | 8  | 5    | Phoenix, Ariz.        | 134            | 86                         | 24    | 12    | 5     | 6    | 11  |      |       |
| Columbus, Ohio      | 170                        | 119   | 28    | 16    | 6    | 1  | 23   | Pueblo, Colo.         | 36             | 29                         | 6     | 1     | -     | -    | 6   |      |       |
| Dayton, Ohio        | 107                        | 76    | 26    | 5     | -    | -  | 6    | Salt Lake City, Utah  | 110            | 78                         | 17    | 15    | -     | -    | 16  |      |       |
| Detroit, Mich.      | 218                        | 121   | 62    | 21    | 6    | 8  | 12   | Tucson, Ariz.         | 138            | 83                         | 29    | 17    | 3     | 6    | 12  |      |       |
| Evansville, Ind.    | 52                         | 42    | 8     | 1     | -    | 1  | 4    | PACIFIC               | 1,021          | 696                        | 178   | 97    | 22    | 15   | 104 |      |       |
| Fort Wayne, Ind.    | 56                         | 36    | 11    | 8     | 1    | -  | 1    | Berkeley, Calif.      | 17             | 9                          | 5     | 2     | -     | 1    | -   |      |       |
| Gary, Ind.          | 23                         | 12    | 6     | 4     | 1    | -  | -    | Fresno, Calif.        | 64             | 50                         | 9     | 3     | 2     | -    | 5   |      |       |
| Grand Rapids, Mich. | 71                         | 56    | 9     | 2     | 1    | 3  | 7    | Glendale, Calif.      | U              | U                          | U     | U     | U     | U    | U   |      |       |
| Indianapolis, Ind.  | 214                        | 145   | 39    | 18    | 5    | 7  | 17   | Honolulu, Hawaii      | 79             | 53                         | 14    | 7     | 2     | 2    | 11  |      |       |
| Madison, Wis.       | 72                         | 55    | 7     | 8     | 1    | 1  | 13   | Long Beach, Calif.    | 84             | 49                         | 16    | 16    | 2     | 1    | 18  |      |       |
| Milwaukee, Wis.     | 141                        | 110   | 20    | 8     | 1    | 2  | 14   | Los Angeles, Calif.   | U              | U                          | U     | U     | U     | U    | U   |      |       |
| Peoria, Ill.        | 35                         | 25    | 9     | -     | -    | 1  | 2    | Pasadena, Calif.      | 21             | 16                         | 4     | 1     | -     | -    | 4   |      |       |
| Rockford, Ill.      | 45                         | 30    | 8     | 5     | 2    | -  | 7    | Portland, Oreg.       | 114            | 82                         | 16    | 9     | 4     | 3    | 4   |      |       |
| South Bend, Ind.    | 56                         | 47    | 8     | 1     | -    | -  | 9    | Sacramento, Calif.    | U              | U                          | U     | U     | U     | U    | U   |      |       |
| Toledo, Ohio        | 111                        | 81    | 15    | 6     | 7    | 2  | 13   | San Diego, Calif.     | U              | U                          | U     | U     | U     | U    | U   |      |       |
| Youngstown, Ohio    | 74                         | 61    | 8     | 3     | 1    | 1  | -    | San Francisco, Calif. | 172            | 102                        | 27    | 29    | -     | 3    | 22  |      |       |
| W.N. CENTRAL        | 777                        | 566   | 116   | 49    | 15   | 20 | 58   | San Jose, Calif.      | 179            | 128                        | 33    | 11    | 5     | 1    | 22  |      |       |
| Des Moines, Iowa    | 37                         | 23    | 10    | 1     | 1    | 2  | 1    | Santa Cruz, Calif.    | 25             | 20                         | 4     | 1     | -     | -    | 3   |      |       |
| Duluth, Minn.       | 28                         | 22    | 5     | 1     | -    | -  | 2    | Seattle, Wash.        | 126            | 79                         | 28    | 15    | 3     | 1    | 3   |      |       |
| Kansas City, Kans.  | 36                         | 28    | 5     | 2     | 1    | -  | 1    | Spokane, Wash.        | 45             | 38                         | 1     | -     | 4     | 2    | 8   |      |       |
| Kansas City, Mo.    | 105                        | 69    | 12    | 9     | 2    | 2  | 7    | Tacoma, Wash.         | 95             | 70                         | 21    | 3     | -     | 1    | 4   |      |       |
| Lincoln, Nebr.      | 48                         | 34    | 11    | 2     | -    | 1  | 4    | TOTAL                 | 12,009¶        | 7,945                      | 2,274 | 1,196 | 325   | 239  | 911 |      |       |
| Minneapolis, Minn.  | 224                        | 171   | 29    | 13    | 7    | 4  | 17   |                       |                |                            |       |       |       |      |     |      |       |
| Omaha, Nebr.        | 101                        | 76    | 15    | 5     | 1    | 4  | 7    |                       |                |                            |       |       |       |      |     |      |       |
| St. Louis, Mo.      | 135                        | 100   | 18    | 12    | 2    | 3  | 17   |                       |                |                            |       |       |       |      |     |      |       |
| St. Paul, Minn.     | U                          | U     | U     | U     | U    | U  | U    |                       |                |                            |       |       |       |      |     |      |       |
| Wichita, Kans.      | 63                         | 43    | 11    | 4     | 1    | 4  | 2    |                       |                |                            |       |       |       |      |     |      |       |

\*Mortality data in this table are voluntarily reported from 121 cities in the United States, most of which have populations of 100,000 or more. A death is reported by the place of its occurrence and by the week that the death certificate was filed. Fetal deaths are not included.

†Pneumonia and influenza.

‡Because of changes in reporting methods in these 3 Pennsylvania cities, these numbers are partial counts for the current week. Complete counts will be available in 4 to 6 weeks.

¶Total includes unknown ages.

U: Unavailable - : no reported cases

*Sexual Risk Behaviors — Continued*

**Editorial Note:** During the 1980s, the proportion of adolescents who reported being sexually experienced increased substantially in the United States (6). The findings in this report indicate that, from 1990 through 1993, the proportion of high school students who reported being sexually experienced remained stable, while an increasing percentage of sexually active students used condoms, thereby reducing their risk for unintended pregnancy and STDs, including HIV infection.

The sex, grade, and race/ethnicity findings in this report may assist in identifying groups with higher prevalences of sexual risk behaviors. However, the underlying causes (e.g., education levels, economic factors, or cultural influences) for within-subgroup differences could not be addressed in this study.

In 1991 and 1992, two health outcomes associated with sexual risk behaviors—live births and gonorrhea—also declined. Live-birth rates among 15–19-year-olds decreased in 40 states and the District of Columbia, increased in eight states, and were stable in two states. In addition, rates of gonorrhea decreased among 15–19-year-old males in 45 states and the District of Columbia and among 15–19-year-old females in 41 states and the District of Columbia. Of the 41 areas reporting declines in live-birth rates, 34 also reported declines in gonorrhea rates for both males and females; six other states reported declines for either males or females. Overall, live-birth rates for adolescents decreased significantly (2%) (7), and gonorrhea rates decreased significantly among both adolescent males and adolescent females (20% and 13%, respectively) (8).

The plateau in the proportion of high school students who reported being sexually experienced, the increasing rates of condom use among high school students, and the decreasing rates of live births and gonorrhea among adolescents may reflect, in part, efforts to reduce risks for HIV infection and other STDs among adolescents. For example, since 1986, CDC has collaborated with local, state, and national health and education agencies, national and community-based organizations, and the media to increase development, implementation, and awareness of HIV-prevention education programs for youth.

Despite the decreases in live-birth rates and gonorrhea rates and the increases in condom use, the findings in this report document that many adolescents continue to be at risk for HIV infection, other STDs, and unintended pregnancy because they engage in unprotected sexual intercourse. Efforts to assist all adolescents in delaying first sexual intercourse and increasing condom use among those who do engage in sexual intercourse must be emphasized by health, education, and social service agencies and providers.

The data presented in this report and other data describing changes in rates of pregnancy, abortion, live birth, and gonorrhea among adolescents during the 1980s and 1990s have been summarized by state and for the nation in a new CDC monograph<sup>†</sup>, *Adolescent Health: State of the Nation—Pregnancy, Sexually Transmitted Diseases, and Related Risk Behaviors Among U.S. Adolescents* (8).

*References*

1. Ventura SJ, Taffel SM, Mosher WD, Henshaw S. Trends in pregnancies and pregnancy rates, United States, 1980–88. Hyattsville, Maryland: US Department of Health and Human Services, Public Health Service, CDC, 1992. (Monthly vital statistics report; vol 41, no. 6, suppl).

<sup>†</sup>Single copies of this document are available from CDC's Division of Adolescent and School Health, National Center for Chronic Disease Prevention and Health Promotion, Mailstop K-33, 4770 Buford Highway, NE, Atlanta, GA 30341-3724; telephone (404) 488-5330.

*Sexual Risk Behaviors — Continued*

2. Wasserheit J. Effect of changes in human ecology and behavior on patterns of sexually transmitted diseases, including human immunodeficiency virus infection. *Proc Natl Acad Sci U S A* 1994;91:2430–5.
3. Lindegren ML, Hanson C, Miller K, Byers RH Jr, Onorato I. Epidemiology of human immunodeficiency virus infection in adolescents, United States. *Pediatr Infect Dis J* 1994;13:525–35.
4. Kolbe LJ, Kann L, Collins JL. Overview of the Youth Risk Behavior Surveillance System. *Public Health Rep* 1993;108(suppl 1):2–10.
5. Shah BV, Barnwell BG, Hunt PN, LaVange LM. SUDAAN user's manual, release 5.50. Research Triangle Park, North Carolina: Research Triangle Institute, 1991.
6. CDC. Premarital sexual experience among adolescent women—United States, 1970–1988. *MMWR* 1991;39:929–32.
7. NCHS. Advance report of final natality statistics, 1992. Hyattsville, Maryland: US Department of Health and Human Services, Public Health Service, CDC, 1994. (Monthly vital statistics report; vol 43, no. 5, suppl).
8. CDC. Adolescent health: state of the nation—pregnancy, sexually transmitted diseases, and related risk behaviors among U.S. adolescents. Atlanta: US Department of Health and Human Services, Public Health Service, 1995; DHHS publication no. (CDC)099-4630.

### **Update: Influenza Activity — New York and United States, 1994–95 Season**

Influenza activity in the United States during the current influenza season began in the Northeast, and during late January, spread to other regions of the country. This report describes influenza outbreaks in nursing homes in New York and summarizes national influenza surveillance data from October 2, 1994, through February 11, 1995.

#### **New York**

The first influenza outbreak reported to CDC during the 1994–95 season occurred in a 300-bed skilled-nursing facility in Long Island, New York. On November 30, 1994, eight residents on one 20-bed corridor developed influenza-like illness (ILI) (i.e., fever  $\geq 100$  F [ $\geq 38$  C] and cough). On December 1, nasopharyngeal swab specimens from these eight residents were submitted for rapid antigen testing; within 5 hours after transport to the laboratory, influenza type A was detected by enzyme immunoassay in six specimens. On the evening of December 1, 293 of the 299 residents in the facility each received 100 mg of amantadine hydrochloride as treatment for the eight ill residents and as prophylaxis against influenza A infection for the other 285 residents. Most (285 [95%]) residents had received influenza vaccine before the outbreak. On December 2, as part of the nursing home's contingency plan for influenza outbreaks, amantadine dosages were modified for individual residents based on estimated creatinine clearance (1,2), and prophylaxis was continued for 14 days. Other outbreak-control measures included confining ill residents to their rooms for at least 72 hours after the initiation of amantadine treatment and prophylaxis, confining all residents to their individual units, suspending group activities, and minimizing the assignment of nursing staff to multiple units. The amantadine dosage subsequently was discontinued for five residents and reduced for 13 residents because of side effects (primarily confusion and agitation); for most patients, side effects resolved within 48 hours of dosage adjustment.

During the first 48 hours of amantadine prophylaxis and treatment, six additional residents developed ILI. Of the 14 residents who developed outbreak-associated ILI,

*Influenza Activity — Continued*

five subsequently developed clinical pneumonia. During the 2-week period of amantadine prophylaxis, sporadic cases of febrile respiratory illness occurred in other units of the facility; however, there was no clustering of cases.

Tissue culture of all eight nasopharyngeal specimens yielded influenza type A(H3N2). These isolates were further characterized at CDC; all were antigenically similar to the A/Shangdong/09/93 strain included in the 1994–95 influenza vaccine.

Influenza surveillance in New York state indicated increasing activity beginning in late November 1994. From December 1, 1994, through February 11, 1995, outbreaks associated with influenza type A(H3N2) in 46 other nursing homes were reported to the New York State Department of Health (NYSDOH); of these, 16 were reported from nursing homes in Long Island. For all 16 facilities, influenza type A infection was documented by rapid antigen detection; in 13 facilities, amantadine was administered as an outbreak-control measure. Outbreaks in five other nursing homes were caused by influenza type B and, in two nursing homes, by influenza types A and B. Based on findings of virologic surveillance in New York, influenza has occurred in persons in all age groups during the 1994–95 season. Of the 385 influenza virus isolates reported by laboratories in New York this season, 332 (86%) have been type A.

**United States**

From November 27, 1994, through January 21, 1995, most influenza activity was reported from the Northeast (3). However, during January 22–February 11, regional or widespread activity was reported from states in every region.

Through February 11, World Health Organization collaborating laboratories reported 1282 influenza virus isolates; of these, 923 (72%) isolates have been type A and 359 (28%) have been type B. Of the influenza A isolates that have been subtyped, all have been type A(H3N2).

The proportion of deaths attributable to pneumonia and influenza reported from 121 U.S. cities slightly exceeded the epidemic threshold during six of the 19 weeks from October 2, 1994, through February 11, 1995, but has not exceeded the threshold for any 2 consecutive weeks.

*Reported by: IH Gomolin, MD, Gurwin Jewish Geriatric Center, Commack, New York; HB Leib, MS, RJ Gallo, S Kondracki, G Brady, G Birkhead, MD, DL Morse, MD, State Epidemiologist, New York State Dept of Health. Participating state and territorial epidemiologists and state public health laboratory directors. World Health Organization collaborating laboratories. Sentinel Physicians Influenza Surveillance System of the American Academy of Family Physicians. WHO Collaborating Center for Surveillance, Epidemiology, and Control of Influenza, Div of Viral and Rickettsial Diseases, National Center for Infectious Diseases, CDC.*

**Editorial Note:** Influenza vaccination is 70%–90% effective in preventing ILI in young, healthy adults when the vaccine antigens closely match the circulating influenza virus strains. Because of the decreased immunologic response among the elderly, the vaccine is less effective in preventing the occurrence of ILI in nursing home residents (i.e., 30%–40% effective) (4). However, vaccination of nursing home residents is associated with a substantial (i.e., 50%–60% effectiveness) reduction in the occurrence of serious complications and hospitalization and with preventing death (up to 80% effective); in addition, vaccination reduces the risk for outbreaks in nursing home settings (4,5). Antiviral agents are recommended as an adjunct to vaccination in controlling influenza type A. To control influenza A outbreaks in the nursing home setting, antiviral

*Influenza Activity — Continued*

drugs should be administered to all residents, regardless of influenza vaccination status.

Influenza outbreak-control measures used in the New York nursing home (e.g., rapid influenza A antigen detection and prompt initiation of antiviral treatment and prophylaxis to all residents) were based on recommendations of the Advisory Committee on Immunization Practices (ACIP) (3,6) and CDC and are actively promoted by NYSDOH. Although annual influenza vaccination of nursing home residents is considered a standard of care, use of antiviral agents as an adjunct to vaccination is less common, reflecting, in part, concern about side effects and, until recently, the protracted time required for laboratory confirmation of influenza type A.

The use of amantadine as an adjunct for the control of influenza type A outbreaks in New York during the current season illustrates the usefulness of education about and promotion of the use of antiviral agents and rapid influenza diagnostic methods. In September 1994, NYSDOH mailed information to all health-care facilities in New York urging health-care providers to administer vaccine in accordance with the recommendations of the ACIP, to use rapid antigen-detection testing and viral culture when institutional outbreaks of ILI are initially recognized, and to use amantadine when appropriate. On December 20, the NYSDOH sent an electronic mail message to these institutions to report the rapid identification of influenza type A in the first nursing home outbreak and to reinforce the recommendations for influenza control measures in health-care facilities.

Recommendations of the ACIP for use of amantadine and rimantadine, the two antiviral drugs currently available for treatment and prophylaxis of influenza type A, were published in *MMWR* on December 30, 1994 (4). These recommendations also provide information for assisting health-care providers in selecting the appropriate drug for specific patient groups but do not recommend preferential use of either drug.

As influenza activity continues to increase in the United States, health-care providers should be informed about findings of local, state, and national influenza surveillance and be familiar with methods for rapid viral diagnosis. Updated information about national influenza surveillance is available through the CDC Information System by voice or fax (404) 332-4551. In addition, providers should develop contingency plans to control influenza outbreaks that include the use of rapid diagnosis. When possible, policy decisions regarding use of amantadine and rimantadine should be made before outbreaks occur.

*References*

1. Gomolin IH, Leib HB, Arden NH, Sherman FT. Control of influenza outbreaks in the nursing home: guidelines for diagnosis and management. *J Am Geriatr Soc* 1995;43:71-4.
2. ACIP. Prevention and control of influenza: part II, antiviral agents—recommendations of the Advisory Committee on Immunization Practices (ACIP). *MMWR* 1994;43(no. RR-15).
3. CDC. Update: influenza activity—United States, 1994-95 season. *MMWR* 1995;44:84-6.
4. Arden NH, Patriarca PA, Kendal AP. Experiences in the use and efficacy of inactivated influenza vaccine in nursing homes. In: Kendal AP, Patriarca PA, eds. *Options for the control of influenza*. New York: Alan R. Liss, 1986:155-68.
5. Patriarca PA, Weber JA, Parker RA, et al. Efficacy of influenza vaccine in nursing homes: reduction in illness and complications during an influenza A(H3N2) epidemic. *JAMA* 1985;253:1136-9.
6. ACIP. Prevention and control of influenza: part I, vaccines—recommendations of the Advisory Committee on Immunization Practices (ACIP). *MMWR* 1994;43(no. RR-9).

Notice to Readers**Availability of Draft Recommendations  
for HIV Counseling and Testing for Pregnant Women**

CDC is requesting public review and comment on the draft document *U.S. Public Health Service Recommendations for HIV Counseling and Testing for Pregnant Women*. This document is available from the CDC National AIDS Clearinghouse, P.O. Box 6003, Rockville, MD 20849-6003; telephone (800) 458-5231 or (301) 217-0023. Written comments must be received by April 10, 1995, and should be mailed to CDC's Technical Information Activity, Division of HIV/AIDS, Mailstop E-49, 1600 Clifton Road, NE, Atlanta, GA 30333; fax (404) 639-2007.

**Erratum: Vol. 44, No. 5**

In the article "Update: AIDS Among Women—United States, 1994," on page 81, the sentence beginning on the fourth line was incorrect. The sentence should read, "Women with AIDS reported in 1994 represented 24% of the cumulative total of 58,428 cases among women."

The *Morbidity and Mortality Weekly Report (MMWR)* Series is prepared by the Centers for Disease Control and Prevention (CDC) and is available on a paid subscription basis from the Superintendent of Documents, U.S. Government Printing Office, Washington, DC 20402; telephone (202) 783-3238.

The data in the weekly *MMWR* are provisional, based on weekly reports to CDC by state health departments. The reporting week concludes at close of business on Friday; compiled data on a national basis are officially released to the public on the succeeding Friday. Inquiries about the *MMWR* Series, including material to be considered for publication, should be directed to: Editor, *MMWR* Series, Mailstop C-08, Centers for Disease Control and Prevention, Atlanta, GA 30333; telephone (404) 332-4555.

All material in the *MMWR* Series is in the public domain and may be used and reprinted without special permission; citation as to source, however, is appreciated.

Director, Centers for Disease Control and Prevention  
David Satcher, M.D., Ph.D.

Deputy Director, Centers for Disease Control  
and Prevention  
Claire V. Broome, M.D.

Director, Epidemiology Program Office  
Stephen B. Thacker, M.D., M.Sc.

Editor, *MMWR* Series

Richard A. Goodman, M.D., M.P.H.

Managing Editor, *MMWR* (weekly)  
Karen L. Foster, M.A.

Writers-Editors, *MMWR* (weekly)

David C. Johnson

Patricia A. McGee

Darlene D. Rumph-Person

Caran R. Wilbanks

---

☆U.S. Government Printing Office: 1995-633-175/05055 Region IV

---