

**US Army Corps of Engineers**  
New England District

**REVISIONS:**

NO.	DATE	DESCRIPTION
1	02/21/07	Initial Issue

**GENERAL NOTES:**

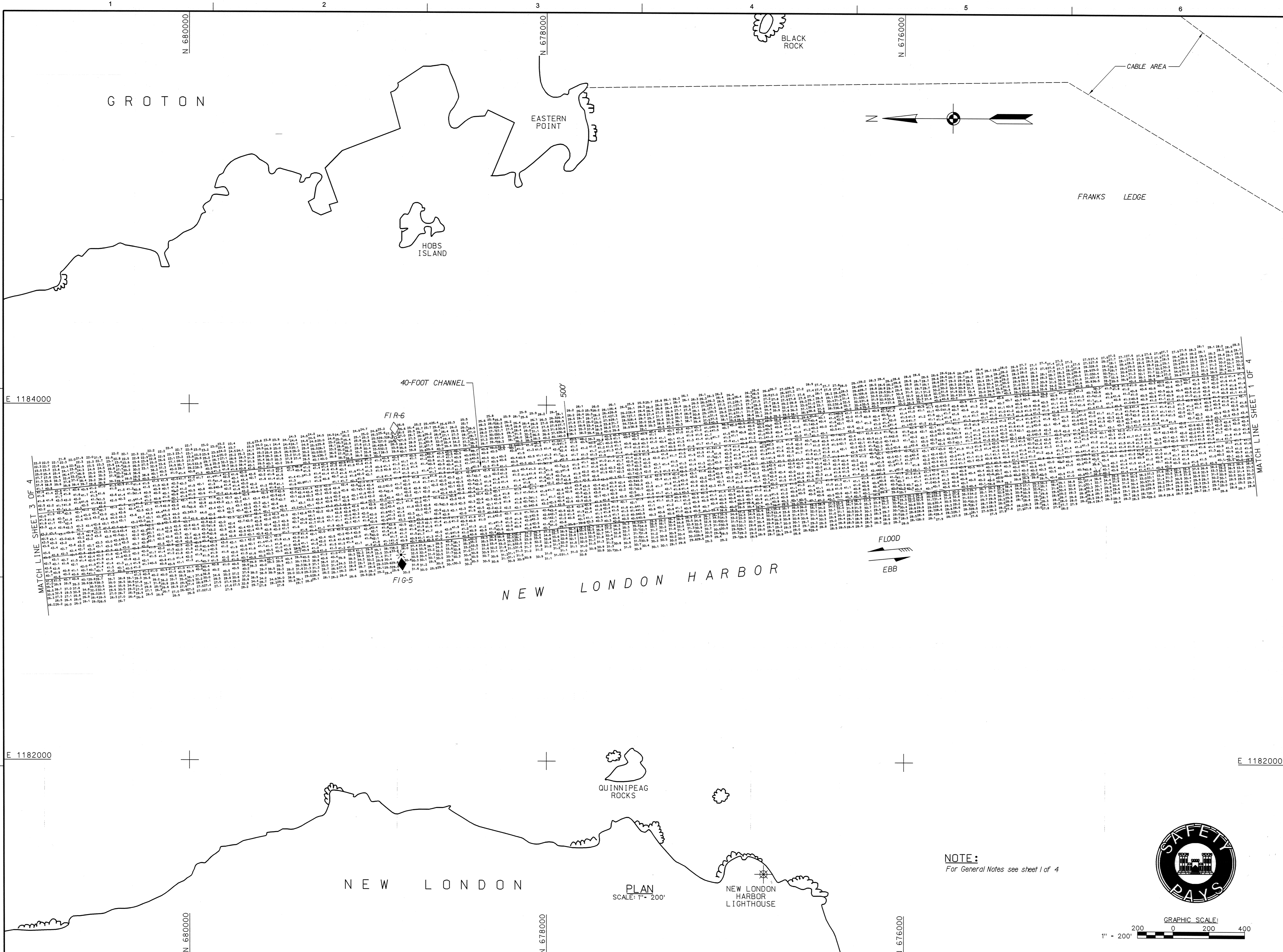
1. Soundings are in feet and tenths and refer to the plane of Mean Lower Low Water (MLLW) 1983-2001 Tidal Epoch.
2. Topography shown is from previous surveys and/or NOAA Chart No. 13213. All topography, including storeline, bridges, piers, etc., is located approximate unless otherwise noted and should be used as a general reference only.
3. Bench Mark Data: BM 1490 P (1995) is a standard NOS Tidal Bench Mark disk, stamped "1490 P 1995", set in the concrete foundation located in the parking area on the State of Connecticut Bureau of Aviation and Ports property, 144.0 feet (43.89 m) south-southwest of Light Pole number 14, 17.1 feet (5.21 m) east of the west corner of the Aviation and Ports Building, and 1.0 foot (0.30 m) west of east side of the garage door frame. Elevation is 12.87 feet above MLLW.
4. Coordinates shown are based on the Lambert Grid System for the State of Connecticut (Zone 0600) and NAD 1983.
5. Survey was performed using an Odom MK3 echotrac echosounder. Vessel positioning was obtained utilizing a Leica 1200 GPS System. An RTK base station was set up on TBM State Pier (2007).
6. The sounding information shown on these maps represents the SHOALEST soundings of those obtained from hydrographic surveys conducted from February to July 2007.
7. The sounding information depicted on these maps should NOT be used to determine volumes. Volumes are determined from more sounding information than shown. Additional sounding information is available upon request.
8. The information depicted on these maps represents the results of surveys made on the dates indicated, and can only be considered as indicating the general conditions existing at that time.
9. Field Book: R&H 4468

Depthsounder Rolls: 07-887/01-07  
23, 36 and 40-foot depth contours shown thus: - - - - -  
Surveyed by: Robert MacGovern and Crew

**SAFETY RAYS**

**GRAPHIC SCALE:**  
1" = 200'

**SHEET IDENTIFICATION**  
V-101  
SHEET 1 OF 4



**US Army Corps of Engineers**  
New England District

DATE: 1/27/09  
DRAWN BY: J. J. [unreadable]  
CHECKED BY: [unreadable]  
DESIGNED BY: [unreadable]  
PROJECT NAME: NEW LONDON HARBOR AND GROTON, CONNECTICUT CONDITION SURVEY  
DRAWING CODE: [unreadable]  
FILE NAME: [unreadable]  
SCALE: 1" = 200'

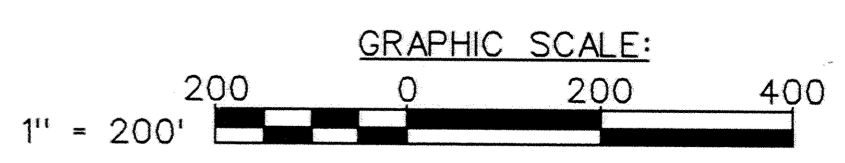
**NEW LONDON HARBOR AND GROTON, CONNECTICUT**  
CONDITION SURVEY  
23, 36 AND 40-FOOT CHANNELS  
23 AND 40-FOOT ANCHORAGES  
23-FOOT MANEUVERING AREA

SHEET IDENTIFICATION  
**V-102**  
SHEET 2 OF 4

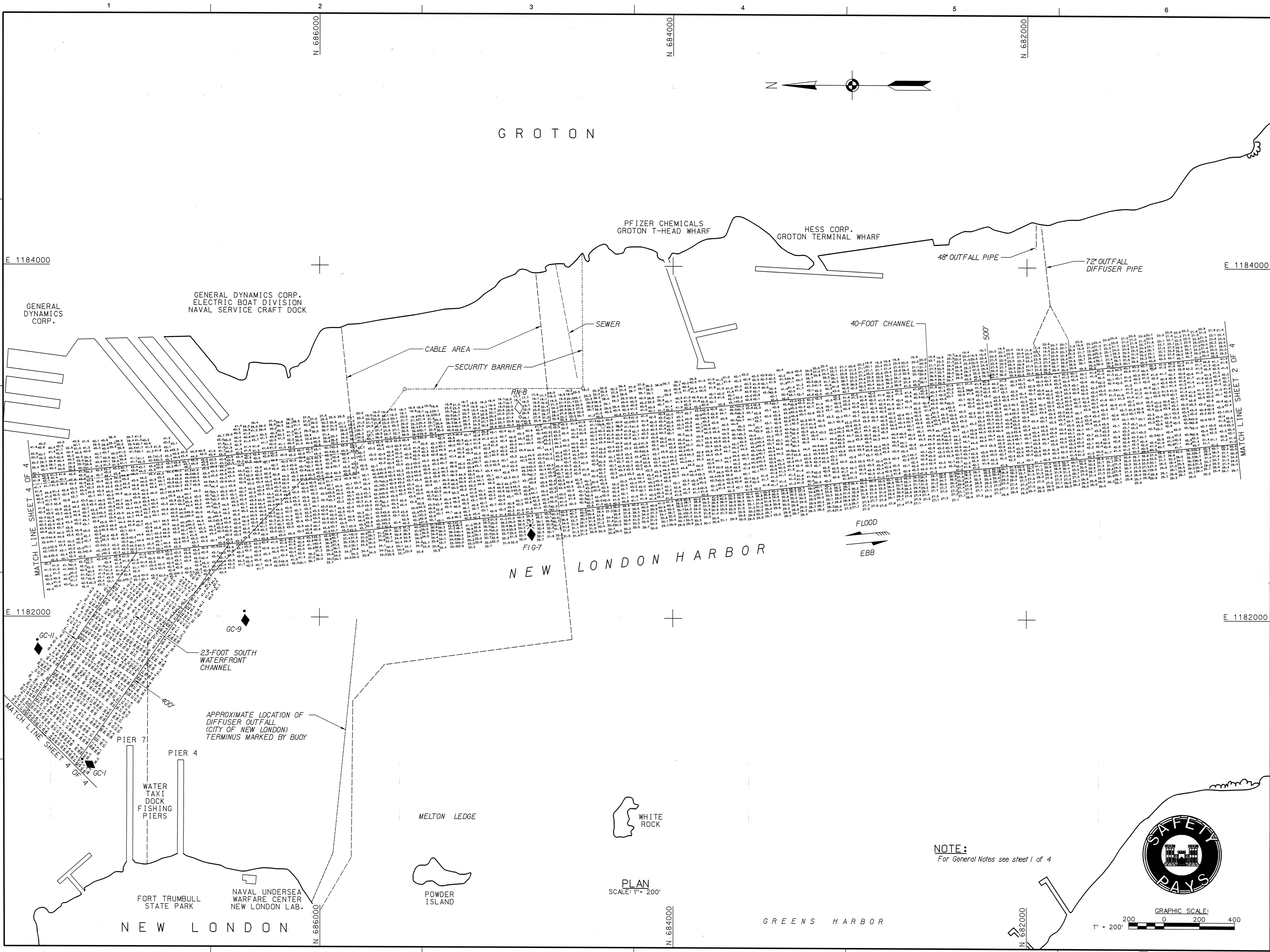
SCANNED RECORD  
JAN. 2008



**NOTE:**  
For General Notes see sheet 1 of 4



PLAN  
SCALE: 1" = 200'



**US Army Corps of Engineers**  
New England District

DATE	APPROVAL	DESCRIPTION

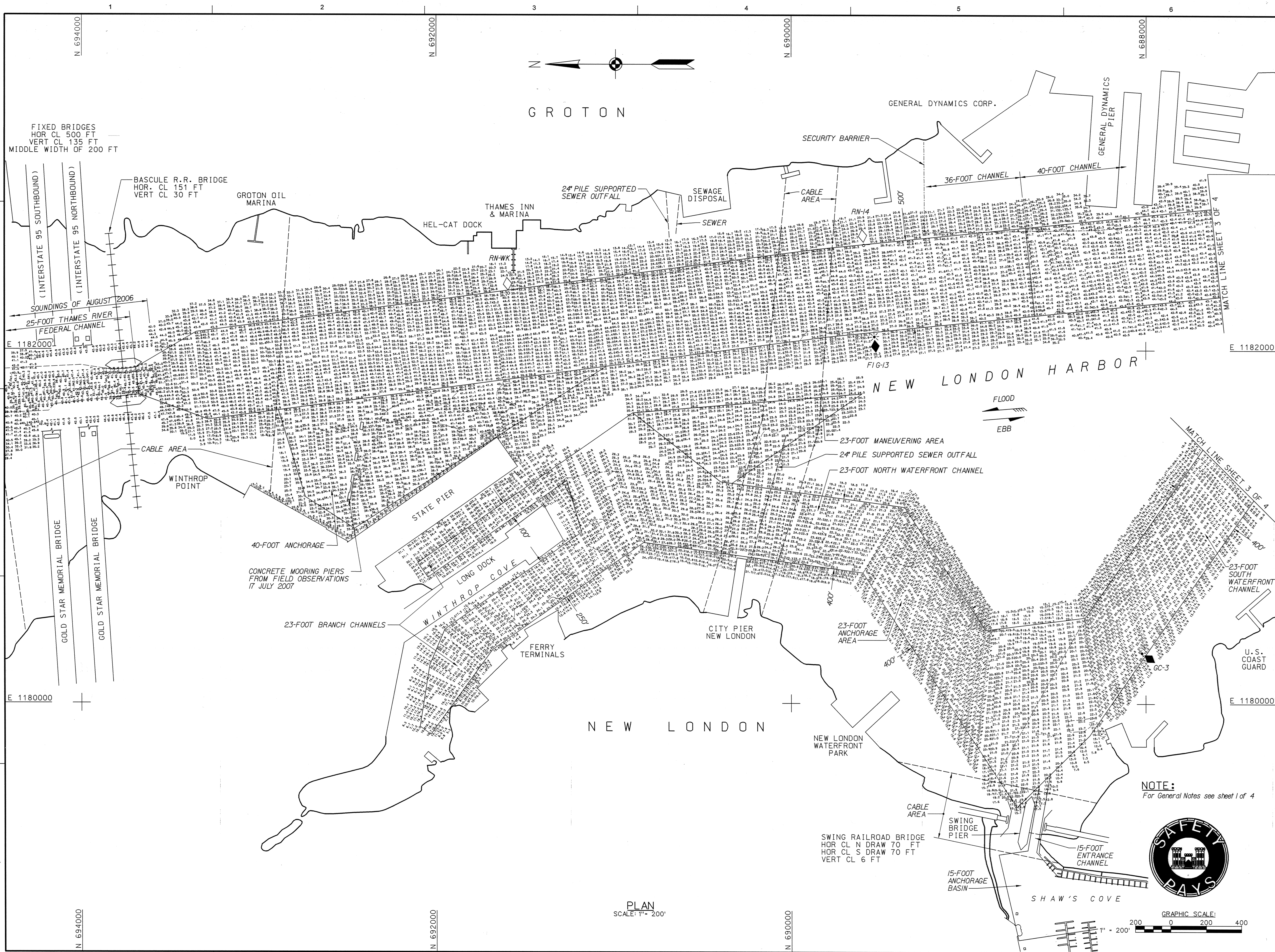
REVIEWED BY: [Signature]  
 DATE: 1/13/08  
 DRAWN BY: [Signature]  
 CHECKED BY: [Signature]  
 SUBMITTED BY: [Signature]  
 PROJECT: NEW LONDON HARBOR AND GROTON CONNECTICUT CONDITION SURVEY  
 DRAWING CODE: 23-36 AND 40-FOOT CHANNELS, 23 AND 40-FOOT ANCHORAGES, 23-FOOT MANEUVERING AREA  
 SHEET IDENTIFICATION: V-103  
 SHEET 3 OF 4

SCANNED RECORD  
 JAN 2008

**NOTE:**  
For General Notes see sheet 1 of 4



PLAN  
SCALE: 1" = 200'



DATE	APPRO.	DESCRIPTION

DATE	APPRO.	MARK	DESCRIPTION

DATE: 1/27/08  
 DRAWN BY: [Signature]  
 CHECKED BY: [Signature]  
 SUBMITTED BY: [Signature]  
 REVIEWED BY: [Signature]  
 FILE NAME: [Text]  
 SIZE: [Text]  
 SHEET: 4 OF 4

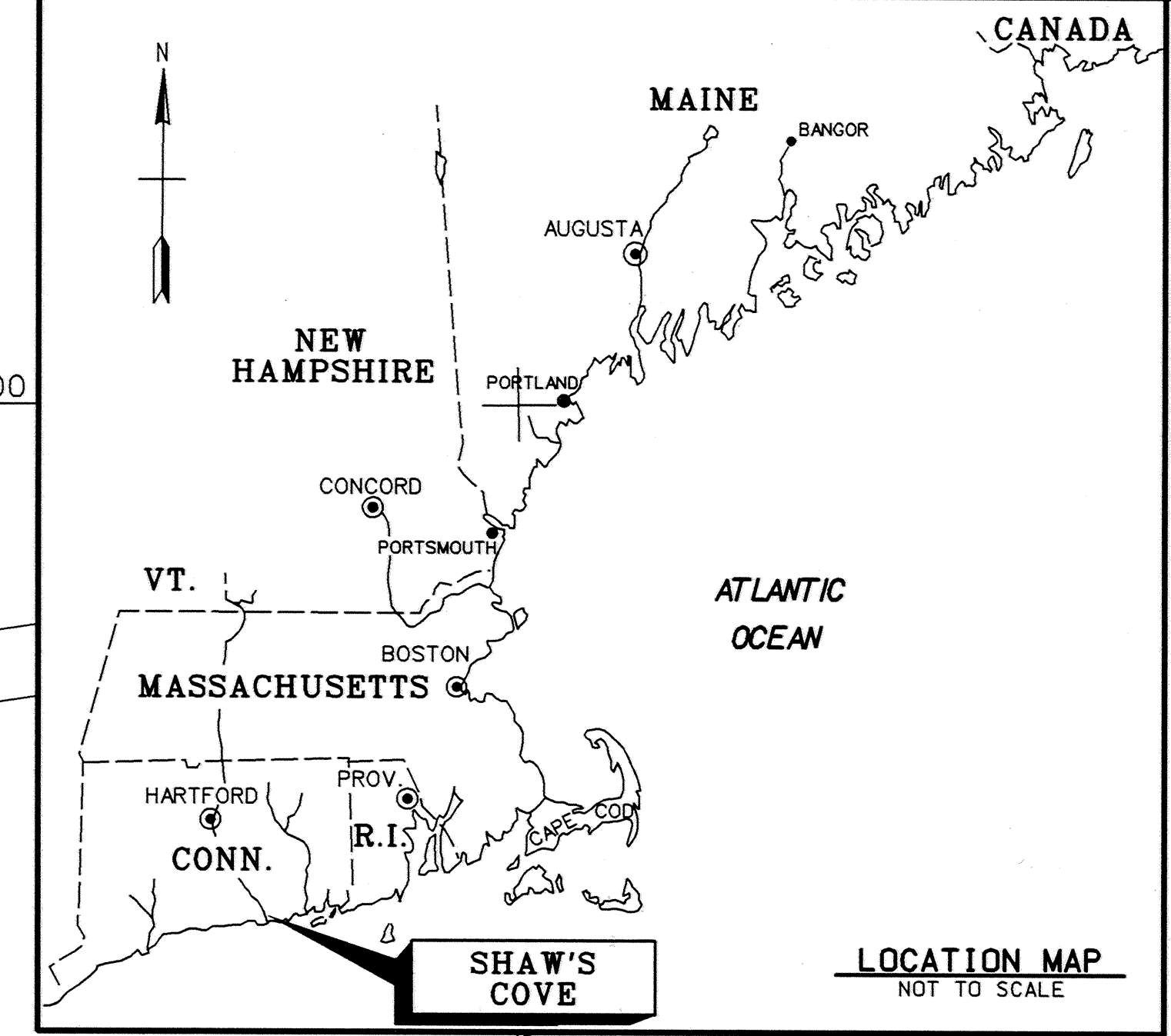
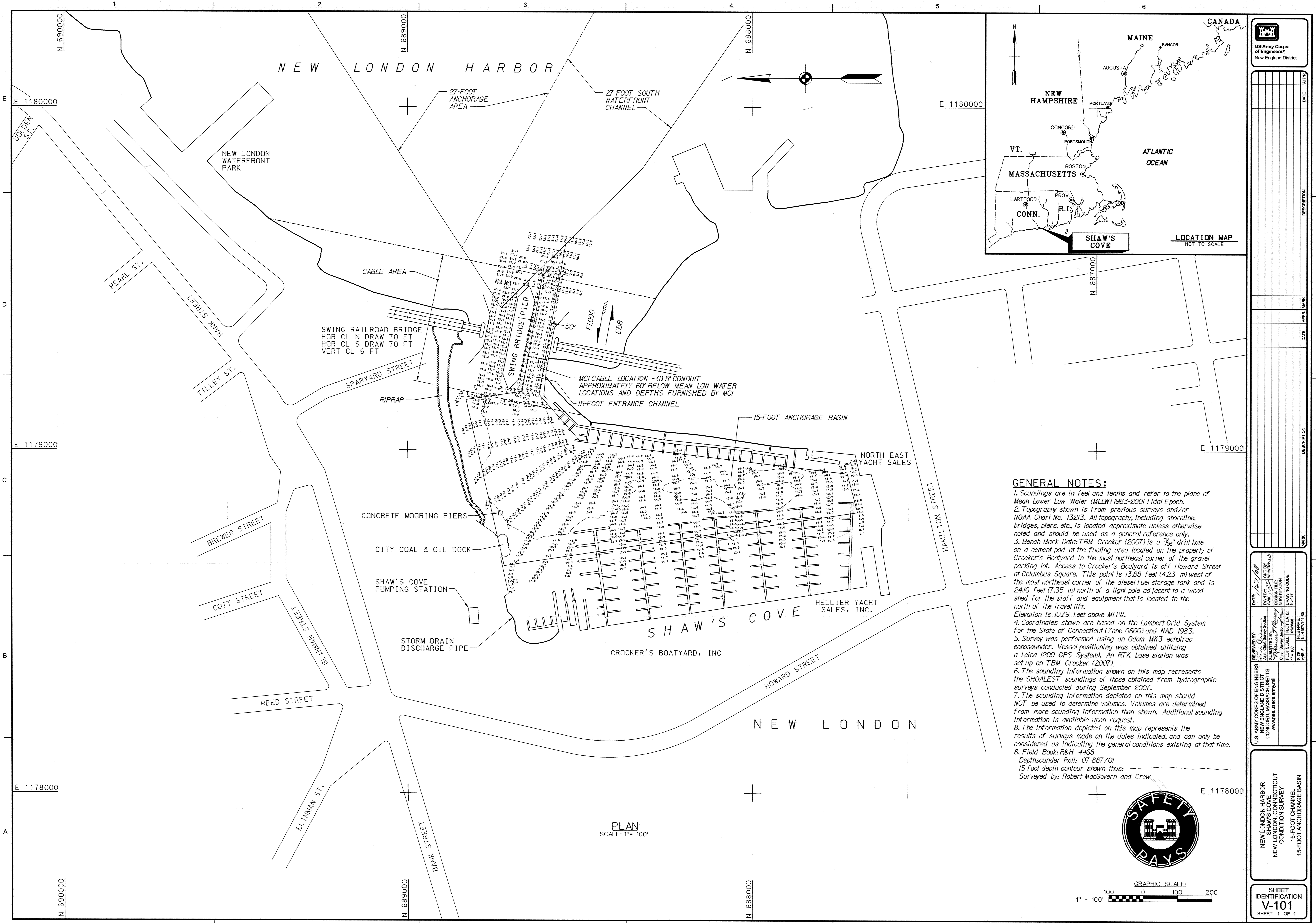
NOTE:  
 For General Notes see sheet 1 of 4

SAFETY PAYS

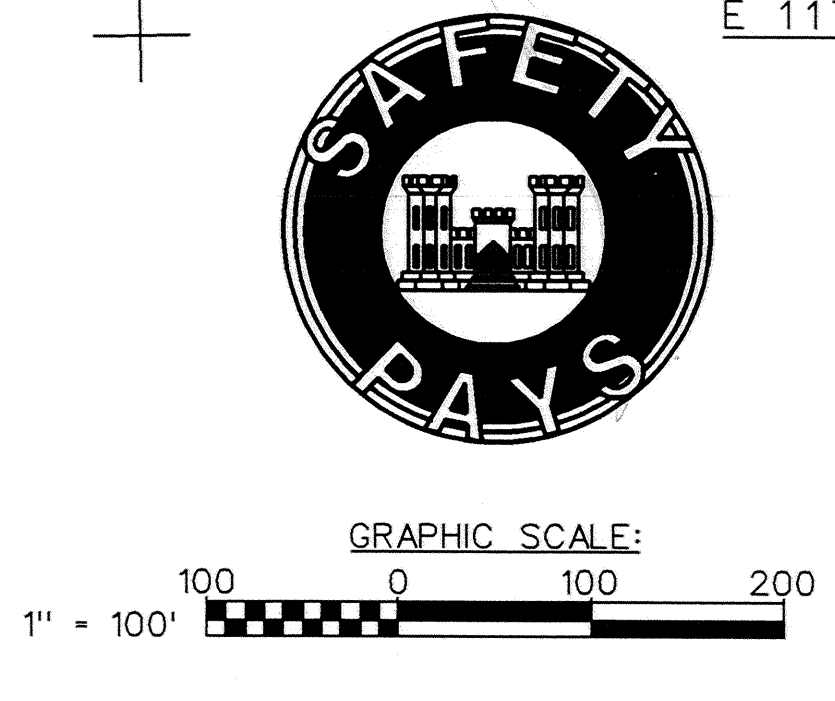
NEW LONDON HARBOR  
 NEW LONDON AND GROTON, CONNECTICUT  
 CONDITION SURVEY  
 23, 36 AND 40-FOOT CHANNELS  
 23 AND 40-FOOT ANCHORAGES  
 25-FOOT MANEUVERING AREA

SHEET IDENTIFICATION  
**V-104**  
 SHEET 4 OF 4

SCANNED RECORD  
 JAN-2008



- GENERAL NOTES:**
1. Soundings are in feet and tenths and refer to the plane of Mean Lower Low Water (MLLW) 1983-2001 Tidal Epoch.
  2. Topography shown is from previous surveys and/or NOAA Chart No. 13213. All topography, including shoreline, bridges, piers, etc., is located approximate unless otherwise noted and should be used as a general reference only.
  3. Bench Mark Data: TBM Crocker (2007) is a 3/16" drill hole on a cement pad at the fuelling area located on the property of Crocker's Boatyard in the most northeast corner of the gravel parking lot. Access to Crocker's Boatyard is off Howard Street at Columbus Square. This point is 13.88 feet (4.23 m) west of the most northeast corner of the diesel fuel storage tank and is 2410 feet (7.35 m) north of a light pole adjacent to a wood shed for the staff and equipment that is located to the north of the travel lift. Elevation is 10.79 feet above MLLW.
  4. Coordinates shown are based on the Lambert Grid System for the State of Connecticut (Zone 0600) and NAD 1983.
  5. Survey was performed using an Odom MK3 echotrac echosounder. Vessel positioning was obtained utilizing a Leica I200 GPS System. An RTK base station was set up on TBM Crocker (2007).
  6. The sounding information shown on this map represents the SHOALEST soundings of those obtained from hydrographic surveys conducted during September 2007.
  7. The sounding information depicted on this map should NOT be used to determine volumes. Volumes are determined from more sounding information than shown. Additional sounding information is available upon request.
  8. The information depicted on this map represents the results of surveys made on the dates indicated, and can only be considered as indicating the general conditions existing at that time.
  8. Field Book: R&H 4468  
 Dethsounder Roll: 07-887/01  
 15-foot depth contour shown thus:  
 Surveyed by: Robert MacGovern and Crew.



**US Army Corps of Engineers**  
New England District

DATE	APPR.	DESCRIPTION

---

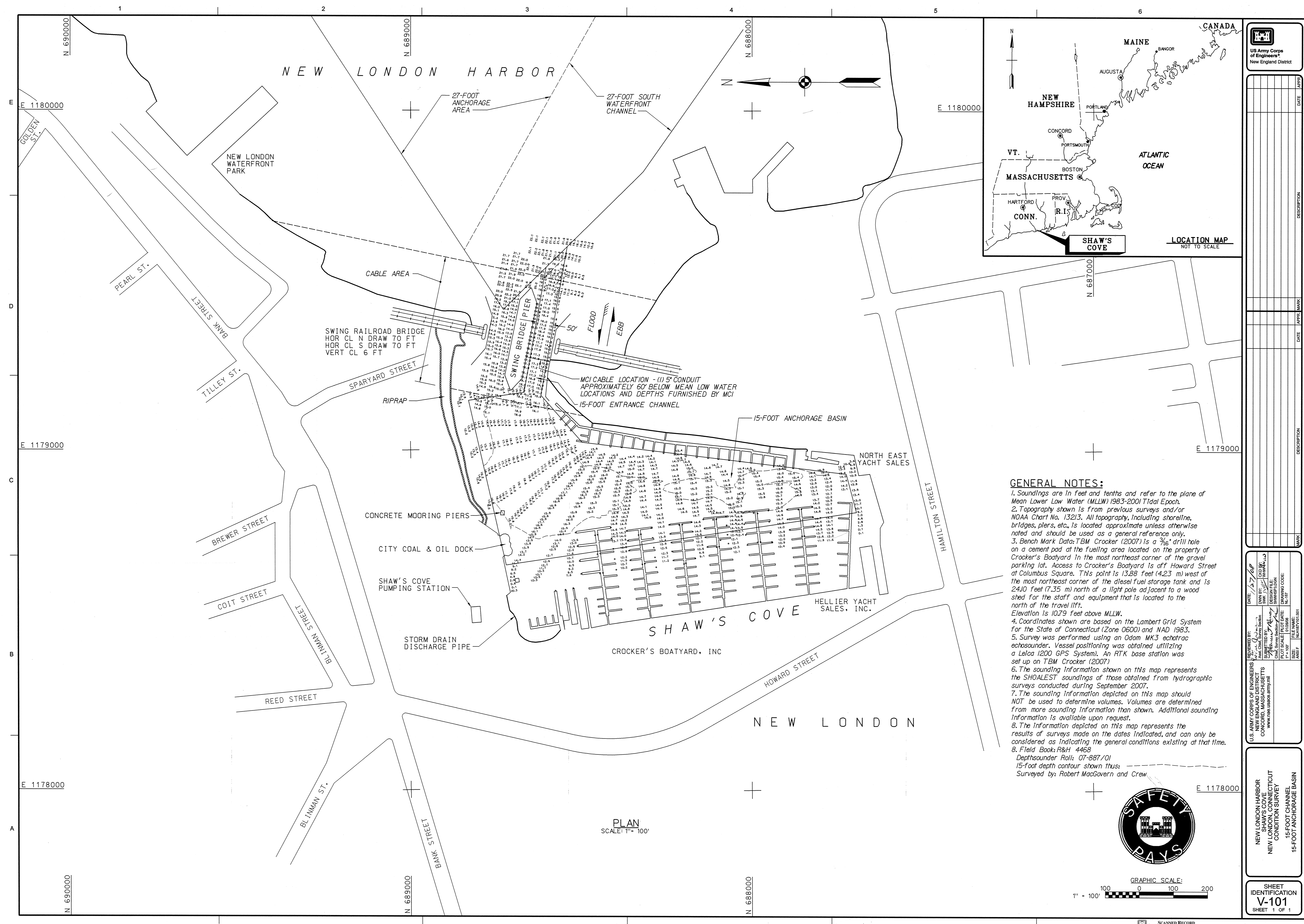
REVIEWED BY: *[Signature]*  
 DATE: 1/27/08  
 DESIGNED BY: *[Signature]*  
 CHECKED BY: *[Signature]*  
 PLOT SCALE: 1" = 100'  
 PLOT DATE: 1/27/08  
 FILE NAME: N1807V101.DWG  
 SIZE: 1487K

---

NEW LONDON HARBOR  
 SHAW'S COVE  
 NEW LONDON, CONNECTICUT  
 CONDITION SURVEY  
 15-FOOT CHANNEL  
 15-FOOT ANCHORAGE BASIN

---

**SHEET IDENTIFICATION**  
**V-101**  
 SHEET 1 OF 1

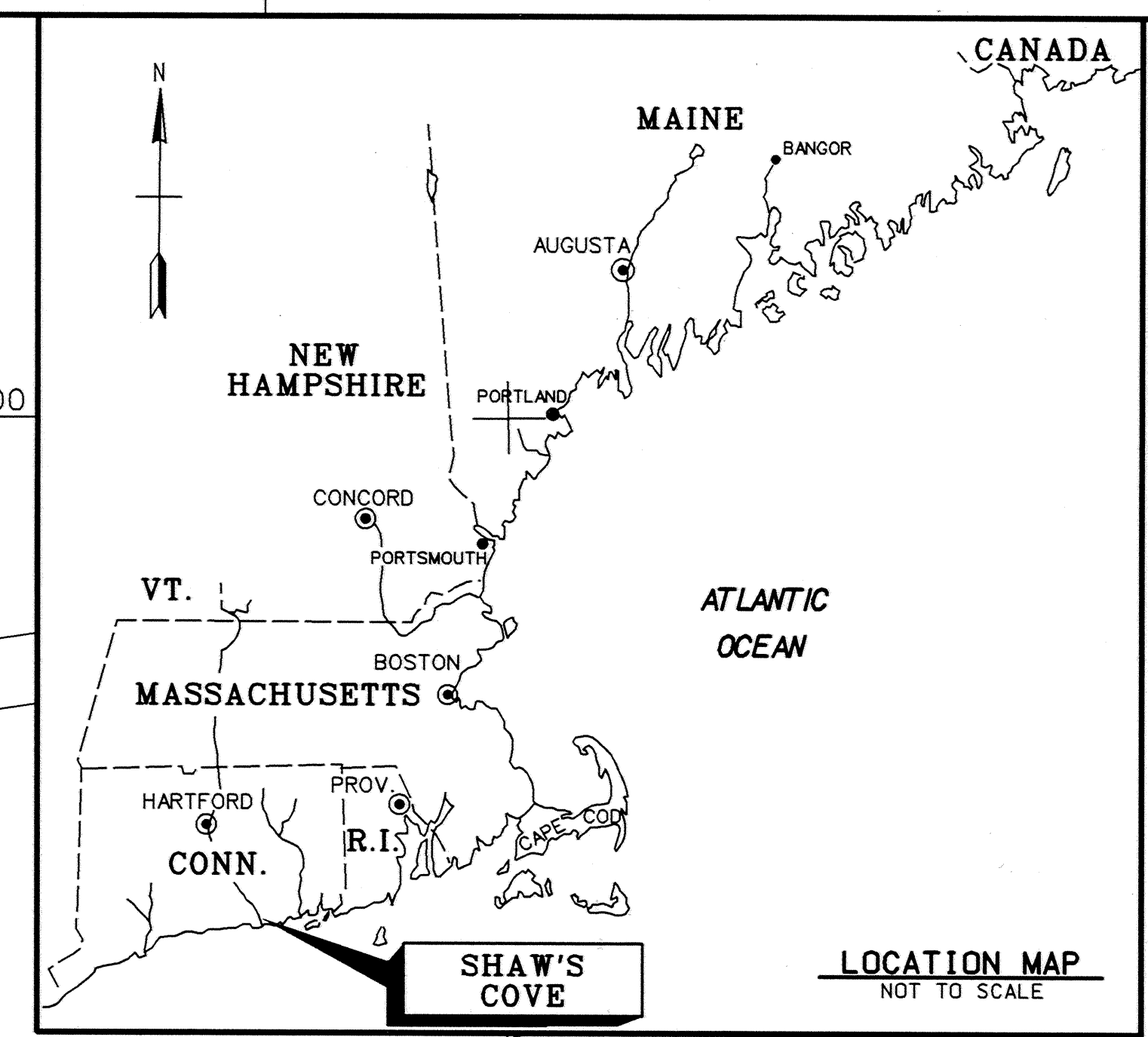


PLAN  
SCALE: 1" = 100'

GRAPHIC SCALE:  
1" = 100' [0, 100, 200 scale]

**GENERAL NOTES:**

1. Soundings are in feet and tenths and refer to the plane of Mean Lower Low Water (MLLW) 1983-2001 Tidal Epoch.
2. Topography shown is from previous surveys and/or NOAA Chart No. 13213. All topography, including shoreline, bridges, piers, etc., is located approximate unless otherwise noted and should be used as a general reference only.
3. Bench Mark Data: TBM Crocker (2007) is a 3/16" drill hole on a cement pad at the fuelling area located on the property of Crocker's Boatyard in the most northeast corner of the gravel parking lot. Access to Crocker's Boatyard is off Howard Street at Columbus Square. This point is 13.88 feet (4.23 m) west of the most northeast corner of the diesel fuel storage tank and is 240 feet (7.35 m) north of a light pole adjacent to a wood shed for the staff and equipment that is located to the north of the travel lift. Elevation is 10.79 feet above MLLW.
4. Coordinates shown are based on the Lambert Grid System for the State of Connecticut (Zone 0600) and NAD 1983.
5. Survey was performed using an Odom MK3 echotrac echosounder. Vessel positioning was obtained utilizing a Leica 1200 GPS System. An RTK base station was set up on TBM Crocker (2007)
6. The sounding information shown on this map represents the SHOALEST soundings of those obtained from hydrographic surveys conducted during September 2007.
7. The sounding information depicted on this map should NOT be used to determine volumes. Volumes are determined from more sounding information than shown. Additional sounding information is available upon request.
8. The information depicted on this map represents the results of surveys made on the dates indicated, and can only be considered as indicating the general conditions existing at that time.
8. Field Book: R&H 4468  
Depthounder Roll: 07-887/01  
15-foot depth contour shown thus: Surveyed by: Robert MacGovern and Crew.



US Army Corps of Engineers New England District

DATE	APPR. MARK	DESCRIPTION

REVIEWED BY: [Signature] DATE: 1/27/08  
 DESIGNED BY: [Signature] DATE: 1/27/08  
 PLOTTED BY: [Signature] DATE: 1/27/08  
 FILE NAME: I:\NHPRV\1301  
 SIZE: 14.8 MB

NEW LONDON HARBOR SHAW'S COVE NEW LONDON, CONNECTICUT CONDITION SURVEY 15-FOOT CHANNEL 16-FOOT ANCHORAGE BASIN

SHEET IDENTIFICATION  
**V-101**  
SHEET 1 OF 1