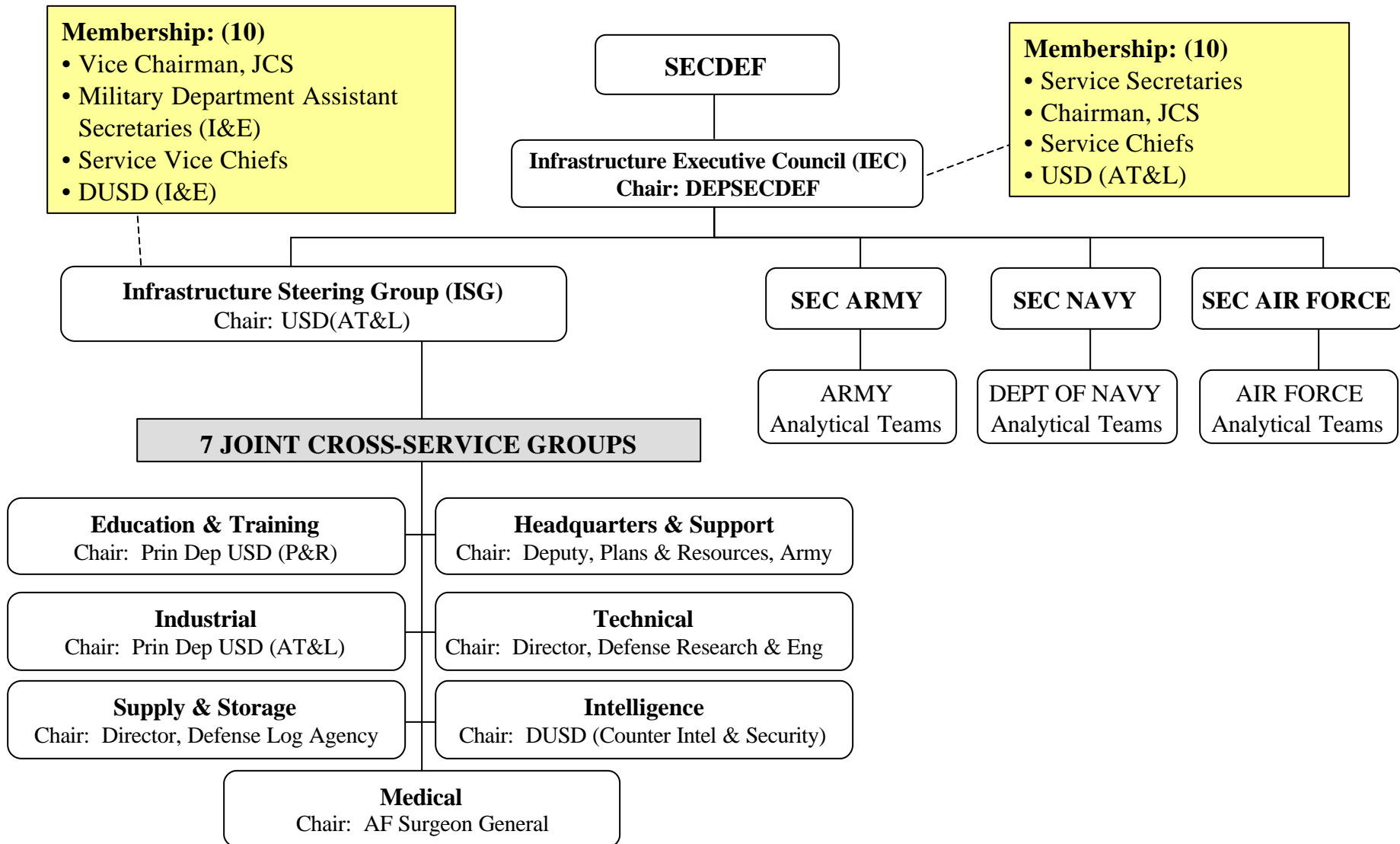




BRAC 2005 Leadership & Organization





Comparing BRAC Rounds

	Major Base Closures	Major Base Realignments	Minor Closures and Realignments	Costs (TY \$B)	Annual Recurring Savings (FY05 \$B)
BRAC 88	16	4	23	2.7	0.9
BRAC 91	26	17	32	5.2	2.0
BRAC 93	28	12	123	7.6	2.6
BRAC 95	27	22	57	6.5	1.7
Total	97	55	235	22.0	7.3
BRAC 05	33	29	775	24.4	5.5



Major Closures: Installations Recommended for Closure with Plant Replacement Value Exceeding \$100M (33 Total)

Army (14)

- Riverbank Army Ammunition Plant, CA
- Fort Gillem, GA
- Fort McPherson, GA
- Newport Chemical Depot, IN
- Kansas Army Ammunition Plant, KS
- Selfridge Army Activity, MI
- Mississippi Army Ammunition Plant, MS
- Fort Monmouth, NJ
- Hawthorne Army Depot, NV
- Umatilla Chemical Depot, OR
- Lone Star Army Ammunition Plant, TX
- Red River Army Depot, TX
- Deseret Chemical Depot, UT
- Fort Monroe, VA

Department of Navy (9)

- Naval Support Activity, Corona, CA
- Naval Weapons Station Seal Beach
Concord Detachment, CA

- Submarine Base New London, CT
- Naval Air Station Atlanta, GA
- Naval Support Activity New Orleans, LA
- Naval Shipyard Portsmouth, ME
- Naval Station Pascagoula, MS
- Naval Air Station Willow Grove, PA
- Naval Station Ingleside, TX

Air Force (10)

- Kulis Air Guard Station, AK
- Onizuka Air Force Station, CA
- Otis Air National Guard Base, MA
- W. K. Kellogg Airport Air Guard Station, MI
- Cannon AFB, NM
- Niagara Falls International Airport Air Guard Station, NY
- Pittsburgh International Airport Air Reserve Station, PA
- Ellsworth AFB, SD
- Brooks City Base, TX
- General Mitchell ARS, WI



Major Realignment: Installations losing 400 + Net Total Military and Civilian Personnel (29 Total)

Army (5)

- Walter Reed National Military Medical Center (at Bethesda), DC
- Rock Island Arsenal , IL
- Ft Knox, KY
- Army Reserve Personnel Center, St Louis, MO
- Ft Eustis, VA

Department of Navy (11)

- MCLB Barstow, CA
- Naval Base Ventura City, CA
- Naval Base Coronado, CA
- Naval Medical Center San Diego, CA
- Naval District Washington, DC
- NAS Pensacola, FL
- NS Great Lakes, IL
- NSA Crane, IN
- NAS Brunswick, ME
- NAS Corpus Christi, TX
- Naval Medical Center Portsmouth, VA

Air Force (10)

- Eielson AFB, AK
- Elmendorf AFB, AK
- Maxwell AFB, AL
- Mountain Home AFB, ID
- Pope AFB, NC
- Grand Forks AFB, ND
- Portland IAP AGS, OR
- Lackland AFB, TX
- Sheppard AFB, TX
- McChord AFB, WA

Defense Agencies / Multiple Services (3)

- NCR Leased locations, DC
- DFAS Cleveland, OH
- DFAS Arlington, VA



Major Gains: Installations Gaining 400 + Total Military and Civilian Personnel (49 Total)

Army (18)

- Anniston Depot, AL
- Ft Rucker, AL
- Redstone Arsenal, AL
- Ft Carson, CO
- Ft Benning, GA
- Ft Riley, KS
- Aberdeen Proving Ground, MD
- Ft Meade, MD
- Detroit Arsenal, MI
- Ft Bragg, NC
- Picatinny Arsenal, NJ
- Ft Sill, OK
- Letterkenny Depot, PA
- Ft Jackson, SC
- Ft Bliss, TX
- Ft Sam Houston, TX
- Ft Belvoir, VA
- Ft Lee, VA

Navy (14)

- NAWS China Lake, CA
- NS San Diego, CA
- NAS Jacksonville, FL
- NS Mayport, FL
- SUBBASE Kingsbay, GA
- NAS New Orleans, LA
- NS Newport, RI
- NSA Mid-South, TN
- Arlington Hall, VA
- NS Norfolk, VA
- NSA Norfolk, VA
- NSY Norfolk, VA
- MCLB Quantico, VA
- NS Bremerton, WA

Air Force (14)

- Little Rock AFB, AR
- Peterson AFB, CO
- Eglin AFB, FL
- Moody AFB, GA
- Scott AFB, IL
- McConnell AFB, KS
- Hanscom AFB, MA
- Andrews AFB, MD
- McGuire AFB, NJ
- Nellis AFB, NV
- Wright-Patterson AFB, OH
- McEntire AGS, SC
- Shaw AFB, SC
- Langley AFB, VA

Defense Agencies / Multiple Services (3)

- DFAS Indianapolis, IN
- NMC Bethesda, MD
- DSC Columbus, OH

<http://www.defenselink.mil/brac/>

UNITED STATES DEPARTMENT OF DEFENSE

Threat Advisory **ELEVATED**

SEARCH

May 12, 2005 War on Terror Transformation News Products Press Resources Images Websites Contact Us



BRAC Base Realignment and Closure 2005

Home
May 10, 2005
Briefing Transcript
Background Slides
Definitions

THE BIG PICTURE
Special Office Aids Affected Communities
WASHINGTON, May 11, 2005 – When a Defense Department installation closes, the department doesn't just pull chocks and fly off. The department's Office of Economic Adjustment works with communities to help them through the base closing process and help them transform.
Story | Transcript | Slides

Commissioners Take Oath of Office
WASHINGTON – The 2005 Base Realignment and Closure Commission began its work here May 3, 2005. Commission Chairman Anthony J. Principi, former secretary of veterans affairs, administered the oath of office to the eight