

Tupper seminar

Tuesday, July 23, noon seminar speaker will be Eldredge Bermingham, STRI
An informal presentation of humbug damselfish (*Dasycyllus*) biogeography and mating system evolution, including some off-the-cuff comments on marine speciation and coral reef community assembly

Bambi seminar

Thursday, July 25, Bambi seminar speaker will be Laurence Gilbert
Title to be announced

Arrivals

Joseph Yavitt, Cornell University, Jul 21 - Aug 3, to study nutrient augmentation, at Gigante.

Jean-Philippe Puyravaud, IT Power, India, Jul 21-June 30, 2003, to collaborate with Bill Laurance, in Gamboa.

Ian Couzin, Princeton University, Jul 21 - Aug 7, to work in the automated telemetry project, on BCI.

Roxana Yockteng, University of Paris, France, Jul 22 - Aug 5, to work on a comparative approach to study the evolution of endemism in neotropical plants: *Passiflora* (*Passifloraceae*) example, at Colón and Bocas del Toro.

Ranjit Daniels, India, Jul 22 - 29, to visit BCI for future research.

Elisabeth Kalko, Jul 22 - Aug 29, to continue bat research, on BCI.



Smithsonian Tropical Research Institute, Panamá

www.stri.org

July 19, 2002



CTFS analytical workshop at STRI

Researchers representing 17 forest sites in 14 countries coordinated by the Center for Tropical Forest Science (CTFS) are meeting at STRI for a month-long analytical workshop from July 7 - 27 at the Gamboa School in Panama. This international effort to understand how tropical forests function began on Barro Colorado Island in 1980 with the establishment of the first long-term forest

dynamics monitoring plot. Standard methods of mapping, measuring and identifying trees over five year census intervals link these sites around the world to make possible comparisons between forests and provide answers to important questions about global climate change and tropical biodiversity.

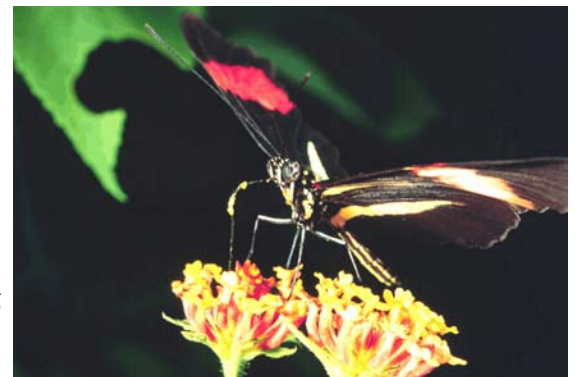
Investigadores de 17 bosques de 14 diferentes países que coordina el Centro de Ciencias Forestales del Trópico (CTFS) se están reuniendo en STRI en un taller de un mes del 7-27 de julio en la Escuela de Gamboa, Panamá. Este esfuerzo internacional para entender cómo funcionan los bosques tropicales empezó en 1980 en la Isla de Barro Colorado, con el establecimiento de una parcela para monitorear la dinámica de bosques. Los métodos de ubicación, medición e identificación estándar de árboles que se usan cada cinco años en censos llevados a cabo en estas parcelas hacen posible las comparaciones entre estos bosques y ofrecen respuestas a importantes cuestionamientos sobre cambios en el clima global y en la biodiversidad tropical.

II International Congress of Heliconius Biology

The STRI community is invited to a meeting of butterfly biologists to be held from Saturday, August 3 to Sunday, August 4 at the Tupper Center and Gamboa. Presentations on the ecology and evolution of *Heliconius* butterflies will cover topics ranging from the biology of wing pattern development, long-term population dynamics, mate choice and sexual selection, hybridization and speciation. Registration cost is

\$60 (includes lunches, transport to and from Gamboa, conference dinner at the Gamboa Rainforest Resort and BBQ on Sunday 4th). Attendance to the talks and lunch on both days is \$15.

Accommodation options are available in Gamboa. See <http://nmg.si.edu/cj/meeting/> for details. E-mail Marissa Batista at batistam@naos.si.edu if you plan to attend. Organizers: Chris Jiggins and Robert Srygley. Talks and poster sessions will be in English.



More arrivals

Sabine Spehn, University of Tuebingen, Jul 22, to study mechanisms of coexistence in two insectivorous gleaning bats (Phyllostomidae: *Micronycteris hirsuta* and *Tonatia bidens*): resource and habitat use and prey detection, on BCI.

Allen Collins and Vicki Pearse, University of California at San Diego, Jul 23 - 29, to study the biogeography of placozoans (Trichoplax) on Bocas and Naos.

Sandra Wilcken, University of Ulm, Jul 22 - Oct 18, to work on echolocation and foraging behavior of the white-lined bat *Saccopteryx bilineata*, on BCI.

BBC Natural History Unit, Jul 23, to visit with scientists for future filming.

José Luis Machado, Swarthmore College, Jul 24 - 29, for an exploratory research visit with Kaoru Kitajima, on BCI.

Stefan Schnitzer, University of Minnesota, Jul 24, to work with Walter Carson, at Gigante.

Brice Quenouville, intern from the University of Perignon, France, Jul 24-Sep 30, to work with Eldredge Bermingham on the molecular systematics of the Pomacentrid reef fish genus *Amphiprinn* (clownfishes).

Lisa Barnett, STRI, Jul 24 - Aug 8, on official business and to attend CTFS and ATB conference sessions and events.

Kathryn Kirby, McGill University, Jul 25 - Aug 15, to work with Muriel Abraham on soil organic carbon loss from the conversion of humid-tropical forest to pasture in the humid neotropics, on BCI.

Director Ira Rubinoff, Jul 25 - Aug 3, on official business to STRI.

XVII Curso de Introducción a la Biología de Campo

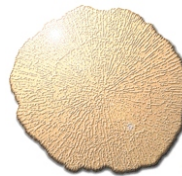
El miércoles 17 de julio se dio inicio al Curso de Introducción a la Biología de Campo en Península Gigante, para estudiantes panameños de pre-grado. Este año participan 14 estudiantes de la Universidad Autónoma de Chiriquí y la Universidad de Panamá. Durante los doce días del curso, los estudiantes tendrán la oportunidad de recibir, de primera mano, conocimientos sobre proyectos de investigación que se llevan a cabo en Panamá, técnicas de trabajo de campo, e información sobre el Monumento Natural de Barro Colorado. Este curso se ofreció por primera vez en 1985, y en la actualidad cuenta con el apoyo logístico y financiero de STRI y la participación de profesores de la Universidad de Panamá.

Darwin Station receives Cosmos Prize

The Charles Darwin Research Station in the Galápagos Island, nominated by STRI director Rubinoff, was selected to receive the 2002 Cosmos Prize, this month. The International Cosmos Prize is an annual award presented by the Expo'90 Foundation in Japan, "to honor those who have, through their work, applied and realized the ideals which the Foundation strives to preserve." Expo'90 was an event dedicated to "the harmonious coexistence of nature and mankind..." The prize, that includes 40 million yen (\$343,141) is awarded for research work that has achieved excellence and is recognized as contributing to a significant understanding of the relationships among living organisms, the interdependence of life and the global environment, and the common nature integrating these inter-relationships. Fernando Espinoza, executive director of the Charles Darwin Foundation, said that they will use the money as much needed matching funds to maintain their research.

La Estación de Investigaciones Charles Darwin en Islas Galápagos, nominada por el director de STRI Ira Rubinoff, fue seleccionada para recibir el Premio Cosmos 2002, este mes. El Premio Cosmos Internacional lo otorga anualmente la Fundación Expo'90 de Japón, "para honrar aquellos que, a través de su trabajo, aplican y ponen en práctica los ideales que la Fundación lucha por preservar." Expo'90 fue un evento dedicado "a la coexistencia armónica entre la humanidad y la naturaleza..." El premio, que incluye 40 millones de yens (\$343,141) se otorga a trabajos de investigación de excelencia y que se haya reconocido que contribuye a un entendimiento significativo de la relación entre organismos vivos, la interdependencia de la vida y los ambientes globales, y la naturaleza en común que comparten estas interrelaciones. Fernando Espinoza, director ejecutivo de Charles Darwin Foundation, dijo que el premio se utilizará como fondo complementario para mantener sus investigaciones.

Estación Darwin recibe Premio Cosmos



Departures

Nélida Gómez, Jul 20 - Aug 24, to Hamburg, Germany, to attend the meetings of the International Society of Chemical Ecology and visit several universities. She will also take some vacation time.

Héctor Guzmán, Jul 21-29, to Caracas, Venezuela, to attend a thesis presentation at Universidad de Venezuela, and to consult with colleagues at Universidad Simón Bolívar.

New publications

Basset, Yves. 2002. "Training parataxonomists to survey tropical forest canopies." In A.W. Mitchell, K. Secoy, and T. Jackson (Eds.), *The global canopy handbook. Techniques of access and study in the forest roof*: 215-218. Oxford: Global Canopy Programme.

Kitching, R., Basset, Yves, Ozanne, C., and Winchester, N. 2002. "Canopy knockdown techniques for sampling canopy arthropod fauna." In A.W. Mitchell, K. Secoy, and T. Jackson (Eds.), *The global canopy handbook. Techniques of access and study in the forest roof*: 134-139. Oxford: Global Canopy Programme.

Miller, S.E., Novotny, Vojtech, and Basset, Yves. 2002. "Case studies of arthropod diversity and distribution." In R.L. Chazdon, and T.C. Whitmore (Eds.), *Foundations of tropical forest biology: Classic papers with commentaries*: 407-413. Chicago: University of Chicago Press.

Swearer, Stephn E., Shima, J.S., Hellberg, M.E., Thorrold, S.R., Jones, G.P., Robertson, D. Ross, Morgan, S.G., Selkoe, K.A., Ruiz, G.M., and Warner, R.R. 2002. "Evidence of self-recruitment in demersal marine populations." *Bulletin of Marine Science* 70(1): 251-272.