

Tupper seminar

Tuesday, February 26, noon seminar speaker will be Alan Kohn, senior scholar from the University of Washington
A snail's place: Ecological and evolutionary diversification in *Conus*

Bambi seminar

Check your bulletin board and GroupWise for information about the next Bambi.

Arrivals

Alan Kohn, Feb 19 - Mar 2, to present seminar and meet with members of the STRI community. If you want to meet with him, please contact Thomas Duda at Naos, or - mail dudat@naos.si.edu

Fitz Productions, Feb 28, to continue filming Elisabeth Kalko's bat project on BCI.

Peter Wrege and Marie Read, Cornell University, Mar 1, to work on the project Army ants and ant-followers: Is there a cost?, in Gamboa.

Rachel Page, short-term fellow from the University of Texas at Austin, Mar 1 - Jun 1, to study call preference of the frog-eating bat, *Traphos cirrhous*, on BCI.

Randal Moore, Auburn University, Mar 1 - May 15, to study the role of dispersal ability in persistence of understory forest birds in Panamanian forest fragments, on BCI.

Michael Libsch, University of Illinois, Mar 1 - Jul 31, to work with Jeff Brawn's monitoring of the dynamics of avian communities and population in Central Panama, in Gamboa.



Smithsonian Tropical Research Institute, Panamá

www.stri.org

February 22, 2002

Members from US Congress visit STRI



(Photo: Chelina Batista)



(Photo: Marcos A. Guerra)

Director Ira Rubinoff traveled to Panama this week to host a visit from members of the US Congress and STRI supporter Joan Siedenburg and daughter Karen Tool. In the photos (left) Rubinoff and scientists Bill Laurance (back) and Joe Wright (right) leave BCI on the water taxi to Gamboa, after visiting the Island and meeting with researchers, on Thursday, February 21. Four groups visited the Canopy Access System in Fort Sherman, also on Thursday. In the photo at right, scientist Joe Wright guides Congressman Wayne Gilchrest (Maryland) on the crane. The group also visited Naos Island Laboratories with director Ira Rubinoff and deputy director Cristián Samper. In the photo (below), Rubinoff, Samper and Naos manager Mercedes Denis, show the group the live organisms in the Sea Water System, on Wednesday, February 20.

El director Ira Rubinoff viajó esta semana a Panamá para atender una visita de miembros del Congreso de los Estados Unidos y la donante de STRI Joan Siedenburg y su hija Karen Tool. En la foto de arriba (izquierda), Rubinoff, y los científicos Bill Laurance (atrás) y Joe Wright (derecha) dejan BCI en el taxi acuático hacia Gamboa luego de visitar la Isla y reunirse con los investigadores, el jueves 21 de febrero. Cuatro grupos visitaron la Grúa de Acceso al Dosel en Fuerte Sherman ese mismo día. En la foto, Joe Wright acompaña al Congresista Wayne Gilchrest en la grúa. Los visitantes también conocieron los Laboratorios de Isla Naos con el director Ira Rubinoff y el subdirector Cristián Samper. En la foto, Rubinoff, Samper y la administradora de Naos, Mercedes Denis, les muestran organismos vivos en el Sistema de Agua de Mar de los Laboratorios Marinos, el miércoles, 20 de febrero.



(Photo: Marcos A. Guerra)

More arrivals

Moritz Weinbeer, University of Ulm, Germany, Mar 1-25, to work with Fitz Productions, on BCI.

Departures

Cristián Samper, Feb 21-27, to Washington DC, on official business at SI and to St. Louis, MO, to meet with Peter Raven, member of SI Science Commission.

William Laurance, Feb 24-27, to Gainesville, FL, to attend a conference on Working Forests in the Tropics.

Harry, Penny and Alexandra Barnes, Mar 1 - Apr 14, to Victoria, Canada, on vacation.

New publications

Hooghiemstra, Henry, Van der Hammen, Thomas, Cleef, Antoine, and Bush, Mark B. 2002. "Paleoecología de la flora boscosa." In Manuel R. Guariguata, and Gustavo Kattan (Eds.), *Ecología y conservación de bosques neotropicales*. 43-58. Cartago, Costa Rica: Ediciones LUR.

Kareiva, Peter, and Laurance, William F. 2002. "In brief." *Trends In Ecology & Evolution* 17(2): 63.

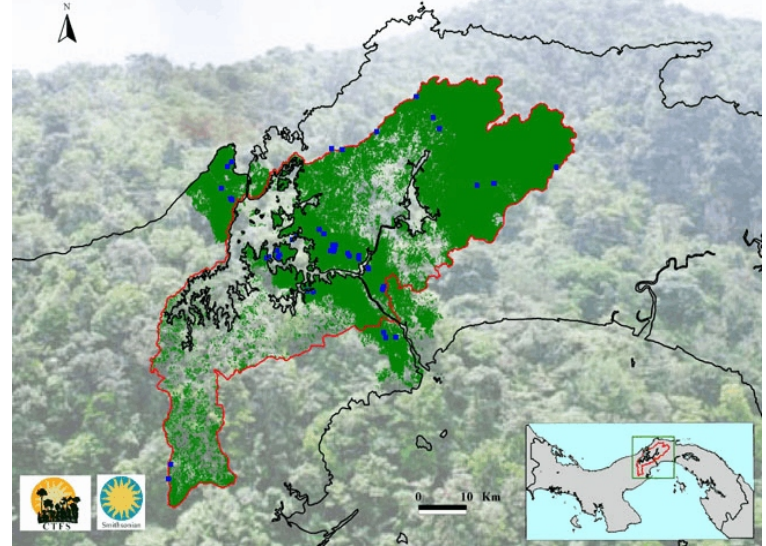
Kattan, Gustavo, Brokaw, Nicholas V. L., Laurance, William F., and Renjifo, Luis M. 2002. "Fragmentación: patrones y mecanismos de extinción de especies." In Manuel R. Guariguata, and Gustavo Kattan (Eds.), *Ecología y conservación de bosques neotropicales*. 561-590. Cartago, Costa Rica: Ediciones LUR.

STRI in the news

Macilwan, Colin. 2002. "The rise of the bean counters." *Nature* 415: 466-467.

Tree atlas of the Panama Canal watershed

STRI's Center for Tropical Forest Science (CTFS) launched an internet site, www.ctfs.si.edu with 1050 tree species in the Panama Canal watershed, most of the information collected at CTFS's forest dynamic plots. Many species include a distribution map, description in English and Spanish, and photographs or drawings of the leaves, flowers and seeds. The site also provides .pdf files of recent CTFS articles and will soon offer links to datasets available in the web.



El Centro de Ciencias Forestales del Trópico de STRI (CTFS) tiene un nuevo sitio en internet, www.ctfs.si.edu con un atlas de 1050 especies de árboles que se encuentran en la cuenca del Canal de Panamá, casi todas de las parcelas de dinámica de bosques del CTFS. Muchas especies incluyen mapa de distribución, descripciones en inglés y español, y fotografías y/o dibujos de las hojas, flores y semillas de los árboles. El sitio también ofrece archivos en .pdf de artículos recientes publicados por investigadores del Centro y pronto tendrá enlaces con bases de datos disponibles en la red.

Atlas de árboles de la cuenca del Canal de Panama



Visit to National Assembly

Acting director Cristián Samper and Elena Lombardo from STRI's Office of External Affairs paid a courtesy visit to the Panamanian Legislative Assembly on Thu, Feb 14. In the photo, Samper and Lombardo visit with National Assembly president Ruben Arosemena. Samper invited members of the Assembly's board of directors to visit STRI facilities and learn about our research activities in Panama. (Photo: Marcos A. Guerra)

Cristián Samper, director encargado de STRI y Elena Lombardo de la Oficina de Asuntos Externos hicieron una visita de cortesía a la Asamblea Legislativa de Panamá, el jueves 14 de febrero. En la foto, Samper y Lombardo se reúnen con Rubén Arosemena, presidente de la Asamblea en sus oficinas. Samper invitó a la junta directiva de la Asamblea a que visiten las instalaciones de STRI y conozcan sobre las actividades de investigación que se llevan a cabo en STRI desde Panamá.

Secretary needed

STRI is accepting applications for a secretary for the meetings of the Association for Tropical Biology that will be held in Panama next July, effective immediately. The Conference will synthesize recent advances in tropical biology with emphasis on ecology and evolution and the perspective to be gained through an understanding of past and future changes in climate and human populations. The selected person will work at the Tupper Center, will coordinate administrative activities related to the conference, provide secretarial support, word processing, correspondence, graphics, and clerical duties. This is a temporary position for six months. The candidates must have an excellent domain of English written and spoken, full knowledge of word processing, (Word) Excel, PowerPoint and Internet, have good interpersonal relations and be proactive. Applicants must present Curriculum Vitae and three recent references to: Departamento de Recursos Humanos, Instituto Smithsonian de Investigaciones Tropicales, Apartado 3353, Balboa, Ancón, República de Panamá or e mail to latorral@tivoli.si.edu. Applications will be received until March 1, 2002.