

# State of New Hampshire Division of Child Support Services

## NECSES

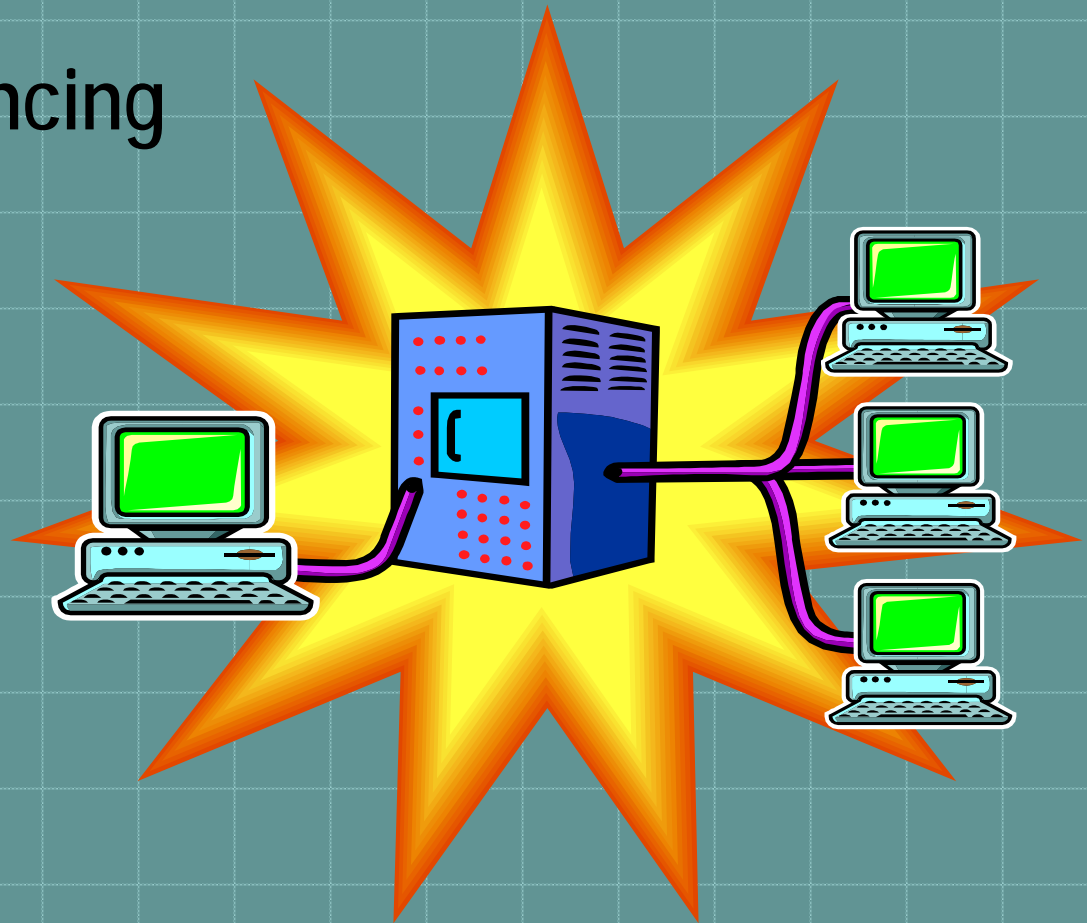
New England Child Support  
Enforcement System

# NECSES

- ◆ Originally developed in NH and ME
- ◆ Statewide production since March 1991
- ◆ FSA 1988 Certified June 1997
- ◆ PRWORA Certified December 2003

# Mainframe System

- ◆ Continue Enhancing  
or
- ◆ Replatform?



# Option I

## Using ARCSIS as a base

- ◆ August 2002 Visited Arkansas
- ◆ ARCSIS is a 'grandchild' of NECSES
- ◆ NECSES Users were able to follow design
- ◆ Many screens still have the same name
- ◆ Data organized in a familiar way

# Option 2

## Replatform NECSES in NH

- ◆ Create exactly what is needed
- ◆ Longer Development
- ◆ Less Cost Control
- ◆ Greater Conversion Risks

# Option 3

## Continue Enhancement of Current NECSES

- ◆ Technically Obsolete
- ◆ Inefficiencies –  
“spaghetti code”
- ◆ Workers skilled in  
COBOL also aging



# Gap Analysis NECSES / ARCSIS

From the user viewpoint:

- ◆ How ARCSIS and NECSES are alike
- ◆ What ARCSIS has that NECSES can use
- ◆ What ARCSIS has that must be changed
- ◆ What ARCSIS doesn't have that NECSES needs

# Technical Changes

NH's OIT can support either SQL or Oracle Database

- ◆ Still at issue:
  - ◆ Staff to support Maintenance once implemented
  - ◆ Financial commitment by the Department and State
  - ◆ Conversion of Data
  - ◆ Pre-conversion data cleanup



# Interfaces

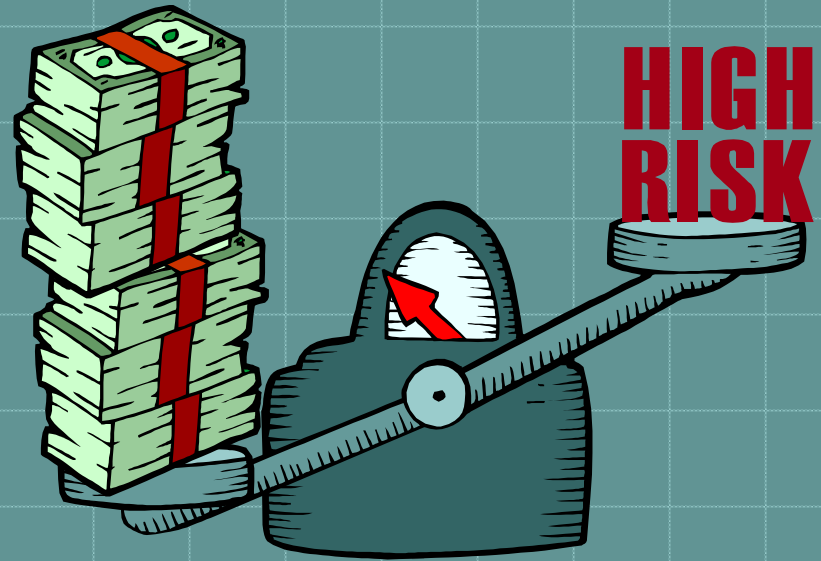
- ◆ Department (IV-A, IV-E, Medicaid)
- ◆ State (SESA, DMV)
- ◆ Federal (Offset, FCR, CSENet)
- ◆ Private (Banks, Utilities)



# Risk Assessment

Using ARCSIS as the basis for replatforming NECSES

- ◆ Maintaining two systems in sync if changes done modularly
- ◆ Conversion of data
- ◆ Interruption of services/payments to Custodial Parents
- ◆ Knowledge transfer and training for OIT and DCSS staff



# Financial Data Risk Assessment

## Old System Financial Activities and New System Changes to that Information

- ◆ Backing out and reprocessing receipts
- ◆ UDC distribution
- ◆ Arrearage and accrual adjustments
- ◆ Reissuing of checks

