

National Wetlands Condition Assessment

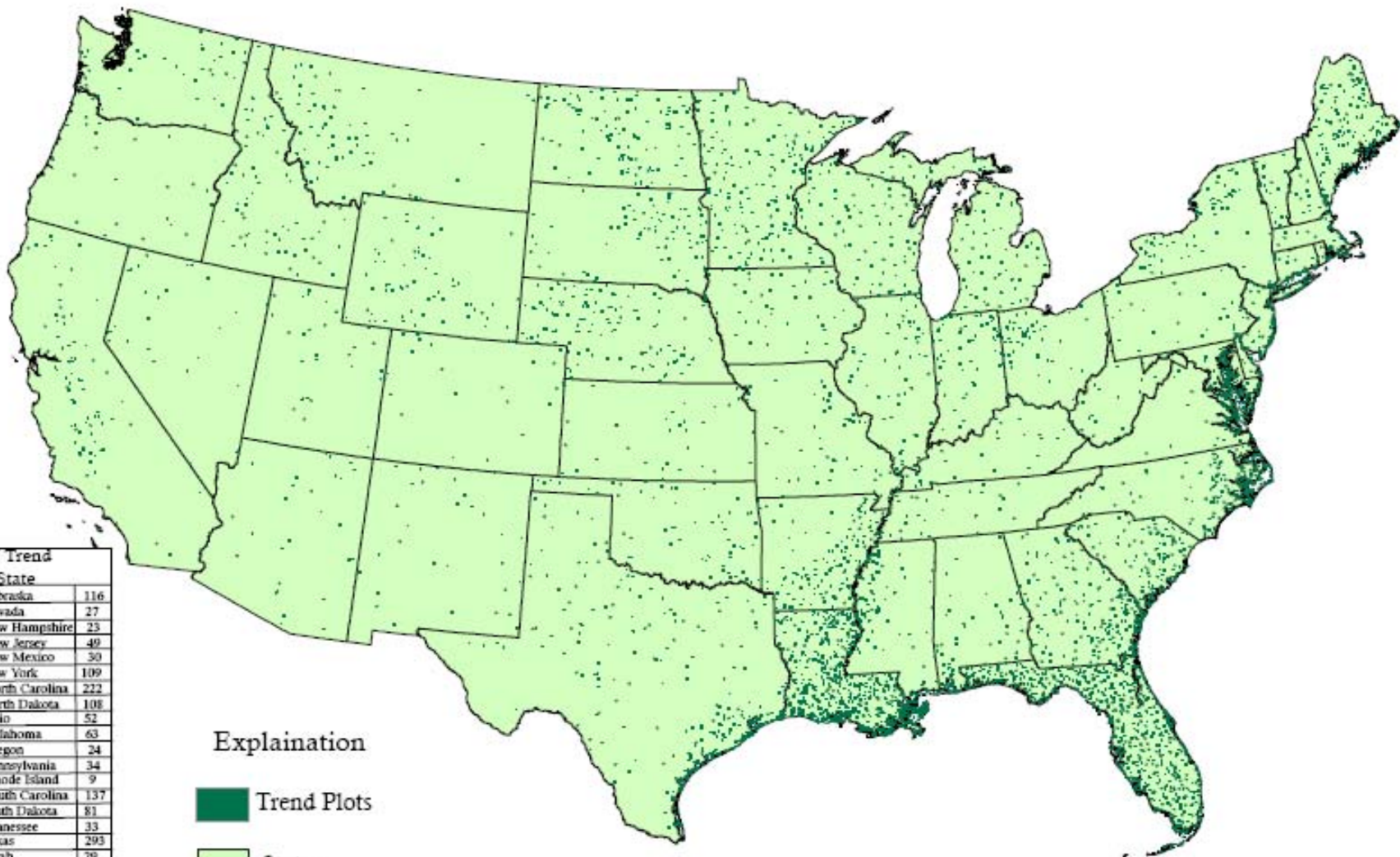
- EPA will collaborate with State and Tribal partners to refine the three objectives of the National Wetlands Condition Assessment:
 1. Produce a national report that describes the quality of the nation's wetlands,
 2. Build State and Tribal capacity to implement wetland monitoring and assessment programs that will guide policy development and aid project decision-making,
 3. Advance the science needed to achieve Obj. #2.

Collaboration with FWS

- EPA will collaborate with FWS in designing NWCA
 - ensure the national condition assessment most effectively complements the Service's Wetlands Status and Trends Study.
- NWI Status and Trends documents trends in wetlands acreage
- NWCA will evaluate the ambient condition of the nation's wetlands resources.
- Together these reports will offer the most comprehensive ecological evaluation of the nation's wetlands to date and provide valuable information to support policy and resource management decisions.



FWS Status and Trends Plots

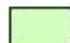


Number of Trend
Plots Per State

Alabama	82	Nebraska	116
Arizona	28	Nevada	27
Arkansas	135	New Hampshire	23
California	83	New Jersey	49
Colorado	24	New Mexico	30
Connecticut	32	New York	109
Delaware	25	North Carolina	222
Florida	636	North Dakota	108
Georgia	210	Ohio	52
Idaho	70	Oklahoma	63
Illinois	70	Oregon	24
Indiana	58	Pennsylvania	34
Iowa	46	Rhode Island	9
Kansas	31	South Carolina	137
Kentucky	30	South Dakota	81
Louisiana	635	Tennessee	33
Maine	149	Texas	293
Maryland	101	Utah	29
Massachusetts	38	Vermont	24
Michigan	96	Virginia	94
Minnesota	175	Washington	42
Mississippi	101	West Virginia	18
Missouri	52	Wisconsin	91
Montana	75	Wyoming	68

Explanation

 Trend Plots

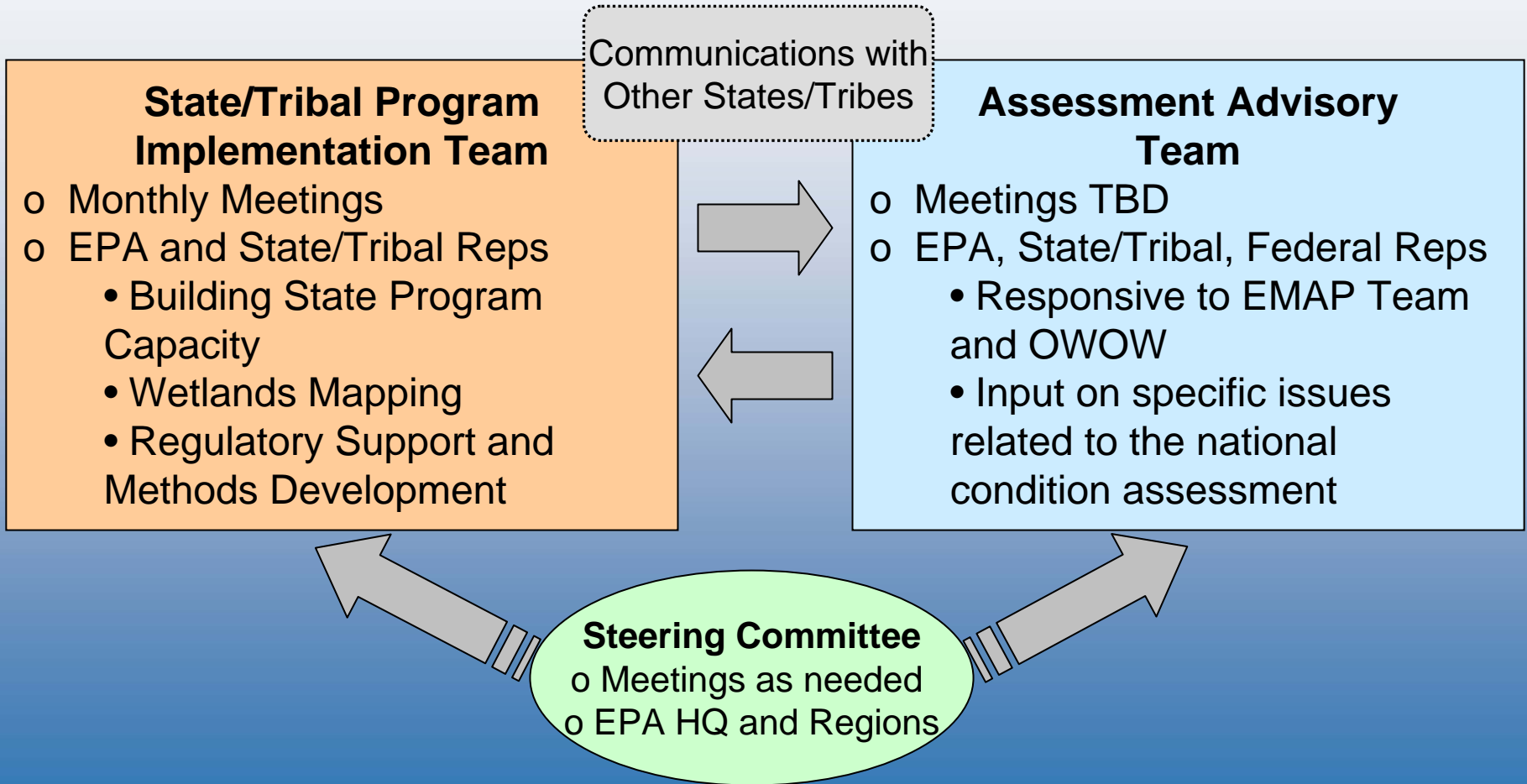
 States

RESEARCH & DEVELOPMENT

Building a scientific foundation for sound environmental decisions



National Wetlands Monitoring & Assessment Workgoup



Progress to Date

National Wetlands Condition Assessment

- Target Population
 - All wetlands of the U.S. – tidal and non-tidal wetted areas with rooted vegetation
- Sample Frame
 - NWI S&T sample plots (4682 2x2 sq. mi. plots), supplemented with new plots in the Pacific coast, including only polygons classified as follows:

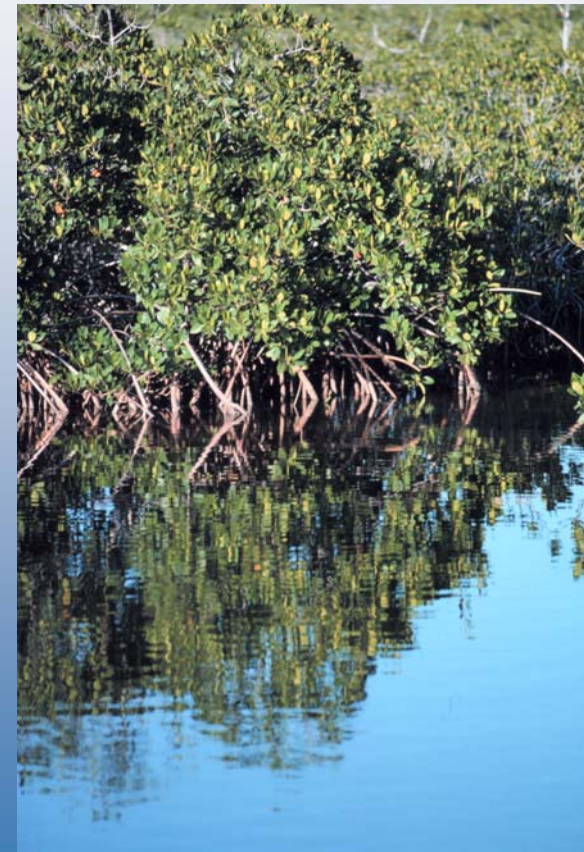


Regional Pilots

Wetlands Project	Partners
Mid-Atlantic States Regional Wetlands Assessment	EPA Region 3 & ORD Penn State, VIMS
Southeast Isolated Wetlands Assessment	EPA Region 4 & ORD, RTI, NC DWQ, SC OCRM, USC, OSU
Minnesota Statewide Wetland Assessment	EPA ORD, MN PCA
California Estuarine Wetland Survey	EPA ORD, SCCWRP, MLML, CCC, SFEI
Gulf of Mexico Coastal Wetlands Survey	EPA ORD Gulf Breeze USGS NWRC
Rocky Mountain Wetlands Region 8 REMAP Project	EPA Region 8 and ORD, MNHP, CNHP, WNDD, USFS
Region 5 REMAP Project	EPA Region 5, ORD, & Region 5 States


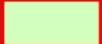
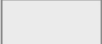

GOM Coastal Wetlands Pilot Survey

- Objectives
 - Evaluate feasibility of implementing probability survey design on regional scale
 - Evaluate feasibility of indicators across multiple wetland types
 - Assess condition of GOM coastal wetlands



EMAP Wetlands GOM Region Base Sampling Stations

HUC Category

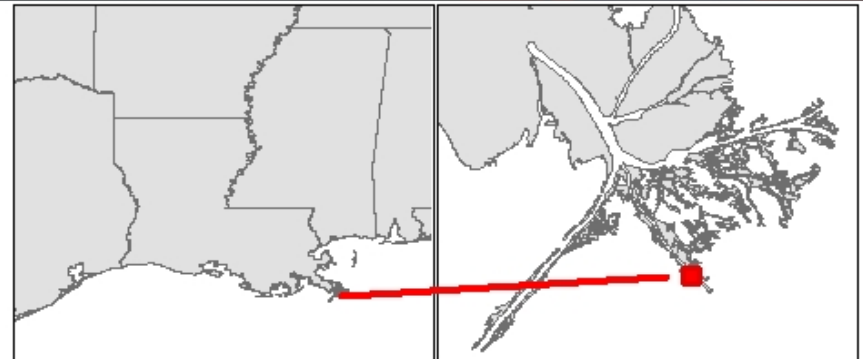
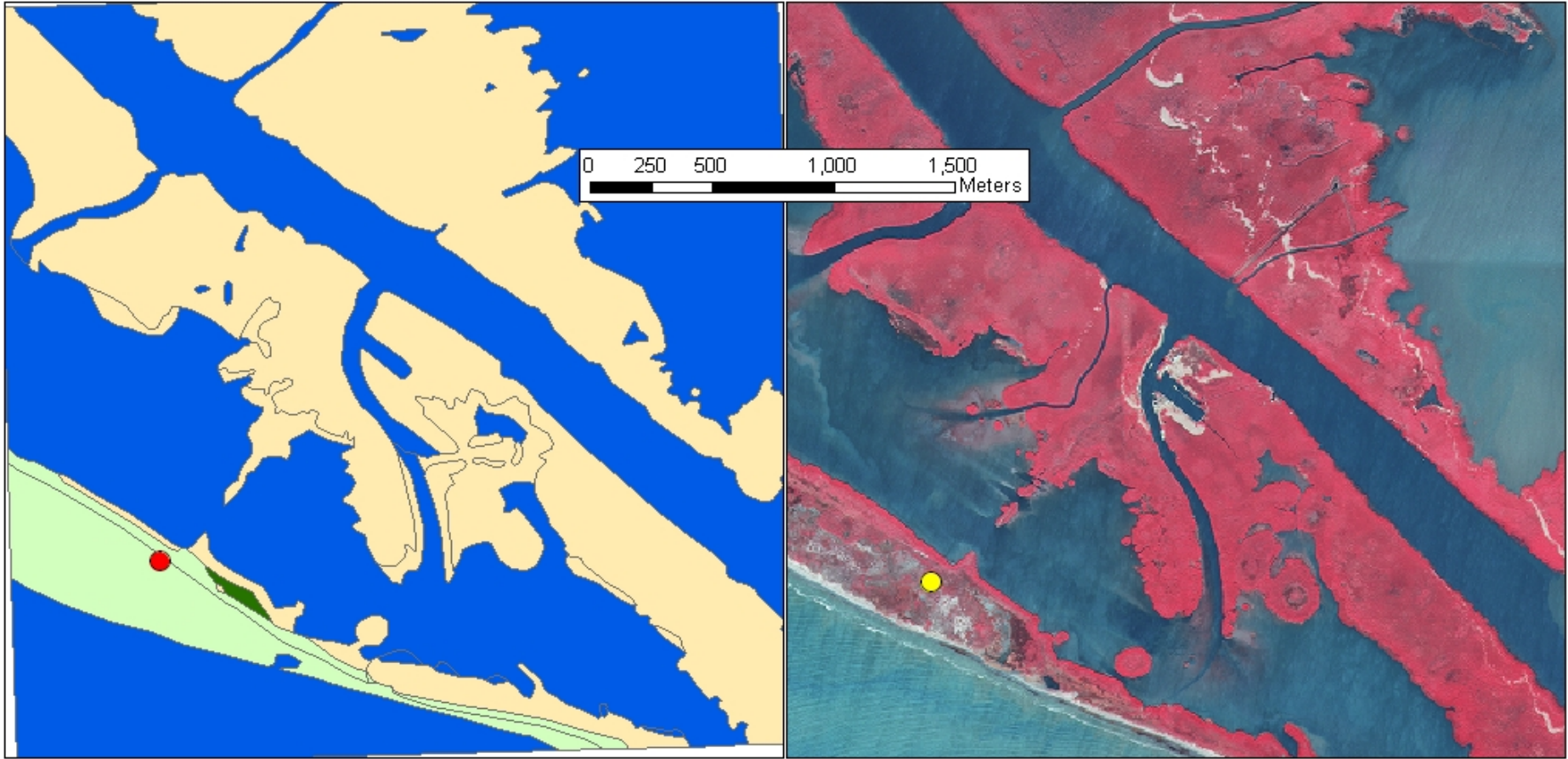
-  GOM Coastal
-  Other Coastal
-  Inland
-  State Boundary

Texas - Mexico border

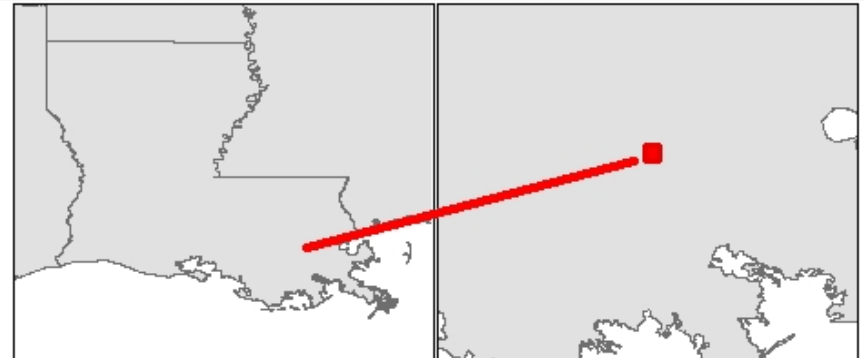
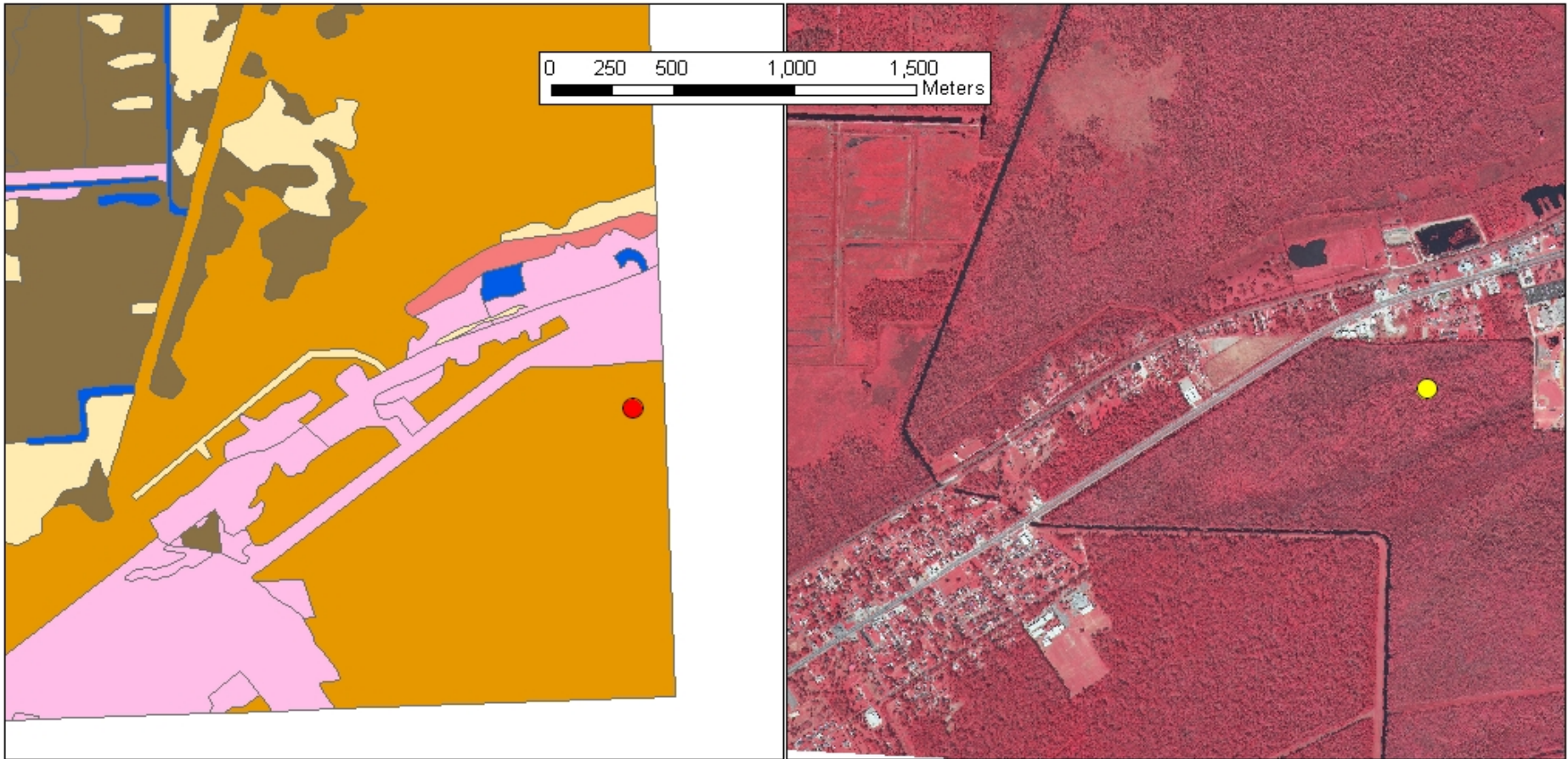
Florida Bay



NWI S&T Class - Estuarine Intertidal Emergent

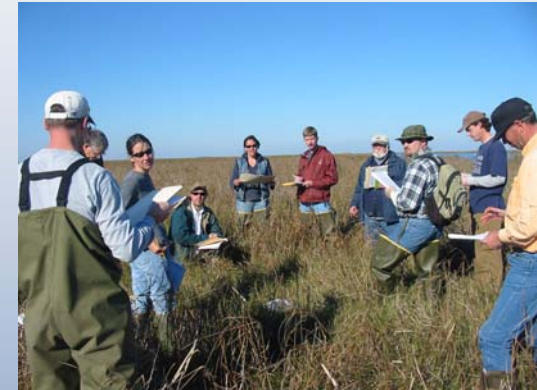


NWI S&T Class – Palustrine Forested



Assessment Levels

- Level 1 – Landscape Assessment
 - GIS, remote sensing
 - Wetland coverage, land use
- Level 2 – Rapid Assessment
 - On-site field survey - visual
 - Scores, metrics
- Level 3 – Intensive Assessment
 - On-site sample collection
 - Vegetation, water, soils



Application of Elements of a State Water Monitoring and Assessment Program For Wetlands

<http://www.epa.gov/owow/wetlands/monitor/#elements>

Deployment Issue

Identification of Writing Team for Field Operations Manual



United States Environmental Protection Agency
Office of Water
Washington, DC
EPA841-B-04-004

Wadeable Streams Assessment

Field Operations Manual



July 2004

FINAL

Reporting and Review Issue

Integration with Other Assessment Reports

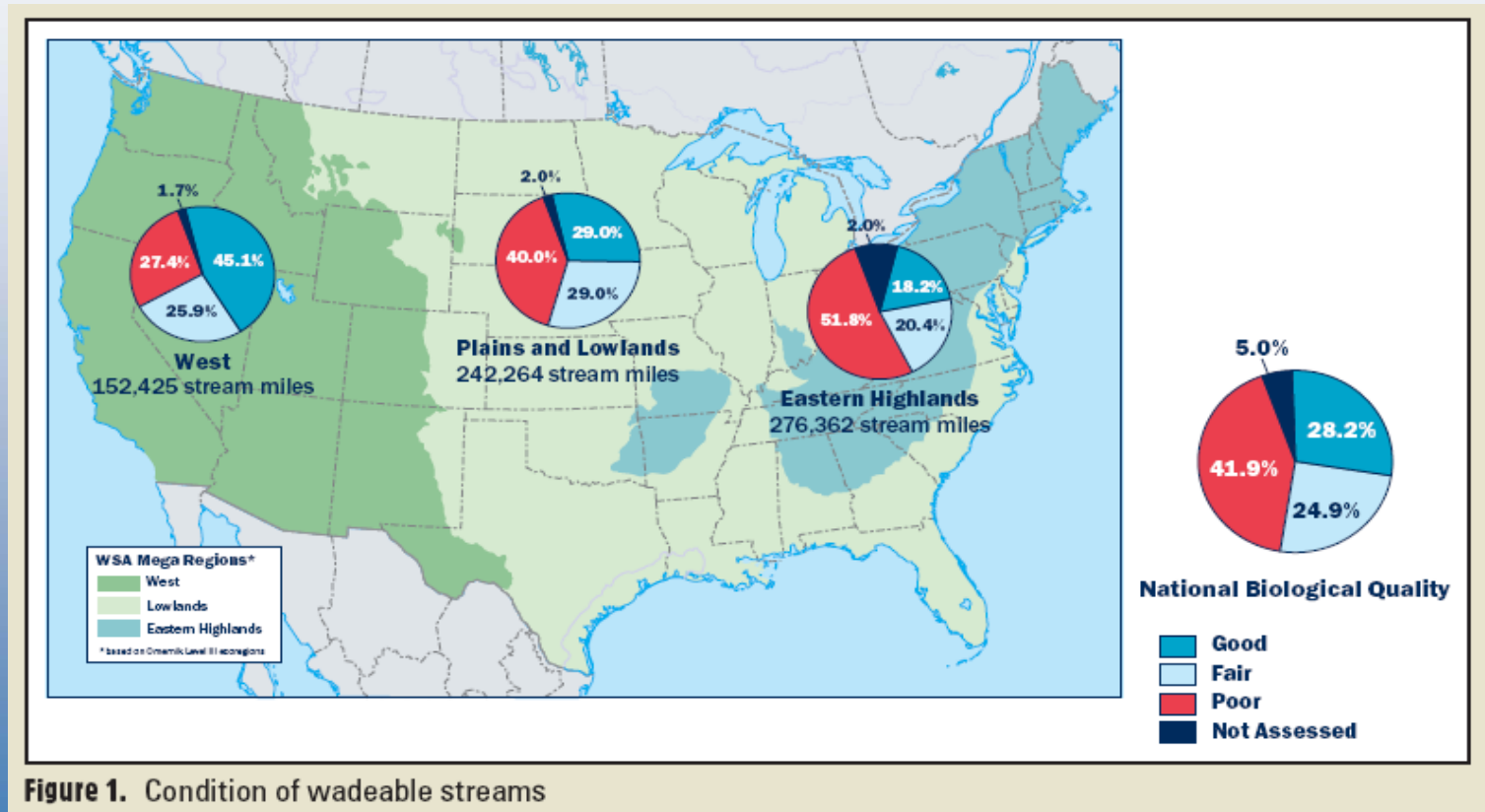


Figure 1. Condition of wadeable streams

Opportunity for Building State and Tribal Capacity

Discussion