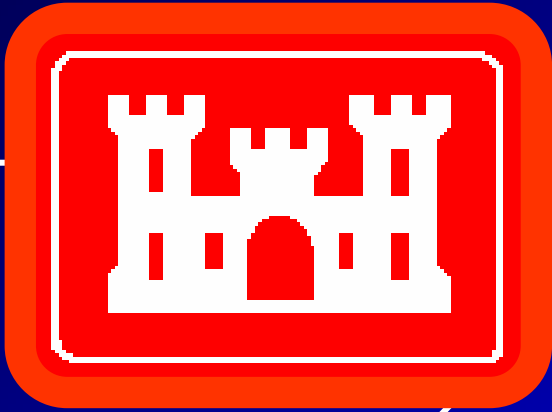


**US Army Corps
of Engineers**



Civil Works Overview



The Army Civil Works Mission

Provide the Nation with Responsive ...



**Development & Management of
Water Resources Infrastructure**



**Protection, Restoration &
Management of the Environment**



Disaster Response & Recovery



Engineering & Technical Services

in an environmentally, economically and technically sound manner



Scope of the Program

◆ People

- ❖ Civilian Employees: 25,022 (FTE)
- ❖ Military: 188
- ❖ Contractor community: Unlimited

◆ Offices

- ❖ Divisions: 8; Districts: 38
- ❖ Hundreds of Area, Project, Resident Engineer Offices throughout the U.S.

◆ Funding

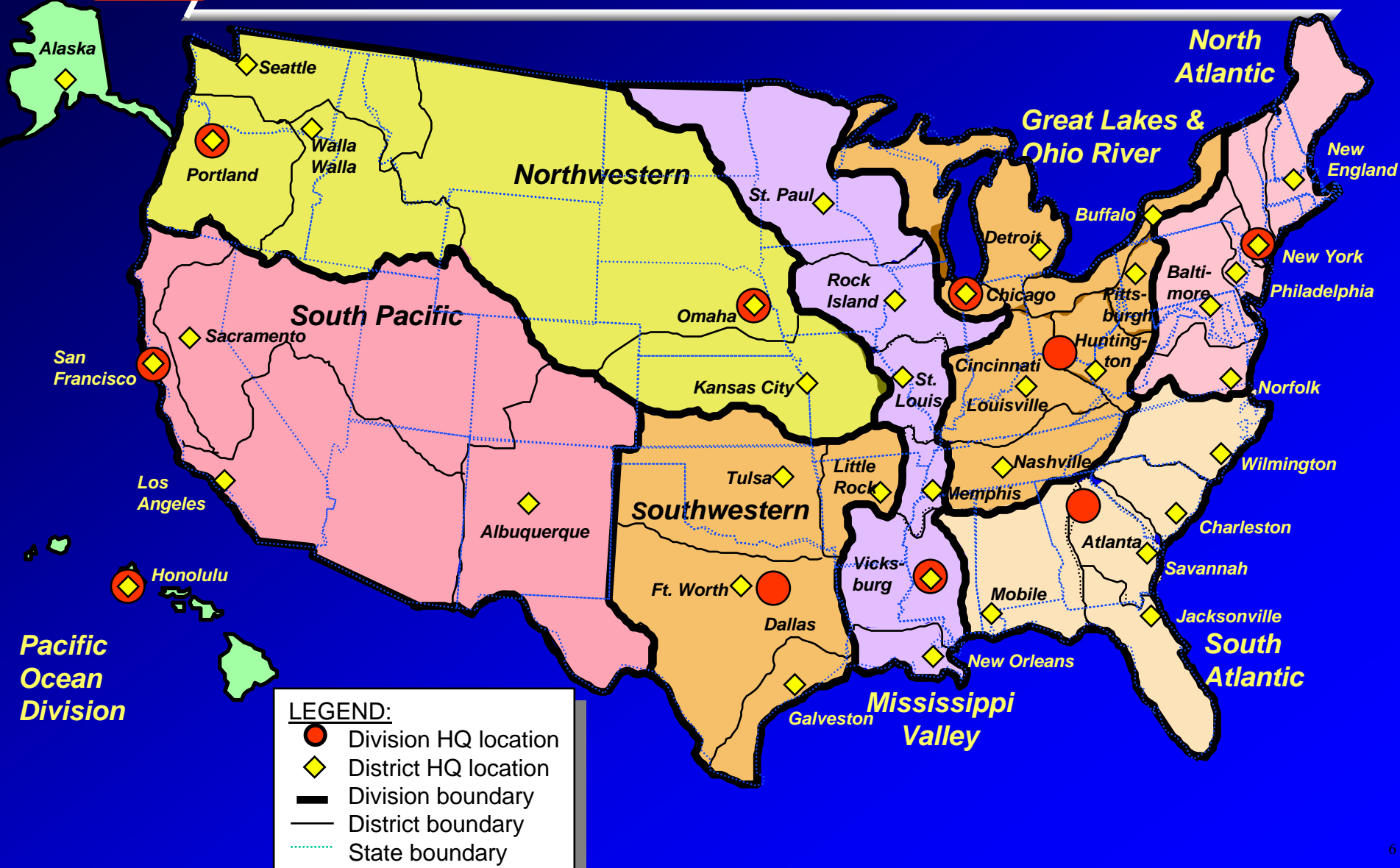
- ❖ Approximately \$5 billion annually
 - Does not include Support for Others
- ❖ **No cost to DOD funds or employee ceilings**



Civil Works Skills

- ◆ **Planning**
- ◆ **Design**
- ◆ **Construction**
- ◆ **Engineering management**
- ◆ **Contingency & disaster response**
- ◆ **Environmental services**
- ◆ **Real estate management**
- ◆ **Engineering & materials R&D**

Civil Works Divisions & Districts

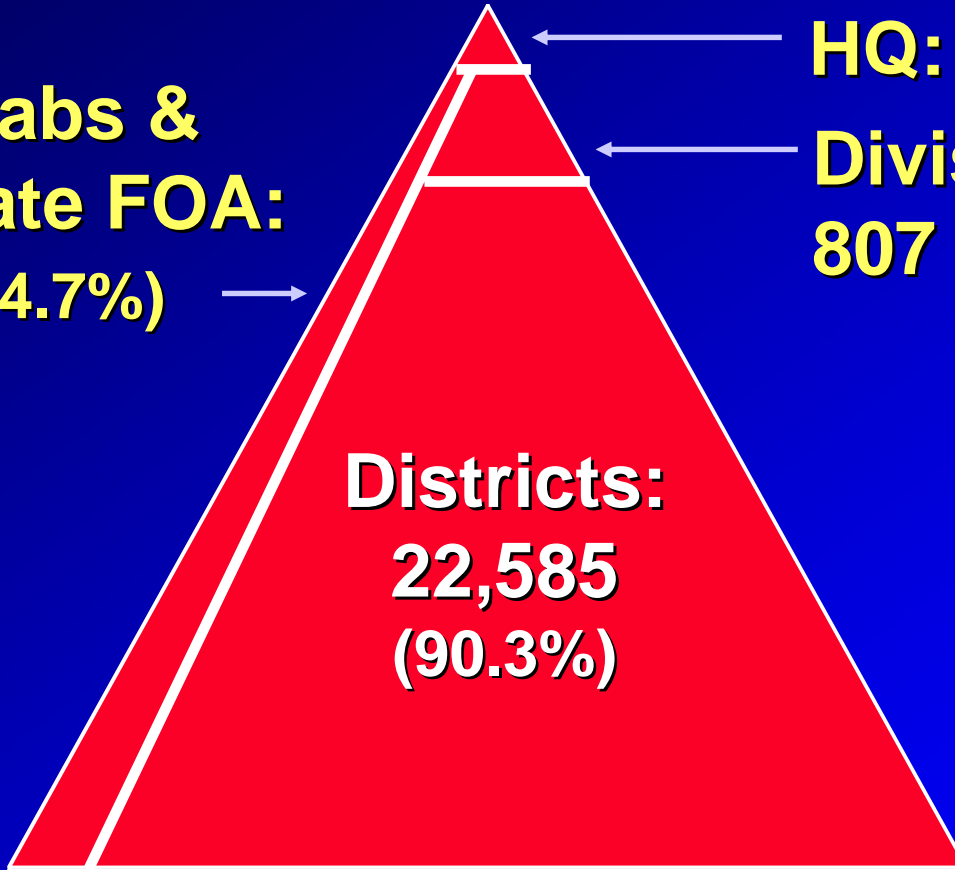




Where Are Our Civil Workers?

Full-time Equivalent Allocations

**R&D Labs &
Separate FOA:
1,179 (4.7%)**



HQ: 451 (1.8%)

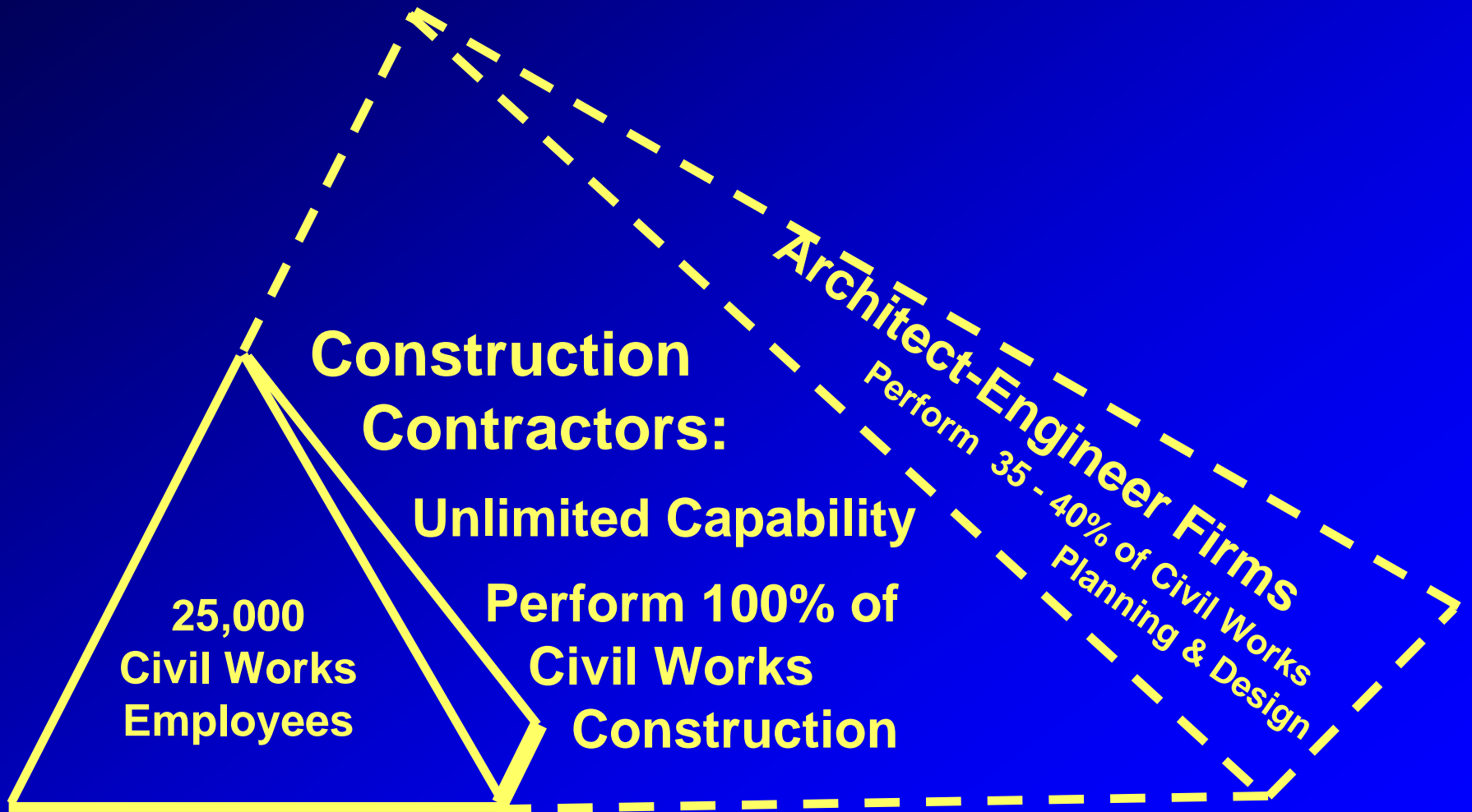
**Divisions:
807 (3.2%)**

**Districts:
22,585
(90.3%)**

Total: 25,022



Private Sector Leverage





Business Programs

- ◆ **Navigation (Harbors, Inland Waterways)**
- ◆ **Flood Control & Shore Protection**
- ◆ **Environmental Stewardship**
- ◆ **Regulation of U.S. Waters & Wetlands**
- ◆ **Formerly Used Sites Remedial Action Program (FUSRAP - Radiological Waste Cleanup)**
- ◆ **Disaster Preparedness & Response**
- ◆ **Hydropower**
- ◆ **Water Supply & Quality**
- ◆ **Recreation**
- ◆ **Support to Other Agencies**



Business Program:



- ▣ **11,000 miles of Inland and Intracoastal Waterways**
 - ☒ **237 Lock Chambers**
 - ☒ **Moving over 600 million tons**
 - ☒ **Carrying 16% of Nation's inter-city freight at a cost 1/2 that of rail, 1/10 that of trucks**
- ▣ **300 major seaports handle 1.5 billion tons of cargo per year**
 - ☒ **Over 600 smaller harbors**



Business Program:



- ▣ **383 dams & reservoirs**
- ▣ **8,500 miles of levees**
- ▣ **Flood protection advice & assistance to States, Localities, Tribes**
 - ✉ **35,000 requests for information per year**
- ▣ **Average annual flood damages prevented = \$22 B**
- ▣ **Every \$1 invested in flood control has prevented nearly \$6 in flood damages (after adjusting for inflation)**



Business Program:



- **Manage 18,000 sq. mi. of project lands (1/2 DA total, 1/3 DOD total)**
- **All projects regularly checked for compliance with environmental law**
- **Project modifications for Improvement of Environment (Sec. 1135)**
- **Major environmental restoration projects (e.g. Everglades)**
- **Approx. 15% of Civil Works Budget is for environmental stewardship**



Business Program:

Regulation of Waterways & Wetlands



- ▣ **Sec. 404, Clean Water Act of 1972; other laws; court decisions**
- ▣ **Nearly 90,000 permit cases processed per year**
 - **92% completed within 60 days**
- ▣ **Actions permitted on 21,000 acres; in return, 46,600 acres of wetland restoration or creation required**
- ▣ **1,100 people employed in program**



Business Program:

Formerly Used Sites Remedial Action Program (FUSRAP)



- ◆ **Cleanup of sites contaminated with low level radioactive waste**
 - ❖ **Sites in Missouri, Ohio, New York, New Jersey, Maryland, Illinois, Massachusetts & Connecticut**

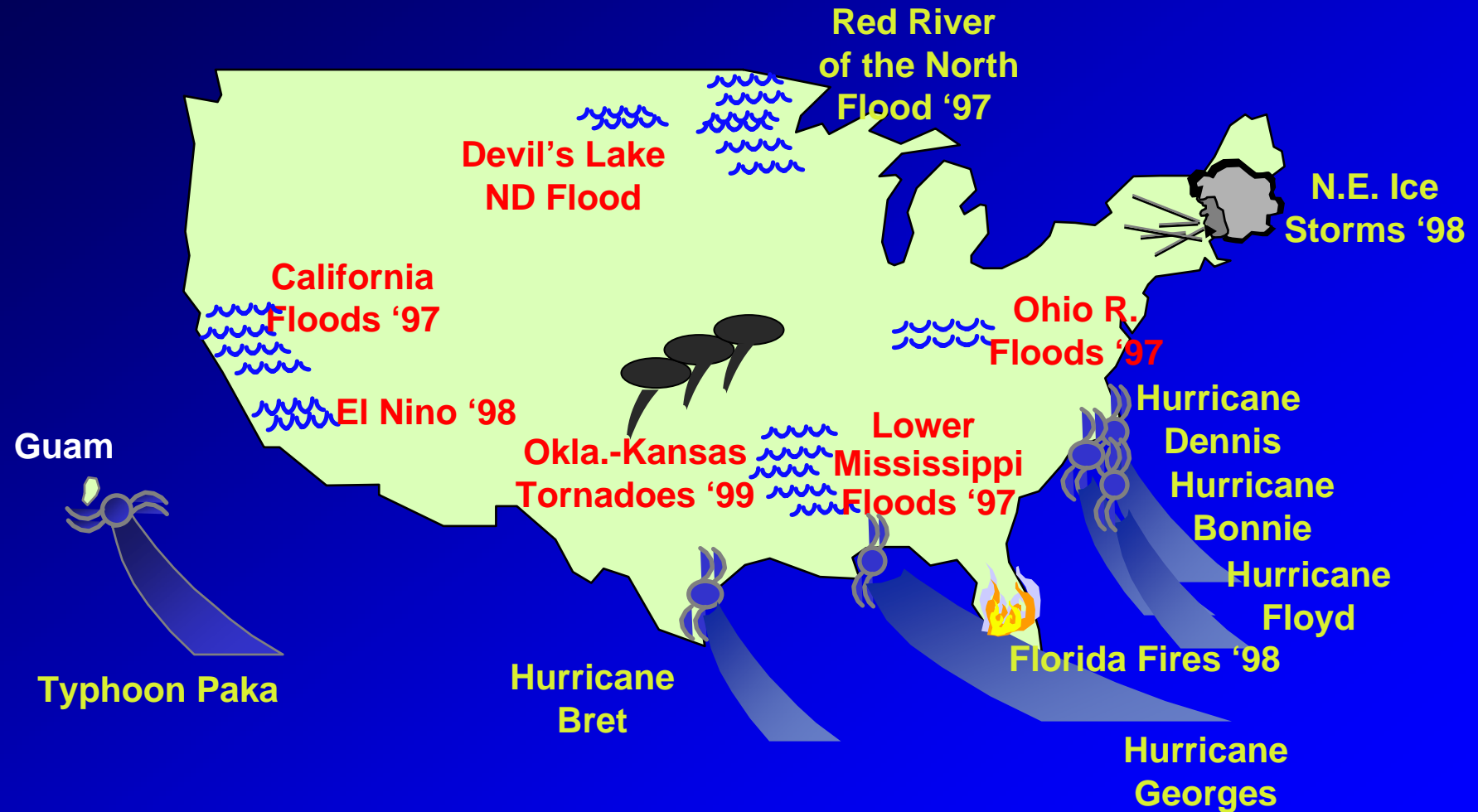


Business Program:



- ◆ **Army has missions under law**
 - ❖ P.L. 93-288 (Stafford Act--FEMA)
 - ❖ P.L. 84-99 (Floods)
- ◆ **Federal Response Plan: Army is executive agent for Engineering & Public Works support**
- ◆ **Leverage with contractors; other Army & DOD assets**

Major Disaster Responses 1997-99





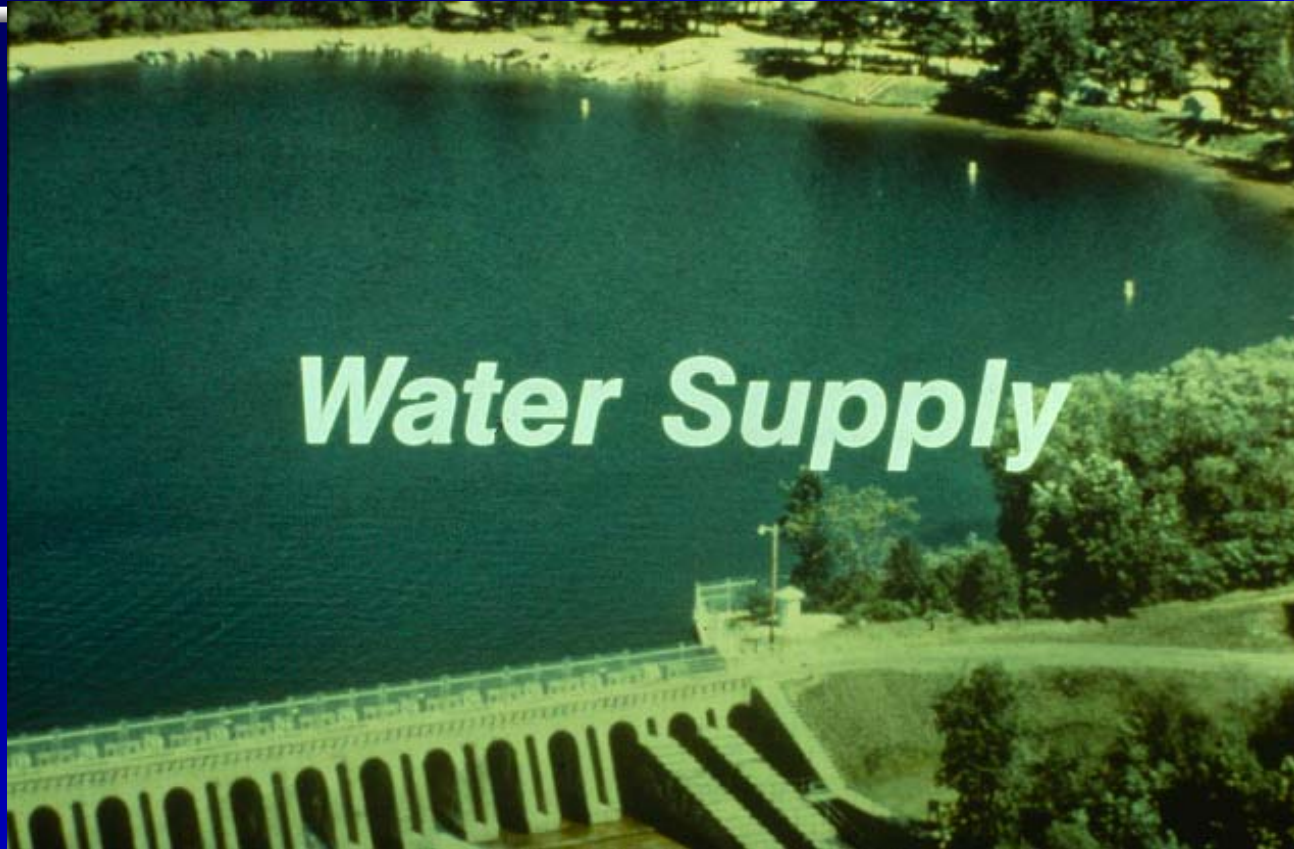
Business Program:



- **24% of Nation's hydropower (3% of total U.S. electric energy)**
- **75 plants with over 20,000 megawatts total capacity**
- **Nearly \$450 million a year in U.S. revenue from power sales**



Business Program:



- **Water from Corps reservoirs supplies 10 million people in 115 cities**
 - ✉ **Including Washington, DC; Pentagon; Virginia suburbs from aqueduct built and operated by Corps since 1857**
- **Agricultural water supplied from Western projects**



Business Program:



- **Corps is second largest provider of outdoor recreation in U.S.**
- **Over 4,300 sites at 463 projects**
- **360 million visits a year by about 25 million people**
 - **10% of U.S. population visits at least one day a year**
- **600,000 jobs generated by recreation**
- **Corps rangers meet more Americans than any other Department of Army personnel**



Business Program:

Support for Others



- ◆ **\$800 million in construction/management for 60 U.S. agencies**
- ◆ **Major customers:**
 - ❖ Environmental Protection Agency (Superfund toxic waste cleanup)
 - ❖ Federal Emergency Management Agency
 - ❖ Departments of Justice, Transportation, Energy, Interior
- ◆ **Corps expenses reimbursed by agency requesting support**
- ◆ **Agencies often find it more cost-effective to use Corps than develop in-house engineering management organization**

The Federal Budget (FY 2001)

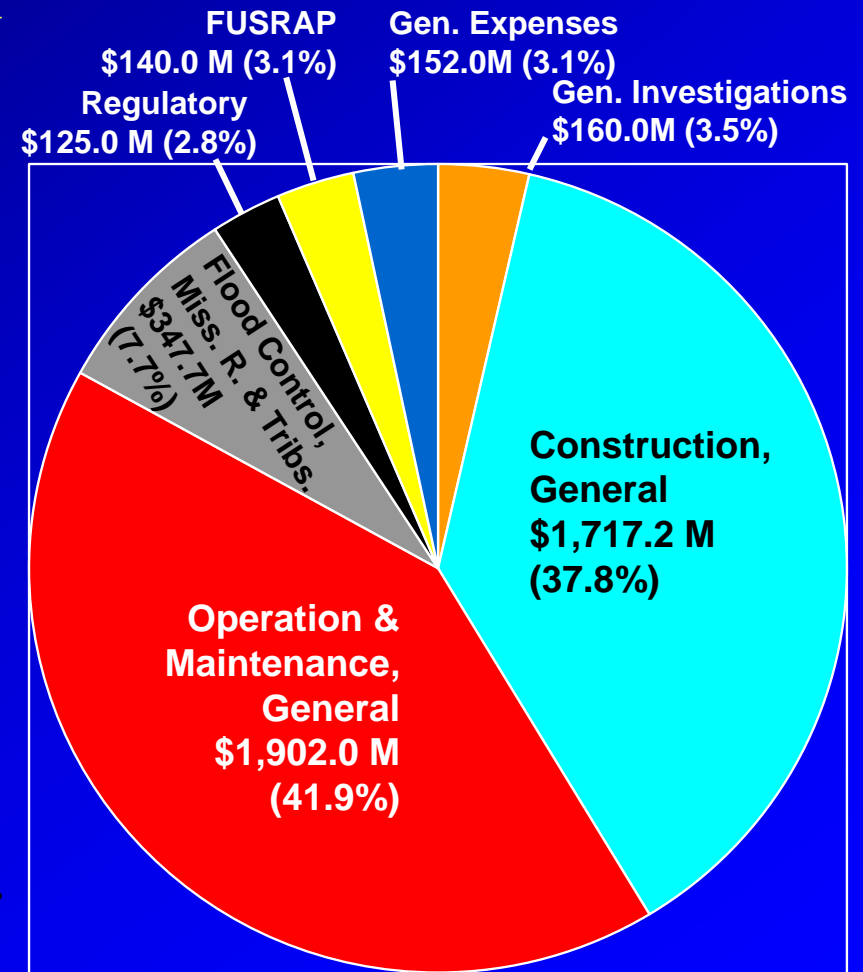
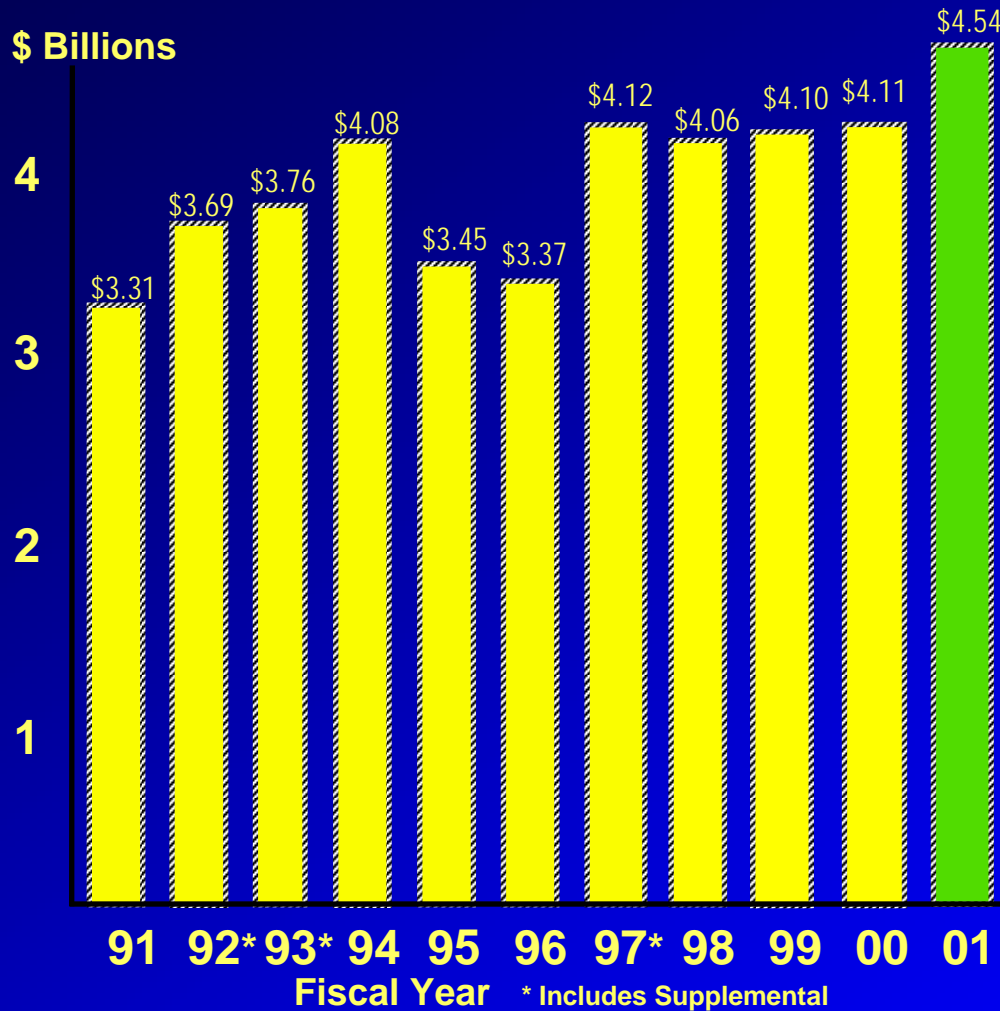


Army Civil Works: 0.25%





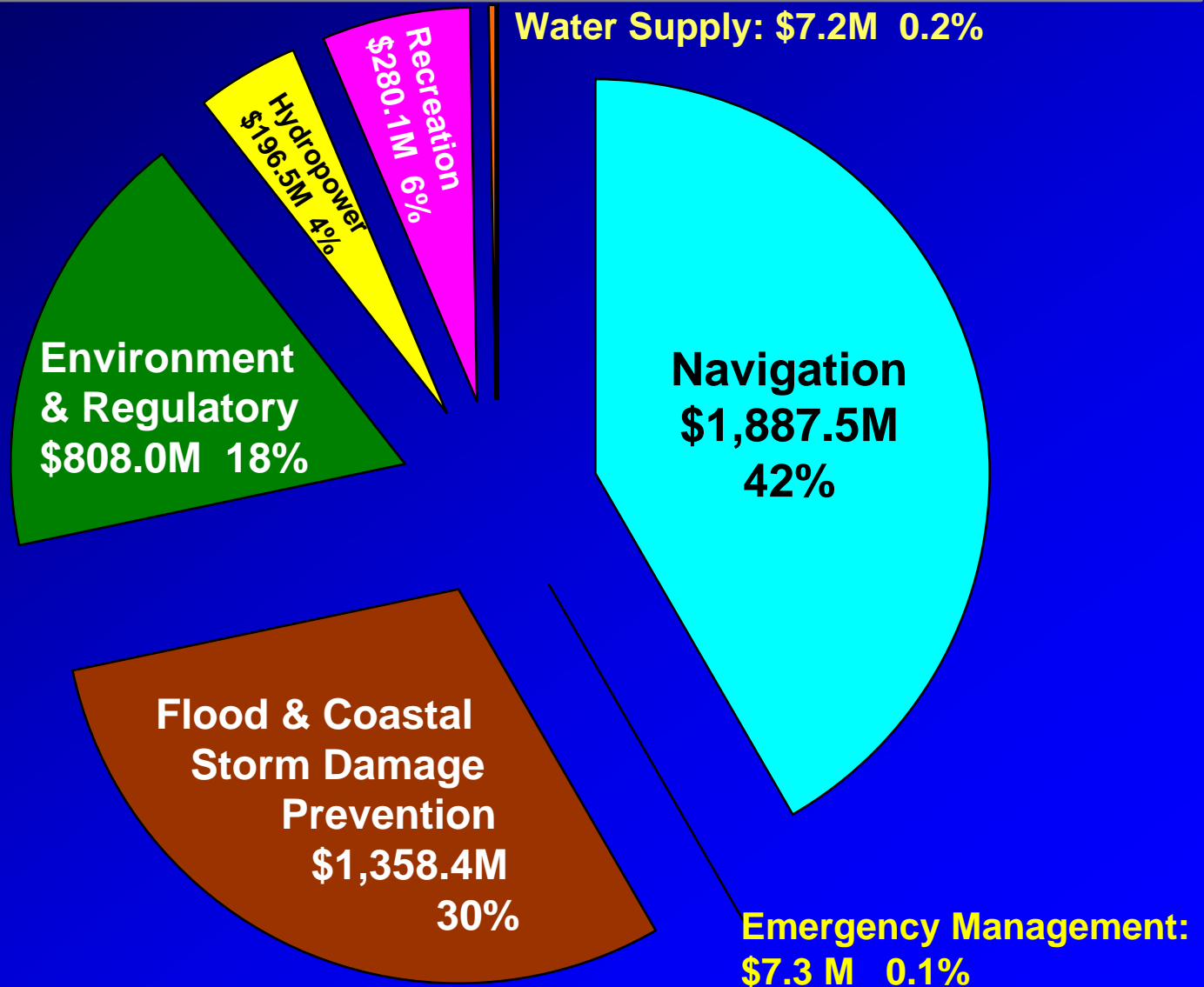
FY 01 Appropriation and Trends



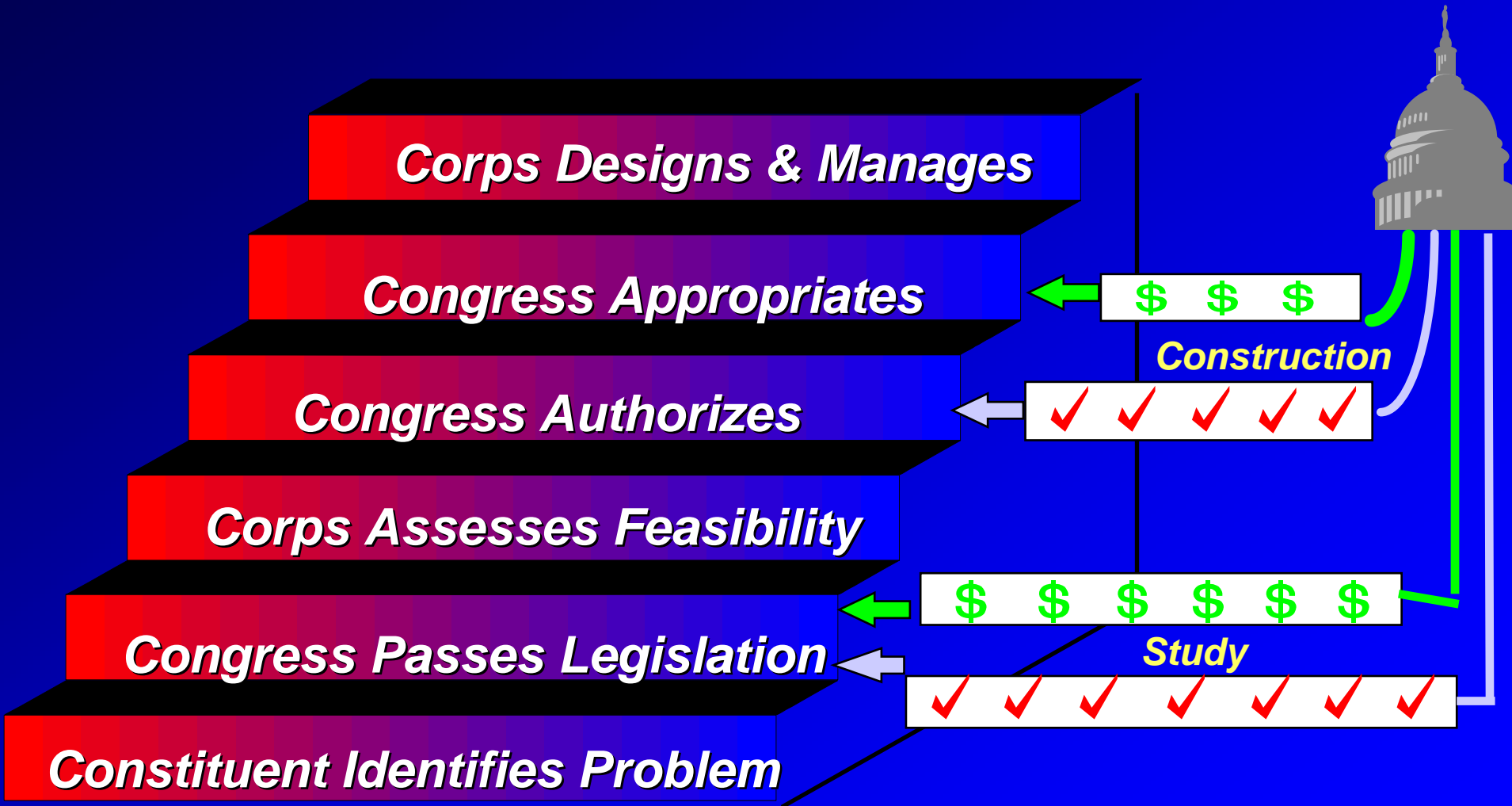
FY 01 Total: \$4.54 Billion (Does not include Support for Others)



Civil Works Appropriation by Business Program, FY 2001



Steps to a Civil Works Project (Not All-Inclusive)



Civil Works



Support to National Defense

◆ ***Power Projection***

- ☰ Inland Waterways
- ☰ Strategic harbors
- ☰ Research labs supporting U.S. operations

◆ ***Overseas Presence***

- ☰ Technical assistance to CINC's
- ☰ Support to foreign nations
- ☰ Expanded port facilities to support CINC's

◆ ***Crisis Response***

- ☰ Response to natural & man-made disasters



Civil Works Focus

- ◆ Relevance to Nation & Army
- ◆ Growth opportunities
- ◆ Environmental balance
- ◆ Enhanced role as problem solvers
- ◆ Steady funding
- ◆ Delighted customers

