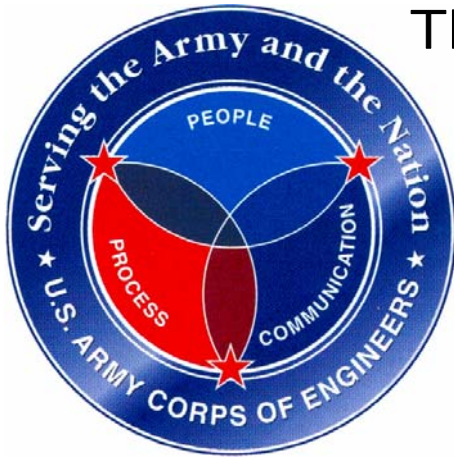


# TABLE OF CONTENTS

	Page
<b>Vision Statement</b> .....	<b>2</b>
<b>Memphis District Overview</b> .....	<b>3</b>
<b>Memphis District Commander Biography</b> .....	<b>5</b>
<b>Mississippi Valley Division Map</b> .....	<b>6</b>
<b>Memphis District Congressional Map</b> .....	<b>7</b>



The U.S. Army Corps of Engineers

# Vision Statement

**The world's premier public engineering organization responding to our nation's needs in peace and war.**

**A full spectrum Engineer Force of high quality, dedicated soldiers and civilians:**



**Trained and ready,**



**A vital part of the Army,**



**Dedicated to public service,**



**An Army values - based organization.**

***One Corps Serving the  
Army and the Nation***

# MEMPHIS DISTRICT OVERVIEW

The Memphis District was created in 1882, and is one of six districts in U.S. Army Corps of Engineers' Mississippi Valley Division. Encompassing almost 25,000 square miles, the Memphis District is responsible for federal civil works projects in portions of six states -- Arkansas, Kentucky, Illinois, Mississippi, Missouri and Tennessee.



**Memphis District**

Commanded by District Engineer Col. Charles O. Smithers III, the district employs 600 federal civil service workers. These professionals and craftsmen provide a broad range of technical capabilities to address the Mid-South region's water resource needs. The Memphis District team includes civil, electrical, structural and mechanical engineers, as well as biologists, economists, clerical workers and many skilled laborers.

In addition to our downtown Memphis headquarters located in the Clifford Davis Federal Building, we also have river engineering and marine mooring facilities in south Memphis at McKellar Lake. We also have field offices located in Wynne, AR, and Caruthersville, MO.



**Flood Protection**

The district has three major mission areas -- flood protection, navigation and environmental stewardship -- with our total civil works program averaging more than \$100 million a year.

On the Mississippi River, the Memphis District maintains a 9-foot-deep, 300-foot-wide navigation channel. The Mississippi River is the heart of a vast inland navigable waterway system that extends for 12,350 miles. Channel improvements and maintenance dredging are primary tools for keeping the Mississippi open. More than 250 million tons of river-borne commodities pass through the district's reach of the river each year.



**Navigation**

The district also maintains levees, pumping stations and floodwalls to protect citizens from the Mississippi River's high waters. Since 1928, the Mississippi River and Tributaries Project has prevented about \$258 billion in flood damage at a total investment of approximately \$11 billion for project construction and maintenance. Since 1993, the Mississippi River has had six floods during high-water season. Over that ten-year period, the MR&T project has prevented almost \$13 billion in flood-related damages in the Memphis District area.



**Environmental Stewardship**

In addition to our main channel navigation and flood protection work, the Memphis District maintains a commercial towing channel in eight harbors. An average of 12 million tons of commodities are loaded and unloaded in these eight harbors each year.

Overall, the Memphis District is a multi-talented public engineering agency that can solve a variety of civil works problems. We assist other government agencies with their engineering challenges through our "Support for Others Program," and we contribute volunteer community services to the people of the Mid-South. Examples of our community service include our Adopt-A-School Program and our Combined Federal Campaign activities. The district is a valuable resource, and we will help the states meet the civil works challenges they face.



**Emergency Management**

Our pledge is to meet the public engineering needs of your constituents with dedication and professionalism.

# BIOGRAPHY



## Colonel Charles O. Smithers III

*Commander, Memphis District*

Colonel Charles O. Smithers III assumed command of the U.S. Army Corps of Engineers, Memphis District, on July 13, 2004. He came to Memphis from the Third U.S. Army/U.S. Army Central Command/Coalition Forces Land Component Command (CFLCC) where he served as the Assistant Chief of Staff, C7 (Engineer), and as the Deputy Chief of Staff.

As Memphis District Commander, he is responsible for flood protection, navigation, and environmental protection on 355 miles of the Mississippi River and its tributaries, covering a 25,000 square mile area between Cairo, Ill., and Rosedale, Miss.

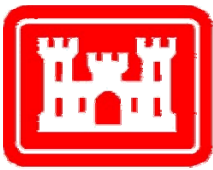
Colonel Smithers entered the Army in 1979 after graduating from the U.S. Military Academy. He has served in command and staff positions from platoon through battalion level, culminating as the Battalion Commander, 14th Engineer Battalion (Combat) (Corps) at Fort Lewis, Wash., from June 1996 until June 1998. He has also served as an Assistant Professor of Mathematics at USMA; as an Army National Guard and Army Reserve Advisor; as the Director of Installation Support, U.S. Army Central Command - Kuwait, at Camp Doha, Kuwait; as the first Commander, U.S. Army Central Command - Qatar, Camp As Sayliyah, Qatar; and as Chief, International Affairs Branch, Directorate of Plans, U.S. Space Command.

During his tour at CFLCC, he deployed to Kuwait for Operation IRAQI FREEDOM, where he synchronized Coalition engineering efforts across the Land Component Commander's Area of Operations. Upon redeployment of CFLCC Atlanta Headquarters in July 2003, he established split-based C7 Battle Staff operations in Kuwait and Atlanta, with responsibility for Army Service Component Command Engineer activities throughout the U.S. Central Command Area of Responsibility, with focus on operations in Iraq, Afghanistan, Qatar and Kuwait.

Colonel Smithers earned a Bachelor of Science degree in Applied Sciences and Engineering from the U.S. Military Academy in West Point, N.Y.; a Master of Science degree in Industrial Engineering from the Georgia Institute of Technology in Atlanta, Ga.; and a Master of Science degree in National Resource Strategy from the Industrial College of the Armed Forces (ICAF), National Defense University at Ft. McNair in Washington, D.C.

Colonel Smithers' decorations include the Legion of Merit with Oak Leaf Cluster, Bronze Star Medal, Defense Meritorious Service Medal, Meritorious Service Medal with four Oak Leaf Clusters, Army Commendation Medal, Army Achievement Medal, Southwest Asia Service Medal with Bronze Star, Global War on Terrorism Expeditionary and Service Medals, Armed Forces Service Medal, Humanitarian Service Medal, Ranger Tab, Parachutist Badge, and two Permanent Unit Awards, which include the Joint Meritorious Unit and Army Superior Unit Awards.

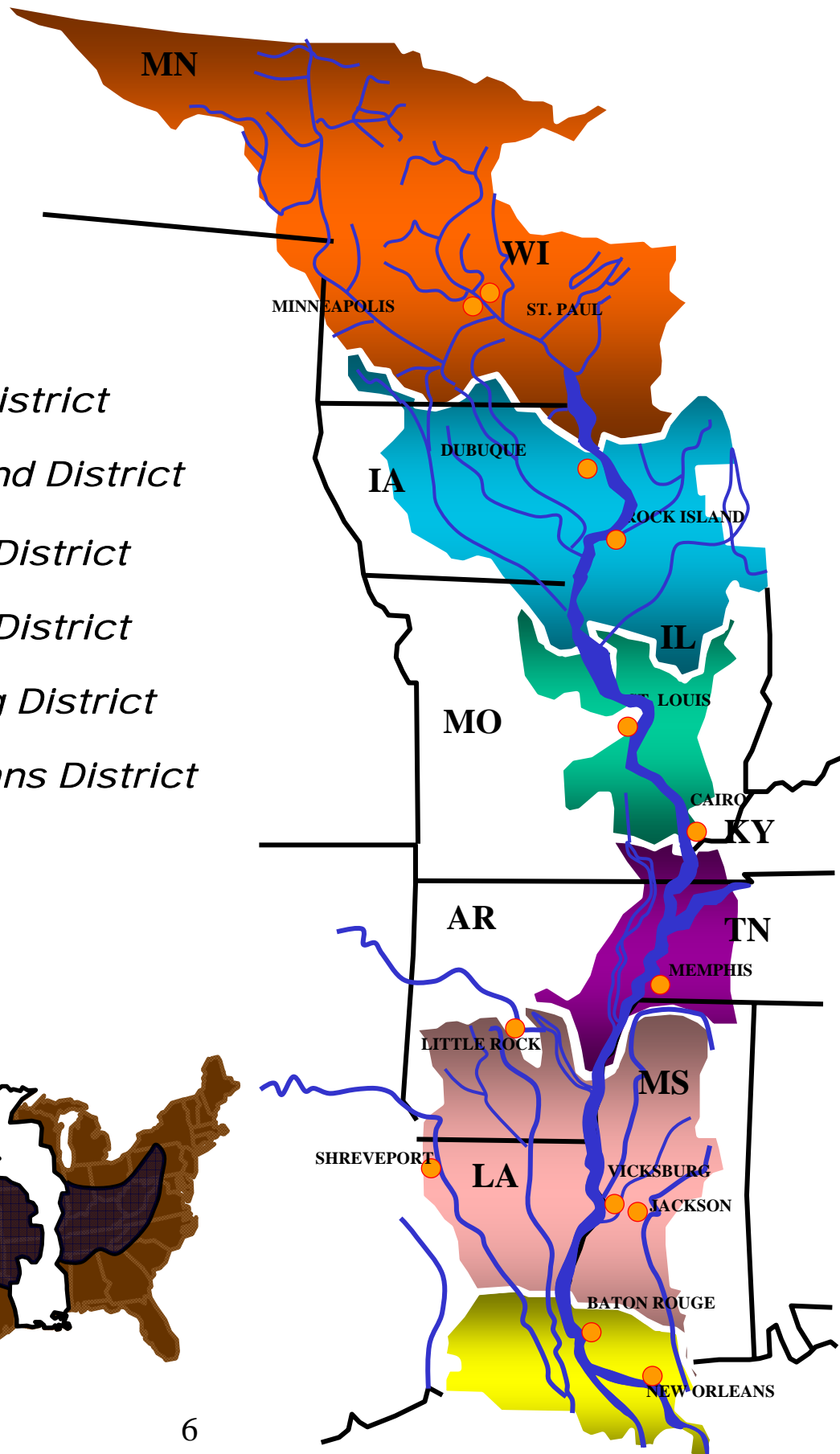
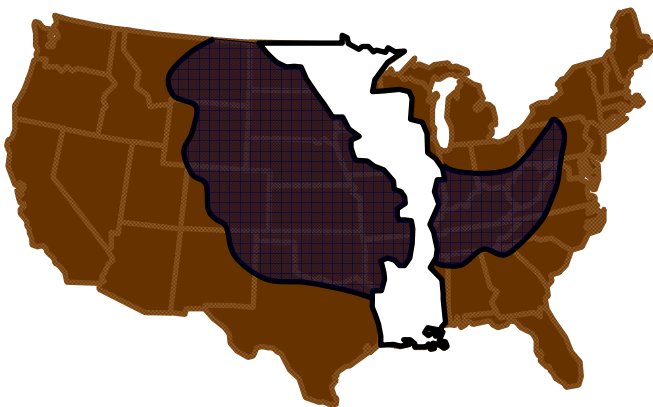
Colonel Smithers was born in Butte, Mont. He is married to Doctor Maureen Arendt Smithers and they have one daughter, Elizabeth, 17, of Brooklyn, N.Y.



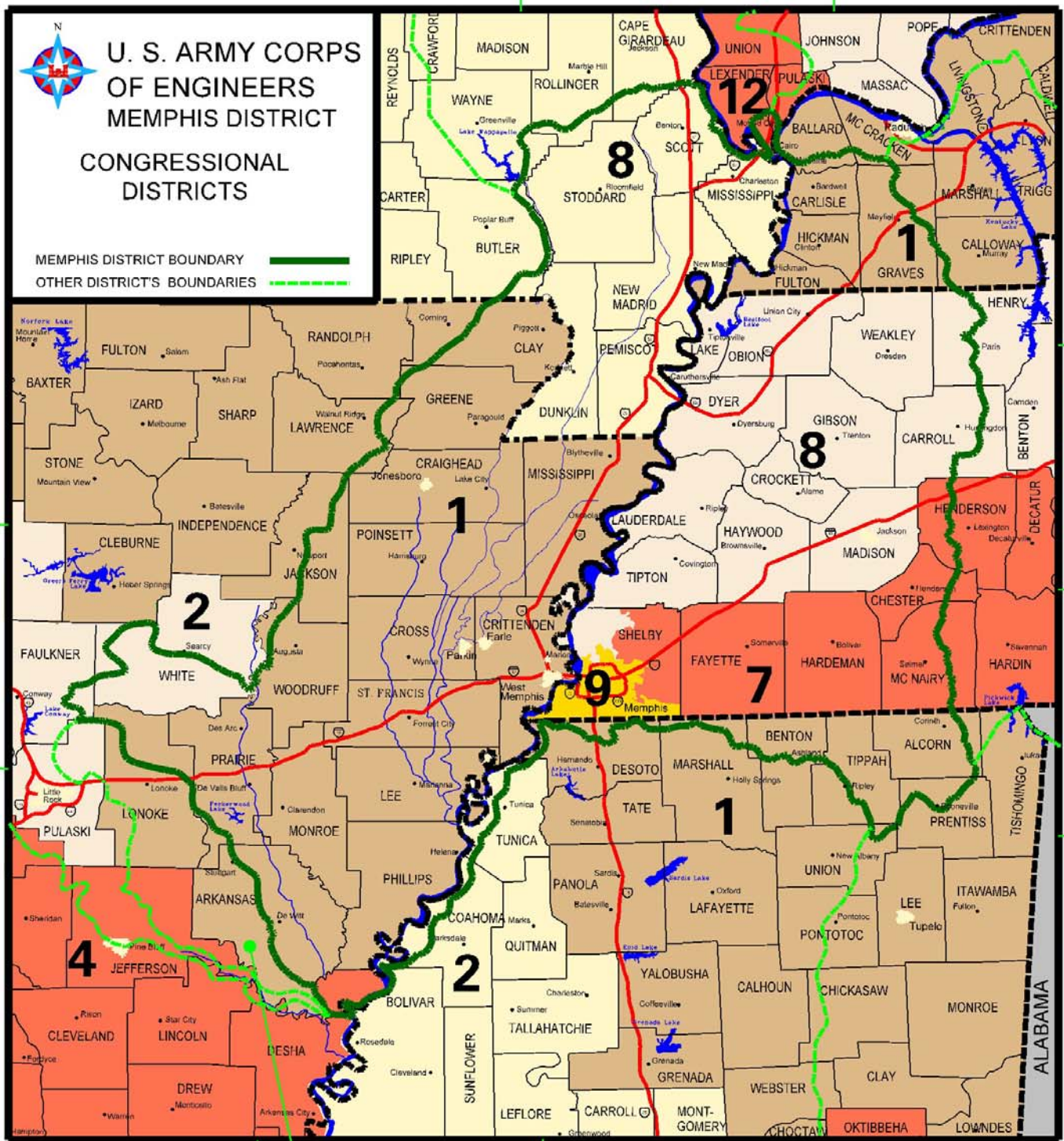
**US Army Corps  
of Engineers®**

# Mississippi Valley Division

-  *St. Paul District*
-  *Rock Island District*
-  *St. Louis District*
-  *Memphis District*
-  *Vicksburg District*
-  *New Orleans District*







AS OF 01 JANUARY 2005

**ARKANSAS**

- GOV. Mike Huckabee (R)
- SEN. Blanche Lambert Lincoln (D)
- SEN. Mark Pryor (D)
- REP. Marion Berry (D AR - 1)
- REP. Victor F. Snyder (D AR - 2)
- REP. Michael A. Ross (D AR - 4)

**ILLINOIS**

- GOV. Rod Blagojevich (D)
- SEN. Richard J. Durbin (D)
- SEN. Barack Obama (D)
- REP. Jerry F. Costello (D IL - 12)

**KENTUCKY**

- GOV. Ernie Fletcher (R)
- SEN. Mitch McConnell (R)
- SEN. Jim Bunning (R)
- REP. Edward Whitfield (R KY - 1)

**MISSISSIPPI**

- GOV. Haley Barbour (R)
- SEN. Thad Cochran (R)
- SEN. Trent Lott (R)
- REP. Roger Wicker (R MS - 1)
- REP. Bennie Thompson (D MS - 2)

**MISSOURI**

- GOV. Matt Blunt (R)
- SEN. Christopher Bond (R)
- SEN. Jim Talent (R)
- REP. Jo Ann Emerson (R MO - 8)

**TENNESSEE**

- GOV. Phil Bredesen (D)
- SEN. Bill Frist (R)
- SEN. Lamar Alexander (R)
- REP. Marsha Blackburn (R TN - 7)
- REP. John Tanner (D TN - 8)
- REP. Harold Ford, Jr. (D TN - 9)