

3346000X

3348000X

3350000X

3352000X

562000Y

562000Y

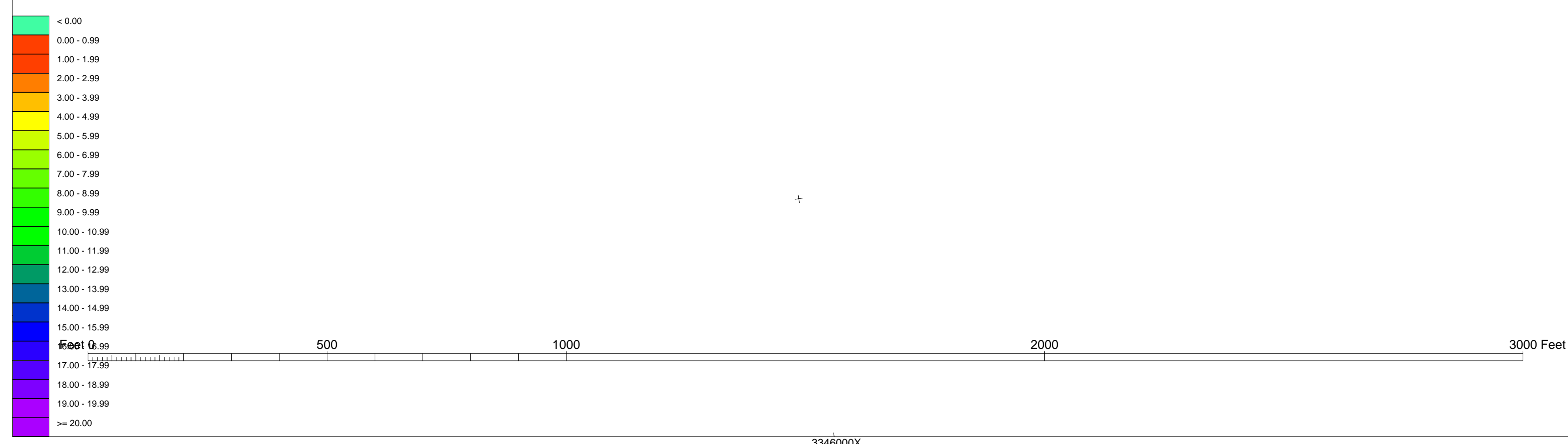
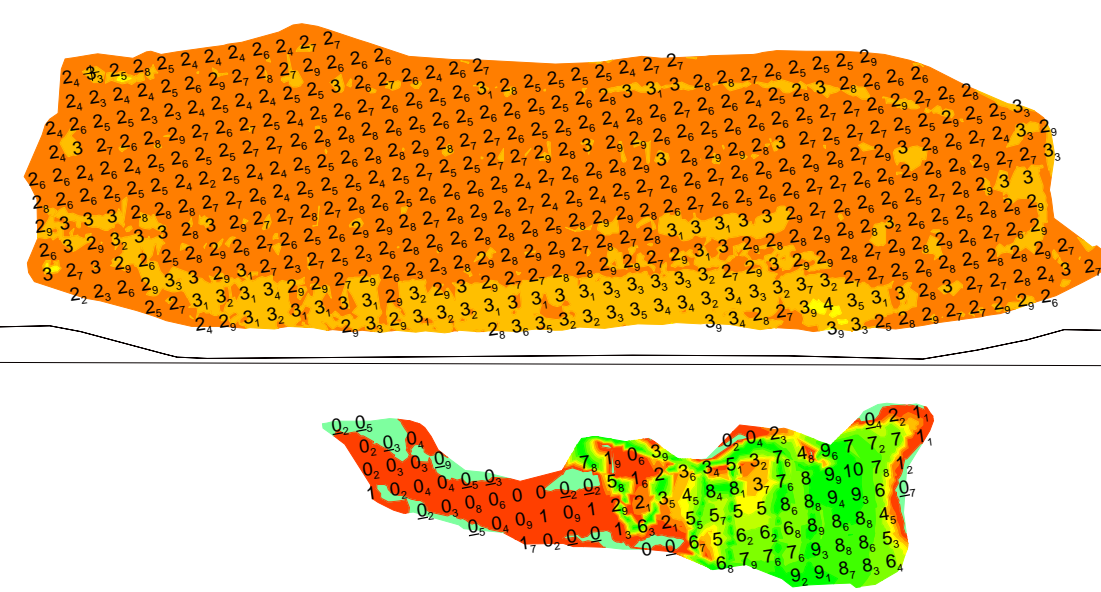
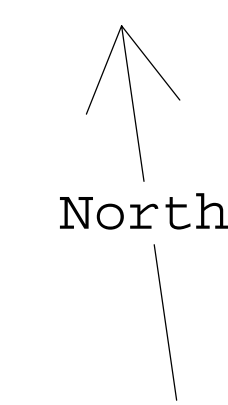
562000Y

562000Y

562000Y

3352000X

562000Y



P8_RENOSPILLWAY_20070517_LOCK_8_10_10_06				ASV
U.S. ARMY ENGINEER DISTRICT CORPS OF ENGINEERS ST. PAUL RENO SPILLWAY MILE SOUNDINGS REDUCED FROM L.C.P. MSL 1912 ADJ MN SOUTH				
DGPS NAD 83		ACRES = 8.9		CONTOURS 1'
KLR JRB	SCALE 1" = 200	DATE 17 MAY 2007, 10 OCT 2006	•	
LAUNCH: 21, SKIFF		W.S 630.1, 620.6	L.C.P. 630.0, 620.0	

3346000X

3348000X

3350000X