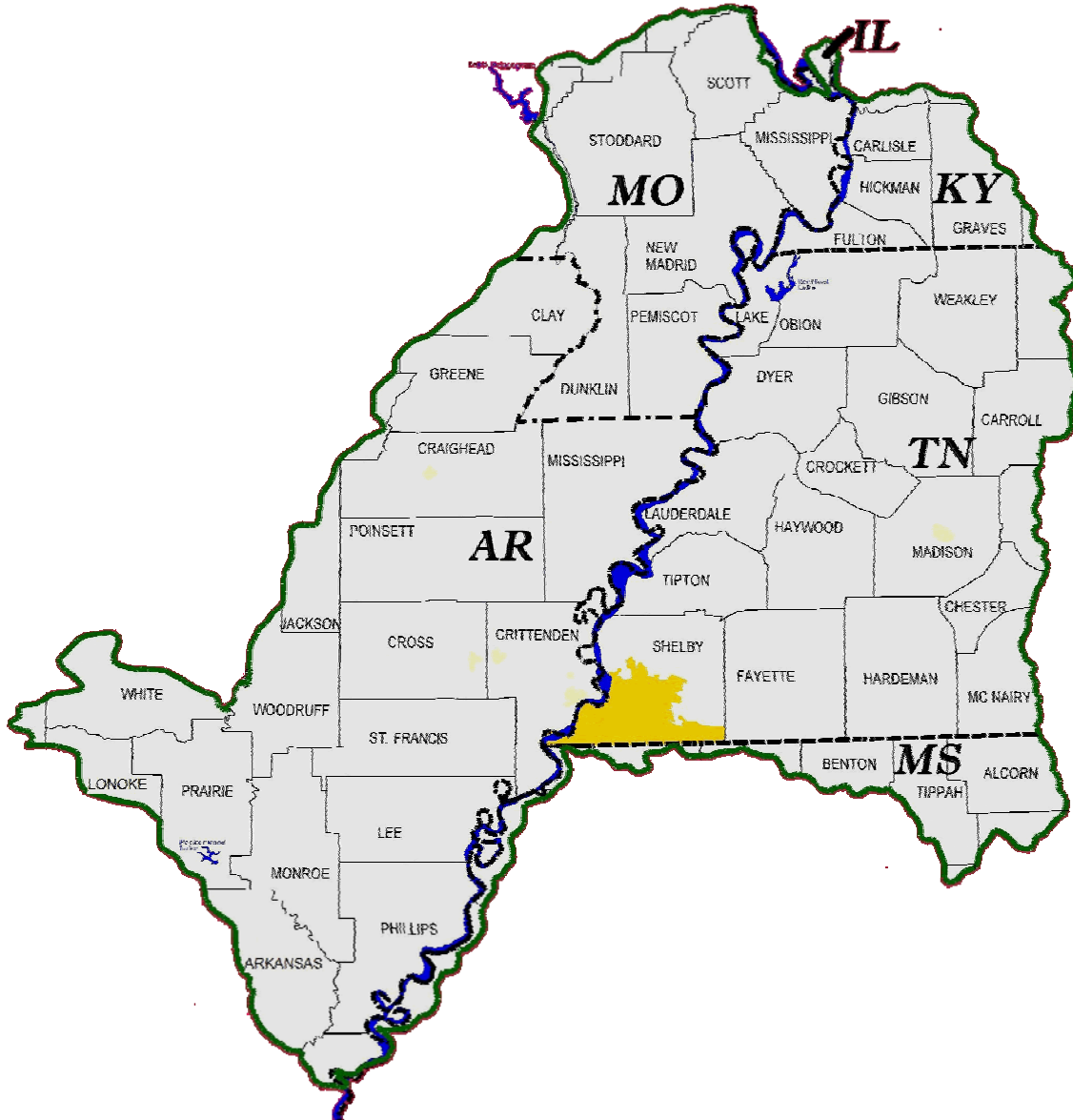




US Army Corps
of Engineers
Memphis District



MEMPHIS DISTRICT



MISSISSIPPI RIVER LEVEES

(MEMPHIS DISTRICT PORTION ONLY)

FACT SHEETS AND MAPS



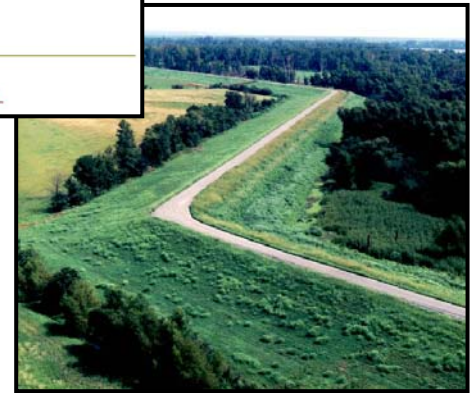
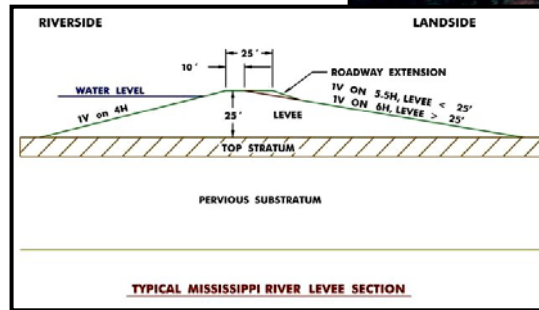
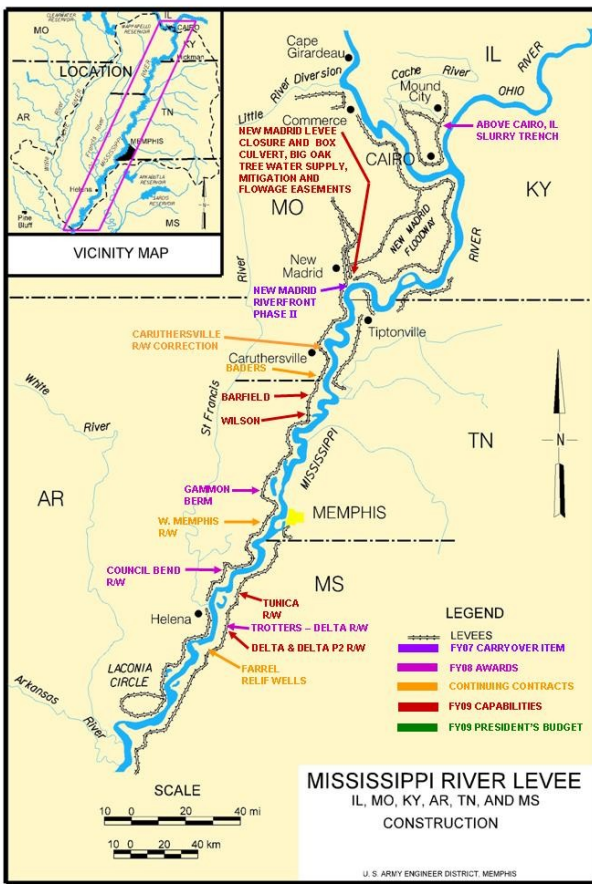
One Corps Serving The Armed Forces and The Nation





Table of Contents

Projects	Page
Mississippi River Levees (MRL), AR, IL, KY, MS, MO & TN / MR&T Construction	2
New Madrid, MO Riverfront Phase II	3
Cairo, Illinois, Mainline Levee	4
Goose Pond Pump Station, Cottonwood Slough Pump Station, and 10 th & 28 th Street Pump Stations	5
Mississippi River Levees, AR, IL, KY, MS, MO & TN / MR&T Maintenance	6



Project Name: Mississippi River Levees (MRL), AR, IL, KY, MS, MO & TN - Construction

Authority: Flood Control Act of 1928, as amended.

Location and Description: The Mississippi River Levee System provides flood protection to rural, agricultural and urban areas in the Lower Mississippi Valley Division. In the Memphis District, the levee system extends from Allenville, Missouri, on the Little River Headwater Diversion Channel to the vicinity of the mouth of the White River in Arkansas on the west bank, and from Hickman, Kentucky, to the Coahoma-Bolivar County line in Mississippi on the east bank, except where interrupted by high ground and tributary streams. Included in the system is the portion of the levee on the Ohio River that protects Mounds and Mound City, Illinois and the New Madrid Floodway Levees. Approximately 626 miles of the mainline levee in the district are completed to approved grade and section out of the 637.8 miles authorized. Local interests are required to provide all rights of way for levees on the Main Stem of the Mississippi River.

Status: FY 2008 funds of \$11,504,000 are being used to initiate and complete Trotters – Delta, MS Relief Wells, Gammon Seepage Control & Council Bend, AR Relief Wells, and Cairo, IL Slurry Trench. In addition funds are being used to provide supervision and administration as well as engineering and design during construction for four projects awarded in FY07. The FY08 funds are also being used to advance designs for future FY construction items and to acquire mitigation lands. A part of the MRL funds are allocated toward the MRL features associated with the St. Johns Bayou-New Madrid Floodway project. The ability to do this work depends on resolution of current litigation.

Project cost: The estimated cost of the Memphis District portion of MRL project is \$786,000,000 of which \$742,000,000 is Federal cost and \$44,000,000 is the responsibility of the non-Federal sponsor.

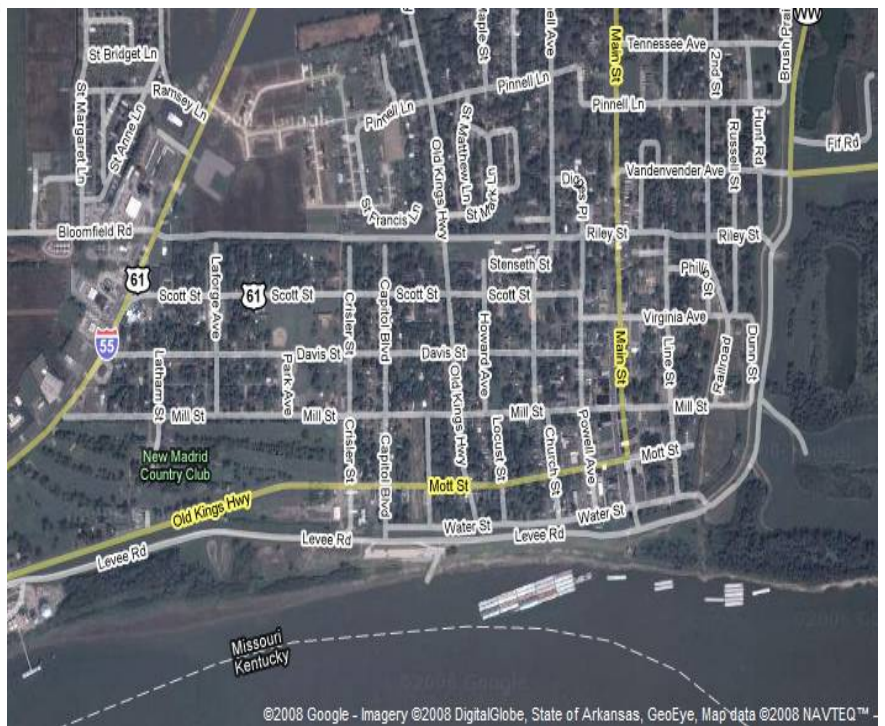
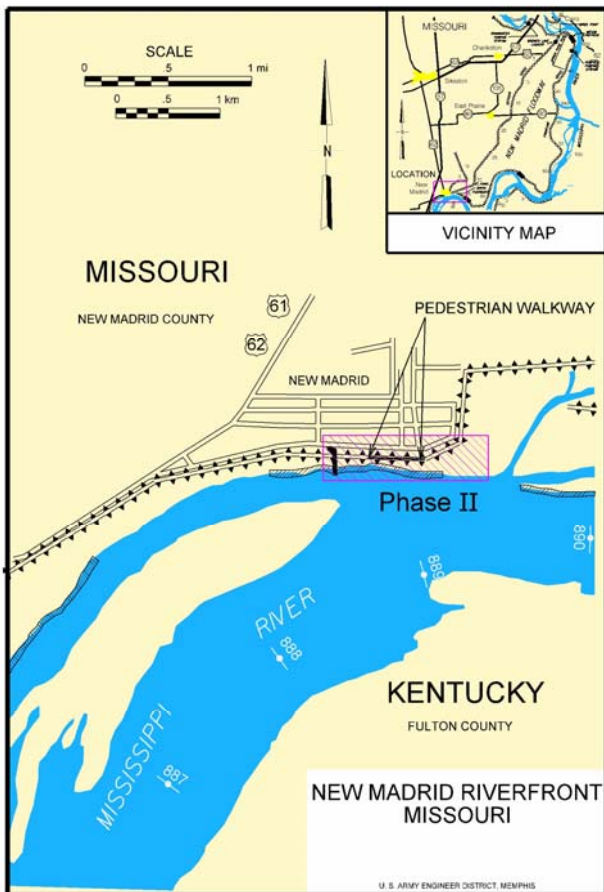
Memphis District POC:

Name: Dennis Abernathy

Phone: 901-544-0798

E-mail address: Dennis.W.Abernathy@usace.army.mil

As of: June 2008



Project Name: Phase II Riverfront Improvements at New Madrid, MO

Authority: Language in the FY 2002 House Report on Energy and Water Development Appropriations.

Location and Description: The Corps was to construct riverfront improvements at New Madrid, MO under the Mississippi River Levees authority, defined the minimum improvements to be constructed and provided funds (\$4,100,000) to construct the item.

Status: FHWA will transfer the funds to the Corps following ASA(CW) approval and execution of the Project Partnership Agreement (PPA). The PPA has been prepared, submitted and approved by MVD and HQ USACE. HQ USACE submitted package to ASA(CW) 30 May 2008 for approval. A tentative schedule for Phase II which includes: ASA(CW) Approval to Execute the PPA (June 2008), Execute PPA (July 2008), Advertise for Construction Bids (August 2008), and Award Construction Contract (October 2008).

Phase I, completed in September 2004, consists of a boat ramp with expanded parking, a section of lighted levee walkway, and levee terraces on the levee slope, fill material and sod on the levee riprap to facilitate maintenance of the levee by the local interests. No cash contributions were required from the sponsor for this part of the work, since these features are considered to be necessary for public health and safety and may be constructed at 100% Federal Cost.

Phase II features consist of approximately 1,400 feet of pedestrian walkway on the levee crown. Phase II improvements, which are recreational in nature, will require 50% cost sharing by the local sponsor. The sponsor received approval of a \$400,000 grant to contribute to this work via the Federal Highway Administration (FHWA) Transportation Enhancement Fund to match the Corps' contribution of \$400,000, for a total of \$800,000. These funds will be used to build the lighted pedestrian walkway on the crown of the levee.

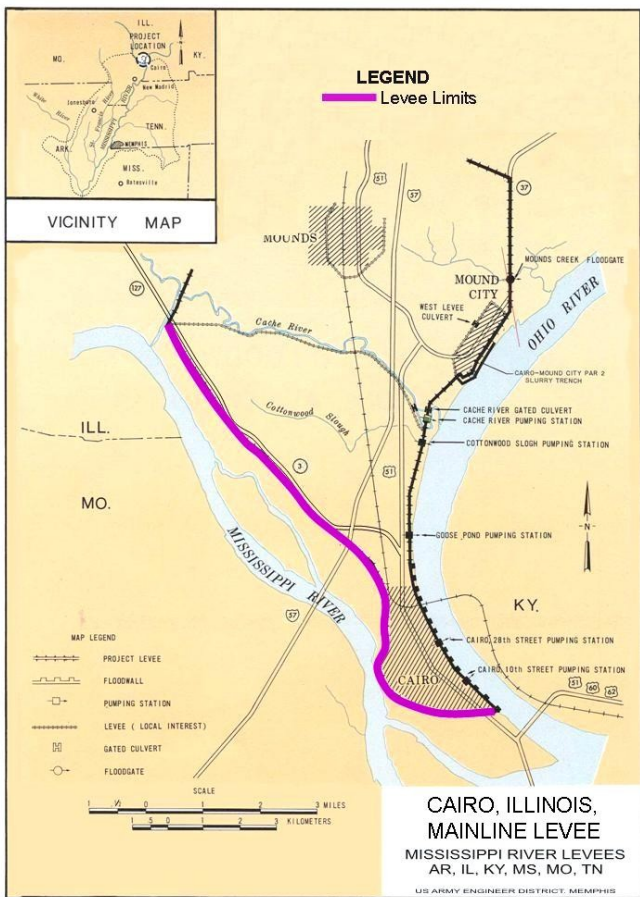
Memphis District Point of Contact:

Name: Billy Dycus

Phone: 901-544-3455

E-mail address: Billy.Dycus@usace.army.mil

As of: June 2008



Project: Cairo, Illinois, Mainline Levee - Mississippi River Levees

Authority: Section 5070 of WRDA 2007 includes language that would allow the Secretary to participate in the reconstruction of the Cairo Mainline Levee if the reconstruction is not required as a result of improper operation and maintenance of the project by the non-Federal interest. The language does not release the sponsor's requirement to provide rights-of-way for the borrow pits and additional levee foot print.

Location and Description: Work to raise the levee at Cairo, IL, was completed in the fall of 2002. The Cairo levee was raised between approximate levee miles 10 to 20 along the left descending bank of the Mississippi River. The grade increase was required to provide the authorized level of protection, which is the Project Design Flood (PDF) flowline plus freeboard. The original design indicated that a levee raise of 1 to 1.5 feet along most of the levee reach would be needed. In reality, the levee had to be raised 3 to 4 feet in the middle and upper reaches of the levee to achieve the authorized grade. Though the levee road is only intended for use in operating and maintaining the levee, local farmers use the levee road to transport their crops to market. The Cairo levee could also be used as an escape route for Cairo residents during flood emergencies. The completed levee grade raise has resulted in a levee crown width that is narrower than authorized, and unsafe for two-way traffic. The local sponsor is the Cairo Drainage District. The drainage district President has expressed concern about maintaining the levee. The levee slopes are steep, not well-compacted and are difficult to mow. The drainage district President has requested the Corps' assistance in finding a solution to these problems.

Status: The existing levee cannot safely accommodate two-way traffic for maintenance and flood fight operations and the side slopes are too steep to permit safe mowing. The Memphis District has been unsuccessful in identifying a solution that negates the requirement for additional rights-of-way adjacent to the levee or for the borrow material. Funds could be used to finalize design documents and thus the non-Federal sponsors' requirements for rights-of-way. As the non-Federal sponsor currently does not have the financial capability to acquire rights-of-way, construction activities are not being scheduled.

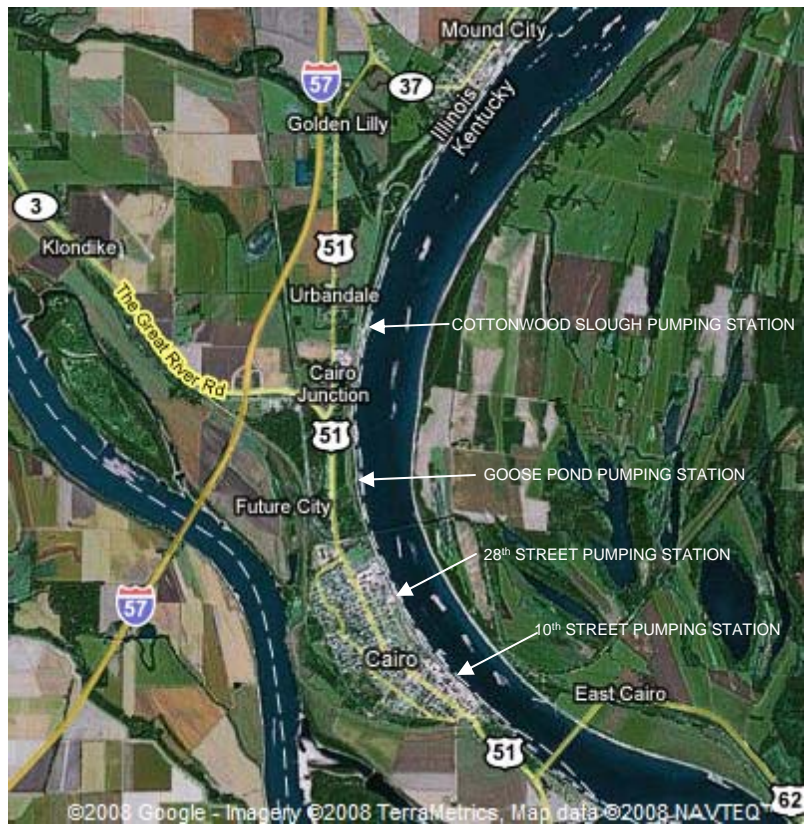
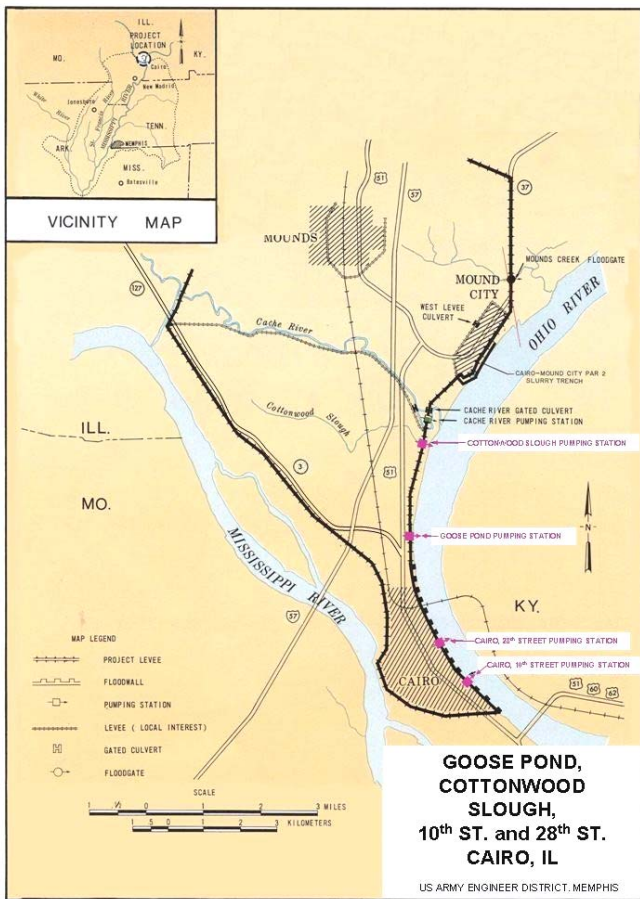
Memphis District POC:

Name: Billy Dycus

Phone: 901-544-3455

E-mail address: Billy.Dycus@usace.army.mil

As of: February 2008



Project Name: Goose Pond Pump Station, Cottonwood Slough Pump Station, and 10th & 28th Street Pump Stations

Authority: WRDA 2007, Sec. 5070, Reconstruction of Illinois and Missouri Flood Protection Projects

Location and Description: Eligible projects listed in this authorization included Goose Pond Pump Station, Cottonwood Slough Pump Station, and 10th & 28th Street Pump Stations. The Goose Pond Pump Station, located along the Ohio River levee north of Cairo between Highway 51 and the Ohio River, was completed in 1975 and was turned over to the Cairo Drainage District for operation and maintenance. The Cottonwood Slough pump station, located along the Ohio River levee between Mound City and Cairo at about mile 975 on the Ohio River, was completed 1964 and was turned over to the Cairo Drainage District for operation and maintenance. The 10th Street and 28th Street pump stations are located within the city limits of Cairo, IL along the Ohio River, were completed in 1979 and turned over to the City of Cairo, IL for operation and maintenance. The four pumping stations, integral parts of the flood protection structures built to protect Cairo, IL and vicinity, are in need of major rehabilitation. The stations have fallen into disrepair and the equipment is outdated.

Status: The equipment in the pumping stations is outdated and virtually inoperable. No major renovations have been done since the pumping stations were turned over to the City of Cairo, IL, and the Cairo Drainage District for operation and maintenance. Operation of the pumping stations during times of emergency is questionable.

Project cost: The estimated cost of the project Reevaluation is Federal cost of \$100,000.

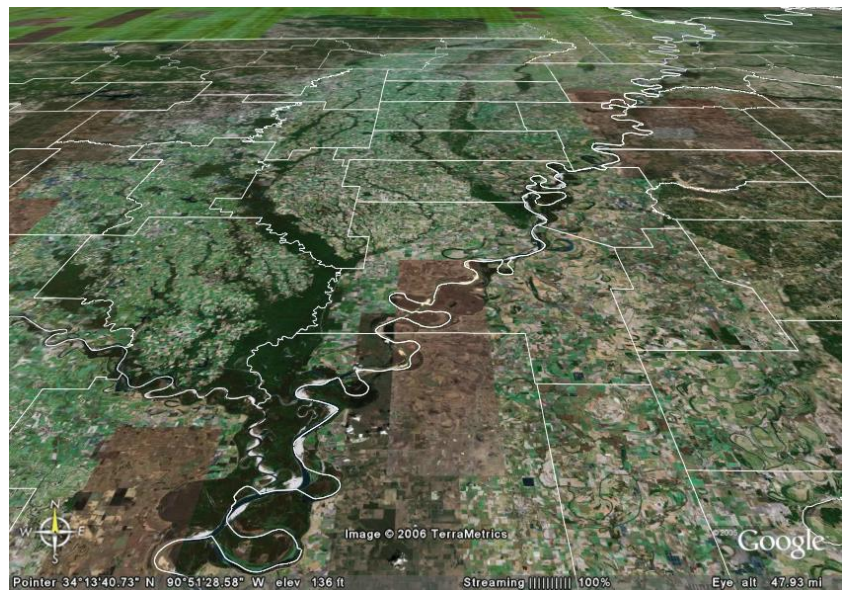
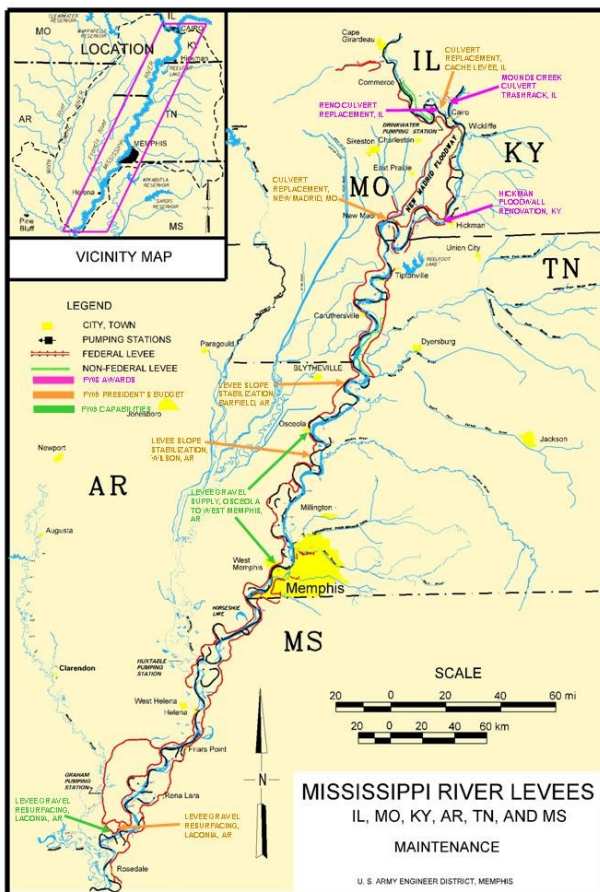
Memphis District POC:

Name: Laura Rowland

Phone:

E-mail address: Laura.Rowland@usace.army.mil

As of: February 2008



Project Name: Mississippi River Levees, AR, IL, KY, MS, MO & TN - Maintenance

Authority: Flood Control Act of 15 May 1928, as amended.

Location and Description: The Mississippi River Levee (MRL) system on the west bank extends from Allenville, Missouri, on the Little River Diversion Channel generally southward to the vicinity of Venice, Louisiana. On the east bank the MRL system begins at Hickman, Kentucky, and ends opposite Venice, Louisiana, except where interrupted by hills and tributary streams. The project provides for the maintenance of authorized facilities for the protection against headwater floods of the Mississippi River by means of levees, berms, culverts, outlet structures and floodwalls. Major maintenance of the authorized features of the Mississippi River Levees Project is 100% Federally funded. Local interests are responsible for providing minor maintenance and rights-of-way.

Status: FY 2008 allocation funds of \$4,723,000 are being used for; Levee Slide Repairs in AR, IL, MO; Test and Rehabilitate Relief Wells, MO; Repair / Rehabilitate Levee and Structure Staff Gages and Mileposts in IL, KY, TN, MS, AR, MO; Mounds Creek Culvert Trashrack, IL; Reno Culvert Replacement – Cache Levee, IL; Hickman Floodwall Renovation, KY; Lands & Damages, Cultural Resources, Engineering, Design, Construction Management AR, IL, KY, MS, MO, TN and Operation and Maintenance of one pumping station in Missouri

Memphis District POC:

Name: Laura Rowland

Phone: 901-544-4018

E-mail address: Laura.Rowland@usace.army.mil

As of: February 2008