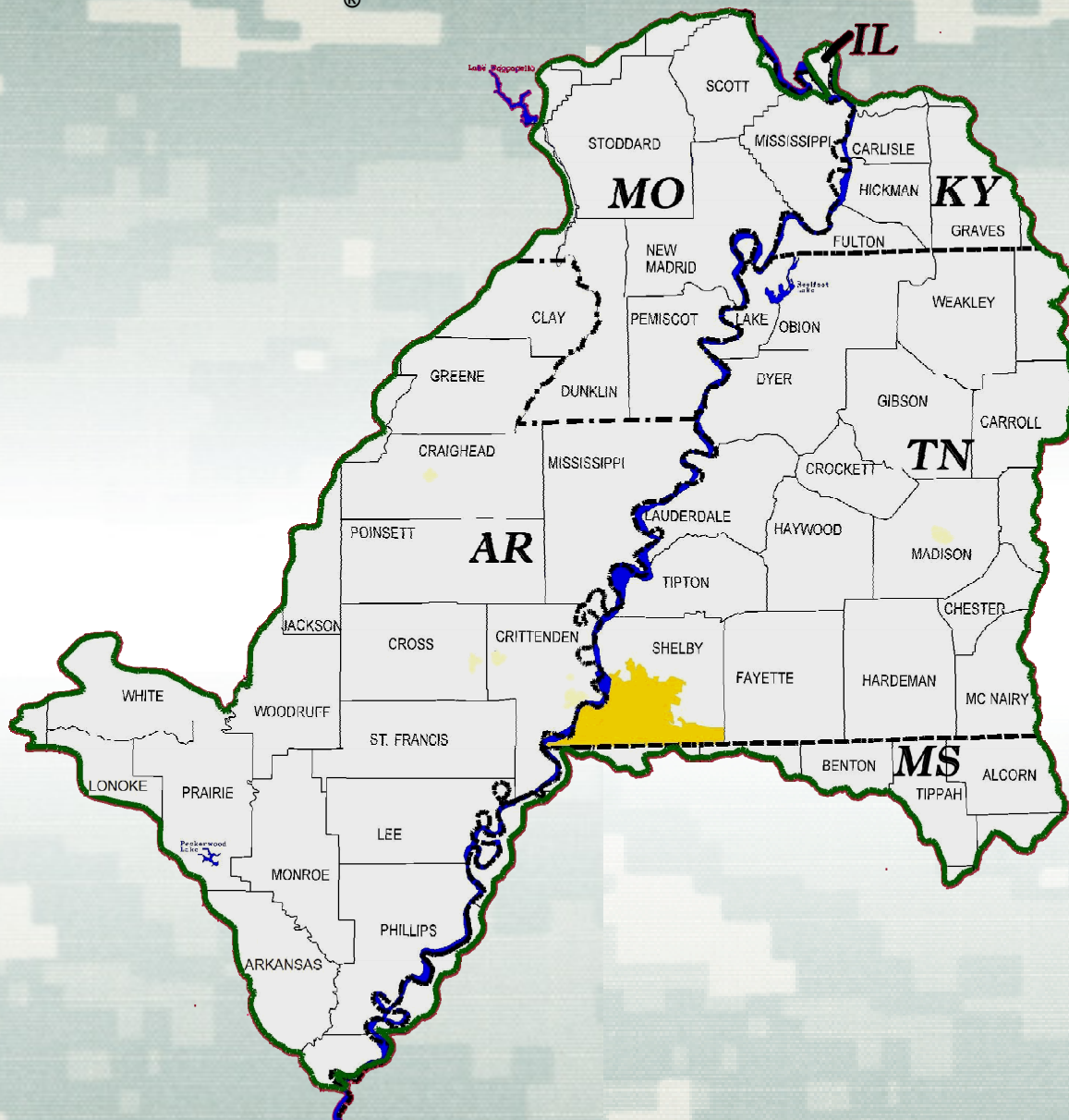




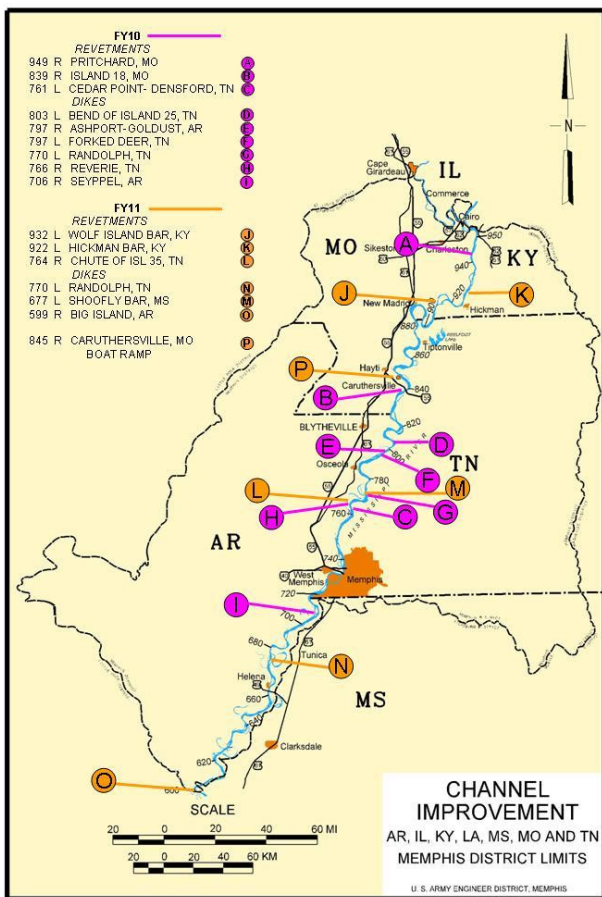
MEMPHIS DISTRICT

US Army Corps of Engineers
BUILDING STRONG®



**CHANNEL IMPROVEMENT,
AR, IL, KY, MS, MO, TN**
(MEMPHIS DISTRICT PORTION ONLY)

FACT SHEET AND MAP



CLICK ON
MAP OR
IMAGES TO
ENLARGE



Project Name: Channel Improvement, AR, IL, KY, MS, MO, TN (Memphis District portion of the project only)

Authority: 1928 Flood Control Act, as amended.

Location and Description: The Memphis District portion of the project limits is defined by the Mississippi River from Cairo, Illinois (mile 953.8 Above Head of Passes), to the mouth of the White River (mile 599.0 Above Head of Passes), approximately 355 river miles, of which 229 miles are located adjacent to Arkansas. In addition, the project limits include the right bank of the Ohio River from its confluence with the Mississippi River to Mound City, Illinois, approximately 7 miles. The plan of improvement consists of stabilizing the banks of the Mississippi River to a desirable alignment and obtaining the most efficient flow characteristics for flood control and navigation by means of revetments, dikes, and improvement dredging. The project has a benefit-to-cost ratio of 36 to 1 and a remaining benefits-to-cost ratio of 51.4 to 1.

Status: FY 2010 E&W funds (\$11,709,000) are being used for revetment construction at Island 18, MO; Cedarpoint-Densford, TN; Pritchard, MO; as well as dike construction at Randolph, TN and Seyppel, AR. ARRA funds are being used for dike construction at Ashport Goldust/Forked Deer, AR-TN; Bend of Island 25, TN bendway weirs; and Reverie, TN bendway weirs.

Other Information: ARRA funds were used in FY 2009 for Dike Construction at Cow Island, AR and Loosahatchie Bar, TN; as well as additional revetment construction.

Project cost: The estimated cost of the project is \$1,534,900,000 of which \$1,533,000,000 is Federal cost and \$1,900,000 is the responsibility of the non-Federal sponsor.

Memphis District POC:

Name: Derrick Smith

E-mail address: Derrick.A.Smith@usace.army.mil

As of: 3 March 2010

FY10

REVETMENTS

- 949 R PRITCHARD, MO
- 839 R ISLAND 18, MO
- 761 L CEDAR POINT- DENSFORD, TN

DIKES

- 803 L BEND OF ISLAND 25, TN
- 797 R ASHPORT-GOLDUST, AR
- 797 L FORKED DEER, TN
- 770 L RANDOLPH, TN
- 766 R REVERIE, TN
- 706 R SEYPPPEL, AR

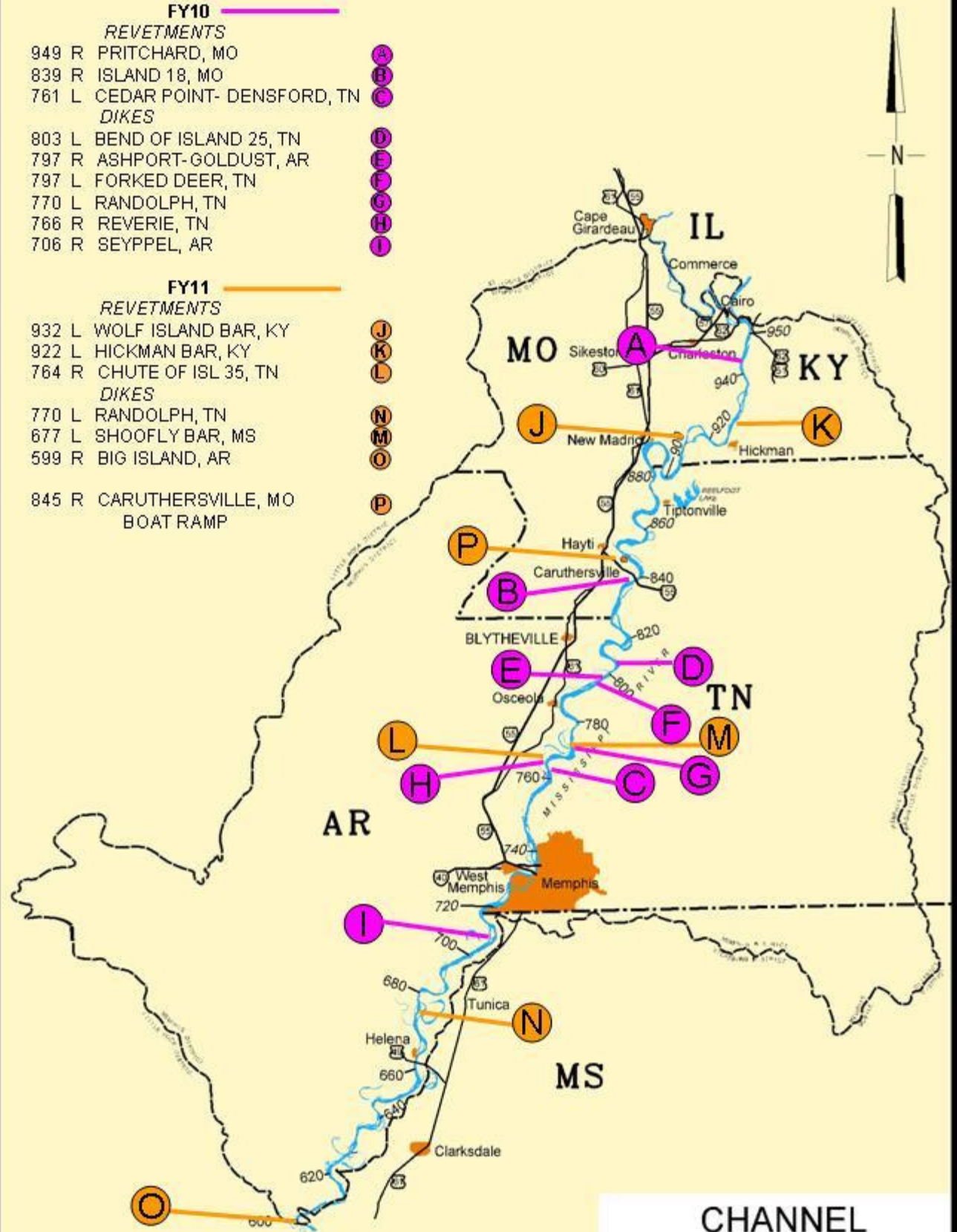
FY11

REVETMENTS

- 932 L WOLF ISLAND BAR, KY
- 922 L HICKMAN BAR, KY
- 764 R CHUTE OF ISL 35, TN

DIKES

- 770 L RANDOLPH, TN
- 677 L SHOOFLY BAR, MS
- 599 R BIG ISLAND, AR
- 845 R CARUTHERSVILLE, MO
- BOAT RAMP



**CHANNEL
IMPROVEMENT**
AR, IL, KY, LA, MS, MO AND TN
MEMPHIS DISTRICT LIMITS

Typical Dike Construction



Bank Protection Operations

