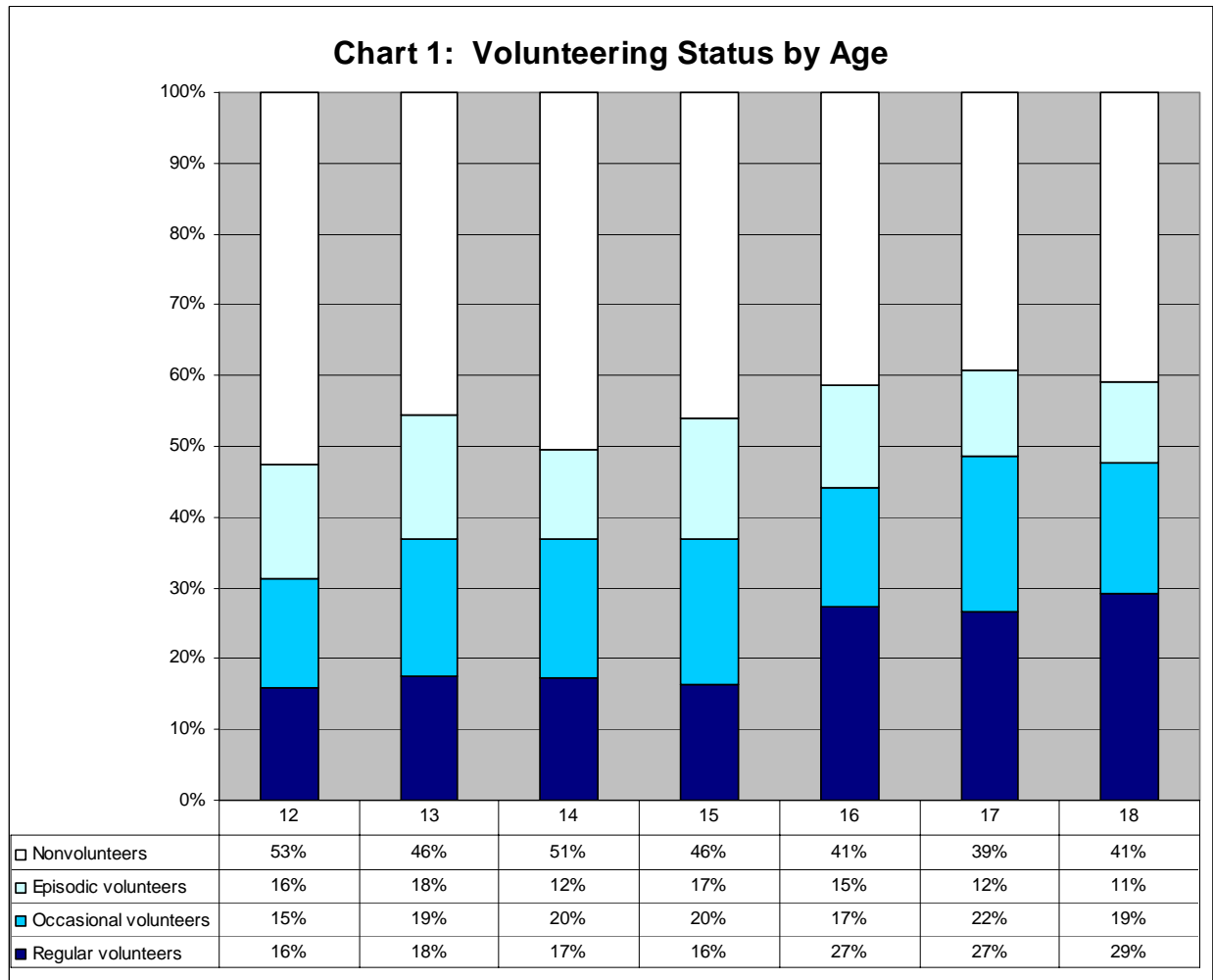


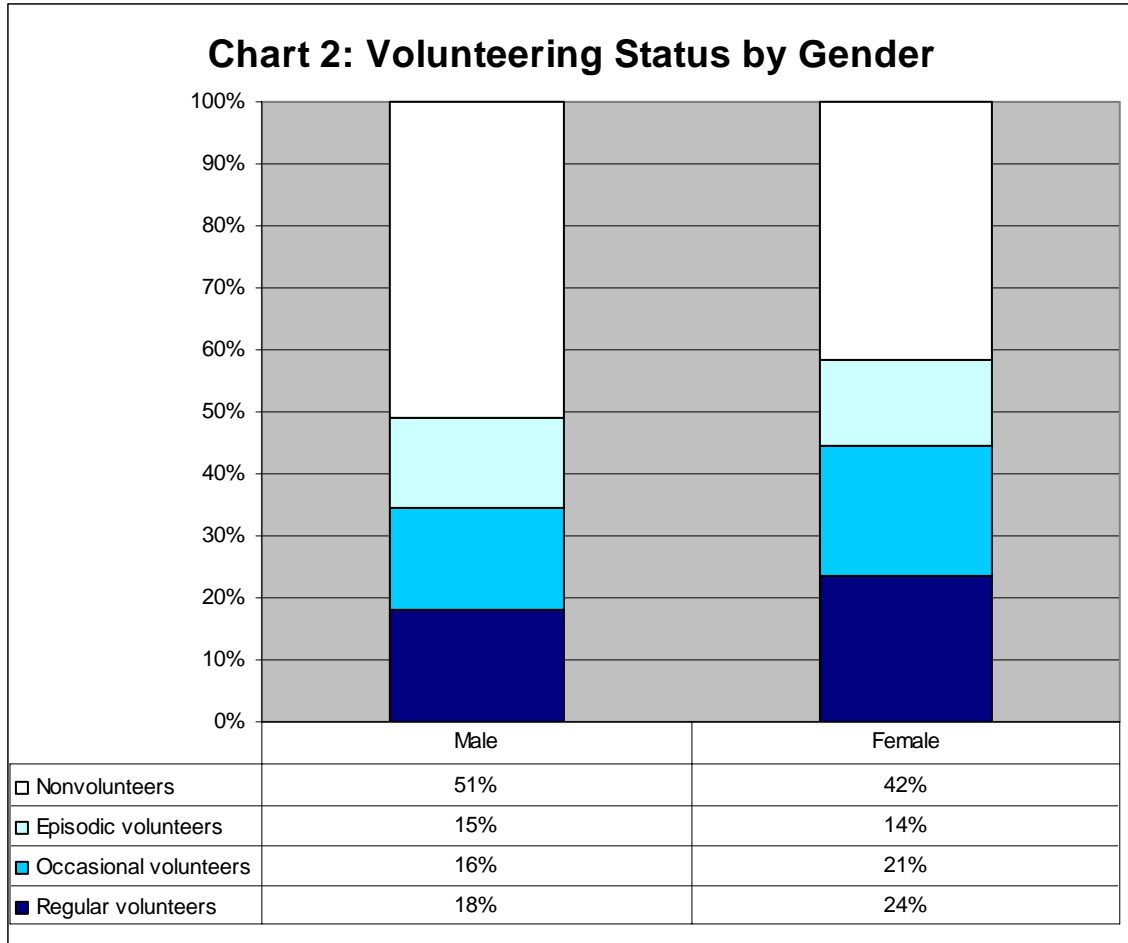
**Additional Demographic Results for “The Role of Social Institutions in Teen Volunteering”**

General note: The charts are constructed using the weighted data.

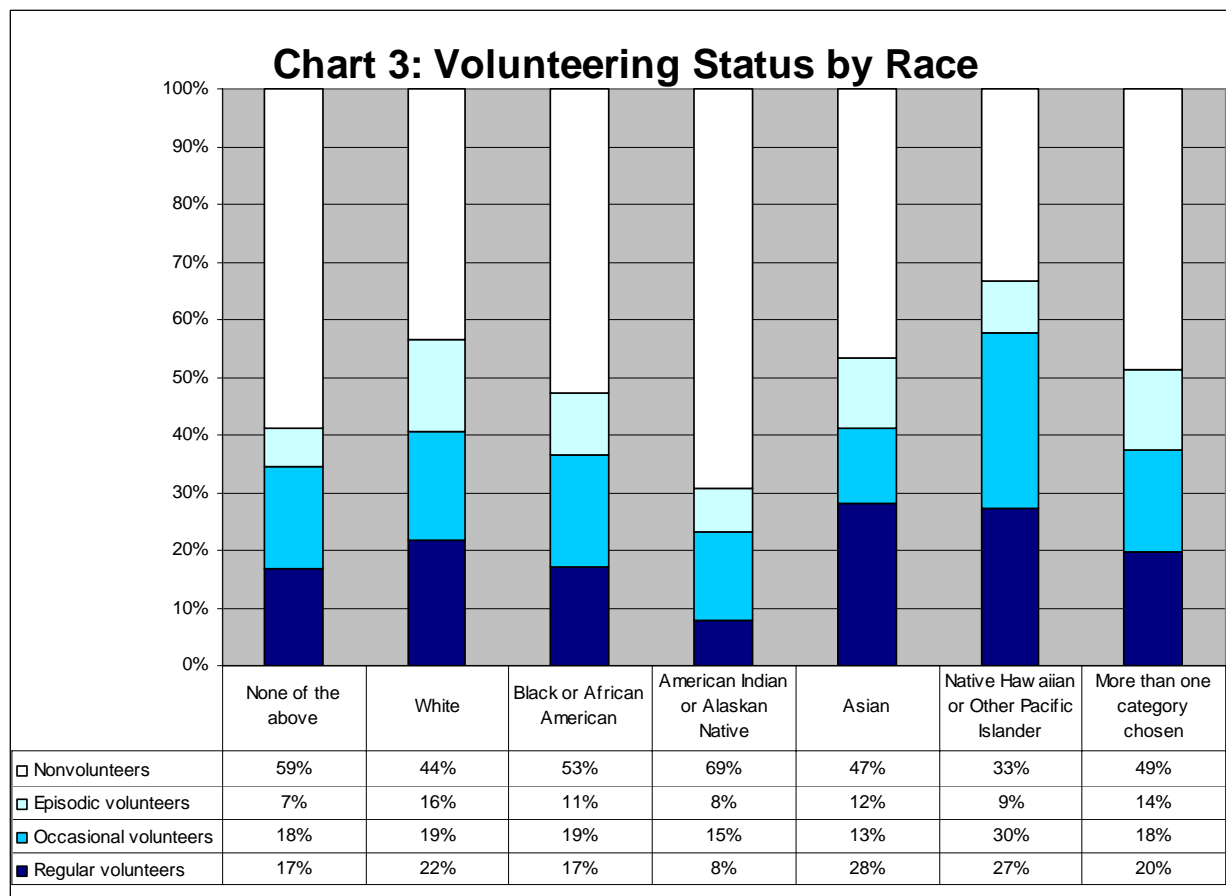


**NOTE:** This chart only contains data for students who were enrolled in school at the time of the survey.

Counts: Age 12 = 523 respondents; Age 13 = 481 respondents; Age 14 = 529 respondents; Age 15 = 459 respondents; Age 16 = 462 respondents; Age 17 = 436 respondents; Age 18 = 195 respondents.



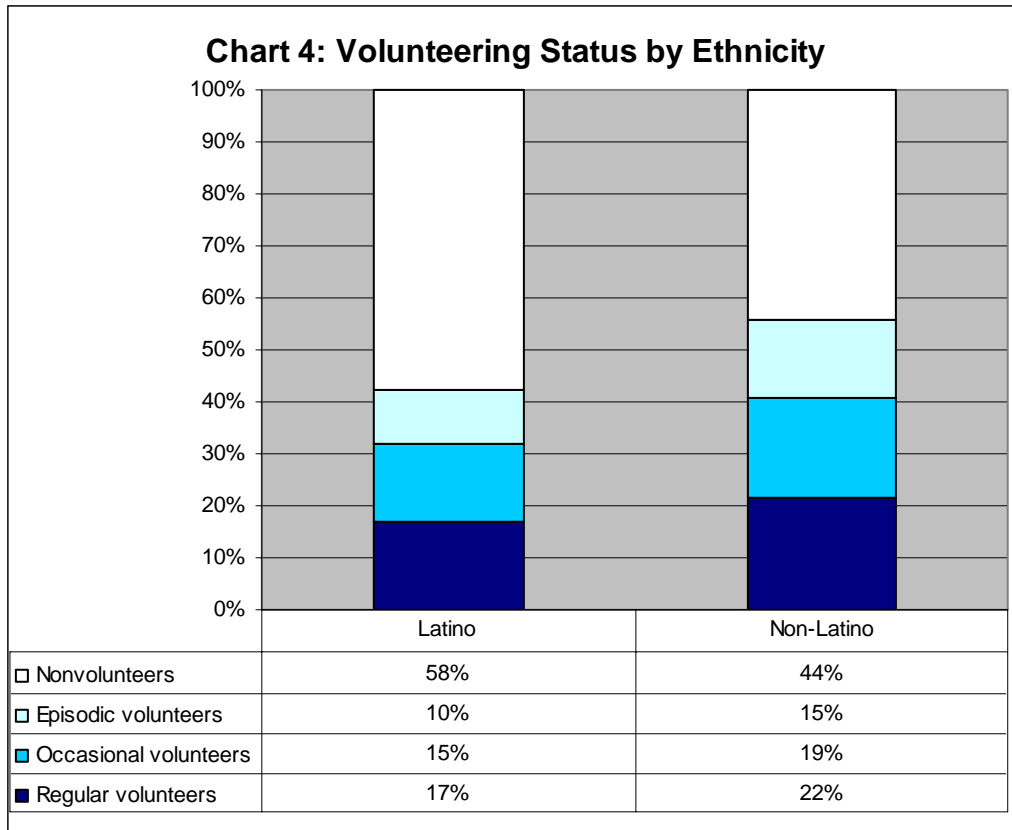
Counts: Male = 1,601 respondents; Female = 1,577 respondents.



NOTE: This version of the chart has the results for all the race questions coded into a single variable. The questions each take the form: Would you describe yourself as: [White?] [Black/African American?] [Asian?], etc.

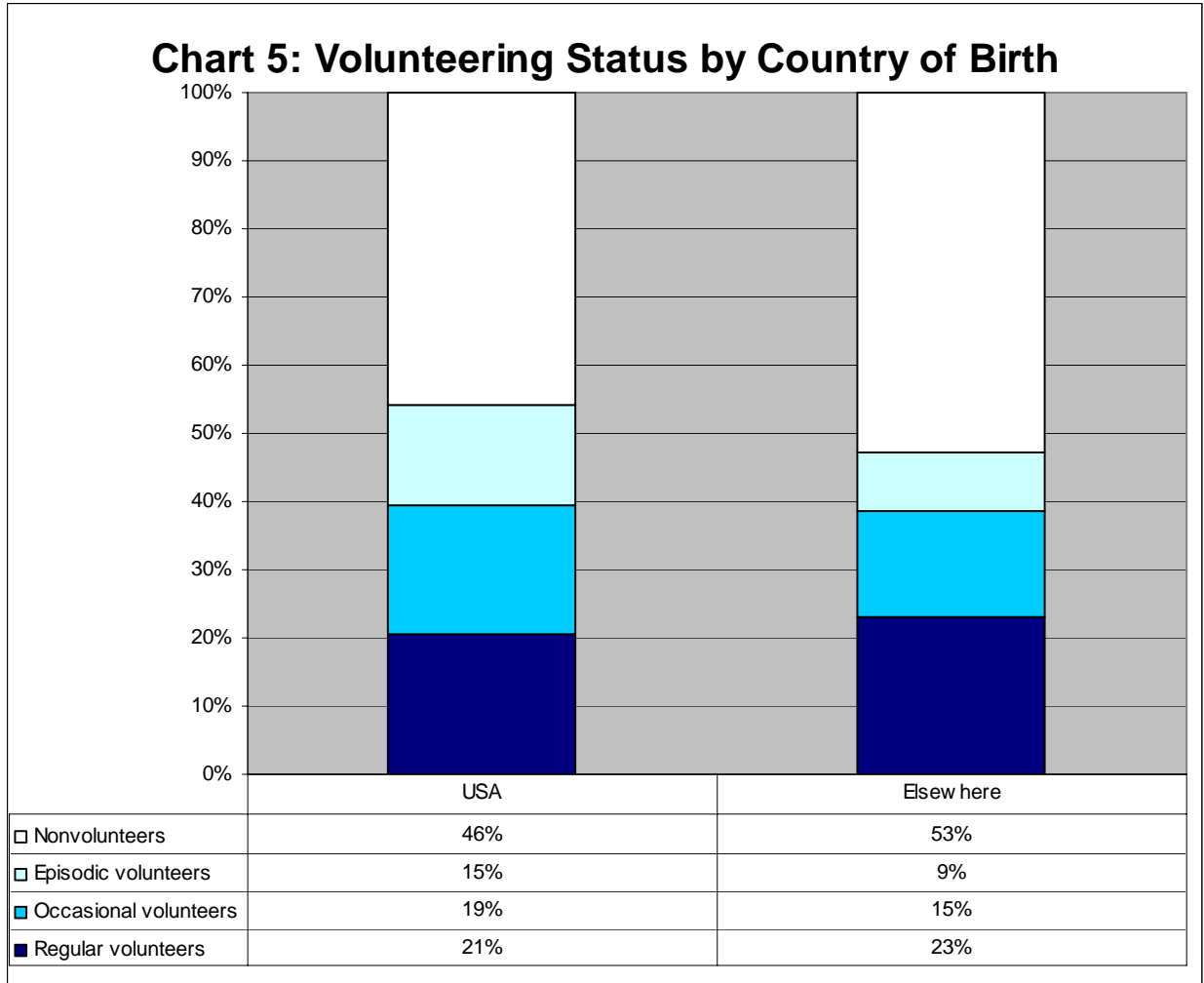
Respondents coded “More than category chosen” gave more than one “yes” answer to this group of questions. Respondents coded “None of the above” gave no “yes” answers.

Counts: None of the above = 149 respondents; White = 2,540 respondents; Black/African American = 205 respondents; American Indian / Alaskan Native = 52 respondents; Asian = 86 respondents; Hawaiian / Pacific Islander = 31 respondents; More than one category chosen = 115 respondents.



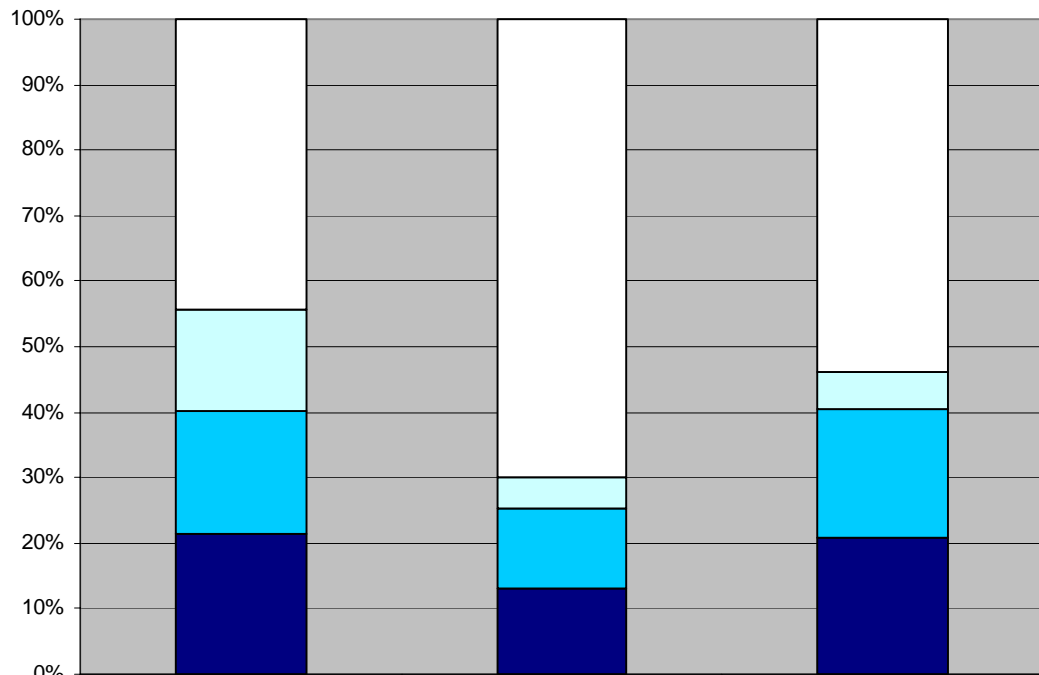
NOTE: This question is completely separate from the race questions used to create Chart 3. Respondents can answer yes or no to this question regardless of how they answered the earlier questions.

Counts: Latino = 381 respondents; Non-Latino = 2,785 respondents.



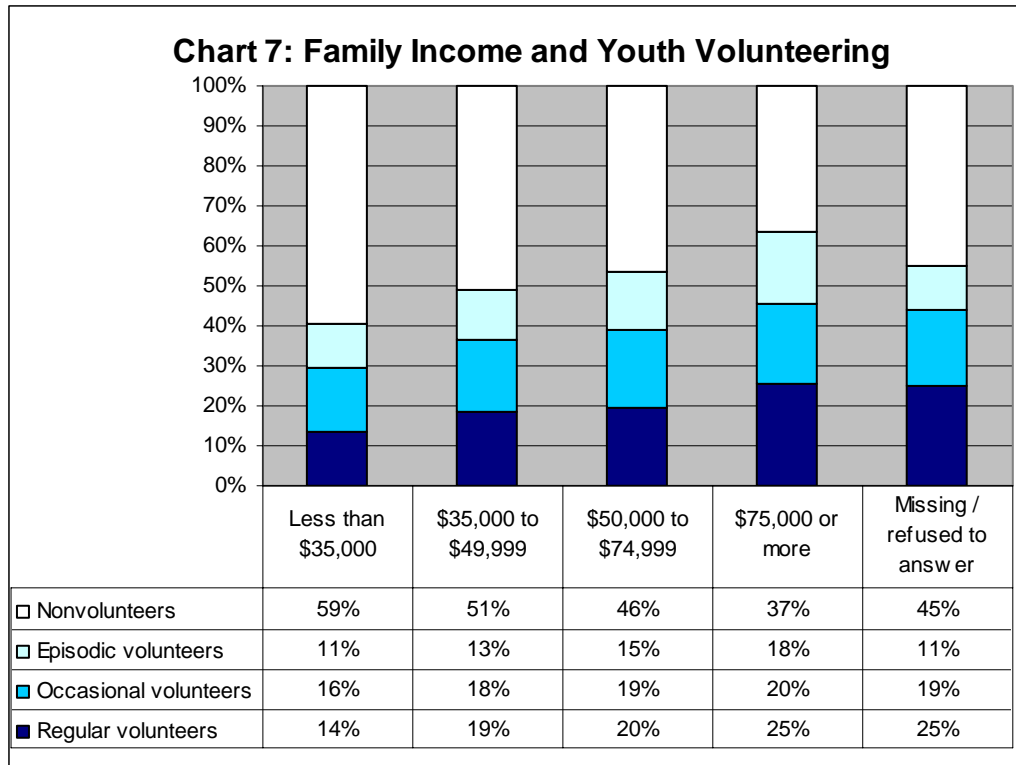
Counts: Born in USA = 3,016 respondents; Born outside the USA = 162 respondents.

**Chart 6: Volunteering Status by Language Spoken at Home**



	English	Spanish	Other
□ Nonvolunteers	44%	70%	54%
□ Episodic volunteers	15%	5%	6%
■ Occasional volunteers	19%	12%	20%
■ Regular volunteers	21%	13%	21%

Counts: Speaks English at home = 2,982 respondents; Speaks Spanish at home = 123 respondents; Speaks another language = 73 respondents.



NOTE: Data comes from the latest CPS baseline survey for which there is data for the household. About 13 percent of all responding households did not, and/or would not, answer the question.

Counts: Family income \$35,000 or less = 621 respondents; \$35,000 to \$49,999 = 439 respondents; \$50,000 to \$74,999 = 667 respondents; \$75,000 or more = 1,084 respondents.