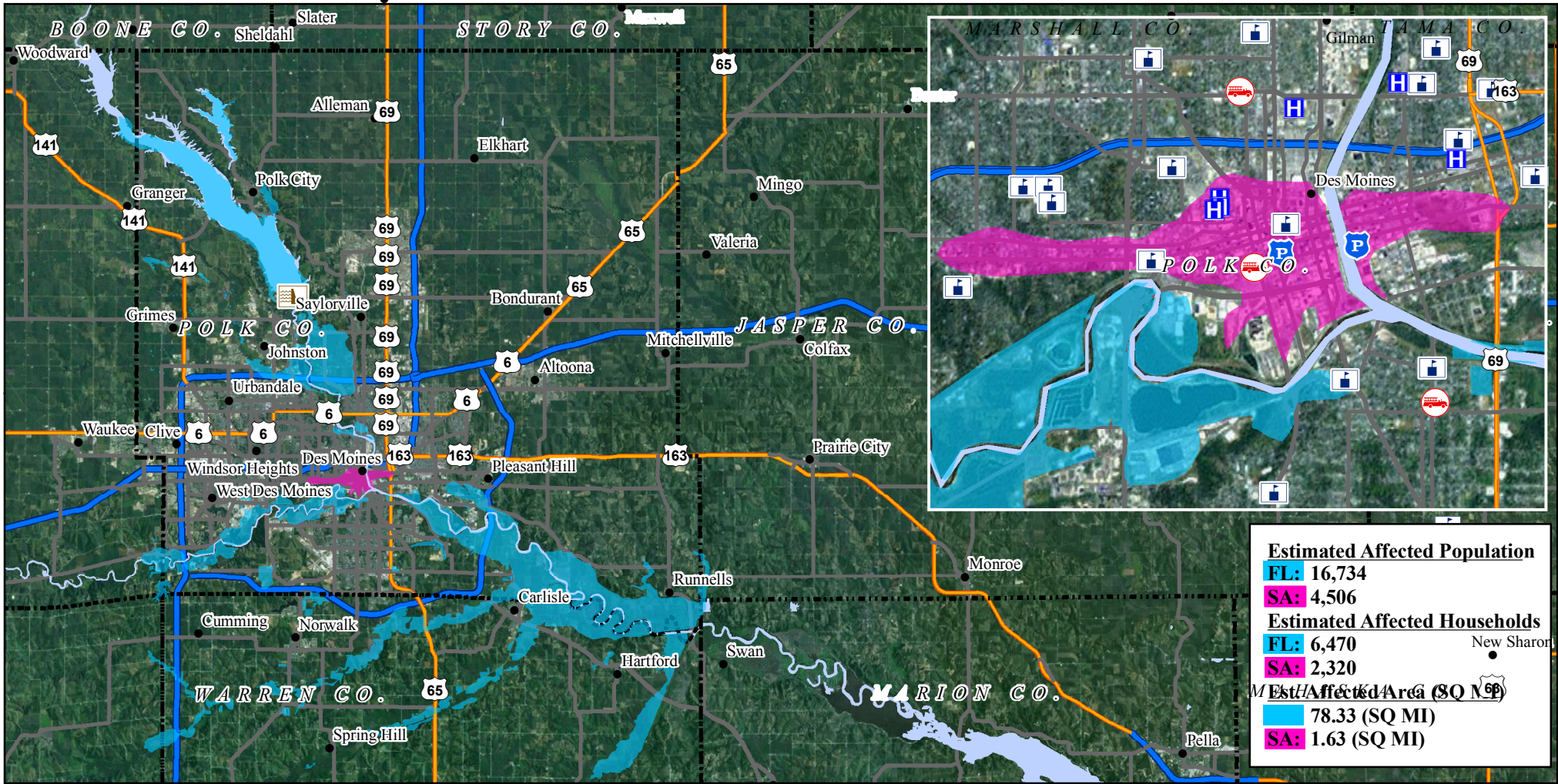


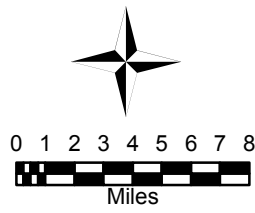
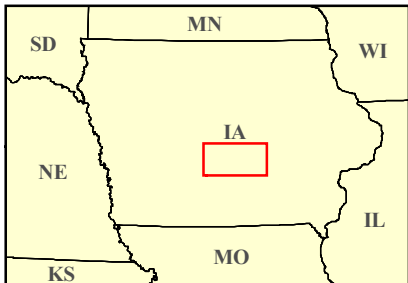
# Imagery Derived Assessment as of 06/17/2008

## Polk and Warren Counties, Iowa



Estimated Affected Population	
FL:	16,734
SA:	4,506
Estimated Affected Households	
FL:	6,470
SA:	2,320
Estimated Affected Area (SQ MI)	
FL:	78.33 (SQ MI)
SA:	1.63 (SQ MI)

Location Map



Legend

●	Cities	H	Hospitals	—	Interstate	■	Saturation Areas
P	Local Police	S	Schools	—	US Highway	■	Flood Areas
D	Dams	F	Fire Stations	—	State Highway	---	County
						■	Major Water Body



ITS Mapping & Analysis Center  
 Washington, DC  
 06/17/08 -- 05:10 PM EDT  
 Source: NGA and US Census