

SECTION @ TYPE I

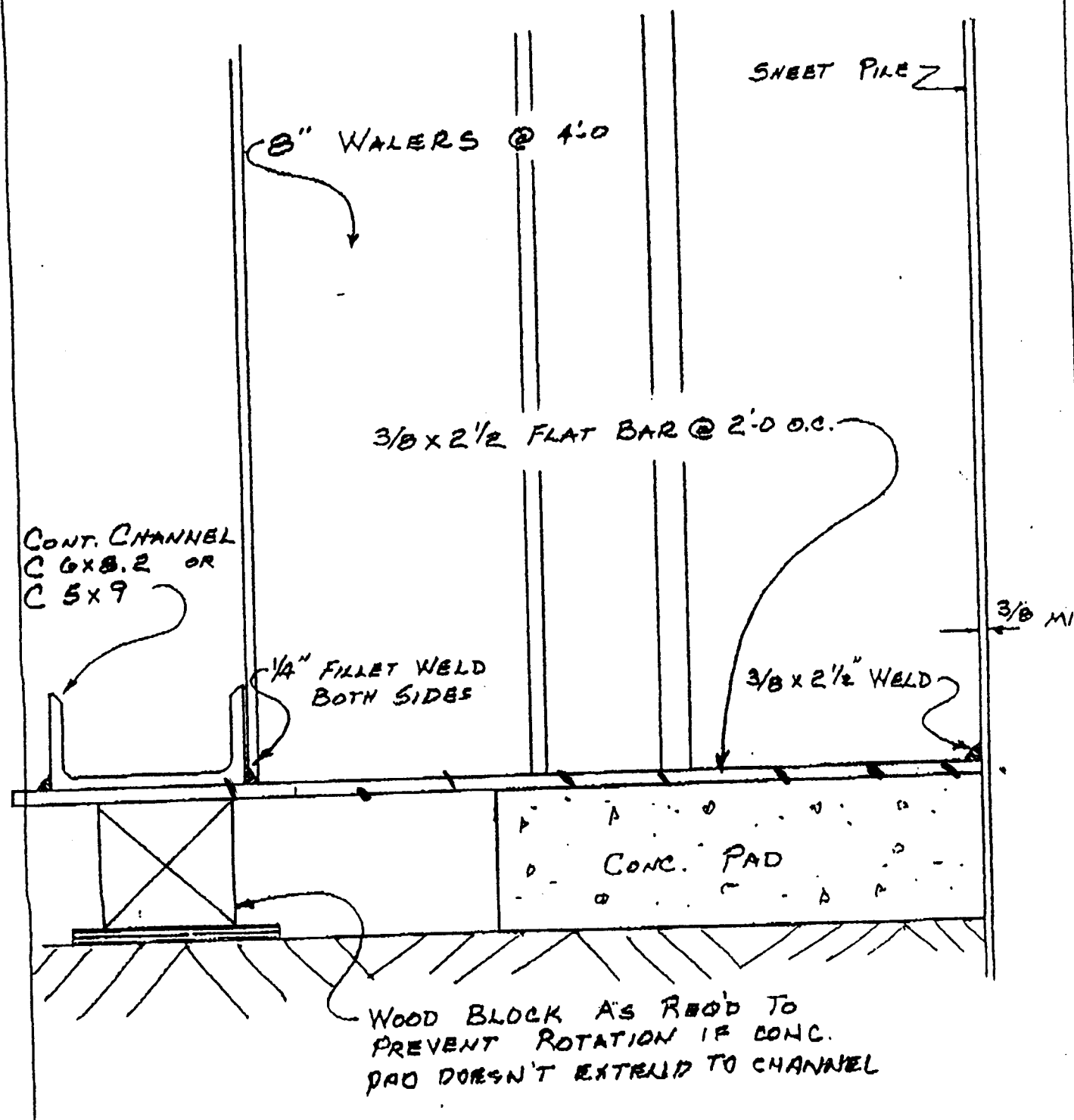
3/4" = 1'-0"

(A00006886)

T 2-11-24

6-1-5-1-1-1

AMERICAN
SAFETY
EQUIPMENT
CORPORATION



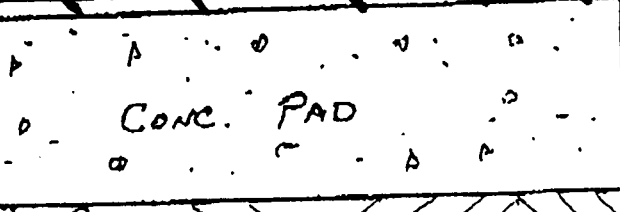
CONT. CHANNEL
C 6x8.2 OR
C 5x9

8" WALERS @ 4'-0"

3/8 x 2 1/2 FLAT BAR @ 2'-0 O.C.

1/4" FILLET WELD
BOTH SIDES

3/8 x 2 1/2" WELD



CONC. PAD

WOOD BLOCK AS REQ'D TO
PREVENT ROTATION IF CONC.
PAD DOESN'T EXTEND TO CHANNEL

<p>FWS</p> <p>FORMWORK SERVICES AND SUPPLY COMPANY</p>	TITLE		JOB
	DATE	DRAWN BY	SHEET