

INDEX TO DRAWINGS

DWG.	DESCRIPTION
1.	LOCATION MAP, VICINITY MAP, AND INDEX
2.	PLAN AND PROFILE STA. 370+00 - STA. 436+00
3.	PLAN AND PROFILE STA. 436+00 - STA. 522+00
4.	PLAN AND PROFILE STA. 522+00 - STA. 605+00
5.	PLAN AND PROFILE STA. 605+00 - STA. 682+00
6.	BAYOU VILLERE CLOSURE - PLAN
7.	TYPICAL DESIGN SECTIONS
8.	TYPICAL DESIGN SECTIONS
9.	SOIL BORINGS
10.	SOIL BORING LEGEND

SUBMITTED <i>Spruill</i> CHIEF DESIGNER		30MAR78 Deleted dwg. 7 Mod. 1
APPROVED <i>James C. Baehr</i> CHIEF ENGINEERING DIVISION		
APPROVED <i>Richard L. Hunt</i> DISTRICT ENGINEER		U.S. ARMY ENGINEER DISTRICT, NEW ORLEANS CORPS OF ENGINEERS NEW ORLEANS, LA.
DESIGNED G.W.O. G.P.M. R.P.L.		
DRAWN <i>William E. Thomas</i>		LAKE PONTCHARTRAIN AND VICINITY CHALMETTE AREA PLAN HURRICANE PROTECTION LEVEE SECOND LIFT STA. 370+00 TO STA. 682+00 ST. BERNARD PARISH, LA. LOCATION MAP VICINITY MAP, AND INDEX
DATE APRIL 1972		SCALE AS SHOWN
FILE NO. H-8-25894		SHEET NO. DACW29-72-B-0137

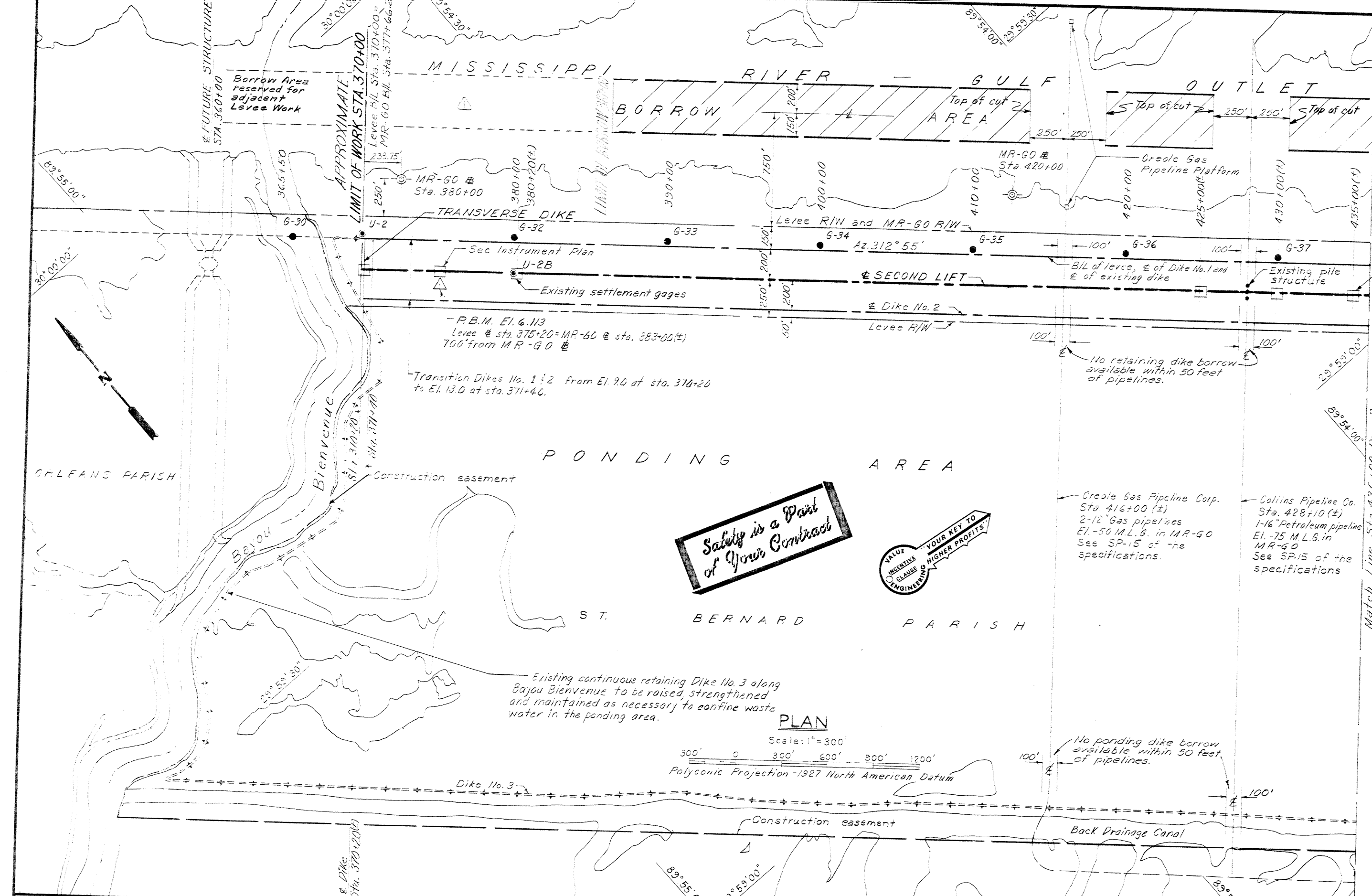
# HURRICANE PROTECTION LEVEE

## CHALMETTE AREA PLAN

STA. 370+00 TO STA. 682+00

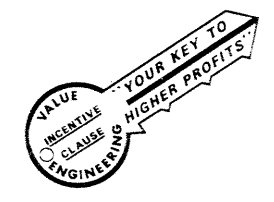
THIS PLAN ACCOMPANIES  
 MODIFICATION P00001 TO  
 CONTRACT NO. DACW29-  
 72-C-0208

NOTE:  
 DRAWING REDUCED  
 TO ONE HALF SCALE

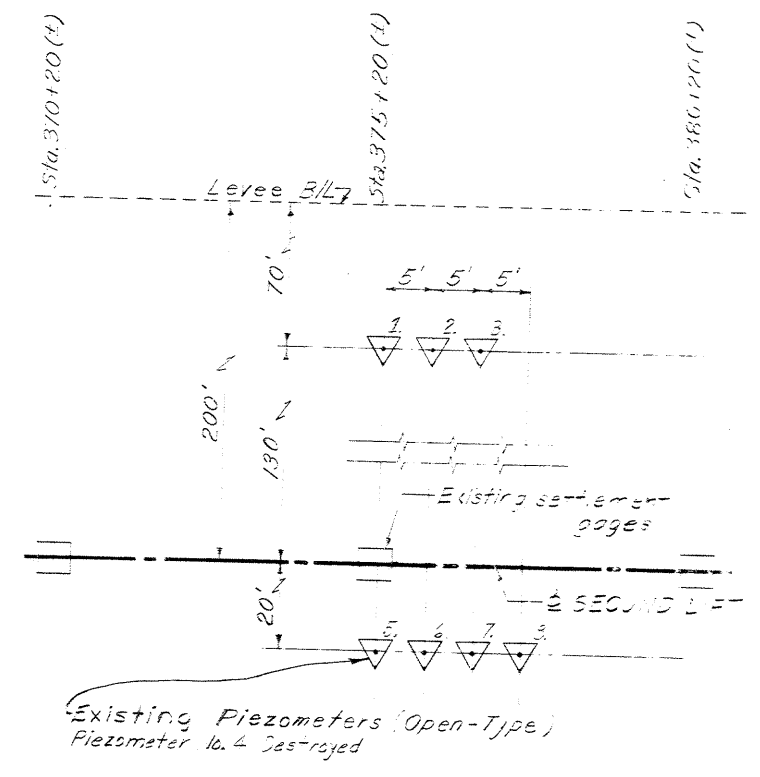


- GENERAL NOTES:**
- All elevations are expressed in feet and refer to Mean Sea Level except as noted.
  - The soil borings designated with "G" are 3 inch I.D. core barrel general type borings, those designated with "U" are 5 inch diameter undisturbed borings.
  - G-30 location of general type borings  
U-2 location of undisturbed borings
  - P.B.M.'s are located on drawings at levee stations: 375+20, 494+74.79 and 670+50.
  - For dike no. 1 and 2 elevations, see Design Section Tabulation dwg. 9.
  - All azimuths are turned in a clockwise direction from 0° (South point).
  - All stations refer to levee stations unless otherwise noted.

**Safety is a Part of Your Contract**

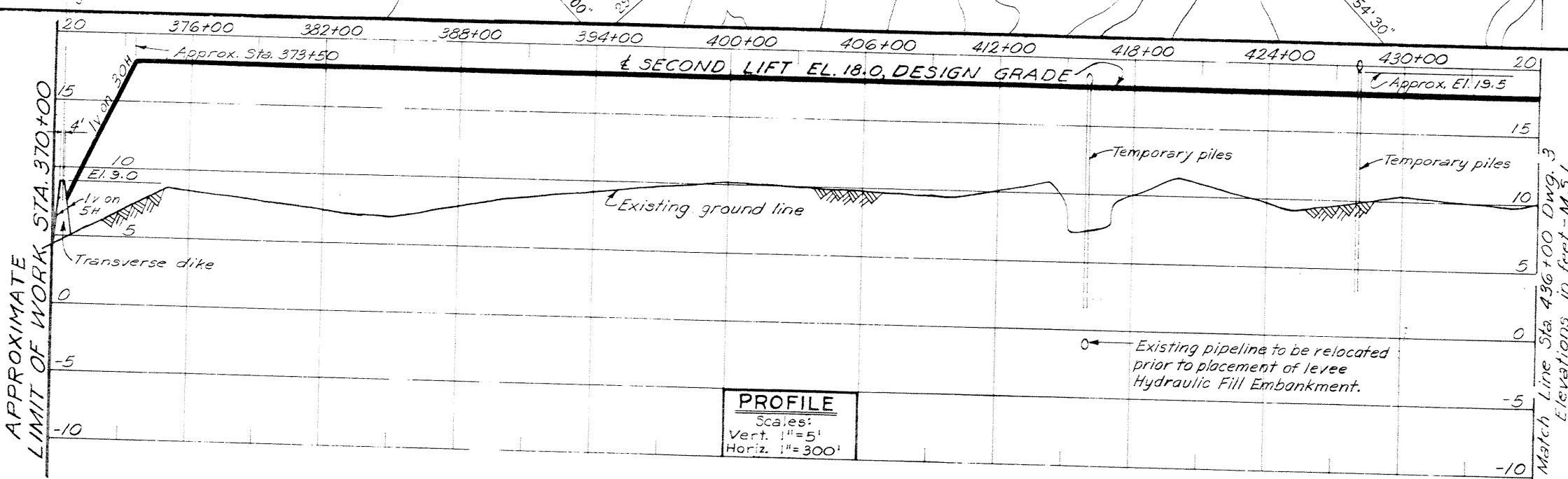


**PLAN**  
Scale: 1" = 300'  
Polyconic Projection - 1927 North American Datum



**INSTRUMENT PLAN**  
NOT TO SCALE

**NOTE:**  
DRAWING REDUCED TO ONE HALF SCALE



**PROFILE**  
Scales:  
Vert. 1" = 5'  
Horiz. 1" = 300'

REVISION	DATE	DESCRIPTION	BY

U. S. ARMY ENGINEER DISTRICT, NEW ORLEANS  
CORPS OF ENGINEERS  
NEW ORLEANS, LA.

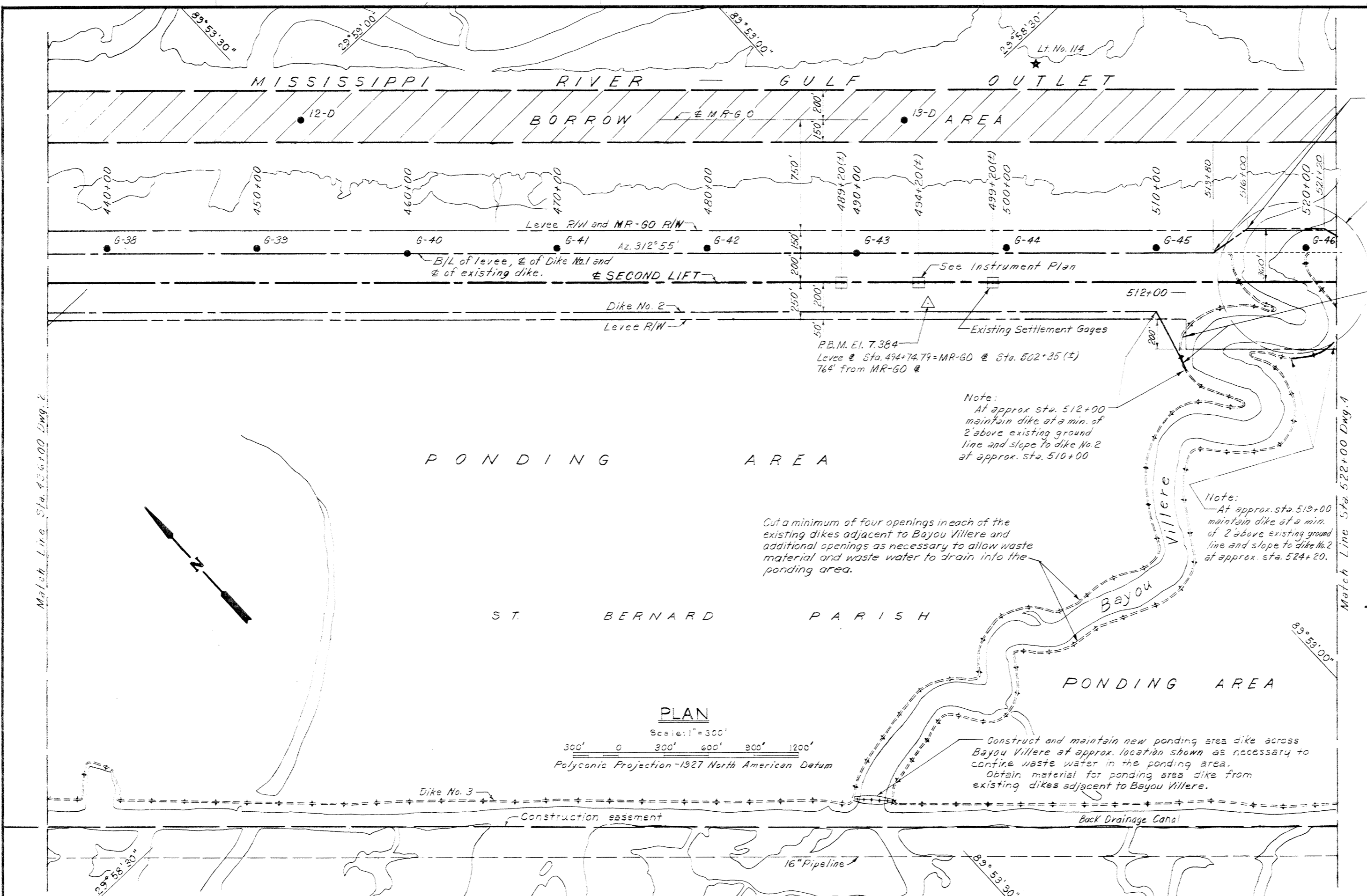
LAKE PONTCHARTRAIN AND VICINITY  
CHALMETTE AREA PLAN  
HURRICANE PROTECTION LEVEE  
SECOND LIFT  
STA. 370+00 TO STA. 682+00  
ST. BERNARD PARISH, LA.

**PLAN AND PROFILE**

DESIGNED: G. W. O.	DRAWN: G. P. M.	CHECKED: R. P. L.	DATE: APRIL 1972	SCALE: AS SHOWN	FILE NO. H-8-25894
SPEC. NO. DACW29-72-B-0137			DWG. 2 OF 11		

**Safety is a Part of Your Contract**

**YOUR KEY TO HIGHER PROFITS**



Note: At approx. sta. 513+80 El. 13.0 transition to approx. sta. 516+00 El. 4.0.

See dwg. 7

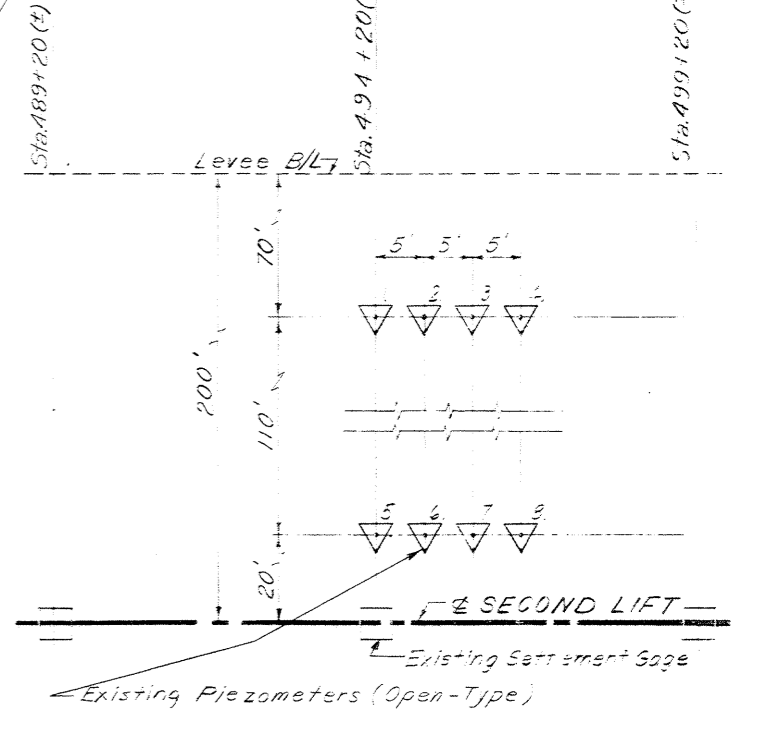
Obtain material for ponding area dike from existing dike.

Note: At approx. sta. 512+00 maintain dike at a min. of 2' above existing ground line and slope to dike No. 2 at approx. sta. 510+00

Note: At approx. sta. 510+00 maintain dike at a min. of 2' above existing ground line and slope to dike No. 2 at approx. sta. 524+20.

Cut a minimum of four openings in each of the existing dikes adjacent to Bayou Villere and additional openings as necessary to allow waste material and waste water to drain into the ponding area.

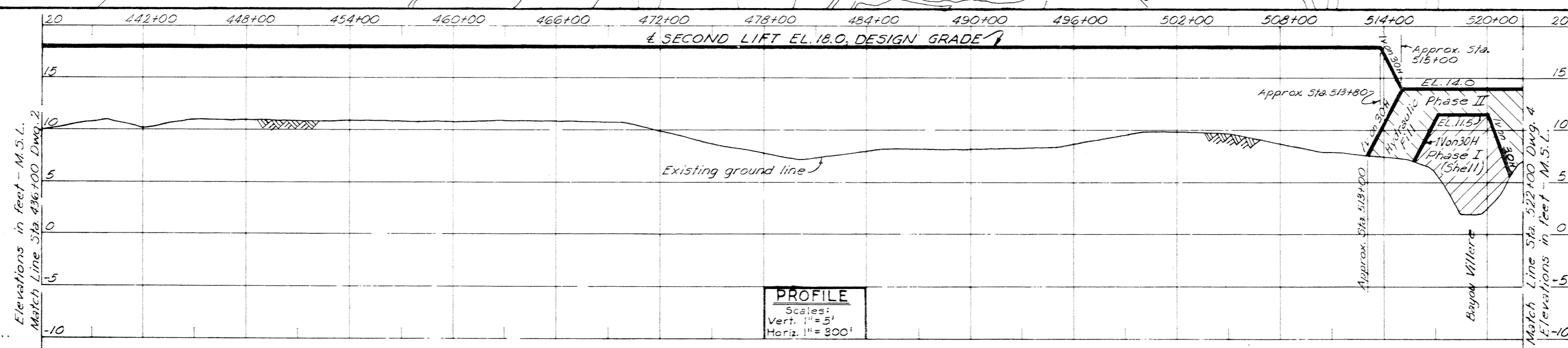
Construct and maintain new ponding area dike across Bayou Villere at approx. location shown as necessary to confine waste water in the ponding area. Obtain material for ponding area dike from existing dikes adjacent to Bayou Villere.



**INSTRUMENT PLAN**  
NOT TO SCALE

**NOTE: DRAWING REDUCED TO ONE HALF SCALE**

Note: For general notes see dwg. 2.



**PROFILE**  
Scales:  
Vert. 1" = 5'  
Horiz. 1" = 300'

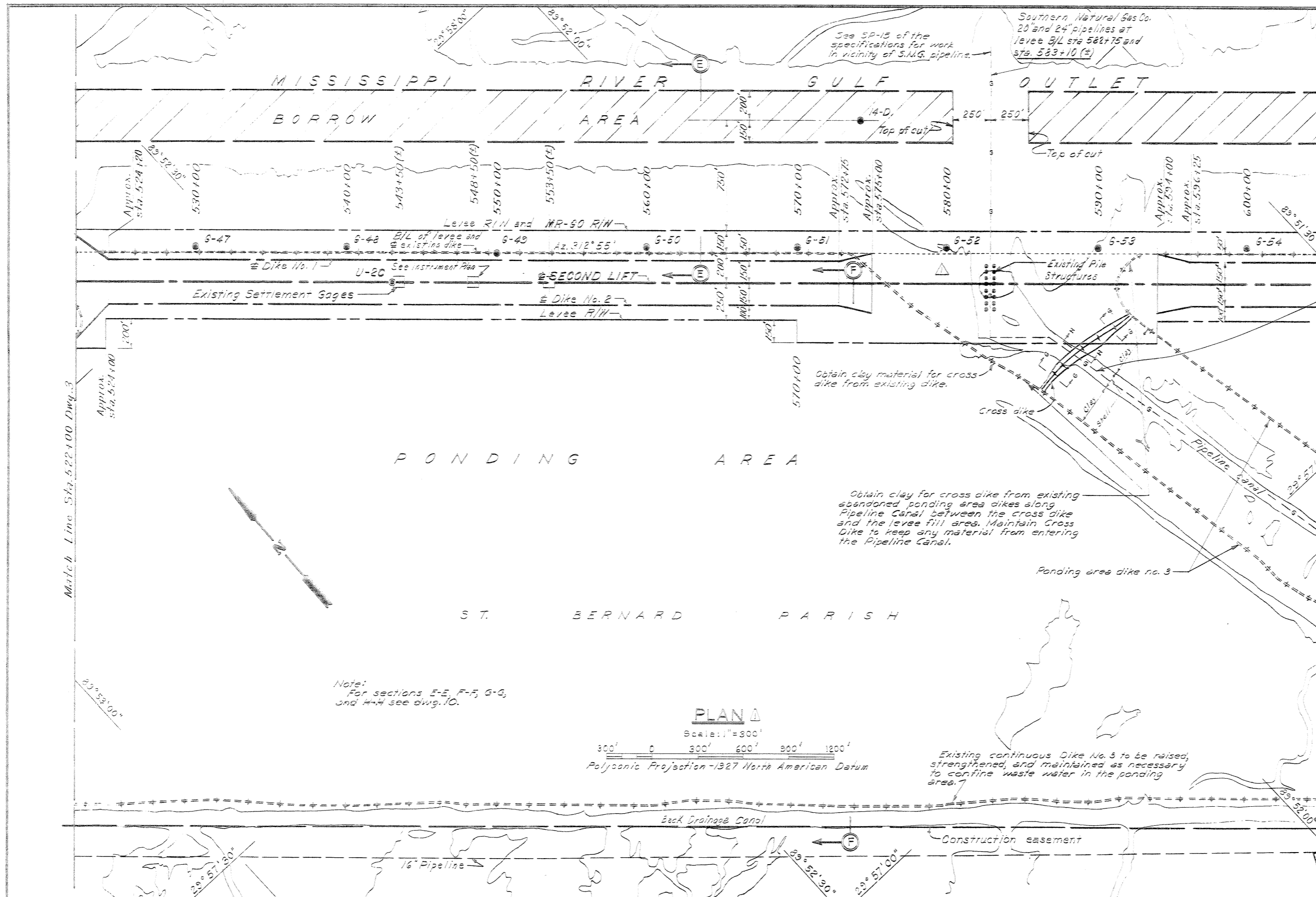
REVISION	DATE	DESCRIPTION	BY

U. S. ARMY ENGINEER DISTRICT, NEW ORLEANS  
CORPS OF ENGINEERS  
NEW ORLEANS, LA.

LAKE PONTCHARTRAIN AND VICINITY  
CHALMETTE AREA PLAN  
HURRICANE PROTECTION LEVEE  
SECOND LIFT  
STA. 370+00 TO STA. 682+00  
ST. BERNARD PARISH, LA.

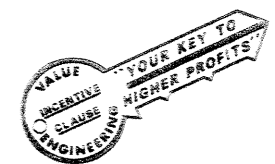
**PLAN AND PROFILE**

DESIGNED: S.W.C.	DRAWN: S.P.M.	CHECKED: R.P.L.	DATE: APRIL 1972	SCALE: AS SHOWN	FILE NO. H-8-25894
SPEC. NO. DACW29-72-B-0137			DWG. 3 of 11		

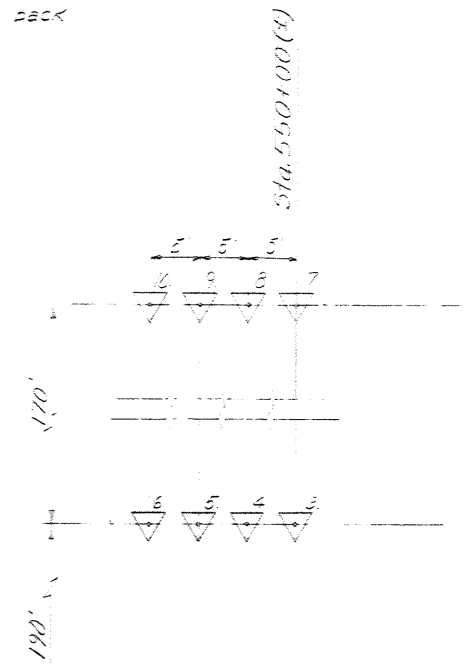


THIS PLAN ACCOMPANIES  
MODIFICATION 00001 TO  
CONTRACT NO. DACW 29-  
72-C-0208

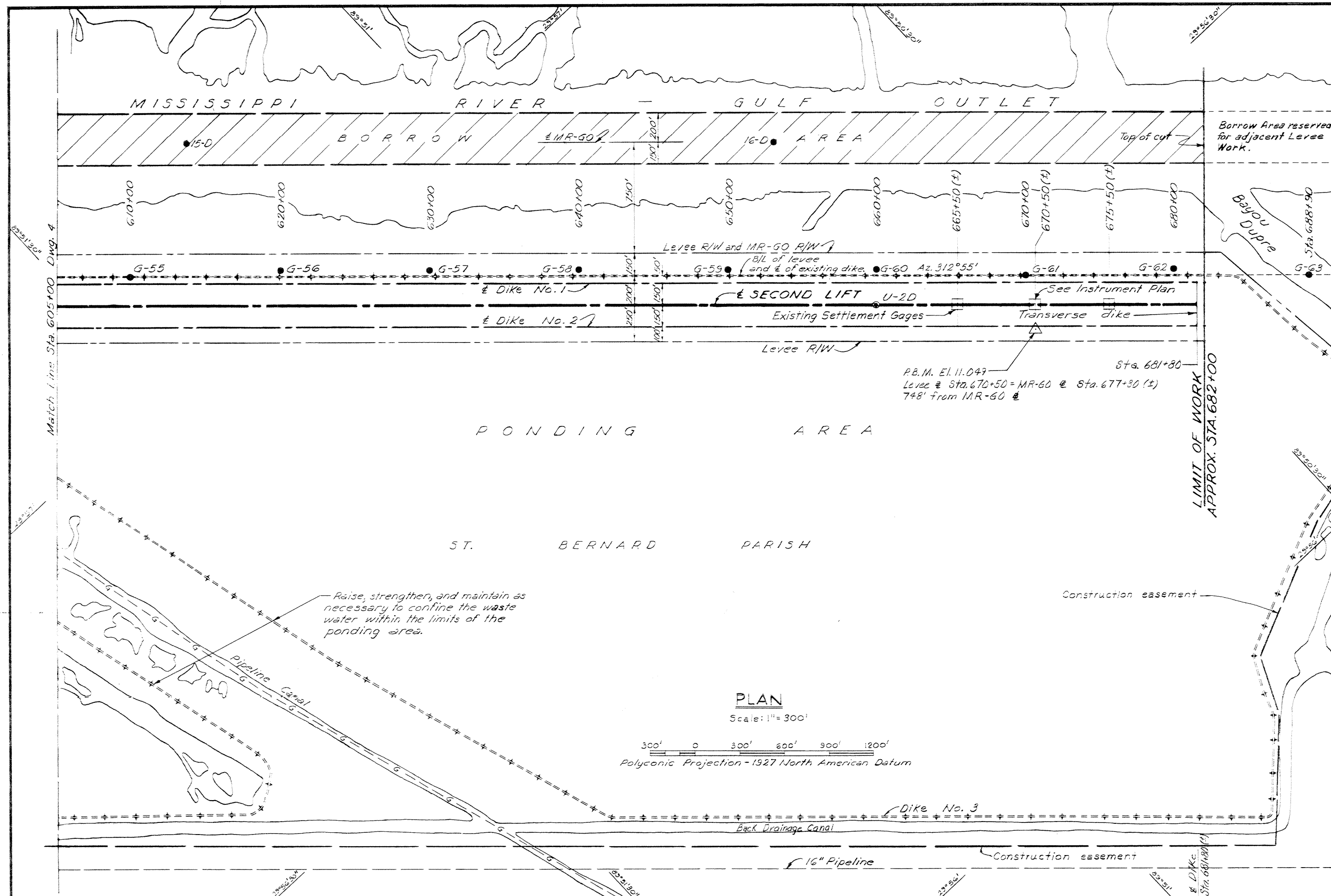
*Safety is a Part  
of Your Contract*



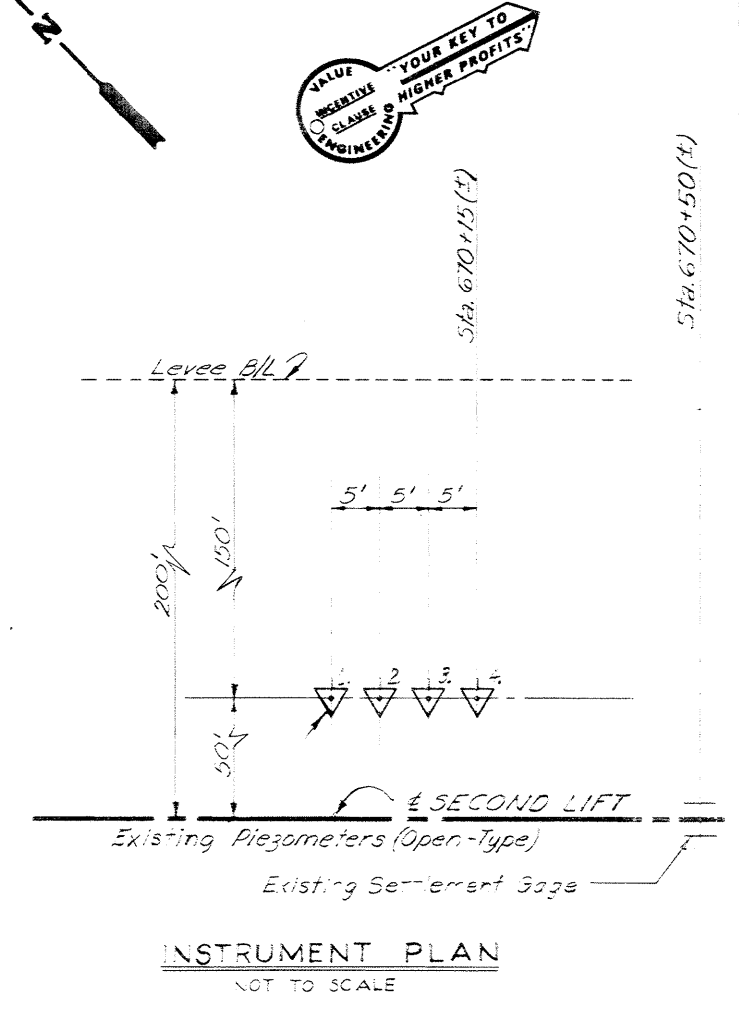
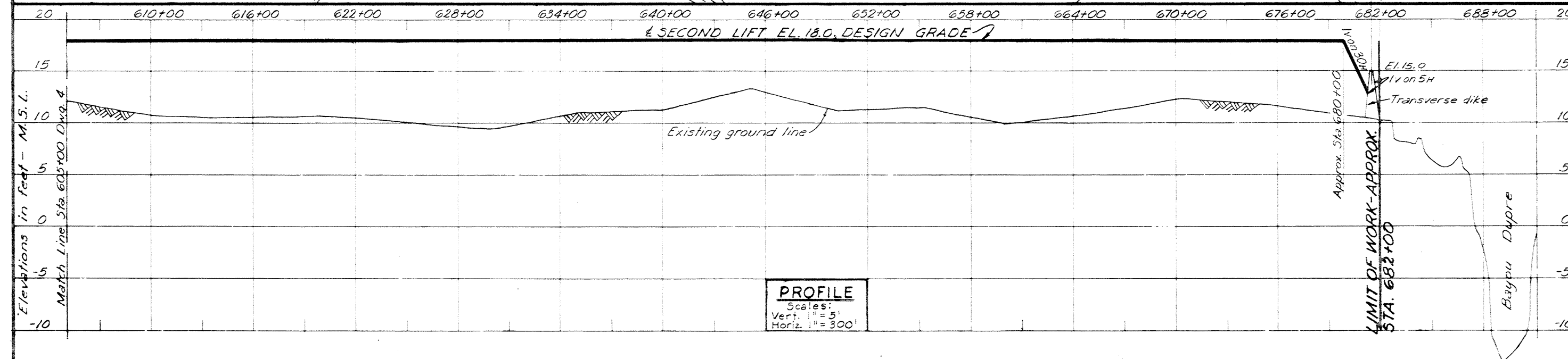
Flotation not allowed in pipeline cans from 150' south of cross dike to back drainage cans.



Existing Settlement Sage  
Existing Piezometers (Open-Type)  
Piezometers nos. 1, 2, 3, 4, 5, 6, 7, 8, 9, 10, 11, 12, 13, 14, 15, 16, 17, 18, 19, 20, 21, 22, 23, 24, 25, 26, 27, 28, 29, 30, 31, 32, 33, 34, 35, 36, 37, 38, 39, 40, 41, 42, 43, 44, 45, 46, 47, 48, 49, 50, 51, 52, 53, 54, 55, 56, 57, 58, 59, 60, 61, 62, 63, 64, 65, 66, 67, 68, 69, 70, 71, 72, 73, 74, 75, 76, 77, 78, 79, 80, 81, 82, 83, 84, 85, 86, 87, 88, 89, 90, 91, 92, 93, 94, 95, 96, 97, 98, 99, 100, 101, 102, 103, 104, 105, 106, 107, 108, 109, 110, 111, 112, 113, 114, 115, 116, 117, 118, 119, 120, 121, 122, 123, 124, 125, 126, 127, 128, 129, 130, 131, 132, 133, 134, 135, 136, 137, 138, 139, 140, 141, 142, 143, 144, 145, 146, 147, 148, 149, 150, 151, 152, 153, 154, 155, 156, 157, 158, 159, 160, 161, 162, 163, 164, 165, 166, 167, 168, 169, 170, 171, 172, 173, 174, 175, 176, 177, 178, 179, 180, 181, 182, 183, 184, 185, 186, 187, 188, 189, 190, 191, 192, 193, 194, 195, 196, 197, 198, 199, 200, 201, 202, 203, 204, 205, 206, 207, 208, 209, 210, 211, 212, 213, 214, 215, 216, 217, 218, 219, 220, 221, 222, 223, 224, 225, 226, 227, 228, 229, 230, 231, 232, 233, 234, 235, 236, 237, 238, 239, 240, 241, 242, 243, 244, 245, 246, 247, 248, 249, 250, 251, 252, 253, 254, 255, 256, 257, 258, 259, 260, 261, 262, 263, 264, 265, 266, 267, 268, 269, 270, 271, 272, 273, 274, 275, 276, 277, 278, 279, 280, 281, 282, 283, 284, 285, 286, 287, 288, 289, 290, 291, 292, 293, 294, 295, 296, 297, 298, 299, 300, 301, 302, 303, 304, 305, 306, 307, 308, 309, 310, 311, 312, 313, 314, 315, 316, 317, 318, 319, 320, 321, 322, 323, 324, 325, 326, 327, 328, 329, 330, 331, 332, 333, 334, 335, 336, 337, 338, 339, 340, 341, 342, 343, 344, 345, 346, 347, 348, 349, 350, 351, 352, 353, 354, 355, 356, 357, 358, 359, 360, 361, 362, 363, 364, 365, 366, 367, 368, 369, 370, 371, 372, 373, 374, 375, 376, 377, 378, 379, 380, 381, 382, 383, 384, 385, 386, 387, 388, 389, 390, 391, 392, 393, 394, 395, 396, 397, 398, 399, 400, 401, 402, 403, 404, 405, 406, 407, 408, 409, 410, 411, 412, 413, 414, 415, 416, 417, 418, 419, 420, 421, 422, 423, 424, 425, 426, 427, 428, 429, 430, 431, 432, 433, 434, 435, 436, 437, 438, 439, 440, 441, 442, 443, 444, 445, 446, 447, 448, 449, 450, 451, 452, 453, 454, 455, 456, 457, 458, 459, 460, 461, 462, 463, 464, 465, 466, 467, 468, 469, 470, 471, 472, 473, 474, 475, 476, 477, 478, 479, 480, 481, 482, 483, 484, 485, 486, 487, 488, 489, 490, 491, 492, 493, 494, 495, 496, 497, 498, 499, 500, 501, 502, 503, 504, 505, 506, 507, 508, 509, 510, 511, 512, 513, 514, 515, 516, 517, 518, 519, 520, 521, 522, 523, 524, 525, 526, 527, 528, 529, 530, 531, 532, 533, 534, 535, 536, 537, 538, 539, 540, 541, 542, 543, 544, 545, 546, 547, 548, 549, 550, 551, 552, 553, 554, 555, 556, 557, 558, 559, 560, 561, 562, 563, 564, 565, 566, 567, 568, 569, 570, 571, 572, 573, 574, 575, 576, 577, 578, 579, 580, 581, 582, 583, 584, 585, 586, 587, 588, 589, 590, 591, 592, 593, 594, 595, 596, 597, 598, 599, 600, 601, 602, 603, 604, 605, 606, 607, 608, 609, 610, 611, 612, 613, 614, 615, 616, 617, 618, 619, 620, 621, 622, 623, 624, 625, 626, 627, 628, 629, 630, 631, 632, 633, 634, 635, 636, 637, 638, 639, 640, 641, 642, 643, 644, 645, 646, 647, 648, 649, 650, 651, 652, 653, 654, 655, 656, 657, 658, 659, 660, 661, 662, 663, 664, 665, 666, 667, 668, 669, 670, 671, 672, 673, 674, 675, 676, 677, 678, 679, 680, 681, 682, 683, 684, 685, 686, 687, 688, 689, 690, 691, 692, 693, 694, 695, 696, 697, 698, 699, 700, 701, 702, 703, 704, 705, 706, 707, 708, 709, 710, 711, 712, 713, 714, 715, 716, 717, 718, 719, 720, 721, 722, 723, 724, 725, 726, 727, 728, 729, 730, 731, 732, 733, 734, 735, 736, 737, 738, 739, 740, 741, 742, 743, 744, 745, 746, 747, 748, 749, 750, 751, 752, 753, 754, 755, 756, 757, 758, 759, 760, 761, 762, 763, 764, 765, 766, 767, 768, 769, 770, 771, 772, 773, 774, 775, 776, 777, 778, 779, 780, 781, 782, 783, 784, 785, 786, 787, 788, 789, 790, 791, 792, 793, 794, 795, 796, 797, 798, 799, 800, 801, 802, 803, 804, 805, 806, 807, 808, 809, 810, 811, 812, 813, 814, 815, 816, 817, 818, 819, 820, 821, 822, 823, 824, 825, 826, 827, 828, 829, 830, 831, 832, 833, 834, 835, 836, 837, 838, 839, 840, 841, 842, 843, 844, 845, 846, 847, 848, 849, 850, 851, 852, 853, 854, 855, 856, 857, 858, 859, 860, 861, 862, 863, 864, 865, 866, 867, 868, 869, 870, 871, 872, 873, 874, 875, 876, 877, 878, 879, 880, 881, 882, 883, 884, 885, 886, 887, 888, 889, 890, 891, 892, 893, 894, 895, 896, 897, 898, 899, 900, 901, 902, 903, 904, 905, 906, 907, 908, 909, 910, 911, 912, 913, 914, 915, 916, 917, 918, 919, 920, 921, 922, 923, 924, 925, 926, 927, 928, 929, 930, 931, 932, 933, 934, 935, 936, 937, 938, 939, 940, 941, 942, 943, 944, 945, 946, 947, 948, 949, 950, 951, 952, 953, 954, 955, 956, 957, 958, 959, 960, 961, 962, 963, 964, 965, 966, 967, 968, 969, 970, 971, 972, 973, 974, 975, 976, 977, 978, 979, 980, 981, 982, 983, 984, 985, 986, 987, 988, 989, 990, 991, 992, 993, 994, 995, 996, 997, 998, 999, 1000, 1001, 1002, 1003, 1004, 1005, 1006, 1007, 1008, 1009, 1010, 1011, 1012, 1013, 1014, 1015, 1016, 1017, 1018, 1019, 1020, 1021, 1022, 1023, 1024, 1025, 1026, 1027, 1028, 1029, 1030, 1031, 1032, 1033, 1034, 1035, 1036, 1037, 1038, 1039, 1040, 1041, 1042, 1043, 1044, 1045, 1046, 1047, 1048, 1049, 1050, 1051, 1052, 1053, 1054, 1055, 1056, 1057, 1058, 1059, 1060, 1061, 1062, 1063, 1064, 1065, 1066, 1067, 1068, 1069, 1070, 1071, 1072, 1073, 1074, 1075, 1076, 1077, 1078, 1079, 1080, 1081, 1082, 1083, 1084, 1085, 1086, 1087, 1088, 1089, 1090, 1091, 1092, 1093, 1094, 1095, 1096, 1097, 1098, 1099, 1100, 1101, 1102, 1103, 1104, 1105, 1106, 1107, 1108, 1109, 1110, 1111, 1112, 1113, 1114, 1115, 1116, 1117, 1118, 1119, 1120, 1121, 1122, 1123, 1124, 1125, 1126, 1127, 1128, 1129, 1130, 1131, 1132, 1133, 1134, 1135, 1136, 1137, 1138, 1139, 1140, 1141, 1142, 1143, 1144, 1145, 1146, 1147, 1148, 1149, 1150, 1151, 1152, 1153, 1154, 1155, 1156, 1157, 1158, 1159, 1160, 1161, 1162, 1163, 1164, 1165, 1166, 1167, 1168, 1169, 1170, 1171, 1172, 1173, 1174, 1175, 1176, 1177, 1178, 1179, 1180, 1181, 1182, 1183, 1184, 1185, 1186, 1187, 1188, 1189, 1190, 1191, 1192, 1193, 1194, 1195, 1196, 1197, 1198, 1199, 1200, 1201, 1202, 1203, 1204, 1205, 1206, 1207, 1208, 1209, 1210, 1211, 1212, 1213, 1214, 1215, 1216, 1217, 1218, 1219, 1220, 1221, 1222, 1223, 1224, 1225, 1226, 1227, 1228, 1229, 1230, 1231, 1232, 1233, 1234, 1235, 1236, 1237, 1238, 1239, 1240, 1241, 1242, 1243, 1244, 1245, 1246, 1247, 1248, 1249, 1250, 1251, 1252, 1253, 1254, 1255, 1256, 1257, 1258, 1259, 1260, 1261, 1262, 1263, 1264, 1265, 1266, 1267, 1268, 1269, 1270, 1271, 1272, 1273, 1274, 1275, 1276, 1277, 1278, 1279, 1280, 1281, 1282, 1283, 1284, 1285, 1286, 1287, 1288, 1289, 1290, 1291, 1292, 1293, 1294, 1295, 1296, 1297, 1298, 1299, 1300, 1301, 1302, 1303, 1304, 1305, 1306, 1307, 1308, 1309, 1310, 1311, 1312, 1313, 1314, 1315, 1316, 1317, 1318, 1319, 1320, 1321, 1322, 1323, 1324, 1325, 1326, 1327, 1328, 1329, 1330, 1331, 1332, 1333, 1334, 1335, 1336, 1337, 1338, 1339, 1340, 1341, 1342, 1343, 1344, 1345, 1346, 1347, 1348, 1349, 1350, 1351, 1352, 1353, 1354, 1355, 1356, 1357, 1358, 1359, 1360, 1361, 1362, 1363, 1364, 1365, 1366, 1367, 1368, 1369, 1370, 1371, 1372, 1373, 1374, 1375, 1376, 1377, 1378, 1379, 1380, 1381, 1382, 1383, 1384, 1385, 1386, 1387, 1388, 1389, 1390, 1391, 1392, 1393, 1394, 1395, 1396, 1397, 1398, 1399, 1400, 1401, 1402, 1403, 1404, 1405, 1406, 1407, 1408, 1409, 1410, 1411, 1412, 1413, 1414, 1415, 1416, 1417, 1418, 1419, 1420, 1421, 1422, 1423, 1424, 1425, 1426, 1427, 1428, 1429, 1430, 1431, 1432, 1433, 1434, 1435, 1436, 1437, 1438, 1439, 1440, 1441, 1442, 1443, 1444, 1445, 1446, 1447, 1448, 1449, 1450, 1451, 1452, 1453, 1454, 1455, 1456, 1457, 1458, 1459, 1460, 1461, 1462, 1463, 1464, 1465, 1466, 1467, 1468, 1469, 1470, 1471, 1472, 1473, 1474, 1475, 1476, 1477, 1478, 1479, 1480, 1481, 1482, 1483, 1484, 1485, 1486, 1487, 1488, 1489, 1490, 1491, 1492, 1493, 1494, 1495, 1496, 1497, 1498, 1499, 1500, 1501, 1502, 1503, 1504, 1505, 1506, 1507, 1508, 1509, 1510, 1511, 1512, 1513, 1514, 1515, 1516, 1517, 1518, 1519, 1520, 1521, 1522, 1523, 1524, 1525, 1526, 1527, 1528, 1529, 1530, 1531, 1532, 1533, 1534, 1535, 1536, 1537, 1538, 1539, 1540, 1541, 1542, 1543, 1544, 1545, 1546, 1547, 1548, 1549, 1550, 1551, 1552, 1553, 1554, 1555, 1556, 1557, 1558, 1559, 1560, 1561, 1562, 1563, 1564, 1565, 1566, 1567, 1568, 1569, 1570, 1571, 1572, 1573, 1574, 1575, 1576, 1577, 1578, 1579, 1580, 1581, 1582, 1583, 1584, 1585, 1586, 1587, 1588, 1589, 1590, 1591, 1592, 1593, 1594, 1595, 1596, 1597, 1598, 1599, 1600, 1601, 1602, 1603, 1604, 1605, 1606, 1607, 1608, 1609, 1610, 1611, 1612, 1613, 1614, 1615, 1616, 1617, 1618, 1619, 1620, 1621, 1622, 1623, 1624, 1625, 1626, 1627, 1628, 1629, 1630, 1631, 1632, 1633, 1634, 1635, 1636, 1637, 1638, 1639, 1640, 1641, 1642, 1643, 1644, 1645, 1646, 1647, 1648, 1649, 1650, 1651, 1652, 1653, 1654, 1655, 1656, 1657, 1658, 1659, 1660, 1661, 1662, 1663, 1664, 1665, 1666, 1667, 1668, 1669, 1670, 1671, 1672, 1673, 1674, 1675, 1676, 1677, 1678, 1679, 1680, 1681, 1682, 1683, 1684, 1685, 1686, 1687, 1688, 1689, 1690, 1691, 1692, 1693, 1694, 1695, 1696, 1697, 1698, 1699, 1700, 1701, 1702, 1703, 1704, 1705, 1706, 1707, 1708, 1709, 1710, 1711, 1712, 1713, 1714, 1715, 1716, 1717, 1718, 1719, 1720, 1721, 1722, 1723, 1724, 1725, 1726, 1727, 1728, 1729, 1730, 1731, 1732, 1733, 1734, 1735, 1736, 1737, 1738, 1739, 1740, 1741, 1742, 1743, 1744, 1745, 1746, 1747, 1748, 1749, 1750, 1751, 1752, 1753, 1754, 1755, 1756, 1757, 1758, 1759, 1760, 1761, 1762, 1763, 1764, 1765, 1766, 1767, 1768, 1769, 1770, 1771, 1772, 1773, 1774, 1775, 1776, 1777, 1778, 1779, 1780, 1781, 1782, 1783, 1784, 1785, 1786, 1787, 1788, 1789, 1790, 1791, 1792, 1793, 1794, 1795, 1796, 1797, 1798, 1799, 1800, 1801, 1802, 1803, 1804, 1805, 1806, 1807, 1808, 1809, 1810, 1811, 1812, 1813, 1814, 1815, 1816, 1817, 1818, 1819, 1820, 1821, 1822, 1823, 1824, 1825, 1826, 1827, 1828, 1829, 1830, 1831, 1832, 1833, 1834, 1835, 1836, 1837, 1838, 1839, 1840, 1841, 1842, 1843, 1844, 1845, 1846, 1847, 1848, 1849, 1850, 1851, 1852, 1853, 1854, 1855, 1856, 1857, 1858, 1859, 1860, 1861, 1862, 1863, 1864, 1865, 1866, 1867, 1868, 1869, 1870, 1871, 1872, 1873, 1874, 1875, 1876, 1877, 1878, 1879, 1880, 1881, 1882, 1883, 1884, 1885, 1886, 1887, 1888, 1889, 1890, 1891, 1892, 1893, 1894, 1895, 1896, 1897, 1898, 1899, 1900, 1901, 1902, 1903, 1904, 1905, 1906, 1907, 1908, 1909, 1910, 1911, 1912, 1913, 1914, 1915, 1916, 1917, 1918, 1919, 1920, 1921, 1922, 1923, 1924, 1925, 1926, 1927, 1928, 1929, 1930, 1931, 1932, 1933, 1934, 1935, 1936, 1937, 1938, 1939, 1940, 1941, 1942, 1943, 1944, 1945, 1946, 1947, 1948, 1949, 1950, 1951, 1952, 1953, 1954, 1955, 1956, 1957, 1958, 1959, 1960, 1961, 1962, 1963, 1964, 1965, 1966, 1967, 1968, 1969, 1970, 1971, 1972, 1973, 1974, 1975, 1976, 1977, 1978, 1979, 1980, 1981, 1982, 1983, 1984, 1985, 1986, 1987, 1988, 1989, 1990, 1991, 1992, 1993, 1994, 1995, 1996, 1997, 1998, 1999, 2000, 2001, 2002, 2003, 2004, 2005, 2006, 2007, 2008, 2009, 2010, 2011, 2012, 2013, 2014, 2015, 2016, 2017, 2018, 2019, 2020, 2021, 2022, 2023, 2024, 2025, 2026, 2027, 2028, 2029, 2030, 2031, 2032, 2033, 2034, 2035, 2036, 2037, 2038, 2039, 2040, 2041, 2042, 2043, 2044, 2045, 2046, 2047, 2048, 2049, 2050, 2051, 2052, 2053, 2054, 2055, 2056, 2057, 2058, 2059, 2060, 2061, 2062, 2063, 2064, 2065, 2066, 2067, 2068, 2069, 2070, 2071, 2072, 2073, 2074, 2075, 2076, 2077, 2078, 2079, 2080, 2081, 2082, 2083, 2084, 2085, 2086, 2087, 2088, 2089, 2090, 2091, 2092, 2093, 2094, 2095, 2096, 2097, 2098, 2099, 2100, 2101, 2102, 2103, 2104, 2105, 2106, 2107, 2108, 2109, 2110, 2111, 2112, 2113, 2114, 2115, 2116, 2117, 2118, 2119, 2120, 2121, 2122, 2123, 2124, 2125, 2126, 2127, 2128, 2129, 2130, 2131, 2132, 2133, 2134, 2135, 2136, 2137, 2138, 2139, 2140, 2141, 2142, 2143, 2144, 2145, 2146, 2147, 2148, 2



**PLAN**  
Scale: 1" = 300'  
Polyconic Projection - 1927 North American Datum

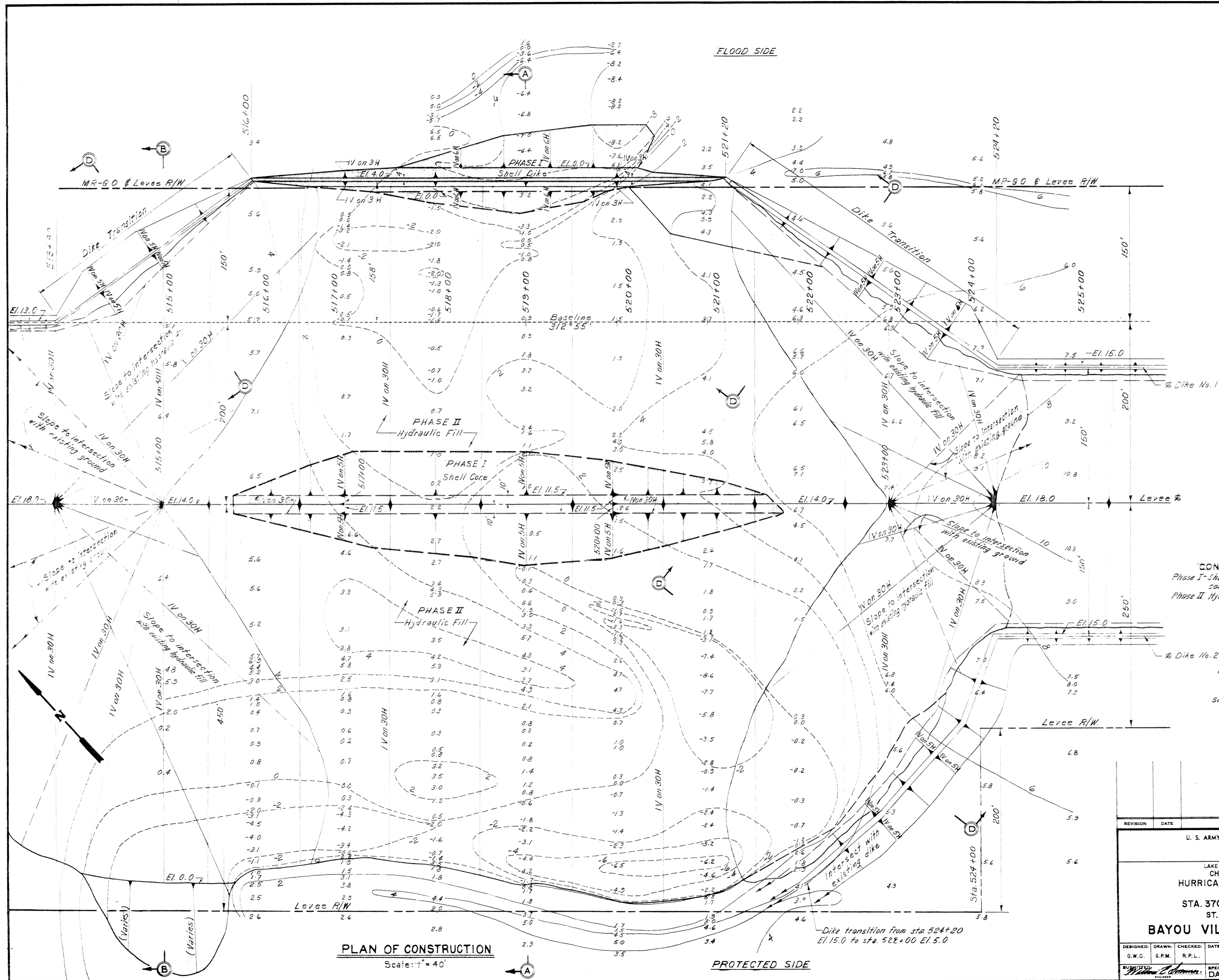


**Safety is a Part of Your Contract**

**NOTE: DRAWING REDUCED TO ONE HALF SCALE**

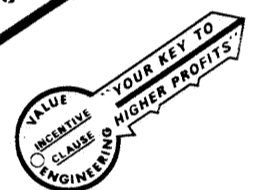
Note: For general notes see dwg. 2.

REVISION	DATE	DESCRIPTION	BY
U. S. ARMY ENGINEER DISTRICT, NEW ORLEANS CORPS OF ENGINEERS NEW ORLEANS, LA.			
LAKE PONTCHARTRAIN AND VICINITY CHALMETTE AREA PLAN HURRICANE PROTECTION LEVEE SECOND LIFT STA. 370+00 TO STA. 682+00 ST. BERNARD PARISH, LA.			
<b>PLAN AND PROFILE</b>			
DESIGNED: G.W.C.	DRAWN: C.E.M.	CHECKED: R.P.L.	DATE: APRIL 1972
SCALE: AS SHOWN		FILE NO. <b>H-8-25894</b>	
SUBMITTED: <i>Michael J. ...</i>		SPEC. NO. DACW29-72-B-0137	
		DWG. <b>5</b> OF <b>11</b>	



**PLAN OF CONSTRUCTION**  
Scale: 1" = 40'

**Safety is a Part of Your Contract**



**CONSTRUCTION SEQUENCE**  
Phase I-Shell core, shell dike, and lay dike construction  
Phase II Hydraulic fill construction

Note:  
For general note see dng. 2.  
For sections A-A, B-B, and D-D, see dng. 8.

**NOTE: DRAWING REDUCED TO ONE HALF SCALE**

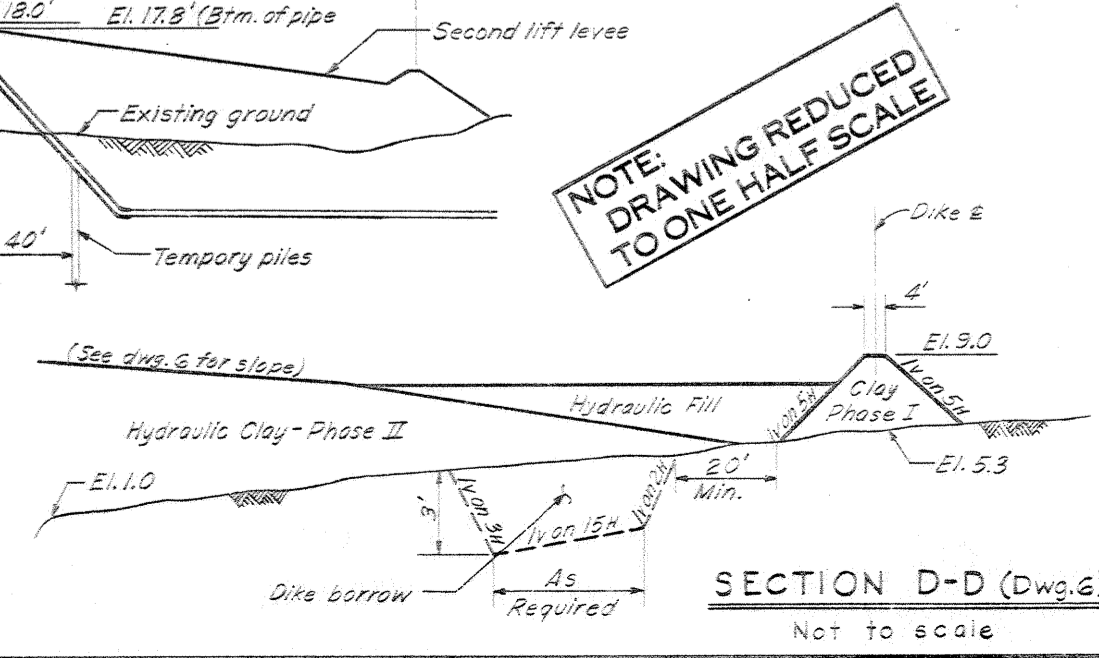
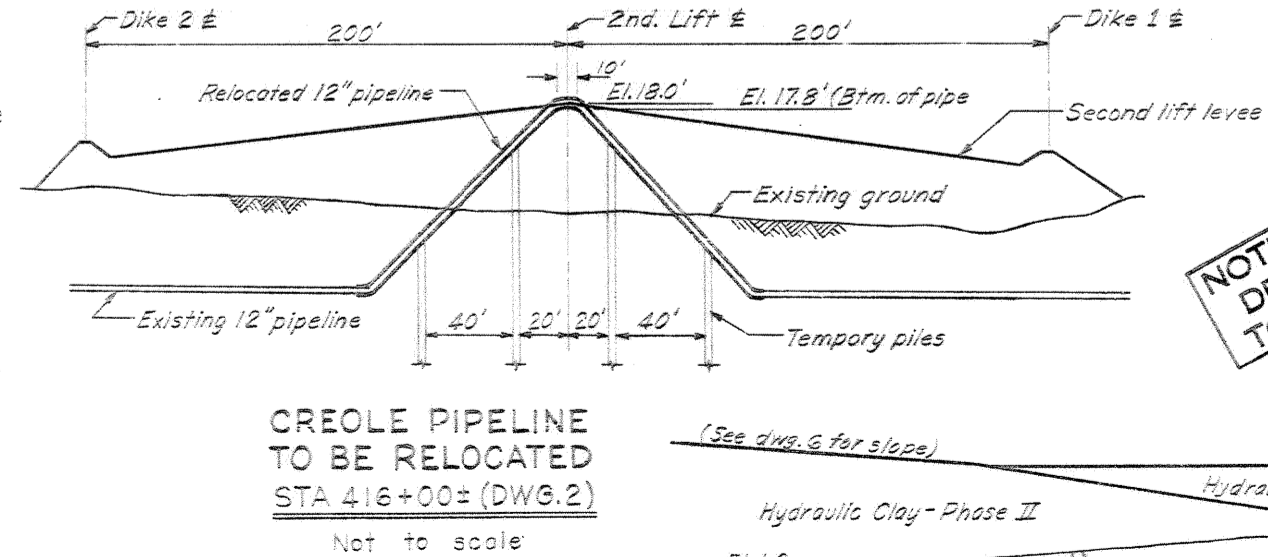
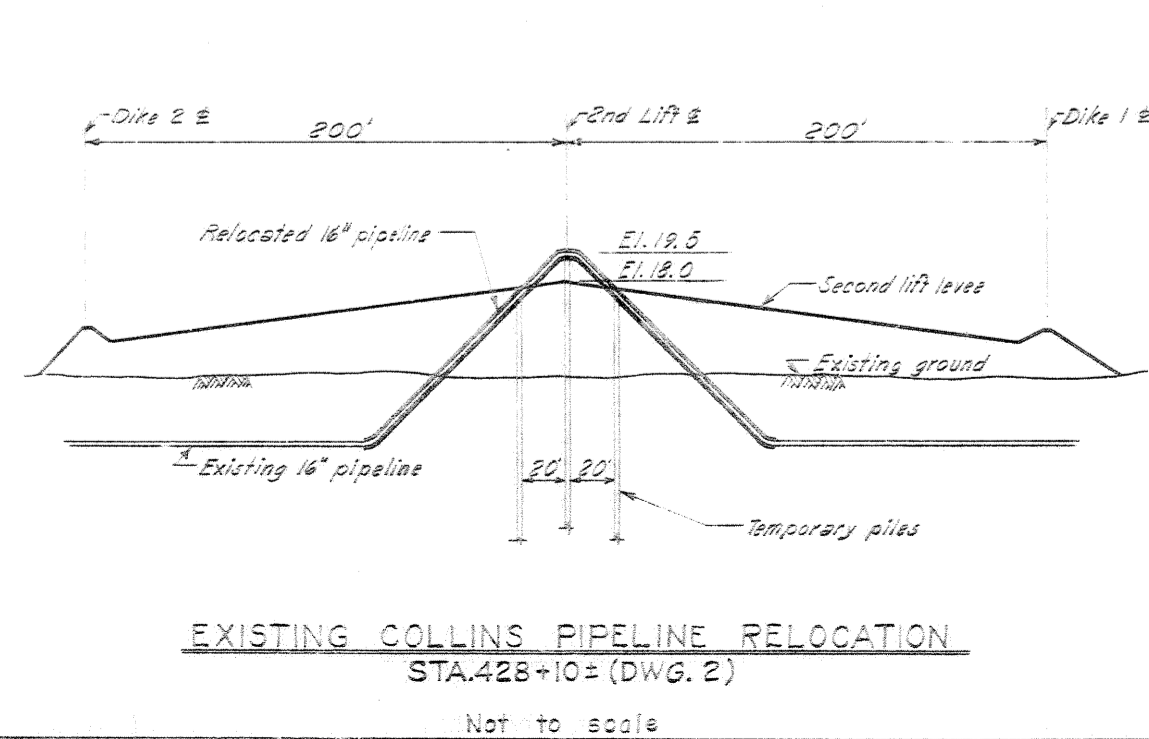
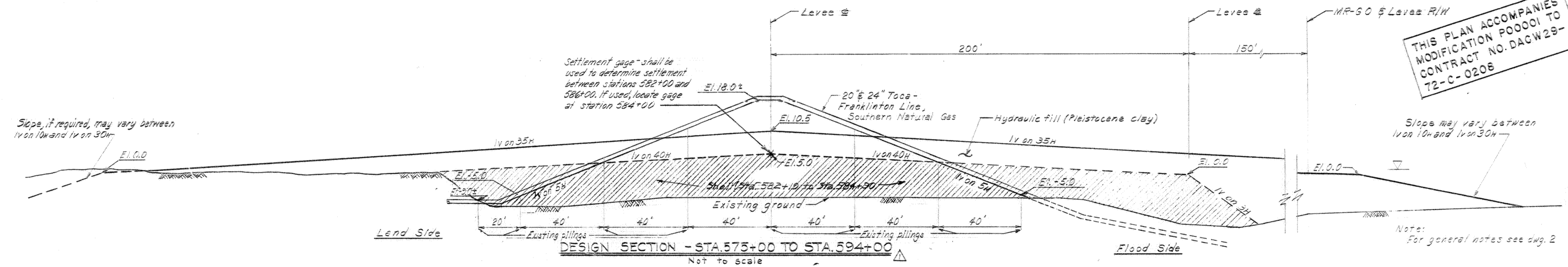
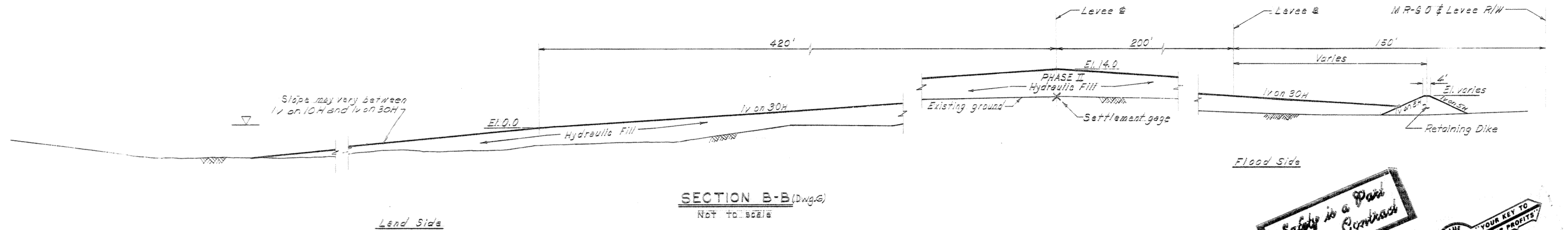
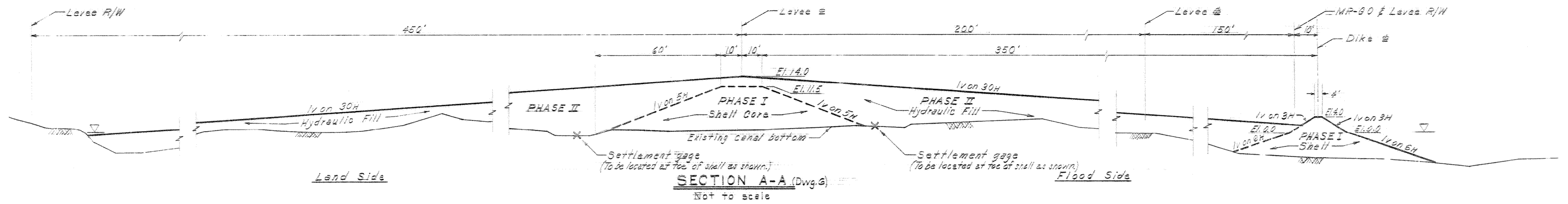
REVISION	DATE	DESCRIPTION	BY

U. S. ARMY ENGINEER DISTRICT, NEW ORLEANS  
CORPS OF ENGINEERS  
NEW ORLEANS, LA.

LAKE PONTCHARTRAIN AND VICINITY  
CHALMETTE AREA PLAN  
HURRICANE PROTECTION LEVEE  
SECOND LIFT  
STA. 370+00 TO STA. 682+00  
ST. BERNARD PARISH, LA.

**BAYOU VILLERE CLOSURE-PLAN**

DESIGNED: G.W.C.	DRAWN: G.P.M.	CHECKED: R.P.L.	DATE: APRIL 1972	SCALE: AS SHOWN	FILE NO. H-8-25894
SPEC. NO. DACW29-72-B-0137			DWG. 6 OF 11		



**Safety is a Part of Your Contract**

VALUE ENGINEERING  
YOUR KEY TO HIGHER PROFITS

THIS PLAN ACCOMPANIES MODIFICATION P0001 TO CONTRACT NO. DACW29-72-C-0208

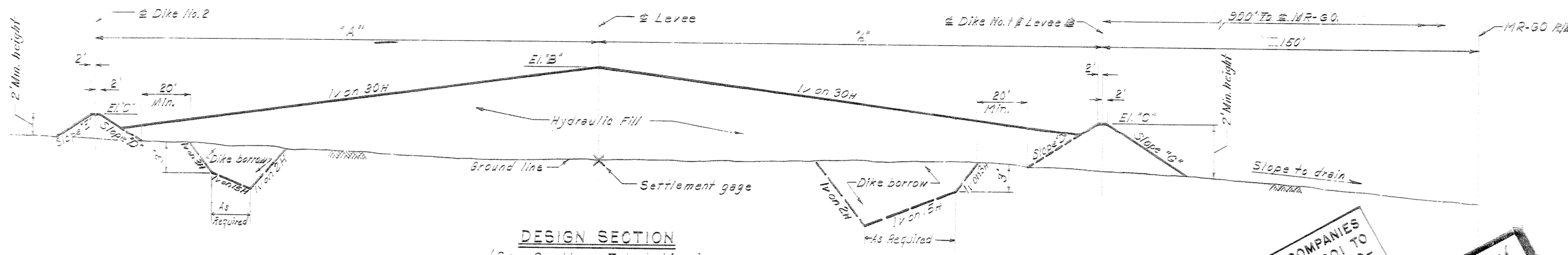
Slope may vary between 1v on 10H and 1v on 30H

Note: For general notes see dwg. 2

**NOTE: DRAWING REDUCED TO ONE HALF SCALE**

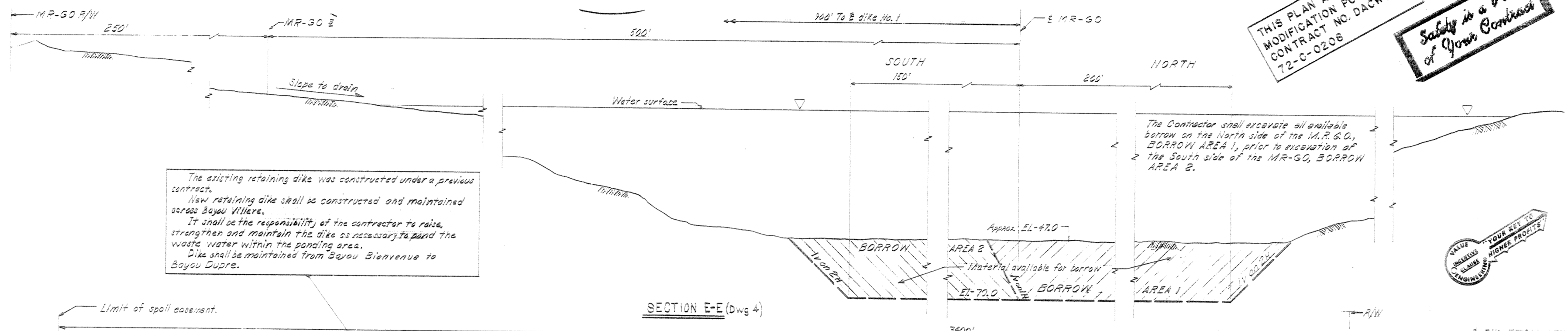
30WART3 Revised design section, Mod. 1				L.E.D.	
REVISION	DATE	DESCRIPTION	BY		
U. S. ARMY ENGINEER DISTRICT, NEW ORLEANS CORPS OF ENGINEERS NEW ORLEANS, LA.					
LAKE PONTCHARTRAIN AND VICINITY CHALMETTE AREA PLAN HURRICANE PROTECTION LEVEE SECOND LIFT STA. 370+00 TO STA. 682+00 ST. BERNARD PARISH, LA.					
<b>TYPICAL DESIGN SECTIONS</b>					
DESIGNED:	DRAWN:	CHECKED:	DATE:	SCALE:	FILE NO.
G.W.O.	S.P.M.	R.P.L.	APRIL 1972	AS SHOWN	<b>H-8-25894</b>
SPEC. NO. DACW29-72-B-0137				DWG. 8 OF 11	

STA. TO STA.	"A"	EL.'B'	EL.'C'	SLOPE'D	SLOPE'E	SLOPE'G
570+00	578+50	TRANSITION (See dwg. 2)				
578+50	583+50	200'	+18.0'	+15.0'	1v on 5H	1v on 5H
583+50	585+00	TRANSITION (See dwg. 3)				
585+00	523+00	See dwg. 7				
523+00	524+20	TRANSITION (See dwg. 4)				
524+20	572+75	150'	+18.0'	+15.0'	1v on 4H	1v on 4H
572+75	575+00	TRANSITION (See dwg. 4)				
575+00	594+00	See dwg. 3				
594+00	596+25	TRANSITION (See dwg. 4)				
596+25	680+00	150'	+18.0'	+15.0'	1v on 4H	1v on 4H
680+00	682+00	TRANSITION (See dwg. 3)				



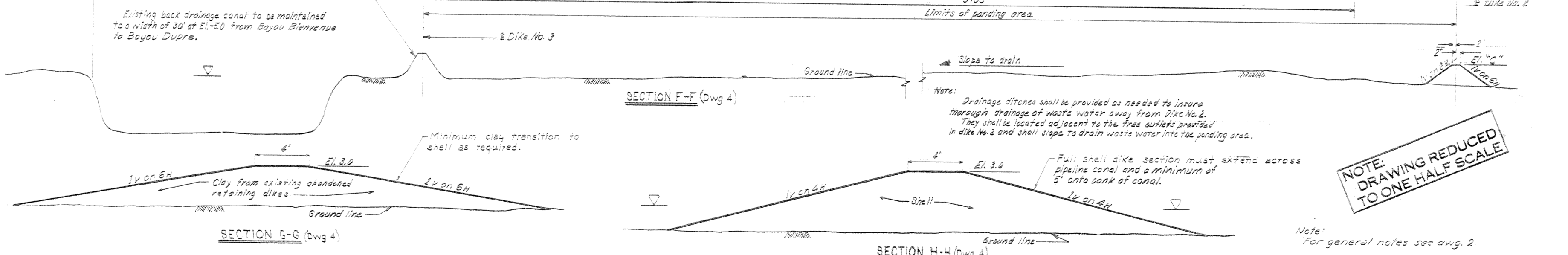
THIS PLAN ACCOMPANIES MODIFICATION P00001 TO CONTRACT NO. DACW 29-72-C-0208

*Safety is a Part of Your Contract*



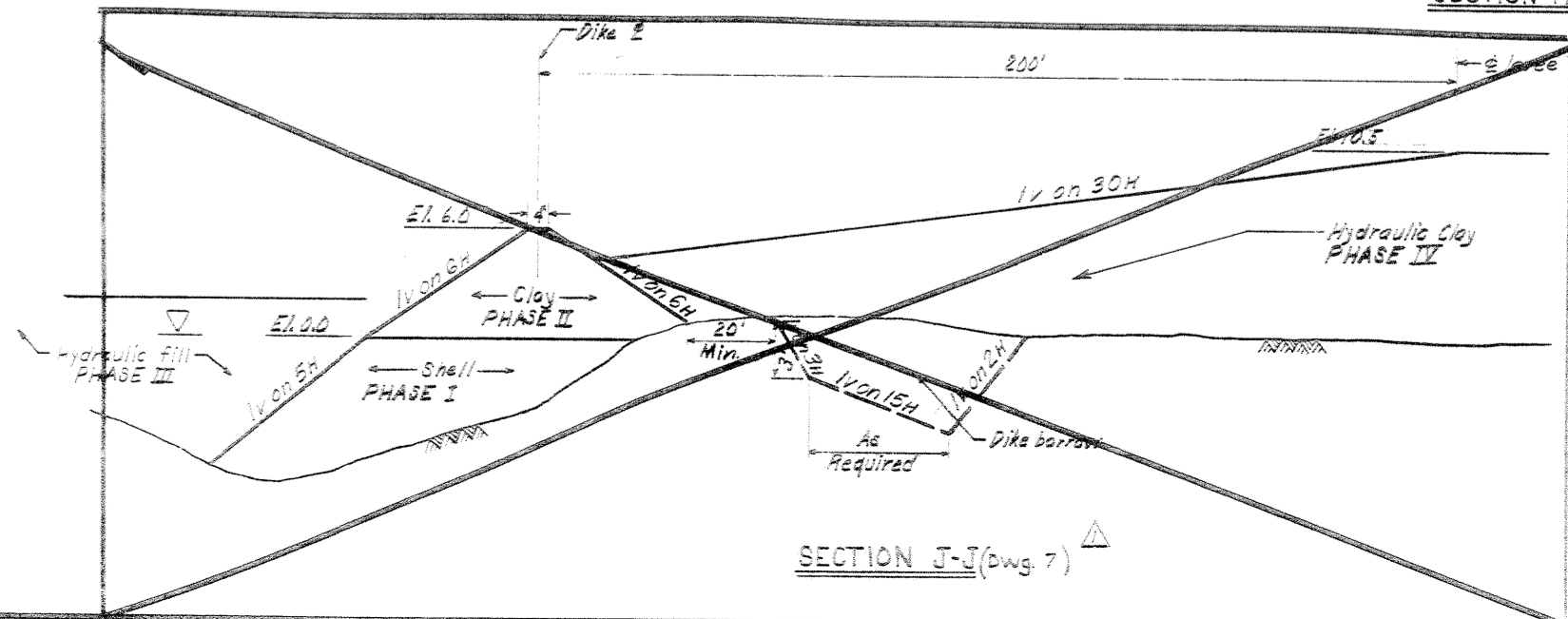
The existing retaining dike was constructed under a previous contract. New retaining dike shall be constructed and maintained across Bayou Villere. It shall be the responsibility of the contractor to raise, strengthen and maintain the dike as necessary to pond the waste water within the ponding area. Dike shall be maintained from Bayou Bienvenue to Bayou Dupre.

VALUE ENGINEERING YOUR KEY TO HIGHER PROFITS



NOTE: DRAWING REDUCED TO ONE HALF SCALE

Note: For general notes see dwg. 2.



Settlement gages may be installed at locations shown on the Levee Design Sections (see 3-17.3 of specs.) The contractor may at his option install additional settlement gages. The length of the settlement measurement range for any settlement measurement gage shall not exceed 400 feet and shall extend for a maximum distance of 200 feet on each side of the settlement measurement gage, measured along the centerline of the embankment except where gages are placed at less than 500 foot intervals, in which case the settlement measurement range shall be to a point 1/2 the distance between.

SETTLEMENT MEASUREMENT GAGE  
Steel Plate, Square  
Minimum 4x4 1/2" (10 gage)

REVISION	DATE	DESCRIPTION	BY
1		Deleted section V-J (Dwg. 7) Mod. 1	

U. S. ARMY ENGINEER DISTRICT, NEW ORLEANS  
CORPS OF ENGINEERS  
NEW ORLEANS, LA.

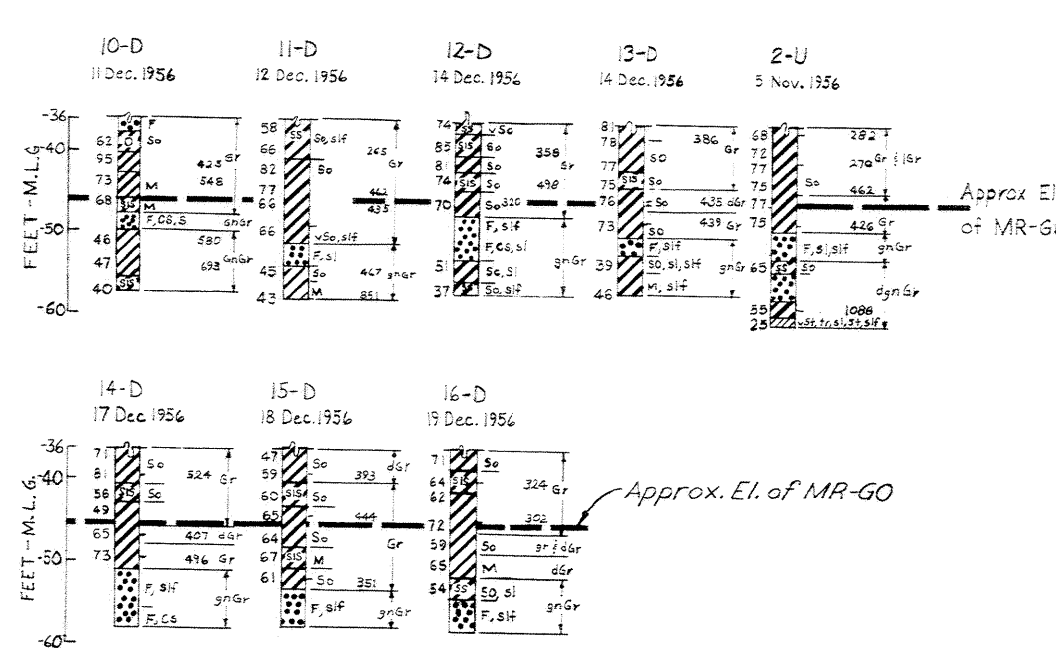
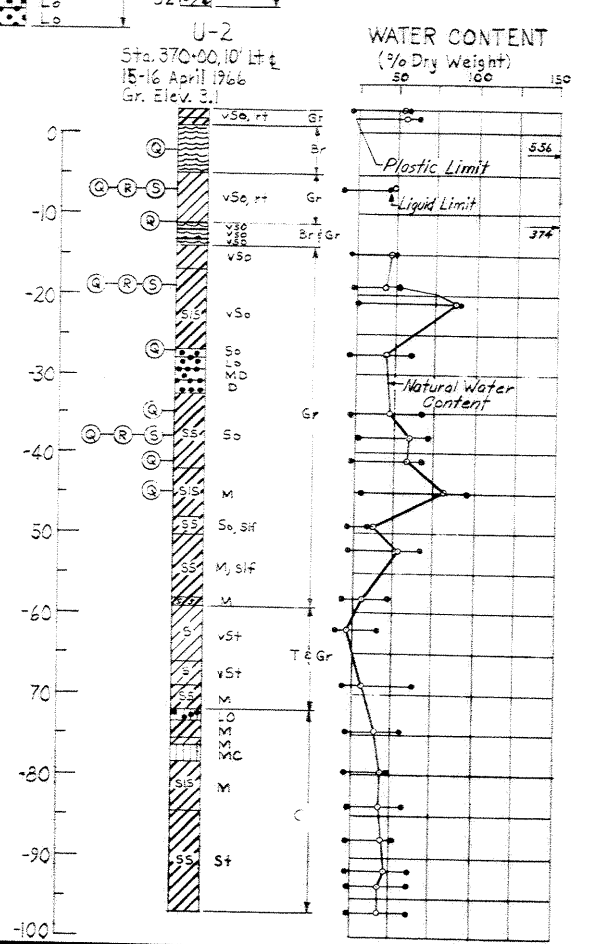
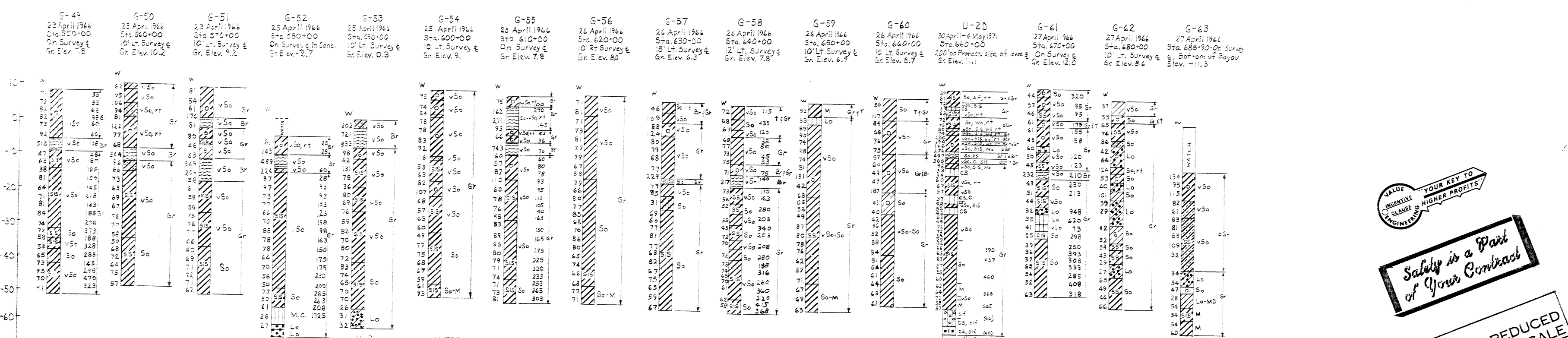
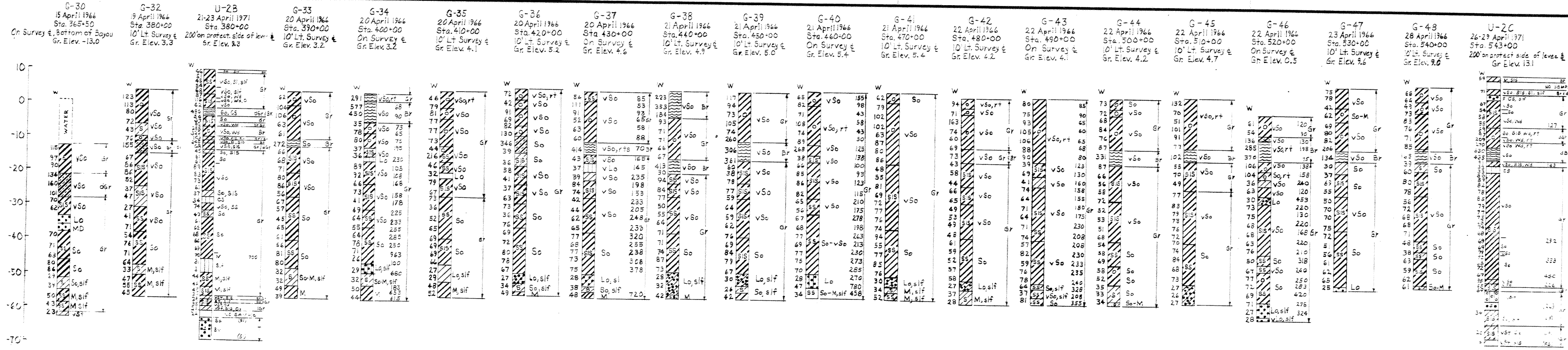
LAKE PONTCHARTRAIN AND VICINITY  
CHALMETTE AREA PLAN  
HURRICANE PROTECTION LEVEE  
SECOND LIFT  
STA. 370+00 TO STA. 682+00  
ST. BERNARD PARISH, LA.

**TYPICAL DESIGN SECTIONS**

DESIGNED:	DRAWN:	CHECKED:	DATE:	SCALE:	FILE NO.:
S.W.O.	S.R.M.	R.P.L.	APRIL 1972	AS SHOWN	H-8-25894

SPEC. NO. DACW29-72-B-0137 DWG. 9 OF 11





INCENTIVE  
CLAUSE  
ENGINEERS

YOUR KEY TO  
HIGHER PROFITS

Safety is a Part  
of Your Contract

NOTE:  
DRAWING REDUCED  
TO ONE HALF SCALE

Notes:  
For general notes see dwg. 2.  
For soil boring legend see dwg. 11.

REVISION	DATE	DESCRIPTION	BY
U. S. ARMY ENGINEER DISTRICT, NEW ORLEANS CORPS OF ENGINEERS NEW ORLEANS, LA.			
LAKE PONTCHARTRAIN AND VICINITY CHALMETTE AREA PLAN HURRICANE PROTECTION LEVEE SECOND LIFT STA. 370+00 TO STA. 682+00 ST. BERNARD PARISH, LA.			
<b>SOIL BORINGS</b>			
DESIGNED:	DRAWN:	CHECKED:	DATE:
G.W.O.	P.L.O.	R.P.L.	APRIL 1972
SCALE:		AS SHOWN	
FILE NO.:		H-8-25894	
SPEC. NO.:		DACW29-72-B-0137	
DWG NO.:		10 OF 11	

NOTE:  
All "D" borings taken prior to dredging of the MR-GO

### UNIFIED SOIL CLASSIFICATION

MAJOR DIVISION	TYPE	LETTER SYMBOL	SYM BOL	TYPICAL NAMES	
COARSE - GRAINED SOILS More than half of material is larger than No. 200 sieve size	GRAVELS More than half of coarse fraction is larger than No. 4 sieve size	CLEAN GRAVEL (Little or No Fines)	GW	GRAVEL, Well Graded, gravel-sand mixtures, little or no fines	
		GRAVEL WITH FINES (Appreciable Amount of Fines)	GP	GRAVEL, Poorly Graded, gravel-sand mixtures, little or no fines	
		SANDS WITH FINES (Appreciable Amount of Fines)	SW	SAND, Well - Graded, gravelly sands	
			SP	SAND, Poorly - Graded, gravelly sands	
	SANDS More than half of coarse fraction is smaller than No. 4 sieve size	CLEAN SAND (Little or No Fines)	SM	SILTY SAND, sand-silt mixtures	
		SANDS WITH FINES (Appreciable Amount of Fines)	SC	CLAYEY SAND, sand-clay mixtures	
		FINE - GRAINED SOILS More than half the material is smaller than No. 200 sieve size	SILTS AND CLAYS (Liquid Limit < 50)	ML	SILT & very fine sand, silty or clayey fine sand or clayey silt with slight plasticity
				CL	LEAN CLAY, Sandy Clay, Silty Clay, of low to medium plasticity
			SILTS AND CLAYS (Liquid Limit > 50)	MH	SILT, fine sandy or silty soil with high plasticity
				CH	FAT CLAY, inorganic clay of high plasticity
HIGHLY ORGANIC SOILS	OH	ORGANIC CLAYS of medium to high plasticity, organic silts			
WOOD	Pt	PEAT, and other highly organic soil			
WOOD	Wd	WOOD			
SHELLS	SI	SHELLS			
NO SAMPLE					

NOTE: Soils possessing characteristics of two groups are designated by combinations of group symbols

### DESCRIPTIVE SYMBOLS

COLOR		CONSISTENCY FOR COHESIVE SOILS			MODIFICATIONS	
COLOR	SYMBOL	CONSISTENCY	COHESION IN LBS./SQ. FT. FROM UNCONFINED COMPRESSION TEST	SYMBOL	MODIFICATION	SYMBOL
TAN	T				Traces	Tr-
YELLOW	Y				Fine	F
RED	R	VERY SOFT	< 250	vSo	Medium	M
BLACK	BK	SOFT	250 - 500	So	Coarse	C
GRAY	Gr	MEDIUM	500 - 1000	M	Concretions	cc
LIGHT GRAY	lGr	STIFF	1000 - 2000	St	Rootlets	rt
DARK GRAY	dGr	VERY STIFF	2000 - 4000	vSt	Lignite fragments	lg
BROWN	Br	HARD	> 4000	H	Shale fragments	sh
LIGHT BROWN	lBr				Sandstone fragments	sds
DARK BROWN	dBr				Shell fragments	sif
BROWNISH - GRAY	br Gr				Organic matter	O
GRAYISH - BROWN	gy Br				Clay strata or lenses	CS
GREENISH - GRAY	gn Gr				Silt strata or lenses	SIS
GRAYISH - GREEN	gy Gn				Sand strata or lenses	SS
GREEN	Gn				Sandy	S
BLUE	Bl				Gravelly	G
BLUE - GREEN	Bl Gn				Boulders	B
WHITE	Wh				Slickensides	SL
MOTTLED	Mot				Wood	Wd
					Oxidized	Ox

PLASTICITY CHART  
For classification of fine-grained soils

### NOTES:

FIGURES TO LEFT OF BORING UNDER COLUMN "W OR D<sub>10</sub>"

Are natural water contents in percent dry weight  
When underlined denotes D<sub>10</sub> size in mm\*

FIGURES TO LEFT OF BORING UNDER COLUMNS "LL" AND "PL"

Are liquid and plastic limits, respectively

### SYMBOLS TO LEFT OF BORING

▽ Ground-water surface and date observed

⊙ Denotes location of consolidation test\*\*

⊙ Denotes location of consolidated - drained direct shear test\*\*

⊙ Denotes location of consolidated - undrained triaxial compression test\*\*

⊙ Denotes location of unconsolidated - undrained triaxial compression test\*\*

⊙ Denotes location of sample subjected to consolidation test and each of the above three types of shear tests\*\*

FW Denotes free water encountered in boring or sample

### FIGURES TO RIGHT OF BORING

Are values of cohesion in lbs./sq. ft. from unconfined compression tests

In parenthesis are driving resistances in blows per foot determined with a standard split spoon sampler (1 3/8" I.D., 2" O.D.) and a 140 lb. driving hammer with a 30" drop

Where underlined with a solid line denotes laboratory permeability in centimeters per second of undisturbed sample

Where underlined with a dashed line denotes laboratory permeability in centimeters per second of sample remoulded to the estimated natural void ratio

\*The D<sub>10</sub> size of a soil is the grain diameter in millimeters of which 10% of the soil is finer, and 90% coarser than D<sub>10</sub>

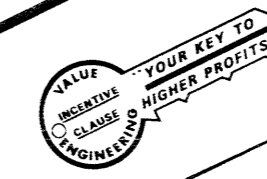
\*\*Results of these tests are available for inspection in the U.S. Army Engineer District Office, if these symbols appear beside the boring logs on the drawings

### TYPICAL NOTES:

While the borings are representative of subsurface conditions at their respective locations and for their respective vertical reaches, local variations characteristic of the subsurface materials of the region are anticipated and, if encountered, such variations will not be considered as differing materially within the purview of clause 4 of the contract.

Ground-water elevations shown on the boring logs represents ground-water surfaces encountered on the dates shown. Absence of water surface data on certain borings implies that no ground-water data is available, but does not necessarily mean that ground water will not be encountered at the locations or within the vertical reaches of these borings.

Consistency of cohesive soils shown on the boring logs is based on driller's log and visual examination and is approximate, except within those vertical reaches of the borings where shear strengths from unconfined compression tests are shown.



NOTE:  
DRAWING REDUCED  
TO ONE HALF SCALE

REVISION	DATE	DESCRIPTION	BY
U. S. ARMY ENGINEER DISTRICT, NEW ORLEANS CORPS OF ENGINEERS NEW ORLEANS, LA.			
LAKE PONTCHARTRAIN AND VICINITY CHALMETTE AREA PLAN HURRICANE PROTECTION LEVEE SECOND LIFT STA. 370+00 TO STA. 682+00 ST. BERNARD PARISH, LA.			
<b>SOIL BORING LEGEND</b>			
DESIGNED: G.W.O.	DRAWN: E.M.M.	CHECKED: R.P.L.	DATE: APRIL 1972
SCALE: AS SHOWN		FILE NO. H-8-25894	
SPEC. NO. DACW29-72-B-0137		DWG. II	