

A0001770

Citrus Lakelront
Floodwall
Test Pile Results
Site #1

A-0001770

LMNED-FS

Lake Pontchartrain, La. & Vicinity, Citrus Lakefront
Floodwall, Pile Test at Site #1, New Orleans Airport,
Contract No. DACW29-79-L-0286

C/Const Div

C/Engr Div

28 Jan 80
Mr. Richardson/mlm/1051

1. The results of the subject pile tests which were hand-carried to us by the Area Office have been reviewed.
2. Based on the capacities demonstrated in the compression and tension pile tests of the 12"x12" prestressed, precast concrete piles, the design elevation should be set at -55.0 m.s.l.

CHATRY

Picciola
LMNED-F

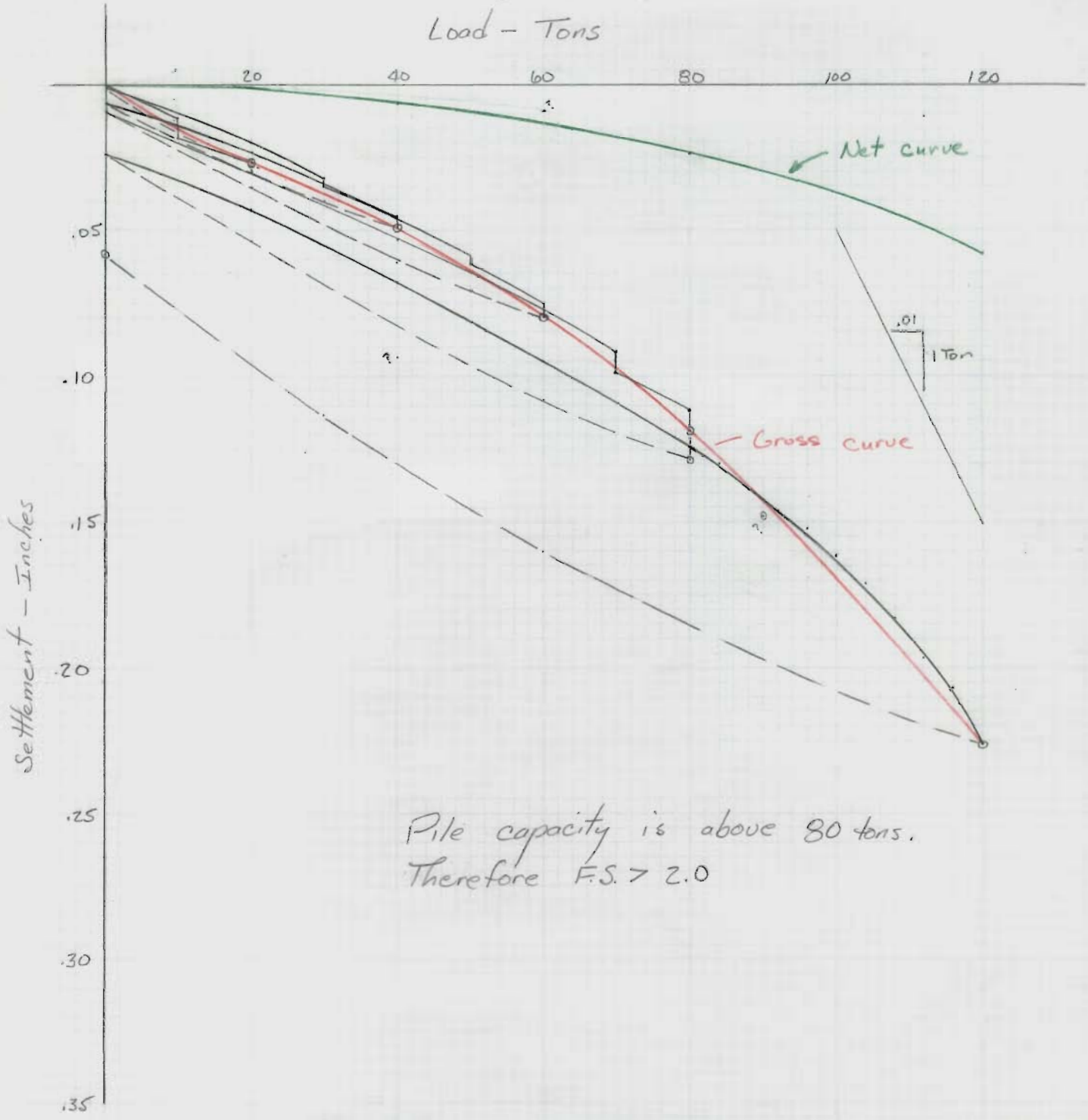
Judlin
LMNED-D

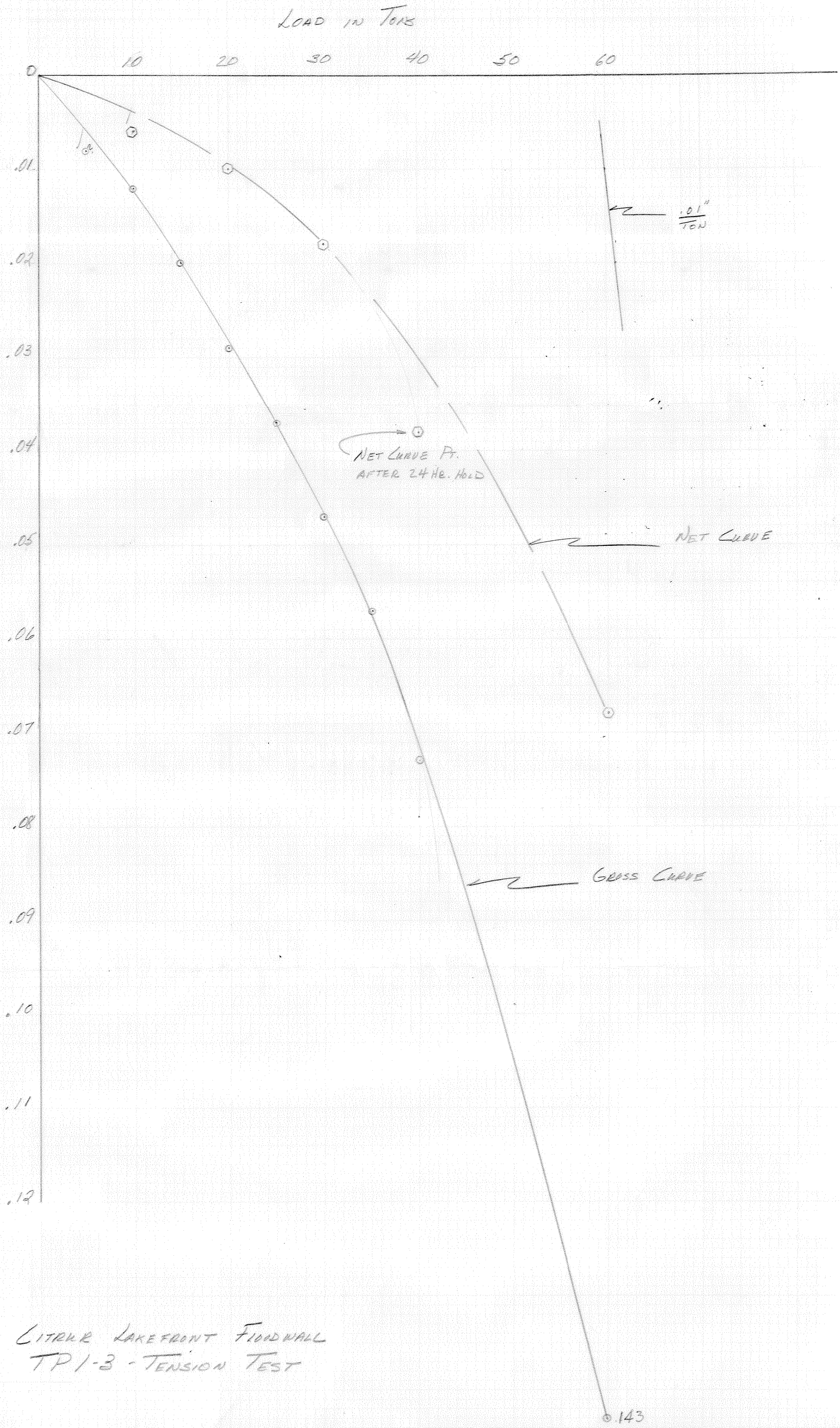
BY JR DATE 10 Jan 80
CHKD. BY _____ DATE _____

SUBJECT Citrus Lakefront Floodwall
Test Pile TP1-3
Compression Test

SHEET NO. _____ OF _____
JOB NO. _____

Preliminary Capacity check





LITTLE LAKEFRONT FLOODWALL
 TP1-3 - TENSION TEST

143

Citrus Lakefront Levee
 Pile Test on TP1-3

Received via phone
 from Ward Pardum
 10 Jan 80
 JR

COMPRESSION PILE TEST SCHEDULE

LOAD (TONS)	ELAPSED TIME	INCREM. TIME	REMARKS
0	0:00	-- 0	
10	0:05	5 Min. .011	25% design load
	0:07	2 "	
	0:13	8 "	
	0:20	15 "	
	0:35	30 "	
	1:05	60 "	
	2:05	120 " .018	
20	2:10	5 " .027	50% design load
	2:12	2 "	
	2:18	8 "	
	2:25	15 "	
	2:40	30 "	
	3:10	60 "	
	4:10	120 " .027	
10	4:15	5 "	Decrement 25%
	4:35	20 "	
0	4:40	5 "	Decrement 0%
	5:00	20 " .001	
20	5:10	10 " .019	Increment 50%
	5:30	20 " .020	
30	5:35	5 " .032	75% design load
	5:37	2 "	
	5:43	8 "	
	5:50	15 "	
	6:05	30 "	
	6:35	60 "	
	7:35	120 " .035	
40	7:40	5 " .045	100% design load
	7:42	2 "	
	7:48	8 "	
	7:55	15 "	
	8:10	30 "	
	8:40	60 "	
	9:40	120 " .049	
30	9:45	5 "	Decrement 75%
	10:05	20 " .040	
20	10:10	5 "	Decrement 50%
	10:30	20 " .029	
0	10:35	5 "	Decrement 0%
	10:55	20 " .007	
20	11:05	10 "	Increment 50%
	11:25	20 " .023	
40	11:35	10 "	Increment 100%

For Tension Test reduce load and load application time accordingly.

COMPRESSION PILE TEST SCHEDULE (CON'T)

LOAD (TONS)	ELAPSED TIME	INCREM. TIME	REMARKS		
50	11:55	20 Min..046	125% design load		
	12:00	5 " .059			
	12:02	2 "			
	12:08	8 "			
	12:15	15 "			
	12:30	30 "			
	13:00	60 "			
60	14:00	120 " .061	150% design load		
	14:05	5 " .075			
	14:07	2 "			
	14:13	8 "			
	14:20	15 "			
	14:35	30 "			
	15:05	60 "			
50	16:05	120 " .080	Decrement 125%		
	16:10	5 "			
40	16:30	20 " .071	Decrement 100%		
	16:35	5 "			
20	16:55	20 " .061	Decrement 50%		
	17:05	10 "			
0	17:25	20 " .035	Decrement 0%		
	17:35	10 "			
20	17:55	20 " .009	Increment 50%		
	18:05	10 "			
40	18:25	20 " .028	Increment 100%		
	18:35	10 "			
60	18:55	20 " .053	Increment 150%		
	19:05	10 "			
70	19:25	20 " .077	175% design load		
	19:30	5 " .092			
	19:32	2 "			
	19:38	8 "			
	19:45	15 "			
	20:00	30 "			
	20:30	60 "			
	21:30	120 " .099			
	80	21:35		5 " .111	200% design load Continue to hold load for 24 hrs. If settlement is greater than .01 in/hr hold the load for 48 hrs.
		21:37		2 "	
21:43		8 "			
21:50		15 "			
22:05		30 "			
22:35		60 "			
23:35		120 " .119			

For Tension Test reduce load and load application time accordingly.

COMPRESSION PILE TEST SCHEDULE (CON'T)

LOAD (TONS)	ELAPSED TIME	INCREM. TIME	REMARKS
	0:35	3 hr.	
	1:35	4 "	
	2:35	5 "	
	.	.	
	.	.	
	20:35	23 "	
	21:35	24 " .129	
60	21:45	10 Min.	Decrement 150%
	22:05	20 "	
	22:25	40 "	
	22:45	60 " .108	
40	22:55	10 "	Decrement 100%
	23:15	20 "	
	23:35	40 "	
	23:55	60 " .094	
20	0:05	10 "	Decrement 50%
	0:25	20 "	
	0:45	40 "	
	1:05	60 " .054	
0	1:15	10 "	Decrement 0%
	1:35	20 "	
	1:55	40 "	
	2:15	60 " .024	
20	2:25	10 "	50% Increment
	2:45	20 " .043	
40	2:55	10 "	100% Increment
	3:15	20 " .068	
60	3:25	10 "	150% Increment
	3:45	20 " .095	
80	3:55	10 "	200% Increment
	4:15	20 " .124	
84	4:17	2 "	210% Increment

For Tension Test reduce load and load application time accordingly.

COMPRESSION PILE TEST SCHEDULE (CON'T)

LOAD (TONS)	ELAPSED TIME	INCREM. TIME	REMARKS
	4:37	20 Min. .130	
88	4:39	2 "	220% Increment
	4:59	20 ".139	
92	5:01	2 "	230% Increment
	5:21	20 ".146	
96	5:23	2 "	240% Increment
	5:43	20 ".152	
100	5:45	2 "	250% Increment
	6:05	20 ".162	
104	6:07	2 "	260% Increment
	6:27	20 ".171	
108	6:29	2 "	270% Increment
	6:49	20 ".183	
112	6:51	2 "	280% Increment
	7:11	20 ".197	
116	7:13	2 ".207	290% Increment
	7:33	20 "	
120	7:35	2 "	300% Increment
	7:55	20 ".226	
	8:15	40 "	
	8:35	60 "	
	8:55	80 "	
	9:15	100 "	
	9:35	120 ".226	
90	9:50	15 "	
	10:10	20 ".148 ← ?	
60	10:25	15 "	
	10:45	20 ".160	
30	11:00	15 "	
	11:20	20 ".113	
0	11:35	15 "	
	11:55	20 ".058	
			END OF TEST

For Tension Test reduce load and load application time accordingly.