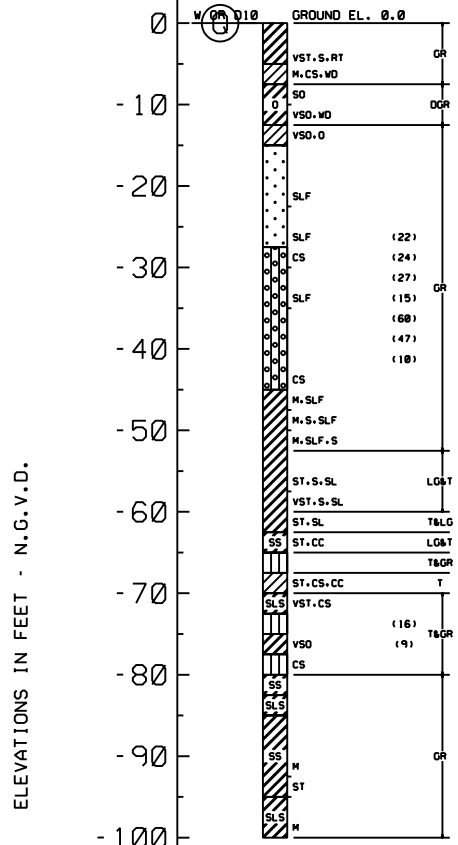
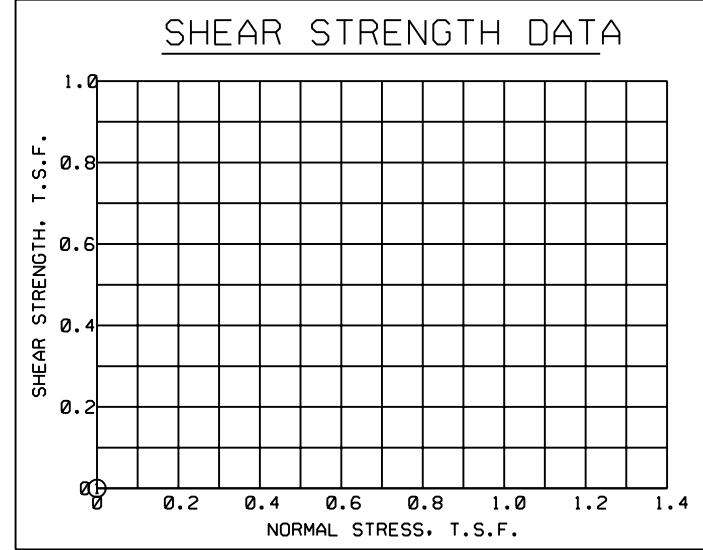
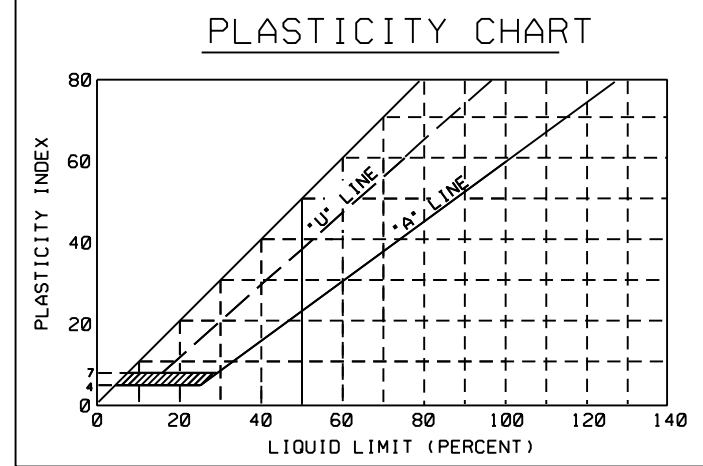
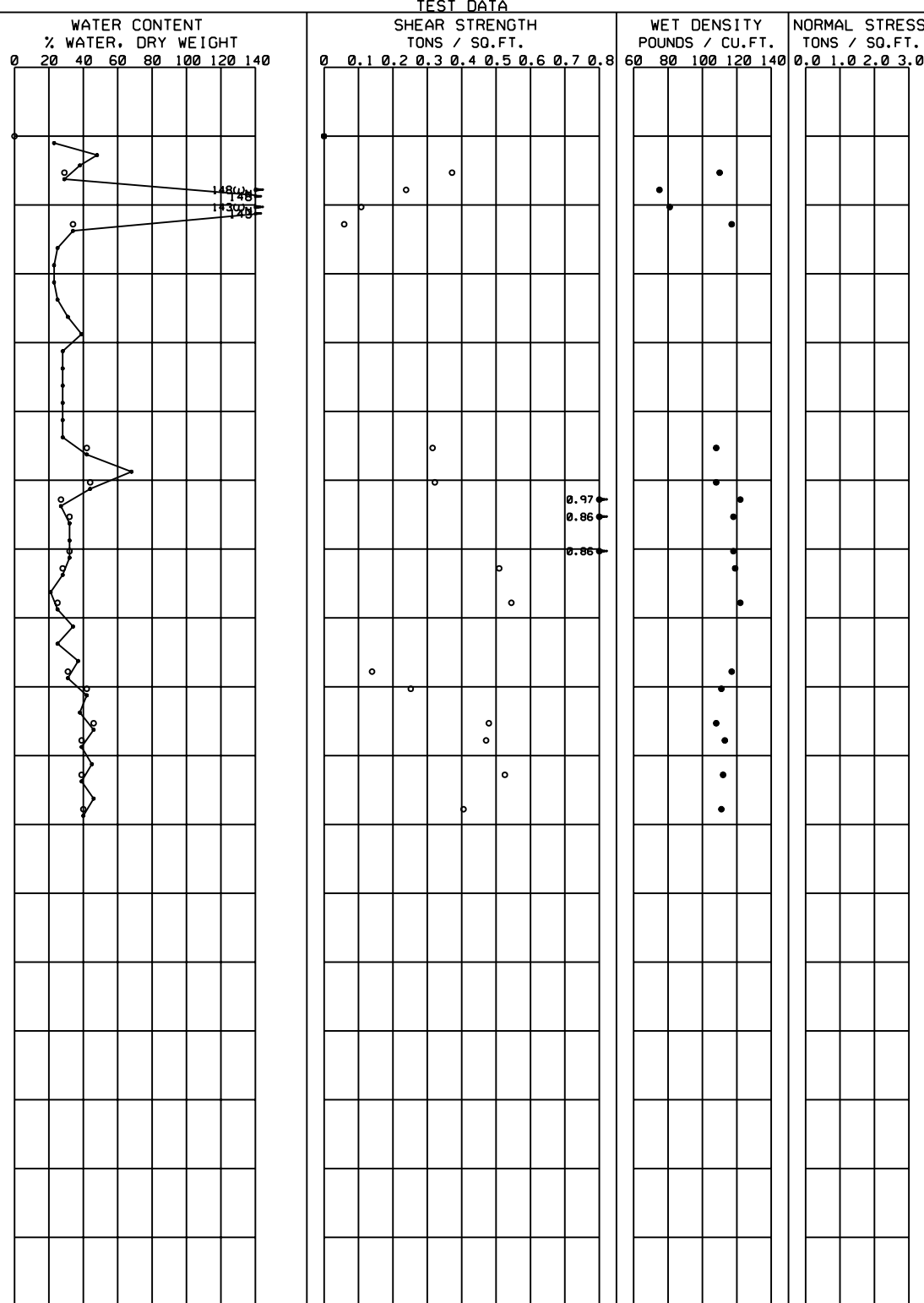


BOR. LAC05-3G
 STA. LAT N 30°01'26.10" LONG W 90°04'12.42"
 13-14 JULY 2005



ELEVATIONS IN FEET - N.G.V.D.




TABULAR TEST DATA

ENVELOPE NO.	EL.	TYPE	STRENGTH		CLASS
			ϕ	c - TSF	
1	0.0	0	0.0	0.000	

NOTES

○ - (UC) UNCONFINED COMPRESSION TEST
 ■ - (O) UNCONSOLIDATED - UNDRAINED TRIAXIAL SHEAR TEST
 ▲ - (R) CONSOLIDATED - UNDRAINED TRIAXIAL SHEAR TEST
 □ - (S) CONSOLIDATED - DRAINED DIRECT SHEAR TEST
 ω_p ω_N ω_L ATTERBERG LIMITS
 BORING WAS TAKEN WITH A 5 INCH DIAMETER
 STEEL TUBE PISTON TYPE SAMPLER.
 FOR SOIL BORING LEGEND SEE PLATE A.
 FOR LOCATION OF BORINGS SEE PLATE
 FOR DETAILED TEST DATA SEE



U.S. ARMY ENGINEER DISTRICT, NEW ORLEANS
 CORPS OF ENGINEERS
 NEW ORLEANS, LOUISIANA

DESIGNED BY: PLOT SCALE: PLOT DATE: CAD FILE:
 DRAWN BY: DATE: FILE NO.
 CHECKED BY: