

*Interagency Performance Evaluation
Task Force (IPET)*

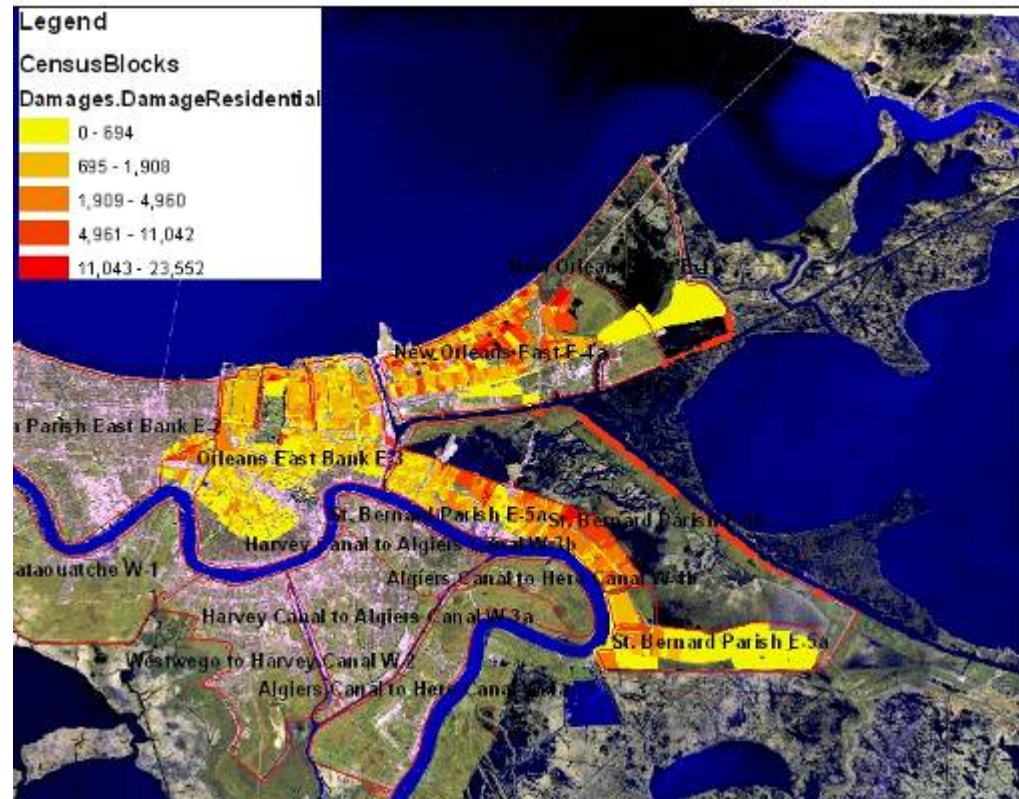
Consequence Assessment: Loss Analysis

David Moser, Ph.D., Chief Economist, USACE
Patrick Canning, Ph.D., Senior Economist, USDA



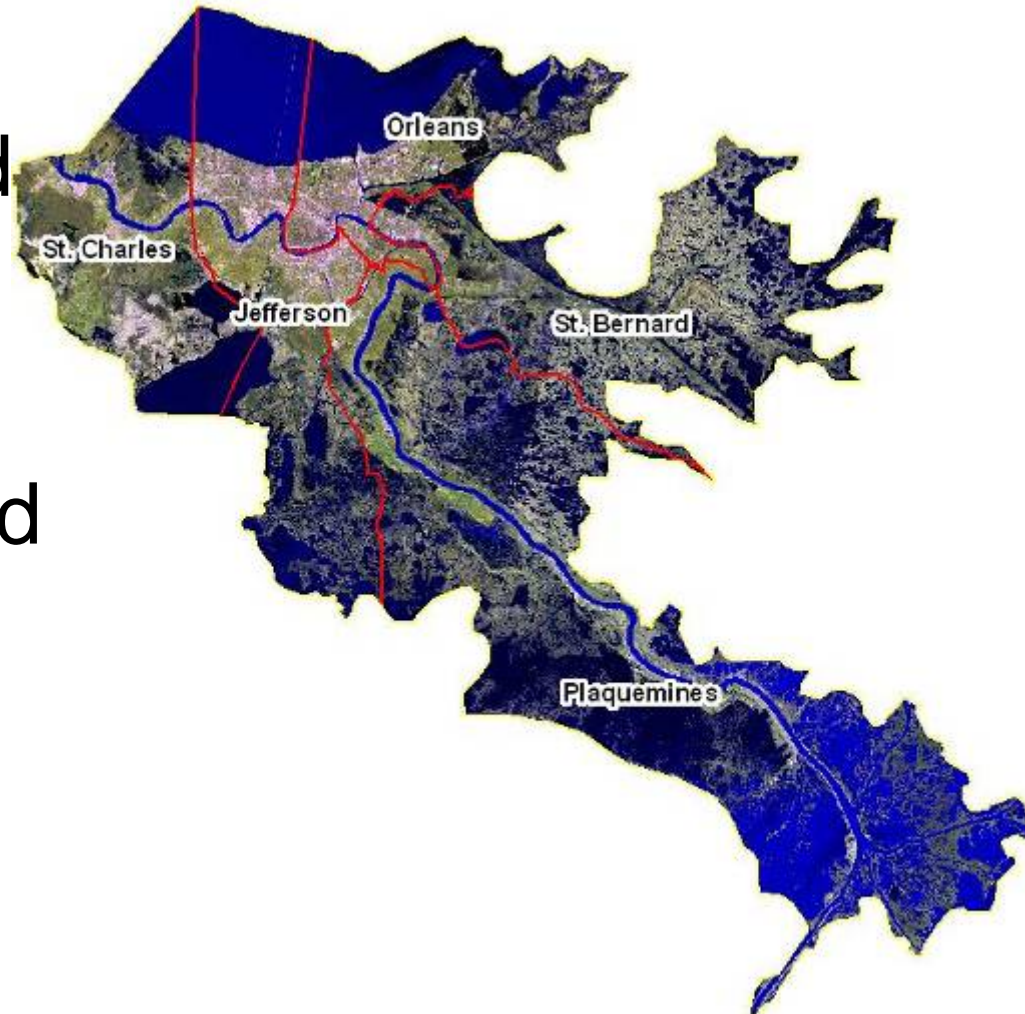
Overview

- Develop an assessment of losses resulting from hurricane Katrina and estimates of direct economic losses and potential fatalities for risk assessment



Loss Categories

- Economic
- Human Health and Safety
- Environmental
- Social, Cultural and Historical

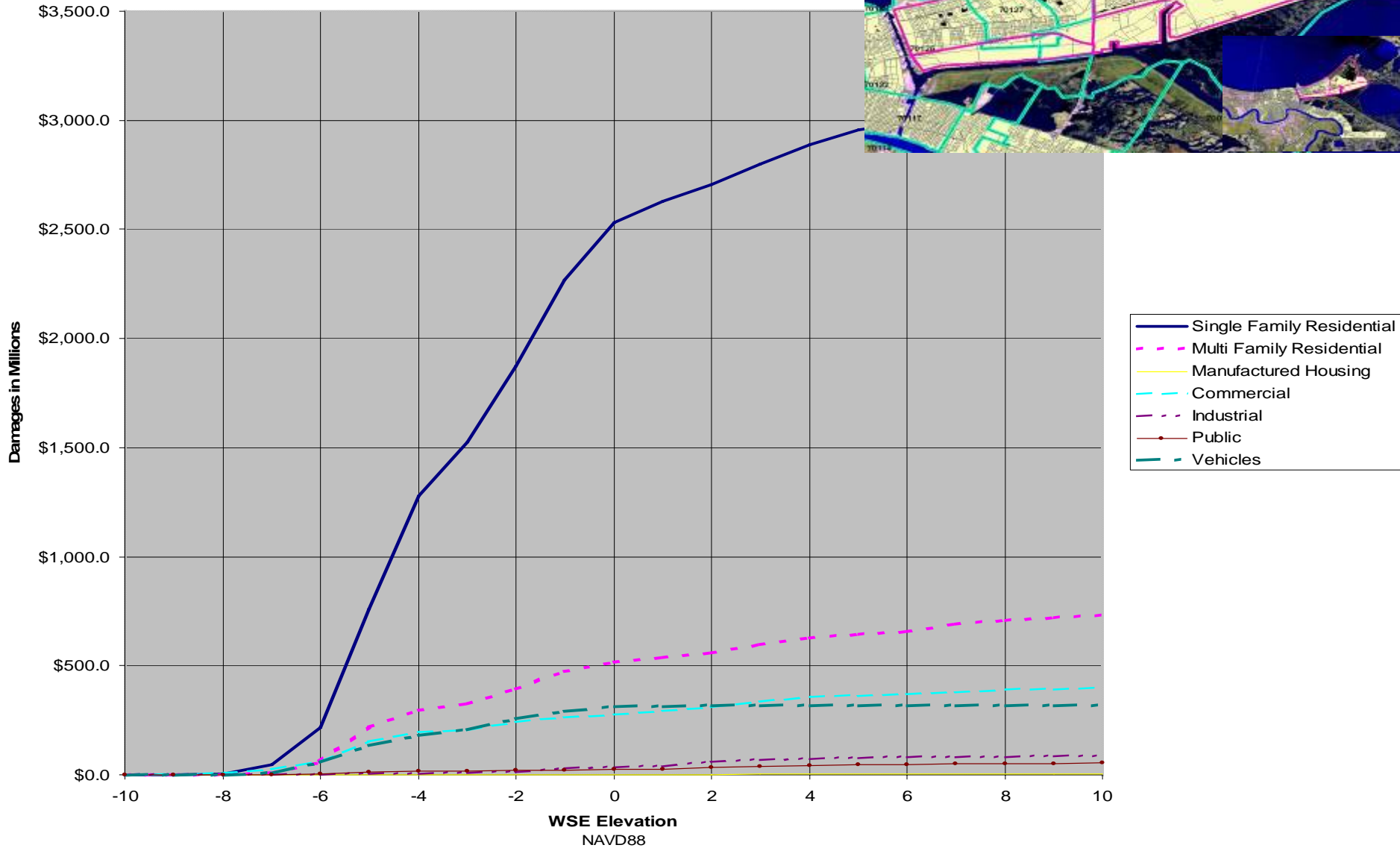


Direct Economic Consequences

- Develop flood elevation-property damage relationships by polder sub-basin
 - Residential
 - Single Family
 - Multifamily
 - Manufactured Housing
 - Commercial
 - Industrial
 - Vehicles
 - Public
 - Public Utilities

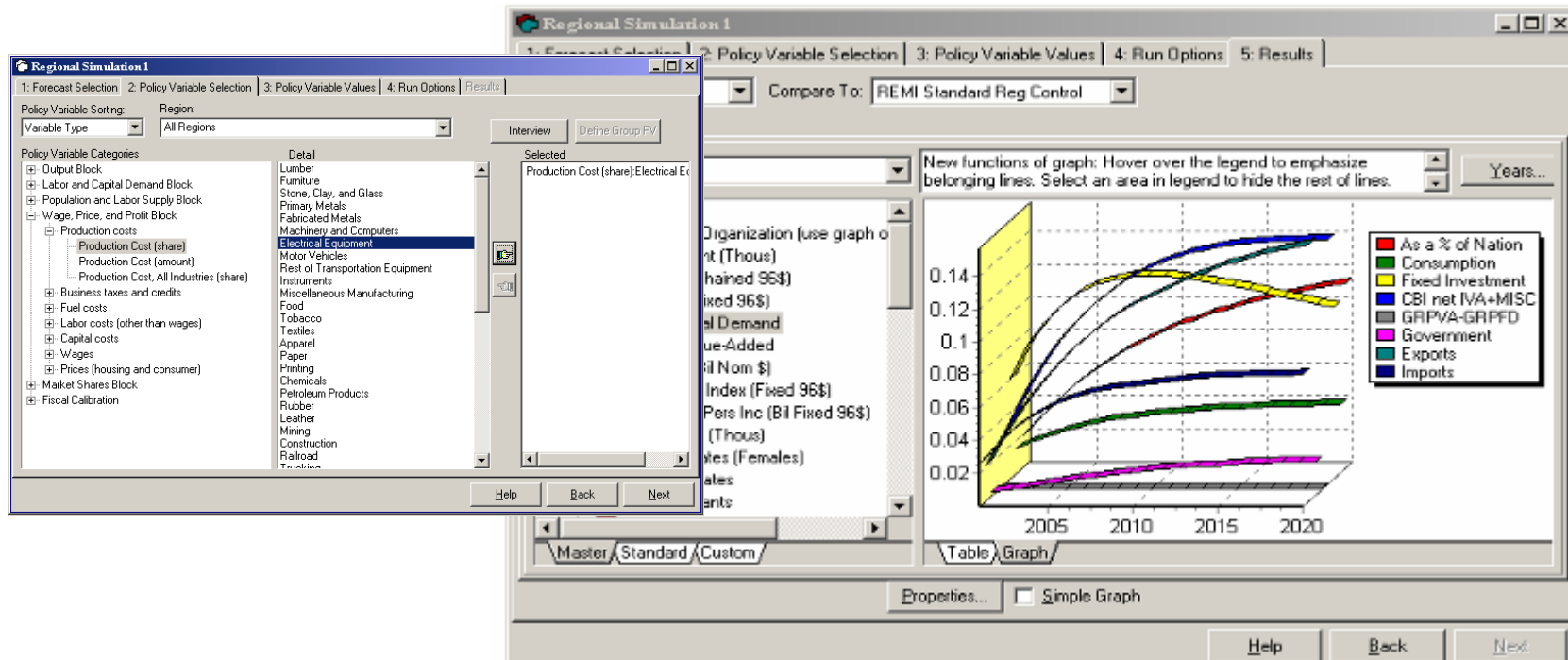


New Orleans East: Preliminary Elevation - Flood Damage (mean values)



Indirect Economic Consequences

- Local/regional/national economic impacts of Katrina
- Changes in the structure of the regional economy from pre-Katrina levels



Human Health & Safety (HHS)

- Impacts on N.O. residents from Katrina
 - Descriptive account of actual and potential HHS impacts
 - Susceptible subgroups, onset & duration, effects on others
- Potential mortality risks of post-Katrina scenarios

Katrina Post-Mortem Statistics

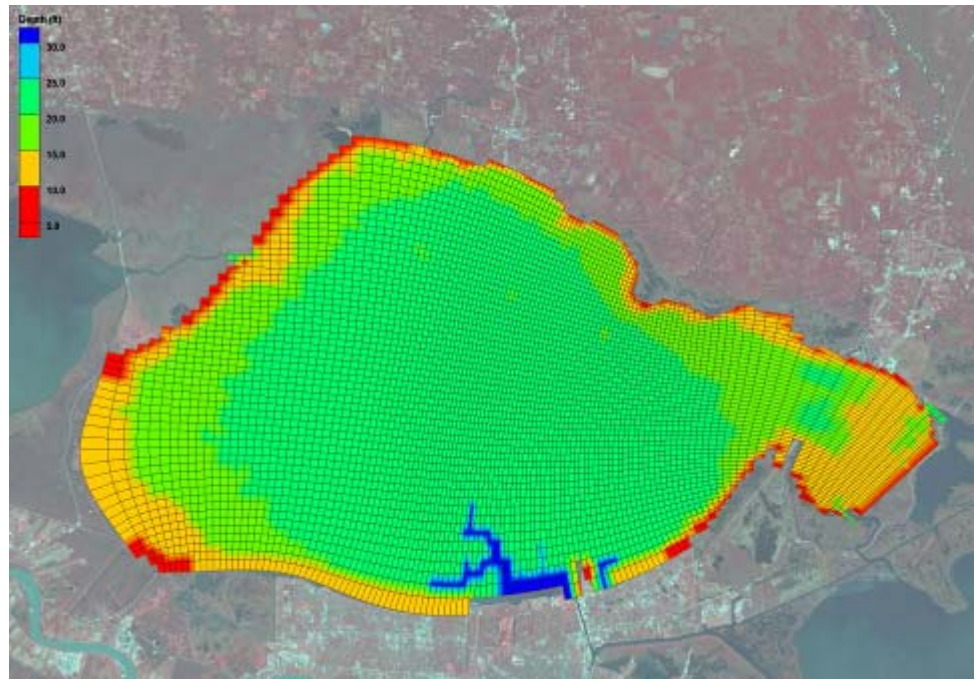
Race	Female	Male	Grand Total
African American	44.6%	62.1%	53.4%
Caucasian	51.0%	35.4%	43.2%
Hispanic	3.0%	1.6%	2.3%
Other	1.4%	0.8%	1.1%

Age	Percent
0 to 5	0.3%
6 to 10	0.1%
11 to 15	0.3%
16 to 20	0.7%
21 to 30	1.1%
31 to 40	3.0%
41 to 50	8.9%
51 to 60	13.9%
61 to 75	23.7%
>75	48.0%

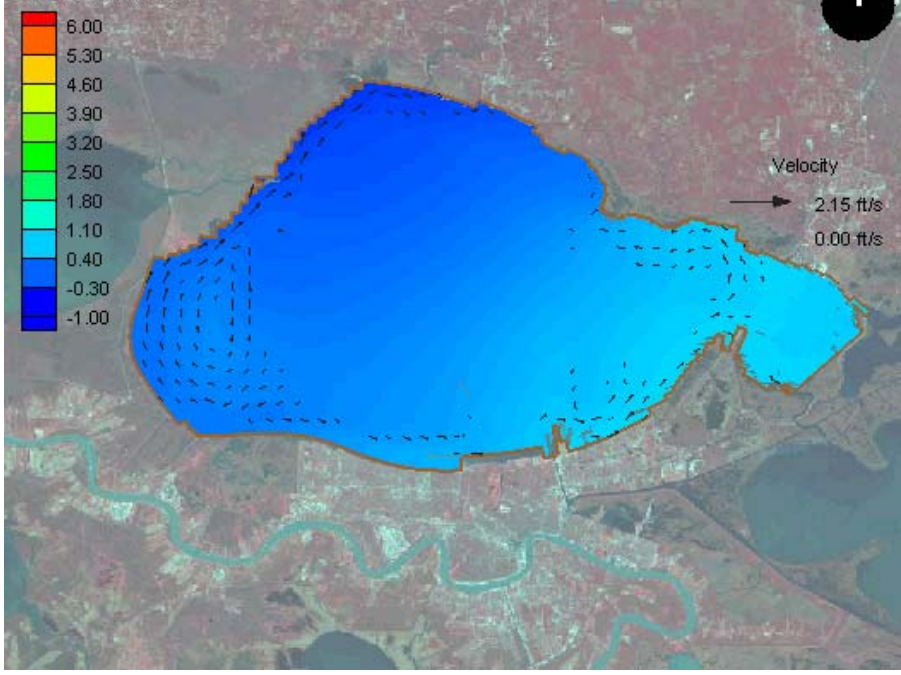
Environmental Consequences

- Direct, intermediate, and long-term ecological resource degradation stemming from events associated with Katrina
 - Inner ecosystem (inside flood protection)
 - Outer ecosystem

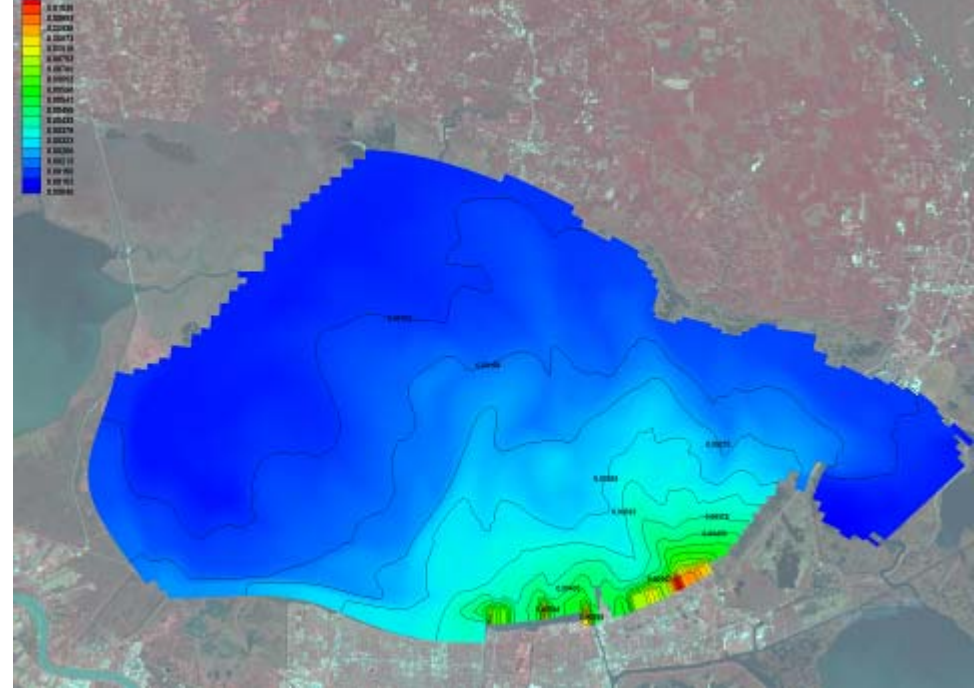
Orleans Parish Pump Stations



Mesh Module elevation



Mesh Module depth



Social, Cultural, and Historic

- Quantify key demographic parameters reflecting the vulnerable populations in neighborhoods prior to Katrina
 - age, gender, income, disabilities, ethnicity, etc.

Example Pre- and Post-Katrina Demographics by District

Geographic District in City of NO 2000 US Census Count	Gentilly*	Geographic District in City of NO Post Katrina Re-Occupation Estimate June 2006**	Gentilly*
Population	52,235	Population	1,500
White	20%	White	30%
African American	76%	African American	20%
Other	2%	Other	15%
Households		Households	
Family	13,659.00	Family	300.00
Non-Family	1,309.00	Non-Family	700.00
Over 5 Years Old	48,719	Over 5 Years Old	800
Percent in Same House in 1995	65.4%	Percent in Same House in 1995	20.0%
Over 25 Year Old	12,990	Over 25 Year Old	1,100
Highest Education, Over 25:		Highest Education, Over 25:	
Less than High School	22%	Less than High School	30%
High School	26%	High School	10%
College	24%	College	23%
Households Below Poverty	23%	Households Below Poverty	30%
Pre Katrina 2005 Estimate		Post Katrina Estimate Post June 2006	
Population	51,000	Population	
White	21%	White	**
African American	78%	African American	**
Other	2%	Other	**
Households		Households	
Family	13,000.00	Family	
Non-Family	1,000.00	Non-Family	
Over 5 Years Old	45,000	Over 5 Years Old	
Percent in Same House in 1995	70.9%	Percent in Same House in 1995	**
Over 25 Year Old	11,000	Over 25 Year Old	
Highest Education, Over 25:		Highest Education, Over 25:	**
Less than High School	24%	Less than High School	**
High School	27%	High School	**
College	26%	College	**
Households Below Poverty	23%	Households Below Poverty	**

Notes:*Includes Census Tracts:17.02, 17.03, 17.06, 24.01, 24.01, 25.02, 25.02, 25.04, 33.01, 33.02, 33.03, 3.04, 33.05, 33.06, 33.07, 33.08. **Scenario Based, at best. Some Observational Data