

DATE: 22 December 2005

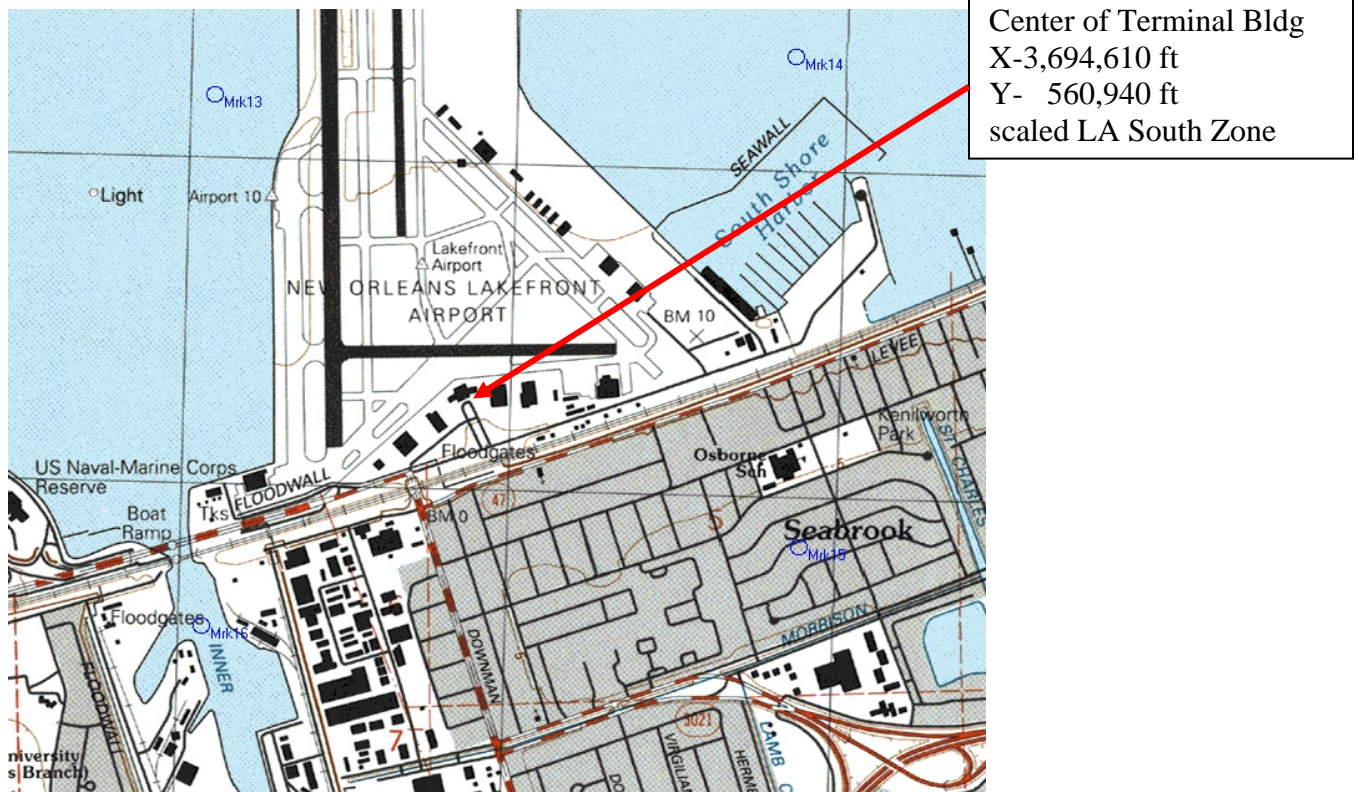
MEMORANDUM FOR: Mr. Steve Maynard (ERDC/CHL)

FROM: Bill Bergen (HQUSACE/IPET Team 6)

SUBJECT: ORLEANS LAKEFRONT AIRPORT SURGE & HIGH WATER MARK ELEVATIONS

The following sheets contain Lake Pontchartrain surge elevations during the morning of 29 Aug 05. These points were marked by Maynard and Bergen on 15 Dec 05, based on photographs taken by Orleans Levee Board personnel (Fred Pruitt) who rode out Hurricane Katrina in the airport terminal building.

Water surface elevation marks were surveyed by differential leveling on 16 Dec 05, by 3001, Inc. Points are referenced to CHL photo numbers and time (LST). Data on additional HWM points not referenced by CHL photo and time are in other CHL (Maynard) files. All elevations are referenced to the updated time dependent vertical datum for the New Orleans region—NAVD88 (2004.65). Approximate horizontal locations of the marks are as described.



APH-01  
TIME 7:38 AM (CHL Photo 1b)  
On concrete barrier at terminal entrance

ELEVATION 6.72 FT NAVD88 (2004.65)

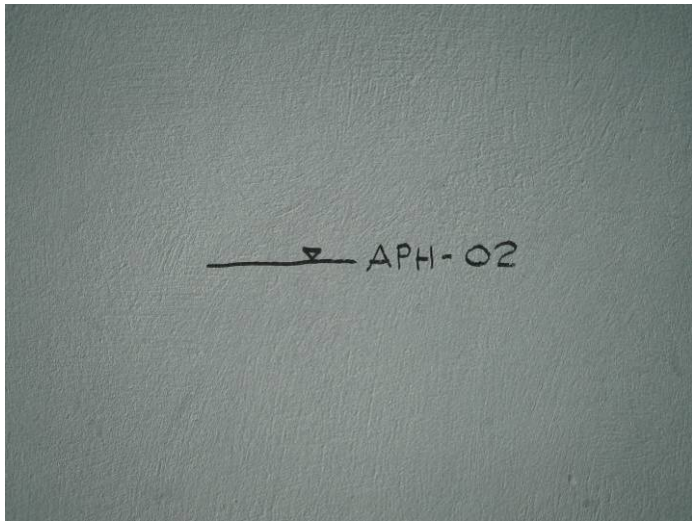


APH-01



APH-02  
TIME 10:31 AM (CHL Photo 1f)  
On wall NW side of terminal

ELEVATION 9.54 FT NAVD88 (2004.65)



APH-03  
TIME 9:42 AM (CHL Photo 1d)  
On column NE side of terminal building

ELEVATION 10.63 FT NAVD88 (2004.65)



APH-04  
TIME 9:40 AM (CHL Photo 1d)  
NE side of terminal bldg  
Mark 9.6 ft below bottom of balcony

ELEVATION 11.99 FT NAVD88 (2004.65)



APH-05

TIME ? (no CHL Photo )

NE side of terminal bldg  
marked by flagging on fence

ELEVATION 11.30 FT NAVD88 (2004.65)

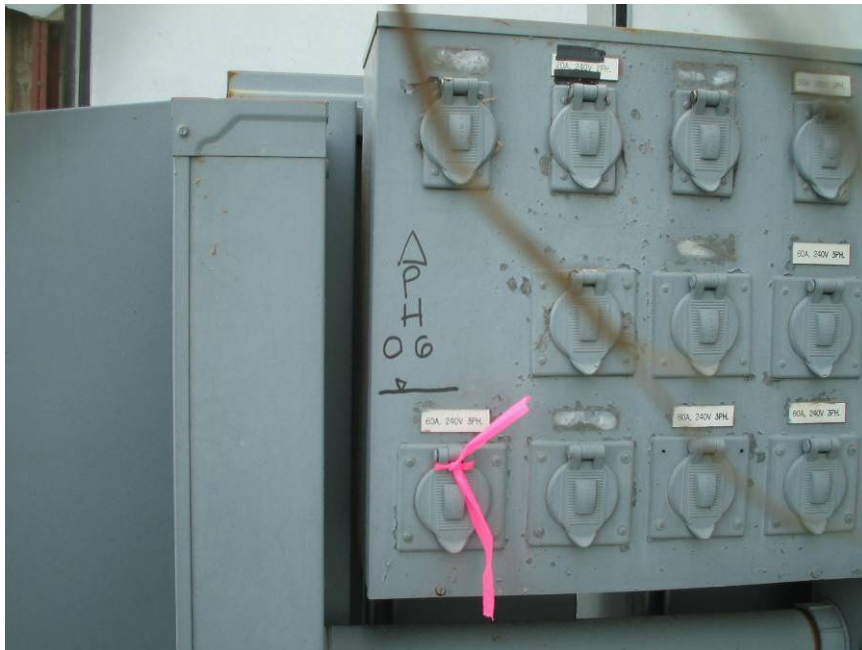


APH-06

TIME ? (no CHL Photo )

NE side of terminal bldg  
mark on elec switch box inside fence

ELEVATION 9.65 FT NAVD88 (2004.65)



APH-07

TIME – Post-Katrina HWM (CHL Photo 1a )

NW office inside terminal bldg

Debris line on wall inside Landry's office

ELEVATION 11.56 FT NAVD88 (2004.65)





APH-08

TIME – 11:05 AM (CHL Photo 1g)

Column inside terminal bldg

ELEVATION 10.20 FT NAVD88 (2004.65)



APH-09

TIME – 12:08 PM (CHL Photo 1h)

Column inside terminal bldg

ELEVATION 8.89 FT NAVD88 (2004.65)



APH-10

TIME - ? (no CHL Photo)

Inside terminal bldg—East side  
on elevator framework (Room 101)

ELEVATION 10.26 FT NAVD88 (2004.65)



APH-11  
TIME – ? (no CHL Photo)  
NW side of terminal bldg  
on bottom chord of channel

ELEVATION 7.35 FT NAVD88 (2004.65)

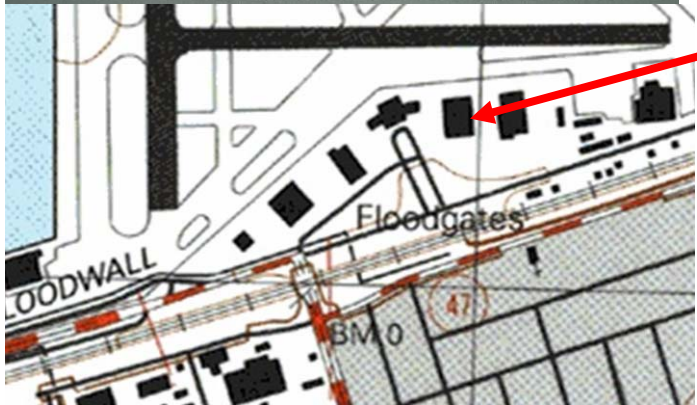


APH-12

TIME – ? (no CHL Photo)

NW corner of bldg 200 ft east  
of main terminal bldg  
below window frame

ELEVATION 7.06 FT NAVD88 (2004.65)



NW corner of building  
east of main terminal

APH-13  
TIME – 12:51 PM (CHL Photo 1i)  
NW corner of bldg 200 ft east  
of main terminal

ELEVATION 8.25 FT NAVD88 (2004.65)



APH-14

TIME - ? (no CHL Photo)

HWM on rail vicinity floodwall & floodgate

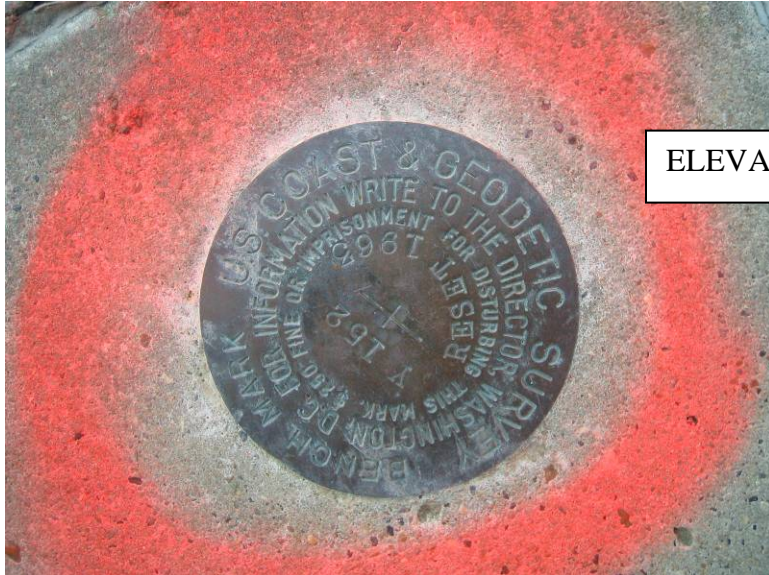
SSW of main terminal bldg

(ref CHL Lear Jet photo)

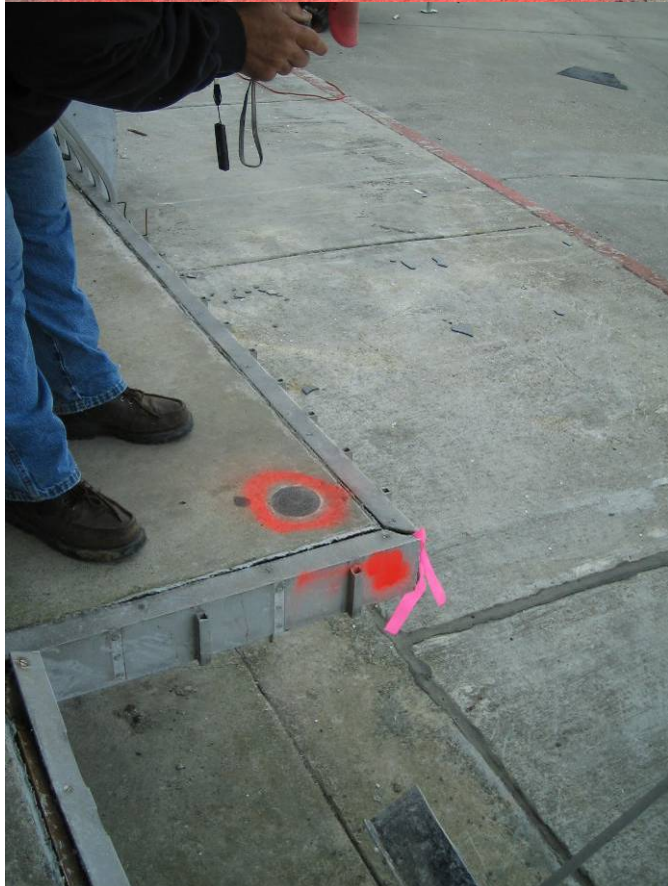
ELEVATION 7.04 FT NAVD88 (2004.65)



USC&GS BM Y 162 RESET (1963) [for reference elevation only—not a HWM point]  
located on loading platform on north side of main terminal bldg



ELEVATION 8.42 FT NAVD88 (2004.65)





Level Runs from TBM AP-01 [16 dec 05]

		Feet	
B	F	ELEVATION	
			0.817 AP 01
6.378			
	0.152		7.043 HWM APH 14
0.553			
	6.783		0.813 AP 01
			0.617
7.827			
	1.924		6.720 HWM APH 01
2.018			
	0.488		8.250 HWM APH 13
0.243			
	1.429		7.064 HWM APH 12
1.762			
SS	SS ELEV	4.036	4.790
4.864	9.654		HWM APH 06
1.646	11.300		HWM APH 05
0.978	10.632		HWM APH 03
2.334	11.988		HWM APH 04
		1.232	8.422 Y 152
5.139	13.561		
		3.300	10.261 HWM APH 10
		3.357	10.204 HWM APH 08
		4.670	8.891 HWM APH 09
		2.000	11.561 HWM APH 07
		7.656	5.905 TP
3.907	9.812		
		0.268	9.544 HWM APH 02
		2.462	7.350 HWM APH 11
		5.118	4.694 TP
5.036			
		4.942	4.788 TP
3.829			
		2.527	6.090 TP
2.254			
		7.501	0.843 AP 01
			-0.026 ERROR OF RUN