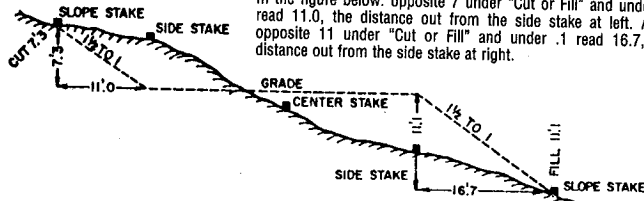


DISTANCES FROM SIDE STAKES FOR CROSS-SECTIONING

Roadway of any Width. Side Slopes 1½ to 1.

In the figure below: opposite 7 under "Cut or Fill" and under .3 read 11.0, the distance out from the side stake at left. Also, opposite 11 under "Cut or Fill" and under .1 read 16.7, the distance out from the side stake at right.



BK 2

#060851

Cut or Fill	Distance out from Side or Shoulder Stake										Cut or Fill
	0	.1	.2	.3	.4	.5	.6	.7	.8	.9	
0	0.0	0.2	0.3	0.5	0.6	0.8	0.9	1.1	1.2	1.4	0
1	1.5	1.7	1.8	2.0	2.1	2.3	2.4	2.6	2.7	2.9	1
2	3.0	3.2	3.3	3.5	3.6	3.8	3.9	4.1	4.2	4.4	2
3	4.5	4.7	4.8	5.0	5.1	5.3	5.4	5.6	5.7	5.9	3
4	6.0	6.2	6.3	6.5	6.6	6.8	6.9	7.1	7.2	7.4	4
5	7.5	7.7	7.8	8.0	8.1	8.3	8.4	8.6	8.7	8.9	5
6	9.0	9.2	9.3	9.5	9.6	9.8	9.9	10.1	10.2	10.4	6
7	10.5	10.7	10.8	11.0	11.1	11.3	11.4	11.6	11.7	11.9	7
8	12.0	12.2	12.3	12.5	12.6	12.8	12.9	13.1	13.2	13.4	8
9	13.5	13.7	13.8	14.0	14.1	14.3	14.4	14.6	14.7	14.9	9
10	15.0	15.2	15.3	15.5	15.6	15.8	15.9	16.1	16.2	16.4	10
11	16.5	16.7	16.8	17.0	17.1	17.3	17.4	17.6	17.7	17.9	11
12	18.0	18.2	18.3	18.5	18.6	18.8	18.9	19.1	19.2	19.4	12
13	19.5	19.7	19.8	20.0	20.1	20.3	20.4	20.6	20.7	20.9	13
14	21.0	21.2	21.3	21.5	21.6	21.8	21.9	22.1	22.2	22.4	14
15	22.5	22.7	22.8	23.0	23.1	23.3	23.4	23.6	23.7	23.9	15
16	24.0	24.2	24.3	24.5	24.6	24.8	24.9	25.1	25.2	25.4	16
17	25.5	25.7	25.8	26.0	26.1	26.3	26.4	26.6	26.7	26.9	17
18	27.0	27.2	27.3	27.5	27.6	27.8	27.9	28.1	28.2	28.4	18
19	28.5	28.7	28.8	29.0	29.1	29.3	29.4	29.6	29.7	29.9	19
20	30.0	30.2	30.3	30.5	30.6	30.8	30.9	31.1	31.2	31.4	20
21	31.5	31.7	31.8	32.0	32.1	32.3	32.4	32.6	32.7	32.9	21
22	33.0	33.2	33.3	33.5	33.6	33.8	33.9	34.1	34.2	34.4	22
23	34.5	34.7	34.8	35.0	35.1	35.3	35.4	35.6	35.7	35.9	23
24	36.0	36.2	36.3	36.5	36.6	36.8	36.9	37.1	37.2	37.4	24
25	37.5	37.7	37.8	38.0	38.1	38.3	38.4	38.6	38.7	38.9	25
26	39.0	39.2	39.3	39.5	39.6	39.8	39.9	40.1	40.2	40.4	26
27	40.5	40.7	40.8	41.0	41.1	41.3	41.4	41.6	41.7	41.9	27
28	42.0	42.2	42.3	42.5	42.6	42.8	42.9	43.1	43.2	43.4	28
29	43.5	43.7	43.8	44.0	44.1	44.3	44.4	44.6	44.7	44.9	29
30	45.0	45.2	45.3	45.5	45.6	45.8	45.9	46.1	46.2	46.4	30
31	46.5	46.7	46.8	47.0	47.1	47.3	47.4	47.6	47.7	47.9	31
32	48.0	48.2	48.3	48.5	48.6	48.8	48.9	49.1	49.2	49.4	32
33	49.5	49.7	49.8	50.0	50.1	50.3	50.4	50.6	50.7	50.9	33
34	51.0	51.2	51.3	51.5	51.6	51.8	51.9	52.1	52.2	52.4	34
35	52.5	52.7	52.8	53.0	53.1	53.3	53.4	53.6	53.7	53.9	35
36	54.0	54.2	54.3	54.5	54.6	54.8	54.9	55.1	55.2	55.4	36
37	55.5	55.7	55.8	56.0	56.1	56.3	56.4	56.6	56.7	56.9	37
38	57.0	57.2	57.3	57.5	57.6	57.8	57.9	58.1	58.2	58.4	38
39	58.5	58.7	58.8	59.0	59.1	59.3	59.4	59.6	59.7	59.9	39
40	60.0	60.2	60.3	60.5	60.6	60.8	60.9	61.1	61.2	61.4	40

This paper has been treated to allow usage in "Wet" environments.

INDEX

Page	Contents
12-14-05 1	Title Page
2	HWM Peoples 6422
3	HWM 5544 ST Ferdinand
4	HWM 5438 ST Ferdinand
5-7	HWM OP17 - corner Peoples & Edge
8-9	HWM OP17 - 3930 Florida Ave
10	OP17 FF Elev
11-14	HWM Essex Orleans S - Low Cord Orleans Canal
15 15	OP7 FF Elev
12-15-05 16-17	OP1 FF & Sideshots
18	OP2 FF & Sideshots
19-20	Blount - OP3 FF, Sideshots Low chords London 1 RR Bridge, HWM RR GATE
21	Blount - TBMA
22	TBMA - London 4 Low chord
23	VOID
24-25	LC-05 Set TBMB
26	OP4 FF & Side shots
27	OP7 Low chord RR Bridge
12-16-05 28	Montice 110 PS FF & Sideshots
29	Mont Set TBMC
30-31	TBMC Pritchard PS FF & Sideshots, TBMD
32	AP-01 HWM APH 14

I

High
Title Page

PC. Ritchie Bullock

T Mark Penn

Ø Micheal Everett

Ø Jason Kiker

Inst. Sn# 330980 Leica DDA03

Peg tested = 12-14-05 Results = (-0.004.) →

Rad's Crain # 920203

#1

#2

{Note = no adjustments made at this time.}

High Water Marks

STA +	H.I. -	Elev. -
6422 5.049		6.043 100.00

Hwm.	1.332	2.128 2.132	-3.122
------	-------	---------------------------	--------

		4.254	-6.044
--	--	-------	--------

Tie

Level Check

STA +	H.I. -	Elev. -
-------	--------	---------

Rod A.	4.863	104.863	100.00
--------	-------	---------	--------

Rod B.	4.884	105.995	3.752 101.111
--------	-------	---------	------------------

Rod A.		5.999	99.996
--------	--	-------	--------

Error = 0.004

Tie

R. Bullock
M. Penn
M. Everett

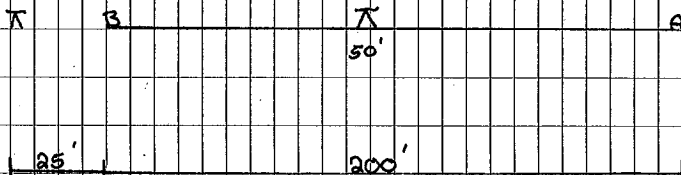
12-14-05

(2)

Jason Kiker

GPS Elev.

6422 Pulpes



High Water Mark

STA	+	HI	-	Elev.
	5.751	-1.300		-7.051
TBM 5544	4.915	10.5751		100.00
HWM.	(-4.210)		3.490 +	+2.190
FP		-2.020	3.519	
TBM 5544			5.028	-7.048 F
HWM.				-7.051 G
				10.003 E

Tie

RB
MP
ME
JK

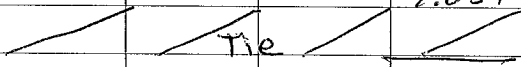
12-14-05

Description:

Red Inverted 5544 St. Francis Wind

High water mark

STA	+	HI	-	Elev.
TBM 5544				-7.051
	5.488			
TP	5.425		5.876	
HWM	4.204		3.890	-5.909
TP	5.952		5.639	
TBM 5544			5.668	-7.055 F
				-7.057
				-0.004 E



R.B
M.P
M.E
J.K

12-14-05

Description:

Address: 5438 St Ferdinand

R.B.
M.P.
M.E.
J.K.

12-14-05

2

High Water Mark cont.

Sta	+	HI	-	Elev.
				-5.666
	4.248	-1.418		
I.P.			4.230	-5.648
	4.960	-0.688		
I.P.			3.077	-3.765
	4.155	2.390		
I.P.			4.064	-1.674
	4.754	3.080		
IBM OP17			5.202	-2.122 F
				-2.146 G
				-0.024 E

~~~~~ Tie ~~~~~

Description:

Evd. Snail = OP-17



R.B  
M.P  
M.E  
J.K

9.

12-14-05

| STA      | +     | HWM   | Cont. | Elev.    |
|----------|-------|-------|-------|----------|
| TP       |       |       |       | -1.783   |
|          | 7.369 | 5.586 |       |          |
| TP       |       |       | 3.271 | 2.315    |
|          | 3.865 | 6.180 |       |          |
| TP       |       |       | 3.444 | 2.736    |
|          | 2.562 | 5.298 |       |          |
| IBM 0P17 |       |       | 7.429 | -2.131 F |
|          |       |       |       | -2.146 G |
|          |       |       |       | -0.015 E |
| ~ Tie ~  |       |       |       |          |

Description:

End 8' nail = CP-17



| Sta           | +     | High Water mark | -     | Elev. |
|---------------|-------|-----------------|-------|-------|
| ESSEX<br>FBMT |       |                 |       | 5.850 |
|               | 4.908 | 10.758          |       |       |
| TP            |       |                 | 4.371 | 6.387 |
|               | 4.314 | 10.701          |       |       |
| TP            |       |                 | 2.212 | 8.489 |
|               | 2.386 | 10.875          |       |       |
| TP            |       |                 | 4.704 | 6.171 |
|               | 4.413 | 10.584          |       |       |
| TP            |       |                 | 3.712 | 6.872 |
|               | 3.976 | 10.848          |       |       |
| T.P           |       |                 | 4.032 | 6.816 |

R.B  
M.P  
M.E  
M.K

12-14-05

11

Descriptions:

Fold Brass cap set in cone. Stamped ESSEX  
1931.

| STA                              | +         | HI     | -     | Elev.  |
|----------------------------------|-----------|--------|-------|--------|
| TP                               |           |        |       | 6.816  |
|                                  | 4.726     | 11.542 |       |        |
| T.P                              |           |        | 5.218 | 5.924  |
|                                  | 3.881     | 9.805  |       |        |
| TP                               |           |        | 3.102 | 6.703  |
|                                  | 5.189     | 11.892 |       |        |
| TP                               |           |        | 2.769 | 9.123  |
|                                  | 5.225     | 14.348 |       |        |
| TBM<br><del>TBM</del>            | Orleans 5 |        | 5.087 | 9.261  |
|                                  | 4.372     | 13.633 |       |        |
| Low Corp<br><del>Side Shot</del> |           |        | 6.542 | 7.091  |
|                                  | 6.595     | 13.686 |       |        |
| TP                               |           |        | 2.928 | 10.758 |

R.B  
M.P  
M.E  
J.K

19

12-14-05

Description:

Find Brass cap no stamping (Orleans - S) - on top  
side with S.E. corner of bridge on Lakefront  
Dene over Orleans Canal

see above - Low Corp - South side  
Bridge - Lakeshore Dene @ Orleans Canal.





RB  
330  
512  
K

12-14-05

| SEA                 | +     | HI     | -     | Elev.                          |
|---------------------|-------|--------|-------|--------------------------------|
|                     |       |        |       | 9.300                          |
|                     | 2.791 | 10.091 |       |                                |
| I.P                 |       |        | 0.745 | 9.346                          |
|                     | 4.164 | 13.510 |       |                                |
| J.P                 |       |        | 6.423 | 7.087                          |
|                     | 3.602 | 10.689 |       |                                |
| FBM<br>ESSEX<br>FBM |       |        | 4.840 | 5.849 F<br>5.850 G<br>-0.001 E |

Description:

Fad Brass cap Stamped ESSEX 1931

| STA       | +     | HI    | -     | Elev.                                                             |
|-----------|-------|-------|-------|-------------------------------------------------------------------|
| TBM @ P07 |       |       |       | 0.292                                                             |
|           | 5.618 | 5.910 |       |                                                                   |
| FF        |       |       | 3.883 | <span style="border: 1px solid black; padding: 2px;">2.027</span> |
|           | 4.442 | 6.469 |       |                                                                   |
| TBM @ P07 |       |       | 6.171 | 0.298 F                                                           |
|           |       |       |       | 0.292 G                                                           |
|           |       |       |       | +0.006 E                                                          |
| Tie       |       |       |       |                                                                   |

R  
3  
5  
5  
K

12-14-05

| Description:                         |
|--------------------------------------|
| OP 07                                |
| Orleans Pump Sta #7 - Finished Floor |
| OP 07                                |

| STA  | +     | HI    | -     | Elev.    |
|------|-------|-------|-------|----------|
| TBM. | OPφ1  |       |       | -1.949   |
|      | 7.938 | 5.989 |       |          |
| FF   |       |       | 4.343 | 1.646    |
|      | 4.676 | 6.322 |       |          |
| TBM. |       |       | 8.268 | -1.946 F |
|      |       |       |       | -1.949 G |
|      |       |       |       | -0.003 E |
| Tie  |       |       |       |          |
| TBM. |       |       |       | -1.949   |
|      | 7.853 | 5.904 |       |          |
| (1)  |       |       | 4.654 | 1.250    |
| (2)  |       |       | 4.734 | 1.170    |
| (3)  |       |       | 4.719 | 1.185    |
| TP   |       |       | 4.763 | 1.141    |

RB  
MP  
ME  
JK

12-15-05

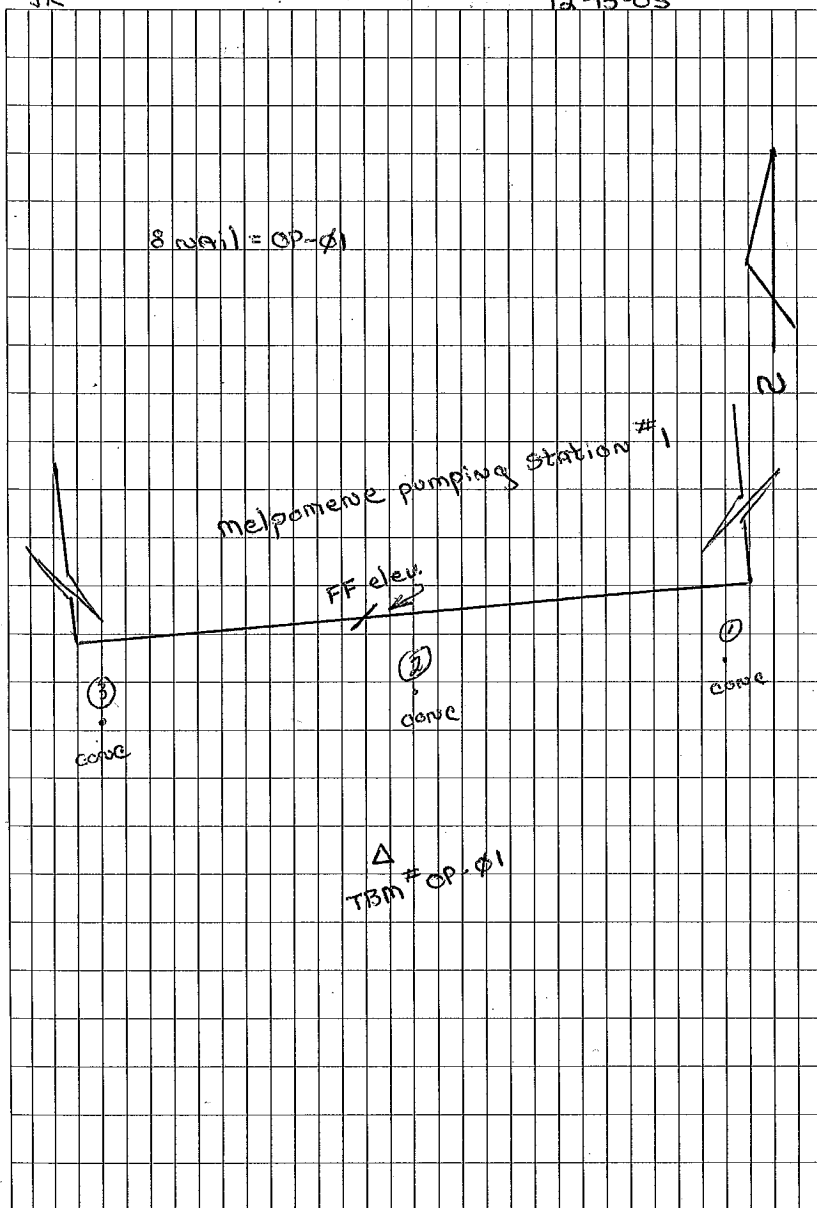
16

| Description:                               |
|--------------------------------------------|
| 8 nail = OP-φ1                             |
| Pump Sta Orleans Parish #1 - First Floor   |
| 8 nail = OP-φ1                             |
| OPφ1                                       |
| conc. in parking lot - see sketch next pg. |

| Finished Floor Elev. |       |       |          |
|----------------------|-------|-------|----------|
| STA                  | +     | HI    | - Elev.  |
|                      |       |       | 1.141    |
|                      | 5.042 | 6.183 |          |
| TBM                  |       | 8.131 | -1.948 F |
|                      |       |       | -1.949 G |
|                      |       |       | -0.001 E |
| Tie                  |       |       |          |

RB  
ME  
MP  
JK

12-15-05 17

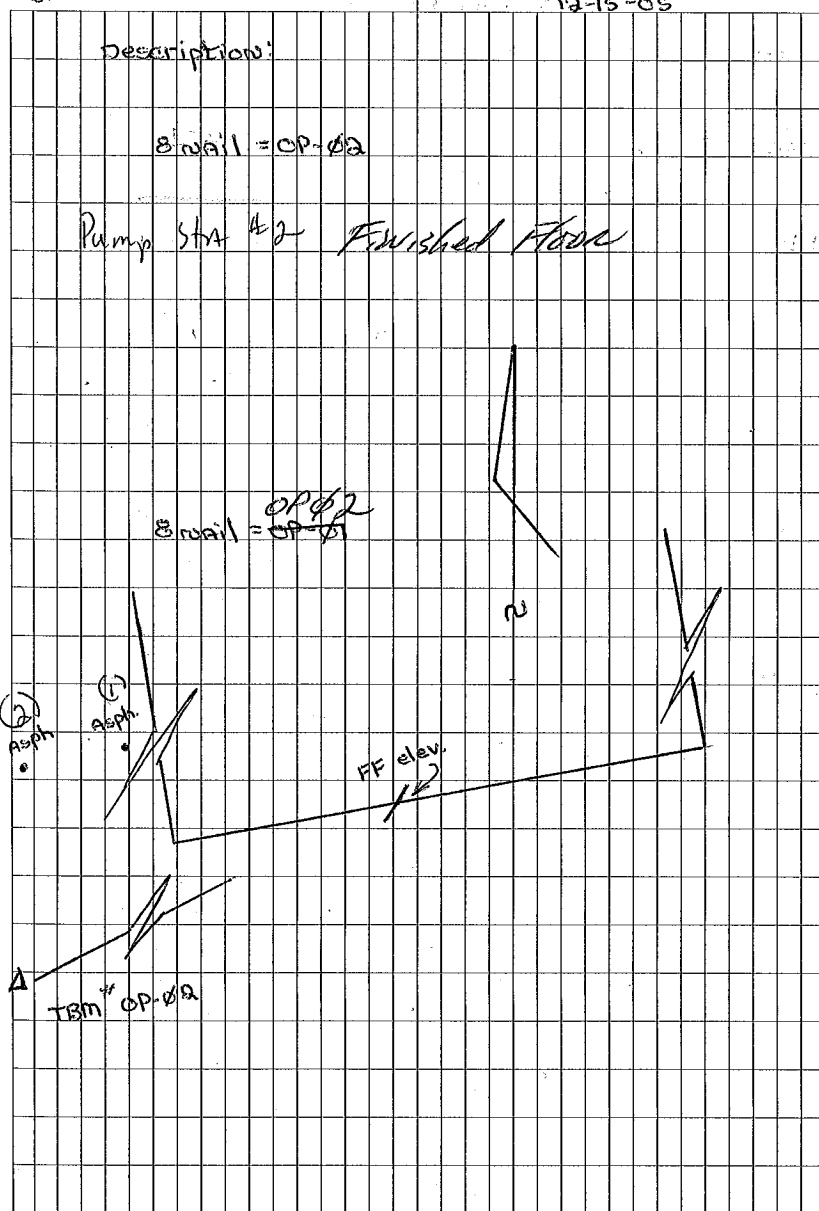


| STA        | +     | HI    | -     | Elev.    |
|------------|-------|-------|-------|----------|
| IBM. OP-02 |       | 424   |       | -2.405   |
|            | 5.829 | 3.784 |       |          |
| FF         |       |       | 1.381 | 2.043    |
| ①          |       |       | 3.386 | 0.038    |
| ②          |       | 524   |       | -0.140   |
|            | 4.024 | 3.884 | 3.924 |          |
| IBM        |       |       | 5.930 | -2.406 F |
|            |       |       |       | -2.405 G |
|            |       |       |       | +0.001 E |
| Tie        |       |       |       |          |

RB  
MD  
ME  
JK

12-15-05

18



| HWM and Low Crd. Levels |       |        |       |          |
|-------------------------|-------|--------|-------|----------|
| STA                     | +     | H1     | -     | Elev.    |
| TBM. Blount =<br>Blou   |       |        |       | -1.352   |
|                         | 5.971 | 4.619  |       |          |
| FF                      |       |        | 3.389 | 1.230    |
| Conc. (1)               |       |        | 1.458 | 3.161    |
| " (2)                   |       |        | 1.486 | 3.133    |
| " (3)                   |       |        | 1.449 | 3.170    |
|                         | 1.609 | 4.779  |       |          |
| TBM.                    |       |        | 6.132 | -1.353 F |
|                         |       |        |       | -1.352 G |
|                         |       |        |       | 40.001 E |
| Tie                     |       |        |       |          |
| TBM.                    |       |        |       | -1.352   |
|                         | 3.082 | 1.730  |       |          |
| TP                      |       |        | 7.506 | -5.776   |
|                         | 9.922 | 4.146  |       |          |
| TP                      |       |        | 0.097 | 4.049    |
|                         | 9.515 | 13.564 |       |          |
| Low Crd.                |       |        | 7.793 | 5.771    |
| HWM.                    |       |        | 3.523 | 10.081   |
| Low Crd.                | 0.749 |        | 0.749 |          |
| Low Crd.                | 1.664 |        |       |          |
| T.P.                    |       |        | 9.652 | 3.912    |

RB  
MP  
ME  
JK

19

Low 12-15-05

Description:

Find Brass cap set flush in conc stamped -  
(Blount 1972.)

Finished Floor

Pumping Station # 3

(3) conc. (2) conc. (1) conc.

Find Brass cap set flush in conc stamped -  
(Blount 1972.)

Blount

London - 1 RXR Bridge  
High Water Mark - R/R gate  
London - 3 I 610 } Not Needed  
London - 3A }





| STA                  | +     | HI     | -     | Elev.    |
|----------------------|-------|--------|-------|----------|
| TBM - Blount<br>Blow |       |        |       | -1.352   |
|                      | 2.948 | 1.596  |       |          |
| I.P.                 |       |        | 8.267 | -7.271   |
|                      | 7.090 | -0.181 |       |          |
| IP                   |       |        | 9.074 | -0.255   |
|                      | 3.926 | 3.671  |       |          |
| I.P.                 |       |        | 4.903 | -1.232   |
| +                    | 5.347 | 4.115  |       |          |
| I.P.                 |       |        | 4.305 | -0.190   |
|                      | 6.321 | 6.131  |       |          |
| TBM-A                |       |        | 5.524 | 0.607    |
|                      | 5.823 | 6.430  |       |          |
| I.P.                 |       |        | 6.618 | -0.188   |
|                      | 4.288 | 4.100  |       |          |
| I.P.                 |       |        | 5.343 | -1.243   |
|                      | 4.823 | 3.580  |       |          |
| I.P.                 |       |        | 3.779 | -0.199   |
|                      | 0.977 | 0.778  |       |          |
| I.P.                 |       |        | 8.040 | -7.262   |
|                      | 9.129 | 1.867  |       |          |
| TBM - Blount = Blow  |       |        | 3.211 | -1.344 F |
|                      |       |        |       | -1.352 G |
|                      |       |        |       | -0.008 E |

RB  
370  
SK

12-15-05

21

Description:

End Brass cap set Flush with conc.  
stamped (Blount 1971)

5/8 set Iron Rod - Hwy 90 & <sup>Copson Canal</sup> 17<sup>th</sup> St.

End Brass cap set Flush with conc.  
stamped (Blount 1971)

| STA      | +      | HI     | -      | Elev.        |
|----------|--------|--------|--------|--------------|
| TBM-A.   |        |        |        | 0.607        |
|          | 5.665  | 6.272  |        |              |
| T.P      |        |        | 0.350  | 5.922        |
|          | 8.229  | 14.151 |        |              |
| low cor. |        |        | 12.056 | <u>2.095</u> |
|          | 12.124 | 14.219 |        |              |
| T.P      |        |        | 8.336  | 5.883        |
|          | 0.317  | 6.200  |        |              |
| TBM-A.   |        |        | 5.594  | 0.606 F      |
|          |        |        |        | 0.607 G      |
|          |        | Tie    |        | -0.001 E     |

RB  
MP  
ME  
JK

22

12-15-05

Description:

5/8 Set Iron Rod, - see this BK. pg 21.

London-4 - Condon Canal & Hwy 90

5/8 Set Iron Rod.

| STA      | +      | HI     | -      | Elev.    |
|----------|--------|--------|--------|----------|
| TBM      | LC65   |        |        | -1.220   |
|          | 10.164 | 8.944  |        |          |
| I.P.     |        |        | 2.800  | 6.744    |
|          | 7.083  | 13.827 |        |          |
| Low Crd. |        |        | 11.458 | 2.369    |
| TP.      |        |        | 6.536  | 7.291    |
|          | 6.614  | 13.905 |        |          |
| I.P.     |        |        | 7.468  | 6.437    |
|          | 1.719  | 8.156  |        |          |
| TBM.     |        |        | 9.377  | -1.221 F |
|          |        |        |        | -1.220 S |
| Tve      |        |        |        | +0.001 E |

RB  
MP  
ME  
JK

12-15-05

23

Descriptions:

100'-5 1/2 Fwd Iron Rod.

Lowdown #5 Bridge Low crd. - London  
Canal @ Middlebean Ave.

100'-5 1/2 Fwd Iron Rod.



| Sta      | +     | HI     | -      | Elev.    |
|----------|-------|--------|--------|----------|
|          |       |        |        | 3.834    |
|          | 7.337 | 11.171 |        |          |
| T.P      |       |        | 2.649  | 8.522    |
|          | 0.342 | 8.864  |        |          |
| TBM CC05 |       |        | 10.108 | -1.244 F |
|          |       |        |        | -1.270 G |
|          |       | Tie    |        |          |
|          |       |        |        | +0.024 E |

RB  
MP  
JK

RB  
MP  
JK

12-15-05 25

Description:

CC05

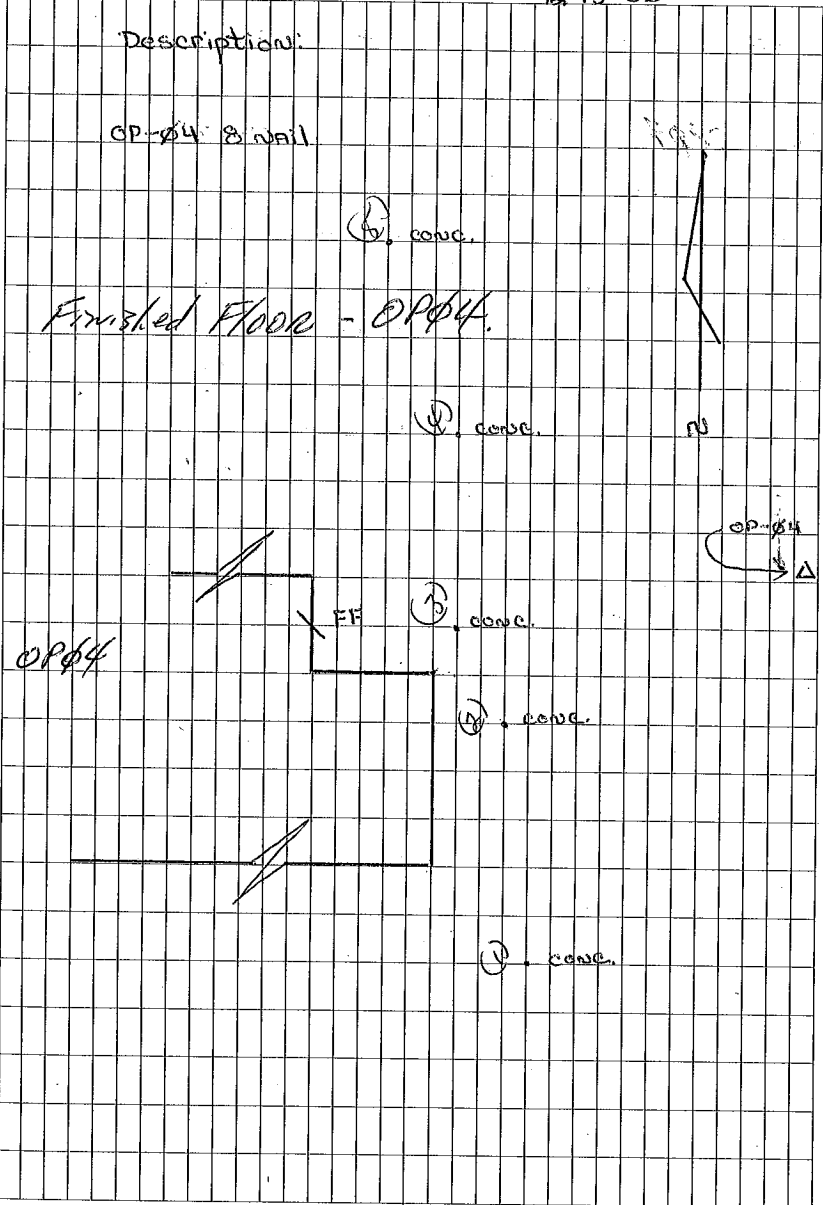
| STA       | +     | HI    | -     | Elev.        |
|-----------|-------|-------|-------|--------------|
| TBM. OPφ4 |       |       |       | -5.285       |
|           | 7.289 | 2.00φ |       |              |
| T.P       |       |       | 3.888 | -1.88φ       |
|           | 8.264 | 6.380 |       |              |
| FF        |       |       | 3.849 | <u>2.531</u> |
| conc. (1) |       |       | 4.616 | 1.764        |
| conc. (2) |       |       | 4.607 | 1.773        |
| conc. (3) |       |       | 4.742 | 1.638        |
| conc. (4) |       |       | 8.807 | -2.427       |
| conc. (5) |       |       | 8.907 | -2.527       |
| T.B.M.    | 4.667 | 2.140 | 4.667 |              |
|           |       |       | 7.426 | -5.286 F     |
|           |       |       |       | -5.285 G     |
|           |       |       |       | +0.001 E     |

Tie

44  
92  
94  
42

RB  
MP  
ME  
JK

12-15-05 26





| Levels @ Monticello pumping station. |       |        |        |                                                                   |
|--------------------------------------|-------|--------|--------|-------------------------------------------------------------------|
| Sta                                  | +     | HI     | -      | Elev.                                                             |
| TBM. <i>mont</i>                     |       |        |        | -5.354                                                            |
|                                      | 8.574 | 3.220  |        |                                                                   |
| FF                                   |       |        | 0.572  | <span style="border: 1px solid black; padding: 2px;">2.648</span> |
|                                      | 0.523 | 3.171  |        |                                                                   |
| mont-1                               |       |        | 7.691  | -4.52                                                             |
| mont-2                               |       |        | 8.238  | -5.067                                                            |
|                                      | 4.460 | -0.607 |        |                                                                   |
| T.P                                  |       |        | 3.234  | -3.841                                                            |
|                                      | 7.283 | 3.442  |        |                                                                   |
| mont-3                               |       |        | 19.882 | -16.440                                                           |
| T.P                                  |       |        | 5.325  | -1.883                                                            |
|                                      | 5.721 | 3.838  |        |                                                                   |
| mont-4                               |       |        | 19.084 | -15.246                                                           |
| TBM                                  |       |        | 9.194  | -5.356 F                                                          |
|                                      |       |        |        | -5.354 G                                                          |
|                                      |       | -Tie   |        | +0.002 E                                                          |

R.B  
M.P  
M.E  
J.K

28

12-16-05

Description:

Encl Enval = Mont.

Finished Floor - Monticello Pump STA.

conc

conc.

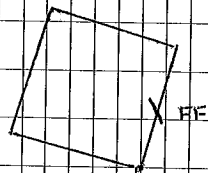
Inv on A 12x25.3 conc. Box Culvert.

mont-4

Inv on A 11x20 conc Box Culvert

mont

mont-3



mont-2

TBM  $\Delta$  mont.

2 R/C  
Trenches  
on  
TOP



| STA       | +     | Levels Cont... |       | Elev.    |
|-----------|-------|----------------|-------|----------|
|           |       | HI             | -     |          |
| TBM. Mont |       |                |       | -5.354   |
|           | 4.227 | -1.127         |       |          |
| T.P.      |       |                | 5.069 | -6.196   |
|           | 6.668 | 0.472          |       |          |
| T.P.      |       |                | 4.272 | -3.800   |
|           | 5.058 | 1.258          |       |          |
| TBM-C     |       |                | 3.587 | -2.329   |
|           | 3.802 | 1.473          |       |          |
| I.P.      |       |                | 5.288 | -3.815   |
|           | 4.324 | 0.509          |       |          |
| I.P.      |       |                | 6.701 | -6.192   |
|           | 5.429 | -0.763         |       |          |
| TBM. Mont |       |                | 4.590 | -5.353 F |
|           |       |                |       | -5.354 G |
|           |       | Tie            |       | -0.001 E |

RB  
MP  
ME  
JK

12-16-05

29

Descriptions:

Fed. 8 nail = Mont.

chiseled square

Mont

| STA    | Levels           |       | cont.            |        |
|--------|------------------|-------|------------------|--------|
|        | +                | HI    | -                | Elev.  |
| TBM-C  |                  |       |                  | -2.329 |
|        | 5.568            | 3.239 |                  |        |
| FF     |                  |       | 0.010            | 3.229  |
| (1)    |                  |       | 5.116            | -1.877 |
| (2)    |                  |       | 4.803            | -1.564 |
| T.P.   | 4.253            | 2.689 | <del>4.253</del> |        |
|        | <del>4.604</del> |       | 4.004            | -1.315 |
| T.P.   | 4.169            | 2.854 | <del>4.169</del> |        |
| T.P.   | <del>4.384</del> |       | 4.384            | -1.530 |
| T.P.   | 4.453            | 2.923 | <del>4.453</del> |        |
| T.P.   | <del>4.995</del> |       | 4.995            | -2.072 |
| T.P.   | 4.357            | 2.285 | <del>4.357</del> |        |
| T.P.   | <del>4.401</del> |       | 4.401            | -2.116 |
| T.P.   | 5.066            | 2.950 | <del>5.066</del> |        |
|        | <del>5.158</del> |       | 5.158            | -2.208 |
| T.BM-D | 5.272            | 3.064 | <del>5.272</del> |        |
|        | <del>5.071</del> |       | 5.071            | -2.007 |
| T.P.   | 4.109            | 2.102 | <del>4.109</del> |        |
|        | <del>4.301</del> |       | 4.301            | -2.199 |
|        | 5.238            | 3.039 | <del>5.238</del> |        |
|        | <del>4.863</del> |       | 4.863            | -1.824 |
|        | 5.258            | 3.434 | <del>5.258</del> |        |
| T.P.   |                  |       | 5.587            | -2.153 |

RB  
MP  
ME  
JK

30

12-16-05

| Description:                              |                            |
|-------------------------------------------|----------------------------|
| chiseled square - see this BK. pg 29      |                            |
| Pritchard's Pump Station - Finished Floor |                            |
| conc                                      | > Pritchard's Pump Station |
| conc                                      |                            |
| Set Nail.                                 |                            |



Levels Cont...

| STA  | +     | HI    | -     | Elev.    |
|------|-------|-------|-------|----------|
| TBM  |       |       |       | 0.817    |
|      | 6.378 | 7.195 |       |          |
| HWM  |       |       | 0.152 | 7.043    |
| HBM  | 0.553 | 7.596 |       |          |
| TBM. |       |       | 6.783 | 0.813 F  |
|      |       |       |       | 0.817 G  |
|      |       |       |       | -0.004 E |

Tie

RB  
MP  
ME  
JK

12-16-05

Descriptions:

AP01

APH-14.

AP01

RB  
MP  
ME  
JK

12-16-05

| STA       | +     | HI                          | -     | Elev.                                 |
|-----------|-------|-----------------------------|-------|---------------------------------------|
| TRM. AP#1 |       |                             |       | 0.817 Feet<br><del>0.249 meters</del> |
|           | 7.827 | <del>8.076</del>            |       | 6.720<br><del>6.752</del>             |
| HWM.      |       |                             | 1.924 |                                       |
|           | 2.018 | <del>8.170</del>            |       | 8.250<br><del>7.682</del>             |
| HWM.      |       |                             | 0.488 |                                       |
|           | 0.243 | <del>7.925</del>            |       | 7.064<br><del>6.496</del>             |
| HWM.      |       |                             | 1.429 |                                       |
|           | 1.762 | <del>8.258</del>            |       | 4.79<br><del>4.222</del>              |
| TP        |       |                             | 4.036 |                                       |
|           | 4.864 | <del>9.65</del><br>9.086    |       | 9.654                                 |
| HWM.      |       |                             |       | 6.436                                 |
| HWM.      |       |                             |       | 5.768                                 |
| HWM.      |       |                             |       | 7.124                                 |
| TP.       |       |                             | 1.232 | 8.422<br><del>7.854</del>             |
|           | 5.139 | 13.561<br><del>12.993</del> |       |                                       |
| HWM.      |       |                             | 3.300 | 10.261                                |
| HWM       |       |                             | 3.357 | 10.204                                |
| HWM       |       |                             | 4.670 | 8.891                                 |
| HWM.      |       |                             | 2.000 | 11.561                                |
| TP.       |       |                             | 7.656 | 5.905<br><del>5.337</del>             |
|           | 3.907 | <del>9.249</del>            |       |                                       |
| HWM.      |       |                             | 0.268 | 9.544                                 |

| Description:                                  |
|-----------------------------------------------|
| Feet = 0.817 AP#1                             |
| APH-01 6.720'                                 |
| APH-13 8.250'                                 |
| APH-12 7.064                                  |
| 4.790                                         |
| APH-06 = H.I.                                 |
| Red Inverted on APH-06 <sup>5</sup>           |
| APH-03                                        |
| APH-04                                        |
| 8.422 Fwd Brass Cap Stamped (Y152 Reset 1963) |
| APH-10                                        |
| APH-8                                         |
| APH-9                                         |
| APH-07                                        |
| 5.905                                         |
| APH-02                                        |

RB  
MP  
ME  
JK

12-16-05

| Sta  | +     | Levels           | -   | Cont. | Elev.            |
|------|-------|------------------|-----|-------|------------------|
|      |       |                  |     | 2.462 | 7.350            |
| TP.  |       |                  |     | 5.118 | 4.694            |
|      | 5.036 | <del>9.162</del> |     |       | <del>4.102</del> |
| TP.  |       |                  |     | 4.942 | 4.788            |
|      | 3.829 | <del>8.049</del> |     |       | <del>4.220</del> |
| T.P. |       |                  |     | 2.527 | 6.090            |
|      | 2.254 |                  |     |       | <del>5.502</del> |
| TBM. |       |                  |     | 7.501 | 0.843            |
|      | /     | /                | Tie | /     | /                |

| Description              |
|--------------------------|
| APH-11                   |
| 4.694                    |
| 4.788                    |
| 6.090                    |
| 0.843 <sup>FO</sup> ardi |
| 0.8176                   |
| 0.026 <del>error</del>   |

| Sta | + | HI | - | Elev. |
|-----|---|----|---|-------|
|-----|---|----|---|-------|

TBM

4.714

TP

3.174

5.218

TP

7.103

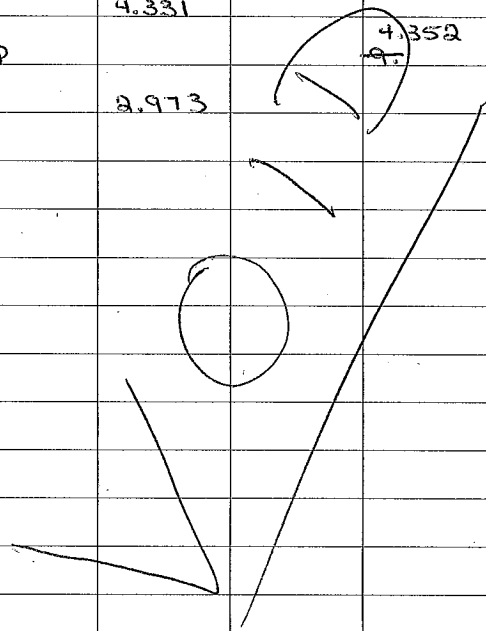
4.331

TP

4.352

2.973

95



Fuel & mail = 0.012

| STA         | +                | Levels            | Cont... | - | Elev.             |
|-------------|------------------|-------------------|---------|---|-------------------|
| IBM. OP12   |                  |                   |         |   | 0.445'            |
|             | 5.224            | 5.669             |         |   |                   |
| T.P         |                  |                   | 3.347   |   | 2.322             |
|             | 4.868            | 7.190             |         |   |                   |
| T.P         |                  |                   | 7.837   |   | -0.647            |
|             | 5.783            | 5.136             |         |   |                   |
| T.P         |                  |                   | 3.703   |   | 1.433             |
|             | 6.269            | 7.702             |         |   |                   |
| T.P         |                  |                   | 3.352   |   | 4.350             |
|             | 5.334            | 9.684             |         |   |                   |
|             |                  |                   | 6.712   |   | 2.972             |
|             |                  |                   | 5.950   |   | 3.734             |
|             |                  |                   | 4.624   |   | 5.060             |
|             |                  |                   | 2.678   |   | 7.006             |
|             | 2.209            |                   |         |   | 11.893            |
| T.P         |                  |                   | 3.702   |   | 5.982             |
|             | 4.157            | 10.139            |         |   |                   |
| Hwm.        |                  |                   | 0.077   |   | 10.062            |
|             |                  |                   |         |   | <del>10.062</del> |
| Hwm.        | <del>0.972</del> |                   | 0.972   |   | 9.067             |
|             |                  |                   |         |   | <del>11.111</del> |
| Top of wall | 2.406            | <del>12.545</del> |         |   | 12.545            |
| T.P         |                  |                   | 3.812   |   | 6.327             |

ZB  
MP  
ME  
BK

36

12-16-05

Description:

End 8 nails OP-12 Ref BK 1 pgs 15 & 17

0m-01

0m-02

0m-03

0m-04 ~~05~~

0m-07 Rod Inverted.

0m-06

~~Rod Inverted. 0m-09~~

Rod Inverted. Top wall @ 0m-09



| STA         | +     | Levels | Cont...         | - | Elev.    |
|-------------|-------|--------|-----------------|---|----------|
|             |       |        |                 |   | 6.327    |
|             | 5.167 | 11.494 |                 |   |          |
|             |       |        | 1.689           |   | 9.805    |
| T.P         |       |        | 4.876           |   | 6.618    |
|             | 3.682 | 10.300 |                 |   |          |
| Top of wall | 2.219 |        |                 |   | 12.519   |
| T.P         |       |        | 8.578           |   | 1.722    |
|             | 4.433 | 6.155  |                 |   |          |
| T.P         |       |        | 5.032           |   | 1.123    |
|             | 4.753 | 5.876  |                 |   |          |
| T.P         |       |        | 4.194           |   | 1.682    |
|             | 5.488 | 7.170  |                 |   |          |
| T.P         |       |        | 4.763           |   | 2.407    |
|             | 3.755 | 6.162  |                 |   |          |
| T.P         |       |        | 5.347           |   | 0.815    |
|             | 4.260 | 5.075  |                 |   |          |
| TBM.        |       |        | 4.651           |   | 0.424 F  |
|             |       |        | <del>4.65</del> |   |          |
|             |       |        | Error =         |   | -0.021 G |
|             |       |        |                 |   | 0.445 G  |
|             |       |        | Tie             |   |          |

RB  
MP  
ME  
JK

12-12-05

37

Description:

0m-08

Red Inverted.

~~0m-09~~ Top wall <sup>5/17</sup> ~~12/5~~

Fwd. 8 nail = 0P12





London #5 Low. chard.

| STA                      | +     | HI                          | -       | Elev.                            |
|--------------------------|-------|-----------------------------|---------|----------------------------------|
| LC05<br><del>LC0-5</del> |       | 7.883<br><del>9.475</del>   |         | -1.220<br><del>-0.379</del>      |
|                          | 9.103 |                             |         |                                  |
| T.P                      |       | 13.672<br><del>15.264</del> | 1.608   | 6.275<br><del>7.867</del>        |
| Low Cord.                | 7.397 |                             |         | <u>5.306</u><br><del>6.898</del> |
| Low Cord.                |       |                             | 8.398   | <u>5.274</u><br><del>6.866</del> |
|                          |       |                             |         | 6.268<br><del>7.860</del>        |
| T.P                      |       | 8.150<br><del>9.742</del>   | 7.404   | <del>7.860</del>                 |
|                          | 1.882 |                             |         |                                  |
| LC0-5                    |       |                             | 9.363   | -1.213 F<br><del>+0.379</del>    |
|                          |       |                             | Error = | 0.007                            |
|                          |       | Tie                         |         |                                  |
|                          |       |                             |         | -1.220 G                         |
|                          |       |                             |         | -0.007 E                         |

RB  
MP  
ME  
JK.

40

12-18-05

Description:

1/2 FIR = TBM ~~LC0-5~~ <sup>LC05</sup>

Bridge located on Mirabeau over London Canal.

London-5 Down Stream.

London-5 up stream

| STA           | +      | OP-16  | RS      | - | Elev.  |
|---------------|--------|--------|---------|---|--------|
| OP16<br>OP-16 |        |        |         |   | -3.596 |
|               | 5.622  | 9.218  |         |   |        |
| T.P           |        |        | 3.518   |   | 5.700  |
|               | 4.507  | 10.207 |         |   |        |
| T.P           |        |        | 2.884   |   | 7.323  |
|               | 10.417 | 17.740 |         |   |        |
| T.P           |        |        | 0.252   |   | 17.488 |
|               | 8.905  | 26.393 |         |   |        |
| FF            |        |        | 4.351   |   | 22.042 |
|               | 4.547  | 26.589 |         |   |        |
| T.P           |        |        | 9.104   |   | 17.485 |
|               | 0.214  | 17.699 |         |   |        |
| T.P           |        |        | 10.381  |   | 7.318  |
|               | 2.577  | 9.895  |         |   |        |
| T.P           |        |        | 4.239   |   | 5.656  |
|               | 3.429  | 9.085  |         |   |        |
| OP16A         |        |        | 4.934   |   | 4.151  |
| OP16B         |        |        | 4.883   |   | 4.202  |
| OP16C         |        |        | 4.789   |   | 4.296  |
|               |        |        | 5.502   |   | 3.583  |
|               |        |        | Error = |   | 0.013  |

Tie

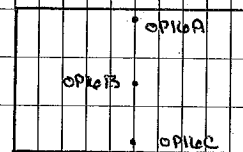
41

Pictures 0414-0415

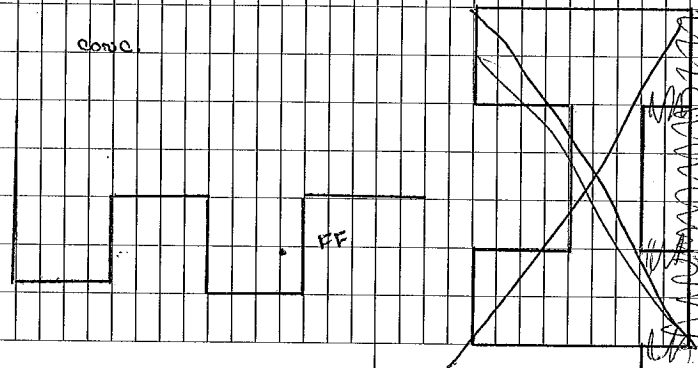
Final 8 Nail = OP16

FF for Pump Station #16

←  
OP16



OP16C



| Sta    | +     | HI    | -        | Elev.       |
|--------|-------|-------|----------|-------------|
| OP10   |       |       |          | -3.159      |
|        | 4.158 | 7.317 |          |             |
| FF     |       |       | 2.494    | 4.823       |
| OP-10A |       |       | 3.935    | 3.382       |
| OP-10B |       |       | 3.922    | 3.395       |
| OP-10C |       |       | 3.839    | 3.478       |
|        | 4.016 | 7.494 |          |             |
| OP-10  |       |       | 4.337    | 3.157       |
|        |       |       | Error =  | 0.002       |
|        |       |       | Tie      |             |
|        |       |       | Pictures | 0412 - 0413 |

PS 10 Citrus.

RB  
MP  
ME  
JK

12-18-05

42

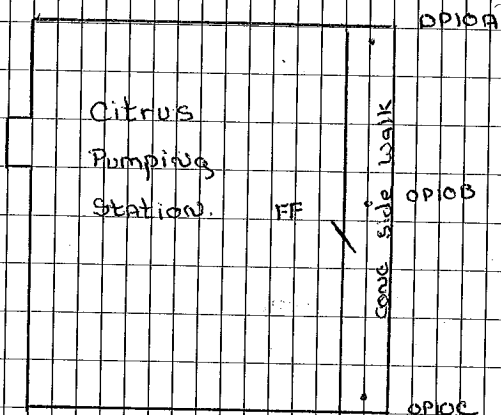
Description:

8' well = OP-10

cone

cone

cone



PS 14 Jahwecke

| STA   | +     | HI     | -                | Elev.  |
|-------|-------|--------|------------------|--------|
| OP14  |       |        |                  |        |
| OP-14 |       |        |                  | -2.894 |
|       | 6.862 | 9.756  |                  |        |
| I.P   |       |        | 0.264            | 9.492  |
|       | 7.414 | 16.906 |                  |        |
| I.P   |       |        | 1.276            | 15.631 |
|       | 9.677 | 25.308 |                  |        |
| FF    |       |        | 4.589            |        |
|       |       |        | <del>4.636</del> | 20.719 |
|       | 4.512 | 25.231 |                  |        |
| I.P   |       |        | 9.599            | 15.632 |
|       | 1.255 | 16.887 |                  |        |
| I.P   |       |        | 7.394            | 9.493  |
|       | 0.177 | 9.670  |                  |        |
| conc. |       |        | 4.988            | 4.682  |
| conc. |       |        | 4.803            | 4.867  |
| conc. |       |        | 5.021            | 4.649  |
| OP-14 |       |        | 6.764            | 2.906  |
|       |       |        | Error =          | 0.012  |
|       |       |        | Tie              |        |

Pictures 0416-0417

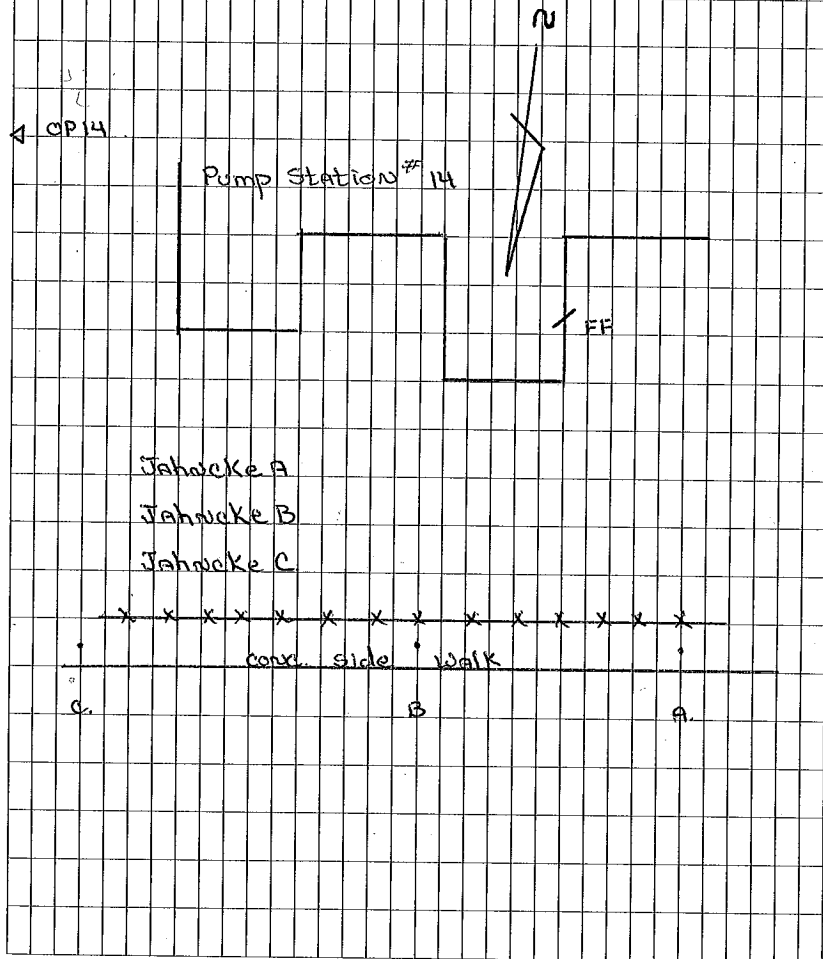
RIB  
MP  
ME  
JK

12-18-05

43

Description:

Final 8' wall = OP-14



| STA                  | +     | HI     | -       | Elev.  |
|----------------------|-------|--------|---------|--------|
| OP20                 |       |        |         | 3.025  |
|                      | 3.632 | 6.657  |         |        |
| FF                   |       |        | 2.969   | 3.688  |
| T.P                  |       |        | 0.888   | 5.769  |
|                      | 9.499 | 15.268 |         |        |
| T.P                  |       |        | 1.027   | 14.241 |
|                      | 8.898 | 23.139 |         |        |
| FF                   |       |        | 3.939   | 19.200 |
|                      | 4.143 | 23.343 |         |        |
| T.P                  |       |        | 9.107   | 14.236 |
|                      | 0.532 | 14.768 |         |        |
| T.P                  |       |        | 8.998   | 5.770  |
|                      | 0.889 | 6.659  |         |        |
| CONC                 |       |        | 3.671   | 2.988  |
| CONC                 |       |        | 3.718   | 2.941  |
| CONC                 |       |        | 3.694   | 2.965  |
| OP-20                |       |        | 3.637   | 3.022  |
|                      |       |        | Error = | 0.003  |
| Tie                  |       |        |         |        |
| Pictures 0408 - 0411 |       |        |         |        |

RB  
MP  
ME  
JK

12-18-05

44

Description:

End Nail = OP20

Amid-A Pump Station #10

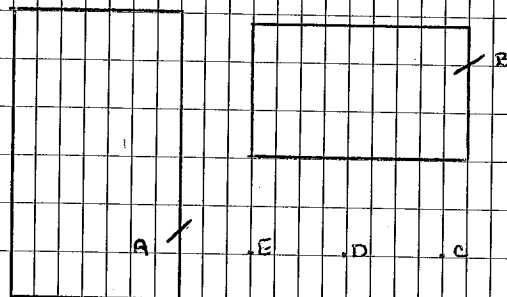
Amid-B  
Pump Station #10

Amid-C

Amid-D

Amid-E

End Nail = OP20



OP-20



| PS Elaine St. |                  |         |             |
|---------------|------------------|---------|-------------|
| STA           | +                | HI      | - Elev.     |
| TBM           | 4.888            | 5.433   | -0.545      |
| T.P           |                  |         | 3.663 1.770 |
|               | 3.992            | 5.762   |             |
| T.P           |                  |         | 3.823 1.939 |
|               | 5.039            | 6.978   |             |
| Elai-1        |                  |         | 5.153 1.825 |
| Elai-2        |                  |         | 5.179 1.799 |
|               | 4.977            | 6.776   |             |
| T.P           |                  |         | 4.835 1.941 |
|               | 3.812            |         |             |
|               | <del>3.812</del> |         |             |
| T.P           |                  |         | 3.167       |
|               | 3.244            |         |             |
| TBM           |                  | 5.276   | 0.554       |
|               |                  | Error = | 0.009       |
|               | Tie              |         |             |

RB  
MP  
ME  
JK

45

12-18-05

Description:

Elai = 8 nail

conc.

conc.

Elai-1

Elai-2



Elai = 8 nail

| Sta      | +     | HI    | -       | Elev. |
|----------|-------|-------|---------|-------|
| TBM OP18 |       |       |         | 4.823 |
|          | 4.213 | 9.036 |         |       |
| FF       |       |       | 7.481   | 1.555 |
|          | 7.921 | 9.476 |         |       |
| TBM OP18 |       |       | 4.659   | 4.817 |
|          |       |       | Error = | 0.006 |
|          |       |       | Tie     |       |

RB  
MP  
ME  
JK

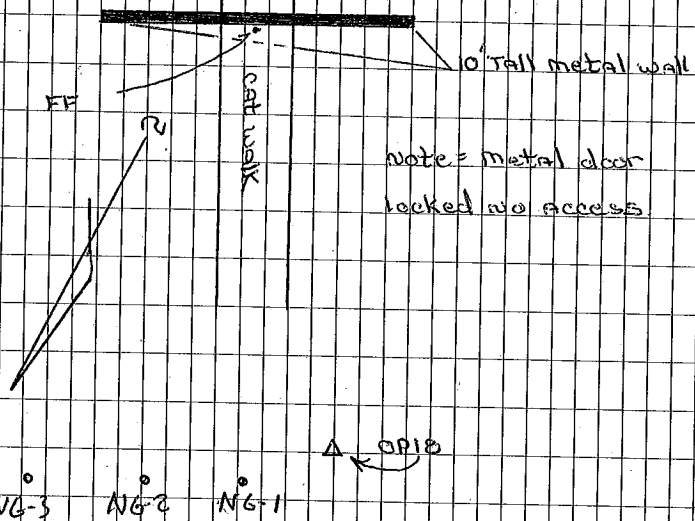
46

12-18-05

Description:

Final 8' wall = OP-18

Pumping Station # 18



| STA              | +     | GS Grant  | -       | Elev.        |
|------------------|-------|-----------|---------|--------------|
| TBM. <i>GRAN</i> |       |           |         | 1.594        |
|                  | 9.637 | 11.231    |         |              |
| FF               |       |           | 5.551   | 5.680<br>5.8 |
|                  | 5.213 | 10.893    |         |              |
| Grant A          |       |           | 7.452   | 3.441        |
| Grant B          |       |           | 7.854   | 3.039        |
| Grant C.         |       |           | 8.146   | 2.747        |
| TBM.             |       |           | 9.306   | 1.587        |
|                  |       |           | Error = | 0.007        |
|                  |       | Tie       |         |              |
| Pictures         |       | 0406-0407 |         |              |

RB  
MP  
DE  
JK

12-18-05

47

Description:

Grant = GRAN

Pump Station # Grant St.

conc.

conc.

conc.

GRAN

FF

N

TBM Grant

A.

B.

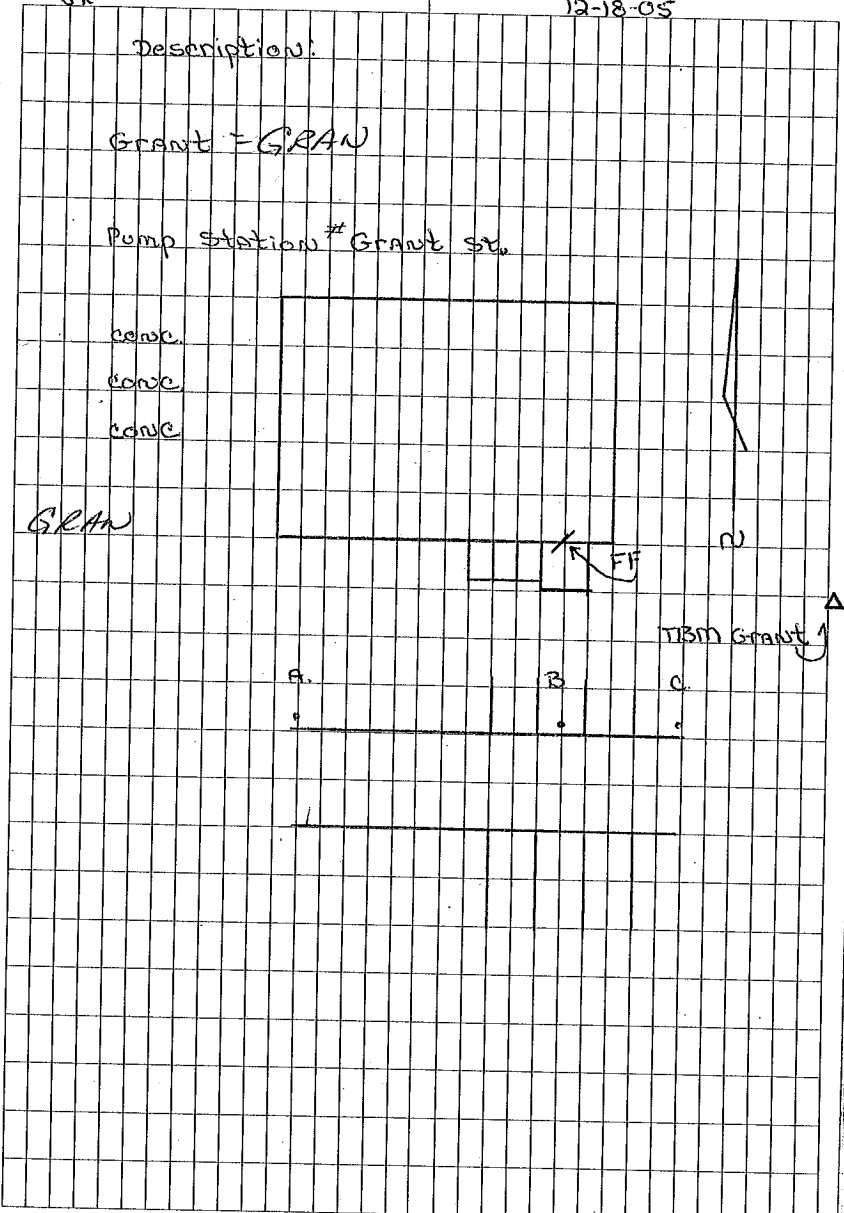
C.

.

.

.

Δ





| STA   | +     | HI    | -     | Elev.  |
|-------|-------|-------|-------|--------|
| IBM-D |       |       |       | 2.028  |
|       | 6.417 | 8.445 |       |        |
| I.P   |       |       | 5.062 | 3.383  |
|       | 4.808 | 8.191 |       |        |
| I.P   |       |       | 4.489 | 3.702  |
|       | 4.442 | 8.144 |       |        |
| I.P   |       |       | 4.164 | 3.980  |
|       | 4.351 | 8.331 |       |        |
| FF    |       |       | 4.537 | 3.794  |
| I.P   |       |       | 4.415 | 3.916  |
|       | 1.224 | 5.140 |       |        |
| FF    |       |       | 9.469 | -4.329 |
|       |       |       | 9.957 | -4.817 |
|       |       |       | 9.810 | -4.670 |
|       |       |       | 9.579 | -4.439 |
| I.P   |       |       | 1.224 | 3.916  |

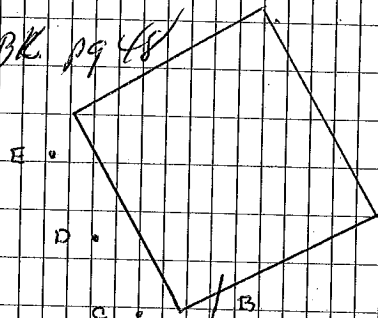
RB  
3P  
7DE  
JK

49

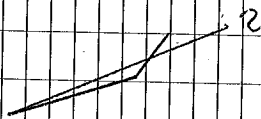
12-19-05

Description:

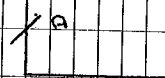
SEE THIS BK PG 48



PS 19 A Finished Floor - use this one



PS 19 B - Finished Floor



PS 19 C

PS 19 D

PS 19 E

| Sta   | Levels |       | Cont... |          |
|-------|--------|-------|---------|----------|
|       | +      | HI    | -       | Elev.    |
|       |        |       |         | 3.916    |
|       | 4.439  | 8.355 |         |          |
| T.P   |        |       | 4.350   | 4.005    |
|       | 4.448  | 8.453 |         |          |
| T.P   |        |       | 4.776   | 3.677    |
|       | 4.699  | 8.376 |         |          |
| T.P   |        |       | 4.989   | 3.387    |
|       | 4.844  | 8.231 |         |          |
| IBM-D |        |       | 6.190   | 2.041 F  |
|       |        |       |         | 2.028 G  |
|       |        | Tie   |         |          |
|       |        |       |         | +0.013 E |

RB  
MP  
ME  
JK

12-19-05

50

Description:

8 mail

| STA        | +     | HI     | -     | Elev. |
|------------|-------|--------|-------|-------|
| TBM - OP20 |       |        |       | 3.025 |
|            | 3.639 | 6.664  |       |       |
| T.P        |       |        | 3.682 | 2.982 |
|            | 5.806 | 8.788  |       |       |
| T.P        |       |        | 2.968 | 5.820 |
|            | 4.429 | 10.249 |       |       |
| T.P        |       |        | 3.826 | 6.423 |
|            | 4.558 | 10.981 |       |       |
| T.P        |       |        | 3.541 | 7.440 |
|            | 3.423 | 10.863 |       |       |
| T.P        |       |        | 5.176 | 5.687 |
|            | 3.817 | 9.504  |       |       |
| T.BM-E     |       |        | 3.604 | 5.900 |
|            | 4.135 | 10.035 |       |       |
| T.P        |       |        | 3.812 | 6.223 |
|            | 5.042 | 11.265 |       |       |
| T.P        |       |        | 4.649 | 6.616 |
|            | 4.762 | 11.378 |       |       |
| T.P        |       |        | 4.788 | 6.590 |
|            | 4.878 | 11.468 |       |       |
| T.P        |       |        | 5.471 | 5.997 |

8 nail = OP-20

TBM-E = 8 nail set in the NE corner of the intersection of Jer Jordan Rd and Terminal Rd. SE of a High power line s/c

| STA   | +                         | Levels | Cont.. | - | Elev.  |
|-------|---------------------------|--------|--------|---|--------|
| TP    | 4.749<br><del>5.471</del> | 10.746 |        |   | 5.997  |
| T.P   | 5.324                     | 12.808 | 3.262  |   | 7.484  |
| IBM-F | 2.687                     | 12.949 | 2.546  |   | 10.262 |
| T.P   | 3.012                     | 10.498 | 5.463  |   | 7.486  |
| T.P   | 4.883                     | 11.493 | 3.888  |   | 6.610  |
| T.P   | 4.681<br><del>4.644</del> | 11.272 | 4.902  |   | 6.591  |
| T.P   | 4.529                     | 11.047 | 4.754  |   | 6.578  |
| T.P   | 4.378                     | 10.526 | 4.899  |   | 6.148  |
| * T.P | 3.911                     | 9.794  | 4.643  |   | 5.883  |
| T.P   | 5.224                     | 10.897 | 4.121  |   | 5.673  |
| T.P   |                           |        | 3.334  |   | 7.563  |

|                                                                                   |  |
|-----------------------------------------------------------------------------------|--|
| IBM-F is a Swail 2.3 From Asph Rd. Named<br>Almonaster Ave +- 200' East of IHUC-2 |  |
|-----------------------------------------------------------------------------------|--|



| Sta      | +     | Levels | Cont. | - | Elev.    |
|----------|-------|--------|-------|---|----------|
| TP       |       |        |       |   | 7.563    |
|          | 3.607 | 11.170 |       |   |          |
| T.P      |       |        | 4.486 |   | 6.684    |
|          | 3.508 | 10.192 |       |   |          |
| T.P      |       |        | 4.568 |   | 5.624    |
|          | 2.463 | 8.087  |       |   |          |
| T.P      |       |        | 6.022 |   | 2.065    |
|          | 4.202 | 6.267  |       |   |          |
| TBM OP20 |       |        | 3.291 |   | 2.976 F  |
|          |       |        |       |   | 3.025 G  |
|          |       | Tie    |       |   |          |
|          |       |        |       |   | -0.049 E |

OP. 20





| STA                      | +                         | HI     | -                         | Elev.    |
|--------------------------|---------------------------|--------|---------------------------|----------|
| BM<br><del>BM</del> R189 |                           |        |                           | 4.82     |
|                          | 4.823                     | 9.643  |                           |          |
| Conc.                    |                           |        | 2.807                     | 6.836    |
| FF                       | 7.513<br><del>7.4</del>   | 9.394  | 7.762                     | 1.881    |
| TP                       | 8.894<br><del>8.224</del> | 10.776 | 7.442                     | 1.952    |
| TP                       |                           |        | 2.079                     | 8.697    |
| Concrete Pier            | 3.342                     | 12.039 |                           |          |
| <del>Low Cond.</del>     |                           |        | 9.559                     | 2.480    |
|                          | 9.163                     | 11.643 |                           |          |
| <del>TP</del> TP         |                           |        | 3.013<br><del>9.163</del> | 8.630    |
|                          | 2.042                     | 10.672 |                           |          |
| TP                       |                           |        | 8.716                     | 1.956    |
|                          | 6.054                     | 8.010  |                           |          |
| TBM                      |                           |        | 3.188                     | 4.822 F  |
|                          |                           |        |                           | 4.820 G  |
|                          |                           |        |                           | +0.002 E |

End Brass cap set vertically in a conc. 2' wide  
wall stamped R189 1961 = ~~HP~~ MOP

OPPS ps #5

IHC-1 R/R Bridge Ft. Ave - North  
S. 206

Note: Bridge was up when Concrete  
Pier was shot. After bridge was  
lowered - A measure up of 1.985  
From the concrete pier to the  
Low Cond

2.480 - Conc. Pier  
1.985 - measure up to  
4.465 - Low Cond elev.

| Jean Laffitte PS #6 |       |        |              |
|---------------------|-------|--------|--------------|
| SEA                 | +     | HI     | - Elev.      |
| TBM                 |       |        | 0.269        |
|                     | 5.419 | 5.688  |              |
| T.P                 |       |        | 4.228 1.460  |
|                     | 5.079 | 6.539  |              |
| T.P                 |       |        | 0.509 6.030  |
|                     | 7.626 | 13.656 |              |
| T.P                 |       |        | 1.835 11.821 |
|                     | 8.621 | 20.443 |              |
| FF                  |       |        | 4.919 15.523 |
| T.P                 |       |        | 8.621 11.821 |
|                     | 1.581 | 6.493  |              |
| T.P                 |       |        | 7.371 6.032  |
|                     | 0.461 | 6.448  |              |
| FF                  |       |        | 5.142 1.306  |
| FF                  |       |        | 3.952 2.496  |
| conc.               |       |        | 5.038 1.410  |
| conc                |       |        | 5.026 1.422  |
| T.P                 |       |        | 5.027 1.421  |

RB  
MP  
ME  
JK

57

12-20-05

Description:

End Snail = JEA #6

Pit. Picture's 5326/5388

0423-0425

JEA-A - Finished from Jean Laffitte  
#6 - Pump Station

JEA-B

JEA-C

JEA-D

JEA-E

JEA-F

SEE SKETCH  
NEXT PAGE



| STA            | +                | HI    | -                | Elev.  |
|----------------|------------------|-------|------------------|--------|
| TBM.           |                  |       |                  | 0.269  |
|                | 2.624            | 2.893 |                  |        |
| T.P            |                  |       | 4.489            | -1.596 |
|                | 4.546            | 2.950 |                  |        |
| T.P            |                  |       | 4.537            | -1.587 |
|                | 4.445            | 2.858 |                  |        |
| T.P            |                  |       | 4.264            | -1.406 |
|                | 4.542            | 3.136 |                  |        |
| T.P            |                  |       | 4.388            | -1.252 |
|                | 4.351            | 3.099 |                  |        |
| T.P            |                  |       | 4.370            | -1.271 |
|                | 3.989            | 2.718 |                  |        |
| T.P            |                  |       | 3.856            | -1.138 |
|                | 4.371            | 3.233 |                  |        |
| T.P            |                  |       | 4.063            | -0.830 |
|                | 7.408            | 0.578 |                  |        |
| <del>T.P</del> |                  |       | 4.672            | 1.906  |
| T.P            | <del>7.408</del> |       | 7.408            | -0.830 |
| <del>T.P</del> | 4.027            | 3.197 | <del>4.027</del> |        |
| T.P            | <del>4.761</del> |       | 4.761            | -1.564 |
| <del>T.P</del> | 4.316            | 2.752 | <del>4.316</del> |        |

Guichard PS # 2.

RS  
TP  
ME  
JK

59

12-20-05

Description

End Email = Jean To

Picture (5389)

FF = PS # 2 - Finished Floor - Guichard  
# 2

| STA            | +                | HI    | -                | Elev.    |
|----------------|------------------|-------|------------------|----------|
|                |                  | 2.757 |                  |          |
| T.P            | 3.949            |       | 3.949            | -1.197   |
| <del>T.P</del> | 4.068            | 2.871 | <del>4.068</del> |          |
| T.P            | <del>4.096</del> |       | 4.096            | -1.225   |
| <del>T.P</del> | 4.465            | 3.240 | <del>4.465</del> |          |
| T.P            | 4.723            |       | 4.723            | -1.483   |
| <del>T.P</del> | 4.028            | 2.845 | <del>4.028</del> |          |
| T.P            | <del>3.886</del> |       | 3.886            | -1.341   |
| <del>T.P</del> | 4.071            | 2.730 | <del>4.071</del> |          |
| T.P            | <del>4.433</del> |       | 4.433            | -1.703   |
|                | 4.963            | 3.260 | <del>4.963</del> |          |
| IBM            | <del>3.022</del> |       | 3.022            | 0.238 E  |
|                |                  |       |                  | 0.269 S  |
|                |                  |       |                  | -0.031 E |

RB  
mp  
ME  
JK

60

12-20-05

Description:

Jan #4

• FF

Pictures 0426-0427

0428



PS # 7 Bayou Ducros.

| STA      | +     | HI    | -     | Elev...  |
|----------|-------|-------|-------|----------|
| TBM      |       |       |       | -1.680   |
|          | 7.200 | 5.520 |       |          |
| CONC. A  |       |       | 4.151 | 1.369    |
|          |       |       |       |          |
| CONC. B  |       |       | 4.162 | 1.358    |
|          |       |       |       |          |
| CONC. C. |       |       | 4.153 | 1.367    |
|          | 3.314 | 4.681 |       |          |
| FF       |       |       | 3.428 | 1.253    |
|          |       |       |       |          |
| T.P      |       |       | 3.314 | 1.367    |
|          | 6.223 | 8.190 |       |          |
| TBM      |       |       | 9.862 | -1.672 E |
|          |       |       |       | -1.680 G |
|          |       |       |       | -0.008 E |

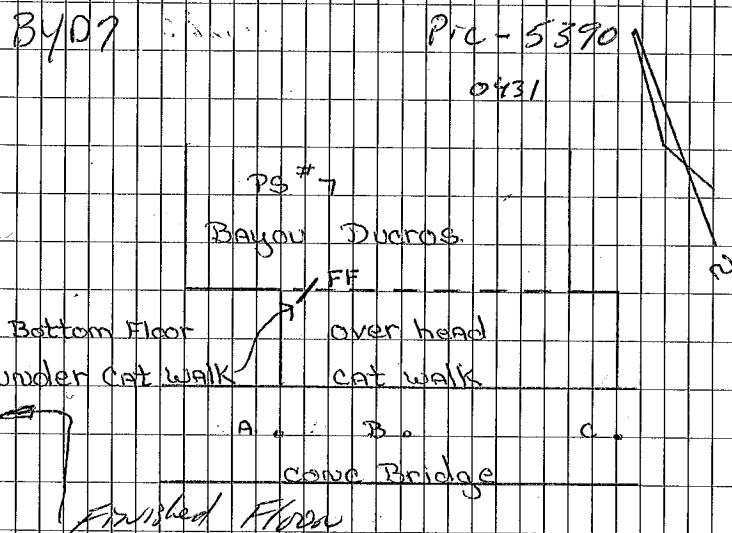
Tie

RB  
MP  
ME  
JK

61

12-20-05

Description:



BY07

Bayou Villere PS # 3

| STA | +     | HI     | -     | Elev.  |
|-----|-------|--------|-------|--------|
| TBM |       |        |       | -1.680 |
|     | 9.944 | 8.264  |       |        |
| T.P |       |        | 4.209 | 4.055  |
|     | 8.483 | 12.538 |       |        |
| T.P |       |        | 4.186 | 8.352  |
|     | 2.846 | 11.198 |       |        |
| T.P |       |        | 3.922 | 7.276  |
|     | 4.472 | 11.748 |       |        |
| T.P |       |        | 4.091 | 7.657  |
|     | 4.656 | 12.313 |       |        |
| T.P |       |        | 3.979 | 8.334  |
|     | 3.826 | 12.160 |       |        |
| T.P |       |        | 4.443 | 7.717  |
|     | 3.477 | 11.194 |       |        |
| T.P |       |        | 3.913 | 7.281  |
|     | 4.728 | 12.009 |       |        |
| T.P |       |        | 7.467 | 4.542  |
|     | 1.972 | 6.514  |       |        |
| T.P |       |        | 4.797 | 1.717  |
|     | 5.461 | 7.178  |       |        |
| FF  |       |        | 5.018 | 2.160  |

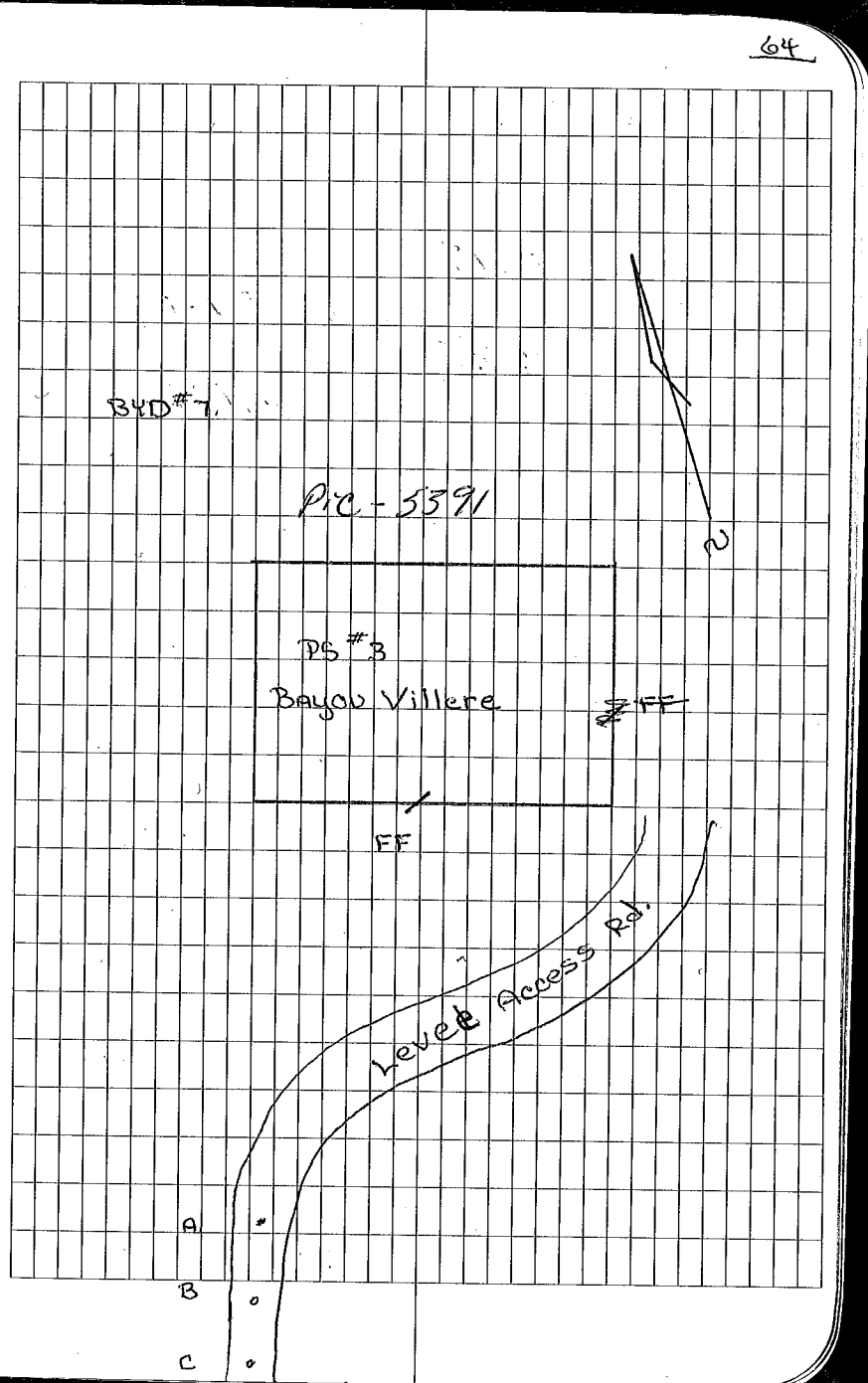
BYD #7

Picture 0429

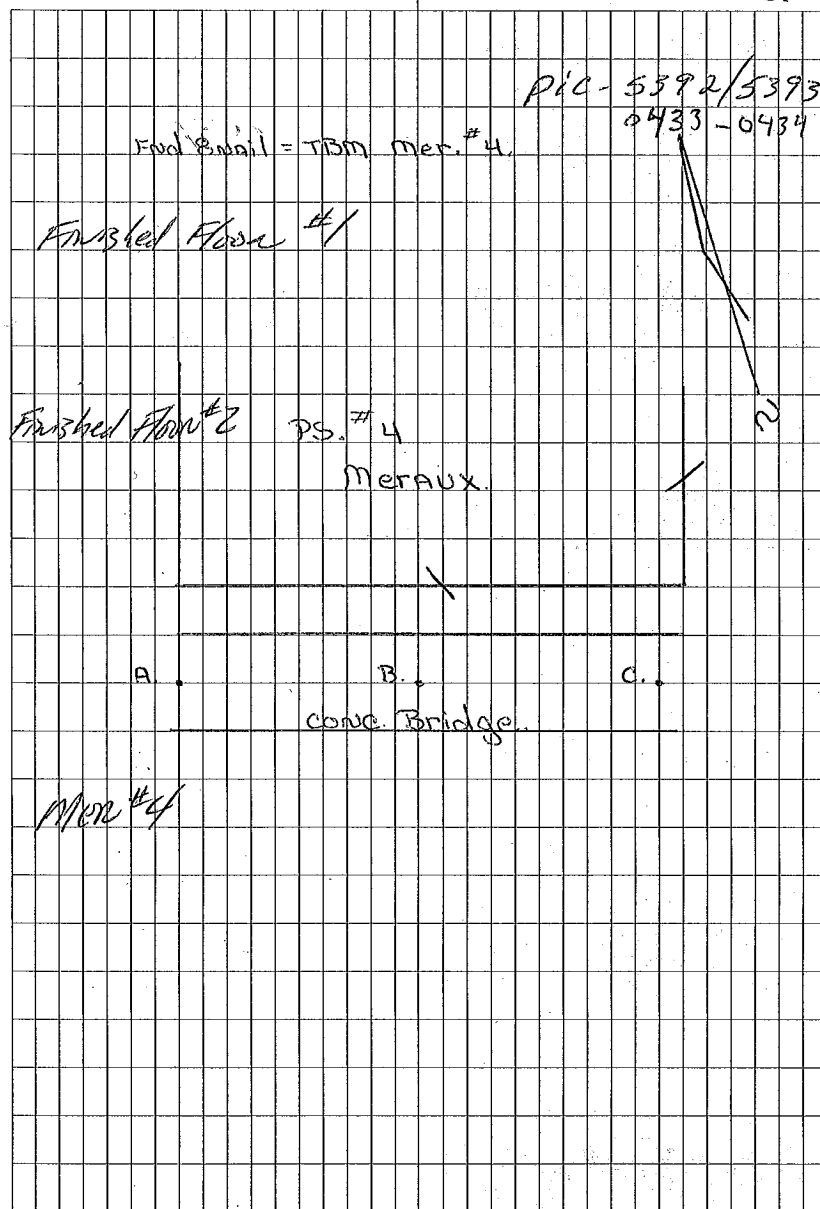
ps #3 - Finished From Bayou Villere  
43 PIC

| Sta      | +     | PS # 3 | cont... | Elev.  |
|----------|-------|--------|---------|--------|
| FF       |       | H1     | -       | 2.160  |
|          | 5.291 | 7.451  |         |        |
| T.P      |       |        | 5.723   | 1.728  |
|          | 3.648 | 5.376  |         |        |
| Gravel A |       |        | 5.381   | -0.005 |
| Gravel B |       |        | 5.542   | -0.216 |
| Gravel C |       |        | 5.369   | 0.007  |
| T.P      |       |        | 3.094   | 2.282  |
|          | 3.941 | 6.223  |         |        |
| T.P      |       |        | 4.931   | 1.292  |
|          | 3.281 | 4.573  |         |        |
| T.P      |       |        | 4.953   | -0.380 |
|          | 3.519 | 3.139  |         |        |
| T.P      |       |        | 3.003   | 0.136  |
|          | 3.572 | 3.708  |         |        |
| T.P.     |       |        | 3.689   | 0.019  |
|          | 3.908 | 3.927  |         |        |
| T.P      |       |        | 3.396   | 0.531  |

| STA  | +     | PS # 3 | cont... | - | Elev.    |
|------|-------|--------|---------|---|----------|
| TP   |       |        |         |   | 0.531    |
|      | 3.084 | 3.615  |         |   |          |
| T.P. |       |        | 3.845   |   | -0.230   |
|      | 3.635 | 3.405  |         |   |          |
| TBM. |       |        | 5.101   |   | -1.696 F |
|      |       |        |         |   | -1.680 G |
|      |       |        |         |   | +0.016 E |



| Sta         | +      | HI     | -     | Elev.    |
|-------------|--------|--------|-------|----------|
| TBM - MER 4 |        |        |       | 11.591   |
|             | 5.401  | 16.992 |       |          |
| FF #1       |        |        | 3.071 | 13.921   |
|             | 0.788  | 14.709 |       |          |
| IP          |        |        | 9.787 | 4.922    |
|             | 2.208  | 7.130  |       |          |
| FF #2       |        |        | 4.699 | 2.431    |
| CONC A      |        |        | 5.654 | 1.476    |
| CONC B      |        |        | 5.684 | 1.446    |
| CONC C      |        |        | 5.701 | 1.429    |
|             | 10.657 | 12.086 |       |          |
| TBM         |        |        | 0.496 | 11.590 F |
|             |        |        |       | 11.591 G |
|             |        | Tie    |       | -0.001 E |



E J Gore Pumping Station.

$\frac{66}{2}$

| STA        | +     | HI     | -     | Elev.   |
|------------|-------|--------|-------|---------|
| TBM. VCL-1 |       |        |       | 7.080   |
|            | 4.967 | 12.047 |       |         |
| J.P        |       |        | 5.829 | 6.218   |
|            | 3.343 | 9.561  |       |         |
| FF         |       |        | 4.809 | 4.752   |
|            | 4.940 | 9.692  |       |         |
| TP         |       |        | 3.472 | 6.220   |
|            | 6.115 | 12.335 |       |         |
| TBM        |       |        | 5.250 | 7.085 F |
|            |       |        |       | 7.082 G |
|            |       | Tie    |       | 7.005   |

|                              |  |
|------------------------------|--|
| Pie 5394/6395                |  |
| End 5/8 Iron Rod = TBM VCL-1 |  |
| VCL-1                        |  |

| STA        | +     | HI    | -     | Elev.    |
|------------|-------|-------|-------|----------|
| TBM        |       |       |       | 6.818    |
|            | 1.953 | 8.771 |       |          |
| FP Conc. A |       |       | 6.606 | 2.165    |
| Conc. B    |       |       | 6.514 | 2.257    |
| Conc. C    |       |       | 6.614 | 2.157    |
|            | 5.523 | 7.680 |       |          |
| FF         |       |       | 6.444 | 1.236    |
| TBM.       |       |       | 0.863 | 6.817 F  |
|            |       |       |       | 6.818 G  |
| FBM.       |       |       |       | -0.001 C |

RB  
MP  
ME  
JK

67  
2

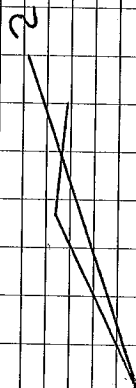
Description:

Find. 8 nail = TBM STMV P.L. 5396

Finished Floor St. Mary  $\frac{1}{8}$ "  
1 FF  $\leftarrow$   
STMV

CAT WALK

C B A







| Sta    | +     | HI     | -     | Elev. |
|--------|-------|--------|-------|-------|
| T.P    |       |        | 7.430 | 6.012 |
|        | 2.927 | 8.939  |       |       |
| APH-11 |       |        | 1.629 | 7.310 |
| T.P    |       |        | 4.378 | 4.561 |
|        | 5.329 | 9.890  |       |       |
| APH-02 |       |        | 0.367 | 9.523 |
| T.P    |       |        | 5.227 | 4.663 |
|        | 5.472 | 10.135 |       |       |
| T.P    |       |        | 5.369 | 4.766 |
|        | 3.883 | 8.649  |       |       |
| I.P    |       |        | 4.799 | 3.850 |
|        | 4.768 | 8.618  |       |       |
| AP-01  |       |        | 7.804 | 0.814 |

5

LEVEL CHECK

ORLEANS MARINA

| STA  | +     | HI     | -     | Elev.     |
|------|-------|--------|-------|-----------|
| OMφ3 |       |        |       | 5.060     |
|      | 6.302 | 11.362 |       |           |
|      |       |        | 8.386 | 8.976     |
|      |       |        | 7.626 | 3.736     |
|      |       |        | 5.753 | 5.609     |
|      |       |        | 4.366 | 6.996     |
|      |       |        | 1.295 | 10.967    |
|      | 0.544 |        |       | 11.906    |
|      |       |        | 2.178 | 9.184     |
|      | 1.124 |        |       | 12.486    |
| T.P  |       |        | 5.053 | 6.309     |
|      | 4.526 | 10.835 |       |           |
|      |       |        | 1.025 | 9.810     |
|      | 1.686 |        |       | 12.521    |
| T.P  |       |        | 4.526 | 6.309     |
|      | 4.796 | 11.105 |       |           |
| OMφ3 |       |        | 6.047 | 5.058 FO  |
|      |       |        |       | 5.060 BTU |
|      |       |        |       | -0.002    |

12-22-05  $\frac{70}{2}$

REF. THIS BK. PG 36.

OMφ1  
 OMφ2  
 OMφ4  
 OMφ5  
 OMφ6  
 OMφ7 Rod Inverted  
 OMφ9  
 TOP OF WALL @ OMφ9 Rod Inverted  
  
 OMφ8  
 Top of wall @ Ship #5 Rod Inverted

| Sta      | PS 18 | Maxent | NG       | Shots     |
|----------|-------|--------|----------|-----------|
|          | +     | HI     | -        | Elev      |
| TBM-0P18 |       |        |          | 4.823     |
|          | 6.609 | 11.432 |          |           |
| NG-1     |       |        | 5.441    | 5.991     |
| NG-2     |       |        | 4.826    | 6.606     |
| NG-3     |       |        | 4.847    | 6.585     |
|          | 5.153 | 11.738 |          |           |
| TBM-0P18 |       |        | 6.918    | 4.820     |
|          |       |        |          |           |
|          |       |        | Error =  | 0.003     |
|          |       |        |          |           |
|          |       |        | Pictures | 0418-0419 |

RB  
MP  
ME  
CL

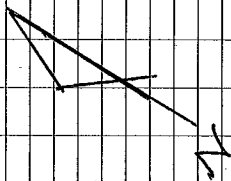
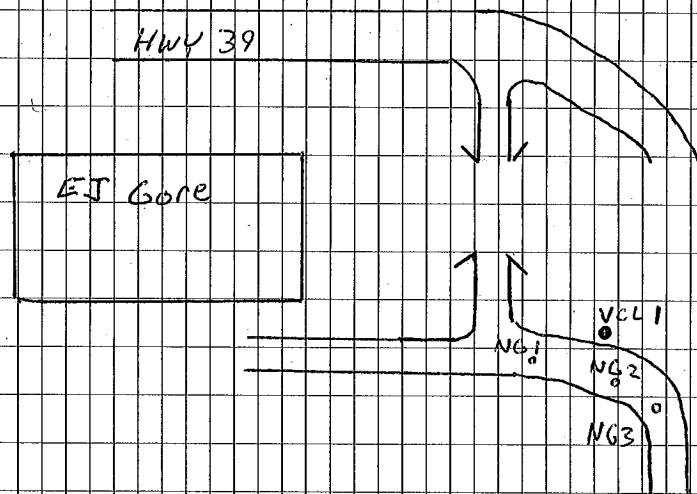
1-10-06  $\frac{71}{2}$

|              |  |
|--------------|--|
| SEE PAGE 416 |  |
| FOR SKETCH   |  |

| STA      | EJ Gore |        | NG Shots |       |
|----------|---------|--------|----------|-------|
| +        | HI      | -      | ELEV     |       |
| TBM-VCL1 |         |        |          | 7.080 |
|          | 5.459   | 12.539 |          |       |
| NG-1     |         |        | 4.617    |       |
| NG-2     |         |        | 4.892    |       |
| NG-3     |         |        | 5.098    | 7.441 |
|          | 5.043   | 12.484 |          |       |
| TBM-VCL1 |         |        | 5.404    | 7.080 |
|          |         |        | Error =  | 0.000 |

RB  
MP  
ME  
CL

1-10-06  $\frac{72}{2}$



Low Cord - Orleans 5  
 Orleans Canal @ Lakeshore Dr.

| STA       | + H.L. | -     | ELEV.         |
|-----------|--------|-------|---------------|
| Orleans 5 | 4.55   | 13.81 | 9.26          |
| Low Cord  | 6.78   | 13.98 | 6.61          |
| Orleans 5 |        | 4.77  | 9.26 F        |
|           |        |       | 9.26 G        |
|           |        |       | <u>0.00 E</u> |

Hurons  
 Prospect  
 Medical

2-7-06

73

TBM - Orleans 5 - Ref this B.C. pg 18

- Bottom of Bridge - south side