

Book 1  
# 060850

Name .....

Address .....

Phone .....

Projects .....

.....  
.....  
.....  
.....  
.....  
.....  
.....  
.....  
.....  
.....  
.....  
.....  
.....  
.....  
.....  
.....  
.....  
.....  
.....  
.....

This book is published on a fine 50% cotton-content ledger paper, specially treated for maximum archival service, and protected by a water resistant surface sizing.

DT-0659

**ELAN** Publishing Co., Inc.  
Meredith, N.H. 03253

INDEX

Date	Page	Description
1/14/06	1	Title page
1/14/06	25	Van top sketch GPS1
1/14/06	26	level Run
1/15/06	27	level Run
1/15/06	28 thru 30	" "
"	31	Sketch
1/15/06	32	Low Coas

Mitchele Pass USGS gauge site  
 " " " "  
 F570 gauge site USGS  
 Smithson Mitema gauge site  
 " " " "  
 R/R Base @ OPD6 & top cone wall

TITLE PAGE

Book # 060850

~~BRANDON WEBB~~

12-14-05

①

~~MIKE DIAL~~

LEVEL #

~~JOSE GREGORY~~

076

~~DAN PARSONS~~

CALIBRATED 12/21/05

Parpent

LEVEL SN = UH053

Webb

LEVEL TYPE = DL102C

DIAL

Johnson

LEVELS TO 1<sup>ST</sup> FLOOR - PUMP STATIONS

STA	+	HI	-	ELEV	Adj. Elev
OP#6	6.11	5.733		<del>-377</del>	-0.289
3-3-1			4.91	0.823	0.911
	4.84	5.663			
OP#6			6.03	<del>-367</del>	<del>-0.279</del>
				<del>-377</del>	
				<del>-0.01</del>	
<hr/>					
OP6	9.56	9.183		<del>-377</del>	-0.289
TP1			4.895	4.288	4.376
TP1	11.00	15.288			
3-3-2			1.972	13.376	13.404
3-3-3			1.053	14.235	14.323
3-3-4			1.988	13.300	14.388
3-3-5			1.083	14.205	14.293
3-3-6			2.103	<del>13.250</del>	13.346
3-3-7			1.111	14.177	14.265
3-3-8			9.92	5.368	5.456
B-3-6	2.07	15.328			
TP1			11.04	4.288	4.376
TP1	4.688	8.976			
OP6			9.35	<del>-374</del>	.286

CLOSURE 0.003

DESCR.  
OP 6 (PK NAIL)  
First Floor Elev. OP#6

OP6 (PK NAIL)

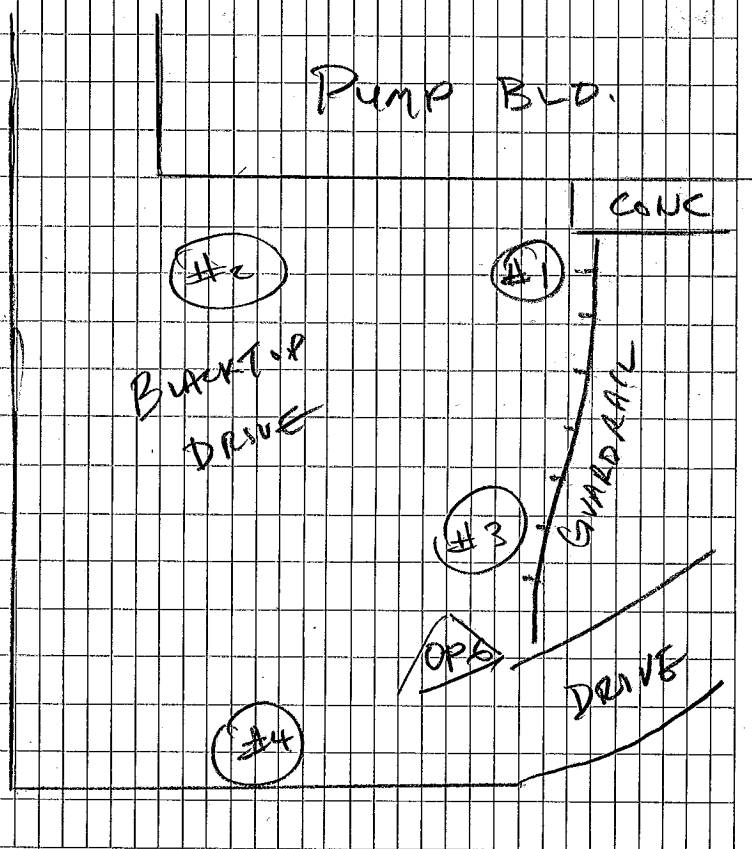
- # 3-3-2 TOP OF CONC.
- # 3-3-3 TOP OF RAIL
- # 3-3-4 TOP OF CONC
- # 3-3-5 TOP OF RAIL
- # 3-3-6 TOP OF CONC
- # 3-3-7 TOP OF RAIL
- # 3-3-8 17<sup>TH</sup> ST. - 2<sup>ND</sup> LOW CORNER R.R.

STA	+	HI	-	ELEV
OP6	6.155	5.778		-1.377 - .289
TBM 1		"	5.312	0.466 - .554
TBM 2			5.04	0.738 - .826
TBM 3			5.69	0.088 - .176
TBM 4			4.98	0.798 - .886
OP6			6.155	-1.377 - .289

CLOSURE 0.000

DESC.

OP6 (PK NAIL)  
 ELEV CHECK #1  
 ELEV CHECK #2  
 ELEV CHECK #3  
 ELEV CHECK #4



Pump Station LEVEL PLPS

12-14-05

(14)

BRANDON

LEVEL #

MIKE

PLPS

JOSH

CAULATED 12/8/05

DAN

LEVEL SW: V1H053

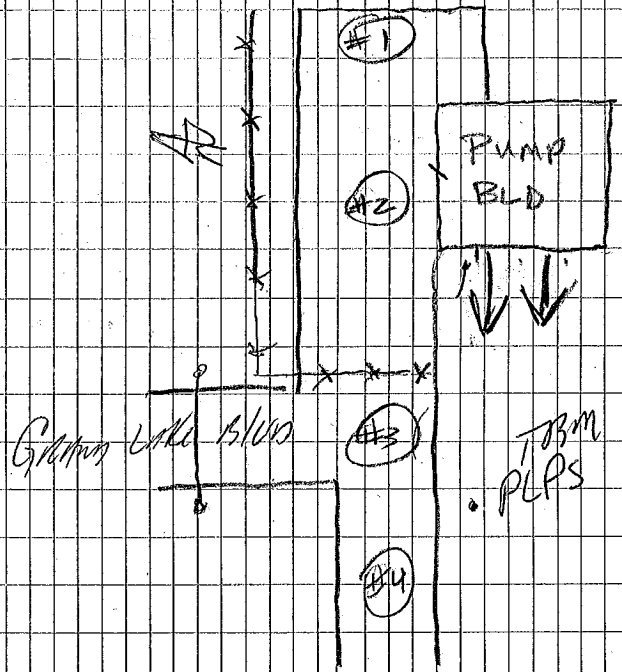
LEVEL TYPE: DL10ZC

LEVELS TO 1<sup>ST</sup>, 2<sup>ND</sup> FLOOR, PUMP STATION

STA	+	HI	-	ELEV
PLPS	4.71	-1.455	-6.214	-6.165
		-1.504		
		4.93	-6.434	-6.385
	10.89	<del>10.89</del>	+9.39	9.435
		5.125	-6.629	-6.580
		5.485	-6.99	-6.940
		5.38	-6.881	-6.835
TP		3.32	-4.824	-4.775
	3.24	-1.589		
PLPS		4.63	-6.214	-6.165

CLOSURE 0.000

DESCRIP  
 12" gal/walk  
 (REBAR) -6.214 US FT.  
 (FFE 1<sup>ST</sup> FLOOR) # PLPS - 1  
 (FFE 2<sup>ND</sup> FLOOR) # PLPS - 2  
 ELEV CHECK #1  
 ELEV CHECK #2  
 ELEV CHECK #3  
 ELEV CHECK #4

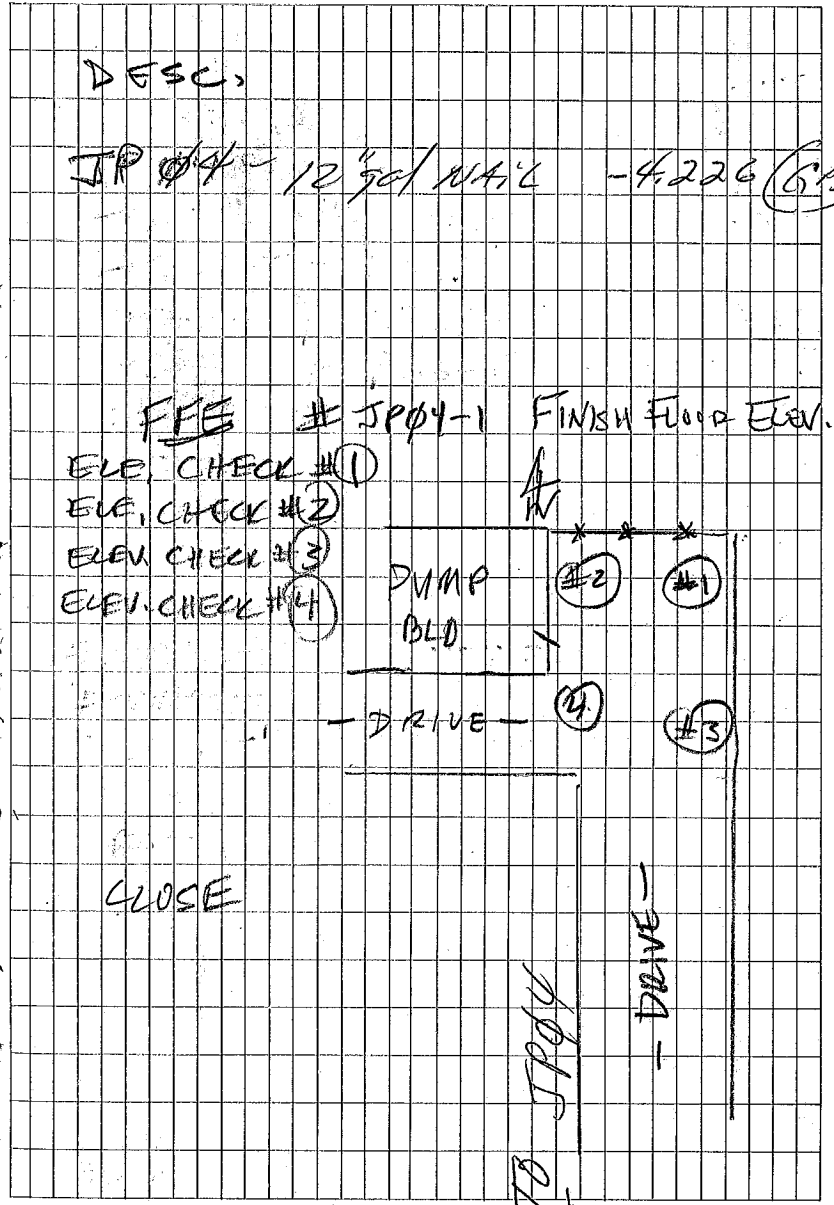






LEVEL TO ISI FLOOR PUMP STATION

STA	+	HI	-	ELEV
JPO4	5.73	1.204		-4.160 -4.226
TP1			5.19	-3.986 -3.92
	4.99	1.004		
TP2			5.55	-4.546 -4.48
	4.95	0.404		
TP3			1.920	-1.516 -1.45
			2.43	-2.026
			3.085	-2.681
			5.02	-4.646
			5.0	-4.596
	1.92	0.404		
TP2			4.95	-4.546
	5.63	1.084		
TP1			5.06	-3.976
	5.10	1.424		
JPO4			5.34	4.216
CLOSURE 0.01				



PUMP STATION LEVEL JP03

⑧

12-14-05

~~LEVEL #~~  
~~JP03~~

CALIBRATED 12/8/05

LEVEL SN - VHO53

LEVEL TYPE - DL102C

BRANDON

JOSH

MIKE

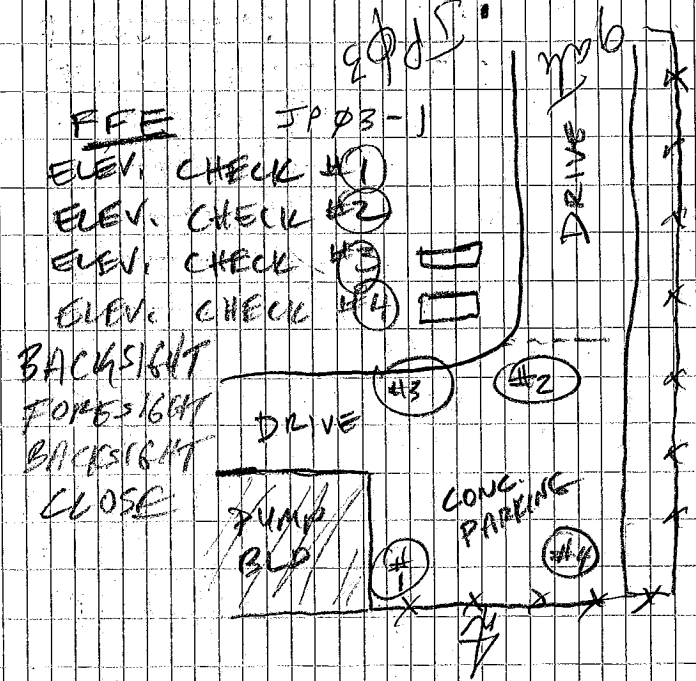
DAV

LEVEL TO 1<sup>ST</sup> FLOOR PUMP STATION

STA	+	HI	-	ELEV
				-5.400
JP03	6.80	1.324		<del>-5.476</del>
TP1			2.88	-1.556
	8.32	6.764		
TP2			0.965	<del>-5.799</del>
			5.05	-1.714
			7.53	-0.766
			6.78	-0.016
			7.21	<del>-0.446</del>
	0.965	6.764		
TP1			8.33	-1.566
	3.05	1.484		
JP03			6.97	<del>-5.486</del>

CLOSURE 0.01

DESCRIPTION  
 JP03 REBAR -5.476 FT



PUMP STATION LEVEL JP Ø2

(16)

12-14-05

LEVEL #

JPØ2

CALIBRATED 12/8/05

LEVEL SN - UH053

LEVEL TYPE - DL102C

DAN  
JOSH  
MIKE  
BRANDON

LEVEL TO 1ST FLOOR PUMP STATION

STA	+	HI	-	ELEV
				-2.848
JP02	6.66	<del>3.726</del>		<del>2.934</del>
TP1			3.40	<del>0.326</del>
	3.40	<del>3.726</del>		
			4.72	-0.994
			3.68	2.046
			2.785	-0.941
			3.025	0.701
JP02			6.66	-2.934

CLOSURE 0.000

①

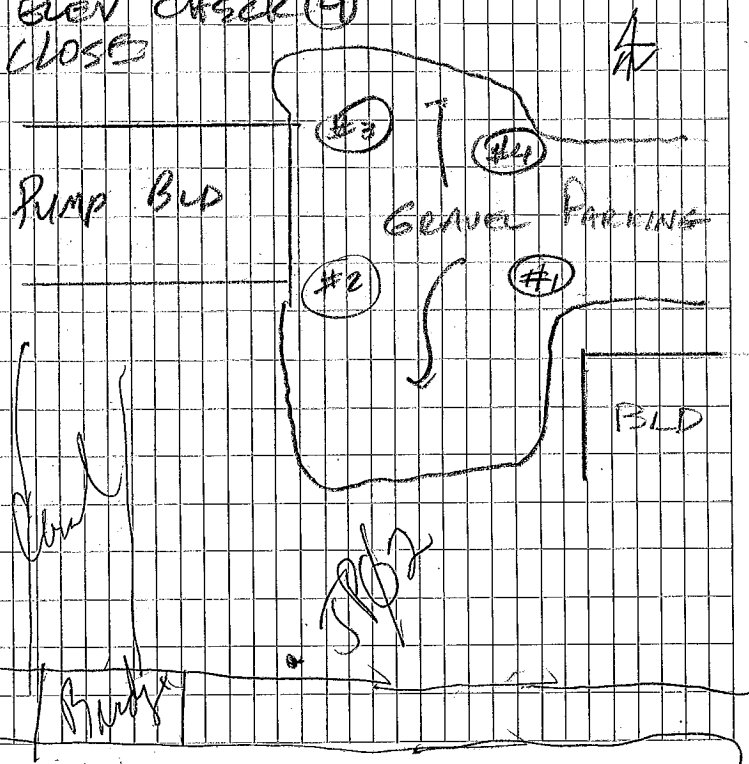
DESCRIPTION

JP02 REBAR -2.934  
FFE JP02-1

- ELEV. CHECK #1
- ELEV. CHECK #2
- ELEV. CHECK #3
- ELEV. CHECK #4
- CLOSE

Pump Bld

Gravel Padings



Pump Station Level JP01

12-14-05 (12)

JOSH  
MIKE  
BRANDON  
DAN

LEVEL #  
~~JP 01~~

CALIBRATED 12/8/05  
LEVEL SN-WH 053  
LEVEL TYPE-DL102C

LEVEL TO 1ST FLOOR ELEV.

STA	+	HI	-	ELEV
				-3.478
JPØ1	4.80	<del>1.231</del>		<del>-3.569</del>
TP1			3.71	-2.479
	12.44	9.961		
TP2			6.90	3.06
	6.70	9.761		
TP1			12.25	-2.489
	4.065	1.576		
			3.58	-2.004
			4.125	-2.549
			5.47	-3.894
			5.32	-3.744
JPØ1			5.16	-3.584

CLOSURE 0.015

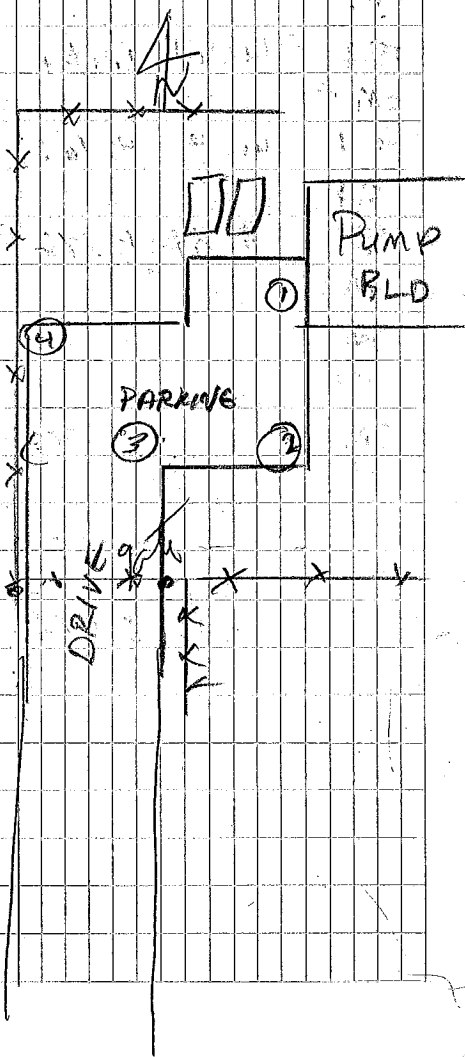
DESCRIPTION

JPØ1 REBAR -3569 FT.

FFE JPØ1-1

- ELEV. CHECK ①
  - ELEV. CHECK ②
  - ELEV. CHECK ③
  - ELEV. CHECK ④
- CLOSE

Level JPØ1



STA + Hk - New  
OP66

TP

✓ Bid

✓ Bid



# PUMP STATION Level OP12

STA	+	HI	-	ELEV
ALCO				6.135
<del>ALCO</del>	2.88	9.015		
TP			2.98	6.035
<del>TP</del>	4.265	10.30		
TP			5.67	4.63
<del>TP</del>	4.98	9.61		
TP			5.16	4.45
<del>TP</del>	4.87	9.32		
TP			4.73	4.59
<del>TP</del>	4.75	9.34		
TP			5.44	3.90
<del>TP</del>	5.085	8.985		
TP			3.29	5.690
<del>TP</del>	4.60	10.295		
TP			7.84 <sup>0</sup>	2.455
<del>TP</del>	4.27	6.725		
TP			5.08	1.645
<del>TP</del>	4.42	6.065		
OP12 TP			5.61	0.455
OP12	5.51	5.965		
OP12-1 (sme slot)			3.34	2.025
TP			4.32	1.645
<del>TP</del>	4.75	6.395		

MIKE  
JOSH  
BRANDON  
DAN

12-15-05 (15)

LEVEL #  
OP12

DESCRIPTION  
AULM, DISK

CALIBRATED 12/8/05  
LEVEL SN-VH053  
LEVEL TYPE-DL102C

REBAR 12" GAL. NAIL  
REBAR  
FINISH FLOOR ELEVATION

PUMP STATION LEVEL OP12

STA	+	HI	-	ELEV
TP			3.945	2.45
<del>TR</del>	7.73	10.18		
TP			4.4 <del>7</del>	5.71
<del>TR</del>	4.07	9.78		
TP			5.87	3.91
<del>TR</del>	5.49	9.40		
TP			4.79	4.61
<del>TR</del>	5.05	9.66		
TP			5.20	4.46
<del>TR</del>	4.56	9.02		
TP			4.88	4.14
<del>TR</del>	5.405	9.545		
TP			4.00	5.545
<del>TR</del>	3.22	8.765		
ALCO			3.12	5.645 F
			<u>6.135</u>	G

DESCRIPTION

PC Run - Forward Run this BK  
19 17.

PUMP STATION LEVEL OPI2 (RERUN)

STA	+	HI	-	ELEV
ALCO				6.135
<del>ALCO</del>	<del>3.03</del>	9.295		
TP			3.26	6.035
TR	4.14	10.175		
TP			5.54	4.635
TR	4.95	9.585		
TP			5.13	4.855
TR	5.01	9.465		
TP			4.86	4.605
	4.92	9.525		
TP			5.62	3.905
	5.08	8.985		
TP			3.28	5.705
	4.43	10.135		
TP			7.70	2.435
	3.99	6.425		
TP			4.80	1.625
	4.54	6.165		
OPI2			5.72	0.445

12-15-05 (17)

MIKE  
JOSH  
DAN  
BRANDON

~~LEVEL~~  
~~OPI2 (RERUN)~~  
CALIBRATED 12/8/05  
LEVEL SN - UH053  
LEVEL TYPE - DL102C

DESCRIPTION  
ALUM DISK

SEE FA13 BK PG 15 FOR T18  
CLOSURE GOOD w/ 1ST RUN. - 0.01-

Level Check

	SMA	+	H <sub>h</sub>	-	Open
	OP12				0.455
			5.72		6.175
	OP12-1				3.55
					2.625 F
					<u>2.625 G</u>
					0.000

Wisen Crew

1245-05

18

Tie to this BK 15 - First Floor  
Open

IIIO EASTBOUND

~~17th STREET~~ = LOW ROAD LEVEL

STA	+	HI	-	ELEV
OPRG				-0.377
	8.72	8.343		
TP <sub>1</sub>			3.76	4.583
	6.01	10.593		
TP <sub>2</sub>			5.60	4.993
	3.53	8.523		
TP <sub>3</sub>			4.42	4.103
	4.13	8.233		
TP <sub>4</sub>			3.69	4.54
	4.94	9.483		
TP <sub>5</sub>			3.165	6.318
	2.40	8.718		
TP <sub>6</sub>			2.96	5.758
	3.47	9.228		
TP <sub>7</sub>			2.93	6.298
	3.05	9.348		
TP <sub>8</sub>			3.75	5.598
	3.36	8.958		
TP <sub>9</sub>			3.12	5.838
	3.67	9.508		

(19)

12-15-05

LEVEL SN = DE

LEVEL TYPE = DL102C

MIKE  
BRANDON  
JOSH

DAN

DESCRIPTION

PK NAIL IN ASPHALT

NOTE: Not Needed

I 10 EAST BOUND = Low Flood

STA	HI	ELEV
TP 10	8.13	14.198
I 10 E		6.25
I 10 E-1	0.46	13.918
TP 10	6.93	12.998
TP 9	5.35	11.188
TP 8	6.19	11.708
TP 7	4.73	10.038
TP 6	4.64	10.408
TP 5	5.26	11.608
TP 4	3.85	8.428
TP 3	4.75	8.888
TP 2	5.60	10.638

DESC.

LOW FLOOD I-10 EAST BOUND  
BENCH ON WEST WALL OF CANAL

Not Needed

I10 EASTBOUND = Low Horn

STA	+	HI	-	ELEV
TP1		7.848	6.01	<del>3.628</del> 4.628
	3.22	<del>6.848</del>		
OP06			8.15	<del>-1.302</del> -0.302 F -0.377 G <u>-0.075 E</u>
	CHECK			
STA	+	HI	-	ELEV.
TP9				5.838
	5.35	11.188		
TP8			5.59	5.598 F 5.598 G <u>0.000 E</u>

DESC.

Not Needed

see this BK pg 19. Changed shot on pg 20. From 6.59 to 5.59 - Re calculated levels to tie in at OP06.

17TH CANAL - 1 = LOW FORD LEVEL

12-15-05

(12)

LEVEL SN - 46953  
 LEVEL TYPE - DL02C  
 CALIBRATED 12/8/05

BRANDON  
 JOSH  
 MIKE  
 DAN

STA	+	HI	-	ELEV
OP06				<del>0.377</del> <del>-0.289</del>
	10.40	<del>10.023</del>		
TP			8.41	1.613
	3.92	<del>5.533</del>		
TP			5.45	<del>0.083</del>
	6.18	<del>6.203</del>		
TP			3.71	<del>2.553</del>
	4.64	<del>7.163</del>		
TP			4.81	<del>2.353</del>
	5.64	<del>7.993</del>		
TP			5.60	<del>2.393</del>
	5.40	<del>7.793</del>		
TP			4.81	<del>2.983</del>
	5.21	<del>8.193</del>		
META TP			3.45	4.743
	3.61	<del>8.153</del>		
TP			5.37	<del>2.943</del>
	4.69	<del>7.673</del>		
TP			5.27	<del>2.403</del>

DESCRIPTION  
 PK NAIL

TBM (PAINT) EAST EDGE METABINE @ 17<sup>th</sup> CANAL - 1



PIPE CANAL - 1 = LOW CHORD LEVEL

STA	+ HI	-	ELEV.
	5.34	7.743	
TP		5.37	2.373
	4.60	6.973	
TP		4.40	2.573
	3.85	6.423	
TP		6.31	0.113
	5.55	5.663	
TP		4.02	1.643
	8.37	10.013	
TP		10.35	<del>0.289</del> <del>0.337</del> F
		<del>0.289</del> <del>0.397</del> G	
			-0.040 E
META			4.743
WLCL	5.285	<del>10.028</del>	
ELCL	10.02	10.40	<del>0.372</del>
	<del>11.02</del>	10.24	<del>0.212</del>
META	9.808	5.065	4.743 F <del>5.065</del>
			-4.743 G
			0.000 E

DESCRIPTION

TBM (PAIN) EAST EDGE OF METAIRIE  
 WEST EAST CHORD (PIPE CANAL - 1 LOW CHORD)  
 WEST CHORD  
 META CLOSE

SEE LOW CORO NEXT PAGE

STA	+	H.I.	-	ELEV.
FBM META				4.831
	5.285			
		10.40	-	.284
		10.24	-	.124
	9.75			
META		4.79		4.836

Low Camp - West end Metairie Rd Crossing  
 " " East end Metairie Rd Crossing

Pass Manhole @ Trestle Cove  
 USGS Gage Site  
 Southeastern Louisiana University  
 Experiment Station  
 ENVIRONMENTAL RESEARCH STATION  
 GPS-1 is a PK Nail set flush with  
 the top of the wooden gage  
 platform 6' NE of the gage and  
 29' North W. of an 8" oak tree.

RM-1 is a chiseled square in a  
 3' x 2' concrete slab on the north  
 side of building 23' NE of the NW  
 corner of the building 80' SE of  
 GPS-1 and 85' SE of the gage.

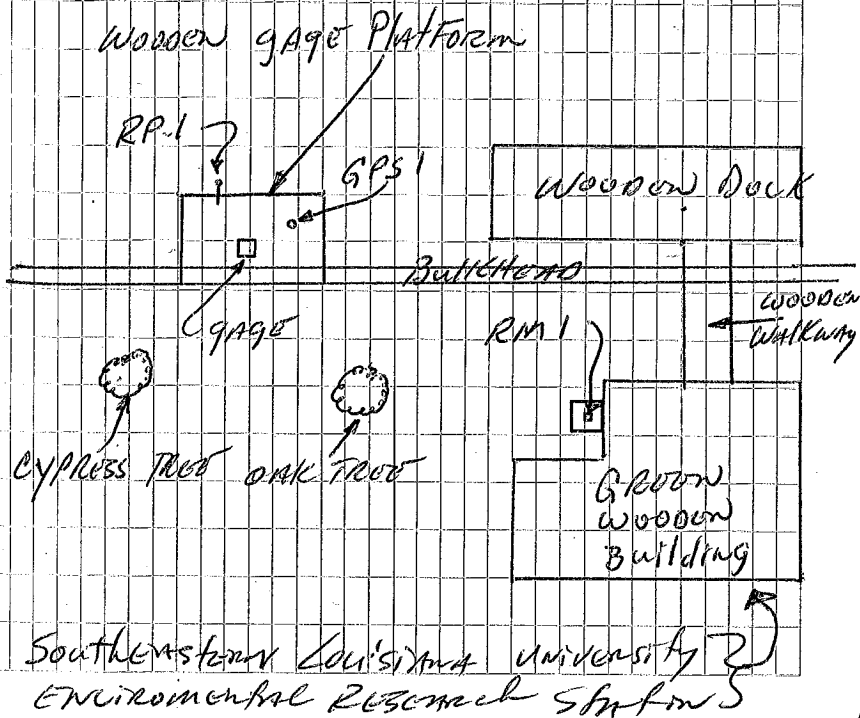
Purpus, J.  
 Webb, B.  
 Dial, M.



1-14-06

(25)

RP-1 = Lag Bolt in outside face of  
 gage platform - 0.6' below top of  
 deck of gage platform 5.6' NW of gage.  
 3.2' east of NW corner of gage  
 platform 9.5' NW of GPS-1.



1-14-06

Pass Manchaca Turtle Cove  
USGS GAGE Site  
Level Run

STA	+	Hgt.	-	Elev.
GPS-1	4.15	6.99		2.838 = 2.84
RP-1	4.85	7.26	4.58	2.41
RM-1	4.66	7.11	4.81	2.45
GPS-1			4.28	2.83 F
				2.84 B
				-0.01 E

GPS - NAIL in Dock - see sketch  
pg. 25

USGS GAGE - I-510

STA + Ht. — Elev  
 1678 A 10.016  
 (1982)

TP 3.45 13.466 9.10 4.366

W.S. 3.83 8.196 9.63 -1.434

RP1 † 1.700 6.496

TP 1.65 8.146 3.78 4.366

1678 A 9.25 13.616 3.60 10.016 F  
 1982 10.016 G  
 0.000 E

Purpura

1-15-06

(27)

webb

DINE

Johnson

= GPS Point 167A

Measure up to RP1 From water surface  
 = 1.94 = Elev 6.506 F - Given 6.496  
 2 Filled marks on top of Alumin. &  
 Iron above gage Transducer. on  
 the south side of Budge Pier  
 on I-510. First Pier North of South  
 Water Gage.

Levels - Gage at Southshore  
 MAMA

145-06

(12)

Sta	+	Hgt	-	Red.
AP#1				0.817 = 0.82
TP	5.35	6.17	4.30	1.87
TP	5.65	7.52	4.32	3.20
TP	5.83	9.03	4.49	4.54
TP	4.50	9.04	5.12	3.92
TP	5.46	9.38	3.95	5.43
TP	4.25	9.68	4.12	5.56
TP	4.16	9.72	1.39	8.33
IA	0.85	9.18	3.63	5.55
	4.15	9.70	4.28	5.42
	4.05	9.47	5.55	3.92
	5.72	9.64		

GPS

PIO - B51394

1-15-06

Levels - Cont

STA	+	H.L.	-	et al
		9.04		
TP			5.10	4.54
	4.71	9.25		
TP			6.05	3.20
	4.74	7.94		
TP			6.06	1.88
	4.55	6.43		
APd1			5.61	10.82
				<del>9.02</del>
				5.00

1-15-06

BM-1A to GAGE Site

South Shore Marina

STA	+ A.L.	- Elev.	
BM-1A			8.33
TP	3.23	11.56	4.14 7.12
TP	6.13	13.55	8.27 5.28
RP-A	5.29	10.57	6.15 <span style="border: 1px solid black; padding: 2px;">7.42</span>
STAFF GAGE	3.44	7.86	8.65 <span style="border: 1px solid black; padding: 2px;">-0.79</span> <sup>0.00</sup> / <sub>9.19</sub>
RP-A	8.60	7.81	3.39 4.42
RP-A			4.42
TP	6.03	10.45	5.18 5.27
TP	8.58	13.85	6.45 7.40
IA	4.55	11.95	3.64 8.31 F 8.33 G 0.00

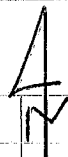
PSD 1394

RP-A is a R/R spike driven flush with the concrete, 1" west of the E of the south end of a concrete curb, 8.4' North of the E of a wooden Dock (bearing east, 50' west of gage.

WOODEN STAFF GAGE SET ON A CLUSTER OF 3 WOODEN PILING - 50' EAST OF RP-A, ORIENTED LEVEL DISTANT GAGE. THE SHOTS - 8.65 & 8.60 WERE ACTUALLY READINGS ON THE GAGE 0.00 OF THE GAGE IS ACTUALLY -0.79

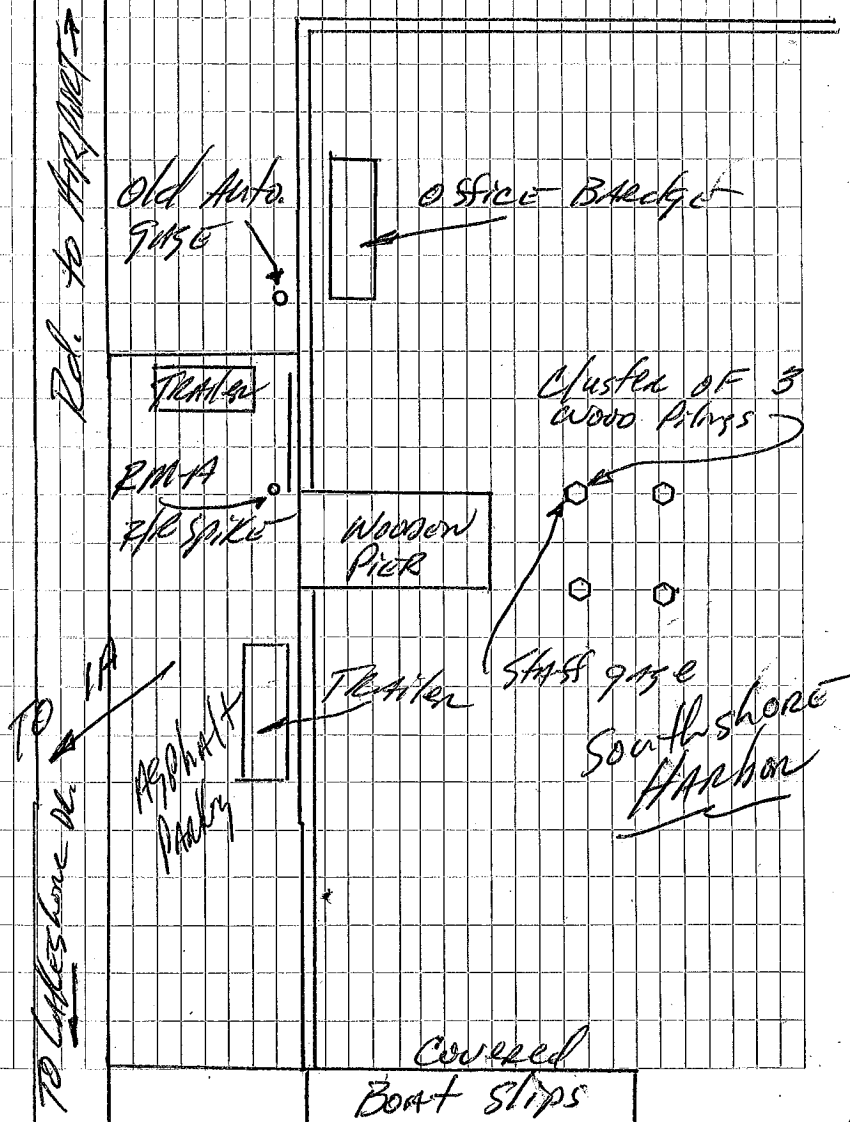


Sketch  
Southshore Marina Base



1-15-06 (31)

Peninsula



Low Corro @ OP#6 - R/R Bridge

1-15-06

Sta	f	H.L.	-	Elev
OP#6				-0.289 = -0.29
	9.56	9.27		
TP			4.89	4.38
	11.00	15.38		
Top Conc Wall - North side			1.99	13.39
Low Corro			9.92	5.46
	10.55	16.01		
TP			11.63	4.38
	9.14	13.52		
OP#6			13.81	-0.29 F
				-0.29 G
				0.00 E

PK NAIL - ASPHALT PARKING LOT OF OP#6  
PUMP STATION

Top Conc Wall North side, OP#6  
Low Corro - R/R Bridge - 175st Canal - 2.

High Water Mark, Suway - Section 3.  
of Scope