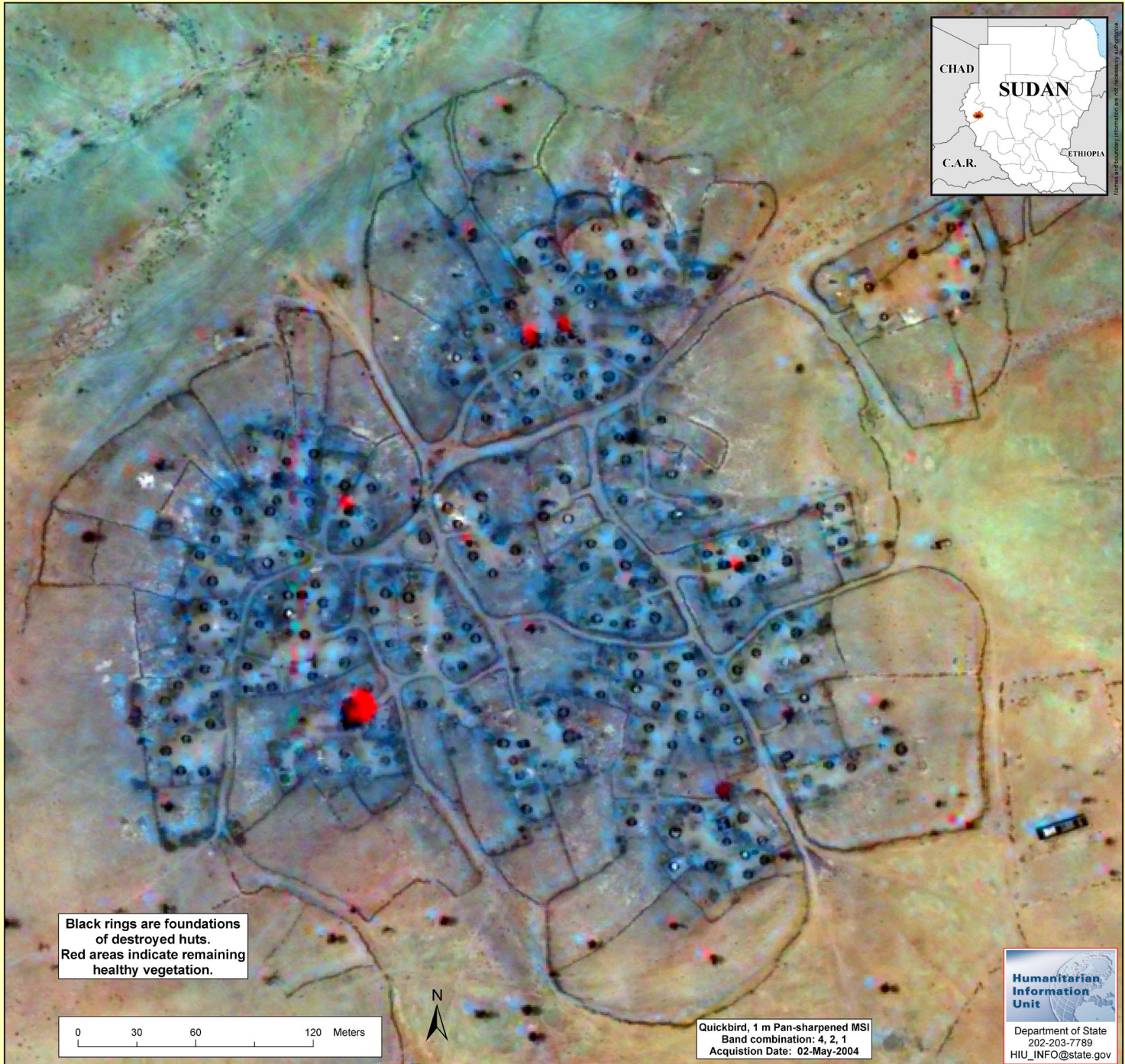


June 21, 2004

# Destroyed Village near Shataya (206 structures destroyed)

© COPYRIGHT 2004 DigitalGlobe, Inc. (All Rights Reserved.)  
 DigitalGlobe and the DigitalGlobe logos are trademarks of DigitalGlobe, Inc. The use  
 and/or dissemination of this data and/or of any product in any way derived there from  
 are restricted. Unauthorized use and/or dissemination is prohibited.  
 License Tier: USG ClearView License Agreement with NGA  
 Source: Quickbird, 1 m Pan-sharpened MSI



Black rings are foundations  
 of destroyed huts.  
 Red areas indicate remaining  
 healthy vegetation.

0 30 60 120 Meters



Quickbird, 1 m Pan-sharpened MSI  
 Band combination: 4, 2, 1  
 Acquisition Date: 02-May-2004



Department of State  
 202-203-7789  
 HIU\_INFO@state.gov