

Speeding: Who, When, Where

Richard P. Compton
Director

Office of Research and Technology
National Highway Traffic Safety Administration

June 15, 2005

Overview and Data Sources

- **Speeding-Related Fatal Crashes**
 - ◆ Data: FARS 1983-2003
 - ◆ Analyses:
 - Number, Percent, Rates
 - Where, When, Who
- **Self-Reported Attitudes and Behaviors**
 - ◆ Data: NHTSA Survey 2002

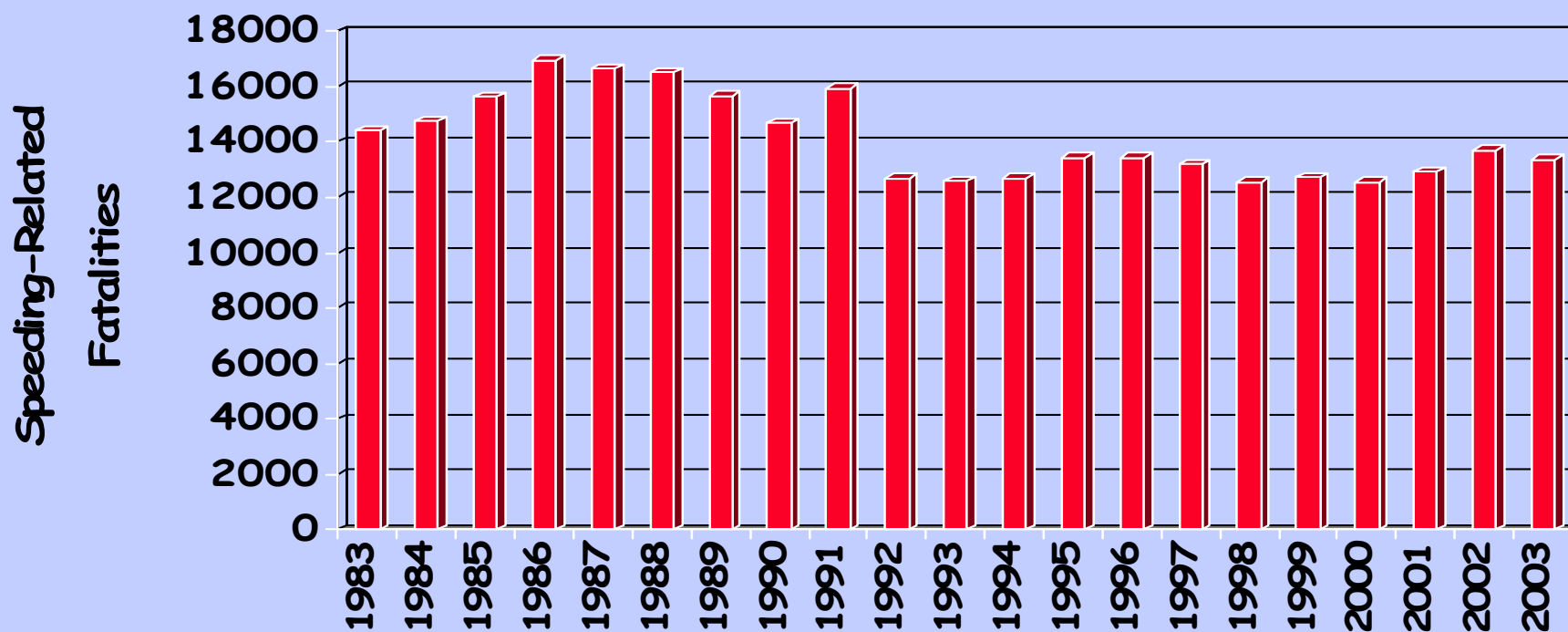
Definition

- NHTSA considers a crash to be speeding-related if:
 - ◆ Driver **charged** with a speeding-related offense, or
 - ◆ Officer indicated that **racing, driving too fast for conditions, or exceeding the posted speed** was a contributing factor in the crash

Facts

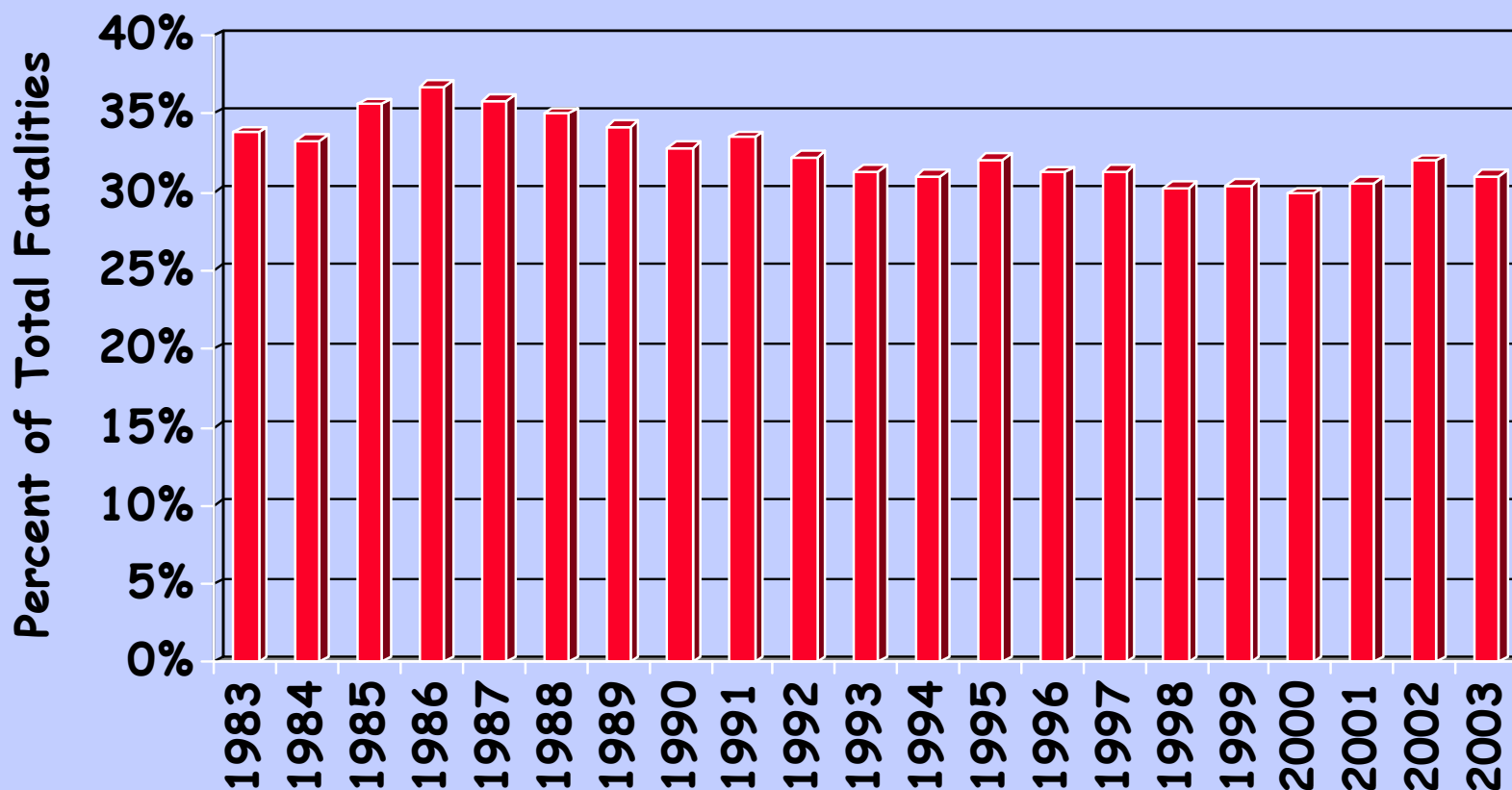
- Speeding is one of the most prevalent contributing factors to traffic crashes
- **12%** of all Reported Crashes (2003)
- **31%** of all Fatal Crashes (2003)
- **13,380** lives lost in speeding-related crashes (2003)
- **\$40.4** Billion per Year

Speeding-Related Fatalities (1983-2003)



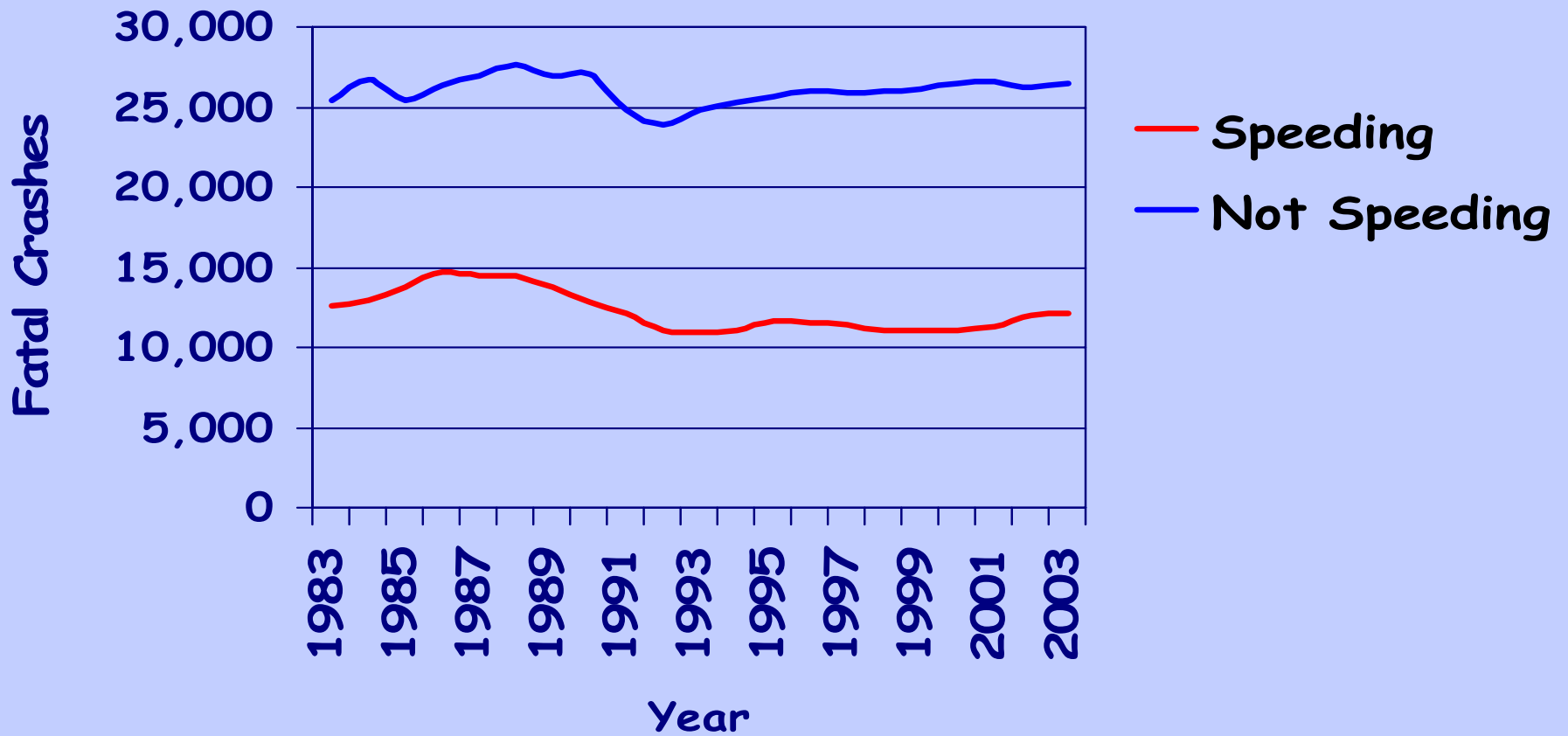
Source: FARS Final 1983 - 2002, 2003 ARF

Speeding-Related Fatalities as Percent of Total Fatalities (1983-2003)



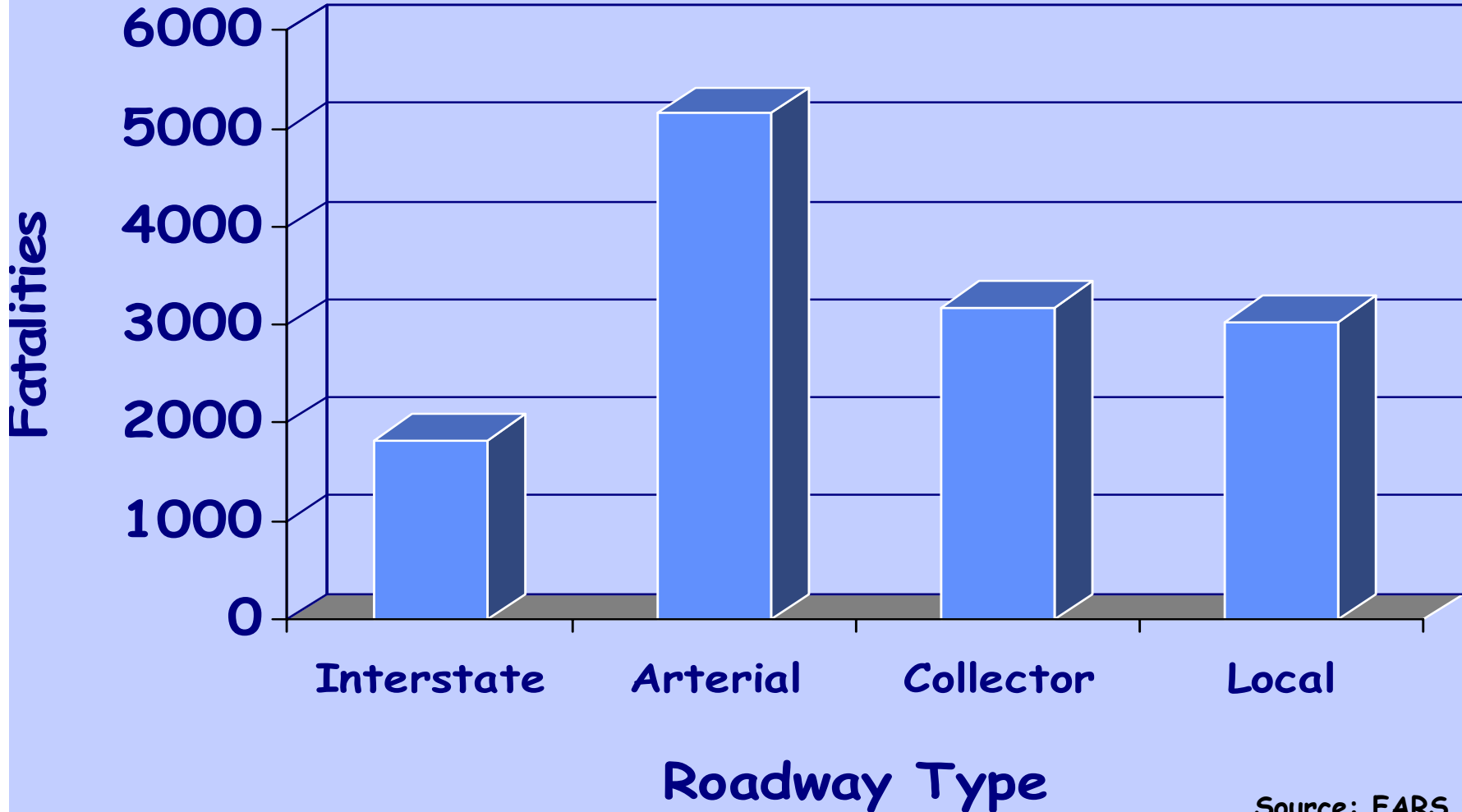
Source: FARS 1983 - 2003

Fatal Crashes by Speeding Status (1983 - 2003)



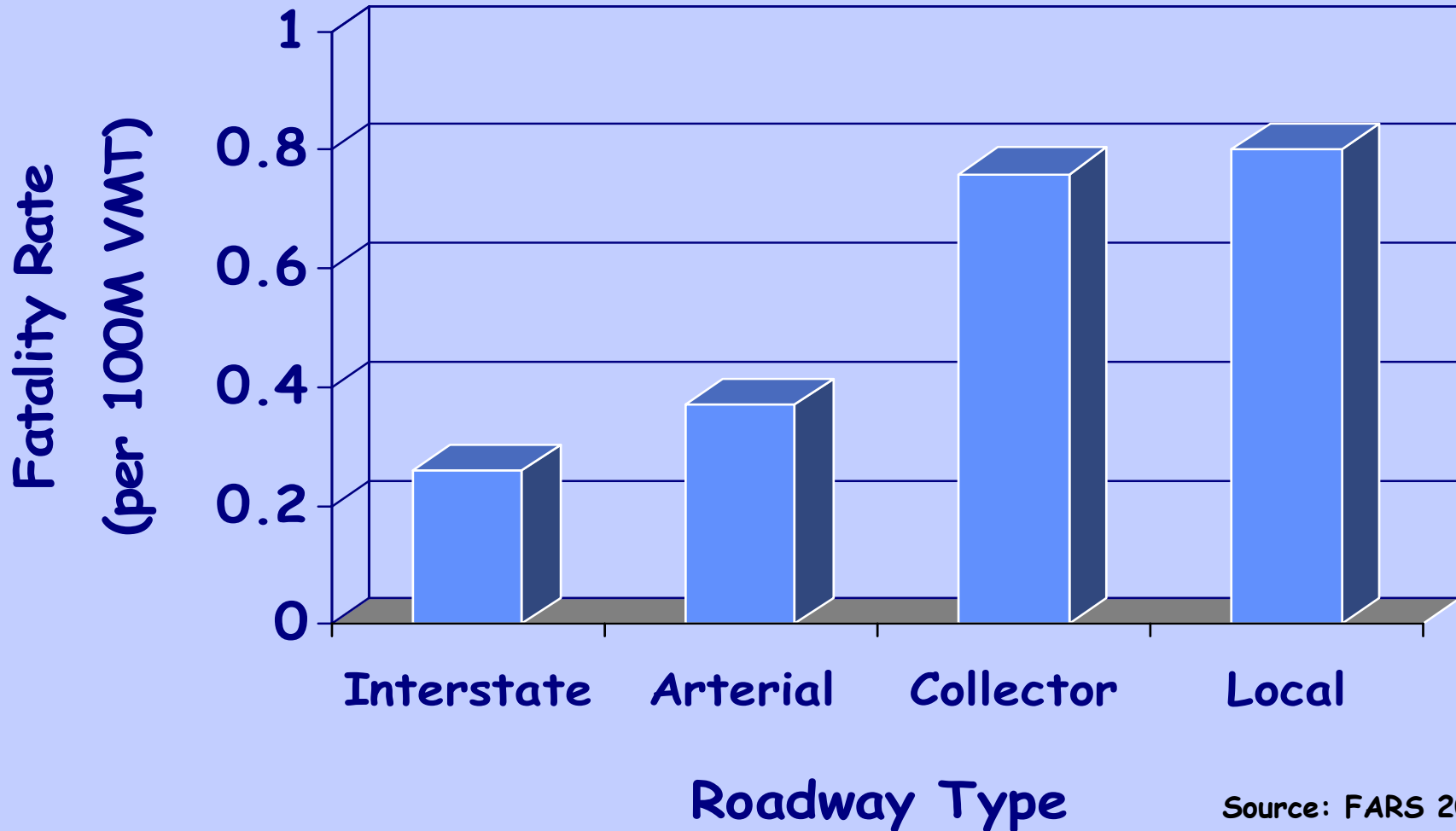
FARS 1993- 2003

Speeding-Related Fatalities by Roadway Type (2003)



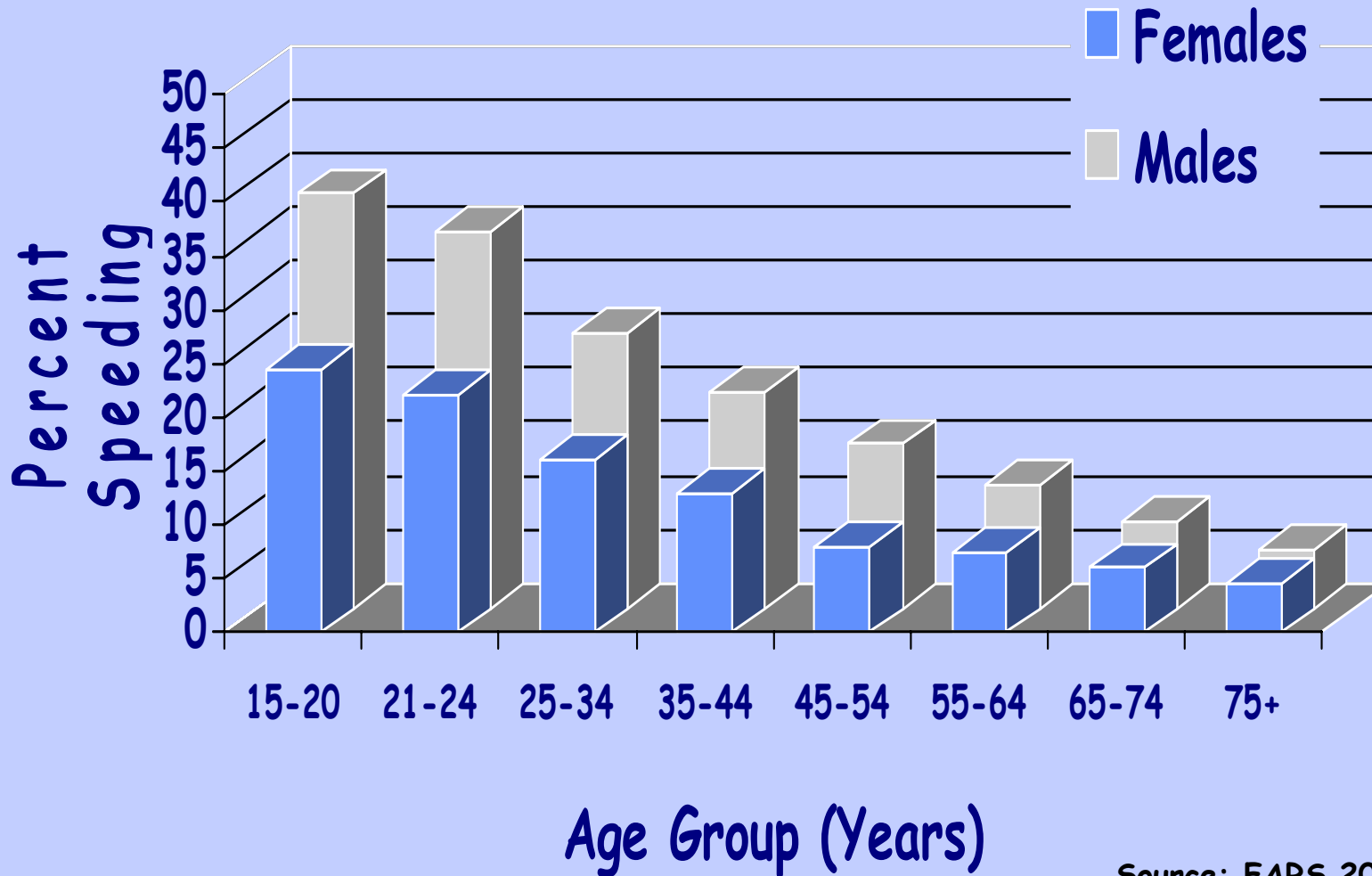
Source: FARS 2003

Speeding Fatality Rate by Roadway Type (2003)



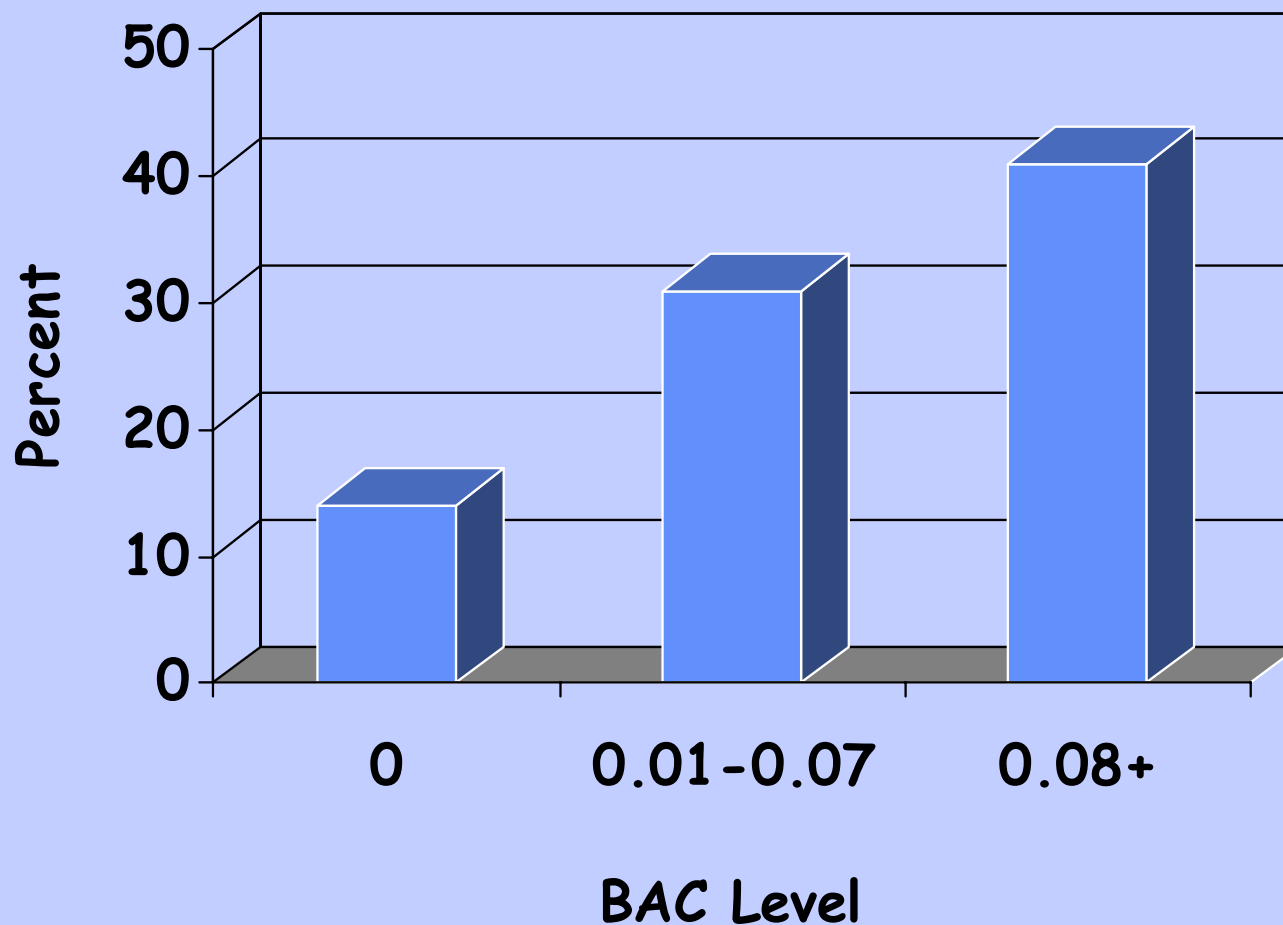
Source: FARS 2003

Speeding Drivers in Fatal Crashes by Age and Gender (2003)



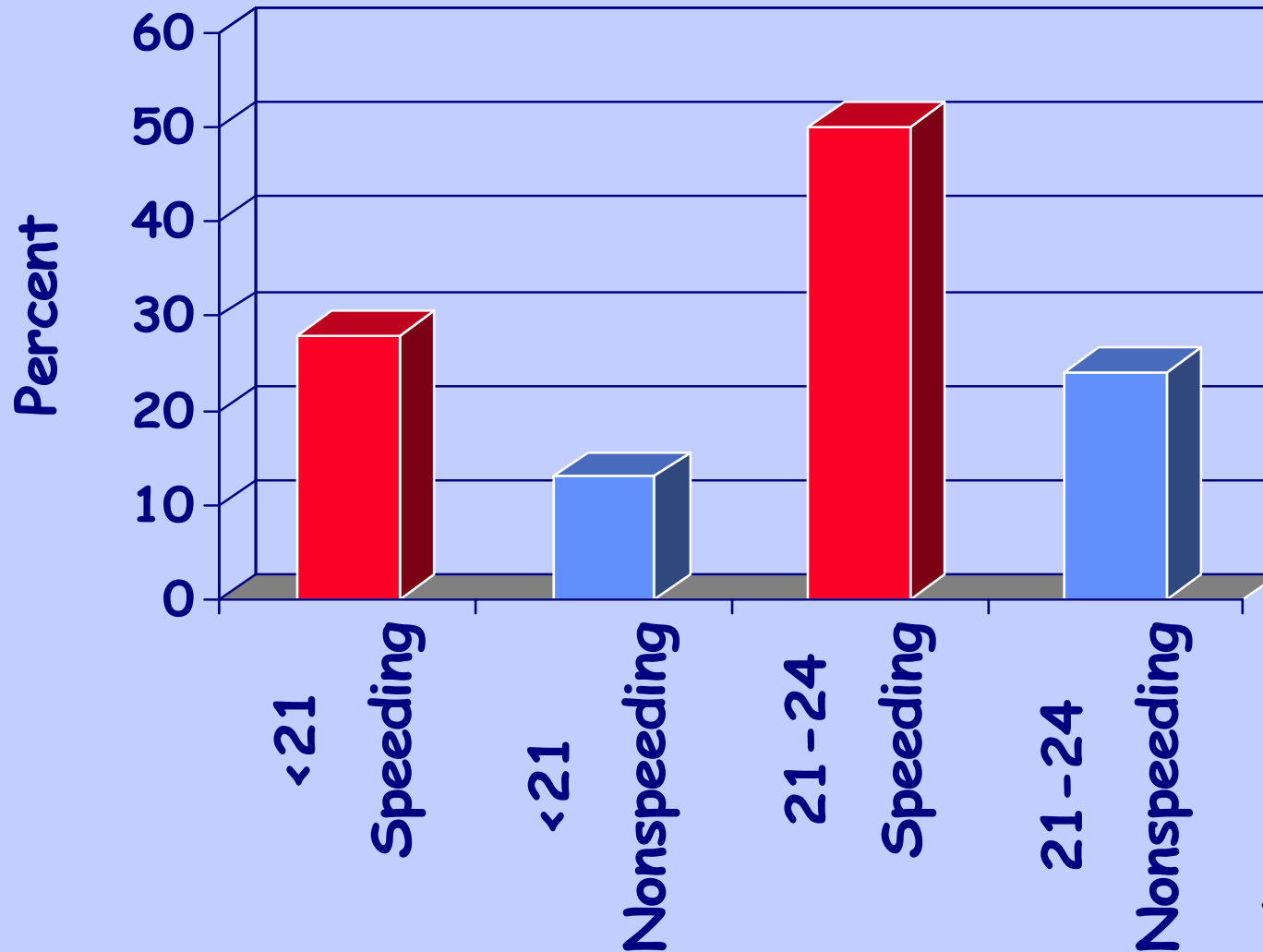
Source: FARS 2003

Percentage of Speeding Drivers by BAC Level (2003)



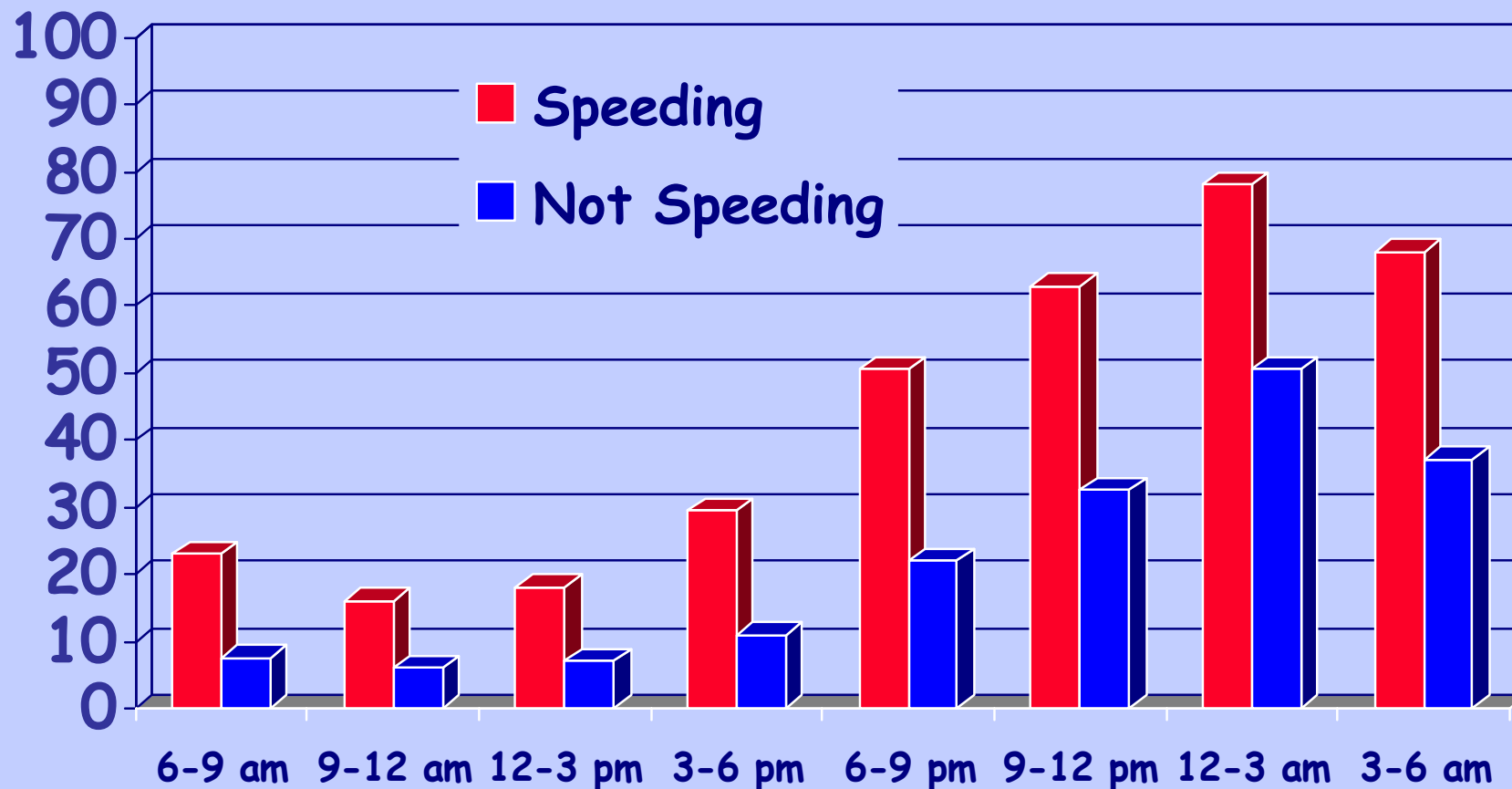
Source: FARS 2003

Percent BAC 0.08+ by Speeding and Age (2003)



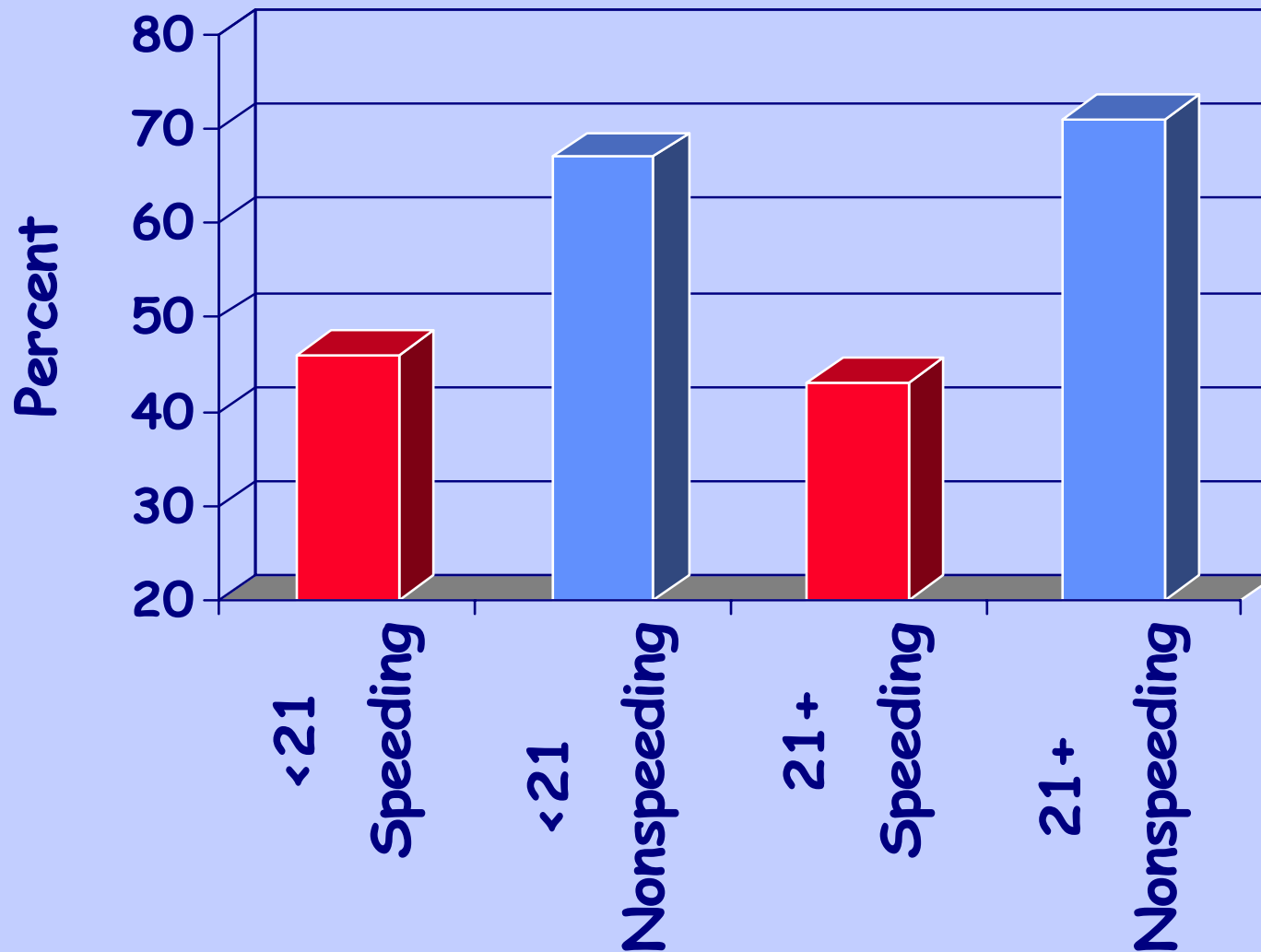
Source: FARS 2003

Drivers Alcohol Involvement, Speeding Status and Time of Day (2003)



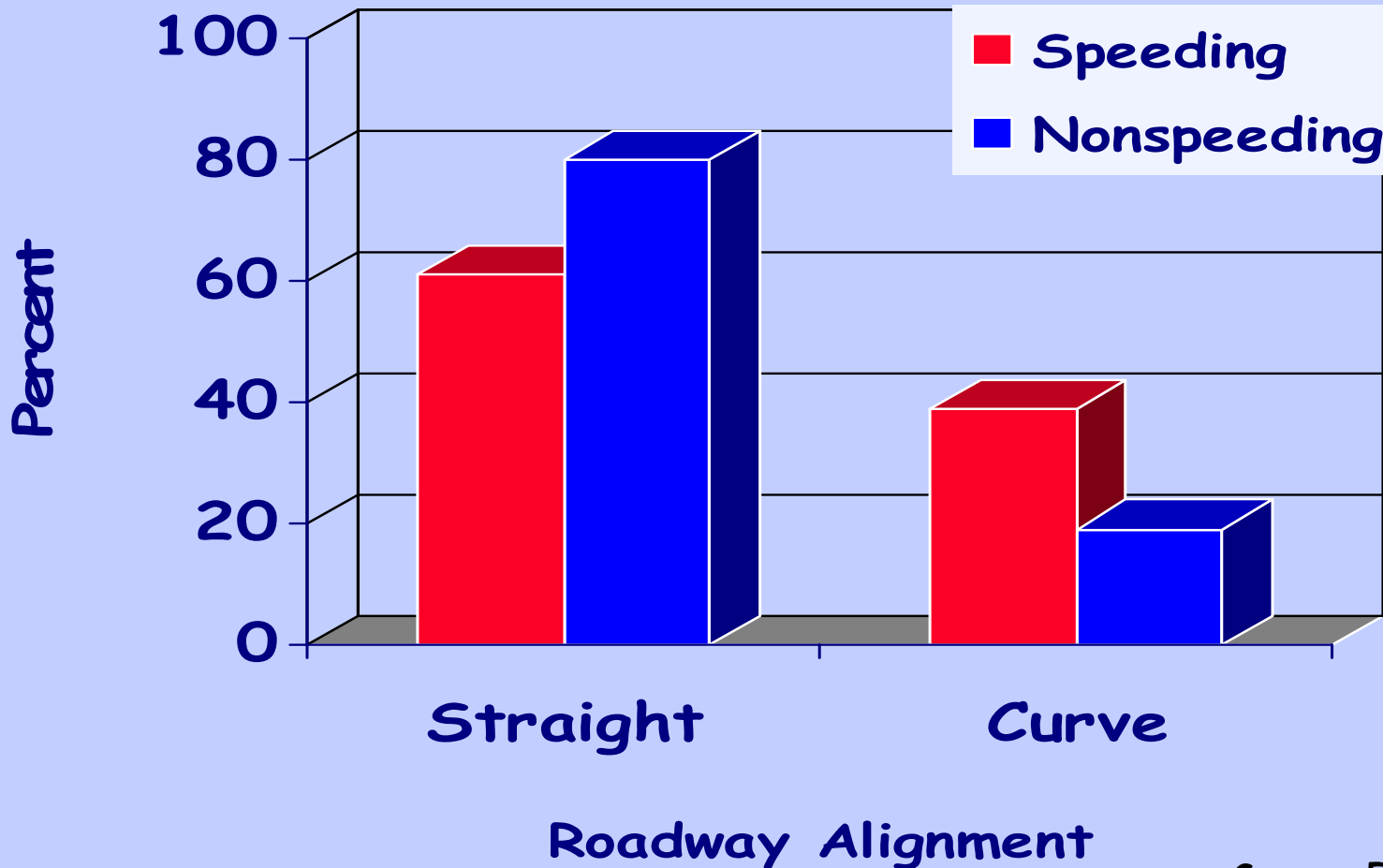
Source: FARS 2003

Percent Restraint Use by Speeding and Age (2003)



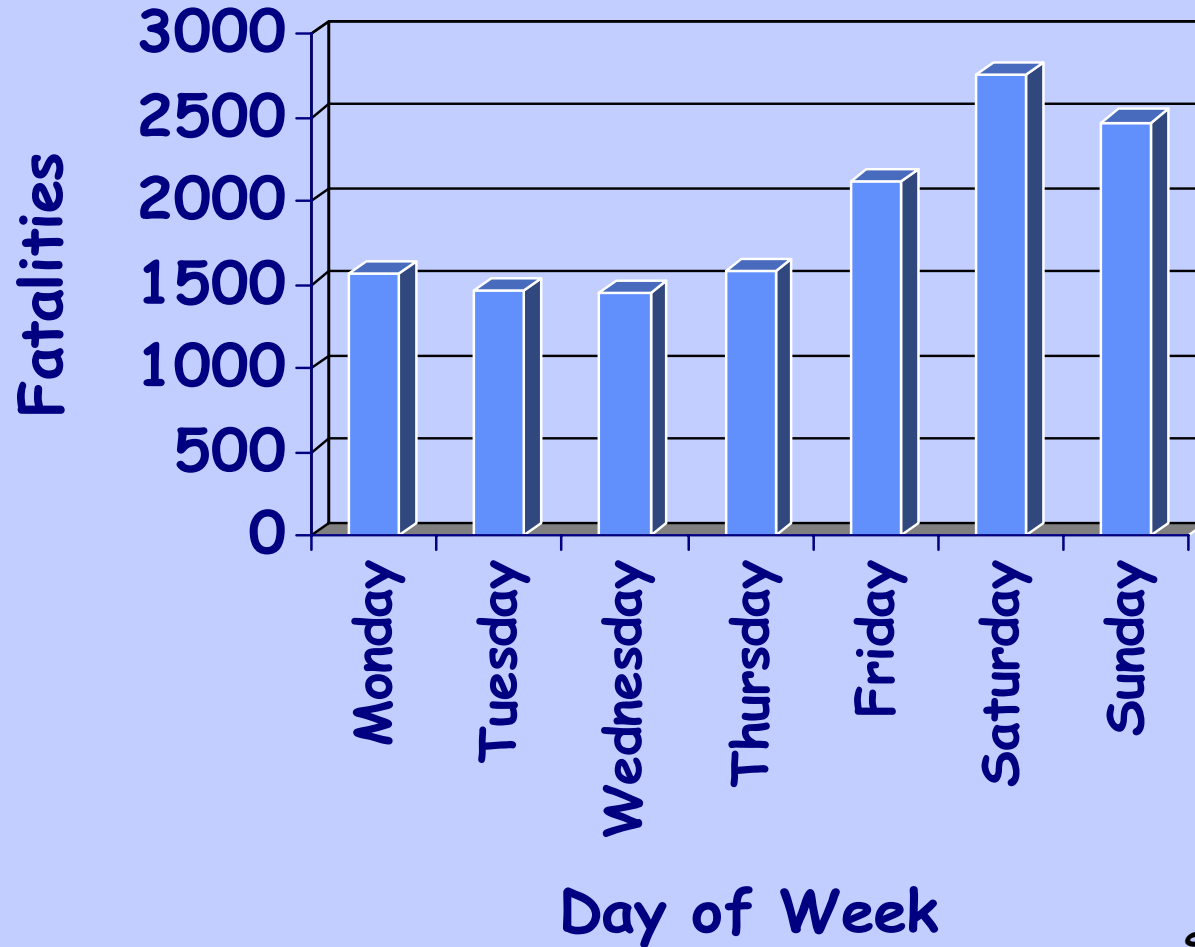
Source: FARS 2003

Percentage of Speeding Drivers by Roadway Alignment (2003)



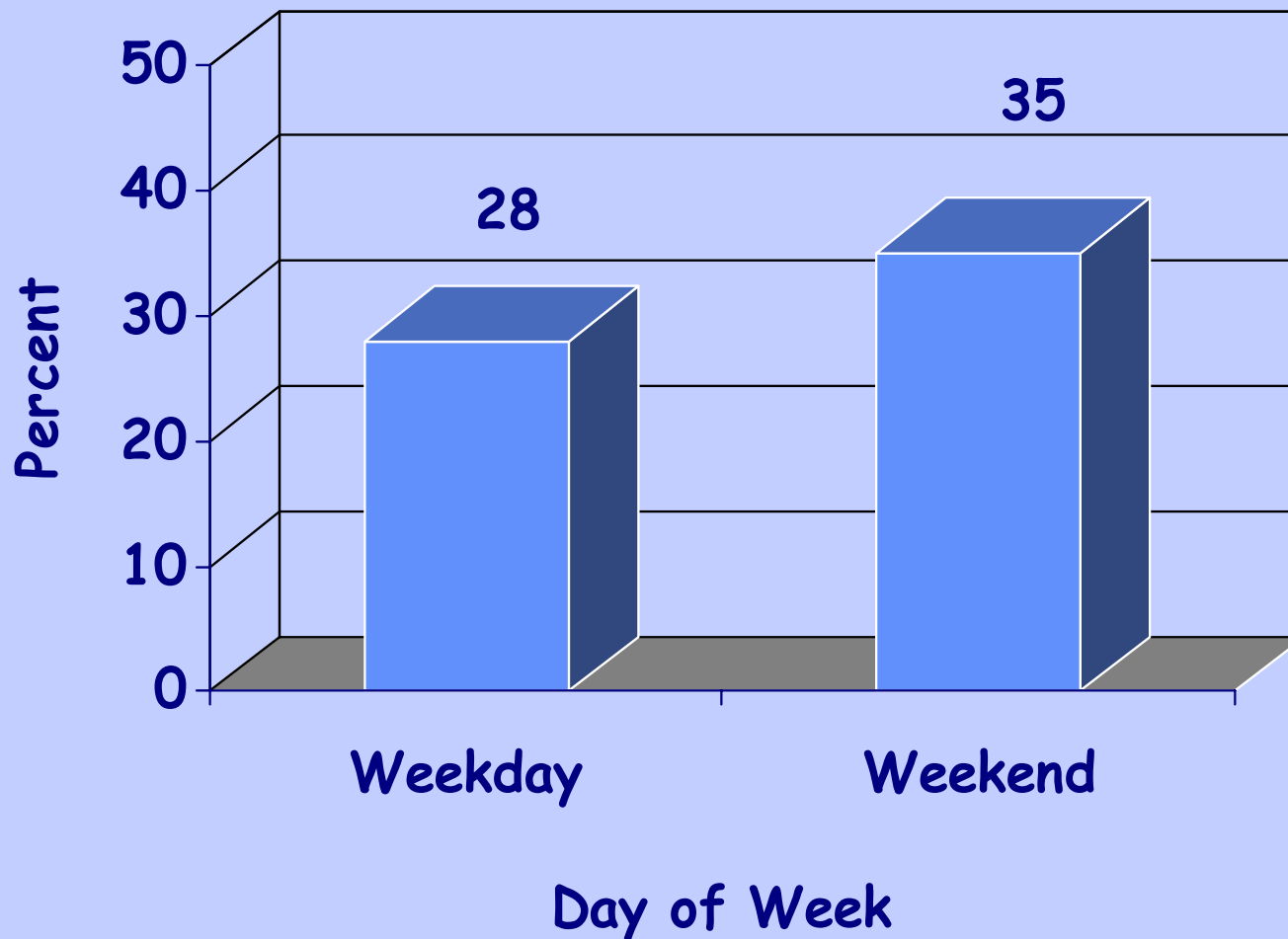
Source: FARS 2003

Speeding-Related Fatalities by Day of Week (2003)



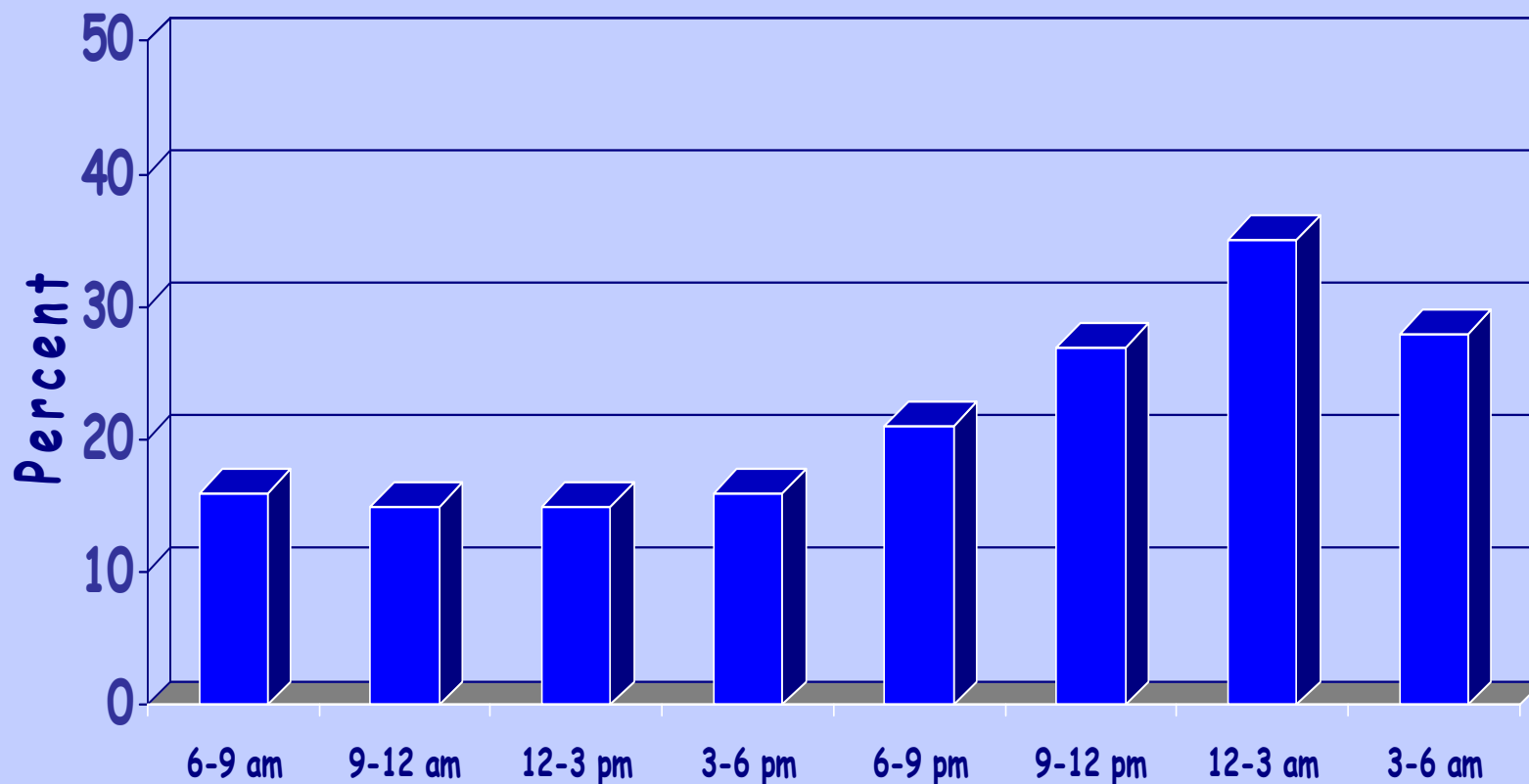
Source: FARS 2003

Percentage of Speeding Drivers by Day of Week (2003)



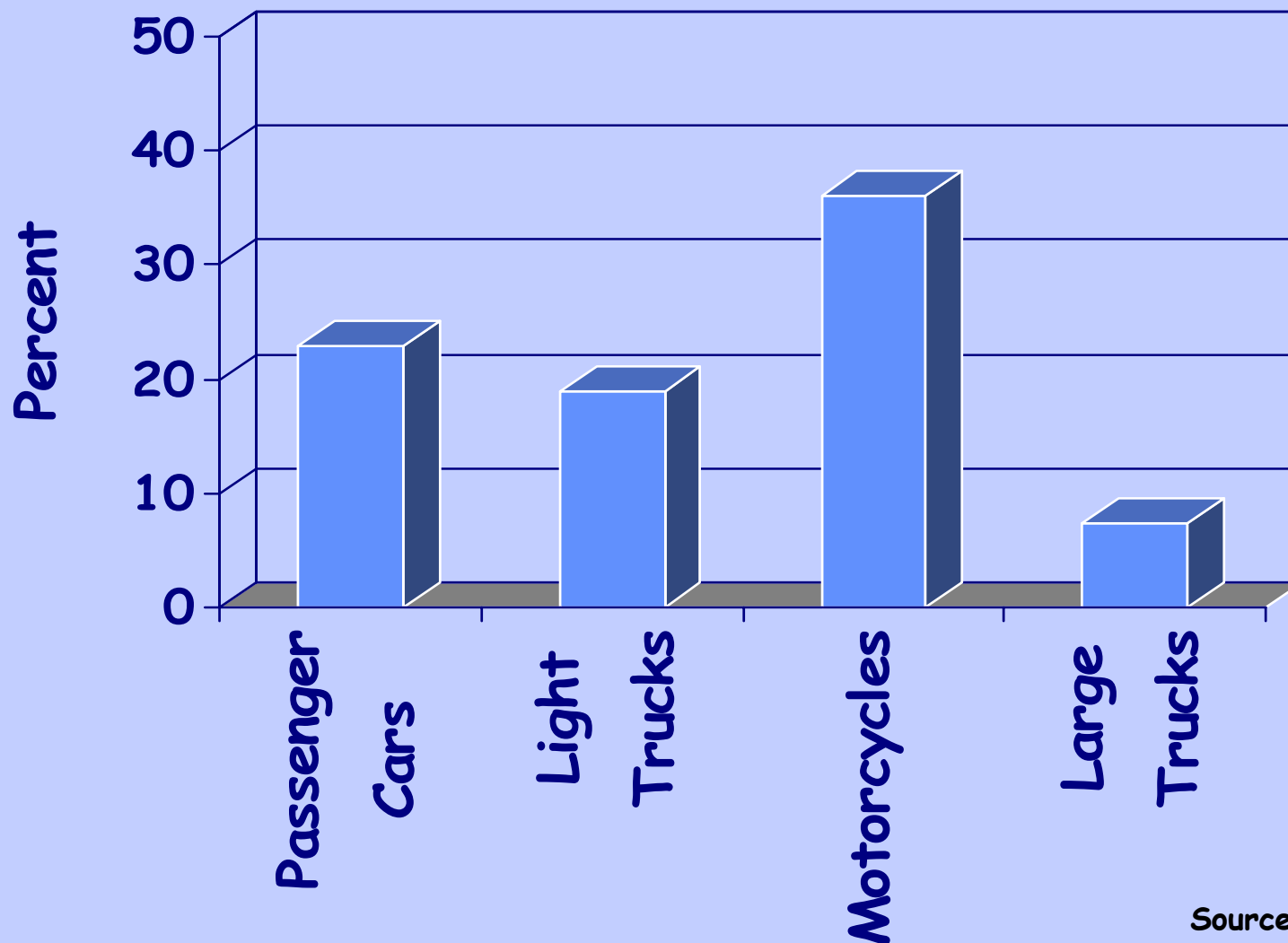
Source: FARS 2003

Percent Speeding Drivers by Time of Day (2003)



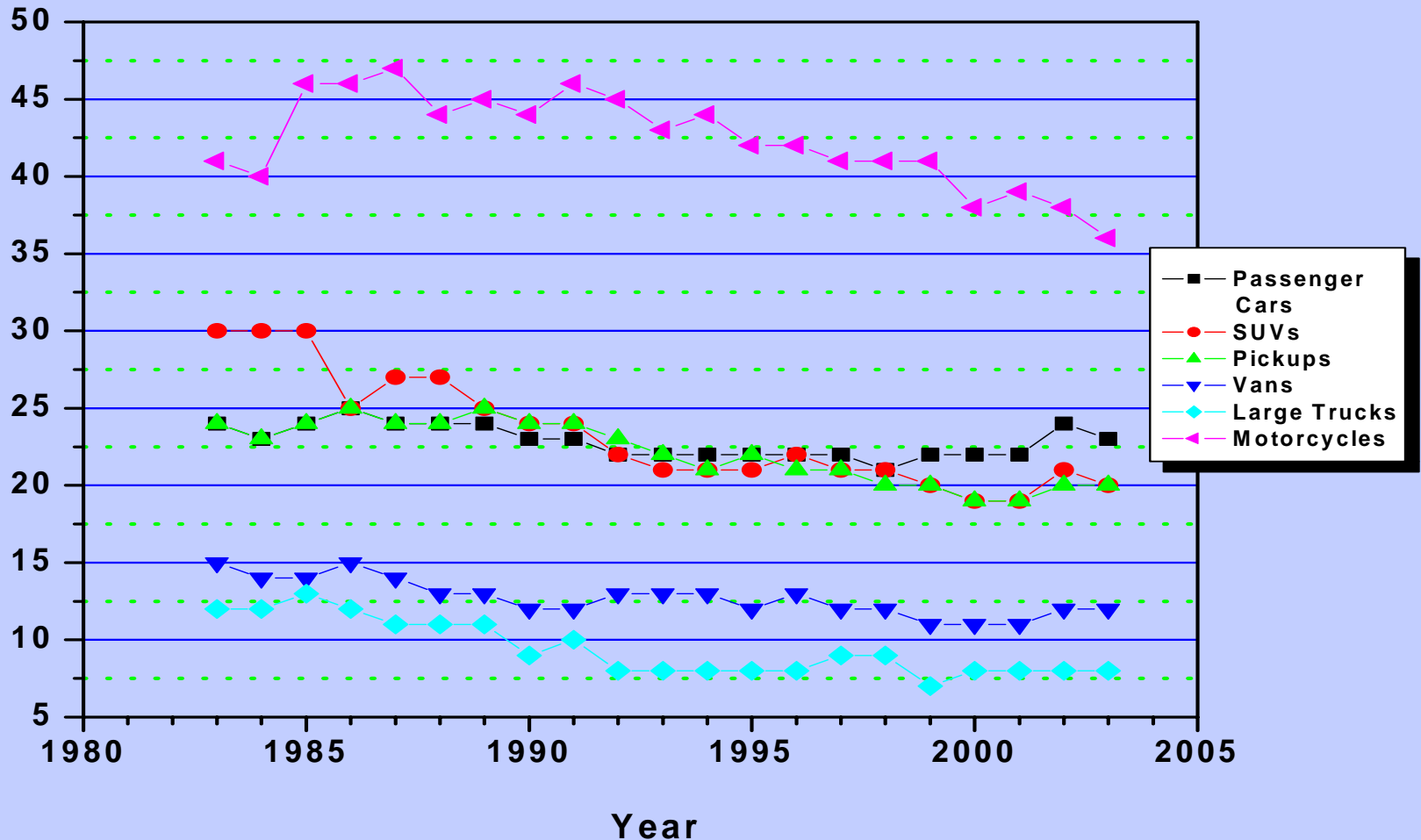
Source: FARS 2003

Percent Speeding by Vehicle Type (2003)



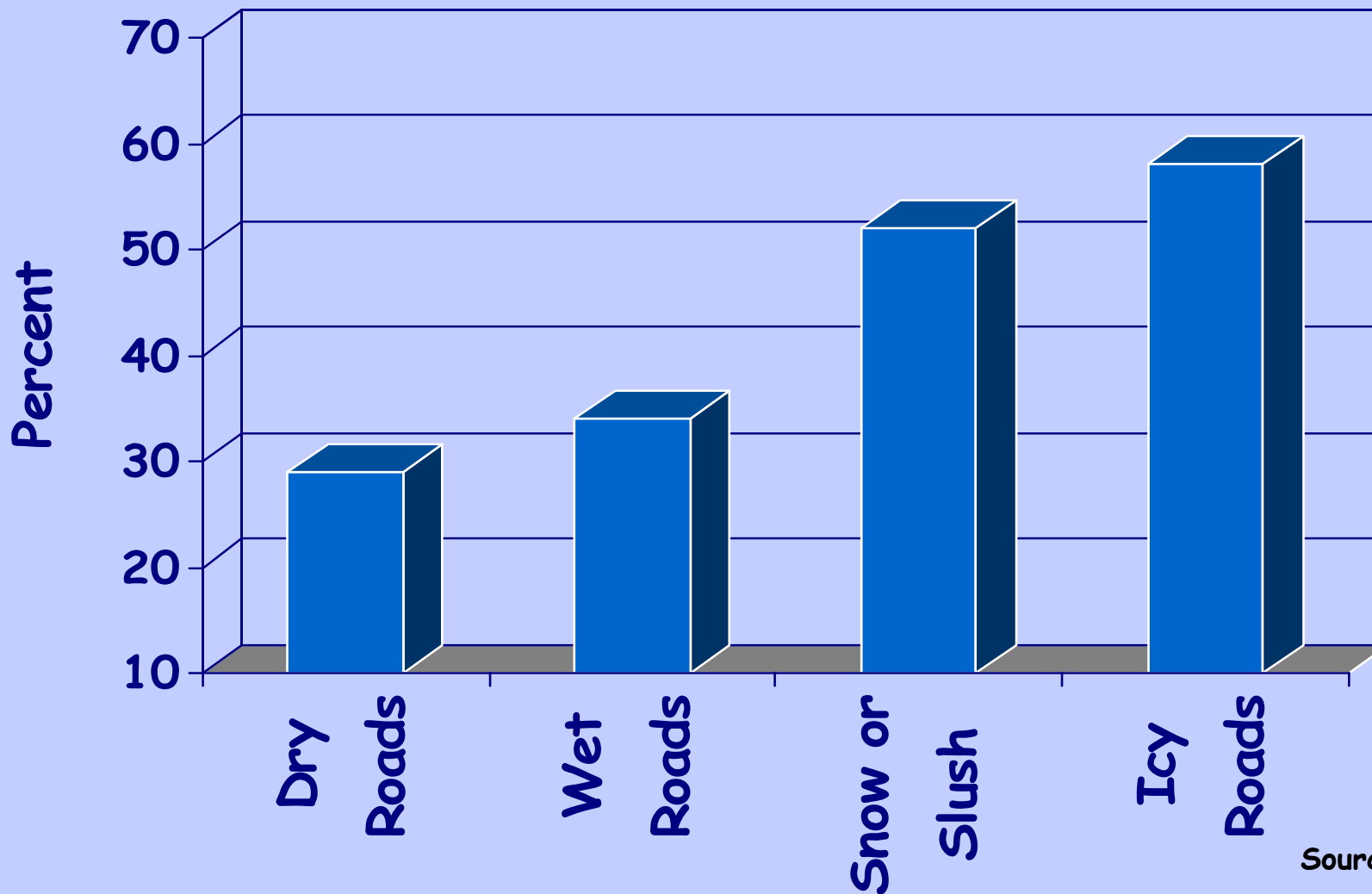
Source: FARS 2003

Trend in Percent Speeding by Vehicle Type (1983-2003)



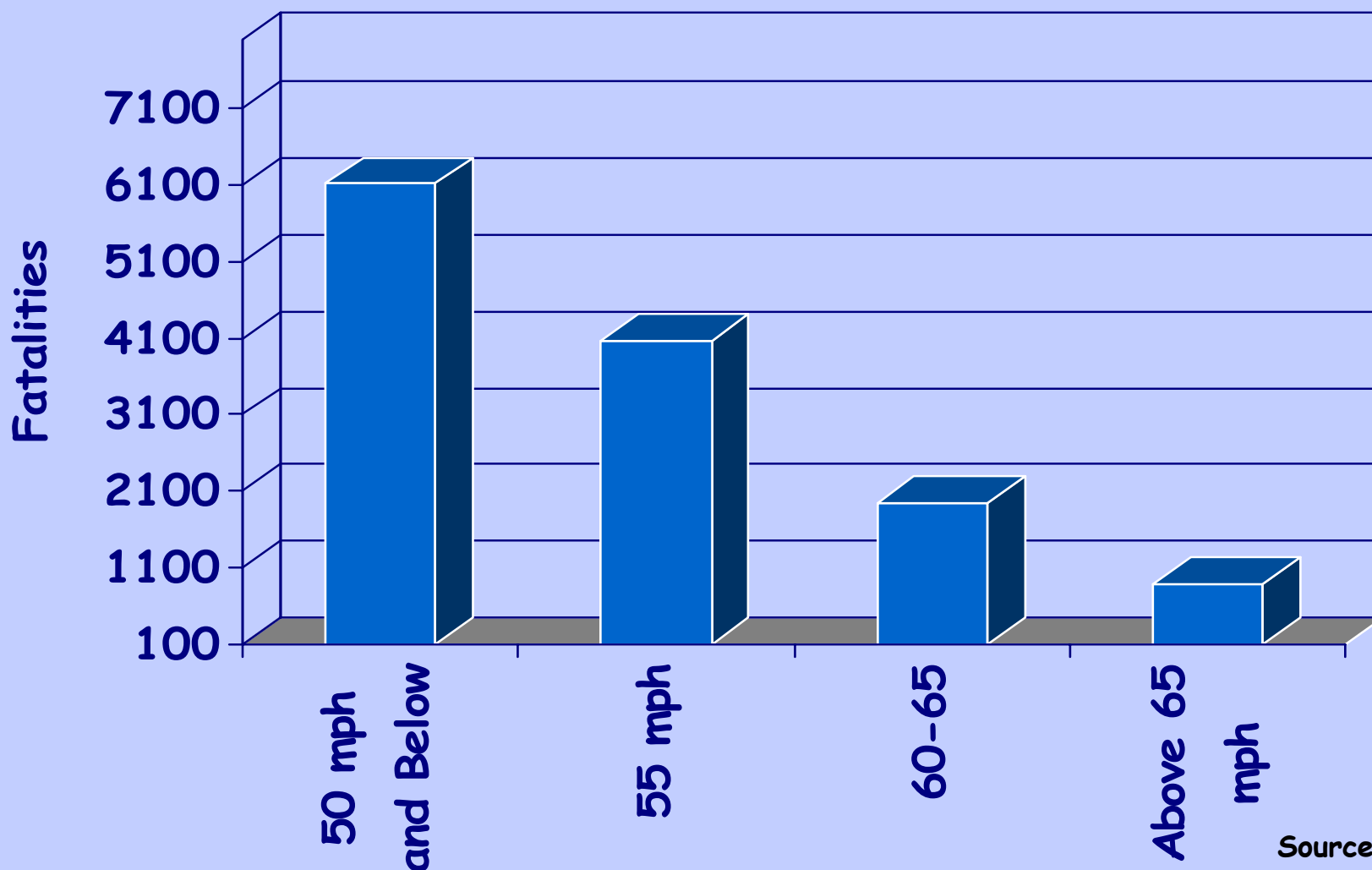
Source: FARS 1983-2003

Percent Speeding by Roadway Conditions (2003)



Source: FARS 2003

Speeding-Related Fatalities by Speed Limit (2003)



Source: FARS 2003

Public Attitudes and Behaviors Regarding Speeding

- NHTSA conducted a study of the driving public's attitudes and behaviors regarding speeding
 - ◆ 1997
 - ◆ 2002
- Characteristics of drivers who speed and commit other unsafe driving actions

Purpose

- Obtain public views on unsafe driving actions
- Covered attitudes toward speeding, unsafe and aggressive driving
- Conditions associated with speeding and unsafe driving
- Support for various different types of countermeasures

Approach

- Nationally representative telephone survey
- 4,010 drivers 16 years old and older
- February 4 - April 14, 2002

Self-Reported Speeding Behavior by Roadway Type

QUESTION:

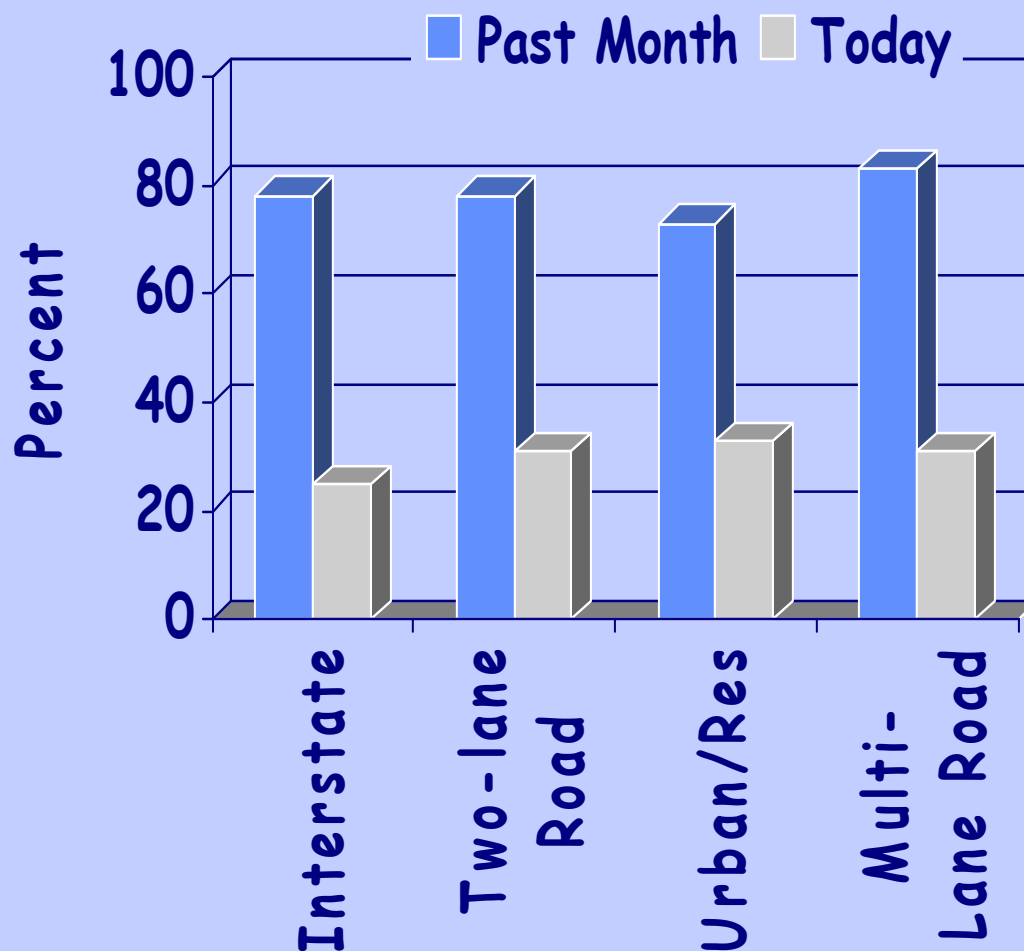
When was the last time you drove over the speed limit on a:

- Multi-lane interstate highway
- Two-lane road
- City, town or neighborhood street
- Non-interstate multi-lane road

RESPONSE:

- Today
- Within past week
- With past month
- Within past year
- Never

Self-Reported Speeding Behavior by Roadway Type



Source: National Survey 2002

Frequency and Type of Self-Reported Speeding Behavior

QUESTION:

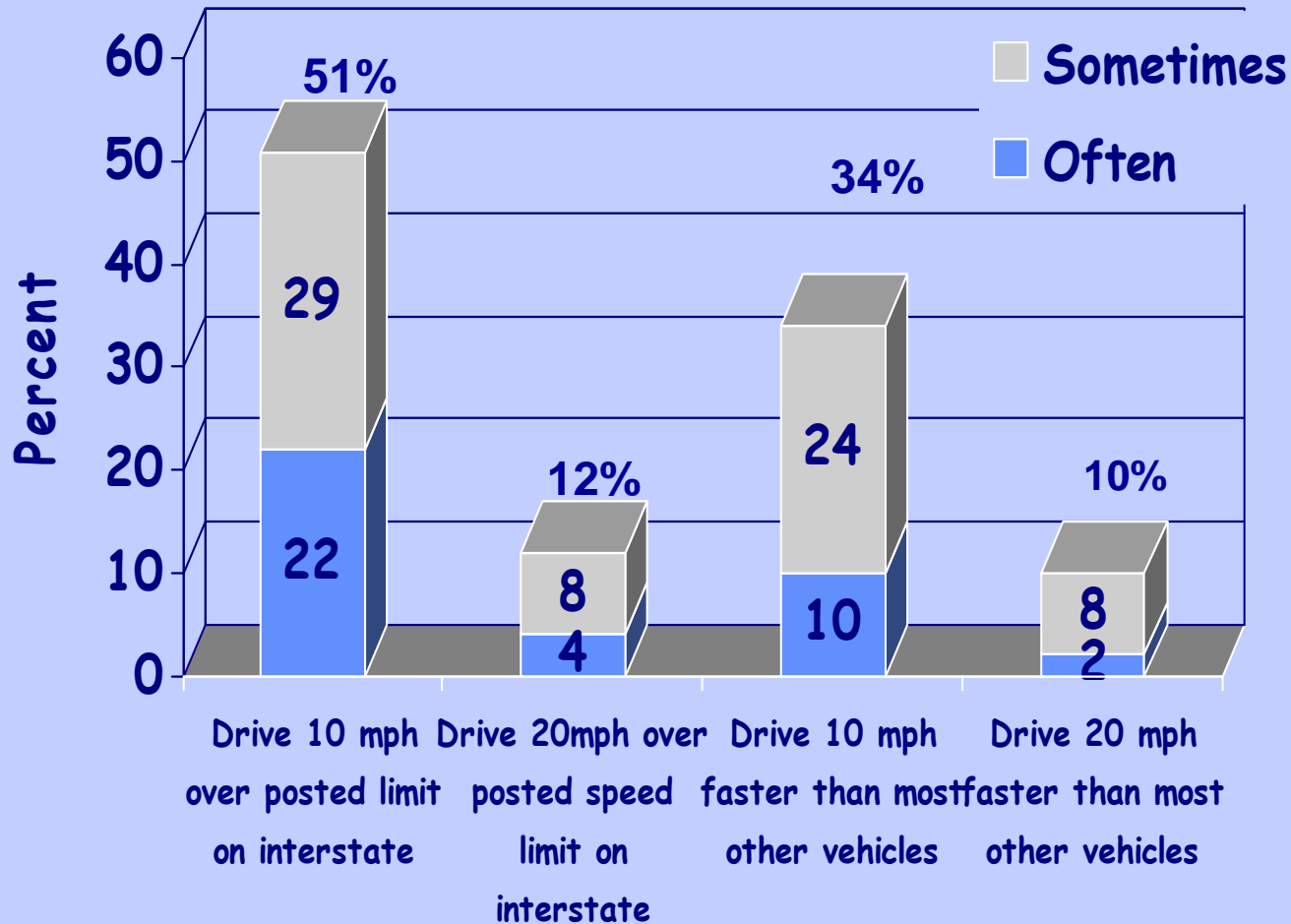
How often do you:

- Drive 10 mph over the posted limit on an multi-lane interstate highway?
- Drive 20 mph over the posted limit on an multi-lane interstate highway?
- Drive 10 mph faster than most other vehicles?
- Drive 20 mph faster than most other vehicles?

RESPONSE:

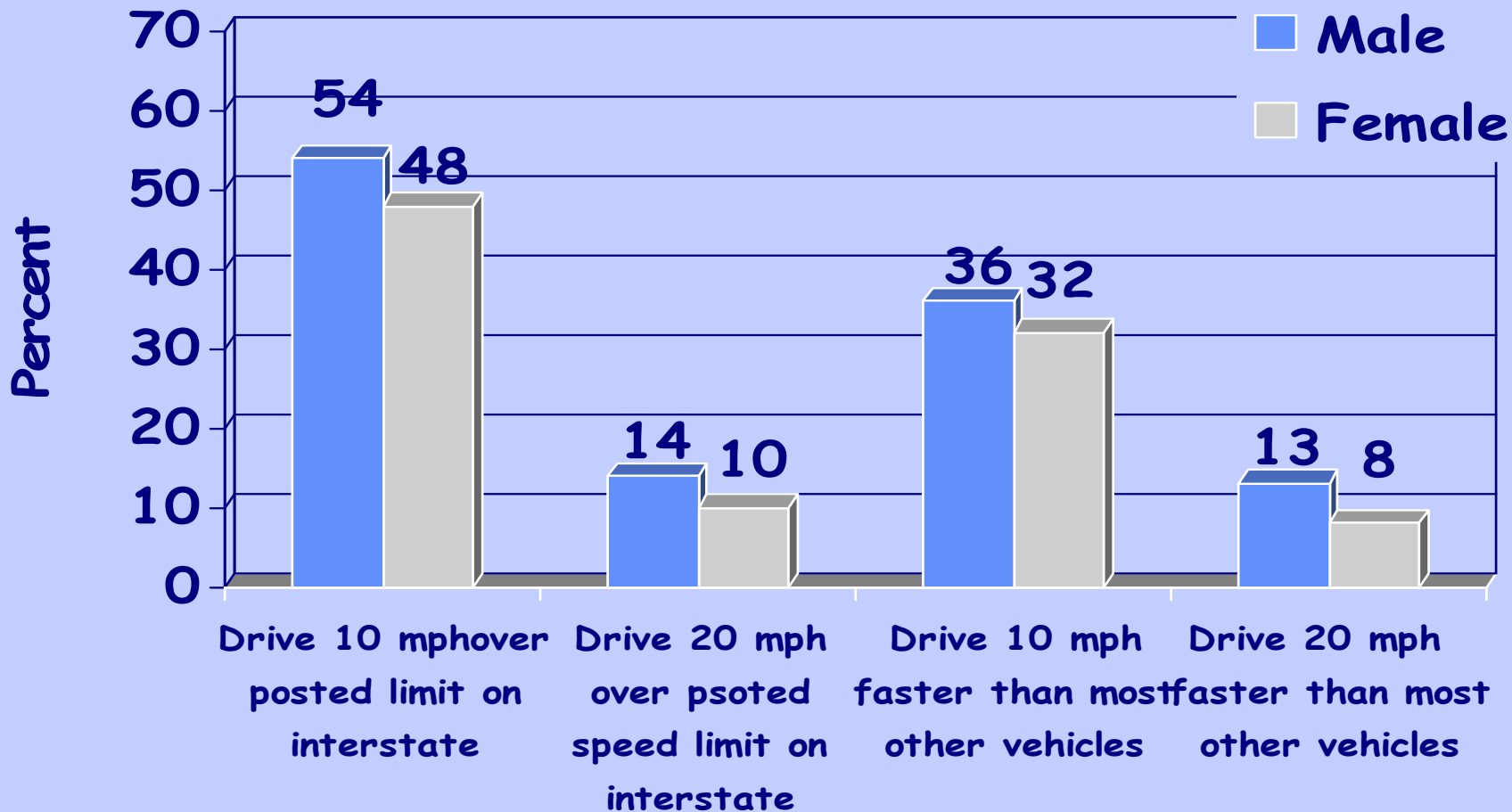
- Often
- Occasionally
- Never
- Sometimes
- Rarely

Frequency of Speeding Behaviors



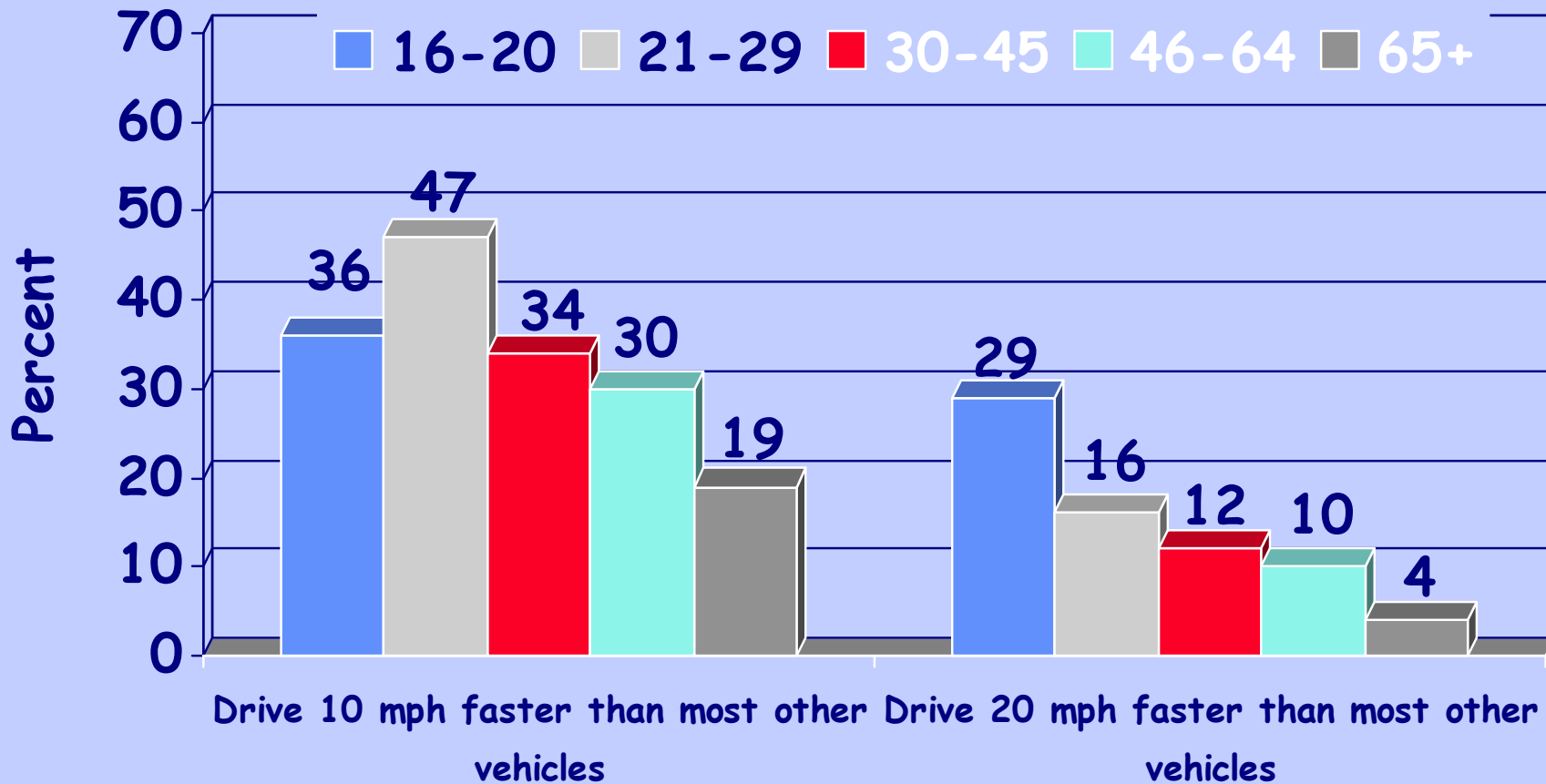
Source: National Survey 2002

Frequency of Speeding Behaviors by Gender



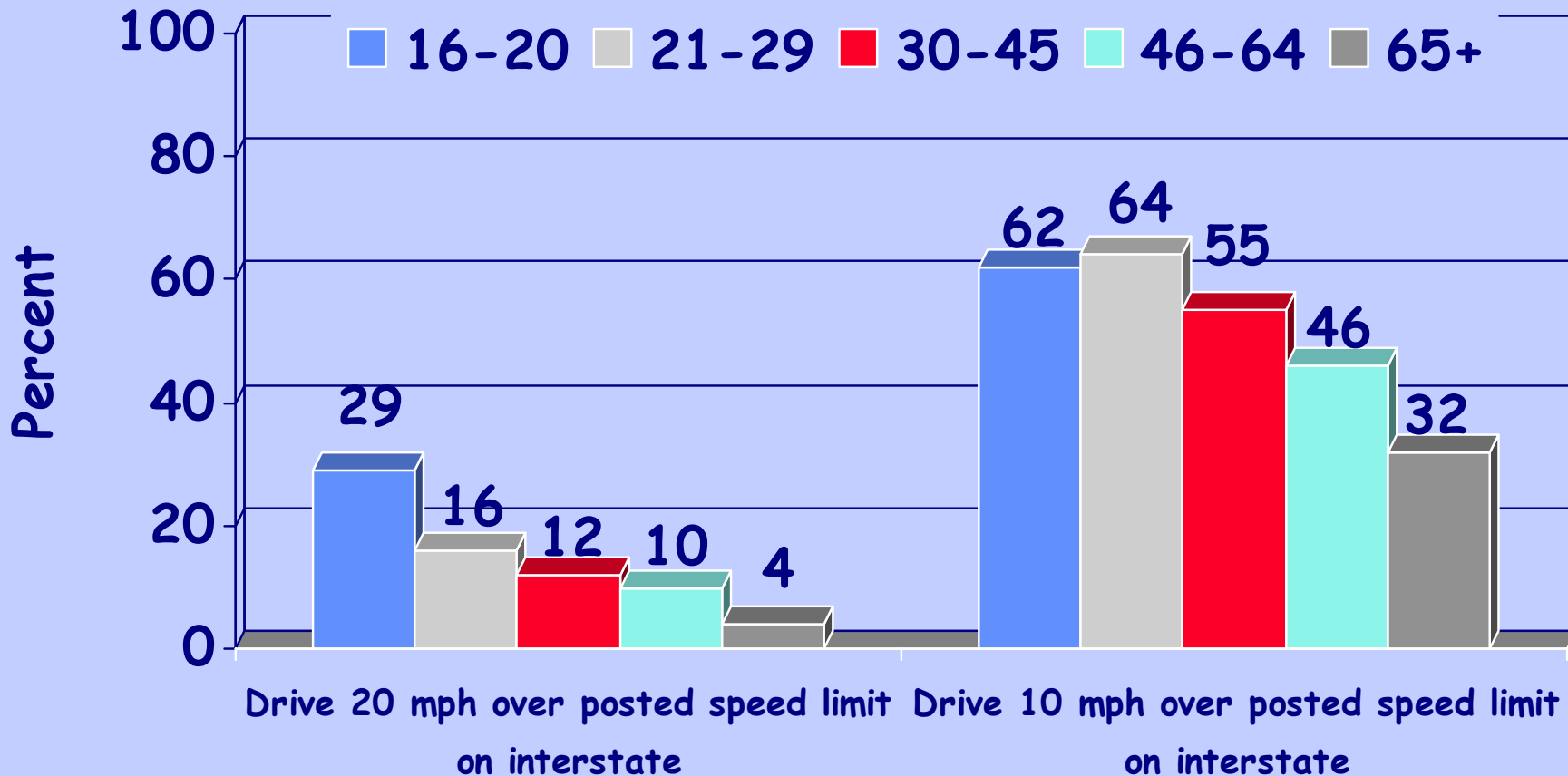
Source: National Survey 2002

Frequency of Speeding Behaviors by Age



Source: National Survey 2002

Frequency of Speeding Behaviors by Age



Source: National Survey 2002

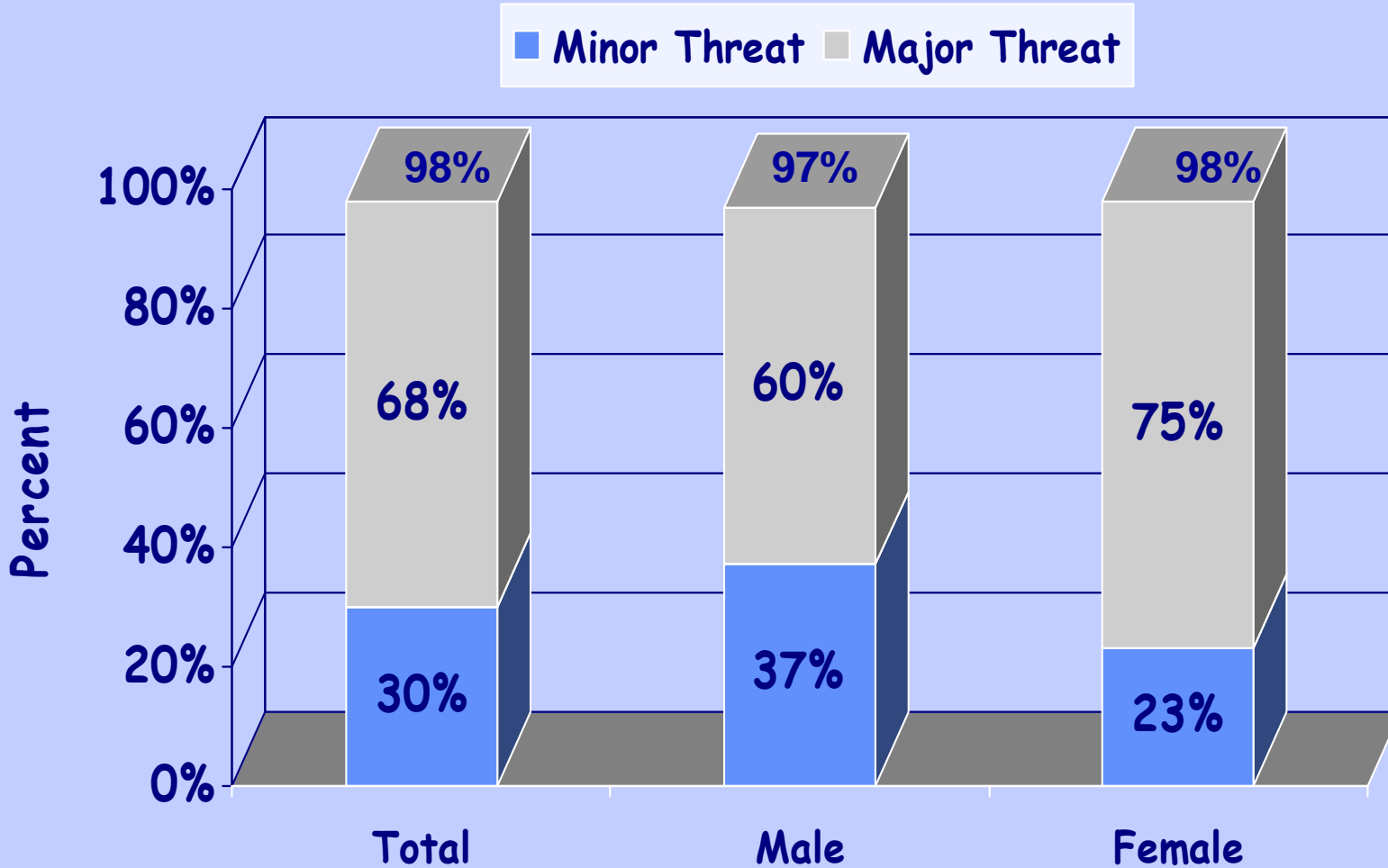
Threat of Others Speeding by Gender

QUESTION: In your opinion, how much of a threat is it to the personal safety of you and your family if other drivers are speeding?

RRESPONSES:

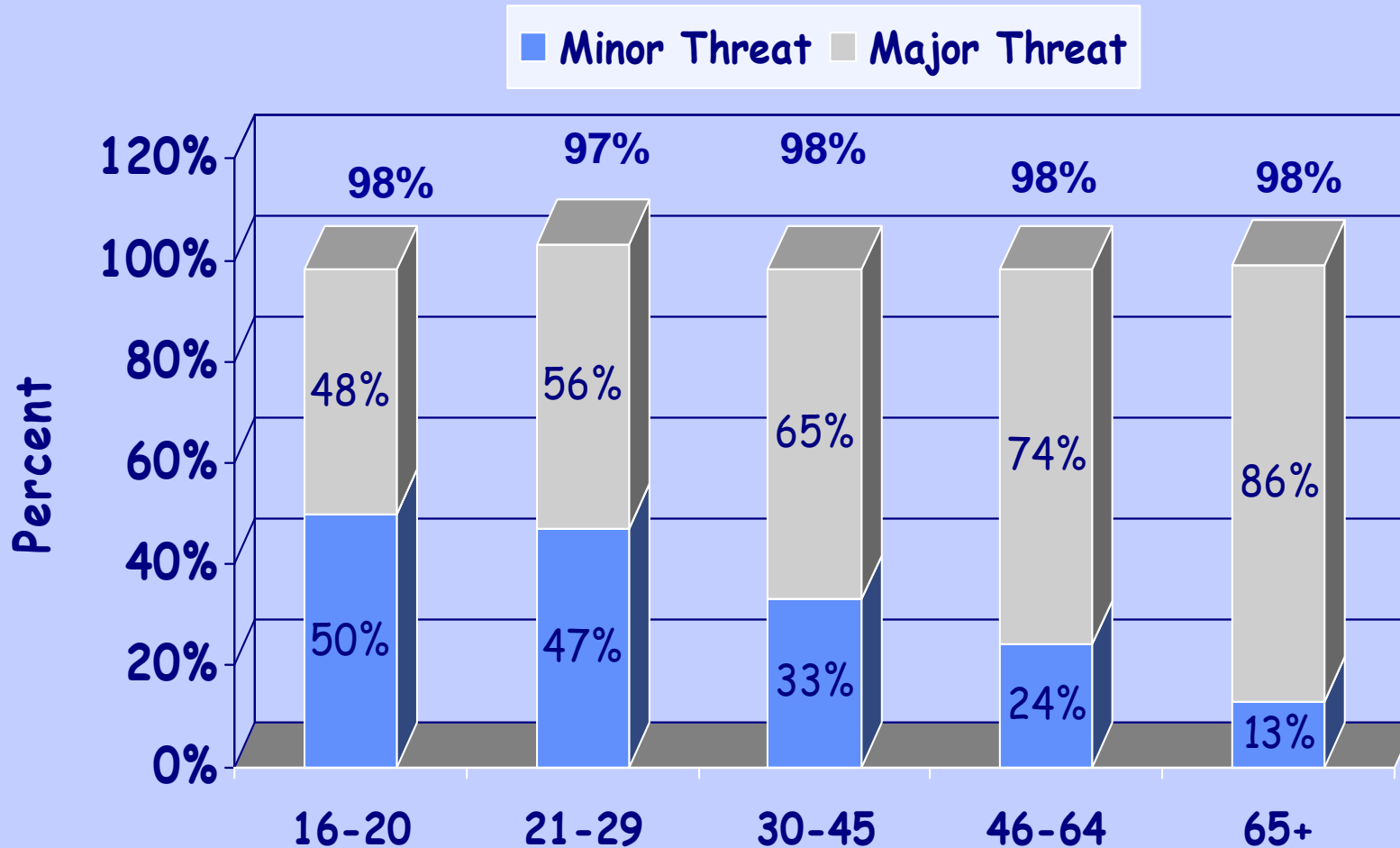
- Major threat
- Minor threat
- No threat

Threat of Others Speeding by Gender



Source: National Survey 2002

Threat of Others Speeding by Age



Source: National Survey 2002

Speeding-Related Fatal Crashes:

- Roadway Type:
 - ◆ Arterial, Collector, Local
- Roadway Alignment:
 - ◆ Curves
- Age:
 - ◆ Young

Summary

- **Gender:**
 - ◆ Male
- **Alcohol:**
 - ◆ Increases with BAC
 - ◆ Young males
 - ◆ Late night
- **Restraint Use:**
 - ◆ Low

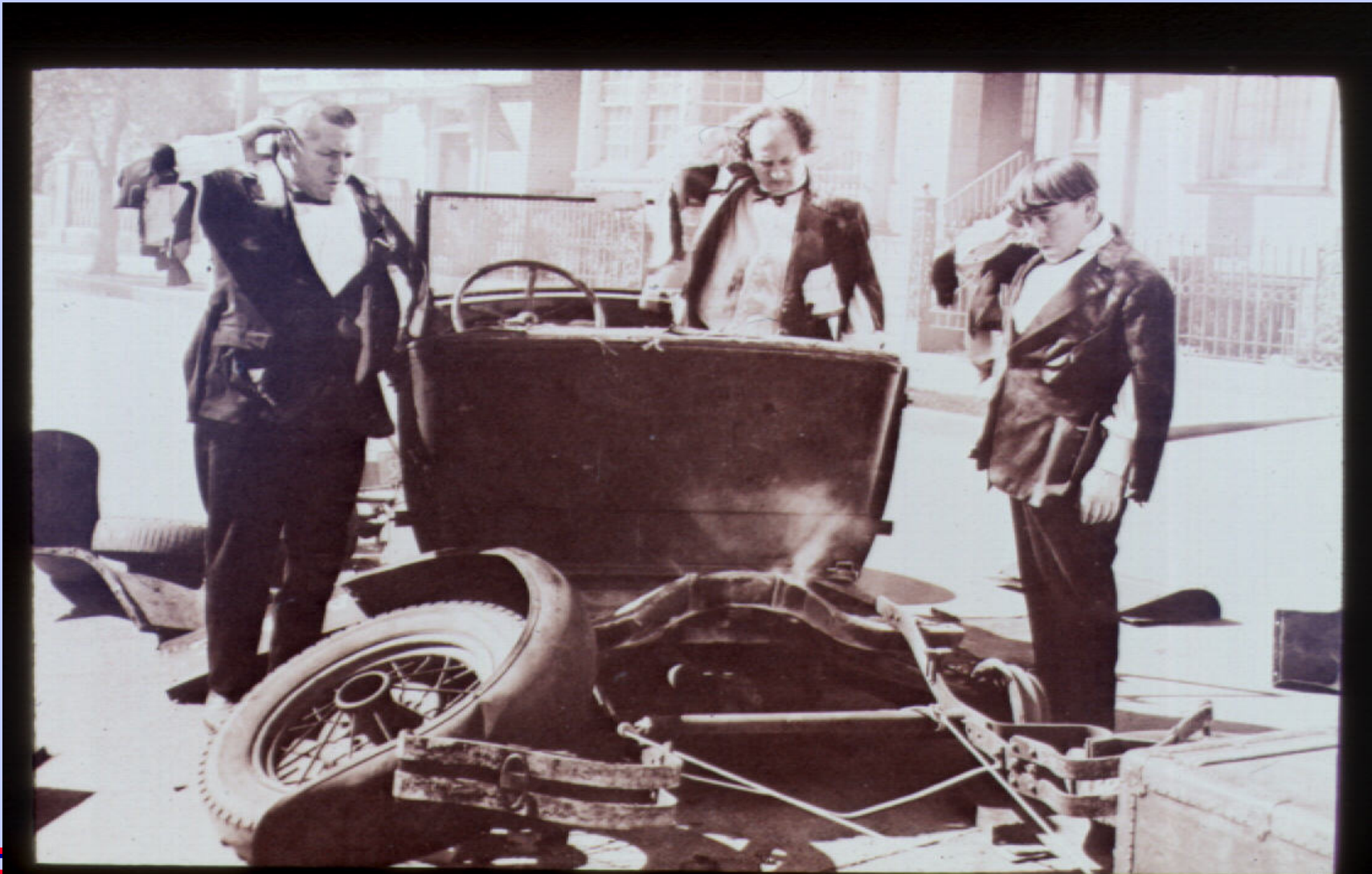
Summary

- Day of Week:
 - ◆ Weekends
- Time of Day:
 - ◆ Late night
- Vehicle Type:
 - ◆ Motorcycles
 - ◆ Passenger cars

Summary

- **Speed Limit:**
 - ◆ 50 mph and below
- **Roadway Conditions:**
 - ◆ Icy, snow/slush, wet

Questions?



www.nhtsa.dot.gov

nhtsa

people saving people