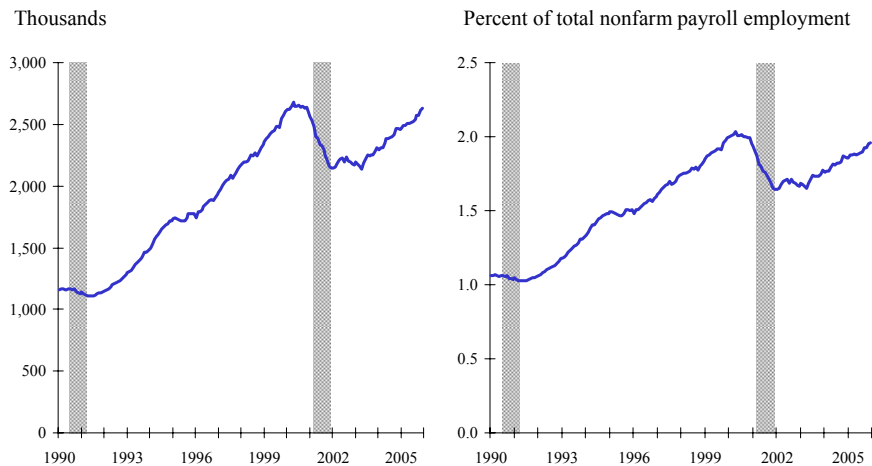


Chart 3-3. Employment in temporary help services has been expanding since 2003



NOTE: Shaded areas represent recessions. Data are seasonally adjusted.

SOURCE: Bureau of Labor Statistics

Chart 3-3. Employment in temporary help services has been expanding since 2003

- Employment in temporary help services—an industry that provides workers to many other industries—grew rapidly during the 1990s, but began to decline in 2000. Employment fell sharply in 2001, and was little changed (on net) in 2002.
- Temporary help employment began increasing in 2003; about half a million jobs were added from April 2003 through December 2005.
- At the end of 2005, the industry accounted for nearly 2 percent of total nonfarm payroll employment, about the same share as at its peak in 2000.