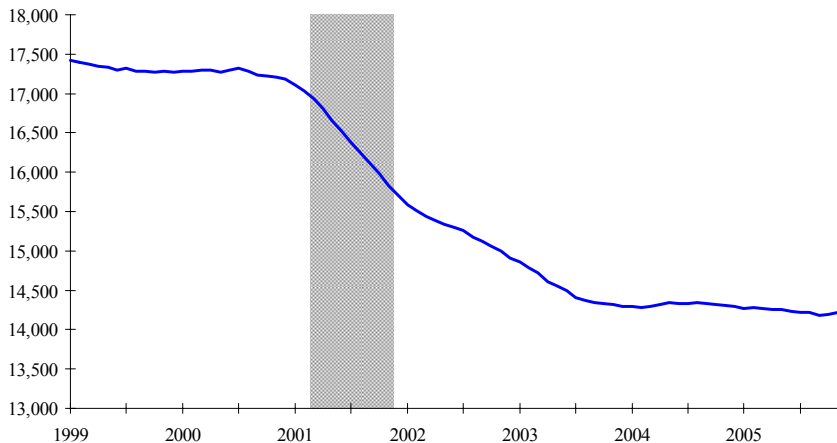


Chart 1-10. Manufacturing employment has edged down slightly since early 2004, following 3 years of sharp declines

Employment in thousands



NOTE: Shaded area represents recession. Data are seasonally adjusted.

SOURCE: Bureau of Labor Statistics

Chart 1-10. Manufacturing employment has edged down slightly since early 2004, following 3 years of sharp declines

- From the beginning of the recession in March 2001 through February 2004, manufacturing lost 2.7 million jobs.
- From February 2004 to December 2005, the number of factory workers edged down by 58,000.
- At 40.7 hours per week in 2005, the factory workweek remains below the 41.3 hour manufacturing workweek that prevailed in 2000.