

Prices

This section presents indexes of producer and consumer prices, actual prices for selected commodities, and energy prices. The primary sources of these data are monthly publications of the Department of Labor, Bureau of Labor Statistics (BLS), which include *Monthly Labor Review*, *Consumer Price Index, Detailed Report*; *Producer Price Indexes*; and *U.S. Import and Export Price Indexes*. The Department of Commerce, Bureau of Economic Analysis, is the source for gross domestic product measures.

Producer price index (PPI)—This index, dating from 1890, is the oldest continuous statistical series published by BLS. It is designed to measure average changes in prices received by producers of all commodities, at all stages of processing, produced in the United States.

The index has undergone several revisions (see *Monthly Labor Review*, February 1962, April 1978, and August 1988). It is now based on approximately 3,200 commodity price series and 80,000 quotations per month. Indexes for the net output of manufacturing and mining industries have been added in recent years. Prices used in constructing the index are collected from sellers and generally apply to the first significant large volume commercial transaction for each commodity—i.e., the manufacturer's or other producer's selling price or the selling price on an organized exchange or at a central market.

The weights used in the index represent the total net selling value of commodities produced or processed in this country. Values are f.o.b. (free-on-board) production point and are exclusive of excise taxes. Effective with the release of data for January 1988, many important producer price indexes were changed to a new reference base year, 1982=100, from 1967=100. The reference year of the PPI shipment weights has been taken primarily from the 1987 Census of Manufactures. For further detail regarding the PPI, see the *BLS Handbook of Methods, Bulletin 2414*, Chapter 16.

In Brief

Consumer price changes:
1996-97:

All items index up 2.3 percent
Medical care index up 2.8 percent
Fuel oil index down -0.1 percent

Consumer price indexes (CPI)—The CPI is a measure of the average change in prices over time in a fixed "market basket" of goods and services purchased either by urban wage earners and clerical workers or by all urban consumers.

In 1919, BLS began to publish complete indexes at semiannual intervals, using a weighting structure based on data collected in the expenditure survey of wage-earner and clerical-worker families in 1917-19 (BLS Bulletin 357, 1924). The first major revision of the CPI occurred in 1940, with subsequent revisions in 1953, 1964, 1978, and 1987.

Beginning with the release of data for January 1988 in February 1988, most Consumer Price Indexes shifted to a new reference base year. All indexes previously expressed on a base of 1967=100, or any other base through December 1981, have been rebased to 1982-84=100. Selection of the 1982-84 period was made to coincide with the updated expenditure weights, which are based upon data tabulated from the Consumer Expenditure Surveys for 1982, 1983, and 1984.

BLS publishes CPI's for two population groups: (1) a CPI for All Urban Consumers (CPI-U) which covers approximately 80 percent of the total population; and (2) a CPI for Urban Wage Earners and Clerical Workers; (CPI-W) which covers 32 percent of the total population. The CPI-U includes, in addition to wage earners and clerical workers, groups which historically have been excluded from CPI coverage, such as professional, managerial, and technical workers; the self-employed, short-term

workers, the unemployed, and retirees; and others not in the labor force.

The current CPI is based on prices of food, clothing, shelter, fuels, transportation fares, charges for doctors' and dentists' services, drugs, etc., purchased for day-to-day living. Prices are collected in 85 areas across the country from over 57,000 housing units and 19,000 establishments. Area selection was based on the 1980 census. All taxes directly associated with the purchase and use of items are included in the index. Prices of food, fuels, and a few other items are obtained every month in all 85 locations. Prices of most other commodities and services are collected monthly in the five largest geographic areas and every other month in other areas.

In calculating the index, each item is assigned a weight to account for its relative importance in consumers' budgets. Price changes for the various items in each location are then averaged. Local data are then combined to obtain a U.S. city average. Separate indexes are also published for regions, area size-classes, cross-classifications of regions and size-classes, and for 29 local areas, usually consisting of the Metropolitan Statistical Area (MSA); see Appendix II. Area definitions are those established by the Office of Management and Budget in 1983. Definitions do not include revisions made since 1983. Area indexes do not measure differences in the level of prices among cities; they only measure the average change in prices for each area since the base period. For further detail regarding the CPI, see the BLS *Handbook of Methods*, Bulletin 2414, Chapter 19; the Consumer Price Index, and Report 736, the CPI: 1987 Revision. In January 1983, the method of measuring homeownership costs in the CPI-U was changed to a rental equivalence approach. This treatment calculates homeowner costs of shelter based on the implicit rent owners would pay to rent the homes they own. The rental equivalence approach was introduced into the CPI-W in 1985. The CPI-U was used to prepare the consumer prices tables in this section.

International price indexes—The BLS International Price Program produces export and import price indexes for non-

military goods traded between the United States and the rest of the world. The export price index provides a measure of price change for all products sold by U.S. residents to foreign buyers. The import price index provides a measure of price change for goods purchased from other countries by U.S. residents. The reference period for the indexes is 1990=100, unless otherwise indicated.

The product universe for both the import and export indexes includes raw materials, agricultural products, semifinished manufactures, and finished manufactures, including both capital and consumer goods. Price data for these items are collected primarily by mail questionnaire. In nearly all cases, the data are collected directly from the exporter or importer, although in a few cases, prices are obtained from other sources.

To the extent possible, the data gathered refer to prices at the U.S. border for exports and at either the foreign border or the U.S. border for imports. For nearly all products, the prices refer to transactions completed during the first week of the month. Survey respondents are asked to indicate all discounts, allowances, and rebates applicable to the reported prices, so that the price used in the calculation of the indexes is the actual price for which the product was bought or sold.

In addition to general indexes for U.S. exports and imports, indexes are also published for detailed product categories of exports and imports. These categories are defined according to the five-digit level of detail for the Bureau of Economic Analysis End-Use Classification, the three-digit level of detail for the Standard International Trade Classification (SITC), and the four-digit level of detail for the Harmonized System. Aggregate import indexes by country or region of origin are also available.

Other price indexes—Chain-weighted price indexes are weighted averages of the detailed price indexes used in the deflation of goods and services that make up the gross domestic product (GDP). The weights used for the most recent year reflect the composition of goods and services in the preceding

year; for all other years, the weights reflect the composition of goods and services in the preceding year and the current year. Chain-weighted price indexes provide the most reliable comparisons of rates of price of goods and services produced in the United States; another index, the gross domestic purchases chained price index, measures the average price of goods and services purchased in the United States. The difference between these two measures is due to net exports. Both price indexes are expressed in terms of the base year value 1992=100.

Measures of inflation—Inflation is defined as a time of generally rising prices for goods and factors of production. The Bureau of Labor Statistics samples prices of items in a representative market basket and publishes the results as the CPI. The media invariably announce the inflation rate as the percent change in the CPI from month to month. A much more meaningful indicator of inflation is the percent change from the same month of the prior year.

The Producer Price Index (PPI) measures prices at the producer/manufacturing level only. The PPI shows the same general pattern of inflation as does the CPI, but is more volatile. The PPI can be roughly viewed as a leading indicator. It often tends to foreshadow trends that later occur in the CPI.

Other measures of inflation include the gross domestic purchases chain-weighted price index, index of industrial materials prices; the Dow Jones Commodity Spot Price Index; Futures Price Index, the Employment Cost Index, the Hourly Compensation Index, or the Unit Labor Cost Index as a measure of the change in cost of the labor factor of production, and changes in long-term interest rates that are often used to measure changes in the cost of the capital factor of production.

Statistical reliability—For a discussion of statistical collection and estimation, sampling procedures, and measures of statistical reliability pertaining to the producer price index and the CPI, see Appendix III.

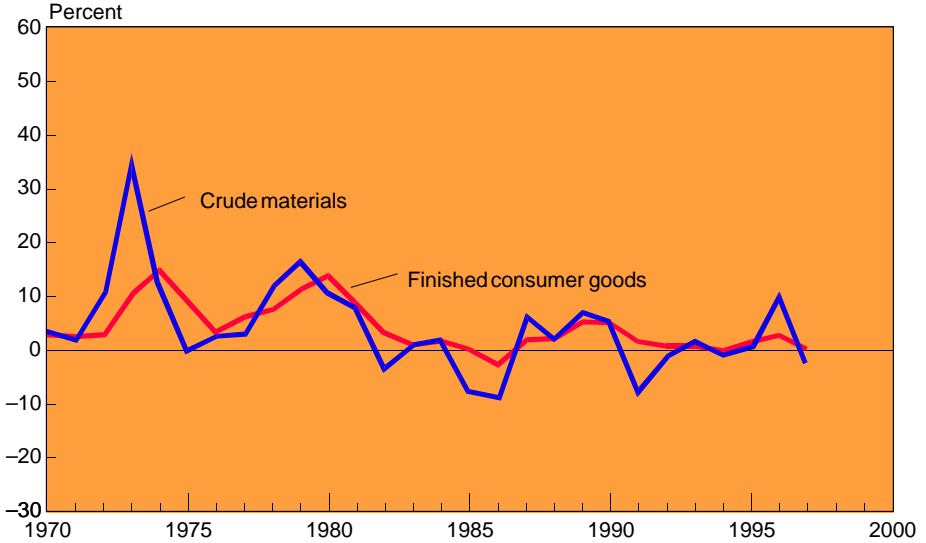
No. 771. Purchasing Power of the Dollar: 1950 to 1997

[Indexes: PPI, 1982=\$1.00; CPI, 1982-84=\$1.00. Producer prices prior to 1961, and consumer prices prior to 1964, exclude Alaska and Hawaii. Producer prices based on finished goods index. Obtained by dividing the average price index for the 1982=100, PPI; 1982-84=100, CPI base periods (100.0) by the price index for a given period and expressing the result in dollars and cents. Annual figures are based on average of monthly data]

YEAR	ANNUAL AVERAGE AS MEASURED BY—		YEAR	ANNUAL AVERAGE AS MEASURED BY—		YEAR	ANNUAL AVERAGE AS MEASURED BY—	
	Producer prices	Consumer prices		Producer prices	Consumer prices		Producer prices	Consumer prices
1950	\$3.546	\$4.151	1966	2.841	3.080	1982	1.000	1.035
1951	3.247	3.846	1967	2.809	2.993	1983	0.984	1.003
1952	3.268	3.765	1968	2.732	2.873	1984	0.964	0.961
1953	3.300	3.735	1969	2.632	2.726	1985	0.955	0.928
1954	3.289	3.717	1970	2.545	2.574	1986	0.969	0.913
1955	3.279	3.732	1971	2.469	2.466	1987	0.949	0.880
1956	3.195	3.678	1972	2.392	2.391	1988	0.926	0.846
1957	3.077	3.549	1973	2.193	2.251	1989	0.880	0.807
1958	3.012	3.457	1974	1.901	2.029	1990	0.839	0.766
1959	3.021	3.427	1975	1.718	1.859	1991	0.822	0.734
1960	2.994	3.373	1976	1.645	1.757	1992	0.812	0.713
1961	2.994	3.340	1977	1.546	1.649	1993	0.802	0.692
1962	2.985	3.304	1978	1.433	1.532	1994	0.797	0.675
1963	2.994	3.265	1979	1.289	1.380	1995	0.782	0.656
1964	2.985	3.220	1980	1.136	1.215	1996	0.762	0.638
1965	2.933	3.166	1981	1.041	1.098	1997	0.759	0.623

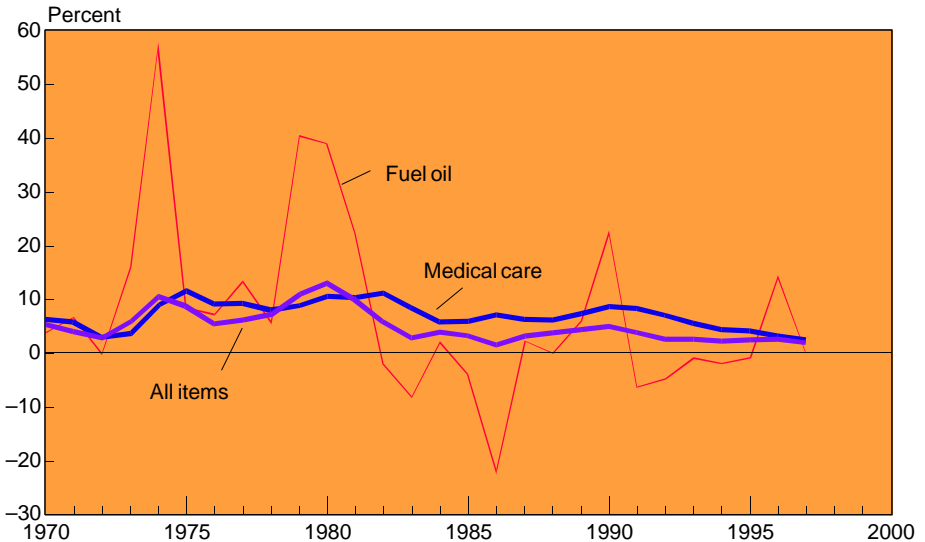
Source: U.S. Bureau of Labor Statistics. Monthly data in U.S. Bureau of Economic Analysis, *Survey of Current Business*.

Figure 15.1
Annual Percent Change in Producer Price Indexes by Stage of Processing: 1970 to 1997



Source: Chart prepared by U.S. Bureau of the Census. For data, see Table 777.

Figure 15.2
Annual Percent Change in Consumer Price Indexes: 1970 to 1997



Source: Chart prepared by U.S. Bureau of the Census. For data, see Table 772.

No. 772. Consumer Price Indexes (CPI-U), by Major Groups: 1939 to 1997

[1982-84=100. Represents annual averages of monthly figures. Reflects buying patterns of all urban consumers. Minus sign (-) indicates decrease. See text, Section 15]

YEAR	All items	Com-modities	Energy	Food	Shelter	Apparel and upkeep	Transportation	Medical care	Fuel oil	Electricity	Utility (piped) gas	Telephone services
1939	13.9	14.8	(NA)	11.8	(NA)	21.6	14.3	10.3	5.8	28.9	12.9	36.1
1940	14.0	14.9	(NA)	12.0	(NA)	21.8	14.2	10.4	6.1	28.6	12.8	36.1
1945	18.0	20.7	(NA)	17.3	(NA)	31.4	15.9	11.9	7.5	28.0	12.3	41.3
1950	24.1	29.0	(NA)	25.4	(NA)	40.3	22.7	15.1	11.0	27.2	13.2	49.5
1955	26.8	31.3	(NA)	27.8	22.7	42.9	25.8	18.2	13.0	28.5	14.6	52.9
1960	29.6	33.6	(NA)	30.0	25.2	45.7	29.8	22.3	13.5	29.9	17.6	58.3
1965	31.5	35.2	22.9	32.2	27.0	47.8	31.9	25.2	14.3	29.7	18.0	57.7
1966	32.4	36.1	23.3	33.8	27.8	49.0	32.3	26.3	14.7	29.7	18.1	56.5
1967	33.4	36.8	23.8	34.1	28.8	51.0	33.3	28.2	15.1	29.9	18.1	57.3
1968	34.8	38.1	24.2	35.3	30.1	53.7	34.3	29.9	15.6	30.2	18.2	57.3
1969	36.7	39.9	24.8	37.1	32.6	56.8	35.7	31.9	15.9	30.8	18.6	58.0
1970	38.8	41.7	25.5	39.2	35.5	59.2	37.5	34.0	16.5	31.8	19.6	58.7
1971	40.5	43.2	26.5	40.4	37.0	61.1	39.5	36.1	17.6	33.9	21.0	61.6
1972	41.8	44.5	27.2	42.1	38.7	62.3	39.9	37.3	17.6	35.6	22.1	65.0
1973	44.4	47.8	29.4	48.2	40.5	64.6	41.2	38.8	20.4	37.4	23.1	66.7
1974	49.3	53.5	38.1	55.1	44.4	69.4	45.8	42.4	34.2	44.1	26.0	69.5
1975	53.8	58.2	42.1	59.8	48.8	72.5	50.1	47.5	34.9	50.0	31.1	71.7
1976	56.9	60.7	45.1	61.6	51.5	75.2	55.1	52.0	37.4	53.1	36.3	74.3
1977	60.6	64.2	49.4	65.5	54.9	78.6	59.0	57.0	42.4	56.6	43.2	75.2
1978	65.2	68.8	52.5	72.0	60.5	81.4	61.7	61.8	44.9	60.9	47.5	76.0
1979	72.6	76.6	65.7	79.9	68.9	84.9	70.5	67.5	63.1	65.6	55.1	75.8
1980	82.4	86.0	86.0	86.8	81.0	90.9	83.1	74.9	87.7	75.8	65.7	77.7
1981	90.9	93.2	97.7	93.6	90.5	95.3	93.2	82.9	107.3	87.2	74.9	84.6
1982	96.5	97.0	99.2	97.4	96.9	97.8	97.0	92.5	105.0	95.8	89.8	93.2
1983	99.6	99.8	99.9	99.4	99.1	100.2	99.3	100.6	96.5	98.9	104.7	99.2
1984	103.9	103.2	100.9	103.2	104.0	102.1	103.7	106.8	98.5	105.3	105.5	107.5
1985	107.6	105.4	101.6	105.6	109.8	105.0	106.4	113.5	94.6	108.9	104.8	111.7
1986	109.6	104.4	88.2	109.0	115.8	105.9	102.3	122.0	74.1	110.4	99.7	117.2
1987	113.6	107.7	88.6	113.5	121.3	110.6	105.4	130.1	75.8	110.0	95.1	116.5
1988	118.3	111.5	89.3	118.2	127.1	115.4	108.7	138.6	75.8	111.5	94.5	116.0
1989	124.0	116.7	94.3	125.1	132.8	118.6	114.1	149.3	80.3	114.7	97.1	117.2
1990	130.7	122.8	102.1	132.4	140.0	124.1	120.5	162.8	98.6	117.4	97.3	117.7
1991	136.2	126.6	102.5	136.3	146.3	128.7	123.8	177.0	92.4	121.8	98.5	119.7
1992	140.3	129.1	103.0	137.9	151.2	131.9	126.5	190.1	88.0	124.2	100.3	120.4
1993	144.5	131.5	104.2	140.9	155.7	133.7	130.4	201.4	87.2	126.7	106.5	121.2
1994	148.2	133.8	104.6	144.3	160.5	133.4	134.3	211.0	85.6	126.7	108.5	123.1
1995	152.4	136.4	105.2	148.4	165.7	132.0	139.1	220.5	84.8	129.6	102.9	124.0
1996	156.9	139.9	110.1	153.3	171.0	131.7	143.0	228.2	97.0	131.8	107.2	125.9
1997	160.5	141.8	111.5	157.3	176.3	132.9	144.3	234.6	96.9	132.5	114.6	127.7
PERCENT CHANGE												
1940	0.7	0.7	(NA)	1.7	(NA)	0.9	-0.7	1.0	5.2	-1.0	-0.8	-
1945	2.3	3.0	(NA)	2.4	(NA)	5.4	-	2.6	-5.1	-0.7	-0.8	1.5
1950	1.3	0.7	(NA)	1.6	(NA)	-1.2	2.7	2.0	0.9	0.4	0.8	7.6
1955	-0.4	-0.9	(NA)	-1.4	0.9	-0.5	-1.1	2.2	3.2	1.4	3.5	-0.9
1960	1.7	0.9	2.3	1.0	2.0	1.6	-	3.7	-1.5	1.4	6.7	1.6
1965	1.6	1.1	1.8	2.2	1.9	1.1	1.6	2.4	2.1	-0.3	0.6	-1.5
1970	5.7	4.5	2.8	5.7	8.9	4.2	5.0	6.6	3.8	3.2	5.4	1.2
1971	4.4	3.6	3.9	3.1	4.2	3.2	5.3	6.2	6.7	6.6	7.1	4.9
1972	3.2	3.0	2.6	4.2	4.6	2.0	1.0	3.3	0.0	5.0	5.2	5.5
1973	6.2	7.4	8.1	14.5	4.7	3.7	3.3	4.0	15.9	5.1	4.5	2.6
1974	11.0	11.9	29.6	14.3	9.6	7.4	11.2	9.3	57.8	17.9	12.6	4.2
1975	9.1	8.8	10.5	8.5	9.9	4.5	9.4	12.0	8.4	13.4	19.6	3.2
1976	5.8	4.3	7.1	3.0	5.5	3.7	10.0	9.5	7.2	6.2	16.7	3.6
1977	6.5	5.8	9.5	6.3	6.6	4.5	7.1	9.6	13.4	6.6	19.0	1.2
1978	7.6	7.2	6.3	9.9	10.2	3.6	4.6	8.4	5.9	7.6	10.0	1.1
1979	11.3	11.3	25.1	11.0	13.9	4.3	14.3	9.2	40.5	7.7	16.0	-0.3
1980	13.5	12.3	30.9	8.6	17.6	7.1	17.9	11.0	39.0	15.5	19.2	2.5
1981	10.3	8.4	13.6	7.8	11.7	4.8	12.2	10.7	22.3	15.0	14.0	8.9
1982	6.2	4.1	1.5	4.1	7.1	2.6	4.1	11.6	-2.1	9.9	19.9	10.2
1983	3.2	2.9	0.7	2.1	2.3	2.5	2.4	8.8	-8.1	3.2	16.6	6.4
1984	4.3	3.4	1.0	3.8	4.9	1.9	4.4	6.2	2.1	6.5	0.8	8.4
1985	3.6	2.1	0.7	2.3	5.6	2.8	2.6	6.3	-4.0	3.4	-0.7	3.9
1986	1.9	-0.9	-13.2	3.2	5.5	0.9	-3.9	7.5	-21.7	1.4	-4.9	4.9
1987	3.6	3.2	0.5	4.1	4.7	4.4	3.0	6.6	2.3	-0.4	-4.6	-0.6
1988	4.1	3.5	0.8	4.1	4.8	4.3	3.1	6.5	-	1.4	-0.6	-0.4
1989	4.8	4.7	5.6	5.8	4.5	2.8	5.0	7.7	5.9	2.9	2.8	1.0
1990	5.4	5.2	8.3	5.8	5.4	4.6	5.6	9.0	22.8	2.4	0.2	0.4
1991	4.2	3.1	0.4	2.9	4.5	3.7	2.7	8.7	-6.3	3.7	1.2	1.7
1992	3.0	2.0	0.5	1.2	3.3	2.5	2.2	7.4	-4.8	2.0	1.8	0.6
1993	3.0	1.9	1.2	2.2	3.0	1.4	3.1	5.9	-0.9	2.0	6.2	0.7
1994	2.6	1.7	0.4	2.4	3.1	-0.2	3.0	4.8	-1.9	-	1.9	1.6
1995	2.8	1.9	0.6	2.8	3.2	-1.0	3.6	4.5	-0.9	2.3	-5.2	0.7
1996	3.0	2.6	4.7	3.3	3.2	-0.2	2.8	3.5	14.4	1.7	4.2	1.5
1997	2.3	1.4	1.3	2.6	3.1	0.9	0.9	2.8	-0.1	0.5	6.9	1.4

- Represents zero. NA Not available.

Source: Bureau of Labor Statistics, *Monthly Labor Review and Handbook of Labor Statistics*, periodic.

No. 773. Consumer Price Indexes for All Urban Consumers (CPI-U) for Selected Items and Groups: 1980 to 1997

[1982-84=100. Annual averages of monthly figures. See headnote, Table 772]

ITEM	1980	1990	1991	1992	1993	1994	1995	1996	1997
All items	82.4	130.7	136.2	140.3	144.5	148.2	152.4	156.9	160.5
Food and beverages	86.7	132.1	136.8	138.7	141.6	144.9	148.9	153.7	157.7
Food	86.8	132.4	136.3	137.9	140.9	144.3	148.4	153.3	157.3
Food at home	88.4	132.3	135.8	136.8	140.1	144.1	148.8	154.3	158.1
Cereals and bakery products	83.9	140.0	145.8	151.5	156.6	163.0	167.5	174.0	177.6
Cereals and cereal products	84.2	141.1	147.5	153.3	157.9	164.8	167.1	168.9	169.5
Cereals	76.3	158.6	168.1	175.4	183.3	190.6	192.5	190.0	187.5
Rice, pasta, and commmeal	90.9	122.0	126.5	128.3	129.7	139.7	140.2	144.2	148.8
Bakery products	83.8	139.2	144.7	150.4	155.7	161.9	167.4	176.1	181.1
White bread	85.9	136.4	139.3	146.2	152.2	159.0	165.5	177.5	183.8
Cookies, cakes, and cupcakes	81.5	142.7	151.1	155.6	159.3	165.1	169.1	174.1	179.2
Meats, poultry, fish and eggs	92.0	130.0	132.6	130.9	135.5	137.2	138.8	144.8	148.5
Meats	92.7	128.5	132.5	130.7	134.6	135.4	135.5	140.2	144.4
Beef and veal	98.4	128.8	132.4	132.3	137.1	136.0	134.9	134.5	136.8
Ground beef excl. canned	104.6	118.1	119.9	118.9	121.7	119.7	116.1	114.3	116.4
Chuck roast	99.8	130.3	135.8	137.1	141.9	140.3	138.7	140.0	142.3
Round steak	98.9	125.1	129.5	129.9	134.4	133.0	130.4	129.3	130.1
Sirloin steak	96.2	130.6	133.5	132.4	138.5	137.5	138.7	137.6	139.0
Pork	81.9	129.8	134.1	127.8	131.7	133.9	134.8	142.2	155.9
Bacon	73.5	113.4	119.8	104.6	110.8	118.1	120.0	148.9	164.0
Chops	82.9	140.2	141.7	138.9	144.6	144.2	144.2	153.0	155.2
Ham	85.5	132.4	139.9	135.6	137.9	139.3	139.6	149.2	156.3
Poultry	93.7	132.5	131.5	131.4	136.9	141.5	143.5	152.4	156.6
Fresh whole chicken	94.4	134.9	131.7	131.9	138.0	140.1	142.2	152.6	158.5
Fresh, frozen chicken parts	91.7	135.9	134.7	134.4	140.1	145.6	146.0	155.0	157.4
Fish and seafood	87.5	146.7	148.3	151.7	156.6	163.7	171.6	173.1	177.1
Canned fish and seafood	93.7	119.5	119.0	118.7	121.5	123.8	125.5	125.9	128.4
Fresh, frozen fish, seafood	84.1	161.4	163.8	168.7	174.5	183.6	194.1	196.0	200.7
Eggs	88.6	124.1	121.2	108.3	117.1	114.3	120.5	142.1	140.0
Dairy products	90.9	126.5	125.1	128.5	129.4	131.7	132.8	142.1	145.5
Fruits and vegetables	82.1	149.0	155.8	155.4	159.0	165.0	177.7	183.9	187.5
Fresh fruits and vegetables	81.8	(NA)	(NA)	(NA)	(NA)	186.7	206.0	211.8	215.4
Fresh fruits	84.8	170.9	193.9	184.2	188.8	201.2	219.0	234.4	236.3
Apples	92.1	147.5	172.8	179.5	169.0	174.0	183.5	202.3	199.6
Bananas	91.5	138.2	145.0	139.9	135.5	143.6	153.8	159.0	159.6
Oranges, tangerines	72.6	160.6	249.4	176.2	190.1	189.9	224.5	239.3	226.1
Fresh vegetables	79.0	151.1	154.4	157.9	168.7	172.3	193.1	189.2	194.6
Potatoes	81.0	162.6	144.6	141.5	154.6	174.3	174.7	180.6	174.2
Lettuce	77.8	150.3	159.8	155.7	178.2	170.3	221.2	185.7	200.1
Tomatoes	81.9	160.8	153.1	171.8	168.0	173.5	188.3	198.2	213.6
Processed fruits and vegetables	82.6	(NA)	(NA)	(NA)	(NA)	134.5	137.5	144.4	147.9
Processed fruits	82.1	136.9	131.8	137.7	132.3	133.1	137.2	145.2	148.8
Processed vegetables	83.1	127.5	128.5	128.8	130.8	136.6	138.3	143.9	147.5
Coffee	111.6	117.5	115.3	110.7	109.8	140.4	163.1	149.2	168.0
Food away from home	83.4	(NA)	(NA)	(NA)	(NA)	145.7	149.0	152.7	157.0
Lunch	83.8	133.9	138.4	141.3	144.0	146.4	149.6	153.3	157.7
Dinner	84.2	132.3	136.3	138.9	141.3	143.8	147.1	150.7	154.7
Alcoholic beverages	86.4	129.3	142.8	147.3	149.6	151.5	153.9	158.5	162.8
Alcoholic beverages at home	87.3	123.0	137.8	141.6	142.2	142.5	143.1	146.8	149.5
Beer and ale	84.8	123.6	138.4	143.5	144.2	143.4	143.9	147.4	148.2
Distilled spirits	89.8	125.7	139.2	141.5	143.2	144.3	145.7	147.5	150.8
Wine	89.5	114.4	129.9	132.6	134.0	133.3	133.6	139.3	145.5
Alcoholic beverages away from home	82.9	144.4	156.9	162.5	167.4	171.6	176.5	182.7	189.4
Housing	81.1	128.5	133.6	137.5	141.2	144.8	148.5	152.8	156.8
Shelter	81.0	140.0	146.3	151.2	155.7	160.5	165.7	171.0	176.3
Renters' cost	(NA)	146.7	155.6	160.9	165.0	169.4	174.3	180.2	186.4
Rent, residential	80.9	138.4	143.3	146.9	150.3	154.0	157.8	162.0	166.7
Tenants' insurance	78.9	130.6	133.2	136.5	140.8	145.8	150.9	154.7	159.2
Homeowners' costs	(NA)	144.6	150.2	155.3	160.2	165.5	171.0	176.5	181.5
Owners' equivalent rent	(NA)	144.8	150.4	155.5	160.5	165.8	171.3	176.8	181.9
Household insurance	(NA)	135.3	138.4	142.2	146.9	152.3	157.4	161.0	165.3
Maintenance and repair	82.4	122.2	126.3	128.6	130.6	130.8	135.0	139.0	143.7
Fuels and other utilities	75.4	111.6	115.3	117.8	121.3	122.8	123.7	127.5	130.8
Fuels	74.8	104.5	106.7	108.1	111.2	111.7	111.5	115.2	117.9
Fuel oil and other	86.1	99.3	94.6	90.7	90.3	88.8	88.1	92.2	99.8
Fuel oil	87.7	98.6	92.4	88.0	87.2	85.6	84.8	97.0	96.9
Gas (pipd) and electricity	71.4	109.3	112.6	114.8	118.5	119.2	119.2	122.1	125.1
Electricity	75.8	117.4	121.8	124.2	126.7	126.7	129.6	131.8	132.5
Utility (pipd) gas	65.7	97.3	98.5	100.3	106.5	108.5	102.9	107.2	114.6
Telephone services	77.7	117.7	119.7	120.4	121.2	123.1	124.0	125.9	127.7
Local charges	72.8	149.3	153.9	155.7	156.4	156.9	160.4	160.8	163.1
Interstate toll charges	83.3	68.2	67.6	68.0	69.6	75.2	74.9	77.9	77.3
Intrastate toll charges	85.2	95.1	93.1	91.4	90.7	90.2	86.0	89.4	93.9
Water and sewerage maintenance	74.0	150.2	161.1	172.1	181.4	190.6	196.5	204.5	210.0
Cable television	(NA)	158.4	175.7	186.2	198.9	197.4	200.7	212.6	228.7
Refuse collection	(NA)	171.2	189.2	207.3	220.5	231.4	241.2	246.0	250.5

See footnotes at end of table.

No. 773. Consumer Price Indexes for All Urban Consumers (CPI-U) for Selected Items and Groups: 1980 to 1997—Continued

[1982-84=100. Annual averages of monthly figures. See headnote, table 772]

ITEM	1980	1990	1991	1992	1993	1994	1995	1996	1997
Household furnishings and operations	86.3	113.3	116.0	118.0	119.3	121.0	123.0	124.7	125.4
Housefurnishings	88.5	106.7	107.5	109.0	109.5	111.0	111.2	111.3	110.6
Furniture and bedding	88.0	115.7	116.6	120.6	123.5	128.2	130.9	134.1	134.5
Bedroom furniture	83.5	118.5	120.1	126.8	132.5	135.1	136.4	139.3	141.5
Sofas	(NA)	118.4	118.3	119.4	120.1	125.2	132.8	141.5	142.0
Living room chairs and tables	(NA)	116.7	118.4	121.9	125.0	132.7	136.6	136.9	136.7
Appliances and electronic equip.	93.5	87.8	86.0	84.6	83.4	82.3	80.0	77.8	75.3
Video and audio equipment	100.7	80.8	79.4	78.4	77.1	76.0	73.9	71.3	69.1
Television	104.6	74.6	72.9	72.4	70.7	69.9	68.1	64.5	61.7
Video products other than TV	(NA)	91.5	84.6	81.0	78.5	73.8	70.3	66.3	63.4
Audio products	97.7	93.2	94.6	94.4	93.9	93.8	92.1	90.7	88.9
Housekeeping supplies	83.2	125.2	128.9	129.6	130.7	132.3	137.1	141.1	143.1
Housekeeping services	84.3	120.1	127.5	132.1	135.8	138.5	143.7	148.0	151.9
Postage	76.2	125.1	143.6	145.3	145.3	145.3	160.3	160.3	160.3
Apparel and upkeep	90.9	124.1	128.7	131.9	133.7	133.4	132.0	131.7	132.9
Apparel commodities	92.9	122.0	126.4	129.4	131.0	130.4	128.7	128.2	129.1
Apparel commodities less footwear	93.0	122.8	127.4	130.2	131.9	131.2	129.3	128.5	129.4
Men's and boy's apparel	89.4	120.4	124.2	126.5	127.5	126.4	126.2	127.7	130.1
Women's and girl's apparel	96.0	122.6	127.6	130.4	132.6	130.9	126.9	124.7	126.1
Infants' and toddlers'	85.5	125.8	128.9	129.3	127.1	128.1	127.2	129.7	129.0
Footwear	91.8	117.4	120.9	125.0	125.9	126.0	125.4	126.6	127.6
Transportation	83.1	120.5	123.8	126.5	130.4	134.3	139.1	143.0	144.3
Private transportation	84.2	118.8	121.9	124.6	127.5	131.4	136.3	140.0	141.0
New vehicles	88.5	121.4	126.0	129.2	132.7	137.6	141.0	143.7	144.3
New cars	88.4	121.0	125.3	128.4	131.5	136.0	139.0	141.4	141.7
New trucks	(NA)	121.6	127.0	130.9	135.7	141.7	145.9	149.5	151.4
Used cars	62.3	117.6	118.1	123.2	133.9	141.7	156.5	157.0	151.1
Motor fuel	97.4	101.2	99.4	99.0	98.0	98.5	100.0	106.3	106.2
Automobile maintenance and repair	81.5	130.1	136.0	141.3	145.9	150.2	154.0	158.4	162.7
Automobile insurance	82.0	177.9	191.5	205.5	216.7	224.8	234.3	243.9	251.6
Automobile finance charges	86.4	99.6	98.0	86.1	78.6	83.8	99.0	94.4	93.6
Vehicle rental, registration, other	78.3	148.1	154.8	162.3	169.8	174.2	177.9	181.1	185.4
Public transportation	69.0	142.6	148.9	151.4	167.0	172.0	175.9	181.9	186.7
Airline fares	68.0	148.4	155.2	155.2	178.7	185.5	189.7	192.5	199.2
Other intercity transportation	73.1	143.3	149.0	152.5	150.9	152.8	153.3	156.0	155.1
Intracity transportation	69.7	133.5	138.9	146.9	150.7	152.7	157.5	173.2	175.8
Medical care	74.9	162.8	177.0	190.1	201.4	211.0	220.5	228.2	234.6
Medical care commodities	75.4	163.4	176.8	188.1	195.0	200.7	204.5	210.4	215.3
Prescription drugs	72.5	181.7	199.7	214.7	223.0	230.6	235.0	242.9	249.3
Nonprescription drugs, medical sup.	(NA)	120.6	126.3	131.2	135.5	138.1	140.5	143.1	145.4
Medical care services	74.8	162.7	177.1	190.5	202.9	213.4	224.2	232.4	239.1
Professional medical services	77.9	156.1	165.7	175.8	184.7	192.5	201.0	208.3	215.4
Physicians' services	76.5	160.8	170.5	181.2	191.3	199.8	208.8	216.4	222.9
Dental services	78.9	155.8	167.4	178.7	188.1	197.1	206.8	216.5	226.6
Eye care	(NA)	117.3	121.9	127.0	130.4	133.0	137.0	139.3	141.5
Hospital and related services	69.2	178.0	196.1	214.0	231.9	245.6	257.8	269.5	278.4
Hospital rooms	68.0	175.4	191.9	208.7	226.4	239.2	251.2	261.0	(NA)
Entertainment	83.6	132.4	138.4	142.3	145.8	150.1	153.9	159.1	162.5
Entertainment commodities	84.5	124.0	128.6	131.3	133.4	136.1	138.7	143.0	144.2
Reading materials	77.7	136.2	144.7	150.9	156.2	161.3	168.1	176.4	179.0
Newspapers	79.4	134.6	146.5	154.8	161.1	168.2	178.7	188.9	191.3
Magazines, periodicals, and books	75.9	137.9	143.3	147.4	151.8	155.1	158.4	165.0	167.8
Sporting goods, equipment	88.5	114.9	118.5	120.2	120.1	122.2	123.5	123.4	122.6
Sport vehicles, including bicycles	87.9	115.3	117.5	119.7	120.6	122.3	125.3	125.7	124.5
Toys, hobbies, other entertainment	86.5	121.5	123.9	124.7	126.0	127.4	127.8	131.9	133.3
Pet supplies and expenses	83.3	124.6	129.1	128.1	128.8	130.9	132.3	139.0	142.7
Entertainment services	82.3	143.2	150.6	155.9	160.8	166.8	172.0	178.1	183.8
Club membership	(NA)	117.0	122.5	125.2	128.4	130.7	132.8	133.3	132.1
Admissions	83.8	151.2	159.3	164.5	167.3	175.2	182.3	192.1	198.9
Tobacco and smoking products	72.0	181.5	202.7	219.8	228.4	220.0	225.7	232.8	243.7
Personal care	81.9	130.4	134.9	138.3	141.5	144.6	147.1	150.1	152.7
Personal care services	83.7	132.8	137.0	140.0	144.0	147.9	151.5	156.6	162.4
Beauty parlor services for women	83.4	133.0	137.2	139.8	143.6	147.7	150.9	155.9	161.4
Haircuts, etc. for men	84.4	131.5	135.9	140.3	144.6	147.9	153.4	158.5	165.5
Personal and educational expenses	70.9	170.2	183.7	197.4	210.7	223.2	235.5	247.5	259.7
School books and supplies	71.4	171.3	180.3	190.3	197.6	205.5	214.4	226.9	238.4
Personal and educational services	70.8	170.4	184.2	198.1	211.9	224.8	237.3	249.3	261.6
Tuition and other school fees	71.2	175.7	191.4	208.5	225.3	239.8	253.8	267.1	280.4
College tuition	70.8	175.0	192.8	213.5	233.5	249.8	264.8	279.8	294.1
Elementary and high school tuition	72.3	182.8	198.0	213.7	228.9	242.6	259.2	272.8	288.1
Day care and nursery school	(NA)	(NA)	103.2	108.3	113.6	119.6	124.5	129.4	134.3
All commodities	86.0	122.8	126.6	129.1	131.5	133.8	136.4	139.9	141.8
All commodities less food	85.7	117.4	121.3	124.2	126.3	127.9	129.8	132.6	133.4
Energy	86.0	102.1	102.5	103.0	104.2	104.6	105.2	110.1	111.5

NA Not available.

Source: U.S. Bureau of Labor Statistics, *Monthly Labor Review* and *CPI Detailed Report*, January issues.

No. 774. Consumer Price Indexes (CPI-U)—Selected Areas: 1980 to 1997

[1982-84=100, except as indicated. Represents annual averages of monthly figures. Local area CPI indexes are byproducts of the national CPI program. Each local index has a smaller sample size than the national index and is therefore, subject to substantially more sampling and other measurement error. As a result, local area indexes show greater volatility than the national index, although their long-term trends are similar. Area definitions are those established by the Office of Management and Budget in 1983. For further detail see the U.S. Bureau of Labor Statistics Handbook of Methods, Bulletin 2285, Chapter 19, the Consumer Price Index, and Report 736, the CPI: 1987 Revision. See also text, Section 15]

AREA	1980	1990	1993	1994	1995	1996	1997								
							All items	Food and beverages	Food	Housing	Apparel and upkeep	Transportation	Medical care	Entertainment	Fuel and other utilities
U.S., all items	82.4	130.7	144.5	148.2	152.4	156.9	160.5	157.7	157.3	156.8	132.9	144.3	234.6	162.5	130.8
Anchorage, AK MSA	85.5	118.6	132.2	135.0	138.5	142.7	144.8	145.8	146.3	129.4	127.0	147.0	248.9	180.3	146.4
Atlanta, GA MSA	80.3	131.7	143.4	146.7	148.7	156.0	158.9	159.5	163.3	156.4	137.0	132.5	243.5	186.6	139.1
Boston-Lawrence-Salem, MA-NH CMSA	82.6	138.9	152.9	154.9	157.4	163.3	167.9	160.4	160.6	162.5	143.8	141.6	293.1	175.4	126.0
Chicago-Gary-Lake County, IL-IN-WI CMSA	82.2	131.7	145.4	148.6	148.4	157.4	161.7	160.5	159.5	160.2	122.3	140.2	235.5	175.3	125.7
Cincinnati-Hamilton, OH-KY-IN CMSA	82.1	126.5	137.8	142.4	143.4	149.6	152.1	145.0	143.5	145.1	132.7	137.6	221.1	163.6	121.9
Cleveland-Akron-Lorain, OH CMSA	78.9	129.0	140.3	144.4	140.2	152.0	156.1	158.1	159.2	153.2	127.8	141.8	211.5	158.4	129.0
Dallas-Fort Worth, TX CMSA	81.5	125.1	137.3	141.2	144.6	148.8	151.4	157.0	154.9	138.8	137.2	142.9	225.3	168.9	128.6
Denver-Boulder, CO CMSA	78.4	120.9	135.8	141.8	144.0	153.1	158.1	148.0	150.0	147.7	104.0	165.6	265.8	155.2	126.6
Detroit-Ann Arbor, MI CMSA	85.3	128.6	139.6	144.0	143.9	152.5	156.3	151.4	150.8	149.9	135.2	149.0	214.1	160.3	126.3
Honolulu, HI MSA	83.0	138.1	160.1	164.5	168.4	170.7	171.9	159.2	159.5	177.1	117.3	166.2	217.3	147.9	137.1
Houston-Galveston-Brazoria, TX CMSA	82.7	120.6	133.4	137.9	139.4	142.7	145.4	147.7	147.5	126.1	142.1	141.4	228.4	161.6	106.9
Kansas City, MO-KS CMSA	83.6	126.0	138.1	141.3	141.7	151.6	155.8	160.0	161.0	146.1	133.4	140.7	210.0	171.0	133.8
Los Angeles-Anaheim-Riverside, CA CMSA	83.7	135.9	150.3	152.3	149.4	157.5	160.0	163.2	161.4	156.6	121.0	145.2	232.0	147.6	154.0
Miami-Fort Lauderdale, FL CMSA	81.1	128.0	139.1	143.6	146.9	153.7	158.4	165.7	166.0	150.2	153.5	147.2	219.2	153.8	119.8
Milwaukee, WI PMSA	81.4	126.2	142.1	147.0	153.5	154.7	157.7	154.5	155.5	156.1	122.9	143.7	230.5	140.1	108.0
Minneapolis-St. Paul, MN-WI MSA	78.9	127.0	139.2	143.6	144.8	151.9	155.4	163.5	161.3	140.8	145.6	144.0	218.8	170.8	120.2
New York-Northern New Jersey-Long Island, NY-NJ-CT CMSA	82.1	138.5	154.5	158.2	158.3	166.9	170.8	163.0	162.3	171.7	130.3	154.1	244.5	167.6	119.2
Philadelphia-Wilmington-Trenton, PA-NJ-DE-MD CMSA	83.6	135.8	150.2	154.6	158.3	162.8	166.5	154.3	153.4	167.3	104.0	152.8	247.8	181.8	131.9
Pittsburgh-Beaver Valley, PA CMSA	81.0	126.2	139.9	144.6	142.9	153.2	157.0	151.8	150.5	156.2	140.9	132.7	228.8	165.7	145.2
Portland-Vancouver, OR-WA CMSA	87.2	127.4	144.7	148.9	149.9	158.6	164.0	148.4	148.4	162.5	131.4	150.9	217.6	172.3	129.9
San Diego, CA MSA	79.4	138.4	150.6	154.5	147.0	160.9	163.7	161.4	159.9	163.5	126.1	152.2	236.8	161.4	123.2
San Francisco-Oakland-San Jose, CA CMSA	80.4	132.1	146.3	148.7	149.3	155.1	160.4	160.1	160.6	165.6	116.1	133.6	221.8	165.7	149.4
Seattle-Tacoma, WA CMSA	82.7	126.8	142.9	147.8	149.3	157.5	163.0	160.2	160.6	164.4	125.9	145.6	224.7	152.3	120.9
St. Louis-East St. Louis, MO-IL CMSA	82.5	128.1	137.5	141.3	144.7	149.6	152.9	155.0	153.3	145.5	123.8	143.8	226.4	164.2	123.9
Tampa-St. Petersburg-Clearwater, FL MSA ¹	(NA)	111.7	124.0	126.5	128.0	131.6	134.0	131.7	130.3	129.0	120.0	127.0	190.5	122.4	119.5
Washington-Baltimore, DC-MD-VA-WV CMSA	82.9	135.6	149.3	152.2	152.7	159.6	162.4	155.3	155.8	157.1	143.4	146.2	231.6	174.6	130.6

NA Not available. ¹ 1987=100.

Source: U.S. Bureau of Labor Statistics, *Monthly Labor Review* and *CPI Detailed Report*, January issues.

No. 775. Cost of Living Index—Selected Metropolitan Areas: Fourth Quarter 1997

[Measures relative price levels for consumer goods and services in participating areas for a midmanagement standard of living. The nationwide average equals 100, and each index is read as a percent of the national average. The index does not measure inflation, but compares prices at a single point in time. Excludes taxes. Metropolitan areas as defined by the Office of Management and Budget. For definitions and components of MSAs, see source for details]

METROPOLITAN AREAS	Com- posite index (100%)	Grocery items (16%)	Housing (28%)	Utilities (8%)	Transpor- tation (10%)	Health care (5%)	Misc. goods and services (33%)
Abilene, TX MSA	93.4	86.1	88.0	100.5	105.2	100.3	95.2
Albany, GA MSA	91.8	103.4	74.9	104.7	92.6	87.2	97.9
Albuquerque, NM MSA	103.1	101.7	105.3	102.8	96.5	115.1	101.7
Alexandria, LA MSA	95.1	97.0	87.7	112.0	100.2	80.8	97.6
Altoona, PA MSA	99.5	102.4	97.4	121.7	91.3	90.6	98.5
Amarillo, TX MSA	92.1	92.1	85.7	100.1	103.2	89.0	93.2
Anchorage, AK MSA	123.3	125.8	131.4	87.0	111.5	169.6	118.8
Anniston, AL MSA	91.1	99.9	81.4	103.5	92.2	85.2	92.8
Appleton-Oshkosh-Neenah, WI MSA	99.7	99.7	103.2	86.7	101.7	99.0	99.5
Asheville, NC MSA	104.0	96.5	110.9	119.8	107.5	90.9	99.3
Atlanta, GA MSA	99.4	102.0	97.2	93.8	102.2	103.9	99.7
Augusta-Aiken, GA-SC MSA	90.3	92.4	81.5	109.5	99.9	98.5	88.1
Austin-San Marcos, TX MSA	99.6	88.5	105.5	85.4	96.7	109.9	102.3
Bakersfield, CA MSA	102.5	108.4	89.5	116.5	111.8	107.5	103.8
Baltimore, MD PMSA	98.2	98.0	95.4	110.5	100.9	98.7	96.8
Baton Rouge, LA MSA	100.3	103.4	96.0	105.9	104.3	100.1	100.1
Beaumont-Port Arthur, TX MSA	96.1	88.1	91.5	101.3	103.0	94.9	101.0
Bellingham, WA MSA	104.6	104.5	118.8	88.2	99.6	124.7	94.4
Benton Harbor, MI MSA	107.5	106.3	117.1	102.6	101.1	99.6	104.3
Billings, MT MSA	102.5	102.6	103.5	82.3	112.4	103.7	103.7
Biloxi-Gulfport-Pascagoula, MS MSA	98.6	102.9	86.7	119.9	98.8	89.4	103.1
Binghamton, NY MSA	96.4	102.7	80.9	127.3	103.8	92.7	97.8
Birmingham, AL MSA	98.6	99.6	95.0	101.5	95.7	96.5	101.5
Bismarck, ND MSA	98.1	102.3	98.5	87.1	90.0	98.1	100.6
Bloomington, IN MSA	102.1	112.0	99.9	92.4	101.8	103.4	101.3
Boston, MA-NH PMSA	138.1	112.7	192.6	129.4	123.7	136.5	110.5
Bryan-College Station, TX MSA	90.2	86.9	81.5	110.6	87.6	91.5	94.6
Buffalo-Niagara Falls, NY MSA	97.6	107.1	89.3	125.1	103.7	91.4	92.7
Burlington, VT MSA	113.0	104.9	124.2	129.6	103.4	117.3	105.3
Canton-Massillon, OH MSA	97.1	100.5	93.2	96.1	102.4	87.1	99.3
Cedar Rapids, IA MSA	96.2	92.8	93.6	101.9	101.8	94.6	97.5
Champaign-Urbana, IL MSA	105.2	100.5	109.7	116.4	100.5	100.4	103.0
Charleston-North Charleston, SC MSA	96.8	95.1	92.8	118.4	90.9	104.2	95.9
Charleston, WV MSA	101.0	106.0	98.3	108.2	103.9	90.2	100.4
Charlotte-Gastonia-Rock Hill, NC-SC MSA	100.5	99.1	101.6	103.3	97.0	98.9	100.7
Chattanooga, TN-GA MSA	95.5	97.3	91.7	91.0	93.4	91.4	100.4
Cheyenne, WY MSA	95.8	102.4	89.9	72.4	98.2	100.9	101.6
Cincinnati, OH-KY-IN PMSA	91.1	89.1	84.7	95.0	95.5	102.8	93.1
Cincinnati, OH-KY-IN PMSA	99.5	97.4	98.1	98.2	99.4	98.7	102.2
Clarksville-Hopkinsville, TN-KY MSA	94.7	95.0	90.1	96.1	93.7	90.4	99.3
Colorado Springs, CO MSA	100.8	101.0	115.0	70.9	99.4	126.2	91.8
Columbia, MO MSA	95.7	102.9	85.4	82.2	100.6	103.3	101.4
Columbia, SC MSA	94.9	97.4	87.3	125.3	86.2	87.3	96.5
Columbus, OH MSA	102.4	98.9	105.5	120.6	101.2	91.1	99.4
Cumberland, MD-WV MSA	100.8	97.2	109.0	100.2	92.4	86.9	100.5
Dallas, TX PMSA	98.2	95.7	94.9	96.2	106.6	104.2	99.2
Davenport-Moline-Rock Island, IA-IL MSA	98.9	101.9	90.3	97.4	100.9	96.1	105.2
Dayton-Springfield, OH MSA	103.7	96.5	111.1	103.9	100.2	107.9	101.0
Daytona Beach, FL MSA	94.5	100.3	85.8	94.4	94.2	101.7	98.0
Decatur, AL MSA	95.0	97.3	85.0	88.9	102.5	97.0	101.5
Decatur, IL MSA	93.7	100.4	77.9	117.1	101.5	89.4	96.8
Denver, CO PMSA	105.9	103.2	120.2	82.7	105.4	124.1	97.6
Des Moines, IA MSA	96.5	91.7	95.5	95.9	97.5	100.7	98.9
Dover, DE MSA	101.5	109.2	93.4	113.4	99.6	99.5	102.7

See footnotes at end of table.

**No. 775. Cost of Living Index—Selected Metropolitan Areas:
Third Quarter 1997—Continued**

[See headnote, page 493]

METROPOLITAN AREAS	Com- posite index (100%)	Grocery items (16%)	Housing (28%)	Utilities (8%)	Transpor- tation (10%)	Health care (5%)	Misc. goods and services (33%)
Dubuque, IA MSA	106.7	94.7	123.3	102.7	102.6	97.8	102.0
Eau Claire, WI MSA	100.3	99.8	103.4	99.9	99.1	107.6	97.1
El Paso, TX MSA	94.6	100.5	83.5	85.6	112.7	101.6	97.1
Elkhart-Goshen, IN MSA	93.1	96.1	87.5	93.9	91.8	98.2	95.7
Elmira, NY MSA	112.5	107.7	118.6	150.6	113.0	87.8	104.8
Eugene-Springfield, OR MSA	108.7	100.4	128.3	73.4	108.8	119.1	102.8
Evansville-Henderson, IN-KY MSA	92.6	102.8	84.0	74.1	88.8	88.0	101.3
Evansville-Henderson, IN-KY MSA	96.3	99.5	96.3	90.5	93.5	91.5	97.9
Fargo-Moorhead, ND-MN MSA	98.2	96.9	90.3	98.2	95.2	107.6	104.6
Fitchburg-Leominster, MA PMSA	101.3	108.4	96.1	110.6	104.9	105.7	98.2
Flagstaff, AZ-UT MSA	112.1	109.7	131.7	92.0	120.3	109.6	99.8
Fort Collins-Loveland, CO MSA	104.9	111.2	115.6	74.1	102.2	113.4	99.5
Fort Myers-Cape Coral, FL MSA	99.4	99.7	93.3	109.5	107.2	99.8	99.9
Fort Smith, AR-OK MSA	86.2	92.8	74.7	88.3	82.3	74.7	95.4
Fort Walton Beach, FL MSA	98.6	105.6	96.0	90.0	90.8	98.0	101.8
Fort Wayne, IN MSA	91.1	98.4	85.7	95.5	91.5	90.8	90.9
Fort Worth-Arlington, TX PMSA	88.1	87.2	81.1	84.2	95.2	94.5	92.3
Fresno, CA MSA	103.7	105.7	96.8	113.4	119.5	113.5	100.2
Gadsden, AL MSA	92.8	96.7	78.7	100.7	88.5	90.7	102.4
Gainesville, FL MSA	100.8	104.6	96.8	95.1	101.0	103.5	103.2
Glens Falls, NY MSA	101.6	103.9	92.9	118.2	106.4	107.8	101.3
Grand Forks, ND-MN MSA	98.8	102.1	93.5	93.5	97.9	94.2	104.2
Grand Junction, CO MSA	99.4	103.9	101.9	79.4	110.1	103.3	96.3
Grand Rapids-Muskegon-Holland, MI MSA	104.6	104.0	112.7	105.4	110.6	103.9	96.4
Great Falls, MT MSA	103.9	103.1	105.8	80.2	103.8	102.8	108.5
Greeley, CO PMSA	102.1	110.1	106.2	78.9	101.8	109.5	99.2
Green Bay, WI MSA	97.9	93.8	103.4	84.2	98.5	107.7	96.7
Greensboro-Winston-Salem- High Point, NC MSA	100.1	98.1	105.0	104.8	102.9	88.2	97.2
Greenville-Spartanburg-Anderson, SC MSA	98.3	97.5	101.9	96.4	92.4	99.2	97.4
Greenville, NC MSA	96.1	98.2	86.7	120.1	88.5	96.3	99.4
Hagerstown, MD PMSA	97.8	93.9	95.7	97.1	99.1	97.9	101.3
Hattiesburg, MS MSA	96.8	100.3	82.0	113.6	100.7	92.8	103.4
Hickory-Morganton-Lenoir, NC MSA	97.1	98.2	91.7	102.1	88.8	85.4	104.2
Houston, TX PMSA	94.1	90.7	83.2	101.0	105.9	109.9	97.3
Huntsville, AL MSA	97.5	95.7	83.6	100.1	102.2	98.5	108.1
Indianapolis, IN MSA	98.5	102.3	93.2	93.5	99.7	99.5	101.8
Jacksonville, FL MSA	96.8	103.7	84.7	96.7	105.4	92.5	102.3
Jackson, MS MSA	91.1	87.4	92.3	103.4	94.8	84.3	89.2
Jackson, TN MSA	100.5	103.0	99.8	90.6	100.0	89.5	104.5
Janesville-Beloit, WI MSA	102.1	95.1	117.7	95.8	98.4	95.5	96.0
Johnson City-Kingsport-Bristol, TN-VA MSA	95.8	93.2	99.7	84.4	93.6	93.6	97.5
Jonesboro, AR MSA	87.0	92.4	79.0	91.3	80.6	85.2	92.2
Joplin, MO MSA	89.3	92.0	81.3	90.1	83.9	95.7	94.8
Kansas City, MO-KS MSA	96.9	98.6	90.8	91.2	99.3	105.3	100.4
Killeen-Temple, TX MSA	96.8	91.3	93.1	111.1	95.9	107.4	97.6
Knoxville, TN MSA	95.6	93.9	91.3	94.2	93.9	96.9	100.7
Lafayette, IN MSA	93.4	95.9	91.3	90.7	95.9	95.0	93.8
Lafayette, LA MSA	98.1	98.4	99.0	85.6	102.1	90.2	100.6
Lake Charles, LA MSA	96.8	93.8	91.0	111.9	98.6	76.9	102.5

See footnotes at end of table.

**No. 775. Cost of Living Index—Selected Metropolitan Areas:
Fourth Quarter 1997—Continued**

[See headnote, page 493]

METROPOLITAN AREAS	Com- posite index (100%)	Grocery items (16%)	Housing (28%)	Utilities (8%)	Transpor- tation (10%)	Health care (5%)	Misc. goods and services (33%)
Lancaster, PA MSA	107.4	98.0	113.2	106.3	116.4	96.8	106.8
Lansing-East Lansing, MI MSA	108.5	109.0	130.4	80.2	95.7	105.9	100.6
Las Cruces, NM MSA	100.0	101.3	99.7	100.3	93.3	96.5	101.9
Las Vegas, NV-AZ MSA	94.1	103.2	78.8	114.1	99.9	103.3	94.5
Lawrence, KS MSA	102.3	91.8	111.4	90.7	99.7	93.0	105.0
Lawton, OK MSA	93.1	95.6	80.7	92.9	95.6	92.6	102.0
Lexington, KY MSA	97.9	100.1	94.8	85.0	95.6	102.9	102.3
Lima, OH MSA	99.5	101.4	98.2	95.7	95.7	85.1	104.2
Lincoln, NE MSA	101.9	96.8	116.7	87.4	101.0	88.6	98.0
Little Rock-North Little Rock, AR MSA	89.9	104.4	81.1	109.2	94.6	69.0	88.2
Los Angeles-Long Beach, CA PMSA	117.6	116.3	133.9	114.2	112.7	112.7	107.4
Louisville, KY-IN MSA	96.4	99.8	90.8	94.5	104.0	92.3	98.6
Lubbock, TX MSA	91.1	90.3	86.6	74.4	100.3	92.0	96.6
Macon, GA MSA	96.0	103.4	88.6	105.4	94.7	89.1	97.9
Madison, WI MSA	110.3	98.3	125.9	91.1	102.9	107.2	110.1
Mansfield, OH MSA	97.6	100.7	94.5	120.5	95.3	88.1	95.6
McAllen-Edinburg-Mission, TX MSA	95.6	88.2	95.8	93.9	89.7	91.3	101.9
Memphis, TN-AR-MS MSA	93.2	97.5	90.4	80.5	99.6	96.4	94.3
Miami, FL PMSA	106.7	105.7	107.6	100.1	113.0	105.7	106.6
Minneapolis-St. Paul, MN-WI MSA	103.1	100.0	97.5	100.6	112.9	125.6	103.1
Mobile, AL MSA	93.6	100.0	82.1	104.1	95.4	85.9	98.6
Monroe, LA MSA	99.3	93.5	85.3	144.5	98.9	92.0	104.6
Montgomery AL MSA	100.5	95.7	96.2	100.0	99.5	92.9	108.2
Muncie, IN MSA	96.1	96.3	98.2	94.2	96.6	94.9	94.7
Myrtle Beach, SC MSA	97.2	101.0	96.7	106.1	95.4	92.6	95.1
Nashville, TN MSA	96.8	103.2	94.6	97.1	98.2	93.8	95.8
Nassau-Suffolk, NY PMSA	143.4	124.4	171.4	156.7	121.4	165.8	127.5
New Haven-Meriden, CT PMSA	126.0	115.6	147.8	158.0	117.5	123.6	107.6
New Orleans, LA MSA	94.3	97.7	84.4	134.8	96.9	75.9	94.0
New York, NY PMSA	237.7	144.4	478.8	175.1	124.0	187.1	133.7
Odessa-Midland, TX MSA	90.7	89.7	79.3	82.6	100.3	93.8	99.6
Oklahoma City, OK MSA	91.8	91.1	80.3	96.3	94.8	92.1	99.9
Omaha, NE-IA MSA	92.5	95.9	91.0	94.0	99.2	89.2	90.5
Orlando, FL MSA	100.0	99.9	95.9	99.3	99.5	109.0	102.1
Panama City, FL MSA	95.8	94.2	99.3	89.0	92.0	99.5	95.6
Pensacola, FL MSA	93.9	104.1	78.6	87.0	94.5	109.2	100.7
Peoria-Pekin, IL MSA	103.8	99.1	104.4	95.0	106.0	101.9	107.3
Philadelphia, PA-NJ PMSA	123.6	107.9	142.7	167.9	120.1	105.5	108.5
Phoenix-Mesa, AZ MSA	103.6	104.6	101.0	105.3	114.3	114.4	100.1
Pocatello, ID MSA	93.6	100.5	89.7	74.7	96.6	99.6	96.2
Portland-Vancouver, OR-WA PMSA	107.3	101.6	119.9	76.2	115.0	122.0	102.1
Pueblo, CO MSA	92.2	108.9	81.5	77.7	94.8	108.3	93.1
Raleigh-Durham-Chapel Hill, NC MSA	104.1	101.0	113.0	109.2	97.0	105.1	98.6
Rapid City, SD MSA	100.8	102.4	97.8	100.8	98.4	96.6	103.9
Reading, PA MSA	105.5	101.9	105.3	120.3	96.9	89.9	109.1
Richland-Kennewick-Pasco, WA MSA	99.3	100.1	95.2	79.5	100.8	129.8	101.2
Richmond-Petersburg, VA MSA	103.9	99.5	104.2	125.8	106.7	107.6	99.0
Riverside-San Bernardino, CA PMSA	106.4	105.0	105.8	100.0	115.2	124.7	103.4
Roanoke, VA MSA	95.2	99.7	93.0	87.1	94.3	94.0	97.2
Rochester, MN MSA	101.2	95.6	99.9	97.6	110.3	99.3	103.8
Rockford, IL MSA	101.8	98.0	104.6	103.9	98.7	101.9	101.6
Salem, OR PMSA	102.0	94.3	108.3	74.2	107.5	118.5	102.7
Salinas, CA MSA	131.0	122.2	171.6	96.7	123.2	145.0	108.8
Salt Lake City-Ogden, UT MSA	99.5	107.0	95.0	79.3	109.1	103.1	101.2
San Angelo, TX MSA	91.9	88.2	78.5	85.4	102.8	93.5	103.4
San Antonio, TX MSA	92.6	92.9	88.5	89.6	93.6	95.1	96.0
Santa Barbara-Santa Maria-Lompoc, CA MSA	108.9	111.4	118.9	107.4	114.9	128.0	94.5
Santa Fe, NM MSA	113.7	107.4	134.5	91.7	113.4	105.8	106.1
Sarasota-Bradenton, FL MSA	105.9	98.5	120.2	92.7	99.4	105.4	102.5

See footnotes at end of table.

No. 775. Cost of Living Index—Selected Metropolitan Areas: Fourth Quarter 1997—Continued

[See headnote, page 493]

METROPOLITAN AREAS	Com- posite index (100%)	Grocery items (16%)	Housing (28%)	Utilities (8%)	Transpor- tation (10%)	Health care (5%)	Misc. goods and services (33%)
Scranton-Wilkes Barre-Hazleton, PA MSA	99.7	100.3	100.5	113.9	98.9	88.7	97.6
Sheboygan, WI MSA	98.8	104.0	105.4	76.6	99.2	98.1	96.2
Sioux Falls, SD MSA	95.4	99.9	90.9	96.9	97.4	99.7	95.3
South Bend, IN MSA	92.3	92.7	90.3	89.2	89.3	103.4	93.5
Spokane, WA MSA	102.5	101.4	115.1	59.8	96.6	125.7	100.1
Springfield, MO MSA	93.3	96.1	87.3	83.2	96.7	96.7	97.8
St. Cloud, MN MSA	98.7	100.2	88.8	99.9	106.4	102.7	103.2
St. Joseph, MO MSA	94.1	92.9	93.4	81.4	90.3	101.8	98.1
St. Louis, MO-IL MSA	98.1	99.7	97.4	94.8	98.6	110.6	96.4
Sumter, SC MSA	91.4	94.6	74.0	112.3	96.0	92.1	98.2
Syracuse, NY MSA	102.4	109.1	90.0	135.4	107.5	105.2	99.9
Tacoma, WA PMSA	99.4	101.9	101.9	70.1	107.4	142.6	93.0
Tallahassee, FL MSA	100.0	103.3	97.3	92.4	100.8	107.6	100.9
Tampa-St. Petersburg-Clearwater, FL MSA	98.6	103.3	89.6	116.6	102.2	109.9	96.6
Toledo, OH MSA	101.8	101.6	91.1	128.4	106.9	100.7	103.3
Tucson, AZ MSA	98.7	107.2	93.6	116.5	94.3	107.1	94.4
Tulsa, OK MSA	92.8	95.9	83.2	92.0	83.2	103.2	100.5
Tyler, TX MSA	96.6	92.2	87.2	101.6	103.4	98.4	103.4
Utica-Rome, NY MSA	102.2	101.7	94.9	134.8	107.1	100.3	99.7
Victoria, TX MSA	93.4	82.9	88.0	103.3	110.0	93.0	96.3
Visalia-Tulare-Porterville, CA MSA	107.5	104.7	104.9	112.6	111.3	114.4	107.6
Waco, TX MSA	90.8	86.1	78.9	113.5	102.2	82.9	96.0
Washington, DC-MD-VA-WV PMSA	121.7	109.7	150.4	91.7	126.1	116.3	110.2
Wausau, WI MSA	102.4	93.4	116.5	92.1	92.7	108.6	98.9
West Palm Beach-Boca Raton, FL MSA	106.9	100.5	111.2	103.2	108.5	110.4	106.1
Wichita, KS MSA	96.6	91.6	88.3	111.6	99.7	108.3	99.4
Williamsport, PA MSA	101.8	95.5	106.0	135.8	95.7	91.9	96.4
Wilmington-Newark, DE-MD PMSA	111.3	110.9	119.1	128.7	99.6	106.0	104.8
Wilmington, NC MSA	101.6	98.7	108.5	116.7	93.0	97.5	96.6
Yakima, WA MSA	103.8	102.6	117.2	87.9	104.8	132.5	91.3
York, PA MSA	96.6	96.6	86.6	112.0	108.9	92.1	98.7
Youngstown-Warren, OH MSA	96.5	99.7	97.9	118.3	89.5	88.6	91.7
Yuma, AZ MSA	107.8	106.2	105.0	144.1	115.5	112.2	99.3

Source: ACCRA, 4232 King St., Alexandria, VA 22302-1507, ACCRA Cost of Living Index, Fourth Quarter 1997 (copyright).

No. 776. Annual Percent Changes in Consumer Prices—United States and OECD Countries: 1990 to 1996

[Covers member countries of Organization for Economic Cooperation (OECD). For consumer price indexes for OECD countries, see Section 30]

COUNTRY	1990 ¹	1991	1992	1993	1994	1995	1996
United States	5.4	4.2	3.0	3.0	2.6	2.8	2.9
OECD	5.8	5.2	4.0	3.6	4.3	5.5	4.9
Australia	7.3	3.2	1.0	1.8	1.9	4.6	2.6
Canada	4.8	5.6	1.5	1.8	0.2	2.2	1.6
Japan	3.1	3.3	1.7	1.3	0.7	-0.1	0.1
New Zealand	6.1	2.6	1.0	1.3	1.8	3.8	2.3
Austria	3.3	3.3	4.0	3.6	3.0	2.2	1.9
Belgium	3.4	3.2	2.4	2.8	2.4	1.5	2.1
Denmark	2.7	2.4	2.1	1.3	2.0	2.1	2.1
Finland	6.1	4.3	2.9	2.2	1.1	1.0	0.6
France	3.4	3.2	2.4	2.1	1.7	1.7	2.0
Germany	2.7	3.5	4.0	3.6	2.7	1.8	1.5
Greece	20.4	19.5	15.9	14.4	10.9	8.9	8.2
Ireland	3.3	3.2	3.1	1.4	2.3	2.5	1.7
Italy ²	6.1	6.5	5.3	4.2	3.9	5.4	3.8
Luxembourg	3.7	3.1	3.2	3.6	2.2	1.9	1.4
Netherlands	2.5	3.9	3.2	2.6	2.8	1.9	2.1
Norway	4.1	3.4	2.3	2.3	1.4	2.5	1.3
Portugal ³	13.4	11.4	8.9	6.5	5.2	4.1	3.1
Spain	6.7	5.9	5.9	4.6	4.7	4.7	3.6
Sweden	10.5	9.3	2.3	4.6	2.4	2.9	0.8
Switzerland	5.4	5.8	4.0	3.3	0.9	1.8	0.8
Turkey ³	60.3	66.0	70.1	66.1	105.1	89.1	80.4
United Kingdom	9.5	5.9	3.7	1.6	2.5	3.4	2.4

¹Change from 1989. ²Households of wage and salary earners. ³Excludes rent.Source: Organization for Economic Cooperation and Development, Paris, France, *Main Economic Indicators*, monthly (copyright).

No. 777. Producer Price Indexes, by Stage of Processing: 1960 to 1997

[1982=100. Minus sign (-) indicates decline. See text, Section 15]

YEAR	CRUDE MATERIALS				Inter- mediate materials, supplies, and compon- ents	FINISHED GOODS		CONSUMER FOODS		Finished consumer goods excl. food
	Total	Food- stuffs and feedstuffs	Fuel	Crude nonfood materials except fuel		Con- sumer goods	Capit- al equip- ment	Crude	Proc- essed	
1960	30.4	38.4	10.5	26.9	30.8	33.6	32.8	39.8	35.2	33.5
1961	30.2	37.9	10.5	27.2	30.6	33.6	32.9	38.0	35.3	33.4
1962	30.5	38.6	10.4	27.1	30.6	33.7	33.0	38.4	35.6	33.4
1963	29.9	37.5	10.5	26.7	30.7	33.5	33.1	37.8	35.2	33.4
1964	29.6	36.6	10.5	27.2	30.8	33.6	33.4	38.9	35.2	33.3
1965	31.1	39.2	10.6	27.7	31.2	34.2	33.8	39.0	36.8	33.6
1966	33.1	42.7	10.9	28.3	32.0	35.4	34.6	41.5	39.2	34.1
1967	31.3	40.3	11.3	26.5	32.2	35.6	35.8	39.6	38.8	34.7
1968	31.8	40.9	11.5	27.1	33.0	36.5	37.0	42.5	40.0	35.5
1969	33.9	44.1	12.0	28.4	34.1	37.9	38.3	45.9	42.3	36.3
1970	35.2	45.2	13.8	29.1	35.4	39.1	40.1	46.0	43.9	37.4
1971	36.0	46.1	15.7	29.4	36.8	40.2	41.7	45.8	44.7	38.7
1972	39.9	51.5	16.8	32.3	38.2	41.5	42.8	48.0	47.2	39.4
1973	54.5	72.6	18.6	42.9	42.4	46.0	44.2	63.6	55.8	41.2
1974	61.4	76.4	24.8	54.5	52.5	53.1	50.5	71.6	63.9	48.2
1975	61.6	77.4	30.6	50.0	58.0	58.2	58.2	71.7	70.3	53.2
1976	63.4	76.8	34.5	54.9	60.9	60.4	62.1	76.7	69.0	56.5
1977	65.5	77.5	42.0	56.3	64.9	64.3	66.1	79.5	72.7	60.6
1978	73.4	87.3	48.2	61.9	69.5	69.4	71.3	85.8	79.4	64.9
1979	85.9	100.0	57.3	75.5	78.4	77.5	77.5	92.3	86.8	73.5
1980	95.3	104.6	69.4	91.8	90.3	88.6	85.8	93.9	92.3	87.1
1981	103.0	103.9	84.8	109.8	98.6	96.6	94.6	104.4	97.2	96.1
1982	100.0	100.0	100.0	100.0	100.0	100.0	100.0	100.0	100.0	100.0
1983	101.3	101.8	105.1	98.8	100.6	101.3	102.8	102.4	100.9	101.2
1984	103.5	104.7	105.1	101.0	103.1	103.3	105.2	111.4	104.9	102.2
1985	95.8	94.8	102.7	94.3	102.7	103.8	107.5	102.9	104.8	103.3
1986	87.7	93.2	92.2	76.0	99.1	101.4	109.7	105.6	107.4	98.5
1987	93.7	96.2	84.1	88.5	101.5	103.6	111.7	107.1	109.6	100.7
1988	96.0	106.1	82.1	85.9	107.1	106.2	114.3	109.8	112.7	103.1
1989	103.1	111.2	85.3	95.8	112.0	112.1	118.8	119.6	118.6	108.9
1990	108.9	113.1	84.8	107.3	114.5	118.2	122.9	123.0	124.4	115.3
1991	101.2	105.5	82.9	97.5	114.4	120.5	126.7	119.3	124.4	118.7
1992	100.4	105.1	84.0	94.2	114.7	121.7	129.1	107.6	124.4	120.8
1993	102.4	108.4	87.1	94.1	116.2	123.0	131.4	114.4	126.5	121.7
1994	101.8	106.5	82.4	97.0	118.5	123.3	134.1	111.3	127.9	121.6
1995	102.7	105.8	72.1	105.8	124.9	125.6	136.7	118.8	129.8	124.0
1996	113.8	121.5	92.6	105.7	125.7	129.5	138.3	129.2	133.8	127.6
1997 prel .	111.1	112.2	101.3	103.5	125.6	130.2	138.2	126.6	135.1	128.2
PERCENT CHANGE										
1960	-2.3	-1.0	1.0	3.7	-	0.9	0.3	6.7	1.4	0.6
1961	-0.7	-1.3	-	-4.3	-0.6	-	0.3	-4.5	0.3	-0.3
1962	1.0	1.8	-1.0	1.1	-	0.3	0.3	1.1	0.8	-
1963	-2.0	-2.8	1.0	-0.4	0.3	-0.6	0.3	-1.6	-1.1	-
1964	-1.0	-2.4	-	-1.5	0.3	0.3	0.9	2.9	-	-0.3
1965	5.1	7.1	1.0	1.9	1.3	1.8	1.2	0.3	4.5	0.9
1966	6.4	8.9	2.8	1.8	2.6	3.5	2.4	6.4	6.5	1.5
1967	-5.4	-5.6	3.7	-2.2	0.6	0.6	3.5	-4.6	-1.0	1.8
1968	1.6	1.5	1.8	-6.4	2.5	2.5	3.4	7.3	3.1	2.3
1969	6.6	7.8	4.3	2.3	3.3	3.8	3.5	8.0	5.7	2.3
1970	3.8	2.5	15.0	4.8	3.8	3.2	4.7	0.2	3.8	3.0
1971	2.3	2.0	13.8	2.5	4.0	2.8	4.0	-0.4	1.8	3.5
1972	10.8	11.7	7.0	1.0	3.8	3.2	2.6	4.8	5.6	1.8
1973	36.6	41.0	10.7	9.9	11.0	10.8	3.3	32.5	18.2	4.6
1974	12.7	5.2	33.3	32.8	23.8	15.4	14.3	12.6	14.5	17.0
1975	0.3	1.3	23.4	27.0	10.5	9.6	15.2	0.1	10.0	10.4
1976	2.9	-0.8	12.7	-8.3	5.0	3.8	6.7	7.0	-1.8	6.2
1977	3.3	0.9	21.7	9.8	6.6	6.5	6.4	3.7	5.4	7.3
1978	12.1	12.6	14.8	2.6	7.1	7.9	7.9	7.9	9.2	7.1
1979	17.0	14.5	18.9	9.9	12.8	11.7	8.7	7.6	9.3	13.3
1980	10.9	4.6	21.1	22.0	15.2	14.3	10.7	1.7	6.3	18.5
1981	8.1	-0.7	22.2	21.6	9.2	9.0	10.3	11.2	5.3	10.3
1982	-2.9	-3.8	17.9	19.6	1.4	3.5	5.7	-4.2	2.9	4.1
1983	1.3	1.8	5.1	-8.9	0.6	1.3	2.8	2.4	0.9	1.2
1984	2.2	2.8	-	-1.2	2.5	2.0	2.3	8.8	4.0	1.0
1985	-7.4	-9.5	-2.3	2.2	-0.4	0.5	2.2	-7.6	-0.1	1.1
1986	-8.5	-1.7	-10.2	-6.6	-3.5	-2.3	2.0	2.6	2.5	-4.6
1987	6.8	3.2	-8.8	-19.4	2.4	2.2	1.8	1.4	2.0	2.2
1988	2.5	10.3	-2.4	16.4	5.5	2.5	2.3	2.5	2.8	2.4
1989	7.4	4.8	3.9	-2.9	4.6	5.6	3.9	8.9	5.2	5.6
1990	5.6	1.7	-0.6	11.5	2.2	5.4	3.5	2.8	4.9	5.9
1991	-7.1	-6.7	-2.2	12.0	-0.1	1.9	3.1	-3.0	-	2.9
1992	-0.8	-0.4	1.3	-9.1	0.3	1.0	1.9	-9.8	-	1.8
1993	2.0	3.1	3.7	-3.4	1.3	1.1	1.8	6.3	1.7	0.7
1994	-0.6	-1.8	-5.4	-0.1	2.0	0.2	2.1	-2.7	1.1	-0.1
1995	0.9	-0.7	-12.5	3.1	5.4	1.9	1.9	6.7	1.5	2.0
1996	10.8	14.8	28.4	-0.1	0.6	3.1	1.2	8.8	3.1	2.9
1997 prel..	-2.4	-7.7	9.4	-2.1	-0.6	0.5	-0.1	-2.0	1.0	0.5

- Represents or rounds to zero.

Source: U.S. Bureau of Labor Statistics, *Producer Price Indexes*, monthly and annual.

No. 778. Producer Price Indexes for Selected Commodity Groupings: 1990 to 1997

[1982=100, except as indicated]

COMMODITY	1990	1991	1992	1993	1994	1995	1996	1997
All commodities	116.3	116.5	117.2	118.9	120.4	124.7	127.7	127.6
Fresh fruits and melons	118.1	129.9	84.0	84.5	82.7	85.8	100.8	99.4
Fresh and dry vegetables	118.1	103.8	115.0	135.2	129.0	144.4	135.0	123.1
Wheat	87.6	79.4	98.5	98.4	104.8	118.6	136.6	108.2
Slaughter cattle	122.5	115.8	115.4	116.7	105.8	99.5	95.8	97.9
Slaughter hogs	94.1	82.7	70.7	76.1	65.9	70.2	88.6	87.0
Slaughter turkeys	116.9	109.5	106.6	113.1	119.6	120.3	121.5	112.9
Wool	89.6	69.4	81.6	56.5	80.5	99.6	78.1	91.9
Milk eligible for fluid use	101.6	90.0	96.7	94.6	96.3	94.1	108.5	98.1
Milk, manufacturing grade	97.5	87.9	94.3	93.3	94.3	92.9	105.7	95.3
Alfalfa hay	169.2	135.7	124.5	167.8	194.6	164.3	172.5	203.9
Oilseeds	112.1	106.4	107.5	115.9	117.4	112.6	139.4	140.8
Bakery products	141.0	146.6	152.5	156.6	160.0	164.3	169.8	173.9
Flour and flour base mixes and doughs	107.9	103.8	111.5	112.0	113.8	120.8	130.6	122.3
Milled rice	102.5	109.9	108.8	101.3	118.3	113.1	129.4	127.3
Meats	117.0	113.5	106.7	110.6	104.7	102.9	109.0	111.6
Processed poultry	113.6	109.9	109.0	111.7	114.7	114.2	119.7	117.4
Unprocessed and packaged fish	147.2	149.5	156.1	156.5	161.4	170.8	165.9	178.1
Fluid milk products	123.9	121.2	123.9	122.7	125.3	124.9	138.1	135.7
Butter	71.3	69.5	59.3	54.4	50.4	55.4	71.0	76.6
Natural, processed, and imitation cheese	111.7	107.6	111.0	111.6	111.9	112.6	122.1	116.6
Ice cream and frozen desserts	123.1	123.1	124.9	127.2	127.4	128.2	132.6	137.9
Dry, condensed, and evaporated milk products	118.5	117.0	128.0	132.3	134.3	133.6	142.1	139.2
Canned fruits and juices	127.0	128.6	134.5	126.2	125.9	129.4	137.5	137.6
Frozen fruits, juices and ades	139.0	116.3	125.9	110.7	111.9	115.9	123.9	117.2
Dried and dehydrated fruits	106.7	111.8	114.6	117.9	121.0	121.0	124.1	124.9
Frozen vegetables	118.4	117.6	116.4	120.9	125.9	124.2	125.4	125.8
Sugar and confectionery	123.1	128.4	127.7	127.9	132.5	134.0	137.5	137.5
Alcoholic beverages	117.2	123.7	126.1	126.0	124.8	128.5	132.8	135.1
Soft drinks	122.3	125.5	125.6	126.2	127.0	133.1	134.0	133.2
Packaged beverage materials	115.7	111.5	105.1	105.2	122.2	142.4	127.6	147.9
Animal fats and oils	93.4	93.7	92.9	100.0	117.8	132.4	140.1	148.2
Crude vegetable oils	115.8	103.0	97.1	110.5	135.0	130.0	118.1	116.6
Shortening and cooking oil	123.2	116.5	115.1	122.9	138.6	142.5	138.5	137.8
Jams, jellies, and preserves	122.2	126.5	126.4	125.9	127.1	128.9	129.8	129.1
Pickles and pickle products	139.5	148.6	153.5	158.0	162.8	164.7	172.0	172.5
Processed eggs	121.0	117.1	94.7	108.2	104.7	101.3	126.4	122.6
Frozen specialties	131.9	134.4	135.7	136.3	137.6	138.7	141.1	142.6
Vegetable cake and meal feeds	85.4	83.1	86.0	92.0	85.6	79.6	116.4	127.9
Formula feeds	110.2	109.4	111.3	113.5	116.5	115.5	143.2	133.3
Apparel	117.5	119.6	122.2	123.2	123.5	124.2	125.1	125.7
Cattle hides	217.8	173.4	171.4	180.2	200.9	209.9	186.5	196.1
Men's footwear, excluding athletic	132.8	136.9	140.5	142.8	144.7	150.1	152.4	156.4
Women's footwear, excluding athletic	118.8	120.7	124.2	126.9	127.2	129.0	132.1	132.2
Children's footwear, except athletic	130.2	135.5	132.9	137.7	138.8	140.6	142.0	144.0
Luggage and small leather goods	126.7	130.5	133.2	134.4	133.4	133.4	133.8	135.8
Bituminous coal	97.4	97.1	94.9	96.0	96.6	94.9	94.4	96.2
Natural gas (to pipelines)	80.4	79.1	80.6	84.7	78.8	66.6	91.2	101.7
Commercial electric power	115.3	122.3	124.4	127.2	128.8	131.7	131.6	131.7
Industrial electric power	119.6	128.1	129.6	130.6	129.2	130.8	131.6	130.8
Gasoline	78.7	69.9	68.1	63.9	61.7	63.7	72.8	71.9
Light fuel oils	73.5	65.2	61.6	59.8	55.9	56.6	69.3	64.3
Residual fuels	57.7	49.1	45.9	49.6	48.2	52.6	59.8	59.5
Prepared paint	124.8	129.9	131.6	133.2	135.3	142.1	147.2	152.1
Paint materials	136.3	135.8	131.1	131.5	132.1	139.4	141.3	141.5
Medicinal and botanical chemicals	102.2	109.0	111.3	120.7	125.4	128.3	128.6	133.4
Preparations, ethical (prescription)	200.8	217.5	231.7	242.2	250.0	257.0	265.4	273.5
Mixed fertilizers	103.3	105.2	102.6	99.0	105.7	111.1	114.7	113.6
Fertilizer materials	95.2	99.0	94.5	90.7	103.7	119.0	123.5	120.7
Soap and synthetic detergents	117.7	117.5	120.6	122.2	121.4	122.9	125.2	126.4
Cosmetics and other toilet preparations	121.6	124.6	126.7	129.1	128.4	129.0	130.2	130.6
Rubber, except natural rubber	111.2	105.5	103.3	105.3	108.7	125.5	121.5	118.7
Tires, tubes, tread, & repair materials	96.8	98.2	98.9	98.9	98.6	100.2	97.0	95.2
Plastic construction products	117.2	115.1	112.7	116.6	122.9	133.8	130.9	128.2
Softwood lumber	123.8	125.7	148.6	193.0	198.1	178.5	189.5	206.5
Hardwood lumber	131.0	128.5	140.7	163.3	168.3	167.0	163.9	174.1
Prefabricated structural members	122.3	122.4	132.7	159.7	169.3	163.5	167.5	177.8
Softwood plywood	119.6	120.8	147.2	169.7	176.8	188.1	173.7	175.5
Hardwood plywood and related products	102.7	102.8	106.9	115.4	122.3	122.2	124.9	127.1
Boxes	119.1	123.6	127.5	138.2	141.3	145.0	147.1	149.2
Woodpulp	151.3	119.2	118.9	104.2	115.9	183.2	133.1	128.6
Wastepaper	138.9	121.4	117.5	117.4	209.5	371.1	141.6	163.3
Paper	128.8	126.9	123.2	123.8	126.0	159.0	149.4	143.9
Paperboard	135.7	130.2	134.3	130.0	140.5	183.1	155.1	144.4
Converted paper and paperboard products	135.2	134.8	134.8	133.7	136.7	157.0	153.4	148.4
Hardboard, particleboard & fiberboard products	107.5	106.5	114.9	128.1	139.0	139.6	131.6	123.9
Iron ore	83.3	83.6	83.7	82.7	82.7	91.8	96.7	96.3
Iron and steel scrap	166.0	147.6	139.2	172.5	192.9	202.7	191.1	188.9
Foundry and forge shop products	117.2	119.0	120.1	121.3	123.9	129.3	132.6	134.1
Steel mill products	114.5	112.1	109.5	106.4	108.2	113.4	115.6	116.4
Primary nonferrous metals	149.2	133.4	114.0	108.1	98.1	115.7	126.2	126.2
Metal cans and can components	111.4	114.0	115.6	113.9	109.1	106.6	107.4	105.2
Hand and edge tools	127.7	134.8	141.6	146.1	149.1	152.6	160.9	163.2
Vitreous china fixtures	123.3	125.6	127.0	127.6	127.0	128.9	131.8	131.5

See footnotes at end of table.

**No. 778. Producer Price Indexes for Selected Commodity Groupings:
1990 to 1997—Continued**

[1982=100, except as indicated]

COMMODITY	1990	1991	1992	1993	1994	1995	1996	1997
Brass fittings	155.8	162.5	167.7	172.3	177.3	185.1	192.0	198.0
Steam and hot water equipment	132.6	135.2	138.0	138.9	138.6	141.6	144.7	147.2
Warm air furnaces	129.6	131.5	134.8	137.3	138.0	141.2	142.9	143.9
Conversion burners and parts	134.4	138.5	142.3	147.1	150.1	154.8	157.9	157.4
Water heaters, domestic	124.3	124.5	127.9	133.4	137.9	146.2	152.9	154.1
Metal doors, sash, and trim	131.4	134.6	135.0	136.6	142.0	156.5	159.3	161.0
Metal tanks	113.8	114.9	115.0	113.9	114.2	118.6	120.9	122.9
Sheet metal products	129.2	129.0	128.0	128.9	131.7	138.9	139.6	140.8
Struct., arch., pre-eng metal products	117.0	115.7	114.7	115.8	120.7	127.7	131.7	135.2
Bolts, nuts, screws, rivets, and washers	116.3	118.3	118.7	119.8	120.9	123.0	125.3	127.1
Lighting fixtures	127.5	129.8	131.0	131.2	132.2	135.9	137.3	137.4
Farm and garden tractors	123.2	128.1	133.4	135.3	138.3	141.5	144.8	146.0
Agricultural machinery excl. tractors	121.5	125.4	128.2	131.8	136.1	142.5	146.9	150.3
Agricultural equipment	119.2	121.3	124.0	129.9	132.1	140.5	143.3	142.3
Power cranes, excavators, and equipment	129.7	133.8	141.3	147.4	148.9	151.9	156.0	159.2
Construction equipment for mounting	119.9	121.3	121.8	125.0	126.1	130.1	133.5	140.5
Specialized construction machinery	124.3	129.1	128.4	129.6	135.5	138.2	140.6	(NA)
Portable air compressors	117.3	117.7	120.4	121.2	120.7	123.1	123.7	124.1
Tractors, other than farm	124.0	128.2	132.7	137.0	140.3	143.1	146.5	148.5
Power driven hand tools	121.1	124.5	127.2	129.5	132.9	135.1	137.0	138.1
Welding machines and equipment	127.5	132.8	137.7	142.5	147.8	153.0	157.4	160.7
Industrial process furnaces and ovens	127.3	131.0	134.2	137.1	139.1	141.9	146.7	(NA)
Cutting tools and accessories	118.5	121.5	123.9	125.8	128.1	131.9	135.1	136.9
Abrasive products	122.3	126.6	130.5	132.4	135.1	138.2	141.3	142.7
Metal cutting machine tools	129.8	134.6	138.9	141.1	143.1	148.0	152.6	156.0
Metal forming machine tools	128.7	133.5	135.9	138.4	141.9	145.7	149.6	153.9
Pumps, compressors, and equipment	119.2	124.6	129.1	132.8	135.2	139.4	143.5	146.5
Elevators, escalators, and other lifts	110.1	108.7	109.4	110.7	112.4	113.0	113.7	114.8
Industrial material handling equipment	115.0	117.4	118.4	120.2	122.4	125.3	127.4	129.7
Mechanical power transmission equipment	125.3	129.1	132.1	136.2	140.5	146.9	151.5	(NA)
Scales and balances	109.1	109.4	105.1	105.6	106.7	108.9	111.5	(NA)
Fans and blowers, except portable	123.7	127.2	129.1	131.8	134.2	138.9	142.4	(NA)
Electronic computers (Dec. 1990=100)	(NA)	88.9	73.2	62.9	58.0	51.8	42.4	33.2
Computer storage devices (Dec. 1992=100)	(NA)	(NA)	(NA)	86.8	74.9	65.7	55.2	47.5
Computer terminals and parts (Dec. 1993=100)	(NA)	(NA)	(NA)	(NA)	99.8	96.6	95.9	95.6
Computer peripheral equipment and parts (Dec. 1993=100)	(NA)	(NA)	(NA)	(NA)	97.5	95.2	91.6	88.5
Food products machinery	133.4	139.3	143.8	147.3	152.6	157.5	161.1	165.4
Textile machinery and equipment	128.8	135.0	138.9	143.7	144.9	146.7	148.4	152.1
Woodworking machinery and equipment	122.1	124.5	128.4	132.8	133.4	137.1	141.9	143.9
Printing trades machinery and equipment	124.9	126.5	126.8	129.5	130.9	133.6	136.8	138.8
Wiring devices	132.2	133.9	134.8	138.6	141.5	147.2	151.2	154.0
Integrating and measuring instruments	126.7	131.0	134.3	136.6	138.9	143.3	143.4	144.7
Motors, generators, motor generator sets	132.9	134.9	136.6	138.6	140.2	143.9	145.6	144.7
Transformers and power regulators	120.9	123.9	123.5	123.0	125.3	128.9	129.7	129.5
Switchgear, switchboard, etc., equipment	124.4	128.5	131.5	134.6	136.8	140.3	142.6	145.6
Communication and related equipment	106.1	107.4	109.9	109.1	110.8	112.1	113.0	114.0
Electric lamps/bulbs and parts	130.7	131.9	132.0	134.8	135.0	137.3	136.7	140.0
Electronic components and accessories	118.4	118.6	117.5	117.7	116.6	113.6	108.9	104.0
Mining machinery and equipment	121.0	125.2	127.4	129.5	131.1	135.6	139.0	140.3
Office and store machines and equipment	109.5	109.8	111.0	111.0	111.3	111.5	112.0	112.4
Internal combustion engines	120.2	126.0	128.4	130.2	132.9	135.6	138.8	140.1
Major appliances	108.7	108.3	108.2	109.6	109.5	108.9	109.3	106.7
Electric housewares and fans	109.7	111.8	112.6	113.4	112.0	110.8	110.6	107.9
Electric lamps	133.0	133.5	134.1	138.6	140.4	142.7	143.9	146.0
Television receivers	78.9	78.9	77.1	74.5	74.3	72.2	71.9	69.4
Household glassware	132.5	136.0	141.6	142.9	147.4	153.2	157.3	161.3
Lawn/garden equipment excl., garden tractors	123.0	124.7	125.3	126.2	128.4	130.4	132.3	132.2
Cutlery, razors and razor blades	129.8	140.9	142.3	146.1	150.0	154.1	158.4	162.5
Flat glass	107.5	105.9	106.5	107.3	110.5	113.2	110.0	108.4
Construction sand/gravel/crushed stone	125.4	128.6	130.6	134.0	137.9	142.3	145.6	148.2
Ceramic floor and wall tile	132.5	131.1	132.6	133.5	135.5	138.0	138.3	138.4
Insulation materials	108.4	110.8	102.3	105.8	111.9	118.8	118.9	117.7
Motor vehicles	120.4	125.9	129.9	134.2	139.1	140.3	141.6	139.7
Truck and bus bodies	127.8	130.9	133.0	134.1	138.1	146.0	150.9	154.8
Truck trailers	110.8	112.1	115.1	118.2	122.2	131.7	130.7	130.3
Aircraft	136.2	145.2	152.0	155.8	160.9	167.7	172.8	175.0
Toys, games, and children's vehicles	118.1	120.2	121.4	121.5	122.4	124.3	125.3	125.2
Sporting and athletic goods	112.6	115.3	118.2	118.6	120.1	122.0	123.3	124.7
Small arms and ammunition	145.3	151.2	152.7	157.0	159.8	162.8	165.5	167.3
Caskets	127.4	132.6	135.9	141.9	147.2	153.5	158.6	163.3
Musical instruments	121.7	126.6	130.3	135.9	141.8	149.1	154.8	159.4
Jewelry and jewelry product	119.3	121.5	122.0	123.5	124.6	125.8	127.6	128.1
Watches, clocks and timing mechanisms	113.7	116.8	117.5	118.1	119.2	121.5	121.3	118.2
Phono records, compact discs, & audio tapes	105.1	107.4	108.1	106.9	106.9	108.6	105.1	102.6
Fire extinguishers	107.6	111.4	115.8	122.6	130.7	134.7	137.3	138.0

NA Not available.

Source: U.S. Bureau of Labor Statistics, *Producer Price Indexes*, monthly and annual.

No. 779. Producer Price Indexes for the Net Output of Selected Industries: 1990 to 1997

[Indexes are based on selling prices reported by establishments of all sizes by probability sampling. Industries selected by value added. N.e.c.= not elsewhere classified. See text, Section 27]

INDUSTRY	SIC code ¹	Index base	1990	1994	1995	1996	1997
Bituminous coal and lignite	1211	12/81	100.5	97.0	95.3	95.0	95.9
Coal Mining Services	1241	06/85	107.0	104.9	105.7	109.2	108.1
Crude petroleum and natural gas	1311	06/84	76.4	62.4	59.0	76.8	79.1
Natural gas liquids	1321	06/84	77.4	59.4	66.6	87.8	88.3
Drilling oil and gas wells	1381	12/85	91.3	103.2	104.2	115.1	143.7
Construction sand and gravel	1442	06/82	126.9	142.8	146.6	151.1	155.3
Industrial sand	1446	06/82	119.3	130.4	134.2	136.6	138.9
Potash, soda, and borate minerals	1474	12/84	116.4	113.0	113.7	121.2	117.4
Sausage and other prepared meats	2013	12/82	112.7	108.9	108.5	115.5	118.8
Poultry slaughtering and processing	2015	12/81	118.9	121.1	120.5	127.1	124.7
Creamery butter	2021	06/84	77.7	62.6	64.7	81.7	84.5
Natural and processed cheese	2022	06/81	110.3	110.3	110.8	119.6	115.7
Ice cream and frozen desserts	2024	06/83	122.2	125.1	125.8	130.5	135.1
Fluid milk	2026	12/82	121.4	123.7	123.3	134.3	133.6
Cereal breakfast foods	2043	12/83	145.2	164.8	169.4	174.5	168.2
Rice milling	2044	06/84	94.0	109.3	104.6	117.5	118.9
Blended and prepared flour	2045	06/85	112.5	115.1	115.6	120.1	121.9
Wet corn milling	2046	06/85	114.7	128.8	124.5	133.6	123.6
Cookies and crackers	2052	06/83	141.9	154.5	156.5	161.4	167.0
Raw cane sugar mills	2061	06/82	115.7	111.7	115.9	115.0	112.9
Cane sugar refining	2062	06/82	124.4	123.3	124.5	127.9	127.1
Beet sugar processing	2063	06/82	120.7	110.0	111.4	117.8	118.4
Candy and other confectionery products, and chewing gum	2064	06/83	122.9	135.7	137.8	143.8	146.2
Chocolate and cocoa products	2066	06/83	109.2	119.6	123.8	127.7	131.5
Processed nuts and seeds (salted/roasted/cooked/blanched/etc.)	2068	06/91	(NA)	106.3	111.8	114.3	114.8
Cottonseed oil mill products	2074	06/85	112.3	119.7	117.5	130.6	122.1
Soybean oil mill products	2075	12/79	84.4	91.9	87.7	98.6	103.2
Vegetable oil mills, n.e.c.	2076	12/85	139.2	121.2	117.5	123.3	125.6
Animal and marine fats and oils	2077	12/82	112.7	112.7	118.1	138.1	145.9
Shortening, cooking oils, and margarine	2079	12/81	124.2	140.8	144.2	140.0	137.7
Malt beverages	2082	06/82	115.2	119.9	124.0	127.7	128.0
Malt	2083	06/85	113.4	103.8	116.0	135.0	122.6
Wines, brandy and brandy spirits	2084	12/83	113.1	119.8	120.6	126.3	135.8
Distilled spirits, except brandy	2085	06/83	121.4	140.4	145.0	149.1	152.0
Canned and cured seafoods	2091	12/84	122.8	116.7	120.4	113.7	113.6
Fresh or frozen packaged fish	2092	12/82	129.4	140.8	149.4	140.0	145.2
Coffee	2095	06/81	120.0	134.7	152.6	138.7	161.8
Potato and corn chips, and similar snacks	2096	06/91	(NA)	104.4	104.3	106.5	109.4
Macaroni, spaghetti, and noodles	2098	06/85	113.1	123.3	125.0	127.4	125.5
Cigarettes	2111	12/82	197.6	198.9	204.3	210.5	223.3
Cigars	2121	12/82	141.4	172.9	186.5	201.8	228.5
Chewing and smoking tobacco and snuff	2131	12/82	166.2	229.5	243.6	253.8	265.3
Cotton broadwoven fabric	2211	12/80	109.3	113.5	118.6	119.1	118.5
Manmade fiber and silk broadwoven fabric	2221	06/81	115.6	109.9	112.4	113.0	115.0
Carpet and rugs	2273	06/90	(NA)	100.7	102.2	104.4	105.9
Hardwood dimension and flooring	2426	06/84	117.2	145.4	146.5	144.1	153.6
Millwork	2431	06/83	120.4	152.8	152.1	153.6	156.4
Wood kitchen cabinets	2434	06/84	120.4	139.1	144.3	147.3	150.4
Hardwood veneer and plywood	2435	06/85	113.1	133.5	137.3	137.8	139.8
Softwood plywood	2436	12/80	102.5	152.9	158.0	139.5	142.4
Mobile homes	2451	06/81	122.5	142.1	151.0	155.3	157.8
Prefabricated wood buildings and components	2452	12/84	114.3	148.0	155.0	158.1	163.8
Wood preserving	2491	06/85	110.9	142.1	146.2	153.3	162.9
Reconstituted wood products	2493	06/91	(NA)	125.2	125.9	119.2	112.8
Upholstered wood household furniture	2512	06/82	121.5	129.7	132.9	136.3	138.1
Metal household furniture	2514	06/84	114.4	121.8	125.3	128.4	130.3
Mattresses and bedsprings	2515	06/83	121.2	131.9	133.6	134.7	135.9
Wood television, radio, phonograph and sewing machine cabinets	2517	12/85	104.6	108.6	108.8	110.1	114.1
Sanitary Paper Products	2676	06/83	130.0	142.5	149.5	150.3	147.8
Envelopes	2677	12/84	114.4	108.5	125.9	124.6	124.0
Stationery products	2678	06/85	122.0	119.5	156.5	143.1	136.5
Newspaper publishing	2711	12/79	220.4	269.5	286.7	306.9	317.7
Periodical publishing	2721	12/79	205.7	239.1	246.3	253.2	263.2
Book Publishing	2731	12/80	175.2	202.8	214.3	224.7	232.1
Book printing	2732	12/83	125.0	140.7	147.6	147.7	145.8
Typesetting	2791	06/85	109.9	116.6	117.8	118.8	119.5
Platemaking services	2796	12/85	107.4	110.7	111.6	112.7	112.8
Toilet preparations	2844	03/80	153.2	166.5	167.1	168.5	168.9
Paints and Allied Products	2851	06/83	125.0	136.0	143.1	147.4	152.1
Petroleum Refining	2911	06/85	90.1	72.2	74.5	85.3	83.1
Men's footwear	3143	12/80	142.0	154.6	160.4	162.7	166.2
Women's footwear	3144	12/80	117.1	127.0	128.6	131.6	131.9
Flat glass	3211	12/80	109.2	113.0	116.6	108.9	104.0
Glass containers	3221	06/82	118.6	125.4	128.3	126.9	123.6
Hydraulic cement	3241	06/82	102.7	118.7	127.2	132.9	138.1
Ceramic wall and floor tile	3253	06/85	112.3	114.7	116.5	116.3	116.0

See footnotes at end of table.

No. 779. Producer Price Indexes for the Net Output of Selected Industries: 1990 to 1997—Continued

[Indexes are based on selling prices reported by establishments of all sizes by probability sampling. Industries selected by value added. N.e.c.= not elsewhere classified. See text, Section 27]

INDUSTRY	SIC code ¹	Index base	1990	1994	1995	1996	1997
Clay refractories	3255	12/85	111.6	118.9	121.2	125.2	127.7
Lime	3274	12/85	107.8	110.4	112.3	115.8	117.7
Gypsum products	3275	06/81	102.3	128.0	145.1	144.5	159.1
Cut stone and stone products	3281	12/84	122.7	131.7	134.0	135.8	138.4
Abrasive products	3291	12/80	141.3	159.5	162.2	165.1	166.5
Primary copper	3331	06/80	152.4	145.9	194.4	144.8	137.3
Primary aluminum	3334	06/80	122.3	108.9	144.6	121.8	128.1
Metal cans	3411	06/81	116.6	110.8	118.7	112.0	110.4
Cutlery	3421	12/83	122.1	141.1	145.0	146.8	149.9
Metal sanitary ware	3431	12/80	138.1	150.2	157.0	162.8	163.7
Iron and steel forgings	3462	12/83	107.3	108.8	112.8	114.6	116.1
Construction machinery	3531	12/80	137.6	153.8	157.2	161.6	164.4
Mining machinery and equipment	3532	06/81	128.1	138.8	143.5	147.6	149.3
Electronic computers	3571	12/90	(NA)	60.1	53.8	45.2	36.5
Computer storage devices	3572	12/92	(NA)	76.8	67.2	57.6	51.1
Computer Terminals	3575	12/93	(NA)	99.9	98.1	98.6	99.2
Calculating and accounting machines	3578	06/85	92.6	90.9	90.3	86.8	88.3
Office machines, not elsewhere classified	3579	06/85	109.4	112.5	115.6	116.1	117.2
Automatic merchandising machines	3581	06/82	116.1	118.2	118.6	123.0	123.9
Commercial laundry equipment	3582	12/82	134.0	149.2	156.6	162.6	165.4
Household cooking equipment and parts	3631	06/81	110.7	114.1	114.2	114.3	113.2
Household refrigerators and freezers	3632	12/81	112.8	115.6	115.5	116.4	112.6
Household laundry equipment	3633	12/79	137.6	135.7	135.5	136.8	132.6
Electric housewares and fans	3634	12/82	109.7	114.2	112.8	112.4	109.8
Household vacuum cleaners	3635	12/82	114.7	123.6	124.0	124.6	112.6
Phonograph records and prerecorded audio tapes and disks	3652	12/84	101.4	100.5	102.0	99.2	97.7
Telephone & telegraph apparatus	3661	12/85	112.0	116.9	118.2	119.7	119.4
Electron tubes, all types	3671	12/85	109.4	114.6	117.2	117.3	116.8
Printed circuit boards	3672	06/91	(NA)	95.0	95.1	95.9	95.0
Semiconductors and related devices	3674	06/81	105.0	97.1	91.3	84.8	76.7
Electronic capacitors	3675	06/81	101.0	100.5	101.9	104.6	103.6
Electronic resistors	3676	12/80	134.1	163.8	166.2	175.6	176.9
Electronic coils, transformers, and other inductors	3677	06/82	124.5	132.0	133.6	135.9	137.5
Connectors for electronic applications	3678	12/80	134.5	150.1	151.1	154.3	155.4
Storage batteries	3691	12/84	114.6	107.6	111.8	115.4	115.2
Motor vehicles and passenger car bodies	3711	06/82	119.9	138.0	139.1	140.4	138.7
Truck and bus bodies	3713	12/82	125.4	136.8	145.5	149.9	153.5
Motor vehicle parts and accessories	3714	12/82	108.9	112.0	113.5	114.0	113.1
Truck trailers	3715	12/79	125.6	138.6	148.6	147.8	147.7
Motor homes built on purchased chassis	3716	06/84	125.8	134.5	137.8	141.6	143.1
Aircraft	3721	12/85	116.0	132.9	137.3	140.5	142.3
Aircraft engines and engine parts	3724	12/85	112.6	129.0	130.9	133.4	134.8
Ship building and repairing	3731	12/85	114.0	126.8	127.6	130.1	133.3
Boat building and repairing	3732	12/81	136.0	150.2	154.6	159.6	165.0
Railroad equipment	3743	06/84	114.2	122.6	127.6	129.6	127.4

NA Not available. ¹ Standard Industrial Classification code.

Source: U.S. Bureau of Labor Statistics, *Producer Price Indexes*, monthly.

No. 780. Chain-Type Price Indexes For Personal Consumption Expenditures (PCE): 1980 to 1997

[1992=100. For explanation of "chain-type," see text, Section 14]

ITEM	1980	1985	1990	1991	1993	1994	1995	1996	1997
Personal consumption expenditures	58.5	75.8	92.9	96.8	102.7	105.2	107.9	110.5	112.7
Durable goods	75.6	87.8	96.6	98.5	101.2	103.3	103.7	102.8	100.7
Motor vehicles and parts	68.3	83.2	93.8	97.1	103.3	107.2	111.0	113.0	113.0
Furniture and household equipment	92.0	100.9	101.5	100.9	98.6	98.6	96.7	93.7	90.3
Nondurable goods	65.3	78.7	94.6	98.1	101.5	102.8	104.5	107.2	109.2
Food	63.6	77.5	95.1	98.5	101.7	103.9	106.5	109.6	112.6
Clothing and shoes	72.5	81.6	94.5	97.9	101.0	100.3	98.9	98.8	99.8
Gasoline and oil	97.8	99.4	101.8	100.5	99.1	99.6	101.2	107.4	107.5
Fuel oil and coal	93.7	104.6	107.8	104.0	99.6	98.0	97.2	108.9	108.8
Services	51.0	71.6	91.2	95.8	103.6	106.9	110.5	113.8	117.0
Housing	52.4	73.9	93.5	97.1	102.8	105.7	109.0	112.4	115.8
Household operation	60.3	87.7	94.2	97.6	102.8	104.9	106.3	109.1	111.3
Electricity and gas	62.1	92.4	95.2	98.1	103.1	103.7	103.9	106.4	108.7
Other household operation	59.1	83.8	93.5	97.3	102.6	105.7	108.0	111.0	113.1
Transportation	56.0	71.1	89.9	95.4	104.3	106.3	109.7	112.2	116.6
Medical care	43.6	65.6	89.2	94.4	106.2	110.5	114.5	117.4	120.1
Other	51.8	69.3	90.2	95.3	102.2	105.4	110.1	113.7	117.5
Addenda:									
Price indexes for PCE:									
Food	63.6	77.5	95.1	98.5	101.7	103.9	106.5	109.6	112.6
Energy	80.8	96.5	98.9	99.5	101.0	101.5	102.3	107.0	108.1
PCE less food and energy	55.7	74.0	92.1	96.3	103.0	105.7	108.5	110.9	113.1

Source: U.S. Bureau of Economic Analysis, *The National Income and Product Accounts of the United States, 1929-94*, Vol. 2 and *Survey of Current Business*, August 1997 and May 1998.

No. 781. Chain-Type Price Indexes for Gross Domestic Product: 1990 to 1997

[1992=100. For explanation of "chain-type", see text, Section 14]

ITEM	1990	1991	1993	1994	1995	1996	1997
Gross domestic product	93.6	97.3	102.6	105.1	107.8	110.2	112.5
Personal consumption expenditures	92.9	96.8	102.7	105.2	107.9	110.5	112.7
Durable goods	96.6	98.5	101.2	103.3	104.3	103.8	102.2
Nondurable goods	94.6	98.1	101.5	102.8	104.5	107.2	109.2
Services	91.2	95.8	103.6	106.9	110.5	113.8	117.0
Gross private domestic investment	98.4	99.7	101.5	103.3	104.7	104.5	104.1
Fixed investment	98.2	99.6	101.5	103.4	104.8	104.7	104.5
Nonresidential	98.4	99.9	100.7	101.9	102.3	101.3	99.9
Structures	98.8	100.1	103.3	107.0	111.5	114.1	117.9
Producers' durable equipment	98.2	99.8	99.6	99.9	98.9	96.6	93.6
Residential	97.8	98.9	103.7	107.1	110.9	113.6	117.1
Exports of goods and services	98.7	100.3	100.1	101.2	103.4	101.6	99.4
Exports of goods	101.8	101.7	99.1	100.0	101.7	98.3	94.6
Exports of services	91.7	97.0	102.3	104.3	107.6	110.2	112.0
Imports of goods and services	100.4	100.0	98.8	99.4	101.6	99.4	95.5
Imports of goods	102.2	100.7	98.5	98.9	101.1	98.3	93.9
Imports of services	93.2	97.0	100.0	101.6	104.0	105.1	104.1
Government consumption expend ¹	94.1	97.5	102.5	104.9	108.3	111.8	114.5
Federal	92.9	96.9	102.5	104.8	108.3	112.0	114.7
National defense	92.9	96.5	101.8	103.6	106.8	111.0	113.6
Nondefense	92.8	98.0	104.3	107.7	111.9	114.5	117.4
State and local	94.9	97.9	102.5	104.9	108.2	111.7	114.3

¹ And gross investment.Source: U.S. Bureau of Economic Analysis, *The National Income and Product Accounts of the United States, 1929-94*, Vol. 2; and *Survey of Current Business*, August 1997 and May 1998.**No. 782. Chain-Type Price Indexes—Annual Percent Change: 1990 to 1997**

[1992=100. For explanation of "chain-type", see text, Section 14]

ITEM	1990	1991	1992	1993	1994	1995	1996	1997
Gross domestic product	4.4	3.9	2.8	2.6	2.4	2.5	2.3	2.0
Personal consumption expenditures	5.1	4.2	3.3	2.7	2.4	2.6	2.4	2.0
Durable goods	1.4	2.0	1.5	1.2	2.0	1.0	-0.4	-1.6
Nondurable goods	6.0	3.6	2.0	1.5	1.3	1.7	2.6	1.9
Services	5.4	5.0	4.4	3.6	3.1	3.5	2.9	2.9
Gross private domestic investment	2.4	1.4	0.3	1.5	1.8	1.4	-0.2	-0.4
Fixed investment	2.5	1.4	0.4	1.5	1.8	1.3	-0.1	-0.2
Nonresidential	2.4	1.5	0.1	0.7	1.2	0.4	-1.0	-1.4
Structures	3.3	1.3	-0.1	3.3	3.6	4.2	2.3	3.3
Producers' durable equipment	1.8	1.6	0.2	-0.4	0.3	-1.0	-2.3	-3.1
Residential	2.9	1.1	1.2	3.7	3.3	3.6	2.4	3.0
Exports of goods and services	0.8	1.6	-0.3	0.1	1.2	2.2	-1.8	-2.2
Exports of goods	-1.0	-0.1	-1.7	-0.9	0.8	1.8	-3.4	-3.7
Exports of services	5.8	5.8	3.1	2.3	2.0	3.2	2.4	1.7
Imports of goods and services	2.6	-0.3	0.0	-1.2	0.6	2.2	-2.2	-3.9
Imports of goods	1.8	-1.4	-0.7	-1.5	0.5	2.2	-2.8	-4.5
Imports of services	6.5	4.1	3.1	0.0	1.6	2.4	1.1	-1.0
Gov't consumption expends and gross	4.3	3.6	2.6	2.5	2.3	3.3	3.3	2.4
Federal	3.5	4.3	3.2	2.5	2.3	3.3	3.4	2.4
National defense	3.5	3.8	3.7	1.8	1.8	3.1	3.9	2.4
Nondefense	3.5	5.5	2.1	4.3	3.3	3.9	2.3	2.5
State and local	4.9	3.1	2.2	2.5	2.3	3.2	3.2	2.3

Source: U.S. Bureau of Economic Analysis, *National Income and Product Accounts of the United States, 1929-94*, vol. 2; and *Survey of Current Business*, August 1997 and May 1998.**No. 783. Commodity Research Bureau Futures Price Index: 1980 to 1997**

[1967=100. Index computed daily. Represents unweighted geometric average of commodity futures prices (through 6 months forward) of 17 major commodity futures markets. Represents end of year index]

ITEM	1980	1985	1987	1988	1989	1990	1991	1992	1993	1994	1995	1996	1997
All commodities	308.5	229.2	232.5	251.8	229.9	222.6	208.0	205.9	212.4	229.7	237.1	247.9	229.1
Imported	426.0	398.2	356.1	365.2	271.7	276.0	264.4	232.4	246.9	352.3	354.4	322.2	408.7
Industrial	324.6	211.7	252.5	248.2	249.6	245.5	217.2	224.7	235.0	263.6	272.5	266.3	210.9
Grains	312.1	198.5	186.1	261.9	205.7	171.2	196.1	196.9	193.8	191.2	218.6	284.7	210.7
Oilseeds	314.6	245.4	223.6	309.6	254.2	223.6	195.4	218.8	239.8	259.9	277.5	307.9	(NA)
Livestock and meats	217.4	206.9	189.9	199.1	206.5	226.2	174.0	179.8	201.4	192.3	192.4	241.7	238.1
Metals (precious)	531.4	256.6	346.4	318.7	296.9	257.8	226.0	228.5	242.2	273.9	276.0	271.3	249.3

NA Not available.

Source: Bridge Commodity Research Bureau (CRB), Chicago, IL, *CRB Commodity Index Report*, weekly. (Copyright.)

No. 784. Indexes of Spot Primary Market Prices: 1980 to 1997

[1967=100. Computed weekly for 1980; daily thereafter. Represents unweighted geometric average of price quotations of 23 commodities; much more sensitive to changes in market conditions than is a monthly producer price index]

ITEMS AND NUMBER OF COMMODITIES	1980 (6-24)	1985 (5-21)	1988 (5-27)	1989 (5-26)	1990 (5-25)	1991 (5-28)	1992 (5-26)	1993 (5-23)	1994 (5-24)	1995 (5-23)	1996 (5-21)	1997 (5-26)
All commodities (23)	265.1	251.4	270.3	281.3	279.2	235.3	242.3	237.7	261.5	290.6	297.7	271.8
Foodstuffs (10)	260.9	248.1	230.1	222.5	231.5	197.7	201.3	208.3	215.5	229.1	251.3	227.3
Raw industrials (13)	268.0	253.6	302.0	329.0	317.0	265.2	275.5	260.4	299.2	348.2	334.9	307.5
Livestock and products (5)	250.5	284.5	316.1	285.2	306.9	286.6	276.4	291.3	296.9	314.6	338.4	306.1
Metals (5)	257.9	220.2	276.7	347.1	313.9	348.8	262.7	236.2	262.1	306.7	296.7	269.8
Textiles and fibers (4)	234.7	220.8	247.3	253.5	259.4	201.8	218.6	205.3	252.6	286.0	274.6	261.5
Fats and oils (4)	229.5	273.1	230.4	208.1	193.3	185.0	180.7	190.1	209.6	228.3	245.7	257.1

Source: Bridge Commodity Research Bureau, Chicago, IL, *CRB Commodity Index Report*, weekly (copyright).

No. 785. Average Prices of Selected Fuels and Electricity: 1980 to 1997

[In dollars per unit, except electricity, in cents per kWh. Represents price to end-users, except as noted]

ITEM	Unit ¹	1980	1985	1990	1991	1992	1993	1994	1995	1996	1997
Crude oil, composite ²	Barrel	28.07	26.75	22.22	19.06	18.43	16.41	15.59	17.23	20.71	19.08
Motor gasoline: ³											
Unleaded regular	Gallon	1.25	1.20	1.16	1.14	1.13	1.11	1.11	1.15	1.23	1.23
Unleaded premium	Gallon	(NA)	1.34	1.35	1.32	1.32	1.30	1.31	1.34	1.41	1.42
No. 2 heating oil	Gallon	0.79	0.85	0.73	0.67	0.63	0.60	0.57	0.56	0.67	0.64
No. 2 diesel fuel	Gallon	0.82	0.79	0.73	0.65	0.62	0.60	0.55	0.56	0.68	0.64
Residual fuel oil	Gallon	0.61	0.61	0.44	0.34	0.34	0.34	0.35	0.39	0.46	0.42
Natural gas, residential	1,000 cu/ft.	3.68	6.12	5.80	5.82	5.89	6.16	6.41	6.06	6.34	6.93
Electricity, residential	kWh	5.4	7.4	7.8	8.0	8.2	8.3	8.4	8.4	8.4	8.5

NA Not available. ¹ See headnote. ² Refiner acquisition cost. ³ Average, all service.

Source: U.S. Energy Information Administration, *Monthly Energy Review*.

No. 786. Weekly Food Cost: 1990 and 1997

[In dollars. Assumes that food for all meals and snacks is purchased at the store and prepared at home. See source for details on estimation procedures]

FAMILY TYPE	DECEMBER 1990				NOVEMBER 1997			
	Thrifty plan	Low-cost plan	Moderate-cost plan	Liberal plan	Thrifty plan	Low-cost plan	Moderate-cost plan	Liberal plan
FAMILIES								
Family of two:								
20-50 years	48.10	60.60	74.70	92.70	57.20	72.30	89.30	111.10
51 years and over	45.60	58.30	71.80	85.80	53.70	69.50	86.00	103.10
Family of four:								
Couple, 20-50 years and children—								
1-2 and 3-5 years	70.10	87.30	106.60	131.00	83.00	104.00	127.30	156.70
6-8 and 9-11 years	80.10	102.60	128.30	154.40	95.50	122.50	152.90	184.30
INDIVIDUALS ¹								
Child:								
1-2 years	12.70	15.40	18.00	21.80	14.90	18.30	21.40	26.00
3-5 years	13.70	16.80	20.70	24.90	16.10	20.00	24.70	29.70
6-8 years	16.60	22.20	27.90	32.50	19.90	26.60	33.10	38.60
9-11 years	19.80	25.30	32.50	37.60	23.60	30.20	38.60	44.70
Male:								
12-14 years	20.60	28.60	35.70	42.00	24.50	34.10	42.30	49.80
15-19 years	21.40	29.60	36.80	42.60	25.30	35.20	43.80	50.60
20-50 years	22.90	29.30	36.60	44.30	27.30	35.00	43.80	53.00
51 years and over	20.90	27.90	34.30	41.10	24.60	33.40	41.20	49.40
Female:								
12-19 years	20.80	24.80	30.10	36.30	24.40	29.40	35.70	43.10
20-50 years	20.80	25.80	31.30	40.00	24.70	30.70	37.40	48.00
51 years and over	20.60	25.10	31.00	36.90	24.20	29.80	37.00	44.30

¹ The costs given are for individuals in four-person families. For individuals in other size families, the following adjustments are suggested: one-person, add 20 percent; two-person, add 10 percent; three-person, add 5 percent; five- or six-person, subtract 5 percent; seven- (or more) person, subtract 10 percent.

Source: U.S. Dept. of Agriculture, Agricultural Research Service, unpublished data.

No. 787. Food—Retail Prices of Selected Items: 1990 to 1997

[In dollars per pound, except as indicated. As of December]

FOOD	1990	1992	1993	1994	1995	1996	1997
Cereals and bakery products:							
Flour, white, all purpose	0.24	0.23	0.22	0.23	0.24	0.30	0.28
Rice, white, lg. grain, raw	0.49	0.53	0.50	0.53	0.55	0.55	0.58
Spaghetti and macaroni	0.85	0.86	0.84	0.87	0.88	0.84	0.88
Bread, white, pan	0.70	0.74	0.76	0.75	0.84	0.87	0.88
Meats, poultry, fish and eggs:							
Ground chuck, 100% beef	2.02	1.91	1.91	1.84	1.85	1.85	1.81
Rib roast, USDA Choice	4.54	4.69	4.73	4.88	4.81	5.09	5.21
Round steak, USDA Choice	3.42	3.34	3.32	3.24	3.20	3.22	3.09
Sirloin steak, bone-in	3.65	3.75	3.69	(NA)	(NA)	(NA)	(NA)
T-bone steak	5.45	5.39	5.77	5.86	5.92	5.87	6.07
Pork:							
Bacon, sliced	2.28	1.86	2.02	1.89	2.17	2.64	2.61
Chops, center cut, bone-in	3.32	3.15	3.24	3.03	3.29	3.44	3.39
Shoulder picnic, bone-in, smoked	1.41	1.18	1.19	1.13	1.17	1.31	1.29
Sausage	2.42	2.14	1.99	1.85	1.92	2.15	2.08
Poultry:							
Chicken, fresh, whole	0.86	0.88	0.91	0.90	0.94	1.00	1.00
Chicken breast, bone-in	2.00	2.08	2.17	1.91	1.95	2.09	1.99
Chicken legs, bone-in	1.17	1.14	1.13	1.12	1.20	1.26	1.22
Turkey, frozen, whole	0.96	0.93	0.95	0.98	0.99	1.02	0.98
Eggs, grade A, large, (dozen)	1.00	0.93	0.87	0.87	1.16	1.31	1.17
Dairy products:							
Milk, fresh, whole, fortified (1/2 gal.)	1.39	1.39	1.43	1.44	1.48	1.65	1.61
Butter, salted, grade AA, stick	1.92	1.64	1.61	1.54	1.73	2.17	2.46
Ice cream, prepack., bulk,reg.(1/2 gal.)	2.54	2.49	2.59	2.62	2.68	2.94	3.02
Fresh fruits and vegetables:							
Apples, red delicious	0.77	0.76	0.78	0.72	0.83	0.89	0.90
Bananas	0.43	0.40	0.41	0.46	0.45	0.48	0.46
Oranges, navel	0.56	0.52	0.56	0.55	0.64	0.59	0.58
Grapefruit	0.56	0.52	0.50	0.47	0.49	0.55	0.53
Lemons	0.97	0.90	1.05	1.04	1.12	1.14	1.06
Pears, anjou	0.79	0.80	0.89	(NA)	(NA)	1.06	0.85
Potatoes, white	0.32	0.31	0.36	0.34	0.38	0.33	0.37
Lettuce, iceberg	0.58	0.66	0.53	0.91	0.61	0.62	0.70
Tomatoes, field grown	0.86	1.23	1.31	1.43	1.51	1.21	1.62
Cabbage	0.39	0.38	0.37	0.45	0.41	0.40	0.46
Carrots, short trimmed and topped	0.44	0.44	0.41	0.48	0.53	0.54	0.50
Celery	0.49	0.48	0.49	0.52	0.54	0.44	0.57
Cucumbers	0.56	0.51	0.93	0.69	0.53	0.60	0.58
Processed fruits and vegetables:							
Orange juice, frozen concentrate, 12 oz. can, per 16 oz.	2.02	1.70	1.67	1.55	1.57	1.73	1.67
Potatoes, frozen, french fried	0.85	0.86	0.87	0.84	0.86	0.90	0.95

NA Not available.

Source: U.S. Bureau of Labor Statistics, *CPI Detailed Report, CPI Detailed Report*, January issues.

No. 788. Average Price of Energy in Selected Metropolitan Areas: 1997

[In dollars per unit shown. As of January. One therm contains approximately 100 cubic feet of natural gas. See Appendix II]

CITY/MSA	Utility (piped) gas (100 therms)	Electricity (500 kWh)	Fuel oil No. 2 (gallon)	GASOLINE		
				All types ¹	Unleaded regular	Unleaded premium
U.S. city average	70.47	48.13	0.98	1.24	1.18	1.36
Baltimore, MD MSA	71.65	47.76	1.11	1.24	1.18	1.33
Boston-Lawrence-Salem, MA-NH CMSA	96.81	63.09	0.99	1.27	1.23	1.39
Chicago-Gary-Lake County, IL-IN-WI CMSA	62.74	58.57	(NA)	1.27	1.21	1.40
Cleveland-Akron-Lorain, OH CMSA	62.66	59.97	(NA)	1.10	1.05	1.22
Dallas-Fort Worth, TX CMSA	59.71	45.47	(NA)	1.16	1.10	1.29
Detroit-Ann Arbor, MI CMSA	53.13	47.32	(NA)	1.13	1.09	1.29
Houston-Galveston-Brazoria, TX CMSA	56.50	40.75	(NA)	1.15	1.09	1.26
Los Angeles-Anaheim-Riverside, CA CMSA	84.89	63.95	(NA)	1.40	1.34	1.52
Miami-Fort Lauderdale, FL CMSA	111.85	43.59	(NA)	1.27	1.20	1.38
New York-N. NJ-Long Island, NY-NJ-CT CMSA	85.96	71.91	1.08	1.30	1.23	1.42
Philadelphia-Wilmington-Trenton, PA-NJ-DE-MD CMSA	83.53	62.83	0.90	1.27	1.14	1.33
Pittsburgh-Beaver Valley, PA CMSA	79.61	52.87	0.81	1.23	1.17	1.37
St. Louis-East St. Louis, MO-IL CMSA	65.86	37.07	(NA)	1.09	1.05	1.25
San Francisco-Oakland-San Jose, CA CMSA	74.82	61.08	(NA)	1.44	1.37	1.60
Washington-Baltimore, DC-MD-VA-WVA	86.29	40.62	1.16	1.26	1.20	1.36

NA Not available. ¹ Includes types of gasoline not shown separately.Source: U.S. Bureau of Labor Statistics, *CPI Detailed Report*, January issues.

No. 789. Import Price Indexes—Selected Commodities: 1990 to 1997

[1995=100. Indexes are weighted by the 1990 Tariff Schedule of the United States Annotated, a scheme for describing and reporting product composition and value of U.S. imports. Import prices are based on U.S. dollar prices paid by importer. F.o.b. = Free on board; c.i.f. = Cost, insurance, and freight; n.e.s.=Not elsewhere specified]

COMMODITY	1990 ¹	1991	1992	1993	1994	1995	1996	1997
All commodities	90.3	92.8	94.3	94.4	95.8	100.8	100.1	98.2
Food and live animals	84.9	88.1	84.3	87.0	93.9	100.1	94.7	103.7
Meat	116.3	122.8	110.4	115.6	105.9	99.1	90.4	101.9
Fish	77.9	86.7	86.9	86.9	97.6	101.6	97.5	103.6
Crustaceans; fresh, chilled, frozen, salted or dried	73.3	80.7	79.3	80.1	97.7	103.4	95.0	103.5
Beverages and tobacco	86.1	96.1	98.4	97.7	98.2	99.7	103.6	107.5
Beverages	86.4	96.0	97.9	98.2	98.1	99.9	101.4	104.0
Crude materials	82.4	77.5	77.5	77.1	86.3	99.8	94.3	97.4
Crude rubber	65.3	63.6	65.1	66.5	68.6	101.3	90.7	83.9
Cork and wood	72.5	76.2	82.7	92.2	113.2	92.7	113.6	122.5
Pulp and waste paper	91.5	70.4	66.2	56.7	62.4	103.2	62.1	65.8
Metalliferous ores and metal scrap	94.7	88.0	85.7	83.0	84.2	100.0	101.7	105.8
Mineral fuels and related products	92.9	105.8	110.1	101.6	96.9	105.1	110.6	104.6
Crude petroleum and petroleum products	91.7	105.5	110.4	100.8	96.4	105.4	111.0	104.0
Crude petroleum	88.4	107.7	116.2	101.4	97.4	104.5	111.2	103.7
Natural gas	112.7	111.1	105.5	113.8	105.4	101.2	108.2	113.3
Chemicals and related products	88.3	90.3	91.2	92.1	92.0	100.7	98.8	96.4
Organic chemicals	96.7	97.1	95.4	93.2	93.8	99.2	98.4	95.8
Intermediate manufactured products	88.8	88.6	88.8	88.6	90.2	99.8	99.2	96.8
Rubber manufactures	95.1	95.9	97.2	99.0	97.6	100.1	100.2	97.6
Cork and wood manufactures	83.9	82.4	90.3	100.8	105.7	99.7	101.3	99.0
Paper and paperboard products	79.9	80.4	75.0	77.0	76.1	99.6	100.9	87.5
Textiles	86.8	90.6	93.2	95.0	95.7	101.0	100.1	100.5
Nonmetallic mineral manufactures	89.5	92.7	94.7	96.8	97.4	99.9	101.5	102.6
Iron and steel	91.5	91.2	89.6	90.2	91.0	99.6	97.7	96.3
Nonferrous metals	93.7	84.5	84.2	72.8	81.0	98.6	93.8	95.1
Silver, platinum and other platinum group metals	125.4	120.8	101.2	92.6	100.2	104.5	96.2	103.8
Aluminum	84.1	73.1	73.6	67.4	76.4	99.5	90.2	93.1
Manufactures of metals, n.e.s.	89.7	91.8	93.5	94.8	94.9	100.5	100.4	99.0
Machinery and transport equipment	90.2	92.8	94.5	95.9	97.6	100.6	98.6	95.7
Machinery specialized for particular industries	84.1	87.9	91.0	92.9	94.7	101.1	101.1	99.3
Metalworking machinery	82.3	83.9	86.7	89.9	91.9	102.1	101.3	98.3
General industrial machinery, parts, n.e.s.	84.4	87.7	90.6	92.4	94.1	100.7	100.5	98.3
Computer equipment and office machines	119.2	116.1	114.2	109.7	104.0	100.4	91.7	81.2
Computer equipment	143.0	138.2	131.7	121.9	109.1	99.7	93.0	80.8
Telecommunications ²	102.0	99.6	99.0	99.9	99.2	100.5	97.3	93.4
Electrical machinery and equipment	92.0	93.7	95.2	96.9	98.9	101.6	95.5	90.2
Electronic valves, diodes, transistors & integr. cir.	93.3	94.6	94.5	99.1	102.7	102.9	89.3	78.3
Road vehicles	84.3	88.7	90.4	92.8	96.6	100.0	100.4	100.8
Miscellaneous manufactured articles	92.1	93.7	96.6	97.9	98.2	100.4	100.7	100.2
Plumbing, heating & lighting fixtures	95.3	94.9	98.2	98.8	96.4	100.4	99.5	96.2
Furniture and parts	93.7	95.7	97.7	98.4	98.2	100.7	100.8	102.9
Articles of apparel and clothing	97.6	95.9	98.8	99.2	99.2	100.1	101.5	102.6
Footwear	97.2	99.1	100.7	99.4	98.4	100.0	101.3	101.1
Prof., scientific & contrlng instr & apparatus, n.e.s.	83.5	87.5	89.4	94.7	96.8	100.5	99.3	97.1
Photographic apparatus ³	86.1	88.0	90.4	93.9	95.9	101.4	97.4	94.4
Miscellaneous manufactured articles, n.e.s.	88.8	92.3	96.1	98.1	98.3	100.3	100.9	99.4

¹ June 1990 may not equal 100 because indexes were reweighted to an "average" trade value in 1990. ² Includes sound recording and reproducing equipment. ³ Includes photographic supplies, optical goods, watches, and clocks.

Source: U.S. Bureau of Labor Statistics, *News, U.S. Import and Export Price Indexes*, monthly.

No. 790. Export Price Indexes—Selected Commodities: 1990 to 1997

[1995=100. Indexes are weighted by 1980 export values according to the Schedule B classification system of the U.S. Bureau of the Census. Prices used in these indexes were collected from a sample of U.S. manufacturers of exports and are factory transaction prices, except as noted. F.a.s. = free alongside ship. N.e.s. = not elsewhere specified. F.o.b. = free on board]

COMMODITY	1990 ¹	1991	1992	1993	1994	1995	1996	1997
All commodities	91.5	92.5	92.8	93.2	94.8	100.5	101.4	99.3
Food and live animals	89.0	86.0	87.8	83.5	88.7	97.4	122.0	98.5
Meat	84.9	87.9	91.5	96.2	92.5	99.9	101.6	95.3
Fish	83.6	80.4	83.3	82.0	83.3	103.2	89.4	85.3
Cereals and cereal preparations	90.6	80.7	87.4	75.7	84.9	95.4	145.6	92.3
Wheat	80.4	65.4	77.7	67.4	65.4	91.1	129.3	87.1
Maize	97.6	87.8	91.8	78.8	94.9	98	165.3	90.4
Fruits and vegetables	83.6	99.5	82.0	84.4	89.8	96.2	105.7	101.6
Feeding stuff for animals	93.2	95.5	97.6	96.2	101.4	98.3	122.5	127.2
Miscellaneous food products	100.4	100.9	100.6	100.8	98.3	101.3	103.2	103.5
Beverages and tobacco	86.4	92.0	95.5	98.4	98.7	99.9	100.6	100.8
Tobacco and tobacco manufactures	86.6	92.1	95.5	98.3	98.6	100.0	100.6	100.9
Crude materials	80.4	76.3	74.7	79.6	86.4	104.1	90.3	93.4
Raw hides and skins	105.1	81.5	80.8	79.1	94.3	103.4	95.7	100.8
Oil seeds and oleaginous fruits	97.0	99.2	98.3	97.8	112.7	96.6	127.0	134.6
Cork and wood	66.4	63.7	71.7	105.1	97.3	102.1	94.7	93.2
Pulp and waste paper	64.7	56.0	53.4	45.4	61.1	111.6	56.8	65.9
Textile fibers	81.8	85.3	68.6	66.6	83.7	106.9	91.1	83.4
Cotton textile fibers	83.4	86.7	64.1	62.2	81.4	107.9	90.2	80.6
Crude fertilizers and minerals	101.9	102.9	101.5	96.7	97.3	99.4	96.8	97.8
Metalliferous ores and metal scrap	83.4	74.4	71.1	70.1	76.2	104.2	89.3	91.7
Ferrous waste and scrap	85.2	79.7	70.2	84.5	81.6	99.6	93.3	93.5
Nonferrous base metal waste and scrap	85.3	72.3	73.8	62.0	79.6	100.2	86.8	89.2
Mineral fuels and related materials	100.1	98.7	95.0	96.6	96.0	102.0	109.1	110.9
Coal, coke and briquettes	103.2	101.7	99.8	96.8	96.8	100.3	103.1	102.0
Crude petroleum and petroleum products	99.9	95.3	92.0	96.0	95.7	103.6	113.7	119.4
Animal and vegetable oils, fats and waxes	86.6	78.9	79.7	82.7	92.5	96.5	95.4	94.7
Chemicals and related products	85.6	87.5	85.5	84.4	86.9	102.6	97.1	96.5
Organic chemicals	81.7	81.4	78.8	77.9	79.8	106.8	87.8	84.9
Hydrocarbons, n.e.s. and derivatives, f.a.s.	82.9	67.7	69.1	71.2	82.0	115.7	90.8	95.0
Alcohols, phenols, phenol-alcohols, & deriv., f.a.s.	77.4	81.9	74.9	75.0	71.8	105.9	88.0	81.5
Chemical materials and products, n.e.s.	85.9	90.0	89.5	91.9	94.6	100.0	102.0	103.9
Intermediate manufactured products	86.9	87.1	87.6	87.7	90.9	100.8	97.9	98.2
Rubber manufactures	84.9	90.1	90.6	93.1	93.7	99.8	102.8	103.2
Paper and paperboard products	81.1	81.1	80.2	76.5	78.4	103.3	87.3	83.5
Textiles	89.7	93.7	95.1	96.2	96.1	101.1	103.8	103.3
Nonmetallic mineral manufactures	91.1	92.5	94.6	96.4	98.1	100.1	101.2	104.3
Nonferrous metals	88.4	77.7	77.5	71.7	81.6	99.7	93.4	93.4
Manufactures of metals, n.e.s.	88.0	90.6	91.4	92.7	94.7	100.1	101.5	104.4
Machinery and transport equipment ²	95.3	98.3	99.7	99.8	99.4	100.0	100.9	100.6
Power generating machinery ³	86.5	90.7	94.9	95.9	97.7	99.4	104.3	106.0
Rotating electric plant and parts thereof, n.e.s.	89.2	91.2	93.7	95.0	96.2	100.4	102.4	103.1
Machinery specialized for particular industries	88.0	91.6	93.5	95.8	97.3	99.9	102.7	104.2
Agricultural machinery and parts ⁴	90.3	92.2	94.6	96.8	98.7	100.3	102.0	102.8
Civil engineering and contractors, plant and equip.	87.6	92.1	90.4	93.5	97.1	100.2	101.5	103.1
Metalworking machinery	89.0	95.1	97.4	99.1	98.8	100.0	102.3	104.3
General industrial machines, parts, n.e.s.	89.2	92.7	94.9	96.8	98.4	99.4	102.5	105.2
Computer equipment and office machines	132.0	129.4	124.5	115.3	106.5	100.8	93.7	84.7
Computer equipment	148.1	144.4	138.7	123.2	111.0	101.5	90.1	79.1
Telecommunications ⁵	94.1	100.0	101.8	102.9	100.9	100.3	101.1	99.6
Electrical machinery and equipment	96.8	97.4	100.3	100.2	99.9	100.7	99.1	96.5
Electronic valves, diodes, transistors & integr. cir.	101.6	99.5	104.7	103.3	101.0	101.7	97.9	91.8
Road vehicles	92.1	94.7	96.2	97.3	98.4	99.8	101.0	101.8
Miscellaneous manufactured articles	91.7	96.5	98.3	99.0	99.1	99.9	100.8	101.7

¹ June 1990 may not equal 100 because indexes were reweighted to an "average" trade value in 1990. ² Excludes military and commercial aircraft. ³ Includes equipment. ⁴ Excludes tractors. ⁵ Includes sound recording and reproducing equipment.

Source: U.S. Bureau of Labor Statistics, *News, U.S. Import and Export Price Indexes*, monthly.

No. 791. Refiner/Reseller Sales Price of Gasoline, by State: 1995 to 1997

[In cents per gallon. As of March. Represents all refinery and gas plant operators' sales through company-operated retail outlets. Gasoline prices exclude excise taxes]

STATE	Gasoline excise taxes 1997	AVERAGE, ALL GRADES			MIDGRADE			PREMIUM		
		1995	1996	1997	1995	1996	1997	1995	1996	1997
United States	(NA)	63.0	71.5	70.3	67.3	76.0	75.1	72.4	80.4	79.4
Alabama	18	61.3	69.5	67.5	64.2	72.7	70.3	69.1	77.3	75.7
Alaska	8	81.8	90.0	90.9	93.9	103.7	101.8	92.3	102.5	101.9
Arizona	18	70.2	80.3	78.4	73.2	85.6	85.2	81.0	91.1	90.0
Arkansas	19	58.7	67.7	66.2	61.9	70.7	68.8	66.0	75.4	73.5
California	19	68.1	78.0	79.0	71.4	81.1	84.2	79.2	87.7	90.3
Colorado	22	63.6	73.3	72.6	68.4	78.1	76.5	70.9	80.5	79.9
Connecticut	39	72.3	74.7	73.2	72.3	78.2	77.9	78.2	83.6	81.9
Delaware	23	67.4	73.5	71.6	69.6	76.1	74.7	76.0	81.7	80.5
District of Columbia	20	77.8	85.4	82.0	75.9	83.8	80.6	83.3	91.2	86.6
Florida	13	63.2	71.2	70.0	65.3	73.6	72.9	72.7	80.4	79.3
Georgia	8	60.5	68.2	66.2	62.9	70.8	69.0	68.3	76.0	74.0
Hawaii	16	96.7	103.7	101.9	98.8	106.7	106.1	104.9	112.7	111.6
Idaho	26	67.3	77.8	79.6	69.8	80.0	82.8	75.0	84.7	88.1
Illinois	20	63.0	73.8	70.9	71.6	82.8	78.4	74.2	84.0	81.6
Indiana	16	61.0	70.2	67.8	65.7	75.2	71.6	69.4	78.6	76.5
Iowa	20	59.5	70.2	68.8	66.8	75.9	72.5	66.3	76.8	75.2
Kansas	18	57.5	67.6	66.4	62.9	73.5	71.9	64.2	74.6	73.1
Kentucky	16	61.9	70.8	69.2	65.5	74.6	73.2	69.3	77.9	77.2
Louisiana	20	58.5	66.2	65.7	63.2	70.2	70.3	66.0	74.2	72.1
Maine	19	64.8	71.4	71.1	70.0	77.0	75.8	72.6	78.7	79.1
Maryland	24	69.2	77.0	73.7	71.2	79.1	76.2	77.2	85.0	81.0
Massachusetts	21	69.5	75.2	74.6	73.5	80.3	80.5	78.3	82.9	83.1
Michigan	16	61.2	71.8	68.4	65.2	76.0	72.5	69.3	79.9	76.8
Minnesota	20	62.6	72.6	71.6	68.0	78.7	74.3	69.5	79.7	78.2
Mississippi	18	58.1	66.4	65.5	61.8	70.1	69.8	66.1	74.2	73.6
Missouri	17	59.4	69.8	68.9	64.5	75.9	74.8	66.6	77.1	77.0
Montana	28	69.0	79.9	77.3	72.0	81.9	79.9	76.4	88.4	86.6
Nebraska	26	59.8	69.9	68.7	63.7	74.0	73.0	66.9	77.1	75.9
Nevada	24	66.9	78.6	78.1	70.3	82.6	81.8	77.1	88.0	87.3
New Hampshire	20	71.5	77.8	76.6	74.9	80.8	81.2	80.2	86.8	86.7
New Jersey	11	66.3	71.6	70.7	73.8	79.9	79.1	75.3	80.9	80.6
New Mexico	19	64.1	74.7	73.3	69.3	78.7	76.0	72.0	82.4	81.6
New York	22	67.8	74.3	74.4	72.3	79.5	79.4	78.4	84.5	83.7
North Carolina	23	60.2	68.5	67.3	62.6	70.9	70.1	68.0	76.2	75.2
North Dakota	20	62.2	72.5	70.4	68.3	77.7	75.8	71.6	81.6	79.1
Ohio	22	61.3	70.6	68.4	65.8	74.5	72.2	70.5	79.3	77.6
Oklahoma	17	56.0	65.5	64.4	63.2	72.8	70.7	63.7	72.9	71.4
Oregon	24	67.7	77.2	76.2	72.6	82.9	82.8	80.4	88.0	86.8
Pennsylvania	22	64.2	70.7	69.1	67.4	73.7	72.3	72.9	78.7	77.4
Rhode Island	29	66.0	73.3	72.6	70.0	76.7	77.4	75.4	81.7	81.6
South Carolina	17	60.5	68.5	66.7	62.6	71.3	69.4	68.7	76.8	74.8
South Dakota	20	62.2	72.6	70.9	67.5	77.0	73.3	70.3	80.4	79.0
Tennessee	21	60.3	68.9	67.4	62.7	71.3	70.5	67.8	76.5	75.2
Texas	20	57.8	65.3	63.8	63.9	71.4	69.9	66.2	73.7	72.3
Utah	19	67.6	77.3	79.3	70.2	79.9	82.0	73.9	83.3	85.8
Vermont	16	72.0	78.8	77.6	74.3	81.6	81.9	80.9	87.7	86.0
Virginia	18	63.8	71.6	69.4	66.1	73.9	72.0	72.2	80.0	77.3
Washington	23	69.9	79.8	77.2	75.0	84.6	82.4	82.0	90.7	88.4
West Virginia	21	65.3	73.6	71.3	68.1	76.4	74.3	73.8	81.9	79.8
Wisconsin	27	61.6	71.8	68.6	65.4	75.9	73.1	69.5	79.2	76.5
Wyoming	9	65.1	76.0	75.4	70.1	80.7	81.8	72.8	83.5	83.8

NA Not available.

Source: U.S. Energy Information Administration, *Petroleum Marketing Monthly*.