


Central Mojave Vegetation and Land Cover




Joshua Tree Wooded Shrubland

Alliance:
Yucca brevifolia Wooded Shrubland
Location shown:
Cima Dome 
Coverage:
274,280 hectares (5.5% of map area)




Pinyon Woodlands and Shrublands

Alliance:
Pinus monophylla Woodland
Location shown:
Clark Mountain 
Coverage:
104,846 hectares (0.2% of map area)




Big Sagebrush Shrubland

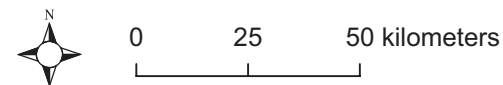
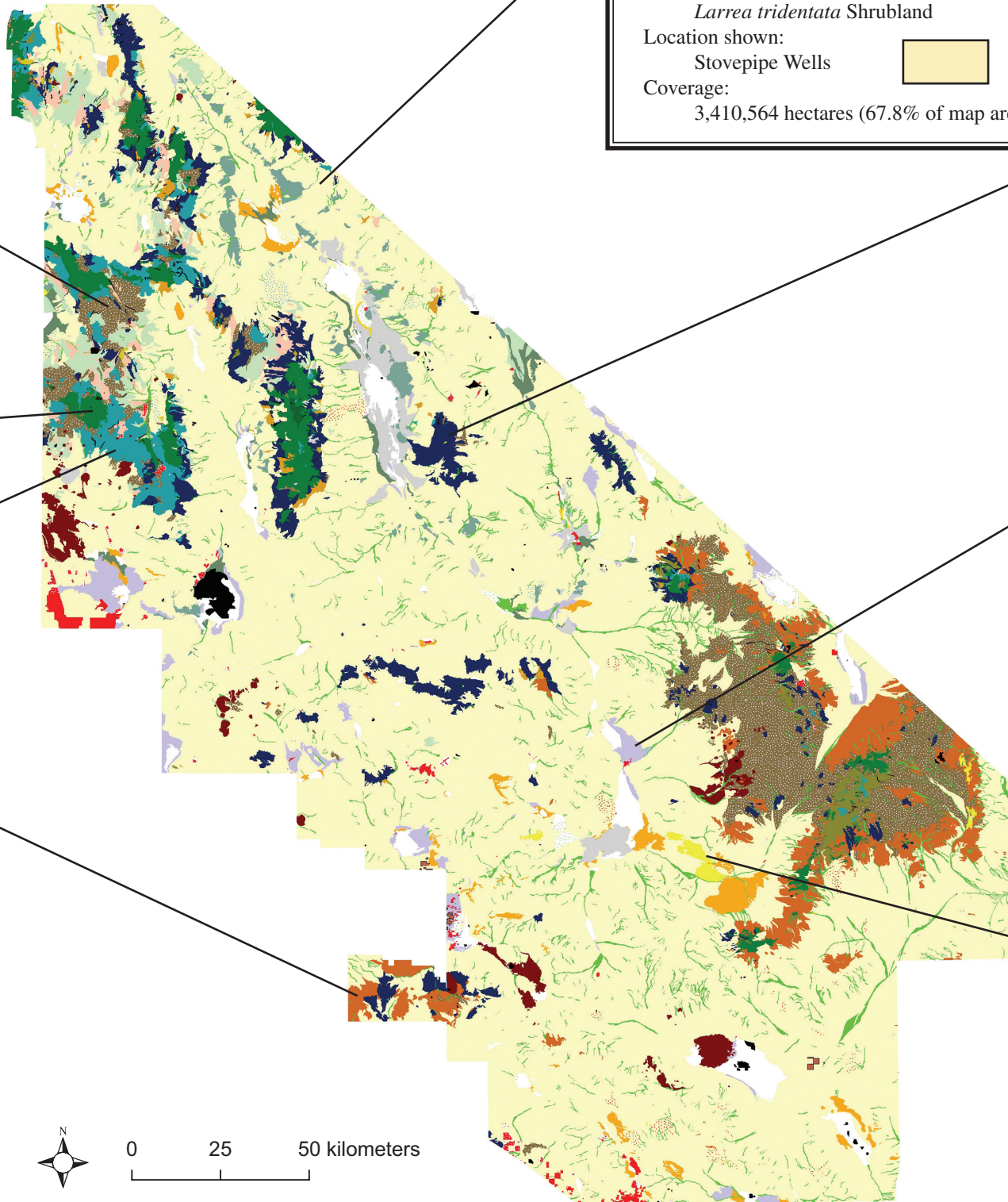
Alliance:
Artemisia tridentata Shrubland
Location shown:
Mid Hills 
Coverage:
81,872 hectares (1.6% of map area)




Mojave Yucca Shrubland

Alliance:
Yucca schidigera Shrubland
Location shown:
Southern Nopah Range 
Coverage:
156,638 hectares (3.1% of map area)

-  Agricultural Land Use
-  Big Sagebrush Shrubland
-  Blackbrush Shrubland
-  Creosote Bush Shrubland
-  Creosote Bush/Brittlebush Mosaic
-  Desert Holly Shrubland
-  Dunes
-  Galleta Grasslands
-  High Elevation Pine Woodlands
-  High Elevation Wash System
-  Hopsage Shrubland
-  Joshua Tree Wooded Shrubland
-  Juniper Wooded Shrubland
-  Lava Beds and Cinder Cones
-  Low Elevation Wash System
-  Menodora Shrubland
-  Mesquite Shrubland
-  Mid Elevation Wash System
-  Mining
-  Mojave Yucca Shrubland
-  Nevada Joint-Fir Shrubland
-  Iodine Bush-Seepweed Complex
-  Pinyon Woodlands and Shrublands
-  Playa
-  Rural Development
-  Saltbush Complex
-  Saltgrass
-  Shadscale Shrubland
-  Sparsely Vegetated
-  Urban
-  White Burrobush Shrubland




Creosote Bush Shrubland

Alliance:
Larrea tridentata Shrubland
Location shown:
Stovepipe Wells 
Coverage:
3,410,564 hectares (67.8% of map area)




Blackbrush Shrubland

Alliance:
Coleogyne ramosissima Shrubland
Location shown:
Homewood Canyon 
Coverage:
177,366 hectares (3.5% of map area)




Saltbush Complex

Alliance:
Atriplex canescens Shrubland
Location shown:
Stovepipe Wells 
Coverage:
67,055 hectares (1.3% of map area)



Galleta Grasslands

Alliance:
Pleuraphis rigida Herbaceous
Location shown:
East of Superior Lake 
Coverage:
10,215 hectares (0.2% of map area)