

CHAPTER SEVEN

CHARACTERISTICS INTRODUCTION AND REGULATORY DEFINITIONS

This chapter addresses procedures for required "method-defined parameters," where the analytical result is wholly dependant on the process used to make the measurement. Examples include the use of the toxicity characteristic leaching procedure (TCLP) to prepare a leachate, and the flash point, pH, paint filter liquids, and corrosivity tests. In these instances, changes to the specific methods may change the end result and incorrectly identify a waste as nonhazardous. Therefore, when the measurement of such method-defined parameters is required by regulation, those methods are not subject to the flexibility afforded in other SW-846 methods (such as described in the Disclaimer and Chapter Two of this manual).

7.1 IGNITABILITY

7.1.1 Introduction

The objective of the ignitability characteristic is to identify wastes that either present fire hazards under routine storage, disposal, and transportation or are capable of severely exacerbating a fire once started.

7.1.2 Regulatory Definition

See 40 CFR 261.21 for the regulatory definition of the hazardous waste characteristic of ignitability. Methods 1010 and 1020 of Chapter Eight refer the reader to the ASTM standards required by the RCRA regulations for the flash point of liquids at 40 CFR 261.21(1).

7.2 CORROSIVITY

7.2.1 Introduction

The corrosivity characteristic, as defined in 40 CFR 261.22, is designed to identify wastes that might pose a hazard to human health or the environment due to their ability to:

1. Mobilize toxic metals if discharged into a landfill environment;
2. Corrode handling, storage, transportation, and management equipment; or
3. Destroy human or animal tissue in the event of inadvertent contact.

In order to identify such potentially hazardous materials, EPA has selected two properties upon which to base the definition of a corrosive waste. These properties are pH and corrosivity toward Type SAE 1020 steel.

The procedures for measuring pH of aqueous wastes are detailed in Method 9040, Chapter Six. Method 1110, Chapter Eight, describes how to determine whether a waste is corrosive to steel. Use Method 9095, Paint Filter Liquids Test, Chapter Six, to determine free liquid.

7.2.2 Regulatory Definition

See 40 CFR 261.22 for the regulatory definition of the hazardous waste characteristic of corrosivity.

7.3 REACTIVITY

7.3.1 Introduction

The regulation in 40 CFR 261.23 defines reactive wastes to include wastes that have any of the following properties: (1) readily undergo violent chemical change; (2) react violently or form potentially explosive mixtures with water; (3) generate toxic fumes when mixed with water or, in the case of cyanide- or sulfide-bearing wastes, when exposed to mild acidic or basic conditions; (4) explode when subjected to a strong initiating force; (5) explode at normal temperatures and pressures; or (6) fit within the Department of Transportation's forbidden explosives, Class A explosives, or Class B explosives classifications.

This definition is intended to identify wastes that, because of their extreme instability and tendency to react violently or explode, pose a problem at all stages of the waste management process. The Agency relies entirely on a descriptive, prose definition of reactivity because available tests for measuring the variegated class of effects embraced by the reactivity definition suffer from a number of deficiencies.

7.3.2 Regulatory Definition

See 40 CFR 261.24 for the regulatory definition of the hazardous waste characteristic of reactivity.

7.4 TOXICITY CHARACTERISTIC LEACHING PROCEDURE

7.4.1 Introduction

The Toxicity Characteristic Leaching Procedure (TCLP) is designed to simulate the leaching a waste will undergo if disposed of in a sanitary landfill. This test is designed to simulate leaching that takes place in a sanitary landfill only. The extraction fluid employed is a function of the alkalinity of the solid phase of the waste. A subsample of a waste is extracted with the appropriate buffered acetic acid solution for 18 ± 2 hours. The extract obtained from the TCLP (the "TCLP extract") is then analyzed to determine if any of the thresholds established for the 40 Toxicity Characteristic (TC) constituents (listed in Table 7-1) have been exceeded or if the treatment standards established for the constituents listed in 40 CFR 268.40 have been met under the Land Disposal Restrictions (LDR) regulations. If the TCLP extract contains any one of the TC constituents in an amount equal to or exceeding the concentrations specified in 40 CFR 261.24, the waste possesses the characteristic of toxicity and is a hazardous waste. If the TCLP extract contains constituents in an amount exceeding the concentrations specified in 40 CFR 268.40, the treatment standard for that waste has not been met, and further treatment is necessary prior to land disposal.

7.4.2 Summary of Procedure

Figure 3 summarizes the procedures in the TCLP. The five basic steps of the TCLP are summarized below.

1. Separation Procedure

For liquid wastes (i.e., those containing less than 0.5% dry solid material), the waste, after filtration through a 0.6 to 0.8 μm glass fiber filter, is defined as the TCLP extract.

For wastes containing greater than or equal to 0.5% solids, the liquid, if any, is separated from the solid phase and stored for later analysis.

2. Particle Size Reduction

Prior to extraction, the solid material must pass through a 9.5-mm (0.375-in.) standard sieve, have a surface area per gram of material equal to or greater than 3.1 cm^2 , or, be smaller than 1 cm in its narrowest dimension. If the surface area is smaller or the particle size larger than described above, the solid portion of the waste is prepared for extraction by crushing, cutting, or grinding the waste to the surface area or particle size described above. (Special precautions must be taken if the solids are prepared for organic volatiles extraction.)

3. Extraction of Solid Material

The solid material from Step 2 is extracted for 18 ± 2 hours with an amount of extraction fluid equal to 20 times the weight of the solid phase. The extraction fluid employed is a function of the alkalinity of the solid phase of the waste. A special extractor vessel is used when testing for volatile analytes.

4. Final Separation of the Extraction from the Remaining Solid

Following extraction, the liquid extract is separated from the solid phase by filtration through a 0.6 to 0.8 μm glass fiber filter. If compatible, the initial liquid phase of the waste is added to the liquid extract, and these are analyzed together. If incompatible, the liquids are analyzed separately and the results are mathematically combined to yield a volume-weighted average concentration.

5. Testing (Analysis) of TCLP Extract

Inorganic and organic species are identified and quantified using appropriate methods in the 6000, 7000, and 8000 series of methods in this manual or by other appropriate methods.

7.4.3 Regulatory Definition

Under the Toxicity Characteristic, a solid waste exhibits the characteristic of toxicity if the TCLP extract from a subsample of the waste contains any of the contaminants listed in Table 7-1 at a concentration greater than or equal to the respective value given in that table. If a waste contains <0.5% filterable solids, the waste itself, after filtering, is considered to be the extract for the purposes of analysis.

Under the Land Disposal Restrictions regulations (40 CFR, Part 268), a restricted waste identified in 40 CFR 268.40 cannot be land disposed if a TCLP extract of the waste or a TCLP extract of the treatment residue of the waste exceeds the values shown in the table of 40 CFR 268.40 for any hazardous constituent listed in the table for that waste. If a waste contains

<0.5% filterable solids, the waste itself, after filtering, is considered to be the extract for the purposes of analysis.

TABLE 7-1.
MAXIMUM CONCENTRATION OF CONTAMINANTS FOR TOXICITY CHARACTERISTIC

Contaminant	Regulatory Level (mg/L)
Arsenic	5.0
Barium	100.0
Benzene	0.5
Cadmium	1.0
Carbon tetrachloride	0.5
Chlordane	0.03
Chlorobenzene	100.0
Chloroform	6.0
Chromium	5.0
o-Cresol	200.0 ¹
m-Cresol	200.0 ¹
p-Cresol	200.0 ¹
Cresol	200.0 ¹
2,4-D	10.0
1,4-Dichlorobenzene	7.5
1,2-Dichloroethane	0.5
1,1-Dichloroethylene	0.7
2,4-Dinitrotoluene	0.13 ²
Endrin	0.02
Heptachlor (and its hydroxide)	0.008
Hexachlorobenzene	0.13 ²
Hexachloro-1,3-butadiene	0.5
Hexachloroethane	3.0
Lead	5.0
Lindane	0.4
Mercury	0.2
Methoxychlor	10.0
Methyl ethyl ketone	200.0
Nitrobenzene	2.0
Pentachlorophenol	100.0
Pyridine	5.0 ²
Selenium	1.0
Silver	5.0
Tetrachloroethylene	0.7
Toxaphene	0.5
Trichloroethylene	0.5
2,4,5-Trichlorophenol	400.0
2,4,6-Trichlorophenol	2.0
2,4,5-TP (Silvex)	1.0
Vinyl chloride	0.2

¹If o-, m-, and p-cresol concentrations cannot be differentiated, the total cresol (D026) concentration is used. The regulatory level of total cresol is 200 mg/L.

²Quantitation limit is greater than the calculated regulatory level. The quantitation limit therefore becomes the regulatory level.

FIGURE 3.

TOXICITY CHARACTERISTIC LEACHING PROCEDURE FLOWCHART

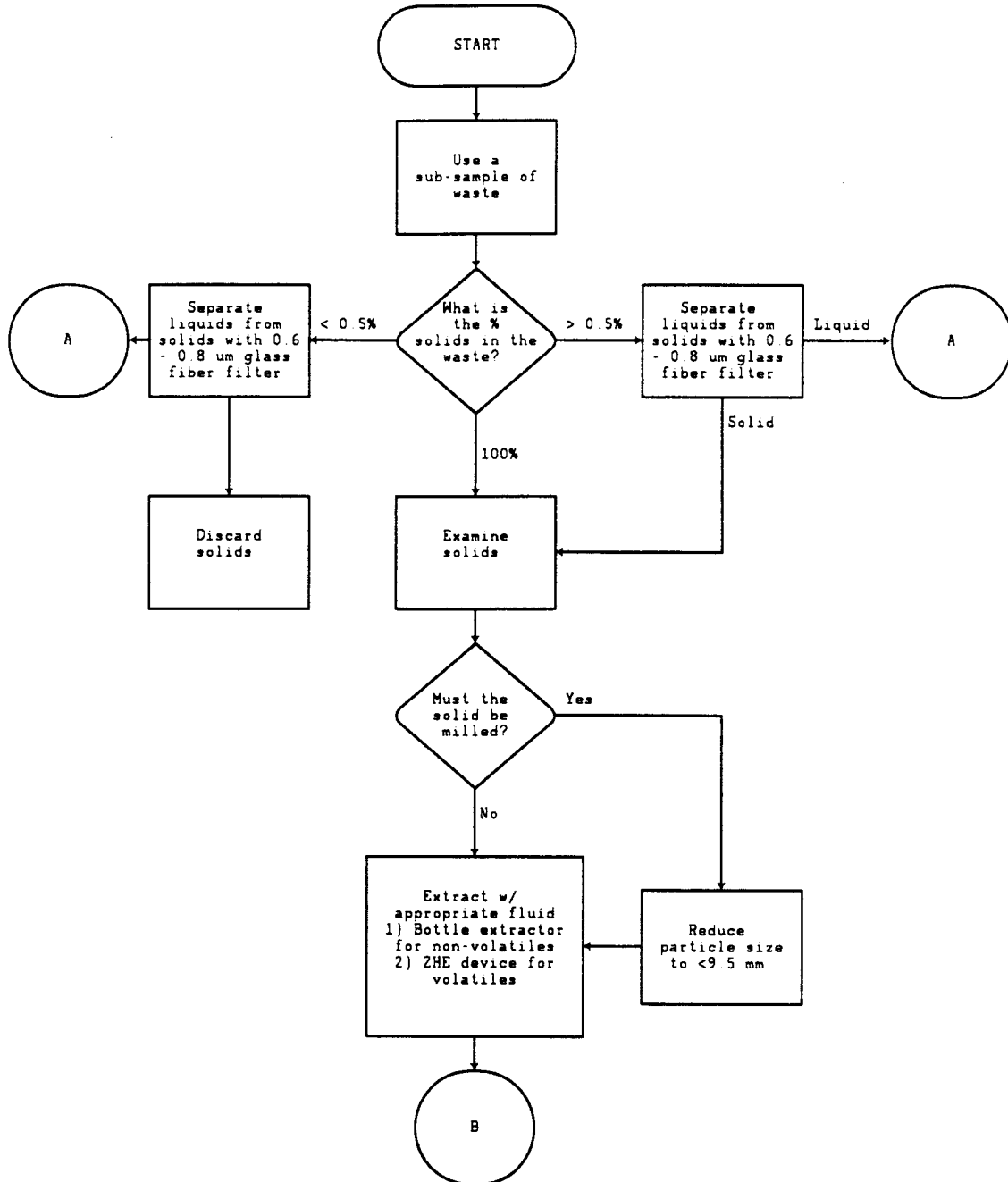


FIGURE 3 (continued)

