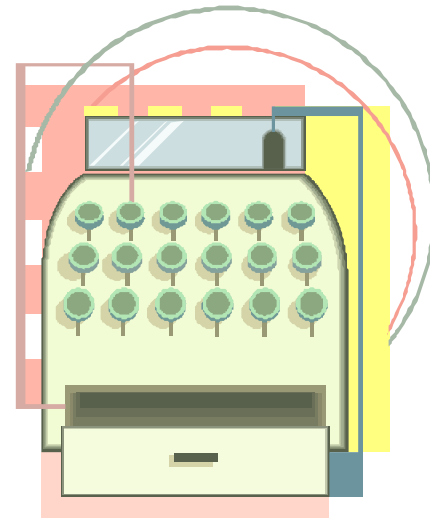


Retail Trade NAICS vs. SIC

	Sales (\$billions)
NAICS	2, 460.9
SIC	2, 546.2
Change	- 85.3
Percent Change	- 3.3

Source: 1997 Economic Census



Retail Trade NAICS vs. SIC Source of Change

Source of change	Sales (\$billions)
Retail and Wholesale Boundary Change (move from wholesale)	+ 172.4
Food Services (eating and drinking) (move to Accommodation and Food Services)	- 251.9
Other changes (manufacturing, etc.)	- 5.8
Net change	- 85.3

Source: 1997 Economic Census

Retail Trade NAICS vs. SIC

Sales Change by NAICS Industry Group

NAICS	SIC	Description	Percent Change	Explanation
44,45		Retail Trade	-3.3	Food Services (loss), wholesale
441	55 ex 554	Motor vehicles and parts	4.5	Tires and parts from wholesale
442	571	Furniture and Home Furnishings	9.3	Furniture and floor coverings from wholesale
443	572, 5731, 5734	Electronic and appliances	15.5	Computers from wholesale, telephone and camera stores
444	52	Building materials, garden equipment and supplies	55.7	Lumber, construction equipment, electrical supplies, plumbing supplies, lawn equipment and farm supplies from wholesale
445	54	Food and beverage	-3.4	Convenience stores with gasoline (loss), Retail bakeries (loss), liquor stores
446	591	Health & personal care	19.4	Vitamins, cosmetic supplies
447	554	Gasoline stations	16.1	Convenience stores with gasoline
448	56	Clothing	17.0	Jewelry, luggage, leather stores
451		Sporting goods, hobby, book & music	NC	
452	53	General merchandise stores	0.7	Supercenters, other auto and home
453		Miscellaneous store retailers	NC	
454	596	Nonstore retailers	42.5	Computers and office supplies from wholesale, heating and LP gas

Source: 1997 Economic Census

Retail Trade NAICS vs. SIC Largest Industries

NAICS	SIC	Description	Sales percent change	Explanation
44111	5511	New car dealers	0.0	
4451	5411	Grocery stores	- 7.3	Convenience stores w/ gas moved to gasoline stations
4521	5311	Department stores (excl leased depts.)	-15.3	Supercenters moved to Other general merchandise stores

Source: 1997 Economic Census