

News

United States
Department
of Labor



Bureau of Labor Statistics

New York Office

Internet Address: <http://www.bls.gov/ro2/home.htm>
Information: Martin Kohli, (646) 264-3620
Media Contact: Michael L. Dolfman, (212) 337-2500

For Release: Thursday, January 17, 2008

JOB COUNT FOR THE NEW YORK AREA RISES BY 80,000 OVER THE YEAR; UNEMPLOYMENT RATE AT 4.3 PERCENT IN NOVEMBER 2007

Overview

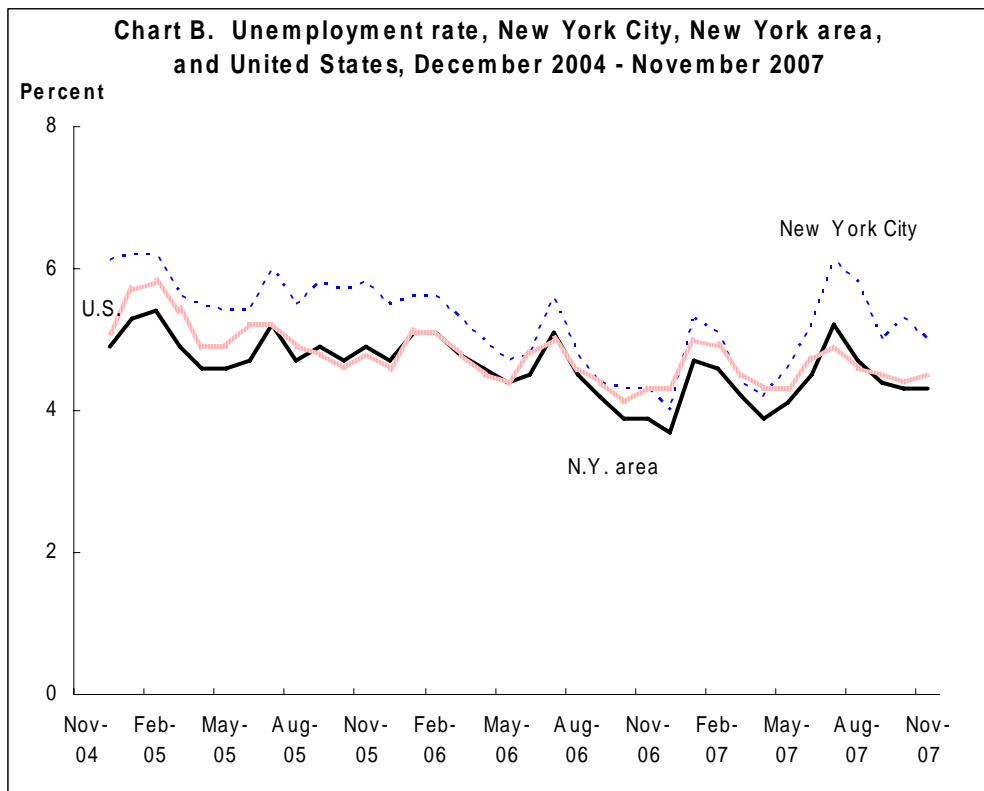
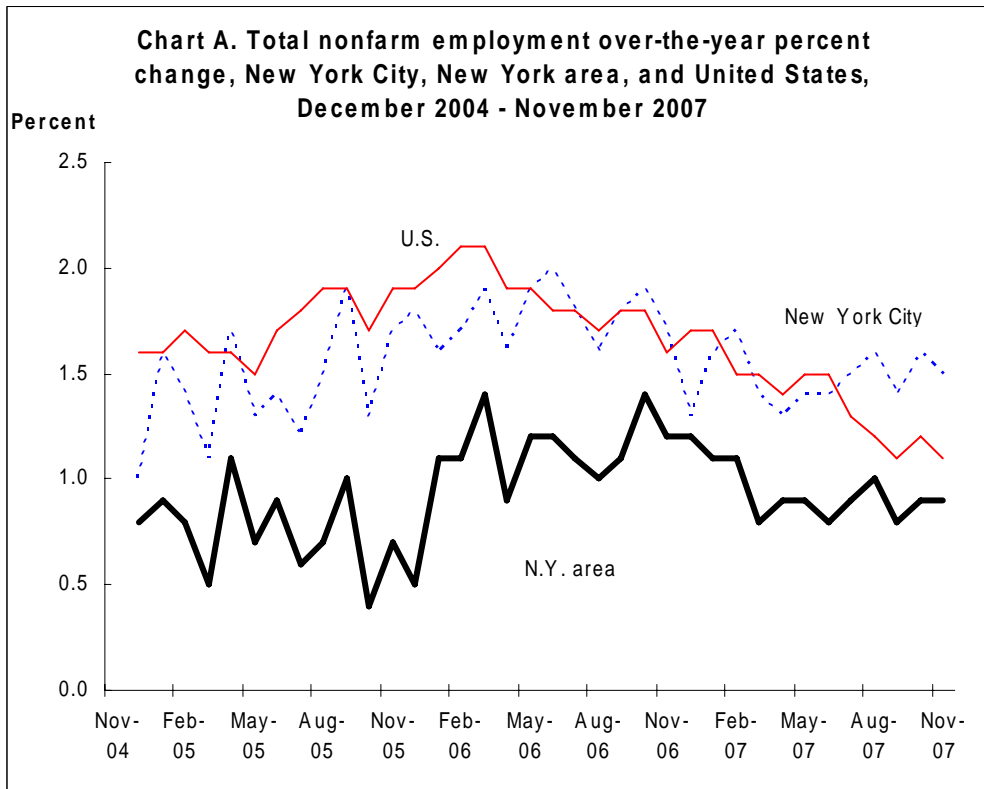
Total nonfarm employment for the New York-Northern New Jersey-Long Island Metropolitan Statistical Area rose by 80,000 or 0.9 percent from November 2006 to November 2007, the Bureau of Labor Statistics of the U.S. Department of Labor reported today.¹ Regional Commissioner Michael L. Dolfman pointed out that pace of job growth in the area has slowed since November 2006, when the 12-month increase was 97,900 or 1.2 percent. Similarly, at the national level, the rate of job growth was down from 1.6 percent in November 2006 to 1.1 percent in November 2007. The unemployment rate for the New York area stood at 4.3 percent in November 2007, compared to 3.9 percent in November 2006. The unemployment rate for the nation in November 2007 was 4.5 percent, 0.2 percentage point higher than one year earlier.

New York City accounted for much of the metropolitan area's employment growth in November 2007 with the addition of 54,500 jobs over the 12-month period, an increase of 1.5 percent. November was the fifth consecutive month in which the City's 12-month rate of job growth exceeded the national rate. (See chart A.) The last time such a streak occurred was the five-month period ending in March 2001. Despite the growth in payroll jobs in New York City, the unemployment rate rose from 4.3 to 5.0 percent over the year. (See chart B. Note: All data in this release are not seasonally adjusted; accordingly, over-the-year analysis is used throughout.)

¹ In this release, the metropolitan area data on employment and unemployment pertain to the New York-Northern New Jersey-Long Island, NY-NJ-PA Metropolitan Statistical Area (MSA), which consists of New York City, Nassau, Putnam, Rockland, Suffolk, and Westchester Counties in New York; Bergen, Essex, Hudson, Hunterdon, Middlesex, Monmouth, Morris, Ocean, Passaic, Somerset, Sussex, and Union Counties in New Jersey; and Pike County, Pennsylvania. This area, reflecting the definitions published by the Office of Management and Budget on December 18, 2006, is referred to as the New York area throughout this release.



Round-the-clock recorded messages for the **Consumer Price Index** and a variety of other **Bureau of Labor Statistics** data are available by dialing the **New York Information Office's** main telephone number: **(646) 264-3600**. For recorded messages, press '2'.



Employment in the New York area and its metropolitan divisions

New York area

Nine of the New York area's 10 industry supersectors gained employment from November 2006 to November 2007, with 4 adding 10,000 or more jobs. Educational and health services added the most jobs from November a year ago, 24,700. In fact, this supersector has added about 20,000 jobs or more over the year for 28 consecutive months. Still, the November 2007 increase was below the previous November's gain. (See table 1.) Employment in professional and business services rose by 23,600 through November 2007; in 18 of the past 22 months, this supersector has enjoyed growth of 20,000 or more jobs over the year. Government and leisure and hospitality grew by 12,500 and 11,200, respectively, in November 2007. Three other supersectors added 5,000 or more jobs in November 2007—financial activities (7,000); other services (6,600); and natural resources, mining, and construction (5,500). However, over-the-year job gains in two of these industries, financial activities and natural resources, mining, and construction, have slowed considerably since November 2006.

Even though the greater New York area added 80,000 jobs over the year in November 2007, this was 17,900 fewer than in November 2006. The slowdowns in financial activities; natural resources, mining, and construction; and education and health accounted for much of the decrease in the size of the area's 12-month job gain from November 2006 to November 2007. Another supersector contributing to the slowdown was manufacturing, which lost 15,600 jobs over the year; this loss was larger than the 12,900 jobs shed through November 2006.

Leisure and hospitality, other services, and professional and business services tied for the strongest percentage growth in employment over the year at 1.8 percent; education and health services followed closely behind with job growth of 1.7 percent. In November 2006, natural resources, mining, and construction had had largest percentage increase, 3.1 percent, but 12 months later, the pace of job growth in this industry had slowed to 1.5 percent. Manufacturing was the only supersector to lose jobs over the year, down 3.4 percent; this rate of job loss was faster than the 2.7-percent decline that had occurred in 2006.

Nationally, natural resources and mining outpaced all other supersectors in November 2007 with an employment gain of 4.4 percent over the year; it was also the growth leader a year earlier, advancing 8.0 percent. The next highest rates of job growth belonged to education and health services (3.1 percent), leisure and hospitality (2.9 percent), and professional and business services (1.8 percent). These same four supersectors were also the top four growth leaders in November 2006, though three of the four (education and health services being the exception) saw a drop in their rate of increase in November 2007. The steepest rate of job loss nationally occurred in construction, down 1.8 percent; one year earlier, this supersector had recorded a 1.5-percent increase in employment.

Metropolitan divisions

The New York area contains four metropolitan divisions, essentially separately identifiable employment centers within a metropolitan area. All four divisions added jobs from November 2006 to November 2007. Not unexpectedly, the largest total gain (61,400) occurred in the largest metropolitan division — New York-New York-White Plains-Wayne. Five out of every six new jobs in the division were added in New York City. (See table A.) The Edison Metropolitan Division recorded an employment increase of 10,200. Nassau-Suffolk and Newark added 5,100 and 3,300 jobs, respectively. Except for Edison, each division had a smaller increase in November 2007 than in November 2006, indicating that the slowdown was widespread.

Table A. Major indicators of labor market activity, New York-Northern New Jersey-Long Island area and geographic components, not seasonally adjusted

	2005 Nov.	2006 Nov.	2007 Nov. p	Numeric change from	
				Nov. 2005 to Nov. 2006	Nov. 2006 to Nov. 2007 p
ESTABLISHMENT DATA					
	Nonfarm employment (in thousands)				
New York-Northern New Jersey-Long Island	8,471.3	8,569.2	8,649.2	97.9	80.0
Edison	1,023.6	1,032.9	1,043.1	9.3	10.2
Nassau-Suffolk	1,258.9	1,272.1	1,277.2	13.2	5.1
New York-White Plains-Wayne	5,154.3	5,219.7	5,281.1	65.4	61.4
Bergen-Hudson-Passaic	915.7	915.3	916.8	-0.4	1.5
New York City	3,665.0	3,726.7	3,781.2	61.7	54.5
Putnam-Rockland-Westchester	573.6	577.7	583.1	4.1	5.4
Newark-Union	1,034.5	1,044.5	1,047.8	10.0	3.3
HOUSEHOLD DATA					
	Unemployment rates				
New York-Northern New Jersey-Long Island	4.9	3.9	4.1	-1.0	0.4
Edison	4.2	3.7	3.6	-0.5	-0.1
Nassau-Suffolk	4.0	3.3	3.7	-0.7	0.4
New York-White Plains-Wayne	5.4	4.1	4.6	-1.3	0.5
New York City	5.8	4.3	5.0	-1.5	0.7
Newark-Union	4.5	4.0	3.9	-0.5	-0.1

p = preliminary.

NOTE: The Edison Metropolitan Division consists of Middlesex, Monmouth, Ocean, and Somerset Counties in New Jersey. The Nassau-Suffolk Metropolitan Division consists of Nassau and Suffolk Counties in New York. The New York-White Plains-Wayne Metropolitan Division consists of New York City and Westchester, Rockland, and Putnam Counties in New York; and Bergen, Hudson, and Passaic Counties in New Jersey. The Newark-Union Metropolitan Division consists of Essex, Hunterdon, Morris, Sussex, and Union Counties in New Jersey; and Pike County in Pennsylvania.

The New York-White Plains-Wayne Metropolitan Division, with a 1.2-percent over-the-year increase in employment, was little different from the nation, which grew by 1.1 percent. Within the New York division, however, employment growth was diverse with New York City adding jobs at a 1.5-percent pace, followed by Putnam-Rockland-Westchester at 0.9 percent and Bergen-Hudson-Passaic at 0.2 percent. Job growth in the Edison Metropolitan Division, at 1.0 percent, was also close to the national average. In the remaining two divisions of Nassau-Suffolk and Newark-Union, employment grew by 0.4 and 0.3 percent, respectively. (See table 1 and chart A.)

The New York-White Plains-Wayne Metropolitan Division

In the New York-White Plains-Wayne Metropolitan Division, employment growth was strongest in natural resources, mining, and construction, up 3.3 percent over the year. Most of the job growth in this supersector occurred in New York City, where employment in natural resources, mining, and construction increased by 5.0 percent over the year. Surprisingly, the pace of job growth in this New York City supersector was virtually the same as the 4.9 percent recorded in November 2006, in contrast to the national slowdown in these industries.

Elsewhere in the division, employment in professional and business services and leisure and hospitality increased by 2.1 and 2.0 percent, respectively. In the City, the corresponding growth rates were 2.7 and 1.8 percent, respectively. The pace of job growth in professional and business services in the City was virtually the same as in November 2006, while in leisure and hospitality employment grew at a faster rate, 2.4 percent. Within the City's leisure and hospitality industry, the slowing down of job growth was particularly evident in food services and drinking places. In November 2006, employment had expanded by 3.2 percent from the previous year; by November 2007, the 12-month increase was only 1.3 percent.

The job count in the division's manufacturing supersector in November 2007 dropped 4.4 percent over the year, close to the 4.6-percent decline in November 2006. Many of the 2007 job losses occurred in New York City and in Bergen-Hudson-Passaic, where employment in manufacturing shrank by 5.1 and 4.4 percent, respectively, over the year.

The Edison Metropolitan Division

In the Edison Metropolitan Division, other services had the fastest rate of job growth in November 2007 at 8.0 percent. Government employment expanded by 2.3 percent over the year, reaching the highest level recorded in November since the series began in 1990. Employment in education and health services advanced 2.2 percent from November a year ago. All three of these supersectors had stronger over-the-year employment growth in November 2007 than in November 2006. On the other hand, trade, transportation, and utilities and manufacturing shed 0.9 and 1.8 percent, respectively, of their employment in November 2007. One year earlier, trade, transportation, and utilities had had no growth over the year, and manufacturing was still losing jobs, but at a slower rate.

The Nassau-Suffolk Metropolitan Division

In the Nassau-Suffolk Metropolitan Division, employment growth was led by education and health services, which grew 1.8 percent from November 2006 to November 2007; a year earlier, the over-the-year increase had been 2.8 percent. Professional and business services and leisure and hospitality shared the next highest increase, 1.7 percent in November 2007. However, job gains were tempered by job losses in two supersectors that declined at a faster pace in November 2007 than in the previous 12-month period. Financial activities suffered an employment decline of 3.4 percent in November 2007 compared to 1.2 percent a year earlier and manufacturing employment declined by 2.2 percent over the year versus 0.5 percent in November 2006.

The Newark-Union Metropolitan Division

In the Newark-Union Metropolitan Division, the three supersectors with the strongest over-the-year job growth in November 2007 also had stronger job gains than in the previous 12-month period. Leisure and hospitality posted the highest rate of job increase (2.5 percent), followed by education and health services (2.0 percent) and professional and business services (1.3 percent). In contrast, manufacturing employment dropped 3.3 percent and natural resources, mining, and construction was down 2.4 percent over the year. November a year ago, natural resources, mining, and construction had expanded by 3.2 percent.

Unemployment in the New York area and its metropolitan divisions

As noted, the New York area unemployment rate was 4.3 percent in November 2007, up from 3.9 percent one year earlier. This compared to the U.S. average of 4.5 percent for November 2007 and 4.3 percent in November 2006.

Three of the four metropolitan divisions had unemployment rates below the national average of 4.5 percent in November 2007: Edison (3.6 percent), Nassau-Suffolk (3.7 percent), and Newark-Union (3.9 percent). (See chart B.) In both Edison and Newark-Union, the unemployment rate was the lowest recorded for November since 2000, prior to the last recession.

In the New York-White Plains-Wayne Metropolitan Division, which accounted for approximately 60 percent of the area's labor force, the unemployment rate stood at 4.6 percent in November 2007, little different from the national average. Jobless rates in this division ranged from 5.0 percent in New York City to 3.3 percent in Putnam County. (See table 2.)

Unemployment rates increased in the New York-White Plains-Wayne Metropolitan Division and New York City by 0.5 and 0.7 percentage points, respectively, from November 2006 to November 2007. In the other three metropolitan divisions, the rates were little changed.

Technical Note

This release presents nonfarm payroll employment estimates from the Current Employment Statistics (CES) program (tables A and 1) and unemployment and labor force data from the Local Area Unemployment Statistics (LAUS) program (tables A and 2), for the New York-Northern New Jersey-Long Island metropolitan area. The CES and LAUS programs are both Federal-State cooperative endeavors.

Employment from the CES program

Definitions. Employment data refer to persons on establishment payrolls who receive pay for any part of the pay period that includes the 12th of the month. Persons are counted at their place of work rather than at their place of residence; those appearing on more than one payroll are counted on each payroll. Industries are classified on the basis of their principal activity in accordance with the 2002 version of the North American Industry Classification System.

Method of estimation. The employment data are estimated using a "link relative" technique in which a ratio (link relative) of current-month employment to that of the previous month is computed from a sample of establishments reporting for both months. The estimates of employment for the current month are obtained by multiplying the estimates for the previous month by these ratios. Small-domain models are used as the official estimators for the approximately 10 percent of CES published series which have sample based estimates.

Annual revisions. Employment estimates are adjusted annually to a complete count of jobs, called benchmarks, derived principally from tax reports that are submitted by employers who are covered under state unemployment insurance (UI) laws. The benchmark information is used to adjust the monthly estimates between the new benchmark and the preceding one and also to establish the level of employment for the new benchmark month. Thus, the benchmarking process establishes the level of employment, and the sample is used to measure the month-to-month changes in the level for the subsequent months.

Labor force and unemployment from the LAUS program

Definitions. The labor force and unemployment data are based on the same concepts and definitions as those used for the official national estimates obtained from the Current Population Survey (CPS), a sample survey of households that is conducted for the Bureau of Labor Statistics (BLS) by the U.S. Census Bureau. The labor force includes both the employed and the unemployed. Employed persons are those who did any work at all for pay or profit in the survey reference week (the week including the 12th of the month) or worked 15 hours or more without pay in a family business or farm, plus those not working who had a job from which they were temporarily absent, whether or not paid, for such reasons as labor-management dispute, illness, or vacation. Unemployed persons are those who did not work at all (in the reference week), had actively looked for a job (sometime in the 4-week period ending with the survey reference week), and were currently available for work; persons on layoff expecting recall need not be looking for work to be counted as unemployed.

Method of estimation. Effective January 2005, estimates for all census divisions, states, the District of Columbia, the Los Angeles-Long Beach-Glendale metropolitan division, and New York City were produced using updated time-series models with real time benchmarking. Model-based estimation was extended to include additional areas and the respective balances-of-state. For all other substate areas, estimates are prepared through indirect estimation procedures. Employment estimates, which are based largely on "place of work" estimates from the CES program, are adjusted to refer to place of residence as used in the CPS. Unemployment estimates are aggregates of persons previously employed in industries covered by state unemployment (UI) laws and entrants to the labor force data from the CPS. The substate estimates of employment and unemployment which geographically exhaust the entire state are adjusted proportionally to ensure that they add to the independently estimated state or balance-of-state totals. A detailed description of the estimation procedures is available from BLS upon request.

Annual revisions. Labor force and unemployment data shown for the prior year reflect adjustments made at the end of each year, usually implemented with January estimates. The adjusted estimates reflect updated population data from the U.S. Census Bureau, any revisions in the other data sources, and model reestimation at the state and selected area level. All substate area estimates are adjusted to add to the revised model-based estimates.

Reliability of the estimates

The estimates presented in this release are based on sample survey and administrative data and thus are subject to sampling and other types of errors. Sampling error is a measure of sampling variability--that is, variation that occurs by chance because a sample rather than the entire population is surveyed. Survey data are also subject to nonsampling errors, such as those which can be introduced into the data collection and processing operations. Estimates not directly derived from sample surveys are subject to additional errors resulting from the special estimation processes used. Sums of individual items may not always equal totals shown in

the same tables because of rounding. With respect to the LAUS program, unemployment rates are computed, in most instances, from unrounded data rather than from data that may be displayed in the tables; differences, however, are generally insignificant.

Labor force and unemployment estimates. Model-based error measures, including for over-the-month change, are available for states on the BLS Web site at <http://www.bls.gov/lau/lastderr.htm>. Measures of nonsampling error are not available, but additional information on the subject is provided in the web-only publication, *Employment & Earnings Online*.

Employment estimates. Measures of sampling error are available for state CES data at the NAICS supersector level and for metropolitan area CES data at the total nonfarm level. Information on recent benchmark revisions for states is available on the BLS Web site at <http://www.bls.gov/sae/>.

Area definitions. Metropolitan Statistical Area definitions for the data published in this release reflect the coverage established by the U.S. Office of Management and Budget (OMB), effective December 18, 2006. A detailed list of the geographic definitions is published annually in the May issue *Employment & Earnings Online*.

Additional information

More complete information on the technical procedures used to develop these estimates and additional data appear in *Employment & Earnings Online*.

Estimates of unadjusted and seasonally adjusted labor force and unemployment data for states, census regions and divisions, and eight areas are available in the news release, Regional and State Employment and Unemployment. Estimates of labor force and unemployment for all states, metropolitan areas, labor market areas, counties, cities with a population of 25,000 or more, and other areas used in the administration of various federal economic assistance programs are available from the BLS Internet at <http://www.bls.gov/lau/>. Employment data from the CES program are available at <http://www.bls.gov/sae/>.

Information in this release will be made available to sensory impaired individuals upon request. Voice phone: 202-691-5200; TDD message referral phone: 1-800-877-8339.

Table 1. Employees on nonfarm payrolls by industry, New York-Northern New Jersey-Long Island and United States, not seasonally adjusted
(Numbers in thousands)

Area and industry	2006 Nov.	2007 Nov. p	Change from			
			Nov. 2005 to Nov. 2006 p		Nov. 2006 to Nov. 2007 p	
			Number	Percent	Number	Percent
United States						
Total nonfarm	138,052.0	139,568.0	2,235.0	1.6	1,516.0	1.1
Natural resources and mining	703.0	734.0	52.0	8.0	31.0	4.4
Construction	7,768.0	7,631.0	118.0	1.5	-137.0	-1.8
Manufacturing	14,152.0	13,956.0	-66.0	-0.5	-196.0	-1.4
Trade, transportation, and utilities	26,773.0	27,028.0	222.0	0.8	255.0	1.0
Information	3,065.0	3,089.0	4.0	0.1	24.0	0.8
Financial activities	8,416.0	8,410.0	185.0	2.2	-6.0	-0.1
Professional and business services	17,838.0	18,167.0	491.0	2.8	329.0	1.8
Education and health services	18,255.0	18,820.0	482.0	2.7	565.0	3.1
Leisure and hospitality	13,066.0	13,449.0	437.0	3.5	383.0	2.9
Other services	5,423.0	5,458.0	51.0	0.9	35.0	0.6
Government	22,593.0	22,826.0	259.0	1.2	233.0	1.0
New York-Northern New Jersey-Long Island Metropolitan Statistical Area						
Total nonfarm	8,569.2	8,649.2	97.9	1.2	80.0	0.9
Natural resources, mining, and construction	359.0	364.5	10.9	3.1	5.5	1.5
Manufacturing	464.4	448.8	-12.9	-2.7	-15.6	-3.4
Trade, transportation, and utilities	1,629.7	1,632.8	7.6	0.5	3.1	0.2
Information	294.4	295.8	2.3	0.8	1.4	0.5
Financial activities	797.9	804.9	12.7	1.6	7.0	0.9
Professional and business services	1,285.6	1,309.2	23.2	1.8	23.6	1.8
Education and health services	1,438.9	1,463.6	28.0	2.0	24.7	1.7
Leisure and hospitality	626.7	637.9	12.2	2.0	11.2	1.8
Other services	370.3	376.9	6.8	1.9	6.6	1.8
Government	1,302.3	1,314.8	7.1	0.5	12.5	1.0
Edison Metropolitan Division						
Total nonfarm	1,032.9	1,043.1	9.3	0.9	10.2	1.0
Natural resources, mining, and construction	49.4	49.1	0.6	1.2	-0.3	-0.6
Manufacturing	76.2	74.8	-0.6	-0.8	-1.4	-1.8
Trade, transportation, and utilities	229.7	227.7	0.0	0.0	-2.0	-0.9
Information	31.0	31.1	0.8	2.6	0.1	0.3
Financial activities	64.2	65.0	0.0	0.0	0.8	1.2
Professional and business services	171.1	173.5	4.0	2.4	2.4	1.4
Education and health services	134.5	137.5	0.6	0.4	3.0	2.2
Leisure and hospitality	76.0	76.2	2.5	3.4	0.2	0.3
Other services	48.5	52.4	1.0	2.1	3.9	8.0
Government	152.3	155.8	0.4	0.3	3.5	2.3
Nassau-Suffolk Metropolitan Division						
Total nonfarm	1,272.1	1,277.2	13.2	1.0	5.1	0.4
Natural resources, mining, and construction	71.5	72.1	2.1	3.0	0.6	0.8
Manufacturing	86.3	84.4	-0.4	-0.5	-1.9	-2.2
Trade, transportation, and utilities	278.3	278.9	0.6	0.2	0.6	0.2
Information	30.0	30.2	0.5	1.7	0.2	0.7
Financial activities	80.1	77.4	-1.0	-1.2	-2.7	-3.4
Professional and business services	166.9	169.7	4.0	2.5	2.8	1.7
Education and health services	208.0	211.8	5.6	2.8	3.8	1.8
Leisure and hospitality	94.6	96.2	0.7	0.7	1.6	1.7
Other services	52.7	52.8	0.4	0.8	0.1	0.2
Government	203.7	203.7	0.7	0.3	0.0	0.0
New York-White Plains-Wayne Metropolitan Division						
Total nonfarm	5,219.7	5,281.1	65.4	1.3	61.4	1.2
Natural resources, mining, and construction	192.5	198.8	6.8	3.7	6.3	3.3
Manufacturing	211.9	202.6	-10.3	-4.6	-9.3	-4.4
Trade, transportation, and utilities	903.1	907.3	5.6	0.6	4.2	0.5
Information	208.3	209.5	-0.6	-0.3	1.2	0.6
Financial activities	575.9	585.2	14.2	2.5	9.3	1.6

Table 1. Employees on nonfarm payrolls by industry, New York-Northern New Jersey-Long Island and United States, not seasonally adjusted-continued
(Numbers in thousands)

Area and industry	2006 Nov.	2007 Nov. p	Change from			
			Nov. 2005 to Nov. 2006 p		Nov. 2006 to Nov. 2007 p	
			Number	Percent	Number	Percent
New York-Wayne-White Plains Metropolitan Division-continued						
Professional and business services	784.5	800.7	13.6	1.8	16.2	2.1
Education and health services	953.8	968.9	19.7	2.1	15.1	1.6
Leisure and hospitality	391.9	399.7	9.6	2.5	7.8	2.0
Other services	220.0	223.1	2.9	1.3	3.1	1.4
Government	777.8	785.3	3.9	0.5	7.5	1.0
Bergen-Hudson-Passaic						
Total nonfarm	915.3	916.8	-0.4	-0.0	1.5	0.2
Natural resources, mining, and construction	32.9	32.1	-0.4	-1.2	-0.8	-2.4
Manufacturing	74.8	71.5	-3.1	-4.0	-3.3	-4.4
Trade, transportation, and utilities	220.4	218.3	0.4	0.2	-2.1	-1.0
Information	25.0	24.9	0.0	0.0	-0.1	-0.4
Financial activities	74.4	74.5	0.1	0.1	0.1	0.1
Professional and business services	132.4	130.8	-1.6	-1.2	-1.6	-1.2
Education and health services	130.0	132.3	1.3	1.0	2.3	1.8
Leisure and hospitality	62.6	64.7	2.3	3.8	2.1	3.4
Other services	38.9	41.4	0.1	0.3	2.5	6.4
Government	123.9	126.3	0.5	0.4	2.4	1.9
New York City						
Total nonfarm	3,726.7	3,781.2	61.7	1.7	54.5	1.5
Natural resources, mining, and construction	122.8	129.0	5.7	4.9	6.2	5.0
Manufacturing	105.5	100.1	-6.6	-5.9	-5.4	-5.1
Trade, transportation, and utilities	570.2	575.7	5.8	1.0	5.5	1.0
Information	166.5	168.1	0.0	0.0	1.6	1.0
Financial activities	463.9	474.2	14.7	3.3	10.3	2.2
Professional and business services	580.1	595.9	14.5	2.6	15.8	2.7
Education and health services	713.9	724.3	16.4	2.4	10.4	1.5
Leisure and hospitality	290.0	295.2	6.9	2.4	5.2	1.8
Other services	156.8	157.4	2.4	1.6	0.6	0.4
Government	557.0	561.3	1.9	0.3	4.3	0.8
Putnam-Rockland-Westchester						
Total nonfarm	577.7	583.1	4.1	0.7	5.4	0.9
Natural resources, mining, and construction	36.8	37.7	1.5	4.2	0.9	2.4
Manufacturing	31.6	31.0	-0.6	-1.9	-0.6	-1.9
Trade, transportation, and utilities	112.5	113.3	-0.6	-0.5	0.8	0.7
Information	16.8	16.5	-0.6	-3.4	-0.3	-1.8
Financial activities	37.6	36.5	-0.6	-1.6	-1.1	-2.9
Professional and business services	72.0	74.0	0.7	1.0	2.0	2.8
Education and health services	109.9	112.3	2.0	1.9	2.4	2.2
Leisure and hospitality	39.3	39.8	0.4	1.0	0.5	1.3
Other services	24.3	24.3	0.4	1.7	0.0	0.0
Government	96.9	97.7	1.5	1.6	0.8	0.8
Newark-Union Metropolitan Division						
Total nonfarm	1,044.5	1,047.8	10.0	1.0	3.3	0.3
Natural resources, mining, and construction	45.6	44.5	1.4	3.2	-1.1	-2.4
Manufacturing	90.0	87.0	-1.6	-1.7	-3.0	-3.3
Trade, transportation, and utilities	218.6	218.9	1.4	0.6	0.3	0.1
Information	25.1	25.0	1.6	6.8	-0.1	-0.4
Financial activities	77.7	77.3	-0.5	-0.6	-0.4	-0.5
Professional and business services	163.1	165.3	1.6	1.0	2.2	1.3
Education and health services	142.6	145.4	2.1	1.5	2.8	2.0
Leisure and hospitality	64.2	65.8	-0.6	-0.9	1.6	2.5
Other services	49.1	48.6	2.5	5.4	-0.5	-1.0
Government	168.5	170.0	2.1	1.3	1.5	0.9

p =preliminary.

NOTE: Data are counts of jobs by place of work. Estimates are currently projected from March 2006 benchmark levels. Estimates subsequent to the current benchmark month are provisional and will be revised when new information becomes available.

Table 2. Employment status of the civilian noninstitutional population, New York-Northern New Jersey-Long Island and United States, not seasonally adjusted
(Numbers in thousands)

Area and employment status	2005 Nov.	2006 Nov.	2007 Nov. p	Numeric change from Nov.	
				2005 to 2006	2006 to 2007 p
United States					
Civilian labor force	150,239.0	152,590.0	154,035.0	2,351.0	1,445.0
Unemployment	7,271.0	6,576.0	6,917.0	-695.0	341.0
Unemployment rate	4.8	4.3	4.5	-0.5	0.2
New York-Northern New Jersey-Long Island Metropolitan Statistical Area					
Civilian labor force	9,260.6	9,297.3	9,332.9	36.7	35.6
Unemployment	452.7	364.9	397.7	-87.8	32.8
Unemployment rate	4.9	3.9	4.3	-1.0	0.4
Edison Metropolitan Division					
Civilian labor force	1,188.5	1,197.6	1,197.2	9.2	-0.4
Unemployment	50.0	44.3	43.1	-5.8	-1.1
Unemployment rate	4.2	3.7	3.6	-0.5	-0.1
Nassau-Suffolk Metropolitan Division					
Civilian labor force	1,473.3	1,482.0	1,476.9	8.7	-5.1
Unemployment	58.5	49.5	54.0	-9.0	4.5
Unemployment rate	4.0	3.3	3.7	-0.7	0.4
New York-White Plains-Wayne Metropolitan Division					
Civilian labor force	5,503.8	5,513.8	5,560.9	10.0	47.1
Unemployment	295.0	226.7	257.7	-68.3	31.0
Unemployment rate	5.4	4.1	4.6	-1.3	0.5
Bergen-Hudson-Passaic					
Civilian labor force	1,013.0	1,015.3	1,010.5	2.4	-4.8
Unemployment	46.1	40.9	40.6	-5.1	-0.3
Unemployment rate	4.5	4.0	4.0	-0.5	0.0
New York City					
Civilian labor force	3,799.1	3,803.7	3,856.3	4.5	52.7
Unemployment	221.7	163.1	192.5	-58.6	29.4
Unemployment rate	5.8	4.3	5.0	-1.5	0.7
Putnam County					
Civilian labor force	56.3	56.5	56.4	0.2	0.0
Unemployment	2.1	1.7	1.8	-0.4	0.2
Unemployment rate	3.8	3.0	3.3	-0.8	0.3
Rockland County					
Civilian labor force	151.6	152.5	152.2	0.9	-0.3
Unemployment	5.9	5.1	5.4	-0.8	0.3
Unemployment rate	3.9	3.4	3.6	-0.5	0.2
Westchester County					
Civilian labor force	483.8	485.9	485.5	2.1	-0.4
Unemployment	19.1	15.8	17.3	-3.3	1.5
Unemployment rate	4.0	3.3	3.6	-0.7	0.3
Newark-Union Metropolitan Division					
Civilian labor force	1,095.1	1,103.9	1,097.8	8.8	-6.1
Unemployment	49.2	44.5	43.0	-4.7	-1.5
Unemployment rate	4.5	4.0	3.9	-0.5	-0.1

p =preliminary.

NOTE: Data refer to place of residence. Area definitions are based on Office of Management and Budget Bulletin No. 07-01, dated December 18, 2006, and are available at <http://www.bls.gov/lau/lausmsa.htm> and in the May issue of *Employment and Earnings*. Data for 2006 have been revised to incorporate updated inputs and adjustments to new state controls.

Chart 1. Over-the-year change in employment, metropolitan divisions in New York-Northern New Jersey-Long Island, November 2007

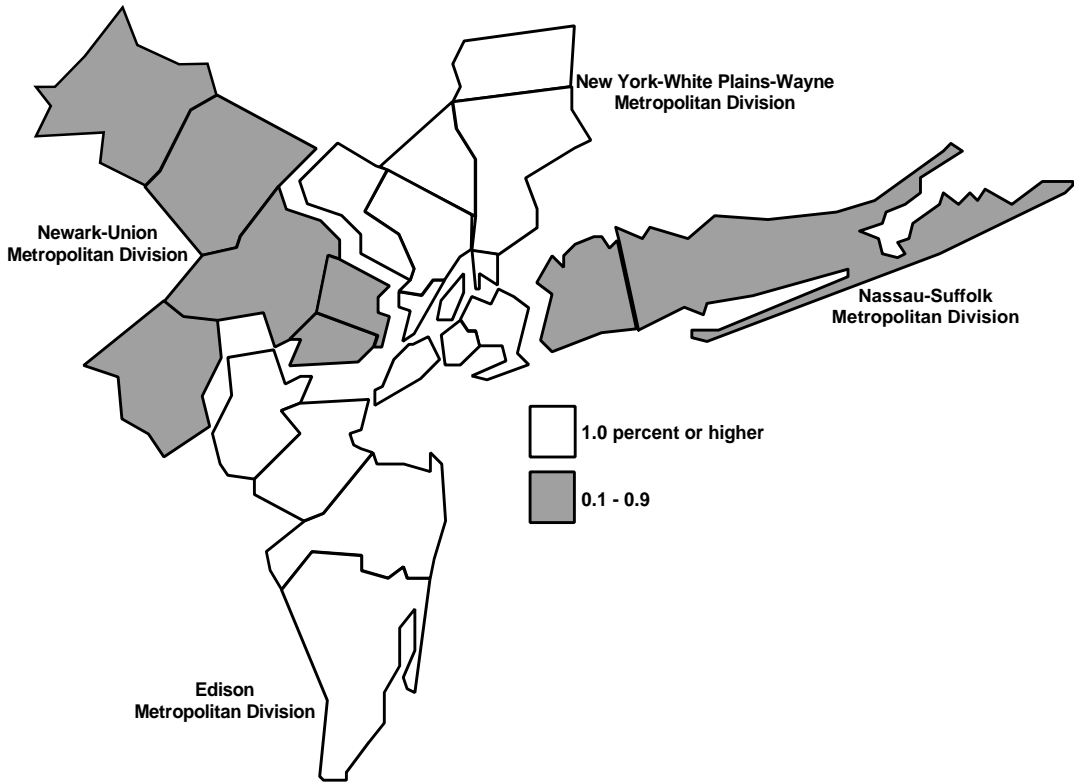
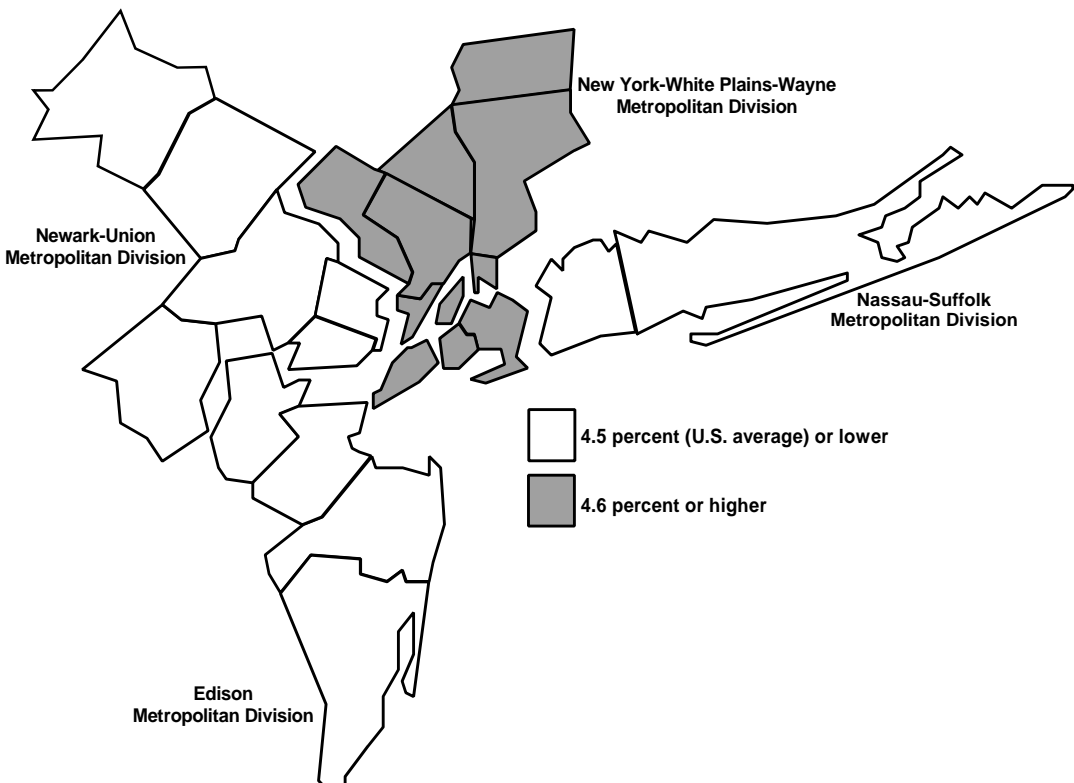


Chart 2. Unemployment rates, metropolitan divisions in New York-Northern New Jersey-Long Island, November 2007



Source: Bureau of Labor Statistics, January 2008